



## Structural abnormalities associated with poor outcome of a major depressive episode: the role of thalamus.

Jean-Marie Batail, Julie Coloigner, Marine Soulas, Gabriel Robert, Christian Barillot, Dominique Drapier

### ► To cite this version:

Jean-Marie Batail, Julie Coloigner, Marine Soulas, Gabriel Robert, Christian Barillot, et al.. Structural abnormalities associated with poor outcome of a major depressive episode: the role of thalamus.. Psychiatry Research: Neuroimaging, 2020, 305, pp.1-10. 10.1016/j.psychresns.2020.111158 . hal-02920551

**HAL Id: hal-02920551**

**<https://hal.science/hal-02920551>**

Submitted on 18 Nov 2021

**HAL** is a multi-disciplinary open access archive for the deposit and dissemination of scientific research documents, whether they are published or not. The documents may come from teaching and research institutions in France or abroad, or from public or private research centers.

L'archive ouverte pluridisciplinaire **HAL**, est destinée au dépôt et à la diffusion de documents scientifiques de niveau recherche, publiés ou non, émanant des établissements d'enseignement et de recherche français ou étrangers, des laboratoires publics ou privés.

Structural abnormalities associated with poor outcome of a major depressive episode: the role of thalamus.

Running title: Thalamus in depressive episode outcome

JM. Batail<sup>\*a,b,c, @</sup>, J. Coloigner<sup>\*b</sup>, M. Soulas<sup>a</sup>, G. Robert<sup>a,b,c</sup>, C. Barillot<sup>b#</sup>, D. Drapier<sup>a,b,c#</sup>

- a. Centre Hospitalier Guillaume R gnier, Academic Psychiatry Department, F-35703 Rennes, France
- b. Univ Rennes, INRIA, CNRS, IRISA, INSERM, Empenn U1228 ERL, F-35042 Rennes, France
- c. Univ Rennes, "Comportement et noyaux gris centraux" research unit (EA 4712), F-35000 Rennes, France

\* These authors contributed equally to this work.

# These authors contributed equally to this work.

@ **Corresponding author :**

Jean-Marie Batail

Centre Hospitalier Guillaume R gnier

108 avenue du G n ral Leclerc

35703 Rennes, France

tel: +33-2-99-33-39-37

fax: +33-2-99-33-39-72

[jeanmariebatail@gmail.com](mailto:jeanmariebatail@gmail.com)

## Abstract

An identification of precise biomarkers contributing to poor outcome of a major depressive episode (MDE) has the potential to improve therapeutic strategies by reducing time to symptomatic relief. In a cross-sectional volumetric study with a 6 month clinical follow-up, we performed baseline brain grey matter volume analysis between 2 groups based on illness improvement: 27 MDD patients in the “responder” (R) group (Clinical Global Impression-Improvement (CGI-I) score  $\leq 2$ ) and 30 in the “non-responder” (NR) group (CGI-I  $> 2$ ), using a Voxel Based-Morphometry analysis. NR had significantly smaller Grey Matter (GM) volume in the bilateral thalami, in precentral gyrus, middle temporal gyrus, precuneus and middle cingulum compared to R at baseline. Additionally, they exhibited significant greater GM volume increase in the left anterior lobe of cerebellum and posterior cingulate cortex. The latter result was not significant when participants with bipolar disorder were excluded from the analysis. NR group had higher baseline anxiety scores. Our study has pointed out the role of thalamus in prognosis of MDE. These findings highlight the involvement of emotion regulation in the outcome of MDE. The present study provides a step towards the understanding of neurobiological processes of treatment resistant depression.

Keywords: Mood disorders, Major Depressive Episode, Treatment-Resistance, Neuroimaging, Grey Matter, Thalamus.

## 1. Introduction

Mood Depressive Disorder (MDD) is a very common mental disorder with a lifetime prevalence of 16% (Kessler et al., 2003) and is the leading cause of disability worldwide (Vasic et al., 2008). Only 50% of patients respond to their first treatment and remission rate with standard antidepressant treatments is only 30-40% (Murray et al., 2012; Rush et al., 2006). Reliable predictors of poor outcome in patient with a Major Depressive Episode (MDE) are lacking (Nathan and Gorman, 2007). A biomarker has been defined as *“a characteristic that is objectively measured and evaluated as an indicator of normal biological processes, pathogenic processes, or pharmacologic responses to a therapeutic intervention”* (“Biomarkers and surrogate endpoints,” 2001). Over the past decade, there is a growing of interest in the development of precision medicine which could help guiding therapeutic strategies using biomarkers-based approaches (Fonseka et al., 2018; Williams, 2017, 2016). This field has been fed by research on biomarkers combining biological and clinical information (Kozak and Cuthbert, 2016; Micoulaud-Franchi et al., 2018).

Since the past decades, the use of neuroimaging techniques has enabled significant advances toward understanding the pathophysiology of mood disorders and identifying potential biomarkers (Fonseka et al., 2018). Structural MRI (sMRI) methods – especially voxel-based morphometry (VBM) – allow non-invasive and accessible investigations of the distribution of grey matter (GM) with automated, repeatable and accurate results (Whitwell, 2009). They provided cumulative evidence of GM abnormalities in emotion and mood regulation key regions in patients with MDD compared to healthy controls (HC) (Lin et al., 2017; Serra-Blasco et al., 2013). Some authors have shown associations between treatment response in depression (TRD) with gray matter (GM) volume. The GM volume changes have been reported including regions involved in cognitive functioning such as deficit in left (Furtado et al., 2012), right (Fu et al., 2013), or both (J. L. Phillips et al., 2015) hippocampus volume (Sämann et al., 2013) and dorsolateral prefrontal cortex (DLPFC) (Fu et al., 2013; Li et al., 2010). Other key regions involved in emotional processing has been found in TRD such as anterior cingulate gyrus (Fujino et al., 2015; Machino et al., 2014), amygdala (Sandu et al., 2017), temporal gyrus (Liu et al., 2012; Ma et al., 2012; Machino et al., 2014; Sämann et al., 2013), insula (Johnston et al., 2015), and cerebellum (Liu et al., 2012; Machino et al., 2014). All these studies used different designs, such as prospective (Abbott et al., 2014; Fujino et al., 2015; Furtado et al., 2012; Korgaonkar et al., 2015; Li et al., 2010; Phillips et al., 2015; Sämann et al., 2013; Schmaal et al., 2015) and retrospective studies (Johnston et al., 2015; Liu et al., 2012; Machino et al., 2014; Sandu et al., 2017), duration of the follow up was also variable from 5 weeks (Sämann et al., 2013) to 5 years (Serra-Blasco et al., 2016), assessing different therapeutic

modalities such as transcranial magnetic stimulation (Furtado et al., 2012), electroconvulsive therapy (ECT) (Abbott et al., 2014), antidepressant (ATD) (Korgaonkar et al., 2015; Li et al., 2010; Sämann et al., 2013), or cognitive behavioral therapy (Fujino et al., 2015), whereas in other patients received personalized therapeutic strategies (Phillips et al., 2015), which could limit the generalizability of the current literature. Thus, these studies did not use consistent definitions of treatment resistance such as resistance to at least two different ATD trial or criteria from Massachusetts General Hospital staging or according to depression rating scales decrease. Therefore, there is a need to transfer scientific knowledge on biomarkers in treatment resistant depression over routine care clinics applied to a Major depressive Episode (MDE).

In this paper, we performed a cross-sectional volumetric study with a 6-month clinical follow-up to examine the relationship between voxel-wise GM volume and a poor outcome of depression. The sample of patients were treated with personalized care according to therapeutic guidelines and were followed over 6 months, the usual timescale of one MDE (Solomon, 1997; ten Have et al., 2017). In this study, we compared whole brain volume differences at baseline between 2 groups of depressed patients – responders (R) / non-responders (NR) – based on illness improvement at 6-month follow-up. Regarding to the current literature on treatment resistance in Mood Depressive Disorder, we hypothesized that patients who do not achieve remission from, will have different grey matter volume at baseline, affecting key regions involved in emotional and cognitive processes.

## 2. Methods

### 2.1. Patient population

Patients included suffered from an MDE according to DSM-5 criteria with or without a personal history of depressive mood disorder (unipolar or bipolar subtype). Exclusion criteria included other Axis-I disorders (except for anxious comorbidities such as post-traumatic stress disorder, social phobia, generalized anxiety disorder or panic disorder), which were explored using the Mini-International Neuropsychiatric Interview (Sheehan et al., 1998). Patients with severe chronic physical illness were not included. Other exclusion criteria were potential safety contraindications for MRI (pacemakers, metal implants, pregnancy and lactation), diagnosed neurodegenerative disorders (e.g. Parkinson's disease, Alzheimer's disease, Huntington's disease), a history of significant head injury (history of head injury with loss of consciousness which required hospitalization), or diagnosed dementia (according to DSM-5 criteria).

## 2.2. Study design

Depressed patients were recruited from routine care units in the psychiatric university hospital in Rennes between November 2014 and January 2017 and were enrolled in a prospective open cohort study. A complete description of the study has been given to the subjects, and their written informed consent was obtained. The study was approved by an ethic committee (Comité de Protection des Personnes Ouest VI – ref : CCP Ouest 6 – 829) and is registered in [www.clinicaltrials.gov](http://www.clinicaltrials.gov) (NCT02286024). When recruited, patients underwent a first structured clinical interview at baseline. By a maximum of three days after clinical assessment patients had an imaging protocol. They received personalized care according to therapeutic guidelines described elsewhere (Phillips et al., 2015). Patients were followed-up in routine care by their physicians (as frequently as required by their clinical state). If they didn't meet 20% improvement at MADRS scale, dose was either increased, or medication changed. Medication changes were based on international guidelines (Bauer et al., 2017; Bennabi et al., 2019; Charpeaud et al., 2017; Kennedy et al., 2016) and NICE guidelines<sup>1</sup>. Following these recommendations, monotherapy or combination/association therapies were then chosen according to their treatment resistance level. Before being recruited, both R and NR individuals have been treated according to the same algorithms described above. Therefore, NR have benefited from adapted therapeutic strategies. Clinical data were anonymously retrieved in a notebook. At 6 months follow-up patients underwent a second structured clinical interview.

## 2.3. Clinical assessment

Patients were assessed at baseline and at 6 months by a trained clinician (psychiatrist or psychiatry resident). The 6 months' timescale was chosen because it is the median duration of a MDE (ten Have et al., 2017). Sociodemographic (age, gender) and disease characteristics (diagnosis, disease duration, number of mood depressive episodes, actual medication, antecedent of suicidal attempts, treatment resistance stage according to Thase and Rush's classification) were collected.

In addition, these following scales were assessed:

- Mini-International Neuropsychiatric Interview (M.I.N.I.) (Sheehan et al., 1998)
- Montgomery and Åsberg Depression Rating Scale (MADRS) (Montgomery and Åsberg, 1979) and Beck Depression Inventory (BDI) (Beck et al., 1961)
- Widlöcher Depressive Retardation Scale (WDRS) (Widlöcher, 1983)

---

<sup>1</sup> <https://www.nice.org.uk/guidance/indevelopment/gid-cgwave0725/documents>

- State Trait Anxiety Inventory A and B (STAI) (Spielberger, C. D. et al., 1983) and Hamilton Anxiety Scale (HAMA) (Hamilton M., 1959)
- Snaith Hamilton Pleasure Scale (SHAPS) (Snaith et al., 1995)
- Apathy Evaluation Scale (AES) (Marin et al., 1991)
- Clinical Global Impression – Severity (CGI-S) and the Clinical Global Impression - Improvement (CGI-I), (Guy, 1976).

The Clinical Global Impression – improvement subscale (CGI-I) scale was used after a 6-months period to measure the treatment response. The CGI-I measure is rated from 1 (very much improved) to 7 (very much worse). This measure is indeed a well-established research brief rating tool applicable to all psychiatric disorders and well correlated with other standard scales (Busner and Targum, 2007). It provides a global rating of illness severity and improvement, taking into accounts the patient's history, social circumstances, symptoms and the impact of the illness on the patient's ability to function (Busner and Targum, 2007). Leucht et al. also demonstrated that a CGI-I score of 2 (much improved) corresponded to a 50-60% reduction in the HAM-D-17 score, while a score of 1 reflected a decrease from 75 to 85 % of the same scale within the 6-months longitudinal follow-up of depressive patients (Leucht et al., 2013). Min et al. also used this threshold of a score  $\leq 2$  after a 6 months' follow-up to define a favorable clinical course and a therapeutic response (Min et al., 2012).

## 2.4. Imaging procedure

### 2.4.1. Data acquisition

Patients were scanned on a 3T whole body Siemens MR scanner (Magnetom Verio, Siemens Healthcare, Erlangen, Germany) with a 32-channel head coil. Anatomical data included a high-resolution 3D T1-weighted MPRAGE sequence (3D T1w) with the following imaging parameters: TR/TE/TI = 1900/2.26/900 ms, 256x256 mm<sup>2</sup> FOV and 176 sagittal slices, 1x1x1 mm<sup>3</sup> resolution, parallel imaging GRAPPA2.

### 2.4.2. Data processing

Imaging data were analyzed by optimized voxel-based morphometry (VBM), using Statistical Parametric Mapping software (SPM) (<http://www.fil.ion.ucl.ac.uk/spm/>) implemented in Matlab (MathWorks, Natick, Massachusetts). The MRI scans were segmented into GM, white matter and cerebrospinal fluid using a unified tissue-segmentation module, after correcting for image-intensity non-uniformity. An Exponentiated Lie algebra (DARTEL) template was then

computed from the GM and white matter of the R and NR patients (Ashburner, 2007). Then, a two-step registration method was used to transform segmented images into the Montreal Neurological Institute (MNI) template space. First, segmented images of each subject were then spatially non-linearly normalized to customized template; then affine transformation between this DARTEL template and Montreal National Institute (MNI) space was calculated. To preserve gray matter volume within each voxel, we modulated images by Jacobian determinants derived from the spatial normalization by DARTEL and then smoothed them by using an 8-mm FWHM Gaussian kernel.

## 2.5. Statistical analyses

Statistical analyses were performed with R software (<http://www.R-project.org/>) only on patients who had undergone both baseline and 6 months assessments. All results are reported as means  $\pm$  standard derivation (SD) for continuous variables, and rates for discrete variables. The significance threshold for all tests was set at 5%.

### 2.5.1. Statistical analysis of clinical data

The whole sample was divided into two groups using a 2-CGI-I cut-off score at the 6 months assessment, as suggested by Min et al. (Min et al., 2012) ( $\text{CGI-I} \leq 2$  : R group;  $\text{CGI-I} > 2$  : NR group). Socio-demographic and clinical variables were then compared between these 2 groups.

Shapiro Wilk test was used for each variable to determine if the data set is well-modeled by a normal distribution and the QQ plots were visually inspected to ensure normal distribution. Quantitative variables were then compared using either the Student's test or the Wilcoxon test, when needed. Owing to the different sizes of the groups, qualitative variables were compared with either the Chi-squared test or a Fisher test, when needed.

### 2.5.2. Morphometric data analysis

A whole-brain voxel-wise analysis was performed in SPM to detect baseline differences in GM between the NR and R groups with the 2- CGI-I cut-off score. Age, gender, total intracranial volume (TIV), and medication load were included as covariates in each comparison. A composite measure of medication load for each patient was assessed using a previously established method (Sackeim, 2001). The two-sample t-tests were conducted within a group GM mask obtained by selecting a threshold of 0.2 on the mean GM map of all subjects.



Thresholds were set at a corrected  $p < 0.01$ , corrected for multiple comparison using the AlphaSim program in AFNI (Analysis of Functional NeuroImages), determined by Monte Carlo simulation (Parameters were: single voxel  $p$ -value = 0.01, a minimum cluster size of 7.3 mm<sup>3</sup>, FWHM = 8 mm, within a gray matter mask corresponding to the MNI atlas). The student  $t$ -value reported in the result section corresponds to the maximum value of each cluster. To explore to what extent these results are associated with individuals with bipolar disorders, we performed the same analysis after removing patients suffering from bipolar disorder.

### 3. Results

#### 3.1 Demographics and clinical measures

Initially, 117 patients were included at baseline. Of 53 patients were lost to follow-up, 3 died during the timeframe of the study: 2 by suicide and 1 for non-psychiatric reason. Forty-three patients could not be traced, most commonly because they were not routinely followed in the academic hospital. Sixty-four patients were present at follow up. Of these, 2 did not have an imaging protocol and CGI-I score was missing for 5 of them. In total, 57 patients were analyzed. According to the 2-CGI-I cut off score, 27 were R patients and 30 NR ones. There were no significant differences between patients analyzed and those loss at follow-up regarding the baseline depression severity (MADRS total scores) (two sample  $t$ -test,  $t = 1.55$ ,  $df = 107.72$ ,  $p$ -value = 0.12, CI95 [-0.46; 3.77]).

The study's flowchart is shown on Figure 1. Socio-demographical and clinical characteristics at baseline and at 6 months of all analyzed patients are summarized in Table 1. The sample was predominantly represented by women, middle-aged and suffering from moderate depression.

Baseline demographic data and clinical characteristics from 27 R patients and 30 NR patients were compared. Results are shown in Table 2. The NR group was significantly younger in comparison with the R group. No significant difference was found between the two groups on gender, education level, age of onset, comorbidities, medication load, illness duration and number of depressive episodes. In addition, severity of depression (measured by MADRS and BDI scores) was not significantly different between the R group and NR group. NR patients were significantly more anxious at baseline according to the Hamilton Anxiety scale (HAM-A).

### 3.2. Morphometric results: group comparisons of GM volume using VBM

Group comparison was controlled for age, gender, TIV, and medication load. The detailed t-test results, including the coordinates of the clusters are presented in table 3 and in figures 2 and 3.

In comparison with R patients at baseline, NR revealed a significant reduction of GM volume in an extended network including bilateral thalami, right frontal lobe (precentral gyrus), parietal lobes (precuneus and mid cingulum), and temporal lobe (mid temporal gyrus). In addition, with NR patients showed greater GM volume cluster in left anterior cerebellum and left posterior cingulate cortex. This latter result was not significant when participants with bipolar disorder were excluded from the analysis.

## 4. Discussion

### 4.1. General considerations

In addition to prior knowledge on that topic, we found significant baseline GM volume reduction in bilateral thalamus and an increase in cerebellum at baseline in patients suffering from a MDE with a poor outcome at 6 months. Our results appeared in line with our hypothesis and previous findings from structural neuroimaging studies (Chen et al., 2007). Altogether, there is converging evidence that poor outcome of depression is associated with gray matter deviations affecting key regions involved in emotional and cognitive processes.

### 4.2. Cortical gray matter volume reductions

In the NR group, we observed reduced GM volume over the frontal (precentral gyrus), the temporal (middle temporal gyrus), and the parietal lobes (precuneus and middle cingulum) at baseline. These results were consistent with Peng et al who reported that the frontal-limbic circuit abnormality is implicated in the pathogenesis of MDD and are closely associated with clinical manifestations, including emotional bias, rumination and cognitive deficit (Peng et al., 2011). A recent meta-analysis of VBM studies in adults with MDD (Fu et al., 2013) revealed an association between a decrease in GM volume in the left DLPFC and reduced likelihood of antidepressant response (Chen et al., 2007; Costafreda et al., 2009; Li et al., 2010). Another structural MRI study using machine learning approach also reported association between reduced GM volume in right DLPFC and poor response after a 6 weeks period of treatment (Gong et al., 2011). According to Li et al., structural deficits in the left DLPFC might predict

poor or delayed antidepressant responses in adult patients with recurrent MDD (Li et al., 2010). Furthermore, the same authors have highlighted the volume variation of some small regions within parietal lobe (postcentral gyrus) correlated with depressive symptoms or visual/acoustic attention (Li et al., 2010).

#### 4.3. Thalamic volume reduction

The thalamus is a pair mass of gray matter in the dorsal part of the diencephalon which has mainly a function of relay and integration of sensory and motor signals to the cerebral cortex and a function of regulation of consciousness, sleep, and alertness (Taber et al., 2004). It is also a key structure in memory and emotion and is known to be involved in the pathophysiology of mood disorders (Taber et al., 2004). In early 1980s, Angelini et al. characterized a depressive syndrome as a very frequent side effect after stereotaxic thalamotomy in patients with abnormal movements (Angelini et al., 1982). Later, Young et al. pointed out the role of the anterior and mediodorsal thalamus in the expression and experience of emotion (Young et al., 2004).

Our findings exhibited a GM volume reduction in ventral lateral nucleus and medial dorsal nucleus. In contrast with the large number of studies (Bora et al., 2012), only two recent analyses have revealed volumetric reductions in this regions in MDD (Nugent et al., 2013; Webb et al., 2014).

Besides, a recent study suggested a significant correlation between severity of depression and anxiety symptoms and thalamic reductions in GM volume in an adolescent MDD group compared to healthy controls (Hagan et al., 2015). This study is in accordance with our clinical results in which NR patients had significant higher anxiety score on the HAM-A scale at baseline. This result suggests that thalamic volume reduction plays a role in the outcome of a MDE possibly via its involvement in the pathophysiology of emotion such as anxiety. It could be interesting to explore the proper role of the thalamus in anxious dimension and prediction of evolution of one episode.

#### 4.4. The role of cerebellum in depression

After correcting for bipolar comorbidity, GM volume increase in cerebellum in the NR group at baseline did not remain significant. This result can be discussed regarding two aspects, either the loss of power of our statistical analysis or the effect of bipolar disorder (BD) on GM volume in depressed patients. Therefore, relative increasing of GM volume between NR and R patient could be almost explained by the bipolar condition. In line with this, a recent meta-analysis has shown that GM volume decrease in cerebellum is more pronounced in MDD than BD, relative

to healthy controls (Wise et al., 2017). As we didn't have a control group, BD could explain the relative increase in cerebellum in NR patients. In contrast to the large number of imaging studies exploring cerebral cortex in MDD, fewer morphometric MRI studies have assessed cerebellum in depression. Given its well-described role in motor control; particularly in coordination, precision, and accurate timing, cerebellum was recently well-recognized to participate in the organization of higher order functions; in both cognitive and affective processing control (Adamaszek et al., 2017; J. R. Phillips et al., 2015). More precisely, prior studies showed cerebellar involvement in elaborating negative emotions (Turner et al., 2007; Xu et al., 2017). Impairments in subjective experiences of pleasant emotions in response to positive stimuli have been reported in patients with cerebellar lesions (Adamaszek et al., 2017; Turner et al., 2007). According to Clausi et al., this region has a role in modulating the unconscious and conscious levels of emotional processing (Clusi et al., 2017). However, previous whole brain structural MRI studies investigating GM volumes abnormalities in MDD have reported different results regarding the cerebellum ranging from atrophy (Fossati, 2015; T. S. Frodl et al., 2008; Peng et al., 2011) to no significant difference (Guo et al., 2013) in MDD patients compared to healthy controls. Then, Depping et al. showed that cerebellar volume increase following ECT was associated with HAM-D score reduction (Depping et al., 2017). Taken together, accumulating evidences are converging toward volume abnormalities located in cerebellum in depression. However, our study, in line with Wise et al., highlighted that it may to be more related to bipolar depression than MDD disorder (Wise et al., 2017).

#### 4.5. Limitations

Our results have to be discussed through some limitations. First, the relative small sample-size may have affected the statistical power of our analyses. Second, anxiety levels should be taken into consideration when interpreting our results. Third, patients recruited were not drug-free but all were treated with antidepressants, antipsychotics or mood stabilizers. Nevertheless, this has been taken into account in our analyses. . Furthermore, it should be noted that despite patients benefited from adapted therapeutic strategies, this have not been systematically controlled because of the observational design. Fourth, the absence of healthy control group limits the generalizability of these findings. Fifth, we have to notice that according to our CGI-I criteria of treatment response, our R group meets for 73% the criteria of remission. Therefore, our findings could be viewed as biomarkers of remission rather than treatment response.

#### 5. Conclusion

This cross-sectional study focused on structural abnormalities associated with poor outcome at 6 months in patients with MDE. The most striking result were that NR patients were characterized by GM volume decrease in thalamus. Thus, patients were also more anxious than R patients at baseline. Consistent with our clinical results and prior findings, the implication of these regions in outcome of an MDE could be linked with the severity of the depressive state through their involvement in anxious dimension. In addition to their role in the physiopathology of depression, our results have highlighted the implication of thalamic-fronto-cortico-cerebellar circuit in the prognosis of an episode. Future studies could go further by focusing on anxiety dimension in order to identify the proper role of the thalamus and cerebellum in a sample of greater size to unambiguously rule out the lack of power. These findings suggest that GM abnormalities are of high interest for the research of “routine care biomarkers based-approaches” of poor outcome of an MDE. These biomarkers could be very useful in order to define biotypes of patients at risk of treatment resistance.

## Acknowledgments

MRI data acquisition was supported by the Neurinfo MRI research facility from the University of Rennes I. Neurinfo is granted by the European Union (FEDER), the French State, the Brittany Council, Rennes Metropole, Inria, Inserm and the University Hospital of Rennes. This work has been funded by Institut des Neurosciences Cliniques de Rennes (INCR). The authors thank Mr Stéphane Brousse and Mr Jacques Soulabaille for their involvement in the conduct of the study. The authors have no competing interests to declare. This work is dedicated to the memory of Christian Barillot, director of the former Visages now Empenn Imaging research unit in Rennes from 2006 to 2020.

## References

- Abbott, C.C., Jones, T., Lemke, N.T., Gallegos, P., McClintock, S.M., Mayer, A.R., Bustillo, J., Calhoun, V.D., 2014. Hippocampal structural and functional changes associated with electroconvulsive therapy response. *Transl. Psychiatry* 4, e483. <https://doi.org/10.1038/tp.2014.124>
- Adamaszek, M., D'Agata, F., Ferrucci, R., Habas, C., Keulen, S., Kirkby, K.C., Leggio, M., Mariën, P., Molinari, M., Moulton, E., Orsi, L., Van Overwalle, F., Papadelis, C., Priori, A., Sacchetti, B., Schutter, D.J., Styliadis, C., Verhoeven, J., 2017. Consensus Paper: Cerebellum and Emotion. *The Cerebellum* 16, 552–576. <https://doi.org/10.1007/s12311-016-0815-8>
- Angelini, L., Nardocci, N., Bono, R., Broggi, G., 1982. Depression after stereotactic thalamotomy in patients with abnormal movements. *Ital. J. Neurol. Sci.* 3, 301–310.
- Ashburner, J., 2007. A fast diffeomorphic image registration algorithm. *NeuroImage* 38, 95–113. <https://doi.org/10.1016/j.neuroimage.2007.07.007>

- Bauer, M., Severus, E., Möller, H.-J., Young, A.H., WFSBP Task Force on Unipolar Depressive Disorders, 2017. Pharmacological treatment of unipolar depressive disorders: summary of WFSBP guidelines. *Int. J. Psychiatry Clin. Pract.* 21, 166–176. <https://doi.org/10.1080/13651501.2017.1306082>
- Beck, A.T., Ward, C.H., Mendelson, M., Mock, J., Erbaugh, J., 1961. An inventory for measuring depression. *Arch. Gen. Psychiatry* 4, 561–571. <https://doi.org/10.1001/archpsyc.1961.01710120031004>
- Bennabi, D., Yrondi, A., Charpeaud, T., Genty, J.-B., Destouches, S., Lancrenon, S., Allaili, N., Bellivier, F., Bougerol, T., Camus, V., Doumy, O., Dorey, J.-M., Haesebaert, F., Holtzmann, J., Lançon, C., Lefebvre, M., Moliere, F., Nieto, I., Rabu, C., Richieri, R., Schmitt, L., Stephan, F., Vaiva, G., Walter, M., Leboyer, M., El-Hage, W., Aouizerate, B., Haffen, E., Llorca, P.-M., Courtet, P., 2019. Clinical guidelines for the management of depression with specific comorbid psychiatric conditions French recommendations from experts (the French Association for Biological Psychiatry and Neuropsychopharmacology and the fondation FondaMental). *BMC Psychiatry* 19, 50. <https://doi.org/10.1186/s12888-019-2025-7>
- Biomarkers and surrogate endpoints: Preferred definitions and conceptual framework, 2001. *Clin. Pharmacol. Ther.* 69, 89–95. <https://doi.org/10.1067/mcp.2001.113989>
- Bora, E., Fornito, A., Pantelis, C., Yücel, M., 2012. Gray matter abnormalities in Major Depressive Disorder: A meta-analysis of voxel based morphometry studies. *J. Affect. Disord.* 138, 9–18. <https://doi.org/10.1016/j.jad.2011.03.049>
- Busner, J., Targum, S.D., 2007. The clinical global impressions scale: applying a research tool in clinical practice. *Psychiatry Edgmont Pa Townsh.* 4, 28–37.
- Charpeaud, T., Genty, J.-B., Destouches, S., Yrondi, A., Lancrenon, S., Alaïli, N., Bellivier, F., Bennabi, D., Bougerol, T., Camus, V., D'amato, T., Doumy, O., Haesebaert, F., Holtzmann, J., Lançon, C., Lefebvre, M., Moliere, F., Nieto, I., Richieri, R., Schmitt, L., Stephan, F., Vaiva, G., Walter, M., Leboyer, M., El-Hage, W., Haffen, E., Llorca, P.-M., Courtet, P., Aouizerate, B., 2017. Prise en charge des troubles dépressifs résistants : recommandations françaises formalisées par des experts de l'AFBPN et de la fondation FondaMental. *L'Encéphale* 43, S1–S24. [https://doi.org/10.1016/S0013-7006\(17\)30155-0](https://doi.org/10.1016/S0013-7006(17)30155-0)
- Chen, C.-H., Ridler, K., Suckling, J., Williams, S., Fu, C.H.Y., Merlo-Pich, E., Bullmore, E., 2007. Brain Imaging Correlates of Depressive Symptom Severity and Predictors of Symptom Improvement After Antidepressant Treatment. *Biol. Psychiatry* 62, 407–414. <https://doi.org/10.1016/j.biopsych.2006.09.018>
- Clausi, S., Iacobacci, C., Lupo, M., Olivito, G., Molinari, M., Leggio, M., 2017. The Role of the Cerebellum in Unconscious and Conscious Processing of Emotions: A Review. *Appl. Sci.* 7, 521. <https://doi.org/10.3390/app7050521>
- Costafreda, S.G., Chu, C., Ashburner, J., Fu, C.H.Y., 2009. Prognostic and Diagnostic Potential of the Structural Neuroanatomy of Depression. *PLoS ONE* 4, e6353. <https://doi.org/10.1371/journal.pone.0006353>
- Depping, M.S., Nolte, H.M., Hirjak, D., Palm, E., Hofer, S., Stieltjes, B., Maier-Hein, K., Sambataro, F., Wolf, R.C., Thomann, P.A., 2017. Cerebellar volume change in response to electroconvulsive therapy in patients with major depression. *Prog. Neuropsychopharmacol. Biol. Psychiatry* 73, 31–35. <https://doi.org/10.1016/j.pnpbp.2016.09.007>
- Fonseka, T.M., MacQueen, G.M., Kennedy, S.H., 2018. Neuroimaging biomarkers as predictors of treatment outcome in Major Depressive Disorder. *J. Affect. Disord.* 233, 21–35. <https://doi.org/10.1016/j.jad.2017.10.049>
- Fossati, P., 2015. Imagerie cérébrale en psychiatrie: contributions physiopathologiques de la neuro-imagerie. Lavoisier Médecine Sciences, Cachan.
- Frodl, T.S., Koutsouleris, N., Bottlender, R., Born, C., Jäger, M., Scupin, I., Reiser, M., Möller, H.-J., Meisenzahl, E.M., 2008. Depression-Related Variation in Brain Morphology Over 3 Years: Effects of Stress? *Arch. Gen. Psychiatry* 65, 1156. <https://doi.org/10.1001/archpsyc.65.10.1156>

- Fu, C.H.Y., Steiner, H., Costafreda, S.G., 2013. Predictive neural biomarkers of clinical response in depression: A meta-analysis of functional and structural neuroimaging studies of pharmacological and psychological therapies. *Neurobiol. Dis.* 52, 75–83. <https://doi.org/10.1016/j.nbd.2012.05.008>
- Fujino, J., Yamasaki, N., Miyata, J., Sasaki, H., Matsukawa, N., Takemura, A., Tei, S., Sugihara, G., Aso, T., Fukuyama, H., Takahashi, H., Inoue, K., Murai, T., 2015. Anterior cingulate volume predicts response to cognitive behavioral therapy in major depressive disorder. *J. Affect. Disord.* 174, 397–399. <https://doi.org/10.1016/j.jad.2014.12.009>
- Furtado, C.P., Hoy, K.E., Maller, J.J., Savage, G., Daskalakis, Z.J., Fitzgerald, P.B., 2012. Cognitive and volumetric predictors of response to repetitive transcranial magnetic stimulation (rTMS) — A prospective follow-up study. *Psychiatry Res. Neuroimaging* 202, 12–19. <https://doi.org/10.1016/j.psychres.2012.02.004>
- Gong, Q., Wu, Q., Scarpazza, C., Lui, S., Jia, Z., Marquand, A., Huang, X., McGuire, P., Mechelli, A., 2011. Prognostic prediction of therapeutic response in depression using high-field MR imaging. *Neuroimage* 55, 1497–1503.
- Guo, W., Liu, F., Liu, J., Yu, L., Zhang, Z., Zhang, J., Chen, H., Xiao, C., 2013. Is there a cerebellar compensatory effort in first-episode, treatment-naïve major depressive disorder at rest? *Prog. Neuropsychopharmacol. Biol. Psychiatry* 46, 13–18. <https://doi.org/10.1016/j.pnpbp.2013.06.009>
- Guy, W., 1976. Assessment manual for psychopharmacology.
- Hagan, C.C., Graham, J.M.E., Tait, R., Widmer, B., van Nieuwenhuizen, A.O., Ooi, C., Whitaker, K.J., Simas, T., Bullmore, E.T., Lennox, B.R., Sahakian, B.J., Goodyer, I.M., Suckling, J., 2015. Adolescents with current major depressive disorder show dissimilar patterns of age-related differences in ACC and thalamus. *NeuroImage Clin.* 7, 391–399. <https://doi.org/10.1016/j.nicl.2014.12.019>
- Hamilton M., 1959. The assessment of anxiety states by rating. *Br J Med Psychol* 50–55.
- Johnston, B.A., Steele, J.D., Tolomeo, S., Christmas, D., Matthews, K., 2015. Structural MRI-Based Predictions in Patients with Treatment-Refractory Depression (TRD). *PLOS ONE* 10, e0132958. <https://doi.org/10.1371/journal.pone.0132958>
- Kennedy, S.H., Lam, R.W., McIntyre, R.S., Tourjman, S.V., Bhat, V., Blier, P., Hasnain, M., Jollant, F., Levitt, A.J., MacQueen, G.M., McInerney, S.J., McIntosh, D., Milev, R.V., Müller, D.J., Parikh, S.V., Pearson, N.L., Ravindran, A.V., Uher, R., CANMAT Depression Work Group, 2016. Canadian Network for Mood and Anxiety Treatments (CANMAT) 2016 Clinical Guidelines for the Management of Adults with Major Depressive Disorder: Section 3. Pharmacological Treatments. *Can. J. Psychiatry Rev. Can. Psychiatr.* 61, 540–560. <https://doi.org/10.1177/0706743716659417>
- Kessler, R.C., Berglund, P., Demler, O., Jin, R., Koretz, D., Merikangas, K.R., Rush, A.J., Walters, E.E., Wang, P.S., National Comorbidity Survey Replication, 2003. The epidemiology of major depressive disorder: results from the National Comorbidity Survey Replication (NCS-R). *JAMA* 289, 3095–3105. <https://doi.org/10.1001/jama.289.23.3095>
- Korgaonkar, M.S., Rekshan, W., Gordon, E., Rush, A.J., Williams, L.M., Blasey, C., Grieve, S.M., 2015. Magnetic Resonance Imaging Measures of Brain Structure to Predict Antidepressant Treatment Outcome in Major Depressive Disorder. *EBioMedicine* 2, 37–45. <https://doi.org/10.1016/j.ebiom.2014.12.002>
- Kozak, M.J., Cuthbert, B.N., 2016. The NIMH Research Domain Criteria Initiative: Background, Issues, and Pragmatics: NIMH Research Domain Criteria initiative. *Psychophysiology* 53, 286–297. <https://doi.org/10.1111/psyp.12518>
- Leucht, S., Fennema, H., Engel, R., Kaspers-Janssen, M., Lepping, P., Szegedi, A., 2013. What does the HAMD mean? *J. Affect. Disord.* 148, 243–248. <https://doi.org/10.1016/j.jad.2012.12.001>
- Li, C.-T., Lin, C.-P., Chou, K.-H., Chen, I.-Y., Hsieh, J.-C., Wu, C.-L., Lin, W.-C., Su, T.-P., 2010. Structural and cognitive deficits in remitting and non-remitting recurrent depression: A voxel-based morphometric study. *NeuroImage* 50, 347–356. <https://doi.org/10.1016/j.neuroimage.2009.11.021>

- Liu, F., Guo, W., Yu, D., Gao, Q., Gao, K., Xue, Z., Du, H., Zhang, J., Tan, C., Liu, Z., Zhao, J., Chen, H., 2012. Classification of Different Therapeutic Responses of Major Depressive Disorder with Multivariate Pattern Analysis Method Based on Structural MR Scans. *PLoS ONE* 7, e40968. <https://doi.org/10.1371/journal.pone.0040968>
- Ma, C., Ding, J., Li, J., Guo, W., Long, Z., Liu, F., Gao, Q., Zeng, L., Zhao, J., Chen, H., 2012. Resting-State Functional Connectivity Bias of Middle Temporal Gyrus and Caudate with Altered Gray Matter Volume in Major Depression. *PLoS ONE* 7, e45263. <https://doi.org/10.1371/journal.pone.0045263>
- Machino, A., Kunisato, Y., Matsumoto, T., Yoshimura, S., Ueda, K., Yamawaki, Y., Okada, G., Okamoto, Y., Yamawaki, S., 2014. Possible involvement of rumination in gray matter abnormalities in persistent symptoms of major depression: An exploratory magnetic resonance imaging voxel-based morphometry study. *J. Affect. Disord.* 168, 229–235. <https://doi.org/10.1016/j.jad.2014.06.030>
- Marin, R.S., Biedrzycki, R.C., Firinciogullari, S., 1991. Reliability and validity of the Apathy Evaluation Scale. *Psychiatry Res.* 38, 143–162.
- Micoulaud-Franchi, J.-A., Quiles, C., Batail, J.-M., Lancon, C., Masson, M., Dumas, G., Cermolacce, M., 2018. Making psychiatric semiology great again: A semiologic, not nosologic challenge. *L'Encéphale* 44, 343–353. <https://doi.org/10.1016/j.encep.2018.01.007>
- Min, J.-A., Lee, N.-B., Lee, C.-U., Lee, C., Chae, J.-H., 2012. Low trait anxiety, high resilience, and their interaction as possible predictors for treatment response in patients with depression. *J. Affect. Disord.* 137, 61–69. <https://doi.org/10.1016/j.jad.2011.12.026>
- Montgomery, S.A., Asberg, M., 1979. A new depression scale designed to be sensitive to change. *Br. J. Psychiatry J. Ment. Sci.* 134, 382–389.
- Moreno-Rius, J., 2018. The cerebellum in fear and anxiety-related disorders. *Prog. Neuropsychopharmacol. Biol. Psychiatry* 85, 23–32. <https://doi.org/10.1016/j.pnpbp.2018.04.002>
- Murray, C.J.L., Vos, T., Lozano, R., Naghavi, M., Flaxman, A.D., Michaud, C., Ezzati, M., Shibuya, K., Salomon, J.A., Abdalla, S., Aboyans, V., Abraham, J., Ackerman, I., Aggarwal, R., Ahn, S.Y., Ali, M.K., Alvarado, M., Anderson, H.R., Anderson, L.M., Andrews, K.G., Atkinson, C., Baddour, L.M., Bahalim, A.N., Barker-Collo, S., Barrero, L.H., Bartels, D.H., Basáñez, M.-G., Baxter, A., Bell, M.L., Benjamin, E.J., Bennett, D., Bernabé, E., Bhalla, K., Bhandari, B., Bikbov, B., Bin Abdulhak, A., Birbeck, G., Black, J.A., Blencowe, H., Blore, J.D., Blyth, F., Bolliger, I., Bonaventure, A., Boufous, S., Bourne, R., Boussinesq, M., Braithwaite, T., Brayne, C., Bridgett, L., Brooker, S., Brooks, P., Brugha, T.S., Bryan-Hancock, C., Bucello, C., Buchbinder, R., Buckle, G., Budke, C.M., Burch, M., Burney, P., Burstein, R., Calabria, B., Campbell, B., Canter, C.E., Carabin, H., Carapetis, J., Carmona, L., Cella, C., Charlson, F., Chen, H., Cheng, A.T.-A., Chou, D., Chugh, S.S., Coffeng, L.E., Colan, S.D., Colquhoun, S., Colson, K.E., Condon, J., Connor, M.D., Cooper, L.T., Corriere, M., Cortinovis, M., de Vaccaro, K.C., Couser, W., Cowie, B.C., Criqui, M.H., Cross, M., Dabhadkar, K.C., Dahiya, M., Dahodwala, N., Damsere-Derry, J., Danaei, G., Davis, A., De Leo, D., Degenhardt, L., Dellavalle, R., Delossantos, A., Denenberg, J., Derrett, S., Des Jarlais, D.C., Dharmaratne, S.D., Dherani, M., Diaz-Torne, C., Dolk, H., Dorsey, E.R., Driscoll, T., Duber, H., Ebel, B., Edmond, K., Elbaz, A., Ali, S.E., Erskine, H., Erwin, P.J., Espindola, P., Ewoigbokhan, S.E., Farzadfar, F., Feigin, V., Felson, D.T., Ferrari, A., Ferri, C.P., Fèvre, E.M., Finucane, M.M., Flaxman, S., Flood, L., Foreman, K., Forouzanfar, M.H., Fowkes, F.G.R., Fransen, M., Freeman, M.K., Gabbe, B.J., Gabriel, S.E., Gakidou, E., Ganatra, H.A., Garcia, B., Gaspari, F., Gillum, R.F., Gmel, G., Gonzalez-Medina, D., Gosselin, R., Grainger, R., Grant, B., Groeger, J., Guillemin, F., Gunnell, D., Gupta, R., Haagsma, J., Hagan, H., Halasa, Y.A., Hall, W., Haring, D., Haro, J.M., Harrison, J.E., Havmoeller, R., Hay, R.J., Higashi, H., Hill, C., Hoen, B., Hoffman, H., Hotez, P.J., Hoy, D., Huang, J.J., Ibeanusi, S.E., Jacobsen, K.H., James, S.L., Jarvis, D., Jasrasaria, R., Jayaraman, S., Johns, N., Jonas, J.B., Karthikeyan, G., Kassebaum, N., Kawakami, N., Keren, A., Khoo, J.-P., King, C.H., Knowlton, L.M., Kobusingye, O., Koranteng, A.,



- Krishnamurthi, R., Laden, F., Lalloo, R., Laslett, L.L., Lathlean, T., Leasher, J.L., Lee, Y.Y., Leigh, J., Levinson, D., Lim, S.S., Limb, E., Lin, J.K., Lipnick, M., Lipshultz, S.E., Liu, W., Loane, M., Ohno, S.L., Lyons, R., Mabweijano, J., MacIntyre, M.F., Malekzadeh, R., Mallinger, L., Manivannan, S., Marcenes, W., March, L., Margolis, D.J., Marks, G.B., Marks, R., Matsumori, A., Matzopoulos, R., Mayosi, B.M., McAnulty, J.H., McDermott, M.M., McGill, N., McGrath, J., Medina-Mora, M.E., Meltzer, M., Mensah, G.A., Merriman, T.R., Meyer, A.-C., Miglioli, V., Miller, M., Miller, T.R., Mitchell, P.B., Mock, C., Mocumbi, A.O., Moffitt, T.E., Mokdad, A.A., Monasta, L., Montico, M., Moradi-Lakeh, M., Moran, A., Morawska, L., Mori, R., Murdoch, M.E., Mwaniki, M.K., Naidoo, K., Nair, M.N., Naldi, L., Narayan, K.M.V., Nelson, P.K., Nelson, R.G., Nevitt, M.C., Newton, C.R., Nolte, S., Norman, P., Norman, R., O'Donnell, M., O'Hanlon, S., Olives, C., Omer, S.B., Ortblad, K., Osborne, R., Ozgediz, D., Page, A., Pahari, B., Pandian, J.D., Rivero, A.P., Patten, S.B., Pearce, N., Padilla, R.P., Perez-Ruiz, F., Perico, N., Pesudovs, K., Phillips, D., Phillips, M.R., Pierce, K., Pion, S., Polanczyk, G.V., Polinder, S., Pope, C.A., Popova, S., Porrini, E., Pourmalek, F., Prince, M., Pullan, R.L., Ramaiah, K.D., Ranganathan, D., Razavi, H., Regan, M., Rehm, J.T., Rein, D.B., Remuzzi, G., Richardson, K., Rivara, F.P., Roberts, T., Robinson, C., De León, F.R., Ronfani, L., Room, R., Rosenfeld, L.C., Rushton, L., Sacco, R.L., Saha, S., Sampson, U., Sanchez-Riera, L., Sanman, E., Schwebel, D.C., Scott, J.G., Segui-Gomez, M., Shahraz, S., Shepard, D.S., Shin, H., Shivakoti, R., Singh, D., Singh, G.M., Singh, J.A., Singleton, J., Sleet, D.A., Sliwa, K., Smith, E., Smith, J.L., Stapelberg, N.J.C., Steer, A., Steiner, T., Stolk, W.A., Stovner, L.J., Sudfeld, C., Syed, S., Tamburlini, G., Tavakkoli, M., Taylor, H.R., Taylor, J.A., Taylor, W.J., Thomas, B., Thomson, W.M., Thurston, G.D., Tleyjeh, I.M., Tonelli, M., Towbin, J.A., Truelsen, T., Tsilimbaris, M.K., Ubeda, C., Undurraga, E.A., van der Werf, M.J., van Os, J., Vavilala, M.S., Venketasubramanian, N., Wang, M., Wang, W., Watt, K., Weatherall, D.J., Weinstock, M.A., Weintraub, R., Weisskopf, M.G., Weissman, M.M., White, R.A., Whiteford, H., Wiebe, N., Wiersma, S.T., Wilkinson, J.D., Williams, H.C., Williams, S.R.M., Witt, E., Wolfe, F., Woolf, A.D., Wulf, S., Yeh, P.-H., Zaidi, A.K.M., Zheng, Z.-J., Zonies, D., Lopez, A.D., AlMazroa, M.A., Memish, Z.A., 2012. Disability-adjusted life years (DALYs) for 291 diseases and injuries in 21 regions, 1990-2010: a systematic analysis for the Global Burden of Disease Study 2010. *Lancet Lond. Engl.* 380, 2197–2223. [https://doi.org/10.1016/S0140-6736\(12\)61689-4](https://doi.org/10.1016/S0140-6736(12)61689-4)
- Nathan, P.E., Gorman, J.M. (Eds.), 2007. *A guide to treatments that work*, 3rd ed. ed. Oxford University Press, Oxford ; New York.
- Nugent, A.C., Davis, R.M., Zarate, C.A., Drevets, W.C., 2013. Reduced thalamic volumes in major depressive disorder. *Psychiatry Res. Neuroimaging* 213, 179–185. <https://doi.org/10.1016/j.pscychresns.2013.05.004>
- Peng, J., Liu, J., Nie, B., Li, Y., Shan, B., Wang, G., Li, K., 2011. Cerebral and cerebellar gray matter reduction in first-episode patients with major depressive disorder: A voxel-based morphometry study. *Eur. J. Radiol.* 80, 395–399. <https://doi.org/10.1016/j.ejrad.2010.04.006>
- Phillips, J.L., Batten, L.A., Tremblay, P., Aldosary, F., Blier, P., 2015. A Prospective, Longitudinal Study of the Effect of Remission on Cortical Thickness and Hippocampal Volume in Patients with Treatment-Resistant Depression. *Int. J. Neuropsychopharmacol.* 18, pyv037–pyv037. <https://doi.org/10.1093/ijnp/pyv037>
- Phillips, J.R., Hewedi, D.H., Eissa, A.M., Moustafa, A.A., 2015. The Cerebellum and Psychiatric Disorders. *Front. Public Health* 3. <https://doi.org/10.3389/fpubh.2015.00066>
- Rush, A.J., Trivedi, M.H., Wisniewski, S.R., Nierenberg, A.A., Stewart, J.W., Warden, D., Niederhe, G., Thase, M.E., Lavori, P.W., Lebowitz, B.D., McGrath, P.J., Rosenbaum, J.F., Sackeim, H.A., Kupfer, D.J., Luther, J., Fava, M., 2006. Acute and longer-term outcomes in depressed outpatients requiring one or several treatment steps: a STAR\*D report. *Am. J. Psychiatry* 163, 1905–1917. <https://doi.org/10.1176/appi.ajp.163.11.1905>

- Sackeim, H.A., 2001. The definition and meaning of treatment-resistant depression. *J. Clin. Psychiatry* 62 Suppl 16, 10–17.
- Sämann, P.G., Höhn, D., Chechko, N., Kloiber, S., Lucae, S., Ising, M., Holsboer, F., Czisch, M., 2013. Prediction of antidepressant treatment response from gray matter volume across diagnostic categories. *Eur. Neuropsychopharmacol. J. Eur. Coll. Neuropsychopharmacol.* 23, 1503–1515. <https://doi.org/10.1016/j.euroneuro.2013.07.004>
- Sandu, A.-L., Artiges, E., Galinowski, A., Gallarda, T., Bellivier, F., Lemaitre, H., Granger, B., Ringuenet, D., Tzavara, E.T., Martinot, J.-L., Paillère Martinot, M.-L., 2017. Amygdala and regional volumes in treatment-resistant *versus* nontreatment-resistant depression patients: SANDU et al. *Depress. Anxiety*. <https://doi.org/10.1002/da.22675>
- Schmaal, L., Marquand, A.F., Rhebergen, D., van Tol, M.-J., Ruhé, H.G., van der Wee, N.J.A., Veltman, D.J., Penninx, B.W.J.H., 2015. Predicting the Naturalistic Course of Major Depressive Disorder Using Clinical and Multimodal Neuroimaging Information: A Multivariate Pattern Recognition Study. *Biol. Psychiatry* 78, 278–286. <https://doi.org/10.1016/j.biopsych.2014.11.018>
- Serra-Blasco, M., de Diego-Adeliño, J., Vives-Gilabert, Y., Trujols, J., Puigdemont, D., Carceller-Sindreu, M., Pérez, V., Álvarez, E., Portella, M.J., 2016. Naturalistic course of major depressive disorder predicted by clinical and structural neuroimaging data: a 5-year follow-up: Research Article: Prediction of Long-Term Depressive Outcomes. *Depress. Anxiety* 33, 1055–1064. <https://doi.org/10.1002/da.22522>
- Sheehan, D.V., Lecrubier, Y., Sheehan, K.H., Amorim, P., Janavs, J., Weiller, E., Hergueta, T., Baker, R., Dunbar, G.C., 1998. The Mini-International Neuropsychiatric Interview (M.I.N.I.): the development and validation of a structured diagnostic psychiatric interview for DSM-IV and ICD-10. *J. Clin. Psychiatry* 59 Suppl 20, 22-33;quiz 34-57.
- Snaith, R.P., Hamilton, M., Morley, S., Humayan, A., Hargreaves, D., Trigwell, P., 1995. A scale for the assessment of hedonic tone the Snaith-Hamilton Pleasure Scale. *Br. J. Psychiatry* 167, 99–103. <https://doi.org/10.1192/bjp.167.1.99>
- Solomon, D.A., 1997. Recovery From Major Depression: A 10-Year Prospective Follow-up Across Multiple Episodes. *Arch. Gen. Psychiatry* 54, 1001. <https://doi.org/10.1001/archpsyc.1997.01830230033005>
- Spielberger, C. D., Gorsuch, R. L., Lushene, R., Vagg, P. R., Jacobs, G. A., 1983. Manual for the State-Trait Anxiety Inventory. Palo Alto CA, Consulting Psychologists Press.
- Taber, K.H., Wen, C., Khan, A., Hurley, R.A., 2004. The limbic thalamus. *J. Neuropsychiatry Clin. Neurosci.* 16, 127–132. <https://doi.org/10.1176/jnp.16.2.127>
- ten Have, M., Penninx, B.W.J.H., Tuithof, M., van Dorsselaer, S., Kleinjan, M., Spijker, J., de Graaf, R., 2017. Duration of major and minor depressive episodes and associated risk indicators in a psychiatric epidemiological cohort study of the general population. *Acta Psychiatr. Scand.* 136, 300–312. <https://doi.org/10.1111/acps.12753>
- Turner, B.M., Paradiso, S., Marvel, C.L., Pierson, R., Boles Ponto, L.L., Hichwa, R.D., Robinson, R.G., 2007. The cerebellum and emotional experience. *Neuropsychologia* 45, 1331–1341. <https://doi.org/10.1016/j.neuropsychologia.2006.09.023>
- Vasic, N., Walter, H., Höse, A., Wolf, R.C., 2008. Gray matter reduction associated with psychopathology and cognitive dysfunction in unipolar depression: A voxel-based morphometry study. *J. Affect. Disord.* 109, 107–116. <https://doi.org/10.1016/j.jad.2007.11.011>
- Webb, C.A., Weber, M., Mundy, E.A., Killgore, W.D.S., 2014. Reduced gray matter volume in the anterior cingulate, orbitofrontal cortex and thalamus as a function of mild depressive symptoms: a voxel-based morphometric analysis. *Psychol. Med.* 44, 2833–2843. <https://doi.org/10.1017/S0033291714000348>
- Whitwell, J.L., 2009. Voxel-based morphometry: an automated technique for assessing structural changes in the brain. *J. Neurosci. Off. J. Soc. Neurosci.* 29, 9661–9664. <https://doi.org/10.1523/JNEUROSCI.2160-09.2009>
- Widlöcher, D.J., 1983. Psychomotor retardation: Clinical, theoretical, and psychometric aspects. *Psychiatr. Clin. North Am.* 6, 27–40.

- Williams, L.M., 2017. Defining biotypes for depression and anxiety based on large-scale circuit dysfunction: a theoretical review of the evidence and future directions for clinical translation. *Depress. Anxiety* 34, 9–24. <https://doi.org/10.1002/da.22556>
- Williams, L.M., 2016. Precision psychiatry: a neural circuit taxonomy for depression and anxiety. *Lancet Psychiatry* 3, 472–480. [https://doi.org/10.1016/S2215-0366\(15\)00579-9](https://doi.org/10.1016/S2215-0366(15)00579-9)
- Wise, T., Radua, J., Via, E., Cardoner, N., Abe, O., Adams, T.M., Amico, F., Cheng, Y., Cole, J.H., de Azevedo Marques Périco, C., Dickstein, D.P., Farrow, T.F.D., Frodl, T., Wagner, G., Gotlib, I.H., Gruber, O., Ham, B.J., Job, D.E., Kempton, M.J., Kim, M.J., Koolschijn, P.C.M.P., Malhi, G.S., Mataix-Cols, D., McIntosh, A.M., Nugent, A.C., O'Brien, J.T., Pezzoli, S., Phillips, M.L., Sachdev, P.S., Salvatore, G., Selvaraj, S., Stanfield, A.C., Thomas, A.J., van Tol, M.J., van der Wee, N.J.A., Veltman, D.J., Young, A.H., Fu, C.H., Cleare, A.J., Arnone, D., 2017. Common and distinct patterns of grey-matter volume alteration in major depression and bipolar disorder: evidence from voxel-based meta-analysis. *Mol. Psychiatry* 22, 1455–1463. <https://doi.org/10.1038/mp.2016.72>
- Xu, L.-Y., Xu, F.-C., Liu, C., Ji, Y.-F., Wu, J.-M., Wang, Y., Wang, H.-B., Yu, Y.-Q., 2017. Relationship between cerebellar structure and emotional memory in depression. *Brain Behav.* 7, e00738. <https://doi.org/10.1002/brb3.738>
- Young, K.A., Holcomb, L.A., Yazdani, U., Hicks, P.B., German, D.C., 2004. Elevated neuron number in the limbic thalamus in major depression. *Am. J. Psychiatry* 161, 1270–1277. <https://doi.org/10.1176/appi.ajp.161.7.1270>

Variables (n=57)	M0				M6			
	Mean/n	sd / %	n	Range	Mean/n	sd / %	n	Range
<i>Sociodemographic</i>								
Age (years)	50.95	14.52	57	18 - 76				
Gender (female)	43	75.44%	57	-	43	75.44%	57	-
Disease duration (years)	16.92	15.37	57	0 - 57	17.21	14.63	57	0.67 - 57
Number of episodes	4.56	4.52	55	0 - 30	4.90	4.63	52	1 - 31
Number of suicidal attempts	1.22	2.11	55	0 - 10	1.20	2.18	54	0 - 10
Thase and Rush score > 2	24	47.10%	51	1 - 4	28	50.91%	55	1 - 5
<i>Comorbidities</i>								
Bipolar disorder :	20	35.71%	56	-	20	35.71%	56	-
type 1	3	5.26%	56	-	3	5.36%	56	-
type 2	10	17.54%	56	-	9	16.07%	56	-
type 3	7	12.28%	56	-	8	14.29%	56	-
Panic disorder	8	14.04%	57	-	9	15.79%	57	-
Generalized anxiety disorder	23	40.35%	57	-	19	33.33%	57	-
Social phobia	7	12.28%	57	-	8	14.04%	57	-
PTSD	5	8.77%	57	-	6	10.53%	57	-
<i>Medication</i>								
Antidepressant :								
- SSRI	8	14.04%	56	-	13	24.07%	54	-
- NSRI	22	38.60%	56	-	12	22.22%	54	-
- TCA	9	15.79%	56	-	15	27.78%	54	-
- others	13	22.81%	56	-	12	22.22%	54	-
Mood stabilizer :								
- Lithium	6	10.53%	56	-	10	18.52%	54	-
- Anticonvulsant	22	38.60%	56	-	20	37.04%	54	-
- Antipsychotic	23	40.35%	56	-	21	38.89%	54	-
Benzodiazepine	30	52.63%	56	-	23	42.59%	54	-
<i>Clinical variables</i>								
MADRS	26.67	5.65	57	14 - 43	15.11	10.50	57	0 - 40
BDI	17.00	7.46	52	4 - 33	11.80	8.95	55	0 - 35
CGI-S	4.48	2.25	42	0 - 7	3.05	1.59	56	1 - 6
HAMA	25.49	14.18	42	10 - 46	16.98	10.53	57	1 - 45
STAI-YB	61.54	11.49	56	34 - 79	54.40	13.83	53	24 - 78
SHAPS	5.28	3.87	57	0 - 14	3.56	3.92	55	0 - 14
WDRS	22.07	9.35	57	3 - 40	12.29	9.08	56	0 - 32
AES	40.65	8.66	57	24 - 69	38.61	11.74	57	18 - 63
YMRS	1.93	1.80	57	0 - 7	1.37	2.28	57	0 - 10

Table 1: Population description at baseline and at 6 months. sd: standard derivation; PTSD: Posttraumatic stress disorder; SSRI: Selective serotonin reuptake inhibitors; NSRI: Serotonin–norepinephrine reuptake inhibitors; TCA: Tricyclic antidepressants; MADRS: Montgomery–Åsberg Depression Rating Scale; BDI: Beck Depression Inventory; CGI-S: Clinical Global Impression-Severity; HAMA: Hamilton Anxiety Rating Scale; STAI : State-Trait Anxiety Inventory; SHAPS: Snaith Hamilton Pleasure Scale; WDRS: Widlöcher Depressive Retardation Scale; AES: Apathy Evaluation Scale; YMRS : Young Maniac Rating Scale

Variables at baseline (n=57)	Responder (n=27)			Non-responder (n=30)			<i>p-value</i>
	Mean/n	sd / %	n	Mean	sd / %	n	
<i>Sociodemographic variables</i>							
Age (years)	54.33	15.98	27	47.90	12.57	30	0.049b
Gender (female)	19	70.37%	27	24	80%%	30	0.399c
Education (years)	12.88	4.30	25	11.93	2.12	29	0.559b
Duration of illness (years)	20.90	18.60	27	13.33	10.87	30	0.221b
<i>Comorbidities</i>							
Bipolar disorder :	8	29.63%	27	12	41.37%	29	0.359c
type 1	1	3.70%	27	2	6.89%	29	1d
type 2	3	11.11%	27	7	24.14%	29	0.299d
type 3	4	14.82%	27	3	10.34%	29	0.700d
Panic disorder	2	9.09%	22	3	10.71%	28	1d
Generalized anxiety	11	40.74%	27	12	40.00%	28	0.955c
Social phobia	3	11.11%	27	4	13.79%	30	1d
PTSD	1	3.70%	27	4	13.33%	28	0.356d
Psychotic symptoms	2	7.41%	27	2	6.67%	30	1d
<i>Medication</i>							
Antidepressant :							
- SSRI	5	18.52%	27	3	10.34%	29	0.462d
- NSRI	13	48.15%	27	9	31.03%	29	0.190c
- TCA	5	18.51%	27	4	13.79%	29	0.725d
- others	6	22.22%	27	7	24.14%	29	0.865c
Mood stabilizer :							
- Lithium	4	15.39%	26	2	5.13%	29	0.406d
- Anticonvulsant	11	40.74%	27	11	37.93%	29	0.830c
- Antipsychotic	11	40.74%	27	12	41.38%	29	0.961c
Benzodiazepine	17	62.96%	27	13	44.83%	29	0.174c
Medication Load	3.41	1.05	27	3.00	1.19	30	0.198b
<i>Clinical variables</i>							
MADRS	26.86	5.74	22	26.50	4.94	28	0.815a
BDI	15.76	7.45	25	18.15	7.43	27	0.253a
HAMA	21.30	8.89	20	28.14	10.74	22	0.029a
STAI-YA	56.42	12.09	26	57.14	12.88	29	0.833a
STAI-YB	59.15	11.25	26	63.60	11.47	30	0.115b
SHAPS	4.37	3.53	27	6.10	4.03	30	0.100b
WDRS	24.00	9.84	27	20.33	8.70	30	0.144a
AES	39.04	6.32	27	42.10	10.21	30	0.175b

Table 2: Intergroup comparison: demographic and clinical characteristics at baseline between responder and non-responder patients. sd: standard derivation; PTSD: Posttraumatic stress disorder; SSRI: Selective serotonin reuptake inhibitors; NSRI: Serotonin–norepinephrine reuptake inhibitors; TCA: Tricyclic antidepressants; MADRS: Montgomery–Åsberg Depression Rating Scale; BDI: Beck Depression Inventory; CGI-S: Clinical Global Impression-Severity; HAMA: Hamilton Anxiety Rating Scale; STAI : State-Trait Anxiety Inventory; SHAPS: Snaith Hamilton Pleasure Scale; WDRS: Widlöcher Depressive Retardation Scale; AES: Apathy Evaluation Scale; a: Student test; b: Wilcoxon test ; c: Chi2 test ; d: Fisher test

Anatomic regions		Side	Cluster size	Coordinates of peak voxel in MNI space (mm)			Tmax score
				x	y	z	
NR < R							
Thalamus	Ventral Lateral Nucleus	L	300	-19	-26	16	3.3405
		R	574	9	-14	10	3.6938
	Medial Dorsal Nucleus	R	647	9	-15	10	3.6938
Frontal Lobe	Precentral gyrus	R	1995	67	-12	33	5.0364
Temporal Lobe	Middle Temporal Gyrus	R	729	70	-8	-18	3.2892
Parietal Lobe	Precuneus	L	1456	-36	-81	33	4.1393
	Middle Cingulum	R	493	6	-35	45	3.0970
NR > R							
Cerebellum	Anterior lobe	L	97	-7	-46	0	3.4653
Limbic Lobe	Posterior Cingulate Cortex	L	1206	-5	-55	10	3.4653

Table 3: Regions of statistically significant differences of volume at baseline between responder (R) and non-responder (NR) patients according to VBM analyses. VBM: Voxel-Based Morphometry; L: Left; R: Right; MNI: Montreal Neurological Institute coordinate system or template; Tmax: maximal statistical value of peak voxel showing differences of gray matter volume between two groups.

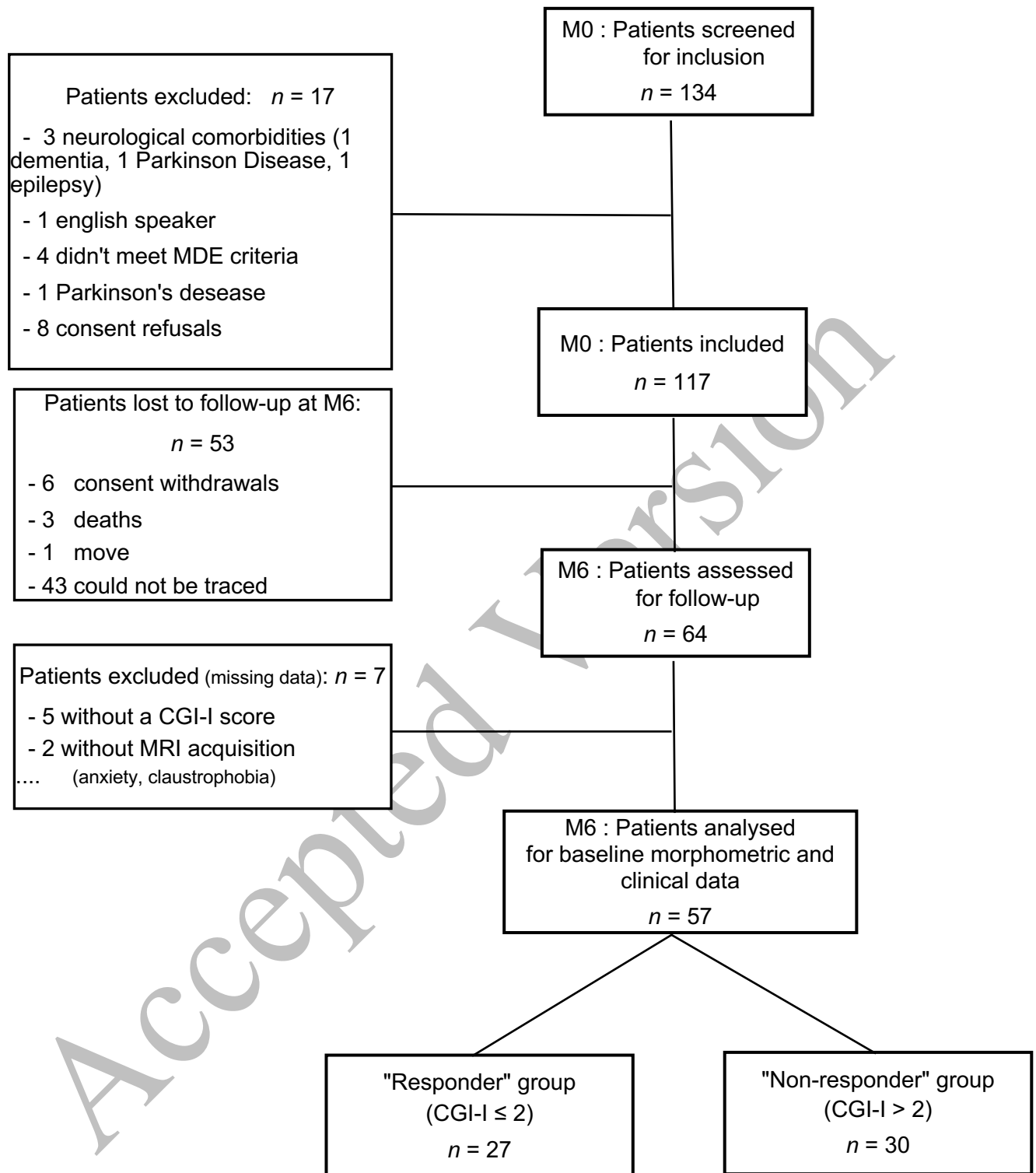


Figure 1 : Flow chart

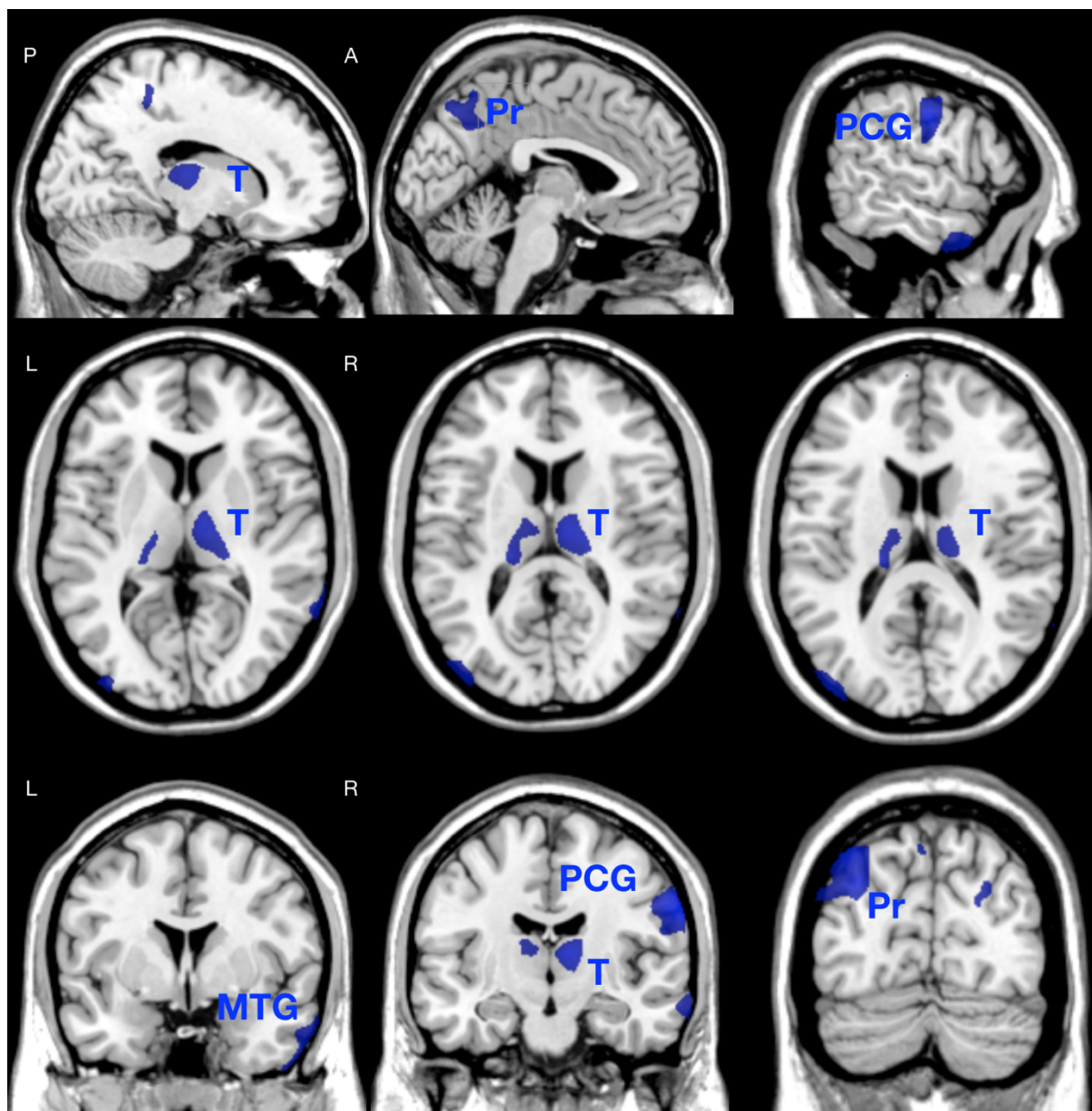


Figure 2: Regions showing significantly decreased GM volume in non-responder (NR) patients compared to responder (R) patients. P: posterior, A: anterior, L: left, R: right. T: thalamus, Pr: precuneus, PCG: posterior central gyrus, MTG: middle temporal gyrus.



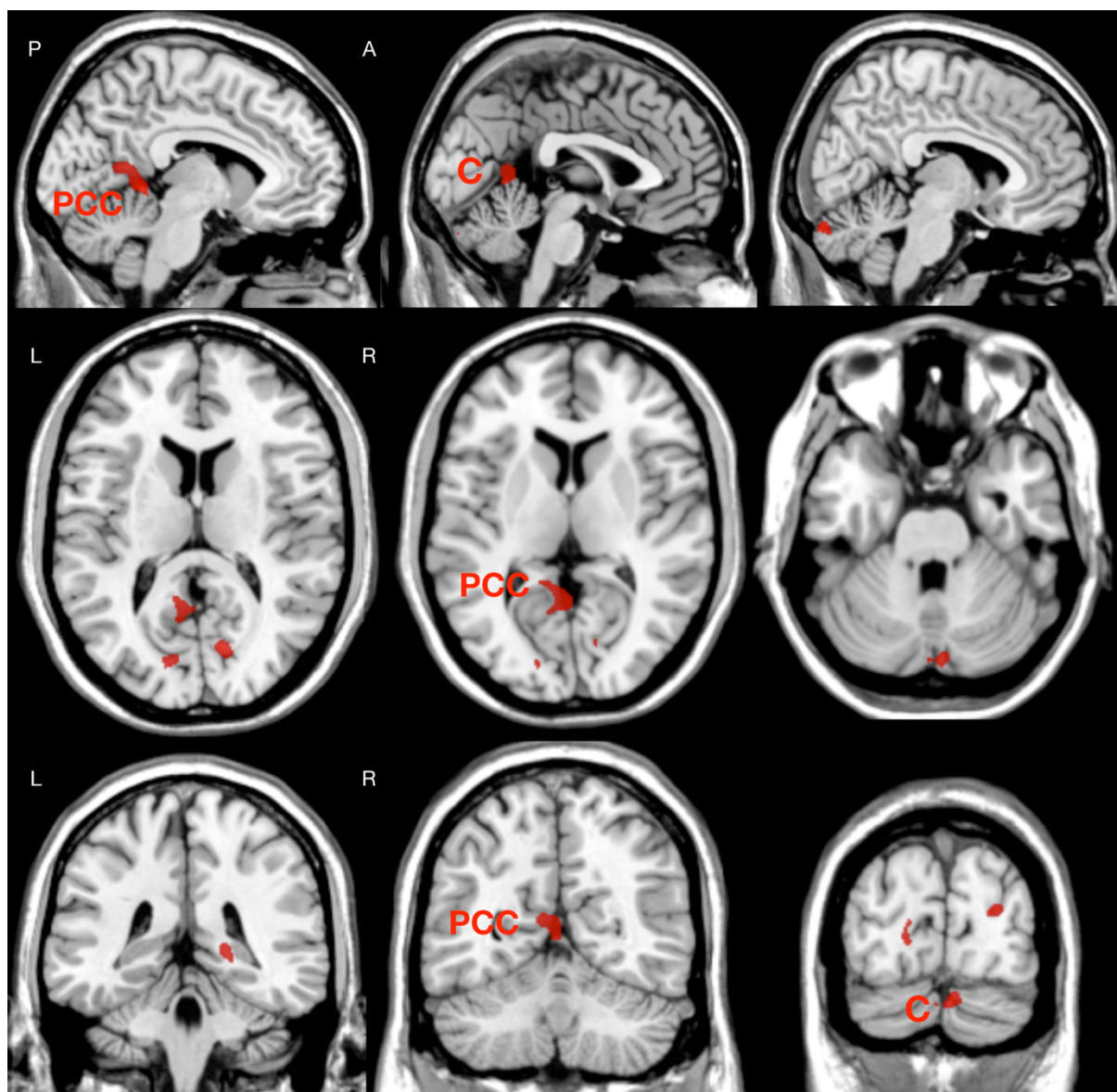


Figure 3: Regions showing significantly increased GM volume in non-responder (NR) patients compared to responder (R) patients. P: posterior, A: anterior, L: left, R: right. C: Cerebellum, PCC: Posterior Cingulate Cortex.