



HAL
open science

Phenotypic noise and the cost of complexity

Charles Rocabert, Guillaume Beslon, Carole Knibbe, Samuel Bernard

► **To cite this version:**

Charles Rocabert, Guillaume Beslon, Carole Knibbe, Samuel Bernard. Phenotypic noise and the cost of complexity. *Evolution - International Journal of Organic Evolution*, 2020, 10.1111/evo.14083 . hal-02920356

HAL Id: hal-02920356

<https://hal.science/hal-02920356v1>

Submitted on 24 Aug 2020

HAL is a multi-disciplinary open access archive for the deposit and dissemination of scientific research documents, whether they are published or not. The documents may come from teaching and research institutions in France or abroad, or from public or private research centers.

L'archive ouverte pluridisciplinaire **HAL**, est destinée au dépôt et à la diffusion de documents scientifiques de niveau recherche, publiés ou non, émanant des établissements d'enseignement et de recherche français ou étrangers, des laboratoires publics ou privés.

Phenotypic Noise and the Cost of Complexity

Charles Rocabert^{1,2}, Guillaume Beslon^{1,3}, Carole Knibbe^{1,4}, Samuel Bernard^{1,5*}

1 Inria, France.

2 Synthetic and Systems Biology Unit, Biological Research Centre, Szeged, Hungary.

3 Univ Lyon, INSA-Lyon, LIRIS, UMR5205, F-69621, Lyon, France.

4 Univ Lyon, INSA-Lyon, CarMeN laboratory, INSERM U1060, F-69621, Lyon, France.

5 Univ Lyon, CNRS, Institut Camille Jordan, UMR5208, F-69622, Lyon, France.

* bernard@math.univ-lyon1.fr

• Short running title

Phenotypic Noise and the Cost of Complexity

• Key words

Phenotypic noise, phenotypic complexity, cost of complexity, rate of evolution, dimensionality reduction, adaptive evolution.

• Corresponding author contact details

First name: Samuel

Last name: Bernard

E-mail: bernard@math.univ-lyon1.fr

Address:

Project-Team DRACULA

INRIA Rhône-Alpes

INRIA Antenne Lyon la Doua

Bâtiment CEI-2

56, Boulevard Niels Bohr

CS 52132

69603 Villeurbanne Cedex France

• Author contributions

Formal analysis: CR GB CK SB.

Methodology: CR GB CK SB.

Software: CR SB.

Writing – original draft: CR SB.

Writing – review & editing: CR GB CK SB.

• Acknowledgements

The authors want to thank Hugues Berry (INRIA Rhône-Alpes), Fabien Crauste (CNRS), Olivier Gandrillon (CNRS), Bahram Houchmandzadeh (CNRS), Etienne Rajon (Université Lyon 1), Gaël Yvert (CNRS) and all the partners of the EvoEvo project for fruitful discussions. This work was supported by the European Commission 7th Framework Programme 659 (FP7-ICT-2013.9.6 FET Proactive: Evolving Living Technologies) EvoEvo project 660 (ICT-610427). The authors declare no conflict of interest related to the work described herein.

• Data archival location

There is no data to be archived. Computer code is available at <https://github.com/charlesrocabert/SigmaFGM>.

Phenotypic Noise and the Cost of Complexity

Experimental studies demonstrate the existence of phenotypic diversity despite constant genotype and environment. Theoretical models based on a single phenotypic character predict that during an adaptation event, phenotypic noise should be positively selected far from the fitness optimum because it increases the fitness of the genotype, and then be selected against when the population reaches the optimum. It is suggested that because of this fitness gain, phenotypic noise should promote adaptive evolution. However, it is unclear how the selective advantage of phenotypic noise is linked to the rate of evolution, and whether any advantage would hold for more realistic, multi-dimensional phenotypes. Indeed, complex organisms suffer a cost of complexity, where beneficial mutations become rarer as the number of phenotypic characters increases. By using a quantitative genetics approach, we first show that for a one-dimensional phenotype, phenotypic noise promotes adaptive evolution on plateaus of positive fitness, independently from the direct selective advantage on fitness. Second, we show that for multi-dimensional phenotypes, phenotypic noise evolves to a low-dimensional configuration, with elevated noise in the direction of the fitness optimum. Such a dimensionality reduction of the phenotypic noise promotes adaptive evolution and numerical simulations show that it reduces the cost of complexity.

KEY WORDS: Phenotypic noise, phenotypic complexity, cost of complexity, rate of evolution, dimensionality reduction, adaptive evolution.

Isogenic populations of organisms often exhibit a diversity of phenotypes, even in constant environments. The importance of **phenotypic noise** (Yvert et al., 2013) has been highlighted with the development of experimental technologies measuring single-cell variability (Elowitz et al., 2002; Raser and O’Shea, 2005; Ohya et al., 2015). Recent experimental studies indicate that phenotypic noise affects organismal fitness, is controlled genetically and is evolvable, both in single-cell organisms (Ito et al., 2009; Viñuelas et al., 2012; Keren et al., 2016; Bódi et al., 2017; Duveau et al., 2018; Reyes et al., 2018) and multi-cellular organisms (Ordas et al., 2008; Hill and Mulder, 2010; Pelabon et al., 2010; Shen et al., 2012; Metzger et al., 2015; Mulder et al., 2016; Boukhibar and Barkoulas, 2016).

Phenotypic noise encompasses concepts such as *developmental noise* (Gavrilets and Hastings, 1994), *phenotypic heterogeneity* (Bódi et al., 2017), *cellular noise* (Hortsch and Kremling, 2018), *biological noise* (Eling et al., 2019), *intra-genotypic variability* (Bruijning et al., 2019), which take into account both intrinsic and extrinsic noises to varying degrees (Elowitz et al., 2002). In quantitative genetics, phenotypic noise is historically known as **environmental variance** (or **micro-environmental variability**) (Falconer and Robertson, 1956). Environmental variance has long been assumed to be deleterious, because it decreases the **genotypic fitness** close to the fitness optimum and flattens the fitness landscape. For example, essential genes and dosage-sensitive genes are under strong stabilizing selection and usually exhibit weak expression stochasticity (Fraser et al., 2004; Newman et al., 2006; Lehner, 2008). On the other hand, Lande (1980) suggested that phenotypic noise should increase the genotypic fitness far from the fitness optimum. This phenomenon is due to the curvature of the fitness landscape, which is commonly assumed Gaussian. Close to the optimum, the fitness landscape is concave (its second derivative is negative, see Methods), and phenotypic noise decreases the genotypic fitness. Far from the optimum (beyond the inflection points, Pal 1998), the fitness landscape is convex (its second derivative is positive), and phenotypic noise increases the genotypic fitness (Pal, 1998; Kawecki, 2000; Paenke et al., 2007; Zhang et al., 2009; Bruijning et al.,

2019). Hence, if the phenotypic noise level is evolvable, theoretical studies have shown that phenotypic noise should be positively selected in adaptive evolution because of its temporary positive effect on fitness (Pál and Miklós, 1999; Bruijning et al., 2019).

Since phenotypic noise increases the genotypic fitness of an organism far from the fitness optimum, it seems logical that it should facilitate adaptive evolution of the mean phenotype by increasing the fitness of beneficial mutations (Zhang et al., 2009), as suggested by recent experimental studies (Bódi et al., 2017; Schmutzer and Wagner, 2020). However, this claim is in contradiction with classical theory that states that phenotypic noise always reduces the **selection gradient** (Lande, 1975; Gavrillets and Hastings, 1994; Wang and Zhang, 2011; Mineta et al., 2015; Tufto, 2015). As suggested by Paenke et al. (2007), this apparent paradox has two origins: **(i)** Historically, a Gaussian shape has been chosen to represent the fitness landscape because it is a parsimonious approximation close to the optimum (Martin, 2014) and it “*has the merit of leading to algebraic simplicity*” (Robertson, 1956). **(ii)** The impact of phenotypic noise on the genotypic fitness and its impact on the **gradient of relative genotypic fitness** are distinct phenomena (Paenke et al. 2007; see Figure S1). Indeed, for Gaussian fitness functions, phenotypic noise can increase the genotypic fitness, but always decreases the gradient of relative genotypic fitness (Lande, 1976; Paenke et al., 2007).

Finally, even if phenotypic noise increases the genotypic fitness for a one-dimensional phenotype, it is not clear how this generalizes to the level of an entire organism, which possesses “*phenotypically integrated complex units*” (Forsman, 2015). Fisher (1930) has suggested that organisms may pay a cost to the “complexity” of their phenotype, whereby the fraction of beneficial mutations becomes increasingly small when the number of phenotypic characters under selection increases. The cost of complexity hypothesis seems robust (Orr, 2000; Martin and Lenormand, 2006), and little affected by organismal modularity (Welch and Waxman, 2003) (but see Wagner et al. 2008). This raises questions about the impact of phenotypic noise on organismal fitness when the number of phenotypic characters under selection increases: Will the fitness benefit of phenotypic noise

and its evolution be affected by a cost of complexity?

Here, we look at the impact of an evolvable phenotypic noise on genotypic fitness and on the gradient of relative genotypic fitness in the context of **(i)** single-dimensional phenotypes, and **(ii)** multi-dimensional phenotypes. We first show how phenotypic noise impacts the adaptive evolution of a single phenotypic character towards a new fitness optimum. Using a quantitative genetics approach and a generalized fitness function, we show that, depending on the shape of the fitness function, phenotypic noise can increase the genotypic fitness of an organism, or promote adaptive evolution of the mean phenotype, or both. We reveal the profound effect that the seemingly harmless addition of a minimal fitness to the fitness function can have on the evolutionary dynamics and on the evolutionary impact of phenotypic noise. We then extend the study to multiple phenotypic characters. We show that in an isotropic fitness landscape, an evolvable phenotypic noise is expected to align and correlate with the direction of the fitness optimum. Finally, using numerical simulations, we show that phenotypic noise can promote adaptive evolution of the mean phenotype of complex organisms and largely reduces the cost of complexity on the genotype when the phenotypic complexity is not too high.

Methods

Single phenotypic character under selection

We consider a large population of individuals under selection with discrete generations. We define an individual genotype by the pair $\{\mu, \sigma\}$, where $\mu \in \mathbb{R}$ is the mean phenotype of the genotype $\{\mu, \sigma\}$ (or breeding value) and $\sigma \in \mathbb{R}^+$ is the amplitude of the phenotypic noise. Both μ and σ are inheritable and evolvable. The phenotype $z \in \mathbb{R}$ of a single organism with genotype $\{\mu, \sigma\}$ is assumed to be drawn from a normal distribution with mean μ and variance σ^2 : $p(z|\mu, \sigma^2) \sim \mathcal{N}(\mu, \sigma^2)$, but any distribution satisfying the Lindeberg's condition can be used, as long as it has a mild effect on the phenotype (*i.e.* the variance is finite and not too large; Martin 2014). The absolute fitness only depends on

the phenotype z . The fitness function $w(z)$ is assumed positive, three times differentiable, and has one non-degenerate optimum at $z = 0$ (Martin, 2014). We extended the fitness function from Tenaillon (2014) by adding a minimal fitness (Zhang et al., 2009; Draghi, 2019),

$$w(z) = (1 - \beta)e^{-\alpha|z|^Q} + \beta, \quad (1)$$

where $\alpha > 0$ controls the sharpness of the fitness peak, $\beta \in [0, 1]$ is the rescaled minimal fitness, and $Q \geq 2$ controls the shape of the fitness function (Figure S2). When $\beta = 0$ and $Q = 2$, $w(z)$ is Gaussian-shaped. Note that a non-null β is sometimes used in numerical simulations (Zhang et al., 2009; Draghi, 2019).

The absolute fitness of the genotype $\{\mu, \sigma\}$ (or genotypic fitness) is (Lande, 1979):

$$W(\mu, \sigma) = \int_{-\infty}^{+\infty} p(z|\mu, \sigma^2)w(z)dz. \quad (2)$$

If the genotypic fitness $W(\mu, \sigma)$ increases when σ increases, phenotypic noise is expected to be positively selected. Conversely, if $W(\mu, \sigma)$ decreases when σ increases, phenotypic noise is expected to be selected against. Analytical approaches to compute the effect of phenotypic noise on the genotypic fitness are detailed in Appendix S1. Numerical approaches are detailed in Script S1.

As discussed by Paenke et al. (2007), in the absence of dominance or epistasis and if all the genetic variation is additive or if reproduction is asexual, the response to selection equals the selection differential, *i.e.* the difference of the base population mean and the mean after selection (Lande, 1979). Moreover, Paenke et al. (2007) have shown that if the effect of phenotypic noise on the genotypic fitness $W(\mu, \sigma)$ is monotonic, which holds when genetic variability is small, it is sufficient to study the impact of phenotypic noise on the gradient of relative genotypic fitness:

$$\frac{\partial \ln W(\mu, \sigma)}{\partial \mu}. \quad (3)$$

If $\frac{\partial \ln W(\mu, \sigma)}{\partial \mu}$ increases when σ increases, phenotypic noise magnifies the relative difference in fitness among genotypes and promotes adaptive evolution of the mean phenotype. Conversely, if $\frac{\partial \ln W(\mu, \sigma)}{\partial \mu}$ decreases when σ increases, phenotypic noise reduces the relative difference in fitness among genotypes and slows down adaptive evolution of the mean phenotype. Analytical approaches to compute the effect of phenotypic noise on the gradient of relative genotypic fitness are detailed in Appendix S1. Numerical approaches are detailed in Script S1.

Multiple phenotypic characters under selection

Fisher (1930) used the term “phenotypic complexity” to refer to the dimensionality n of the phenotypic space. Lande (1980) generalized quantitative equations for n phenotypic characters under selection. Here, we also included an evolvable multi-dimensional model of phenotypic noise.

In n dimensions, we define an individual genotype by the pair $\{\boldsymbol{\mu}, \boldsymbol{\Sigma}\}$, where $\boldsymbol{\mu} = (\mu_1, \dots, \mu_n)^T \in \mathbb{R}^n$ is the mean phenotype (or breeding value) of the organism (T is the matrix transpose), and the $n \times n$ matrix $\boldsymbol{\Sigma}$ is the covariance matrix of the phenotypic noise. We assume that both $\boldsymbol{\mu}$ and $\boldsymbol{\Sigma}$ are inheritable and evolvable. The continuous phenotype $\mathbf{z} = (z_1, \dots, z_n)^T \in \mathbb{R}^n$ follows a multivariate normal distribution centered at $\boldsymbol{\mu}$ with covariance $\boldsymbol{\Sigma}$: $p(\mathbf{z}|\boldsymbol{\mu}, \boldsymbol{\Sigma}) \sim \mathcal{N}_n(\boldsymbol{\mu}, \boldsymbol{\Sigma})$. We assume that the absolute fitness of an individual is determined by the Euclidean norm of its phenotype $\|\mathbf{z}\|$. Equation 1 generalizes to

$$w(\mathbf{z}) = (1 - \beta)e^{-\alpha\|\mathbf{z}\|^Q} + \beta. \quad (4)$$

The fitness function in Equation 4 is **isotropic**, *i.e.* the fitness only depends on the Euclidean distance between the phenotype and the optimum. The absolute fitness of a genotype $\{\boldsymbol{\mu}, \boldsymbol{\Sigma}\}$ (or genotypic fitness) is given by the multiple integral (Lande, 1980),

$$W(\boldsymbol{\mu}, \boldsymbol{\Sigma}) = \int_{\mathbb{R}^n} p(\mathbf{z}|\boldsymbol{\mu}, \boldsymbol{\Sigma})w(\mathbf{z})d\mathbf{z}. \quad (5)$$

The $n \times n$ covariance matrix Σ is assumed real, symmetric and positive-definite. As such, it admits the eigenvalue decomposition

$$\Sigma = \mathbf{U} \mathbf{D} \mathbf{U}^T, \quad (6)$$

with a diagonal matrix \mathbf{D} containing the n positive eigenvalues $\boldsymbol{\sigma}^2 = (\sigma_1^2, \dots, \sigma_n^2)^T$ of Σ . The matrix \mathbf{U} is a real orthonormal matrix that can be factorized as a product of rotations (\mathbf{U} can be chosen to avoid any reflections, see Anderson et al. 1987). Σ defines an hyper-ellipse in \mathbb{R}^n where the orientations of the semi-axes are given by the column vectors of \mathbf{U} , and the lengths of the semi-axes are given by the square roots of the eigenvalues (Fig. 1). This geometrical interpretation suggests a natural parametrization for the mutations; we express phenotypic noise mutations by **mutations in the lengths and in the orientations of the semi-axes of the hyper-ellipse**. Therefore, Σ is specified by a vector of n lengths $\boldsymbol{\sigma} = (\sigma_1, \dots, \sigma_n)^T$ and a vector of $n(n-1)/2$ rotation angles $\boldsymbol{\theta} = (\theta_1, \dots, \theta_{n(n-1)/2})^T$. The genotype of an organism can be rewritten $\{\boldsymbol{\mu}, \boldsymbol{\sigma}, \boldsymbol{\theta}\}$. The matrix \mathbf{U} is built by applying successive rotations,

$$\mathbf{U} = \prod_{i=1}^{n-1} \prod_{j=i+1}^n \mathbf{G}_{ij}(\theta_{n(i-1)+(i-1)(i-2)/2+j-i}) \quad (7)$$

with $\mathbf{G}_{ij}(\theta)$ the Givens matrix associated to the rotation between axes i and j , with an angle θ .

We assume that all coefficients of $\{\boldsymbol{\mu}, \boldsymbol{\sigma}, \boldsymbol{\theta}\}$ mutate independently. The vector of mutated mean phenotypes $\boldsymbol{\mu}'$ is drawn from a multivariate normal distribution $\boldsymbol{\mu}' \sim \mathcal{N}_n(\boldsymbol{\mu}, \mathbf{C}_\mu)$, the vector of mutated phenotypic noise amplitudes is drawn from a multivariate normal distribution $\boldsymbol{\sigma}' \sim \mathcal{N}_n(\boldsymbol{\sigma}, \mathbf{C}_\sigma)$, and the vector of mutated phenotypic noise orientations is drawn from a multivariate normal distribution $\boldsymbol{\theta}' \sim \mathcal{N}_{n(n-1)/2}(\boldsymbol{\theta}, \mathbf{C}_\theta)$. \mathbf{C}_μ , \mathbf{C}_σ and \mathbf{C}_θ are three constant covariance matrices of size $n \times n$ for \mathbf{C}_μ and \mathbf{C}_σ , and of size $n(n-1)/2 \times n(n-1)/2$ for \mathbf{C}_θ . In addition to the mutational variability, we assign mutation probabilities per generation m_μ , m_σ and m_θ . The mutational distributions have

finite mean and variance, satisfy the Lindeberg’s condition, and have a mild effect on the phenotype (*i.e.* the variance is not too large; Martin 2014).

In summary, our model includes three evolvable vectors per individual: $\boldsymbol{\mu}$, $\boldsymbol{\sigma}$ and $\boldsymbol{\theta}$. The mean phenotype of each organism is represented by a vector $\boldsymbol{\mu}$. The phenotypic noise of each organism is modeled by a multivariate normal law $\mathcal{N}_n(\boldsymbol{\mu}, \boldsymbol{\Sigma})$, $\boldsymbol{\Sigma}$ being decomposed in its semi-axes of lengths $\boldsymbol{\sigma}$, and rotation angles $\boldsymbol{\theta}$. The model also includes three constant mutational covariances \mathbf{C}_μ , \mathbf{C}_σ and \mathbf{C}_θ , three constant mutation rates m_μ , m_σ and m_θ (per individual per generation), and an isotropic fitness function $w(\mathbf{z})$ (Eq. 4). Table 1 summarizes all the variables.

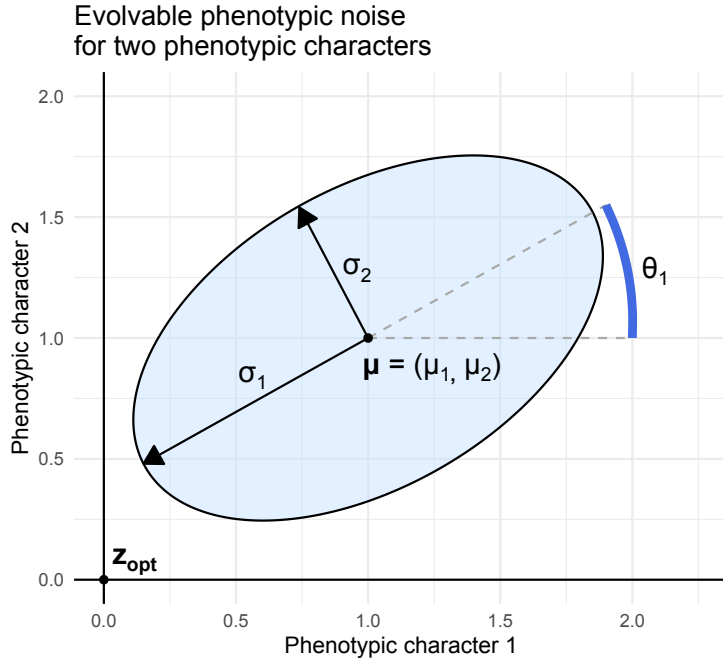


Figure 1: **Phenotypic noise parametrization for two phenotypic characters under selection.** For an organism with a mean phenotype $\boldsymbol{\mu} = (\mu_1, \mu_2)$ (black dot in (1, 1)), phenotypic noise is defined by a vector of semi-axis lengths $\boldsymbol{\sigma} = (\sigma_1, \sigma_2)$ (black arrows) and a vector of rotations $\boldsymbol{\theta} = (\theta_1)$ (for two phenotypic characters, a single rotation is needed, blue arc). The skyblue ellipse symbolizes the multivariate standard-deviation of the multivariate normal distribution of phenotypes for the genotype $\{\boldsymbol{\mu}, \boldsymbol{\sigma}, \boldsymbol{\theta}\}$. The fitness optimum $\mathbf{z}_{opt} = (0, 0)$ is represented by the black dot at origin.

Numerical simulations

We simulated the adaptive evolution of a population of individuals undergoing evolvable phenotypic noise under stabilizing selection. We considered a population of constant size L . At each discrete generation, individuals reproduce asexually with mutations. The number of descendants depends on the relative fitness and genetic drift. Each descendant inherits a mutated genotype $\{\boldsymbol{\mu}', \boldsymbol{\sigma}', \boldsymbol{\theta}'\}$ from its parents $\{\boldsymbol{\mu}, \boldsymbol{\sigma}, \boldsymbol{\theta}\}$, depending on the constant mutational covariances \mathbf{C}_μ , \mathbf{C}_σ and \mathbf{C}_θ , and the constant mutation rates m_μ , m_σ and m_θ . We made the additional assumption that mutation sizes were isotropic for $\boldsymbol{\mu}$, $\boldsymbol{\sigma}$ and $\boldsymbol{\theta}$. Mean traits $\mu_i, i \in \{1, \dots, n\}$ independently mutate through a normal distribution $\mathcal{N}(0, s_\mu^2)$. Each semi-axis size $\sigma_i, i \in \{1, \dots, n\}$ independently mutates through a normal distribution $\mathcal{N}(0, s_\sigma^2)$. Rotation angles $\theta_i, i \in \{1, \dots, n(n-1)/2\}$ independently mutate through a normal distribution $\mathcal{N}(0, s_\theta^2)$ (*i.e.* $\mathbf{C}_\mu = \mathbf{I}_n \times s_\mu^2$, $\mathbf{C}_\sigma = \mathbf{I}_n \times s_\sigma^2$ and $\mathbf{C}_\theta = \mathbf{I}_{n(n-1)/2} \times s_\theta^2$). We used three different measures to better characterize the evolution of the shape of phenotypic noise in multiple dimensions and to confirm our theoretical predictions (see Results); assuming $\sigma_1 = \max(\boldsymbol{\sigma})$, we measured:

- (i) The **phenotypic noise amplitude** σ_1 , *i.e.* the square root of the principal eigenvalue, which is the standard deviation of the phenotypic noise along the principal axis of $\boldsymbol{\Sigma}$.
- (ii) The **phenotypic noise flattening**,

$$\frac{\sigma_1^2}{\sum_{i \in n} \sigma_i^2}, \quad (8)$$

which is the fraction of the total variance along the principal axis. If the flattening ≈ 1 , all the variance is contained in the principal axis of the phenotypic noise (*i.e.* there is a dimensionality reduction of phenotypic noise towards a single dimension).

(iii) The **phenotypic noise alignment**,

$$\frac{|\mathbf{u}_1^T \boldsymbol{\mu}|}{\|\boldsymbol{\mu}\|}, \quad (9)$$

the dot product between the eigenvector associated to the largest eigenvalue, and the direction of the optimum. If the alignment ≈ 1 , the principal axis of the phenotypic noise is aligned towards the optimum.

For each numerical simulation, both the population's mean and the population's variance of these measures were computed through time. This model extends Fisher's geometric model (Fisher, 1930) by adding an evolvable phenotypic noise. The code of the simulation framework is available in Script S2. Table 1 summarizes all the variables.

Results

For a single phenotypic character, phenotypic noise promotes adaptive evolution of the mean phenotype on plateaus of positive fitness

Standard results (Pal, 1998) show that non-null phenotypic noise is beneficial to the genotypic fitness (Eq. 2) beyond the inflection points of the fitness function and deleterious inside. There is an optimal noise amplitude (achieved when $\frac{\partial W(\mu, \sigma)}{\partial \sigma} = 0$) due to the smoothing effect at larger noise levels (Fig. 2, *solid black lines*). A classic result with Gaussian fitness functions states that phenotypic noise always decreases the gradient of relative genotypic fitness (Lande, 1975). However, phenotypic noise can promote adaptive evolution of the mean phenotype in other kinds of fitness functions. We show in Appendix S1 that phenotypic noise promotes adaptive evolution of the mean phenotype when the logarithmic fitness function $f = \ln(w)$ satisfies a non-zero equality

$$\text{sign}(f''' + 2f'f'') = \text{sign}(f'), \quad (10)$$

Table 1: **List of mathematical variables.**

Variable notation	Type	Description
• Single phenotypic character under selection		
z	\mathbb{R}	Phenotype quantitative value
$w(z)$	$\mathbb{R} \rightarrow \mathbb{R}$	Fitness function (Eq. 1)
α	\mathbb{R}^+	Sharpness of the fitness peak
β	$[0, 1]$	Minimal fitness value
Q	≥ 2	Shape of the fitness function
z_{opt}	\mathbb{R}	Optimal phenotype
μ	\mathbb{R}	Mean phenotype (or breeding value)
σ	\mathbb{R}	Phenotypic noise standard deviation
$W(\mu, \sigma)$	$\mathbb{R} \times \mathbb{R} \rightarrow \mathbb{R}$	Genotypic fitness given μ and σ (Eq. 2)
$\partial W(\mu, \sigma)/\partial \mu$	$\mathbb{R} \times \mathbb{R} \rightarrow \mathbb{R}$	Genotypic fitness gradient given μ and σ
$\partial \ln W(\mu, \sigma)/\partial \mu$	$\mathbb{R} \times \mathbb{R} \rightarrow \mathbb{R}$	Relative genotypic fitness gradient given μ and σ
$\partial W(\mu, \sigma)/\partial \sigma$	$\mathbb{R} \times \mathbb{R} \rightarrow \mathbb{R}$	Genotypic fitness gradient around σ , given μ
$\partial^2 \ln W(\mu, \sigma)/\partial \mu \partial \sigma$	$\mathbb{R} \times \mathbb{R} \rightarrow \mathbb{R}$	Relative genotypic fitness gradient around σ , given μ
• Multiple phenotypic characters under selection		
n	\mathbb{N}^*	Dimensionality of the phenotypic space (“complexity”)
\mathbf{z}	\mathbb{R}^n	Phenotype quantitative value
$w(\mathbf{z})$	$\mathbb{R}^n \rightarrow \mathbb{R}$	Fitness function (Eq. 4)
d	$\mathbb{R}^n \times \mathbb{R}^n \rightarrow \mathbb{R}$	Euclidean distance to the optimal phenotype
\mathbf{z}_{opt}	\mathbb{R}^n	Optimal phenotype
$\boldsymbol{\mu}$	\mathbb{R}^n	Mean phenotype (or breeding value)
$\boldsymbol{\Sigma}$	$\mathbb{R}^{n \times n}$	Covariance matrix of the phenotypic noise
$W(\boldsymbol{\mu}, \boldsymbol{\Sigma})$	$\mathbb{R}^n \times \mathbb{R}^{n \times n} \rightarrow \mathbb{R}$	Genotypic fitness given the genotype $\{\boldsymbol{\mu}, \boldsymbol{\Sigma}\}$ (Eq. 5)
\mathbf{D}	$\mathbb{R}^{n \times n}$	Diagonal matrix of the eigenvalues of $\boldsymbol{\Sigma}$
\mathbf{U}	$\mathbb{R}^{n \times n}$	Real orthogonal matrix of the eigenvectors of $\boldsymbol{\Sigma}$
$\boldsymbol{\sigma}^2$	\mathbb{R}^n	Eigenvalues of $\boldsymbol{\Sigma}$
$\boldsymbol{\theta}$	$\mathbb{R}^{n(n-1)/2}$	Pairwise plane rotations to generate \mathbf{U}
\mathbf{C}_μ	$\mathbb{R}^{n \times n}$	Mutational covariance matrix of $\boldsymbol{\mu}$
\mathbf{C}_σ	$\mathbb{R}^{n \times n}$	Mutational covariance matrix of $\boldsymbol{\sigma}$
\mathbf{C}_θ	$\mathbb{R}^{n(n-1)/2 \times n(n-1)/2}$	Mutational covariance matrix of $\boldsymbol{\theta}$
$\mathbf{G}_{ij}(\theta)$	$\mathbb{R}^{n \times n}$	Givens matrix (rotation between axes i and j , with angle θ)
s_μ^2	\mathbb{R}^+	Mutational variance of $\boldsymbol{\mu}$ ($\mathbf{C}_\mu = s_\mu^2 \mathbf{I}_n$)
s_σ^2	\mathbb{R}^+	Mutational variance of $\boldsymbol{\Sigma}$ ($\mathbf{C}_\sigma = s_\sigma^2 \mathbf{I}_n$)
s_θ^2	\mathbb{R}^+	Mutational variance of $\boldsymbol{\theta}$ ($\mathbf{C}_\theta = s_\theta^2 \mathbf{I}_{n(n-1)/2}$)
\mathbf{I}_n	$\mathbb{R}^{n \times n}$	Identity matrix of size $n \times n$
m_μ	$[0, 1]$	Mutation rate of $\boldsymbol{\mu}$
m_σ	$[0, 1]$	Mutation rate of $\boldsymbol{\Sigma}$
m_θ	$[0, 1]$	Mutation rate of $\boldsymbol{\theta}$
L	\mathbb{N}^*	Population size

This condition depends on the third derivative of the logarithmic fitness, f''' . For the Gaussian fitness, we have $f = -\alpha\mu^2$, $\alpha > 0$, so Condition (10) can never be met, since $f'' < 0$ and $f''' = 0$ everywhere. However, around the fitness optimum, f' is close to zero, and the condition reduces to $\text{sign}(f''') = \text{sign}(f')$. This means that arbitrarily small perturbations of the Gaussian fitness can provoke the condition to be met. We show in Appendix S1 that Condition (10) is met when the population is located on a plateau of

positive fitness. Here, a plateau is an interval in the phenotypic space where the fitness function is relatively flat, and bordered by regions of higher curvature. When a population is located in such a region of the fitness landscape, phenotypic noise increases the selection gradient by magnifying the relative genotypic fitness differences present at the borders of the plateau, hence favoring the fixation of beneficial mutations (see Appendix S1). In Equation 1, the formation of plateaus of positive fitness depends on the minimal fitness β and the shape parameter Q . Indeed, if the fitness function is based on Equation 1, the logarithmic fitness plateaus only:

- (i) far from the optimum when $\beta > 0$,
- (ii) around the optimum when $Q > 2$.

The exact threshold values of the mean phenotype μ below or beyond which phenotypic noise promotes adaptive evolution of the mean phenotype on fitness plateaus are provided in Table 2 and Appendix S1.

Table 2: Threshold values of the mean phenotype μ beyond or below which phenotypic noise increases the genotypic fitness or promotes adaptive evolution of the mean phenotype, depending on the shape of the fitness landscape.

Shape of the fitness function	Gaussian-shaped ($\beta = 0, Q = 2$)	Rescaled minimum ($\beta > 0, Q = 2$)	Higher curvature ($\beta = 0, Q > 2$)	Combined effects ($\beta > 0, Q > 2$)
Phenotypic noise increases the genotypic fitness when:	$ \mu ^Q > \frac{Q-1}{\alpha Q}$ (inflection points of the fitness function)			
Phenotypic noise promotes adaptive evolution when:	Never	$ \mu ^2 > \frac{2w(\mu) + \beta}{2\alpha\beta}$	$ \mu ^Q < \frac{Q-2}{2\alpha Q}$	$ \mu \in]0, \mu_1[\cup]\mu_2, +\infty[$, μ_1 and μ_2 defined in Appendix S1

In summary, during periods of adaptation to new environments, phenotypic noise is expected to be positively selected far from the fitness optimum because it increases the genotypic fitness. It will also promote adaptive evolution of the mean phenotype if the logarithmic fitness plateaus far from the optimum (*i.e.* if $\beta > 0$). This should be followed by a reduction in phenotypic noise when the population reaches the optimum, because phenotypic noise decreases the genotypic fitness, even when it promotes adaptive evolution of the mean phenotype. Thus, while phenotypic noise has the potential to

indirectly speed up the fixation of beneficial mutations far and/or close to the fitness optimum depending on the shape of the fitness landscape, its actual role will depend on how direct selection impacts phenotypic noise based on its effect on the genotypic fitness. This raises the question of the indirect selection of phenotypic noise for its specific impact on the gradient of relative genotypic fitness (see Discussion).

To illustrate this result, we took as a reference the parameters used by Zhang et al. (2009) ($\alpha = 3.125$, $\beta = 0.1$ and $Q = 2$). We then selected four configurations of fitness functions, by varying the minimal fitness β and the shape parameter Q (α plays no role here).

- (1) Gaussian-shaped fitness function ($\alpha = 3.125$, $\beta = 0$ and $Q = 2$) (Fig. 2A),
- (2) Rescaled minimum fitness function ($\alpha = 3.125$, $\beta = 0.1$ and $Q = 2$) (Fig. 2B),
- (3) Increased curvature fitness function ($\alpha = 3.125$, $\beta = 0$ and $Q = 4$) (Fig. 2C),
- (4) “Combined effects” fitness function ($\alpha = 3.125$, $\beta = 0.1$ and $Q = 4$) (Fig. 2D).

For simplicity, we only explored positive values of the mean phenotype μ , as the result is symmetrical around $z_{opt} = 0$. In all configurations, the phenotypic noise increases the genotypic fitness $W(\mu, \sigma)$ in convex regions of the fitness function, beyond the inflection point (Fig. 2 *black dots*). The optimal σ value maximizing $W(\mu, \sigma)$ increases as the distance between the mean phenotype μ and the optimum increases (Fig. 2 *solid black lines*). As expected, for a Gaussian fitness function (Fig. 2A), the phenotypic noise always decreases the gradient of relative genotypic fitness, *i.e.* it slows down adaptive evolution of the mean phenotype (Lande, 1975). When the minimal fitness $\beta > 0$ (*i.e.* the logarithmic fitness plateaus at its minimum $\ln(\beta)$, Fig. 2B *black circle*), phenotypic noise promotes adaptive evolution of the mean phenotype but only far from the optimum. This mechanism is independent from the curvature of the fitness landscape, and does not depend on the inflection point (Fig. 2B *black dot*; Appendix S1). The optimal σ value maximizing the gradient of relative genotypic fitness increases as the distance between

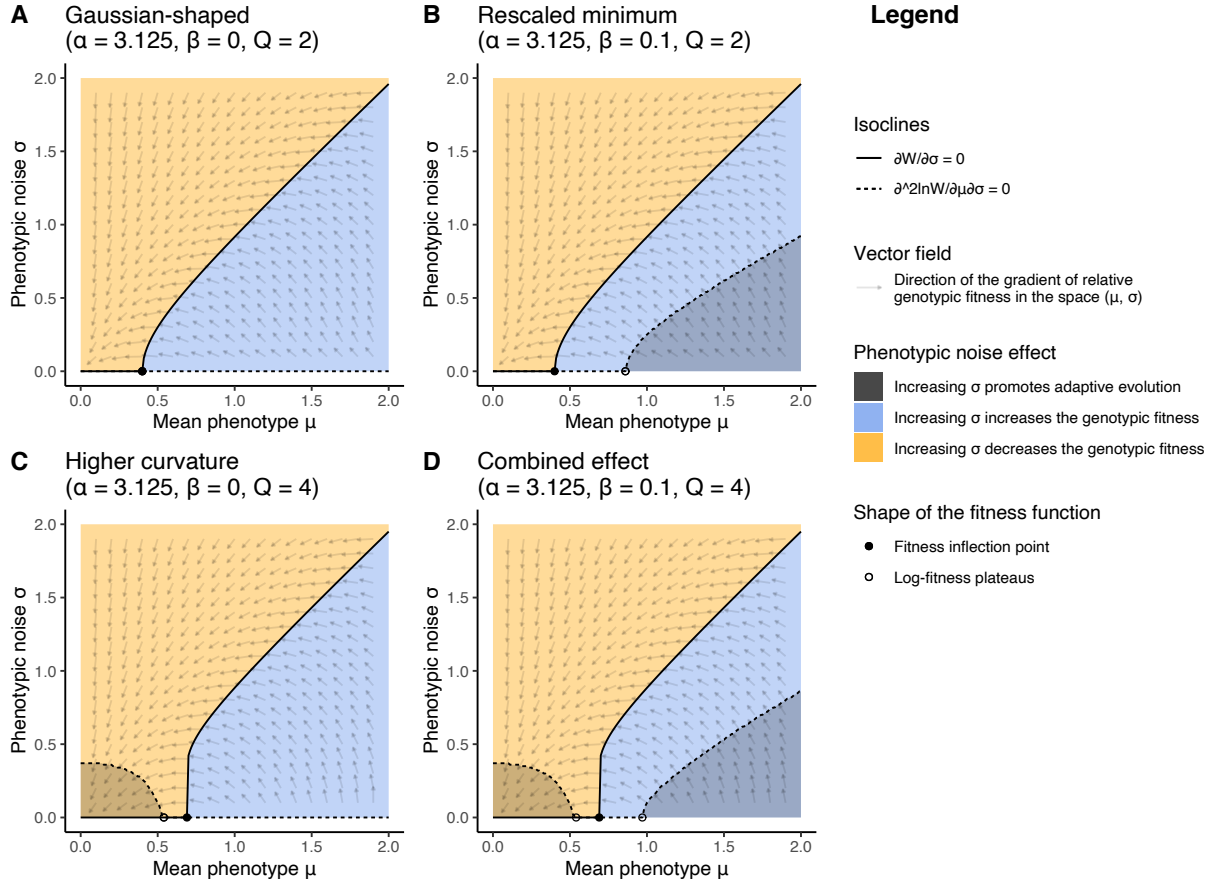


Figure 2: **Impact of phenotypic noise on the genotypic fitness and the gradient of relative genotypic fitness, depending on the shape of the fitness function.** **A.** Gaussian-shaped fitness landscape ($\alpha = 3.125$, $\beta = 0$ and $Q = 2$). **B.** Rescaled minimum fitness landscape ($\alpha = 3.125$, $\beta = 0.1$ and $Q = 2$). **C.** Higher curvature fitness landscape ($\alpha = 3.125$, $\beta = 0$ and $Q = 4$). **D.** Combined effects fitness landscape ($\alpha = 3.125$, $\beta = 0.1$ and $Q = 4$). The blue and orange areas represent the regions where increasing σ respectively increases or decreases the genotypic fitness $W(\mu, \sigma)$. The grey area represents the region where increasing σ increases the gradient of relative genotypic fitness $\frac{\partial \ln W(\mu, \sigma)}{\partial \mu}$, hence promoting adaptive evolution of the mean phenotype. The isocline $\frac{\partial \ln W(\mu, \sigma)}{\partial \sigma} = 0$ for which σ maximizes $W(\mu, \sigma)$ is represented by a solid black line. The isocline $\frac{\partial^2 \ln W(\mu, \sigma)}{\partial \mu \partial \sigma} = 0$ for which σ maximizes $\frac{\partial \ln W(\mu, \sigma)}{\partial \mu}$ is represented by a dashed black line. Fitness function inflection point is represented by a black dot. The distance below or beyond which the fitness function plateaus (including their borders) is represented by black circles. The direction of the gradient of relative genotypic fitness is represented by a vector field in the space (μ, σ) . Figure S3 illustrates some phenotypic distributions corresponding to specific genotypes $\{\mu, \sigma\}$.

μ and the optimum increases (Fig. 2B *dashed black line*). When the shape parameter Q increases, a logarithmic fitness plateau appears around the optimum (Fig. 2C *black circle*), and phenotypic noise promotes adaptive evolution of the mean phenotype. The

σ value maximizing the gradient of relative genotypic fitness decreases quickly as the distance between μ and the optimum increases (Fig. 2C *dashed black line*). Therefore phenotypic noise can promote adaptive evolution of the mean phenotype both close and far from the optimum (Fig. 2D *dashed black line*).

The impact of phenotypic noise on the genotypic fitness and the gradient of relative genotypic fitness is summarized in Table 3. During an adaptation event, according to the vector field

$$\left(\frac{\partial \ln W(\mu, \sigma)}{\partial \mu}, \frac{\partial \ln W(\mu, \sigma)}{\partial \sigma} \right),$$

an evolvable σ is expected to increase far from the optimum, and then to decrease to zero as the population reaches the fitness optimum (Fig. 2 *vector field*).

Table 3: **Impact of phenotypic noise on the genotypic fitness and the gradient of relative genotypic fitness, depending on the shape of the fitness function.** Orange, blue and dark-grey background colors correspond to the color code used in figure 2.

	Close to the fitness optimum		Far from the fitness optimum	
Fitness function parameters	$Q = 2$	$Q > 2$	$\beta = 0$	$\beta > 0$
Shape of the absolute fitness function	concave (curvature < 0)	concave (curvature < 0)	convex (curvature > 0)	convex (curvature > 0)
Shape of the log-fitness function	Equation 10 not satisfied	plateau/border (Eq. 10 satisfied)	Equation 10 not satisfied	plateau/border (Eq. 10 satisfied)
Does noise increase genotypic fitness?	No	No	Yes	Yes
Does noise increase the gradient of relative genotypic fitness?	No	Yes	No	Yes

For each fitness function, we also used numerical simulations to compute evolutionary trajectories (Methods, Script S2), in order to estimate the convergence time towards the fitness optimum. The mean phenotype mutation size was $s_\mu = 0.1$, and its mutation rate was $m_\mu = 10^{-3}$ (~ 1 mutation per generation per population). For a single phenotypic character, there is no possible rotation of the single phenotypic noise component, thus $\theta = \emptyset$ (Methods). We ran simulations with a population size $L = 1,000$ for the four

fitness configurations when there is:

- (1) no phenotypic noise ($\sigma = 0$),
- (2) an evolvable phenotypic noise with a mutation size $s_\sigma = 0.1$ and a mutation rate $m_\sigma = 10^{-3}$ (~ 1 mutation per generation per population).

We assumed that a population had reached the fitness optimum when the mean phenotype in the population was at a distance 0.1 from the optimum (one quarter of the fitness standard deviation). We ran 200 repetitions for each of the 8 parameter sets (1,600 simulations in all). We initialized all the individuals with the genotype $\{\mu = 2, \sigma = 0\}$. When phenotypic noise promotes adaptive evolution of the mean phenotype far from the optimum (*i.e.* when the logarithmic fitness plateaus; $\beta > 0$), populations with an evolvable noise converge faster to the optimum (Fig. 3B-D). When phenotypic noise does not promote adaptive evolution of the mean phenotype far from the optimum (*i.e.* when $\beta = 0$, *e.g.* for a Gaussian-shaped fitness function), populations without phenotypic noise converge faster (Figs. 3A-C). In all the cases where phenotypic noise is evolvable, genotypes $\{\mu, \sigma\}$ tend to follow the gradient of relative genotypic fitness in the space (μ, σ) to maximize the genotypic fitness (Figure S4). Doing so, the population may go through regions of the space (μ, σ) where the phenotypic noise promotes adaptive evolution of the mean phenotype, indirectly reducing the convergence time depending on the shape of the fitness function.

For multiple phenotypic characters, the best phenotypic noise configuration is aligned and fully correlated with the direction of the fitness optimum

When organisms have several phenotypic characters under selection, the fraction of beneficial mutations decreases quickly with the number n of characters, a property known as the “cost of complexity” (Fisher, 1930; Orr, 2005). This effect is maximized under the

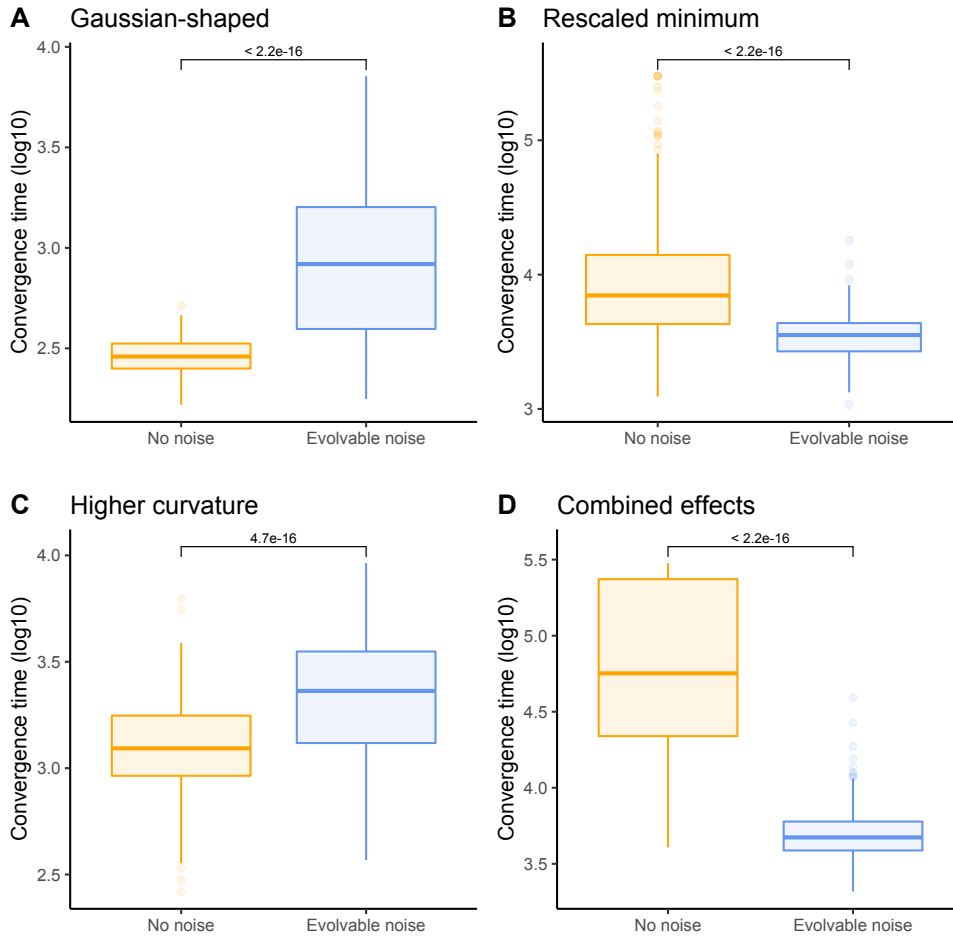


Figure 3: **Population convergence time to the fitness optimum depending on the shape of the fitness function and the evolvability of phenotypic noise.** **A.** Gaussian-shaped fitness landscape ($\alpha = 3.125$, $\beta = 0$ and $Q = 2$). **B.** Rescaled minimum fitness landscape ($\alpha = 3.125$, $\beta = 0.1$ and $Q = 2$). **C.** Higher curvature fitness landscape ($\alpha = 3.125$, $\beta = 0$ and $Q = 4$). **D.** Combined effects fitness landscape ($\alpha = 3.125$, $\beta = 0.1$ and $Q = 4$). The population with no phenotypic noise ($\sigma = 0$) is represented by an orange boxplot. The population with evolvable phenotypic noise is represented by a blue boxplot. Wilcoxon test p-values are provided.

“universal pleiotropy assumption” (Martin, 2014), where mutations on the mean phenotype are isotropic, such that mutations have no preferential direction and can affect all characters similarly. When genetic correlations between phenotypic characters exist and are evolvable, the universal pleiotropy does not hold anymore (see *e.g.* Schluter 1996; Sato and Kaneko 2019), reducing the cost of complexity. Here, we keep the universal pleiotropy assumption as a worst-case scenario, in order to properly characterize the role of an evolvable phenotypic noise in complex phenotypes.

We show in Appendix S1 that when the population is far from the fitness optimum (beyond the inflection points of the fitness landscape), the best phenotypic noise configuration (*i.e.* the one that maximizes the genotypic fitness) is reached when phenotypic noise is fully correlated and aligned with the direction of the fitness optimum. In this configuration, the phenotypic noise is reduced to a single dimension, with an optimal value in the direction of the fitness optimum and no noise in all other directions. Any other form of phenotypic noise yields a lower genotypic fitness $W(\boldsymbol{\mu}, \boldsymbol{\Sigma})$ (Eq. 5). Thus, the best phenotypic noise configuration for n phenotypic characters far from the fitness optimum consists in a dimensionality reduction to fight the cost of complexity on phenotypic noise. A population evolving such a noise configuration will recover the benefit of a single character scenario, with phenotypic noise conferring a strong fitness advantage to organisms. However, the effect of phenotypic noise on the gradient of relative genotypic fitness will still depend on the shape of the fitness landscape, at least in the sub-space where phenotypic noise generates random phenotypes. Inside the inflection points of the fitness landscape, the best configuration is a null phenotypic noise.

An example of such an evolvable phenotypic noise is shown in Figure 4. In this numerical simulation (see Methods, Script S2), a population of individuals with two phenotypic characters evolve towards the fitness optimum. As shown on Figure 4A, phenotypic noise shape evolves through generations and eventually reaches the optimal configuration, fully flattened and aligned with the fitness optimum located in $(0, 0)$. As the mean phenotype in the population converges (Fig. 4B), the phenotypic noise amplitude increases temporarily (Fig. 4C). Phenotypic noise is also temporarily reduced to a single dimension, as shown by the flattening of the phenotypic noise (Fig. 4D). At the same time, phenotypic noise temporarily fully aligns with the direction of the fitness optimum (Fig. 4E). When the population reaches the fitness optimum, phenotypic noise becomes deleterious and is selected against, leading to the loss of both phenotypic noise flattening and alignment (Figs. 4D-E).

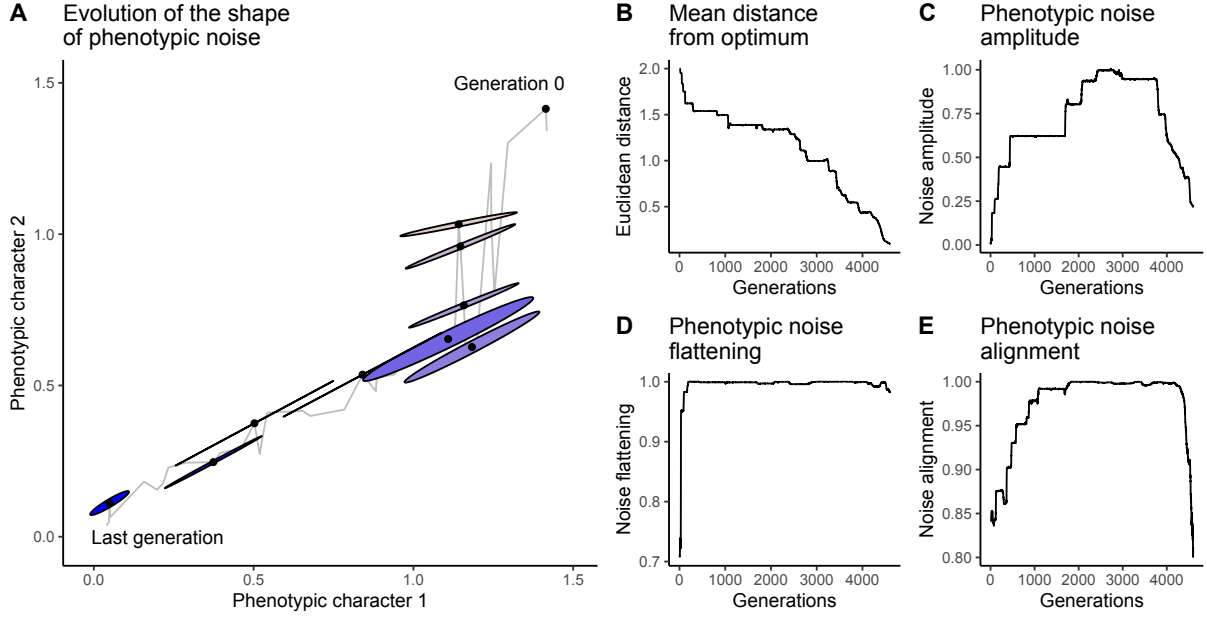


Figure 4: **Simulation for two phenotypic characters under selection.** In this simulation, a population of organisms with two phenotypic characters under selection evolves towards a fitness optimum $\mathbf{z}_{opt} = (0, 0)$. The population size is $L = 1,000$. Initial conditions are $\|\boldsymbol{\mu}\| = 2$ ($\mu_1 = \mu_2 = \sqrt{2}$), $\boldsymbol{\sigma} = (0, 0)$ and $\boldsymbol{\theta} = (0)$. Mutation sizes are $s_\mu = s_\sigma = s_\theta = 0.1$, mutation rates are $m_\mu = m_\sigma = m_\theta = 10^{-3}$. The fitness function $w(\mathbf{z})$ is Gaussian-shaped ($\alpha = 3.125, \beta = 0, Q = 2$). **A.** Evolution of the phenotypic noise shape. Each ellipse represents noise amplitudes σ_1 and σ_2 (rescaled by a factor 0.3 for readability) and the orientation of the noise (given by $\boldsymbol{\theta}$). The mean phenotype $\boldsymbol{\mu}$ is represented by the central black dot. Generation time is represented by the color gradient, from beige to blue. The phenotypic noise shape of the best individual is plotted every 500 generations. The trajectory of the best individual of each generation is represented by a grey line. **B.** Distance of the population’s mean phenotype from the fitness optimum ($d = \|\boldsymbol{\mu}\|$). **C.** Evolution of the population’s mean phenotypic noise amplitude ($\max(\boldsymbol{\sigma})$). **D.** Evolution of the population’s mean phenotypic noise flattening. **E.** Evolution of the population’s mean phenotypic noise alignment with the direction of the fitness optimum.

Phenotypic noise reduces the cost of complexity on the mean phenotype.

Evolving an optimized phenotypic noise, fully correlated and aligned with the direction of the fitness optimum, is complex and requires the fixation of many mutations. As the cost of complexity impedes the production and the fixation of beneficial mutations for the mean phenotype, one could expect that this cost of complexity will also impede the probability of fixing mutations shaping phenotypic noise in the right configuration.

This probability depends at least on the phenotypic complexity n , the distance from the fitness optimum, the effective population size N_e , and the genetic variability of $\boldsymbol{\mu}$, $\boldsymbol{\sigma}$ and $\boldsymbol{\theta}$. When $\beta > 0$, if phenotypic noise evolves towards a single dimension aligned with the direction of the fitness optimum, it will increase the probability to fix beneficial mutations. This could counteract the cost of complexity on the mean phenotype and promote its adaptive evolution.

To address the issue of the cost of complexity in the evolution of phenotypic noise, we simulated the adaptive evolution of initially maladapted populations towards the fitness optimum for a range of phenotypic complexities. We measured the convergence time to the fitness optimum in two fitness function configurations,

- (1) Gaussian-shaped fitness function ($\alpha = 3.125$, $\beta = 0$ and $Q = 2$),
- (2) Rescaled minimum fitness function ($\alpha = 3.125$, $\beta = 0.1$ and $Q = 2$).

We then varied the mutation rate ratio between the mean phenotype $\boldsymbol{\mu}$ and the phenotypic noise parameters $\boldsymbol{\sigma}$ and $\boldsymbol{\theta}$ (see Methods). We applied four scenarios:

- (1) Organisms have **no phenotypic noise**. Phenotypic noise mutation rates are $m_\sigma = m_\theta = 0$. Phenotypic noise parameters are $\boldsymbol{\sigma} = \mathbf{0}$, $\boldsymbol{\theta} = \mathbf{0}$. Mean phenotype mutation rate is $m_\mu = 10^{-3}$,
- (2) The phenotypic noise mutates **more slowly** than the mean phenotype. Phenotypic noise mutation rates are $m_\sigma = m_\theta = 10^{-4}$. Mean phenotype mutation rate is $m_\mu = 10^{-3}$,
- (3) The phenotypic noise and the mean phenotype mutate at the **same rate**. Mutation rates are $m_\mu = m_\sigma = m_\theta = 10^{-3}$,
- (4) The phenotypic noise mutates **more often** than the mean phenotype. Phenotypic noise mutation rates are $m_\sigma = m_\theta = 10^{-2}$. Mean phenotype mutation rate is $m_\mu = 10^{-3}$.

Table 4: List of parameters used in the simulation framework for multiple phenotypic characters.

Fitness function	Gaussian-shaped ($\alpha = 3.125, \beta = 0, Q = 2$)				Rescaled minimum ($\alpha = 3.125, \beta = 0.1, Q = 2$)			
	Null	Lower ($0.1 \times m_\mu$)	Equal	Higher ($10 \times m_\mu$)	Null	Lower ($0.1 \times m_\mu$)	Equal	Higher ($10 \times m_\mu$)
Phenotypic noise mutation rate (compared to μ)	Null	Lower ($0.1 \times m_\mu$)	Equal	Higher ($10 \times m_\mu$)	Null	Lower ($0.1 \times m_\mu$)	Equal	Higher ($10 \times m_\mu$)
Mean phenotype μ mutation rate	$m_\mu = 10^{-3}$							
Phenotypic complexity	From $n = 1$ to $n = 10$							
Mutation size	$s_\mu = s_\sigma = s_\theta = 0.1/\sqrt{n}$							
Initial phenotypic noise	$\sigma \approx 0, \theta = 0$							
Initial distance from optimum	$\ \mu\ = 2.0$							
Distance from optimum to reach	$\ \mu\ = \sqrt{0.5/\alpha} = 0.4$							
Population size	$L = 1,000$							

We computed simulations for a phenotypic complexity ranging from $n = 1$ to $n = 10$, with 100 repetitions per parameter set (8,000 simulations in all). To limit computation time, we considered the population to have converged towards the fitness optimum when the mean phenotype in the population reached within one standard-deviation of the fitness optimum, *i.e.* $\sqrt{\frac{0.5}{\alpha}} = 0.4$. We initialized all the populations with a null phenotypic noise ($\sigma \sim \mathbf{0}$), and with the rotations of the covariance matrix set to $\theta = \mathbf{0}$. The initial Euclidean distance was $\|\mu\| = 2.0$ (beyond the fitness landscape inflection point). Mutation sizes of phenotypic noise parameters and the mean phenotype were $s_\mu = s_\sigma = s_\theta = \frac{0.1}{\sqrt{n}}$ (the term \sqrt{n} is used to keep a constant mutational size distribution whatever the phenotypic complexity). Simulation parameters are summarized in Table 4.

Figure 5 represents the convergence time of simulations, in number of generations (no phenotypic noise simulations: *brown curves*; lower mutation rate phenotypic noise simulations: *beige curves*; equal mutation rate phenotypic noise simulations: *water green curves*; higher mutation rate phenotypic noise simulations: *green curves*). While phenotypic noise systematically slows down adaptive evolution of the mean phenotype for a Gaussian-shaped fitness function (Fig. 5A), phenotypic noise significantly speeds up adap-

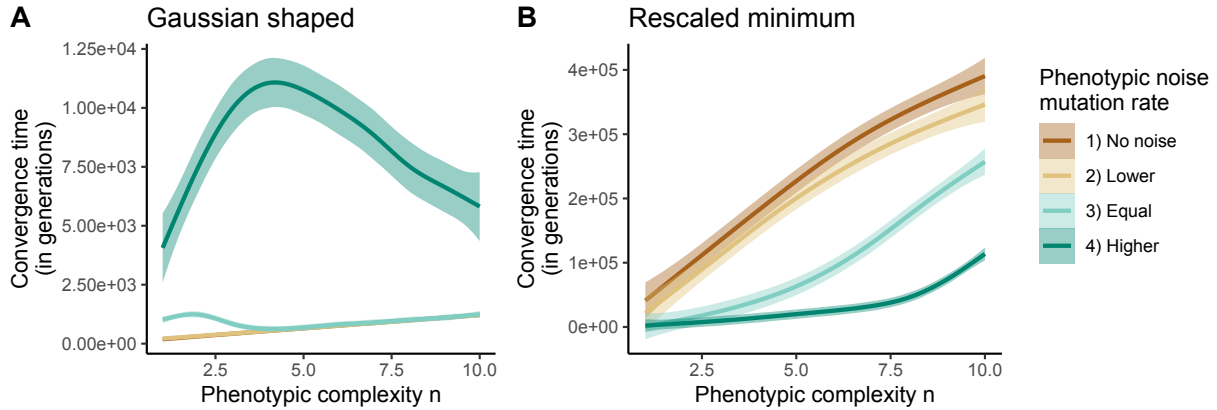


Figure 5: **Convergence time of simulations in number of generations.** **A.** Simulations with the Gaussian-shaped fitness function ($\alpha = 3.125$, $\beta = 0$, $Q = 2$) **B.** Simulations with the rescaled minimum fitness function ($\alpha = 3.125$, $\beta = 0.1$, $Q = 2$). The `lowess` smooth function from `R` is used to compute the mean and the standard error of the convergence time for each phenotypic complexity, with a span of 0.75. Brown line and standard error: populations with null phenotypic noise. Beige line and standard error: phenotypic noise mutation rate is lower than mean phenotype mutation rate. Water green line and standard error: phenotypic noise mutation rate is equal to the mean phenotype mutation rate. Green line and standard error: phenotypic noise mutation rate is higher than mean phenotype mutation rate. Due to computational limitations, the maximum number of generations was kept at 500,000.

tive evolution of the mean phenotype for the rescaled minimum fitness function (Fig. 5B). The loss or gain of generation time depends on the mutation rate of phenotypic noise, the impact being stronger with a higher phenotypic noise mutation rate. **(i)** For the Gaussian-shaped fitness function (Fig. 5A), the convergence time of populations with the highest phenotypic noise mutation rate (Fig. 5A *green curve*) increases by more than 20 fold when $n \approx 3$, although the difference with null phenotypic noise populations (Fig. 5A *brown curve*) fades away when the phenotypic complexity increases. The difference with null phenotypic noise populations is less significant for populations with a phenotypic noise mutation rate lower or equal to the mean phenotype mutation rate (Fig. 5A *beige and water green curves*). Around $n \approx 4$, there is no more differences in convergence time between these populations. **(ii)** For the rescaled minimum fitness function (Fig. 5B), a very different trend is observed. The higher the phenotypic noise mutation rate is, the faster populations converge towards the fitness optimum. For populations with the highest phenotypic noise mutation rate (Fig. 5B *green curve*), there is a 10-fold decrease

in convergence time compared to populations without phenotypic noise (Fig. 5B *brown curve*), indicating an important compensation of the cost of complexity. However, this gain is progressively lost when phenotypic complexity increases further.

To better characterize the evolution of phenotypic noise, we extracted for each simulation the maximal mean value reached in the population for the three indicators presented in Methods (phenotypic noise amplitude, flattening and alignment with the fitness optimum; Fig. 6). For the Gaussian-shaped fitness function (Figs. 6A-B-C), phenotypic noise gets closer to the optimal configuration when the mutation rate is higher, as shown by stronger phenotypic noise flattening and alignment (*i.e.* closer to 1). The optimality of the phenotypic noise configuration decreases with the phenotypic complexity: Indeed, as it is harder to evolve the right noise configuration when n increases, the mean phenotype of populations converges towards the fitness optimum before phenotypic noise is able to reach the best noise configuration. Nonetheless, for the populations with the highest phenotypic noise mutation rate (*green curves*), there is enough time for phenotypic noise to reach the optimal configuration if the phenotypic complexity is low ($n < 4$). In this case, phenotypic noise strongly reduces the gradient of relative genotypic fitness, increasing the convergence time (Fig. 5A).

For the rescaled minimum fitness function (Figs. 6D-E-F), as the selection gradient is very low far from the optimum, phenotypic noise has enough time to evolve towards the optimal configuration, even for elevated phenotypic complexity. For populations with the highest phenotypic noise mutation rate (*green curves*), phenotypic noise always reaches the optimal configuration (noise flattening and alignment are close to 1). These populations are by far the fastest to converge towards the fitness optimum (Fig. 5B), with a convergence time reduced by 90% compared to populations with no phenotypic noise. However, the cost of complexity increases on phenotypic noise evolution for high phenotypic complexity ($n > 7$). The lower the phenotypic noise mutation rate, the stronger the cost of complexity, as shown by weakened noise flattening and alignment when n increases. One can also notice that for high phenotypic complexity ($n > 7$), the

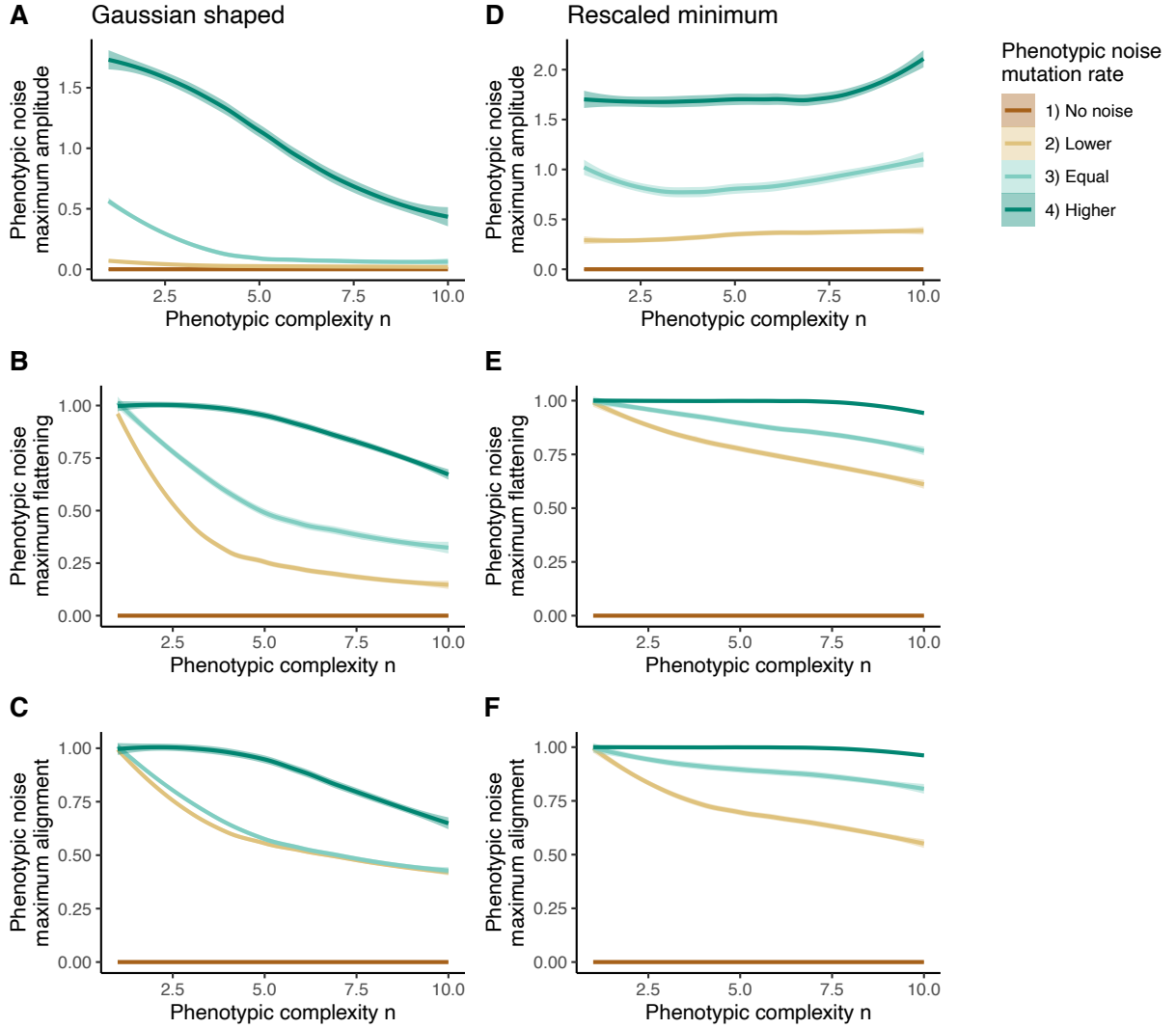


Figure 6: **Mean optimal phenotypic noise configuration reached in the population for each scenario and each phenotypic complexity.** Three measures of the shape of the phenotypic noise are shown: the maximal phenotypic noise amplitude $\max(\sigma)$, the maximal phenotypic noise alignment (Eq. 8), and the maximal phenotypic noise flattening (Eq. 9), reached during simulations in both the Gaussian-shaped scenario ($\alpha = 3.125$, $\beta = 0$, $Q = 2$) and the rescaled minimum scenario ($\alpha = 3.125$, $\beta = 0.1$, $Q = 2$). **A.** Maximal phenotypic noise amplitude reached in Gaussian-shaped scenarios. **B.** Maximal phenotypic noise flattening reached in Gaussian-shaped scenarios. **C.** Maximal phenotypic noise alignment reached in Gaussian-shaped scenarios. **D.** Maximal phenotypic noise amplitude reached in rescaled minimum scenarios. **E.** Maximal phenotypic noise flattening reached in rescaled minimum scenarios. **F.** Maximal phenotypic noise alignment reached in rescaled minimum scenarios. Simulations are run for a phenotypic complexity ranging from $n = 1$ to $n = 10$. The `lowess` smooth function from R is used to compute the mean and the standard error of each measure for each phenotypic complexity, with a span of 0.75. Brown lines and standard errors: populations with null phenotypic noise. Beige lines and standard errors: phenotypic noise mutation rate is lower than mean phenotype mutation rate. Water green lines and standard errors: phenotypic noise mutation rate is equal to the mean phenotype mutation rate. Green lines and standard errors: phenotypic noise mutation rate is higher than mean phenotype mutation rate.

phenotypic noise maximal amplitude increases. This can be explained by the time spent drifting away from the fitness optimum on the log-fitness plateau.

To summarize, phenotypic noise reduces the cost of complexity on the mean phenotype and promotes adaptive evolution of the mean phenotype as long as it does not suffer too much from the cost of complexity itself, and can reach the optimal configuration, aligned and fully correlated with the direction of the fitness optimum. According to our results, under the universal pleiotropy assumption, this is the case for an intermediate phenotypic complexity (n ranging from 1 to 7). For higher complexities, phenotypic noise suffers a significant cost, but still confers a strong advantage on the convergence time of populations.

Discussion

While phenotypic noise has long been assumed to be harmful for the fitness, its benefit during an adaptation event was foreseen by Lande (1980), and since then studied, or even re-discovered, by many authors (Pal, 1998; Kawecki, 2000; Paenke et al., 2007; Zhang et al., 2009; Bruijning et al., 2019). Eldar and Elowitz (2010) suggested a verbal model where “*one might expect increased phenotypic noise during periods of adaptation to new environments, followed by reduction in noise when selection becomes stabilizing*”. However, until recently (Bódi et al., 2017; Duveau et al., 2018), the lack of experimental results to support the theory led to an apparent paradox about the impact of phenotypic noise on organismal fitness during adaptation events. Indeed, it is assumed that phenotypic noise promotes adaptive evolution of the mean phenotype because it increases the genotypic fitness (Zhang et al., 2009). However, as a Gaussian-shaped fitness function has been historically used, it is generally held that phenotypic noise only hinders the selection gradient (Lande, 1975). As suggested by Paenke et al. (2007), even if phenotypic noise increases the genotypic fitness far from the fitness optimum, it does not necessarily increase the gradient of relative genotypic fitness, and hence the selection gradient. This

actually depends on the shape of the fitness function.

Here, using a quantitative genetics framework, we show that phenotypic noise promotes adaptive evolution of the mean phenotype on plateaus of positive fitness (*i.e.* on log-fitness plateaus), where the fitness function is relatively flat, and bordered by regions of higher curvature. In such a region of the fitness landscape, phenotypic noise increases the gradient of selection by magnifying the relative genotypic fitness differences present at the borders of the plateau, hence favoring the fixation of beneficial mutations. This mechanism is independent from the known effect of phenotypic noise on increasing the genotypic fitness and smoothing the absolute fitness landscape (Pál and Miklós, 1999; Saito et al., 2013).

With our generalized unimodal fitness function (Eq. 1), this can lead to all sorts of scenarios depending on the shape of the fitness landscape (Table 2): **(i)** Far from the fitness optimum, phenotypic noise is always positively selected, and indirectly promotes adaptive evolution of the mean phenotype if the logarithmic fitness plateaus at a minimum of positive fitness ($\beta > 0$). One could object that such a fitness landscape is unrealistic, as there is no reason to not consider a null fitness very far from the optimum. However, in more complex fitness landscapes having multiple fitness optima, the existence of local plateaus or saddles, surrounded by valleys and peaks of fitness is likely. Regions of neutral evolution are proven phenomena in the evolution of DNA or protein sequences (reviewed by Payne and Wagner 2019). Phenotypic noise could then favor the fixation of rare beneficial mutations and phenotypic innovations, hence increasing evolvability (see *e.g.* Espinosa-Soto et al. 2011). **(ii)** Near the optimum, phenotypic noise is always selected against, while it has the potential to promote adaptive evolution of the mean phenotype when the logarithmic fitness plateaus at its maximum ($Q > 2$). Of course, the question is whether these results stand for more generic fitness functions. The Gaussian fitness function is considered generic because a second-order polynomial approximation of the log-fitness is sufficient to describe a fitness optimum. Any higher-order terms would become negligible around the optimum. Yet, Condition (10) shows that arbitrary third

order perturbations of the Gaussian log-fitness function will promote adaptive evolution of the mean phenotype, as long as the first and third derivatives of the log-fitness share the same sign. It may be argued that the third order term should be exactly zero, to preserve symmetry. Even then, fourth order perturbations $-\alpha_2 z^2 - \alpha_4 z^4$ of the Gaussian log-fitness also satisfy Condition (10), provided that $\alpha_4 > \alpha_2^2/3$. Therefore, our results are likely to apply to a broad range of non-Gaussian fitness landscapes.

This raises the question of the indirect selection of phenotypic noise for its specific impact on the gradient of relative genotypic fitness. Populations could fix mutations that increase the phenotypic noise by hitch hiking as a result of an enhanced rate of evolution. This could impact *e.g.* the evolution of bet-hedging strategies (when the location of the fitness optimum fluctuates through time, Beaumont et al. 2009; Bruijning et al. 2019), or more complex evolutionary outcomes such as the “survival of the flattest”, where a population undergoing a high mutation rate preferably evolves towards optima of intermediate fitness, but with a plateau reducing the fraction of deleterious mutations (Wilke et al., 2001).

Although our study mainly provides theoretical arguments, recent experimental studies support our results. Bódi et al. (2017) developed inducible synthetic gene circuits to generate varying degrees of expression stochasticity of an anti-fungal resistance gene in *Saccharomyces cerevisiae*. They showed that phenotypic noise enhances the adaptive value of beneficial mutations when the expression stochasticity is higher. By altering the expression noise of the TDH3 gene in *Saccharomyces cerevisiae*, Duveau et al. (2018) showed that an increase in expression noise can be deleterious or beneficial, depending on the difference between the average expression level of a genotype and the expression level maximizing fitness: Far from the optimal expression level, expression noise is beneficial.

When organisms exhibit multiple phenotypic characters under stabilizing selection, the cost of complexity (Fisher, 1930; Orr, 2000) is expected to strongly reduce the fraction of beneficial mutations, and to slow down the rate of adaptive evolution of the mean phenotype towards the fitness optimum. Similarly, the impact of phenotypic noise on

organismal fitness cannot simply be extrapolated from the single phenotypic character scenario.

Our results show that when assuming a fully evolvable phenotypic noise in multiple dimensions (each dimension corresponding to a phenotypic character), the best phenotypic noise configuration far from the fitness optimum is aligned and fully correlated with the direction of the optimum, *i.e.* phenotypic noise undergoes a dimensionality reduction towards a single dimension. These results echo others showing that additive genetic correlations (the “G matrix”, Lande 1980) sometimes align towards the lines of least-resistance and the direction of selection (Penna et al., 2017), as suggested by Schluter (1996). A similar result exists for the evolution of the reaction-norm (Draghi and Whitlock, 2012; Lind et al., 2015; Gibert et al., 2019). Moreover, using numerical simulations, we show that when evolving populations reach such a phenotypic noise configuration, the fitness benefit of noise in one dimension is recovered. However, when the number of phenotypic characters under selection is too high (typically for $n > 7$), phenotypic noise suffers from complexity as well.

While to our knowledge, no experimental study has shown that phenotypic noise promotes adaptive evolution of the mean phenotype for complex phenotypes, several authors have reported multi-characters phenotypic noise aligned with the direction of selection in different species, such as *Drosophila serrata* (Sztepanacz et al., 2017) or *Daphnia* (Cressler et al., 2017). For example, Cressler et al. (2017) demonstrated the existence of correlated phenotypic noise on *Daphnia pulicaria* (a freshwater zooplankton). By measuring three integrated phenotypic characters at the individual level (body growth, number of eggs and longevity) on different populations of genetic variants, they showed that there was no significant genetic correlations between characters, while there is strong evidence for positive non-genetic correlations between characters: Increasing phenotypic noise enhances growth rate when non-genetic correlations between characters are positive, in agreement with our prediction on the evolution of phenotypic noise for multiple phenotypic characters.

Experimental studies also suggest that both the amplitude and the correlation of phenotypic noise on multiple characters are evolvable (Stewart-Ornstein et al., 2012; Yvert et al., 2013). Moreover, the ability of the genotype-to-phenotype map to shape the random distribution of phenotypes, independently from the genetic variability, has been recently suggested by Sato and Kaneko (2019); Sakata and Kaneko (2020). They have shown with analytical and numerical approaches that thanks to the evolution of the genotype-to-phenotype map, the distribution of phenotypes in a population can be restricted to a subspace as a result of evolution in variables environments. All these results suggest that the evolution of a flattened phenotypic noise aligned with the fitness optimum is possible. Metzger et al. (2015) have also shown that sequences associated to expression noise in the gene TDH3 of *Saccharomyces cerevisiae* evolve faster than sequences associated to the mean expression level, suggesting that phenotypic noise could indeed evolve faster than the mean phenotype for some phenotypic characters.

Phenotypic noise is also a concern in cancer evolution, where it is known to facilitate the emergence of cancer resistance (Frank and Rosner, 2012; Huang, 2012; Pisco et al., 2013; Shaffer et al., 2017). Phenotypic noise could also play a role in the process of cell differentiation (Pujadas and Feinberg, 2012). Richard et al. (2016) showed that during the differentiation of chicken erythrocytes, gene expression patterns temporarily increase in variability, and then decrease when the cells reach the differentiated state. Although evolutionary arguments are delicate to apply to cell differentiation, one could speculate that evolution has shaped the epigenetic landscape such that differentiated phenotypic states are hills surrounded by flat regions where phenotypic noise could speed up cell differentiation.

Our study can be extended to more complex fitness landscapes, where the fitness value does not only depend on the distance from a single fitness optimum. Multi-peak and high-dimensional fitness landscapes containing plateaus of positive fitness could be used to evaluate the impact of an evolvable phenotypic noise on phenotypic innovation. Similarly, it would be interesting to study the impact of an evolvable phenotypic noise in

variable environments having regions of plateauing fitness. It is also important to couple an evolvable phenotypic noise with evolvable genetic variability, mutation rates, and genetic regulation. Indeed, experimental results demonstrate the lack of realism of the universal pleiotropy assumption (see *e.g.* Wagner et al. 2008), and suggest that genetic variability could evolve towards a low dimensional distribution, just like phenotypic noise (Penna et al., 2017). Mutation rates are also known to evolve, at least temporarily, during adaptation events, as shown by the existence of mutator strains in micro-organisms (Taddei et al., 1997). Genetic regulation plays an important role in adaptive evolution as well, through the evolution of evolvability and robustness (see *e.g.* Crombach and Hogeweg 2008). The evolutive interaction of these multiple factors of genetic and phenotypic variability could lead to non-intuitive results.

Finally, our findings on the evolution of phenotypic noise during adaptation events could be used to predict the future direction of evolution, and to localize the direction of the fitness optimum in the phenotypic space. By tracking the evolution of phenotypic noise experimentally, it could be possible to find which selective pressures are at work on organisms, and to anticipate the next evolution steps. By deciphering the conditions in which phenotypic noise evolves towards specific patterns, our results may contribute to the growing field of predictive evolution.

Supporting Information

Figure S1. Impact of phenotypic noise on the genotypic fitness and the gradient of relative genotypic fitness.

Figure S2. Shape of the fitness function $w(z)$ depending on α , β and Q .

Figure S3. Examples of phenotypic distributions given a genotype $\{\mu, \sigma\}$.

Figure S4. Simulated trajectories of populations with evolvable phenotypic noise.

Appendix S1. Analytical study of the impact of and evolvable phenotypic noise on fitness.

Script S1. Numerical approach to compute the isoclines $\frac{\partial W(\mu, \sigma)}{\partial \sigma} = 0$ and $\frac{\partial^2 \ln W(\mu, \sigma)}{\partial \sigma \partial \mu} = 0$.

Script S2. Simulation framework.

References

- Anderson, T. W., Olkin, I., and Underhill, L. G. (1987). Generation of random orthogonal matrices. *SIAM Journal on Scientific and Statistical Computing*, 8(4):625–629.
- Beaumont, H. J., Gallie, J., Kost, C., Ferguson, G. C., and Rainey, P. B. (2009). Experimental evolution of bet hedging. *Nature*, 462(7269):90–93.
- Bódi, Z., Farkas, Z., Nevozhay, D., Kalapis, D., Lázár, V., Csörgő, B., Nyerges, Á., Szamecz, B., Fekete, G., Papp, B., Araújo, H., Oliveira, J. L., Moura, G., Santos, M. A., Székely, T., Balázsi, G., and Pál, C. (2017). Phenotypic heterogeneity promotes adaptive evolution. *PLOS Biology*, 15(5):e2000644.

- Boukhibar, L. M. and Barkoulas, M. (2016). The developmental genetics of biological robustness. *Annals of Botany*, 117(5):699–707.
- Bruijning, M., Metcalf, C. J. E., Jongejans, E., and Ayroles, J. F. (2019). The evolution of variance control. *Trends in ecology & evolution*.
- Cressler, C. E., Bengtson, S., and Nelson, W. A. (2017). Unexpected nongenetic individual heterogeneity and trait covariance in *Daphnia* And its consequences for ecological and evolutionary dynamics. *The American Naturalist*, 190(1):E13–E27.
- Crombach, A. and Hogeweg, P. (2008). Evolution of evolvability in gene regulatory networks. *PLoS computational biology*, 4(7).
- Draghi, J. (2019). Phenotypic variability can promote the evolution of adaptive plasticity by reducing the stringency of natural selection. *Journal of evolutionary biology*.
- Draghi, J. A. and Whitlock, M. C. (2012). Phenotypic plasticity facilitates mutational variance, genetic variance, and evolvability along the major axis of environmental variation. *Evolution: International Journal of Organic Evolution*, 66(9):2891–2902.
- Duveau, F., Hodgins-Davis, A., Metzger, B. P., Yang, B., Tryban, S., Walker, E. A., Lybrook, T., and Wittkopp, P. J. (2018). Fitness effects of altering gene expression noise in *saccharomyces cerevisiae*. *Elife*, 7:e37272.
- Eldar, A. and Elowitz, M. B. (2010). Functional roles for noise in genetic circuits. *Nature*, 467(7312):167–173.
- Eling, N., Morgan, M. D., and Marioni, J. C. (2019). Challenges in measuring and understanding biological noise. *Nature Reviews Genetics*, page 1.
- Elowitz, M. B., Levine, A. J., Siggia, E. D., and Swain, P. S. (2002). Stochastic Gene Expression in a Single Cell. *Science*, 297(5584):1183–1186.

- Espinosa-Soto, C., Martin, O. C., and Wagner, A. (2011). Phenotypic plasticity can facilitate adaptive evolution in gene regulatory circuits. *BMC evolutionary biology*, 11(1):5.
- Falconer, D. and Robertson, A. (1956). Selection for environmental variability of body size in mice. *Molecular and General Genetics MGG*, 87(3):385–391.
- Fisher, R. A. (1930). *The genetical theory of natural selection: a complete variorum edition*. Oxford University Press, Oxford (UK).
- Forsman, A. (2015). Rethinking phenotypic plasticity and its consequences for individuals, populations and species. *Heredity*, 115(4):276.
- Frank, S. A. and Rosner, M. R. (2012). Nonheritable cellular variability accelerates the evolutionary processes of cancer. *PLoS biology*, 10(4):e1001296.
- Fraser, H. B., Hirsh, A. E., Giaever, G., Kumm, J., and Eisen, M. B. (2004). Noise minimization in eukaryotic gene expression. *PLoS Biology*, 2(6):834–838.
- Gavrilets, S. and Hastings, A. (1994). A quantitative-genetic model for selection on developmental noise. *Evolution*, 48(5):1478–1486.
- Gibert, P., Debat, V., and Ghalambor, C. K. (2019). Phenotypic plasticity, global change, and the speed of adaptive evolution. *Current opinion in insect science*.
- Hill, W. G. and Mulder, H. A. (2010). Genetic analysis of environmental variation. *Genetics Research*, 92(5-6):381–395.
- Hortsch, S. K. and Kremling, A. (2018). Characterization of noise in multistable genetic circuits reveals ways to modulate heterogeneity. *PloS one*, 13(3):e0194779.
- Huang, S. (2012). Tumor progression: Chance and necessity in Darwinian and Lamarckian somatic (mutationless) evolution. *Progress in Biophysics and Molecular Biology*, 110(1):69–86.

- Ito, Y., Toyota, H., Kaneko, K., and Yomo, T. (2009). How selection affects phenotypic fluctuation. *Molecular Systems Biology*, 5(264):264.
- Kawecki, T. J. (2000). The evolution of genetic canalization under fluctuating selection. *Evolution*, 54(1):1–12.
- Keren, L., Hausser, J., Lotan-Pompan, M., Vainberg Slutskin, I., Alisar, H., Kaminski, S., Weinberger, A., Alon, U., Milo, R., and Segal, E. (2016). Massively Parallel Interrogation of the Effects of Gene Expression Levels on Fitness. *Cell*, 166(5):1282–1294.e18.
- Lande, R. (1975). The maintenance of genetic variability by mutation in a polygenic character with linked loci. *Genetics Research*, 26(3):221–235.
- Lande, R. (1976). Natural selection and random genetic drift in phenotypic evolution. *Evolution*, 30(2):314–334.
- Lande, R. (1979). Quantitative genetic analysis of multivariate evolution, applied to brain: body size allometry. *Evolution*, 33(1Part2):402–416.
- Lande, R. (1980). The genetic covariance between characters maintained by pleiotropic mutations. *Genetics*, 94(1):203–215.
- Lehner, B. (2008). Selection to minimise noise in living systems and its implications for the evolution of gene expression. *Molecular Systems Biology*, 4(170):170.
- Lind, M. I., Yarlett, K., Reger, J., Carter, M. J., and Beckerman, A. P. (2015). The alignment between phenotypic plasticity, the major axis of genetic variation and the response to selection. *Proceedings of the Royal Society B: Biological Sciences*, 282(1816):20151651.
- Martin, G. (2014). Fisher’s geometrical model emerges as a property of complex integrated phenotypic networks. *Genetics*, 197(1):237–255.

- Martin, G. and Lenormand, T. (2006). A general multivariate extension of Fisher’s geometrical model and the distribution of mutation fitness effects across species. *Evolution*, 60(5):893–907.
- Metzger, B. P. H., Yuan, D. C., Gruber, J. D., Dubeau, F. D., and Wittkopp, P. J. (2015). Selection on noise constrains variation in a eukaryotic promoter. *Nature*, 521(521):344–347.
- Mineta, K., Matsumoto, T., Osada, N., and Araki, H. (2015). Population genetics of non-genetic traits: Evolutionary roles of stochasticity in gene expression. *Gene*, 562(1):16–21.
- Mulder, H. A., Gienapp, P., and Visser, M. E. (2016). Genetic variation in variability: phenotypic variability of fledging weight and its evolution in a songbird population. *Evolution*, 70(9):2004–2016.
- Newman, J. R. S., Ghaemmaghami, S., Ihmels, J., Breslow, D. K., Noble, M., DeRisi, J. L., and Weissman, J. S. (2006). Single-cell proteomic analysis of *S. cerevisiae* reveals the architecture of biological noise. *Nature*, 441(7095):840–846.
- Ohya, Y., Kimori, Y., Okada, H., and Ohnuki, S. (2015). Single-cell phenomics in budding yeast. *Molecular Biology of the Cell*, 26(22):3920–3925.
- Ordas, B., Malvar, R. A., and Hill, W. G. (2008). Genetic variation and quantitative trait loci associated with developmental stability and the environmental correlation between traits in maize. *Genetics research*, 90(5):385–395.
- Orr, H. A. (2000). Adaptation and the Cost of Complexity. *Evolution*, 54(1):13–20.
- Orr, H. A. (2005). The genetic theory of adaptation: a brief history. *Nature Reviews Genetics*, 6(2):119.
- Paenke, I., Sendhoff, B., and Kawecki, T. J. (2007). Influence of plasticity and learning on evolution under directional selection. *The American Naturalist*, 170(2):E47–E58.

- Pal, C. (1998). Plasticity, memory and the adaptive landscape of the genotype. *Proceedings of the Royal Society of London. Series B: Biological Sciences*, 265(1403):1319–1323.
- Pál, C. and Miklós, I. (1999). Epigenetic inheritance, genetic assimilation and speciation. *Journal of Theoretical Biology*, 200(1):19–37.
- Payne, J. L. and Wagner, A. (2019). The causes of evolvability and their evolution. *Nature Reviews Genetics*, 20(1):24–38.
- Pelabon, C., Hansen, T. F., Carter, A. J., and Houle, D. (2010). Evolution of variation and variability under fluctuating, stabilizing, and disruptive selection. *Evolution: International Journal of Organic Evolution*, 64(7):1912–1925.
- Penna, A., Melo, D., Bernardi, S., Oyarzabal, M. I., and Marroig, G. (2017). The evolution of phenotypic integration: How directional selection reshapes covariation in mice. *Evolution*, 71(10):2370–2380.
- Pisco, A. O., Brock, A., Zhou, J., Moor, A., Mojtahedi, M., Jackson, D., and Huang, S. (2013). Non-Darwinian dynamics in therapy-induced cancer drug resistance. *Nature Communications*, 4:2467.
- Pujadas, E. and Feinberg, A. P. (2012). Regulated noise in the epigenetic landscape of development and disease. *Cell*, 148(6):1123–1131.
- Raser, J. M. and O’Shea, E. K. (2005). Noise in Gene Expression: Orgins, Consequences, and Control. *Science*, 309(5743):2010–2013.
- Reyes, J., Chen, J.-Y., Stewart-Ornstein, J., Karhohs, K. W., Mock, C. S., and Lahav, G. (2018). Fluctuations in p53 signaling allow escape from cell-cycle arrest. *Molecular cell*, 71(4):581–591.
- Richard, A., Boullu, L., Herbach, U., Bonnafoux, A., Morin, V., Vallin, E., Guillemin, A., Gao, N. P., Gunawan, R., Cosette, J., et al. (2016). Single-cell-based analysis

- highlights a surge in cell-to-cell molecular variability preceding irreversible commitment in a differentiation process. *PLoS biology*, 14(12):e1002585.
- Robertson, A. (1956). The effect of selection against extreme deviants based on deviation or on homozygosis. *Journal of Genetics*, 54(2):236.
- Saito, N., Ishihara, S., and Kaneko, K. (2013). Baldwin effect under multipeaked fitness landscapes: phenotypic fluctuation accelerates evolutionary rate. *Physical Review E*, 87(5):052701.
- Sakata, A. and Kaneko, K. (2020). Dimensional reduction in evolving spin-glass model: correlation of phenotypic responses to environmental and mutational changes. *arXiv preprint arXiv:2001.03714*.
- Sato, T. U. and Kaneko, K. (2019). Evolutionary dimension reduction in phenotypic space. *arXiv preprint arXiv:1910.01297*.
- Schluter, D. (1996). Adaptive radiation along genetic lines of least resistance. *Evolution*, 50(5):1766–1774.
- Schmutzer, M. and Wagner, A. (2020). Gene expression noise can promote the fixation of beneficial mutations in fluctuating environments. *bioRxiv*.
- Shaffer, S. M., Dunagin, M. C., Torborg, S. R., Torre, E. A., Emert, B., Krepler, C., Beqiri, M., Sproesser, K., Brafford, P. A., Xiao, M., et al. (2017). Rare cell variability and drug-induced reprogramming as a mode of cancer drug resistance. *Nature*, 546(7658):431.
- Shen, X., Pettersson, M., Rönnegård, L., and Carlborg, Ö. (2012). Inheritance beyond plain heritability: variance-controlling genes in *arabidopsis thaliana*. *PLoS genetics*, 8(8):e1002839.
- Stewart-Ornstein, J., Weissman, J. S., and El-Samad, H. (2012). Cellular noise regulons underlie fluctuations in *saccharomyces cerevisiae*. *Molecular cell*, 45(4):483–493.

- Sztepanacz, J. L., McGuigan, K., and Blows, M. W. (2017). Heritable micro-environmental variance covaries with fitness in an outbred population of *Drosophila serrata*. *Genetics*, 206(4):2185–2198.
- Taddei, F., Radman, M., Maynard-Smith, J., Toupance, B., Gouyon, P.-H., and Godelle, B. (1997). Role of mutator alleles in adaptive evolution. *Nature*, 387(6634):700–702.
- Tenaillon, O. (2014). The utility of Fisher’s geometric model in evolutionary genetics. *Annual review of ecology, evolution, and systematics*, 45:179–201.
- Tufto, J. (2015). Genetic evolution, plasticity, and bet-hedging as adaptive responses to temporally autocorrelated fluctuating selection: A quantitative genetic model. *Evolution*, 69(8):2034–2049.
- Viñuelas, J., Kaneko, G., Coulon, A., Beslon, G., and Gandrillon, O. (2012). Towards experimental manipulation of stochasticity in gene expression. *Progress in biophysics and molecular biology*, 110(1):44–53.
- Wagner, G. P., Kenney-Hunt, J. P., Pavlicev, M., Peck, J. R., Waxman, D., and Cheverud, J. M. (2008). Pleiotropic scaling of gene effects and the ‘cost of complexity’. *Nature*, 452(7186):470–472.
- Wang, Z. and Zhang, J. (2011). Impact of gene expression noise on organismal fitness and the efficacy of natural selection. *Proceedings of the National Academy of Sciences of the United States of America*, 108(16):E67–76.
- Welch, J. J. and Waxman, D. (2003). Modularity and the cost of complexity. *Evolution*, 57(8):1723–1734.
- Wilke, C. O., Wang, J. L., Ofria, C., Lenski, R. E., and Adami, C. (2001). Evolution of digital organisms at high mutation rates leads to survival of the flattest. *Nature*, 412(6844):331–333.

Yvert, G., Ohnuki, S., Nogami, S., Imanaga, Y., Fehrmann, S., Schacherer, J., and Ohya, Y. (2013). Single-cell phenomics reveals intra-species variation of phenotypic noise in yeast. *BMC Systems Biology*, 7(1):54.

Zhang, Z., Qian, W., and Zhang, J. (2009). Positive selection for elevated gene expression noise in yeast. *Molecular Systems Biology*, 5(1):299.

Phenotypic Noise and the Cost of Complexity.
APPENDIX S1—Analytical study of the impact of
and evolvable phenotypic noise on fitness

Contents

1	Inflection point of the fitness function $w(z)$, depending on parameters α and Q	2
2	Impact of phenotypic noise on the gradient of relative genotypic fitness	4
3	For multiple characters under selection, the best phenotypic noise configuration is fully correlated and aligned with the fitness optimum	10

List of Figures

1	Phenotypic noise increases the gradient of relative genotypic fitness on plateaus of log-fitness and their borders.	9
2	Anisotropic and correlated phenotypic noise for two phenotypic characters under selection.	13

1 Inflection point of the fitness function $w(z)$, depending on parameters α and Q

We consider a large population of individuals under stabilizing selection and with discrete generations. We define each individual's genotype by the pair $\{\mu, \sigma\}$, $\mu \in \mathbb{R}$ being the mean phenotype (or breeding value) and $\sigma \in \mathbb{R}^+$ the phenotypic noise amplitude. Both μ and σ are controlled genetically, and evolvable. Individual continuous phenotype $z \in \mathbb{R}$ follows a normal distribution of mean μ and variance σ^2 : $p(z|\mu, \sigma^2) \sim \mathcal{N}(\mu, \sigma^2)$. Individual absolute fitness w depends on the phenotype z . The fitness function $w(z)$ is assumed positive, symmetric, three times differentiable and possessing at least one non-degenerate optimum (Martin, 2014). We chose w as the unimodal function

$$w(z) = (1 - \beta)e^{-\alpha|z|^Q} + \beta. \quad (1)$$

$\alpha > 0$ controls the sharpness of the fitness peak at $z = 0$. $\beta \in [0, 1[$ controls the minimal fitness, when $|z| \gg 0$. The shape parameter $Q \geq 2$, controls how close the fitness peak is from a step function (when $Q = +\infty$). When $\beta = 0$ and $Q = 2$, w is a Gaussian fitness function with variance $1/(2\alpha)$. When $2 < Q \leq 3$, the third derivative does not exist in $z = 0$. This is only a technical problem that does not affect the results presented here, but it can be avoided by restricting $Q = 2$ or $Q > 3$. The absolute fitness of a genotype $\{\mu, \sigma\}$ (or genotypic fitness) is the expected fitness across all possible phenotypes given the phenotypic noise amplitude σ (Lande, 1979),

$$W(\mu, \sigma) = \int_{-\infty}^{+\infty} p(z|\mu, \sigma^2)w(z)dz. \quad (2)$$

Using a Taylor expansion, it has been shown (Paenke et al., 2007) that the genotypic fitness (Eq. 2) can be expressed by:

$$W(\mu, \sigma) = w(\mu) + \frac{\sigma^2}{2}w''(\mu) + O(\sigma^4), \quad (3)$$

where w'' is the second derivative of w . Hence, the effect of small phenotypic noise (such that $O(\sigma^4)$ remains negligible) on genotypic fitness is determined by the local curvature: when $w(\mu)$ is convex ($w''(\mu) > 0$), phenotypic noise increases the genotypic fitness. When $w(\mu)$ is concave ($w''(\mu) < 0$), phenotypic noise decreases the genotypic fitness. This is a well-known result (Slatkin and Lande, 1976), which can also be obtained directly from the definition of W under weaker smoothness assumption, via Jensen's Inequality.

The first derivative of w is

$$w'(z) = -\alpha Q |z|^{Q-1} \text{sign}(z)(w - \beta). \quad (4)$$

The term $(w - \beta)$ is always positive, and $\text{sign}(w'(z)) = \text{sign}(-z)$, as expected. The second derivative of w is

$$w''(z) = \alpha Q |z|^{Q-2} (w - \beta) [\alpha Q |z|^Q - (Q - 1)]. \quad (5)$$

The inflection points of w are given by

$$|z|^Q = \frac{(Q - 1)}{\alpha Q}. \quad (6)$$

When α increases, the fitness peak gets sharper and inflection points move closer to the fitness optimum ($z = 0$). When the shape parameter Q increases, the fitness function approaches a step function, and the inflection points converge to $z_{\text{infl}} = \pm 1$. The minimal fitness β has no effect on the position of the inflection points.

In summary, **the phenotypic noise σ increases the genotypic fitness $W(\mu, \sigma)$ when the mean phenotype μ is beyond the inflection point of $w(\mu)$** , which is given by Equation 6. However, this analysis does not provide the optimal value of σ that maximizes $W(\mu, \sigma)$ (except below the inflection point, where the optimal value of σ is zero). To do so, we must compute numerically σ such that $\frac{\partial W(\mu, \sigma)}{\partial \sigma} = 0$ (see main manuscript).

2 Impact of phenotypic noise on the gradient of relative genotypic fitness

As discussed by Paenke et al. (2007), in the absence of dominance or epistasis and if all the genetic variation is additive or if reproduction is asexual, the response to selection equals the selection differential, *i.e.* the difference of the base population mean and the mean after selection (Lande, 1979). Moreover, Paenke et al. (2007) have shown that if the effect of phenotypic noise on the genotypic fitness $W(\mu, \sigma)$ is monotonic, which holds when genotypic variability is small, it is sufficient to study the impact of phenotypic noise on the gradient of relative genotypic fitness $\frac{\partial \ln W(\mu, \sigma)}{\partial \mu}$.

Using a Taylor expansion around $\sigma = 0$, we show that the effect of phenotypic noise amplitude σ on the gradient of relative genotypic fitness, *i.e.* $\frac{\partial^2 \ln W(\mu, \sigma)}{\partial \mu \partial \sigma}$, is given by

$$\frac{\partial^2 \ln W(\mu, \sigma)}{\partial \mu \partial \sigma} \approx \frac{w'(\mu)}{w(\mu)} + \frac{\sigma^2}{2w(\mu)^2} [w(\mu)w'''(\mu) - w'(\mu)w''(\mu)] + O(\sigma^3). \quad (7)$$

Thus, the phenotypic noise amplitude σ can increase the gradient of relative genotypic fitness, and promotes adaptive evolution of the mean phenotype, provided that there is a non-zero solution to (Paenke et al. 2007; Figs. 1A-B):

$$\text{sign}(w(\mu)w'''(\mu) - w'(\mu)w''(\mu)) = \text{sign } w'(\mu). \quad (8)$$

There is an equivalent condition in term of the log-fitness. Let $f(\mu) = \ln(w(\mu))$, then

$$\begin{aligned} w'(\mu) &= e^{f(\mu)} f'(\mu), \\ w''(\mu) &= e^{f(\mu)} [f''(\mu) + f'(\mu)f'(\mu)], \\ w'''(\mu) &= e^{f(\mu)} [f'''(\mu) + 3f'(\mu)f''(\mu) + (f'(\mu))^3]. \end{aligned}$$

Equation (8) is equivalent to

$$\text{sign}(f''' + 2f'f'') = \text{sign}(f'). \quad (9)$$

Equations (8, 9) can be satisfied when the fitness function is either convex ($w'' > 0$) or concave ($w'' < 0$), with slightly different conditions. First, around a local fitness optimum, where $w'' < 0$, f'' is also negative. Condition (9) is equivalent to

$$\text{sign}(f''') = \text{sign}(f') \quad (10)$$

and

$$|f'''| > |2f'f''|. \quad (11)$$

When the fitness function is convex ($w'' > 0$), condition (8) is equivalent to

$$\text{sign}(w''') = \text{sign}(w') \quad (12)$$

and

$$|w'''w| > |w'w''|. \quad (13)$$

These conditions can be summarized in the following way. When we move along the fitness gradient in the direction given by w' (downward if $w'' < 0$ and upward if $w'' > 0$), Conditions (8, 9) are satisfied if and only if the fitness curvature increases fast enough in magnitude. This corresponds to four basic local fitness shapes of the fitness function.

- the left shoulder \curvearrowright ($w' > 0, w'' < 0, w''' > 0$; Fig. 1C, panel 2),
- the right shoulder \curvearrowleft ($w' < 0, w'' < 0, w''' < 0$; Fig. 1C, panel 3),

- the left hill foot \curvearrowright ($w' > 0, w'' > 0, w''' > 0$; Fig. 1C, panel 1),
- the right hill foot \curvearrowleft ($w' < 0, w'' > 0, w''' < 0$; Fig. 1C, panel 4).

Around a fitness optimum, the combination of shoulders forms a relatively flat region, or a plateau: \frown . A local shape that cannot satisfy Conditions (8, 9) is the one given by the Gaussian fitness, \curvearrowright , where the curvature decreases as we move downward the fitness. Away from the fitness optimum, the fitness curve forms a flat region flanked by a steep hill foot. These results show that around a fitness optimum, the third derivative of the log-fitness plays an important role. Condition (11) can generically be satisfied, since the right-hand-side, f' vanishes at $\mu = 0$. The Gaussian fitness, as a second-order approximation, has a vanishing third derivative, and never satisfies the inequality. This indicates that when looking at the effect of phenotypic noise on adaptive evolution of the mean phenotype, a second-order approximation is not sufficient, and higher order terms can dominate.

Below, we derive explicit conditions for the fitness function (1) to satisfy the condition for phenotypic noise to promote adaptive evolution of the mean phenotype.

To predict regions of $w(z)$ where phenotypic noise promotes adaptive evolution of the mean phenotype, we need to make these statements more quantitative. To do so, one needs to compute the third derivative of the fitness function (1),

$$w'''(z) = \begin{cases} 4\alpha^2 z(w - \beta)[3 - 2\alpha z^2], & Q = 2, \\ \alpha Q |z|^{Q-3} \text{sign}(z)(w - \beta)[3\alpha Q(Q - 1)|z|^Q \\ - \alpha^2 Q^2 |z|^{2Q} - (Q - 1)(Q - 2)], & Q > 2. \end{cases} \quad (14)$$

We assume $\mu < 0$, the case $\mu > 0$ is symmetrical.

• **First**, we treat the Gaussian case ($Q = 2, \beta = 0$). The left-hand-side of Condition (8) is

$$w'''w - w'w'' = 8\alpha^2 \mu w^2. \quad (15)$$

The sign is always opposite to w' , so Condition 8 can never be satisfied.

- **Second**, if $Q = 2, \beta > 0$. The left-hand-side of Condition (8) is

$$w'''w - w'w'' = 4\alpha^2\mu(w - \beta)[2w - 2\alpha\beta\mu^2 + \beta]. \quad (16)$$

Condition 8 will be satisfied if $[2w - 2\alpha\beta\mu^2 + \beta] < 0$. This occurs, and phenotypic noise promotes adaptive evolution of the mean phenotype if

$$\mu^2 > \frac{2w + \beta}{2\alpha\beta}. \quad (17)$$

- **Third**, if $Q > 2, \beta = 0$, The left-hand-side of Condition (8) is

$$w'''w - w'w'' = \alpha Q |\mu|^{Q-3} \text{sign}(\mu) w^2 [2\alpha Q(Q-1)|\mu|^Q - (Q-1)(Q-2)]. \quad (18)$$

Condition 8 will be satisfied if the term in the square brackets is negative, that is if

$$|\mu|^Q < \frac{Q-2}{2\alpha Q}. \quad (19)$$

- **Fourth**, if $Q > 2, \beta > 0$, The left-hand-side of Condition (8) is

$$w'''w - w'w'' = \alpha Q |\mu|^{Q-3} \text{sign}(\mu) (w - \beta) \left[-\beta\alpha^2 Q^2 |\mu|^{2Q} + (2w + \beta)\alpha Q(Q-1)|\mu|^Q - w(Q-1)(Q-2) \right]. \quad (20)$$

Again, Condition 8 is satisfied if the term in the square brackets is negative. Notice that this term is a quadratic polynomial in $s = \alpha Q |\mu|^Q$,

$$-\beta s^2 + (2w + \beta)(Q-1)s - w(Q-1)(Q-2). \quad (21)$$

This polynomial admits two positive roots $0 < \mu_1 < \mu_2$, and is negative outside the interval $[\mu_1, \mu_2]$: the discriminant is $\Delta = 4w^2(Q-1)^2 + \beta^2(Q-1)^2 + 4w\beta(Q-1) > 0$.

Moreover it is negative and increasing at $s = 0$ and take a maximum at a positive value.

Therefore, we have the following proposition

Proposition 1 *Let $w(\mu)$ be the fitness function defined by Equation 1 and the genotypic fitness $W(\mu, \sigma)$ defined by Equation 2. Then*

$$\frac{\partial^2 \ln W(\mu, \sigma)}{\partial \mu \partial \sigma} > 0$$

if and only if one of the following properties is satisfied.

- $Q = 2$, $\beta > 0$, and $\mu^2 > (2w + \beta)/(2\alpha\beta)$,
- $Q > 2$, $\beta = 0$, and $|\mu|^Q < (Q - 2)/(2\alpha Q)$,
- $Q > 2$, $\beta > 0$, and $|\mu| \in I_1 \cup I_2$, where the intervals $I_1 =]0, \mu_1[$ and $I_2 =]\mu_2, +\infty[$, and μ_1, μ_2 are the two positive roots of the polynomial (21).

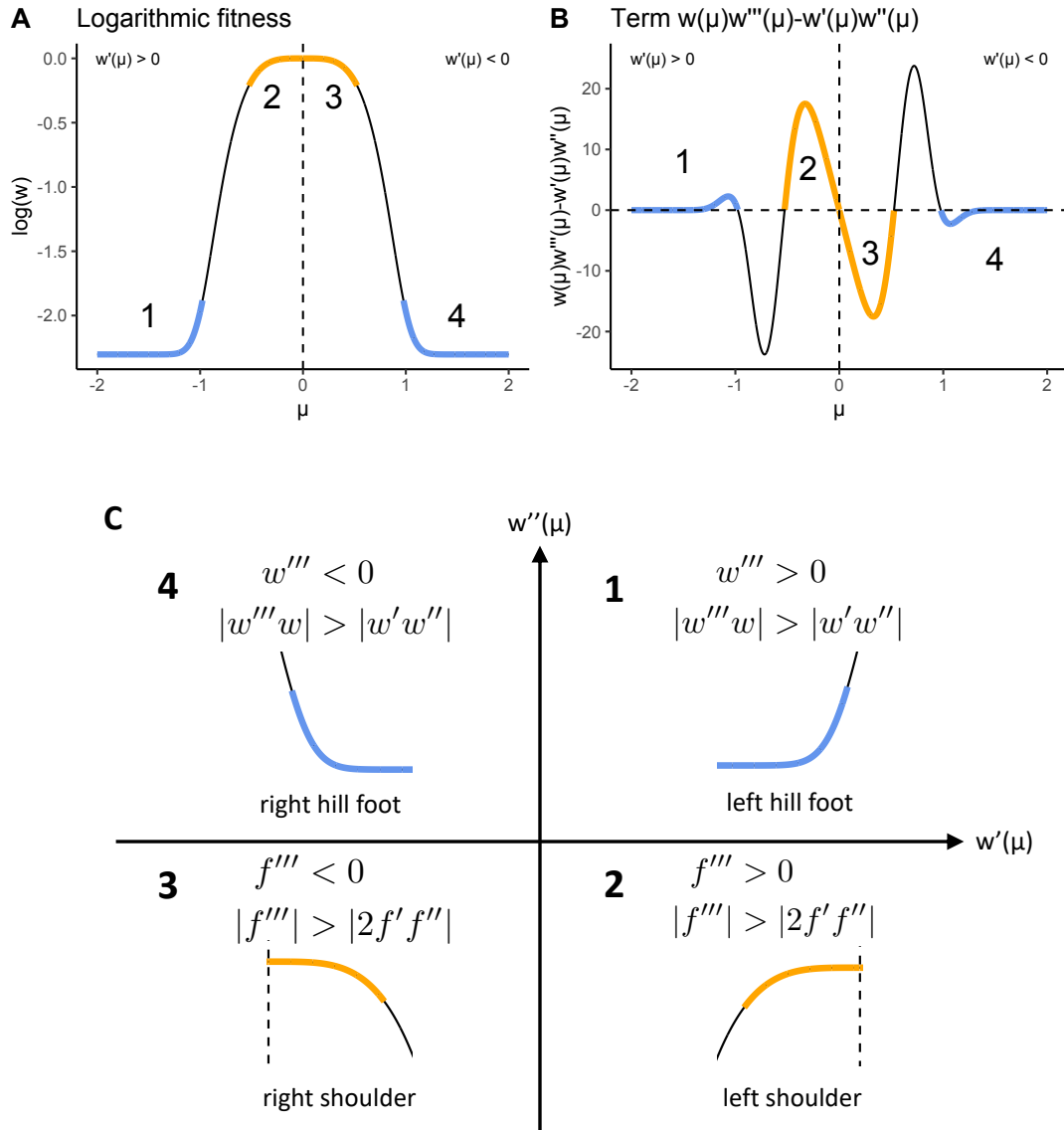


Figure 1: **Phenotypic noise increases the gradient of relative genotypic fitness on plateaus of log-fitness and their borders.** **A.** Logarithmic fitness $\ln w(z)$ where $\alpha = 3.125$, $\beta = 0.1$ and $Q = 4$. When μ is in the blue and orange regions (numbered from 1 to 4), phenotypic noise increases the gradient of relative genotypic fitness. **B.** Term $w(\mu)w'''(\mu) - w'(\mu)w''(\mu)$ depending on μ (Eq. 8). When μ is in the blue and orange regions (numbered from 1 to 4), phenotypic noise increases the gradient of relative genotypic fitness. **C.** Four cases corresponding to regions 1, 2, 3 and 4. In all cases, the analysis of the Conditions (8, 9) shows that phenotypic noise increases the gradient of relative genotypic fitness when the fitness function is shoulder-shaped or hillfoot-shaped, *i.e.*, with the fitness function defined in Equation 1, when the population is located on logarithmic fitness plateaus or at their borders.

3 For multiple characters under selection, the best phenotypic noise configuration is fully correlated and aligned with the fitness optimum

Let us consider the organism with genotype $\{\boldsymbol{\mu}, \boldsymbol{\sigma}, \boldsymbol{\theta}\}$ (see main manuscript) in a n -dimensional phenotypic space, sitting at a certain distance of the fitness optimum $\mathbf{z}_{opt} = \mathbf{0}$ of the fitness function $w(\mathbf{z}) = (1 - \beta)e^{-\alpha\|\mathbf{z}\|^Q} + \beta$ and under stabilizing selection (with $\|\boldsymbol{\mu}\| > |z_{infl}|$, see main manuscript). We describe the phenotypic noise of this organism by a multivariate normal distribution $\mathcal{N}_n(\boldsymbol{\mu}, \boldsymbol{\Sigma})$, $\boldsymbol{\Sigma}$ being the $n \times n$ covariance matrix built from $\boldsymbol{\sigma}$ and $\boldsymbol{\theta}$ (see main manuscript). This multivariate normal distribution can be represented by an hyper-ellipse in \mathbb{R}^n , as shown in Figure 2 for two phenotypic characters ($n = 2$).

We now define an orthonormal set of vectors $\mathbf{v}_1, \dots, \mathbf{v}_n$, forming a new basis with origin at $\boldsymbol{\mu}$. We align the direction of the first element \mathbf{v}_1 towards the fitness optimum \mathbf{z}_{opt} (Fig. 2A). Along the axis $\boldsymbol{\mu} + a\mathbf{v}_1$, a being a scalar, the organism $\{\boldsymbol{\mu}, \boldsymbol{\sigma}, \boldsymbol{\theta}\}$ experiences a convex fitness if $\|\boldsymbol{\mu}\| > |z_{infl}|$. Along all other axes $\boldsymbol{\mu} + a\mathbf{v}_i$, the organism experiences a concave fitness, and $\boldsymbol{\mu}$ is a local fitness optimum for all values of a (Fig. 2B). We denote by \mathbf{V} the matrix formed by the vector columns \mathbf{v}_i ,

$$\mathbf{V} = \left(\mathbf{v}_1 \mid \mathbf{v}_2 \mid \dots \right) \quad (22)$$

The goal here is to find the phenotypic noise configuration $\boldsymbol{\Sigma}$ that maximizes the genotypic fitness

$$W(\boldsymbol{\mu}, \boldsymbol{\Sigma}) = \int_{\mathbb{R}^n} p(\mathbf{z} \mid \boldsymbol{\mu}, \boldsymbol{\Sigma}) w(\mathbf{z}) d\mathbf{z}. \quad (23)$$

We first make a change of variables to center the phenotype around $\boldsymbol{\mu}$: $\mathbf{z} = \boldsymbol{\mu} + \boldsymbol{\epsilon}$, to obtain

$$W(\boldsymbol{\mu}, \boldsymbol{\Sigma}) = \int_{\mathbb{R}^n} p(\boldsymbol{\epsilon} \mid \mathbf{0}, \boldsymbol{\Sigma}) w(\boldsymbol{\mu} + \boldsymbol{\epsilon}) d\boldsymbol{\epsilon}. \quad (24)$$

If $\|\boldsymbol{\mu}\| > |z_{\text{infl}}|$, phenotypic noise correlated with \mathbf{v}_1 increases the genotypic fitness, and phenotypic noise correlated with any other directions $\mathbf{v}_i, i > 1$ decreases the genotypic fitness (Fig. 2B): For any covariance matrix $\boldsymbol{\Sigma}$ and for any $\boldsymbol{\epsilon} \sim \mathcal{N}_n(\mathbf{0}, \boldsymbol{\Sigma})$, the fitness $w(\boldsymbol{\mu} + \boldsymbol{\epsilon})$ of the phenotype $\mathbf{z} = \boldsymbol{\mu} + \boldsymbol{\epsilon}$ is always lower or equal to the fitness of its projection along the axis defined by \mathbf{v}_1 (*i.e.*, the distance to the fitness optimum is shorter after the projection). Thus:

$$\int_{\mathbb{R}^n} p(\boldsymbol{\epsilon}|\mathbf{0}, \boldsymbol{\Sigma})w(\boldsymbol{\mu} + \boldsymbol{\epsilon})d\boldsymbol{\epsilon} \leq \int_{\mathbb{R}^n} p(\boldsymbol{\epsilon}|\mathbf{0}, \boldsymbol{\Sigma})w(\boldsymbol{\mu} + \mathbf{v}_1^T \boldsymbol{\epsilon} \mathbf{v}_1)d\boldsymbol{\epsilon}. \quad (25)$$

We then express $\boldsymbol{\epsilon}$ in the basis \mathbf{V} by making the following variable change: $\mathbf{s} = \mathbf{V}^T \boldsymbol{\epsilon}$. Consequently, $\boldsymbol{\epsilon} = \mathbf{V}\mathbf{s}$, such that:

$$\begin{aligned} \mathbf{v}_1^T \boldsymbol{\epsilon} \mathbf{v}_1 &= \mathbf{v}_1^T \mathbf{V} \mathbf{s} \mathbf{v}_1 \\ &= s_1 \mathbf{v}_1. \end{aligned} \quad (26)$$

(s_1 is the first coefficient of the vector \mathbf{s}). We can rewrite the right term of the Equation 25 as follows:

$$\int_{\mathbb{R}^n} p(\mathbf{V}\mathbf{s}|\mathbf{0}, \boldsymbol{\Sigma})w(\boldsymbol{\mu} + s_1 \mathbf{v}_1)ds_1, \dots, ds_n. \quad (27)$$

The term $w(\boldsymbol{\mu} + s_1 \mathbf{v}_1)$ depends only on s_1 , so we can re-organize the integral,

$$\int_{\mathbb{R}} w(\boldsymbol{\mu} + s_1 \mathbf{v}_1) \left[\int_{\mathbb{R}^{n-1}} p(\mathbf{V}\mathbf{s}|\mathbf{0}, \boldsymbol{\Sigma})ds_2, \dots, ds_n \right] ds_1. \quad (28)$$

The probability density function $p(\mathbf{V}\mathbf{s}|\mathbf{0}, \boldsymbol{\Sigma})$ from Equation 28 is the same as $p(\mathbf{s}|\mathbf{0}, \mathbf{V}^T \boldsymbol{\Sigma} \mathbf{V})$ (by a change of variable). The inside integral in Equation 28,

$$\int_{\mathbb{R}^{n-1}} p(\mathbf{s}|\mathbf{0}, \mathbf{V}^T \boldsymbol{\Sigma} \mathbf{V})ds_2, \dots, ds_n, \quad (29)$$

describes the marginal density of s_1 , and follows the univariate normal law:

$$s_1 \sim \mathcal{N}\left(0, [\mathbf{V}^T \boldsymbol{\Sigma} \mathbf{V}]_{1,1}\right) \quad (30)$$

the subscript “1, 1” denoting the coefficient of the first row and first column.

Therefore, the integral 28 simplifies to

$$\int_{\mathbb{R}} w(\boldsymbol{\mu} + s_1 \mathbf{v}_1) p(s_1 | 0, [\mathbf{V}^T \boldsymbol{\Sigma} \mathbf{V}]_{1,1}) ds_1. \quad (31)$$

Equation 31 is the one dimensional genotypic fitness $W(\boldsymbol{\mu}, [\mathbf{V}^T \boldsymbol{\Sigma} \mathbf{V}]_{1,1})$, taken along the axis spanned by v_1 . Along this axis, there is an optimal phenotypic noise amplitude $[\mathbf{V}^T \boldsymbol{\Sigma} \mathbf{V}]_{1,1} = \sigma_{opt}^2$ that maximizes the genotypic fitness. The n -dimensional genotypic fitness can be maximized by the 1-dimensional genotypic fitness

$$\begin{aligned} W(\boldsymbol{\mu}, \boldsymbol{\Sigma}) &\leq \int_{\mathbb{R}} w(z) p(z | \|\boldsymbol{\mu}\|, [\mathbf{V}^T \boldsymbol{\Sigma} \mathbf{V}]_{1,1}) dz \\ &= W(\|\boldsymbol{\mu}\|, [\mathbf{V}^T \boldsymbol{\Sigma} \mathbf{V}]_{1,1}) \\ &\leq W(\|\boldsymbol{\mu}\|, \sigma_{opt}^2). \end{aligned}$$

Therefore, the n -dimensional genotypic fitness reaches its maximum when all the phenotypic noise is concentrated along the axis aligned with the direction to the fitness optimum. By expressing the covariance matrix $\boldsymbol{\Sigma}$ as an eigenvalue factorization, $\boldsymbol{\Sigma} = \mathbf{U} \mathbf{D} \mathbf{U}^T$, with $\mathbf{D} = \text{diag}(\boldsymbol{\sigma}^2)$, we obtain:

$$\mathbf{V}^T \boldsymbol{\Sigma} \mathbf{V} = \mathbf{V}^T \mathbf{U} \mathbf{D} \mathbf{U}^T \mathbf{V}. \quad (32)$$

The maximum genotypic fitness is reached when the first eigenvector \mathbf{u}_1 is aligned with \mathbf{v}_1 and $\boldsymbol{\sigma}^2 = \{\sigma_{opt}^2, 0, \dots, 0\}$ (Fig. 2A).

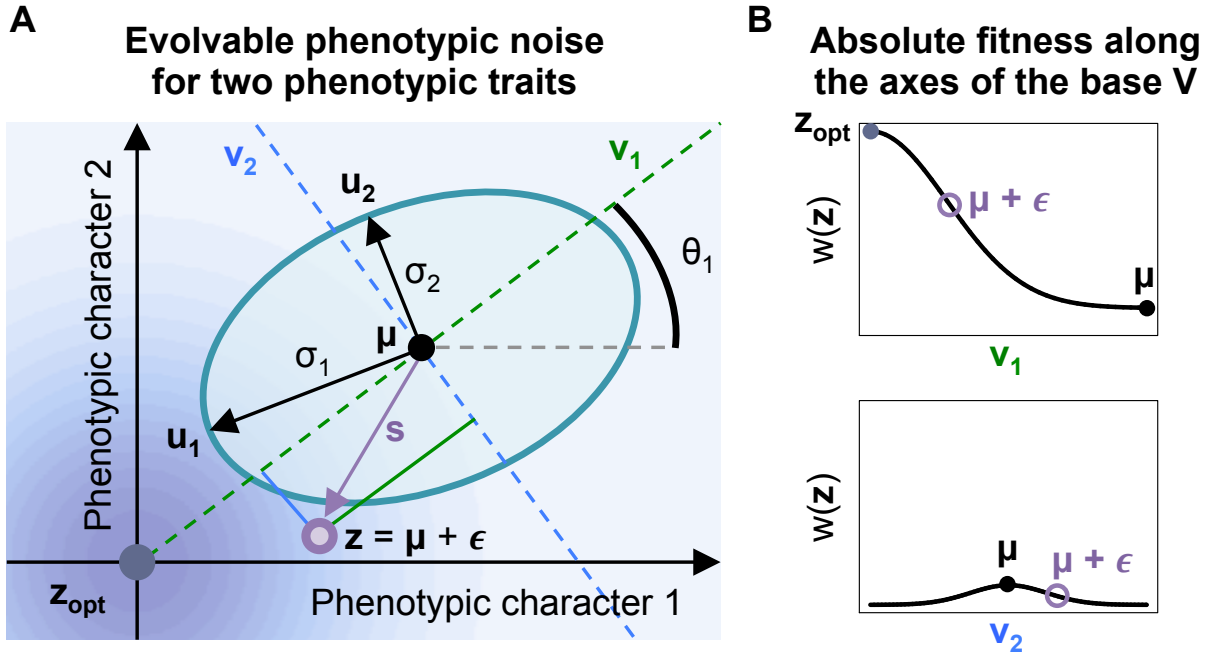


Figure 2: **Anisotropic and correlated phenotypic noise for two phenotypic characters under selection.** **A.** The phenotypic noise distribution of an organism with genotype $\{\boldsymbol{\mu}, \boldsymbol{\sigma}, \boldsymbol{\theta}\}$ is defined by a multivariate normal distribution with mean $\boldsymbol{\mu}$ (black dot), phenotypic noise amplitudes σ_1 and σ_2 (black arrows) along axes \mathbf{u}_1 and \mathbf{u}_2 , and a parameter of correlation θ_1 (black angle), defining a rotation of the basis $\mathbf{U} = (\mathbf{u}_1, \mathbf{u}_2)$. A phenotype \mathbf{z} (purple dot) is generated from the multivariate normal distribution by drawing a random vector $\boldsymbol{\epsilon} \sim \mathcal{N}_n(\mathbf{0}, \boldsymbol{\Sigma})$ (with $\boldsymbol{\Sigma}$ the covariance matrix built from $\boldsymbol{\sigma}$ and $\boldsymbol{\theta}$), such that $\mathbf{z} = \boldsymbol{\mu} + \boldsymbol{\epsilon}$. The contribution of $\boldsymbol{\epsilon}$ on each axis \mathbf{v}_1 (green solid segment) and \mathbf{v}_2 (blue solid segment) of the basis \mathbf{V} , where \mathbf{v}_1 is aligned with the fitness optimum \mathbf{z}_{opt} , is represented by the vector $\mathbf{s} = (s_1, s_2)^T$ (purple arrow). The fitness landscape is represented by a gradient of blue centered on the fitness optimum \mathbf{z}_{opt} (deep blue dot). **B.** Fitness along axes of the basis $\mathbf{V} = (\mathbf{v}_1, \mathbf{v}_2)$. Along axis \mathbf{v}_1 , directed towards the fitness optimum \mathbf{z}_{opt} , the organism experiences a convex absolute fitness (if $\|\boldsymbol{\mu}\| > |z_{infl}|$). Along axis \mathbf{v}_2 , orthogonal to \mathbf{v}_1 , the organism experiences a concave absolute fitness, sitting on a local fitness optimum.

References

- Lande, R. (1979). Quantitative genetic analysis of multivariate evolution, applied to brain: body size allometry. *Evolution*, 33(1Part2):402–416.
- Martin, G. (2014). Fisher’s geometrical model emerges as a property of complex integrated phenotypic networks. *Genetics*, 197(1):237–255.
- Paenke, I., Sendhoff, B., and Kawecki, T. J. (2007). Influence of plasticity and learning on evolution under directional selection. *The American Naturalist*, 170(2):E47–E58.
- Slatkin, M. and Lande, R. (1976). Niche width in a fluctuating environment-density independent model. *The American Naturalist*, 110(971):31–55.