



HAL
open science

Teacher's Personal Values and their Attitudes Toward Inclusive Education

Anne-Laure Perrin, Mickaël Jury, Caroline Desombre

► **To cite this version:**

Anne-Laure Perrin, Mickaël Jury, Caroline Desombre. Teacher's Personal Values and their Attitudes Toward Inclusive Education. 13ème CIPSLF, 2020, Lisbonne, Portugal. hal-02914005

HAL Id: hal-02914005

<https://hal.science/hal-02914005>

Submitted on 11 Aug 2020

HAL is a multi-disciplinary open access archive for the deposit and dissemination of scientific research documents, whether they are published or not. The documents may come from teaching and research institutions in France or abroad, or from public or private research centers.

L'archive ouverte pluridisciplinaire **HAL**, est destinée au dépôt et à la diffusion de documents scientifiques de niveau recherche, publiés ou non, émanant des établissements d'enseignement et de recherche français ou étrangers, des laboratoires publics ou privés.

SYMPOSIUM : APPORTS DE LA PSYCHOLOGIE SOCIALE
À LA COMPRÉHENSION DES ATTITUDES ET JUGEMENTS NÉGATIFS
À L'ÉGARD DES ÉLÈVES À BESOINS ÉDUCATIFS PARTICULIERS
EN CONTEXTE D'ÉCOLE INCLUSIVE

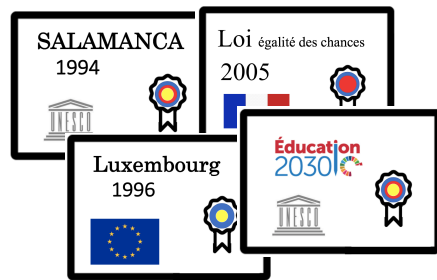
TEACHERS' PERSONAL VALUES
AND ATTITUDES TOWARD INCLUSIVE SCHOOL

Anne-Laure PERRIN – Mickaël JURY – Caroline DESOMBRE



INTRODUCTION

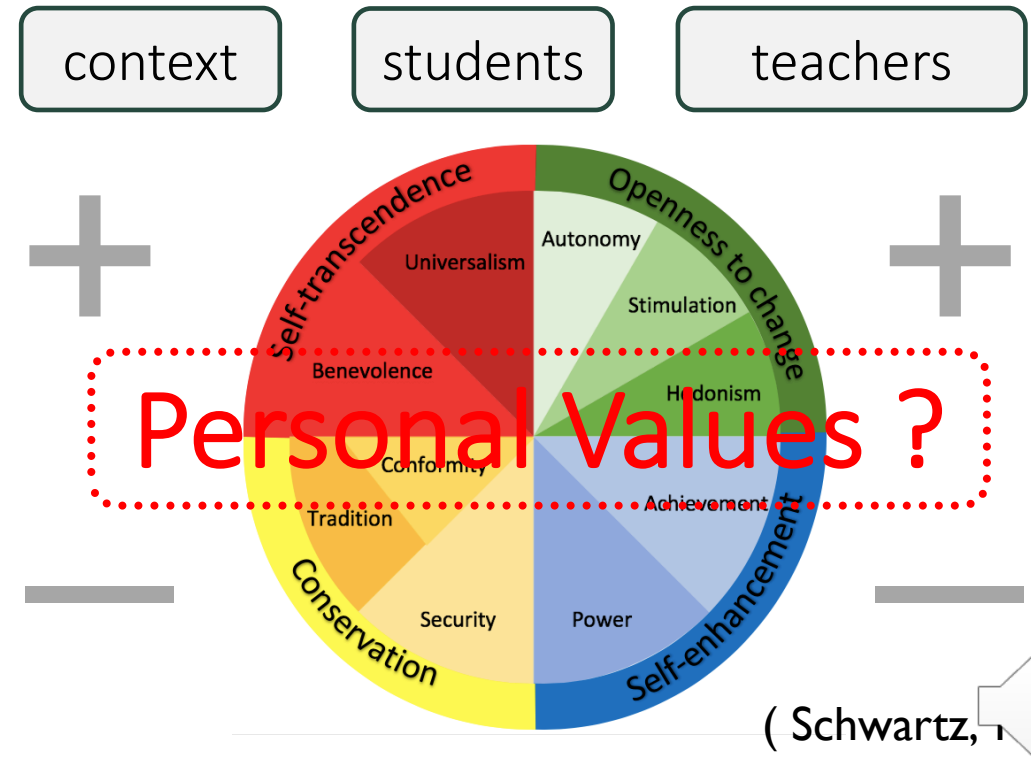
- Inclusive education in process



- Teacher attitudes toward inclusive education as a barrier (Elliott, 2008; Leatherman & Niemeyer, 2005).

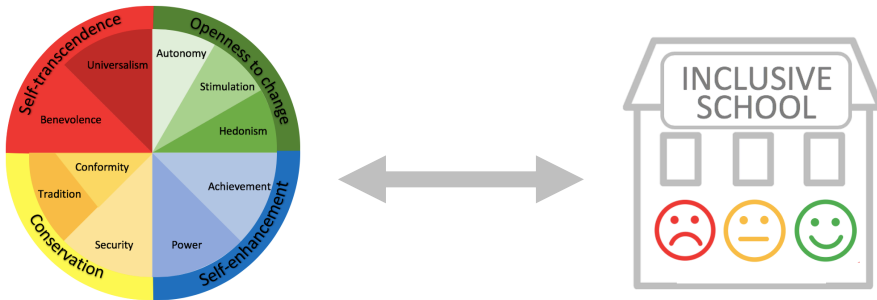


- Attitudes are influenced by various factors related to:



METHOD

■ Study 1 – Seeking for relationships



- Corelationnal study
- Online Survey
- **326** Teachers – Preservice and students teachers

■ **Attitudes** (Multidimensionnal Attitudes Toward Inclusive School : MATIES, Mahat, 2008) - 18 items

■ **Values** (Portrait Values Questionnaire :PVQ-RR Schwartz et al., 2012) - 57 items

■ Study 2 – Replication and SDB



- Corelationnal study
- Online Survey
- **527** Teachers – Preservice and students teachers

■ **Attitudes** (inspired by the MATIES, Mahat, 2008) - 3 items

■ **Values** (TIVI, Ten items Values inventory Sandy et al., 2016)- 10 items

■ **Social Desirability** (KSE-G, Nießen et al., 2019) – 6 items

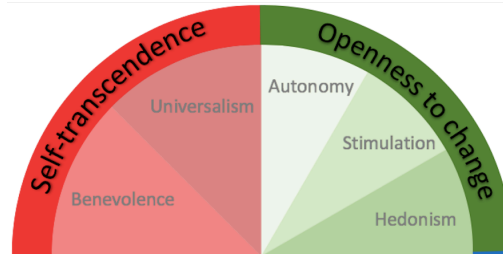


RESULTS

Self-Transcendence

Study 1 $B = 0.61$, 95% CI [0.42, 0.80] ✓

Study 2 $B = 0.19$, 95% CI [0.07, 0.31] ✓



Openness to change

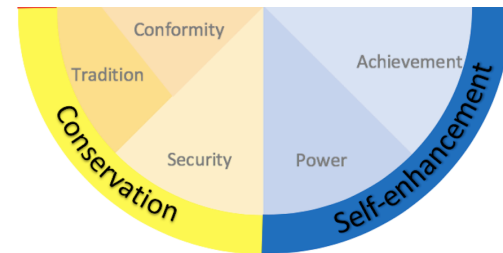
Study 1 $B = 0.19$, 95% CI [0.03, 0.35] ✓

Study 2 $B = 0.14$, 95% CI [0.04, 0.24] ✓

Conservation

Study 1 $B = -0.02$, 95% CI [-0.15, 0.11] ✗

Study 2 $B = -0.05$, 95% CI [-0.13, 0.02] ✗



Self-enhancement

Study 1 $B = -0.20$, 95% CI [-0.34, -0.07] ✓

Study 2 $B = -0.00$, 95% CI [-0.07, 0.07] ✗

Study 1 Status $B = -0.24$, 95% CI [-0.40, -0.08]

Study 2 Gender $B = 0.27$, 95% CI [0.09, 0.44]

Social Desirability (PQ+) $B = 0.13$, 95% CI [-0.00, 0.26]



CONCLUSION

Positive relationship

Equity – Well-being - Stimulation -
Change - Mastery- Control

Congruency between these
values and inclusive school

Mixed relationship

Success - Performance
Domination - Prestige

Inclusive school
= new challenges = threat

Shorter scales?

No relationship

Stability –
Statu-quo maintenance

Inclusive school
= changes = threat

Normative pressure?

■ Limits

- Correlational studies
- Shorter scales but ...
- Context?

■ Perspectives - Test for causality

- Values activation
- Personal values and system values : *taking the context into account*

