



HAL
open science

Sorafenib Plus Irinotecan Combination in Patients With RAS-mutated Metastatic Colorectal Cancer Refractory To Standard Combined Chemotherapies: A Multicenter, Randomized Phase 2 Trial (NEXIRI-2/PRODIGE 27)

Emmanuelle Samalin, Christelle de La Fouchardière, Simon Thèzenas, Valérie Boige, Hélène Senellart, Rosine Guimbaud, Julien Taïeb, Eric François, Marie-Pierre Galais, Astrid Lièvre, et al.

► To cite this version:

Emmanuelle Samalin, Christelle de La Fouchardière, Simon Thèzenas, Valérie Boige, Hélène Senellart, et al.. Sorafenib Plus Irinotecan Combination in Patients With RAS-mutated Metastatic Colorectal Cancer Refractory To Standard Combined Chemotherapies: A Multicenter, Randomized Phase 2 Trial (NEXIRI-2/PRODIGE 27). *Clinical Colorectal Cancer*, 2020, 10.1016/j.clcc.2020.04.008 . hal-02912931

HAL Id: hal-02912931

<https://hal.science/hal-02912931>

Submitted on 15 Dec 2022

HAL is a multi-disciplinary open access archive for the deposit and dissemination of scientific research documents, whether they are published or not. The documents may come from teaching and research institutions in France or abroad, or from public or private research centers.

L'archive ouverte pluridisciplinaire **HAL**, est destinée au dépôt et à la diffusion de documents scientifiques de niveau recherche, publiés ou non, émanant des établissements d'enseignement et de recherche français ou étrangers, des laboratoires publics ou privés.



Distributed under a Creative Commons Attribution - NonCommercial 4.0 International License

Sorafenib plus irinotecan combination in patients with

RAS-mutated metastatic colorectal cancer refractory to standard combined chemotherapies:

A multicenter, randomized phase 2 trial (NEXIRI-2/PRODIGE 27)

Emmanuelle Samalin (1, 2), Christelle de la Fouchardière (3), Simon Thézenas (4), Valérie Boige (5), Hélène Senellart (6), Rosine Guimbaud (7), Julien Taïeb (8), Eric François (9), Marie-Pierre Galais (10), Astrid Lièvre (11), Jean-François Seitz (12), Jean-Philippe Metges (13), Olivier Bouché (14), Florence Boissière-Michot (15), Evelyne Lopez-Crapez (15, 16), Frédéric Bibeau (16, 17), Alexandre Ho-Pun-Cheung (15, 16), Marc Ychou (1, 15), Antoine Adenis (18), Frédéric Di Fiore (19), Thibault Mazard (1, 16)

- 1- Medical oncology Département, Institut du Cancer de Montpellier (ICM), Univ. Montpellier, Montpellier, France
- 2- IGF, CNRS, INSERM, Univ. Montpellier, F-34094 Montpellier, France
- 3- Medical oncology Département, Centre Léon Bérard, Lyon, France
- 4- Biometrics Unit, Institut du Cancer de Montpellier (ICM), Univ. Montpellier, Montpellier, France
- 5- Medical oncology Département, Gustave Roussy, Villejuif, France
- 6- Medical oncology Département, Institut de Cancérologie de l'Ouest René Gauducheau, Saint Herblain, France
- 7- Medical Oncology Department, Centre Hospitalier Universitaire de Toulouse, Toulouse, France
- 8- Medical oncology Département, Sorbonne Paris Cité, Siric Carpem, Université Paris Descartes, AP-HP, HEGP, Paris, France
- 9- Medical oncology Département, Centre Antoine Lacassagne, Nice, France
- 10- Medical oncology Département, Centre François Baclesse, Caen, France
- 11- Medical oncology Département, Institut Curie, Saint Cloud, France
- 12- Medical oncology Département, Hôpital de La Timone, AP-HM, Marseille, France
- 13- Medical oncology Département, Centre Hospitalier Universitaire de Brest, Brest, France
- 14- Medical oncology Département, Centre Hospitalier Universitaire de Reims, Reims, France
- 15- Transnational Research Unit, Institut du Cancer de Montpellier (ICM), Univ. Montpellier, Montpellier, France
- 16- Institut régional du Cancer de Montpellier (IRCM), INSERM, Univ. Montpellier, ICM, Montpellier

17- Pathology Department, Institut du Cancer de Montpellier (ICM), Univ. Montpellier, Montpellier, France

18- Medical oncology Departement, Centre Oscar Lambret, Lille, France

19- Digestive oncology Unit, Department of Hepatogastroenterology, Rouen University Hospital, France

*Corresponding author:

Dr. Emmanuelle Samalin

Medical oncology Department

Institut Régional du Cancer de Montpellier (ICM)

208 Avenue des Apothicaires

34298 Montpellier Cedex, France

Tel: +33 4 67 61 31 36

e-mail: emmanuelle.samalin@icm.unicancer.fr

Part of this work was presented at the 2016 ASCO-GI and ASCO meetings, and at the 2016 ESMO meeting.

Running Title: NEXIRI in *RAS*-mt metastatic colorectal cancer

Highlights: The therapeutic options for *RAS*^{mt} metastatic colorectal cancer (mCRC) patients are limited compared to those for *RAS*^{wt} patients. 173 *RAS*^{mt} mCRC patients who had progressed after standard combined chemotherapies were randomized between NEXIRI (IRI+NEX) vs. Irinotecan (IRI) vs. NEX (Sorafenib). The 2-month non-progressive disease rate, median PFS and OS were greater with NEXIRI than with monotherapies suggesting a synergistic effect of the combination.

Abstract

Background: No treatment option was available for *RAS*-mutated (*RAS*mt) metastatic colorectal cancer (mCRC) patients who progress after standard combined chemotherapies at the time of the study. After promising results in phase II, the aim of the present NEXIRI-2/PRODIGE 27 trial was to assess the 2-month non-progression rate for sorafenib (NEX) plus irinotecan (IRI), *i.e.* NEXIRI, treatment.

Methods: *RAS*mt mCRC patients after failure of oxaliplatin, IRI, fluoropyrimidines and bevacizumab were randomized between NEXIRI (IRI 120-180mg/m² IV, D1=D15 plus oral NEX 400mg bid) *vs.* IRI (180mg/m²) *vs.* NEX. Primary endpoint was the 2-month non-progression rate. Secondary endpoints included progression-free and overall survival (PFS and OS), safety, and germline cyclin D1 (*CCND1*) rs9344 polymorphisms analyses.

Results: 173 patients were included, 59 in NEXIRI, 57 in IRI and 57 in NEX arms. The 2-month non-progression rate was 52.6% [95% CI: 39–66%], 21.4% [10–33%], and 19.3% [9–30%] for NEXIRI, IRI, and NEX. Median PFS was 3.6 [95% CI: 2–4.2], 1.7 [1.7–1.8], and 2 [1.8–2.3] months and the median OS was 7.2 [5.8–9.4], 6.3 [4.8–8], and 5.6 [3.9–7.7] months for NEXIRI, IRI, and NEX, respectively. For NEXIRI rs9344*CCND1* A/A genotype patients, OS was 19.6 months [95% CI: 4.8–NR]. Main grade 3 toxicities included neutropenia, febrile neutropenia, diarrhea, hand-foot syndrome and hypertension.

Conclusions: In *RAS*mt mCRC patients who progressed after standard combined chemotherapies, the results of 2-month non-progression rate and median PFS in the NEXIRI arm were in favor of an increase of the time before progression.

Key words: colorectal cancer, sorafenib, clinical trial, *RAS* mutated tumors, NEXIRI

Introduction

Colorectal cancer (CRC) is the third most common cancer type with over 1,800,000 new cases and about 883,000 deaths worldwide in 2018 according to the GLOBOCAN estimates[1]. Mortality is driven by the occurrence of metastases, which affect nearly half of CRC patients. Although some patients with metastatic CRC (mCRC) may be cured by surgery alone, most of them present with non-resectable metastases and are treated with various combinations of cytotoxic agents and/or targeted therapies [2]. The latter include fluorouracil, capecitabine, oxaliplatin, irinotecan (IRI), bevacizumab, aflibercept, cetuximab, and panitumumab [2]. Of note, patients with mCRC and tumors that express activating mutations in the *KRAS* exon 2 gene do not benefit from the use of cetuximab and panitumumab [3–6]. Now, these findings have been extended to less frequent mutations of the *RAS* family (also known as expanded *RAS* analysis) that also predict a lack of response to epidermal growth factor receptor inhibitors [7]. At the time this trial was designed, in 2011, there were no effective therapies for CRC patients with *RAS*-mutated (*RAS*mt) tumors who had failed standard combined chemotherapies and both regorafenib and trifluridine/tipiracil were not available.

The orally administered multikinase inhibitor sorafenib (NEX) inhibits tumor cell proliferation and tumor angiogenesis. It is a potent inhibitor of the mitogen-activated protein kinase pathway, either through inhibition of cell surface tyrosine kinases (e.g., VEGFR-2, VEGFR-3, PDGFR- β , c-KIT, FLT-3, and RET) or through the direct inhibition of the serine-threonine kinases Raf-1 and B-Raf [8,9]. It was anticipated that *RAS* mutations would have no negative impact on NEX-induced Raf inhibition because Raf functions downstream of the *RAS* protein.

Initial preclinical studies showed antitumor activity of NEX, either alone or combined with IRI in CRC cell lines, including *KRAS*mt [10,11]. We conducted a phase I/II study to define the recommended dose and assess the safety, and preliminary efficacy of the NEX/IRI combination (NEXIRI) in a series of 54 heavily pretreated *KRAS*mt mCRC patients [12]. Oral NEX 400 mg twice daily plus intravenous IRI 180 mg/m² was recommended as the dose for phase 2. The main grade 3 adverse events (AE) were as follows: diarrhea (37%), neutropenia (18%), hand-foot syndrome (13%), and grade 4 neutropenia (17%). Disease control was promising, with a rate of 64.9% (95% CI: 55–77%). Median progression-free (PFS)

and overall survival (OS) were 3.7 months (95% CI: 3.2–4.7) and 8.7 months (95% CI: 4.8–9.7). Interestingly, the germline cyclin D1 (*CCND1*) rs9344 A/A polymorphism was found as a predictor of disease control[12].

These results taken together, and regarding the lack of alternative treatment at the time of the study design, we initiated a multicenter randomized phase 2 study to evaluate the NEXIRI combination over the single-agents NEX and irinotecan for mCRC patients with (*K*)RASmt tumors who had failed standard treatments at the time.

Patients and Methods

The NEXIRI-2/PRODIGE 27 trial was designed to estimate the 2-month non-progression rate for NEXIRI in patients with (*K*)RASmt mCRC who had progressed under all approved drugs at the time of the study design (2011). IRI and NEX arms served as internal controls, without formal comparison intent. Secondary objectives included disease control and response rates, toxicity, PFS, OS, and quality of life. Exploratory analyses included patient genotyping and tumor immunochemistry for the study of cyclin-D1 polymorphisms and expression compared with the treatment response. The protocol was approved by the local ethics committee and registered on clinical.trials.gov (NCT01715441). The study was conducted in accordance with the Declaration of Helsinki and the Good Clinical Practice guidelines.

Patients

Main eligible criteria were histologically confirmed CRC with measurable unresectable metastases and documented progressive disease after failure of all approved drugs (oxaliplatin, IRI, fluoropyrimidines, and bevacizumab) at the time of the study, a KRAS (then extended RAS from November 2013) mutation and a World Health Organization performance status ≤ 1 , age ≥ 18 years, life expectancy > 3 months, and adequate organ, hematologic and renal functions. Written informed consent was obtained from each patient before trial entry.

Treatment

Randomization was performed (1-to-1-to-1 ratio), with stratification according to the center. In the NEXIRI arm, patients received a 400mg fixed-dose of oral NEX twice daily, combined with intravenous IRI 120mg/m² over 90min every 2 weeks (cycle 1); doses were increased to 150mg/m² (cycle 2) and 180mg/m² (cycle 3) if patients had no diarrhea >grade 1 and no other toxicity >grade 2. In the IRI only arm, patients received intravenous IRI 180 mg/m² every 2 weeks; in the NEX only arm, they received oral NEX 400mg twice daily. In the monotherapy arms, a cross over to NEXIRI was planned at the time of disease progression.

Cyclin D1 analyses

Germline DNA was extracted from whole blood samples using a QIAamp DNA blood maxi kit (Qiagen, Courtaboeuf, France). The rs9344 (c.723G>A, p. Pro241=) single nucleotide polymorphism (SNP) in the *CCND1* gene that had been demonstrated to be potentially related to treatment responses was analyzed with a method previously described [13,14]. Cyclin D1 protein expression was studied by immunohistochemistry using the rabbit monoclonal antibody EP12 (Dako, Glostrup, Denmark).

Statistical considerations

The primary endpoint was the 2-month non-progression rate (RECIST v1.1). A single-stage Fleming design with $\alpha=5\%$ (unilateral) and $\beta=10\%$ was planned: H0: $p \leq p_0$ with $p_0=50\%$ and H1: $p \geq p_1$ with $p_1=70\%$ (based on an exact binomial approach). It was necessary to include a total of 159 patients, 53 in each arm. A chest-abdomen-pelvis CT-scan was performed every 8 weeks. Tumor responses were confirmed 4 weeks after initial reporting. All CT-scans were reviewed by an independent radiologist panel. Toxicities and quality of life were assessed according to the NCI-CTCAE v4.0 and the EORTC QLQ-C30 questionnaire. Analyses were performed in per-protocol and intention-to-treat (ITT) populations. Survival durations were defined from the date of randomization and estimates calculated using the Kaplan–Meier method. *P*-values were two-sided and significance was set at $P<0.05$. All statistical analyses were performed using STATA.11 software (College Station, TX, USA).

Results

Patients

From September 2012 to July 2014, 173 patients from 17 centers were randomized and represented in the intent-to-treat population. A total of 59 patients were allocated to the NEXIRI arm, 57 to the IRI arm, and 57 to the NEX arm (Figure 1). At the time of tumor progression, 69 patients crossed-over to NEXIRI, including 42/69 and 27/69 patients from the IRI and NEX arms, respectively. The modified ITT population (n=170) included patients who actually received at least one cycle of their allocated treatment. The per protocol population (n=160) included the modified ITT population without major deviations (n=10). The three treatment-arms were comparable for demographic and baseline characteristics (Table 1).

Treatment

Patients received a median number of treatment cycles of 3 (1–9), 2 (1–7), and 2 (1–8) in the NEXIRI, IRI, and NEX arms, respectively. Patients who crossed-over to NEXIRI received a median number of treatment cycles of 2 (1–8). More than 50% of patients underwent at least one dose-reduction at the time they received NEX alone or in combination. Dose-reductions were also observed with IRI, either in the NEXIRI (38 (76%)) or IRI (11 (19.6%)) arms. The median IRI relative dose-intensity was 101.8% (51–108%) in the IRI arm and 76.3% (48–103%) in NEXIRI. The median NEX relative dose intensity was 74.6% (21–118%) in the NEXIRI arm and 77.7% (26–101) in the NEX arm. Patients who crossed-over to NEXIRI had a median IRI relative dose-intensity of 70.0% (35–104%) and a NEX relative dose-intensity of 66.3% (7–112%).

Tumor response

Based on a central review, the 2-month non-progression rate was 30/57 (52.6%, 95% CI: 39–66%), 12/56 (21.4%, 95% CI: 10–33%), and 11/57 (19.3%, 95% CI: 9–30%) in the NEXIRI, IRI, and NEX arms, respectively. Disease control was reported in 30/57 patients (50.9%; 95% CI: 38–64%) including 2 partial responses in NEXIRI, in 13/56 patients (23.2%; 95% CI: 12–34%) including one partial response in the IRI arm, and in 11/57 patients (19.3%; 95% CI: 9–30%) in the NEX arm. Interestingly, disease control was reported in 29/69 patients (42.0%; 95% CI: 30–54%) including 1 partial response in patients who crossed-over to NEXIRI at the time of their first tumor progression (Table 2).

Progression-free and overall survival

Median follow-up was 17.5 months (95% CI: 14–22). Median PFS was 3.6 months (95% CI: 2.2–4.9), 1.9 months (95% CI: 1.7–2.1), and 2.1 months (95% CI: 1.9–2.5) in the NEXIRI, IRI, and NEX arms, respectively (Figure 2). In the ITT population, median OS was 7.2 months (95% CI: 6–9), 6.3 months (95% CI: 5–8), and 5.6 months (95% CI: 4–8) in the NEXIRI, IRI, and NEX arms, respectively. OS of patients treated with NEXIRI as first intent or after cross-over (7.9 months [95% CI: 7.1–8.7]) were similar.

Safety

Focusing on NEXIRI, the most frequently reported AEs (all grades) per patient (modified ITT population, n=57) were as follows: diarrhea (93%), fatigue (71%), anemia (70%), appetite loss (53%), vomiting (46%), hand-foot skin reaction (42%), neutropenia (44%), stomatitis (33%), and rash (30%). Maximal severe (grades 3 and 4) AEs per patient were found in 48/57 (84.2%), 33/56 (58.9%), and 48/57 (84.2%) patients in the NEXIRI, IRI, and NEX arms, respectively (Table 3). One death was considered possibly related to the study treatment in the NEX arm (pulmonary embolism).

Quality of life

Baseline quality of life (global health score) was similar in the three treatment arms, and did not change at 2 months.

Patient genotyping

130 blood samples were collected. For the rs9344 *CCND1* polymorphism, the frequency of the different genotypes (A/A, A/G and G/G) alleles was not significantly different between the 3 arms. Notably, 33 patients (25.4%) were homozygous for the A allele (A/A), 27 patients (20.8%) for the G allele (G/G), and 70 (53.8%) were heterozygous (A/G). Genotype frequencies did not deviate from the Hardy–Weinberg equilibrium in the NEXIRI, IRI and NEX arms. For NEXIRI, a significant correlation was found between the rs9344 *CCND1* polymorphism and tumor responses, and improved median survival was reported in these patients compared to patients with other genotypes. In patients with this

rs9344*CCND1* A/A genotype treated with NEXIRI, the median OS was 19.6 months compared to 7 months in patients exhibiting other genotypes (Table 4).

Protein expression in tumor tissues

Formalin-fixed paraffin-embedded tissues were available for 111 patients. Cyclin D1 expression was not associated with treatment efficacy, toxicity, or patient outcome (data not shown). The rs9344 *CCND1* polymorphism was not associated with any specific pattern of cyclin D1 expression, either in terms of location (nuclear and/or cytoplasmic) or level of expression.

Discussion

In this population of mCRC patients with (*K*)*RAS*-mt tumors refractory to standard combined chemotherapies at the time of the study design (2011), the clinical results (toxicity, disease control rate, PFS and OS) of the NEXIRI combination are in line with those previously published [12] in our phase I/II study (overview of the main clinical results in Suppl. Table 1). Disease control exceeded 50%, median PFS was 3.7 months, and median OS ranged from 7 to 8 months with an acceptable toxicity (17.5% severe hand-foot syndrome, 17.6% severe neutropenia, 26% severe diarrhea). The latter rate is lower than the one (35%) we reported in the NEXIRI-1 phase I/II trial [12], probably related to the modification of the IRI dose administered in the NEXIRI2 regimen: IRI was started at 120 mg/m², and then increased in cases of good tolerance (no diarrhea >grade 1 and no other toxicity > grade 2) or decreased in cases of toxicity (diarrhea >grade 1 or other toxicity > grade 2). We acknowledge that NEXIRI-2 was not designed as a comparative study. However, it appears that NEXIRI provides numerically better 2-month non-progression rate, disease control rate, and median PFS than IRI or NEX without hampering quality of life. There is no apparent difference in OS across the different treatments arms of this NEXIRI-2 trial, but 40% of patients from the NEX and IRI arms crossed over to NEXIRI. It should be noted that the OS curve of patients who crossed over to NEXIRI appeared to be similar to that of patients who were primarily randomized in the NEXIRI arm. These features reinforce our understanding that NEXIRI has an impact on OS over NEX or IRI in patients with (*K*)*RAS*-mutated tumors that are refractory to standard combined chemotherapies at that time.

Interestingly, our ancillary study on rs9344 CCND1 polymorphisms confirms our previous findings, *i.e.* patients treated with NEXIRI who harbored the A/A variant were more likely to be disease-controlled than patients with other genotypes. Moreover, these A/A individuals had numerically better median PFS (5.3 vs. 3.1 months) and median OS (19.6 vs. 7 months) than patients with other genotypes when treated with NEXIRI. To a far lesser extent this better outcome with the A/A variant also applies to patients treated with IRI or NEX. In our study, rs9344 genotype was unrelated to the level of expression and localization of cyclin D1 protein. This common polymorphism (24-30% in the Caucasian population) is known to modulate the splicing of cyclin CCND1 to produce 2 transcripts (mRNAa and mRNA_b). The A allele preferentially encodes a truncated mRNA (mRNA_b) with an altered C-terminal domain, lacking the exon 5 coding for a protein-destabilizing (PEST) destruction box [14]. This transcript encodes a more stable CCND1 protein that may result in a higher concentration of CCND1 within the cell. Nevertheless, both transcripts are presents with all genotypes [15]. This disconnection between genotype and protein expression may be also associated to the nature of immunohistochemistry that is a semi quantitative technology and cannot reveal subtle expression level changes. In this way, quantification of each mRNA transcript by RT-qPCR may be a better alternative. Moreover, the antibody selected for the present study is described as recognizing preferentially proteins derived from the G allele whereas antibodies directed against a common region to both variant proteins will be more adequate. In addition, the absence of relation between the A/A genotype and CCND1 expression level in colorectal cancers as previously been reported [16]. Finally, one may not exclude the hypothesis of a functional alteration in cyclin D1 linked to the studied SNP that is not detected in IHC expression. Similarly, Dahan *et al.* previously reported a better response and longer median time to progression for patients harboring the rs9344CCND1 A/A genotype in a series of mCRC patients treated with a cetuximab-irinotecan combination [17]. The rs9344 CCND1 polymorphisms, especially the A/A variant, may be considered as a marker of favorable outcomes in mCRC patients treated with anti-proliferative agents and warrants further validation.

Despite these promising results, NEXIRI-2 did not reach its primary objective. As per protocol, NEXIRI-2 could have been a positive trial if 31 patients (instead of 30) from the NEXIRI arm had been found non-progressive at 2 months. Unfortunately, our primary criterion, the 2-month non-progression

rate, was too stringently defined with no room to accept more or less than one week around the 2-month non-progression rate point assessment. The NEXIRI-2 results should be interpreted carefully because it has other limitations such as its limited size and non-comparative design.

Since we ran this NEXIRI-2 trial, two new compounds, regorafenib and trifluridine/tipiracil, have become available as salvage therapies for mCRC patients who failed standard treatments (Supplementary Table 1). In brief, regorafenib – an oral multikinase agent that inhibits angiogenic, stromal and oncogenic receptor tyrosine kinases (including VEGFR1/3, PDGFR-b, FGFR-1, TIE-2, c-KIT, RET, RAF1 and B-RAF) [18] – has been shown to increase OS over placebo in patients with mCRC who progressed on standard therapies [19]. Furthermore, the clinical benefit of regorafenib in terms of OS and PFS was of the same magnitude in patients with *KRAS*^{mt} or *KRAS*-wild-type tumors [19]. Although it is hazardous to compare results across different studies, it was observed that NEXIRI provides numerically better disease control, median PFS, and median OS than regorafenib or placebo in the CORRECT trial [20]. This is indeed remarkable as patients from NEXIRI-2 were all (*K*)*RAS*^{mt} (*vs.* 54%) and appeared to be more heavily pretreated than patients from the CORRECT study. Subsequently, a significant OS and PFS benefit over placebo was reported with the cytotoxic agent trifluridine/tipiracil, a combination of the fluoropyrimidin trifluridine to a thymidine phosphorylase inhibitor [21]. This survival improvement was observed in both *KRAS*^{mt} and *KRAS*^{wt} tumors [21].

This NEXIRI-2 trial provides additional evidence that the NEXIRI combination can delay disease progression in mCRC patients with *RAS*^{mt} tumors who progress after all approved standard combined chemotherapies at the time the study was designed. The NEXIRI combination does not pretend to qualify as a new standard, accounting with the newly-developed oral therapies such as regorafenib or trifluridine/tipiracil. However, our trial results open perspectives of new combined treatments, *i.e.* chemotherapies and newly approved oral tyrosine kinase inhibitors such as regorafenib, in mCRC patients, especially in the rs9344*CCND1* A/A subgroup of patients.

Additional Information

Ethics approval and consent to participate

The study was approved by an ethics committee (Comité de Protection des Personnes Sud Méditerranée III, EudraCT 2012-000644-94), institutional review board and the national regulatory authorities. It was conducted in accordance with the Good Clinical Practices and the Declaration of Helsinki. Written informed consent was obtained from each patient before trial entry.

Availability of data and material

The dataset supporting the conclusions of this article is available upon reasonable request and under specific contract at the Biometrics Unit of the Montpellier Cancer Institute (ICM).

Conflict of interest

The following authors have declared conflicts of interest for honoraria (participation to boards, experts, advisory role or speaker), research funding or travel and meeting expenses: ES: Lilly, Amgen, Bayer, Ipsen, Sanofi, Roche and Merck; CF: Bayer; VB: Bayer, Merck Sereno, MSD, Roche, Sanofi, Ipsen, Amgen. RG: Roche, Ipsen, Novartis, Merck, Bayer, Servier, Keocyt, MSD; JT: Roche, Amgen, Msd, Merck, Sanofi, Servier, Shire, Lilly, Sirtex; EF: Roche, Merck, Amgen, Sanofi, Servier, Bayer; MPG: Amgen, Roche, Servier, Sanofi, Merck; AL: Bayer, Merck, Amgen, Roche, Servier; OB: Roche, Amgen, Merck, Bayer, Pierre Fabre, Servier, Novartis, Lilly; FB: Amgen, BMS, MSD, Merck, Servier, Sanofi; MY: Amgen, Celgene, Roche, Bayer, Lilly; AA: Bayer SA; FDF: Roche, Amgen, Sanofi, Merck, Bayer, Servier, Lilly; TM: Amgen, Sanofi, Bayer. ST, HS, FBM, ELC, AHPC, JFS and JPM have declared no conflict of interest.

Role of the funding source

This academic study was supported in part by Bayer HealthCare SAS, France. The sponsor did not take part in study design, collection, analysis and interpretation of data and writing of the present article.

Acknowledgments

We are thankful for the contributions of patients, their families, and other participating coinvestigators: Dr. Marianne Fonck (Institut Bergonié, Bordeaux, France), Dr. Thomas Aparicio (Bobigny, France), and Dr. Pascal Artru (Hôpital Privé Mermoz, Lyon, France). We would also like to thank Sophie Gourgou (Biometrics Unit, Institut du Cancer de Montpellier, ICM, Montpellier, France) for her participation in the conception and design of the study, Dr. Sylvain Poujol (Institut du Cancer de Montpellier, ICM, Montpellier, France) for the pharmacokinetic studies (data not shown), Patrick Chalbos for project management, Dr. Hélène de Forges who drafted part of this manuscript, and Dr. Jean-Pierre Bleuse who provided administrative support. This research was supported by a SIRIC Montpellier Cancer Grant: INCa_Inserm_DGOS_12553.

References

- [1] Bray F, Ferlay J, Soerjomataram I, Siegel RL, Torre LA, Jemal A. Global cancer statistics 2018: GLOBOCAN estimates of incidence and mortality worldwide for 36 cancers in 185 countries. *CA Cancer J Clin* 2018;68:394–424. doi:10.3322/caac.21492.
- [2] Van Cutsem E, Cervantes A, Adam R, Sobrero A, Van Krieken JH, Aderka D, et al. ESMO consensus guidelines for the management of patients with metastatic colorectal cancer. *Ann Oncol* 2016;27:1386–422. doi:10.1093/annonc/mdw235.
- [3] Amado RG, Wolf M, Peeters M, Van Cutsem E, Siena S, Freeman DJ, et al. Wild-type KRAS is required for panitumumab efficacy in patients with metastatic colorectal cancer. *J Clin Oncol* 2008;26:1626–34. doi:10.1200/JCO.2007.14.7116.
- [4] Karapetis CS, Khambata-Ford S, Jonker DJ, O’Callaghan CJ, Tu D, Tebbutt NC, et al. K-ras mutations and benefit from cetuximab in advanced colorectal cancer. *N Engl J Med* 2008;359:1757–65. doi:10.1056/NEJMoa0804385.
- [5] Lièvre A, Bachet J-B, Le Corre D, Boige V, Landi B, Emile J-F, et al. KRAS mutation status is predictive of response to cetuximab therapy in colorectal cancer. *Cancer Res* 2006;66:3992–5. doi:10.1158/0008-5472.CAN-06-0191.

- [6] Van Cutsem E, Köhne C-H, Láng I, Folprecht G, Nowacki MP, Cascinu S, et al. Cetuximab plus irinotecan, fluorouracil, and leucovorin as first-line treatment for metastatic colorectal cancer: updated analysis of overall survival according to tumor KRAS and BRAF mutation status. *J Clin Oncol* 2011;29:2011–9. doi:10.1200/JCO.2010.33.5091.
- [7] Sorich MJ, Wiese MD, Rowland A, Kichenadasse G, McKinnon RA, Karapetis CS. Extended RAS mutations and anti-EGFR monoclonal antibody survival benefit in metastatic colorectal cancer: a meta-analysis of randomized, controlled trials. *Ann Oncol* 2015;26:13–21. doi:10.1093/annonc/mdu378.
- [8] Carlomagno F, Anaganti S, Guida T, Salvatore G, Troncone G, Wilhelm SM, et al. BAY 43-9006 inhibition of oncogenic RET mutants. *J Natl Cancer Inst* 2006;98:326–34. doi:10.1093/jnci/djj069.
- [9] Wilhelm SM, Carter C, Tang L, Wilkie D, McNabola A, Rong H, et al. BAY 43-9006 exhibits broad spectrum oral antitumor activity and targets the RAF/MEK/ERK pathway and receptor tyrosine kinases involved in tumor progression and angiogenesis. *Cancer Res* 2004;64:7099–109. doi:10.1158/0008-5472.CAN-04-1443.
- [10] Mross K, Steinbild S, Baas F, Gmehling D, Radtke M, Voliotis D, et al. Results from an in vitro and a clinical/pharmacological phase I study with the combination irinotecan and sorafenib. *Eur J Cancer* 2007;43:55–63. doi:10.1016/j.ejca.2006.08.032.
- [11] Mazard T, Causse A, Simony J, Leconet W, Vezzio-Vie N, Torro A, et al. Sorafenib Overcomes Irinotecan Resistance in Colorectal Cancer by Inhibiting the ABCG2 Drug-Efflux Pump. *Mol Cancer Ther* 2013;12:2121–34. doi:10.1158/1535-7163.MCT-12-0966.
- [12] Samalin E, Bouché O, Thézenas S, Francois E, Adenis A, Bennouna J, et al. Sorafenib and irinotecan (NEXIRI) as second- or later-line treatment for patients with metastatic colorectal cancer and KRAS-mutated tumours: a multicentre Phase I/II trial. *Br J Cancer* 2014;110:1148–54. doi:10.1038/bjc.2013.813.
- [13] Ho-Pun-Cheung A, Assenat E, Thezenas S, Bibeau F, Rouanet P, Azria D, et al. Cyclin D1 gene G870A polymorphism predicts response to neoadjuvant radiotherapy and prognosis in rectal cancer. *Int J Radiat Oncol Biol Phys* 2007;68:1094–101. doi:10.1016/j.ijrobp.2007.01.022.

- [14] Knudsen KE, Diehl JA, Haiman CA, Knudsen ES. Cyclin D1: polymorphism, aberrant splicing and cancer risk. *Oncogene* 2006;25:1620–8. doi:10.1038/sj.onc.1209371.
- [15] Sawa H, Ohshima TA, Ukita H, Murakami H, Chiba Y, Kamada H, et al. Alternatively spliced forms of cyclin D1 modulate entry into the cell cycle in an inverse manner. *Oncogene* 1998; 16:1701-12. doi: 10.1038/sj.onc.1201691.
- [16] McKay JA, Douglas JJ, Ross VG, Curran S, Murray GI, Cassidy J, et al. Cyclin D1 protein expression and gene polymorphism in colorectal cancer. Aberdeen Colorectal Initiative. *Int J Cancer*. 2000; 88:77-81. doi: 10.1002/1097-0215(20001001)88.
- [17] Dahan L, Norguet E, Etienne-Grimaldi M-C, Formento J-L, Gasmi M, Nanni I, et al. Pharmacogenetic profiling and cetuximab outcome in patients with advanced colorectal cancer. *BMC Cancer* 2011;11:496. doi:10.1186/1471-2407-11-496.
- [18] Mross K, Frost A, Steinbild S, Hedbom S, Büchert M, Fasol U, et al. A phase I dose-escalation study of regorafenib (BAY 73-4506), an inhibitor of oncogenic, angiogenic, and stromal kinases, in patients with advanced solid tumors. *Clin Cancer Res* 2012;18:2658–67. doi:10.1158/1078-0432.CCR-11-1900.
- [19] Grothey A, Van Cutsem E, Sobrero A, Siena S, Falcone A, Ychou M, et al. Regorafenib monotherapy for previously treated metastatic colorectal cancer (CORRECT): an international, multicentre, randomised, placebo-controlled, phase 3 trial. *Lancet* 2013;381:303–12. doi:10.1016/S0140-6736(12)61900-X.
- [20] Tabernero J, Lenz H-J, Siena S, Sobrero A, Falcone A, Ychou M, et al. Analysis of circulating DNA and protein biomarkers to predict the clinical activity of regorafenib and assess prognosis in patients with metastatic colorectal cancer: a retrospective, exploratory analysis of the CORRECT trial. *Lancet Oncol* 2015;16:937–48. doi:10.1016/S1470-2045(15)00138-2.
- [21] Mayer RJ, Van Cutsem E, Falcone A, Yoshino T, Garcia-Carbonero R, Mizunuma N, et al. Randomized trial of TAS-102 for refractory metastatic colorectal cancer. *N Engl J Med* 2015;372:1909–19. doi:10.1056/NEJMoa1414325.

Tables and figures list

Table 1: Baseline characteristics of patients.

Table 2: Two-month non-progression rate (modified intent-to-treat analysis) by treatment arms. Non-evaluable (NE) patients were analyzed as treatment failures.

Table 3: Grade 3–4 adverse events (AEs) by treatment arms.

Table 4: Two-month non-progressive disease rate, median progression-free survival (PFS), and median overall survival (OS) by treatment arms and *CCND1* rs9344 genotypes.

Figure 1: Study flow chart.

Figure 2: Progression-free (PFS, A) and overall survival (OS, B) data for patients who received NEXIRI *versus* those who received IRI or NEX.

Supplementary table

Supp. Table 1: Sorafenib, sorafenib plus irinotecan, regorafenib, and TAS-102 in mCRC tumors refractory to standard therapies: overview of the main clinical results.

Figure 1: Study flow chart.

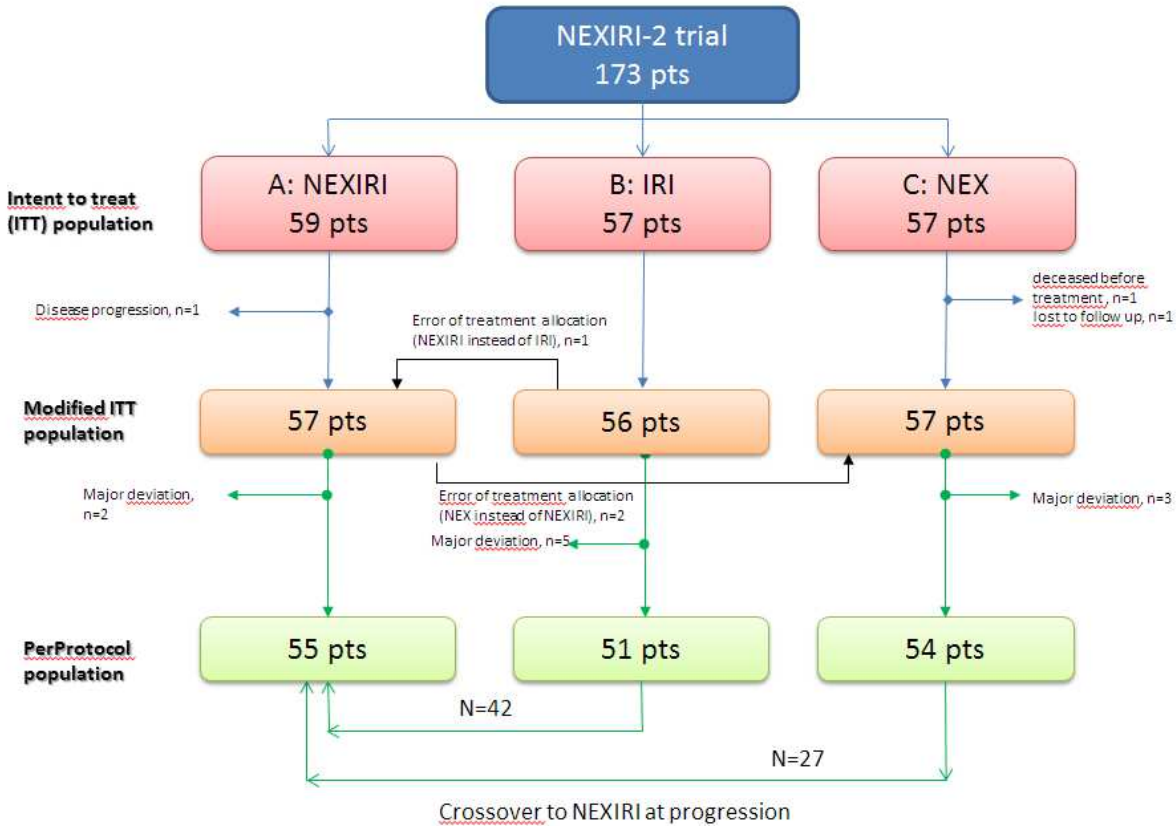
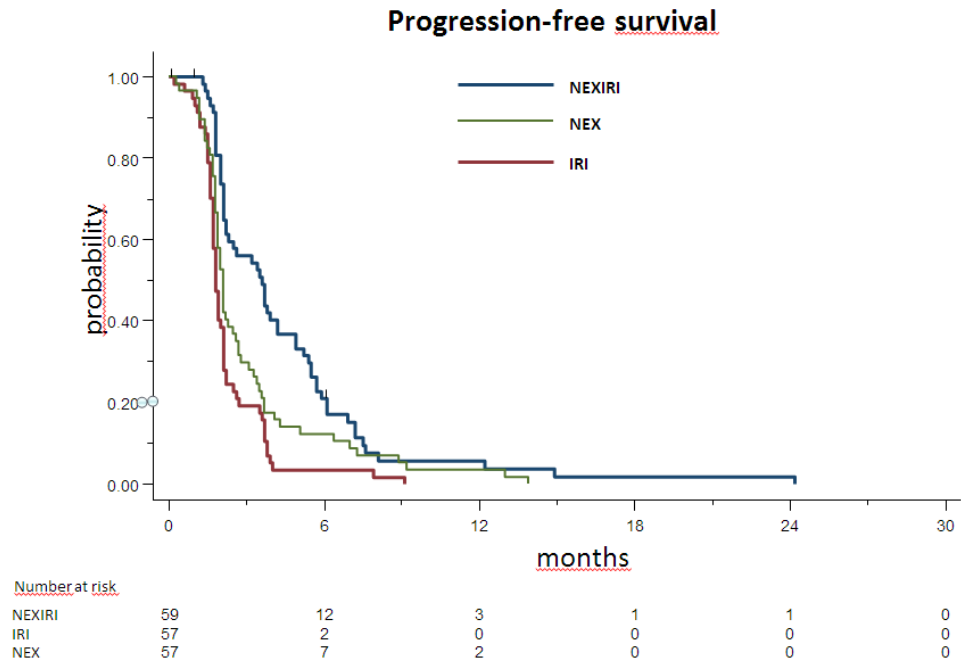


Figure 2: Progression-free (PFS, A) and overall survival (OS, B) data for patients who received NEXIRI *versus* those who received IRI or NEX.

A



B

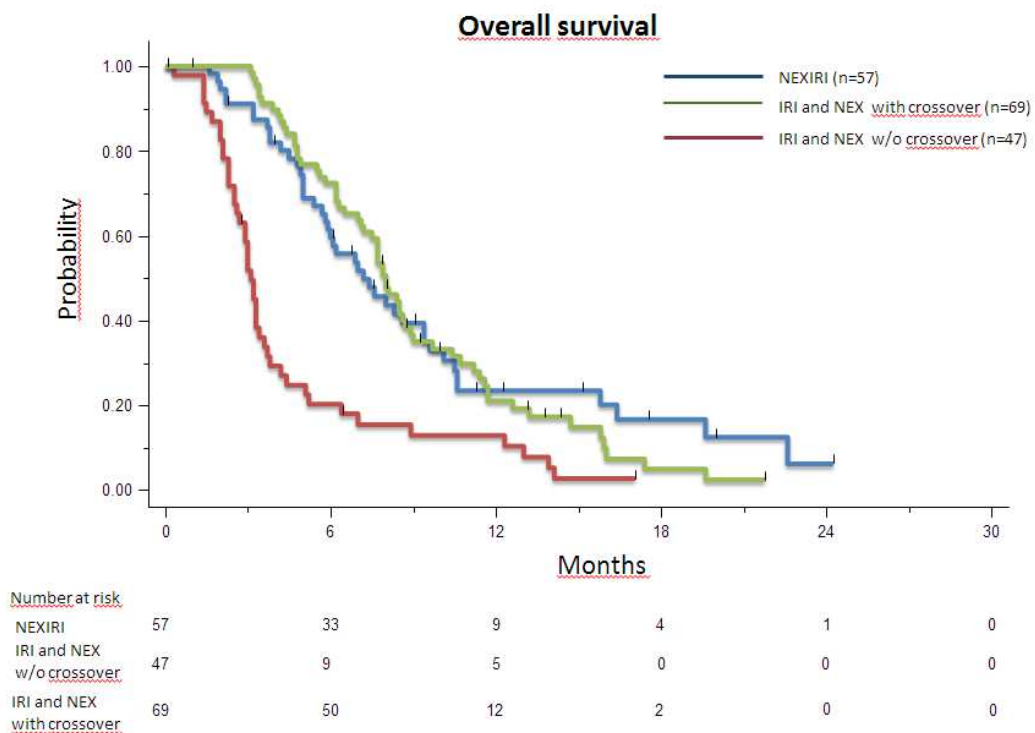


Table 1: Baseline characteristics of patients.

	NEXIRI n=59	IRI n=57	NEX n=57
Age (years) Median (range)	63.0 (35–81)	62.0 (35–77)	60.0 (31–82)
Gender Male / Female	35 / 24	31 / 26	34 / 23
WHO Performance status, n (%)			
0	26 (44.8)	18 (32.1)	21 (36.8)
1	32 (55.2)	37 (66.1)	35 (61.4)
2	0	1 (1.8)	1 (1.8)
<i>Missing</i>	<i>1</i>	<i>1</i>	<i>0</i>
Primary tumor localization, n (%)			
Left colon	34 (57.6)	23 (59.6)	26 (66.7)
Right colon	25 (42.4)	23 (40.4)	19 (33.3)
Metastases, n (%) Synchronous	40 (67.8)	36 (63.2)	40 (70.2)
Metastatic sites, n (%)			
Liver	48 (81.4)	43 (75.4)	43 (75.4)
Lung	23 (39.0)	19 (33.3)	19 (33.3)
Nodes	6 (10.2)	5 (8.8)	8 (14.0)
Others	7 (11.9)	8 (14.1)	10 (17.5)
Liver-limited disease	27 (45.8)	30 (53.6)	25 (43.9)
Number of metastatic sites			
1	31 (52.5)	34 (59.6)	33 (57.9)
> 1	28 (47.5)	23 (40.4)	24 (42.1)
Previous Surgery for primary, n (%)	49 (86.0)	50 (89.3)	48 (84.2)
Previous Chemotherapy (CT)			
Adjuvant CT, n (%)	29 (49.2)	29 (50.9)	27 (47.4)
Palliative CT, n (%)	55 (93.2)	51 (89.5)	52 (91.2)
Number of palliative CT lines, n (%)			
1	8 (14.5)	8 (15.7)	4 (7.7)
2	28 (50.9)	19 (37.3)	23 (44.2)
3	8 (14.5)	12 (23.5)	12 (23.1)
≥ 4	9 (16.3)	12 (23.5)	13 (25.0)
CT received, n (%)			
Fluorouracil	59 (100.0)	57 (100)	57 (100)
Oxaliplatin	59 (100.0)	57 (100)	57 (100)
Irinotecan	58 (98.3)	57 (100)	57 (100)
Bevacizumab	55 (93.2)	52 (91.2)	55 (96.5)
Ras mutation location, n			
Kras	50	51	51
Exon 2	49	50	49
Exon 3	0	1	2
Exon 4	1	0	0
NRAS	2	1	0
Exon 2	1	1	0
Exon 3	1	0	0
Location not done	7	5	6

Table 2: Two-month non-progression rate (modified intent-to-treat analysis) by treatment arm. Non-evaluable (NE) patients were analyzed as treatment failures.

	NEXIRI N=57	IRI N=56	NEX N=57
2-month response status			
Non-evaluable	6	4	8
Progressive disease (PD)	21	40	38
Stable disease	28	11	11
Partial response	2	1	0
2-month non-PD status (<i>i.e.</i> success to treatment)	30	12	11
2-month non-PD rate 95% CI	52.6% 39.7–65.6%	21.4% 10.7–32.2%	19.3% 9.1–29.6%

Table 3: Grade 3–4 adverse events (AEs) by treatment arm.

Toxicities, n (%)	NEXIRI n=57	IRI n=56	NEX n=57	p-value
Gr. 3–4 AEs of any kind	48/57 (84.2%)	33/56 (58.9%)	48/57 (84.2%)	0.001
Gr. 3–4 gastrointestinal AEs	20 (35.1%)	7 (12.5%)	13 (22.8%)	0.004
Diarrhea (gr. 3)	15 (26.3%)	4 (7.1%)	4 (7.0%)	< 0.001
Nausea (gr.3)	2 (3.5%)	0	1 (1.8%)	0.036
Vomiting (gr. 3 and gr.4)	4 (7.0%)	1 (1.8%)	1 (1.8%)	ns
Mucositis/Stomatitis (gr. 3)	0	1 (1.8%)	3 (5.3%)	ns
Anorexia (gr. 3)	3 (5.3%)	3 (5.4%)	5 (8.8%)	ns
Gr. 3 cutaneous AEs	10 (17.5%)	0	14 (24.6%)	< 0.001
Hand-foot skin reaction	10 (17.5%)	0	9 (15.8%)	< 0.001
Rash	1 (1.8%)	0	2 (3.5%)	0.002
Gr. 3-4 hematological AEs	11 (19.3%)	4 (7.3%)	0	0.006
Neutropenia				
Gr. 3	9 (15.8%)	3 (5.4%)	0	0.004
Gr. 4	1 (1.8%)	0	0	
Febrile neutropenia (gr. 3)	3 (5.3%)	0	0	0.044
Anemia (gr. 3)	1 (1.8%)	2 (3.6%)	0	
Thrombopenia (gr. 3)	1 (1.8%)	1 (1.8%)	0	

Table 4: Two-month non-progressive disease rate, median progression-free survival (PFS), and median overall survival (OS) by treatment arms and CCND1 rs9344 genotypes.

CCND1 rs9344 genotypes	NEXIRI n=45		IRI n=45		NEX n=40		All patients n=130	
	A/A genotype n=12	Other genotypes n=33	A/A genotype n=10	Other genotypes n=35	A/A genotype n=11	Other genotypes n=29	A/A genotype n=33	Other genotypes n=97
2-month non-progressive disease rate (%)	11/12 (91.5%)	15/33 (45.5%)	0/10	10/35 (28.6%)	0/11	8/29 (27.6%)	11/33 (33.3%)	31/97 (32%)
Median PFS (months) 95% CI	5.3 1.6–5.7	3.1 1.9–4.9	1.7 0.8–2.0	1.7 1.6–1.8	1.9 1.6–3.9	1.9 1.7–2.1	2.3 1.8–3.9	1.9 1.8–2.1
Median OS (months) 95% CI	19.6 4.8–NR	7 5.0–9.4	9 1.4–11.7	6.2 3.8–7.7	8.1 3.0–13.9	4.4 3.6–7.5	10.5 5.4–12.6	5.8 4.8–7.4

PFS: Progression-free survival; OS: Overall survival; 95% CI: 95% Confidence Interval; NR: Non-reported.