



HAL
open science

3D rock fabric analysis using micro-tomography: An introduction to the open-source TomoFab MATLAB code

Benoit Petri, Bjarne S.G. Almqvist, Mattia Pistone

► **To cite this version:**

Benoit Petri, Bjarne S.G. Almqvist, Mattia Pistone. 3D rock fabric analysis using micro-tomography: An introduction to the open-source TomoFab MATLAB code. *Computers & Geosciences*, 2020, 138, pp.104444. 10.1016/j.cageo.2020.104444 . hal-02912110

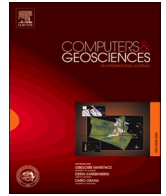
HAL Id: hal-02912110

<https://hal.science/hal-02912110>

Submitted on 5 Aug 2020

HAL is a multi-disciplinary open access archive for the deposit and dissemination of scientific research documents, whether they are published or not. The documents may come from teaching and research institutions in France or abroad, or from public or private research centers.

L'archive ouverte pluridisciplinaire **HAL**, est destinée au dépôt et à la diffusion de documents scientifiques de niveau recherche, publiés ou non, émanant des établissements d'enseignement et de recherche français ou étrangers, des laboratoires publics ou privés.



3D rock fabric analysis using micro-tomography: An introduction to the open-source TomoFab MATLAB code

Benoît Petri^{a,b,1,*}, Bjarne S.G. Almqvist^{c,2}, Mattia Pistone^{a,d,3}

^a Institute of Earth Sciences, University of Lausanne, Géopolis, 1015, Lausanne, Switzerland

^b Université de Strasbourg, CNRS, IPGS UMR 7516, F-67000, Strasbourg, France

^c Department of Earth Sciences, Uppsala University, Villavägen 16, 752 36, Uppsala, Sweden

^d Department of Geology, Franklin College of Arts and Sciences, University of Georgia, 210 Field Street, Athens, GA, 30602-2501, USA

ARTICLE INFO

Keywords:

Microfabric analysis
Tensor analysis
Micro-tomography
X-ray computed tomography
MATLAB GUI

ABSTRACT

The study of rock fabric properties (orientation, planar, linear, anisotropy) is key to unravelling the geological processes that generated them. With advancements in data acquisition and treatment, X-ray micro-computed tomography (μ XCT) represents a powerful method to analyse the shape preferred orientation (SPO) of rock-forming elements, including minerals, aggregates, and pores, in the three-dimensional space. After reconstruction and segmentation of μ XCT images, we developed a novel protocol to construct and analyse the fabric tensor, a second-rank symmetric tensor constructed using the orientation and the length of the three characteristic axes of each grain (simplified to a best fit ellipsoid). The analysis of the fabric tensor permits calculation of mean principal directions and associated confidence ellipses, and quantifies the degree of anisotropy (P') and the shape (T) of the fabric ellipsoid by eigenvalue and eigenvector analysis.

We implement this method in the TomoFab open-source MATLAB package. The code integrates a graphical user interface (GUI) that allows the visualisation of the full set of ellipsoid orientation, shape, and size. Density plots and contouring can be utilised to identify fabrics graphically, and a full set of fabric parameters can be calculated based on the analysis of the fabric tensor and/or the analysis of each principal direction orientation tensor.

We demonstrate the versatility of TomoFab with synthetic datasets and a field- and laboratory-based investigation of a sample presenting a magmatic foliation and lineation, collected in the Mafic Complex within the lower crustal section of the Ivrea-Verbano Zone (North Italy). In the light of these developments, we stress that μ XCT represents a pertinent tool for rock fabric analysis to characterise the SPO of rock components. This approach can be performed parallel or complementary to other rock fabric quantification methods (e.g., AMS, EBSD) and applied to various rock types. TomoFab is freely available for download at <https://github.com/benpetri/tomofab>.

1. Introduction

A rock fabric (or petrofabric) corresponds to a spatial and geometrical arrangement of elements inherent to a rock (minerals, grain aggregates, pores, inclusions). This is controlled by compositional layering, grain size variations of minerals, shape preferred orientation (SPO) and crystallographic preferred orientation (CPO) of grains. The study of rock fabrics provides multi-scale insights into various geological

processes such as magma flow (Benn and Allard, 1989; Nicolas, 1992), rock strain patterns (Chopin et al., 2012), and paleo-sediment transport directions (Benn, 1994). The fabric development can be described semi-quantitatively in the field (foliation, lineation), but proper quantification requires more rigorous methods (Higgins, 2006). To date, quantitative fabric studies involve electron backscatter diffraction (EBSD; Prior et al., 1999) measurements for CPO determination (e.g., Bascou et al., 2001) and magnetic fabric measurements, such as

* Corresponding author. Université de Strasbourg, CNRS, IPGS UMR7516, F-67000, Strasbourg, France.

E-mail address: benpetri@unistra.fr (B. Petri).

¹ Development of ideas and software, data treatment, participation to discussions and manuscript writing.

² Development of ideas, participation to discussions and manuscript writing.

³ Data acquisition and treatment, participation to discussions and manuscript writing.

<https://doi.org/10.1016/j.cageo.2020.104444>

Received 25 March 2019; Received in revised form 11 February 2020; Accepted 11 February 2020

Available online 15 February 2020

0098-3004/© 2020 The Authors.

Published by Elsevier Ltd.

This is an open access article under the CC BY-NC-ND license

(<http://creativecommons.org/licenses/by-nc-nd/4.0/>).

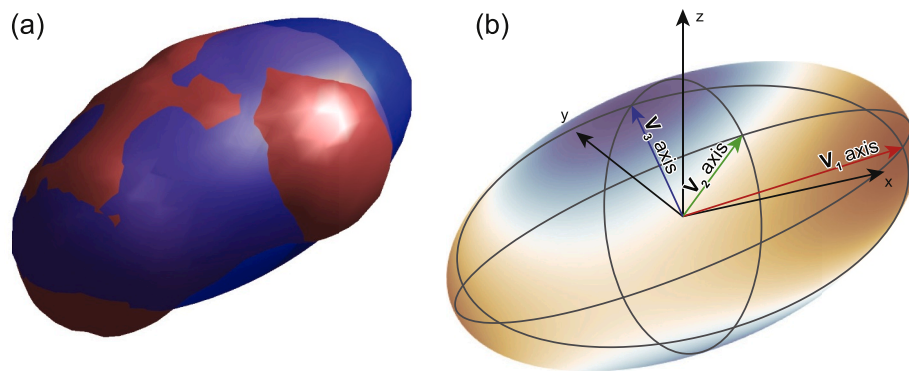


Fig. 1. (a) Three-dimensional view of a segmented grain (red) and its best-fit ellipsoid (blue), segmented and compiled with Blob3D (Ketcham, 2005b). (b) Three-dimensional view of the ellipsoid characterised by the length and orientation of three orthogonal principal axes V_1 , V_2 and V_3 . Colour map from Crameri (2018) representing the distance to the ellipsoid centre. (For interpretation of the references to colour in this figure legend, the reader is referred to the Web version of this article.)

anisotropy of both magnetic susceptibility (AMS) and anhysteretic remanent magnetization (AARM) (Borradaile and Jackson, 2010; Hirt and Almqvist, 2012); AMS and AARM depend on both CPO and SPO (for ferromagnetic minerals) of the magnetic minerals of rocks (Petri et al., 2018). Obtaining the three dimensional SPO is however time-consuming because it requires either serial sectioning or grinding of samples and image analysis (e.g., Bryon et al., 1995). Alternatively, the SPO can be estimated by analysing three or more section planes (slabs or thin sections) at high-angle to one another or by more advanced statistical methods if the observation planes are not mutually perpendicular (e.g., Heilbronner, 1992; Launeau and Robin, 2005; Moreno Chávez et al., 2018; Robin, 2002; Shan, 2008). The characterisation of a petrofabric by SPO requires determining the shape and orientation of each individual rock component. Consequently, a fabric can be either weakly developed (i.e., isotropic) with rounded and/or randomly oriented components or strongly developed (i.e., anisotropic) with highly elongated or flattened and strongly aligned components.

The development of micro-computed tomography techniques, using either X-ray or neutron tomography (e.g., Ketcham and Carlson, 2001; Vontobel et al., 2006), provides access to the three-dimensional exploration of a rock volume and represents a powerful tool when single grains and/or grain aggregates can be visualised and segmented. Micro-computed tomography has found several applications ranging from fluid flow characterisation in porous media (Islam et al., 2018; Starnoni et al., 2017) to imaging biological matter (Titschack et al., 2018). The size, shape and orientation of each individual object can be extracted (e.g., Som et al., 2013) using Blob3D for instance (Ketcham, 2005b), but this approach requires subsequent statistical treatment. There is a wealth of literature on the statistics of 3D orientation data (Fisher, 1953; Watson and Irving, 1957), which is summarised in several text books (Borradaile, 2003; Fisher et al., 1993; Mardia and Jupp, 2009). Specifically, spherical statistics are mainly obtained by means of vector (or axis) analysis or by analysing the orientation or the fabric second-rank tensors from which several parameters can be used to calculate the properties of the fabrics. While the construction of the orientation tensor is unequivocal (Scheidegger, 1965; Watson, 1966), various approaches to construct a “fabric tensor” have been reported, notably for bone structure characterisation (Odgaard, 1997) and applied to rock fabric quantification (Ketcham, 2005a; Launeau and Cruden, 1998; Launeau and Robin, 1996; Macente et al., 2017; Schöpa et al., 2015). The different approaches to construct a fabric tensor are: (1) the star length distribution (SLD; Odgaard et al., 1997; Smit and Odgaard, 1998), which probes the grain shape by analysing the length of axes sourcing from a point located in the volume; (2) the star volume distribution (SVD), which reports the volume of a cone that originates from a point located in the volume; and (3) the mean intercept length (MIL; Harrigan and Mann, 1984; Whitehouse, 1974), which is determined using the number of intercepts between a linear grid and the considered volume surface. All these continuum methods apply a regularly or randomly distributed counting grid that is particularly appropriate for

Table 1

Summary of symbols used in the equations, text and figures.

Symbol	Definition
i	Index of ellipsoid axis: 1, 2, 3
j	Index of ellipsoid: from 1 to N
l, m, n	Directional cosines of an axis
a	Axis directional cosines in vector format: (l, m, n)
N	Number of ellipsoids considered
V	Axis coordinates in vector format
R	Length of the mean axis calculated from a population of axes
O	Orientation tensor calculated from directional cosines of a population of axes
L	Linear fabric tensor calculated from a set of axes triplet
Q	Quadratic fabric tensor calculated from a set of axes triplet
λ	Eigenvalue of orientation or fabric tensors
v	Eigenvector of orientation or fabric tensors
E	Confidence angle around specified direction
P, G, R	Point, Girdle, or Random orientation distribution parameters of Vollmer (1990)
K	Or K-index; fabric shape parameter of Woodcock (1977)
LS	Fabric shape parameter of Ulrich and Mainprice (2005)
T	Fabric shape parameter of Jelínek (1981)
P'	Degree of anisotropy of a fabric of Jelínek (1981)

the characterisation of the fabric of a connected network of elements (e.g., connected pores). However, none of the current tools uses the full set of data that can be extracted from the best-fit ellipsoids that approximate grains and/or grain aggregates (Jerram and Higgins, 2007; Ketcham, 2005b, 2005a) with the aim of quantifying a fabric defined by a population of grains or pores.

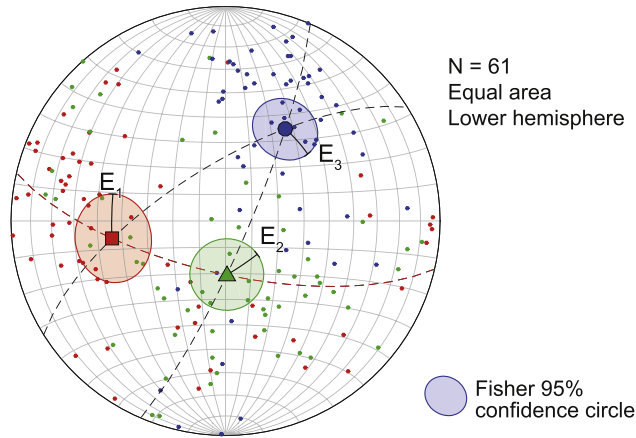
We present a set of parameters used to quantify the fabric development as basis of the TomoFab MATLAB package, which we developed to visualise and quantify petro-fabrics using micro-tomographic data. We finally illustrate and discuss the methodology using synthetic datasets and a case study from a rock core of gabbro presenting a magmatic foliation and lineation, collected in the Ivrea-Verbano Zone (Southern Alps, North Italy).

2. Methods

To satisfy the mutual dependency of three orthogonal principal axis orientation distributions (and related confidence angles), an appropriate approach should use the shape and the orientation of each individual grains simultaneously (i.e., the direction and length of the three principal axes V_1 , V_2 and V_3 with $||V_1|| \geq ||V_2|| \geq ||V_3||$; Fig. 1). To this end, we have built a method based on the SLD fabric tensor to construct a linear and a quadratic fabric tensor that both integrate all three principal axes of individual ellipsoid orientations and lengths.

More generally, two categories of approaches have been developed to treat orientation data, either by analysing vectors (or axes) or by constructing and analysing second-rank tensors. Two types of tensors

(a) Axis analysis with Fisher statistics



(b) Fabric tensor analysis with Hext-Jelínek statistics

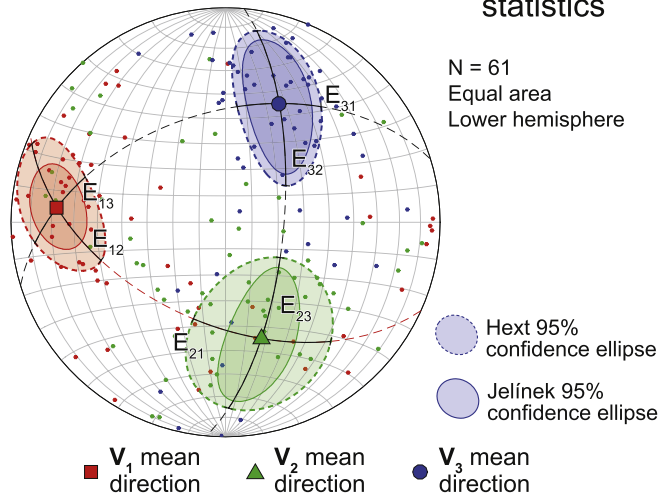


Fig. 2. Mean orientation statistics for the three principal axes defined by a set of ellipsoids. (a) Axis analysis and associated Fisher statistics. E_1 , E_2 and E_3 are cone half-opening angles for V_1 , V_2 and V_3 mean directions. (b) Fabric tensor analysis (linear fabric tensor) with Hext and Jelínek statistics. Hext-Jelínek confidence estimates result in elliptical confidence cones characterised by two half-opening angles (e.g., E_{13} and E_{12} for V_1 in the direction of V_3 and V_1 in the direction of V_2 , respectively). The red dashed line highlights the V_1 - V_2 plane, i. e., the foliation defined by the SPO; the lineation corresponds to the direction of V_1 . N : number of ellipsoids used for calculations. (For interpretation of the references to colour in this figure legend, the reader is referred to the Web version of this article.)

can be defined: the orientation tensor, constructed for each of the principal directions using their Cartesian coordinates (directional cosines), and the fabric tensor, here constructed using the three principal directions and length of associated axes. Each of the methods provides quantitative estimations of circular and elliptical confidence cones and fabric developments parameters. The nomenclature used is reported in Table 1.

2.1. Axis analysis and associated confidence estimates

An intuitive and easily applicable approach analyses orientation and length of each axis (also referred to as vector analysis; after Borradaile, 2003; Tauze, 2003) by calculating the length R of the mean axis by:

$$R = \sqrt{\left(\sum [\|V_{i,j}\| * l_{V_{i,j}}]\right)^2 + \left(\sum [\|V_{i,j}\| * m_{V_{i,j}}]\right)^2 + \left(\sum [\|V_{i,j}\| * n_{V_{i,j}}]\right)^2} \quad (1)$$

$l_{V_{i,j}}$, $m_{V_{i,j}}$ and $n_{V_{i,j}}$ being the directional cosines of each individual axis and $\|V_{i,j}\|$ the length of each individual axis. This method is convenient for statistical estimates of the distribution using Fisher statistics (Fisher, 1953) if data follows a unimodal distribution (one confidence angle; a circular confidence cone; Fig. 2a), and Bingham or Henry – Le Goff statistics (Bingham, 1964; Henry and Le Goff, 1995) if data distribution is bimodal (two confidence angles; an elliptical confidence cone). The main drawback of this approach is that the three principal directions of each ellipsoid are treated independently, whereas the orientation of each principal axis (e.g., V_1) depends on the orientation of the other two axes (V_2 and V_3). The orthogonality of the resulting mean directions will not be preserved and the compiled lineations and foliations defined by an ellipsoid population are without meaning, notably in case of relatively scattered principal axes orientation (Fig. 2a).

2.2. Orientation tensor

The mean orientation tensor is a second-rank symmetric tensor constructed using the sum of the directional cosines of a single principal direction (e.g., V_1). The method was developed in parallel by Scheidegger (1965) and Watson (1966). The orientation tensor is defined as:

$$O_{vi} = \sum_{j=1}^N a_j a_j^T \quad (2)$$

with $a_j = \begin{pmatrix} l_j \\ m_j \\ n_j \end{pmatrix}$, l , m , and n being the directional cosines of a specific principal direction (e.g., V_1). Thus, O_{vi} can be re-written as:

$$O_{vi} = \begin{bmatrix} \sum l_{V_{i,j}}^2 & \sum l_{V_{i,j}} m_{V_{i,j}} & \sum l_{V_{i,j}} n_{V_{i,j}} \\ \sum m_{V_{i,j}} l_{V_{i,j}} & \sum m_{V_{i,j}}^2 & \sum m_{V_{i,j}} n_{V_{i,j}} \\ \sum n_{V_{i,j}} l_{V_{i,j}} & \sum n_{V_{i,j}} m_{V_{i,j}} & \sum n_{V_{i,j}}^2 \end{bmatrix} \quad (3)$$

O_{vi} is frequently normalised by the sum of its eigenvalues or by the number of data points. The eigenvectors (v_1 , v_2 , v_3) of the greatest, intermediate, and smallest eigenvalues (λ_1 , λ_2 , λ_3) of O , corresponds to axes with maximum, intermediate, and minimum strength, respectively. Similar to the axis analysis, O_{vi} can only be calculated for an individual direction (e.g., O_{v1} for V_1 axes) but the combination of orientation tensors cannot involve more than 2 principal directions (Lisle, 1989), simply because the sum of O from the three orthogonal directions is null.

2.3. Fabric tensor

Calculation of the three orthogonal principal axes and their inter-dependent level of confidence alone is not sufficient to fully quantify the fabric tensor because it requires combining information on the three principal axes into a single tensor. This can be done using a fabric tensor that can be described in a linear or quadratic form.

2.3.1. Linear fabric tensor

The linear fabric tensor corresponds to the sum of the three orientation tensors of characteristic axes multiplied by their lengths:

$$L = \sum_{j=1}^N \|V_{1,j}\| a_{V_{1,j}} a_{V_{1,j}}^T + \sum_{j=1}^N \|V_{2,j}\| a_{V_{2,j}} a_{V_{2,j}}^T + \sum_{j=1}^N \|V_{3,j}\| a_{V_{3,j}} a_{V_{3,j}}^T \quad (4)$$

with $a_{V_{1,j}} = \begin{pmatrix} l_{V_{1,j}} \\ m_{V_{1,j}} \\ n_{V_{1,j}} \end{pmatrix}$, l , m , and n being the directional cosines of a specific principal direction (here V_1) and $\|V_{1,j}\|$ its length or norm. For example, the first element of equation (4) can be also written as:

$$\sum_{j=1}^N \|V_{1j}\| a_{V_{1j}} a_{V_{1j}}^T = \begin{bmatrix} \sum \|V_{1j}\| l_{V_{1j}}^2 & \sum \|V_{1j}\| l_{V_{1j}} m_{V_{1j}} & \sum \|V_{1j}\| l_{V_{1j}} n_{V_{1j}} \\ \sum \|V_{1j}\| m_{V_{1j}} l_{V_{1j}} & \sum \|V_{1j}\| m_{V_{1j}}^2 & \sum \|V_{1j}\| m_{V_{1j}} n_{V_{1j}} \\ \sum \|V_{1j}\| n_{V_{1j}} l_{V_{1j}} & \sum \|V_{1j}\| n_{V_{1j}} m_{V_{1j}} & \sum \|V_{1j}\| n_{V_{1j}}^2 \end{bmatrix} \quad (5)$$

2.3.2. Quadratic fabric tensor

The quadratic fabric tensor design is identical to the fabric tensor based on the SLD method (Ketcham, 2005a; Odgaard et al., 1997; Smit and Odgaard, 1998), but it adopts only the three characteristic axes of individual ellipsoids:

$$Q = \sum_{j=1}^N a_{V_{1j}} a_{V_{1j}}^T + \sum_{j=1}^N a_{V_{2j}} a_{V_{2j}}^T + \sum_{j=1}^N a_{V_{3j}} a_{V_{3j}}^T \quad (6)$$

with $a_{V_{1j}} = \begin{pmatrix} \|V_{1j}\| l_{V_{1j}} \\ \|V_{1j}\| m_{V_{1j}} \\ \|V_{1j}\| n_{V_{1j}} \end{pmatrix}$, l , m , and n being the directional cosines of a specific principal direction (here V_1) and $\|V_{1j}\|$ its length. For example, the first element of Q , which is the fabric tensor of V_1 , can also be written as:

$$\sum_{j=1}^N a_{V_{1j}} a_{V_{1j}}^T = \begin{bmatrix} \sum \|V_{1j}\|^2 l_{V_{1j}}^2 & \sum \|V_{1j}\|^2 l_{V_{1j}} m_{V_{1j}} & \sum \|V_{1j}\|^2 l_{V_{1j}} n_{V_{1j}} \\ \sum \|V_{1j}\|^2 m_{V_{1j}} l_{V_{1j}} & \sum \|V_{1j}\|^2 m_{V_{1j}}^2 & \sum \|V_{1j}\|^2 m_{V_{1j}} n_{V_{1j}} \\ \sum \|V_{1j}\|^2 n_{V_{1j}} l_{V_{1j}} & \sum \|V_{1j}\|^2 n_{V_{1j}} m_{V_{1j}} & \sum \|V_{1j}\|^2 n_{V_{1j}}^2 \end{bmatrix} \quad (7)$$

2.3.3. Fabric tensor analysis

Both the linear and the quadratic fabric tensors can be decomposed into eigenvectors (v_1, v_2, v_3) of the greatest, intermediate, and smallest eigenvalues ($\lambda_1, \lambda_2, \lambda_3$), which give the maximum, intermediate, and minimum values of the “moment of inertia” i.e., the mean principal directions and lengths of V_1, V_2 and V_3 of the fabric ellipsoid, which will be orthogonal (Fig. 2b). From the principal directions, the coordinates of the foliation and the lineation defined by the SPO of the ellipsoids can be calculated and correspond to the V_1 - V_2 plane and to the V_1 axis, respectively.

Several operations are applicable when constructing the orientation tensor. One consists of constructing the fabric tensor with normalised individual ellipsoid size (e.g., by the root of the sum of the square axis length or by the length of the V_1 axis) so that all ellipsoids are weighted equally. This would avoid that the fabric tensor is dominated by a small number of highly anisotropic and large ellipsoids, which potentially form a secondary and weaker fabric (sub-fabric; see discussion below and in the work of Borradaile, 2001). For convenience, both L and Q can be normalised by the sum of its eigenvalues.

2.3.4. Confidence estimates

Calculations to estimate the data dispersion from second-rank tensors were initially proposed for anisotropy of magnetic susceptibility (AMS) measurements but are applicable to other second-rank tensors on the condition that they are symmetric. The methods permit calculation

of confidence angles that define an elliptical cone around each mean principal axis by integrating the mutually dependant distribution of the individual axes.

First, the Hext method (Hext, 1963; summarised in Tauxe, 2003) uses the mean value of the tensor diagonal elements and uses its deviation to calculate confidence angles. Three angles of confidence of the three mean directions are calculated: $E_{12} = E_{21}$; $E_{13} = E_{31}$; and $E_{23} = E_{32}$, with E_{12} being the confidence angle around V_1 in the direction of V_2 (Fig. 2b), usually calculated at a 95% level of confidence.

The method of Jelínek (Jelínek, 1978; summarised in Tauxe, 2003) requires a larger number of calculations with the use of the covariance matrix of a reassembled tensor to construct three matrices whose eigenvalues are used to derive six different confidence angles: $E_{12}, E_{21}, E_{13}, E_{31}, E_{23}$ and E_{32} . Both methods usually provide similar confidence angles, although the Hext method tends to generate larger confidence angles than those produced by the Jelínek method (Fig. 2b; Borradaile, 2003; Tauxe, 2003; Werner, 1997). Both Hext and Jelínek methods require measurements that have uncertainties with zero mean as well as

being normally distributed and small (see discussion in Tauxe, 2003). This can be verified using quantile-quantile plots (Q-Q plots; Tauxe, 2003). A third method was therefore developed by Constable and Tauxe (1990) using a bootstrapping approach that would be preferred in the presence of a sub-fabric (bimodal orientation distribution).

2.4. Fabric parameters

Second-order tensors are particularly appropriate to derive quantitative parameters characterising fabrics, as commonly done with structural data, EBSD or AMS. Indeed, fabric analysis can be performed either by using the eigenvalues of the orientation tensor of each axis treated separately (O_{Vi} ; K -index; P, G, R values; parameters introduced below), a combination of eigenvalues of multiple orientation tensors (O_{V1} and O_{V3} ; LS -index) or simply the eigenvalues of the fabric tensor (L and Q ; shape parameter T , corrected anisotropy P'). All parameters rely on the following ellipsoid shape end-members:

- (1) Spherical ellipsoid if $V_1 = V_2 = V_3$;
- (2) Planar ellipsoid if $V_1 = V_2 > V_3$;
- (3) Linear ellipsoid if $V_1 > V_2 = V_3$;
- (4) Triaxial (neutral) ellipsoid if $V_1 > V_2 > V_3$;
- (5) The greater the difference between the lengths of each axis, the more anisotropic the ellipsoid becomes.

Most of these parameters can be calculated from a best fit ellipsoid (with V_1, V_2, V_3 lengths) to each grain, but also for the fabric tensor

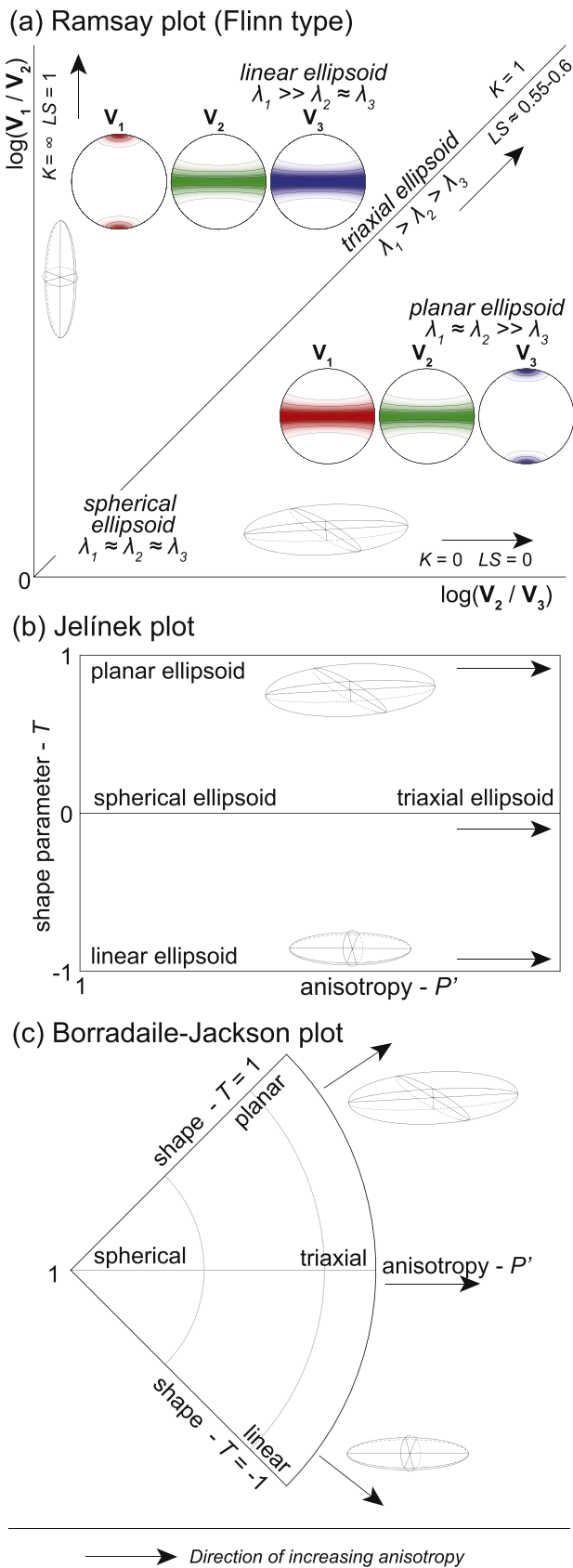


Fig. 3. Examples of fabric diagrams, associated fabric ellipsoids and ideal distribution of V_1 , V_2 and V_3 orientations. (a) Ramsay plot (modified Flinn diagram; Flinn, 1962; Ramsay, 1967), (b) standard P' - T plot (Jelínek plot; Jelínek, 1981) and (c) polar P' - T plot (Borradaile and Jackson, 2010). Black arrows indicate the direction of increasing degree of anisotropy.

eigenvalues ($\lambda_1, \lambda_2, \lambda_3$) resulting from the combination of many grains. Various types of diagrams can be used to analyse the parameters calculated from each grain and from the fabric tensor (Fig. 3).

2.4.1. Shape parameters

One of the first parameters that was introduced is the K -index (Woodcock, 1977), which can be computed using any of the orientation tensors. It is most likely calculated using the orientation tensor of the longest axis of objects (i.e., c -axis for pyroxene, V_1 for ellipsoids) and is defined by Woodcock, 1977 as:

$$K = \frac{\ln(\lambda_1/\lambda_2)}{\ln(\lambda_2/\lambda_3)} \tag{8}$$

The K -index value ranges from 1 to ∞ for linear ellipsoids, approaches 1 for spherical and triaxial neutral ellipsoid and ranges from 1 to 0 for planar ellipsoids. It is an analogue to the Flinn (1962) or Ramsay (1967) diagram used in structural geology (Fig. 3a).

Alternatively, Vollmer (1990) proposed the definition of three parameters to estimate the distribution of directions by the calculation of the P (equal 1 for point distribution), G (equal 1 for girdle distribution) and R (equal 1 for random distribution) parameters defined as follows:

$$P = \lambda_1 - \lambda_2, G = 2 \times (\lambda_2 - \lambda_3), R = 3 \times \lambda_3 \tag{9}$$

with $P + G + R = 1$ and λ_1, λ_2 , and λ_3 being the three eigenvalues of the orientation tensor of the chosen principal axis.

The LS -index of Ulrich and Mainprice (2005) is constructed using the P , G , and R parameters of two perpendicular principal directions, commonly the largest and smallest axes (e.g., b - and c -axes of pyroxene, V_1 and V_3 of ellipsoids, respectively), and are defined as:

$$LS = \frac{1}{2} \left[2 - \left(\frac{P_{V3}}{G_{V3} + P_{V3}} \right) - \left(\frac{G_{V1}}{G_{V1} + P_{V1}} \right) \right] \tag{10}$$

with P_{V3} and G_{V3} being the P and G parameters calculated using the V_3 orientation tensor and P_{V1} and G_{V1} being the P and G parameters calculated using the V_1 orientation tensor. Consequently, the LS -index equals 1 for linear fabrics and is 0 for planar objects (Fig. 3a).

The shape parameter T , developed for AMS measurements, uses a tensor containing the information of the three orthogonal principal directions (i.e., a fabric tensor). It is defined by Jelínek (1981) as:

$$T = \frac{\ln(\lambda_2/\lambda_3) - \ln(\lambda_1/\lambda_2)}{\ln(\lambda_2/\lambda_3) + \ln(\lambda_1/\lambda_2)} \tag{11}$$

The shape parameter T reflects shape of the fabric ellipsoid: rotational planar ($1.0 \geq T > 0.5$); planar to plano-linear ($0.5 \geq T > 0.2$); plano-linear ($0.2 \geq T > -0.2$); plano-linear to linear $-0.2 \geq T > -0.5$); rotational linear ($-0.5 \geq T \geq -1.0$).

2.4.2. Anisotropy

The degree of anisotropy of the fabric can be inferred from the “corrected” anisotropy parameter P' (Jelínek, 1981) of the fabric tensor, defined as:

$$P' = \exp \sqrt{2 \left[\left(\ln \left(\frac{\lambda_1}{\lambda_m} \right) \right)^2 + \left(\ln \left(\frac{\lambda_2}{\lambda_m} \right) \right)^2 + \left(\ln \left(\frac{\lambda_3}{\lambda_m} \right) \right)^2 \right]} \tag{12}$$

with $\lambda_m = (\lambda_1 + \lambda_2 + \lambda_3)/3$. The P' parameter increases from 1 (isotropic) up to values depending on the shape and distribution of its constituents. Both P' and T parameters are combined to construct the Jelínek plot, as particularly adapted for rock fabric analysis (Fig. 3b). However, low anisotropy ellipsoids that approach to a spherical shape can be graphically scattered in a standard Jelínek plot. To avoid this graphical bias, an alternative approach was proposed by Borradaile and Jackson (2010) with a polar P' - T plot (Fig. 3c).

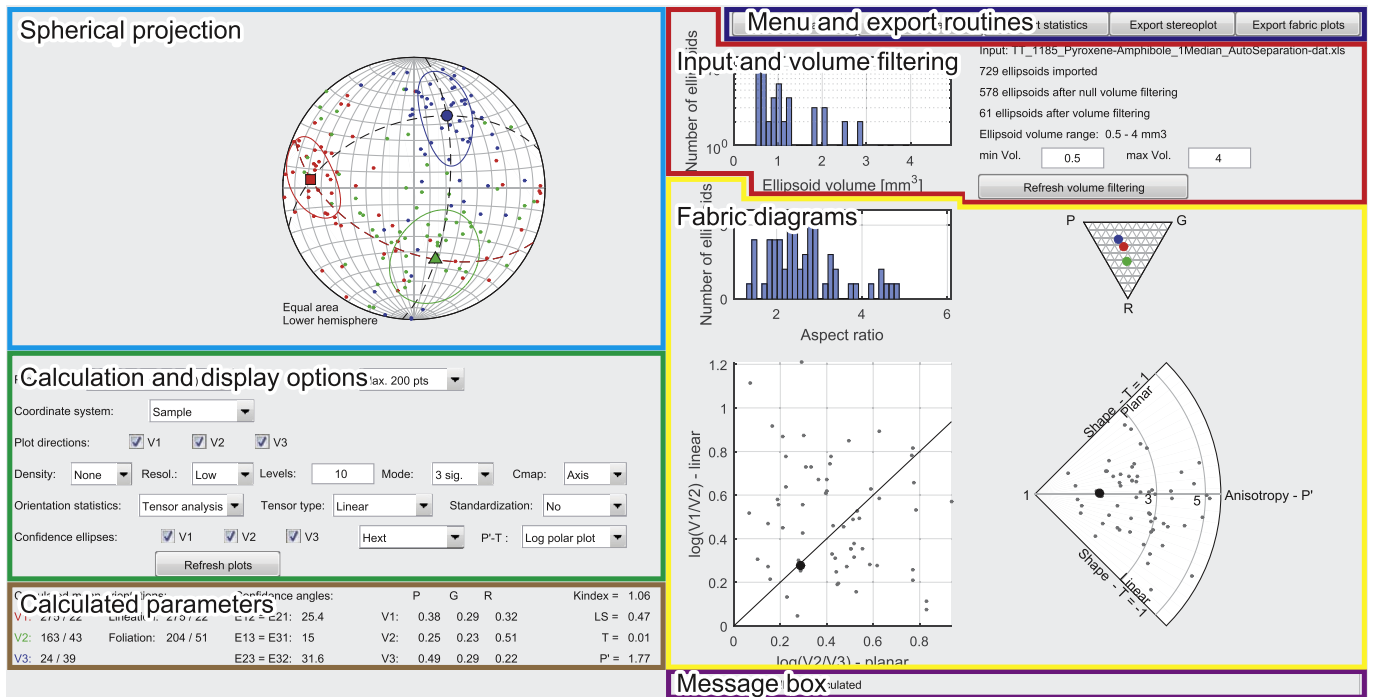


Fig. 4. Graphical user interface of TomoFab allowing to display, analyse and quantify orientation and fabric statistics.

3. Implementation of the TomoFab program

The various methods for mean direction calculations, confidence ellipses and parameters informing about the characteristics of the fabric have been incorporated in the TomoFab MATLAB package (a continuously maintained version is available for download at <https://github.com/benpetri/tomofab>). The code runs on multiple platforms using MATLAB R2015a and newer versions without additional specific toolboxes. The user can run the `tomofab.m` file, which launches promptly the graphical user interface or GUI (Fig. 4).

The GUI consists of different panels that allow loading and exporting data and plots and then visualizing and filtering input data using the ellipsoid volume. Input files are tab-separated value tables of ellipsoids and sample orientation information. Volume filtering automatically recalculates all statistical parameters and updates all plots. Orientation data are plotted in either equal area (Schmidt) or equal angle (Wulff) nets, however the equal area projection is recommended for fabric analysis to avoid the inherent density distortion of the stereographic equal angle projection. The user can identify data clustering (fabrics and sub-fabrics) using contoured density plots constructed with a modified Kamb method (Vollmer, 1995) displaying densities in 3σ (standard deviation) or in multiples of uniform distribution (MUD).

Calculation of mean orientations can be performed either by vector analysis (orthogonality between the mean principal directions is not taken into account) or using the analysis of the fabric tensor (orthogonality between the mean principal directions is preserved). The user has the choice to either use a linear or a quadratic fabric tensor. Depending on the dataset, the user may normalise the size of each ellipsoid by the root of the sum of the squared axis lengths to limit the influence of a small number of large and highly anisotropic ellipsoids on the fabric tensor (the effect of the “sub-fabric” above described). Depending whether the orientation statistics were compiled by vector or tensor analysis, Fisher, Hext and Jelínek confidence cones can be calculated and displayed. Additional statistical methods can also be implemented such as Bingham statistics. For each loop of calculation, orientation parameters (mean V_1 , V_2 and V_3 direction, foliation, and lineation dip directions) are updated at the bottom-left of the window.

Fabric diagrams are updated at each calculation loop and consist of an ellipsoid aspect ratio (V_1/V_3) histogram, a PGR ternary diagram for each principal direction (Vollmer, 1990), a Ramsay plot using a $\log(|V_2|/|V_3|) - \log(|V_1|/|V_2|)$ correlation (Fig. 3a; modified from Flinn, 1962; Ramsay, 1967) and a Jelínek plot ($P'-T$; Fig. 3b; Jelínek, 1981) for individual ellipsoid but also for the fabric tensor. Alternatively, a polar $P'-T$ plot of Borradaile and Jackson (2010) can be used, with either a linear P' axis or a $\log(P')$ axis in case of dataset with scattered individual ellipsoid P' , which is likely the case with geological material analysed with μ XCT compared to standard P' values derived from AMS dataset (usual P' values are ranging between 1 and 1.2).

All calculations can be performed in the sample coordinate system, but the full dataset can be re-oriented back to the geographic coordinate system. To do so, the sample orientation should be known and highlighted by a physical mark before the tomography analysis, in order to apply upside down analysis, strike and dip angle corrections. In such a case, the program reads orientation information and applies corrections for each individual ellipsoid, and performs all calculations (axis or tensor analysis, confidence estimates, fabric parameters) in the geographic coordinate system.

4. Synthetic case study

In order to test the different methods of constructing fabric tensors and the implications for confidence ellipses calculation and fabric parameters, we have generated synthetic datasets composed of ellipsoids with variable size, shape, and orientation distribution (Figs. 5–7).

4.1. Fabric parameters

The first dataset employed (Figs. 5 and 6) corresponds to a set of 50 planar and planar to plano-linear ellipsoids with $V_1 \approx 1$ mm, $V_2 \approx 0.9$ mm and $V_3 \approx 0.6$ mm and 3 linear to plano-linear ellipsoids with $V_1 \approx 2$ mm, $V_2 \approx 0.9$ mm and $V_3 \approx 0.6$ mm. These ellipsoids are rotated around their V_1 axis to produce a linear fabric (Figs. 5a and 6a) or rotated around their V_3 axis to produce a planar fabric (Figs. 5b and 6b). For better visibility, random noise is added to the orientation of the

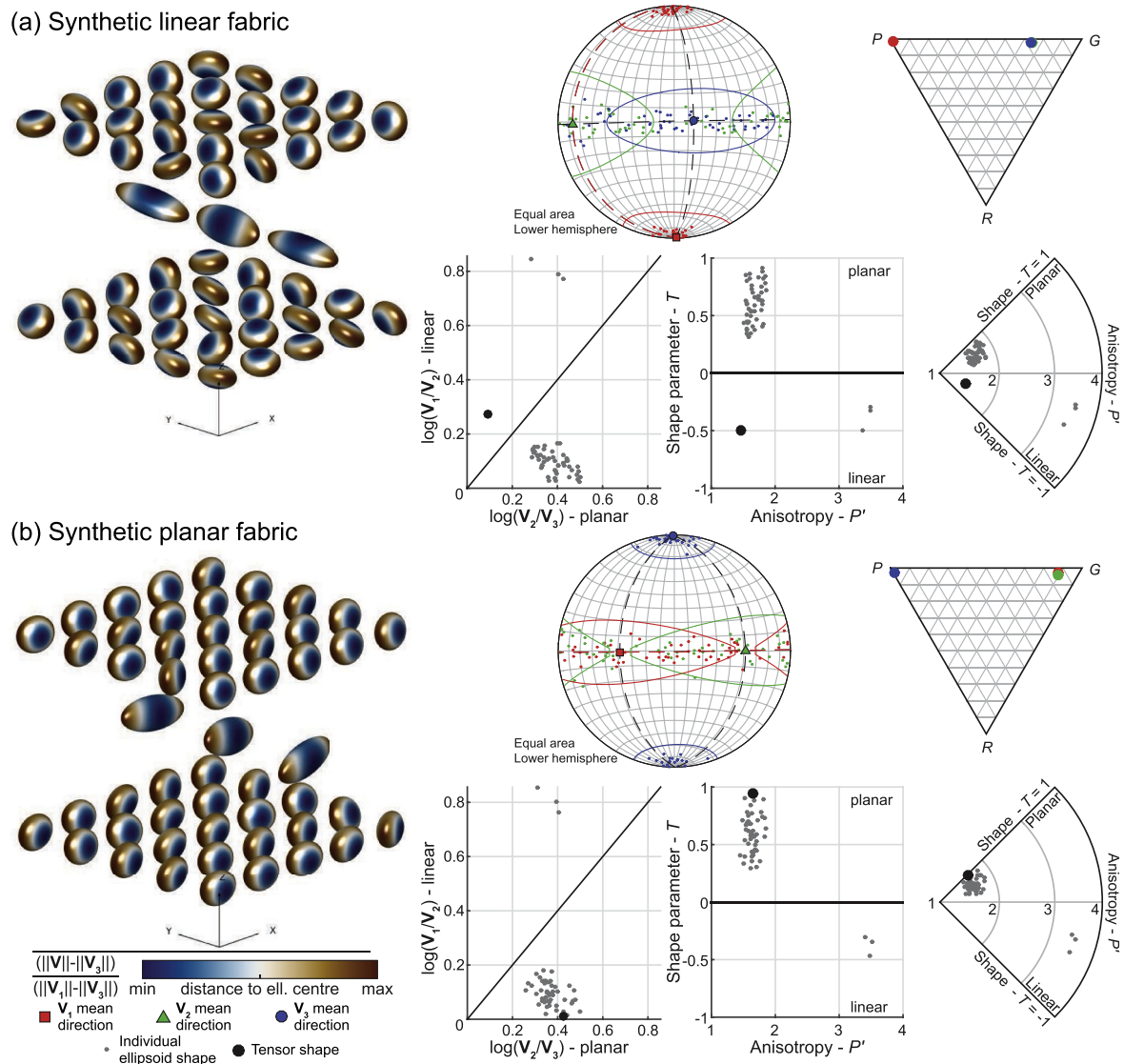
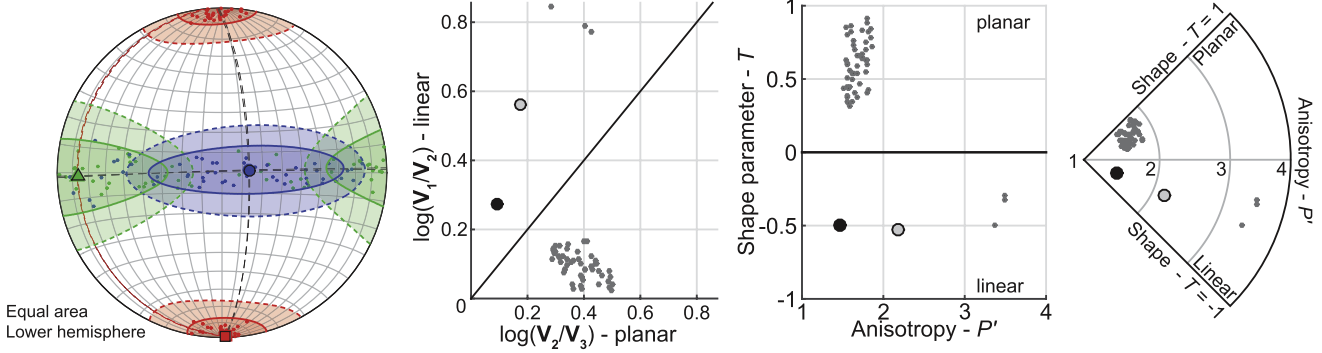


Fig. 5. Synthetic datasets composed of ellipsoids with different orientation distribution illustrated with a 3D rendering of the ellipsoids, Schmidt net, PGR diagram, Ramsay diagram, standard P - T diagram and polar P - T diagram. (a) Ellipsoids rotated around their V_1 axes to produce a linear fabric. (b) Ellipsoids rotated around their V_3 axes to produce a planar fabric. The red dashed line highlights the V_1 - V_2 plane, i.e., the foliation defined by the SPO; the lineation corresponds to the direction of V_1 . Statistics calculated with a linear fabric tensor and Hext confidence ellipses at 95% level of confidence. See text for details. Colour map from [Cramer \(2018\)](#) representing the distance to the ellipsoid centre. (For interpretation of the references to colour in this figure legend, the reader is referred to the Web version of this article.)

(a) Synthetic linear fabric



(b) Synthetic planar fabric

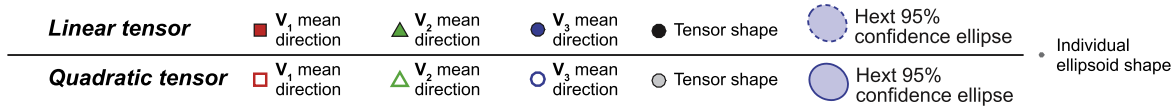
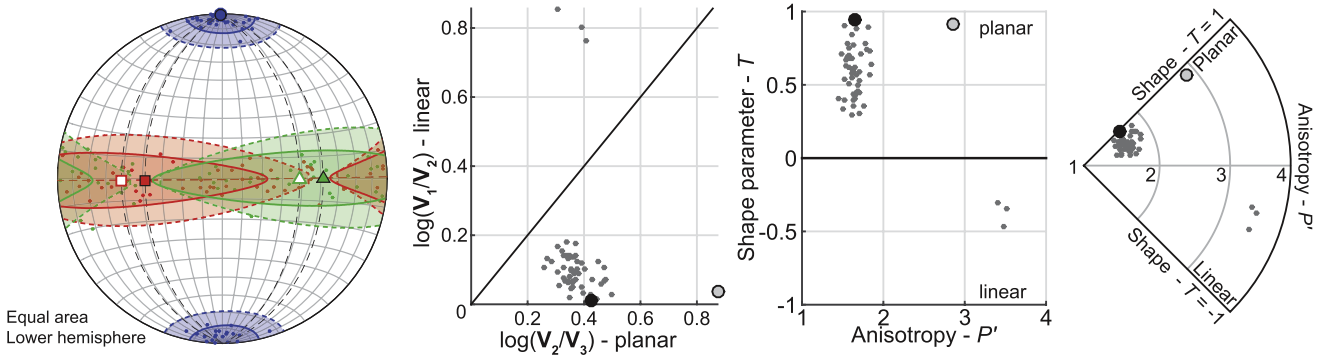


Fig. 6. Difference in mean axes orientation, Hext confidence ellipses at 95% level of confidence and fabric statistics between linear fabric tensors and quadratic fabric tensors compiled for the two datasets presented in Fig. 6: (a) synthetic linear fabric and (b) synthetic planar fabric. The red dashed line highlights the V₁-V₂ plane - i. e., the foliation defined by the SPO; the lineation corresponds to the direction of V₁. (For interpretation of the references to colour in this figure legend, the reader is referred to the Web version of this article.)

ellipsoids and the length of their axes.

The synthetic linear fabric (Fig. 5a) displays a point clustering of V₁ axes and girdle distribution of V₂ and V₃ axes, confirmed by the PGR values and diagram. Accordingly, the use of a linear fabric tensor indicates V₁ mean direction at V₁ clustering point, whereas V₂ and V₃ mean directions lie on the girdle defined by V₂ and V₃ individual ellipsoids axes. Compiled Hext confidence angles also highlight the V₂-V₃ girdle distribution, with E₂₃ and E₃₂ angles larger than the other angles. The compiled fabric parameters (K = 7.4; LS = 0.87; T = -0.50; P' = 1.5) clearly indicate a linear to plano-linear fabric. It has to be noted that the shape parameter of the fabric ellipsoid has quite high values (T = -0.5), despite the fact that high G values for V₂ and V₃ would rather lead to lower T values (T ≈ -1). This is the result of the shape of the majority of the individual grains that are planar to plano-linear, avoiding extreme linear T values.

The synthetic planar fabric (Fig. 5b) displays a point clustering of V₃ axes whereas V₁ and V₂ axes are distributed along a girdle, in agreement with the PGR values of the three principal axes. Using a linear fabric tensor, the mean V₁ and V₂ directions lie on the girdle defined by the individual ellipsoid principal axes, whereas mean V₃ is located on the V₃ cluster. The derived Hext confidence angles shows high opening values for E₁₂ and E₂₁ whereas the other confidence angles are rather small. In agreement to this, the fabric parameters indicate a clearly planar fabric (K = 0.06; LS = 0.06; T = 0.95; P' = 1.6). The shape parameter (T) is

quite high in comparison to the one compiled with the synthetic linear fabric (Fig. 5a) and is explained by the planar and planar to plano-linear shape of individual ellipsoids. This clearly demonstrates the influence of the shape of individual ellipsoids on the resulting fabric ellipsoid.

4.2. Linear vs. quadratic fabric tensor

Using the same two synthetic datasets, we have compiled mean orientation, confidence angles and fabric parameters from linear fabric tensors and quadratic fabric tensors (Fig. 6). The calculated mean principal axes for the synthetic linear fabric is almost identical between the two tensors. However, the mean principal directions of V₁ and V₂ for the synthetic planar fabric shows misorientation of ~10° but remains on the girdle defined by the V₁ and V₂ individual ellipsoid orientations. The Hext confidence angles calculated using the two methods present systematically smaller opening angles with a quadratic fabric tensor than with a linear fabric tensor. The fabric parameters that are derived from both linear (Fig. 6a; K = 7.4; LS = 0.87; T = -0.53; P' = 2.2) and planar synthetic fabrics (Fig. 6b; K = 0.06; LS = 0.06; T = 0.92; P' = 2.9) still indicates a plano-linear to linear fabric and a planar fabric, respectively. K- and LS- indexes are identical as they are compiled with V₁ and V₃ orientation tensors. This is not the case with the parameters derived from fabric tensors, notably for the anisotropy parameter P': the squared axes length favours long axes more than small axes when constructing

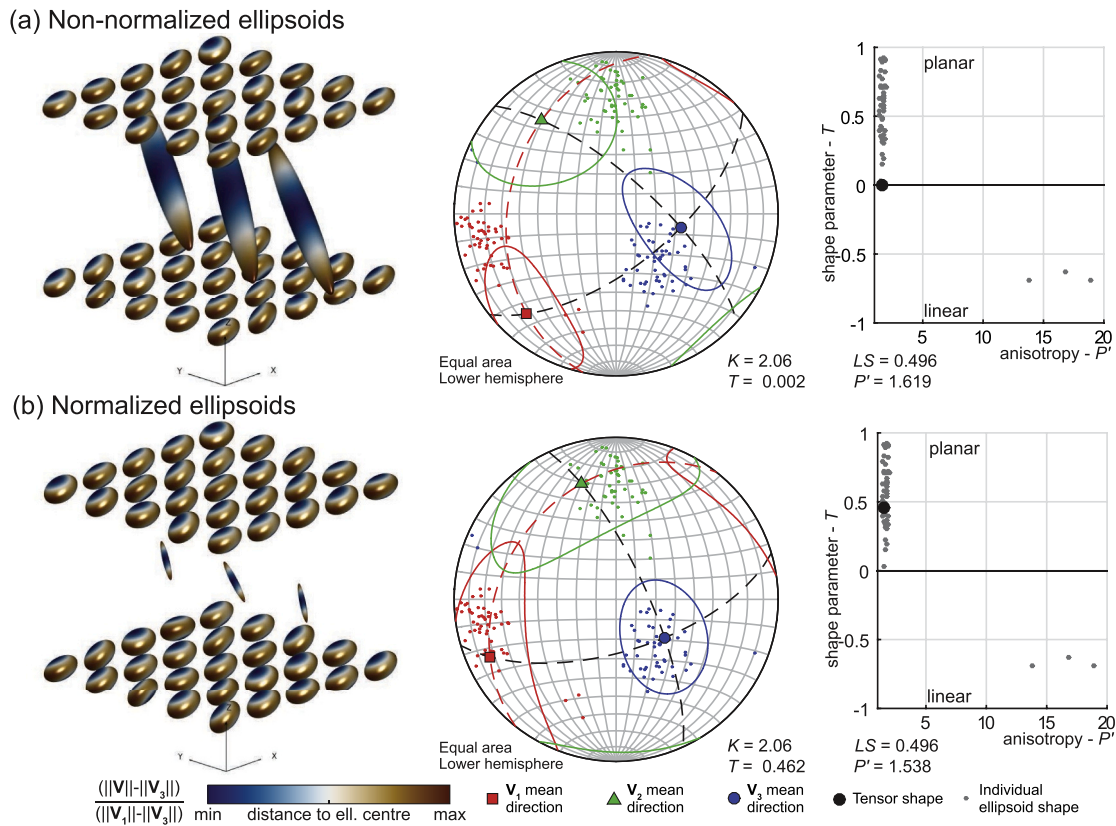


Fig. 7. Influence of ellipsoid size and anisotropy on the linear fabric tensor analysis using datasets for which each individual ellipsoid is either (a) non-normalised or (b) normalised by the root of the sum of the squared length (“unit ellipsoids”). The red dashed line highlights the V_1 – V_2 plane – i.e., the foliation defined by the SPO; the lineation corresponds to the direction of V_1 . Hext confidence ellipses are plotted at 95% level of confidence. See text for details. Colour map from Cramer (2018) representing the distance to the ellipsoid centre. (For interpretation of the references to colour in this figure legend, the reader is referred to the Web version of this article.)

the tensor, but also when deriving its eigenvalues and eigenvectors. This has several consequences: (1) the calculated mean principal directions with a quadratic fabric tensor are predominantly influenced by the orientation of the large ellipsoids compared to the small ellipsoids, explaining the misorientation of V_1 and V_2 observed in Fig. 6b; and (2) the quadratic fabric ellipsoid has a different shape parameter (T) value and higher degree of anisotropy (P'), which cannot be compared to individual ellipsoids.

4.3. Standardised fabric tensor

The second dataset employed (Fig. 7) is composed of 50 planar to plano-linear ellipsoids with $V_1 \approx 1$ mm, $V_2 \approx 0.9$ mm and $V_3 \approx 0.6$ mm and 3 larger linear ellipsoids with $V_1 \approx 6$ mm, $V_2 \approx 0.9$ mm and $V_3 \approx 0.6$ mm. The axes orientation and length are varied slightly for better visualisation: the three large ellipsoids are defining a V_1 cluster at 205/25 whereas the set of small ellipsoids are defining a V_1 cluster at 260/20.

As fabric tensors are constructed using the length of the characteristic axes of ellipsoids, more weight is attributed to large and highly anisotropic ellipsoids than to small and isotropic ellipsoids. The influence of such outlier ellipsoids is moderate when using linear fabric tensors but dominant using quadratic fabric tensors. This effect is depicted in Fig. 7a, where the mean principal axes are lying in between the two clustering points, in particular for mean V_1 and V_3 axes. Confidence ellipses clearly show a triaxial fabric ellipsoid (note that the exemplified bimodal distribution might not be suitable for Hext and Jelínek confidence estimates; see section 2.3.4.). This is confirmed by the fabric statistics, especially by the T value ($K = 2.1$; $LS = 0.50$; $T =$

-0.00 ; $P' = 1.6$). The mean axes orientation, the confidence ellipses and the fabric statistics indicate that the three large ellipsoids define a sub-fabric that overcomes the fabric defined by the 50 smaller ellipsoids. This may occasionally lead to a decoupling between indexes derived from orientation tensors and indexes derived from fabric tensors (here $K > 1$ and $T = 0$). The sub-fabric effect is attenuated by normalising each individual ellipsoid by the root of the sum of the squared axes length to obtain “unit ellipsoids” (see details in Borradaile, 2001). In such a case, mean principal directions and fabric statistics are ruled by the most populated set of ellipsoids rather than by the largest and most anisotropic ellipsoids (Fig. 7b), which mean principal directions localised at individual axes clustering points, and confidence angles and fabric statistics approaching values expected from the set of 50 small ellipsoids ($K = 2.1$; $LS = 0.50$; $T = 0.46$; $P' = 1.5$).

5. Natural case study

The natural example represents a sub-volume of an oriented core (~45-mm diameter) collected with a portable rock drill (Fig. 8). It consists of a pyroxene-bearing gabbro from the exposed lower-crustal section of the Ivrea-Verbano Zone, in the gabbro-norite zone of the Upper Mafic Complex (sample MC07-02; 45.84826°N; 8.19640°E; Val Mastallone, NW Italy). The sample is composed of pyroxenes, plagioclase, and oxides (magnetite and ilmenite) and presents a well-developed foliation and lineation marked by the preferred orientation of magmatic pyroxene grains (Fig. 8a–c). Notably, the study of this sample allows a better understanding of the dynamics and the fabric development related to magma flow and emplacement in the lower

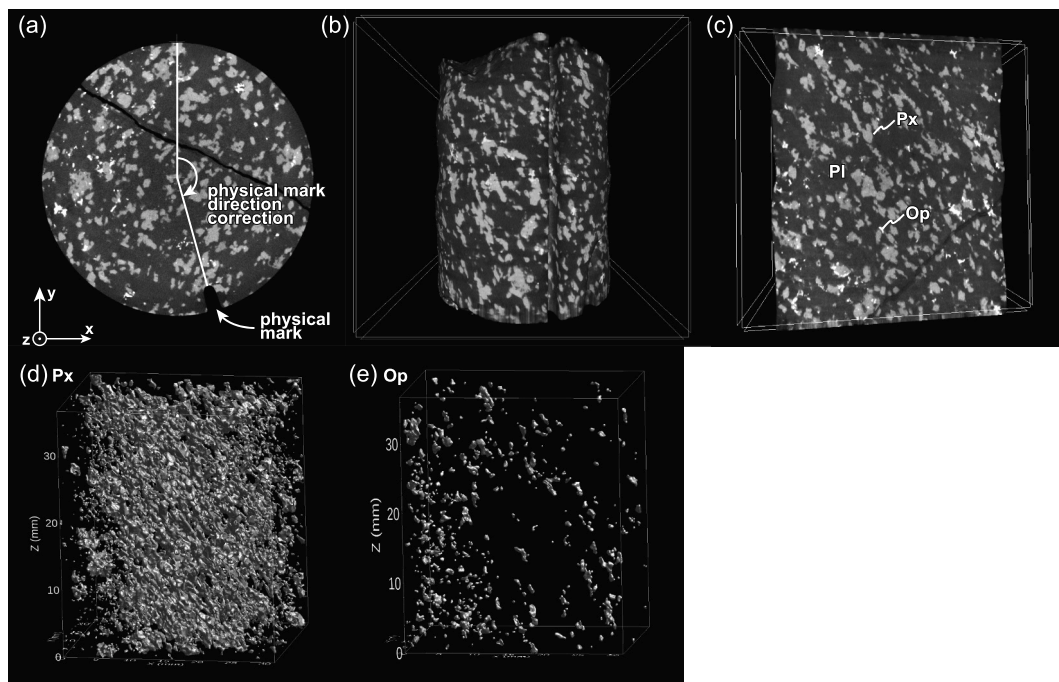


Fig. 8. μ XCT images and segmented images of a pyroxene-bearing gabbro from the Upper Mafic Complex in the Ivrea-Verbano Zone (Southern Alps, North Italy). (a) Section of the core showing the physical mark needed to reorient data to the geographical reference frame. (b) Reconstructed volume showing the analysed sample and the physical mark. (c) Reconstructed section across the analysed core showing coarse grained pyroxene, plagioclase and oxide gabbro with a well-developed magmatic foliation. Segmented sub-volume presenting (d) pyroxene and (e) oxide blobs processed with Blob3D (Ketcham, 2005b), represented in the sample reference frame. Px: pyroxenes; Pl: plagioclase; Op: opaque mineral (oxides; magnetite and ilmenite).

crust.

The sample was imaged with a Bruker SkyScan 1173 X-ray microtomographer at the University of Lausanne (Switzerland) using a source voltage of 130 kV and a source current of 61 μ A for 6 h, producing 801 slices with a 50 μ m spatial resolution. Image segmentation and both automatic and manual separations (i.e., defining and isolating a set of connected voxels that constitutes a blob; see Appendix A for details) were performed using Blob3D (Ketcham, 2005b) before measuring each blob centre coordinates, volume and best-fit ellipsoid axis length and orientation using the same software. Figs. 9–10 present fabric and orientation distribution of pyroxene and oxide grains that were manually separated and selected by their volume (0.5–8.5 mm^3 for pyroxene; 0.1–2.4 mm^3 for oxide). A comparison between automatic and manual segmentation results is reported in Table 2 and as Supplementary Material (see Appendix A). In order to compare the results of our approach to state-of-the-art methods, we performed a Star Length Distribution (SLD) analysis using Quant3D (Ketcham, 2005a; Odgaard et al., 1997; Smit and Odgaard, 1998) on the same set of images segmented with Blob3D. The SLD is a continuum method of fabric characterization that does not require a separation of grains or even to consider grains, but suffers from being grain size sensitive; a large grain will be sampled and integrated several times, whereas smaller grains may even not be integrated.

Individual best-fit ellipsoid of both pyroxene and oxide grains are scattered but pyroxene grains are preferentially plano-linear, whereas oxide grains are more elongated, being preferentially linear to plano-linear (Fig. 9). In the absence of solid-state deformation, these individual grain shape parameters correspond to the almost ideal shape of magmatic pyroxenes and oxides.

Orientation of individual grains best-fit ellipsoid of pyroxene grains (Fig. 10a) shows a clear V_1 vertical point distribution with a weak vertical girdle that is striking towards the NNE. Conversely, V_3 distribution presents a horizontal girdle distribution with ESE and WNW point maxima. The analysis of the linear fabric tensor compiled with the same dataset constrains a vertical foliation and a vertical lineation at

$\sim 10^\circ$ from the field measured foliation and lineation. The fabric defined by the pyroxene grains is linear to plano-linear as indicated by the analysis of the orientation tensors ($K = 1.776$; $LS = 0.625$) and the linear fabric tensor ($T = -0.248$; $P' = 1.537$). The SLD analysis of segmented but not separated images indicate a plano-linear fabric (Fig. 9a; $\lambda_1 = 0.384$; $\lambda_2 = 0.335$; $\lambda_3 = 0.281$; equivalent to $T = 0.117$ and $P' = 1.367$) with higher equivalent T values than those ones derived from the linear fabric tensor, likely due to the integration of grains aggregates when using the SLD method.

The orientation distribution of oxide grains (Fig. 10b) is moderately scattered. The distribution of V_1 orientations draws a moderately defined girdle that steeply dips to the ESE from which a vertical point distribution can be noticed. On the other hand, V_3 distribution defines two ESE and WNW horizontal, but scattered, point distribution. The analysis of the linear fabric tensor presents rather similar orientations to those derived for the pyroxene grains, but with larger Hext and Jelínek confidence estimates due to the scattered distribution of individual grain orientation. Although oxide grains are individually quite elongated (Fig. 9b), the fabric they define is planar to plano-linear ($K = 0.653$; $LS = 0.260$; $T = 0.302$; $P' = 1.323$). The results of both orientation and fabric tensor analysis are in good agreement with the SLD analysis (Fig. 9b; $\lambda_1 = 0.372$; $\lambda_2 = 0.342$; $\lambda_3 = 0.286$; equivalent to $T = 0.351$ and $P' = 1.307$).

In general, the use of automatically separated grains allows to give a first order constraint on the grain shape and fabric properties, but the analysis is disturbed by the integration of a large number of grain aggregates as well as randomly oriented, very small grains that are ruled out by volume filtering using TomoFab (see comparison in Appendix A). We have to highlight that in our example, both automatically and manually separated datasets lead to similar fabric properties which may not be the case for all datasets, notably in case of interconnected pores or grains (aggregates). However, manual separation clearly increases the quality of the dataset, allowing to better document the difference in fabric properties between the pyroxene and the oxide grain population that relates different stress regime during the sequential crystallisation

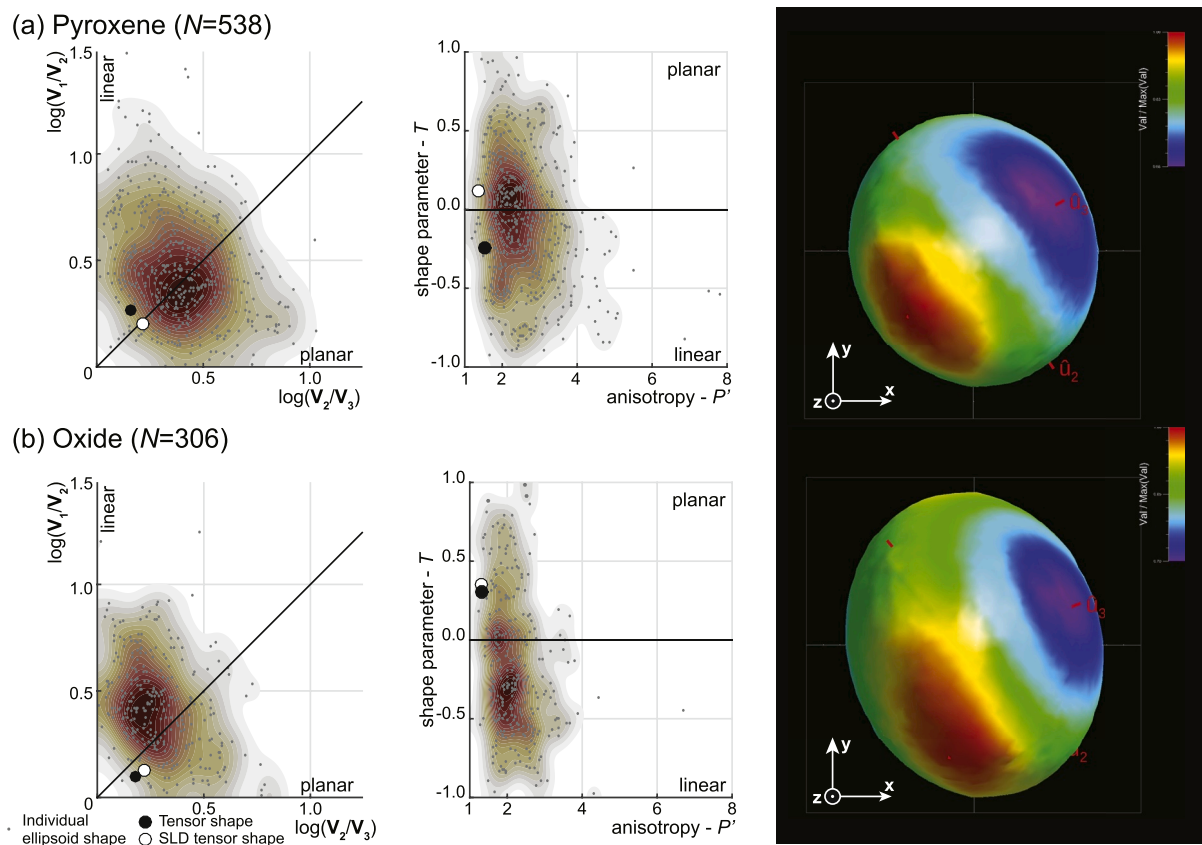


Fig. 9. Fabric diagrams of segmented and manually separated pyroxene (0.5–8.5 mm³) and oxide (0.1–2.4 mm³) grains of Fig. 8de simplified to best-fit ellipsoids. The black filled tensor shape parameters reported in the Ramsay and Jelínek plots derive from the compiled linear fabric tensor, the white filled tensor shape parameters derive from the SLD fabric tensor. Rightmost images are star length distribution diagrams calculated on Blob3D-segmented images using Quant3D (Ketcham, 2005a) in sample reference frame. *N*: number of ellipsoids used for calculations. Density colour map from Crameri (2018). (For interpretation of the references to colour in this figure legend, the reader is referred to the Web version of this article.)

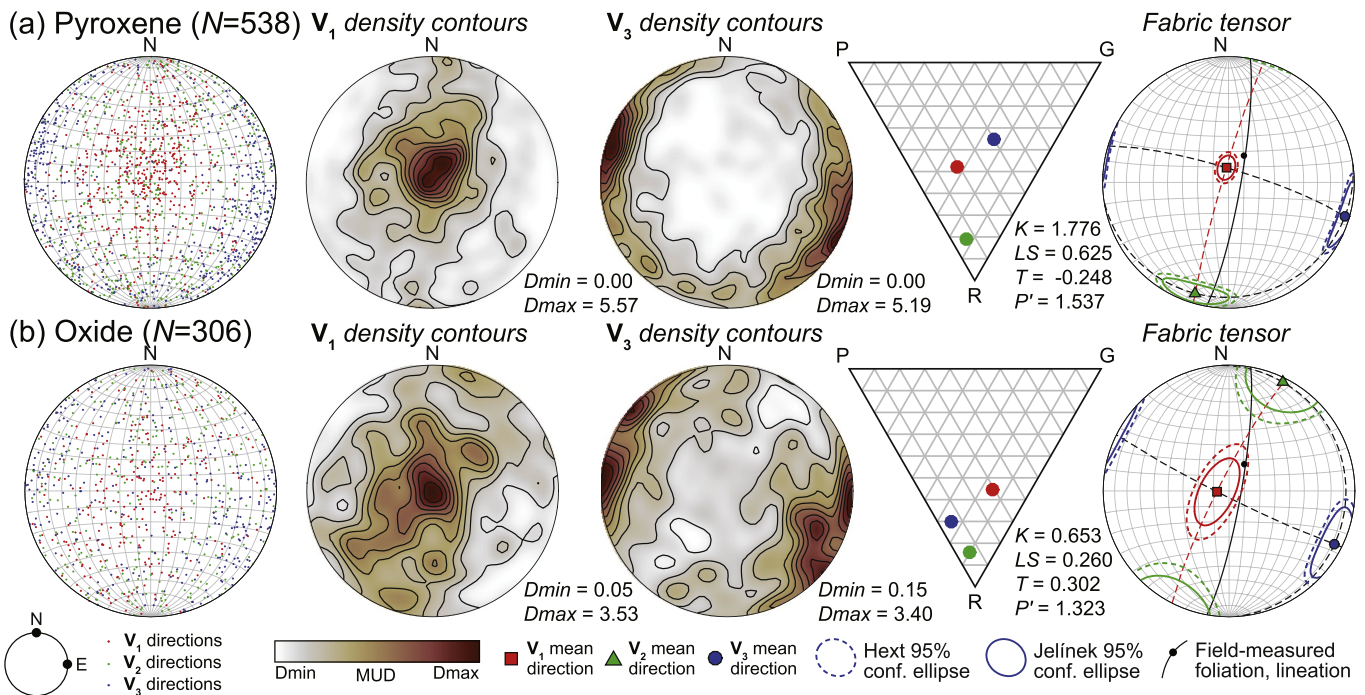


Fig. 10. Orientation distribution of segmented and manually separated (a) pyroxene (0.5–8.5 mm³) and (b) oxide (0.1–2.4 mm³) grains simplified to best-fit ellipsoids. Raw ellipsoids V₁ and V₃ orientation densities are represented in multiples of uniform distribution (MUD), analysed and contoured using TomoFab. Orientation data (equal area lower hemisphere spherical projection) are in the geographic reference frame. The red dashed line highlights the V₁–V₂ plane, i.e., the foliation defined by the SPO; the lineation corresponds to the direction of V₁. Statistics performed with a linear fabric tensor and both Hext (dashed) and Jelínek (solid) confidence estimates at 95% level of confidence. N: number of ellipsoids used for calculations. The solid black line and point reports the field-measured foliation and lineation. Density colour map from Cramerí (2018). (For interpretation of the references to colour in this figure legend, the reader is referred to the Web version of this article.)

Table 2

Summary of fabric parameters and orientation derived from the analysis of linear fabric tensors constructed using manually or automatically separated blobs. See Figs. 9–10 and Appendix A for related diagrams.

	Separation	N	K	LS	T	P'	Foliation	Lineation
Pyroxene	manual	538	1.776	0.625	-0.248	1.537	286/86	352/80
	automatic	658	1.209	0.526	-0.103	1.468	287/86	342/83
Oxide	manual	306	0.653	0.260	0.302	1.323	297/83	267/82
	automatic	260	0.798	0.275	0.108	1.400	301/82	301/82

of the various mineralogical phases (Table 2). Notably, the oxide grain population, although being linear to plano-linear in general, the fabric they define is planar to plano-linear showing that they behave as passive markers of the deformation – i.e., individual grain shape does not always translate deformation regimes.

6. Conclusion

We have designed and constructed a versatile fabric tensor analysis tool to characterise rock fabrics using segmented micro-computed tomography datasets. We defined the linear fabric tensor and the quadratic fabric tensor using the sum of the orientation tensors of the three characteristic axes of grains (simplified to best fit ellipsoids) multiplied by the length or squared length of each axis, respectively. The use of the fabric tensor allows calculation of three orthogonal mean principal axes, their elliptical cones of confidence and the two main parameters relevant to rock fabric quantitative characterisation: the fabric ellipsoid shape and the degree of anisotropy. This approach is implemented in TomoFab, an open-source MATLAB package that is

freely available for download. The method permits quantitative comparison of rock fabrics of different samples imaged by micro-computed tomography, but also to fabrics constrained by other independent methods (EBSD, AMS, and seismic anisotropy). The examples described above demonstrate the wide applicability of the method. Ultimately, the software can be more broadly used in Earth and material sciences and, potentially, in other fields when considering analyses of material fabrics and porosity.

7. Computer code availability

TomoFab is an open source MATLAB package available for download at <https://github.com/benpetri/tomofab>. TomoFab is developed under a GNU licence by Benoît PETRI (see corresponding author information). The code runs on multiple platforms using MATLAB R2015a and newer versions without additional specific toolboxes.

Declaration of competing interest

The authors declare that they have no known competing financial interests or personal relationships that could have appeared to influence the work reported in this paper.

Acknowledgments

This work was supported by the University of Lausanne and the University of Strasbourg and by an ExxonMobil research grant to BP. BA received funding for this project from the Swedish Research Council grant 2018–03414. MP acknowledges the Ambizione Fellowship (PZ00P2_168166), supported by the Swiss National Science Foundation, for fieldwork and rock sampling in the Ivrea-Verbano Zone (Italy) and rock analysis by μ XCT at UNIL. Pauline Le Maire is thanked for fruitful discussions around orientation data treatment and MATLAB programming. Lukas P. Baumgartner and Benita Putlitz are gratefully thanked for giving access to the UNIL μ XCT facility as well as Othmar Müntener for insightful discussions. We thank Frederick W. Vollmer, the two anonymous reviewers, as well as the Editor-in-chief Dario Grana and the Associate Editor Eileen Martin for their helpful comments and editorial handling.

Appendix A. Supplementary data

Supplementary data to this article can be found online at <https://doi.org/10.1016/j.cageo.2020.104444>.

References

- Bascou, J., Barruol, G., Vauchez, A., Mainprice, D., Egyrio-Silva, M., 2001. EBSD-measured lattice-preferred orientations and seismic properties of eclogites. *Tectonophysics* 342, 61–80.
- Benn, D.I., 1994. Fabric shape and the interpretation of sedimentary fabric data. *SEPM J. Sediment. Res.* 64A <https://doi.org/10.1306/D4267F05-2B26-11D7-8648000102C1865D>.
- Benn, K., Allard, B., 1989. Preferred mineral orientations related to magmatic flow in ophiolite layered gabbros. *J. Petrol.* 30, 925–946.
- Bingham, C., 1964. Distributions on the Sphere and on the Projective Plane. PhD Thesis. Yale University.
- Borradaile, G.J., 2003. *Statistics of Earth Science Data: Their Distribution in Time, Space and Orientation*. Springer Science & Business Media.
- Borradaile, G.J., 2001. Magnetic fabrics and petrofabrics: their orientation distributions and anisotropies. *J. Struct. Geol.* 23, 1581–1596. [https://doi.org/10.1016/S0191-8141\(01\)00019-0](https://doi.org/10.1016/S0191-8141(01)00019-0).
- Borradaile, G.J., Jackson, J.A., 2010. Structural geology, petrofabrics and magnetic fabrics (AMS, AARM, AIRM). *J. Struct. Geol.* 32, 1519–1551.
- Bryon, D.N., Atherton, M.P., Hunter, R.H., 1995. The interpretation of granitic textures from serial thin sectioning, image analysis and three-dimensional reconstruction. *Mineral. Mag.* 59, 203–211. <https://doi.org/10.1180/minmag.1995.059.395.05>.
- Chopin, F., Schulmann, K., Stipská, P., Martelat, J.E.E., Pitra, P., Lexa, O., Petri, B., 2012. Microstructural and metamorphic evolution of a high-pressure granitic orthogneiss during continental subduction (Orlica-Śnieżnik dome, Bohemian Massif). *J. Metamorph. Geol.* 30, 347–376. <https://doi.org/10.1111/j.1525-1314.2011.00970.x>.
- Constable, C., Tauxe, L., 1990. The bootstrap for magnetic susceptibility tensors. *J. Geophys. Res.* 95, 8383. <https://doi.org/10.1029/JB095iB06p08383>.
- Cramer, F., 2018. Scientific colour-maps. Zenodo. <https://doi.org/10.5281/zenodo.1243862>.
- Fisher, N.I., Lewis, T., Embleton, B.J.J., 1993. *Statistical Analysis of Spherical Data*. Cambridge university press.
- Fisher, R., 1953. Dispersion on a sphere. *Proc. R. Soc. A Math. Phys. Eng. Sci.* 217, 295–305. <https://doi.org/10.1098/rspa.1953.0064>.
- Flinn, D., 1962. On folding during three-dimensional progressive deformation. *Q. J. Geol. Soc.* 118, 385–428. <https://doi.org/10.1144/gsjgs.118.1.0385>.
- Harrigan, T.P., Mann, R.W., 1984. Characterization of microstructural anisotropy in orthotropic materials using a second rank tensor. *J. Mater. Sci.* 19, 761–767. <https://doi.org/10.1007/BF00540446>.
- Heilbronner, R.P., 1992. The autocorrelation function: an image processing tool for fabric analysis. *Tectonophysics* 212, 351–370. [https://doi.org/10.1016/0040-1951\(92\)90300-U](https://doi.org/10.1016/0040-1951(92)90300-U).
- Henry, B., Le Goff, M., 1995. Application de l'extension bivariate de la statistique Fisher aux données d'anisotropie de susceptibilité magnétique: intégration des incertitudes de mesure sur l'orientation des directions principales. *Comptes rendus l'Académie des Sci. Série 2. Sci. la terre des planètes* 320, 1037–1042.
- Hext, G.R., 1963. The estimation of second-order tensors, with related tests and designs. *Biometrika* 50, 353–373. <https://doi.org/10.2307/2333905>.
- Higgins, M.D., 2006. *Quantitative Textural Measurements in Igneous and Metamorphic Petrology*. Cambridge University Press, Cambridge. <https://doi.org/10.1017/CBO9780511535574>.
- Hirt, A.M., Almqvist, B.S.G., 2012. Unraveling magnetic fabrics. *Int. J. Earth Sci.* 101, 613–624. <https://doi.org/10.1007/s00531-011-0664-0>.
- Islam, A., Chevalier, S., Sassi, M., 2018. Structural characterization and numerical simulations of flow properties of standard and reservoir carbonate rocks using microtomography. *Comput. Geosci.* 113, 14–22. <https://doi.org/10.1016/j.cageo.2018.01.008>.
- Jelínek, V., 1981. Characterization of the magnetic fabric of rocks. *Tectonophysics* 79, T63–T67. [https://doi.org/10.1016/0040-1951\(81\)90110-4](https://doi.org/10.1016/0040-1951(81)90110-4).
- Jelínek, V., 1978. Statistical processing of anisotropy of magnetic susceptibility measured on groups of specimens. *Studia Geophys. Geod.* 22, 50–62. <https://doi.org/10.1007/BF01613632>.
- Jerram, D.A., Higgins, M.D., 2007. 3D analysis of rock textures: quantifying igneous microstructures. *Elements* 3, 239–245.
- Ketcham, R.A., 2005a. Three-dimensional grain fabric measurements using high-resolution X-ray computed tomography. *J. Struct. Geol.* 27, 1217–1228. <https://doi.org/10.1016/j.jsg.2005.02.006>.
- Ketcham, R.A., 2005b. Computational methods for quantitative analysis of three-dimensional features in geological specimens. *Geosphere* 1, 32–41. <https://doi.org/10.1130/GES00001.1>.
- Ketcham, R.A., Carlson, W.D., 2001. Acquisition, optimization and interpretation of X-ray computed tomographic imagery: applications to the geosciences. *Comput. Geosci.* 27, 381–400. [https://doi.org/10.1016/S0098-3004\(00\)00116-3](https://doi.org/10.1016/S0098-3004(00)00116-3).
- Launeau, P., Cruden, A.R., 1998. Magmatic fabric acquisition mechanisms in a syenite: results of a combined anisotropy of magnetic susceptibility and image analysis study. *J. Geophys. Res. Solid Earth* 103, 5067–5089. <https://doi.org/10.1029/97JB02670>.
- Launeau, P., Robin, P.-Y.F., 2005. Determination of fabric and strain ellipsoids from measured sectional ellipses—implementation and applications. *J. Struct. Geol.* 27, 2223–2233. <https://doi.org/10.1016/j.jsg.2005.08.003>.
- Launeau, P., Robin, P.-Y.F., 1996. Fabric analysis using the intercept method. *Tectonophysics* 267, 91–119. [https://doi.org/10.1016/S0040-1951\(96\)00091-1](https://doi.org/10.1016/S0040-1951(96)00091-1).
- Lisle, R.J., 1989. The statistical analysis of orthogonal orientation data. *J. Geol.* 97, 360–364.
- Macente, A., Fusses, F., Menegon, L., Xiao, X., John, T., 2017. The strain-dependent spatial evolution of garnet in a high-*P* ductile shear zone from the Western Gneiss Region (Norway): a synchrotron X-ray microtomography study. *J. Metamorph. Geol.* 35, 565–583. <https://doi.org/10.1111/jmg.12245>.
- Mardia, K.V., Jupp, P.E., 2009. *Directional Statistics*. John Wiley & Sons.
- Moreno Chávez, G., Castillo Rivera, F., Sarocchi, D., Borselli, L., Rodríguez-Sedano, L.A., 2018. FabricS: a user-friendly, complete and robust software for particle shape-fabric analysis. *Comput. Geosci.* 115, 20–30. <https://doi.org/10.1016/j.cageo.2018.02.005>.
- Nicolas, A., 1992. Kinematics in magmatic rocks with special reference to gabbros. *J. Petrol.* 33, 891–915. <https://doi.org/10.1093/petrology/33.4.891>.
- Odgaard, A., 1997. Three-dimensional methods for quantification of cancellous bone architecture. *Bone* 20, 315–328. [https://doi.org/10.1016/S8756-3282\(97\)00007-0](https://doi.org/10.1016/S8756-3282(97)00007-0).
- Odgaard, A., Kabel, J., van Rietbergen, B., Dalstra, M., Huiskes, R., 1997. Fabric and elastic principal directions of cancellous bone are closely related. *J. Biomech.* 30, 487–495. [https://doi.org/10.1016/S0021-9290\(96\)00177-7](https://doi.org/10.1016/S0021-9290(96)00177-7).
- Petri, B., Skrzypiek, E., Mohn, G., Mateeva, T., Robion, P., Schulmann, K., Manatschal, G., Müntener, O., 2018. Mechanical anisotropies and mechanisms of mafic magma ascent in the middle continental crust: the Sondalo magmatic system (N Italy). *GSA Bull.* 130, 331–352. <https://doi.org/10.1130/B31693.1>.
- Prior, D.J., Boyle, A.P., Brenker, F., Cheadle, M.C., Day, A., Lopez, G., Peruzzo, L., Potts, G.J., Reddy, S., ans Nick, E., Timms, R.S., Trimby, P., Wheeler, J., Zetterström, L., 1999. The application of electron backscatter diffraction and orientation contrast imaging in the SEM to textural problems in rocks. *Am. Mineral.* 84, 1741–1759.
- Ramsay, J.G., 1967. *Folding and Fracturing of Rock*. McGraw-Hill, New York.
- Robin, P.-Y.F., 2002. Determination of fabric and strain ellipsoids from measured sectional ellipses — theory. *J. Struct. Geol.* 24, 531–544. [https://doi.org/10.1016/S0191-8141\(01\)00081-5](https://doi.org/10.1016/S0191-8141(01)00081-5).
- Scheidegger, A.E., 1965. On the statistics of the orientation of bedding planes, grain axes, and similar sedimentological data. *U. S. Geol. Surv. Prof. Pap.* 525, 164–167.
- Schöpa, A., Floess, D., de Saint Blanquat, M., Annen, C., Launeau, P., 2015. The relation between magnetite and silicate fabric in granulites of the Adamello Batholith. *Tectonophysics* 642, 1–15. <https://doi.org/10.1016/j.tecto.2014.11.022>.
- Shan, Y., 2008. An analytical approach for determining strain ellipsoids from measurements on planar surfaces. *J. Struct. Geol.* 30, 539–546. <https://doi.org/10.1016/j.jsg.2006.12.004>.
- Smit, Schneider, Odgaard, 1998. Star length distribution: a volume-based concept for the characterization of structural anisotropy. *J. Microsc.* 191, 249–257. <https://doi.org/10.1046/j.1365-2818.1998.00394.x>.
- Som, S.M., Hagadorn, J.W., Thelen, W.A., Gillespie, A.R., Catling, D.C., Buick, R., 2013. Quantitative discrimination between geological materials with variable density contrast by high resolution X-ray computed tomography: an example using amygdale size-distribution in ancient lava flows. *Comput. Geosci.* 54, 231–238. <https://doi.org/10.1016/j.cageo.2012.11.019>.
- Starnoni, M., Pokrajac, D., Neilson, J.E., 2017. Computation of fluid flow and pore-space properties estimation on micro-CT images of rock samples. *Comput. Geosci.* 106, 118–129. <https://doi.org/10.1016/j.cageo.2017.06.009>.
- Tauxe, L., 2003. *Paleomagnetic Principles and Practice, Modern Approaches in Geophysics*. Kluwer Academic Publishers, Dordrecht. <https://doi.org/10.1007/0-306-48128-6>.

- Titschack, J., Baum, D., Matsuyama, K., Boos, K., Färber, C., Kahl, W.-A., Ehrig, K., Meinel, D., Soriano, C., Stock, S.R., 2018. Ambient occlusion – a powerful algorithm to segment shell and skeletal intrapores in computed tomography data. *Comput. Geosci.* 115, 75–87. <https://doi.org/10.1016/j.cageo.2018.03.007>.
- Ulrich, S., Mainprice, D., 2005. Does cation ordering in omphacite influence development of lattice-preferred orientation? *J. Struct. Geol.* 27, 419–431. <https://doi.org/10.1016/j.jsg.2004.11.003>.
- Vollmer, F.W., 1995. C program for automatic contouring of spherical orientation data using a modified Kamb method. *Comput. Geosci.* 21, 31–49. [https://doi.org/10.1016/0098-3004\(94\)00058-3](https://doi.org/10.1016/0098-3004(94)00058-3).
- Vollmer, F.W., 1990. An application of eigenvalue methods to structural domain analysis. *Geol. Soc. Am. Bull.* 102, 786–791.
- Vontobel, P., Lehmann, E.H., Hassanein, R., Frei, G., 2006. Neutron tomography: method and applications. *Phys. B Condens. Matter* 385–386, 475–480. <https://doi.org/10.1016/j.physb.2006.05.252>.
- Watson, G.S., 1966. The statistics of orientation data. *J. Geol.* 74, 786–797.
- Watson, G.S., Irving, E., 1957. Statistical methods in rock magnetism. *Geophys. J. Int.* 7, 289–300. <https://doi.org/10.1111/j.1365-246X.1957.tb02882.x>.
- Werner, T., 1997. Experimental designs for determination of the anisotropy of remanence-test of the efficiency of least-square and bootstrap methods applied to metamorphic rocks from southern Poland. *Phys. Chem. Earth* 22, 131–136. [https://doi.org/10.1016/S0079-1946\(97\)00090-6](https://doi.org/10.1016/S0079-1946(97)00090-6).
- Whitehouse, W.J., 1974. The quantitative morphology of anisotropic trabecular bone. *J. Microsc.* 101, 153–168. <https://doi.org/10.1111/j.1365-2818.1974.tb03878.x>.
- Woodcock, N.H., 1977. Specification of fabric shapes using an eigenvalue method. *Geol. Soc. Am. Bull.* 88, 1231. [https://doi.org/10.1130/0016-7606\(1977\)88<1231:SOFSUA>2.0.CO;2](https://doi.org/10.1130/0016-7606(1977)88<1231:SOFSUA>2.0.CO;2).