



HAL
open science

On the epigenetic origin of cancer stem cells

Audrey Vincent, Isabelle van Seuningen

► **To cite this version:**

Audrey Vincent, Isabelle van Seuningen. On the epigenetic origin of cancer stem cells. *Biochimica et Biophysica Acta (BBA) - Reviews on Cancer*, 2012, 10.1016/j.bbcan.2012.03.009 . hal-02905665

HAL Id: hal-02905665


<https://hal.science/hal-02905665>

Submitted on 29 Sep 2020

HAL is a multi-disciplinary open access archive for the deposit and dissemination of scientific research documents, whether they are published or not. The documents may come from teaching and research institutions in France or abroad, or from public or private research centers.

L'archive ouverte pluridisciplinaire **HAL**, est destinée au dépôt et à la diffusion de documents scientifiques de niveau recherche, publiés ou non, émanant des établissements d'enseignement et de recherche français ou étrangers, des laboratoires publics ou privés.

AUTHOR QUERY FORM

 ELSEVIER	Journal: BBACAN Article Number: 87852	Please e-mail or fax your responses and any corrections to: E-mail: corrections.essd@elsevier.spitech.com Fax: +1 619 699 6721
---	--	--

Dear Author,

Please check your proof carefully and mark all corrections at the appropriate place in the proof (e.g., by using on-screen annotation in the PDF file) or compile them in a separate list. Note: if you opt to annotate the file with software other than Adobe Reader then please also highlight the appropriate place in the PDF file. To ensure fast publication of your paper please return your corrections within 48 hours.

For correction or revision of any artwork, please consult <http://www.elsevier.com/artworkinstructions>.

Any queries or remarks that have arisen during the processing of your manuscript are listed below and highlighted by flags in the proof. Click on the 'Q' link to go to the location in the proof.

Location in article	Query / Remark: click on the Q link to go Please insert your reply or correction at the corresponding line in the proof
Q1	Please confirm that given names and surnames have been identified correctly.
Q2	Please provide for the significance of Table 1 entries in italics emphasis.
Q3	Sentence was slightly modified; please check if appropriate.
Q4, Q5	Please supply the year of publication.
Q6	Please provide the volume number and page range for the bibliography in Ref. [57].
Q7	Please provide the volume number and page range for the bibliography in Ref. [78].

Thank you for your assistance.



Contents lists available at SciVerse ScienceDirect

Biochimica et Biophysica Acta

journal homepage: www.elsevier.com/locate/bbacan

Review

On the epigenetic origin of cancer stem cells

Audrey Vincent, Isabelle Van Seuningens*

Inserm, UMR837, Jean-Pierre Aubert Research Center, Team 5 "Mucins, epithelial differentiation and carcinogenesis", Lille, France

Université Lille Nord de France, 1 Place de Verdun, 59045 Lille cedex, France

Centre Hospitalier Régional et Universitaire de Lille, Place de Verdun, 59037 Lille cedex, France

ARTICLE INFO

Article history:

Received 2 December 2011

Received in revised form 9 March 2012

Accepted 10 March 2012

Available online xxxx

Keywords:

Cancer

Cancer stem cell

Epigenetics

Differentiation

DNA methylation

Histone modifications

ABSTRACT

Epigenetic mechanisms are the key component of the dynamic transcriptional programming that occurs along the process of differentiation from normal stem cells to more specialized cells. In the development of cancer and according to the cancer stem cell model, aberrant epigenetic changes may ensure the property of cancer cells to switch cancer stem cell markers on and off in order to generate a heterogeneous population of cells. The tumour will then be composed of tumourigenic (cancer stem cells) and non-tumourigenic (the side population that constitutes the bulk of the tumour) cells. Characterizing epigenetic landscapes may thus help discriminate aberrant marks (good candidates for tumour detection) from cancer stem cell specific profiles. In this review, we will give some insights about what epigenetics can teach us about the origin of cancer stem cells. We will also discuss how identification of epigenetic reprogramming may help designing new drugs that will specifically target cancer stem cells.

© 2012 Published by Elsevier B.V.

Contents

1. Introduction—what is epigenetics?	0
2. The role of epigenetic changes in normal embryonic and adult stem cell differentiation	0
3. The cancer stem cell hypothesis and the establishment of an epigenetic tumour hierarchy	0
4. The origin of CSC: what may we learn from epigenetic landscapes?	0
5. Implications for cancer therapy	0
6. Conclusion and perspectives	0
Acknowledgements	0
References	0

1. Introduction—what is epigenetics?

Epigenetics define heritable changes in the pattern of gene expression that are not mediated by alterations in the primary nucleotide gene sequence [1]. Among these stable but reversible changes, DNA methylation and specific post-translational modifications on NH₂-terminal histone tails are key mechanisms that control chromatin compacting. DNA methylation is almost entirely limited to CpG dinucleotides while

histone modifications include a variety of modifications including acetylation, methylation, phosphorylation, ubiquitination, biotinylation, and SUMOylation. Crosstalks between the numerous writers of the epigenetic code (i.e. DNA methyltransferases, histone acetyltransferases, deacetylases, methyltransferases, demethylases, etc.) define whether genes are activated or repressed [2]. Acetylation of histones H3 and H4 is mostly associated with gene expression. On the contrary, DNA methylation, di- and trimethylation of H3 lysine 9 (H3K9) and trimethylation of H3K27 elicit the compaction of chromatin leading to gene silencing through the recruitment of heterochromatin protein 1 (HP1) and polycomb group (PcG) proteins.

Adding a new layer of complexity to the epigenetic machinery, microRNAs (miRNA) known to target the 3'-untranslated regions (3'-UTR) of mRNA transcripts for degradation or translation repression [3,4], have also recently been shown in human cells to trigger transcriptional silencing via chromatin remodelling [5].

Abbreviations: ESC, embryonic stem cell; CSC, cancer stem cell; HP1, heterochromatin protein 1; PcG, polycomb group protein; HDAC, histone deacetylase; DNMT, DNA methyltransferase; BMI-1, B cell Moloney murine leukemia virus Insertion region

* Corresponding author at: Inserm UMR837, Jean-Pierre Aubert Research Center, Team 5 "Mucins, epithelial differentiation and carcinogenesis", Rue Polonovski, 59045 Lille, France. Tel.: +33 3 20 29 88 67; fax: +33 3 20 53 85 62.

E-mail address: isabelle.vanseuningens@inserm.fr (I. Van Seuningens).

Epigenetic changes are increasingly regarded as key events in the development of cancer. Aberrant DNA methylation profiles (large-scale hypomethylation [6,7] associated with specific, non-random, hypermethylation of CpG islands [8]), histone modification landscapes and miRNA signatures are early features of carcinogenesis occurring in preneoplastic lesions as well as in adjacent tissues. This has led to the hypothesis that epigenetic changes may predispose cells to malignant transformation or even constitute one of the primary transforming events.

2. The role of epigenetic changes in normal embryonic and adult stem cell differentiation

Both embryonic development and stem cell differentiation in adults involve crucial changes in gene expression profiles. Genes specific for each cell fate are activated while pluripotency factors are silenced, most likely by specific epigenetic rearrangements [9,10].

Embryonic stem cell (ESC) status involves multiple layers of molecular events designed to impose a flexible but precise control over the expression of genes important for development [11]. Several factors of pluripotency and self-renewal have been identified, including OCT4, NANOG, SOX2, FOXD3, REX1, KLF4, c-myc, Lin-28 and the Wnt signalling pathway [12,13].

Along with the expression of these specific factors, ESC harbours a particular epigenetic landscape with a highly dynamic and permissive chromatin. This state is characterized by a distinct DNA methylation profile, the genome of ESC being globally less methylated than differentiated somatic cells, despite a high level of Dnmt3b expression [14,15]. Structural proteins such as HP1 and histone H1 also bind more loosely to chromatin compared to differentiated somatic cells [16,17]. These features are essential for chromatin rearrangements and therefore for global transcriptional programming upon differentiation. More particularly, developmentally regulated genes are characterized by the presence of both active and repressive histone marks. In that case, large genomic regions with trimethylated H3K27 colocalize with smaller regions containing permissive chromatin marks such as methylated H3K4. This chromatin bivalency allows genes encoding specific transcription factors or early differentiation factors to be prepared for rapid transcriptional activation upon differentiation [18].

PcG complexes, on the other hand, act to stabilize a repressive chromatin structure and have been shown to play important roles in the direct silencing of cell differentiation regulators such as Otx2, Satb2 and Tbx3 factors [19]. Among the actors of PcG complexes, the B cell Moloney murine leukemia virus insertion region protein BMI-1 serves as a key regulatory component and plays a critical role in the self-renewal of adult stem cells.

Many miRNAs are specifically expressed during differentiation and embryogenesis. Indeed, ESC expresses a unique set of miRNAs [20]. Moreover, some miRNA precursors (pre-miRNAs) expressed in stem cells are not processed and cleaved into mature miRNA until differentiation is initiated [21]. This strongly suggests that miRNA may have a role in the maintenance of the pluripotent cell state and in the regulation of early mammalian development.

Upon differentiation, ESC sees their epigenome rich in euchromatin evolve toward a more compact heterochromatin structure. A unique DNA methylation profile is acquired, involving methylation in domains mostly found in regions adjacent to CpG islands, named CpG island shores [22,23]. Acquisition of this specific profile reduces cell pluripotency and induces progressive activation of cell- and tissue-specific genes [9]. Heterochromatic markers, such as HP1 proteins modify their localization from a hyperdynamic to a more concentrated state, stabilizing the new cell fate. Thus, the chromatin becomes progressively less permissive. This is characterized by a global decrease in active histone marks such as acetylated histones H3 and H4 [16] and by a specific increase in silencing-associated di- and trimethylated H3K9 [24]. Additionally, bivalent chromatin profiles are

changed either to methylated H3K4 at genes specific for the particular cell fate in which they are engaged or to trimethylated H3K27 at genes specific for other cell fates [18].

For instance, Oct4 and Nanog promoters shift from H3K4me3 to H3K27me3 marks as cells differentiate [25] and undergo rapid DNA methylation upon differentiation *in vitro* [13] whereas they are unmethylated in undifferentiated human ESC [26]. Conversely, Oct4 and Nanog have been shown to interact with each other and associate with Hdac1/2 and Metastasis Associated 1/2, in a complex named NODE (Nanog and Oct4 associated DEacetylase). This complex contains HDAC activity comparable to NuRD complex [27], hence participating in the epigenetic landscaping specific for stemness. On the contrary, because of changes in DNA methylation and histone modifications in regions enriched for their binding sites, these factors can no longer bind the promoters of their target genes in differentiated cells [11,28].

Epigenetic mechanisms are thus a key component of the dynamic regulation of differentiated *versus* stem cell identities.

3. The cancer stem cell hypothesis and the establishment of an epigenetic tumour hierarchy

The clonal model of carcinogenesis, in which genetic and epigenetic changes occur over time to confer a selective growth and survival advantage to individual clones within a tumour, has long prevailed. However, numerous studies conducted in hematologic malignancies as well as in solid tumours have shown that only a proportion of the cancer cells are able to initiate new tumour growth when xenografted in immunodeficient NOD/SCID mice. The percentages of tumour-initiating cells vary from 0.0001% [29] to 25% [30] depending on xenotransplantation assay conditions. In most human cancers (melanomas, sarcomas, blood, brain, lung, gastrointestinal, hepatocellular, prostate, breast and ovarian cancers), a panel of candidate markers has been described that helps distinguish between the relatively rare subpopulations of tumourigenic cells from non-tumourigenic (side population) cancer cells (Table 1; [29]).

This observation has led to the cancer stem cell (CSC) model in which tumours would arise from rare to moderately frequent cells able to initiate a hierarchy of proliferative and progressively differentiating non-tumourigenic cells. This non-tumourigenic population of cells would then form the bulk of the tumour. In this model, CSC would have similar properties to normal adult stem cells or ESC. These properties would include (i) the capacity of self-renewal potentially through asymmetric division, (ii) the use of key regulatory pathways and (iii) the establishment of dynamic epigenetic profiles. These profiles would potentially help discriminate CSC from non-tumourigenic cancer cells. Hence, the tumour hierarchical organization would be comparable to that found in normal tissue, where epigenetic changes trigger both cell differentiation and cell fate. CSC, however, are thought to harbour higher proliferative rates and be capable of causing constant expansion of existing tumours or forming new tumours through metastatic processes. Moreover, the dependence to the stem cell niche may provide a tremendous difference between normal stem cells and CSC. In that case, the normal stem cell niche would control the balance between cell proliferation, self-renewal and differentiation [31], while the CSC niche would govern metastatic colonization [32].

Since clonogenicity implies that cancer cells accumulate selective mutations over a relatively long period of time [33,34], it is rather unlikely that genetic changes throughout a neoplastic clone would result in rapid and extensive proliferation limited to only a subpopulation of cancer cells. Hence, differences between tumourigenic and non-tumourigenic cancer cells may rather reside in their epigenetic profile. Similar to stem cells giving rise to the panel of differentiated cells in each organ, it is thought that CSC may give rise to the cellular heterogeneity of the tumours by initiating epigenetic reprogramming (Fig. 1). Confirming

t1.1 **Table 1**
Epigenetic regulation of cancer stemness markers.

t1.2	Gene	Tumour type	CSC profile	Epigenetic regulation/function	Reference
t1.4	CD34	AML	CD34+/CD38-	415 bp CpG island ^a	
t1.5	CD38	Childhood B-ALL	CD133+/CD19-/CD38-	731 bp CpG island ^a	
t1.6	CD19	ALL and CML-BC	CD34+/CD38-/CD19+ t(12;21)	Chromatin remodeling	[74]
t1.7	CD24	Breast carcinoma	CD44+/CD24 ^{low} /Lin	No differential methylation between CD44+CD24 ⁻ and CD44+CD24 ⁺ breast cancer cells	[75]
t1.8	CD44	Head and neck cancer, prostate, gastric and colorectal carcinoma	CD44+	DNA methylation	[76]
t1.9	Thy-1	Liver cancer	CD90+	DNA methylation	[77]
t1.10	ENG	Renal carcinoma	CD105+		
t1.11	CD117 (c-kit)	Ovarian adenocarcinoma	CD44+/CD117+	DNA methylation and miRNA	[78,79]
t1.12	Prominin-1	Brain tumour, glioblastoma, osteosarcoma, Ewing's sarcoma, endometrial, hepatocellular, colon and lung carcinomas, ovarian and pancreatic adenocarcinoma	CD133+	Histone modifications and DNA methylation	[28,80–82]
t1.13	Bmi-1	Glioblastoma	CD133+/Bmi1+	<i>Polycomb group protein</i>	[83]
t1.14	ALCAM	Colorectal carcinoma	EpCAM ^{hi} /CD44+/CD166+	DNA methylation	[84]
t1.15	NGFR	Melanoma	CD271+	DNA methylation	[85]
t1.16	ALDH1	Colorectal, breast, prostate and squamous cell carcinomas, pancreatic adenocarcinoma, osteosarcoma	ALDH1+	DNA methylation	[86]
t1.17	EpCAM (ESA)	Colon carcinoma and Pancreatic adenocarcinoma	EpCAM ^{hi} /CD44+ and CD44+/CD24 ⁺ /EpCAM+	DNA methylation	[87]
t1.18	ASCL1	Lung carcinoma	CD133+/ASCL1 ^{hi} /ALDH ^{hi}	Histone modifications	[88,89]
Q2t1.19	JARID1B	Melanoma		<i>Histone demethylase</i>	[90]
t1.20	PDPN	Squamous cell carcinoma	Podoplanin+	DNA methylation	[91]
t1.21	TACSTD2	Prostate carcinoma	TROP2+/CD133+	DNA methylation	[92]

^a CpG island information corresponds to the prediction of the UCSC Genome Browser on Human Mar. 2006 (NCBI36/hg18) Assembly with the following criteria: GC content of 50% or greater, length greater than 200 bp, ratio of observed number of CG dinucleotides to the expected number on the basis of the number of Gs and Cs in the segment greater than 0.6.

t1.22

201 this hypothesis, the lower level of DNA methylation and repressive
202 histone marks such as H3K27me3 at tumour suppressor genes have
203 been found in putative breast and liver CSC compared to their
204 “differentiated” counterparts. Therefore, in these tumours, CSC harbours
205 a higher transcriptionally active chromatin state than “differentiated”
206 cancer cells [35]. Similarly, histone modifications such as the marker of
207 activated gene H3K4me3 have been found predominantly in CSC of AML
208 patients at genes characteristic for stemness, including Bmi1, Notch1
209 and Wnt1 [27]. In head and neck squamous cell carcinomas (HNSCC),
210 CD44+ CSC also shows a unique epigenetic signature of 22 genes with
211 a significant distinct methylation pattern compared with CD44⁻ non-
212 stem cells [36].

213 The dynamic property of cancer cells to switch CSC markers off
214 (upon cell proliferation shown by the heterogeneity of the tumour
215 cell population [37]) and back on (as described in experimental
216 models [38]) supports an epigenetic mechanism. Hence, virtually all
217 known CSC markers have been shown to be regulated either by DNA
218 methylation or histone modifications (Table 1), or themselves are
219 chromatin modifying enzymes (such as BMI-1 or JARID1B [39]).
220 Additionally, miR-200c, miR-203 and miR-183, also play an important
221 role in the regulation of stem cell markers, inducing differentiation in
222 pancreatic and colorectal CSC [40]. Consistent with these findings,
223 loss of these stemness-inhibiting miRNA has been shown to lead to
224 the establishment of epigenetic patterns required for the formation
225 and maintenance of breast CSC [41]. Signatures of CSC have therefore
226 been recently established in breast as well as in liver cancers [42,43].

227 Further analyses will be crucial (i) to understand how this
228 potential hierarchy is established and (ii) to discriminate CSC from
229 non-tumourigenic cancer cells based on their epigenetic landscapes.
230 Aberrant DNA methylation and histone marks that have been
231 described in cancer for the past two decades may represent marks
232 present in the bulk of the tumour and as such could be considered as
233 good candidate markers for tumour detection. On the other hand,
234 epigenetic profiles that are specific for CSC may resemble the original
235 cancer-initiating cell, whether it is a dedifferentiated or a normal
236 stem cell, and could be considered as good therapeutic targets.

4. The origin of CSC: what may we learn from epigenetic landscapes? 237

238 Normal adult stem cells are characterized by the capacity to self-
239 renew. Their longevity in the stem cell niche allows normal stem
240 cells, or their immediate progeny, to be the first targets of malignant
241 transformation via accumulation of aberrant epigenetic profiles or
242 genetic mutations [44–46]. Hence, improper activation of the normal
243 self-renewal machinery could be a critical event in cancer initiation.
244 Supporting the hypothesis of normal stem cells being the pre-
245 decessors of CSC, lineage-tracking studies in the colon have shown
246 that long-lived intestinal stem cells are susceptible to cancer-causing
247 mutations [45,47]. Additionally, genes that are targets of PcG proteins
248 and therefore known to be suppressed in normal stem cells show
249 hypermethylation correlated with aging. This locks the cells in an
250 undifferentiated state, therefore making it the first potential step
251 toward malignant transformation [48].

252 Finally, gene expression signatures reminiscent of ESC have been
253 found in various types of cancer especially poorly differentiated cancers,
254 and markers of CSC are usually similar to normal stem cell markers in
255 different organs [49]. For instance, Bmi1 has been described as a marker
256 of both adult normal stem cells and CSC in colon, breast and prostate, as
257 well as in hematopoietic and neuronal stem cells. In breast cancer, this
258 key regulatory component of the Polycomb Repressive Complex-1,
259 which regulates stem cell proliferation and blocks terminal differenti-
260 ation to more committed cells through regulation of the Hedgehog
261 pathway, is also increased in tumour-initiating cells [50].

262 Nevertheless, it is also interesting to note that CSC differs from
263 normal adult stem cells in that they do not retain the bivalent chromatin
264 pattern [35]. Additionally, studies analyzing the DNA methylation
265 profile of CSC indicate that epigenetic markers of stemness would
266 resemble the ESC (expression of Dnmt1 and Hdac1) rather than the
267 adult normal stem cell pattern (expression of MLL family of histone
268 methyltransferases) [51].

269 Hence, the hypothesis of cell reprogramming should definitely
270 not be excluded. Indeed, while cellular differentiation has been
271 thought to be unidirectional, several recent studies have shown

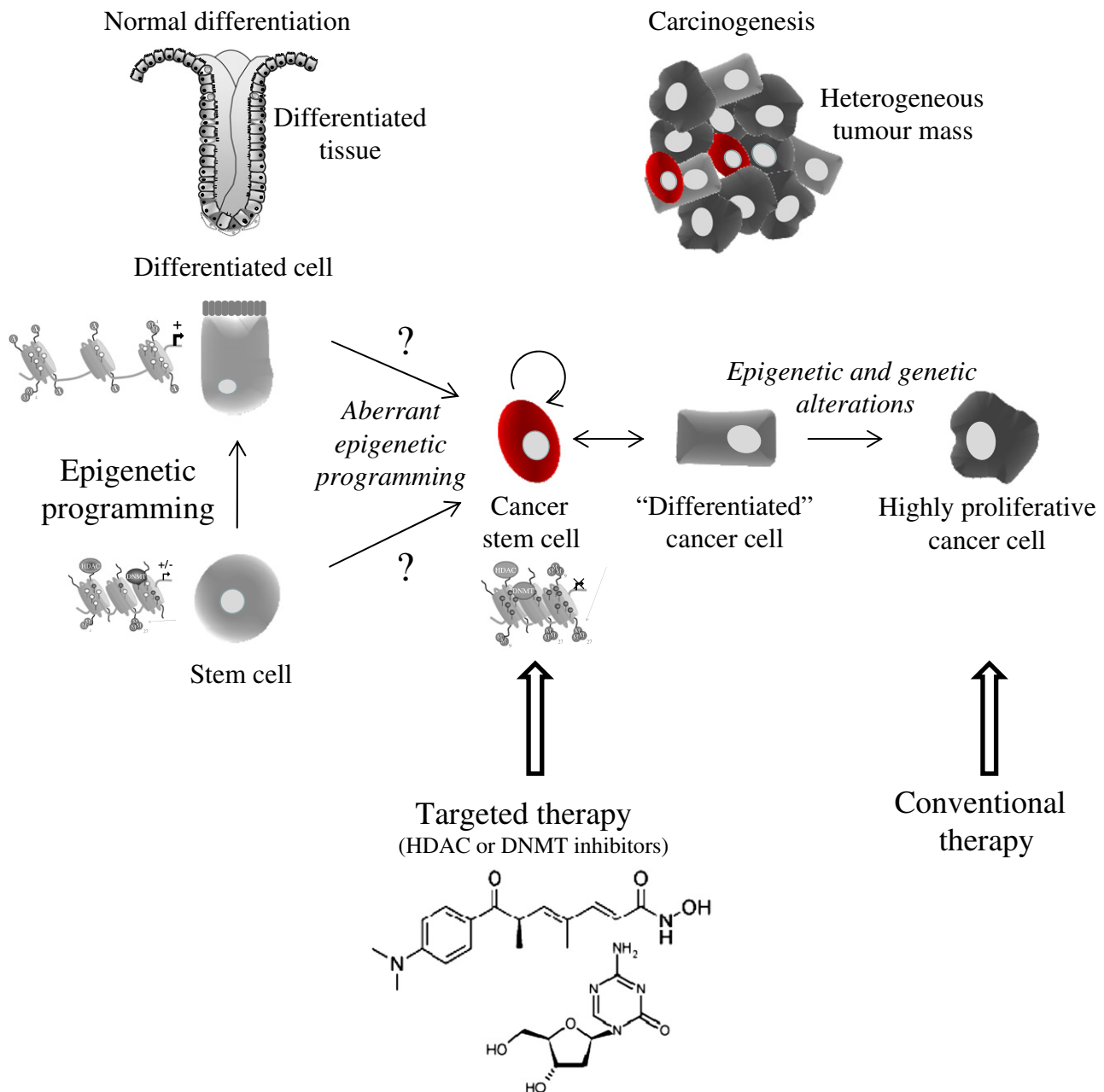


Fig. 1. Normal stem cells versus CSC, an epigenetic change. In this simplified model, aberrant epigenetic programming would trigger either the reactivation of self-renewal in differentiated cells or the initiation of transformation in normal stem cells to give rise to CSC. CSC would in turn give rise to relatively differentiated cancer cells that may acquire additional epigenetic and genetic alterations and lead to highly proliferative cancer cells. CSC, differentiated cancer cells and highly proliferative cancer cells would constitute the heterogeneity of the tumour. Targeted therapy may force CSC to reenter the normal process of differentiation and could represent a relevant addition to conventional therapies that only target highly proliferative cancer cells.

272 that the reexpression of only four genes encoding the transcrip- 286
 273 tion factors c-Myc, Oct4, Sox2 and Klf4 is sufficient to generate 287
 274 pluripotency. Expression of these factors can convert a terminally 288
 275 differentiated cell into a pluripotent cell by erasing the epigenetic 289
 276 pattern associated with cell differentiation. Therefore, epigenetic 290
 277 reprogramming that induces the expression of pluripotency factors 291
 278 in differentiated cells would lead to aberrant stemness and cancer. 292
 279 Supporting this hypothesis, Oct4, c-myc, Sox2 and Klf4 have all been 293
 280 shown to be regulated by epigenetic mechanisms in differentiating 294
 281 [52–54] or neoplastic cells [55]. More recently, Chaffer and collaborators 295
 282 have discovered a striking property of differentiated epithelial breast 296
 283 cells that are able to dedifferentiate and acquire stem-like properties, 297
 284 unveiling a noticeable degree of plasticity of non-stem cell compart- 298
 285 ments [38].

While mouse models and *in vivo* experiments such as xenotrans- 286
 287 plantation assays have brought great insight into the deciphering of 288
 289 the mechanisms of cancer cell growth and metastasis, it is still 289
 290 impossible, in patients, to retrospectively identify the cell-of-origin of 290
 291 naturally occurring cancers. Therefore, it is yet unknown whether CSC 291
 292 originates from normal adult stem cells, more mature progenitors or 291
 293 even from differentiated cells. As discussed above, there is evidence 292
 294 for each model. However, epigenetic events are more likely to 293
 295 represent ideal dynamic changes for cells that enter a carcinogenic 294
 296 path. Indeed, according to the “epigenetic progenitor model of 295
 297 cancer” proposed by Feinberg and collaborators early epigenetic 296
 298 disruption of progenitor cells would disturb the normal balance 297
 299 between undifferentiated and committed cells [56]. The epigenetic 298
 299 progenitor landscape would therefore be reminiscent of the cell-of- 299

origin while the bulk of the tumour would acquire new epigenetic and genetic alterations. The nature of epigenetic alterations involved in CSC generation may strongly depend on the normal cell phenotype from which they arise and cancers would acquire different characteristics according to their origin [57]. Supporting this hypothesis is the fact that transformation of genetically identical but phenotypically different human breast epithelial cells leads to distinct tumour types [58]. This indicates that epigenetic pre-setting greatly influences the type of generated tumour.

Therefore, epigenetic landscapes, if they are maintained through CSC self-renewal, would more likely indicate the exact origin of CSC. Confirming this hypothesis, symmetric DNA methylation patterns have proven to be very informative to deduce the clonal expansion dynamics of CSC and the mechanisms of tumour hierarchy in colorectal cancers [59].

5. Implications for cancer therapy

CSCs are more and more considered as the roots of cancer and therefore identifying and targeting CSC for elimination appears as critical for cancer therapy. Most currently used cancer therapies target fast growing cells. If CSC share, as it is thought, the more slowly cycling characteristics of their normal counterparts, known treatments would rather lead to an enrichment in CSC. Recent studies conducted in epithelial cancers and in melanomas have indeed shown that CSC candidates harbour lower proliferation rates than the bulk of the tumour [39,60–62]. Thus, they are mostly resistant to current treatments, including radiotherapy and conventional chemotherapy [63–65]. Differentiation therapy through epigenetic drugs, such as HDAC or DNMT inhibitors, represents however a particularly interesting and promising approach, as it is known that CSC keeps plasticity for differentiation [65]. For instance, the demethylating agent 5-aza-2'-deoxycytidine has been shown to inhibit self-renewing population of CD34+ cells [66].

These epigenetic drugs have proven valuable as new weapons against cancer, especially leukemia. However, their broad spectrum of inhibition, targeting whole families of enzymes may not be perfectly suited to most solid tumours. This is especially true for the specific targeting of CSC which harbours a peculiar epigenetic landscape with the expression of specific epigenetic regulators or enzymes when compared to the rest of the tumour. More targeted epigenetic-based therapies may thus greatly improve patient outcome, as each epigenetic modifier enzyme could be a potential individual target for therapeutic manipulation [44].

For instance, Bmi-1 is currently considered as a potent novel target for drug discovery [67]. It has been shown that Bmi-1 silencing, either by siRNA or epigenetic drugs such as HDAC inhibitors (sodium butyrate or valproic acid), enhances the sensitivity of cancer cells to chemoradiation and inhibits tumour growth [68]. Additionally, therapies using properties of miRNA to specifically inhibit stemness effectors and CSC markers have provided very promising results. For example, miR-34a inhibits prostate CSC and metastasis by directly repressing CD44 [69], while miR-128 inhibits BMI1 in breast cancer and gliomas [70,71], miR-34a specifically targets Notch in pancreatic cancer [72], and miR-199b-5p negatively regulates HES1 in medulloblastomas [73].

Identifying the epigenetic reprogramming that occurs during the acquisition of CSC properties and understanding the differences between normal adult stem cells and CSC will therefore help designing new drugs that will specifically target CSC without altering tissue homeostasis.

6. Conclusion and perspectives

A new challenge in medical science is to determine the origin of cancer resistance to most current therapies. Evidence have been brought that in the battle against cancer, CSC, if they exist, and non-

CSC will both need to be targeted with specific strategies to eliminate both the bulk of a tumour and its potential roots. However, as most studies have focused on entire tumours with heterogeneous cell populations, our knowledge on human CSC, a small population of cells so far only identifiable by their capacity to generate new tumours in immunodeficient mice, remains very limited. This issue will more likely be overcome with the use of new tools such as next generation sequencing that allows genome-wide epigenetic profiling of a single stem cell. Hence, defining the early epigenetic reprogramming or deprogramming that gives rise to the cancer cell population instead of normal differentiated cells will be crucial for the discovery of new therapeutic strategies of cancer.

Acknowledgements

We thank Pr Michael Goggins (Johns Hopkins University, School of Medicine, Baltimore, USA) for critically reading the manuscript. Dr Audrey Vincent is the recipient of a postdoctoral fellowship from the Association pour la Recherche sur le Cancer (ARC). This work is supported by a grant from la Ligue Nationale contre le Cancer (Equipe Labellisée Ligue 2010, IVS). Dr Isabelle Van Seuningen is the recipient of a grant "Contrat Hospitalier de Recherche Translationnelle"/CHRT 2010, AVIESAN.

References

- V.E.A. Russo, R.A. Martienssen, A.D. Riggs, *Epigenetic Mechanisms of Gene Regulation*, Cold Spring Harbor Laboratory Press, New York, 1996.
- H. Santos-Rosa, C. Caldas, *Eur. J. Cancer* 41 (2005) 2381–2402.
- D.P. Bartel, *Cell* 116 (2004) 281–297.
- L. He, G.J. Hannon, *Nat. Rev. Genet.* 5 (2004) 522–531.
- S. Gonzalez, D.G. Pisano, M. Serrano, *Cell Cycle* 7 (2008) 2601–2608.
- A.J. Bannister, P. Zegerman, J.F. Partridge, E.A. Miska, J.O. Thomas, R.C. Allshire, T. Kouzarides, *Nature* 410 (2001) 120–124.
- Y. Schlesinger, R. Strausman, I. Keshet, S. Farkash, M. Hecht, J. Zimmerman, E. Eden, Z. Yakhini, E. Ben-Shushan, B.E. Reubinoff, Y. Bergman, I. Simon, H. Cedar, *Nat. Genet.* 39 (2007) 232–236.
- J.G. Herman, S.B. Baylin, *N. Engl. J. Med.* 349 (2003) 2042–2054.
- N. Hattori, K. Shiota, *FEBS J.* 275 (2008) 1624–1630.
- A. Vincent, I. Van Seuningen, *Differentiation* 78 (2009) 99–107.
- V.V. Lunyak, M.G. Rosenfeld, *Hum. Mol. Genet.* 17 (2008) R28–R36.
- K.S. O'Shea, *Biol. Reprod.* 71 (2004) 1755–1765.
- S. Yeo, S. Jeong, J. Kim, J.S. Han, Y.M. Han, Y.K. Kang, *Biochem. Biophys. Res. Commun.* 359 (2007) 536–542.
- C. Allegrucci, L.E. Young, *Hum. Reprod. Update* 13 (2007) 103–120.
- M. Bibikova, E. Chudin, B. Wu, L. Zhou, E.W. Garcia, Y. Liu, S. Shin, T.W. Plaia, J.M. Auerbach, D.E. Arking, R. Gonzalez, J. Crook, B. Davidson, T.C. Schulz, A. Robins, A. Khanna, P. Sartipy, J. Hyllner, P. Vanguri, S. Savant-Bhonsale, A.K. Smith, A. Chakravarti, A. Maitra, M. Rao, D.L. Barker, J.F. Loring, J.B. Fan, *Genome Res.* 16 (2006) 1075–1083.
- L. Chen, G.Q. Daley, *Hum. Mol. Genet.* 17 (2008) R23–R27.
- P. Collas, A. Noer, S. Timoskainen, *J. Cell. Mol. Med.* 11 (2007) 602–620.
- B.E. Bernstein, T.S. Mikkelsen, X. Xie, M. Kamal, D.J. Huebert, J. Cuff, B. Fry, A. Meissner, M. Wernig, K. Plath, R. Jaenisch, A. Wagschal, R. Feil, S.L. Schreiber, E.S. Lander, *Cell* 125 (2006) 315–326.
- D. Pasini, A.P. Bracken, J.B. Hansen, M. Capillo, K. Helin, *Mol. Cell. Biol.* 27 (2007) 3769–3779.
- H.B. Houbaviy, M.F. Murray, P.A. Sharp, *Dev. Cell* 5 (2003) 351–358.
- A. Rybak, H. Fuchs, L. Smirnova, C. Brandt, E.E. Pohl, R. Nitsch, F.G. Wulczyn, *Nat. Cell Biol.* 10 (2008) 987–993.
- A. Doi, I.H. Park, B. Wen, P. Murakami, M.J. Aryee, R. Irizarry, B. Herb, C. Ladd-Acosta, J. Rho, S. Loewer, J. Miller, T. Schlaeger, G.Q. Daley, A.P. Feinberg, *Nat. Genet.* 41 (2009) 1350–1353.
- R.A. Irizarry, C. Ladd-Acosta, B. Wen, Z. Wu, C. Montano, P. Onyango, H. Cui, K. Gabo, M. Rongione, M. Webster, H. Ji, J.B. Potash, S. Sabuncian, A.P. Feinberg, *Nat. Genet.* 41 (2009) 178–186.
- B. Wen, H. Wu, Y. Shinkai, R.A. Irizarry, A.P. Feinberg, *Nat. Genet.* 41 (2009) 246–250.
- G. Pan, S. Tian, J. Nie, C. Yang, V. Ruotti, H. Wei, G.A. Jonsdottir, R. Stewart, J.A. Thomson, *Cell Stem Cell* 1 (2007) 299–312.
- M.A. Lagarkova, P.Y. Volchkov, A.V. Lyakisheva, E.S. Philonenko, S.L. Kiselev, *Cell Cycle* 5 (2006) 416–420.
- J. Yamazaki, M.R. Estecio, J. Jelinek, D. Graber, Y. Lu, L. Ramagli, S. Liang, S.M. Kornblau, J.P. Issa, *ASH Annual Meeting*, vol. 116, American Society of Hematology, 2010.
- H. You, W. Ding, C.B. Rountree, *Hepatology* 51 (2010) 1635–1644.
- S. Sell, *Am. J. Pathol.* 176 (2010) 2584–494.

- [30] E. Quintana, M. Shackleton, M.S. Sabel, D.R. Fullen, T.M. Johnson, S.J. Morrison, *Nature* 456 (2008) 593–598.
- [31] T.M. Yeung, L.A. Chia, C.M. Kosinski, C.J. Kuo, *Cell. Mol. Life Sci.* 68 (2011) 2513–2523.
- [32] I. Malanchi, A. Santamaria-Martinez, E. Susanto, H. Peng, H.A. Lehr, J.F. Delaloye, J. Huelsken, *Nature* 481 85–9.
- [33] S. Jones, W.D. Chen, G. Parmigiani, F. Diehl, N. Beerenwinkel, T. Antal, A. Traulsen, M.A. Nowak, C. Siegel, V.E. Velculescu, K.W. Kinzler, B. Vogelstein, J. Willis, S.D. Markowitz, *Proc. Natl. Acad. Sci. U. S. A.* 105 (2008) 4283–4288.
- [34] S. Yachida, S. Jones, I. Bozic, T. Antal, R. Leary, B. Fu, M. Kamiyama, R.H. Hruban, J.R. Eshleman, M.A. Nowak, V.E. Velculescu, K.W. Kinzler, B. Vogelstein, C.A. Iacobuzio-Donahue, *Nature* 467 (2010) 1114–1117.
- [35] H. Yasuda, K. Soejima, H. Watanabe, I. Kawada, I. Nakachi, S. Yoda, S. Nakayama, R. Satomi, S. Ikemura, H. Terai, T. Sato, S. Suzuki, Y. Matsuzaki, K. Naoki, A. Ishizaka, *Int. J. Oncol.* 37 (2010) 1537–1546.
- [36] H.H. Zhang, A. Stone, S.A. Schichman, B.R. Smoller, J.Y. Suen, C.Y. Fan, *Mod. Pathol.* 23 (2010) 1266.
- [37] Y.P. Choi, H.S. Shim, M.Q. Gao, S. Kang, N.H. Cho, *Cancer Lett.* 307 (2011) 62–71.
- [38] C.L. Chaffer, I. Brueckmann, C. Scheel, A.J. Kaestli, P.A. Wiggins, L.O. Rodrigues, M. Brooks, F. Reinhardt, Y. Su, K. Polyak, L.M. Arendt, C. Kuperwasser, B. Bierie, R.A. Weinberg, *Proc. Natl. Acad. Sci. U. S. A.* 108 (2011) 7950–7955.
- [39] A. Roesch, M. Fukunaga-Kalabis, E.C. Schmidt, S.E. Zabierowski, P.A. Brafford, A. Vultur, D. Basu, P. Gimotty, T. Vogt, M. Herlyn, *Cell* 141 (2010) 583–594.
- [40] U. Wellner, J. Schubert, U.C. Burk, O. Schmalhofer, F. Zhu, A. Sonntag, B. Waldvogel, C. Vannier, D. Darling, A. zur Hausen, V.G. Brunton, J. Morton, O. Sansom, J. Schuler, M.P. Stemmler, C. Herzberger, U. Hopt, T. Keck, S. Brabletz, T. Brabletz, *Nat. Cell Biol.* 11 (2009) 1487–1495.
- [41] D. Iliopoulos, M. Lindahl-Allen, C. Polytarchou, H.A. Hirsch, P.N. Tsichlis, K. Struhl, *Mol. Cell* 39 (2010) 761–772.
- [42] J.G. Sun, R.X. Liao, J. Qiu, J.Y. Jin, X.X. Wang, Y.Z. Duan, F.L. Chen, P. Hao, Q.C. Xie, Z.X. Wang, D.Z. Li, Z.T. Chen, S.X. Zhang, *J. Exp. Clin. Cancer Res.* 29 (2010) 174.
- [43] R. Li, N. Qian, K. Tao, N. You, X. Wang, K. Dou, *J. Exp. Clin. Cancer Res.* 29 (2010) 169.
- [44] M.R. Alison, S.M. Lim, L.J. Nicholson, *J. Pathol.* 223 (2011) 148–162.
- [45] N. Barker, R.A. Ridgway, J.H. van Es, M. van de Wetering, H. Begthel, M. van den Born, E. Danenberg, A.R. Clarke, O.J. Sansom, H. Clevers, *Nature* 457 (2009) 608–611.
- [46] S.J. Leedham, A.T. Thliveris, R.B. Halberg, M.A. Newton, N.A. Wright, *Stem Cell Rev.* 1 (2005) 233–241.
- [47] L. Zhu, P. Gibson, D.S. Currel, Y. Tong, R.J. Richardson, I.T. Bayazitov, H. Poppleton, S. Zakharenko, D.W. Ellison, R.J. Gilbertson, *Nature* 457 (2009) 603–607.
- [48] A.E. Teschendorff, U. Menon, A. Gentry-Maharaj, S.J. Ramus, D.J. Weisenberger, H. Shen, M. Campan, H. Noushmehr, C.G. Bell, A.P. Maxwell, D.A. Savage, E. Mueller-Holzner, C. Marth, G. Kocjan, S.A. Gayther, A. Jones, S. Beck, W. Wagner, P.W. Laird, I.J. Jacobs, M. Widschwendter, *Genome Res.* 20 (2010) 440–446.
- [49] L.A. Mathews, F. Crea, W.L. Farrar, *Differentiation* 78 (2009) 1–17.
- [50] S. Liu, G. Dontu, I.D. Mantle, S. Patel, N.S. Ahn, K.W. Jackson, P. Suri, M.S. Wicha, *Cancer Res.* 66 (2006) 6063–6071.
- [51] D.J. Wong, H. Liu, T.W. Ridky, D. Cassarino, E. Segal, H.Y. Chang, *Cell Stem Cell* 2 (2008) 333–344.
- [52] J.Y. Li, M.T. Pu, R. Hirasawa, B.Z. Li, Y.N. Huang, R. Zeng, N.H. Jing, T. Chen, E. Li, H. Sasaki, G.L. Xu, *Mol. Cell Biol.* 27 (2007) 8748–8759.
- [53] S. Barrand, I.S. Andersen, P. Collas, *Biochem. Biophys. Res. Commun.* 401 611–7.
- [54] L. Laurent, E. Wong, G. Li, T. Huynh, A. Tsigros, C.T. Ong, H.M. Low, K.W. Kin Sung, I. Rigoutsos, J. Loring, C.L. Wei, *Genome Res.* 20 (2010) 320–331.
- [55] C. Zhang, Z. Li, Y. Cheng, F. Jia, R. Li, M. Wu, K. Li, L. Wei, *Clin. Cancer Res.* 13 (2007) 944–952.
- [56] A.P. Feinberg, R. Ohlsson, S. Henikoff, *Nat. Rev. Genet.* 7 (2006) 21–33.
- [57] P. Scaffidi, T. Misteli, *Cold Spring Harb. Symp. Quant. Biol.* (2010).
- [58] T.A. Ince, A.L. Richardson, G.W. Bell, M. Saitoh, S. Godar, A.E. Karnoub, J.D. Iglehart, R.A. Weinberg, *Cancer Cell* 12 (2007) 160–170.
- [59] K.D. Siegmund, P. Marjoram, Y.J. Woo, S. Tavares, D. Shibata, *Proc. Natl. Acad. Sci. U. S. A.* 106 (2009) 4828–4833.
- [60] J.L. Dembinski, S. Krauss, *Clin. Exp. Metastasis* 26 (2009) 611–623.
- [61] M.Q. Gao, Y.P. Choi, S. Kang, J.H. Youn, N.H. Cho, *Oncogene* 29 (2010) 2672–2680.
- [62] S. Pece, D. Tosoni, S. Confalonieri, G. Mazzarol, M. Vecchi, S. Ronzoni, L. Bernard, G. Viale, P.G. Pelicci, P.P. Di Fiore, *Cell* 140 (2010) 62–73.
- [63] S. Bao, Q. Wu, R.E. McLendon, Y. Hao, Q. Shi, A.B. Hjelmeland, M.W. Dewhirst, D.D. Bigner, J.N. Rich, *Nature* 444 (2006) 756–760.
- [64] S.P. Hong, J. Wen, S. Bang, S. Park, S.Y. Song, *Int. J. Cancer* 125 (2009) 2323–2331.
- [65] R. Roy, P. Willan, R. Clarke, G. Farnie, *Breast Cancer Res.* 12 (Suppl. 1) (2010) O5.
- [66] Z. Hu, S. Negrotto, X. Gu, R. Mahfouz, K.P. Ng, Q. Ebrahem, E. Copelan, H. Singh, J.P. Maciejewski, Y. Sauntharajah, *Mol. Cancer Ther.* 9 (2010) 1536–1543.
- [67] L. Cao, J. Bombard, K. Cintron, J. Sheedy, M.L. Weetall, T.W. Davis, *J. Cell. Biochem.* (2011).
- [68] Y.C. Chen, C.J. Chang, H.S. Hsu, Y.W. Chen, L.K. Tai, L.M. Tseng, G.Y. Chiou, S.C. Chang, S.Y. Kao, S.H. Chiou, W.L. Lo, *Oral Oncol.* 46 (2009) 158–165.
- [69] C. Liu, K. Kelnar, B. Liu, X. Chen, T. Calhoun-Davis, H. Li, L. Patrawala, H. Yan, C. Jeter, S. Honorio, J.F. Wiggins, A.G. Bader, R. Fagin, D. Brown, D.G. Tang, *Nat. Med.* 17 (2011) 211–215.
- [70] J. Godlewski, M.O. Nowicki, A. Bronisz, S. Williams, A. Otsuki, G. Nuovo, A. Raychaudhury, H.B. Newton, E.A. Chiocca, S. Lawler, *Cancer Res.* 68 (2008) 9125–9130.
- [71] Y. Zhu, F. Yu, Y. Jiao, J. Feng, W. Tang, H. Yao, C. Gong, J. Chen, F. Su, Y. Zhang, E. Song, *Clin. Cancer Res.* 17 (2011) 7105–7115.
- [72] D. Nalls, S.N. Tang, M. Rodova, R.K. Srivastava, S. Shankar, *PLoS One* 6 (2011) e24099.
- [73] L. Garzia, I. Andolfo, E. Cusanelli, N. Marino, G. Petrosino, D. De Martino, V. Esposito, A. Galeone, L. Navas, S. Esposito, S. Gargiulo, S. Fattet, V. Donofrio, G. Cinalli, A. Brunetti, L.D. Vecchio, P.A. Northcott, O. Delattre, M.D. Taylor, A. Iolascon, M. Zollo, *PLoS One* 4 (2009) e4998.
- [74] K. Walter, P.N. Cockerill, R. Barlow, D. Clarke, M. Hoogenkamp, G.A. Follows, S.J. Richards, M.J. Cullen, C. Bonifer, H. Tagoh, *Oncogene* 29 (2010) 2927–2937.
- [75] M.J. Meyer, J.M. Fleming, M.A. Ali, M.W. Pesesky, E. Ginsburg, B.K. Vonderhaar, *Breast Cancer Res.* 11 (2009) R82.
- [76] N.S. Verkaik, J. Trapman, J.C. Romijn, T.H. Van der Kwast, G.J. Van Steenbrugge, *Int. J. Cancer* 80 (1999) 439–443.
- [77] Y.Y. Sanders, A. Pardo, M. Selman, G.J. Nuovo, T.O. Tollefsbol, G.P. Siegal, J.S. Hagood, *Am. J. Respir. Cell Mol. Biol.* 39 (2008) 610–618.
- [78] X.N. Gao, J. Lin, Y.H. Li, L. Gao, X.R. Wang, W. Wang, H.Y. Kang, G.T. Yan, L.L. Wang, L. Yu, *Oncogene* (2011).
- [79] K. Koinuma, R. Kaneda, M. Toyota, Y. Yamashita, S. Takada, Y.L. Choi, T. Wada, M. Okada, F. Konishi, H. Nagai, H. Mano, *Carcinogenesis* 26 (2005) 2078–2085.
- [80] T. Baba, P.A. Convery, N. Matsumura, R.S. Whitaker, E. Kondoh, T. Perry, Z. Huang, R.C. Bentley, S. Mori, S. Fujii, J.R. Marks, A. Berchuck, S.K. Murphy, *Oncogene* 28 (2009) 209–218.
- [81] A.M. Friel, L. Zhang, M.D. Curley, V.A. Therrien, P.A. Sergeant, S.E. Belden, D.R. Borger, G. Mohapatra, L.R. Zukerberg, R. Foster, B.R. Rueda, *Reprod. Biol. Endocrinol.* 8 (2010) 147.
- [82] P. Schiapparelli, M. Enguita-German, J. Balbuena, J.A. Rey, P. Lazcoz, J.S. Castresana, *Oncol. Rep.* 24 (2010) 1355–1362.
- [83] A. Tong, L. Wu, Q. Lin, Q.C. Lau, X. Zhao, J. Li, P. Chen, L. Chen, H. Tang, C. Huang, Y.Q. Wei, *Proteomics* 8 (2008) 2012–2023.
- [84] J.A. King, F. Tan, F. Mbeunkui, Z. Chambers, S. Cantrell, H. Chen, D. Alvarez, L.A. Shevde, S.F. Ofori-Aquah, *Mol. Cancer* 9 (2010) 266.
- [85] M. Kanduri, N. Cahill, H. Goransson, C. Enstrom, F. Ryan, A. Isaksson, R. Rosenquist, *Blood* 115 (2010) 296–305.
- [86] A. Tong, L. Gou, Q.C. Lau, B. Chen, X. Zhao, J. Li, H. Tang, L. Chen, M. Tang, C. Huang, Y.Q. Wei, *J. Proteome Res.* 8 (2009) 1037–1046.
- [87] G. Yu, X. Zhang, H. Wang, D. Rui, A. Yin, G. Qiu, Y. He, *Oncol. Rep.* 20 (2008) 1061–1067.
- [88] R.R. Williams, V. Azuara, P. Perry, S. Sauer, M. Dvorkina, H. Jorgensen, J. Roix, P. McQueen, T. Misteli, M. Merckenschlager, A.G. Fisher, *J. Cell Sci.* 119 (2006) 132–140.
- [89] B. Jin, B. Yao, J.L. Li, C.R. Fields, A.L. Delmas, C. Liu, K.D. Robertson, *Cancer Res.* 69 (2009) 7412–7421.
- [90] Y. Xiang, Z. Zhu, G. Han, X. Ye, B. Xu, Z. Peng, Y. Ma, Y. Yu, H. Lin, A.P. Chen, C.D. Chen, *Proc. Natl. Acad. Sci. U. S. A.* 104 (2007) 19226–19231.
- [91] B. Hantusch, R. Kalt, S. Krieger, C. Puri, D. Kerjaschki, *BMC Mol. Biol.* 8 (2007) 20.
- [92] I. Ibragimova, I. Ibanez de Caceres, A.M. Hoffman, A. Potapova, E. Dulaimi, T. Al-Saleem, G.R. Hudes, M.F. Ochs, P. Cairns, *Cancer Prev. Res. (Phila.)* 3 (2010) 1084–1092.