



HAL
open science

Dual phylogenetic staining protocol for simultaneous analysis of yeast and bacteria in artworks

Marina González-Pérez, Catarina Brinco, Ricardo Vieira, Tânia Rosado, Guilhem Mauran, Antonio Pereira, António Candeias, Ana Teresa Caldeira

► **To cite this version:**

Marina González-Pérez, Catarina Brinco, Ricardo Vieira, Tânia Rosado, Guilhem Mauran, et al.. Dual phylogenetic staining protocol for simultaneous analysis of yeast and bacteria in artworks. *Applied physics. A, Materials science & processing*, 2017, 123 (2), pp.142. 10.1007/s00339-016-0725-0 . hal-02904275

HAL Id: hal-02904275

<https://hal.science/hal-02904275>

Submitted on 24 Jul 2020

HAL is a multi-disciplinary open access archive for the deposit and dissemination of scientific research documents, whether they are published or not. The documents may come from teaching and research institutions in France or abroad, or from public or private research centers.

L'archive ouverte pluridisciplinaire **HAL**, est destinée au dépôt et à la diffusion de documents scientifiques de niveau recherche, publiés ou non, émanant des établissements d'enseignement et de recherche français ou étrangers, des laboratoires publics ou privés.

Dual phylogenetic staining protocol for simultaneous analysis of yeast and bacteria in artworks

Marina González-Pérez¹ · Catarina Brinco¹ · Ricardo Vieira¹ · Tânia Rosado¹ · Guilhem Mauran^{1,2,3} · António Pereira^{1,4} · António Candeias^{1,4} · Ana Teresa Caldeira^{1,4}

¹ HERCULES Laboratory, Évora University, Largo Marquês de Marialva 8, 7000-809 Évora, Portugal

² ARCHMAT Erasmus Mundus Master in Archaeological Materials Science, Évora University, Largo Marquês de Marialva 8, 7000-809 Évora, Portugal

³ Museum National d'Histoire Naturelle, Histoire Naturelle de l'Homme Préhistorique (HNHP), UMR 7194 CNRS-MNHN-UPVD, Sorbonne Université, Musée de l'Homme, 17 Place du Trocadéro, 75116 Paris, France

⁴ Chemistry Department, School of Sciences and Technology, Évora University, Rua Romão Ramalho 59, 7000-671 Évora, Portugal

Corresponding author: Ana Teresa Caldeira atc@uevora.pt

Electronic supplementary material The online version of this article (doi:[10.1007/s00339-016-0725-0](https://doi.org/10.1007/s00339-016-0725-0)) contains supplementary material, which is available to authorized users.

Abstract

The detection and analysis of metabolically active microorganisms are useful to determine those directly involved in the biodeterioration of cultural heritage (CH). Fluorescence in situ hybridization with oligonucleotide probes targeted at rRNA (RNA-FISH) has demonstrated to be a powerful tool for signaling them. However, more efforts are required for the technique to become a vital tool for the analysis of CH's microbiological communities. Simultaneous analysis of microorganisms belonging to different kingdoms, by RNA-FISH in-suspension approach, could represent an important progress: it could open the door for the future use of the technique to analyze the microbial communities by flow cytometry, which has shown to be a potent tool in environmental microbiology. Thus, in this work, various already implemented in-suspension RNA-FISH protocols for ex situ analysis of yeast and bacteria were investigated and adapted for allowing the simultaneous detection of these types of microorganisms. A deep investigation of the factors that can affect the results was carried out, focusing particular attention on the selection of the fluorochromes used for labelling the probe set. The resultant protocol, involving the use of EUK516–6-FAM/EUB338–Cy3 probes combination, was validated using artificial consortia and gave positive preliminary results when applied in samples from a real case study: the Paleolithic archaeological site of Escoural Cave (Alentejo, Portugal). This approach represents the first dual-staining RNA-FISH in-suspension protocol developed and applied for the simultaneous investigation of CH biodeteriogenic agents belonging to different kingdoms.

Keywords

Fluorescence in situ hybridization; RNA-FISH; Biodeterioration; Cultural heritage microbiology; Phylogenetic staining

1 Introduction

Biodeteriogenic microorganisms are one of the major threats to tangible cultural heritage (CH) preservation and conservation [1, 2]. For addressing this problem, it is crucial to have access to straightforward tools that allow to target them [1, 2]. Thus, it is of utmost importance to continuously develop and improve non-culture-based techniques that allow to detect and analyze the viable microorganisms thriving in CH assets [1–3].

RNA- fluorescence in situ hybridization (RNA-FISH) has been already applied to this end [1, 2]. Its application has not only provided a snapshot of the identity, presence and abundance of the microorganisms involved in the biodeterioration of CH objects [4–12], but has also led to the discovery of novel microorganisms thriving on them [13]. However, in spite of the already-demonstrated analytical potential [11, 14] and versatility of RNA-FISH technique for unveiling potential biodeteriogens of CH [7–10, 15–22], it continues to be scarcely applied in this field.

This technique relies on turning the target cells into fluorescent cells, while maintaining their integrity [23]. This is achieved through hybridization of fluorescently labelled oligonucleotide probes (RNA-FISH probes) to the target complementary RNA sequence within the cells [23].

The RNA-FISH protocols already applied for investigating biodeterioration of CH have been performed in situ (directly in the material) [10, 16, 17] or ex situ (in coated-slides or tape-strip) [7–9, 16–22] for investigating biodeterioration of a wide variety of materials (stone, rock, glass, mats, metals, mortars, polymers, wood, among others) [7–10, 15–22], employing almost exclusively paraform-aldehyde as fixative and analyzing the cells by epifluorescence microscopy or confocal laser scanning microscopy (CLSM).

The introduction of: (1) novel FISH probes for detecting specific microorganisms thriving in CH [14, 19]; (2) multi-probe sets for enhancing the signal [11]; and (3) the tape-strip sampling method [24], are some examples of the improvements already included in the RNA-FISH protocols applied for assessing the microbial colonizers of CH objects/assets. Their implementation has allowed to overcome some of the limitations of the technique (e.g. autofluorescence interference from microorganisms or from inorganic surrounding material and low intense probe-conferred signals due to low cell permeability or low ribosome content [2, 23]). However, there is still much to be done.

Thus, our work is focused on developing new strategies for facing the experimental difficulties found in the application of RNA-FISH in CH microbiology and for exploiting its analytical potential in this field [25–27]. The single-staining in-suspension protocols previously developed by us for the ex situ analysis of bacteria and fungi isolates from CH materials allow to: (1) avoid the use of paraform-aldehyde (associated to fixation-induced fluorescence [28]);

(2) reduce/eliminate background autofluorescence; and (3) obtain intense FISH signals using universal Cy3-labelled probes both by microscopy or flow cytometry analysis [26, 27].

There is a need for cheaper and faster in-suspension dual phylogenetic staining approaches. They allow to analyze simultaneously two target microorganisms, reducing by half the number of assays required to assess the composition of microbial communities while opening the door for their analysis by flow cytometry. This powerful automatic and accurate tool is already being extensively exploited for analyzing the microbial communities in environmental samples [29].

Thus, the aim of this work was to develop a dual-staining in-suspension RNA-FISH protocol for simultaneous ex situ detection of Eukarya and Eubacteria thriving in CH. Its application in CH microbiology will allow to reduce the amount of sample and the number of analyses required for microscopic detection while making the implementation of Flow-FISH in CH microbiology one step closer.

2 Materials and methods

2.1 Samples

2.1.1 Microorganisms

Two model microorganisms were selected for pure culture and artificial consortium experiments: the model bacterium *Escherichia coli* ATCC 25922 belonging to the American Type Culture Collection (Manassas, VA, USA) and the model yeast *Saccharomyces cerevisiae* CCMI 396 from the Culture Collection of Industrial Microorganisms (Lisbon). The cells were maintained at 4 °C in NA and YPD-Agar slants, respectively. The Erlenmeyer flasks (250 mL) containing 100 mL of NB and YEPD were inoculated and incubated at 30 °C under continuous shaking at 120 rpm. The cells were harvested from cultures in the latency, exponential or stationary growth phases (1, 5 or 24 h after inoculation). Aliquots of the culture (20.0 mL) were collected in 50 mL screw-cap centrifuge tubes and washed with phosphate-buffered Saline (PBS, 130.0 mM NaCl, 8.0 mM NaH₂PO₄, 2.7 mM KCl, 1.5mM KH₂PO₄, pH 7.2).

2.1.2 Real samples

Various microsamples were taken from the Escoural Cave (Montemor-o-Novo, Alentejo, Portugal) that is the only cavity discovered in Portugal where Upper Paleolithic rock art has been identified. They were collected, ensuring the representativeness, from areas of the walls' surface with visible microbial proliferation by scratching them with a scalpel. They were stored in sterile Petri dishes at 4 °C for their transport till their analysis (within 24 h).

Two microsamples, GdE 1 and GdE 2, were analyzed by RNA-FISH. The samples were transferred to 50-mL screw-cap centrifuge tubes, 2.0 mL of Maximum Recovery Diluent (MRD, Sigma-Aldrich,) was added and maintained overnight at 30.0 °C with continuous shaking (140 rpm). The resultant cellular suspensions were processed as described in Sects. 2.2.4, 2.3 and 2.4.

2.2 RNA-FISH analysis

2.2.1 RNA-FISH probes

The following probes labelled with Cy3, Cy5 or 6-FAM dyes at the 5' end were used: (1) EUB338 (5'-GCTGCC TCCCGTAGGAGT-3') for analyzing *E. coli*, in isolates and synthetic consortium experiments, and most bacteria in

microbial suspensions from Cultural Heritage samples [30]; and (2) EUK516 (5'-ACCAGACTTGCCCTCC-3') targeting the 18S rRNA of *S. cerevisiae* in the artificially prepared samples, and of most Eukarya in real samples from Cultural Heritage goods [30].

More information about the applied probes can be found at probeBase [31].

2.2.2 RNA-FISH analysis of yeast and bacterial isolates

The starting point for optimizing the FISH procedure conditions was a modification of the methods previously developed by us [25, 27]. These starting methods involved four sequential steps: fixation, hybridization, washing and analysis.

Fixation of the cells (Sect. 2.1.1) was carried out with 5.0 mL of absolute ethanol for 1 h at room temperature [32]. The fixed cells were washed with PBS and pre-served in 50% EtOH/PBS (v/v) at $-20.0\text{ }^{\circ}\text{C}$, in centrifuge microtubes.

For hybridization, 5×10^5 yeast and 5×10^7 bacterial fixed cells were used for each assay. The fixed cells were washed with PBS and the volume of the resultant cellular suspension containing the cells was transferred to 1.5 mL microtubes and centrifuged. The hybridization buffer (20 μL of aqueous solution, 0.9 M NaCl, 20 mM TrisHCl, 0.1% SDS, pH 7.2), was added to the pellet. The volume (0.1–2.0 μL) of the correspondent RNA-FISH probe stock solution (120 ng/ μL) was then added to each FISH sample. The probes used were EUB338 (for bacteria) and EUK516 (for yeast) labelled with Cy3, 6-FAM or Cy5 (Sect. 2.2.1). Both the blanks and FISH samples were incubated in a water-bath for 2 h at $46\text{ }^{\circ}\text{C}$ under continuous shaking. After centrifugation, the cells were washed with 25.0 μL of pre-warmed hybridization buffer for 30 min in a water-bath maintaining the same conditions used for hybridization.

Finally, cells were pelleted by centrifugation, resuspended in 200.0 μL of PBS and analyzed by epifluorescence microscopy and by flow cytometry.

The correspondent blanks, acting as controls for autofluorescence of the microbial cells, were subjected to standard FISH conditions without addition of the RNA-FISH probe. All the centrifugations cited in the experimental section were carried out for 5 min at 4500 rpm and $4\text{ }^{\circ}\text{C}$ for *S. cerevisiae* cells, and for 15 min at 13,000 rpm for *E. coli*.

All the process was carried out under aseptic conditions and all the assays were performed in triplicate.

2.2.3 RNA-FISH analysis of yeast–bacterial artificial consortia

For analyzing the mixed suspensions of *E. coli* and *S. cerevisiae* cells by RNA-FISH, yeast and bacterial isolates were fixed separately. Artificial consortia were prepared by mixing 5×10^7 and 5×10^5 fixed cells of *E. coli* and *S. cerevisiae*, respectively. The other steps for FISH analysis were performed as described in the Sect. 2.2.2 using the following centrifugation conditions: 13,000 rpm for 15 min at $4\text{ }^{\circ}\text{C}$. Various experiments were carried out using the individual probes EUB338 or EUK516 labelled with Cy3 or 6-FAM and two different probe sets: EUB338–Cy3/ EUK516–6-FAM and EUB338–6-FAM/EUK516–Cy3. They were prepared by mixing 1.0 μL of the EUB338 and 0.25 μL of the EUK516 fluorescently labelled probes.

2.2.4 RNA-FISH analysis of real samples

For each sample, the microbial suspension (0.8 mL) containing the recovered cells was centrifuged (15 min 13,000 rpm). The supernatant was discarded and the cell pellet was fixed with absolute ethanol for 1 h (0.8 mL). Thus, for hybridization, 0.4 mL of the cellular suspension was transferred to 1.5-mL microtubes (one for the FISH sample and other for the correspondent blank) and centrifuged. The subsequent steps were carried out as described for the artificial consortia (in Sect. 2.2.3) but using, exclusively, the EUB338-Cy3/EUK516-6-FAM set of probes.

2.2.5 Epifluorescence microscopy

Fluorescence images were taken with a Moticam PRO 282B camera mounted on a BA410E Motic microscope coupled to a 100-W Quartz Halogen Koehler illumination with intensity control and to an epi-attachment (EF-UPR-III) and a power supply unit (MOTIC MXH-100). It was equipped with the Motic filter sets Cy3, [excitation (ex) D540/25x, dichroic mirror (dm) 565DCLP, and emission (em) D605/55m], FITC (ex D480/30x, dm 505DCLP, em D535/40m) and Cy5 (ex D436/20x, dm 455DCLP, em D480/40m). Images were recorded and analyzed with the Motic Images Plus 2.0^{LM}.

2.2.6 Flow cytometry

Muse[®] Cell Analyzer and MuseSoft 1.4.0.0 software were used for flow cytometry analysis. Cells from the isolates, labelled with 6-FAM or Cy3, were analyzed for investigating the influence of the [probe]/[cell] ratios and cellular growth stage on the intensity of the probe-labelled cells. The Muse[®] Cell Analyzer is equipped with a 532-nm green laser. Each sample was run in triplicate. For FISH samples, 1000 events were acquired for each replicate, and for the blanks, the maximal number acquired during the limited time for each run were analyzed (>100). For each sample, the fluorescence

intensity was analyzed using the yellow photodiode detector (576/28). It was recorded on a gate that was first defined in a fluorescence intensity (FI)-versus-forward scatter density plot (considering blanks, FISH samples and non-treated samples).

2.3 Autofluorescence tests

The autofluorescence of the isolates, artificial consortia as well as microbial suspensions from real samples was tested by microscopic inspection of the cellular suspensions by epifluorescence microscopy using the Cy3, FITC and Cy5 filter sets before the analysis by RNA-FISH. No FISH signals were observed.

The autofluorescence of the fixed samples was also checked to avoid false positives, and they also did not show any detectable fluorescence.

2.4 Complementary analysis of real samples for assessing the microbiota

The analysis of the microsamples from the Escoural Cave by RNA-FISH was complemented with scanning electron microscopy (SEM). They were done directly as collected or coated with Au-Pd (Quorum Q150R ES) during 300 s, at 25 mA, and observed in a HITACHI S-3700N variable pressure scanning electron microscope (VP-SEM) with accelerating voltage of 9–10 kV. For determining the reliability of the RNA-FISH protocol to assess the microbiota inhabiting CH materials, results were also compared with further analyses involving culture-dependent and culture-independent approaches which were developed in another publication [33].

3 Results and discussion

It is well known that for improving or adapting RNA-FISH technique, new conditions need to be carefully investigated and selected to avoid the occurrence of false positives or negatives [11, 34, 35].

In CH microbiology applications, selecting the conditions for maximizing the fluorescence intensities obtained by RNA-FISH, such as the [probe]/[cell] ratio or the fluorophores labelling the probes [34], is crucial. Many factors can hamper the detection of the probe-conferred fluorescence (e.g. background fluorescence due to the presence of autofluorescent microorganisms or, particularly, of the CH material) [11, 13, 14, 36]. However, the fluorochromes' selection is only based on avoiding the interference with autofluorescent material, from the support or from other microorganisms [6, 14]. No extra criteria have been reported in the literature justifying it, even though the choice of proper fluorochromes is a key point for the success of the application of RNA-FISH [34].

It is also well known that on monument surfaces, most of the microorganisms can be in a dormant state containing a low number of rRNA copies and that the RNA-FISH signals are strongly dependent on the cellular RNA content [29, 35].

In this way, the effects of various factors influencing the RNA-FISH results (fluorochromes' selection and [probe]/[cell] ratio, growth stage of the cells) were first investigated in pure-culture experiments to establish the optimal conditions for detecting each type of microorganism.

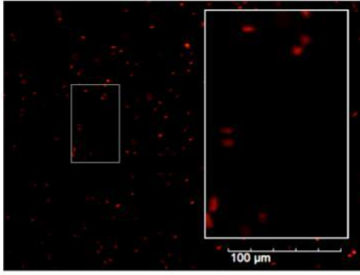
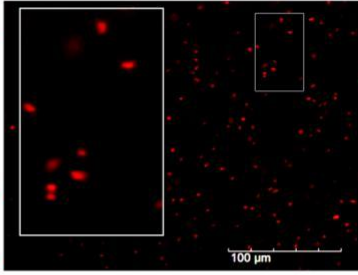
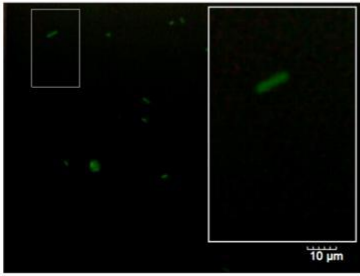
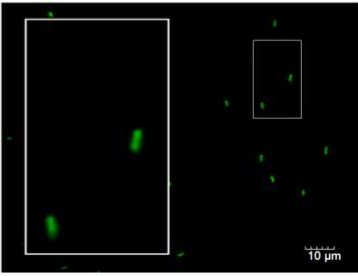
3.1 Factors influencing the results: pure-culture experiments

With this aim, several experiments were carried out: (1) maintaining constant the concentration of fixed cells that were hybridized and varying the concentrations of the probes; (2) using the probes EUB338 and EUK516 targeted with various fluorophores: Cy3, Cy5 or 6-FAM; and (3) analyzing cells in various growth stages, with different RNA contents.

Independently of the [probe]/[cell] ratio, intense FISH signals were obtained for both microorganisms when the specific probes labelled with Cy3 or 6-FAM were used (in Online Resource 1, Tables S1, S2). The microphotographs captured for the minimal and maximal [probe]/[cell] ratios are summarized in Tables 1 and 2. The signals were more intense for Cy3 than for 6-FAM, but both fluorochromes allowed the detection of bacteria and yeast cells. However, the EUB338–Cy5 probe did not allow to detect the bacterial cells at any of the concentrations tested and the EUK516–Cy5 only allowed to visualize yeast cells with extremely low intensity (too low compared to those obtained when using the other two fluorophores). Rapid photobleaching of Cy5 was also observed during microscopic inspection (in few seconds of light exposure, the fluorescent signals disappeared). These results are in accordance with the lack of signal that has been previously referred by other authors when applying Cy5 for targeting microorganisms using RNA-FISH probes (ARCH915-Cy5 or EUB338-Cy5) in CH studies [6, 11]. However, in contrast with the hypothesis raised in those works to explain it (low RNA content or low probe permeability), the results obtained in this work pointed out to the low fluorescence intensity associated to the fluorochrome and to its rapid photobleaching as possible reasons for the absence of fluorescent signals. Conversely, good RNA-FISH signals have been previously obtained by other authors using the same probe EUB338-Cy5 and paraformaldehyde as fixative for detecting bacteria in enriched samples from CH [36]. This

evidence that, the results strongly depend on the protocol used, again highlights the importance of investigating the factors that can affect the signals obtained for each proto-col, to avoid misleading conclusions.

Table 1 RNA-FISH microphotographs of *E. coli* cells in exponential phase stained with EUB338–Cy3, EUB338–Cy5 and EUB338–6-FAM probes for the minimal and maximal [probe]/[cell] ratio tested

Fluorochrome / Filter set	[Probe]/[Cell] (ng/cell)	
	0.48	9.60
Cy3/Cy3		
Cy5/Cy5	Undetectable	Undetectable
6-FAM/FITC		

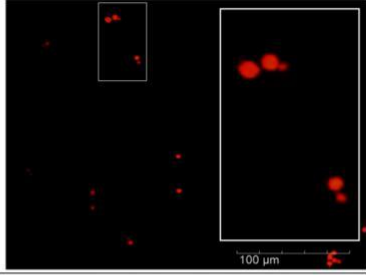
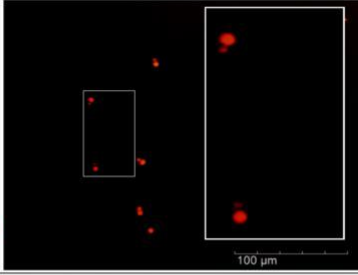
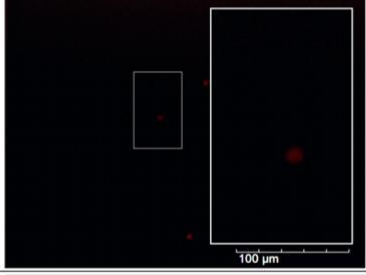
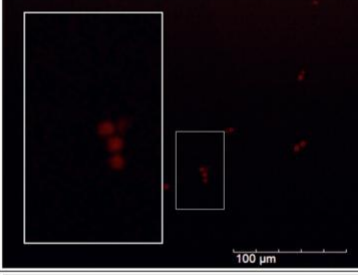
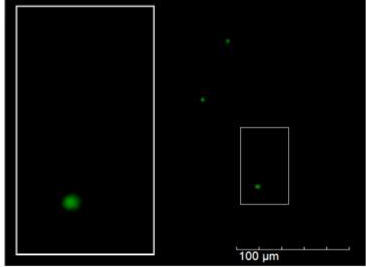
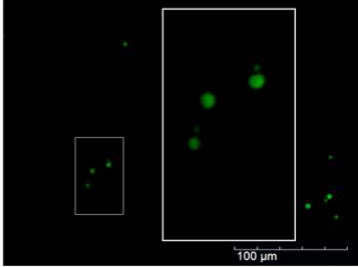
The behavior described above was found for all the growth stages investigated (Table 3): Cy3 and 6-FAM labelled probes allowed to detect the yeast and bacterial cells, whereas Cy5-target probes yield none or extremely weak fluorescent signals.

Thus, the probes labelled with Cy5 were not considered in the next experiments and they were also excluded from consideration for this in-suspension RNA-FISH method.

The cells labelled with Cy3 and 6-FAM were also analyzed by flow cytometry. In accordance with the microscopic observations, the cells of both microorganisms were satisfactorily detected, independently of the growth phase and the [probe]/[cell] ratio (Online Resource 1, Table S3). Considering this, the RNA-FISH method used is mainly limited by the analytical capacity of the flow cytometry and microscopic techniques. Attending to the conditions used for RNA-FISH, the minimal number of cells required for their detection in a sample is around 500 cells.

On the basis of the results obtained in the single-staining assays, the best probe combination to be used for simultaneous analysis of yeast and bacteria cells seems to be EUB338–Cy3/EUK516–6-FAM. On the one hand, the microscopic analysis revealed that: (1) for the bacteria cells (smaller and more difficult to detect than yeast), the EUB338–Cy3 produced the most intense fluorescent signals from those tested (Table 1); and (2) intense fluorescent yeast cells were observed using EUK516–6-FAM for targeting them (Table 2). Also, the flow cytometry analysis of *S. cerevisiae* and *E. coli* isolates stained with EUK516–6-FAM and EUB338–Cy3, respectively, suggested the possibility of distinguishing the stained cells of both microorganisms (Fig. 1). These preliminary results pointed out the possibility of using this in-suspension RNA-FISH protocol in the future for its application in combination with flow cytometry (Flow–FISH) for analyzing microbial communities composed of this kind of microorganisms.

Table 2 RNA-FISH microphotographs of *S. cerevisiae* cells in stationary phase stained with EUK516–Cy3, EUK516–Cy5 and EUK516–6-FAM probes for the minimal and maximal [probe]/[cell] ratio tested

Fluorochrome / Filter set	[Probe]/[Cell] (ng/cell)	
	0.48	9.60
Cy3/Cy3		
Cy5/Cy5		
6-FAM/FITC		

To the best of our knowledge, this combination of probes has not been applied before using this RNA-FISH dual staining protocol. In fact, whereas Cy3 and Cy5 have been previously used for targeting microbial colonizers of CH goods, 6-FAM has not been previously employed in this field. Instead, FITC, a fluorochrome with similar spectral properties but more susceptible to photobleaching, has been usually employed [5, 10, 19, 37].

3.2 Simultaneous analysis of yeast and bacterial cells in mixed suspensions: dual staining

On the basis of the results obtained in the pure-culture assays, for the simultaneous analysis of yeast and bacteria, only the combinations of EUK516 and EUB338 labelled with Cy3 or 6-FAM were tested for analyzing yeast and bacteria simultaneously.

To confirm that the probes mix EUK516–6-FAM/ EUB338–Cy3 is a better alternative than the use of EUK516–Cy3/EUB338–6-FAM, the following experiments were carried out using artificial consortia:

- 1.\ both probe mixes were tested in independent assays EUK516–6-FAM/EUB338–Cy3 and EUK516–Cy3/ EUB338–6-FAM and analyzed with the filter sets specific for each fluorochrome: FITC and Cy3 filter sets;
- 2.\ all the probes cited above were also applied in individual FISH assays and analyzed with both filter sets to ensure that the FISH protocol applied allows specific detection of the target cells and avoid false positives. It means that the RNA-FISH method does not exhibit cross-fluorescence interference;
- 3.\ the corresponding blanks for all the FISH assays mentioned were also prepared and analyzed showing no detectable fluorescence (data not shown).

The results confirmed that the use of EUK516–6-FAM/ EUB338–Cy3 combination (Table 4) is the best alternative for simultaneous detection of yeast and bacteria from those tested [interferences were not detected when bacterial and yeast cells were visualized using the Cy3 and FITC filter sets, respectively (Fig.2)]. The probe-conferred fluorescence of the Cy3-targeted bacterial cells is intense and the non-specific fluorescence detected in the Cy3 filter for the 6-FAM-targeted yeast cells contributed exclusively to the background fluorescence. This is in agreement with the results of the individual probe assays, that showed no signals for the bacteria targeted with EUB338–Cy3 using the FITC filter but weak signals

for the yeast targeted with EUK516–6-FAM using the Cy3 filter (Table 4). This is due to the spectral properties of Cy3 and 6-FAM dyes; Cy3 does not emit light under the FITC filter although 6-FAM emits light under the Cy3 filter, albeit of low intensity.

Table 3 Influence of the cellular growth phase and of the fluorochrome labelling the probe on the FISH results FISH microphotographs from the analysis of *E. coli* and *S. cerevisiae* cells in latency, exponential and stationary growth stages using the EUB338 and the EUK516 oligonucleotides labelled with -Cy3, -Cy5 or-6-FAM at the 5' end.

		Growth stage		
Fluorophore/ Filter set		Latency	Exponential	Stationary
<i>S. cerevisiae</i>	Cy3/Cy3			
	Cy5/Cy5	Undetectable	Undetectable	
	6-FAM/FITC			
<i>E. coli</i>	Cy3/Cy3			
	Cy5/Cy5	Undetectable	Undetectable	
	6-FAM/FITC			

The microphotographs obtained for the EUK516–Cy3/ EUB338–6-FAM mix revealed that this combination of probes does not allow the detection of both microorganisms. Intense fluorescent yeast cells were captured (Table 4). However, weak fluorescent bacteria cells were detected; the fluorescence was as low as it was impossible to capture them. These results were corroborated by the analysis of the artificial consortium with the individual probes (Table 4).

Thus, an in-suspension RNA-FISH protocol for detecting yeast and bacteria simultaneously has been developed. It involves the use of the EUB338–Cy3/EUK516-6-FAM probes. It was validated using artificial *E. coli*–*S. cerevisiae* consortium (Fig. 2).

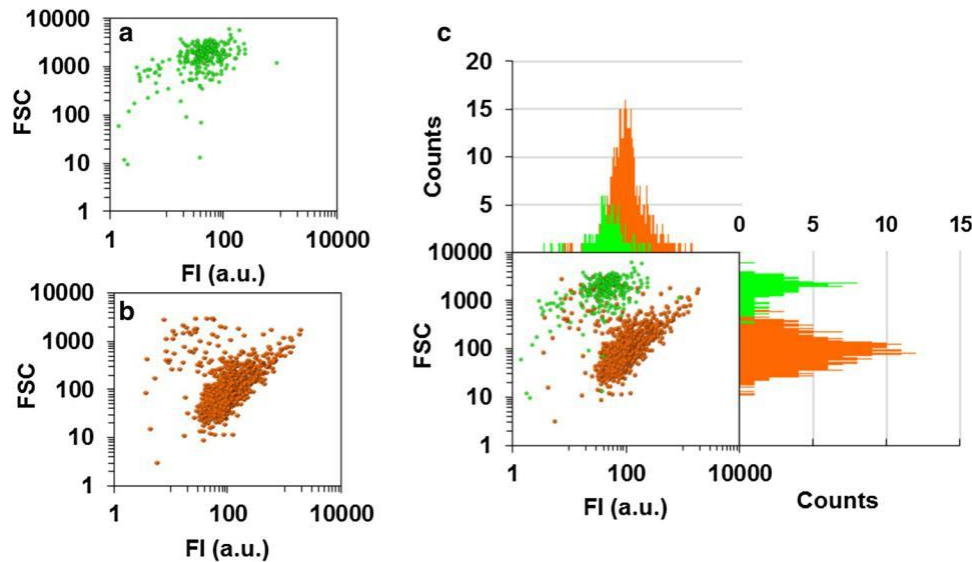


Fig. 1 Flow cytometry results. Fluorescence intensity (FI)/forward scattering (FSC) density plots, for the RNA-FISH single-staining assays using isolates of *E. coli* (a) and *S. cerevisiae* (b) cells in exponential phase using EUB338–Cy3 (orange) and EUK516–6-FAM (green) probes, respectively. Comparison of the flow cytometry results (c): merged fluorescence intensity (FI)/forward scattering (FSC) density plots, one-parameter histograms of the FI and FSC.

To our knowledge, this is the first work focused on the development and application of RNA-FISH in-suspension for simultaneous analysis of microorganisms from different kingdoms, Eukarya and Eubacteria, in CH samples.

3.3 Application of the RNA-FISH method for simultaneous analysis of yeast and bacteria in real samples

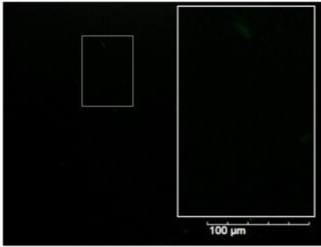
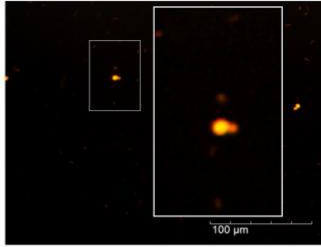
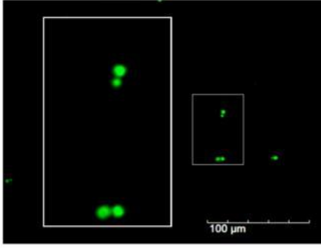
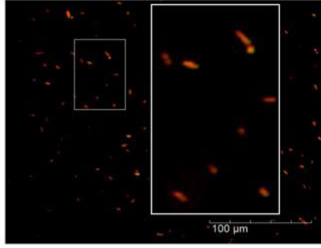
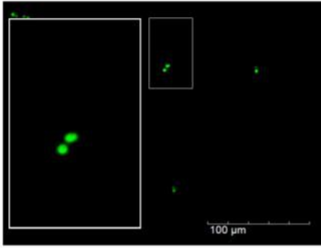
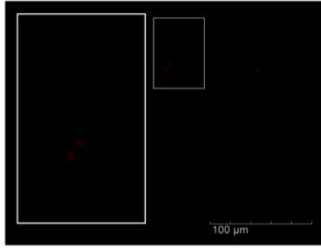
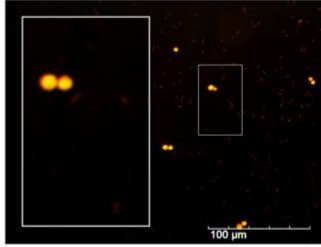
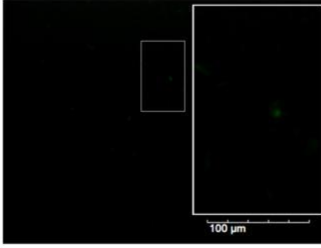
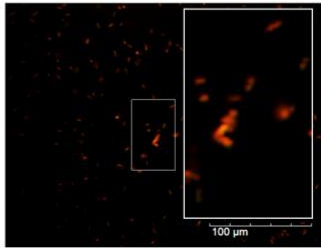
The in-suspension RNA-FISH method previously validated using artificial consortia was used for simultaneous assessment of the presence of yeast and bacteria in real samples of the Paleolithic site of the cave of Escoural (Alentejo region, Portugal). It is the only cavity discovered in Portugal where Upper Paleolithic rock art (35,000–10,000 BP) has been identified [38]. It hosts numerous paintings and engravings, most of which are altered due to weathering and environmental conditions. Microsamples from bio-logical breaches spotted inside the cave (Fig. 3a, b) were collected to study the metabolically active microorganisms proliferating inside the cave. The analysis by scanning electron microscopy (SEM) of GdE 1 and GdE 2 microsamples confirmed the presence of biofilms covering a significant area of the microfragments as well as of microbial contaminants (Fig. 3c, d). Among others, cells with reduced dimension were detected, which can be indicative of the presence of bacterial cells (Fig. 3c).

The microbial cells extracted from the two microfragments from the Escoural Cave, GdE1 and GdE2, were analyzed by the RNA-FISH method as described in the methodology. No autofluorescence signals were observed for the blanks. This notably facilitated the analysis of the results obtained by RNA-FISH. By applying the EUB338–Cy3/ EUK516–6-FAM mix, only intense orange signals were obtained by microscopic inspection. This suggested the presence of active Eubacteria living in the Escoural Cave and the absence of yeast (Fig. 3e, f). These preliminary results were supported by those obtained in a complete study about the biodeteriogenic activity of microbial bio-films' communities of Escoural Cave, also carried out in our research group [33]. The results obtained in this work, by both culture-dependent and NGS approaches, enabled to confirm that the Escoural Cave was: (1) predominantly colonized by prokaryote cells, representing around 90% of the microbial community, that are also active microorganisms; (2) not colonized by a detectable quantity of yeast [33]. Thus, it can be concluded that satisfactory preliminary results were obtained by applying the improved dual-staining RNA-FISH protocol. This suggests its applicability for analyzing CH microcolonizers, whereas more efforts are required to validate the protocol for its use in real samples, particularly for stabilizing the optimal storage conditions.

4 Conclusions

The results of this work allowed to highlight the importance of a careful selection of the conditions used for avoiding the occurrence of false positives or negatives when applying RNA-FISH. They also evidenced that particular attention must be focused on the selection of the appropriate fluorochromes for labelling the probes when the protocols are being adapted or modified.

Table 4 FISH microphotographs from the analysis of artificial consortia of *E. coli* and *S. cerevisiae* using the EUB338 and EUK516 probes labelled with Cy3 or 6-FAM in assays performed with single probes for single staining or probe sets for dual staining

Probea	Filters	FITC	TRITC
EUB338-6-FAM EUK516-Cy3			
EUK516-6-FAM EUB338-Cy3			
EUK516-6-FAM			
EUK516-Cy3		Undetectable	
EUB338-6-FAM			Undetectable
EUB338-Cy3		Undetectable	

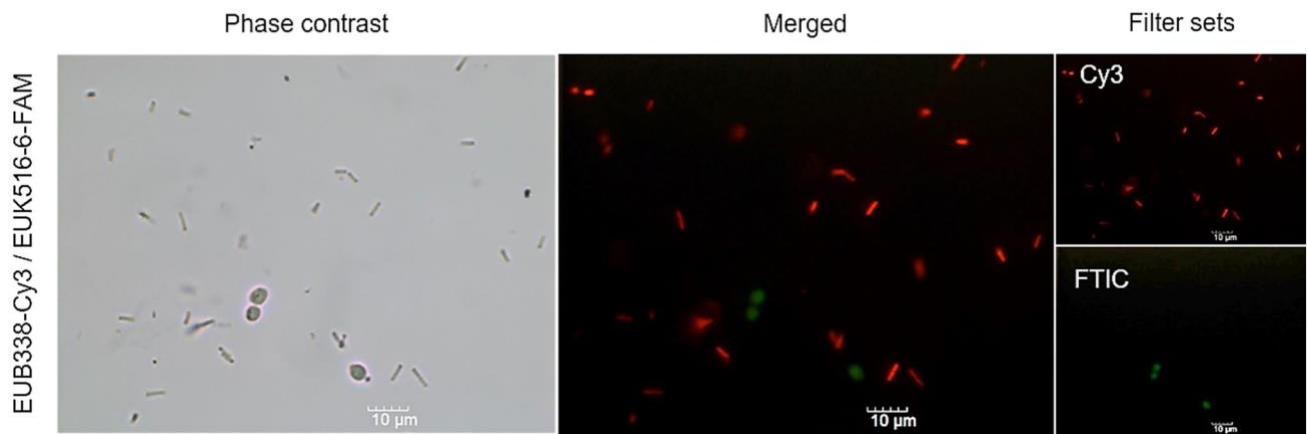


Fig. 2 Epifluorescence micrographs of artificial consortium of *S. cerevisiae* and *E. coli* cells obtained using the optimized in-suspension RNA-FISH protocols with the EUK516–6-FAM/EUB338–Cy3 mix. Phase contrast and merged fluorescence in situ hybridization (FISH) image of the signals of *E. coli* using the Cy3 filter (orange) and *S. cerevisiae* (green) using the FITC filter.

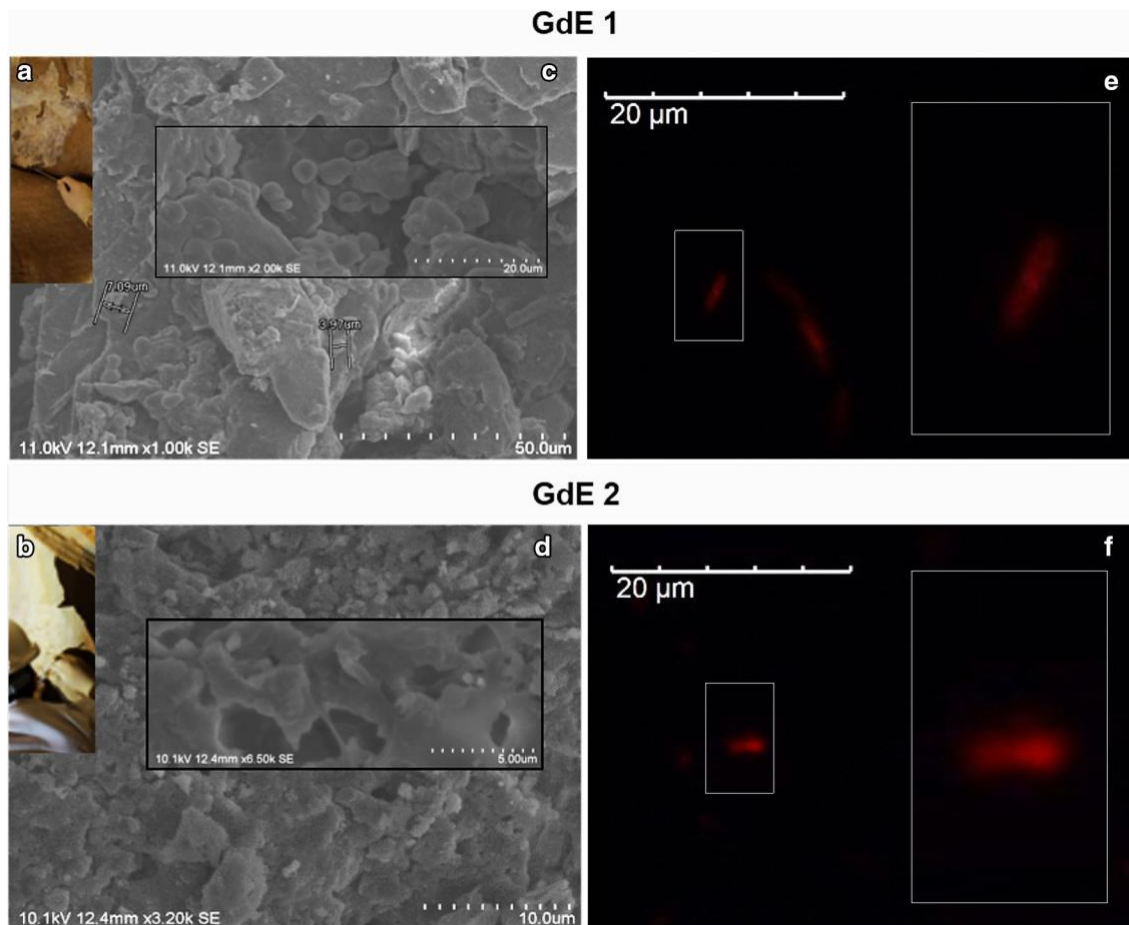


Fig. 3 Analysis of rock microfragments GdE 1 and GdE from Escoural Cave (a, b), by: (1) SEM micrographs (c, d) and (2) the dual-staining RNA-FISH protocol developed in this work, using the EUB338–Cy3/EUK516–6-FAM mix- (e, f).

Microscopic analysis of the bacterial and yeast isolates with the in-suspension RNA-FISH protocol revealed the impossibility to use Cy5 for labelling EUB338 or EUK516 in the attempt of cell detection.

Flow-cytometry analysis of the single-stained isolates, points out the possibility of applying the in-suspension RNA-FISH protocol for analyzing yeast and bacteria stained with EUB338–Cy3 and EUK516–6-FAM.

The main output of this work was a dual-staining in-suspension RNA-FISH protocol that allows simultaneous detection of yeast and bacteria using EUB338–Cy3/ EUK516–6-FAM probe set. The EUB338–Cy3/EUK516–6-FAM gave notably

better results than the EUB338–6-FAM/ EUK516–Cy3 combination. The protocol was validated for simultaneous analysis of yeast and bacterial cells using artificial consortia and has also shown good preliminary results in the analysis of CH samples. Whereas more work is required to evaluate the potentials and limitations of the dual staining in-suspension RNA-FISH method for analyzing real samples, the results obtained are promising and open the door for the future implementation of Flow–FISH technique for investigating the biodiversity hosted on CH assets. This encourages us to continue working with the RNA-FISH in-suspension protocol and Flow–FISH technique so that they become practical tools for investigating the biodeterioration of artworks.

Acknowledgements This work was co-financed by European Union-European Regional Development Fund ALENTEJO 2020 through the project “HIT3CH-HERCULES Interface for Technology Transfer and Teaming in Cultural Heritage” (ALT20-03-0246-FEDER-000004) and by FCT-Fundação para a Ciência e a Tecnologia through the project “MICROTECH-ART-Microorganisms Thriving on and Endamaging Cultural Heritage—an Analytical Rapid Tool” (PTDC/BBB-IMG/0046/2014). M. González-Pérez acknowledges FCT for the economic support through the post-doctoral grant SFRH/ BPD/100754/2014. Authors are also grateful to the Alentejo Regional Directorate for Culture and archaeologist António Carlos Silva for allowing the sampling from Escoural Cave.

References

1. P. Sanmartín, A. DeAraujo, A. Vasanthakumar, *Microb. Ecol.* **1** (2016)
2. A. Mihajlovski, D. Seyer, H. Benamara, F. Bousta, P. Di Martino, *Ann. Microbiol.* **65**, 1243 (2015)
3. J. L. Boutaine, *Phys. Technol. Study Art Archaeol. Cult. Herit.* **1**, 1 (2006)
4. C. Schabereiter-Gurtner, G. Piñar, W. Lubitz, S. Rölleke, *J. Microbiol. Methods* **45**, 77 (2001)
5. C. Urzì and P. Albertano, in *Methods Enzymol.*, ed by J. D. Ron (Academic Press, London, 2001), pp. 340–355
6. G. Piñar and W. Lubitz, in http://www.Itam.Cas.Cz/~Arcchip/Ariadne_8.Shtml (2004), p. 12
7. S. Baskar, R. Baskar, L. Maucilaire, J.A. McKenzie, *Curr. Sci.* **90**, 58 (2006)
8. F. Cappitelli, P. Principi, C. Sorlini, *Trends Biotechnol.* **24**, 350 (2006)
9. F. Cappitelli, P. Principi, R. Pedrazzani, L. Toniolo, C. Sorlini, *Sci. Total Environ.* **385**, 172 (2007)
10. A. Santos, A. Cerrada, S. García, M. San Andrés, C. Abrusci, D. Marquina, *Microb. Ecol.* **58**, 692 (2009)
11. E. Müller, U. Drewello, R. Drewello, R. Weißmann, S. Wuertz, *J. Cult. Herit.* **2**, 31 (2001)
12. A. Polo, F. Cappitelli, L. Brusetti, P. Principi, F. Villa, L. Giaco-mucci, G. Ranalli, C. Sorlini, *Microb. Ecol.* **60**, 1 (2010)
13. D.B. Meisinger, J. Zimmermann, W. Ludwig, K.-H. Schleifer, G. Wanner, M. Schmid, P.C. Bennett, A.S. Engel, N.M. Lee, *Environ. Microbiol.* **9**, 1523 (2007)
14. K. Sterflinger, M. Hain, *Stud. Mycol.* **1999**, 23 (1999)
15. S. Muller, G. Nebe-von-Caron, *FEMS Microbiol. Rev.* **34**, 554 (2010)
16. C. Urzì, in *Herit. Microbiol. Sci. Microbes, Monum. Marit. Mater.*, ed by E. May, M. Jones, J. Mitchell (Royal Society of Chemistry (Great Britain), Cambridge, 2008), pp. 143–150
17. K. Sterflinger, W.E. Krumbein, A. Schvviertz, *Int. Microbiol.* **1**, 217 (1998)
18. C. Urzì, F. De Leo, P. Donato, V. La Cono, in *Art, Biology, and Conservation: Biodeterioration of Works*, ed by R. J. Koes-tler, M. M. Art (Metropolitan Museum of Art, NY, 2003), pp. 317–325
19. C. Urzì, V. La Cono, E. Stackebrandt, *Environ. Microbiol.* **6**, 678 (2004)
20. F. Villa, F. Cappitelli, P. Principi, A. Polo, C. Sorlini, *Lett. Appl. Microbiol.* **48**, 234 (2009)
21. V. La Cono, C. Urzì, *J. Microbiol. Methods* **55**, 65 (2003)
22. F. De Leo, C. Urzì, *Fungi Differ. Substr.* **144** (2015)
23. R.I. Amann, L. Krumholz, D.A. Stahl, *J. Bacteriol.* **172**, 762 (1990)
24. C. Urzì, F. De Leo, *J. Microbiol. Methods* **44**, 1 (2001)
25. R. Vieira, P. Nunes, S. Martins, M. González, T. Rosado, A. Pereira, A. Candeias, A. T. Caldeira, in *Science, Technology and Cultural Heritage*, ed by A. Rogerio-Candelera (Taylor & Francis Group, London, 2014), pp. 257–262
26. R. Vieira, M. González-Pérez, A. Pereira, A. Candeias, A. T. Caldeira, *Conserv. Património* **23**, 71 (2016)
27. M. González, R. Vieira, P. Nunes, T. Rosado, S. Martins, A. Candeias, A. Pereira, A.T. Caldeira, *E-Conserv J.* **44** (2014)
28. Y. Williams, S. Byrne, M. Baschir, A. Davies, A. Whelan, Y. Gun’ko, D. Kelleher, Y. Volkov, *J. Microsc.* **232**, 91 (2008)
29. E. Nettmann, A. Fröhling, K. Heeg, M. Klocke, O. Schlüter, J. Mumme, *BMC Microbiol.* **13**, 278 (2013)
30. R. Amann, B.M. Fuchs, *Nat. Rev. Microbiol.* **6**, 339 (2008)
31. D. Greuter, A. Loy, M. Horn, T. Rattei, *Nucleic Acids Res* **44**, D586 (2016)
32. R.I. Amann, W. Ludwig, K.H. Schleifer, *Microbiol. Rev.* **59**, 143 (1995)
33. G. Mauran, T. Rosado, C. Salvador, N. Schiavon, J. Mirão, A.T. Caldeira, A. Candeias, *Int. Biodeterior. Biodegrad.* (2016) (in press)
34. T. Bouvier, P.A. Del Giorgio, *FEMS Microbiol. Ecol.* **44**, 3 (2003)
35. G. Wallner, R. Amann, W. Beisker, *Cytometry* **14**, 136 (1993)
36. G. Piñar, C. Ramos, S. Rölleke, C. Schabereiter-Gurtner, D. Vybiral, W. Lubitz, E.B.M. Denner, *Appl. Environ. Microbiol.* **67**, 4891 (2001)
37. C. Urzì, V. La Cono, F. De Leo, P. Donato, *Molecular Biology and Cultural Heritage*. (Balkema Publ, Lisse, 2003), p. 55)
38. F. dos Santos, *O Arqueol. Port* **2**, 5 (1964)