



HAL
open science

Shaping caustics into propagation-invariant light

Alessandro Zannotti, Cornélia Denz, Miguel Alonso, Mark Dennis

► **To cite this version:**

Alessandro Zannotti, Cornélia Denz, Miguel Alonso, Mark Dennis. Shaping caustics into propagation-invariant light. *Nature Communications*, 2020, 11 (1), 10.1038/s41467-020-17439-3 . hal-02902860

HAL Id: hal-02902860

<https://hal.science/hal-02902860>

Submitted on 20 Jul 2020

HAL is a multi-disciplinary open access archive for the deposit and dissemination of scientific research documents, whether they are published or not. The documents may come from teaching and research institutions in France or abroad, or from public or private research centers.

L'archive ouverte pluridisciplinaire **HAL**, est destinée au dépôt et à la diffusion de documents scientifiques de niveau recherche, publiés ou non, émanant des établissements d'enseignement et de recherche français ou étrangers, des laboratoires publics ou privés.

Shaping caustics into propagation-invariant light

Alessandro Zannotti ¹✉, Cornelia Denz¹, Miguel A. Alonso ^{2,3} & Mark R. Dennis ^{4,5}

Structured light has revolutionized optical particle manipulation, nano-scaled material processing, and high-resolution imaging. In particular, propagation-invariant light fields such as Bessel, Airy, or Mathieu beams show high robustness and have a self-healing nature. To generalize such beneficial features, these light fields can be understood in terms of caustics. However, only simple caustics have found applications in material processing, optical trapping, or cell microscopy. Thus, these technologies would greatly benefit from methods to engineer arbitrary intensity shapes well beyond the standard families of caustics. We introduce a general approach to arbitrarily shape propagation-invariant beams by smart beam design based on caustics. We develop two complementary methods, and demonstrate various propagation-invariant beams experimentally, ranging from simple geometric shapes to complex image configurations such as words. Our approach generalizes caustic light from the currently known small subset to a complete set of tailored propagation-invariant caustics with intensities concentrated around any desired curve.

¹Institute of Applied Physics and Center for Nonlinear Science (CeNoS), University of Muenster, Muenster 48149, Germany. ²Aix Marseille University, CNRS, Centrale Marseille, Institut Fresnel, UMR 7249, Marseille 13013, France. ³The Institute of Optics, University of Rochester, Rochester, NY 14627, USA. ⁴School of Physics and Astronomy, University of Birmingham, Birmingham B15 2TT, UK. ⁵HH Wills Physics Laboratory, University of Bristol, Bristol BS8 1TL, UK. ✉email: a.zannotti@uni-muenster.de

The field of structured light has grown significantly since the early studies of Laguerre- and Hermite-Gaussian modes in laser cavities^{1,2}. This growth stemmed both from increased theoretical understanding and from the advent of new optical devices such as spatial light modulators (SLMs). This area of research has now transcended optics, leading to a range of applications in fundamental physics³, telecommunications^{4–6}, security^{7–9}, micromachining^{10,11}, imaging^{12–15}, and the manipulation of cells and microorganisms^{16,17}. In particular, the fact that phase-structured light carries orbital angular momentum (OAM)¹⁸ allows the exertion not only of forces but also of torques onto atoms, bacteria, or micromachines^{1,2}.

A class of structured optical field that has received considerable attention is that of the so-called propagation-invariant or non-diffracting beams, whose transverse intensity distribution remains essentially invariant over a significant propagation distance¹⁹. Propagation-invariant beams have a transverse angular spectrum confined to a ring²⁰ whose radius is proportional to their numerical aperture. The best-known examples are Bessel^{21,22}, Mathieu^{19,23,24}, and Weber^{19,23,25} beams, which are described by closed-form expressions that are separable in polar, elliptic and parabolic coordinates, respectively. The intensity maxima of these beams are therefore localized around the corresponding conic section shapes, characterized by their caustics^{24,26–28}. Some of these propagation-invariant beams have been used in advanced optical trapping setups^{16,17,29}, imaging with high resolution^{14,15}, and ultrafast nanoscale material processing with high aspect ratios^{10,11,30}. However, having only a limited set of beams of this type restricts significantly their usefulness. All the applications mentioned earlier would greatly benefit from the ability to tailor the shapes of propagation-invariant beams for the purpose at hand.

The achievement of our work is propagation-invariant beams with customizable intensity profiles. To design the respective beams, we develop two methods for shaping the corresponding caustics. These methods are illustrated with the experimental implementation of beams whose intensity features trace a range of geometrical shapes as well as more complex patterns such as words, which remain essentially invariant over a significant propagation distance.

Results

Caustics in propagation-invariant beams. The conceptual basis for this work is the relation between these wave solutions and the simpler ray model, for which the intensity maxima follow the shapes of the caustics, which are the envelopes of the two-parameter family of rays associated with the field³¹. Within the ray picture, propagation invariance requires that all rays travel at the same angle θ with respect to the propagation direction (chosen as the z axis), and that the two-parameter ray family is composed of one-parameter subfamilies of parallel rays constrained to planes parallel to z . This structure guarantees that the caustics themselves are invariant in z , since they correspond to the envelopes of these planes. The fact that all rays have equal angle with respect to the z axis implies that the transverse Fourier spectrum of the wave field is restricted to a ring¹⁹ (whose radius is $k_{\perp} = k \sin \theta$, where k is the wavenumber). The azimuthal angle ϕ of each subfamily of rays indicates the point along the ring to which they correspond.

The mathematical correspondence between the ring's amplitude and phase distributions, $A(\phi)$ and $\Phi(\phi)$, and the beam's transverse field is given by Whittaker's integral^{19,20}:

$$\psi(\mathbf{r}) = \oint A(\phi) \exp[i\Phi(\phi) + ik_{\perp} \mathbf{r} \cdot \mathbf{u}(\phi)] d\phi, \quad (1)$$

where $\mathbf{r} = (x, y)$ is the transverse position vector and $\mathbf{u}(\phi) = (\cos \phi, \sin \phi)$ is a unit vector that indicates the transverse direction of the corresponding rays and the planes that embed them. The connection with ray optics and caustics results from applying the method of stationary phase³¹ to Eq. (1). As shown in the 'Methods' section, this leads to the following relation in terms of the parametrized caustic shape $\mathbf{r}_c(\phi)$:

$$\mathbf{r}_c(\phi) = \frac{1}{k_{\perp}} [\Phi''(\phi) \mathbf{u}(\phi) - \Phi'(\phi) \mathbf{u}'(\phi)]. \quad (2)$$

By choosing A and Φ appropriately, different caustic shapes can be achieved. The beam's intensity maxima are localized within the vicinity of these caustics. For example, Bessel beams (for which A is constant and $\Phi(\phi) = \ell\phi$ for integer ℓ) have caustics with circular (or punctual, for $\ell = 0$) cross-sections^{28,32–34}, while Mathieu beams have caustics with elliptic or hyperbolic cross-sections²⁴.

Figure 1a–e illustrates some of these ideas for the simple example of a Bessel beam with topological charge $\ell = 1$. The transition between the Fourier plane in Fig. 1a and the physical space in Fig. 1b–e is implemented experimentally with a converging lens placed one focal length away from the Fourier plane. The cross-sections of the planes containing the rays shown in Fig. 1c form the circular caustic shown in Fig. 1b. The 3D configuration of some of these rays (one from each subfamily) is also shown in Fig. 1d; the complete two-parameter family of rays includes the subset shown as well as replicas displaced in z (see Supplementary Note 1 for a discussion of the whole ray family). Note that the rays are color coded (by hue) to show the corresponding phase at the ring. For visual convenience the accumulation of phase due to propagation is factored out. Finally, the 3D intensity distribution for this Bessel beam, dominated by the innermost intensity circle, is also shown in Fig. 1e. Figure 1f–j shows similar information for a more complicated beam with $\Phi(\phi) = -2.5 \sin(2\phi)$. This phase distribution leads to a propagation-invariant astroid caustic that exhibits four cusps (see 'Methods' section for an explanation of the origin of these cusps). More information regarding the visualization of the rays is provided in Supplementary Note 1.

Solving the inverse problem using the differential Eq. (2). Our goal, however, is to solve the inverse problem: find the phase distribution Φ that produces any desired propagation-invariant caustic. The first approach is the solution of Eq. (2) for $\Phi(\phi)$ for a given $\mathbf{r}_c(\phi)$. For simplicity we keep the amplitude $A(\phi)$ constant. The details of this approach are given in the 'Methods' section, and some results are shown in Fig. 2 for simple caustic configurations. For example, solving the differential equation for the astroid caustic shown in Fig. 2a gives the sinusoidal phase function $\Phi(\phi) = \ell\phi - q/2 \sin(2\phi)$ shown in Fig. 2b, with $q \in \mathbb{R}$, which is mapped mod 2π on the Fourier ring shown in Fig. 2c. (Note that this astroid can carry OAM with topological charge ℓ .) From the Fourier phase function, we calculate the transverse ray picture of the beam shown in Fig. 2d. The resulting experimentally measured transverse intensity and phase distributions, shown in Fig. 2e, f, respectively (for $q = 5$), present a square lattice at the center, surrounded by several rings. This beam interpolates between Bessel beams ($q = 0$) and four interfering plane waves ($q \rightarrow \infty$): we call this light field a Bessel-lattice beam $\psi_{\ell,q}^{\text{BL}}$. Figure 2g–l, m–r shows the corresponding results for deltoid and cardioid caustics, respectively. We use a cw laser beam with wavelength $\lambda_0 = 2\pi/k_0 = 532$ nm, shaped by a SLM, for their experimental realization. All beams demonstrated here have the same real space structure size $a = 2\pi/k_{\perp} = 15$ μm related to the propagation constant k_z via $k_0^2 = k_{\perp}^2 + k_z^2$. Figure 2s presents

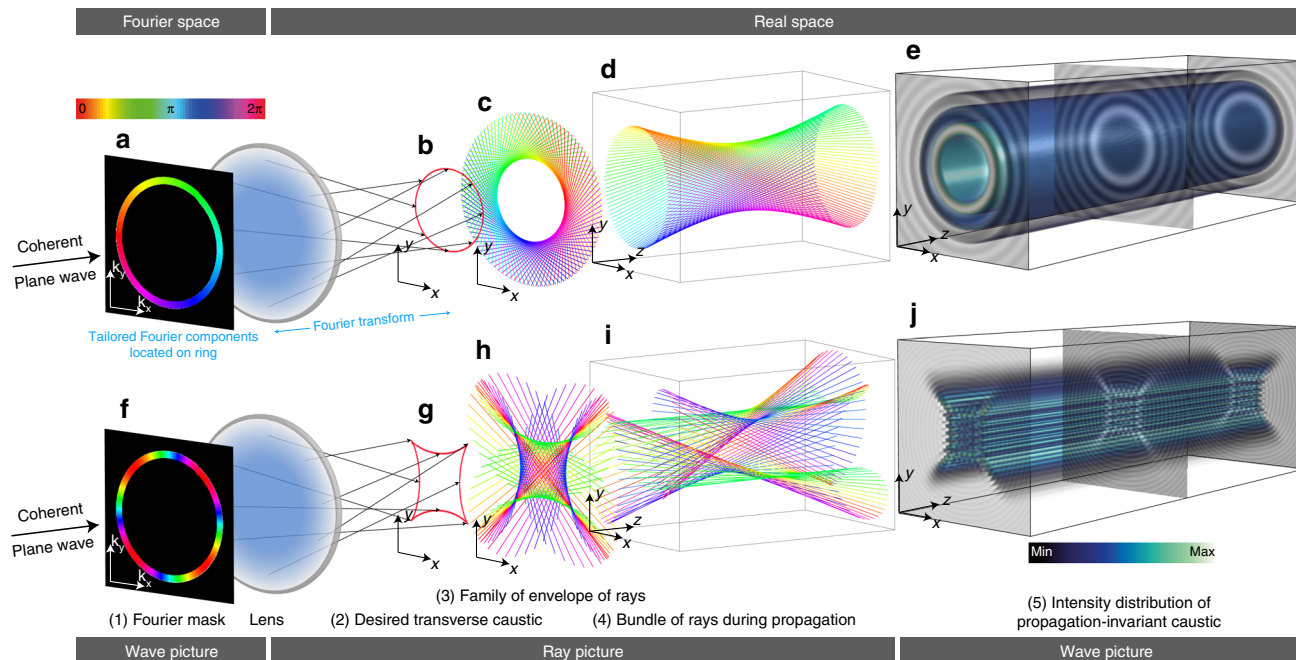


Fig. 1 Caustics in propagation-invariant beams. **a–e** A Bessel beam J_1 with OAM of charge $\ell = 1$ has a circular caustic. **a** Fourier phase pattern, with azimuthally linearly increasing phase $\Phi = \ell\phi$, confined to an infinitesimal thin ring. Fourier transform by a lens. Fourier wavefront shaping determines the direction of the propagating rays, and the caustic **(b)** forms in real space as the envelope of the rays in a transverse plane **(c)**. A subset of the rays, each coming from a specific point on the ring, is shown in **(d)**. The complete family of rays is composed of a continuum of bundles like the one shown in **d** but displaced in z . The corresponding field has a propagation-invariant transverse intensity **(e)** with a pronounced central ring according to the circular caustic. **f–j** A more complex phase function $\Phi = \ell\phi - q/2 \sin(2\phi)$ yields an astroid caustic, which includes four cusp caustics.

the experimental verification of the propagation invariance of the astroid caustic, by showing a xz -cross-section of the measured intensity volume (corresponding to the white dashed line in Fig. 2e). This Bessel-lattice beam with charge $\ell = 0$ propagates for one Rayleigh length $z_e = 2k_0a^2 = 5.32$ mm without significantly changing its transverse intensity distribution. In general, all propagation-invariant beams realizable with our method have standard properties with respect to their diffraction length: theoretically these beams do not diffract, but experimental limitations such as finite apertures lead to finite but very long focal lengths^{19,22,23}. The detailed discussion of the experimentally achievable invariant length of such beams in Supplementary Note 2 suggests that an enlargement of the size (aperture) of the SLM (for a fixed wavelength λ_0) would have the largest effect on improving the distance of invariant propagation. Figure 2t, u shows a propagation-invariant Bessel-lattice beam $\psi_{2,5}^{BL}$, where the OAM with charge $\ell = 2$ has the effect of making the square lattice rectangular. An interesting effect can be explored in which the Bessel-lattice beam $\psi_{0,5}^{BL}$ from Fig. 2a–f is made to pass through a $\ell = 2$ phase vortex plate, resulting in the diffracting field $\psi = \psi_{0,5}^{BL} \cdot \exp[i\ell\phi]$. Its experimentally obtained initial intensity and phase distributions are shown in images Fig. 2v, w. A cross-section of the intensity under propagation is shown in Fig. 2x, where we can see that the beam stabilizes during evolution over one Rayleigh length z_e and acquires the shape corresponding to $\psi_{2,5}^{BL}$ as shown in Fig. 2y, z. Hence, the total momentum of the light field is conserved and transforms the initial (diffractive) state to its invariant form when propagating sufficiently far. In Supplementary Notes 1–5, we present further investigations and a generalization of this effect, which can be considered both as angular momentum transfer as well as a form self-healing^{2,19,35}.

The first approach described above allows finding the phase functions that produce different caustic shapes. However, a limitation of this approach becomes evident from the example of a cardioid caustic in Fig. 2m–r. Since each point of the Fourier ring contributes to one and only one caustic point, the caustic is either convex or at least the curvature always must have the same sign. That is, inflection points of the desired caustic cannot be included in the intensity distribution, and even regions of small curvature give very faint intensity features as can be appreciated in Fig. 2q. These limitations are overcome by the second approach described in what follows. More information on the algorithm and the experimental setup are given in the ‘Methods.’

Solving the inverse problem using Bessel beams as a pencil. The second method for producing propagation-invariant intensity features in the transverse plane that follow any desired curve is based on ‘drawing’ this curve using a 0th-order Bessel beam (whose caustic is a point) as a pencil. That is, the desired pattern is generated by superimposing coherently a continuum of 0th-order Bessel beams whose foci trace the anticipated curve. The ‘Methods’ section describes this algorithm in detail. Related approaches to create 3D high-intensity curves based on superimposing Gaussian beams or for lower-dimensional accelerating fields were demonstrated in^{36–38}, but without the propagation invariance achieved here. Figure 3 shows a collection of experimentally obtained propagation-invariant beams generated with this algorithm. A propagation-invariant straight line segment, measured over one Rayleigh length z_e , is shown in the top row of Fig. 3. By deftly superimposing differently oriented cusps, the propagation-invariant letters ‘AZ’ can be composed over the transverse plane shown in the second row of Fig. 3. The images presented in the third row of Fig. 3 show further propagation-

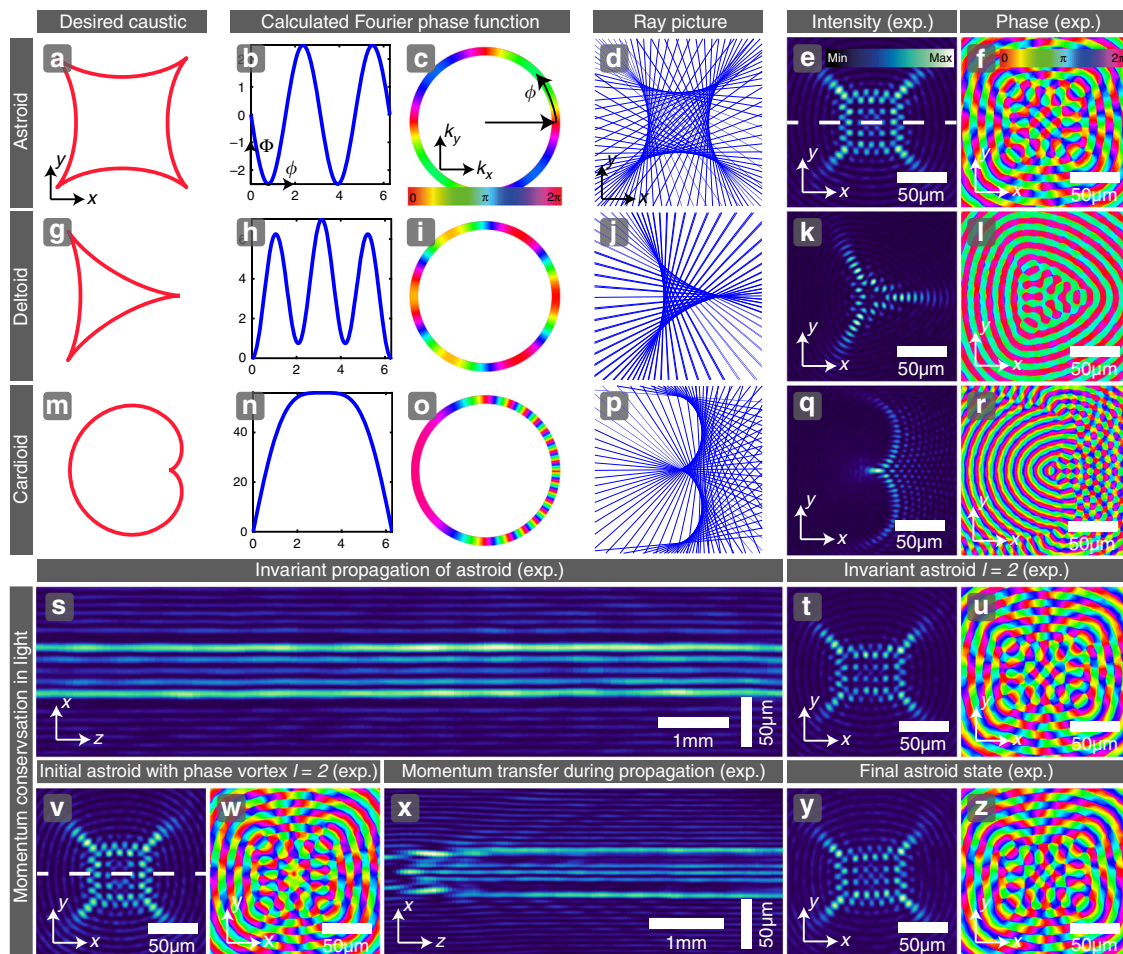


Fig. 2 Engineering desired caustics in light, demonstrating their propagation invariance and momentum conservation. **a–f** Astroid. **a** Desired caustic. **b** 1D phase function. **c** Phase function mapped onto 2D Fourier ring. **d** Transverse projection of the rays. **e, f** Experimentally measured transverse intensity and phase. **g–l** Deltoid. **m–r** Cardioid. **s** Invariant propagation of the astroid from image (**e**), xz -cross-section through the intensity volume. **t, u** Invariant astroid with charge $\ell = 2$. **v–z** Self-healing/momentum transfer in astroid: **v, w** Diffractive astroid, initial field with phase vortex of charge $\ell = 2$. **x** Propagation showing diffraction and transfer to final OAM state. **y, z** Momentum transfer to final astroid state same as (**e, f**), which then propagates invariantly.

invariant high-intensity rims in the initial transverse plane: a cardioid (i), a nephroid (j), a parabola (k), and a cusp (l) are examples of simple geometric shapes. Notice that the intensity is roughly uniform along the whole curve, regardless of the curvature. Smart beam design even allows for rather complex shapes, demonstrated as a proof of principle by imprinting the word ‘LIGHT’ into the light field, as shown in Fig. 3m. The quality of these complex intensity profiles can be further improved by engineering the interference more rigorously, i.e., by adjusting the relative phase differences of the individual caustic building blocks with respect to each other precisely. The propagation invariance of these and other beams created with the Bessel pencil method is demonstrated for the example of the cardioid from Fig. 3i in the sequence of images in Fig. 3n, whose intensity is preserved over a propagation distance of one Rayleigh length. We show further examples of transverse caustic shapes and their invariance during propagation in Supplementary Note 4.

Discussion

Caustics can be shaped into propagation-invariant light that presents any desired high-intensity curve in its transverse profile. We present methods to tailor the light’s wavefront, forming

translation invariant, customized caustics as the envelope of families of rays. The two approaches presented here are illustrated by experimentally implementing propagation-invariant beams whose caustics trace fundamental forms like astroids, deltoids, cardioids, and nephroids, as well as more sophisticated structures such as letters or words. These self-healing beams propagate robustly in the presence of perturbations. We demonstrate the properties of an astroid-shaped Bessel-lattice beam that interpolates between the sum of four plane waves and a Bessel beam. Propagation-invariant caustics satisfy the need for customized high-energy transfer in nano-fabrication applications with light or electron beams for ultrafast cutting and deep drilling in transparent materials^{10,11}. 2D caustic light, e.g., with centered periodic lattices and well-defined curvilinear borders, enables fabricating refractive index modulations in (nonlinear) materials for novel topological structures. Imaging systems like light sheet microscopy benefit from the robust long-focus propagation of high-intensity caustics with phase singularities^{14,15}. Similar to the alphabet of orthogonal states of Bessel beams with different order, the presented propagation-invariant caustics can be used to construct other families of orthogonal states with particular self-healing features, thus are highly important for secure high-dimensional (quantum) communication^{39,40}.

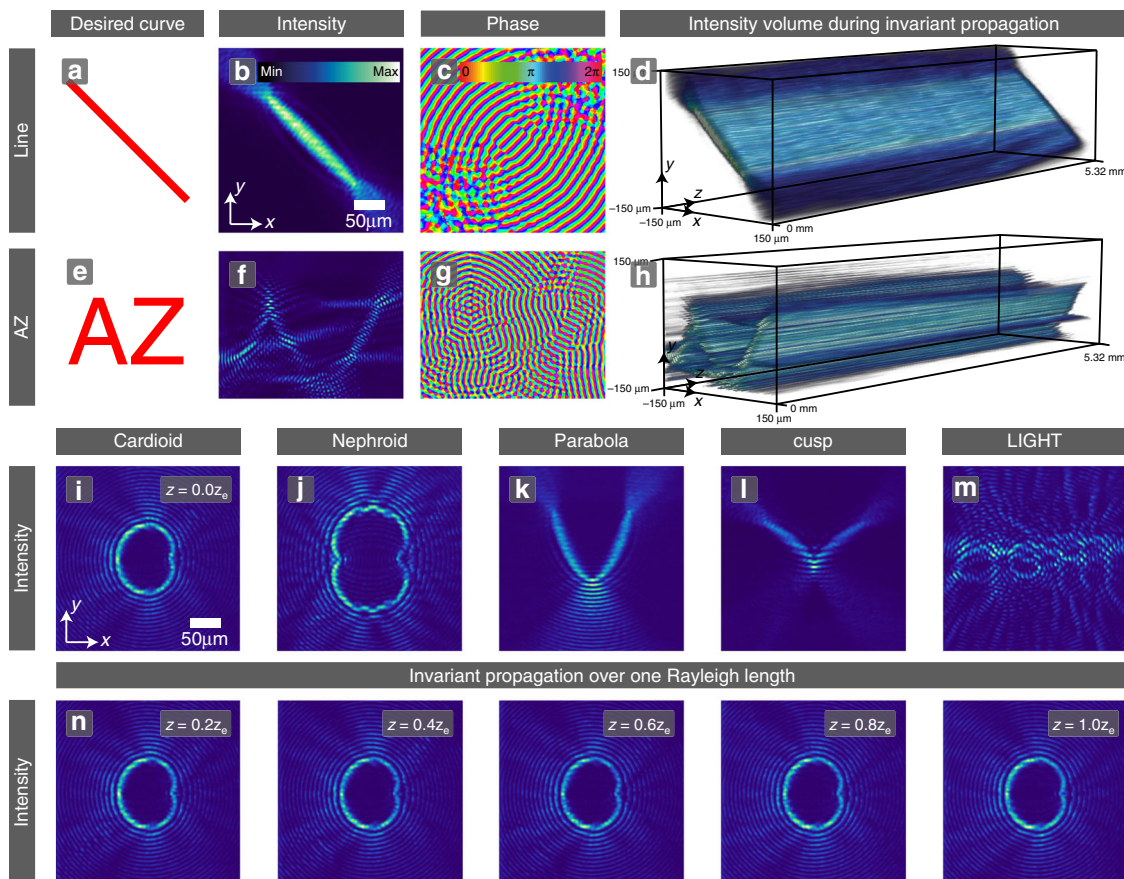


Fig. 3 Bessel pencil method for drawing any desired curve. (Top row) Straight line segment. **a** Desired curve. **b, c** Experimentally measured transverse intensity and phase. **d** Experimentally obtained intensity volume over one Rayleigh length. (Second row) Superposition of building blocks allows creating cuspid letters ‘AZ’ in propagation-invariant light. (Third row) Smart beam design facilitates complex structures: cardioid (**i**), nephroid (**j**), parabola (**k**), cusp (**l**) and the word ‘LIGHT’ in propagation-invariant light fields. **n** Proof of invariance during propagation at the example of the cardioid (**i**) over a distance of one Rayleigh length z_e .

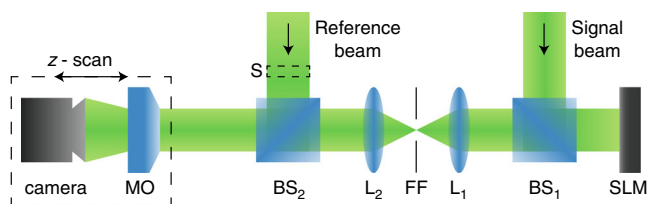


Fig. 4 Experimental setup. Nd:YVO₄ laser source, cw, wavelength $\lambda_0 = 532$ nm. SLM spatial light modulator, BS beam splitter, L lens, FF Fourier filter, MO microscope objective, S shutter.

Methods

Experimental setup. Figure 4 shows the experimental setup. A frequency-doubled cw Nd:YVO₄ laser beam with wavelength $\lambda_0 = 532$ nm is expanded in a plane wave, illuminating a phase-only full HD SLM ‘Holoeye HEO.’ We address a pre-calculated phase pattern to the SLM that allows encoding the real space amplitude and phase simultaneously on a single phase-only modulator⁴¹. Therefore, in the common focal plane of the lenses L1 ($f = 385$ mm) and L2 ($f = 38$ mm) an appropriate filter in Fourier space is necessary (FF). The desired light field forms in the image plane of the modulator. A movable microscope objective (MO), Olympus MPLN with a magnification of 10 and numerical aperture of 0.25, together with a camera, iDS UI-3370CP-M-GL, constitute the imaging system, capable of observing the propagation of a light field. A second expanded beam, a plane wave, serves as a reference beam and can be switched on for phase measurements using a shutter (S). To recover the spatial phase, a standard digital holographic method is applied, that is based on the superposition of the signal beam with a slightly tilted reference beam⁴².

First approach. The caustics, parametrized by ϕ , are located at the points \mathbf{r} for which the first and second derivatives of the phase of the integral in Eq. (1) with respect to ϕ vanish:

$$\Phi'(\phi) + k_{\perp} \mathbf{r} \cdot \mathbf{u}'(\phi) = 0, \quad \Phi''(\phi) - k_{\perp} \mathbf{r} \cdot \mathbf{u}(\phi) = 0. \quad (3)$$

Since \mathbf{u} and \mathbf{u}' are orthonormal and complete over the plane, we can write $\mathbf{r} = (\mathbf{r} \cdot \mathbf{u})\mathbf{u} + (\mathbf{r} \cdot \mathbf{u}')\mathbf{u}'$ to find the parametrized caustic:

$$\mathbf{r}_c(\phi) = \frac{1}{k_{\perp}} [\Phi''(\phi)\mathbf{u}(\phi) - \Phi'(\phi)\mathbf{u}'(\phi)]. \quad (4)$$

Note that the angular coordinate ϕ in the Fourier ring is not an angular coordinate in the caustic space. A parametrization of the caustic with ϕ as the parameter may be found by considering the derivative of both sides of the previous equation:

$$\mathbf{r}'_c(\phi) = \frac{1}{k_{\perp}} [\Phi'''(\phi) + \Phi'(\phi)]\mathbf{u}(\phi). \quad (5)$$

Cusps in the caustic can occur where $\mathbf{r}'_c(\phi) = 0$, namely, for values of ϕ for which $\Phi'''(\phi) + \Phi'(\phi) = 0$. Solving this differential equation allows for the realization of the light field $\psi(\mathbf{r})$ from Eq. (1) inversely, embedding in it the parametrized caustic $\mathbf{r}(\phi)$.

Second approach. A second approach to realize a desired curve is to use the most localized propagation-invariant light spot we can achieve, a 0th-order Bessel beam, as a pencil to draw the curve. Since $\ell = 0$, its caustic is a point. In accordance with Eq. (1), the angular spectrum for such a Bessel beam centered at \mathbf{r}_c is $A_B \exp[i\gamma_B - ik_{\perp} \mathbf{r}_c \cdot \mathbf{u}(\phi)]$. The key to designing the real space light field $\psi(\mathbf{r})$ is to construct the angular spectrum by coherent integration of this expression along the desired path $\mathbf{r}_c(\tau)$ and choosing the phase $\gamma_B(\tau)$ and amplitude $A_B(\tau)$ appropriately along the curve. Note that the parameter τ is not necessarily the azimuthal angle ϕ , but the arc length of the curve. Since the phase of the field along the curve should

grow with the curve's arc length τ , it is given as:

$$\gamma_B(\tau) = k_{\perp} \int_0^{\tau} |\mathbf{r}'_c(s)| ds. \quad (6)$$

Similarly, to make the weight uniform along the curve we use:

$$A_B(\tau) \propto 1/\sqrt{|\mathbf{r}'_c(\tau)|}. \quad (7)$$

The total light field that contains a high-intensity curve $\mathbf{r}_c(\tau)$, parametrized by τ , between two points A and B can then be calculated via the angular spectrum as:

$$\psi(\mathbf{r}) = \int_A^B A_B(\tau) \exp[iy_B(\tau) - ik_{\perp} \mathbf{r}_c(\tau) \cdot \mathbf{u}(\phi)] d\tau. \quad (8)$$

Data availability

The datasets generated during and/or analyzed during the current study are archived in the AP-WWU repository and are available from the corresponding author on reasonable request. [Source data](#) are provided with this paper.

Received: 4 October 2019; Accepted: 27 May 2020;

Published online: 17 July 2020

References

- Andrews, D.L. *Structured Light and its Applications: An Introduction to Phase-Structured Beams and Nanoscale Optical Forces* (Academic Press, Amsterdam, 2008).
- Rubinstein-Dunlop, H., Forbes, A., Berry, M. V., Dennis, M. R. & Andrews, D. L. et al. Roadmap on structured light. *J. Opt.* **19**, 013001–1–51 (2017).
- Hansen, A., Schultz, J. T. & Bigelow, N. P. Singular atom optics with spinor Bose-Einstein condensates. *Optica* **3**, 355–361 (2016).
- Wang, J., Yang, J.-Y., Fazel, I. M., Ahmed, N. & Yan, Y. et al. Terabit free-space data transmission employing orbital angular momentum multiplexing. *Nat. Photon.* **6**, 488–496 (2012).
- Torres, J. P. Optical communications: multiplexing twisted light. *Nat. Photon.* **6**, 420–422 (2012).
- Xie, Z., Lei, T., Li, F., Qiu, H. & Zhang, Z. et al. Ultra-broadband on-chip twisted light emitter for optical communications. *Light Sci. Appl.* **7**, 18001–1–6 (2018).
- Sit, A., Bouchard, F., Fickler, R., Gagnon-Bischoff, J. & Larocque, H. et al. High-dimensional intracity quantum cryptography with structured photons. *Optica* **4**, 1006–1010 (2017).
- Sit, A., Fickler, R., Alsaïari, F., Bouchard, F. & Larocque, H. et al. Quantum cryptography with structured photons through a vortex fiber. *Opt. Lett.* **43**, 4108–4111 (2018).
- Erhard, M., Fickler, R., Krenn, M. & Zeilinger, A. Twisted photons: new quantum perspectives in high dimensions. *Light Sci. Appl.* **7**, 17146–1–11 (2018).
- Mathis, A., Courvoisier, F., Froehly, L., Furfaro, L. & Jacquot, M. et al. Micromachining along a curve: femtosecond laser micromachining of curved profiles in diamond and silicon using accelerating beams. *Appl. Phys. Lett.* **101**, 071110–1–3 (2012).
- Courvoisier, F., Stoian, R. & Couairon, A. Ultrafast laser micro- and nano-processing with nondiffracting and curved beams. *Opt. Laser Technol.* **80**, 125–137 (2016).
- Hell, S. W. & Wichmann, J. Breaking the diffraction resolution limit by stimulated emission: stimulated-emission-depletion fluorescence microscopy. *Opt. Lett.* **19**, 780–782 (1994).
- Willig, K. I., Harke, B., Medda, R. & Hell, S. W. STED microscopy with continuous wave beams. *Nat. Methods* **4**, 915–918 (2007).
- Fahrbach, F. O., Simon, P. & Rohrbach, A. Microscopy with self-reconstructing beams. *Nat. Photon.* **4**, 780–785 (2010).
- Vettenburg, T., Dalgarno, H. I. C., Nylk, J., Coll-Lladó, C. & Ferrier, D. E. K. et al. Light-sheet microscopy using an Airy beam. *Nat. Methods* **11**, 541–544 (2014).
- Dholakia, K. & Čižmár, T. Shaping the future of manipulation. *Nat. Photon.* **5**, 335–342 (2011).
- Woerdemann, M., Alpmann, C., Esseling, M. & Denz, C. Advanced optical trapping by complex beam shaping. *Laser Photon. Rev.* **7**, 839–854 (2013).
- Allen, L., Padgett, M. J. & Babiker, M. The orbital angular momentum of light. *Prog. Opt.* **39**, 291–372 (1999).
- Bouchal, Z. Nondiffracting optical beams: physical properties, experiments, and applications. *Czechoslovak J. Phys.* **53**, 537–578 (2003).
- Whittaker, E. T. On the partial differential equations of mathematical physics. *Mathematische Ann.* **57**, 333–355 (1903).
- Durnin, J. Exact solutions for nondiffracting beams. I. The scalar theory. *J. Opt. Soc. Am. A* **4**, 651–654 (1987).
- Durnin, J., Miceli, J. J. & Eberly, J. H. Diffraction-free beams. *Phys. Rev. Lett.* **58**, 1499–1501 (1987).
- Rose, P., Boguslawski, M. & Denz, C. Nonlinear lattice structures based on families of complex nondiffracting beams. *New J. Phys.* **14**, 033018–1–10 (2012).
- Julián-Macías, I., Rickenstorff-Parrao, C., De Jesús Cabrera-Rosas, O., Espíndola-Ramos, E. & Juárez-Reyes, S. A. et al. Wavefronts and caustics associated with Mathieu beams. *J. Opt. Soc. Am. A* **35**, 267–274 (2018).
- Sosa-Sánchez, C. T., Silva-Ortigoza, G., Juárez-Reyes, S. A., De Jesús Cabrera-Rosas, O. & Espíndola-Ramos, E. et al. Parabolic non-diffracting beams: geometrical approach. *J. Opt.* **19**, 085604–1–5 (2017).
- Berry, M. V. & Balazs, N. L. Nonspreading wave packets. *Am. J. Phys.* **47**, 264–267 (1979).
- Siviloglou, G. A., Broky, J., Dogariu, A. & Christodoulides, D. N. Observation of accelerating Airy beams. *Phys. Rev. Lett.* **99**, 213901 (2007).
- Alonso, M. A. & Dennis, M. R. Ray-optical Poincaré sphere for structured Gaussian beams. *Optica* **4**, 476–486 (2017).
- Garcés-Chávez, V., McGloin, D., Melville, H., Sibbett, W. & Dholakia, K. Simultaneous micromanipulation in multiple planes using a self-reconstructing light beam. *Nature* **419**, 145–147 (2002).
- Meyer, R., Giust, R., Jacquot, M., Dudley, J. M. & Courvoisier, F. Submicron-quality cleaving of glass with elliptical ultrafast Bessel beams. *Appl. Phys. Lett.* **111**, 231108–1–5 (2017).
- Berry, M. V. & Upstill, C. Catastrophe optics: morphologies of caustics and their diffraction patterns. *Prog. Opt.* **18**, 257–323 (1980).
- Andreev, N. E., Aristov, Y. A., Polonskii, L. Y. & Pyatnitskii, L. N. Bessel beams of electromagnetic waves: self-effect and nonlinear structures. *Sov. Phys. JETP* **73**, 969–975 (1991).
- Palchikova, I. G. Diffraction-free beams and their caustics. *Opt. Lasers Eng.* **29**, 333–342 (1998).
- Bliokh, K. Y., Alonso, M. A., Ostrovskaya, E. A. & Aiello, A. Angular momenta and spin-orbit interaction of nonparaxial light in free space. *Phys. Rev. A* **82**, 063825–1–7 (2010).
- Anguiano-Morales, M., Martínez, A., Iturbe-Castillo, M. D., Chávez-Cerda, S. & Alcalá-Ochoa, N. Self-healing property of a caustic optical beam. *Appl. Opt.* **46**, 8284–8290 (2007).
- Rodrigo, J. A., Alieva, T., Abramochkin, E. & Castro, I. Shaping of light beams along curves in three dimensions. *Opt. Express* **21**, 20544–20555 (2013).
- Rodrigo, J. A. & Alieva, T. Freestyle 3D laser traps: tools for studying light-driven particle dynamics and beyond. *Optica* **2**, 812–815 (2015).
- Wen, Y., Liu, Z., Lin, S., Chen, Y., Zhang, Y. & Yu, S. Construction, characteristics, and constraints of accelerating beams based on caustic design. *Opt. Express* **26**, 32728–32738 (2018).
- Nape, I., Otte, E., Vallés, A., Rosales-Guzmán, C. & Cardano, F. et al. Self-healing high-dimensional quantum key distribution using hybrid spin-orbit Bessel states. *Opt. Express* **26**, 26946–26960 (2018).
- Otte, E., Nape, I., Rosales-Guzmán, C., Vallés, A., Denz, C. & Forbes, A. Recovery of nonseparability in self-healing vector Bessel beams. *Phys. Rev. A* **98**, 053818–1–9 (2018).
- Davis, J. A., Cottrell, D. M., Campos, J., Yzuel, M. J. & Moreno, I. Encoding Amplitude Information onto Phase-Only Filters. *Appl. Opt.* **38**, 5004–5013 (1999).
- Schnars, U. & Jueptner, W. *Digital Holography* (Springer, Heidelberg, 2005).

Acknowledgements

We are grateful for informative conversations with Danica Sugic and Eileen Otte. Ollie Dyer performed some preliminary calculations with Bessel-lattice beams. A.Z. and C.D. gratefully acknowledge support from the Open Access Publication Fund of the University of Muenster. M.A.A. acknowledges support from the National Science Foundation (PHY-1507278) and the Excellence Initiative of Aix-Marseille University—A*MIDEX, a French ‘Investissements d’Avenir’ program. M.R.D. gratefully acknowledges support from the Leverhulme Trust Research Programme RP2013-K-009, SPOCK: Scientific Properties of Complex Knots.

Author contributions

C.D., M.A.A., and M.R.D. designed the project, developed the theory, and supervised the research. A.Z., C.D., and M.R.D. contributed to the experimental design and obtained the data. A.Z. drafted the paper. All authors analyzed the data, defined the paper structure and worked on the paper.

Competing interests

The authors declare no competing interests.

Additional information

Supplementary information is available for this paper at <https://doi.org/10.1038/s41467-020-17439-3>.

Correspondence and requests for materials should be addressed to A.Z.

Peer review information *Nature Communications* thanks Michał Karpiński and the other, anonymous, reviewer(s) for their contribution to the peer review of this work.

Reprints and permission information is available at <http://www.nature.com/reprints>

Publisher's note Springer Nature remains neutral with regard to jurisdictional claims in published maps and institutional affiliations.



Open Access This article is licensed under a Creative Commons Attribution 4.0 International License, which permits use, sharing, adaptation, distribution and reproduction in any medium or format, as long as you give appropriate credit to the original author(s) and the source, provide a link to the Creative Commons license, and indicate if changes were made. The images or other third party material in this article are included in the article's Creative Commons license, unless indicated otherwise in a credit line to the material. If material is not included in the article's Creative Commons license and your intended use is not permitted by statutory regulation or exceeds the permitted use, you will need to obtain permission directly from the copyright holder. To view a copy of this license, visit <http://creativecommons.org/licenses/by/4.0/>.

© The Author(s) 2020