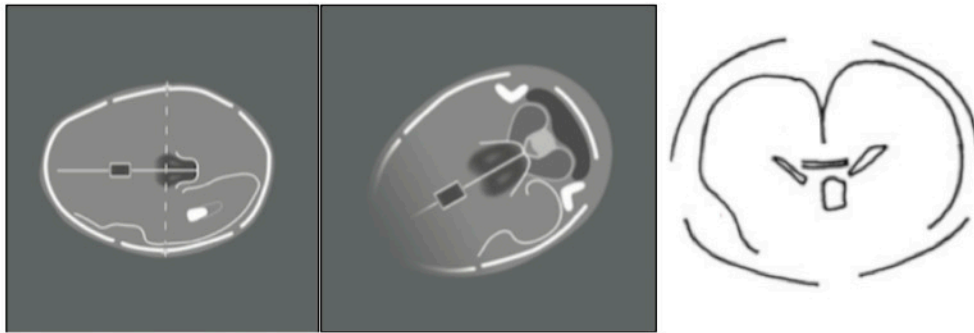


Task 1: 3 Consecutive planes* (Brain examination: Head circumference/Cerebellum view/coronal view)



*The plane represented in white color is not part of National recommendations for standard examination.

Task 2: 3 Consecutive planes (Heart examination: Four chambers/ Left ventricular outflow tract view/ Right ventricular outflow view).



Task 3: 3 Consecutive planes (Kidneys/Spine/Left Diaphragm)

