

SUPPLEMENTARY INFORMATION

Table S1. Fly lines used. chr. stands for chromosome.

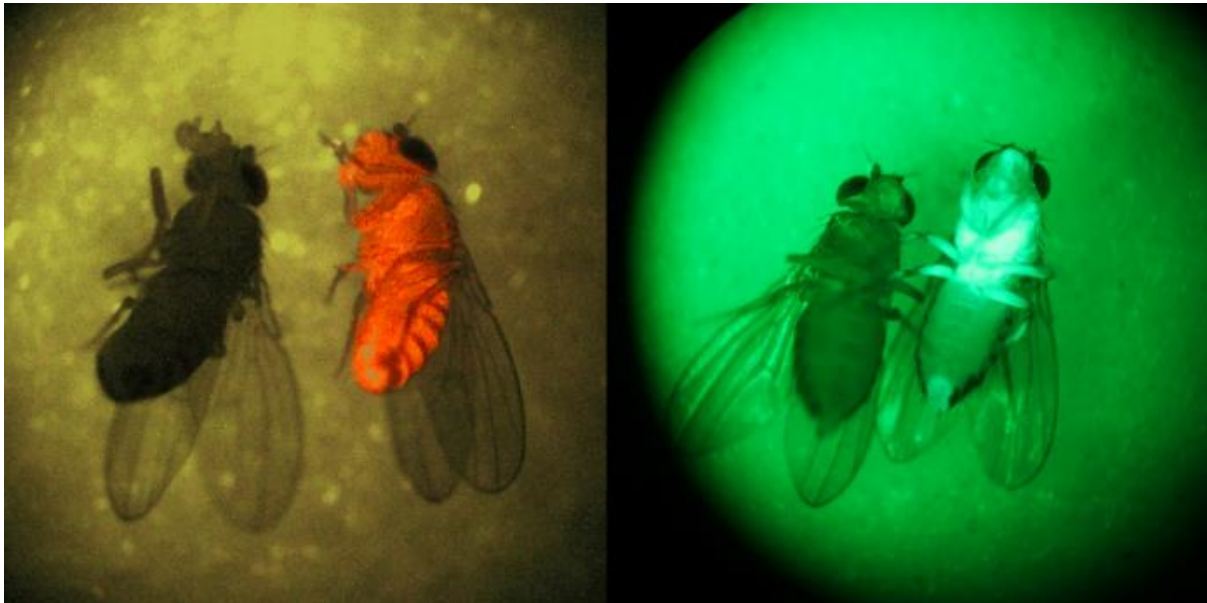
(a)		
	geographical origin	stock origin
African population		
Chipata 1.1	Zambia	Daniel Matute
Lower Zambia Valley 3.4	Zambia	Daniel Matute
Zimbabwe 30	Zimbabwe	Hope Hollocher
Cosmopolitan population		
IT-IV-69	Italy	DrosEU
FIN-I-15-17	Finland	DrosEU
Canton-S	USA	Mike Ritchie
(b)		
	marker (chr. location)	stock origin
Marker lines (Bloomington Stock Center Stock#)		
35496	RFP (chr. 2)	Marcus Bischoff
38463	GFP (chr. 3)	Bloomington Stock Center

- 1 **Table S2. Sample sizes per fly line combination along the experimental steps.** The two grey line combinations were
- 2 excluded from all data analyses because sexual isolation was too high.

focal male population	focal male line	male partner line	female line	n initial	n 1st mating trial	n mated	n 2nd mating trial	n remated	n offspring produced
African	Chipata1.1	IT-IV-69	IT-IV-69	54	48	45	30	22	20
African	LZV3.4	FIN-I-15-17	FIN-I-15-17	54	52	45	40	13	9
African	zim30	Canton-S	Canton-S	54	48	44	44	13	12
Cosmopolitan	Canton-S	zim30	zim30	54	50	4	NA	NA	NA
Cosmopolitan	FIN-I-15-17	LZV3.4	LZV3.4	54	45	1	NA	NA	NA
Cosmopolitan	IT-IV-69	Chipata1.1	Chipata1.1	54	53	23	23	12	12
					201	157	137	60	53

3

4 **Figure S1. Photographs of GFP, RFP, and wild-type flies.** We introgressed GFP
5 and RFP markers in multiple African and cosmopolitan lines (see line establishment
6 for details), and used them as paternity markers to assess postmating isolation. For
7 illustrative purposes, colours and contrasts of these photographs have been
8 manipulated by using the image editor GIMP (www.gimp.org).



9