



**HAL**  
open science

## **LES Modelling of the Impact of the Topography on Large-scale Exchange Flow in the Strait of Gibraltar**

Margaux Hilt, Laurent Roblou, Cyril Nguyen, Patrick Marchesiello, Florian Lemarié, Swen Jullien, Franck Dumas, Laurent Debreu, Xavier Capet, Lucie Bordois, et al.

► **To cite this version:**

Margaux Hilt, Laurent Roblou, Cyril Nguyen, Patrick Marchesiello, Florian Lemarié, et al.. LES Modelling of the Impact of the Topography on Large-scale Exchange Flow in the Strait of Gibraltar. Ocean Sciences Meeting 2020, Feb 2020, San Diego, United States. 2020. hal-02884740

**HAL Id: hal-02884740**

**<https://hal.science/hal-02884740>**

Submitted on 30 Jun 2020

**HAL** is a multi-disciplinary open access archive for the deposit and dissemination of scientific research documents, whether they are published or not. The documents may come from teaching and research institutions in France or abroad, or from public or private research centers.

L'archive ouverte pluridisciplinaire **HAL**, est destinée au dépôt et à la diffusion de documents scientifiques de niveau recherche, publiés ou non, émanant des établissements d'enseignement et de recherche français ou étrangers, des laboratoires publics ou privés.



Margaux Hilt<sup>1</sup>, Laurent Roblou<sup>1</sup>, Cyril Nguyen<sup>1</sup>, Patrick Marchesiello<sup>2</sup>, Florian Lemarié<sup>3</sup>, Swen Jullien<sup>4</sup>, Franck Dumas<sup>5</sup>, Laurent Debreu<sup>3</sup>, Xavier Capet<sup>6</sup>, Lucie Bordois<sup>5</sup>, Rachid Benshila<sup>7</sup>, Francis Auclair<sup>1</sup>

<sup>1</sup> Laboratoire d'Aérodynamique ; <sup>2</sup> LEGOS/IRD ; <sup>3</sup> Inria ; <sup>4</sup> Ifremer ; <sup>5</sup> Shom ; <sup>6</sup> LOCEAN/IPSL ; <sup>7</sup> LEGOS/CNRS

## Small-Scale dynamics of the Strait of Gibraltar

The Strait of Gibraltar connects the North Atlantic and the Mediterranean Sea. It is a narrow and shallow area where **intense mixing** changes the characteristics of Mediterranean and Atlantic waters<sup>1</sup>. Several small-scale (< 1 km) phenomena contribute to this mixing :

- Small amplitude internal gravity waves at the interface of Atlantic and Mediterranean waters.
- Hydraulic control at Camarinal Sill (and other locations) caused by tidal currents : an **hydraulic jump** is formed<sup>2</sup>.
- Shear instabilities in the Mediterranean vein<sup>3</sup>.
- The hydraulic jump is released during inflowing conditions and propagates eastward as a train of **Internal Solitary Waves (ISWs)**<sup>2</sup>.

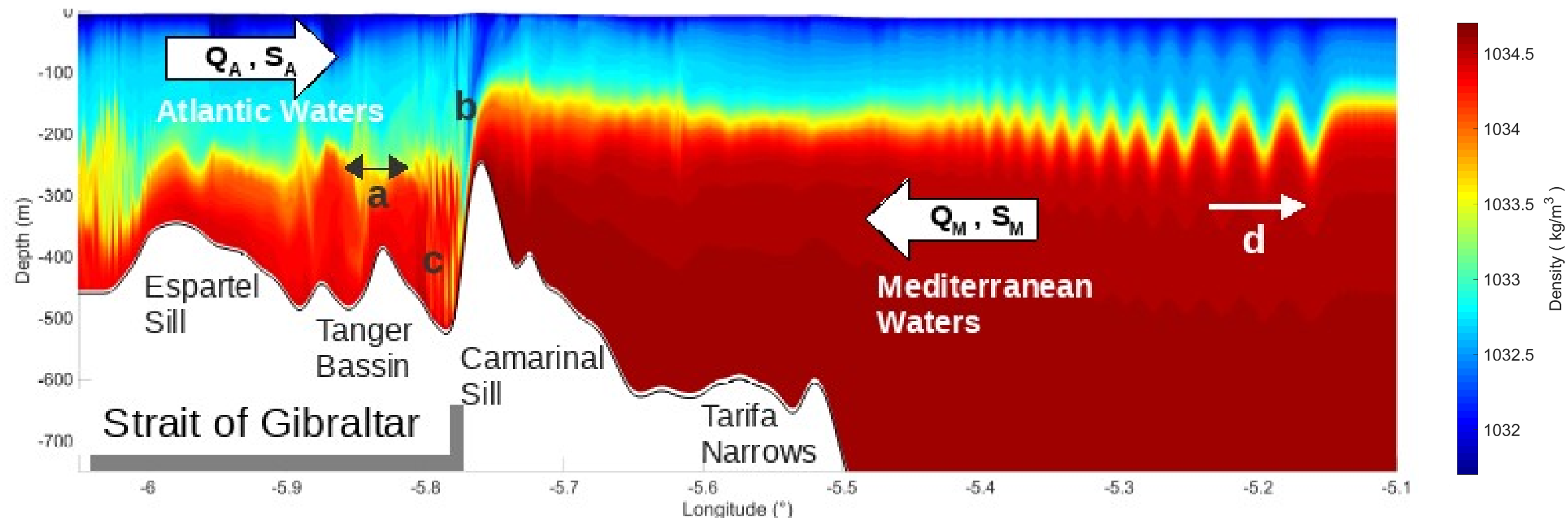


Fig. 1 : Vertical section of density in the longitudinal direction along the Strait of Gibraltar.

## Numerical Model : CROCO-NBQ

- CROCO is a free-surface, compressible, NH ocean model based on ROMS-AGRIF.
- NH pressure computed in "Fast Mode"<sup>4,5</sup>.
- Configuration based on a SHOM HR bathymetry.
- Initialization and lateral forcing from the ENEA Mediterranean and black Sea forecasting system<sup>6</sup>.

Domain	6°4.8'W 5°3.4'W ; 35°23.8'N 36°27.4'N	
Number of horizontal grid points ( $\Delta t_s, N_t, C_s$ )	2049 x 2621 (1 s, 11, 400 m/s)	
Number of vertical sigma levels	40	
Horizontal resolution dx	45 m	
Depth	Minimum	Maximum
	26 m	960 m
Vertical resolution	0.7 m	
Advection scheme	WENO-5	
Tidal components	M <sub>2</sub> , S <sub>2</sub> , H <sub>1</sub> , O <sub>1</sub>	
Turbulent closure scheme	Smagorinski or k-ε or no-closure scheme (Kp = ν = 10 <sup>-6</sup> m <sup>2</sup> /s)	
Simulation period	September 2017 (2 days)	

Table 1 : Main parameters of simulations.

## Detection of coherent turbulent structures

Billows of primary shear instabilities are detected for positive values of **Q-parameter**, second invariant of velocity gradient<sup>7</sup> :

$$Q = -\frac{1}{2} \frac{\partial u_i \partial u_j}{\partial x_j \partial x_i} = \frac{1}{2} (\Omega_{ij} \Omega_{ij} - S_{ij} S_{ij})$$

In outflowing conditions, patches of  $Q > Q_{\min}$  appear west of Camarinal Sill at the shear interface and are characterised by a roll-up of salinity. They are advected westward by the Mediterranean outflow.

## Detection of Hydraulic Jump

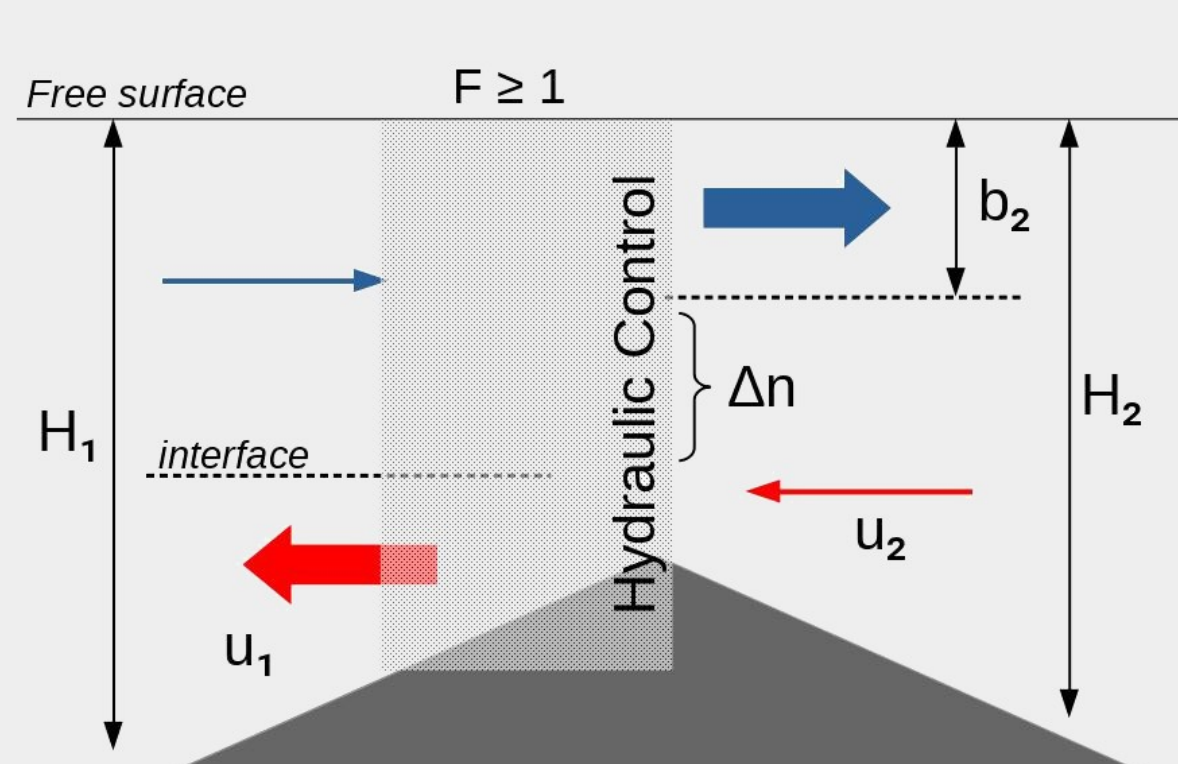


Fig. 2 : Schematic of hydraulic control over Camarinal Sill.

Flow criticality :  $F = \frac{u_1^2}{c^2} \geq 1$

Interface discontinuity : Acceleration of surface and bottom layers: detection if  $\Delta u_{\text{croco}} \geq \Delta u_{\text{theo}}$

$$\Delta u_s = -u_1 \frac{\Delta n}{b_2}, \quad \Delta u_b = -u_1 \frac{\Delta H + \Delta n}{H_2 - b_2}$$

$$|u_1| = c = \sqrt{g' \frac{(H_1 - \Delta n - b_2)(\Delta n + b_2)}{H_1}}$$

$b_2 \sim 50 \text{ m}, \Delta n \sim 20 \text{ m}, g' \approx 0.02 \text{ m/s}^2$

## Hydraulic Jump variability

LES of hydraulic control of large-scale circulation at Camarinal Sill.

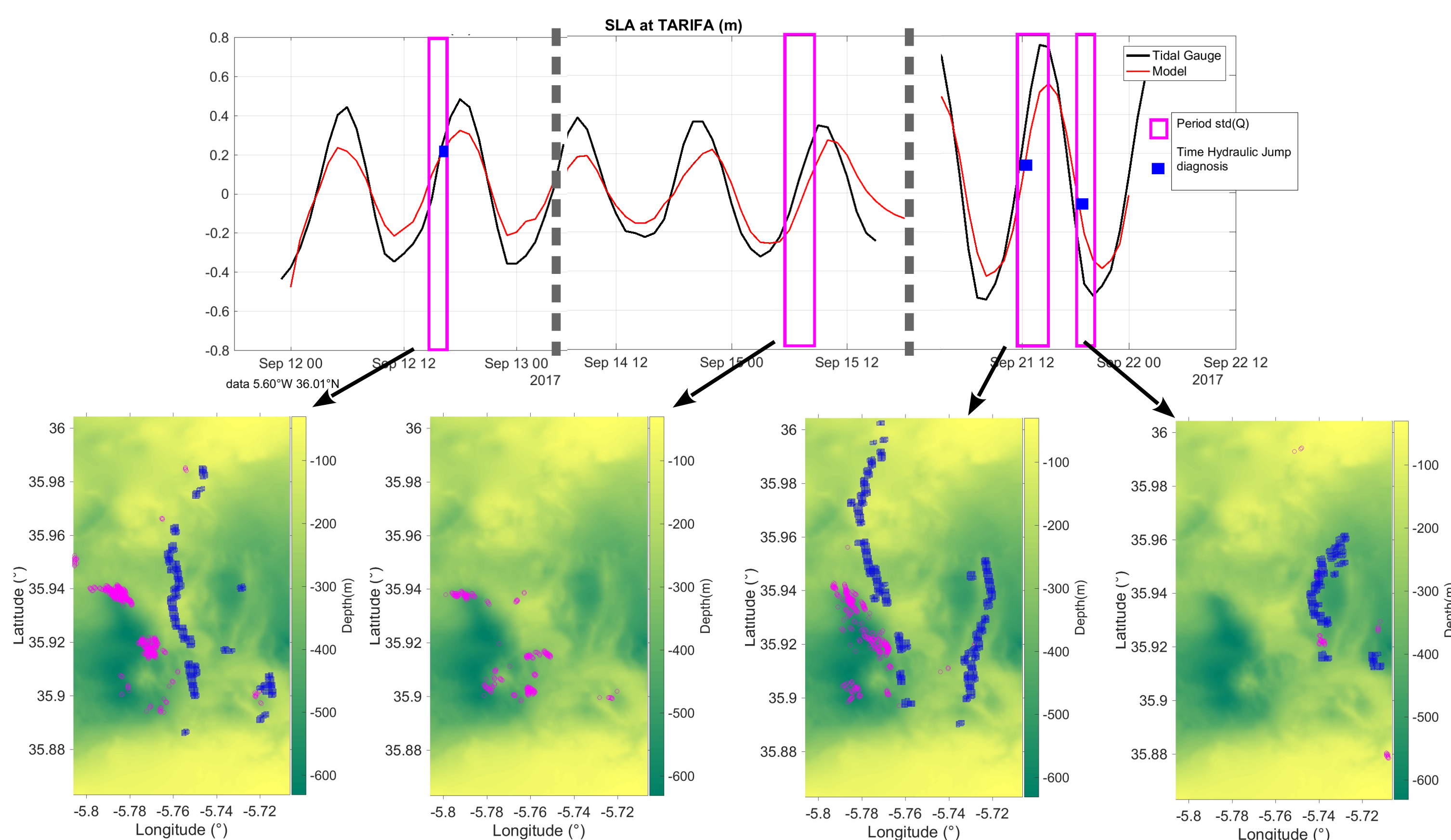


Fig. 4 : Tracking of hydraulic jumps and shear instabilities for several tidal regimes.

Upper panel : Sea level anomaly (cm) at Tarifa tidal gauge (black) and in the simulations (red). Pink rectangles : standard deviation of parameter Q. Blue squares : hydraulic jump.  
Lower panels : Bathymetry, (○) location of large values of standard deviation of Q in the water column, indicating where coherent structures propagate, and (□) position of hydraulic jumps indicated by  $\Delta u_{\text{croco}} \geq \Delta u_{\text{theo}}$  in both first and last vertical levels.

## Dynamics of coherent turbulent structures

LES of Kelvin-Helmholtz instabilities inducing mixing of water masses.

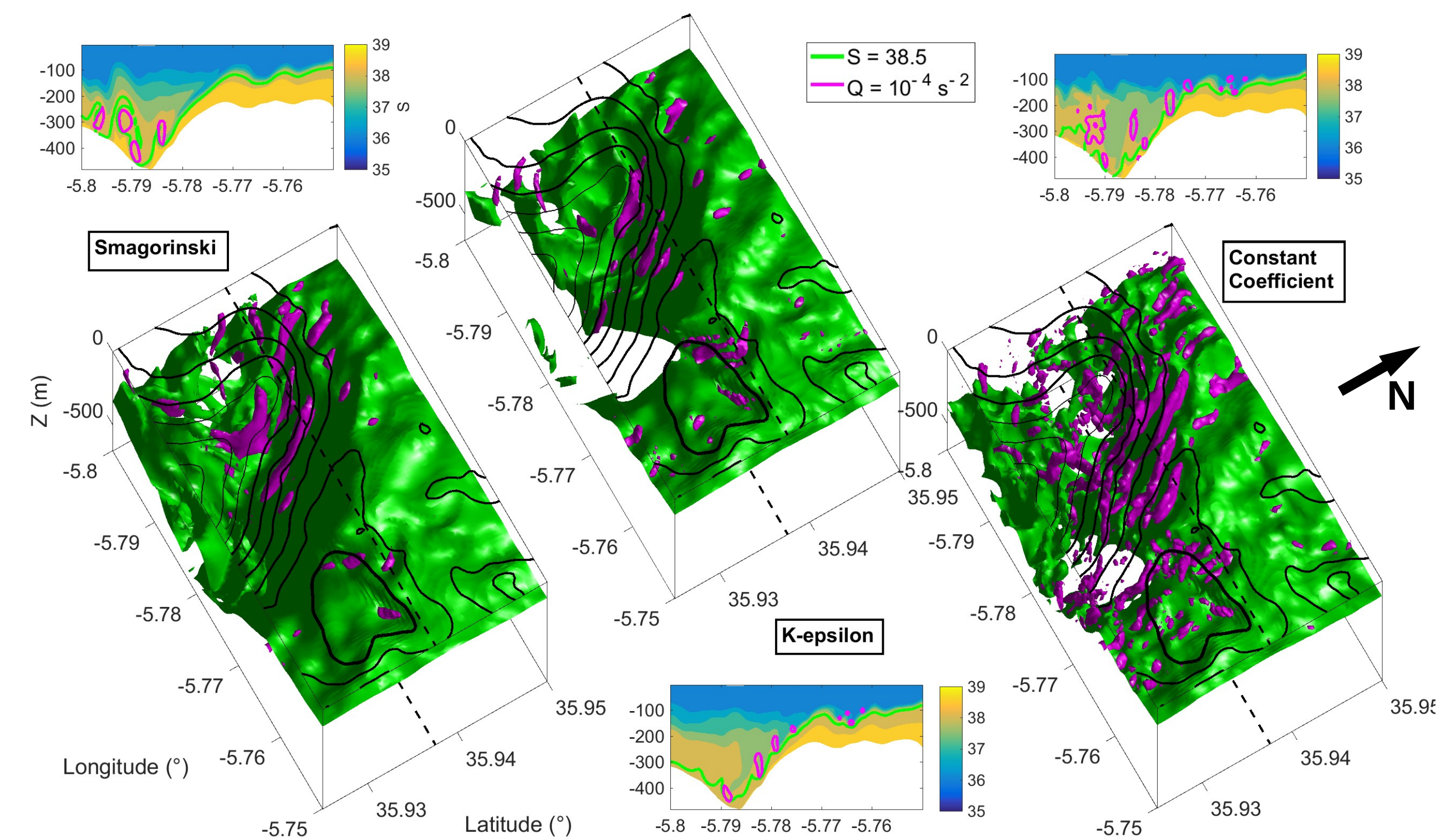


Fig. 3 : Sensitivity to turbulent closure schemes.

Isobathes (black), surface of constant salinity (green) & Q-parameter (pink) and vertical section of salinity for simulations (12/09/2017 - 3h40am) with different turbulent closure schemes (from left to right : Smagorinski, K-ε, and constant dissipation coefficients).

## Dynamics of Internal Solitary Waves

LES of the generation, propagation and reflection of ISWs.

Sentinel 1 – SAR

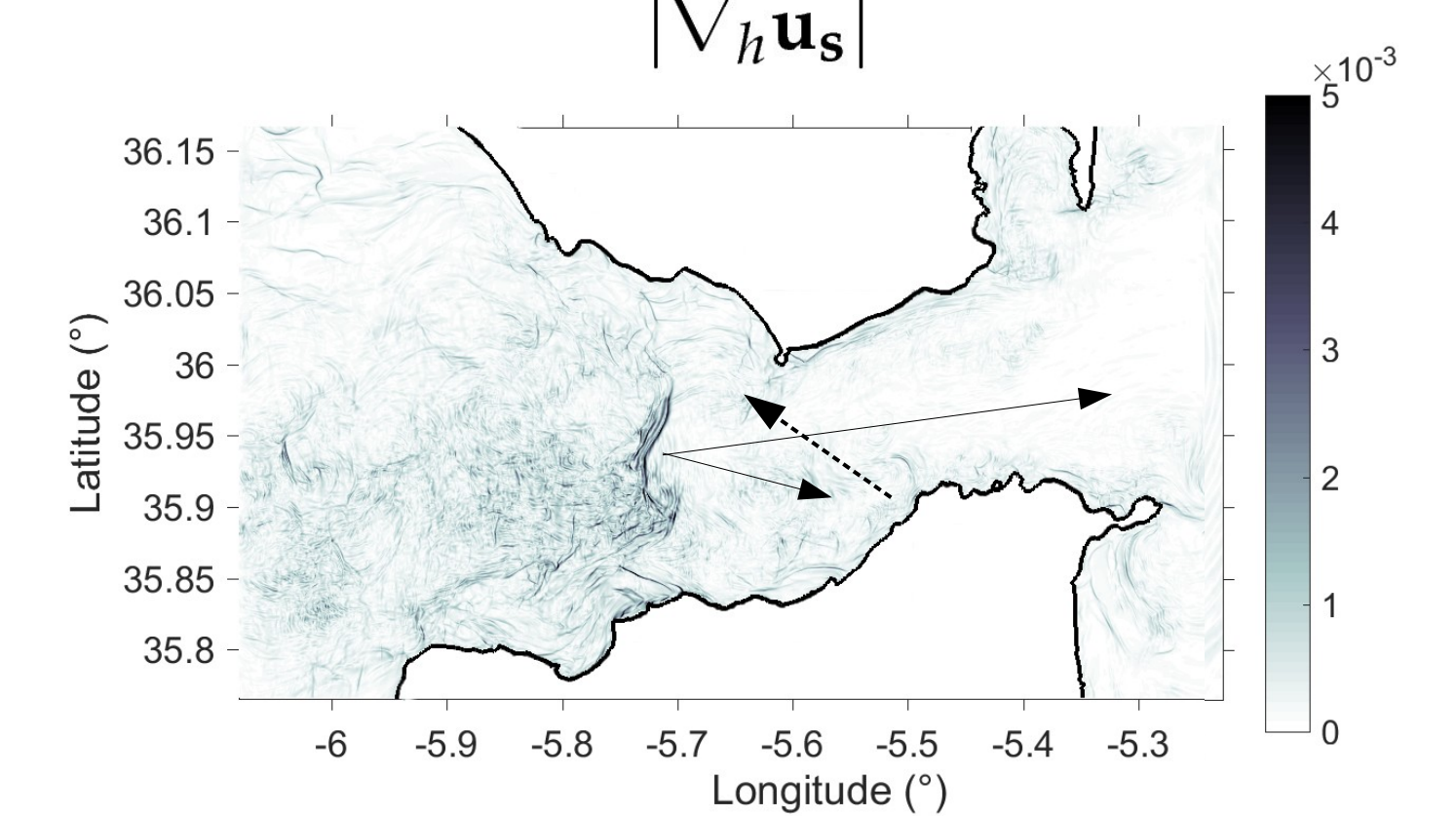


Fig. 5 : Comparison SAR / Simulation.

Left : Sentinel-1 Synthetic Aperture Radar (SAR) image (12/09/2017 - 6h18pm UTC).  
Right : Norm of the gradient of surface horizontal velocity (s<sup>-1</sup>) in the simulation (12/09/2017 - 6h30pm) and path of the ISW (reflection in dashed arrow).

## Perspectives : Gibraltar 2020 Campaign

- Observing the small-scale physics in the Strait of Gibraltar
- Assessing the effect of different numerical schemes on mixing in the Strait

In September-October 2020, the field campaign GEPETO aims at making direct observations of hydraulic jumps, coherent mixing structures and ISWs.

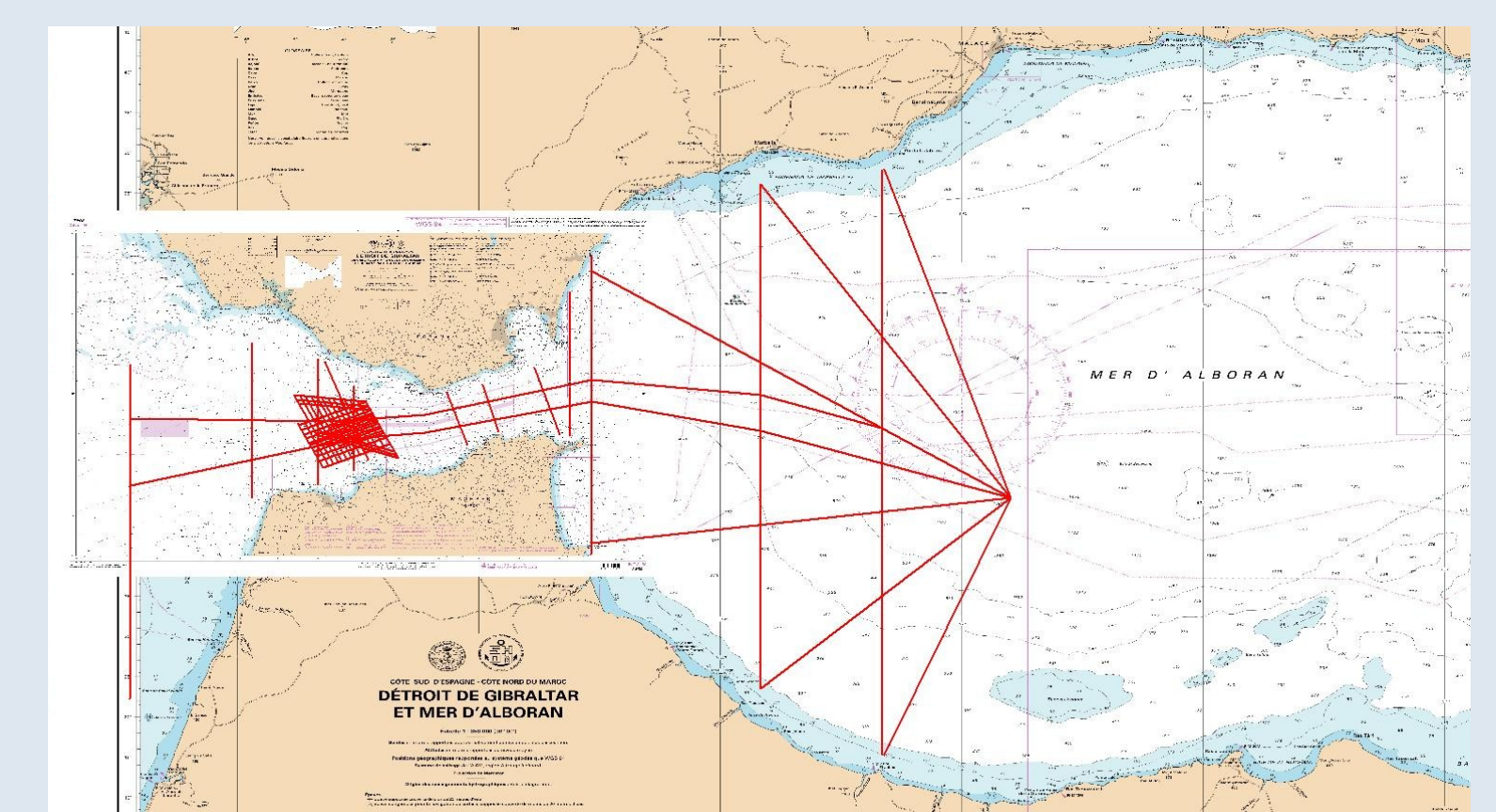


Fig. 6 : Potential radials for campaign GEPETO

## References :

- Millot, C. Heterogeneities of in- and out-flows in the mediterranean sea. Progress in Oceanography 120, 254 – 278. (2014)
- Farmer, D., Armi, L. The flow of atlantic water through the strait of gibraltar. Progress in Oceanography 21, 1–103. (1988)
- Wesson, J., Gregg, M. Mixing at Camarinal Sill in the Strait of Gibraltar. Journal of Geophysical Research: Oceans 99, 9847–9878. (1994)
- Auclair, F., et al. A non-hydrostatic non-Boussinesq algorithm for free-surface ocean modelling. Ocean Modelling 132, 12 – 29. (2018)

- Hilt, M., et al. 2019. Numerical Modelling of Hydraulic Control, Solitary Waves and Primary Instabilities in the Strait of Gibraltar. Ocean Modelling. (In revision)
- http://www.enea.it/it/seguici/publicazioni/pdf-volumi/cresco-report-2016.pdf
- Lesieur, M., Métais, O., & Comte, P. Vortex dynamics. In Large-Eddy Simulations of Turbulence (pp. 21-38). Cambridge: Cambridge University Press.(2005)