



HAL
open science

**Early detection of cardiovascular changes after
radiotherapy for Breast cancer Protocol for a European
multicenter prospective cohort study (MEDIRAD
EARLY HEART study)**

V. Walker, A. Crijs, J. Langendijk, D. Spoor, R. Vliegthart, S.E. Combs,
M. Mayinger, A. Eraso, F. Guedea, M. Fiuza, et al.

► **To cite this version:**

V. Walker, A. Crijs, J. Langendijk, D. Spoor, R. Vliegthart, et al.. Early detection of cardiovascular changes after radiotherapy for Breast cancer Protocol for a European multicenter prospective cohort study (MEDIRAD EARLY HEART study). *Journal of Medical Internet Research*, 2018, 20 (10), pp.e178. 10.2196/resprot.9906 . hal-02881785

HAL Id: hal-02881785

<https://hal.science/hal-02881785>

Submitted on 17 Jul 2020

HAL is a multi-disciplinary open access archive for the deposit and dissemination of scientific research documents, whether they are published or not. The documents may come from teaching and research institutions in France or abroad, or from public or private research centers.

L'archive ouverte pluridisciplinaire **HAL**, est destinée au dépôt et à la diffusion de documents scientifiques de niveau recherche, publiés ou non, émanant des établissements d'enseignement et de recherche français ou étrangers, des laboratoires publics ou privés.

Protocol

Early Detection of Cardiovascular Changes After Radiotherapy for Breast Cancer: Protocol for a European Multicenter Prospective Cohort Study (MEDIRAD EARLY HEART Study)

Valentin Walker¹, MSc; Anne Crijns², MD, PhD; Johannes Langendijk², MD, PhD; Daan Spoor², MSc; Rozemarijn Vliegthart³, MD, PhD; Stephanie E Combs^{4,5,6}, MD, PhD; Michael Mayinger⁴, MD; Arantxa Eraso⁷, MD, PhD; Ferran Guedea⁸, MD, PhD; Manuela Fiuza⁹, MD, PhD; Susana Constantino¹⁰, PhD; Radia Tamarat¹¹, PhD; Dominique Laurier¹², PhD; Jean Ferrières^{13,14}, MD, PhD; Elie Mousseaux¹⁵, MD, PhD; Elisabeth Cardis^{16,17,18}, PhD; Sophie Jacob¹, PhD

¹Pôle Santé-Environnement (PSE-SANTE), Service de recherche sur les effets biologiques et sanitaires des rayonnements ionisants (SESANE), Laboratoire d'épidémiologie des rayonnements ionisants (LEPID), Institut de Radioprotection et de Sécurité Nucléaire (IRSN), Fontenay-aux-Roses, France

²Department of Radiation Oncology, University Medical Center Groningen, University of Groningen, Groningen, Netherlands

³Center for Medical Imaging, Department of Radiology, University Medical Center Groningen, University of Groningen, Groningen, Netherlands

⁴Department of Radiation Oncology, Technische Universität München (TUM), München, Germany

⁵Department of Radiation Sciences (DRS), Institute of Innovative Radiotherapy (iRT), Helmholtz Zentrum München (HMGU), München, Germany

⁶Deutsches Konsortium für Translationale Krebsforschung (DKTK), Partner Site Munich, München, Germany

⁷Department of Radiation Oncology, Institut Català d'Oncologia, Girona, Spain

⁸Department of Radiation Oncology, Institut Català d'Oncologia, L'Hospitalet del Llobregat, Spain

⁹Department of Cardiology, Centro Cardiovascular da Universidade de Lisboa, Lisbon, Portugal

¹⁰Laboratory of Angiogenesis, Centro Cardiovascular da Universidade de Lisboa, Lisbon, Portugal

¹¹Pôle Santé-Environnement (PSE-SANTE), Institut de Radioprotection et de Sécurité Nucléaire (IRSN), Fontenay-aux-Roses, France

¹²Pôle Santé-Environnement (PSE-SANTE), Service de recherche sur les effets biologiques et sanitaires des rayonnements ionisants (SESANE), Institut de Radioprotection et de Sécurité Nucléaire (IRSN), Fontenay-aux-Roses, France

¹³Department of Cardiology B and Epidemiology, University Hospital, Toulouse, France

¹⁴Unité Mixte de Recherche (UMR) 1027, The Institut national de la santé et de la recherche médicale (INSERM), Toulouse, France

¹⁵Department of Radiology, Hôpital Européen Georges Pompidou, Paris Descartes University, Paris, France

¹⁶Institute for Global Health (ISGlobal), Radiation Programme, Barcelona Biomedical Research Park (PRBB), Barcelona, Spain

¹⁷Pompeu Fabra University (UPF), Barcelona, Spain

¹⁸Consorcio Centro de Investigación Biomédica en Red Epidemiología y Salud Pública (CIBERESP), Madrid, Spain

Corresponding Author:

Sophie Jacob, PhD

Pôle Santé-Environnement (PSE-SANTE), Service de recherche sur les effets biologiques et sanitaires des rayonnements ionisants (SESANE)

Laboratoire d'épidémiologie des rayonnements ionisants (LEPID)

Institut de Radioprotection et de Sécurité Nucléaire (IRSN)

BP17

Fontenay-aux-Roses,

France

Phone: 33 5 61 14 56 08

Email: sophie.jacob@irsn.fr

Abstract

Background: Breast cancer is the most common cancer among women, and radiotherapy plays a major role in its treatment. However, breast cancer radiotherapy can lead to incidental irradiation of the heart, resulting in an increased risk for a variety of heart diseases arising many years after radiotherapy. Therefore, identifying breast cancer patients at the highest risk for radiation-induced cardiac complications is crucial for developing strategies for primary and secondary prevention, which may

contribute to healthy aging. There is still a need for precise knowledge on the relationship between radiation dose to specific cardiac structures and early subclinical cardiac changes and their occurrence over time that could finally lead to cardiac complications.

Objective: The MEDIRAD EARLY HEART study aims to identify and validate new cardiac imaging and circulating biomarkers of radiation-induced cardiovascular changes arising within first 2 years of breast cancer radiotherapy and to develop risk models integrating these biomarkers combined with precise dose metrics of cardiac structures based on three-dimensional dosimetry.

Methods: The EARLY HEART study is a multicenter, prospective cohort study in which 250 women treated for breast cancer and followed for 2 years after radiotherapy will be included. Women treated with radiotherapy without chemotherapy for a unilateral breast cancer and aged 40-75 years meet the inclusion criteria. Baseline and follow-up data include cardiac measurements based on two-dimensional speckle-tracking echocardiography, computed tomography coronary angiography, cardiac magnetic resonance imaging, and a wide panel of circulating biomarkers of cardiac injury. The absorbed dose will be evaluated globally for the heart and different substructures. Furthermore, the dose-response relationship will allow modeling the radiation-induced occurrence and evolution of subclinical cardiac lesions and biomarkers to develop prediction models.

Results: This study details the protocol of the MEDIRAD EARLY HEART study and presents the main limits and advantages of this international project. The inclusion of patients began in 2017. Preliminary results are expected to be published in 2019, and complete analysis should be published in 2021.

Conclusions: The MEDIRAD EARLY HEART study will allow identifying the main cardiac imaging and blood-based determinants of radiation-induced cardiac injuries to better propose primary and secondary preventive measures in order to contribute to enhanced patient care and quality of life.

Trial Registration: ClinicalTrials.gov NCT03297346; <https://clinicaltrials.gov/ct2/show/NCT03297346> (Archived by WebCite at <http://www.webcitation.org/72KS7MIUU>)

Registered Report Identifier: RR1-10.2196/9906

(*JMIR Res Protoc* 2018;7(10):e178) doi: [10.2196/resprot.9906](https://doi.org/10.2196/resprot.9906)

KEYWORDS

biomarkers; breast cancer; cardiotoxicity; cardiac diagnostic imaging; radiotherapy; radiation dosimetry

Introduction

Cancer is a major burden on society, which is expected to increase worldwide due to the growth and aging of the population. Furthermore, breast cancer (BC) is the most commonly diagnosed cancer among women. In 2016, BC accounted for 29% of the total new cancer cases and 14% of the total cancer-related deaths among women worldwide [1]. While its incidence has been increasing in the past decade, the prognosis has markedly improved over the last decades with enhanced screening and medical support for these patients, resulting in longer life expectancy and 5-year relative survival rate > 60%-95% according to the age class in most Western countries [2]. This is due to improved detection programs and treatment modalities, including improved radiotherapy (RT) techniques. In the past few decades, RT has been increasingly used for the treatment of BC. Research has shown that RT presents a benefit in terms of reducing local recurrence and deaths resulting from BC [3]. Due to this increased survival rate, the interest in potential adverse effects and long-term consequences related to RT has spiked.

RT plays a major role in the treatment of BC, as >60% of all BC patients are irradiated as part of their curative treatment, and it improves outcome in terms of reducing the local recurrence and deaths resulting from BC [4]. However, BC RT can lead to incidental irradiation of the heart due to its presence within the irradiation field, resulting in an increased risk for a variety of heart diseases arising many years after RT [5], such as ischemic heart disease, congestive heart failure, arrhythmias,

conduction defects, valvular disease, or pericarditis, with relative risks within the range of 1.2-3.5 on comparing patients with left-sided BC (corresponding to patients with higher exposure to the heart) to patients with right-sided BC [6-8]. In parallel with the increase in the incidence of BC, the prevalence of BC survivors at risk for cardiac complications will, thus, gradually increase [3,4,6-8]. Technological developments in RT over the last decades, such as intensity-modulated radiotherapy or volumetric modulated arc therapy and deep inspiration breath-hold, have allowed for a marked reduction of cardiac doses, in particular for patients with left-sided BC; the mean heart dose has decreased from >5 Gy in the 1950s to <3 Gy in the last decade [9]. It has been shown that the use of these techniques in BC patients is of concern to the radiation oncologists and is widely implemented [10,11]. However, cardiac damage has been shown to be correlated with the mean heart dose, with a 7.4% increase in the rate of acute coronary events per 1 Gy (95% CI 2.9-14.5; $P < .001$), with no minimum threshold for risk [8]. The risk for acute coronary events within first 9 years of RT has recently been confirmed by an additional publication [12], showing marked relationship between cardiac radiation dose and acute coronary event incidence. Therefore, as there appears to be no threshold dose below which cardiac complications do not appear, radiation-induced cardiac diseases remain potential, severe, late complications of BC RT. Moreover, dose distributions in the heart are extremely heterogeneous, and some cardiac substructures such as the apex and the apical-anterior segment can still receive higher doses. Therefore, there is still an urgent need for preventive measures. Long before the onset of clinically significant late cardiac

complications, subclinical cardiac changes may occur over weeks, months, or years after RT that can be detected using anatomical and functional cardiac imaging or circulating biomarkers [13].

In the context of BC RT-induced functional cardiac changes, a recent advanced echocardiographic technique (automated two-dimensional speckle-tracking echocardiography, ECHO-ST, or cardiac strain) has been used for detecting and quantifying subtle (subclinical) disturbances in left ventricular strain and function. A Belgian team first showed that global longitudinal strain and strain rate were substantially decreased (mean 5%) during the first year following breast RT [14]. This result was confirmed by other studies in patients with left-sided BC whose global longitudinal strain and apical strain were diminished. In addition, the basal regions showed a compensatory increase in function, although not sufficient to compensate for the global functional loss resulting in a decrease in the global longitudinal strain [14-18]. Moreover, among patients with right-sided BC RT, a deterioration in basal anterior strain segments after RT was observed, whereas the global function remained unaffected [19].

Cardiac computed tomography (CT) without contrast and CT coronary angiography (CTCA) allows the determination of the coronary artery calcium (CAC) score and detection of plaques and stenosis along the coronary arteries. The presence and diffusion of calcium, plaque, and stenosis expose patients to a higher risk for coronary artery disease (CAD). Based on an analysis of 15 segments of coronary arteries per patient with acute chest pain, an increase in calcified and noncalcified plaques of around 15% was observed during a 2-year follow-up [20]. While this study did not consider radiation exposure of the heart, it does illustrate that the CTCA could be used for monitoring short-term coronary changes and has the potential to detect the onset or progression of early coronary changes due to irradiation among women treated with BC RT. To date, three studies have measured the amount of CAC in the years following RT treatment for BC. In two studies, no elevated CAC scores in BC patients were found 5-15.7 years after RT treatment, whereas one study did find an increase in the CAC score depending on the radiation dose to the heart [21-23]. Among the studies that did not find a CAC score increase, one did not include baseline CAC scores and the other only included a relatively small number of patients, making it difficult to draw definitive conclusions from these two studies. In young Hodgkin's lymphoma survivors (all aged <55 years), elevated CAC scores have been found 5-35 years after RT [24-26]. A study concerning the general population investigated CAC scores at baseline and after 10 years of follow-up [27]; the results showed that the diagnosis of cancer and its treatments were markedly associated with an increase in CAC scores even after accounting for cardiac risk factors. The results of these studies suggest that RT is associated with increased CAC scores in the long term and, therefore, support the hypothesis that accelerated atherosclerosis is one of the mechanisms contributing to an increase in RT-induced cardiac events after cardiac irradiation.

Cardiac magnetic resonance imaging (MRI), which is considered as the gold standard to characterize myocardial tissue and

measure ventricular volumes and function, was used to show that right ventricular systolic function was decreased in a BC cohort at 24 months after RT [16]. Furthermore, a decline in temporary ejection fraction was observed on MRI (in patients treated with three-dimensional [3D] conformal radiotherapy and not in patients treated with intensity-modulated radiotherapy) at 6 months, which resolved at 24 months. Left and right ventricular systolic functions determined using MRI were reduced at 24 months (but still within the normal range) for the whole cohort. Furthermore, using T1 mapping, a promising technique to quantify morphologic tissue injuries, it was shown in cancer survivors (including BC patients) that interstitial or diffuse myocardial fibrosis was elevated 3 years after anthracycline-based chemotherapy independent of the underlying cancer or comorbidities, suggesting that imaging biomarkers of interstitial fibrosis are related to prior receipt of potentially cardiotoxic cancer treatment [28], which may also include ionizing radiation.

A major challenge is the identification of reliable circulating biomarkers that could help diagnose and predict cardiotoxicity. Many classical biomarkers (eg, C-reactive protein, N-terminal pro-B-type natriuretic peptide, and troponin) have been shown to be potential biomarkers for cardiac damage after RT [29]. In addition, circulating inflammatory cytokines indicated tissue inflammation [30]. Radiation injury to the myocardium is primarily caused by damage to the microvasculature, leading to inflammatory and thrombotic changes, capillary loss, focal ischemia, and interstitial fibrosis [31,32]; these pathological changes can cause congestive heart failure.

One relatively recent advancement in this area is the discovery of circulating extracellular vesicles (EVs), including microparticles and exosomes, and their emergence as mediators of a new important mechanism of cell-to-cell communication [33]. The role of EVs in mediating vascular dysfunction suggests that they may represent novel pathways in short- or long-distance paracrine intercellular signaling in the vascular environment. High levels of circulating EVs (involving microparticles) found in many cardiovascular diseases demonstrate the importance of platelet, monocyte, and endothelial activation and could condition remote sustainability illnesses [34].

Exosomes carry a composite cargo of cardiac microRNAs (miRNAs). MiRNAs are posttranscriptional inhibitory regulators of gene expression that are emerging as important mediators of intercellular communication, being involved in the transmission of biological signals between cells. To date, several miRNAs have been identified as having a primary impact on many biological processes that are of direct relevance to cardiovascular complications. The exosomal trafficking of miRNAs from the heart is largely unexplored. Interventional cardiologists have already provided evidence that cardiac-expressed miRNAs (miR-1, miR-133a, miR-133b, miR-208a, miR-208b, and miR-499) increase in the blood acutely following a myocardial infarction, and some of these studies have additionally scrutinized the diagnostic potential of miRNAs by comparing them with cardiac troponin [35,36]. In a clinical study, it has been demonstrated that the plasma concentration of EVs and their cargo of cardiac miRNAs increased in patients undergoing

coronary artery bypass graft and were positively correlated with cardiac troponin [36]. Another hypothesis that remains to be explored is that the irradiation may be responsible for an increase in the number of circulating levels of EVs associated with certain miRNAs expressed by the cells of the heart tissue. Finally, studies have examined the global DNA methylation and risk for cardiovascular disease. The methylation of Bcl-2/adenovirus E1B 19kD-interacting protein 3, SuperOxide Dismutase, Glutathione S-transferase P, Apolipoprotein E, B-cell lymphoma 2, BCL-2-associated X protein, and tissue inhibitor of metalloproteinases-3 promoters has been associated with the presence of CAD, which is the most prevalent cardiovascular disease following the exposure to radiation and may be useful for diagnostic and monitoring purposes [37].

These previous studies have shown that early subclinical cardiac changes can occur in BC patients after RT. Additionally, classical cardiac biomarkers have been shown to be potential candidates to monitor cardiac damage after RT. Identifying the main cardiac imaging and blood-based determinants of radiation-induced cardiac injuries is crucial for developing strategies for primary and secondary prevention. Primary prevention includes radiation dose optimization to the most critical structures of the heart. Secondary prevention requires identification of patients at risk as early as possible before and after RT. So far, little has been done regarding the relationship between dose distribution to different anatomical cardiac structures during RT and early cardiovascular changes that may lead to cardiac complications. Mathematical models have been developed in recent years with the aim of using dosimetric data to estimate a complication probability—the Normal Tissue Complication Probability (NTCP) models. Research on parameters to optimize the NTCP models (physical imaging, dosimetry, and clinical) is a major challenge to improve knowledge on the relationship between a received dose and toxicity to healthy tissue [38,39]. Moreover, the enrichment of these models with biological data is fundamental to improve risk prediction. Primary and secondary prevention measures require precise knowledge of the relationship between the dose to specific cardiac structures and the occurrence of early subclinical cardiac changes over time. To date, little has been done on elucidating the specific relationships between doses to cardiac structures and subsequent early cardiac toxicity, and NTCP models have been poorly exploited [40]. However, a prerequisite for further sparing of tissue subregions, as well as the analysis of NTCP properties, requires prospective identification of these structures, and their dose-volume properties must be taken into account in prospective treatment planning [41].

In this context, in the frame of the European MEDIRAD project [42], the EARLY HEART study was launched in July 2017 with the aims of identifying and validating the most important cardiac imaging biomarkers (based on ECHO-ST, CTCA, and MRI) and circulating biomarkers of radiation-induced cardiovascular changes arising within first 2 years of BC RT and of developing risk prediction models, such as NTCP models, integrating these biomarkers combined with precise dose metrics of cardiac structures based on 3D-dosimetry.

Methods

Study Design

MEDIRAD EARLY HEART (NCT03297346) is a multicenter, prospective cohort study that will include female patients with left- and right-sided BC treated with postoperative RT without chemotherapy after primary breast-conserving surgery. The patients will be followed for 2 years after RT, based on cardiac imaging and circulating biomarkers further detailed below. Five investigating centers are involved in the study: Clinique Pasteur (Toulouse, France) for the Institute of Radiation Protection and Nuclear Safety (Fontenay-aux-Roses, France), the University Medical Center Groningen (UMCG; Groningen, the Netherlands), die Klinikum rechts der Isar der Technischen Universität München (TUM MED; Munich, Germany), Institut Català d'Oncologia (Girona, Spain), and Centro Cardiovascular da Universidade de Lisboa (Lisbon, Portugal). Furthermore, Paris Descartes University (Paris, France) is involved in the study as core lab for the centralized analysis of cardiac CT and cardiac MRI. Data collection is expected to be performed until autumn 2020.

Ethical Considerations

This study will be conducted in accordance with the Declaration of Helsinki (amended at the 64th World Medical Association General Assembly, Fortaleza, Brazil, October 2013) and in accordance with the principles of “Good Clinical Practice” and the Medical Research Involving Human Subjects Act (WMO). The 5 investigating centers have received approvals from their local ethical committees (France: Comité de Protection de Personnes Sud-Ouest IV, ID: CPP2015/66/2015-A00990-69-R1, and Agence Nationale de Sécurité des Médicaments, ID: 150873B-12; the Netherlands: Medisch Ethische Toetsingscommissie van het Universitair Medisch Centrum Groningen [METc UMCG], ID: METc 2017/379, NL62360.042.17; Germany: Ethikkommission der Technischen Universität München, ID: 235/17 S; Spain: Comitè d'Ètica d'Investigació CEAi GIRONA, ID: EARLY HEART v1.1 05/07/2017 i FIP v1.3; Portugal: Comissão de Ética do Centro Hospitalar Lisboa Norte e do Centro Académico de Medicina de Lisboa [CHLN e CAML], ID: 257/2017).

Study Population, Site Participation, and Recruitment

In this study, we plan to include 250 female patients with unilateral BC treated at the 5 participating centers with postoperative modern photon-based planning CT after breast-conserving surgery, without chemotherapy, who are aged 40-75 years at the time of RT. The determination of the size of the study population is based on power calculation detailed later.

Textbox 1 details the additional inclusion and exclusion criteria as well as early dismissal (after inclusion) criteria. Each patient is included at the baseline before RT and followed for 2 years after RT. Informed consent of each patient was collected before inclusion.

Textbox 1. Inclusion, exclusion, and early dismissal criteria in the EARLY HEART study.

| |
|--|
| <p>Inclusion criteria</p> <ul style="list-style-type: none"> • Female unilateral breast cancer patients • Treated with primary breast-conserving surgery for stage I-III invasive adenocarcinoma of the breast or ductal carcinoma <i>in situ</i> • Age 40-75 years at the time of starting radiotherapy • World Health Organization performance status 0-1 • Planned for radiotherapy alone to the breast with or without the lymph node areas • Radiotherapy based on planning-computed tomography using either three-dimensional conformal radiotherapy, intensity-modulated radiotherapy, or volumetric modulated arc therapy/RapidArc • Written informed consent <p>Exclusion criteria</p> <ul style="list-style-type: none"> • Male breast cancer patients • Neoadjuvant or adjuvant chemotherapy • M1 disease (metastatic breast cancer) • Medical history of coronary artery disease and myocardial infarction and atrial fibrillation • Previous thoracic or mediastinal radiation • Contraindications to injection of iodinated contrast such as allergy or renal failure • Pregnancy or lactation <p>Dismissal criteria</p> <ul style="list-style-type: none"> • Atrial fibrillation detected on electrocardiogram before radiotherapy • Abnormal echocardiography before radiotherapy defined as either left ventricular ejection fraction <50% or longitudinal strain \leq-16% or longitudinal strain rate <-1% or abnormal wall motion • Computed tomography coronary angiography results before radiotherapy requiring revascularization • Presence of myocardial infarction based on magnetic resonance imaging before radiotherapy |
|--|

Conduct of the Study

Before Inclusion

At each center, radiation oncologists enable first contact with women diagnosed with BC. During the first visit with the radiation oncologist, he or she presents the study and its implications to female patients for whom RT is planned. The radiation oncologist ensures that women meet the inclusion criteria in the study and study information leaflet detailing the protocol is given with a consent form.

Before Start of Radiotherapy

About 1-2 weeks before the start of RT, women agreeing to participate in the study hand their signed written informed consent form and are then considered as included. Once included, the women's follow-up protocol is implemented. Before the start of RT, several interventions are performed.

- An electrocardiogram to detect any arrhythmia, followed by an automated ECHO-ST, which is the most commonly used modality to evaluate myocardial dysfunction and a new technique for assessing myocardial deformation.
- CTCA using both low-dose, nonenhanced and enhanced CT scans to evaluate coronary artery lesions by assessing

morphological information, including plaques and stenosis of the arteries, and determination of the CAC score.

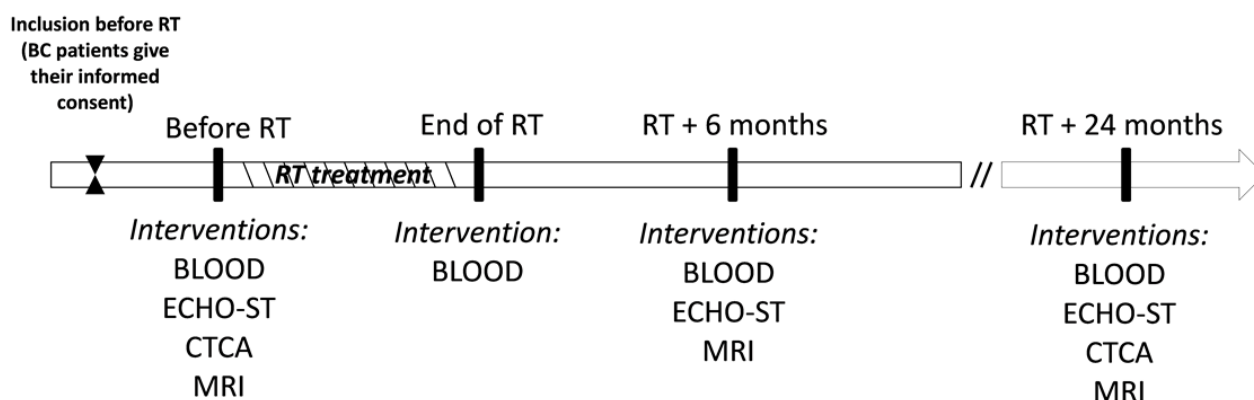
- MRI to measure the ventricular function and size and wall thickness of the two heart chambers; tissue characterization by delayed enhancement; and pre- or postcontrast T1 mapping and precontrast T2 mapping of the left ventricle.
- Blood sampling (BLOOD) will be performed to allow analyses of circulating biomarkers based on a panel of circulating classical and novel blood-based biomarkers (further details below).

Furthermore, toxicity is assessed according to the Common Terminology Criteria for Adverse Events (version 4.03), which is widely accepted throughout the oncology community as the standard classification and severity grading scale for adverse events in cancer therapy clinical trials and other oncology settings.

Subsequent Follow-Up

During subsequent follow-up, imaging and circulating biomarkers are collected at specific time points after RT up to 24 months: (1) at the end of RT: BLOOD; (2) 6 months after RT: ECHO-ST, MRI, and BLOOD; (3) 2 years after RT: electrocardiogram and ECHO-ST, CTCA, MRI, and BLOOD. [Figure 1](#) describes the different steps of the EARLY HEART study protocol.

Figure 1. Main steps of the EARLY HEART study protocol. RT: radiotherapy; BC: breast cancer; BLOOD: blood sample for circulating biomarkers; ECHO-ST: two-dimensional speckle-tracking echocardiography; CTCA: computed tomography coronary angiography; MRI: magnetic resonance imaging.



Data Collection

A precise description of the cancer and information about main risk factors of a cardiac event (eg, age, body mass index [BMI], smoking status, blood pressure, hypertension, diabetes, hypercholesterolemia, etc) are collected at inclusion. In addition, we collect information on the use of hormone therapy, such as antiaromatase, as it may lead to an increased cardiovascular risk [43,44]. Cardiac imaging (ECHO-ST, CT, and MRI) and circulating biomarkers measurements are detailed in [Textbox 2](#) and [Figures 1](#) and [2](#). Strain measurements will be based on automated ECHO-ST, which partly depends on the type of device (eg, GE, Philips, and Siemens). Not all the centers use the same device, but each patient from each center will be followed using the same device; this will allow comparing the evolution of strain measurements from baseline to the end of follow-up as a relative value, without been biased by the type of device [45].

Dosimetry

For cardiac dosimetry, automated segmentation of all cardiac structures (including coronary arteries) is performed to ensure the uniformity of the segmentation procedure across centers. This multiatlas automatic segmentation tool of the heart, developed by UMCG, is based on the atlas by Feng et al [48] (Mirada RTx [version 1.6]; Mirada Medical, Oxford, United Kingdom) [49]. This automatic segmentation allows reducing the interobserver variability in contouring organs at risk. With delineated volumes, it is possible to calculate the exact planned radiation dose for the different volumes of the heart. Using the individual doses of patients, the dose-effect relationship can be calculated independently of RT technique or treatment volume. For the cardiac structures such as the whole heart, left atrium, right atrium, left ventricle, right ventricle, strain segments of the left ventricle, and coronary arteries, a minimum dose (D_{\min}) is obtained, as well as a maximum dose (D_{\max}), a mean dose (D_{mean}), volumes of the structure receiving at least 1, 2, up to the total dose of Gy (V_1, V_2, \dots until the $V_{\text{total dose}}$). The same is obtained for the D_1, D_2, \dots up to D_{100} (the dose to 1%, 2%, up to the total of 100% of the volume).

Study Endpoints

Primary Endpoint

The primary endpoint is a mean decrease in the global longitudinal strain or global longitudinal strain rate, determined using cardiac ECHO-ST, of at least 2.5% between the baseline and 24 months after RT [50,51].

Secondary Endpoints

Secondary endpoints are defined as follows:

- Changes in myocardial function compared with baseline assessed using echocardiography 6-24 months after RT.
- Anatomical changes in coronary artery atherosclerosis compared with baseline (number of coronary segments containing any plaque or stenosis and calcium score) on CTCA 24 months after RT. The endpoint is defined as $\geq 15\%$ changes.
- Myocardial changes (morphology, function, tissue characterization by the delayed enhancement, and pre- or postcontrast T1 mapping) compared with baseline on MRI 6-24 months after RT. The endpoint is an increase in the mean precontrast T1 mapping value of, at least, 7%.
- Temporal changes in circulating biomarkers at the end of RT and 6-24 months after RT compared with baseline. The endpoint is a statistically significant increase or decrease in each biomarker between time points.

Statistical Analysis

Sample Size Calculation

The MEDIRAD EARLY HEART study includes 250 women. With 250 patients, this study will have a statistical power of 80% to detect a minimum decrease of 2.5% in global longitudinal strain between baseline measurement and 24 months after RT measurement [14]. The baseline value was derived from the literature: mean global longitudinal strain before RT = -16.5% (SD 2.1%) [52]. In addition, an alpha level of 5% was considered, based on paired tests for comparison with the baseline reference value. Furthermore, the final size was slightly increased to consider the possible loss to follow-up due to death or other reason.

Textbox 2. Main cardiac imaging and circulating biomarkers in the EARLY HEART study.

Two-dimensional speckle-tracking echocardiography

- Global and segmental longitudinal strain and strain rate (more details on the definition of segments in [Figure 2 \[46\]](#))
- Global and segmental radial strain and strain rate
- Left ventricular ejection fraction using Simpson's biplane method
- E/A wave ratio: ratio of peak velocity blood flow from gravity in early diastole (the E wave) to peak velocity flow in late diastole caused by atrial contraction (the A wave)
- E/Ea wave ratio: ratio of peak velocity blood flow from gravity in early diastole (the E wave) to Early diastolic velocity of lateral mitral annulus (e' lateral)
- Tricuspid annular plane systolic excursion
- Heart rate
- Cardiac output measured by multiplying heart rate by the stroke volume

Computed tomography coronary angiography

- Coronary artery calcium score, based on Agatston, volume, and mass; overall and per artery (left main coronary artery, left anterior descending artery, left circumflex artery, and right coronary artery)
- Presence and type of plaque (noncalcified, partly calcified, and calcified); overall and per segment or artery (more details in [Figure 3 \[47\]](#))
- Presence and severity of luminal narrowing based on plaque; overall and per segment or artery

Magnetic resonance imaging

- Cardiac morphology: right ventricular end-diastolic and end-systolic volumes, left ventricular end-diastolic and end-systolic volumes, left ventricular mass, etc
- Cardiac function: left ventricular ejection fraction, right ventricular ejection fraction
- Presence and extent of myocardial infarction based on delayed enhancement
- Tissue characterization based on pre- or postcontrast T1 mapping
- Presence of myocardial edema based on T2 mapping

Circulating biomarkers

- Classical markers:
 - Markers of cardiac injury: C-reactive protein, Troponin I, Troponin T, B-type natriuretic peptide (BNP), N-terminal-proBNP, beta2-microglobulin, Galectin 3
- New biomarkers:
 - Extracellular vesicles: microparticles: CD14 (monocytes), CD31 (endothelial), CD41 (platelets), CD3 (lymphocytes), CD235a (erythrocytes); exosomes
 - MicroRNAs (miRNAs): cardiac miRNAs (miR-1, miR-24, miR-133a/b, miR-208a/b, miR-210); noncardiovascular miRNAs (miR-122)
 - Circulating DNA methylation

Planned Analysis

Differences in biomarkers between unexposed and paired exposed groups (eg, right- vs left-sided breast RT) at different time points will be analyzed to generate preliminary hypotheses on the effects of RT on the heart. To investigate the time course of continuous variables extracted from ECHO-ST, CTCA, or MRI measurements and the relation with radiation dose to a variety of cardiac structures, mixed regression models will be used. Confounding variables such as age, blood pressure, BMI, smoking status, hypertension, hypercholesterolemia, or use of hormone therapy will be included in the risk models. Changes

in cardiac biomarkers will be correlated with dose distribution data. An integrative clinical-biological risk score will be developed for individual risk prediction and, finally, multivariable NTCP models will be constructed integrating these biomarkers combined with dose metrics of cardiac structures based on 3D-dosimetry.

All statistical analyses will be performed using SAS statistical software for Windows (SAS Institute, Cary, NC). Furthermore, linear regression models will be performed using generalized estimating equations (Proc Genmod) and linear mixed models (Proc Mixed). An alpha level of .05 will be accepted as significant.

Figure 2. Classification of the 17 segments of the left ventricle in bull’s-eye view, echocardiographic parasternal short-axis slices, and apical 4- and 2-chamber views.

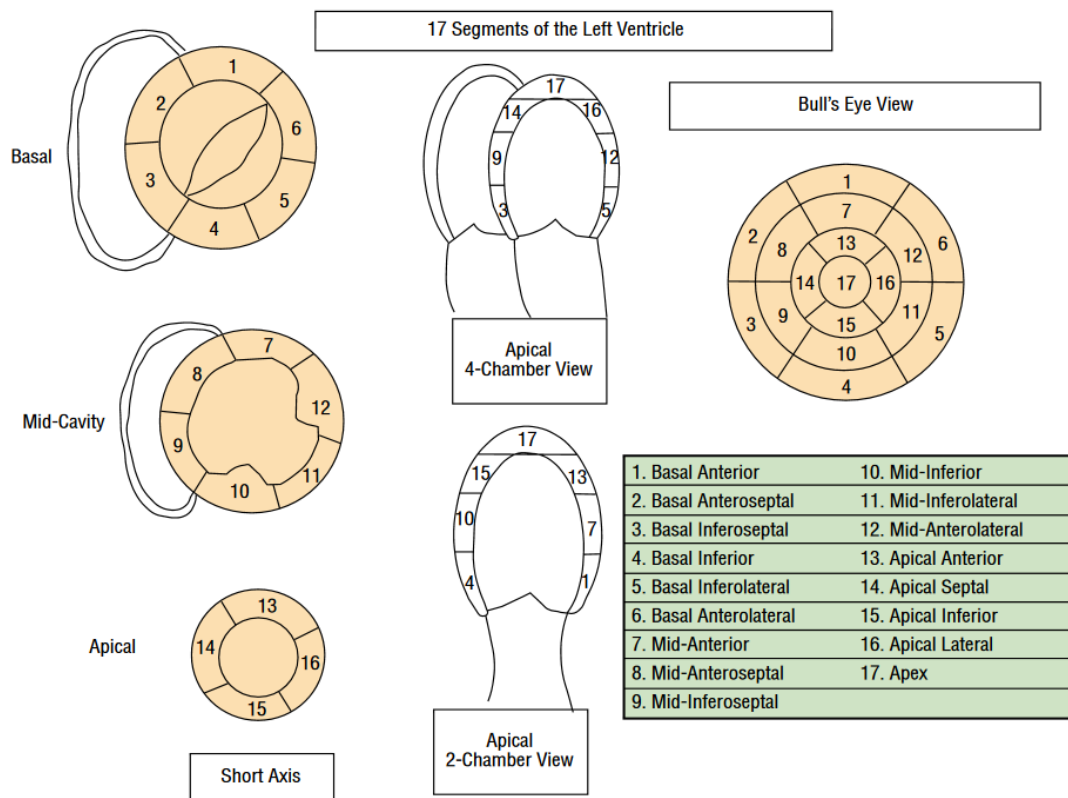
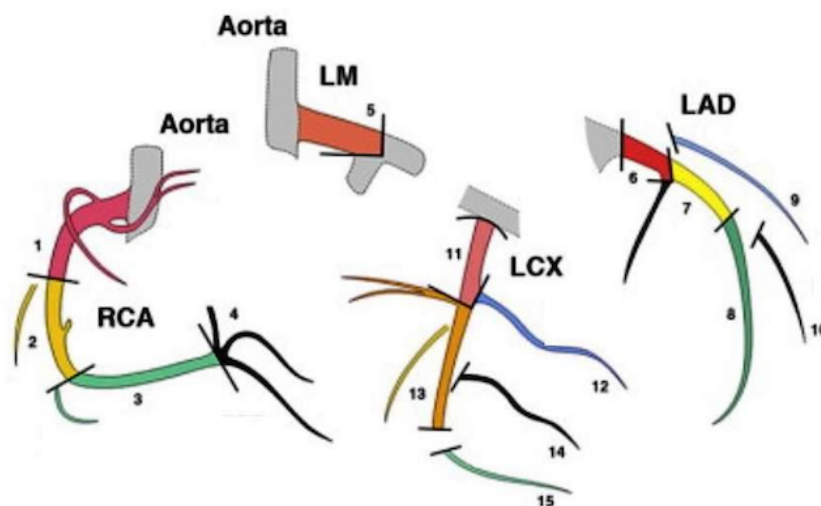


Figure 3. The 15 segments of the coronary arteries. LM: left main coronary; LAD: left anterior descending artery; LCX: left circumflex artery; RCA: right coronary artery.



Results

The inclusion of patients in this European cohort began in 2017. Preliminary results are expected to be published in 2019, and complete analysis should be published in 2021.

Discussion

Summary

The MEDIRAD EARLY HEART study is an original multidisciplinary approach to detect and evaluate early

radiation-induced cardiotoxicity based on a prospective multicenter cohort study that will finally include 250 patients. It was designed to combine both cardiac imaging information regarding potential early myocardial dysfunction, anatomical coronary changes, and changes in a large panel of circulating cardiac damage biomarkers occurring within first 2 years of RT, based on a precise cardiac dosimetry, allowing to analyze the effect of not only mean heart dose but also doses absorbed by specific heart structures, which better reflect the heterogeneity of dose absorbed by the heart. Provided with patients’ own biological, clinical, and dosimetric parameters,

our risk models should allow obtaining individualized risk for patients and enhance knowledge for primary and secondary prevention in these patients.

Strengths and Limitations

A strength of the MEDIRAD EARLY HEART study is the use of ECHO-ST, CTCA, and MRI, which is the most complete approach used for assessing cardiac changes so far. Effects of specific doses to the whole heart and to specific cardiac substructures have only been assessed in a few studies [8,53] that have revealed the importance of better knowledge for assessing the effects of RT to critical structures of the heart, including the effect of both radiation dose and volume of the heart exposed, further illustrated in a previous study that showed that the use of mean heart dose as a surrogate to the coronary doses was not reliable [47,53,54]. This heart substructure dosimetry was retained for the MEDIRAD EARLY HEART study with an automatic method for the treatment of dosimetry that should allow us to obtain consistent results. The approach of simultaneous assessment of multiple biomarkers, including EVs and cardiac miRNAs, has never been used before and should help understand some biological mechanisms involved in the radiation-induced cardiac changes. The study will allow

producing short-term results about subclinical cardiac changes but will not produce, at this stage, results on long-term consequences of early cardiovascular changes. The long-term significance of the observed changes will remain an important issue, and our results should help focus on “at-risk” patients for longer follow-ups.

Conclusions

In the context of RT, cardiac risks exist due to the presence of normal cardiac tissue in the irradiated field; this can, unfortunately, affect the quality of life of BC survivors, whose numbers are increasing. As a consequence, there is a need for further research to improve the early detection of late cardiac effects in mostly asymptomatic patients and also to improve the prediction and prevention among these patients [55]. MEDIRAD EARLY HEART results will allow for the optimization of RT protocols, leading to personalized treatments with increased therapeutic efficacy and will, therefore, contribute to improve the radiation protection of BC patients. Additionally, it should improve the prediction and prevention of potential lesions to normal cardiac tissues surrounding tumors and ultimately enhance patients' care and quality of life.

Acknowledgments

The EARLY HEART study is supported by the European Community's Horizon 2020 Programme, in the frame of the MEDIRAD-Implications of Medical Low Dose Radiation Exposure—a project for the period 2017-2021 (this project has received funding from the Euratom research and training programme 2014-2018 under grant agreement No. 755523).

Conflicts of Interest

None declared.

References

1. Siegel RL, Miller KD, Jemal A. Cancer statistics, 2016. *CA Cancer J Clin* 2016;66(1):7-30 [FREE Full text] [doi: [10.3322/caac.21332](https://doi.org/10.3322/caac.21332)] [Medline: [26742998](https://pubmed.ncbi.nlm.nih.gov/26742998/)]
2. Allemani C, Weir HK, Carreira H, Harewood R, Spika D, Wang X, et al. Global surveillance of cancer survival 1995-2009: analysis of individual data for 25,676,887 patients from 279 population-based registries in 67 countries (CONCORD-2). *Lancet* 2015 Mar 14;385(9972):977-1010 [FREE Full text] [doi: [10.1016/S0140-6736\(14\)62038-9](https://doi.org/10.1016/S0140-6736(14)62038-9)] [Medline: [25467588](https://pubmed.ncbi.nlm.nih.gov/25467588/)]
3. Early Breast Cancer Trialists' Collaborative Group (EBCTCG), Darby S, McGale P, Correa C, Taylor C, Arriagada R, et al. Effect of radiotherapy after breast-conserving surgery on 10-year recurrence and 15-year breast cancer death: meta-analysis of individual patient data for 10,801 women in 17 randomised trials. *Lancet* 2011 Nov 12;378(9804):1707-1716 [FREE Full text] [doi: [10.1016/S0140-6736\(11\)61629-2](https://doi.org/10.1016/S0140-6736(11)61629-2)] [Medline: [22019144](https://pubmed.ncbi.nlm.nih.gov/22019144/)]
4. Clarke M, Collins R, Darby S, Davies C, Elphinstone P, Evans V, Early Breast Cancer Trialists' Collaborative Group (EBCTCG). Effects of radiotherapy and of differences in the extent of surgery for early breast cancer on local recurrence and 15-year survival: an overview of the randomised trials. *Lancet* 2005 Dec 17;366(9503):2087-2106 [FREE Full text] [doi: [10.1016/S0140-6736\(05\)67887-7](https://doi.org/10.1016/S0140-6736(05)67887-7)] [Medline: [16360786](https://pubmed.ncbi.nlm.nih.gov/16360786/)]
5. Jacob S, Ferrières J. Breast cancer radiotherapy: A case of double jeopardy. *Arch Cardiovasc Dis* 2016 Nov;109(11):587-590 [FREE Full text] [doi: [10.1016/j.acvd.2016.09.001](https://doi.org/10.1016/j.acvd.2016.09.001)] [Medline: [27836785](https://pubmed.ncbi.nlm.nih.gov/27836785/)]
6. Darby SC, McGale P, Taylor CW, Peto R. Long-term mortality from heart disease and lung cancer after radiotherapy for early breast cancer: prospective cohort study of about 300,000 women in US SEER cancer registries. *Lancet Oncol* 2005 Aug;6(8):557-565. [doi: [10.1016/S1470-2045\(05\)70251-5](https://doi.org/10.1016/S1470-2045(05)70251-5)] [Medline: [16054566](https://pubmed.ncbi.nlm.nih.gov/16054566/)]
7. Giordano SH, Kuo Y, Freeman JL, Buchholz TA, Hortobagyi GN, Goodwin JS. Risk of cardiac death after adjuvant radiotherapy for breast cancer. *J Natl Cancer Inst* 2005 Mar 16;97(6):419-424 [FREE Full text] [doi: [10.1093/jnci/dji067](https://doi.org/10.1093/jnci/dji067)] [Medline: [15770005](https://pubmed.ncbi.nlm.nih.gov/15770005/)]
8. Darby SC, Ewertz M, McGale P, Bennet AM, Blom-Goldman U, Brønnum D, et al. Risk of ischemic heart disease in women after radiotherapy for breast cancer. *N Engl J Med* 2013 Mar 14;368(11):987-998. [doi: [10.1056/NEJMoa1209825](https://doi.org/10.1056/NEJMoa1209825)] [Medline: [23484825](https://pubmed.ncbi.nlm.nih.gov/23484825/)]

9. Taylor CW, Nisbet A, McGale P, Darby SC. Cardiac exposures in breast cancer radiotherapy: 1950s-1990s. *Int J Radiat Oncol Biol Phys* 2007 Dec 01;69(5):1484-1495. [doi: [10.1016/j.ijrobp.2007.05.034](https://doi.org/10.1016/j.ijrobp.2007.05.034)] [Medline: [18035211](https://pubmed.ncbi.nlm.nih.gov/18035211/)]
10. Duma M, Münch S, Oechsner M, Combs SE. Heart-sparing radiotherapy in patients with breast cancer: What are the techniques used in the clinical routine?: A pattern of practice survey in the German-speaking countries. *Med Dosim* 2017;42(3):197-202. [doi: [10.1016/j.meddos.2017.03.002](https://doi.org/10.1016/j.meddos.2017.03.002)] [Medline: [28502653](https://pubmed.ncbi.nlm.nih.gov/28502653/)]
11. Duma MN, Münch S, Oechsner M, Combs SE. Are heart toxicities in breast cancer patients important for radiation oncologists? A practice pattern survey in German speaking countries. *BMC Cancer* 2017 Aug 23;17(1):563 [FREE Full text] [doi: [10.1186/s12885-017-3548-2](https://doi.org/10.1186/s12885-017-3548-2)] [Medline: [28835224](https://pubmed.ncbi.nlm.nih.gov/28835224/)]
12. van den Bogaard VAB, Ta BDP, van der Schaaf A, Bouma AB, Middag AMH, Bantema-Joppe EJ, et al. Validation and Modification of a Prediction Model for Acute Cardiac Events in Patients With Breast Cancer Treated With Radiotherapy Based on Three-Dimensional Dose Distributions to Cardiac Substructures. *J Clin Oncol* 2017 Apr 10;35(11):1171-1178. [doi: [10.1200/JCO.2016.69.8480](https://doi.org/10.1200/JCO.2016.69.8480)] [Medline: [28095159](https://pubmed.ncbi.nlm.nih.gov/28095159/)]
13. Jacob S, Pathak A, Franck D, Latorzeff I, Jimenez G, Fondard O, et al. Early detection and prediction of cardiotoxicity after radiation therapy for breast cancer: the BACCARAT prospective cohort study. *Radiat Oncol* 2016 Apr 07;11:54 [FREE Full text] [doi: [10.1186/s13014-016-0627-5](https://doi.org/10.1186/s13014-016-0627-5)] [Medline: [27056179](https://pubmed.ncbi.nlm.nih.gov/27056179/)]
14. Erven K, Jurcut R, Weltens C, Giusca S, Ector J, Wildiers H, et al. Acute radiation effects on cardiac function detected by strain rate imaging in breast cancer patients. *Int J Radiat Oncol Biol Phys* 2011 Apr 01;79(5):1444-1451. [doi: [10.1016/j.ijrobp.2010.01.004](https://doi.org/10.1016/j.ijrobp.2010.01.004)] [Medline: [20605341](https://pubmed.ncbi.nlm.nih.gov/20605341/)]
15. Tuohinen SS, Skyttä T, Virtanen V, Luukkaala T, Kellokumpu-Lehtinen P, Raatikainen P. Early effects of adjuvant breast cancer radiotherapy on right ventricular systolic and diastolic function. *Anticancer Res* 2015 Apr;35(4):2141-2147. [Medline: [25862870](https://pubmed.ncbi.nlm.nih.gov/25862870/)]
16. Heggemann F, Grotz H, Welzel G, Dösch C, Hansmann J, Kraus-Tiefenbacher U, et al. Cardiac Function After Multimodal Breast Cancer Therapy Assessed With Functional Magnetic Resonance Imaging and Echocardiography Imaging. *Int J Radiat Oncol Biol Phys* 2015 Nov 15;93(4):836-844. [doi: [10.1016/j.ijrobp.2015.07.2287](https://doi.org/10.1016/j.ijrobp.2015.07.2287)] [Medline: [26530752](https://pubmed.ncbi.nlm.nih.gov/26530752/)]
17. Erven K, Florian A, Slagmolen P, Sweldens C, Jurcut R, Wildiers H, et al. Subclinical cardiotoxicity detected by strain rate imaging up to 14 months after breast radiation therapy. *Int J Radiat Oncol Biol Phys* 2013 Apr 01;85(5):1172-1178. [doi: [10.1016/j.ijrobp.2012.09.022](https://doi.org/10.1016/j.ijrobp.2012.09.022)] [Medline: [23149005](https://pubmed.ncbi.nlm.nih.gov/23149005/)]
18. Lo Q, Hee L, Baturalai V, Allman C, MacDonald P, Lonergan D, et al. Strain Imaging Detects Dose-Dependent Segmental Cardiac Dysfunction in the Acute Phase After Breast Irradiation. *Int J Radiat Oncol Biol Phys* 2017 Sep 01;99(1):182-190. [doi: [10.1016/j.ijrobp.2017.05.030](https://doi.org/10.1016/j.ijrobp.2017.05.030)] [Medline: [28816145](https://pubmed.ncbi.nlm.nih.gov/28816145/)]
19. Tuohinen SS, Skyttä T, Poutanen T, Huhtala H, Virtanen V, Kellokumpu-Lehtinen P, et al. Radiotherapy-induced global and regional differences in early-stage left-sided versus right-sided breast cancer patients: speckle tracking echocardiography study. *Int J Cardiovasc Imaging* 2017 Apr;33(4):463-472. [doi: [10.1007/s10554-016-1021-y](https://doi.org/10.1007/s10554-016-1021-y)] [Medline: [27873127](https://pubmed.ncbi.nlm.nih.gov/27873127/)]
20. Lehman SJ, Schlett CL, Bamberg F, Lee H, Donnelly P, Shturman L, et al. Assessment of coronary plaque progression in coronary computed tomography angiography using a semiquantitative score. *JACC Cardiovasc Imaging* 2009 Nov;2(11):1262-1270 [FREE Full text] [doi: [10.1016/j.jcmg.2009.07.007](https://doi.org/10.1016/j.jcmg.2009.07.007)] [Medline: [19909929](https://pubmed.ncbi.nlm.nih.gov/19909929/)]
21. Tjessem KH, Johansen S, Malinen E, Reinertsen KV, Danielsen T, Fosså SD, et al. Long-term cardiac mortality after hypofractionated radiation therapy in breast cancer. *Int J Radiat Oncol Biol Phys* 2013 Oct 01;87(2):337-343. [doi: [10.1016/j.ijrobp.2013.05.038](https://doi.org/10.1016/j.ijrobp.2013.05.038)] [Medline: [23886416](https://pubmed.ncbi.nlm.nih.gov/23886416/)]
22. Chang M, Suh J, Kirtani V, Dobrescu A, Haas J, Zeldis S, et al. Coronary Calcium Scanning in Patients after Adjuvant Radiation for Early Breast Cancer and Ductal Carcinoma In situ. *Front Oncol* 2013;3:253 [FREE Full text] [doi: [10.3389/fonc.2013.00253](https://doi.org/10.3389/fonc.2013.00253)] [Medline: [24093087](https://pubmed.ncbi.nlm.nih.gov/24093087/)]
23. Mast ME, Heijenbrok MW, van KML, Petoukhova AL, Scholten AN, Wolterbeek R, et al. Less increase of CT-based calcium scores of the coronary arteries : Effect three years after breast-conserving radiotherapy using breath-hold. *Strahlenther Onkol* 2016 Oct;192(10):696-704. [doi: [10.1007/s00066-016-1026-4](https://doi.org/10.1007/s00066-016-1026-4)] [Medline: [27534410](https://pubmed.ncbi.nlm.nih.gov/27534410/)]
24. Andersen R, Wethal T, Günther A, Fosså A, Edvardsen T, Fosså SD, et al. Relation of coronary artery calcium score to premature coronary artery disease in survivors >15 years of Hodgkin's lymphoma. *Am J Cardiol* 2010 Jan 15;105(2):149-152. [doi: [10.1016/j.amjcard.2009.09.005](https://doi.org/10.1016/j.amjcard.2009.09.005)] [Medline: [20102909](https://pubmed.ncbi.nlm.nih.gov/20102909/)]
25. Apter S, Shemesh J, Raanani P, Portnoy O, Thaler M, Zissin R, et al. Cardiovascular calcifications after radiation therapy for Hodgkin lymphoma: computed tomography detection and clinical correlation. *Coron Artery Dis* 2006 Mar;17(2):145-151. [Medline: [16474233](https://pubmed.ncbi.nlm.nih.gov/16474233/)]
26. Rademaker J, Schöder H, Ariaratnam NS, Strauss HW, Yahalom J, Steingart R, et al. Coronary artery disease after radiation therapy for Hodgkin's lymphoma: coronary CT angiography findings and calcium scores in nine asymptomatic patients. *AJR Am J Roentgenol* 2008 Jul;191(1):32-37. [doi: [10.2214/AJR.07.3112](https://doi.org/10.2214/AJR.07.3112)] [Medline: [18562721](https://pubmed.ncbi.nlm.nih.gov/18562721/)]
27. Whitlock MC, Yeboah J, Burke GL, Chen H, Klepin HD, Hundley WG. Cancer and Its Association With the Development of Coronary Artery Calcification: An Assessment From the Multi-Ethnic Study of Atherosclerosis. *J Am Heart Assoc* 2015 Nov 09;4(11) [FREE Full text] [doi: [10.1161/JAHA.115.002533](https://doi.org/10.1161/JAHA.115.002533)] [Medline: [26553214](https://pubmed.ncbi.nlm.nih.gov/26553214/)]

28. Jordan JH, Vasu S, Morgan TM, D'Agostino RB, Melendez GC, Hamilton CA, et al. Anthracycline-Associated T1 Mapping Characteristics Are Elevated Independent of the Presence of Cardiovascular Comorbidities in Cancer Survivors. *Circ Cardiovasc Imaging* 2016 Aug;9(8) [FREE Full text] [doi: [10.1161/CIRCIMAGING.115.004325](https://doi.org/10.1161/CIRCIMAGING.115.004325)] [Medline: [27502058](https://pubmed.ncbi.nlm.nih.gov/27502058/)]
29. D'Errico MP, Grimaldi L, Petruzzelli MF, Gianicolo EAL, Tramacere F, Monetti A, et al. N-terminal pro-B-type natriuretic peptide plasma levels as a potential biomarker for cardiac damage after radiotherapy in patients with left-sided breast cancer. *Int J Radiat Oncol Biol Phys* 2012 Feb 01;82(2):e239-e246. [doi: [10.1016/j.ijrobp.2011.03.058](https://doi.org/10.1016/j.ijrobp.2011.03.058)] [Medline: [21640499](https://pubmed.ncbi.nlm.nih.gov/21640499/)]
30. Ito T, Ikeda U. Inflammatory cytokines and cardiovascular disease. *Curr Drug Targets Inflamm Allergy* 2003 Sep;2(3):257-265. [Medline: [14561160](https://pubmed.ncbi.nlm.nih.gov/14561160/)]
31. Adams MJ, Lipshultz SE, Schwartz C, Fajardo LF, Coen V, Constine LS. Radiation-associated cardiovascular disease: manifestations and management. *Semin Radiat Oncol* 2003 Jul;13(3):346-356. [doi: [10.1016/S1053-4296\(03\)00026-2](https://doi.org/10.1016/S1053-4296(03)00026-2)] [Medline: [12903022](https://pubmed.ncbi.nlm.nih.gov/12903022/)]
32. Stewart FA, Hoving S, Russell NS. Vascular damage as an underlying mechanism of cardiac and cerebral toxicity in irradiated cancer patients. *Radiat Res* 2010 Dec;174(6):865-869. [doi: [10.1667/RR1862.1](https://doi.org/10.1667/RR1862.1)] [Medline: [21128810](https://pubmed.ncbi.nlm.nih.gov/21128810/)]
33. Flamant S, Tamarat R. Extracellular Vesicles and Vascular Injury: New Insights for Radiation Exposure. *Radiat Res* 2016 Aug;186(2):203-218 [FREE Full text] [doi: [10.1667/RR14482.1](https://doi.org/10.1667/RR14482.1)] [Medline: [27459703](https://pubmed.ncbi.nlm.nih.gov/27459703/)]
34. Boulanger CM, Scoazec A, Ebrahimian T, Henry P, Mathieu E, Tedgui A, et al. Circulating microparticles from patients with myocardial infarction cause endothelial dysfunction. *Circulation* 2001 Nov 27;104(22):2649-2652 [FREE Full text] [Medline: [11723013](https://pubmed.ncbi.nlm.nih.gov/11723013/)]
35. Widera C, Gupta SK, Lorenzen JM, Bang C, Bauersachs J, Bethmann K, et al. Diagnostic and prognostic impact of six circulating microRNAs in acute coronary syndrome. *J Mol Cell Cardiol* 2011 Nov;51(5):872-875. [doi: [10.1016/j.yjmcc.2011.07.011](https://doi.org/10.1016/j.yjmcc.2011.07.011)] [Medline: [21806992](https://pubmed.ncbi.nlm.nih.gov/21806992/)]
36. Emanuelli C, Shearn AIU, Laftah A, Fiorentino F, Reeves BC, Beltrami C, et al. Coronary Artery-Bypass-Graft Surgery Increases the Plasma Concentration of Exosomes Carrying a Cargo of Cardiac MicroRNAs: An Example of Exosome Trafficking Out of the Human Heart with Potential for Cardiac Biomarker Discovery. *PLoS One* 2016;11(4):e0154274 [FREE Full text] [doi: [10.1371/journal.pone.0154274](https://doi.org/10.1371/journal.pone.0154274)] [Medline: [27128471](https://pubmed.ncbi.nlm.nih.gov/27128471/)]
37. Duan L, Hu J, Xiong X, Liu Y, Wang J. The role of DNA methylation in coronary artery disease. *Gene* 2018 Mar 10;646:91-97. [doi: [10.1016/j.gene.2017.12.033](https://doi.org/10.1016/j.gene.2017.12.033)] [Medline: [29287712](https://pubmed.ncbi.nlm.nih.gov/29287712/)]
38. Trott K, Doerr W, Facoetti A, Hopewell J, Langendijk J, van LP, et al. Biological mechanisms of normal tissue damage: importance for the design of NTCP models. *Radiother Oncol* 2012 Oct;105(1):79-85. [doi: [10.1016/j.radonc.2012.05.008](https://doi.org/10.1016/j.radonc.2012.05.008)] [Medline: [22748390](https://pubmed.ncbi.nlm.nih.gov/22748390/)]
39. Acosta O, Drean G, Ospina JD, Simon A, Haigron P, Lafond C, et al. Voxel-based population analysis for correlating local dose and rectal toxicity in prostate cancer radiotherapy. *Phys Med Biol* 2013 Apr 21;58(8):2581-2595 [FREE Full text] [doi: [10.1088/0031-9155/58/8/2581](https://doi.org/10.1088/0031-9155/58/8/2581)] [Medline: [23528429](https://pubmed.ncbi.nlm.nih.gov/23528429/)]
40. Cella L, Oh JH, Deasy JO, Palma G, Liuzzi R, D'Avino V, et al. Predicting radiation-induced valvular heart damage. *Acta Oncol* 2015 Nov;54(10):1796-1804 [FREE Full text] [doi: [10.3109/0284186X.2015.1016624](https://doi.org/10.3109/0284186X.2015.1016624)] [Medline: [25800857](https://pubmed.ncbi.nlm.nih.gov/25800857/)]
41. Duma MN, Herr A, Borm KJ, Trott KR, Molls M, Oechsner M, et al. Tangential Field Radiotherapy for Breast Cancer-The Dose to the Heart and Heart Subvolumes: What Structures Must Be Contoured in Future Clinical Trials? *Front Oncol* 2017;7:130 [FREE Full text] [doi: [10.3389/fonc.2017.00130](https://doi.org/10.3389/fonc.2017.00130)] [Medline: [28674678](https://pubmed.ncbi.nlm.nih.gov/28674678/)]
42. MEDIRAD project: Implications of Medical Low Dose Radiation Exposure. URL:<http://www.medirad-project.eu/> [accessed 2018-01-22] [WebCite Cache ID [6wVy00LQH](https://www.webcitation.org/6wVy00LQH)]
43. Mouridsen H, Keshaviah A, Coates AS, Rabaglio M, Castiglione-Gertsch M, Sun Z, et al. Cardiovascular adverse events during adjuvant endocrine therapy for early breast cancer using letrozole or tamoxifen: safety analysis of BIG 1-98 trial. *J Clin Oncol* 2007 Dec 20;25(36):5715-5722. [doi: [10.1200/JCO.2007.12.1665](https://doi.org/10.1200/JCO.2007.12.1665)] [Medline: [17998546](https://pubmed.ncbi.nlm.nih.gov/17998546/)]
44. Arimidex, Tamoxifen, Alone or in Combination Trialists' Group, Buzdar A, Howell A, Cuzick J, Wale C, Distler W, et al. Comprehensive side-effect profile of anastrozole and tamoxifen as adjuvant treatment for early-stage breast cancer: long-term safety analysis of the ATAC trial. *Lancet Oncol* 2006 Aug;7(8):633-643. [doi: [10.1016/S1470-2045\(06\)70767-7](https://doi.org/10.1016/S1470-2045(06)70767-7)] [Medline: [16887480](https://pubmed.ncbi.nlm.nih.gov/16887480/)]
45. Lang RM, Badano LP, Mor-Avi V, Afilalo J, Armstrong A, Ernande L, et al. Recommendations for cardiac chamber quantification by echocardiography in adults: an update from the American Society of Echocardiography and the European Association of Cardiovascular Imaging. *J Am Soc Echocardiogr* 2015 Jan;28(1):1-39.e14. [doi: [10.1016/j.echo.2014.10.003](https://doi.org/10.1016/j.echo.2014.10.003)] [Medline: [25559473](https://pubmed.ncbi.nlm.nih.gov/25559473/)]
46. San RJA, Candell-Riera J, Arnold R, Sánchez PL, Aguadé-Bruix S, Bermejo J, et al. Quantitative analysis of left ventricular function as a tool in clinical research. Theoretical basis and methodology. *Rev Esp Cardiol* 2009 May;62(5):535-551 [FREE Full text] [Medline: [19406068](https://pubmed.ncbi.nlm.nih.gov/19406068/)]
47. Austen WG, Edwards JE, Frye RL, Gensini GG, Gott VL, Griffith LS, et al. A reporting system on patients evaluated for coronary artery disease. Report of the Ad Hoc Committee for Grading of Coronary Artery Disease, Council on Cardiovascular Surgery, American Heart Association. *Circulation* 1975 Apr;51(4 Suppl):5-40. [Medline: [1116248](https://pubmed.ncbi.nlm.nih.gov/1116248/)]

48. Feng M, Moran JM, Koelling T, Chughtai A, Chan JL, Freedman L, et al. Development and validation of a heart atlas to study cardiac exposure to radiation following treatment for breast cancer. *Int J Radiat Oncol Biol Phys* 2011 Jan 01;79(1):10-18 [FREE Full text] [doi: [10.1016/j.ijrobp.2009.10.058](https://doi.org/10.1016/j.ijrobp.2009.10.058)] [Medline: [20421148](https://pubmed.ncbi.nlm.nih.gov/20421148/)]
49. Van Dijk-Peters F, Sijsema N, Kierkels R, Vliegenthart R, Langendijk J, Maduro J, et al. OC-0259: Validation of a multi-atlas based auto-segmentation of the heart in breast cancer patients. *Radiotherapy and Oncology* 2015 Apr;115:S132-S133. [doi: [10.1016/S0167-8140\(15\)40257-9](https://doi.org/10.1016/S0167-8140(15)40257-9)]
50. Erven K, Weltens C, Nackaerts K, Fieuws S, Decramer M, Lievens Y. Changes in pulmonary function up to 10 years after locoregional breast irradiation. *Int J Radiat Oncol Biol Phys* 2012 Feb 01;82(2):701-707. [doi: [10.1016/j.ijrobp.2010.12.058](https://doi.org/10.1016/j.ijrobp.2010.12.058)] [Medline: [21398052](https://pubmed.ncbi.nlm.nih.gov/21398052/)]
51. Lo Q, Hee L, Batumalai V, Allman C, MacDonald P, Delaney GP, et al. Subclinical cardiac dysfunction detected by strain imaging during breast irradiation with persistent changes 6 weeks after treatment. *Int J Radiat Oncol Biol Phys* 2015 Jun 01;92(2):268-276. [doi: [10.1016/j.ijrobp.2014.11.016](https://doi.org/10.1016/j.ijrobp.2014.11.016)] [Medline: [25968824](https://pubmed.ncbi.nlm.nih.gov/25968824/)]
52. Dalen H, Thorstensen A, Aase SA, Ingul CB, Torp H, Vatten LJ, et al. Segmental and global longitudinal strain and strain rate based on echocardiography of 1266 healthy individuals: the HUNT study in Norway. *Eur J Echocardiogr* 2010 Mar;11(2):176-183. [doi: [10.1093/ejehocard/jep194](https://doi.org/10.1093/ejehocard/jep194)] [Medline: [19946115](https://pubmed.ncbi.nlm.nih.gov/19946115/)]
53. Moignier A, Broggio D, Derreumaux S, Beaudré A, Girinsky T, Paul J, et al. Coronary stenosis risk analysis following Hodgkin lymphoma radiotherapy: A study based on patient specific artery segments dose calculation. *Radiother Oncol* 2015 Dec;117(3):467-472. [doi: [10.1016/j.radonc.2015.07.043](https://doi.org/10.1016/j.radonc.2015.07.043)] [Medline: [26277431](https://pubmed.ncbi.nlm.nih.gov/26277431/)]
54. Taylor C, Darby SC. Ischemic heart disease and breast cancer radiotherapy: the way forward. *JAMA Intern Med* 2014 Jan;174(1):160-161. [doi: [10.1001/jamainternmed.2013.9131](https://doi.org/10.1001/jamainternmed.2013.9131)] [Medline: [24166032](https://pubmed.ncbi.nlm.nih.gov/24166032/)]
55. Lenihan DJ, Cardinale DM. Late cardiac effects of cancer treatment. *J Clin Oncol* 2012 Oct 20;30(30):3657-3664. [doi: [10.1200/JCO.2012.45.2938](https://doi.org/10.1200/JCO.2012.45.2938)] [Medline: [23008297](https://pubmed.ncbi.nlm.nih.gov/23008297/)]

Abbreviations

- BC:** breast cancer
- BLOOD:** blood sample for circulating biomarkers
- CAC:** coronary artery calcium
- CAD:** coronary artery disease
- CT:** computed tomography
- CTCA:** computed tomography coronary angiography
- ECHO-ST:** two-dimensional speckle-tracking echocardiography
- EV:** extracellular vesicle
- miRNAs:** microRNAs
- MRI:** magnetic resonance imaging
- NTCP:** Normal Tissue Complication Probability
- RT:** radiotherapy
- UMCG:** University Medical Center Groningen

Edited by G Eysenbach; submitted 22.01.18; peer-reviewed by J Thariat, X Cheng; comments to author 22.02.18; revised version received 30.03.18; accepted 17.04.18; published 01.10.18

Please cite as:

Walker V, Crijns A, Langendijk J, Spoor D, Vliegenthart R, Combs SE, Mayinger M, Eraso A, Guedea F, Fiuza M, Constantino S, Tamarat R, Laurier D, Ferrières J, Mousseaux E, Cardis E, Jacob S

Early Detection of Cardiovascular Changes After Radiotherapy for Breast Cancer: Protocol for a European Multicenter Prospective Cohort Study (MEDIRAD EARLY HEART Study)

JMIR Res Protoc 2018;7(10):e178

URL: <https://www.researchprotocols.org/2018/10/e178/>

doi: [10.2196/resprot.9906](https://doi.org/10.2196/resprot.9906)

PMID: [30274965](https://pubmed.ncbi.nlm.nih.gov/30274965/)

©Valentin Walker, Anne Crijns, Johannes Langendijk, Daan Spoor, Rozemarijn Vliegenthart, Stephanie E Combs, Michael Mayinger, Arantxa Eraso, Ferran Guedea, Manuela Fiuza, Susana Constantino, Radia Tamarat, Dominique Laurier, Jean Ferrières, Elie Mousseaux, Elisabeth Cardis, Sophie Jacob. Originally published in JMIR Research Protocols (<http://www.researchprotocols.org>), 01.10.2018. This is an open-access article distributed under the terms of the Creative Commons Attribution License (<https://creativecommons.org/licenses/by/4.0/>), which permits unrestricted use, distribution, and reproduction

in any medium, provided the original work, first published in JMIR Research Protocols, is properly cited. The complete bibliographic information, a link to the original publication on <http://www.researchprotocols.org>, as well as this copyright and license information must be included.