



HAL
open science

Aqueous Fraction from Hibiscus sabdariffa Relaxes Mesenteric Arteries of Normotensive and Hypertensive Rats through Calcium Current Reduction and Possibly Potassium Channels Modulation

Anas M A Alsayed, Bei Li Zhang, Pierre Bredeloux, Leslie Boudesocque-Delaye, Angèle Yu, Nicolas Peineau, Cécile Enguehard-Gueiffier, Elhadi M Ahmed, Côme Pasqualin, Véronique Maupoil

► To cite this version:

Anas M A Alsayed, Bei Li Zhang, Pierre Bredeloux, Leslie Boudesocque-Delaye, Angèle Yu, et al.. Aqueous Fraction from Hibiscus sabdariffa Relaxes Mesenteric Arteries of Normotensive and Hypertensive Rats through Calcium Current Reduction and Possibly Potassium Channels Modulation. *Nutrients*, 2020, 12 (6), pp.E-1782. 10.3390/nu12061782 . hal-02881241

HAL Id: hal-02881241

<https://hal.science/hal-02881241v1>


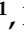



Submitted on 29 Aug 2024

HAL is a multi-disciplinary open access archive for the deposit and dissemination of scientific research documents, whether they are published or not. The documents may come from teaching and research institutions in France or abroad, or from public or private research centers.

L'archive ouverte pluridisciplinaire **HAL**, est destinée au dépôt et à la diffusion de documents scientifiques de niveau recherche, publiés ou non, émanant des établissements d'enseignement et de recherche français ou étrangers, des laboratoires publics ou privés.

Article

Aqueous Fraction from *Hibiscus sabdariffa* Relaxes Mesenteric Arteries of Normotensive and Hypertensive Rats through Calcium Current Reduction and Possibly Potassium Channels Modulation

Anas M.A. Alsayed ^{1,2,*}, Bei Li Zhang ¹, Pierre Bredeloux ¹, Leslie Boudesocque-Delaye ³, Angèle Yu ¹, Nicolas Peineau ¹, Cécile Enguehard-Gueiffier ³, Elhadi M. Ahmed ², Côme Pasqualin ¹ and Véronique Maupoil ¹

¹ EA 7349, Laboratoire Signalisation et Transports Ioniques Membranaires; Groupe Physiologie des Cellules Cardiaques et Vasculaires, Faculté de Pharmacie, Université de Tours, 31 Avenue Monge, 37200 Tours, France; bei-li.zhang@univ-tours.fr (B.L.Z.); pierre.bredeloux@univ-tours.fr (P.B.); angele.yu@univ-tours.fr (A.Y.); nicolas.peineau@univ-tours.fr (N.P.); come.pasqualin@univ-tours.fr (C.P.); veronique.maupoil@univ-tours.fr (V.M.)

² Department of Pharmacology, Faculty of Pharmacy, University of Gezira, Sudan. P.O. Box 20, 21111 Wad Medani, Sudan; yahadi54@yahoo.com

³ EA 7502 SIMBA—Laboratoire Synthèse et Isolement de Molécules BioActives, Université de Tours, Faculté de Pharmacie, 31 Avenue Monge, 37200 Tours, France; leslie.boudesocque@univ-tours.fr (L.B.-D.); cecile.inguehard-gueiffier@univ-tours.fr (C.E.-G.)

* Correspondence: anasmuh29@gmail.com or anas.alsayed@etu.univ-tours.fr

Received: 7 May 2020; Accepted: 11 June 2020; Published: 15 June 2020



Abstract: Background/Objectives: *Hibiscus sabdariffa* L. (*H. sabdariffa* (HS)) extract has a vascular relaxant effect on isolated rat thoracic aorta, but data on small resistance arteries, which play an important role on the development of hypertension, are still missing. The purposes of this study were (1) to assess the effect on isolated mesenteric arteries (MA) from normotensive (Wistar and Wistar-Kyoto (WKY)) and spontaneous hypertensive rats (SHR); (2) to elucidate the mechanism(s) of action underlying the relaxant effect in light of bioactive components. Methods: Vascular effects of HS aqueous fraction (AF) on isolated MA rings, as well as its mechanisms of action, were assessed using the contractility and intracellular microelectrode technique. The patch clamp technique was used to evaluate the effect of HS AF on the L-type calcium current. Extraction and enrichment of AF were carried out using liquid–liquid extraction, and the yield was analyzed using HPLC. Results: The HS AF induced a concentration-dependent relaxant effect on MA rings of SHR ($EC_{50} = 0.83 \pm 0.08$ mg/mL), WKY ($EC_{50} = 0.46 \pm 0.04$ mg/mL), and Wistar rats ($EC_{50} = 0.44 \pm 0.08$ mg/mL) pre-contracted with phenylephrine (10 μ M). In Wistar rats, the HS AF maximum relaxant effect was not modified after endothelium removal or when a guanylate cyclase inhibitor (ODQ, 10 μ M) and a selective β_2 -adrenergic receptor antagonist (ICI-118551, 1 μ M) were incubated with the preparation. Otherwise, it was reduced by $34.57 \pm 10.66\%$ when vascular rings were pre-contracted with an 80 mM [K⁺] solution ($p < 0.001$), which suggests an effect on ionic channels. HS AF 2 mg/mL significantly decreased the peak of the L-type calcium current observed in cardiac myocytes by 24.4%. Moreover, though the vasorelaxant effect of HS, AF was reduced by 27% when the nonselective potassium channels blocker (tetraethylammonium (TEA) 20 mM) was added to the bath ($p < 0.01$). The extract did not induce a membrane hyperpolarization of smooth muscle cells, which might suggest an absence of a direct effect on background potassium current. Conclusion: These results highlight that the antihypertensive effect of HS probably involves a vasorelaxant effect on small resistance arteries, which is endothelium independent. L-type calcium current reduction contributes to this effect. The results could also provide a link between the vasorelaxant effect and the bioactive compounds, especially anthocyanins.

Keywords: *Hibiscus sabdariffa*; hypertension; mesenteric artery; vasorelaxation; anthocyanins; Ca²⁺ current

1. Introduction

Hibiscus sabdariffa L. (*H. sabdariffa* L.) calyx has been used in many countries throughout the world as hot or cold beverages and for health purposes, especially for traditional treatment of high blood pressure [1–3].

Several clinical studies on *H. sabdariffa* have been carried out and have shown that the consumption of *H. sabdariffa* significantly lowers arterial blood pressure [4–9]. A number of in vivo pharmacological studies in experimental animals have also shown blood pressure lowering activity of *H. sabdariffa* [10–12]. Furthermore, *ex-vivo* pharmacological studies have documented that *H. sabdariffa* calyces extracts produce by vasorelaxation of the aorta and are either pre-contracted by noradrenaline, phenylephrine (PE), or depolarization with high potassium concentration [13–16]. Moreover, studies also showed that *H. sabdariffa* relaxes other smooth muscles, including the intestine, uterus, and bladder [17–20].

Several hypotheses have been suggested to explain the mechanism(s) involved in the reduction of arterial blood pressure, such as angiotensin-converting enzyme inhibition, the diuretic effect, or the direct vasorelaxant effect [21], but none have been clearly established. In some studies, it has been suggested that the relaxation is either endothelium dependent and/or endothelium independent due to inhibition of Ca²⁺ influx or activation of K⁺ channels [14,16,22], but no electrophysiological study has been performed to bring direct evidence.

Moreover, most of the vasorelaxant effect studies have been performed on a model of rat aorta, which is a capacitance artery poorly involved in the regulation of arterial blood pressure [23]. Therefore, experiments on resistance arteries that play an important role on the development of hypertension are still missing.

The active components that are responsible for the antihypertensive activity are not fully documented. However, anthocyanins are generally believed to be responsible for this action because they are found in high quantities in aqueous extracts [24–26].

Because of the folk medicine use of *H. sabdariffa* as a beverage, the main objectives of the study were (1) to investigate the effect of the aqueous fraction (AF) of *H. sabdariffa* on a model of resistance arteries (the mesenteric arteries from both hypertensive and normotensive rats). The spontaneously hypertensive rats (SHR) are commonly used as a model of human essential hypertension [27]. (2) to identify the mechanism(s) of action of *H. sabdariffa* AF in light of the phytochemical compound(s), especially anthocyanins.

2. Materials and Methods

2.1. Plant Materials

Hibiscus sabdariffa black-red dried calyces (*Malvaceae*), commonly known as Karkade, Roselle (Red Sorrel), or hibiscus, were procured from Gezira (Sudan) (Figure 1). The plant material was identified taxonomically by the Department of Pharmacognosy—University of Gezira number Hs-C/01. Botanical classification was checked with The Plant List (<http://www.theplantlist.org>) to get information on the folk medicinal use of the plant (accessed in July 2019).



Figure 1. Herbarium photography of *Hibiscus sabdariffa*.

2.2. *H. Sabdariffa* Extraction and Fractionation

For extraction, 500 g of coarse powdered crude dried calyces were macerated in 70% methanol in water (1:10, *w/v*) for 72 h at room temperature with occasional shaking and filtering. The filtrate was evaporated under vacuum to dryness (40 °C) and then freeze dried. For enrichment, 150 g of crude extract was dissolved in 20% ethanol in water (1:20 *w/v*), portioned with n-hexane (500 mL × 3) by liquid-liquid extraction using a separating funnel, followed successively and similarly by dichloromethane and ethyl acetate [16,25,28]. The remaining soluble fraction was used as an aqueous fraction, then, after filtration, the extract was concentrated under vacuum and freeze-dried. The AF was stored at −20 °C until further experiments.

2.3. HPLC Analysis

With the aim of confirming the chemical composition of the aqueous fraction, we proceeded to an HPLC analysis. The analysis was performed on a Dionex UHPLC U3000RS system equipped with a LPG-3400RS quaternary pump, a RSLC WPS-300T RS automated injector, a TCC-300SD column oven, and a UHPLC+ DAD-3000 diode array detector (ThermoFisher SA, Voisins le Bretonneux, France). The system was fitted with an Accucore aQ C18 (15 cm × 3 mm i.d., 2.6 µm particle size) column, itself protected by a Securiguard (ThermoFisher). The mobile phases were solvent A 0.1% trifluoroacetic acid (TFA) in water and solvent B acetonitrile. The gradient was set as follows: The initial acetonitrile content was 0%, it was raised to 10% in 5.24 min, 15% in 0.32 min, 20% in 0.31 min, and 100% in 0.32 min and was maintained for 4 min. Flow rate was set at 0.8 mL/min, column temperature was set at 40 °C, and injection volume was 8 µL. A HPLC chromatogram from *Hibiscus sabdariffa* AF was recorded at 280 and 520 nm [29].

2.4. Animals

Experiments were performed on male Wistar, Wistar Kyoto (WKY), and spontaneously hypertensive rats (SHR) of about 16 weeks old, weighing between 390 to 515 g (CER Janvier, Le Genest, St Isle, France). All experiments involving animals were approved by the institutional ethical committee (Comité d'éthique en expérimentation animal Val de Loire, Tours, France, Permit number: 2016090711251954) and carried out in accordance with European guidelines on animal experimentation and the French "Ministère de l'Enseignement supérieur, de la Recherche et de l'Innovation". All applicable international and/or institutional guidelines for the care and use of animals were followed. The blood pressure (BP) and heart rate (HR) of WKY rats and SHR were measured by use of the tail-cuff method [30].

2.5. Contractility Experiments on an Isolated Mesenteric Artery

All rats were anesthetized by intraperitoneal injection of pentobarbital (60 mg/kg). After intravenous injection of heparin (500 IU/kg), the mesenteric arterial bed was rapidly removed and placed into a dissecting dish that contained Krebs–Henseleit solution composed of (in mM) 119 NaCl, 25 NaHCO₃, 4.7 KCl, 1.18 KH₂PO₄, 1.17 MgSO₄, 1.36 CaCl₂, and 5.5 glucose. All visible connective tissues were cleaned, and the second-order mesenteric arteries were cut into 1.5–2 mm ring segments and individually mounted in a Mulvany–Halpern myograph (Multi Myograph system 610 M, JP Trading, Aarhus, Denmark) for measurement of isometric tension. Vessels were perfused with a Krebs–Henseleit solution at a flow rate of 1 mL/min, maintained at 37 °C, and gassed with 5% CO₂/95% O₂. Data (mN/mm) were recorded with a PowerLab interface and Chart software (ADInstruments, Castle Hill, NSW, Australia). After a 30 min equilibration period in the Krebs–Henseleit solution, vessels were stretched (up to 3.5 mN) in a stepwise manner [31]. The rings were pre-contracted either with PE (10 μM) or high K⁺ solution (in mM, 39 NaCl, 25 NaHCO₃, 80 KCl, 1.18 KH₂PO₄, 1.17 MgSO₄, 1.36 CaCl₂, and 5.5 glucose). Once the contractions reached the steady state, *H. sabdariffa* AF was perfused and the effect was recorded. In cumulative concentration-response curves, the vasoconstrictor responses were expressed as absolute contractions in mN/mm relative to basal tone. Relaxations were expressed as the percentage of the initial pre-contraction. Figures and curves, including EC₅₀, were obtained from individual concentration-response curves. Confirmation of the presence of endothelium was demonstrated by a >30% relaxation in response to ACh (10 μM), when the mesenteric artery was pre-contracted with PE (10 μM). All the experiments were performed in the presence of endothelium, unless indicated. Otherwise, the endothelium was denuded by gently rubbing the luminal surface of the mesenteric artery rings.

In a separate set of experiments, the mechanism(s) of the vasorelaxant effect of *H. sabdariffa* AF were studied on mesenteric arteries isolated from Wistar rats using pre-incubation (20 min) and/or the presence of either a soluble guanylyl cyclase inhibitor (1*H*-[1,2,4]oxadiazolo [4,3-*a*]quinoxalin-1-one (ODQ) 10 μM), selective β₂-adrenergic receptor (adrenoreceptor) antagonist, (ICI-118551 (1 μM)), stable thromboxane A₂ receptor agonist (U46619 (3 μM)), or a non-selective K⁺ channel blocker (tetraethylammonium chloride (TEA; 20 mM)). The rings were pre-contracted either with PE (10 μM) or U46619 (3 μM).

The controls were carried out for each experiment, either in the presence or absence of the agonist and/or the antagonist. At least three rats were used for each group of experiments. For all of these experiments, the pH of the physiological solution containing the extract was adjusted with NaOH up to 7.4.

2.6. Ventricular Cardiomyocytes Isolation

Cardiomyocytes isolation was proceeded, as mentioned previously [32]. Briefly, the heart and lungs were removed as one block from the anesthetized and heparinized rats and dissected in a cold (4 °C) cardioplegic solution bath (in mM: 110 NaCl, 16 KCl, 1.20 CaCl₂, 16 MgCl₂, 10 NaHCO₃, and 10 glucose). Isolation was performed using a Langendorff system with 0.17 U/mL liberase™ in KRB (in mM: 35 NaCl, 4.75 KCl, 1.19 KH₂PO₄, 16 Na₂HPO₄, 25 NaHCO₃, 134 sucrose, 10 HEPES, and 10 glucose, pH adjusted to 7.4) under 95% O₂/5% CO₂ until the heart changed in shape and color (white areas appeared). After enzymatic digestion, the heart was recovered in a KB solution (in mM: 50 glutamic acid, 30 KCl, 30 KH₂PO₄, MgSO₄, 7H₂O, 20 taurine, 0.5 EGTA, 10 HEPES, 10 Glucose, 10 KOH, pH = 7.4). The ventricles were then separated and cut up into fine pieces for mechanical digestion, then the KB solution was replaced by Tyrode's solution (in mM: 140 NaCl, 5.37 KCl, 1.36 CaCl₂, 1 MgCl₂, 0.33 NaH₂PO₄, 10 HEPES, and 11 glucose; pH adjusted to 7.4) and stored at room temperature until use.

2.7. Whole Cell Patch-Clamp Experiments

The L-type calcium current (I_{CaL}) was recorded from ventricular cardiomyocytes (VCMs) plated onto glass coverslips and maintained at room temperature (22–25 °C). During the patch clamp experiments, the cells were locally superfused by gravity (small capillaries positioned within 30 μ m of the cell and allowing fast solution changes) with a solution containing (in mM): 144 TEACl, 2 CaCl₂, 1 MgCl₂, 5 4-aminopyridine, 10 HEPES buffer, and 11 glucose (pH 7.4 with TEAOH). The recording pipettes were pulled from borosilicate glass capillaries (Clark Electromedical Instruments) to a tip resistance of 2–4 M Ω . The pipette solution contained (in mM): 10 TEA-Cl, 2 MgCl₂, 115 DL-aspartic acid, 5 di-*tris* phosphocreatine, 10 HEPES buffer, 10 EGTA, and 5 Mg-ATP (pH 7.25 with CsOH). These solutions were used to block ionic currents other than I_{CaL} : K⁺ currents (TEA-Cl, CsCl, 4-aminopyridine, Na⁺ currents (Na⁺-free solutions), and Ca²⁺-activated currents (EGTA). An Axopatch 200 A amplifier connected to a PC computer, running Clampex (pClamp 9 software, Axon Instruments) through a Digidata 1200 A interface, was used to control voltage and record currents from a holding potential (HP) of –70 mV. Data were acquired at a sampling frequency of 10 kHz and low-pass filtered with an 8-pole lowpass Bessel filter at 2 kHz. Membrane capacitance (C_m) was measured by integration of the capacitive currents in response to a series of 10 hyperpolarizing pulses applied from the HP (amplitude and duration: 10 mV, 10 ms) and then averaged. The pipette and cell capacitances were compensated by 80% [32]. Maximum Ca²⁺ conductance (g_{max}) and apparent reversal potential (V_{rev}) were obtained from current-voltage curve (IV curve) fitting with the dedicated function:

$$I = \frac{(V - V_{rev}) \times g_{max}}{1 + e^{V - V_{half}/\Delta V}} \quad (1)$$

where V_{half} corresponds to the voltage at 50% of g_{max} .

2.8. Microelectrode Experiments for the Measurement of Membrane Potential

The experiments were carried out as mentioned previously, with some modifications [33]. Mesenteric artery ring segments were taken from normotensive Wistar rats and individually mounted in a Mulvany–Halpern myograph. The myograph chamber was perfused using the Krebs–Henseleit solution at a flow rate of 5.4 mL/min, gassed with 95% O₂/5% CO₂ and maintained at 34 \pm 0.1 °C. Resting membrane potentials were recorded with glass capillary microelectrodes, filled with 3 M KCl (30–50 M Ω), connected to a VF 180 microelectrode amplifier (Biologic). Voltage was recorded through a PowerLab interface and Chart software (ADInstruments, Castle Hill, NSW, Australia). Responses to *H. sabdariffa* AF were determined using a single dose (2 mg/mL), perfused for 20 min.

2.9. Data and Statistical Analysis

Analysis and presentation of data were performed by using Clampfit 10 and Origin 7 (Microcal Software, Northampton, MA, USA). Data were expressed as mean \pm standard error of the mean (SEM) of results obtained from n different preparations. Statistical evaluation was performed with a Student's *t*-test or a Mann–Whitney test. Differences were considered significant when *p*-values were less than or equal to 0.05.

2.10. Chemicals

Chemicals were obtained from either Merck KG (Darmstadt, Germany) or Sigma–Aldrich (Saint Quentin Fallavier, France), unless otherwise indicated. Solvents of extraction were from Carlo Erba (Val de Reuil, France). U46619 was from Cayman Chemical (Bertin Pharma, Montigny Le Bretonneux, France).

3. Results

3.1. Preparation of *H. Sabdariffa* AF and Characterization

The AF of *H. sabdariffa* (HS) was obtained using the classical extraction protocol [16,25,28]. The extraction yield of crude extract was 44.7%, and the resulting aqueous fraction represented 82% yield of the methanolic crude extract. HPLC analysis of *H. sabdariffa* AF showed the presence of two major peaks of anthocyanins at 520 nm, which is the commonly used wavelength for anthocyanin analysis [34]. At 280 nm HS, AF showed small peaks that represent the presence of a small amount of other phenolic/polyphenolic compounds. Therefore, aqueous fraction showed selectivity towards anthocyanins (Figure 2).

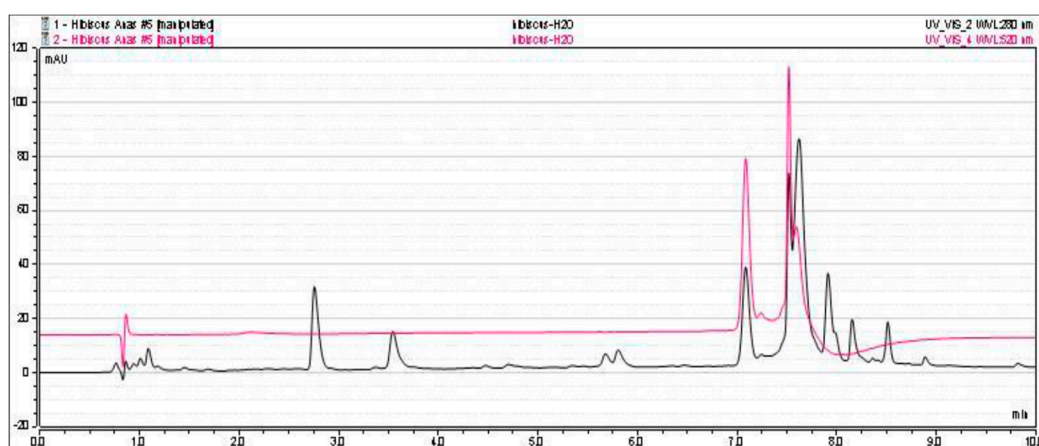


Figure 2. HPLC chromatogram from *H. sabdariffa* (HS) aqueous fraction (AF), recorded at 280 nm (black) and 520 nm (red).

3.2. Effects of *H. sabdariffa* AF on Rat Mesenteric Artery Ring

In order to investigate the vasorelaxant activity of *H. sabdariffa* AF, mesenteric artery rings were isolated from male normotensive WKY and spontaneous hypertensive rats (SHR). The records of systolic BP, diastolic BP, and HR were significantly different between these two types of rats, and they were 195 ± 5.4 , 151 ± 4.9 mmHg, and 347 ± 10.8 beats/min in SHR ($n = 7$), while they were 150 ± 4 , 105 ± 7.4 mmHg, and 283 ± 4.5 beats/min in WKY rats ($n = 6$), respectively ($p < 0.05$). Cumulative perfusion of different concentrations of *H. sabdariffa* AF (0.05–10 mg/mL) produced concentration-dependent relaxation of mesenteric artery rings isolated from both WKY rats ($E_{max} = 98 \pm 2\%$ at HS AF 5 mg/mL) and SHR ($E_{max} = 90 \pm 3.7\%$ at HS AF 10 mg/mL), pre-contracted by PE (10 μ M). The effect of *H. sabdariffa* was not significantly different between SHR ($EC_{50} = 0.83 \pm 0.08$ mg/mL, $n = 8/4$) and WKY rats ($EC_{50} = 0.46 \pm 0.04$ mg/mL, $n = 9/5$) ($p = 0.63$) (Figure 3). In normotensive Wistar rat isolated mesenteric artery rings, *H. sabdariffa* AF (0.05–5 mg/mL) caused a concentration-dependent relaxation ($E_{max} = 98 \pm 2\%$, $EC_{50} = 0.44 \pm 0.08$ mg/mL, $n = 9/5$, $p = 0.09$) that was not significantly different from that observed in WKY rats (Figure 3). Thus, these findings confirmed the vasorelaxant effect on mesenteric artery rings isolated from both normotensive and hypertensive rats.

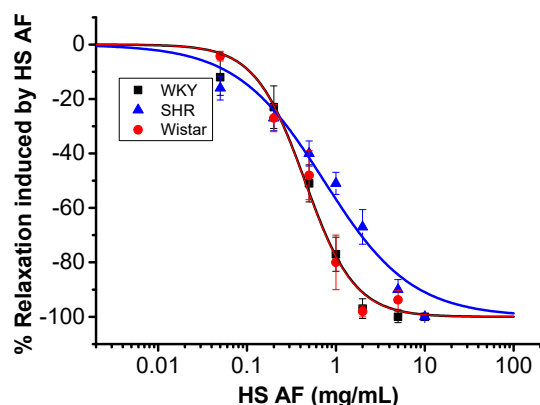


Figure 3. Concentration effect curve of HS AF on isolated mesenteric arteries (MA) rings of Wistar rat MA and WKY and SHR pre-contracted by 10 μ M PE. Values are expressed as mean \pm SEM (n = 9/5 for WKY, n = 8/4 for SHR, and n = 9/5 for Wistar). Relaxation was calculated as a percentage of the initial contraction.

3.3. Role of Endothelium and nitric oxide (NO) Pathway

The influence of the endothelium on the relaxant response of *H. sabdariffa* AF (2 mg/mL) was examined on Wistar rat isolated mesenteric artery rings pre-contracted by PE (10 μ M). The endothelium intact rings showed vasorelaxation of $98 \pm 2\%$ (n = 8/4) and it was $93 \pm 2\%$ (n = 9/5) in endothelium denuded preparations. The maximum relaxant effect was not significantly decreased after endothelium removal of endothelium ($p = 0.28$) (Figure 4A). It suggests that endothelium is not involved in the vasorelaxant effect of AF on mesenteric artery rings.

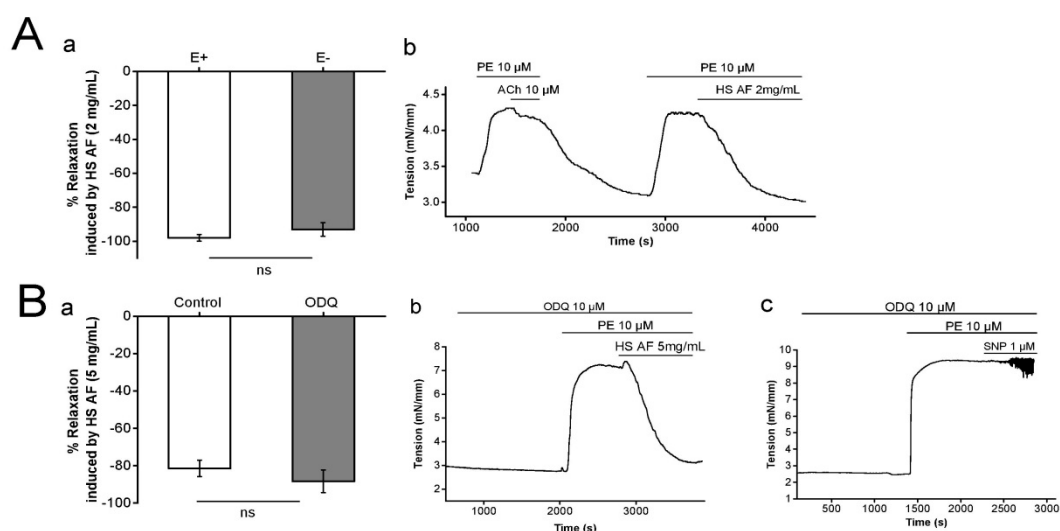


Figure 4. (Aa) Relaxant effect of 2 mg/mL HS AF on isolated Wistar rat MA ring pre-contracted by 10 μ M PE in endothelium-intact (E+) and endothelium denuded (E-) rings. (Ab) Representative experimental trace of HS AF effect compared to 10 μ M ACh-induced relaxation. Values are expressed as mean \pm SEM (n = 8/4 for intact rings and n = 9/5 for denuded rings). (Ba) Effect of 5 mg/mL HS AF on isolated Wistar rat MA rings pre-contracted by 10 μ M phenylephrine (PE) in presence and absence of 10 μ M ODQ. (Bb) Representative experimental trace. MA rings were perfused with ODQ for 20 min before pre-contraction. (Bc) Control experiment by use of sodium nitroprusside (SNP) 1 μ M. Values are expressed as mean \pm SEM (n = 13/7 for control (PE + HS AF), n = 8/4 for 10 μ M ODQ + (PE + HS AF)). Relaxation was calculated as a percentage of the initial contraction. Not statistically significant (ns).

Similarly, the possibility of nitric oxide (NO) donation by *H. sabdariffa* AF was tested by perfusion of ODQ, which is a selective, irreversible inhibitor of soluble guanylyl cyclase [35]. Our results showed

that the vasorelaxant effect of *H. sabdariffa* AF was not affected by either the presence ($88.4 \pm 6.1\%$, $n = 8/4$) or absence ($81.4 \pm 4.4\%$, $n = 13/7$) of ODQ $10 \mu\text{M}$ ($p = 0.38$) (Figure 4Ba,b). In the control experiment, ODQ successfully blocked the effect of the NO donor sodium nitroprusside (SNP) $1 \mu\text{M}$ (Figure 4Bc), as expected. Hence, these results suggest that the vasorelaxation induced by *H. sabdariffa* AF was not due to NO donation. Therefore, the endothelium-independent effect of *H. sabdariffa* AF led us to study the probability of adrenergic pathway involvement.

3.4. Involvement of Adrenergic Pathway

In order to investigate the hypothesis that the extract has an α_1 -adrenergic receptor antagonist effect, *H. sabdariffa* AF (5 mg/mL) was tested on mesenteric artery rings pre-contracted by U46619 ($3 \mu\text{M}$), an agonist of the thromboxane A2 receptor, which is an another Gq pathway coupled receptor. As shown in Figure 5A, the vasorelaxant effect of *H. sabdariffa* AF was not significantly different when the artery was pre-contracted by $3 \mu\text{M}$ U46619 ($90.6 \pm 4.8\%$, $n = 8/4$) or by $10 \mu\text{M}$ PE ($94 \pm 3.5\%$, $n = 7/4$), $p = 0.3$ vs. PE pre-contraction.

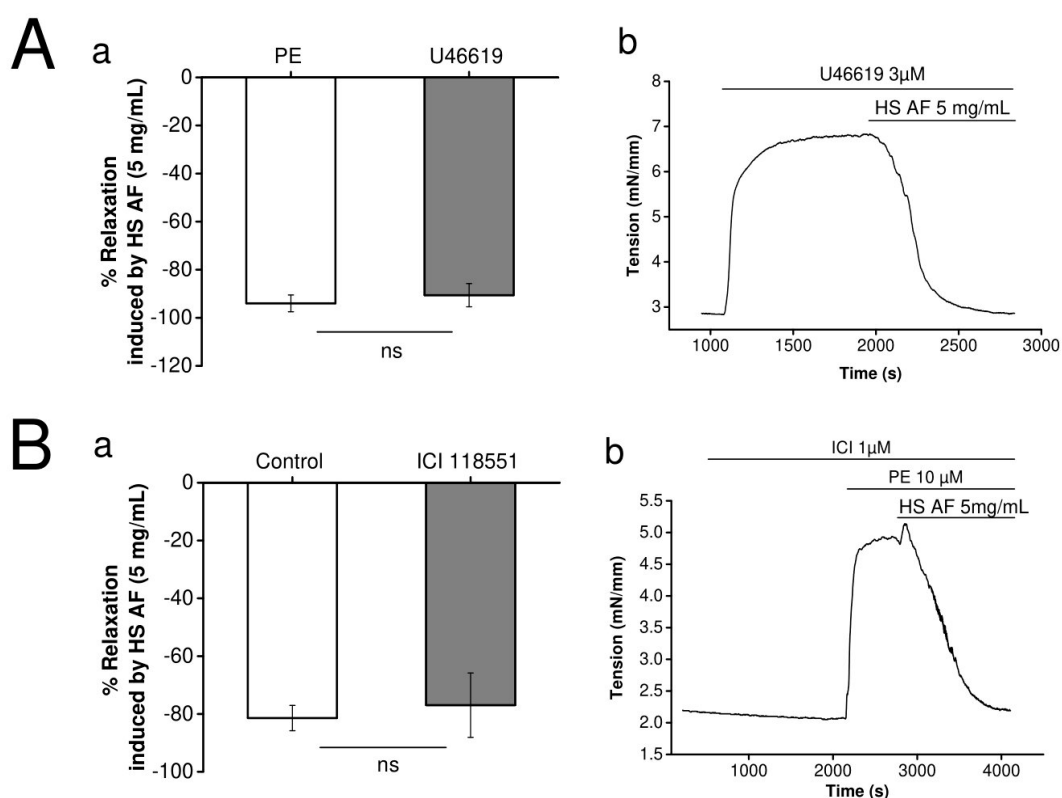


Figure 5. (Aa) Effect of 5 mg/mL HS AF on isolated Wistar rat MA rings in response to pre-contraction by $3 \mu\text{M}$ U46619 compared to the control. (Ab) Representative experiment trace. Values are expressed as mean \pm SEM ($n = 7/4$ for control (PE + HS AF) and $n = 8/4$ for $3 \mu\text{M}$ U46619 + HS AF+). (Ba) Effect of 5 mg/mL HS AF with and without administration of $1 \mu\text{M}$ ICI 118,551 on isolated Wistar rat MA rings pre-contracted by $10 \mu\text{M}$ PE. MA rings were perfused using ICI 118,551 for 20 min before pre-contraction. (Bb) Representative experimental trace. Values are expressed as mean \pm SEM ($n = 13/7$ for control (PE + HS AF), $n = 8/4$ for $1 \mu\text{M}$ ICI 118551 + (PE + HS AF)). Relaxation was calculated as a percentage of the initial contraction. Not statistically significant (ns).

Furthermore, we tested the hypothesis of the β_2 -adrenergic receptor agonism of *H. sabdariffa* AF on mesenteric artery rings pre-contracted by PE ($10 \mu\text{M}$). As presented in Figure 5B, perfusion of a selective β_2 -adrenergic receptor antagonist, ICI-118551 ($1 \mu\text{M}$), did not significantly ($p = 0.4$) attenuate the vasorelaxant response. It was $77.0 \pm 11.1\%$ ($n = 8/4$) and $81.4 \pm 4.4\%$ ($n = 13/7$) in presence and absence of ICI-118551, respectively.

These results indicate that neither α_1 - nor β_2 -adrenergic receptors were involved in the vasorelaxant effect of *H. sabdariffa* AF. Therefore, we decided to investigate its direct effect on ionic currents.

3.5. Effect of *H. sabdariffa* AF on Ionic Currents

Wistar rat isolated mesenteric artery rings were pre-contracted with either PE (10 μ M) or high K^+ solution, and the relaxant effects of *H. sabdariffa* AF at a concentration of 2 mg/mL were recorded for both experiments. The contraction induced by high K^+ concentration is mainly due to an entry of calcium from extracellular space through the L-type calcium channels, whereas contraction induced by PE is mostly caused by the release of calcium from intracellular stores [36]. The results showed that *H. sabdariffa* AF relaxed mesenteric artery rings by $34.6 \pm 10.7\%$ ($n = 12/6$) when vascular rings were pre-contracted with high K^+ solution, whereas the relaxation was $100 \pm 6.42\%$ ($n = 9/5$) when pre-contracted with PE ($p < 0.001$) (Figure 6A). The significant lower relaxant effect with high K^+ pre-contraction suggests that *H. sabdariffa* AF might induce a partial effect on calcium entry from extracellular space. Therefore, further experiments on the calcium current were carried out using an electrophysiological technique.

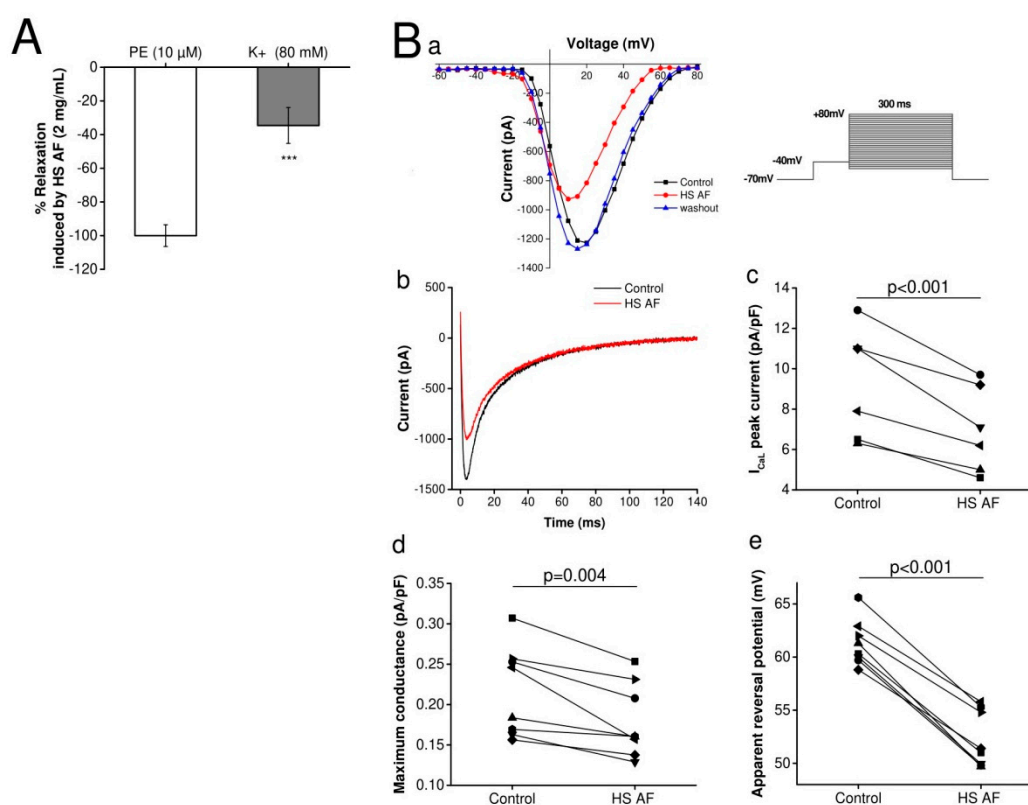


Figure 6. (A) Relaxant effect of 2 mg/mL HS AF on isolated Wistar rat MA rings pre-contracted by 10 μ M PE or high K^+ (80 mM) solution. Values are expressed as mean \pm SEM ($n = 9/5$ for PE and $n = 12/6$ for high K^+). Relaxation was calculated as a percentage of the initial contraction. *** $p < 0.001$ vs. 10 μ M PE. (B) Effect of 5 mg/mL HS AF on the calcium current on isolated ventricular cardiomyocytes by use of the whole-cell voltage-clamp technique ($n = 7/3$). (Ba) I_{CaL} current-voltage curve in absence (black), in the presence of HS AF (red) and after washout (blue) (Bb) Representative traces of the calcium current recorded at +15 mV membrane voltage. (Bc) Individual values of the maximum current recorded in the presence of HS AF and compared with control conditions. (Bd) I_{CaL} maximum conductance in the absence and presence of HS AF. (Be) I_{CaL} apparent reversal potential in the absence and presence of HS AF.

According to the vasorelaxant effect of *H. sabdariffa* AF on mesenteric artery rings and the hypothesis of some authors, interestingly, we tested the effect of *H. sabdariffa* AF on the L-type calcium

current using the whole-cell patch clamp technique on Wistar rat VCMs. The calcium current was activated by depolarizing voltage steps from -60 to $+80$ mV, with a prepulse at -40 mV (200 ms) to inactivate sodium current. The corresponding current voltage was obtained in a control condition, in the presence of *H. sabdariffa* AF, and after washout of *H. sabdariffa* AF to control the possible run-down of the calcium current [37]. *H. sabdariffa* AF induced a significant reduction of the calcium current (Figure 6Ba,b) of 24.4% ($n = 7/3$, $p < 0.001$) at the current peak (Figure 6Bc), and it was not due to I_{CaL} run-down, since the current fully recovered after washout of HS AF. The maximum conductance (g_{max}) was reduced by $16.52 \pm 0.03\%$ ($p = 0.004$) (Figure 6Bd). These indicate that *H. sabdariffa* AF was able to decrease the L-type calcium current. Additionally, the apparent reversal potential (V_{rev}) was shifted toward a lower voltage by 9.1 ± 0.6 mV ($p < 0.001$) (Figure 6Be), which suggests the increase of intracellular calcium concentration.

Moreover, the significant lower relaxant effect of HS when vessels were pre-contracted with high K^+ might also be explained by an effect on potassium channels. To establish whether the vasorelaxant effect of *H. sabdariffa* AF involves the activation of K^+ channels, its effect was examined in the presence of the non-selective K^+ channel blocker, tetraethylammonium chloride (TEA, 20 mM) on mesenteric arteries. using a Mulvany–Halpern myograph. The addition of TEA to the Krebs–Henseleit solution had no basal effect, but significantly decreased ($27 \pm 00\%$, $p < 0.01$) the vasorelaxation induced by *H. sabdariffa* AF, which could indicate that *H. sabdariffa* AF partially modulates the potassium channel (Figure 7).

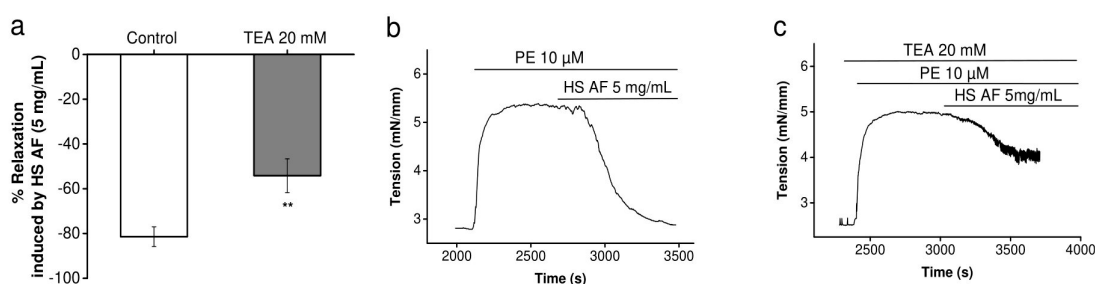


Figure 7. The effect of HS AF on potassium channels: (a) Effect of 5 mg/mL HS AF on isolated Wistar rat MA rings pre-contracted by 10 μ M PE in the presence of 20 mM tetraethylammonium (TEA). MA rings were perfused using TEA for 20 min before pre-contraction. (b) and (c) Representative experimental traces in the presence and absence of TEA. Relaxation was calculated as a percentage of the initial contraction. Values are expressed as mean \pm SEM ($n = 13/7$ for control (PE + HS AF) and $n = 8/4$ for TEA + (PE + HS AF)). ** $p < 0.01$ vs. control (PE + HS AF).

Thereafter, in control conditions without PE, the membrane potential of smooth muscle cells in mesenteric artery rings was recorded using intracellular microelectrode before and after the addition of 2 mg/mL *H. sabdariffa* AF. The extract had no clear hyperpolarizing effect on the membrane potential of smooth muscle cells, which suggests that *H. sabdariffa* AF does not directly activate the potassium current (Figure 8).

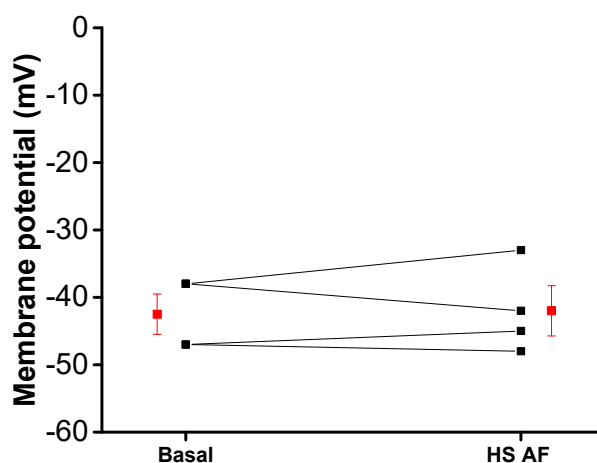


Figure 8. Effect of HS AF 2 mg/mL on the membrane potential of Wistar rat MA rings: individual (black) values and mean \pm SEM (red) (n = 4/4).

4. Discussion

The objectives of this work were to demonstrate the relaxant effect of *H. sabdariffa* AF on the isolated mesenteric artery rings from normotensive and hypertensive rats, as well as to investigate the possible mechanism(s) of action in light of bioactive components that it contains.

Most of the vasorelaxation studies of *H. sabdariffa* were performed on a model of rat aorta, which is an elastic artery poorly involved in the regulation of arterial blood pressure compared to small resistance arteries [38,39]. In this regard, the results of the present study showed that the *H. sabdariffa* AF relaxed, concentration-dependently, the small mesenteric artery rings pre-contracted with PE (10 μ M), whether they were isolated from normotensive or hypertensive rats. These findings are supported by the previous studies that demonstrated the action of *H. sabdariffa* extract [4–7,10–16,40,41].

In accordance with previous work that studied hibiscus acid, which is a water extract component of *H. sabdariffa*, on aorta [22], our results showed that there was no significant difference in relaxation achieved in either endothelium-intact or endothelium-denuded vessels. Therefore, the relaxation of mesenteric artery rings to *H. sabdariffa* AF seems to be endothelium-independent. This reinforces the hypothesis that a direct vasorelaxant effect is involved in the antihypertensive properties of *H. sabdariffa*. In contrast, previous studies using the crude hydro-alcoholic extract of *H. sabdariffa* found that the effect on aorta rings was reduced, but not lost, in the absence of endothelium [14,16], suggesting that there could be additional vasoactive components in the crude extract of *H. sabdariffa*.

Nevertheless, the present study suggests that the vasorelaxant effect of *H. sabdariffa* AF was neither due to an effect on the α_1 -adrenergic receptor, the β_2 -adrenergic receptor, nor activation of guanylyl cyclase. Therefore, the involvement of other mechanism(s) of action, particularly an action on ionic channels, was investigated.

The pre-contraction with α_1 -adrenoceptor agonist (PE) and the depolarization with high K^+ solution induces increases in smooth muscle tone by stimulating Ca^{2+} influx through voltage and receptor operated Ca^{2+} channels [36,42,43]. This might suggest that *H. sabdariffa* AF regulates these two Ca^{2+} entry pathways or, otherwise, its target is between Ca^{2+} and contractile proteins in the contraction signaling pathway. Previous studies suggested that the mechanism of action of *H. sabdariffa* might be associated with inhibition of Ca^{2+} influx through voltage-operated channels [14,15,40,44], but the direct effect of *H. sabdariffa* extract on the calcium current was not studied. For the first time, the whole-cell patch-clamp technique was used in this study to determine the effect of *H. sabdariffa* AF on the L-type calcium current. This experiment showed that *H. sabdariffa* AF partially decreases the L-type calcium current at a concentration, which induced the maximum vasorelaxant effect (Figure 9). However, this block is not great enough to explain the large vasorelaxant effect and probably contributes to only a part of this effect. Moreover, the reduction of the current is mainly due to the shift of the apparent

reversal potential, rather than the decrease of the maximum conductance of the channels. This might be explained by an indirect effect of *H. sabdariffa* AF on this current, probably through the increase of sub-membrane calcium concentration. This observation suggests a possible inhibitory effect of the extract on the Ca^{2+} -calmodulin complex [45].

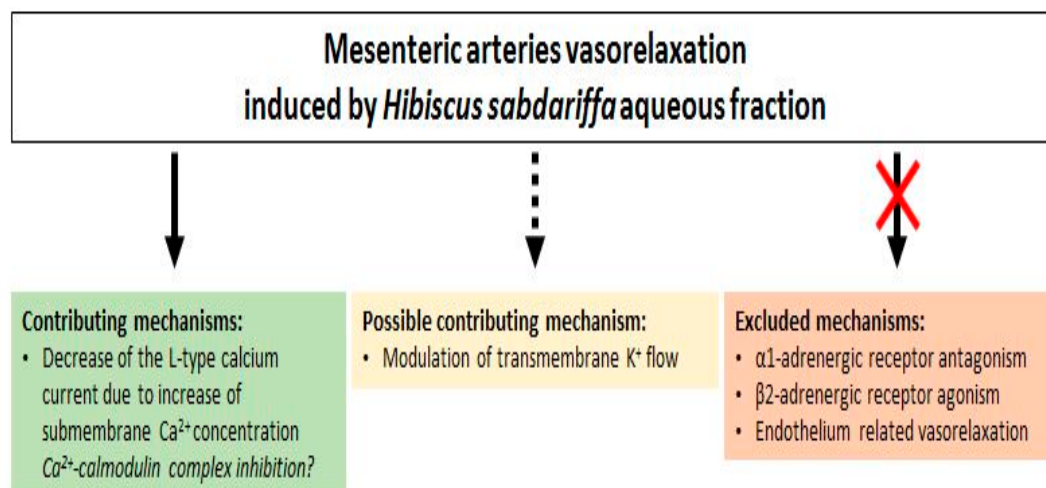


Figure 9. Diagrammatical representation of *H. sabdariffa* aqueous fraction mediated vasorelaxation in mesenteric arteries.

Activation of potassium channels has also been proposed for the induction of vasorelaxation by the *H. sabdariffa* crude extract [16]. The preventing effect of TEA (non-selective K^+ channels blocker) upon relaxation induced by our AF supports this hypothesis. Furthermore, the lower relaxant effect, when pre-contraction was induced by high concentration of external potassium compared to PE pre-contraction, could also support this mechanism; this is in agreement with that which was previously described in the aorta [14,40]. Indeed, the increase of extracellular potassium concentration reduces the driving force of K^+ efflux and, therefore, decreases the possible hyperpolarization-induced vasorelaxant effect [42]. However, this mechanism could not be a direct opening of potassium channels, because microelectrode experiments have shown that *H. sabdariffa* AF did not induce a membrane hyperpolarization that would be expected by the increased outward potassium current in the basal condition. Hence, the mechanism might be an increase in a potassium current, activated after the pre-contraction (Figure 9).

The main bioactive constituents of *H. sabdariffa* relevant in the context of its pharmacological effects are polysaccharides, organic acids, and flavonoids, especially anthocyanins [46]. Generally, many flavonoids exhibit antihypertensive effects by targeting cardiovascular ionic channels, especially inhibition of calcium channels, activation of potassium channels, and/or Ca^{2+} -calmodulin complex inhibition [47,48]. Thus, in order to highlight the link between this vasorelaxant effect and responsible phytochemical compounds, the aqueous fraction has been used in this study, which is the anthocyanins-rich fraction, besides some other phenolic/polyphenolic compounds, as shown in the phytochemical analysis. In this regard, a previous study documented that the maximum vasorelaxant effect on the aorta appeared with a *H. sabdariffa* fraction that contains mainly anthocyanins [16]. Furthermore, these findings are supported by previous in vivo studies and clinical trials, demonstrating the action of the aqueous extract of this plant [4–7,10–12]. It has been previously reported that *H. sabdariffa* contains various anthocyanins, mainly delphinidin-3-sambubioside (hibiscin) and cyanidin-3-sambubioside (gossypicyanin) [49,50]. It seems that the vasorelaxant activity would be due to the presence of these compounds, because they are detected in abundance in aqueous extracts of *Hibiscus* calyces [25,26,51]. Hence, these bioactive components can be a base for further investigations.

5. Conclusions

To the best of our knowledge, this study is the first report to provide data about the effect of *H. sabdariffa* on preparations of small resistance arteries, and it is the first report of an electrophysiological study highlighting the effect of the extract on the calcium current. Furthermore, the results of this study provide support for the possible use of *H. sabdariffa* in traditional medicine for hypertension and participate in the understanding of the mechanistic basis of the plant. Nevertheless, the total mechanism(s) is/are still not fully understood; therefore, further studies are required.

Author Contributions: Conceptualization, A.M.A.A., E.M.A., and C.P.; formal analysis, A.M.A.A.; investigation, A.M.A.A. and B.L.Z.; methodology, A.M.A.A., B.L.Z., P.B., L.B.-D., A.Y., N.P., C.P., and E.M.A.; project administration, E.M.A., C.P., and V.M.; supervision, E.M.A., C.P., and V.M.; writing—original draft, A.M.A.A.; writing—review and editing, P.B., L.B.-D., C.E.-G., E.M.A., C.P., and V.M. All authors have read and agreed to the published version of the manuscript.

Funding: This research was funded by University of Gezira, Sudan; French embassy in Sudan and Société Française d'HyperTension Artérielle.

Acknowledgments: Anas M.A. Alsayed thanks the French embassy in Sudan and the University of Gezira, Sudan for financial support. We would like to thank the Société Française d'HyperTension Artérielle for the financial support, as well as M. Louis Fayolle and Renaud Respaud for their technical help.

Conflicts of Interest: The authors declare that they have no conflict of interest.

Abbreviations

HPLC	High-performance liquid chromatography
E _{max}	Maximum effect
EC ₅₀	Concentration required to relax the induced tone by 50%
n	number of preparations/number of rats
KRB	Krebs-Ringer Bicarbonate Buffer
HEPES	Hydroxyethyl piperazineethanesulfonic acid
KB	kraftbrühe

References

1. Ali, B.H.; Al Wabel, N.; Blunden, G. Phytochemical, pharmacological and toxicological aspects of Hibiscus sabdariffa L.: A review. *Phytother. Res. PTR* **2005**, *19*, 369–375. [[CrossRef](#)] [[PubMed](#)]
2. Morton, J.F. *Fruits of Warm Climates*; JF Morton: Miami, FL, USA, 1987; ISBN 0-9610184-1-0.
3. Ross, I.A. *Medicinal Plants of the World: Volume 1: Chemical Constituents, Traditional and Modern Medicinal Uses*, 2nd ed.; Humana Press: Totowa, NJ, USA, 2003; ISBN 978-1-58829-281-0.
4. Haji Faraji, M.; Haji Tarkhani, A. The effect of sour tea (Hibiscus sabdariffa) on essential hypertension. *J. Ethnopharmacol.* **1999**, *65*, 231–236. [[CrossRef](#)]
5. Herrera-Arellano, A.; Miranda-Sánchez, J.; Avila-Castro, P.; Herrera-Alvarez, S.; Jiménez-Ferrer, J.E.; Zamilpa, A.; Román-Ramos, R.; Ponce-Monter, H.; Tortoriello, J. Clinical effects produced by a standardized herbal medicinal product of Hibiscus sabdariffa on patients with hypertension. A randomized, double-blind, lisinopril-controlled clinical trial. *Planta Med.* **2007**, *73*, 6–12. [[CrossRef](#)] [[PubMed](#)]
6. Herrera-Arellano, A.; Flores-Romero, S.; Chávez-Soto, M.A.; Tortoriello, J. Effectiveness and tolerability of a standardized extract from Hibiscus sabdariffa in patients with mild to moderate hypertension: A controlled and randomized clinical trial. *Phytomedicine* **2004**, *11*, 375–382. [[CrossRef](#)]
7. McKay, D.L.; Chen, C.-Y.O.; Saltzman, E.; Blumberg, J.B. Hibiscus sabdariffa L. tea (tisane) lowers blood pressure in prehypertensive and mildly hypertensive adults. *J. Nutr.* **2010**, *140*, 298–303. [[CrossRef](#)]
8. Mozaffari-Khosravi, H.; Ahadi, Z.; Barzegar, K. The effect of green tea and sour tea on blood pressure of patients with type 2 diabetes: A randomized clinical trial. *J. Diet. Suppl.* **2013**, *10*, 105–115. [[CrossRef](#)]
9. Mozaffari-Khosravi, H.; Jalali-Khanabadi, B.-A.; Afkhami-Ardekani, M.; Fatehi, F.; Noori-Shadkam, M. The effects of sour tea (Hibiscus sabdariffa) on hypertension in patients with type II diabetes. *J. Hum. Hypertens.* **2009**, *23*, 48–54. [[CrossRef](#)]

10. Mojiminiyi, F.B.O.; Dikko, M.; Muhammad, B.Y.; Ojobor, P.D.; Ajagbonna, O.P.; Okolo, R.U.; Igbokwe, U.V.; Mojiminiyi, U.E.; Fagbemi, M.A.; Bello, S.O.; et al. Antihypertensive effect of an aqueous extract of the calyx of *Hibiscus sabdariffa*. *Fitoterapia* **2007**, *78*, 292–297. [[CrossRef](#)]
11. Odigie, I.P.; Ettarh, R.R.; Adigun, S.A. Chronic administration of aqueous extract of *Hibiscus sabdariffa* attenuates hypertension and reverses cardiac hypertrophy in 2K-1C hypertensive rats. *J. Ethnopharmacol.* **2003**, *86*, 181–185. [[CrossRef](#)]
12. Onyenekwe, P.C.; Ajani, E.O.; Ameh, D.A.; Gamaniel, K.S. Antihypertensive effect of roselle (*Hibiscus sabdariffa*) calyx infusion in spontaneously hypertensive rats and a comparison of its toxicity with that in Wistar rats. *Cell Biochem. Funct.* **1999**, *17*, 199–206. [[CrossRef](#)]
13. Adegunloye, B.J.; Omoniyi, J.O.; Owolabi, O.A.; Ajagbonna, O.P.; Sofola, O.A.; Coker, H.A. Mechanisms of the blood pressure lowering effect of the calyx extract of *Hibiscus sabdariffa* in rats. *Afr. J. Med. Med. Sci.* **1996**, *25*, 235–238. [[PubMed](#)]
14. Ajay, M.; Chai, H.J.; Mustafa, A.M.; Gilani, A.H.; Mustafa, M.R. Mechanisms of the anti-hypertensive effect of *Hibiscus sabdariffa* L. calyces. *J. Ethnopharmacol.* **2007**, *109*, 388–393. [[CrossRef](#)] [[PubMed](#)]
15. Obiefuna, P.C.M.; Owolabi, O.A.; Adegunloye, B.J.; Obiefuna, I.P.; Sofola, O.A. The Petal Extract of *Hibiscus sabdariffa* Produces Relaxation of Isolated Rat Aorta. *Int. J. Pharmacogn.* **1994**, *32*, 69–74. [[CrossRef](#)]
16. Sarr, M.; Ngom, S.; Kane, M.O.; Wele, A.; Diop, D.; Sarr, B.; Gueye, L.; Andriantsitohaina, R.; Diallo, A.S. In vitro vasorelaxation mechanisms of bioactive compounds extracted from *Hibiscus sabdariffa* on rat thoracic aorta. *Nutr. Metab.* **2009**, *6*, 45. [[CrossRef](#)]
17. Ali, M.B.; Salih, W.M.; Mohamed, A.H.; Homeida, A.M. Investigation of the antispasmodic potential of *Hibiscus sabdariffa* calyces. *J. Ethnopharmacol.* **1991**, *31*, 249–257. [[CrossRef](#)]
18. Fouda, A.-M.M.; Daba, M.-H.Y.; Dahab, G.M. Inhibitory effects of aqueous extract of *Hibiscus sabdariffa* on contractility of the rat bladder and uterus. *Can. J. Physiol. Pharmacol.* **2007**, *85*, 1020–1031. [[CrossRef](#)]
19. Salah, A.M.; Gathumbi, J.; Vierling, W. Inhibition of intestinal motility by methanol extracts of *Hibiscus sabdariffa* L. (Malvaceae) in rats. *Phytother. Res. PTR* **2002**, *16*, 283–285. [[CrossRef](#)]
20. Sharaf, A. The pharmacological characteristics of *Hibiscus sabdariffa* L. *Planta Med.* **1962**, *10*, 48–52. [[CrossRef](#)]
21. Da-Costa-Rocha, I.; Bonnlaender, B.; Sievers, H.; Pischel, I.; Heinrich, M. *Hibiscus sabdariffa* L.—A phytochemical and pharmacological review. *Food Chem.* **2014**, *165*, 424–443. [[CrossRef](#)]
22. Zheoat, A.M.; Gray, A.I.; Igoli, J.O.; Ferro, V.A.; Drummond, R.M. *Hibiscus* acid from *Hibiscus sabdariffa* (Malvaceae) has a vasorelaxant effect on the rat aorta. *Fitoterapia* **2019**, *134*, 5–13. [[CrossRef](#)]
23. Prasad, K. Structure and Function of Various Vascular Beds. In *Textbook of Angiology*; Chang, J.B., Ed.; Springer: New York, NY, USA, 2000; ISBN 978-1-4612-1190-7.
24. Hopkins, A.L.; Lamm, M.G.; Funk, J.L.; Ritenbaugh, C. *Hibiscus sabdariffa* L. in the treatment of hypertension and hyperlipidemia: A comprehensive review of animal and human studies. *Fitoterapia* **2013**, *85*, 84–94. [[CrossRef](#)] [[PubMed](#)]
25. Ojeda, D.; Jiménez-Ferrer, E.; Zamilpa, A.; Herrera-Arellano, A.; Tortoriello, J.; Alvarez, L. Inhibition of angiotensin convertin enzyme (ACE) activity by the anthocyanins delphinidin- and cyanidin-3-O-sambubiosides from *Hibiscus sabdariffa*. *J. Ethnopharmacol.* **2010**, *127*, 7–10. [[CrossRef](#)] [[PubMed](#)]
26. Wahabi, H.A.; Alansary, L.A.; Al-Sabban, A.H.; Glasziuo, P. The effectiveness of *Hibiscus sabdariffa* in the treatment of hypertension: A systematic review. *Phytomedicine* **2010**, *17*, 83–86. [[CrossRef](#)] [[PubMed](#)]
27. Meneses, A.; Hong, E. Spontaneously hypertensive rats: A potential model to identify drugs for treatment of learning disorders. *Hypertens. Dallas Tex 1979* **1998**, *31*, 968–972. [[CrossRef](#)] [[PubMed](#)]
28. Sajid, M.; Khan, M.R.; Ismail, H.; Latif, S.; Rahim, A.A.; Mehboob, R.; Shah, S.A. Antidiabetic and antioxidant potential of *Alnus nitida* leaves in alloxan induced diabetic rats. *J. Ethnopharmacol.* **2020**, *251*, 112544. [[CrossRef](#)]
29. Grajeda-Iglesias, C.; Figueroa-Espinoza, M.C.; Barouh, N.; Baréa, B.; Fernandes, A.; de Freitas, V.; Salas, E. Isolation and Characterization of Anthocyanins from *Hibiscus sabdariffa* Flowers. *J. Nat. Prod.* **2016**, *79*, 1709–1718. [[CrossRef](#)]
30. Kubota, Y.; Umegaki, K.; Kagota, S.; Tanaka, N.; Nakamura, K.; Kunitomo, M.; Shinozuka, K. Evaluation of blood pressure measured by tail-cuff methods (without heating) in spontaneously hypertensive rats. *Biol. Pharm. Bull.* **2006**, *29*, 1756–1758. [[CrossRef](#)]

31. Bronquard, C.; Maupoil, V.; Arbeille, B.; Fetissof, F.; Findlay, I.; Cosnay, P.; Freslon, J.-L. Contractile and relaxant properties of rat-isolated pulmonary veins related to localization and histology. *Fundam. Clin. Pharmacol.* **2007**, *21*, 55–65. [[CrossRef](#)]
32. Pasqualin, C.; Yu, A.; Malécot, C.O.; Gannier, F.; Cognard, C.; Godin-Ribuot, D.; Morand, J.; Bredeloux, P.; Maupoil, V. Structural heterogeneity of the rat pulmonary vein myocardium: Consequences on intracellular calcium dynamics and arrhythmogenic potential. *Sci. Rep.* **2018**, *8*, 3244. [[CrossRef](#)]
33. Mulvany, M.J.; Nilsson, H.; Flatman, J.A. Role of membrane potential in the response of rat small mesenteric arteries to exogenous noradrenaline stimulation. *J. Physiol.* **1982**, *332*, 363–373. [[CrossRef](#)]
34. Andersen, Ø.M.; Jordheim, M. The Anthocyanins. In *Flavonoids: Chemistry, Biochemistry, and Applications*; Andersen, Ø.M., Markham, K.R., Eds.; CRC Press Taylor & Francis Group: Boca Raton, FL, USA, 2006; Chapter 10, pp. 471–537.
35. Feelisch, M.; Kotsonis, P.; Siebe, J.; Clement, B.; Schmidt, H.H. The soluble guanylyl cyclase inhibitor 1H-[1,2,4]oxadiazolo[4,3,-a]quinoxalin-1-one is a nonselective heme protein inhibitor of nitric oxide synthase and other cytochrome P-450 enzymes involved in nitric oxide donor bioactivation. *Mol. Pharmacol.* **1999**, *56*, 243–253. [[CrossRef](#)] [[PubMed](#)]
36. Brozovich, F.V.; Nicholson, C.J.; Degen, C.V.; Gao, Y.Z.; Aggarwal, M.; Morgan, K.G. Mechanisms of Vascular Smooth Muscle Contraction and the Basis for Pharmacologic Treatment of Smooth Muscle Disorders. *Pharmacol. Rev.* **2016**, *68*, 476–532. [[CrossRef](#)] [[PubMed](#)]
37. Belles, B.; Malécot, C.O.; Hescheler, J.; Trautwein, W. “Run-down” of the Ca current during long whole-cell recordings in guinea pig heart cells: Role of phosphorylation and intracellular calcium. *Pflüg. Arch.* **1988**, *411*, 353–360. [[CrossRef](#)]
38. Leloup, A.J.A.; Van Hove, C.E.; De Moudt, S.; De Meyer, G.R.Y.; De Keulenaer, G.W.; Franssen, P. Vascular smooth muscle cell contraction and relaxation in the isolated aorta: A critical regulator of large artery compliance. *Physiol. Rep.* **2019**, *7*. [[CrossRef](#)]
39. Mulvany, M.J.; Halpern, W. Contractile properties of small arterial resistance vessels in spontaneously hypertensive and normotensive rats. *Circ. Res.* **1977**, *41*, 19–26. [[CrossRef](#)] [[PubMed](#)]
40. Owolabi, O.A.; Adegunloye, B.J.; Ajagbona, O.P.; Sofola, O.A.; Obiefuna, P.C.M. Mechanism of Relaxant Effect Mediated by an Aqueous Extract of Hibiscus sabdariffa Petals in Isolated Rat Aorta. *Int. J. Pharmacogn.* **1995**, *33*, 210–214. [[CrossRef](#)]
41. Micucci, M.; Malaguti, M.; Toschi, T.G.; Di Lecce, G.; Aldini, R.; Angeletti, A.; Chiarini, A.; Budriesi, R.; Hrelia, S. Cardiac and Vascular Synergic Protective Effect of Olea europea L. Leaves and Hibiscus sabdariffa L. Flower Extracts. *Oxid. Med. Cell. Longev.* **2015**, *2015*, 318125. [[CrossRef](#)]
42. Bolton, T.B. Mechanisms of action of transmitters and other substances on smooth muscle. *Physiol. Rev.* **1979**, *59*, 606–718. [[CrossRef](#)]
43. Karaki, H.; Weiss, G.B. Calcium channels in smooth muscle. *Gastroenterology* **1984**, *87*, 960–970. [[CrossRef](#)]
44. Lim, Y.-C.; Budin, S.B.; Othman, F.; Latip, J.; Zainalabidin, S. Roselle Polyphenols Exert Potent Negative Inotropic Effects via Modulation of Intracellular Calcium Regulatory Channels in Isolated Rat Heart. *Cardiovasc. Toxicol.* **2017**, *17*, 251–259. [[CrossRef](#)]
45. Tykocki, N.R.; Boerman, E.M.; Jackson, W.F. Smooth Muscle Ion Channels and Regulation of Vascular Tone in Resistance Arteries and Arterioles. *Compr. Physiol.* **2017**, *7*, 485–581. [[CrossRef](#)] [[PubMed](#)]
46. Riaz, G.; Chopra, R. A review on phytochemistry and therapeutic uses of *Hibiscus sabdariffa* L. *Biomed. Pharmacother.* **2018**, *102*, 575–586. [[CrossRef](#)] [[PubMed](#)]
47. Scholz, E.P.; Zitron, E.; Katus, H.A.; Karle, C.A. Cardiovascular Ion Channels as a Molecular Target of Flavonoids. *Cardiovasc. Ther.* **2010**, *28*, e46–e52. [[CrossRef](#)] [[PubMed](#)]
48. Torres-Piedra, M.; Figueroa, M.; Hernández-Abreu, O.; Ibarra-Barajas, M.; Navarrete-Vázquez, G.; Estrada-Soto, S. Vasorelaxant effect of flavonoids through calmodulin inhibition: Ex vivo, in vitro, and in silico approaches. *Bioorg. Med. Chem.* **2011**, *19*, 542–546. [[CrossRef](#)]
49. Beltrán-Debón, R.; Alonso-Villaverde, C.; Aragonès, G.; Rodríguez-Medina, I.; Rull, A.; Micol, V.; Segura-Carretero, A.; Fernández-Gutiérrez, A.; Camps, J.; Joven, J. The aqueous extract of *Hibiscus sabdariffa* calices modulates the production of monocyte chemoattractant protein-1 in humans. *Phytomedicine* **2010**, *17*, 186–191. [[CrossRef](#)]

50. Peng, C.-H.; Chyau, C.-C.; Chan, K.-C.; Chan, T.-H.; Wang, C.-J.; Huang, C.-N. Hibiscus sabdariffa polyphenolic extract inhibits hyperglycemia, hyperlipidemia, and glycation-oxidative stress while improving insulin resistance. *J. Agric. Food Chem.* **2011**, *59*, 9901–9909. [[CrossRef](#)]
51. Ali, B.H.; Cahliková, L.; Opletal, L.; Karaca, T.; Manoj, P.; Ramkumar, A.; Al Suleimani, Y.M.; Al Za'abi, M.; Nemmar, A.; Chocholousova-Havlikova, L.; et al. Effect of aqueous extract and anthocyanins of calyces of Hibiscus sabdariffa (Malvaceae) in rats with adenine-induced chronic kidney disease. *J. Pharm. Pharmacol.* **2017**, *69*, 1219–1229. [[CrossRef](#)]



© 2020 by the authors. Licensee MDPI, Basel, Switzerland. This article is an open access article distributed under the terms and conditions of the Creative Commons Attribution (CC BY) license (<http://creativecommons.org/licenses/by/4.0/>).