



**HAL**  
open science

## Phenotypes induced by NM causing alpha-skeletal muscle actin mutants in fibroblasts, Sol 8 myoblasts and myotubes.

Drieke Vandamme, Ellen Lambert, Davy Waterschoot, Davina Tondeleir, Joël Vandekerckhove, Laura Machesky, Bruno Constantin, Heidi Rommelaere, Christophe Ampe

### ► To cite this version:

Drieke Vandamme, Ellen Lambert, Davy Waterschoot, Davina Tondeleir, Joël Vandekerckhove, et al.. Phenotypes induced by NM causing alpha-skeletal muscle actin mutants in fibroblasts, Sol 8 myoblasts and myotubes.. BMC Research Notes, 2009, 2, pp.40. 10.1186/1756-0500-2-40 . hal-02880252

**HAL Id: hal-02880252**

**<https://hal.science/hal-02880252v1>**

Submitted on 17 Nov 2022

**HAL** is a multi-disciplinary open access archive for the deposit and dissemination of scientific research documents, whether they are published or not. The documents may come from teaching and research institutions in France or abroad, or from public or private research centers.

L'archive ouverte pluridisciplinaire **HAL**, est destinée au dépôt et à la diffusion de documents scientifiques de niveau recherche, publiés ou non, émanant des établissements d'enseignement et de recherche français ou étrangers, des laboratoires publics ou privés.



Distributed under a Creative Commons Attribution 4.0 International License

Short Report

Open Access

## Phenotypes induced by NM causing $\alpha$ -skeletal muscle actin mutants in fibroblasts, Sol 8 myoblasts and myotubes

Drieke Vandamme<sup>1,2</sup>, Ellen Lambert<sup>1,2,3</sup>, Davy Waterschoot<sup>1,2</sup>, Davina Tondeleir<sup>1,2</sup>, Joël Vandekerckhove<sup>1,2</sup>, Laura M Machesky<sup>4</sup>, Bruno Constantin<sup>5</sup>, Heidi Rommelaere<sup>1,2,6</sup> and Christophe Ampe\*<sup>1,2</sup>

Address: <sup>1</sup>Department of Biochemistry, Faculty of Medicine and Health Sciences, Ghent University, A. Baertsoenkaai 3, Gent, Belgium, <sup>2</sup>Department of Medical Protein Research, VIB, A. Baertsoenkaai 3, Gent, Belgium, <sup>3</sup>Department of Plant Production, Faculty of Bioscience Engineering, UGent, Coupure associations 653, Gent, Belgium, <sup>4</sup>CRUK Beatson Institute for Cancer Research, Garscube Estate, Switchback Rd., Bearsden, Glasgow, G63 9AE, UK, <sup>5</sup>Institut de Physiologie et Biologie Cellulaire, UMR CNRS/Université de Poitiers 6187, Pôle Biologie Santé, 86022 Poitiers cedex, France and <sup>6</sup>Current address : Ablynx N.V., Technologiepark 4, 9052 Zwijnaarde, Belgium

Email: Drieke Vandamme - drieke.vandamme@ugent.be; Ellen Lambert - ellen.lambert@ugent.be; Davy Waterschoot - davy.waterschoot@ugent.be; Davina Tondeleir - davina.tondeleir@ugent.be; Joël Vandekerckhove - joel.vandekerckhove@ugent.be; Laura M Machesky - l.machesky@beatson.gla.ac.uk; Bruno Constantin - bruno.constantin@univ-poitiers.fr; Heidi Rommelaere - Heidi.Rommelaere@ablynx.com; Christophe Ampe\* - christophe.ampe@ugent.be

\* Corresponding author

Published: 10 March 2009

Received: 16 January 2009

BMC Research Notes 2009, 2:40 doi:10.1186/1756-0500-2-40

Accepted: 10 March 2009

This article is available from: <http://www.biomedcentral.com/1756-0500/2/40>

© 2009 Ampe et al; licensee BioMed Central Ltd.

This is an Open Access article distributed under the terms of the Creative Commons Attribution License (<http://creativecommons.org/licenses/by/2.0>), which permits unrestricted use, distribution, and reproduction in any medium, provided the original work is properly cited.

### Abstract

**Background:** Nemaline myopathy is a neuromuscular disorder characterized by the presence of nemaline bodies in patient muscles. 20% of the cases are associated with  $\alpha$ -skeletal muscle actin mutations. We previously showed that actin mutations can cause four different biochemical phenotypes and that expression of NM associated actin mutants in fibroblasts, myoblasts and myotubes induces a range of cellular defects.

**Findings:** We conducted the same biochemical experiments for twelve new actin mutants associated with nemaline myopathy. We observed folding and polymerization defects. Immunostainings of these and eight other mutants in transfected cells revealed typical cellular defects such as nemaline rods or aggregates, decreased incorporation in F-actin structures, membrane blebbing, the formation of thickened actin fibres and cell membrane blebbing in myotubes.

**Conclusion:** Our results confirm that NM associated  $\alpha$ -actin mutations induce a range of defects at the biochemical level as well as in cultured fibroblasts and muscle cells.

### Background

Nemaline myopathy (NM) is a neuromuscular disorder, characterized by muscle weakness and hypotonia. It is a disease of the skeletal muscle sarcomere and is caused by mutations in components of the thin filament [1]; in

about 20% of the cases this is in  $\alpha$ -skeletal muscle actin (*ACTA1*, further referred to as  $\alpha$ -actin) [2-4]. At the cellular level typical patient phenotypes are the presence of actin containing intranuclear or sarcoplasmic rod-shaped structures (nemaline rods) that may be present either in

the sarcoplasm or in the nuclei [4]. Another congenital myopathy associated with ACTA1 mutations is actin myopathy, this disease is phenotypically similar to NM, and often studied together with NM, however the cellular inclusions here are actin aggregates instead of rods [4]. Curiously, the proportion of muscle fibers containing rods or aggregates does not correlate with the degree of muscle weakness [5].

To date, more than 100  $\alpha$ -actin mutations leading to NM or actin myopathy have been identified [6]. Given that  $\alpha$ -actin is an essential protein for muscle function it is not surprising that mutations in this protein cause diseases (reviewed in Tondeleire et al., in press, [7]). Actin molecules require folding by the chaperones prefoldin and the cytoplasmic chaperonin CCT, to become functionally active [8-10] and have an absolute requirement for ATP to remain stable [11]. Their self assembly results in the formation of actin filaments that in muscle are part of the thin filaments and that interact with the various actin binding proteins such as  $\alpha$ -actinin, tropomyosin and myosin in muscle. As a result, a disease-causing mutation in actin can affect one or more of these properties or functions and this heterogeneity at the biochemical level can cause mixed phenotypes and render diseases also heterogeneous at the cellular level. This was reflected in our previous reports on several congenital myopathy causing mutants [12-14] and Rommelaere et al, submitted. We discovered four different biochemical phenotypes [12] and were able to induce typical disease characteristics as rods and aggregates in fibroblasts, myoblasts and myotubes [12,14]. Additionally, we found that NM associated actin mutants induce cell membrane blebbing in differentiating myoblasts (Rommelaere et al., submitted). Here we biochemically analyze 12 new  $\alpha$ -actin mutants associated with NM and investigate their cellular phenotypes as well as further characterization of 8 mutants biochemically characterized in Costa et al. [12].

## Methods

### Construction and biochemical analysis of the $\alpha$ -actin CCD and CFTD causing mutants

Construction and biochemical analysis of the NM causing  $\alpha$ -actin mutants were performed as described previously [12,14,15]. Briefly, mutants were expressed as  $^{35}\text{S}$ -labeled proteins in *in vitro* transcription translation reactions in reticulocyte lysates and analysed on native gels with or without ATP, followed by autoradiography. For band-shift assays thymosin  $\beta$ 4, DNaseI and vitamin D binding protein were added to the reaction. Co-polymerisation assays were performed by adding WT rabbit skeletal muscle  $\alpha$ -actin. After polymerisation, the soluble and insoluble fraction were separated by centrifugation, and the amount of mutant actin in each fraction was analysed by autoradiography.

### Cell culture and transfection

Cell culture and transfection were performed as previously described [12,14]. Briefly, NIH3T3 fibroblasts were transfected with lipofectamin 2000 (Invitrogen), according to manufacturer's protocol. Coverslips were mounted for immunofluorescence after 24 hours of transfection. Sol 8 myogenic cells [16] were seeded in 12 well plates containing thermanox coverslips (Nunc). After 24 hours the cells were transfected using jetPEI (Qbiogene) or nucleofected, using cell line nucleofector kit V (Amaxa biosystems) with the pcDNA3.1 vectors encoding N-terminally myc-tagged  $\alpha$ -skeletal muscle actin (wild type or mutant). Coverslips were mounted for immunofluorescence after 48 hours of transfection. To promote fusion (F) of myoblasts into myotubes, the growth medium was replaced by a differentiation medium with 2% horse serum. Myotubes were immunostained on day F+4 or F+5.

### Immunological staining

Standard immunological staining was performed [12,14]. To visualise the mutant actins we used a polyclonal anti-myc antibody (Abcam) and fluorescent phalloidin (Molecular Probes) for filamentous actin. The immunolabelled samples were examined using an Olympus IX71 epifluorescence microscope and images were acquired using a cooled Spot Camera (Diagnostic Instruments) and Analysis software (Soft Imaging Systems).

For statistics of stress fibre incorporation and diffuse cytoplasmic myc-actin staining, pictures were visually inspected and blindly scored by two persons. P-values were calculated by a Fisher's exact test <http://www.socr.ucla.edu/htmls/ana/FishersExactTestAnalysis.html> on the separate experiments.

## Results

### Biochemical characterization of $\alpha$ -skeletal muscle actin mutants causing NM

In a previous study [12], we biochemically characterized a set of actin mutants causing nemaline myopathy and discovered four different biochemical phenotypes: folding defective mutants, unstable mutants, mutants with reduced copolymerisation capacity and mutants without defects in these tests (for details and limitations of these assays see [12,15,17]). In the present study, we investigated twelve new NM mutants using similar approaches. In patient muscles, these mutants induce different abnormal structures such as intranuclear and cytoplasmic rods and/or an excess of thin filaments (Table 1).

The locations of the mutations in the actin molecule are displayed in pink on the 3D-representation of the actin molecule (Figure 1A) [18]. Mutations are found in sub-

**Table 1: Description and results of the biochemical characterization of 16 new nemaline myopathy causing  $\alpha$ -skeletal muscle actin mutants.**

Mutant	phenotype	Folding	CAP	ABP	copol	In actin structure (Kabsch)	reference
<b>WT</b>		+	+	+	++		
<b>D25N</b>	severe NEM	+	+	+	++	Subdomain I, Close to ATP cleft	[4]
<b>V35L</b>	severe NEM	+	+	+	++	Subdomain II, Buried	[19]
<b>P38L</b>	severe NEM	+	+	+	+	Subdomain II	[19]
<b>H73L</b>	severe NEM	+	-	+, VDBP+/-	+	Subdomain II, In ATP cleft, stabilizing interaction with D179	[19]
<b>I75L</b>	severe NEM	+	+	+, VDBP+/-	++	Subdomain II, In ATP cleft	[19]
<b>E83K</b>	Typical NEM	+/-	+	+	+ more aggr	Helix	[19]
<b>R116H</b>	Severe NEM	+ +/-	+	+	+ more aggr	Subdomain I, Helix, close to ATP cleft	[4]
<b>V163M</b>	IRM	+/-	+	+	+ more aggr	Subdomain III, Buried, near ATP-cleft	[27]
<b>Q246R</b>	mild, typical and severe	+	+	+	++	Subdomain IV, Close to F-actin contact	[19,20]
<b>G251D</b>	severe NEM	+	+/-	+	++	Subdomain IV, At surface	[19]
<b>R256H</b>	severe NEM	+	-	+	+	Subdomain IV, Close to F-actin contact	[2]
<b>M269R</b>	mild NEM	+	+	+	+	Subdomain IV, F-actin contact, hydrophobic plug	[21]

The properties investigated here are folding, binding to cyclase associated protein (CAP), binding to the actin binding proteins (ABP) thymosin $\beta$ 4, DNaseI and Vitamin D binding protein (VDBP) and copolymerisation with rabbit  $\alpha$ -skeletal muscle actin (copol). Also the location in the actin structure according to Kabsch et al. [18] is indicated, in addition to the patients phenotype as presented in the reference with NEM = nemaline myopathy, sarcoplasmic nemaline bodies; IRM = intranuclear rod myopathy.

domains I (D25N and R116H), II (V35L, P38L, H73L and I75L), III (V163M) and IV (Q246R, G251R, R256H and M269R). Some of these residues (D25, H73, I75, R116 and V163) are in or near the nucleotide-binding pocket. [19-21]

All these actin mutants are capable of folding properly, since they migrate at a position similar to monomeric actin in gels with ATP (Figure 1B) and since they can bind to the ABPs tested (i.e. thymosin  $\beta$ 4, DNaseI and VDBP, Table 1). However, for three of the mutants act E83K, R116H and V163M a significant proportion of the proteins remains bound to CCT on native gels (Figure 1B), indicating that they fold less well compared to WT- $\alpha$ -actin. On gels without ATP, mutants act E83K, V163M and M269R show a slight increase in CAP-binding [22]. This effect is, however, not very strong and precludes to conclusively decide that these mutants are unstable due to impaired nucleotide binding [10,17]. We note however that mutants E83K and V163M induced more aggregation in the in vitro translation reaction than does mutant R116H (Table 1). In copolymerisation tests mutants act P38L, H73L, E83K, R116H, V163M, R256H and M269R displayed reduced copolymerization capacity, whereas mutants act D25N, V35L, I75L, Q246R and G251D show normal copolymerisation.

#### **Cellular phenotypes induced by the NEM causing $\alpha$ -skeletal muscle actin mutants**

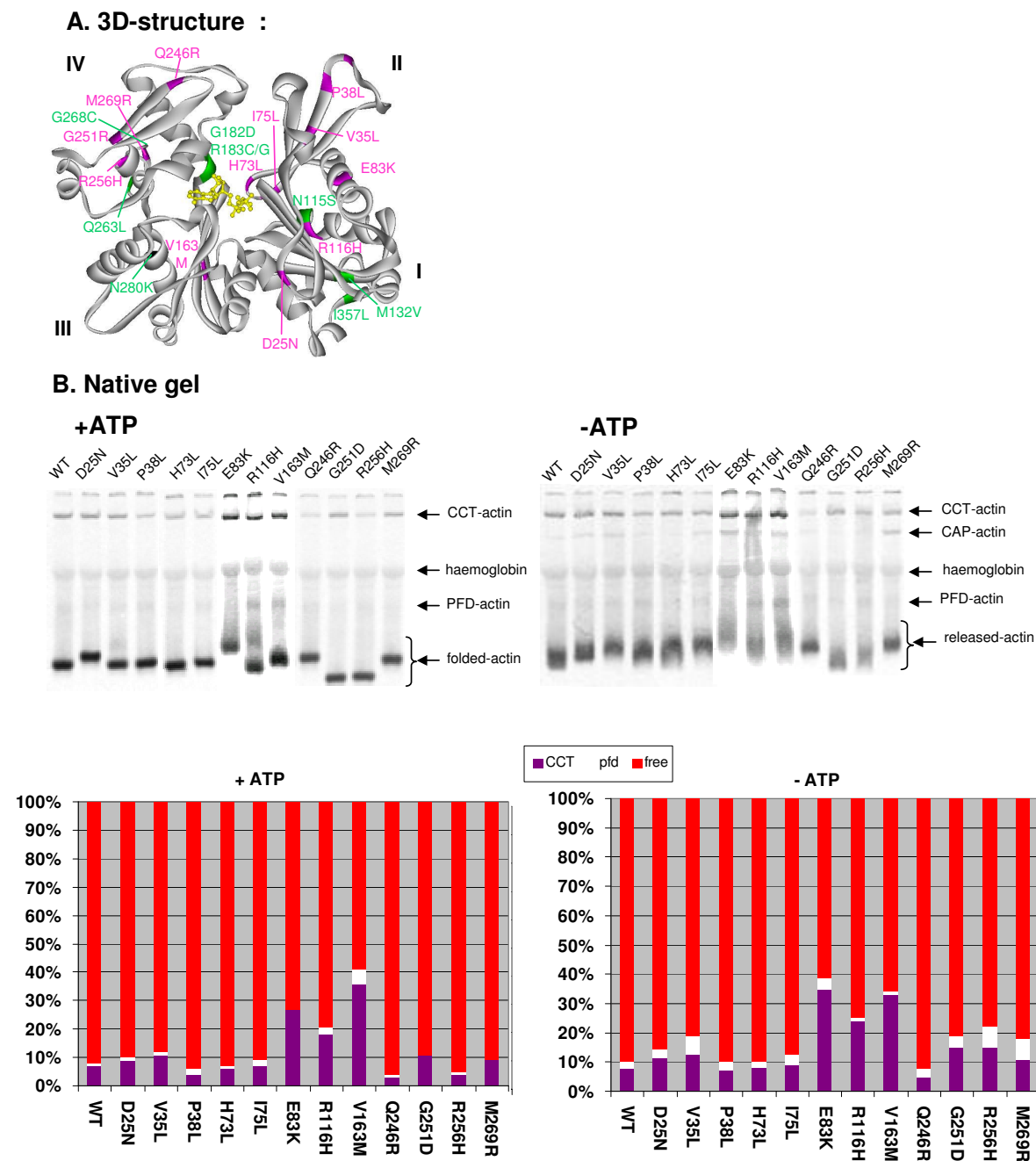
Since we previously observed that expression of myc-tagged  $\alpha$ -actin mutants associated with NM can induce a range of defects in the actin cytoskeleton, we constructed all of these mutants with an N-terminal myc-tag and transfected them in NIH3T3 fibroblasts and Sol8 myob-

lasts [12,14] and Rommelaere et al. submitted. In order to analyse their incorporation in the actin cytoskeleton or the occurrence of rods or aggregates, we performed immunological staining of the myc-tagged mutants, together with fluorescent phalloidin staining for F-actin containing structures. We performed a similar analysis on myc-tagged actin mutants N115S, G182D, R183G, R183C, Q263L and G268C (green in Figure 1A), which were previously biochemically characterized in Costa et al. (Table 2) (additionally, G182D which was only characterized in fibroblasts in Costa et al. was analysed here in muscle cells) [12]. The results of this *ex vivo* analysis are summarized in Table 3.

#### *$\alpha$ -actin mutants induce nemaline rod-like structures and aggregates in fibroblasts and myoblasts*

Four of the investigated  $\alpha$ -actin mutants induce rod-like structures in fibroblasts: I75L and V163M induce phalloidin positive intranuclear rods (Figure 2) and H73L induces cytoplasmic phalloidin positive rods (Figure 2). R116H induces perinuclear cytoplasmic phalloidin negative rods (Figure 2).

Upon expression of act V163M in myoblasts we also observed intranuclear rods. Another mutation at this position, V163L, similarly induces intranuclear rods in both fibroblasts and myoblasts [12]. V163 lies close to the nuclear export signal [23] and therefore this mutation could interfere with nuclear export resulting in intranuclear rods (Figure 2). Domazetovska *et al.* expressed EGFP- or untagged V163L and V163M actin in fibroblast and myoblast cell lines and observed similar phalloidin positive rods. Our co-polymerization results support their observation that intranuclear rods induced by V163M



**Figure 1**  
**(A) Location of the studied ACTA1 mutations on the 3D-representation of the actin molecule [18].** Mutations indicated in green were biochemically analysed in this study, mutations indicated in pink were analysed in Costa et al. [12]. **(B)** Native gel analysis of twelve  $\alpha$ -actin mutants causing NM. Autoradiograms of native gels of  $^{35}\text{S}$ -labeled WT  $\alpha$ -actin and 12 mutants causing NM run with or without ATP. Actins were produced in *in vitro* transcription translation reactions in reticulocyte lysate, which endogenously contains CAP [22] and the actin folding machinery, prefoldin (PFD) and CCT [8,9,15]. The positions of these complexes with actin are indicated. The graph underneath indicates the percentage of actin in each of the bands (associated with CCT (purple), with prefoldin (white, (+ATP)) or CAP (white, (-ATP)) and free actin (red). In each lane the total actin is the sum of these three actin species.

**Table 2: clinical phenotype and position or the function in the actin structure of mutations which were biochemically characterized in Costa et al. 2004 [12].**

Mutation	Phenotype	Position or Function in Actin Structure
<b>N115S</b>	typical, NEM	Buried, near nucleotide cleft
<b>M132V</b>	mild, NEM	Buried
<b>G182D</b>	typical, NEM	in nucleotide cleft
<b>R183C</b>	severe, NEM	H-bonds for nucleotide cleft closure
<b>R183G</b>	typical./severe, NEM	H-bonds for nucleotide cleft closure
<b>Q263L</b>	severe, NEM	Surface, near hydrophobic plug
<b>G268C</b>	mild/typical. NEM	F-actin contact, hydrophobic pocket
<b>I357L</b>	Severe, NEM, IRM	buried

NEM = nemaline myopathy, sarcoplasmic nemaline bodies; IRM = intranuclear rod myopathy.

might be due to an increased availability of monomeric actin caused by reduced incorporation of the mutant in actin filaments [24,25]. However we can not generalize this to the other mutants as I75L for instance displays normal co-polymerisation.

Another phenotype associated with expression of nemaline myopathy associated actin mutants in cultured cells is the formation of actin-containing phalloidin negative aggregates. For eleven of the investigated mutants we observed these in fibroblasts (D25N, E83K, R116H, V163M, R183G, R183C, Q246R, G251D, G268C and M269R) (Figure 3). In most cases the aggregates were cytoplasmic or perinuclear, yet for R116H and V163M we additionally observed intranuclear aggregates, consistent with the fact that these mutants also induce intranuclear rods. Strikingly, E83K, R116H and V163M also aggregate in the *in vitro* translation assays (see above). In addition, for a subset of mutants, we also observed cytoplasmic aggregates in Sol8 myoblasts. This is the case for mutants D25N, P38L, I75L, M132V, V163M, R183C, G251D, R256H and Q263L (Figure 3).

As in previous reports [12], not all mutants induced the formation of rods or aggregates, and these phenotypes are induced more in fibroblasts than in muscle cells. This supports the hypothesis that rods can be considered secondary effects in patient muscles, which serve as 'rescue' mechanisms to remove the mutant actin from the active pool, and that other defects could underlie the muscle weakness in NM patients [26] (Rommelaere submitted).

The fact that we observed both phalloidin positive and negative rod-like structures and aggregates, is consistent with previous reports on fibroblasts and muscle cells expressing NM causing actin mutants [13,27]. A lack of phalloidin staining could indicate that the rods do not contain filamentous actin, or that the F-actin is not accessible for the phalloidin. At present it is not known whether patient rods stain with phalloidin however our

results indicate that rods induced by different mutants could have a different composition and/or organisation.

#### *Diffuse cytoplasmic myc-staining in fibroblasts*

To test the ability of the mutants to incorporate in filamentous structures, we calculated the percentage of fibroblasts in which a particular mutant is able to incorporate in stress fibres. In addition, we also scored for diffuse cytoplasmic staining of the myc-tagged mutant, which gives a second indication of the (lack of) incorporation in filamentous structures. Cells were visually inspected and blindly scored for both parameters by two persons and the mean was calculated. Similar to WT, all mutants are able to incorporate in stress fibres in a certain percentage of the cells. For G182D and I375L actin expressing fibroblasts this was significantly lower than for WT actin expressing cells (Figure 4A). The percentage of cells with a diffuse cytoplasmic myc-staining, shows more variation (Figure 4B): V35L, P38L, H73L, and R183G induce this cytoplasmic staining in significantly more cells than WT myc-actin. N115S, V163M, G182D, Q246R, G251D, R256H, M269R and I375L also have a tendency to display this phenotype more than cells expressing WT myc-actin, yet they do so to a lesser extent than the former mutants.

#### *Five mutants induce cell blebbing in muscle cells*

Consistent with our previous observation that particular NM actin mutants induce blebbing in myoblasts (Rommelaere et al., submitted), we also found five mutants here displaying this phenotype: act P38L, E83K, R116H, R183C and Q246R (Figure 4C–F). Each of these mutants is enriched in the blebs.

#### *Phenotypes induced in myotubes*

We differentiated myoblasts, transfected with the  $\alpha$ -actin mutants, during five days and allowed them to form multinucleated myotubes. Immunological staining revealed that all studied mutants incorporate to a certain degree in actin fibers in myotubes (shown for H73L and G268C in Figure 5).

**Table 3: Summary of the phenotypes observed upon expression of NM associated  $\alpha$ -actin mutants in cell cultures.**

Mutant	Clinical phenotype	Cell line	aggreg	Rods	Fibers/ Cables	Diffuse cyto local	Blebs or membrane protrusions
<b>WT</b>	-	fibroblast myoblast myotube			X X X		
<b>D25N</b>	Severe NEM	fibroblast myoblast myotube	X X X		X X X	+/-	
<b>V35L</b>	Severe NEM	fibroblast myoblast myotube			X X X	X X	
<b>P38L</b>	Severe NEM	fibroblast myoblast myotube	X		X X X	X	X
<b>H73L</b>	Severe NEM	fibroblast myoblast myotube		Cyto	X X X	X	
<b>I75L</b>	Severe NEM	fibroblast myoblast myotube	X	IR	X X X	X	
<b>E83K</b>	Typical NEM	fibroblast myoblast myotube	X		X Few X	X	X
<b>NI15S</b>	Typical NEM	fibroblast myoblast myotube			X X X	+/-	
<b>RI16H</b>	Severe NEM	fibroblast myoblast myotube	X	Cyto, perinuclear	X Few X	X	X X
<b>M132V</b>	mild NEM	fibroblast myoblast myotube	X		X X X		
<b>VI63M</b>	IRM	fibroblast myoblast myotube	X X	IR + cyto IR	Low incorporation Few Thick fibers	+/- X	
<b>GI82D</b>	typical NEM	fibroblast myoblast myotube			Low incorporation X X	+/- X	
<b>RI83C</b>	Severe NEM	Fibroblast Myoblast Myotube	X	IR	X X X		X X
<b>RI83G</b>	Int + Severe NEM	Fibroblast Myoblast Myotube	X		X X X	X	

**Table 3: Summary of the phenotypes observed upon expression of NM associated  $\alpha$ -actin mutants in cell cultures. (Continued)**

<b>Q246R</b>	Mild, typical and severe NEM	Fibroblast	X	X	
		Myoblast Myotube		X X	X
<b>G251D</b>	Severe NEM	Fibroblast	X	X	+/-
		Myoblast	X	X	X
		Myotube		X	
<b>R256H</b>	Severe NEM	Fibroblast		X	+/-
		Myoblast	X	X	
		Myotube		X	
<b>Q263L</b>	Severe NEM	fibroblast		X	
		myoblast	X	X	
		myotube		X	
<b>G268C</b>	Mild/typical NEM	fibroblast	X	X	+/-
		myoblast		X	X
		myotube		X	
<b>M269R</b>	Mild NEM	fibroblast	X	X	+/-
		myoblast		X	
		myotube	X	X	
<b>I357L</b>	IRM	fibroblast		Low incorporation	+/-
		myoblast		X	
		myotube		X	

NEM nemaline myopathy, IRM: Intranuclear Rod Myopathy, IR intranuclear rods, cyto: cytoplasmic, a cross indicates that the phenotype or normal property (fibers/cables) is present, Int: intermediate lethal phenotype

Act R116H, M132V, V163M transfected myotubes show an aberrant phenotype at this differentiation stage (Figure 5). In myotubes expressing act V163M, actin fibers appear thickened, a phenotype we, and others, previously also observed for act V163L (Rommelaere et al., submitted, [13]). This cellular phenotype is also consistent with the sarcomeric disorganization in *Drosophila* muscles expressing V163M [25]. Act R116H and M132V expressing myotubes display blebs or membranous protrusions as described for other NM mutants by Rommelaere et al. (Figure 5).

**Conclusion**

We corroborate that NM associated  $\alpha$ -actin mutations can induce a range of defects, both at the biochemical and cellular level. We show that the twenty NM mutants investigated here score at least one of the previously described cellular NM or actin myopathy associated phenotypes (Table 3), i.e. the cells display intranuclear or cytoplasmic rods, aggregates, blebs (only in differentiating myoblasts), diffuse cytoplasmic myc-actin staining or thickened actin fibres in myotubes. As observed before, not a single mutant can reproduce all phenotypes although some mutants display multiple, occasionally cell line dependent, phenotypes. On the other hand, not all mutants induce rod-like structures or aggregates, hallmarks in

patient muscles, which supports the fact that rods could be secondary effects, and that other mutant induced defects are underlying the muscle weakness in NM patients. Phalloidin staining of cells also indicate that nemaline rods induced by different actin mutants can have different organisation or composition. Additionally, as concluded before in Costa et al., [12] there is no correlation between the observed biochemical and cellular phenotypes nor between one of these and the clinical situation.

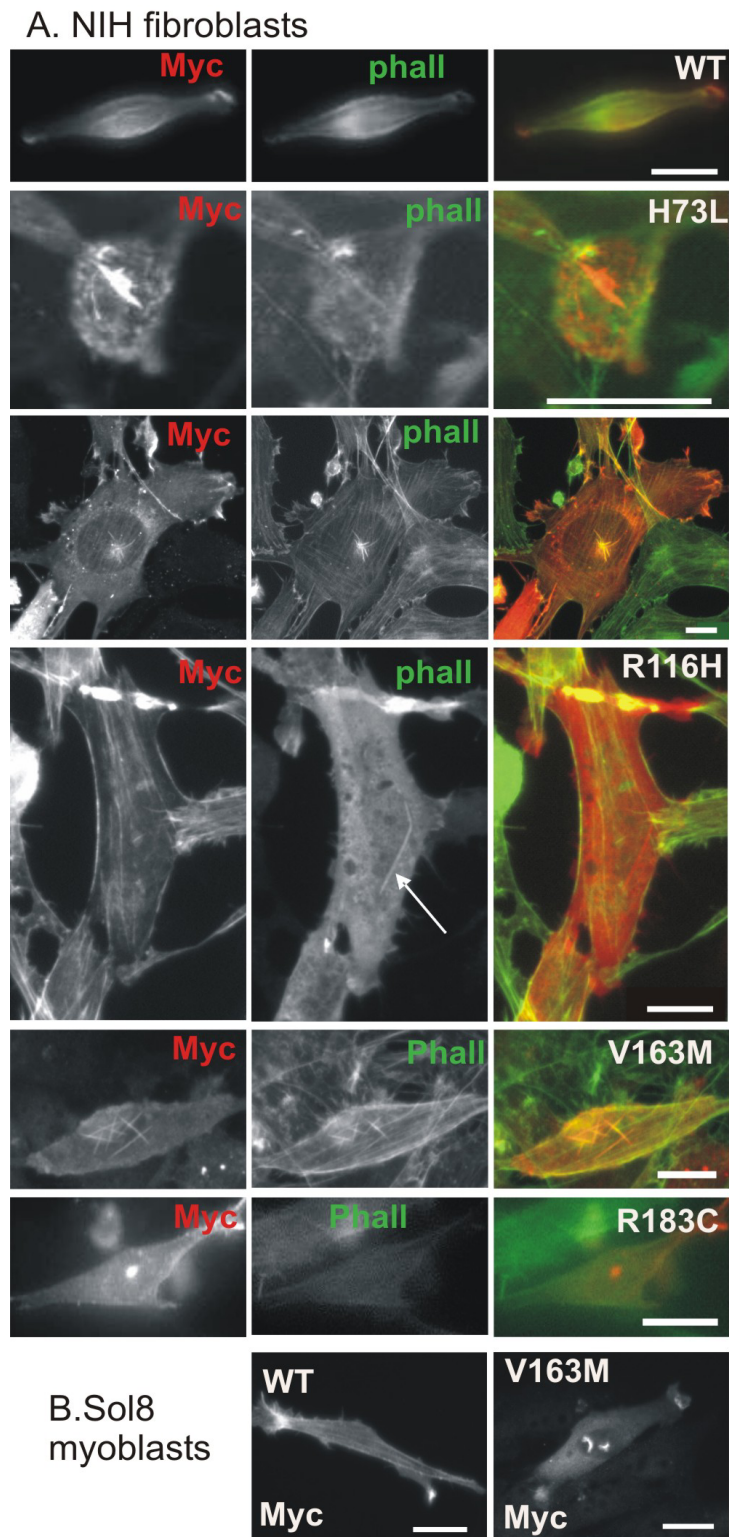
**Competing interests**

The authors declare that they have no competing interests.

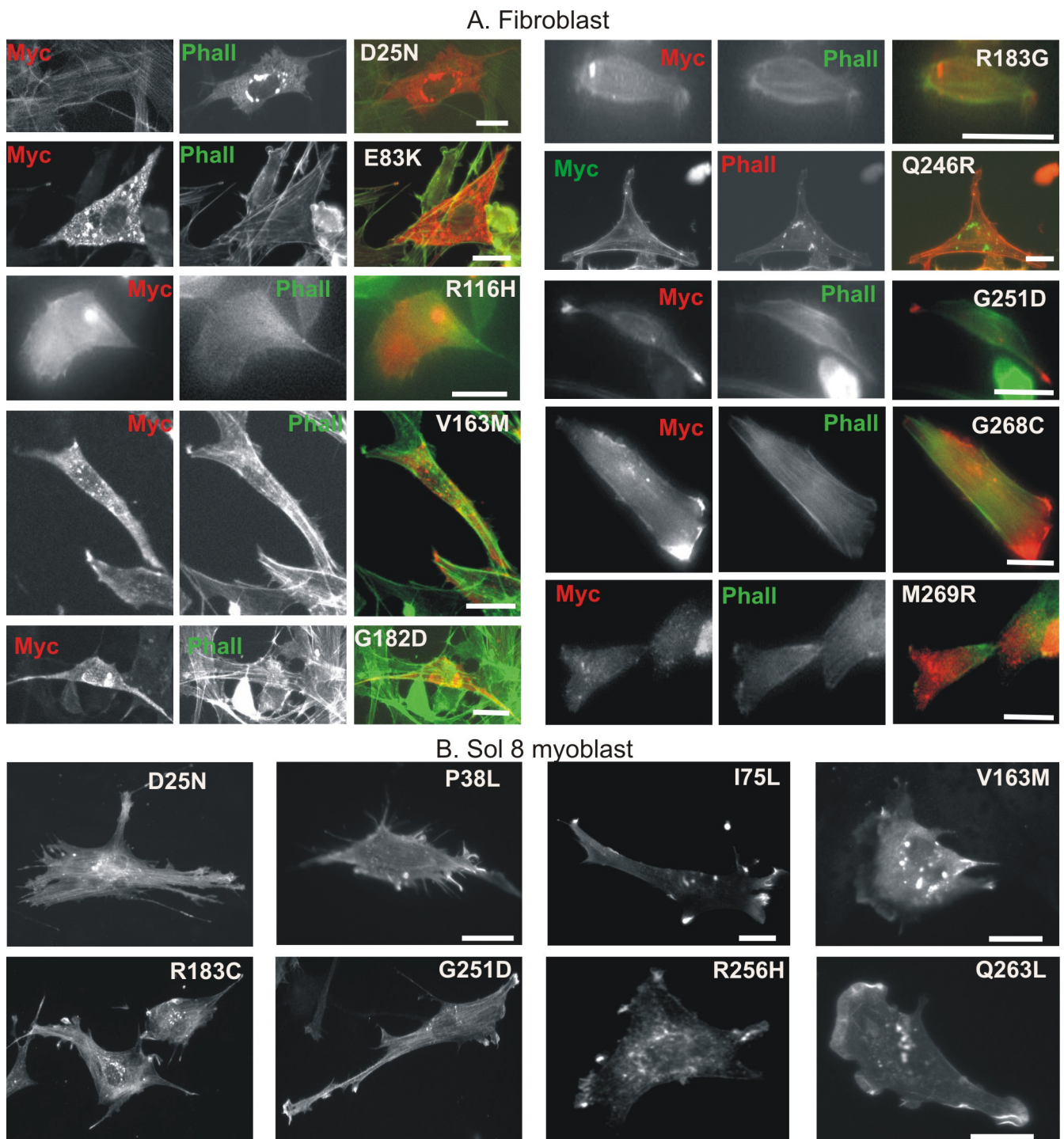
**Authors' contributions**

DV contributed to the immunostainings and microscopic analysis and drafting of the manuscript. HR contributed to the biochemical assays and immunostainings, together with DW. DT helped with the analysis of the stress fibre incorporation and diffuse cytoplasmic myc-staining. CA conceived the study, participated in its design and coordination and drafted the manuscript. JV, LM, BC helped drafting the manuscript and gave scientific support. All authors read and approved the final manuscript.

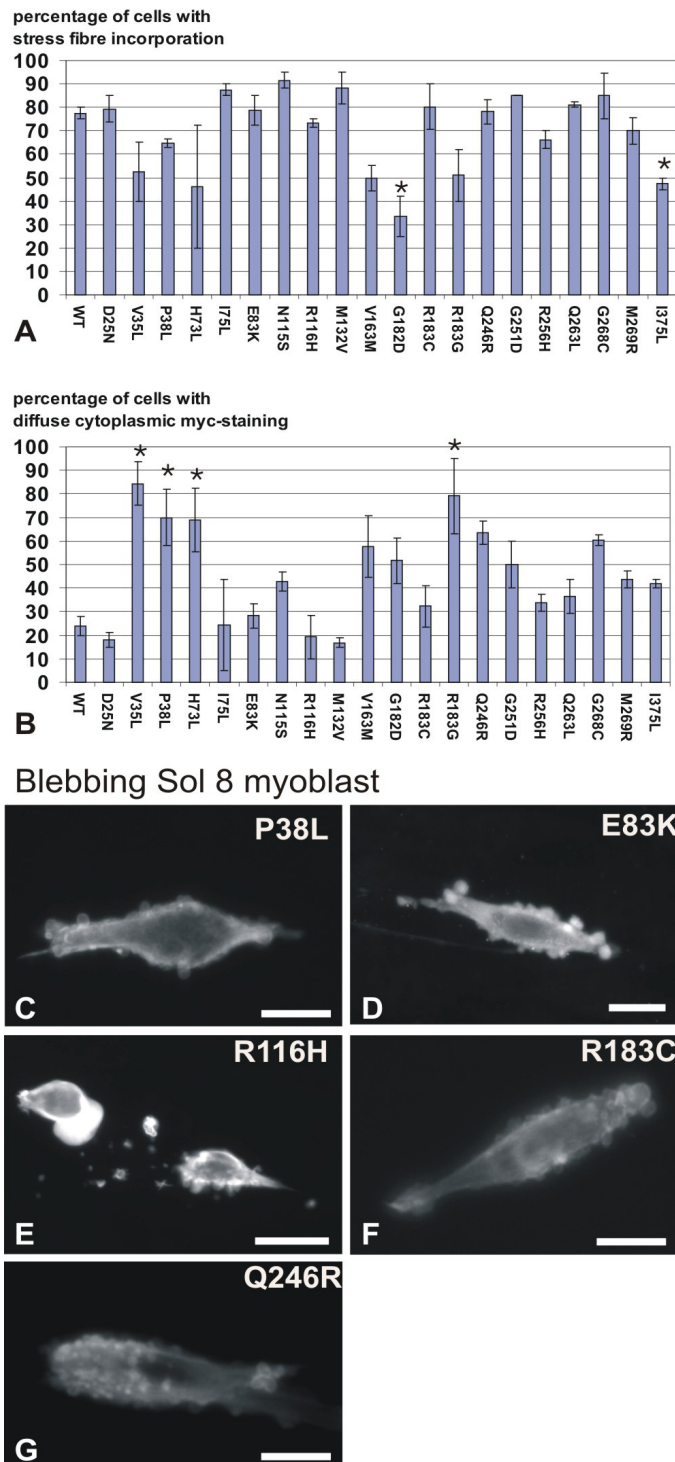




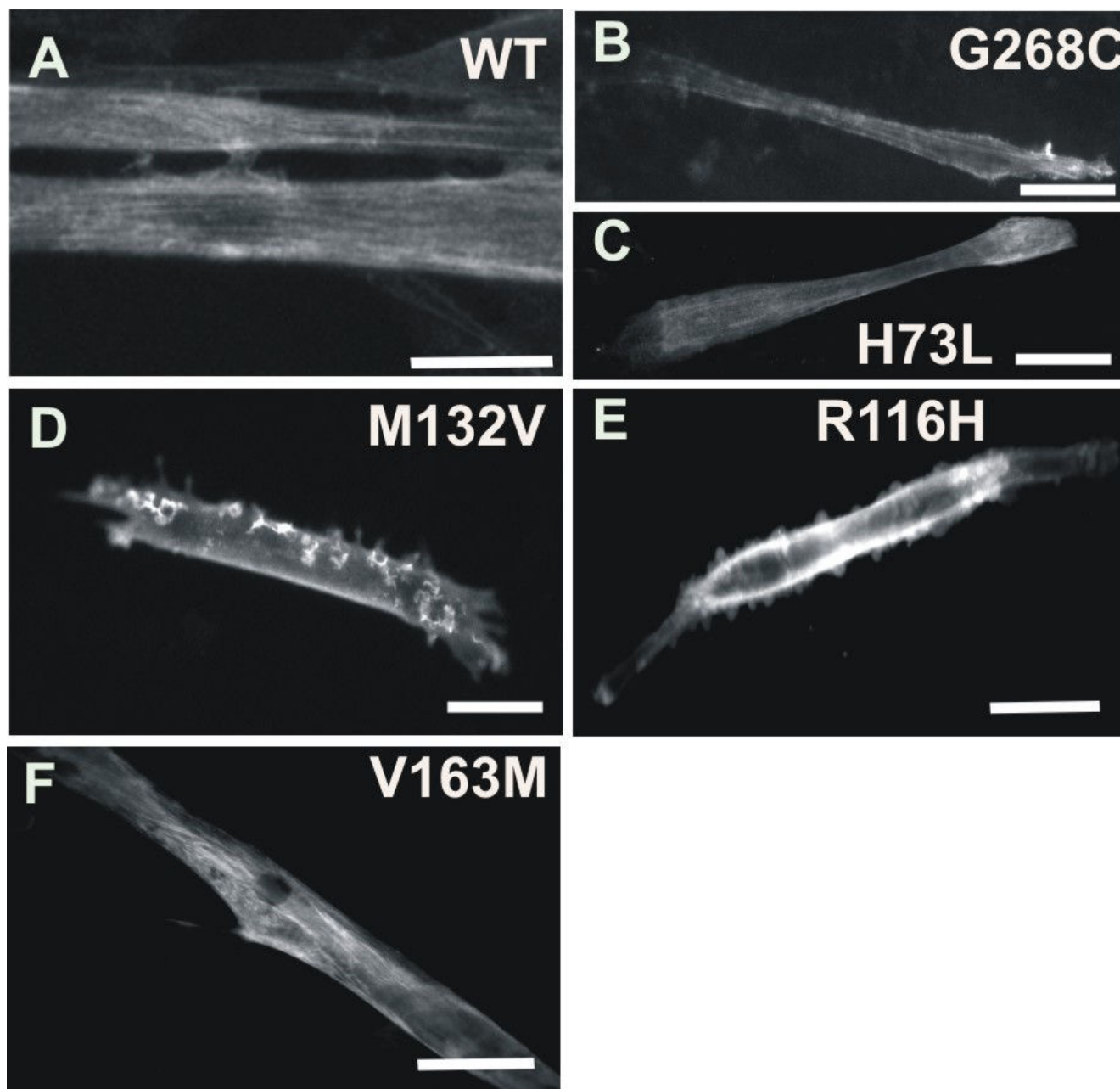
**Figure 2**  
 $\alpha$ -actin mutants induce rods in cell line cultures. (A) Myc-actin (red) and phalloidin (green) staining of NIH3T3 fibroblasts and (B) myc-actin staining of Sol8 myoblasts expressing WT actin or the indicated NM associated  $\alpha$ -actin mutant. Scale bars are 20  $\mu$ m.



**Figure 3**  
 $\alpha$ -actin mutants induce aggregates in cell line cultures. (A) Myc-actin (red) and phalloidin (green) staining of NIH3T3 fibroblasts and (B) myc-actin staining of Sol8 myoblasts expressing WT actin or the indicated NM associated  $\alpha$ -actin mutant. Scale bars are 20  $\mu$ m.



**Figure 4**  
**Some  $\alpha$ -actin mutants induce a diffuse cytoplasmic myc-staining, five  $\alpha$ -actin mutants induce blebbing.** (A-B) graphs indicating the mean percentage of fibroblasts where myc  $\alpha$ -actin is incorporated into stress fibres (A) or with diffuse cytoplasmic myc-actin staining (B). Error bars show the standard error of the mean. (\*  $p < 0,05$  for both measurements, or one measurement if  $p < 0,07$  for the second measurement) (C-G) Myc-actin staining of Sol8 myoblasts expressing  $\alpha$ -actin mutants that induce cell membrane blebbing.



**Figure 5**

**$\alpha$ -actin mutants can induce phenotypes at developing myotube stage.** Myc-staining of myotube expressing (A) WT actin (B)  $\alpha$ -actin G268C and (C)  $\alpha$ -actin H73L show actin fibres, (D)  $\alpha$ -actin M132V displays membrane protrusions and (E)  $\alpha$ -actin R116H displays membrane blebbing (F)  $\alpha$ -actin V163M has thickened actin fibres. Scale bars are 50  $\mu$ m.

### Acknowledgements

This work was supported by grants FWO-G0133.06 (to C.A.), GOA-12051401, to J.V. and C.A., IWT-51185 to D.V., a grant from CNRS, French Ministry for Research and AFM (French Association against Myopathies) to B.C., and the Muscular Dystrophy Campaign to L.M.M.

### References

- Clarkson E, Costa CF, Machesky LM: **Congenital myopathies: diseases of the actin cytoskeleton.** *J Pathol* 2004, **204(4)**:407-417.
- Nowak KJ, Wattanasirichaigoon D, Goebel HH, Wilce M, Pelin K, Donner K, Jacob RL, Hubner C, Oexle K, Anderson JR, et al: **Mutations in the skeletal muscle alpha-actin gene in patients with actin myopathy and nemaline myopathy.** *Nat Genet* 1999, **23(2)**:208-212.
- Ilkovski B, Cooper ST, Nowak K, Ryan MM, Yang N, Schnell C, Durling HJ, Roddick LG, Wilkinson I, Kornberg AJ, et al: **Nemaline myopathy caused by mutations in the muscle alpha-skeletal-actin gene.** *Am J Hum Genet* 2001, **68(6)**:1333-1343.
- Sparrow JC, Nowak KJ, Durling HJ, Beggs AH, Wallgren-Pettersson C, Romero N, Nonaka I, Laing NG: **Muscle disease caused by**

- mutations in the skeletal muscle alpha-actin gene (ACTA1).** *Neuromuscul Disord* 2003, **13(7-8)**:519-531.
5. Ryan MM, Ilkovski B, Strickland CD, Schnell C, Sanoudou D, Midgett C, Houston R, Muirhead D, Dennett X, Shield LK, et al.: **Clinical course correlates poorly with muscle pathology in nemaline myopathy.** *Neurology* 2003, **60(4)**:665-673.
  6. Wallgren-Pettersson C, Laing NG: **138th ENMC Workshop: nemaline myopathy, 20-22 2005, May Naarden, The Netherlands.** *Neuromuscul Disord* 2006, **16(1)**:54-60.
  7. Vandamme D, Ampe C, Vandekerckhove J, Lambrechts A: **Expression and functional diversity of the actin isoforms in physiological and pathological conditions.** In *The motile actin system in health and disease* Edited by: Lambrechts A, Ampe C. Kerala: Transworld Research Network; 2008:1-36.
  8. Gao Y, Thomas JO, Chow RL, Lee GH, Cowan NJ: **A cytoplasmic chaperonin that catalyzes beta-actin folding.** *Cell* 1992, **69(6)**:1043-1050.
  9. Vainberg IE, Lewis SA, Rommelaere H, Ampe C, Vandekerckhove J, Klein HL, Cowan NJ: **Prefoldin, a chaperone that delivers unfolded proteins to cytosolic chaperonin.** *Cell* 1998, **93(5)**:863-873.
  10. Neiryck K, Waterschoot D, Vandekerckhove J, Ampe C, Rommelaere H: **Actin interacts with CCT via discrete binding sites: a binding transition-release model for CCT-mediated actin folding.** *J Mol Biol* 2006, **355(1)**:124-138.
  11. Estes JE, Selden LA, Kinoshita H, Gershman LC: **Tightly-bound divalent cation of actin.** *J Muscle Res Cell Motil* 1992, **13(3)**:272-284.
  12. Costa CF, Rommelaere H, Waterschoot D, Sethi KK, Nowak KJ, Laing NG, Ampe C, Machesky LM: **Myopathy mutations in alpha-skeletal-muscle actin cause a range of molecular defects.** *J Cell Sci* 2004, **117(Pt 15)**:3367-3377.
  13. Bathe FS, Rommelaere H, Machesky LM: **Phenotypes of myopathy-related actin mutants in differentiated C2C12 myotubes.** *BMC Cell Biol* 2007, **8**:2.
  14. Vandamme D, Rommelaere H, Lambert E, Waterschoot D, Vandekerckhove J, Constantin B, Ampe C:  **$\alpha$ -skeletal muscle actin mutants causing different congenital myopathies induce similar cytoskeletal defects in cell line cultures.** *Cell motil cytoskeleton* 2009 in press.
  15. Rommelaere H, Waterschoot D, Neiryck K, Vandekerckhove J, Ampe C: **A method for rapidly screening functionality of actin mutants and tagged actins.** *Biol Proced Online* 2004, **6**:235-249.
  16. Mulle C, Benoit P, Pinset C, Roa M, Changeux JP: **Calcitonin gene-related peptide enhances the rate of desensitization of the nicotinic acetylcholine receptor in cultured mouse muscle cells.** *Proceedings of the National Academy of Sciences of the United States of America* 1988, **85(15)**:5728-5732.
  17. Rommelaere H, Waterschoot D, Neiryck K, Vandekerckhove J, Ampe C: **Structural plasticity of functional actin: pictures of actin binding protein and polymer interfaces.** *Structure (Camb)* 2003, **11(10)**:1279-1289.
  18. Kabsch W, Mannherz HG, Suck D, Pai EF, Holmes KC: **Atomic structure of the actin:DNase I complex.** *Nature* 1990, **347(6288)**:37-44.
  19. Agrawal PB, Strickland CD, Midgett C, Morales A, Newburger DE, Poulos MA, Tomczak KK, Ryan MM, Iannaccone ST, Crawford TO, et al.: **Heterogeneity of nemaline myopathy cases with skeletal muscle alpha-actin gene mutations.** *Ann Neurol* 2004, **56(1)**:86-96.
  20. Iannaccone ST, Schnell C, Muirhead D, et al.: **Nemaline myopathy associated with dominant inheritance and mutations in the skeletal muscle alpha-actin gene.** *Neuromuscul Disord* 2001, **11**:624.
  21. Jungbluth H, Sewry CA, Brown SC, Nowak KJ, Laing NG, Wallgren-Pettersson C, Pelin K, Manzur AY, Mercuri E, Dubowitz V, et al.: **Mild phenotype of nemaline myopathy with sleep hypoventilation due to a mutation in the skeletal muscle alpha-actin (ACTA1) gene.** *Neuromuscul Disord* 2001, **11(1)**:35-40.
  22. McCormack EA, Rohman MJ, Willison KR: **Mutational screen identifies critical amino acid residues of beta-actin mediating interaction between its folding intermediates and eukaryotic cytosolic chaperonin CCT.** *J Struct Biol* 2001, **135(2)**:185-197.
  23. Wada A, Fukuda M, Mishima M, Nishida E: **Nuclear export of actin: a novel mechanism regulating the subcellular localization of a major cytoskeletal protein.** *EMBO J* 1998, **17(6)**:1635-1641.
  24. Domazetovska A, Ilkovski B, Cooper ST, Ghoddusi M, Hardeman EC, Minamide LS, Gunning PW, Bamburg JR, North KN: **Mechanisms underlying intranuclear rod formation.** *Brain* 2007, **130(Pt 12)**:3275-3284.
  25. Domazetovska A, Ilkovski B, Kumar V, Valova VA, Vandebrouck A, Hutchinson DO, Robinson PJ, Cooper ST, Sparrow JC, Peckham M, et al.: **Intranuclear rod myopathy: molecular pathogenesis and mechanisms of weakness.** *Ann Neurol* 2007, **62(6)**:597-608.
  26. Sanoudou D, Corbett MA, Han M, Ghoddusi M, Nguyen MA, Vlahovich N, Hardeman EC, Beggs AH: **Skeletal muscle repair in a mouse model of nemaline myopathy.** *Hum Mol Genet* 2006, **15(17)**:2603-2612.
  27. Ilkovski B, Nowak KJ, Domazetovska A, Maxwell AL, Clement S, Davies KE, Laing NG, North KN, Cooper ST: **Evidence for a dominant-negative effect in ACTA1 nemaline myopathy caused by abnormal folding, aggregation and altered polymerization of mutant actin isoforms.** *Hum Mol Genet* 2004, **13(16)**:1727-1743.

Publish with **BioMed Central** and every scientist can read your work free of charge

"BioMed Central will be the most significant development for disseminating the results of biomedical research in our lifetime."

Sir Paul Nurse, Cancer Research UK

Your research papers will be:

- available free of charge to the entire biomedical community
- peer reviewed and published immediately upon acceptance
- cited in PubMed and archived on PubMed Central
- yours — you keep the copyright

Submit your manuscript here:  
[http://www.biomedcentral.com/info/publishing\\_adv.asp](http://www.biomedcentral.com/info/publishing_adv.asp)

