



HAL
open science

PoleSat_2018: an optimized, automated, geomatics IT tool based on a gravitational model: strategic decision support in hospital catchment area planning

Anne Quesnel-Barbet, Julien Soula, Mathurin Gamichon, Ismahane Ben Gayed, Francois Dufossez, Pierre Bazile, Eric-André Sauleau, Pierre Parrend, Arnaud Hansske

► To cite this version:

Anne Quesnel-Barbet, Julien Soula, Mathurin Gamichon, Ismahane Ben Gayed, Francois Dufossez, et al.. PoleSat_2018: an optimized, automated, geomatics IT tool based on a gravitational model: strategic decision support in hospital catchment area planning. SN Applied Sciences, 2020, 2 (5), 10.1007/s42452-020-2735-y . hal-02870881

HAL Id: hal-02870881

<https://hal.science/hal-02870881v1>

Submitted on 17 Jun 2020

HAL is a multi-disciplinary open access archive for the deposit and dissemination of scientific research documents, whether they are published or not. The documents may come from teaching and research institutions in France or abroad, or from public or private research centers.

L'archive ouverte pluridisciplinaire **HAL**, est destinée au dépôt et à la diffusion de documents scientifiques de niveau recherche, publiés ou non, émanant des établissements d'enseignement et de recherche français ou étrangers, des laboratoires publics ou privés.

1 PoleSat_2018: an optimized, automated, geomatics IT tool based on
2
3
4 a gravitational model: strategic decision support in hospital
5
6
7 catchment area planning
8
9

10
11
12 Anne Quesnel-Barbet^{a,h}¹, Julien Soula^c, Mathurin Gamichon^d, Ismahane Ben Gayed^d, François Dufosse^f,
13
14 Pierre Bazile^f, Eric-André Sauleau^{g,h}, Pierre Parrend^{h,i}, Arnaud Hansskeⁱ

15
16
17
18 ^aCHU Lille-MRRC, **Public Health Hub**, F-59000 Lille, France.

19
20 ^bUniv.Côte d'Azur, UPR, **RETINES Lab**, F-06000 Nice, France.

21
22 ^cUniv.Lille, CHU Lille, EA 2694 – **Public Health**, F-59000 Lille, France.

23
24 ^dPolytech Lille, engineering School, F-59000 Lille, France.

25
26 ^e**Medical Center (CH)** Béthune, DIM, F-62131 Verquigneul, France.

27
28 ^fFrench Association for Geographic Information, **F-94160** Saint-Mandé, France.

29
30 ^gUniversity Medical Center, Public Health, **F-67000** Strasbourg, France.

31
32 ^hUniv. Strasbourg, CNRS, CSDC UNESCO Unitwin, ICube Lab, **F-67000**, France.

33
34 ⁱECAM Strasbourg-Europe, **F-67300** Schiltigheim, France.

35
36 ^jGHICL, CH Saint-Philibert, DIM, DSIO, F-59462 Lomme, France.

37
38
39
40 **Author identification** Anne Quesnel-Barbet: orcid.org/0000-0003-1038-7344; Julien Soula: orcid.org/0000-
41
42 0003-0875-7713; François Dufosse: orcid.org/0000-0001-8349-2845; Pierre Bazile: orcid.org/ 0000-0001-
43
44 9192-7503; Eric-André Sauleau: orcid.org/0000-0003-1178-1060; **Pierre Parrend: orcid.org/0000-0002-**
45
46 **1680-1182**; Arnaud Hansske: orcid.org/0000-0001-7029-2318;
47
48
49
50
51
52
53
54

55
56 ¹ Anne Quesnel, CHU of Lille, MRRC, Pôle de Santé Publique, CS 70001, **F-59037** Lille cedex, France. ✉:

57
58 **anne.quesnel@univ-cotedazur.fr**, **Phone +33-658-066-808**.
59
60
61
62
63
64
65

Abstract

In France and elsewhere, decision-makers, healthcare professionals and health planners need to better understand and specify the provision of medical care. To this end, a hospital-based research project on a gravitational health planning modelling process was initiated in 2002. Since then, geomatics has emerged as a major scientific field for facing new challenges in medical informatics and health planning, thanks to the use of attractive interfaces, new methods and user-friendly IT technologies. Our initial 2002 model has recently been enhanced, optimized and automated as part of a spatial decision support system (PoleSat_2018). These decisive improvements and optimizations were mainly based on Delaunay triangulation, the replacement of human expertise with a heuristic dominance rule that provides a complete automated algorithm, and an online graphical user interface. Rapid, easy planning scenarios (by grouping and/or closing hospitals) give a quasi-instantaneous, strategic visualization of hospital catchment areas for decision-makers who are not experts in geomatics via ready-to-use maps and spreadsheets. This new implementation achieves our main objective, since the proposed deterministic method provides a completely automated, stable algorithm. A custom version of this tool is now being used by the French Ministry of Health for real planning issues. Consequently, PoleSat could be easily generalized as a prospective, strategic decision support tool for various health planning issues.

Article Highlights

- PoleSat's algorithm (based on a gravitational model) was developed in 2002 and **optimized**, **automated** and **stabilized** in 2016.
- **Easy-to-use**, rapidly implemented health planning scenarios provide a quasi-instantaneous, strategic view of hospital catchment areas.
- A custom version of PoleSat could be easily generalized as a prospective, strategic decision support tool for various health planning issues.

Keywords

Catchment area (health), Computer simulation, Diagnosis-related groups, Decision support systems (clinical), Gravitation, Marketing of health services

1. Introduction

As in other countries, decision-makers, **healthcare professionals and planners** in France need to understand, plan and specify the provision of medical care (in terms of hospital capacities, availability and supply) by assessing hospital attraction areas (i.e. *catchment areas*) and the patients' travel patterns [1]. In 2002, we started to develop a new method and a specific analytical tool as part of a geography PhD thesis [2]. The four-step modelling process was based on the "shortest route" hypothesis, a refined version of Reilly's law of retail gravitation, and a limited geographic area. In 2016, the method was optimized and then fully automated within a spatial decision support system [3, 4] and (using similar disease categories) extended to France as a whole.

Today, the demonstration version of the PoleSat_2018 IT tool comprises a web-based graphical user interface (*GUI*), an embedded, validated and optimized geometric algorithm, complete automation; and a modelling environment for the prospective simulation of health planning provision (e.g. hospital closures or mergers). PoleSat_2018 is based on easy-to-use technologies and includes two types of hospital department; it can be used to test assumptions and provide immediate strategic spatial views [5]. The tool was designed primarily (but not exclusively) for health decision-makers who are not experts in geomatics. It has been available as a free-to-use, open-access demonstration tool since 2018 and as a private-access custom commercial version since June 2019.

Here, we report on a decisive improvement of the initial model and thus the creation of a truly operational tool. After summarizing the development of the initial method in a context of hospital systems research, we shall describe the new implementation of the PoleSat_2018 tool and present illustrative results in response to a number of issues, such as the positive and/or negative effects of closing or merging hospital hubs/services on the neighboring hospital hubs' catchment areas and patient recruitment patterns. Our objectives were to (i) describe how we optimized and automated PoleSat's algorithm, (ii) show the settings for the connections between the algorithm and the *GUI*, and (iii) present and discuss the main modelling results that can be produced after a short processing time.

The manuscript is organized as follows. Firstly, *section 1* provides the *background* to our research on hospital/healthcare systems research, public health, healthcare catchment areas, organization needs, geomatics, geographical concepts, systems approaches and interaction models. The following **two** *sections* describe the methodology in detail: *section 2* covers the optimization and automation process (based on the

“*dominance rule*”) and our enhanced equation (based on Reilly’s law of retail gravitation), *section 3* describes the *GUI* settings related to the optimized algorithm from *section 1*. Additional methods covering the hosting, the software architecture, and verification of the computation process are given in the “Online Resource 1”. *Section 4* presents *the material* (the equipment and databases used), and *section 5* presents the results obtained with “*default simulation*” and “*advanced second-order simulations*” *GUI* settings. In *section 6*, we discuss the tool, our results, the optimization of the algorithm, and perspectives for future research. Our conclusions are set out in *section 7*.

It should be noted that the present manuscript provides examples of what can be achieved using geo-informatics and theoretical modelling. The actual use of PoleSat_2018 for decision support in territorial planning will not be presented or discussed here. Only the custom (commercial) version uses simulation to address specific, “real world” planning issues (*in December 2019, a poster on this topic was accepted for presentation at the MIE-2020 conference*).

1.1. Background, part 1: research on hospital systems and public health

Public health research considers the health of the population rather than the health of an individual [6]. *In France*, multidisciplinary hospital systems research [7, 8] focuses not only on fighting diseases but also on developing new scientific methods, analyses and tools that address the specific needs of healthcare professionals [9-14, 2, 15, 16]. The French public health medicine can be practiced inside or outside a hospital setting: inside, the goal is to improve the hospital’s administrative and scientific activities by developing skills in biostatistics, the spatial analysis of diseases, bioinformatics, medical informatics, epidemiology, medical information, medical archives, care organization, clinical research, care safety, hygiene, and so on [17]. Outside the hospital, public health activities are performed by various national or regional healthcare administrations (government ministries, the national biomedicine agency, regional health agencies (Agence Régionale de Santé), occupational health services, etc.), with a view to organizing care services and facilities and developing health policies. Moreover, public health activities are performed in other public- and private-sector organizations [17-19].

The territorial organization of healthcare is an important topic for *countries and organizations* worldwide. Over the last few years, various countries have performed health resource planning [20-25, 1, 26-30] with analytical methods and tools that have been adapted for use with specific organizational

1 structures, scientific viewpoints and cultural habits [31]. Various methods and tools based on geomatics,
 2 systems approaches, simulation modelling or hierarchical modelling (i.e. predictive modelling) have been
 3 introduced in order to focus and hopefully solve health public problems, including death on waiting lists in
 4 cardiology, drug expenditure, mental disability, the collection of blood donations, and the provision of
 5 maternity services [15, 32-43].
 6
 7
 8
 9

10 In France, awareness of territorial and hospital planning issues in both public- and private-sector
 11 hospitals has been raised by (i) the nationwide introduction of regional care plans [15, 44], (ii) descriptive
 12 maps for care supply and the reduction of health inequalities, and (iii) prospective organizational modelling
 13 for groups of diseases or high-priority medical specialties, and telemedicine [45]. In 2016, new healthcare
 14 legislation required public-sector hospitals to be organized into *groupements hospitaliers de territoires*
 15 (*GHTs/THGs*, territorial hospital groupings) [44, 46]. The members of a *GHT/THG* must share [45] IT
 16 resources, financial resources, equipment, staff, and patients. These processes have often triggered
 17 controversies or protests with regard to the closure of maternity units [21, 22, 29, 47-49].
 18
 19
 20
 21
 22
 23
 24
 25
 26

27 Consequently, geomatics has become an important digital tool for decision-making in the field of
 28 public health [14], such as studies of the urban environment and related health issues [50]. Furthermore, the
 29 emergence of geomatics has been coupled to the growth in open-source tools, services and databases, such
 30 as R statistical and graphing software [51, 52]. In recent years, French hospitals and decision-makers have
 31 increasingly focused on innovative methods and tools which for the prospective, critical management of
 32 health resources [31, 53]. Health geomatics (also known as health geo-informatics, and defined in the
 33 ISO/TC 211 series of standards as the "discipline concerned with the collection, distribution, storage,
 34 analysis, processing and presentation of geographic data or geographic information") [54] is becoming a
 35 major scientific field in France, just as it is in Anglo-Saxon countries and French-speaking Canada [4, 13,
 36 34, 55, 56]. Health geomatics thus helps healthcare professionals to understand how people interact in a
 37 given environment and how health policy and planning can be designed and implemented accordingly; it can
 38 therefore make decisive contributions to public policy decisions and the management of healthcare
 39 institutions [4, 14, 30, 57-61]. The concept of spatial accessibility is of prime importance. A gravitational
 40 model of interaction (see section 1.2) can provide valid measures of spatial accessibility in both rural and
 41 urban areas [53, 62-65]. Enhanced gravitational models have attracted much interest for use in various health
 42 geomatics applications; they include two-step and three-step floating catchment area models [66-68], the
 43 compound gravity model, and the kernel density method [62].
 44
 45
 46
 47
 48
 49
 50
 51
 52
 53
 54
 55
 56
 57
 58
 59
 60
 61
 62
 63
 64
 65

1.2. Background, part 2: geographical concepts, systemics in healthcare, and the concept of interaction

The original model mentioned in the Introduction [2] must be considered in the context of a *neo-positivist, radical, behavioral view of geography* [69]. Knowledge about the organization of geographical space is gained through *concepts of movement, networks, nodes, hierarchies, and areas* [65, 70]. This “new” *geography* [71] has since generated novel *systems analysis* tools that provide a better understanding of *geosystems* (spatial organizations originating from the physical environment) and *socio-economic systems* (spatial organizations that arise from processes related to human activities, *i.e. geographical structures*). Spatial organization involves the analysis of not only structures but also dynamic, productive processes and mechanisms and the balance between physical and human systems.

As early as the 1960s, quantitative tools were used to analyze the spatial distribution of phenomena in terms of various characteristics: shapes, geometries, types of spatial models [72, 70], formal statistics, and mathematical models [73]. Thus, geography can be considered as "the science of distributions and models"; it highlights the importance of analyzing spatial organization² by using systems theory [74] from which spatial models³, structures, relationships and processes will be derived. These models may be dedicated to studies of movement, morphologies and distances (*i.e. concepts of interaction*), movement and areas (*i.e. the concepts of field and territory*), and movement and time (*i.e. the concept of diffusion*). This movement led to the definition of geographical space as "a social product because it results from the work that society organizes to achieve its objectives; each society has its own space. Space is a social dimension" [75].

In parallel with the creation of the “new” geography movement in the 1960s, systems analysis by non-geographers has developed considerably since 1945. Results are made intelligible through modelling; according to Valéry, “We only think in models”. Furthermore, Lemoigne wrote that “A complex system needs modelling to build its intelligibility” [76].

² The concept of “organization” expresses the existence of an order for (and interrelationships between) the parts or elements composing a set.

³The pioneers of “new” geography include Hägerstrand, W Isard., Bailly (1984), Claval (1984), Gould (1985), Capel (1981), Gregory (1985), Johnston (1987), Johnston and Claval (1984).

Modelling by analogy to Newton's law of universal gravitation

Modelling based on gravitational models was first performed for topics in economics (e.g. marketing and retail trade, by Reilly [77, 78], and was then taken up and developed by Anglo-Saxon geographers [65, 70, 79]. In France, Reilly's law of retail gravitation was applied to health planning in the 1990s. The scientific literature (and an unpublished report by Vigneron, 1994) (*see p. 173 in [2]*) [15, 80-82] demonstrated that "the general trend observed during movements" (of individuals, goods, etc.) is governed by the "shortest route" hypothesis (on foot, driving, etc.). Consequently, one must obligatorily confirm this hypothesis before applying a model based on Newton's law of universal gravitation. Thus, both geographers and economists (*see p. 174 in [2]*) [83] built *two applied models* (in the former *Nord-Pas-de-Calais* and *Languedoc-Roussillon* regions) of organizations for decision support in health planning. These models express (i) the existence of an order and (ii) interrelationships between the parts or elements *composing* a set. **In fact**, *the third model* is the one that we implemented in 2002 (as mentioned in the Introduction). We enhanced the model and validated it [2] for a non-mountainous region of France with a high road density - justifying the use of Euclidean distance.

Below, we provide a brief introduction to Newton's law of universal gravitation and Reilly's law of retail gravitation [70, 77, 78] (furthermore, a mathematical demonstration of Reilly's law can be found in the 2002 PhD thesis; *see p.176 in [2]*), and then describe the three above-mentioned health models (based on a gravitational law) applied to the French territory.

Newton's law of universal gravitation and Reilly's law of retail gravitation.

By analogy with the laws of physics, Reilly adapted Newton's law of universal gravitation (i.e. gravitational force is proportional to the product of two interacting masses, and inversely proportional to the square of the distance between them; described by Eq. 1 below) (*see p. 175 in [2]*) and applied it to the analysis of retail trade flows (Eq. 2 below, adapted for hospitals) [70, 77].

$$M_{ij} = P_i P_j (d_{i,j})^{-2} \quad (1)$$

where i, j are representative indices of two bodies i and j , $M_{i,j}$ is the interaction between the bodies i and j , $P_i P_j$ are the bodies' masses, and $d_{i,j}$ is the distance between them.

$$d_i x = \frac{d_{i,j}}{\left(1 + \sqrt{\frac{M_j}{M_i}}\right)} \quad (2)$$

1 where d_{ij} is the “point of equal attraction” (also referred to as the “balance point”) between two
 2 hospitals, i, j are representative indices of hospitals i and j , $d_{i,j}$ is the Euclidean distance between the two
 3 hospitals, and M is the hospital’s mass (represented by the number of hospital beds) at i or j .
 4
 5
 6
 7

8
 9 *Reilly’s law of retail gravitation: health planning applications in France.*

10 A **first** model based on Reilly’s law was applied in the former *Nord-Pas-de-Calais* region of
 11 northern France (Vigneron, 1994 p. 173 in [2]) [84]. The model **initially** used data on activity in the region’s
 12 **médecine, chirurgie, obstétrique** (MCO, medicine, surgery and obstetrics) departments, as recorded in the
 13 French national hospital discharge database (*programme de médicalisation des systèmes d’information,*
 14 *PMSI*) for 1992 [85, 15]. The main objective of this project was to develop a new method for defining and
 15 updating the regional’s healthcare organization.
 16
 17
 18
 19
 20
 21
 22

23 A *second gravitational model* was applied in the former *Languedoc-Roussillon* region [84] of
 24 southern France, with the objective of defining catchment area **maps in a statistical correspondence analysis**
 25 for all MCO specialties. However, this model of a mountainous region did not include the following factors:
 26 relief, infrastructure, and isochronous distance (travel times) [83].
 27
 28
 29
 30

31 *The third gravitational model was implemented in the 2002 PhD thesis;* in contrast to the first two
 32 *models*, it used a weighted version of Reilly’s law. The project had three main objectives: (i) to calculate the
 33 so-called “proximity catchment areas” for peripheral hospitals (other than university medical centers and
 34 similar establishments), (ii) to calculate catchment areas by medical specialty, rather than for pooled
 35 specialties, and (iii) to be applicable to both geographical areas with relief and those where the use of
 36 Euclidean distance is justified (i.e. on plains or on plateau areas with an average altitude of 200 m) *see p. 32*
 37 *in* [83]. **The version of Reilly’s equation used** the usual definitions of mass (the number of beds) and distance
 38 (Euclidean distance) but was modified by the adding of weighting from calculated populations using either a
 39 relative neighborhood graph (RNG) or a K-means **algorithm** (*see p. 118-132 in* [2]). This refined the model
 40 by better defining the area close to the hospital (i.e. *the concept of “proximity” to the hospital*) *see p. 11,*
 41 *301 in* [2] and *p. 5-16 in the supplementary data in* [86]. Firstly, the refined model is mathematically robust,
 42 as demonstrated in *phase one* of the cartographic observation of real, database-based hospital catchment
 43 areas (**see section 2.1.2**). Secondly, the weighting coefficient took account of other factors, including both
 44 in-hospital variables and external environmental, health-related and social variables. The equations for
 45
 46
 47
 48
 49
 50
 51
 52
 53
 54
 55
 56
 57
 58
 59
 60
 61
 62
 63
 64
 65

1 weighted populations (observed and theoretical) are given in section 2 (“*Methods: optimization of the*
2 *algorithm*”).

3
4 *Lastly, in the PhD 2002 thesis*, our geographical research on hospital systems was based on an
5 analysis of spatial practices by patients in the former *Nord-Pas-de-Calais region* of northern France (which
6 is relatively poor, with a high unemployment rate and a relatively young population of around 4 million
7 inhabitants [15, 84]), and on the development of a reference model of the target organizational structure
8 [71]. This enhanced, prospective model was applied to blood cancer cases and total hip replacements. The
9 scenarios simulated hospital creations, closures, and reorganizations. The resulting tool was semi-automated
10 (human expertise was still needed) and was coded in MATLAB® [87, 86] (see p. 350, 354, 397, 410 in [2]
11 and see section 2.1.3). Our four-step modelling process was developed and validated in the context of a
12 research project on the planning of hospital activities. In the following section, we explain certain details of
13 the modelling equations and then present the optimized model.

24 **2. Methods: optimization of the algorithm**

27 **2.1. An enhanced version of Reilly’s law of retail gravitation**

30 **2.1.1. The problem and the hypothesis**

31 Tools and processes for modelling hospital attraction have major value for healthcare planners; the impacts
32 of a given project can therefore be analyzed prospectively. The objective of the 2002 PhD project (*entitled*
33 *“Geography of spatial utilization of the health services: a Newtonian modeling of hospital catchment*
34 *areas”*) was to design and build an efficient tool for the observation, simulation and prediction of hospital
35 catchment areas in various medical fields. The study covered the former *Nord-Pas-de-Calais region* of
36 France (comprising four million inhabitants) [15, 84] and was fed with data on oncology/hematology and
37 traumatology-orthopedics care from the *PMSI* database [85]. Our geographical and mathematical model was
38 based on the proven hypothesis: “*use of healthcare is linked to the distance in km or in time*”. This
39 “*principle of least effort*” was expected to hold for peripheral/general hospitals (i.e. hospitals that are not
40 university medical centers).
41
42
43
44
45
46
47
48
49
50
51
52
53

54 **2.1.2. A four-phase model-building process**

55 We developed a four-phase process for the spatial modelling of health services use (see p.149,172, 180 in [2]
56 and the supplementary data in [86]). *Phase one* was a descriptive geographic study based on the catchment
57
58
59
60
61
62
63
64
65

1 area observed for patients with blood cancer and patients having undergone total hip replacement. After the
 2 starting hypothesis had been confirmed (*see p.152 in [2]*), *phase two* involved the implementation of a
 3 refined version of Reilly's law of retail gravitation. We used the usual weight parameter (i.e. the number of
 4 beds) and then added parameters based on the size of the calculated population in the study territory by using
 5 an *RNG* or K-means algorithm. In *phase three*, we compared the observed situations with those predicted in
 6 phase two by the theoretical model. This comparison was based on cartography and calculation of the
 7 coefficient of attraction (*CoA*). *Phase four* was dedicated to the spatial prediction of the *catchment area* by
 8 simulating reorganizational scenarios in which health **services** were opened, closed or *aggregated* (*see the*
 9 *supplementary data in [86] and also p.195 in [2]*).

10 Ultimately, the results of the comparison and simulation steps showed that our *refined* model was
 11 robust, reliable, and predictive. It provided us with better knowledge of the spatial use of specialist health
 12 services/hubs (e.g. blood cancer in the city of *Calais* and total hip replacement in the town of *Hazebrouck*)
 13 (*see the supplementary data in [86] and also p.248-249, 402 in [2]*).

2.1.3. Details of the modelling process in phase two

14 In *phase one*, the modelling process revealed the hospitals' real catchment areas, and the law of least effort
 15 was confirmed for non-university medical centers. In *phase two*, an enhanced (weighted) version of Reilly's
 16 law of retail gravitation was built to model the expected attraction (Eq. 3) and the observed attraction (Eq.
 17 4).

$$18 \quad d(H_i, b_{e(i,j)}) = \frac{d(H_i, H_j(x,y))}{1 + \sqrt{\frac{M_j * P_{ej}}{M_i * P_{ei}}}} \quad (3)$$

19 where $d(H_i, b_{e(i,j)})$ is the distance to the hospital H_i at the point of equal attraction $b_{e(i,j)}$, M_j , M_i
 20 are the hospitals' masses (i.e. the number of beds) and P_{ei} is the population of H_i estimated using the *RNG* or
 21 a K-means algorithm.

$$22 \quad d(H_i, b_{o(i,j)}) = \frac{d(H_i, H_j(x,y))}{1 + \sqrt{\frac{M_j * P_{oj}}{M_i * P_{oi}}}} \quad (4)$$

23 A variant for the observed model involves P_{oi} , the population of H_i based on the observed
 24 catchment areas for H_i , H_j (by postal code areas in the *PMSI* database).

The algorithm was semi-automated (*see p. 352 in [2]*), and thus still required human expertise to calculate the expected catchment areas with different variants, as shown in Fig. 1 [87], (*see p. 342-343, 347, and 359 in [2]*). An online link to the demonstration model for expected catchment areas is available [88].

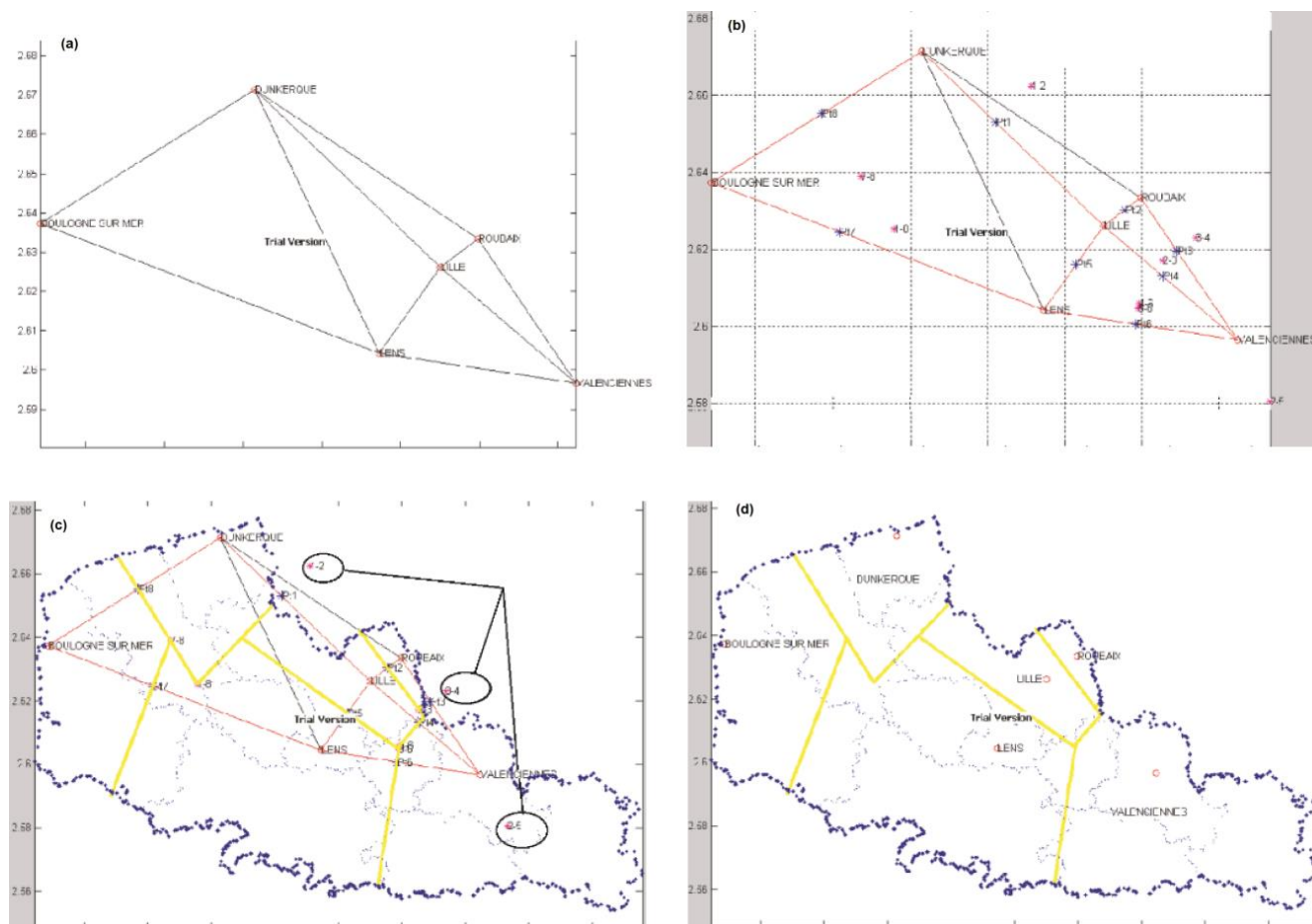


Fig. 1 An enhanced version of Reilly's law of retail gravitation, with weighting applied to the oncology/hematology activity in the former *Nord-Pas-de-Calais* region of France: (a) Delaunay triangulation (DT) of ten *black* segments and six hospital hubs; (b) a Gabriel graph showing eight red segments, balance points (*in blue*), and intersection points (*in pink*); (c) a plot of the perpendiculars (*in yellow*) and the expert assessment for three intersection points inside circles; (d) the estimated catchment areas (*in yellow*), P_{ei} : K-means, six hospital hubs and seven hospital services

2.2. Optimization of the algorithm, and automation based on the dominance rule

In the present study, we fully **optimized and automated** the algorithm (Fig. 1 **part c**). These features were mainly based on a heuristic method⁴ [89]: the dominance rule [90].

2.2.1. The dominance rule: step-by-step implementation

In *step a* depicted in Fig. 2, an Euclidean space [63] (*in black*) is defined; **it includes** a triangle (points A, B, and C, connected by red segments). **Step b**, contains all the **blue** perpendiculars and their intersections. Each plotted perpendicular divides the delimited space into two parts, and all the perpendiculars thus define the polygons. The red segments are not considered in the definition of polygons. *Step c* results in six differently colored polygons. In *step d*, the dominance ratio is calculated for the yellow polygon and the perpendiculars one to three. For perpendicular one, the *A/B ratio means that A prevails over B* because point A is on the same side as the yellow polygon, and so on. For the yellow polygon, one of the three ratios is finally selected as the most “dominant” one - i.e. the one that is not dominated by any other point. The process then continues iteratively for the other five **colored** polygons **seen in step c**. In *step e*, either no one point dominates the others or several dominant points are selected: **the fuchsia** polygon in question will be assigned to the nearest point or the heaviest point. Lastly, the set of polygons assigned to a point will be merged into a single polygon to represent the point’s (i.e. hub’s) catchment area.

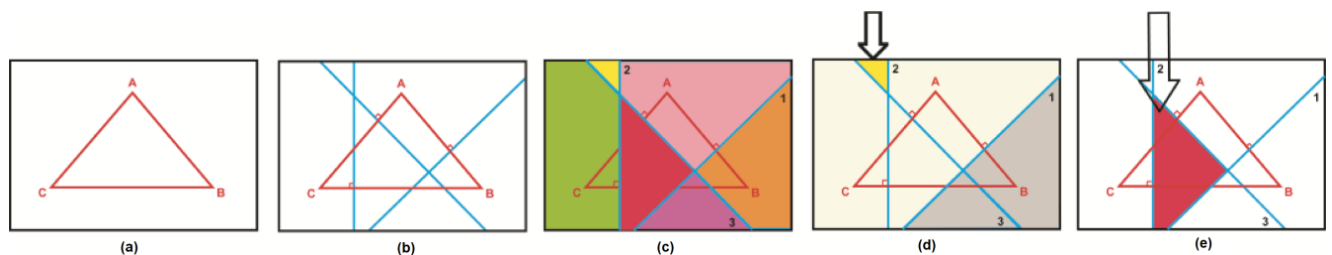


Fig. 2 Demonstration of the dominance rule, in five *steps*: (a) A Euclidean space (*in black*) includes a triangle, with three points A, B, C and three red segments (lines between two points); (b) each perpendicular (*in blue*) divides the space into two parts; (c) six differently colored polygons are obtained; (d) the dominance ratios for the yellow polygon: A/B (*i.e. A prevails over B*) \rightarrow perpendicular one, A/C \rightarrow

⁴ A heuristic method is a problem-solving method that is not based on a formal model and does not necessarily lead to a solution; it proceeds through successive evaluations and provisional hypotheses.

perpendicular three, C/B → perpendicular two; (e) the dominance ratios for the fuchsia polygon: A/B → perpendicular one, B/C → perpendicular two, and C/A → perpendicular three, resulting in a closed (endless) cycle: A/B/C/A

2.2.2. The dominance rule: application at the regional and national levels

The optimized algorithm was automated in the following way:

1. Only Delaunay triangulation (*DT*) is used [2, 91, 92] (see Fig. 3 part a).
2. A new function places the coordinates of the point of equal attraction (i.e. the balance points in Fig. 3) inside a matrix that maintains the "right order": i.e. the sequence in which the points of equal attraction are linked together and create the "right" polygon around a hospital "hub".
3. The weighting (P_{ei} : the territory's population) is based on a nearest-neighbors algorithm (a hierarchical, supervised learning algorithm) instead of a K-means algorithm (a non-hierarchical, unsupervised learning algorithm) [93].
4. In order to be able to apply our optimized algorithm at the national level (i.e. more broadly than the regional level), the studied territory is divided into two parts. The first part is an incomplete geometric proximity area referred to here as the "obvious area" (shown in purple around each hospital hub in Fig. 4). The second part corresponds to all the areas other than the purple obvious area, referred to as the "reduced area" (in gray, see Fig. 4 part c).
5. The dominance rule is used only on the reduced area (in gray in Fig. 4 part c) derived from calculation of the "obvious area" (in purple in Fig. 4 part a), in order to obtain all the final catchment areas attributed to each hospital hub (in Fig. 5 part d).
6. A dominance database is created for each of the 576 polygons (Fig. 3). It includes as many pairs of hospital hubs (points) as there are perpendiculars (46, see Fig. 3). The non-dominant hubs (referred to as wells), will be removed until the dominant hub is obtained for each polygon studied (1 to n). For a specific polygon with a cycle such as "A/B/C/A" (i.e. an endless loop, as in Fig. 2, step e), another dominance criterion must be used to allocate the said polygon to the "closest" or the "heaviest" hospital hub.

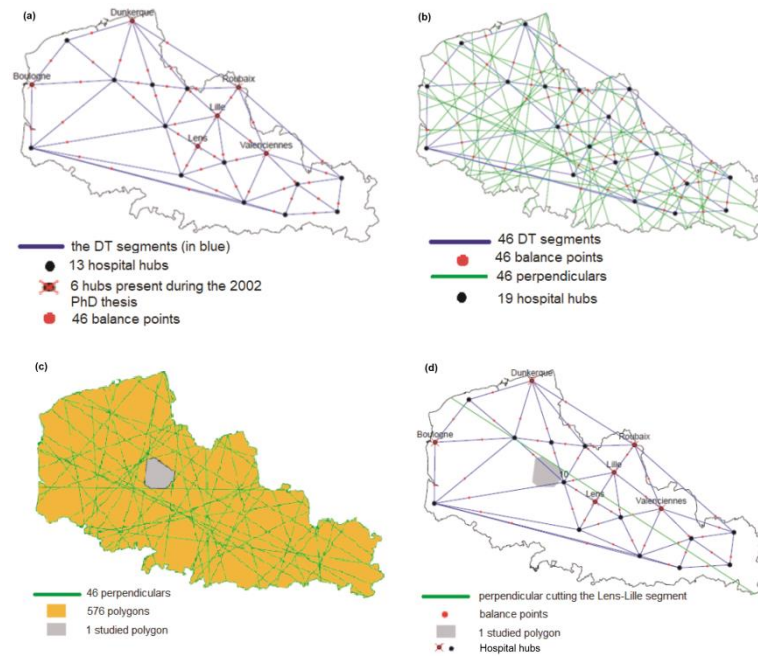
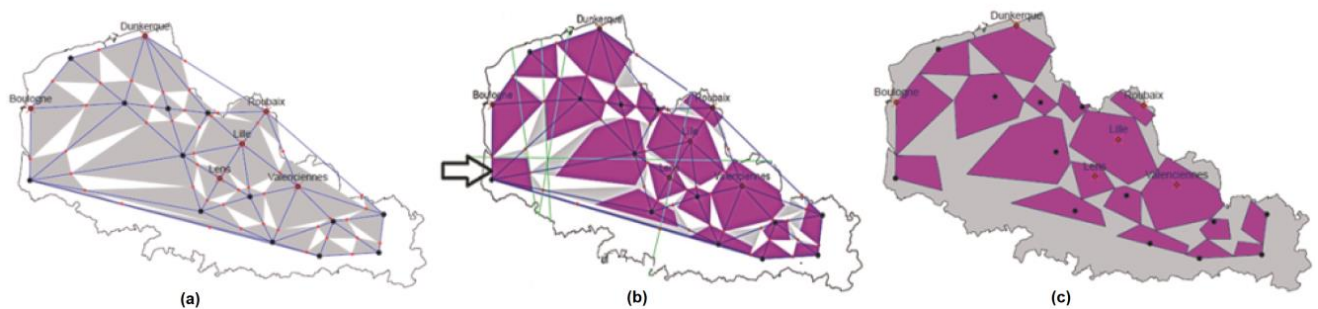


Fig. 3 The dominance rule, as applied in four *steps*: (a) the former **Nord-Pas-de-Calais** region, containing 46 *DT* segments (*in blue*); (b) 46 perpendiculars divide up the space (*in green*); (c) 576 resulting polygons (*orange and gray*); (d) a graphical dominance ratio for the gray polygon and the plotted perpendicular on the “*Lens-Lille*” segment: the *Lens* hub prevails over *Lille* hub. This polygon will have 46 dominance ratios (balance point numbers)

2.2.3. The obvious areas, the reduced area, and the dominance rules for the catchment area map

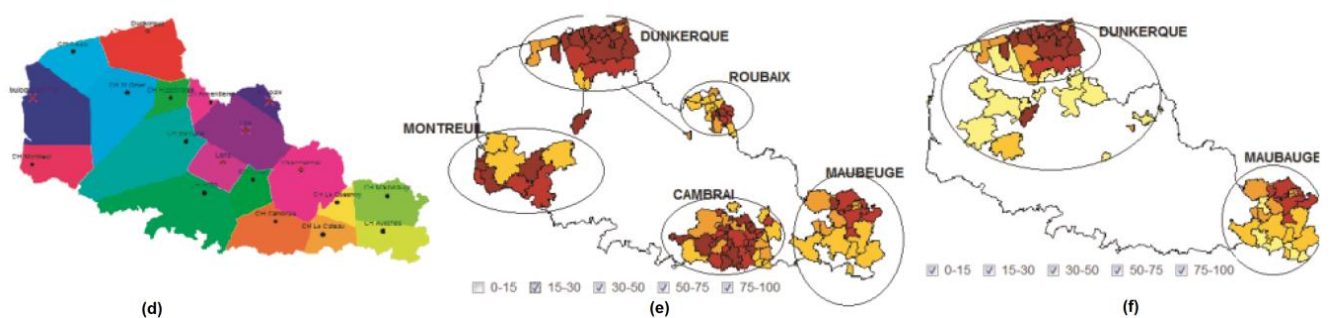
As shown in Fig. 4 *step a*, the gray polygons represent the real geometric shape and the unrefined hospital catchment areas. In Fig. 4 *step b*, the gray polygons are transected by perpendiculars (*in green*); only the “internal” parts (representing the obvious areas (*in purple*) are kept; the remaining polygons are “gray residues” or the polygons that are not inside the unrefined hospital catchment areas (*in white*). In Fig. 4 *step c*, the reduced area (*in gray*) is obtained by pooling all the gray and white polygons.



1 **Fig. 4** Obvious areas, in three *steps*: (a) the real geometric shape/unrefined hospital catchment areas (*in*
 2 *gray*); (b) the “obvious areas” (*an incomplete geometric proximity area, in purple*), e.g. the polygon
 3 indicated by an arrow; (c) the reduced area (*in gray*) formed by pooling all the *gray and white* polygons
 4 from *step b*
 5
 6
 7

8 **Below**, Fig. 5 *step d* shows the expected catchment area map with “unrefined boundary” polygons of
 9 different colors. It is important to note that the set of symbols used for hospital catchment areas on all output
 10 maps is selected automatically by the PoleSat program running in R, without taking account of cartographic
 11 semiology rules. Furthermore, a randomly numbered circle (a non-administrative ID number) is assigned to
 12 each hospital hub or group of hospital hubs (defined as a referring hub).
 13
 14
 15
 16
 17

18 **It should also be noted that** in Fig. 5 the results were validated by graphically (i) checking the
 19 contiguous shapes of the observed catchment area around the single hospital hub (*steps e, f*) and (ii)
 20 comparing the expected catchment area map with an “unrefined boundary” (*step d*) and observed catchment
 21 areas (*steps e, f*) using an additional anonymous database of oncology/hematology patients in the former
 22 Nord-Pas-de-Calais region. These checks were performed with a Shiny® application and several R
 23 packages (shiny, maptools, rgdal, sp, rconnect, rlang and data.table) [94]; **it should be noted** that in the
 24 Shiny® interface [94], Fig. 5 *steps e and f* can be generated by selecting **the following parameters**: “public”,
 25 “CH de Dunkerque”, and the three highest percentage classes (30-50, 50-75, and 75-100), in order to better
 26 observe the contiguous areas for each hub.
 27
 28
 29
 30
 31
 32
 33
 34
 35
 36
 37
 38
 39



40
 41
 42
 43
 44
 45
 46
 47
 48
 49 **Fig. 5** *Step d*: the expected catchment area map; *steps e and f*: the graphical validation steps
 50
 51
 52
 53
 54
 55
 56
 57
 58
 59
 60
 61
 62
 63
 64
 65

3. Methods: GUI settings and the optimized algorithm

3.1. The reduced area and the steps prior to application of a

dominance rule ($P6$, $P7$)

Before the dominance rule is applied to the resulting reduced area (*in gray*), it can be seen that some gray polygons in Fig. 4 *step c* have a very large surface area. In such a case, the area is divided into sixteen parts. These parts would be poorly assigned if the GUI's default setting value, "500,000,000 m²" ($P6$) is used (Fig. 6); the GUI is accessible. URL: <https://thymine.univ-lille2.fr/polesat2018/>; username: *demo3*; password: *polesat4*. Hence, small, insignificant polygons are deleted to avoid errors; the default parameter value is "1 m²" ($P7$). The resulting polygons are now relatively small.

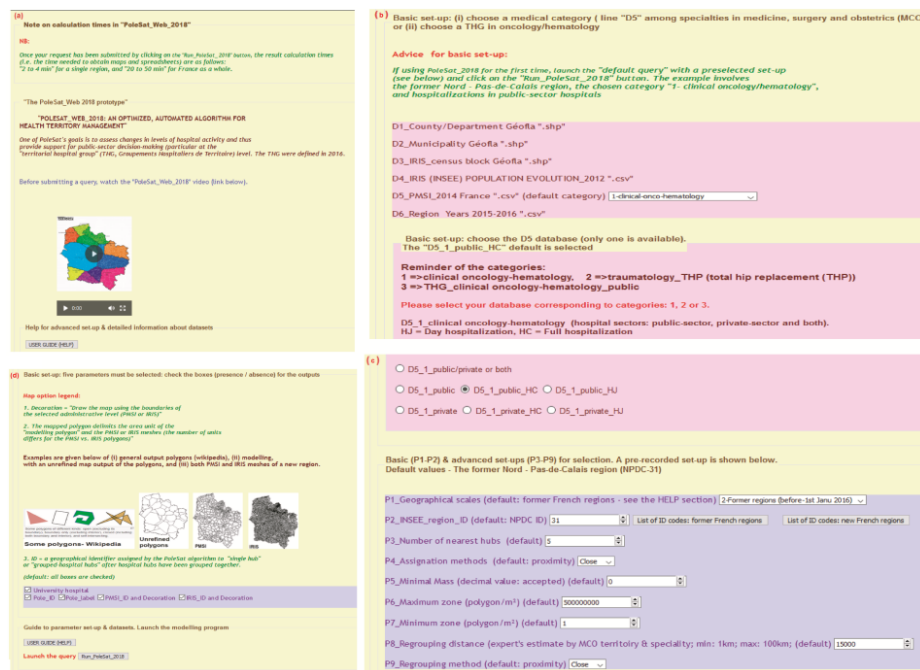


Fig. 6 GUI part a (top left), GUI part b (top right), GUI part c (bottom right), and GUI part d (bottom left); the GUI's URL: <https://thymine.univ-lille2.fr/polesat2018/>; username: *demo3*; password: *polesat4*

3.2. The reduced area and application of the dominance rule in three parts

Part one - Selection of the hubs nearest to each polygon to be closed in Fig. 4 *step c*; by default the parameter is set to 5 ($P3$). **Part two** - Creation of a B-box (a rectangle containing a set of points) from the five nearest hubs and each delimited "obvious area" (*in purple*) in Fig. 4 *step b and step c*. **Part three** -

Application of the dominance rule using the proximity option (presented as “Close”, the default option in the GUI) or the weight option (presented as “Heavy”) (P4, P9; see section 3.3). Each polygon (resulting from application of the dominance rule to the reduced area in gray) in the B-box will be attributed to a hospital hub (the same hub or different hubs). The B-box is reiterated for each polygon. Once the dominance rule has been fully applied, the dominant hub receives all its attributed polygons.

3.3. The iterative grouping processes (P4, P9)

3.3.1. Grouping by proximity: “Close”

The closest hospital hub couples are selected (i.e. with a distance below the value set in the model) and merged. The hospital hub with the greatest weight is retained, and the hospitals’ geographic coordinates are averaged.

3.3.2. Grouping by weight: “Heavy”

In order to find the “heaviest” hubs, the hubs are ranked in decreasing order of weight. Once the heaviest hub has been determined, it is merged with other hubs or single hospitals located within a defined distance radius. The names and coordinates of the heaviest hubs and single hospitals are recorded.

3.4. The optimized algorithm’s graphical workflow

A summary workflow in several hierarchical steps is given in Fig. 7. As a consequence, modification of the GUI’s default and advanced settings in PoleSat_2018 allows users/experts to model hospital catchment areas by calling its algorithm.

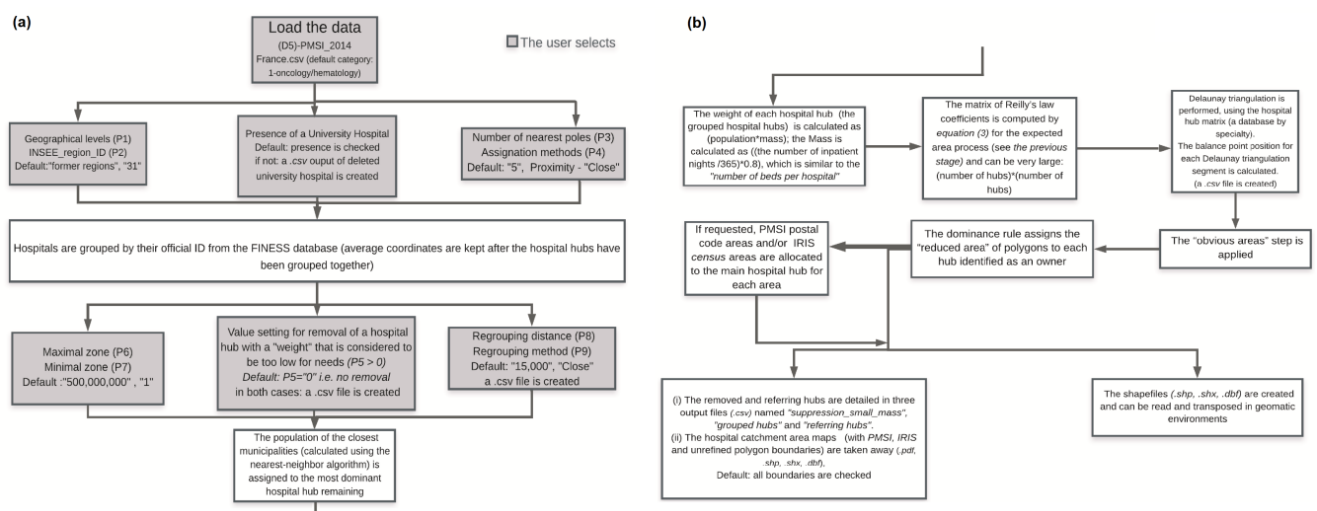


Fig. 7 A detailed graphical workflow for the optimized algorithm, linked to the GUI’s settings

Also see for more details Figs. 6 in section 3.1; sections 5.2.1 and 5.2.2, the PoleSat_2018 user guide in [95], and the supplementary file “Online Resource 1”.

4. Materials - databases

4.1. Medical and geographic databases

4.1.1. The databases used by PoleSat_2018

The demonstration version of PoleSat_2018 requires several national databases, most of which are derived from (i) the 2014 PMSI database [85, 96], which corresponds to an anonymized summary of aggregate hospital activity (i.e. hospital stays) based on two medical specialties: traumatology/orthopedics (which includes total hip replacement) and oncology/hematology (which includes blood cancer); and (ii) the *fichier national des établissements sanitaires et sociaux (FINESS*, a database of geographic identifiers for health establishments) [97], from which the establishment’s geographic location was retrieved.

The GUI’s default request covers 8,711 hospital stays for only one region [44, 84] (according to the “D5_1_public_HC” sub-dataset of full hospitalization in oncology/hematology). The user can only select the PMSI databases and sub-datasets (private, public coupled to full or day hospitalization) and administrative correspondence tables but cannot see or download the PMSI databases; further descriptions are given inside the GUI (see Fig. 6) and its reference data [95, 98].

The input PMSI file structure inside the GUI contains the following variables of relevance: the hospital’s geographic identifier, the hospital’s official ID, the type of hospital stay, an anonymous output summary number, the number of nights in hospital, the hospital’s official name, the code for the French region prior to the reorganization, the county code, the hospital category label and ID, the FINESS cartographic coordinates, and the code for the French region after to the regions’ reorganization.

4.1.2. The database related to the validation step

A more detailed PMSI database was used during optimization to validate phase one (Fig. 5). This covered the real spatial movements of patients attracted by each hospital hub at the PMSI-aggregated geographical level; hence, it is not considered to be an anonymous database; that why it is not included in PoleSat_2018 (server) and cannot be accessed through the Shiny® online demonstration of the validation step [94].

5. Results

Below, we first present the *GUI* and then show the modelling results in oncology/hematology for (i) a “default simulation” (basic modelling) process and (ii) an “advanced second-order simulations” modelling process for the former Nord-Pas-de-Calais region [84].

5.1. The GUI’s features (PoleSat_2018)

The *GUI* in Fig. 6 was designed for both basic users and advanced users. Basic users are shown a video before they submit the default query with preset parameters. For advanced users, set-up assistance is included in the *GUI*’s help file, and so the settings can be fine-tuned to reflect the expert users’ needs and their knowledge of territorial planning issues (see section 3.4) [95, 99].

5.1.1. The GUI’s main features

(i) A method for geometric and geographic analysis, (ii) modelling of hospital hub catchment areas with regard to hospital hub aggregations/closures (by medical specialty), (iii) several geographic levels, including former and new French regions, *GHTs/THGs* [44, 84], and the whole of France, (iv) short processing times for French regions (including analyses at the *GHT/THG* level) and longer processing times for France as a whole (less than an hour), (v) immediate access to individual results: unrefined maps, maps showing *PMSI* boundaries or *ilots regroupés pour l’information statistique (IRIS) census* area boundaries, numerical results, and the output result files at the end of the computation process (in a .zip file).

5.2. Simulations

5.2.1. The default simulation (basic modelling): hospital groupings

The default simulation process (basic modelling) is shown in Fig. 8 and Table 1; it includes 28 hospital supply hubs, a grouping of eight hospital hubs (by assignation to referring hospital hubs), and a final number of twenty referring hubs. The output maps were displayed with “*PMSI*” and “*IRIS*” map boundaries. The main *GUI* settings are: *P1*: former regions; *P2*: 31 (the region code given by the *Institut national de la statistique et des études économiques (INSEE)*, the French national institute of statistics and economic studies); *P5*: 0; *P8*: 15 km, with vs. without one or more university medical centers.

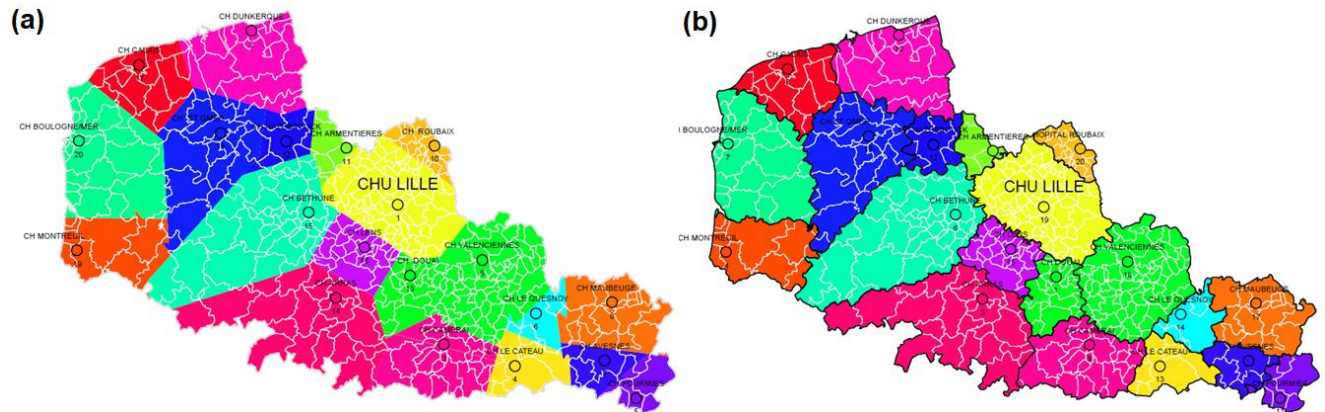


Fig. 8 The default simulation (basic modelling) process with hospital hub groupings (left (a) panel: the unrefined map; right (b) panel: the revised map with *IRIS* census area boundaries in black); the *GUI* settings are: $P1$: former French regions, $P2$: 31, $P5$: 0, $P8$: 15 km, with the presence of one or more university medical centers

Table 1 Assignment of *Seclin* General Hospital to the *Lille* University Medical Center grouping (region ID =31), in an extract of the default simulation (basic modelling) process (a grouping of eight single or grouped hospital hubs)

Number	Referring hospital hub <i>FINESS ID</i>	Hospital hub <i>FINESS ID</i>	Hospital hub name	Day number	Mass ($P5 = 0$)
1	590780193	590780193	CHU-Lille	22,278	48.8
2	590780193	590780227	CH-Seclin	1,529	3.35
3	590781415	590781415	CH-Dunkerque	4,422	9.69
4	590781605	590781605	CH-Cambrai	2,050	4.49
5	590781621	590781621	CH-Cateau	539	1.18

5.2.2. The advanced second-order simulations: hospital removals and

groupings

The *advanced second-order simulations* in Fig. 9 and Table 2 (comprising 28 hospital supply hubs) is based on the first part of the process (the removal of 11 hospital hubs with a mass < 2) and the second part of the process (the grouping of three remaining hospital hubs within a radius of 15 km into 14 final single hubs or grouped hospital hubs). The output maps are displayed with *PMSI* and *IRIS* map limits. The main *GUI* settings are: $P1$: former French regions; $P2$: 31; $P5$: 2 (i.e. select hubs with mass < 2); $P8$: 15 km, with vs. without one or more university medical centers.

Table 2 The removal of eleven hospital single hubs in the advanced second-order simulations. *Region ID* =31, in the first part of the process

Number	Hospital hub <i>FINESS ID</i>	Hospital hub name	Day number	Mass ($P5 < 2$)
1	590780052	CH-Somain	312	0.683
2	590781621	CH-Le Cateau	539	1.181
3	590781662	CH-Fourmies	656	1.437
4	590781670	CH-Le Quesnoy	325	0.712
5	590781795	CH-Avesnes	327	0.716
6	590782207	CH-St- Amand-les-Eaux	381	0.835
7	590782439	CH-Wattrelos	355	0.778
8	590782645	CH-Bailleul	203	0.444
9	590782652	CH-Hazebrouck	839	1.838
10	620100677	CH-Henin-Beaumont	176	0.385
11	620103432	CH-Montreuil/Mer	905	1.983

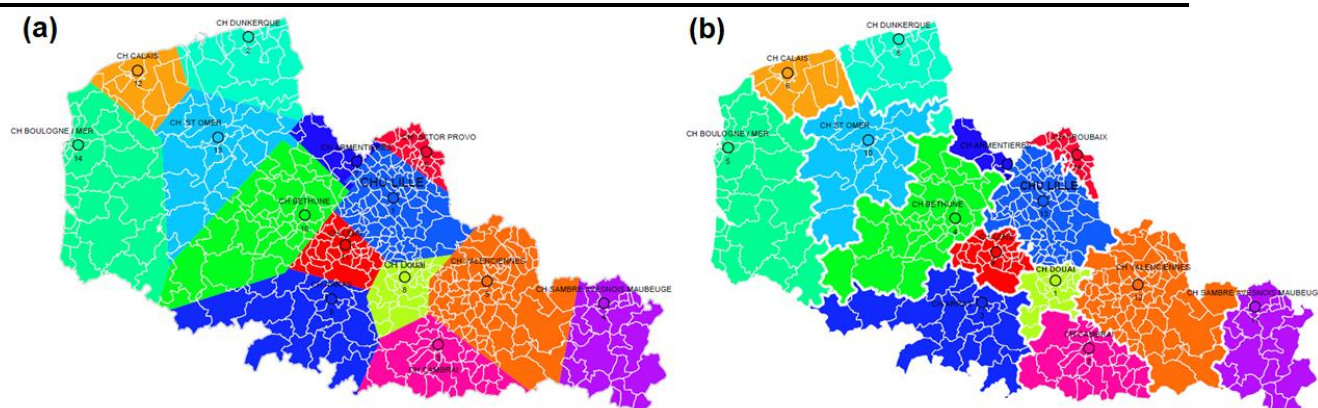


Fig. 9 The advanced, second-order simulations (the second part of the process), with the closure and grouping of hospital hubs (left (a) panel: the unrefined map; right (b) panel: the revised map with *PMSI* area boundaries in white); *GUI* settings: *P1*: former French regions, *P2*: 31, *P5*: 2 (i.e. select hubs with mass < 2), *P8*: 15 km, with the presence of one or more university medical centers

6. Discussion

6.1. PoleSat_2018's main outputs

6.1.1. The resources produced (maps and tables)

The demonstration version's user-friendly *GUI* and use of an optimized algorithm with R software (Fig. 6) provide a quasi-instantaneous, strategic visualization for people who are not experts in geomatics (thanks to ready-to-use maps and spreadsheets), in-depth views and analyses as part of a geographic information

1 system (thanks to a .zip file containing other files in a format suitable for use in geomatics), and improved
 2 graphical presentations (redrawn, corrected maps and legends). The computation time depends on the
 3 geometry of the territory studied, and so may be shorter or longer than that quoted in our results (around 50
 4 minutes for the whole of France).

6.1.2. Default and advanced simulations

10 Hospital catchment areas can be simulated by aggregating hospital hubs (*the default simulation*) or by
 11 closing and aggregating hospital hubs (*advanced second-order simulations*). Launching the *default*
 12 simulation for the former *Nord-Pas-de-Calais* region produced the maps and spreadsheets for verification
 13 and adjustment (see Fig. 8 and Table 1). If the closure of a hospital hub is preferable after the default
 14 simulation output values have been checked (as in our “advanced second-order simulations” examples),
 15 several hospital hubs will be removed by setting the hospital hub mass $P5$ to 2 (*i.e. the algorithm will*
 16 *remove all hospital hubs with a mass < 2*) and requiring the remaining hospital hubs to satisfy the $P8$
 17 condition (15 km), (*i.e. hospital hubs with minimum masses will be grouped together and assigned to*
 18 *referring hubs*) see Figs. 6 and 9, and Table 2. Consequently, the closure and/or aggregation of hospital hubs
 19 and sectors of activity would only be officially adopted by experts after an in-depth analysis of the objective,
 20 detailed, clearly analyzed results (ready-to-use maps and tabular data).

21 It should be emphasized that the simulation for each chosen medical specialty was performed for
 22 the former *Nord-Pas-de-Calais* region; the resulting polygon shapes and hospital hub catchment area
 23 boundaries would be different if the simulation is performed for the new French region (the *Hauts-de-*
 24 *France* region: see section 5.2) [99, 100].

6.1.3. Summary

25 The analytical level must be chosen as a function of the decision-maker’s initial problem and with full
 26 knowledge of the background situation: *i.e. this knowledge may be based on public health problems, past*
 27 *healthcare planning, and the healthcare establishment’s distribution (health care supply and demand,*
 28 *demographic factors, etc.)*.

29 Other results can be obtained easily by changing the settings (the new French regions, the
 30 *GHTs/THGs*, the whole of France or just part of the country, the presence or absence of university medical
 31 centers). If no grouping of an initial hospital hub supply situation is required (*i.e. "a negative grouping"*), $P8$

is set to the minimum value of 1 km. If a simulation with a "positive grouping" only is required, $P8$ can be set to 25 km, *etc.*

These modelling scenarios show that PoleSat_2018 is a flexible modelling tool with to be relevant in several planning topics; consequently, with the help of the ready-to-use outputs (map and table), other simulations of closing or merging hubs (by specialty) can be easily imagined by changing parameters according to the needs of health planners.

6.2. Optimization of the algorithm

Given that the field of health geography was not well known among hospital-based researchers in France, we have had to stimulate interest PoleSat by highlighting the value of our prospective model for planning. It was not until long after 2002 that the changing context of hospital systems research prompted the uptake and optimization of our model with its full automation (in 2016) and integration into a web-based GUI (in 2018).

6.2.1. A summary of the algorithm's novel features and limitations

In the 2002 PhD thesis, the observed patient distances and other statistical indices (see p. 155-171, p. 308-329 in [2]) presented at regional and local levels for oncology/hematology were calculated on an aggregated database coupled with area-patient IDs (see p. 343 in [2]). However, the key idea behind a new prospective tool was modelling the observed hospital catchment area for a given medical specialty and without being dependant on detailed patient data. This is how a novel, four-step, complete modelling process was applied to the former Nord-Pas-de-Calais region with two specialties: blood cancer (an infrequent disease with burdensome treatments) and total hip replacement (a more common but still burdensome orthopedic procedure).

The enhanced version of Reilly's law of retail gravitation: for a geographer, it was obvious to adapt Reilly's law by weighting it for the population in the study territory. Consequently, the model is more robust, more reliable, and more predictive. The weighting was easier to calculate with the K-means algorithm than with the RNG and because it was performed with a good level of statistical power on a large number of hospital hubs (those performing total hip replacements) (see p. 407, 423 in [2]).

The comparison in phase three was essential for validating the model, and so our enhanced model served as a prospective, digital, support tool for detecting and explaining other causal factors for hospital attraction when high negative values (<1 , such as 0.640) or high positive values (>1 , such as 1.304) were found (see p.359 in [2], and p. 17 in the supplementary data in [86]).

1 **Lastly, we validated** our model because we observed **(i)** (in *phase one*) proximity-based catchment
 2 areas for all the peripheral hospital hubs (i.e. all establishments other than university hospitals (*see p. 354-*
 3 *361 & p. 389-398 in [2]*, and *see the supplementary data p. 8-16 in [86]*), and **(ii)** we calculated the level of
 4 agreement between the calculated and observed models for blood cancer and total hip replacement.
 5
 6

7 *Hospital-based research and public health needs addressed by the new method and model.* The
 8 **research underlying the 2002 PhD thesis** took place at a time when very few forward-looking spatial analysis
 9 models had been applied to healthcare. Despite greater needs for health data analysis with available,
 10 accessible datasets, digital mapping and spatial analysis were poorly developed in the French hospital sector.
 11 In contrast, theoretical models had been applied in many other fields (economics, urban planning, marketing,
 12 etc.). At the same time, the French hospital-based researchers wanted to provide healthcare professionals and
 13 decision-makers with more effective, scientific tools [45].
 14
 15

16 *The model's main limitations in 2002.* The use of Euclidean distance was initially justified (*see p.*
 17 *67 in [2], [83]*) but was not suitable enough for mountainous areas; isochronous distances based on road
 18 travel times would have been preferable. Other causal factors - including those related to our border region –
 19 could have been considered. The models were semi-automated, and based on MATLAB® [87]; (**see section**
 20 *2.1.3*). Due to *limited access to databases*, the four-step modelling process was only applied to the former
 21 *Nord-Pas-de-Calais* region.
 22

23 **6.2.2. The optimized algorithm, automation, and the GUI**

24 ***Advantages and novel features***

25 A new version of PoleSat_2018 has been implemented with the same two medical specialties (for easier
 26 comparison with the 2002 PhD thesis [2, 88]) and extended to the **French national level**.
 27

28 1. *Differences in the equation used in phase two of the process.* To completely automate the process,
 29 we had to choose one of the two algorithms used to weight the population. Initially, the *RNG* (rather than *K-*
 30 *means* algorithms) was chosen as the weighting method, by linking points in a stepwise process.
 31

32 2. *Differences with regard to automation of the modelling process –phase two.* *The implementation*
 33 *processes.* The initial algorithm [87, 88] appeared to be simple but many questions and problems had to be
 34 overcome when choosing DT and the algorithm for processing at different geographic levels. Only DT is
 35 used in the optimized algorithm; in contrast, a Gabriel graph was used after an initial DT step in the 2002
 36 version (*see the demonstration in [88] and p. 113-115 in [2]*). **This change was** made for two reasons.
 37
 38
 39
 40
 41
 42
 43
 44
 45
 46
 47
 48
 49
 50
 51
 52
 53
 54
 55
 56
 57
 58
 59
 60
 61
 62
 63
 64
 65

1 *Firstly*, a hospital hub is linked to at least three other hubs. This contrasts with the Gabriel graph [101, 102]
 2 in which the hospital hub is sometimes connected to only one other hub (the algorithm needs to determine
 3 hospital catchment areas but this is impossible with a single connected hub). *Secondly*, the presence of fewer
 4 interconnected hubs poses a problem for application of the dominance rule. For France, more than 1,000 DT
 5 segments and perpendiculars were obtained. With tens of thousands of polygons as a result, the calculation
 6 would require too much time and memory. Reducing the space taken into account (using the dominance rule
 7 on the reduced areas) was thus unavoidable. *Consequently*, the “*obvious area*” method was used to divide
 8 up the whole of France without creating artificial boundaries (i.e. regional territories or after division of the
 9 space into polygons) that would have made catchment areas obsolete. To this end, it was necessary to check
 10 and place the balance points and hospital hub positions in the right order to obtain the right purple polygons
 11 Fig. 4, *steps a to c*. This was made possible by sorting the numbered hubs. An added constraint concerned
 12 the inclusion of hospital hubs inside or outside the “obvious area”.

13
 14
 15
 16
 17
 18
 19
 20
 21
 22
 23
 24
 25 3. *The validation step and visual comparison (phases one and three)*. *Firstly*, our observations of
 26 contiguous shapes around the hub and a visual comparison of the expected and observed catchment areas are
 27 acceptable relative to the areas observed in Fig. 5 *step d*, *step e* and *step f* (notably relative to contiguous
 28 areas around hubs, as in the contiguous area for Dunkerque Hospital shown inside the circle in Fig. 5 *step e*)
 29 and validated the algorithm. *Secondly*, and as in the 2002 PhD thesis, some exceptions were found, i.e.
 30 where the observed attraction was greater than expected for the proximity (Fig. 5 *step f*) in specific situations
 31 (with a small number of hematologists and a high degree of specialization for certain rare diseases *in our*
 32 *region*). *Consequently*, empirical limitations were applied (*see p. 218, 413 in [2]*), such as threshold values
 33 below 10%-15% for the number of hospital stays and below 5% for patients associated with hospital stays
 34 (in oncology/hematology services). Our Shiny® application provides a visual check on exceptions: greater
 35 attraction than would be expected locally, or attraction in noncontiguous areas (i.e. outside the proximal
 36 area) [94].

37
 38
 39
 40
 41
 42
 43
 44
 45
 46
 47
 48
 49 4. *Geography and geometry*. The results for non-planar, *noncontiguous* areas (i.e. areas with
 50 mountains and lakes) will requiring careful interpretation in future research, until a specific adaptation can
 51 be developed.

52
 53
 54
 55 5. *The GUI*. In 2017, a new online, web-based *GUI* replaced the original Tcl/Tk graphic interface
 56 running on a Linux system. PoleSat_2018 now allows experts to easily model hospital catchment areas by
 57 calling an algorithm programmed in R. PoleSat_2018’s algorithm enables the easy, rapid computer
 58
 59
 60
 61
 62
 63
 64
 65

modelling of hospital aggregation and/or closures. On average, health resource planning scenarios are obtained in less than three minutes (for the former *Nord-Pas-de-Calais* region) or less than 45-50 min (for France as a whole); this provides a quasi-instantaneous, strategic visualization of hospital hub catchment areas.

Limitations

1. *Limitations of the algorithm.* We did not have enough time to implement the “isochronous distance” as an alternative to Euclidean distance (justified on p. 32 in [83]) start automating phase three, with calculation of the CoA.

2. *Limitations of the GUI.* Feedback on the demonstration version suggested that it was relatively easy to use with 9 parameters. Hence, the custom version only displays four relevant (*P1, P2, P5 and P8*) pertinent parameters for specialist users; the other parameters are hidden and are always used in background by the algorithm.

3. *Limitations of the databases.* The databases were extracted from the 2014 *PMSI* database [85] (see the Acknowledgments) and filtered, aggregated in order to obtain hospital stay/day datasets for only the two chosen activities per establishment. At this level of aggregation, the data is considered to have been anonymized; so the dataset can be disseminated and reused in an outside system. However, our data samples did not belong to us; we were not authorized to disseminate them to other people or institutions.

It should be noted that our access to a detailed database (including spatial patient IDs) was limited to the former *Nord-Pas-de-Calais* region. The implementation of phase one was separate from our main program (running in R), which is related to the current modelling process called by the *GUI*.

6.3. Perspectives

The study territory was recently extended from one region to the whole of France; this is likely to broaden the algorithm's applications and enable scientific improvements in the future. Furthermore, the databases have been integrated into the *GUI*, and public and private databases have been gathered together. Since dissemination of the demonstration version of PoleSat_2018 is managed by the company Altense Consulting, this tool could be directly promoted in the scientific literature or indirectly promoted through usage.

Despite greater restrictions on access to health data in France since 2016 [46, 103, 104] (due to French legislation and the European general data protection regulation (GDPR)), the usage of the custom

version of PoleSat suggests that access to aggregated, anonymous input data will not be a problem for users outside government ministries.

In the **near** future, tests are likely to be extended to other *PMSI* domains (*MCO*, follow-up and rehabilitation care, psychiatry, home care etc.) [44] for longer periods (rather than a single year), and will include other large, embedded, **reusable** medical datasets.

By using authorized aggregated datasets and specialist knowledge on healthcare issues, scientists will be able to carry out retrospective studies. For example, it will be possible to check whether PoleSat's algorithm is able to find current hospital catchment areas after hospitals have been opened, closed and/or reorganized in real scenarios.

Lastly, there will be novel opportunities for testing hypotheses in the custom version of PoleSat, which circumvents the **PoleSat_2018** *GUI*'s current limitations. In fact, the *GUI* does not currently include options for creating hospital services/hubs, closing services/hubs or transferring an activity from one service/hub to another. Hence, starting from a given (input) **standard** database, one creates **two** additional **datasets** with values that are modified to simulate (for example) (i) "hub removal" and (ii) "hub removal with transfer" of its **activity from one hub to another**. Once the modelling results for each **scenario** have been obtained, they allow new "population and/or hospital activity" indicators to be calculated in PoleSat's "output.csv" files (in December 2019, a poster on this topic was accepted **for the MIE-2020** conference).

The PoleSat algorithm can be generalized to other fields. Developments in engineering science, computer science and medical imaging are under consideration: (i) the integration of PoleSat into a biostatistics, informatics and complex systems platform for assessing the connection count and scalability, and (ii) integration of the observed catchment areas (*phase one*) and automation of the *CoA* (*phase three*). **The current structure** of the required input files (see **section 4.1.1**) will ultimately enable the database owner to upload other types of health database (i.e. other than *PMSI* databases), as confirmed by the French Ministry of Health after an initial test. In other words, addition development will not be performed as part of the PoleSat program because the file structure is appropriate and can be generalized to other types of health database (described in the poster accepted **for the MIE-2020** conference).

7. Conclusion

Our main objective has been achieved, since the proposed deterministic, *non-probabilistic* method [105] (based on obvious areas and application of a dominance rule) enabled complete automation and stabilization

of the optimized algorithm (i.e. the same result for the same request). Furthermore, the new implementation complied with the main perspectives set out in the 2002 PhD thesis.

Via PoleSat_2018, our other objectives were to provide a user-friendly, easily configured environment and to help experts launch hospital simulations (with hospital hub groupings, closures and, lastly, with transfers).

Two versions of the PoleSat tool have been available since June 2019: the PoleSat_2018 demonstration tool (as presented here) and “the PoleSat_2019 custom (commercial) version” mentioned in the Perspectives. The latter custom version is likely will meet the modelling needs of the French Ministry of Health (the MIE_2020 poster); it should be more relevant to their needs because (i) it is based on an enhanced gravity model that takes account of a given territory’s true population, and (ii) it takes into account of each establishment’s level of activity (i.e. mass) and not just its distance from patients.

Consequently, PoleSat_2018 (primarily its custom version) will evolve towards *GDPR* compliance and could be generalized as a decision support tool for strategic planning.

Appendix

Abbreviations

Graphical user interface (*GUI*), *Groupement hospitalier de territoires* (*GHT*, *THG* territorial hospital grouping), *Médecine, chirurgie, obstétrique* (*MCO*, medicine, surgery and obstetrics), *Programme de médicalisation des systèmes d’information* (*PMSI*, the French national hospital discharge database, used for diagnosis-related group-based billing), Relative neighborhood graph (*RNG*), Coefficient of attraction (*CoA*), Delaunay triangulation (*DT*), *Ilots regroupés pour l’information statistique* (*IRIS*, administrative census area boundaries), *Fichier national des établissements sanitaires et sociaux* (*FINESS*, a database of geographic identifiers for health establishments), *Institut national de la statistique et des études économiques* (*INSEE*, the French national institute of statistics and economic studies), General data protection regulation (*GDPR*).

Computing: file extensions

Hypertext markup language (*.html*, *.htm*), Java Script (*.js*), Hypertext preprocessor (*.php*), In computing, a file that records events (*.log*), An archive file format (*.zip*), A comma-separated values file format (*.csv*), A shapefile format (*.shp*), A portable document format (*.pdf*).

Computing: **R environment packages**

#library(car): Companion to Applied Regression, *#library(deldir)*: Delaunay Triangulation and Dirichlet (Voronoi) Tessellation, *#library(dplyr)*: A Grammar of Data Manipulation, *#library(SDMTools)*: Species Distribution Modelling Tools, *#library(sp)*: Classes and Methods for Spatial Data, *#library(mgcv)*: Mixed GAM Computation Vehicle, *#library(geometry)*: Mesh Generation and Surface Tessellation, *#library(cccd)*: Class Cover Catch Digraphs, *#library(FNN)*: Fast Nearest Neighbor Search Algorithms and Applications, *#library(fields)*: Tools for Spatial Data, *#library(rgeos)*: Interface to Geometry Engine - Open Source ('GEOS'), *#library(sqldf)*: Manipulate Data Frames Using SQL, *#library(shiny)*: Web Application Framework, *#library(rsconnect)*: Deployment Interface **for Markdown Documents & Shiny®**, *#library(rlang)*: Functions for Base Types **&** Core and 'Tidyverse' Features, *#library(rgdal)*: Bindings for the 'Geospatial' Data Abstraction Library, *#library(maptools)*: Tools for Handling Spatial Objects, *#library(data.table)*: Extension of 'data.frame'.

Acknowledgments The authors wish to thank Patrick and Nicolas Staelen (*Altense Consulting, Landas and Levallois Perret, France*) for extracting data from the **2014 PMSI**, and Frédéric Albert (French Ministry of Health, Paris, France) for expert **information on the PMSI data**. The authors thank Professor Régis Beuscart, Professor Pierre-Jean Thumerelle, the **Lille Faculty of Medicine and University Medical Center** and Catholic University Medical Center of Lille for helping to fund research projects and **student fellowships**. **Authors' contributions** All authors helped to conceive and design the study. The materials were developed and the data were gathered, assessed and analyzed by Anne Quesnel-Barbet, Julien Soula, Mathurin Gamichon, Ismahane Ben Gayed, François Dufosse and Arnaud Hansske. The first draft of the manuscript was written by Anne Quesnel-Barbet and revised for critical content by all the other co-authors. The **second and third drafts** of the manuscript **were** written by Anne Quesnel-Barbet and Pierre Bazile and revised for critical content **and approved** by all the other co-authors. All authors have been made aware of and have approved Pierre Bazile's addition as a co-author.

Compliance with ethical standards

Conflicts of interest All authors declare that they have no conflict of interest. Intellectual property rights belong to Anne Quesnel-Barbet. Certain rights will be licensed to **universities**, with the maintenance of Anne Quesnel-Barbet's authorship rights in the future versions of PoleSat.

Ethical approval This article does not contain any studies with human participants or animals performed by any of the authors.

Funding This study was funded by Altense Consulting SA, the University of Lille, and *Groupement Hospitalier de l'Institut Catholique de Lille* (GHICL). Ismahane Ben Gayed and Mathurin Gamichon have received research grants (fellowships) respectively from Lille University Medical Center and Altense Consulting SA and from the University of Lille. GHICL paid for copy-editing of the manuscript. GHICL and Strasbourg University provided financial support for attendance at MedInfo 2019.

Availability of data and material Private access to the 2014 French national hospital discharge database (PMSI). Open data access to (i) the health establishment IDs (FINESS), (ii) to geographic and census data from the French national institute of statistics and economic Studies (INSEE). Computing: open source R environment (packages cited in the Appendix). Two online demonstrations: PoleSat_2018's GUI and the optimized algorithm's graphical validation step via a shiny® application.

Code availability PMSI, FINESS and INSEE are from software applications. The PoleSat program is only available as a demonstration GUI; a new version for actual planning will be issued soon.

References

1. Kruse FM, Stadhouders NW, Adang EMM, Groenewoud S, Jeurissen PPT (2018) Do private hospitals outperform public hospitals regarding efficiency, accessibility, and quality of care in the European Union? A literature review. *Int J Health Plann Manage*. <https://doi.org/10.1002/hpm.2502>
2. Quesnel-Barbet A (2002) Geography of spatial utilization of the health services: a Newtonian modelling of hospital catchment areas (Géographie des pratiques spatiales hospitalières dans la région Nord - Pas-de-Calais: un modèle gravitaire de calculs d'aires d'attractions hospitalières). Th. doct.: Quantitative geography, USTL Lille I, Villeneuve-d'Ascq (France). <https://ori-nuxeo.univ-lille1.fr/nuxeo/site/esupversions/d32ec0c5-af6d-4137-987b-a02fc2f99749>
3. Rinner C (2018) GS- 25 - Spatial Decision Support. The Geographic Information Science & Technology Body of Knowledge. <https://doi.org/10.22224/gistbok/2018.2.1>
4. Schuurman N, Leight M, Berube M (2008) A Web-based graphical user interface for evidence-based decision making for health care allocations in rural areas. *Int J Health Geogr*. <https://doi.org/10.1186/1476-072X-7-49>

- 1 5. Debacker M, Van Utterbeeck F, Ullrich C, Dhondt E, Hubloue I (2016) SIMEDIS: a Discrete-Event
2 Simulation Model for Testing Responses to Mass Casualty Incidents. *J Med Syst*.
3
4 <https://doi.org/10.1007/s10916-016-0633-z>
5
- 6 6. Lajarge É, Debiève H, Nicollet Z (2013) Les principaux acteurs et institutions en santé publique. *Santé*
7 *Publique*. En 12 notions. <https://www.cairn.info/sante-publique-en-douze--9782100585014-page-55.htm>
8
9
- 10 7. De Saint Pol E, Germain L, Heyraud G (2007) From public health training to professional practice:
11 student association and experience exchange. *Santé Publique*. <https://doi.org/10.3917/spub.070.0143>
12
13
- 14 8. Kivits J, Fournier C, Mino J-C, Frattini M-O, Winance M, Lefève C, Robelet M (2013) Jalons pour une
15 recherche interdisciplinaire en santé et en sciences humaines et sociales: apports d'un séminaire de
16
17 recherche. *Santé Publique*. <https://doi.org/10.3917/spub.135.0579>
18
19
- 20 9. Devos P, Dufresne E, Renard JM, Beuscart R (2003) SIGAPS: a prototype of bibliographic tool for
21 medical research evaluation. *MIE 2003*. <http://ebooks.iospress.nl/publication/20528>
22
23
- 24 10. Renard JM, Souf N, Kulik JF, Beuscart R (2000) Professional communication for coordination of care:
25 inter-mediation for a better management of patients. *MIE 2000 & GMDS 2000*.
26
27 <http://ebooks.iospress.nl/publication/18406>
28
29
- 30 11. Lamy JB, Tsopra R, Venot A, Duclos C (2013) A semi-automatic semantic method for mapping
31
32 SNOMED CT concepts to VCM Icons. *Medinfo 2013*. <http://ebooks.iospress.nl/publication/33954>
33
34
- 35 12. Ajmi I, Zgaya H, Gammoudi L, Hammadi S, Martinot A, Beuscart R, Renard JM (2015) Mapping
36 patient path in the Pediatric Emergency Department: A workflow model driven approach. *J Biomed Inform*.
37
38 <https://doi.org/10.1016/j.jbi.2014.12.004>
39
- 40 13. Quesnel-Barbet A, Soula J, Dufosse F, Sharma N, Ruhela A, Beuscart R (2013) POLESAT, an
41 innovative e-health geomatic platform in decision-making based on: Geographical approach, medical
42 knowledge visualization and geographic information system & web-mapping architecture. *IRBM*.
43
44 <https://doi.org/10.1016/j.irbm.2013.06.001>
45
46
47
- 48 14. Quesnel-Barbet A, Dufosse F, Souris M, Delerue D, Hansske A (2016) Géomatique en santé et
49 applications dans le nord de la France. *Techniques de l'ingénieur Electronique, robotique et TIC pour la*
50
51 santé. [https://www.techniques-ingenieur.fr/base-documentaire/biomedical-pharma-th15/electronique-
52
53
54
55
56
57
58
59
60
61
62
63
64
65](https://www.techniques-ingenieur.fr/base-documentaire/biomedical-pharma-th15/electronique-robotique-et-tic-pour-la-sante-42628210/geomatique-en-sante-et-applications-dans-le-nord-de-la-france-med4000/)

- 1 15. Quesnel-Barbet A, Nuttens MC, Aublet-Cuvellier B, Warembourg H, Prat A, Thumerelle PJ, Beuscart R
2 (2005) Modelling a regional reorganization of cardiovascular surgery provision. Health Place.
3
4 <https://doi.org/10.1016/j.healthplace.2004.06.007>
5
- 6 16. Misse C, Gilardi H (2011) La recherche biomédicale et en santé: la place des établissements de santé.
7 Gestions Hospitalières. [http://gestions-hospitalieres.fr/recherche-biomedicale-la-place-des-etablissements-
8 de-sante/](http://gestions-hospitalieres.fr/recherche-biomedicale-la-place-des-etablissements-de-sante/)
9
- 10 17. Bérard A (2007) Les médecins spécialistes de santé publique. Santé Publique.
11
12 <https://doi.org/10.3917/spub.070.0053>
13
- 14 18. Gautier S, Cousin S (2018) Médecine de santé publique : des carrières très variées: débouchés
15 professionnels possibles et rémunération. [http://www.remede.org/documents/medecine-de-sante-publique-
16 des-carrieres-tres-variees.html](http://www.remede.org/documents/medecine-de-sante-publique-des-carrieres-tres-variees.html). Accessed 15th November 2019
17
- 18 19. Pommier J, Grimaud O, Jabot F, Loncle P, Riffaud A, Schweyer F-X, Sherlaw W (2007) Pratiques,
19 métiers et formations de santé publique. Santé Publique. [https://cel.archives-ouvertes.fr/ACTE/hal-
20 02171409v1](https://cel.archives-ouvertes.fr/ACTE/hal-02171409v1)
21
- 22 20. Sommer A (2000) Restructuring French hospitals - Some problems and some solutions.
23 PharmacoEconomics. <https://doi.org/10.2165/00019053-200018001-00009>
24
- 25 21. Bizard F (2019) Un projet de loi santé à haut risque et qui manque sa cible en l'état.
26 [https://www.lesechos.fr/idees-debats/cercle/un-projet-de-loi-sante-a-haut-risque-et-qui-manque-sa-cible-en-
27 letat-999431](https://www.lesechos.fr/idees-debats/cercle/un-projet-de-loi-sante-a-haut-risque-et-qui-manque-sa-cible-en-letat-999431)
28
- 29 22. Catel visio, Centre de ressources et d'expertise en e-santé (2019) Groupements Hospitaliers de Territoire
30 - GHT: quels atouts pour l'innovation et la coopération territoriale ?
31 https://oxi90.com/OFUVBDF84/1BED6A8AB4AC485D97ACB86EEBEA3846_1.php
32
- 33 23. Curry RH, Rafferty MP, Huckaby SK, Johnson RB, Robitscher JW (1994) Public hospitals and managed
34 care. Journal of Health Care for the Poor and Underserved. <https://doi.org/10.1353/hpu.2010.0109>
35
- 36 24. Van Der Wal R, Bouthillette F, Havlovic SJ (1998) Recommendations for Managing Hospital Closure.
37 Healthcare Management Forum. [https://doi.org/10.1016/S0840-4704\(10\)61018-6](https://doi.org/10.1016/S0840-4704(10)61018-6)
38
- 39 25. Frossard M (1990) Hospital strategy and regional planning in France. Int J Health Plann Manage.
40 <https://doi.org/10.1002/hpm.4740050108>
41
42
43
44
45
46
47
48
49
50
51
52
53
54
55
56
57
58
59
60
61
62
63
64
65

- 1 26. Sobczak PM, Fottler MD, Chastagner D (1988) Managing retrenchment in French public hospitals:
2 philosophical and regulatory constraints. *Int J Health Plann Manage*.
3
4 <https://doi.org/10.1002/hpm.4740030104>
5
6 27. Bach S (1993) Health care reforms in the french hospital system. *Int J Health Plann Manage*.
7
8 <https://doi.org/10.1002/hpm.4740080304>
9
10 28. Sochalski J, Aiken LH, Fagin CM (1997) Hospital Restructuring in the United States, Canada, and
11 Western Europe: An Outcomes Research Agenda. *Medical Care*. [https://journals.lww.com/lww-](https://journals.lww.com/lww-medicalcare/Abstract/1997/10001/Hospital_Restructuring_in_the_United_States,.4.aspx)
12 [medicalcare/Abstract/1997/10001/Hospital_Restructuring_in_the_United_States,.4.aspx](https://journals.lww.com/lww-medicalcare/Abstract/1997/10001/Hospital_Restructuring_in_the_United_States,.4.aspx)
13
14
15
16 29. Longman J, Kornelsen J, Pilcher J, Kildea S, Kruske S, Grzybowski S, Robin S, Rolfe M, Donoghue D,
17 Morgan GG, Barclay L (2017) Maternity services for rural and remote Australia: barriers to operationalising
18 national policy. *Health Policy*. <https://doi.org/10.1016/j.healthpol.2017.09.012>
19
20
21
22 30. Goddard M (2009) Access to health care services--an English policy perspective. *Health Econ Policy*
23 *Law*. <https://doi.org/10.1017/S174413310900485X>
24
25
26 31. Clarke JM, Barahona M, Darzi AW (2019) Defining Hospital Catchment Areas Using Multiscale
27 Community Detection: A Case Study for Planned Orthopaedic Care in England. *bioRxiv*.
28
29 <https://doi.org/10.1101/619692>
30
31
32 32. Atkinson JA, Page A, Prodan A, McDonnell G, Osgood N (2018) Systems modelling tools to support
33 policy and planning. *The Lancet*. [https://doi.org/10.1016/S0140-6736\(18\)30302-7](https://doi.org/10.1016/S0140-6736(18)30302-7)
34
35
36 33. Freebairn L, Atkinson J, Kelly P, McDonnell G, Rychetnik L (2016) Simulation modelling as a tool for
37 knowledge mobilisation in health policy settings: a case study protocol. *Health Research Policy and*
38 *Systems*. <https://doi.org/10.1186/s12961-016-0143-y>
39
40
41
42 34. Harris B, Batty M (1993) Locational Models, Geographic Information and Planning Support Systems.
43 *Journal of Planning Education and Research*. <https://doi.org/10.1177/0739456X9301200302>
44
45
46 35. Dormuth C, Burnett S, Schneeweiss S (2005) Using policy simulation to predict drug plan expenditure
47 when planning reimbursement changes. *PharmacoEconomics*. [https://doi.org/10.2165/00019053-](https://doi.org/10.2165/00019053-200523100-00005)
48 [200523100-00005](https://doi.org/10.2165/00019053-200523100-00005)
49
50
51
52 36. Kommer GJ (2002) A Waiting List Model for Residential Care for the Mentally Disabled in the
53 Netherlands. *Health Care Management Science*. <https://doi.org/10.1023/A:1020386224121>
54
55
56 37. Pavel MC, Fuster J (2018) Expansion of the hepatocellular carcinoma Milan criteria in liver
57 transplantation: Future directions. *World J Gastroenterol*. <https://doi.org/10.3748/wjg.v24.i32.3626>
58
59
60
61
62
63
64
65

- 1 38. Mestre A, Oliveira M, Barbosa-Povoa A (2012) Organizing hospitals into networks: a hierarchical and
2 multiservice model to define location, supply and referrals in planned hospital systems. *OR Spectrum*.
3
4 <https://doi.org/10.1007/s00291-011-0272-1>
5
6 39. Beere P, Brabyn L (2006) Providing the evidence: Geographic accessibility of maternity units in New
7 Zealand. *New Zealand Geographer*. <https://doi.org/10.1111/j.1745-7939.2006.00056.x>
8
9 40. Buscail C, Upegui E, Viel JF (2012) Mapping heatwave health risk at the community level for public
10 health action. *International Journal of Health Geographics*. <https://doi.org/10.1186/1476-072X-11-38>
11
12 41. Madge S, Bell SC, Burgel PR, De Rijcke K, Blasi F, Elborn JS (2017) Limitations to providing adult
13 cystic fibrosis care in Europe: Results of a care centre survey. *Journal of Cystic Fibrosis*.
14
15 <https://doi.org/10.1016/j.jcf.2016.07.001>
16
17 42. Halbout P, Lebaudy JP, Gagneux F, Brosius N, Pelletier B, Danic B (2015) La géomatique au service de
18 la collecte de sang. *Transfusion Clinique et Biologique*. <https://doi.org/10.1016/j.tracli.2015.05.008>
19
20 43. Salleh S, Thokala P, Brennan A, Hughes R, Booth A (2017) Simulation Modelling in Healthcare: An
21 Umbrella Review of Systematic Literature Reviews. *PharmacoEconomics*. [https://doi.org/10.1007/s40273-](https://doi.org/10.1007/s40273-017-0523-3)
22
23 [017-0523-3](https://doi.org/10.1007/s40273-017-0523-3)
24
25 44. Fulconis F, Joubert J (2017) Compétitivité et réseau public d'offre de soins: des communautés
26 hospitalières de territoire aux groupements hospitaliers de territoire. *Management & Avenir*.
27
28 <https://doi.org/10.3917/mav.093.0037>
29
30 45. Moulin T, Salles N (2017) National Health Strategy, medical desert and access to healthcare: One
31 operational answer, *Telemedicine*. *European Research in Telemedicine*.
32
33 <https://doi.org/10.1016/j.eurtele.2017.10.004>
34
35 46. LOI n° 2016-41 du 26 janvier 2016 de modernisation de notre système de santé. SRS = L 1434-3 CSP.
36
37 <https://www.legifrance.gouv.fr/affichTexte.do?cidTexte=JORFTEXT000031912641&categorieLien=id>
38
39 47. Mick S (1996) An American in Clamency: closing of small hospitals in France. *Cah Sociol Demogr*
40
41 *Med*. <https://www.ncbi.nlm.nih.gov/pubmed/8796102>
42
43 48. France Infos (2019) My maternity will close. France now has 488 maternities; in 1975, there were 1,369.
44
45 Do these closures pose a risk to future mothers and their children?
46
47 https://www.francetvinfo.fr/sante/politique-de-sante/video-ma-maternite-va-fermer_3185415.html. Accessed
48
49 5th December 2019
50
51
52
53
54
55
56
57
58
59
60
61
62
63
64
65

1 49. Coulm B, Ray C, Lelong N, Drewniak N, Zeitlin J, Blondel B (2012) Obstetric Interventions for Low-
2 Risk Pregnant Women in France: Do Maternity Unit Characteristics Make a Difference? Birth.

3
4
5 <https://doi.org/10.1111/j.1523-536X.2012.00547.x>

6 50. Coutts C, Horner M, Chapin T (2010) Using geographical information system to model the effects of
7 green space accessibility on mortality in Florida. Geocarto International.

8
9
10 <https://doi.org/10.1080/10106049.2010.505302>

11 51. Cetin. M (2019) The effect of urban planning on urban formations determining bioclimatic comfort
12 area's effect using satellitia imagines on air quality: a case study of Bursa city. Air Quality Atmosphere &
13 Health. <https://doi.org/10.1007/s11869-019-00742-4>

14
15
16
17
18 52. Kaya E, Agca M, Adiguzel F, Cetin M (2019) Spatial data analysis with R programming for
19 environment. Human and Ecological Risk Assessment: An International Journal.

20
21
22 <https://doi.org/10.1080/10807039.2018.1470896>

23 53. Charlton M, Brunson C, Fotheringham A.S (2000) Spatial Modelling and the Evolution of Spatial
24 Theory. In: SAGE Publications (ed) Quantitative Geography: Perspectives On Spatial Data Analysis.
25 Publications Ltd, London, UK, pp 213, 216-217 and 235 [https://methods.sagepub.com/book/quantitative-](https://methods.sagepub.com/book/quantitative-geography/n9.xml)
26
27
28
29
30
31
32 geography/n9.xml

33 54. ISO/TC 211 (2019) Definition of "Geographic information/Geomatics". International Organization for
34 Standardization (ISO) Central Secretariat. <https://www.isotc211.org/strategic-policy/>. Accessed 17th
35
36
37
38
39
40
41
42
43
44
45
46
47
48
49
50
51
52
53
54
55
56
57
58
59
60
61
62
63
64
65
66
67
68
69
70
71
72
73
74
75
76
77
78
79
80
81
82
83
84
85
86
87
88
89
90
91
92
93
94
95
96
97
98
99
100
101
102
103
104
105
106
107
108
109
110
111
112
113
114
115
116
117
118
119
120
121
122
123
124
125
126
127
128
129
130
131
132
133
134
135
136
137
138
139
140
141
142
143
144
145
146
147
148
149
150
151
152
153
154
155
156
157
158
159
160
161
162
163
164
165
166
167
168
169
170
171
172
173
174
175
176
177
178
179
180
181
182
183
184
185
186
187
188
189
190
191
192
193
194
195
196
197
198
199
200
201
202
203
204
205
206
207
208
209
210
211
212
213
214
215
216
217
218
219
220
221
222
223
224
225
226
227
228
229
230
231
232
233
234
235
236
237
238
239
240
241
242
243
244
245
246
247
248
249
250
251
252
253
254
255
256
257
258
259
260
261
262
263
264
265
266
267
268
269
270
271
272
273
274
275
276
277
278
279
280
281
282
283
284
285
286
287
288
289
290
291
292
293
294
295
296
297
298
299
300
301
302
303
304
305
306
307
308
309
310
311
312
313
314
315
316
317
318
319
320
321
322
323
324
325
326
327
328
329
330
331
332
333
334
335
336
337
338
339
340
341
342
343
344
345
346
347
348
349
350
351
352
353
354
355
356
357
358
359
360
361
362
363
364
365
366
367
368
369
370
371
372
373
374
375
376
377
378
379
380
381
382
383
384
385
386
387
388
389
390
391
392
393
394
395
396
397
398
399
400
401
402
403
404
405
406
407
408
409
410
411
412
413
414
415
416
417
418
419
420
421
422
423
424
425
426
427
428
429
430
431
432
433
434
435
436
437
438
439
440
441
442
443
444
445
446
447
448
449
450
451
452
453
454
455
456
457
458
459
460
461
462
463
464
465
466
467
468
469
470
471
472
473
474
475
476
477
478
479
480
481
482
483
484
485
486
487
488
489
490
491
492
493
494
495
496
497
498
499
500
501
502
503
504
505
506
507
508
509
510
511
512
513
514
515
516
517
518
519
520
521
522
523
524
525
526
527
528
529
530
531
532
533
534
535
536
537
538
539
540
541
542
543
544
545
546
547
548
549
550
551
552
553
554
555
556
557
558
559
560
561
562
563
564
565
566
567
568
569
570
571
572
573
574
575
576
577
578
579
580
581
582
583
584
585
586
587
588
589
590
591
592
593
594
595
596
597
598
599
600
601
602
603
604
605
606
607
608
609
610
611
612
613
614
615
616
617
618
619
620
621
622
623
624
625
626
627
628
629
630
631
632
633
634
635
636
637
638
639
640
641
642
643
644
645
646
647
648
649
650
651
652
653
654
655
656
657
658
659
660
661
662
663
664
665
666
667
668
669
670
671
672
673
674
675
676
677
678
679
680
681
682
683
684
685
686
687
688
689
690
691
692
693
694
695
696
697
698
699
700
701
702
703
704
705
706
707
708
709
710
711
712
713
714
715
716
717
718
719
720
721
722
723
724
725
726
727
728
729
730
731
732
733
734
735
736
737
738
739
740
741
742
743
744
745
746
747
748
749
750
751
752
753
754
755
756
757
758
759
760
761
762
763
764
765
766
767
768
769
770
771
772
773
774
775
776
777
778
779
780
781
782
783
784
785
786
787
788
789
790
791
792
793
794
795
796
797
798
799
800
801
802
803
804
805
806
807
808
809
810
811
812
813
814
815
816
817
818
819
820
821
822
823
824
825
826
827
828
829
830
831
832
833
834
835
836
837
838
839
840
841
842
843
844
845
846
847
848
849
850
851
852
853
854
855
856
857
858
859
860
861
862
863
864
865
866
867
868
869
870
871
872
873
874
875
876
877
878
879
880
881
882
883
884
885
886
887
888
889
890
891
892
893
894
895
896
897
898
899
900
901
902
903
904
905
906
907
908
909
910
911
912
913
914
915
916
917
918
919
920
921
922
923
924
925
926
927
928
929
930
931
932
933
934
935
936
937
938
939
940
941
942
943
944
945
946
947
948
949
950
951
952
953
954
955
956
957
958
959
960
961
962
963
964
965
966
967
968
969
970
971
972
973
974
975
976
977
978
979
980
981
982
983
984
985
986
987
988
989
990
991
992
993
994
995
996
997
998
999
1000

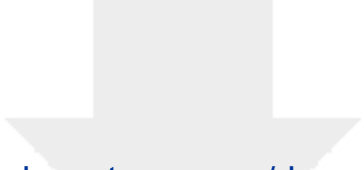
57. Parachoor SB, Rosow E, Enderle JD (2003) Knowledge management system for benchmarking
performance indicators using statistical process control (SPC) and Virtual Instrumentation (VI). Biomed Sci
Instrum. <https://www.ncbi.nlm.nih.gov/pubmed/12724889>

- 1 58. Staccini P, Joubert M, Quaranta JF, Fieschi D, Fieschi M (2001) Modelling health care processes for
2 eliciting user requirements: a way to link a quality paradigm and clinical information system design. *Int J*
3 *Med Inform.* [https://doi.org/10.1016/S1386-5056\(01\)00203-9](https://doi.org/10.1016/S1386-5056(01)00203-9)
4
5
6 59. Saurman E (2015) Improving access: modifying Penchansky and Thomas's Theory of Access. *J Health*
7 *Serv Res Policy.* <https://doi.org/10.1177/1355819615600001>
8
9
10 60. Higgs G (2004) A literature review of the use of GIS-based measures of access to health care services.
11 *Health Services and Outcomes Research Methodology.* <https://doi.org/10.1007/s10742-005-4304-7>
12
13 61. Turnbull J, Martin D, Lattimer V, Pope C, Culliford D (2008) Does distance matter? Geographical
14 variation in GP out-of-hours service use: an observational study. *The British Journal of General Practice.*
15 <https://doi.org/10.3399/bjgp08X319431>
16
17
18 62. Guagliardo MF (2004) Spatial accessibility of primary care: concepts, methods and challenges. *Int J*
19 *Health Geogr.* <https://doi.org/10.1186/1476-072X-3-3>
20
21 63. Kordi M, Fotheringham AS (2016) Spatially Weighted Interaction Models (SWIM). *Annals of the*
22 *American Association of Geographers.* <https://doi.org/10.1080/24694452.2016.1191990>
23
24 64. Swan GM, Selvaraj S, Godden DJ (2008) Clinical peripherality: development of a peripherality index for
25 rural health services. *BMC Health Serv Res.* <https://doi.org/10.1186/1472-6963-8-23>
26
27 65. Haggett P (1973) Interaction - Movement and Distance - Elementary Interaction Models In: Colin A (ed)
28 *Locational Analysis in Human Geography.* Armand Colin, Paris, France, pp 35-45
29
30 66. Luo W, Qi Y (2009) An enhanced two-step floating catchment area (E2SFCA) method for measuring
31 spatial accessibility to primary care physicians. *Health Place.*
32 <https://doi.org/10.1016/j.healthplace.2009.06.002>
33
34 67. Donald PA (2014) Catchments of general practice in different countries - a literature review.
35 *International Journal of Health Geographics.* <https://doi.org/10.1186/1476-072X-13-32>.
36
37 68. Delamater PL (2019) Spatial accessibility in suboptimally configured health care systems: a modified
38 two-step floating catchment area (M2SFCA) metric. *Health Place.* [https://doi.org/10.1186/s12913-019-3969-](https://doi.org/10.1186/s12913-019-3969-5)
39
40
41
42
43
44
45
46
47
48
49
50
51 5
52
53 69. Bailly A, Beguin H (1995) An epistemology of geography. In: Masson (ed) *Introduction to Human*
54 *Geography.* Masson, Paris, Milan, Barcelone, pp 15-34
55
56
57 70. Haggett P (1965) *The Locational Analysis in Human Geography.* 1st edn. Butler and Tanner, Frome and
58 London, UK
59
60
61
62
63
64
65

- 1 71. Christofolletti A (1989) Panorama et évaluation du concept d'organisation spatiale. L'espace
2 géographique. https://www.persee.fr/doc/spgeo_0046-2497_1989_num_18_3_2893
3
- 4 72. Bunge W (1966) Theoretical geography, vol 1. General and mathematical geography, 2nd edn. Royal
5 University of Lund, Gleerup, Sweden. <https://sk.sagepub.com/books/key-texts-in-human-geography/n2.xml>
6
- 7 73. Cliff A, Haggett P (1993) Atlas of disease distributions: analytic approaches to epidemiological data.
8
9 2nd edn. Blackwell Reference, Oxford, UK
- 10 74. Abler RF, Adams JS, Gould PR (1971) Spatial organization: the geographer's view of the world.
11
12 Englewood Giffs - Prentice Hall INC-New Jersey, London, UK
- 13 75. Isnard H (1978) L'espace géographique, vol 25. Le géographe, Coll. Sup. edn. PUF, Paris, France.
14
15 https://www.persee.fr/doc/medit_0025-8296_1978_num_33_3_1788
16
17
- 18 76. Nonga-Honla J (2000) La modélisation des systèmes complexes In: Les fiches lecture de la Chaire
19
20 D.S.O. by JL Le Moigne <http://mip->
21
22 [ms.cnam.fr/servlet/com.univ.collaboratif.utils.LectureFichiergw?ID_FICHER=1295877018078](http://mip-ms.cnam.fr/servlet/com.univ.collaboratif.utils.LectureFichiergw?ID_FICHER=1295877018078) Accessed
23
24 27th November 2019
- 25 77. Reilly WJ (1929) Methods for the study of retail relationships. Research monograph, vol 4. The
26
27 University, Austin, Tex. USA
- 28 78. Reilly W (1931) The law of the retail gravitation. Models in geography / Retail trade. Knickerbocker
29
30 Press, NY, USA
- 31 79. Haynes KE, Fotheringham SA (1984) Gravity and Spatial Interaction Models, vol 2. SAGE series in
32
33 Scientific Geography. SAGE, Beverly Hills/London/New Delhi. [https://risweb.st-](https://risweb.st-andrews.ac.uk/portal/en/researchoutput/gravity-and-spatial-interaction-models(28be845d-384c-46d6-8aff-fb8daa5ca4fa)/export.html)
34
35 [andrews.ac.uk/portal/en/researchoutput/gravity-and-spatial-interaction-models\(28be845d-384c-46d6-8aff-](https://risweb.st-andrews.ac.uk/portal/en/researchoutput/gravity-and-spatial-interaction-models(28be845d-384c-46d6-8aff-fb8daa5ca4fa)/export.html)
36
37 [fb8daa5ca4fa\)/export.html](https://risweb.st-andrews.ac.uk/portal/en/researchoutput/gravity-and-spatial-interaction-models(28be845d-384c-46d6-8aff-fb8daa5ca4fa)/export.html)
38
39
- 40 80. Mizrahi A, Mizrahi A (1992-93) Les champs d'action des équipements médicaux: distances et
41
42 consommations médicales. Espace, Populations, Sociétés. [https://www.persee.fr/doc/espos_0755-](https://www.persee.fr/doc/espos_0755-7809_1992_num_10_3_1539)
43
44 [7809_1992_num_10_3_1539](https://www.persee.fr/doc/espos_0755-7809_1992_num_10_3_1539)
45
46
- 47 81. Mizrahi A, Mizrahi A, Rosch G (1963) Les champs d'action des équipements hospitaliers. CREDOC.
48
49 <https://www.credoc.fr/download/pdf/Sou/Sou1963-3056.pdf>
50
51
- 52 82. Quesnel-Barbet A, Duhamel A, Quesnel B, Thumerelle PJ, Beuscart R (2001) A mathematical model of
53
54 hospital attraction area. Medinfo 2001. <http://ebooks.iospress.nl/publication/19564>
55
56
57
58
59
60
61
62
63
64
65

- 1 83. Tonnellier F, Vignerot E (1999) La géographie de la santé en France. Que sais-je, n°3435. PUF,
 2 Vendôme, France. https://www.puf.com/content/G%C3%A9ographie_de_la_sant%C3%A9_en_France
 3
- 4 84. Antunez K, Baccaïni B, Guérois M, Ysebaert R (2017) Disparities and territorial discontinuities in
 5 France with its new regions: A multiscalar and multidimensional interpretation. *Economics and Statistics*.
 6
 7 <https://www.insee.fr/en/statistiques/fichier/3318021/497-498-EN.pdf>
 8
- 9 85. Boudemaghe T, Belhadj I (2017) Data Resource Profile: The French National Uniform Hospital
 10 Discharge Data Set Database (PMSI). *International Journal of Epidemiology*.
 11
 12 <https://doi.org/10.1093/ije/dyw359>
 13
- 14 86. Quesnel-Barbet A Geography of spatial utilization of the health services: a Newtonian modelling of
 15 hospital catchment areas (Géographie de l'utilisation spatiale des services de santé: une modélisation
 16 newtonienne des zones de recrutement des hôpitaux). In: *Emerging and New Research in Geographies of*
 17 *Health and Impairment*, Durham, UK, 6th - 7th April 2009. Department of Geography, Durham University,
 18
 19 p 17. <https://hal.archives-ouvertes.fr/hal-01976184/>
 20
- 21 87. Quesnel-Barbet A (2016) Matlab© programs of the drawn models in oncology-hematology (blood
 22 cancer) and traumatology (total hip replacement) applied on the former French Nord-Pas-de-Calais region -
 23 Thesis of quantitative geography 2002. https://github.com/drfrangipane/PoleSat_2016. Accessed 27th
 24
 25 November 2019
 26
- 27 88. Quesnel A (2003) PoleSat: Demonstration of spatial modelling in oncology-hematology. Free.fr.
 28
 29 <http://quesnela.free.fr/HEMATOLOGIE.htm>. Accessed 17 October 2019
 30
 31
- 32 89. Wikipédia (2019) Heuristic (computer_science).
 33
 34 [https://en.wikipedia.org/wiki/Heuristic_\(computer_science\)](https://en.wikipedia.org/wiki/Heuristic_(computer_science)). Accessed 17 October 2019
 35
 36
- 37 90. Caloz Régis, Collet Claude (2011) Analyse spatiale de l'information géographique. In: C Holliger
 38 (EPFL) - S Erkman (UNIL) (ed) *Ingénierie de l'environnement*, 1st edn. EPFL, Lausanne, Switzerland, pp
 39
 40 43-95, 85. <https://journals.openedition.org/tem/1952>
 41
 42
- 43 91. Delaunay B (1934) On the empty sphere. In memory of G Voronoï (Sur la sphère vide. A la mémoire de
 44
 45 G Voronoï). <http://mi.mathnet.ru/izv4937>. Accessed 17 October 2019
 46
 47
- 48 92. Robert J. Renka (1997) Algorithm 772: STRIPACK: Delaunay Triangulation and Voronoi Diagram on
 49
 50 the Surface of a Sphere. *ACM TOMS*. <https://doi.org/10.1145/275323.275329>
 51
 52
- 53 93. Ullman S, Poggio T, Harari D, Zysman D, Seibert D (2014) 9.54 Class 13 - Unsupervised learning
 54
 55 Clustering. <http://www.mit.edu/~9.54/fall14/slides/Class13.pdf>. Accessed 17 October 2019
 56
 57
 58
 59
 60
 61
 62
 63
 64
 65

- 1 94. Quesnel-Barbet A, Soula J, Gamichon M (2019) A validation step related to Figs 5-e, 5-f, Published
2 Shiny Application. <https://drfrangipaneee.shinyapps.io/validation/>. Accessed 17 October 2019
3
- 4 95. Quesnel-Barbet A, Soula J, Gamichon M (2018) PoleSat_2018: a web online application for a strategic
5 health-planning-management decision making - with an user-guide. [https://thymine.univ-](https://thymine.univ-lille2.fr/polesat2018)
6
7 lille2.fr/polesat2018 login: demo3/pw: polesat4. Accessed 9th December 2019
8
9
- 10 96. Sarazin M, El Merini A, Staccini P (2016) Impact of a Computer System and the Encoding Staff
11 Organization on the Encoding Stays and on Health Institution Financial Production in France. MIE 2016.
12
13 <http://ebooks.iospress.nl/publication/44561>
14
- 15 97. Data-gouv-France (2019) National File of Sanitary and Social Institutions (FINESS): Extracting the
16 health-social-establishment file. data.gouv.fr. [https://www.data.gouv.fr/fr/datasets/finess-extraction-du-](https://www.data.gouv.fr/fr/datasets/finess-extraction-du-fichier-des-etablissements/)
17
18 [fichier-des-etablissements/](http://finess.sante.gouv.fr/) <http://finess.sante.gouv.fr/> Accessed 27th November 2019
19
20
21
- 22 98. Quesnel-Barbet A (2019) References of the used geographic databases in PoleSat_2018 Univ-Lille,
23 France. <http://pr-polesat2018/polesat2019-metier/doc/referentiel.xlsx>. Accessed 27th November 2019
24
25
- 26 99. Quesnel-Barbet A, Soula J, Bazile P, Sauleau E-A, Parrend P (2019) PoleSat_2018, a strategic IT tool
27 for spatial simulation modelling of hospital planning. EFMI STC 2019. [https://doi.org/10.3233/978-1-](https://doi.org/10.3233/978-1-61499-959-1-261)
28
29 61499-959-1-261
30
31
- 32 100. Quesnel-Barbet A, Soula J, Sauleau E, Parrend P, Bazile P, Dufosse F, Hansske A (2019) Polesat-
33 Web-2018: A Simulation IT Tool with Immediate Prospective and Strategic Views of Hospital Spatial
34 Planning. Medinfo 2019. <https://doi.org/10.3233/SHTI190633>
35
36
- 37 101. Khiripet N, Khantuwan W, Jungck JR (2012) Ka-me: a Voronoi image analyzer. Bioinformatics :
38 Application note. <https://doi.org/10.1093/bioinformatics/bts253>
39
40
- 41 102. Wikipedia (2008) Gabriel graph. https://en.wikipedia.org/wiki/Gabriel_graph. Accessed 17 October
42
43 2019
44
45
- 46 103. LOI n° 2018-493 du 20 juin 2018 relative à la protection des données personnelles) (2018).
47
48 <https://www.legifrance.gouv.fr/affichTexte.do?cidTexte=JORFTEXT000037085952&categorieLien=id>
49
50
- 51 104. CNIL (2019) Le RGPD appliqué au secteur de la santé. [https://www.cnil.fr/fr/le-rgpd-applique-au-](https://www.cnil.fr/fr/le-rgpd-applique-au-secteur-de-la-sante)
52
53 [secteur-de-la-sante](https://www.cnil.fr/fr/le-rgpd-applique-au-secteur-de-la-sante). Accessed 27th November 2019
54
55
- 56 105. Wikipedia (2019) A deterministic system: definition.
57
58 https://fr.wikipedia.org/wiki/Syst%C3%A8me_d%C3%A9terministe. Accessed 17 October 2019
59
60
61
62
63
64
65



Click here to access/download
Supplementary Material
0_ESM 1.pdf

