



HAL
open science

Co-exposure to internal and external radiation alters cesium biokinetics and retention in mice

Jean Marc Bertho, Raphael Bo, Victor Magneron, Audrey Legendre, Margaux Cochard, David Broggio, Karine Tack

► To cite this version:

Jean Marc Bertho, Raphael Bo, Victor Magneron, Audrey Legendre, Margaux Cochard, et al.. Co-exposure to internal and external radiation alters cesium biokinetics and retention in mice. *Journal of Radiological Protection*, 2020, 40, pp.504-519. 10.1088/1361-6498/ab7b43 . hal-02869303

HAL Id: hal-02869303

<https://hal.science/hal-02869303>

Submitted on 15 Jun 2020

HAL is a multi-disciplinary open access archive for the deposit and dissemination of scientific research documents, whether they are published or not. The documents may come from teaching and research institutions in France or abroad, or from public or private research centers.

L'archive ouverte pluridisciplinaire **HAL**, est destinée au dépôt et à la diffusion de documents scientifiques de niveau recherche, publiés ou non, émanant des établissements d'enseignement et de recherche français ou étrangers, des laboratoires publics ou privés.



Distributed under a Creative Commons Attribution - NonCommercial - NoDerivatives 4.0 International License

ACCEPTED MANUSCRIPT

Co-exposure to internal and external radiation alters cesium biokinetics and retention in the mouse

To cite this article before publication: Jean-Marc Bertho *et al* 2020 *J. Radiol. Prot.* in press <https://doi.org/10.1088/1361-6498/ab7b43>

Manuscript version: Accepted Manuscript

Accepted Manuscript is “the version of the article accepted for publication including all changes made as a result of the peer review process, and which may also include the addition to the article by IOP Publishing of a header, an article ID, a cover sheet and/or an ‘Accepted Manuscript’ watermark, but excluding any other editing, typesetting or other changes made by IOP Publishing and/or its licensors”

This Accepted Manuscript is © 2020 Society for Radiological Protection. Published on behalf of SRP by IOP Publishing Limited. All rights reserved..

During the embargo period (the 12 month period from the publication of the Version of Record of this article), the Accepted Manuscript is fully protected by copyright and cannot be reused or reposted elsewhere.

As the Version of Record of this article is going to be / has been published on a subscription basis, this Accepted Manuscript is available for reuse under a CC BY-NC-ND 3.0 licence after the 12 month embargo period.

After the embargo period, everyone is permitted to use copy and redistribute this article for non-commercial purposes only, provided that they adhere to all the terms of the licence <https://creativecommons.org/licenses/by-nc-nd/3.0>

Although reasonable endeavours have been taken to obtain all necessary permissions from third parties to include their copyrighted content within this article, their full citation and copyright line may not be present in this Accepted Manuscript version. Before using any content from this article, please refer to the Version of Record on IOPscience once published for full citation and copyright details, as permissions will likely be required. All third party content is fully copyright protected, unless specifically stated otherwise in the figure caption in the Version of Record.

View the [article online](#) for updates and enhancements.

CO-EXPOSURE TO INTERNAL AND EXTERNAL RADIATION ALTERS CESIUM BIOKINETICS AND
RETENTION IN THE MOUSE

Jean-Marc Bertho¹, Raphaël Bo², Victor Magneron¹, Audrey Legendre¹, Margaux Cochard¹, David
Broggio², Karine Tack¹

1- Institut de Radioprotection et de Sûreté Nucléaire (IRSN), PSE-SANTE / SESANE,
Fontenay-aux Roses, France.

2- Institut de Radioprotection et de Sûreté Nucléaire (IRSN), PSE-SANTE / SDOS,
Fontenay-aux Roses, France.

Author for correspondence: Jean-Marc Bertho,

IRSN, PSE-SAN/SESANE

31 avenue de la division Leclerc

BP 17

92262 Fontenay-aux-roses cedex, France

Phone : +33 (1) 58 35 95 48

Mail : jean-marc.bertho@asn.fr

Orcid id :

J. M. Bertho: 0000-0002-2359-1507

A. Legendre: 0000-0001-6219-0100

D. Broggio: 0000-0001-8118-8268

K. Tack: 0000-0002-6377-6135

Keyword: Coexposure; External exposure; Cesium-137; Biological effects

Abstract:

Exposures in post-accidental situations are complex and include both external exposure and internal contamination with several radionuclides. However, *in vivo* and *in vitro* studies generally use simplified exposures, while a recent study suggested that combined external irradiation and internal contamination may induce more severe biological effects as compared to single exposures. In an attempt to test the hypothesis of potential non-additive effects of multiple radiological exposures, we used a mouse model of combined external X rays irradiation at 1 and 5 Gy and internal contamination with injection of 20 KBq ^{137}Cs . Results showed a differential kinetics of ^{137}Cs elimination in irradiated animals as compared to sham-irradiated, ^{137}Cs injected animals. Moreover, changes in plasma potassium and in relative testis weight were observed 38 days after irradiation and injection in co-exposed animals as compared to ^{137}Cs injection alone. These results demonstrate that an external exposure combined with an internal contamination may lead to unexpected changes in biokinetics of radionuclides and biological effects as compared to single exposures.

Introduction:

Population exposure during the early phase of a major nuclear accident is mainly due to two components, the external exposure due to radionuclides (RN) dispersion in the atmosphere and internal exposure due to inhalation. On the long term, these two components change to an external irradiation due to the integration of RNs in all components of the environment and to internal exposure due to the presence of RNs in foodstuffs and feedstuffs (Bernhardsson *et al.*, 2011; Cooper *et al.*, 1992; Handl *et al.*, 2003). The relative contribution of these two components of post-accidental exposure changes with time, typically with a trend of increased contribution of internal exposure (Bernhardsson *et al.*, 2011). However, in most studies (either epidemiological or not) on the health effect of exposure on human populations in post accidental situation, it is quite difficult to make a distinction between the effect of external exposure and the effect of internal exposure, although an evaluation of the relative contributions of internal exposure and external exposure can be made. In most of the post Chernobyl studies, the exposure is reconstructed based mainly on the contamination level of the place of residence, assimilating external and internal exposure in a single aggregated parameter. A recent study showed that, in a group of 590 children aged less than 18 and born after the Chernobyl accident, a decrease in the number of red blood cells was correlated with ^{137}Cs whole body counting (WBC) but not with the ^{137}Cs contamination level of soils from the place of residence (Lindgren *et al.*, 2013), suggesting that the use of contamination level of soils is not a good surrogate for estimating overall exposure.

Laboratory *in vivo* studies utilize highly controlled exposure modes consisting of either external irradiation at low doses and low dose rates (Vieira Dias *et al.*, 2018; Ebrahimian *et al.*, 2018) or internal contamination with a single radionuclide, ^{137}Cs (a gamma ray emitter) in most cases (Grison *et al.*, 2012; Le Gallic *et al.*, 2015) and ^{90}Sr (a beta ray emitter) less frequently (Nikula *et al.*, 1995; Synhaeve *et al.*, 2016). A variety of biological effects have been demonstrated in such single radionuclide exposure studies, for example a reduction in arterial pressure (Gueguen *et al.*, 2008) or a decrease in inflammatory status of atherosclerotic lesions (Le Gallic *et al.*, 2015) after internal exposure to ^{137}Cs .

1
2
3 These results on ^{137}Cs -induced changes in cardiovascular physiology appear somewhat in contradiction
4
5 with results obtained in human populations showing either an increase in cerebrovascular diseases in
6
7 liquidators (Ivanov *et al.*, 2006) or an absence of effect in children living on contaminated territories
8
9 (Jourdain *et al.*, 2018). An absence of effect of ^{137}Cs was also observed on the immune system in a
10
11 mouse model (Bertho *et al.*, 2011), while numerous effects were described in human populations living
12
13 on contaminated territories (UNSCEAR, 2000; Chumak *et al.*, 2001; Kuzmenok *et al.*, 2003; McMahon
14
15 *et al.*, 2014).
16
17
18

19
20 A possible explanation for these discrepancies is that the exposure profile is not sufficiently well
21
22 assessed in human studies and overly simplified (i.e. not sufficiently representative of real exposure)
23
24 in laboratory studies. For instance, laboratory studies using a mixed exposure, both internal and
25
26 external, are very sparse. A series of studies was conducted by the end of the 60's by Nishio (Nishio,
27
28 1968, 1969, 1971; Nishio *et al.*, 1968) in a mouse model of ^{137}Cs + ^{90}Sr chronic, long term internal
29
30 exposure. This author demonstrated a reduced life expectancy and a reduction of reproductive
31
32 efficiency. However, in these studies, there was no comparison between exposure with a single
33
34 radionuclide and the mixture of the two radionuclides (Nishio, 1968, 1969, 1971; Nishio *et al.*, 1968).
35
36 This absence of study about the effect of combined exposure is probably linked to the hypothesis of
37
38 additivity of health effects as absorbed dose are considered as additive, too. However, a recent study
39
40 (Calvi *et al.*, 2019) showed that the elimination of ^{137}Cs after i.p. injection was slowed in animals
41
42 concomitantly irradiated at 6 Gy as compared to unirradiated controls. This slowdown of ^{137}Cs
43
44 elimination induced an increase in the absorbed dose due to ^{137}Cs , which in turn induced an increase
45
46 in the death rate of co-exposed animals. These results suggests that, even if the absorbed doses from
47
48 external irradiation and internal exposure are purely additive, the resulting biological effects of mixed
49
50 exposures are possibly very different from what can be expected from single exposures.
51
52
53
54

55
56 In order to test this hypothesis, we used a male mouse model exposed at 1 or 5 Gy external X rays
57
58 irradiation together with internal exposure through i.p. injection of 20 KBq of ^{137}Cs . Since the exposure
59
60

1
2
3 to ^{137}Cs through either inhalation or ingestion results in a rapid transfer of ^{137}Cs to the blood with
4
5 almost 100% efficacy (Leggett et al, 2003, ICRP 2017), we assume that an i.p. injection of ^{137}Cs is
6
7 equivalent to an acute exposure through either inhalation or ingestion. This exposure schedule is not
8
9 expected to induce the death of animals. However, tissue effects are expected to appear mainly in the
10
11 hematopoietic system and in the testis, two of the most radiosensitive organs with this respect.
12
13 Animals were then followed for ^{137}Cs elimination through whole body counting (WBC) and ^{137}Cs organ
14
15 content. Animals were then tested for several biological endpoints, including hematopoietic and testis
16
17 end-points, since these two organs are the most radiosensitive to tissue effects. Moreover, cesium is
18
19 considered as a physiological analog of potassium (Leggett et al, 2003, ICRP 2017) which is tightly
20
21 regulated in the blood, as well as other ions such as chloride, sodium and calcium playing major roles
22
23 in physiology both at the molecular cellular and tissue level. It thus appeared interesting to look at
24
25 potential modifications of ion concentration in the plasma.
26
27
28
29
30
31
32
33
34
35
36
37
38
39
40
41
42
43
44
45
46
47
48
49
50
51
52
53
54
55
56
57
58
59
60

Material and methods:

Animals and experimental groups: BALB/C JrJ male mice (Janvier labs, Le Genest Saint Isle, France) were housed by groups of 6 in standard cages and kept at constant room temperature ($21^{\circ}\text{C} \pm 2^{\circ}\text{C}$) with a 12h daylight cycle. Animals received ad libitum acidified water and commercial rodent chow (R03-type chow; Safe, Epinay-sur-Orge, France). The animal care committee of the Institut de Radioprotection et de Sûreté Nucléaire (IRSN) reviewed and approved all animal experiments under the agreement number APAFIS#10405-2017062716552009 v3. These animal experiments were conducted in accordance with the French regulations for animal experimentation (Ministry of agriculture act No 2001-464, May 2001).

After arrival, animals were trained for restraint by staying for increasing times (5 min up to 30 min) once a day in plastic restrain tubes (Bioseb, Vitrolles, France) for two consecutive weeks. Mice were then randomly distributed into six experimental groups: Control group (sham irradiated and saline injection), ^{137}Cs injection alone, total body (TBI) external irradiation 1 Gy or 5 Gy, and TBI 1 Gy or 5 Gy plus ^{137}Cs injection (n=6 per group).

Irradiation and ^{137}Cs injection: TBI or sham irradiation were done using an Elektra Synergy platform (Elektra SAS France, Boulogne, France) delivering 4 MV X-rays at $2.8 \text{ Gy}\cdot\text{min}^{-1}$. Two radiation doses were used, 1 Gy and 5 Gy. 30 minutes after irradiation, animals were injected i.p. with either saline solution (NaCl 0.9%, Osalia, Paris, France) or with 20 kBq $^{137}\text{CsCl}$ (mass activity $1040 \text{ kBq}\cdot\text{g}^{-1}$ in a $10 \mu\text{g}\cdot\text{ml}^{-1}$ solution of stable CsCl, CERCA-LEA, Pierrelatte, France) diluted in saline with pH adjusted to 7.0. The resulting quantity of cesium (^{137}Cs + stable) injected per animal was thus 2.28×10^{-9} mole.

Follow-up of ^{137}Cs internal contamination: Total activity of ^{137}Cs in animals was followed by whole body measurement using a Germanium detector (Model GR4020, Canberra, Olen, Belgium) and a Genie 2000 spectrum analysis software. The active part of the detector and the animals were inside a low-background lead cell. Animals were placed 10 cm above the center of the detector entrance window in a restrain cage (Figure 1A). The holder for the restrain cage was fixed for all the counting campaign.

The measurement consists in recording the net count rate (τ , in counts/s) of the ^{137}Cs photoelectric peak (at 662 keV) which is related to the total body activity (A , in Bq) through the efficiency (ε):

$$A = \frac{\tau}{\varepsilon}$$

The efficiency was calculated using 5 mouse phantoms. They were made of 30 ml polystyrene Sterilin Tubes (Thermo Fischer Scientific, Cergy Pontoise, France) filled with 25 ml 30 % polyacrylamide gel containing graded quantities of ^{137}Cs between 625 Bq and 10 kBq. Counting was performed until the net count under the photoelectric peak was greater than 10 000 events so that the counting uncertainty was less than 1%. Averaging over the 5 measurements with 5 phantoms with increasing activity the efficiency was obtained: $\varepsilon = (3.33 \pm 0.03) 10^{-3}$ counts/s/Bq (Figure 1B). The *in vivo* monitoring protocol used for animals (Hinton *et al.*, 2019; Ishigure *et al.*, 1994) follows the same analysis procedure that is used for human subjects (Beaumont *et al.*, 2017; Griffith *et al.*, 2016).

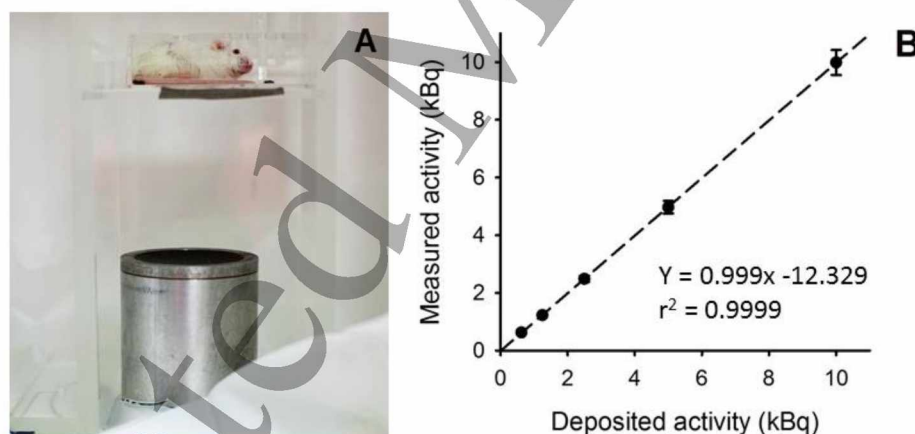


Figure 1: **A:** Animal positioning in the restrain tube over the Ge detector. **B:** Correlation between ^{137}Cs deposited activity in the phantoms and measured activity with the Ge detector. Results are presented as mean \pm SD of three successive measurements. The resulting linear regression parameters and correlation coefficient are indicated in the figure.

1
2
3 *Follow-up of animals, blood sampling and organs treatment:* During the experiment, animals were
4 weighted once a week. A blood sample was obtained once a week (starting 3 days before irradiation
5 and injection) by puncture at the facial vein (allowing to collect a maximal volume of 100 µl of blood
6 per week), without anesthesia, in agreement with the animal care committee. On day 38 post-
7 irradiation, i.e. after a complete cycle of spermatogenesis (which last for 35 days in the mouse)(Ray et
8 al, 2015), animals were anesthetized by isoflurane inhalation and blood was drawn by intracardiac
9 puncture on EDTA-coated tubes (BD biosciences, Le pont de Claix, France). After cervical dislocation,
10 central nervous system (CNS), liver, spleen, kidneys, heart, lungs, digestive tract, striated muscles (left
11 and right), femur (left and right), skin and carcass were harvested, weighted and frozen for later use.
12 Reproductive organs i.e. testis (left and right), epididymis (left and right) and seminal vesicle were
13 removed and carefully cleaned from adipose tissue before being weighted. Plasma was isolated from
14 blood immediately after sampling by centrifugation 10 min at 800 g and frozen for subsequent use.

15
16
17
18
19
20
21
22
23
24
25
26
27
28
29
30 *¹³⁷Cs measurement in organs:* ¹³⁷Cs measurements were done using a Cobra II gamma counter (Perkin-
31 Elmer, Courtabœuf, France) equipped with a 3-inches NaI detector, by placing organs in 14 ml counting
32 tubes (Thermo Fischer Scientific) without any preparation. The calibration coefficient of the detection
33 at 661 keV was determined with a reference curve of serial dilutions of ¹³⁷Cs. Counting time was 60
34 min for most organs, except for organs with low ¹³⁷Cs content for which a 120 min counting time was
35 applied. Detection limit (DL) was calculated according to the following formula:

$$DL = [4\sqrt{2 \times B \times T}] \div T$$

36
37
38
39
40
41
42
43
44
45
46
47
48
49
50
51
52
53
54
55
56
57
58
59
60
where B is the background in counts per minutes (cpm) (obtained by averaging counts of 10 empty
tubes) and T the time of counting. The DL was in the range of 0.07 to 0.2 Bq per sample, depending on
the size and the nature of the organ measured. As a control, 6 samples of all organs from control
animals were counted and gave a ¹³⁷Cs content lower than the detection limit.

Flt3-ligand measurements: Concentration of plasma Flt3-ligand (FL) was measured by ELISA according
to manufacturer's recommendations (Biotechne Ltd, Lille, France).

1
2
3 *Measurement of plasma ions:* Potassium (K⁺), sodium (Na⁺) and chloride (Cl⁻) ions were measured in
4 plasma samples with an automated spectrophotometric system (Konelab 20i, Thermo Fischer
5 Scientific) using potentiometry. Calcium (Ca²⁺) was measured with specific reagents and according to
6 manufacturer's instructions (Thermo Fischer Scientific).
7
8
9

10
11
12 *Statistical analysis:* All results are presented as mean ± standard deviation (SD) from 6 animals per
13 experimental group. Absorbed radiation doses were estimated by summing ¹³⁷Cs activities from all
14 measured organs and carcass and using the RODES software (Locatelli *et al.*, 2017; Miloudi *et al.*, 2017).
15
16
17
18
19
20
21
22
23
24
25
26
27
28
29
30
31
32
33
34
35
36
37
38
39
40
41
42
43
44
45
46
47
48
49
50
51
52
53
54
55
56
57
58
59
60

Relative organ weight was calculated as the percent of organ weight relative to body weight. Statistical and regression analyses were made using Sigmaplot software (SPSS, Paris, France). Comparisons between groups were done using one or two way analysis of variance (ANOVA) or ANOVA on ranks when the Shapiro-Wilk test for normality failed. A Holm-Sidak pairwise multiple comparison procedure including a Bonferroni correction was then used for group comparison. Differences were considered statistically significant for p<0.05.

Results:

Follow up of ^{137}Cs elimination: Control animals and animals injected with ^{137}Cs (either externally irradiated or not) were measured for ^{137}Cs content starting 1 hour post injection until the end of experiment on day 38 post irradiation and injection. Results showed (Figure 2A) a rapid decrease of ^{137}Cs content in all animals. The elimination of ^{137}Cs was significantly increased in irradiated animals as compared to non-irradiated animals (Two way ANOVA, $F_{(2, 255)} = 6.82$, $p = 0.001$, Figure 2), clearly visible after 2 weeks post-irradiation when the retention in the irradiated group was lower than in the contaminated group.

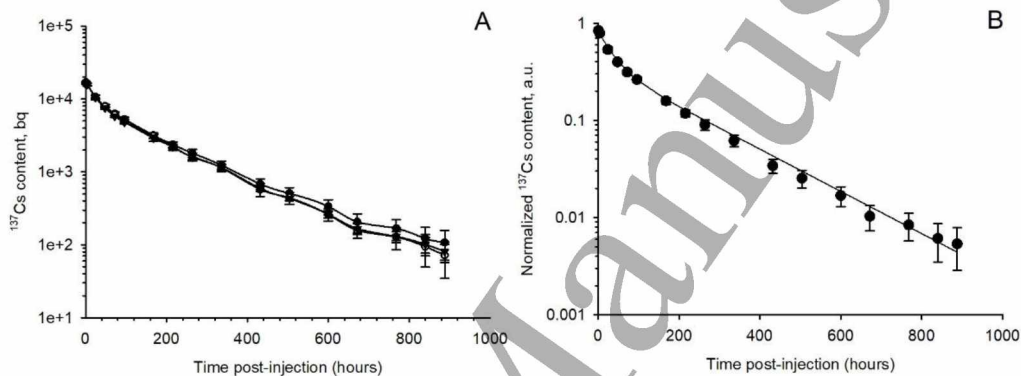


Figure 2: A: Follow-up of ^{137}Cs content in animals either sham-irradiated (closed circle) or irradiated at 1 Gy (open circles) or 5 Gy (closed triangles). Results are the mean \pm SD of 6 animals per experimental group. Animals injected with saline gave results under the detection limit (not shown). A significant difference between the three exposure groups is observed (Two way ANOVA, $F_{(2, 255)} = 6.82$, $p = 0.001$) although no time specific difference was observed. **B:** Curve fit analysis on normalized ^{137}Cs content in animals exposed to ^{137}Cs injection only. The curve fit was obtained with a sum of three exponential decays.

A curve fit analysis was made on each of the three experimental groups receiving ^{137}Cs whatever the external radiation dose, using ^{137}Cs contents (R) normalized to the quantity of ^{137}Cs injected (20 KBq per animal) and a sum of three exponential decays, with the following equation:

$$R(t) = a \times e^{(-\lambda_1 \times t)} + b \times e^{(-\lambda_2 \times t)} + c \times e^{(-\lambda_3 \times t)}$$

Where a, b and c are the respective contribution of each of the exponential component so that the sum of these three parameters is equal to 1 and λ_1 , λ_2 and λ_3 are the decay constants of each exponential component. Result of the curve fit for the group receiving ^{137}Cs alone is shown in figure 2B and values of the parameters for each of the experimental group receiving ^{137}Cs are indicated in table 1. The effective half-live (T_{eff}), corresponding to a retention of 0.5 (Bq/Bq injected), can be calculated from the fit parameters and is also given in table 1.

Table 1: value of parameters of the curve fit for each of the experimental group.

group	^{137}Cs alone	$^{137}\text{Cs} + 1 \text{ Gy}$	$^{137}\text{Cs} + 5 \text{ Gy}$
a	0.17	0.14	0.15
λ_1 (hours $^{-1}$)	2.2	3.25	5.7
b	0.46	0.47	0.49
λ_2 (hours $^{-1}$)	0.028	0.033	0.031
c	0.37	0.39	0.35
λ_3 (hours $^{-1}$)	0.0052	0.0056	0.0055
$T_{1/2}$ effective (hours)	32.6	30.5	29.5

Results indicate that the T_{eff} of ^{137}Cs is shorter in animals receiving an external irradiation dose associated to ^{137}Cs injection as compared to animals receiving ^{137}Cs alone. This shortening of T_{eff} confirms the observed difference in ^{137}Cs elimination between groups (Figure 2A). When looking more precisely to the curve fit results, it appears that the parameter values for the second and the third exponentials are very close for all experimental groups. The main difference appeared for the first exponential, describing the short time retention, with an increase of the value of λ_1 for animals receiving ^{137}Cs + external irradiation. This suggests that the observed decreased retention of ^{137}Cs in

externally irradiated animals is mainly due the rapid elimination component of ^{137}Cs biokinetics during the first hours after ^{137}Cs injection.

^{137}Cs concentration in organs: In order to confirm the difference in ^{137}Cs content of animals according to the external irradiation status, all harvested organs at the end of experiment were weighted and were measured for ^{137}Cs concentration. No significant difference was observed in the body weight of animals (Figure 3A) or in the relative weight of heart (Figure 3B), CNS, liver, spleen, kidney, digestive tract and femurs (not shown) between the experimental groups. By contrast, when looking at the ^{137}Cs concentration in organs, a significant decrease was observed in the femurs (Figure 3C) and in the hearts

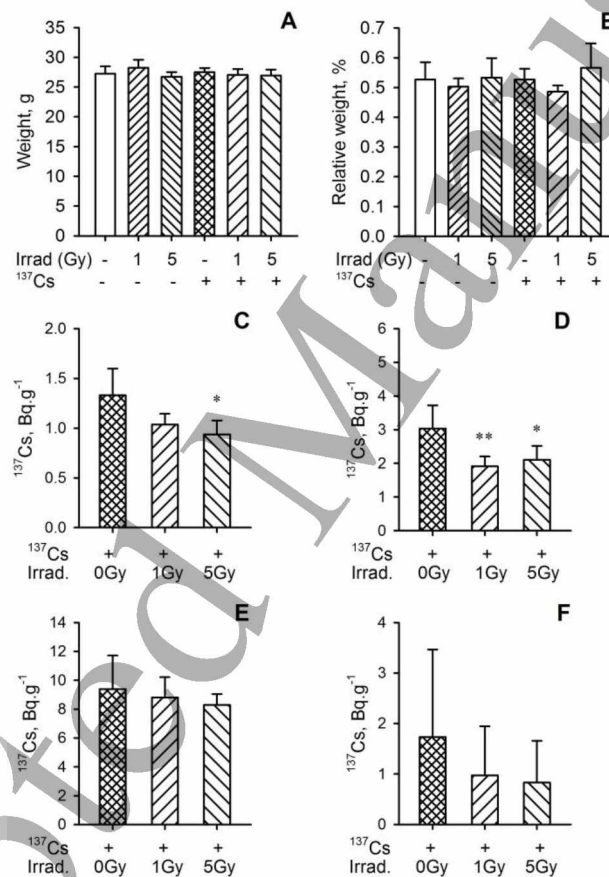


Figure 3: Whole body mass (A) and heart mass relative to the body mass (B) at the end of experiment.

No significant variation of organ mass was observed. ^{137}Cs concentration in heart (C), femurs (D), striated muscles (E) and whole body (F) of mice subjected to combined external and internal exposures. Results are expressed as mean \pm SD of 6 animals per group. Significant differences were observed between exposure groups in the femurs (One way ANOVA, $F_{(2, 17)} = 8.97$, $p < 0.005$) and in the

heart (ANOVA on ranks, $H_{(2)} = 7.83$, $p < 0.05$) but not in other organs. Differences as compared to the sham-irradiated group are indicated for *: $p < 0.05$ and **: $p < 0.001$.

(Figure 3D) of irradiated animals as compared to sham-irradiated and ^{137}Cs injected animals. One has to note that femurs were measured unflushed, i.e. with the intact bone marrow in the femurs. Decreases, although statistically non-significant, were also observed in all tested organs, including striated muscles (Figure 3E) and whole body (Figure 3F). The heart, the kidneys and the striated muscles were already shown to be the most contaminated tissues in previous rat and mouse biokinetic experiments (Bertho *et al.*, 2010; Tournalonias *et al.*, 2010).

In order to confirm these results, a correlation analysis was made between whole body counting with the Ge detector and the sum of ^{137}Cs organ content as measured on day 38. Results showed a very good correlation between the two datasets (Figure 4), confirming the agreement between the two methods of measurements used in this study. This also confirmed the observed decrease in ^{137}Cs whole body content in animals exposed to external irradiation and internal exposure as compared to animals exposed to ^{137}Cs internal exposure only.

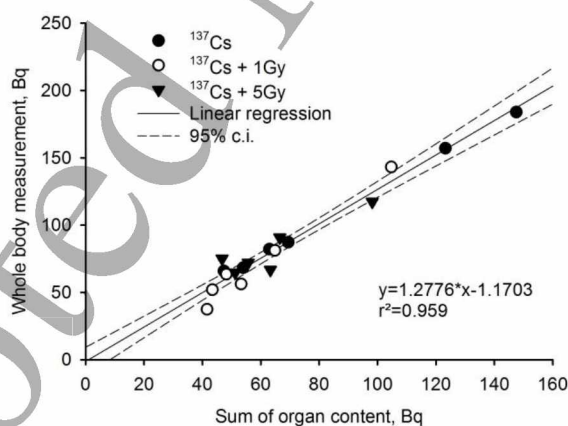
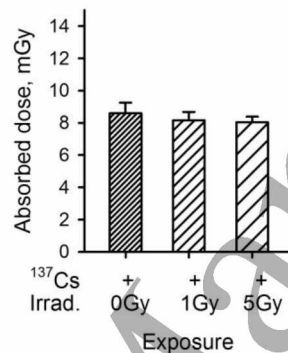


Figure 4: Correlation between whole body content in ^{137}Cs and the sum of measured ^{137}Cs activity in all organs by the end of experiment. Each symbol represents a single animal. Closed circles: ^{137}Cs + sham irradiation; open circles: ^{137}Cs + 1 Gy irradiation; closed triangles: ^{137}Cs + 5 Gy.

1
2
3 Solid line represents the linear regression of all data and dotted lines the 95% confidence
4 interval (c.i.).
5
6
7
8
9

10 *Absorbed radiation doses induced by ^{137}Cs :* To evaluate the additional absorbed radiation dose due to
11 ^{137}Cs injection, we used the RODES software (Miloudi *et al.*, 2017; Locatelli *et al.*, 2017) with the
12 individual whole body measurements of ^{137}Cs during the experiment. Results (Figure 5) showed that
13 the range of additional dose due to ^{137}Cs injection estimated in each individual animal was between
14 7.4 mGy and 9.3 mGy without any significant difference according to the group of external irradiation.
15
16
17
18
19
20



21
22
23
24
25
26
27
28
29
30
31
32
33 **Figure 5:** Additional absorbed doses due ^{137}Cs injection estimated using individual data from Figure 2
34 and the RODES software (Locatelli *et al.*, 2017; Miloudi *et al.*, 2017). Results are mean \pm SD
35 of 6 animals per experimental group. Differences between groups are non-significant (One
36 way ANOVA, $F_{(2, 15)} = 1.953$, n.s.).
37
38
39
40
41
42
43
44

45 *Differential biological consequences of co-exposure:* Although the added absorbed radiation dose may
46 not induce significant biological changes as compared to the effect of high dose external irradiation,
47 we examined biological endpoints for the two of the most radiosensitive physiological systems for
48 tissue effects, the hematopoietic system and the testis. We also measured plasma ions since Cs^+ is a
49 physiological analog of K^+ (Leggett *et al.*, 2003), which is essential to cardiovascular and muscular
50 physiology.
51
52
53
54
55
56
57
58
59
60

The hematopoietic system was evaluated using plasma Flt3-ligand (FL) concentration as a bio-indicator of radiation-induced damage to the hematopoietic system (Prat *et al.*, 2006; Bertho *et al.*, 2010). FL was measured three days before exposure (d-3), 3 days after exposure (at the beginning of the hematopoietic syndrome, d3) and at the end of experiment (d38). Results indicated that there was a significant change in plasma FL concentration depending on the external radiation dose at day 3 post-exposure ($F_{(2, 28)} = 87.0$, $p < 0.001$) and by the end of experiment ($F_{(2, 29)} = 11.3$, $p < 0.001$) (Figure 6A). This is in line with the radiation induced bone marrow aplasia induced by external irradiation, as previously described (Prat *et al.*, 2006). By contrast, ^{137}Cs co-exposure did not influence the external radiation dose-dependent increase in FL regardless of time post exposure. These results showed that the ^{137}Cs internal exposure did not induce a change in the effect of external exposure on the hematopoietic system, irrespective of the external radiation dose.

With respect to testis, we measured the testis weight as a surrogate of the number of cells (and especially the number of germ cells) present in each of the testis by the end of the experiment. Results (Figure 6B) showed a significant dose dependent decrease in testis weight according to the external radiation dose ($F_{(2, 65)} = 459$, $p < 0.001$). It is well known that spermatogenesis is severely impaired by high dose external irradiation (De Felice *et al.*, 2019; Meistrich *et al.*, 1978). Consistent with this, a significant decrease in testis weight was evident at the lowest external dose used, 1 Gy (Pairwise

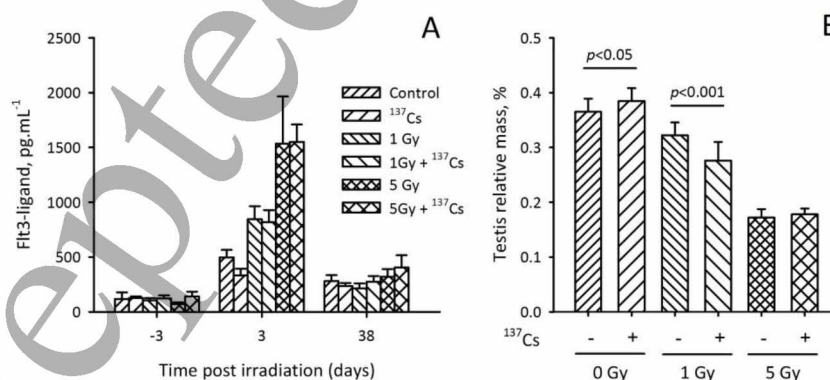


Figure 6: A: Plasma FL concentration according to the time post irradiation. Data are presented as mean \pm SD of 3 to 5 animals per group. Significant changes were observed after the external radiation exposure for d3 ($F_{(2, 28)} = 87.0$, $p < 0.001$) and d38 ($F_{(2, 29)} = 11.3$, $p < 0.001$), but not

1
2
3 after the ^{137}Cs exposure (d-3: $F_{(1, 14)} = 4.1$, n.s.; d3: $F_{(1, 28)} = 0.7$, n.s.; d38: $F_{(1, 29)} = 2.25$, n.s.). **B:**
4
5 Relative testis weight in different exposure groups (n=6 per group). Significant changes were
6
7 observed after the external radiation dose ($F_{(2, 65)} = 459$, $p < 0.001$) and after the ^{137}Cs exposure
8
9 ($F_{(1, 65)} = 4.75$, $p = 0.033$).

10
11
12
13
14 multiple comparison procedure, $p < 0.001$). This external radiation induced reduction of testis weight
15
16 was further reduced if 1 Gy irradiation was combined with ^{137}Cs exposure ($F_{(1, 65)} = 4.75$, $p = 0.033$). This
17
18 suggests that the combination of external irradiation with internal ^{137}Cs exposure induced a slowdown
19
20 of testis physiology recovery after high-dose radiation damage. Such an effect was not observed after
21
22 5 Gy irradiation. One may suggest that at this high radiation dose, the effect of ^{137}Cs internal exposure
23
24 might be masked by the strong effect of external irradiation. Consistent with this, we observed a
25
26 seminal vesicle weight reduction after 5 Gy exposure (data not shown) confirming the tissue effect of
27
28 5 Gy external exposure on testis physiology. Surprisingly, an increase in testis weight was observed in
29
30 animals exposed to ^{137}Cs alone as compared to the unexposed control group (Pairwise multiple
31
32 comparison procedure, $p < 0.05$). One has to note that animals were sacrificed at day 38 post
33
34 irradiation, i.e. after the completion of a complete cycle of spermatogenesis which last for 35 days in
35
36 the mouse (Ray *et al.*, 2015). This result suggests that the ^{137}Cs exposure may induce a modification
37
38 during the cycle of spermatogenesis.

39
40
41
42
43 Results of ion measurements showed no significant change in Ca^{2+} (Figure 7A) and Na^+ (Figure 7C)
44
45 concentrations, irrespective of treatment group. By contrast, a significant change was observed for K^+
46
47 (Two way ANOVA, $F_{(5, 35)} = 3.149$, $p = 0.021$, Figure 7B) and Cl^- concentrations ($F_{(5, 35)} = 2.675$, $p = 0.047$,
48
49 Figure 7D). A significant decrease (12.6%) in K^+ concentration was observed for the 5 Gy group as
50
51 compared to the control, whereas there was no significant difference between 5 Gy + ^{137}Cs group and
52
53 control group and between ^{137}Cs group and control group. A slight decrease (7.1%) in K^+ concentration,
54
55 although not significant, was also observed for the 1 Gy group with a return to control level in the
56
57
58
59
60

presence of ^{137}Cs . This suggested that external irradiation induced a decrease in K^+ concentration which returned to control values in the presence of ^{137}Cs .

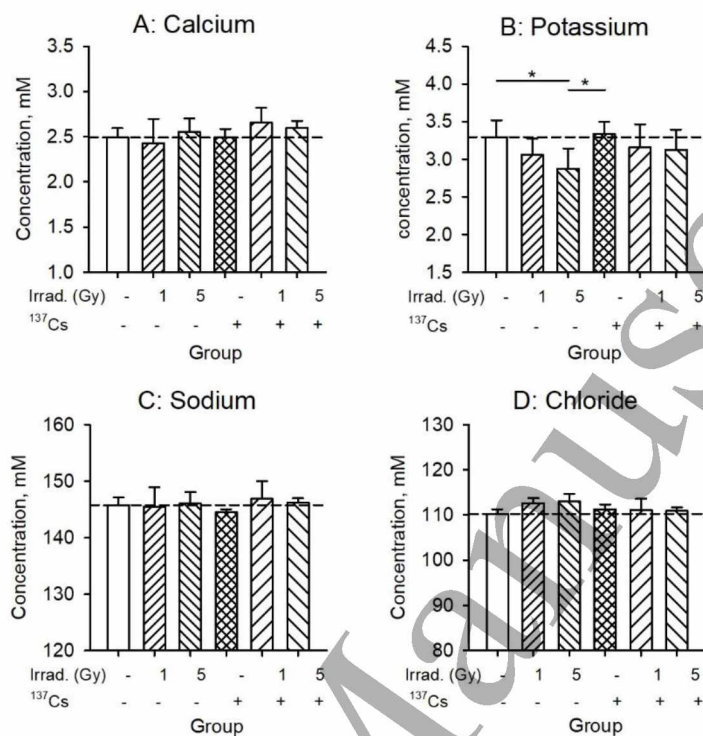


Figure 7: Measurement of calcium (A), potassium (B), Sodium (C) and Chloride (D) in the plasma of animals at day 38 post irradiation. Two way ANOVA analysis showed a significant change for potassium ($F_{(5, 35)} = 3.149$, $p = 0.021$, figure 7B) and chloride ($F_{(5, 35)} = 2.675$, $p = 0.047$, figure 7D). Differences between groups are indicated as *: $p < 0.05$.

Discussion:

The present study demonstrates that a co-exposure to external irradiation and internal contamination with ^{137}Cs induces differential effects as compared to single exposure, either external or internal. In particular, for both external radiation doses used, this resulted in an accelerated elimination of ^{137}Cs at short times after injection and consequently a reduction of retained ^{137}Cs over the duration of follow-up, as demonstrated by the curve fit analysis of biokinetics data. Interestingly, the best fit was obtained taking into account three exponential components, suggesting the existence of three main compartment of ^{137}Cs retention in the mouse model. The nature of these three different compartments remains elusive, since a detailed analysis of ^{137}Cs content in various organs was not made during the course of the experiment in the present study. However, this model is compatible with the currently admitted biokinetics of ^{137}Cs as described by others (ICRP 2017). This curve fit analysis showed that a decrease in T_{eff} was observed when an external irradiation was added to the ^{137}Cs injection. This decrease in T_{eff} was mainly due to an increased elimination rate of ^{137}Cs during the first hours after irradiation. Thereafter, the rate of ^{137}Cs elimination was similar in the three experimental group. This may be explain by a possible radiation-induced increased permeability of the endothelial barrier (Gabrys *et al.*, 2007) or to the modification of intestinal barrier integrity, which in turn induces a loss of electrolytes at high doses (Dublineau *et al.*, 2007) during the early period after irradiation.

These results are somewhat inconsistent with a recent study (Calvi *et al.*, 2019) showing that animals co-exposed to 6 Gy external irradiation plus 3.7×10^6 Bq of ^{137}Cs demonstrated a reduction of ^{137}Cs elimination. The consequence of this slowdown of ^{137}Cs elimination was an increase in absorbed dose due to ^{137}Cs injection from 2.5 Gy up to 3.2 Gy. Thus animals receiving both external irradiation and internal contamination received a total absorbed dose estimated to 9.2 Gy, as compared to the $\text{LD}_{50/30}$ of approximately 8 Gy in the C57BL/6J mouse strain as stated by the authors (Calvi *et al.*, 2019). Thus it is conceivable that co-exposed animals showed a 40% death rate as well as increased long-term defects in hematopoiesis in surviving animals with a total absorbed dose dependence (Calvi *et al.*,

2019). By contrast, in our study using lower radiation doses and ^{137}Cs quantities, the absorbed dose due to ^{137}Cs injection is very low, between 7.4 and 9.3 mGy, i.e. less than 1% of the 1 Gy external radiation dose. The faster elimination of ^{137}Cs induced a slight but non-significant reduction of absorbed dose due to ^{137}Cs injection. Thus the additional absorbed dose due to ^{137}Cs injection was unlikely to be responsible for the observed biological effect. However, both studies are consistent in demonstrating that a combination of an external irradiation and an internal contamination give rise to unexpected biological effects.

Interestingly, not only the elimination of ^{137}Cs was modified by external irradiation, but also the homeostasis of K^+ was modified in 5 Gy irradiated animals, and returned to control values in co-exposed animals. Also, a slight, although non-significant, decrease in K^+ was observed after 1 Gy irradiation. This result suggests that external irradiation at high doses modify the homeostasis of some ions in the blood, possibly due to the radiation-induced increased permeability of the endothelial barrier (Gabrys *et al.*, 2007) or to the modification of intestinal barrier integrity, which in turn induces a loss of electrolytes at high doses (Dublineau *et al.*, 2007). Such mechanisms may also explain the lower retention of ^{137}Cs in heart and femur, two organs that were previously shown to accumulate ^{137}Cs (Tourlonias *et al.*, 2010; Bertho *et al.*, 2010). One have to note that cesium is a physiological analog of potassium (ICRP 2017) and that potassium concentration in the blood is tightly regulated. However, the mechanism by which the exposure to a low quantity of ^{137}Cs correlates with a return to normal levels of potassium in the blood remains elusive. Unfortunately, we were unable to test for a longitudinal follow-up of ion homeostasis in our animals, since the volume of blood drawn during the course of this experiment was limited. It should be of interest to verify if such changes in ion homeostasis have occurred earlier after exposure.

Interestingly, the exposure to ^{137}Cs alone also induced an increase in testis weight, one of the most radiosensitive organs for tissue effects of ionizing radiation. We previously showed that ^{137}Cs accumulated in the testis during chronic contamination (Tourlonias *et al.*, 2010). The presence of ^{137}Cs in the testis in the absence of external exposure may explain the observed change in testis physiology.

1
2
3 By contrast, the decrease in testis weight observed after a combination of 1 Gy external irradiation and
4
5 ^{137}Cs exposure is more intriguing. In fact, the added radiation dose due to ^{137}Cs exposure is limited to
6
7 approximately 1% of the dose due to external exposure while the observed testis weight decrease is
8
9 about 15 % as compared to the external irradiation only. Thus the observed decrease in testis weight
10
11 is not proportional to the absorbed radiation dose due to ^{137}Cs . The underlying mechanisms remain
12
13 elusive, but this result confirms that, at least in our specific controlled conditions, the addition of an
14
15 external exposure with an internal contamination with radionuclides may induce not only a change in
16
17 the biokinetics of internalized radionuclides, but also unexpected biological effects.

20
21 Experimental data on combined internal contamination plus external radiation exposures are very
22
23 sparse, and are mainly limited to very early studies with a combination of ^{137}Cs and ^{90}Sr , but without
24
25 any comparison with single radionuclide exposure (Nishio, 1968, 1969, 1971; Nishio *et al.*, 1968). It is
26
27 thus difficult to compare our study of combined exposures with work from others, even with the study
28
29 by Calvi *et al.* (Calvi *et al.*, 2019). In this later study, the effect of the combined exposure is clearly due
30
31 to the addition of external plus internal high dose radiation exposure, while in our study, the observed
32
33 biological effects appear as independent from the radiation dose. Our results could be explained only
34
35 partly by the chemical effect of cesium, known to act on potassium channels in muscles (Cecchi *et al.*,
36
37 1987). The quantity of cesium injected in the animals corresponding to 20 KBq, estimated to 2.28×10^{-9}
38
39 mole per animal including the stable cesium used as a carrier, is well below the LD_{50} in the mouse
40
41 model (ATSDR, 2004). In chemical toxicology studies, such differential effects of exposures to mixtures
42
43 of chemical toxicants were already described. For instance, a study testing different mixtures of
44
45 pollutants showed that in some cases, supra-additive effects of the mixtures were observed as
46
47 compared to what was expected from the exposure to individual pollutants (Crepet *et al.*, 2013).
48
49 Another study using two mixtures of 14 or 19 pollutants showed that these mixtures induced toxic
50
51 effects in various *in vivo* and *in vitro* models while used at concentrations below their known toxic
52
53 threshold (Carvalho *et al.*, 2014). Considering the results of these chemotoxicological studies, it would
54
55 be reasonable to suggest that combined internal and external radiation exposures produce biological
56
57
58
59
60

1
2
3 effects that are not obvious to predict. Our model of co-exposure to external irradiation and internal
4
5 contamination is clearly relevant of the exposure situation of populations living on a contaminated
6
7 territory, although the external radiation dose is much higher than what could be encountered in a
8
9 contaminated territory (Bertho et al, 2019). Therefore, it should be of interest to study the biokinetics
10
11 and the biological effects of mixed exposures, combining external irradiation at relevant
12
13 environmental dose rates and mixtures of radionuclides such as $^{137}\text{Cs} + ^{90}\text{Sr}$, the two main radionuclides
14
15 remaining in the environment on the long term after a nuclear accident.
16
17
18
19
20
21

22 **Acknowledgements:**

23
24
25 The authors wish to thanks the secretarial assistance of Keltoum Mediana, the expert daily work of
26
27 the animal care facility team, the fruitful discussions with D. Denais-Lalievie and the critical reading of
28
29 the manuscript by D. Klokov. This work was supported by institutional funding of IRSN, under the
30
31 program number D3-P8-01-01.
32
33
34
35
36
37

38 **References:**

39
40 ATSDR 2004 Toxicological profile for Cesium. (Atlanta, GA: U.S. Department of Health and Human
41
42 Services, Public Health Service) pp 1-306
43
44
45 Beaumont T, Ideias P C, Rimlinger M, Broggio D and Franck D 2017 Development and test of sets of 3D
46
47 printed age-specific thyroid phantoms for (^{131}I) measurements *Physics in Medicine and*
48
49 *Bioogyl* **62** 4673-93
50
51
52 Bernhardsson C, Zvonova I, Raaf C and Mattsson S 2011 Measurements of long-term external and
53
54 internal radiation exposure of inhabitants of some villages of the Bryansk region of Russia after
55
56 the Chernobyl accident *The Science of the total environment* **409** 4811-7
57
58
59
60

- 1
2
3 Bertho J M, Faure M C, Louiba S, Turlonias E, Stefani J, Siffert B, Paquet F and Dublineau I 2011
4
5 Influence on the mouse immune system of chronic ingestion of ^{137}Cs *Journal of Radiological*
6
7 *Protection* **31** 25-39
8
9
10 Bertho J M, Louiba S, Faure M C, Turlonias E, Stefani J, Siffert B, Paquet F and Dublineau I 2010
11
12 Biodistribution of (^{137}Cs) in a mouse model of chronic contamination by ingestion and effects
13
14 on the hematopoietic system *Radiation and environmental biophysics* **49** 239-48
15
16
17 Bertho JM, Maître M, Croüail P, Naito W, Shkliarava N, Mostovenko A, Jones K and Simon-Cornu M
18
19 2019 Assessment of population exposure at the edge of the exclusion zone 32 years after the
20
21 Chernobyl accident: methods and preliminary results *Radioprotection* **54(4)** 247-257
22
23
24 Calvi L M, Frisch B J, Kingsley P D, Koniski A D, Love T M, Williams J P and Palis J 2019 Acute and late
25
26 effects of combined internal and external radiation exposures on the hematopoietic system
27
28 *International journal of radiation biology* 1-15. DOI: 10.1080/09553002.2019.1644932
29
30
31 Carvalho R N, Arukwe A, Ait-Aissa S, Bado-Nilles A, Balzamo S, Baun A, Belkin S, Blaha L, Brion F, Conti
32
33 D, Creusot N, Essig Y, Ferrero V E, Flander-Putrlle V, Furrhacker M, Grillari-Voglauer R, Hogstrand
34
35 C, Jonas A, Kharlyngdoh J B, Loos R, Lundebye A K, Modig C, Olsson P E, Pillai S, Polak N, Potalivo
36
37 M, Sanchez W, Schifferli A, Schirmer K, Sforzini S, Sturzenbaum S R, Softeland L, Turk V,
38
39 Viarengo A, Werner I, Yagur-Kroll S, Zounkova R and Lettieri T 2014 Mixtures of chemical
40
41 pollutants at European legislation safety concentrations: how safe are they? *Toxicological*
42
43 *Sciences* **141** 218-33
44
45
46 Cecchi X, Wolff D, Alvarez O and Latorre R 1987 Mechanisms of Cs^+ blockade in a Ca^{2+} -activated K^+
47
48 channel from smooth muscle *Biophysical journal* **52** 707-16
49
50
51 Chumak A, Thevenon C, Gulaya N, Guichardant M, Margitich V, Bazyka D, Kovalenko A, Lagarde M and
52
53 Prigent A F 2001 Monohydroxylated fatty acid content in peripheral blood mononuclear cells
54
55 and immune status of people at long times after the Chernobyl accident *Radiation research*
56
57 **156** 476-87
58
59
60

- 1
2
3 Cooper E L, Zeiller E, Ghods-Esphahani A, Makarewicz M, Schelenz R, Frindik O, Heilgeist M and Kalus
4
5 W 1992 Radioactivity in food and total diet samples collected in selected settlements in the
6
7 USSR *J Environ Radioact* **17** 147-57
8
9
10 Crepet A, Heraud F, Bechaux C, Gouze M E, Pierlot S, Fastier A, Leblanc J, Le Hegarat L, Takakura N,
11
12 Fessard V, Tressou J, Maximilien R, de Sousa G, Nawaz A, Zucchini-Pascal N, Rahmani R,
13
14 Audebert M, Graillet V and Cravedi J P 2013 The PERICLES research program: an integrated
15
16 approach to characterize the combined effects of mixtures of pesticide residues to which the
17
18 French population is exposed *Toxicology* **313** 83-93
19
20
21 De Felice F, Marchetti C, Marampon F, Casciulli G, Muzii L and Tombolini V 2019 Radiation effects on
22
23 male fertility *Andrology* **7** 2-7
24
25
26 Dublineau I, Grandcolas L, Grison S, Baudelin C, Paquet F, Voisin P, Aigueperse J and Gourmelon P 2007
27
28 Modifications of inflammatory pathways in rat intestine following chronic ingestion of
29
30 depleted uranium *Toxicological Sciences* **98** 458-68
31
32
33 Ebrahimian T G, Beugnies L, Surette J, Priest N, Gueguen Y, Gloaguen C, Benderitter M, Jourdain J R
34
35 and Tack K 2018 Chronic Exposure to External Low-Dose Gamma Radiation Induces an Increase
36
37 in Anti-inflammatory and Anti-oxidative Parameters Resulting in Atherosclerotic Plaque Size
38
39 Reduction in ApoE(-/-) Mice *Radiation research* **189** 187-96
40
41
42 Gabrys D, Greco O, Patel G, Prise K M, Tozer G M and Kanthou C 2007 Radiation effects on the
43
44 cytoskeleton of endothelial cells and endothelial monolayer permeability *Int J Radiat Oncol*
45
46 *Biol Phys* **69** 1553-62
47
48
49 Griffith R, Bergmann H, Fry F A, Hickman D, Genicot J-L, Malatova I, Neton J, Rahola T and Wahl W 2016
50
51 Report 69 *Journal of the International Commission on Radiation Units and Measurements* **3** 3-
52
53 120
54
55
56 Grison S, Martin J C, Grandcolas L, Banzet N, Blanchardon E, Tournalonias E, Defoort C, Fave G, Bott R,
57
58 Dublineau I, Gourmelon P and Souidi M 2012 The metabolomic approach identifies a biological
59
60 signature of low-dose chronic exposure to cesium 137 *Journal of Radiation research* **53** 33-43

- 1
2
3 Gueguen Y, Lestaevel P, Grandcolas L, Baudelin C, Grison S, Jourdain J R, Gourmelon P and Souidi M
4
5 2008 Chronic contamination of rats with ¹³⁷cesium radionuclide: impact on the
6
7 cardiovascular system *Cardiovascular toxicology* **8** 33-40
8
9
10 Handl J, Beltz D, Botsch W, Harb S, Jakob D, Michel R and Romantschuk L D 2003 Evaluation of
11
12 radioactive exposure from ¹³⁷Cs in contaminated areas of Northern Ukraine *Health physics*
13
14 **84** 502-17
15
16 Hinton T G, Byrne M E, Webster S C, Love C N, Broggio D, Trompier F, Shamovich D, Horloogin S, Lance
17
18 S L, Brown J, Dowdall M and Beasley J C 2019 GPS-coupled contaminant monitors on free-
19
20 ranging Chernobyl wolves challenge a fundamental assumption in exposure assessments
21
22 *Environment international* **133** 105-152
23
24
25 ICRP 2017 Occupational intakes of radionuclides: part 3. ICRP publication 137. Annals of the ICRP
26
27 **46**(3/4) 137-164
28
29
30 Ishigure N, Nakano T, Enomoto H, Fukuda S, Iida H, Oghiso Y, Sato H, Takahashi S, Yamada Y, Koizumi
31
32 A and et al. 1994 Lung retention of Pu following inhalation of PuO₂ in rats measured using a
33
34 whole body counter *Journal of Radiation research* **35** 16-25
35
36
37 Ivanov V K, Maksioutov M A, Chekin S Y, Petrov A V, Biryukov A P, Kruglova Z G, Matyash V A, Tsyb A F,
38
39 Manton K G and Kravchenko J S 2006 The risk of radiation-induced cerebrovascular disease in
40
41 Chernobyl emergency workers *Health physics* **90** 199-207
42
43
44 Jourdain J R, Landon G, Clero E, Doroshchenko V, Silenok A, Kurnosova I, Butsenin A, Denjoy I, Franck
45
46 D, Heuze J P and Gourmelon P 2018 Is exposure to ionising radiation associated with childhood
47
48 cardiac arrhythmia in the Russian territories contaminated by the Chernobyl fallout? A cross-
49
50 sectional population-based study *BMJ open* **8** e019031
51
52
53 Kuzmenok O, Potapnev M, Potapova S, Smolnikova V, Rzhetsky V, Yarilin A A, Savino W and Belyakov
54
55 I M 2003 Late effects of the Chernobyl radiation accident on T cell-mediated immunity in
56
57 cleanup workers *Radiation research* **159** 109-16
58
59
60

- 1
2
3 Le Gallic C, Phalente Y, Manens L, Dublineau I, Benderitter M, Gueguen Y, Lehoux S and Ebrahimian T
4
5 G 2015 Chronic Internal Exposure to Low Dose ^{137}Cs Induces Positive Impact on the Stability
6
7 of Atherosclerotic Plaques by Reducing Inflammation in ApoE $^{-/-}$ Mice *PLoS one* **10** e0128539
8
9
10 Leggett RW, Williams LR, Melo DR and Lipsztein JL 2003 A physiologically based biokinetic model for
11
12 cesium in the human body. *Science of Total Environment* **317**(1-3):235-55
13
14 Lindgren A, Stepanova E, Vdovenko V, McMahon D, Litvinetz O, Leonovich E and Karmaus W 2013
15
16 Individual whole-body concentration of $^{137}\text{Cesium}$ is associated with decreased blood counts
17
18 in children in the Chernobyl-contaminated areas, Ukraine, 2008–2010 *Journal of Exposure*
19
20 *Science And Environmental Epidemiology* **25** 334
21
22
23 Locatelli M, Miloudi H, Autret G, Balvay D, Desbree A, Blanchardon E and Bertho J M 2017 RODES
24
25 software for dose assessment of rats and mice contaminated with radionuclides *Journal of*
26
27 *radiological protection* **37** 214-29
28
29
30 McMahon D M, Vdovenko V Y, Karmaus W, Kondrashova V, Svendsen E, Litvinetz O M and Stepanova
31
32 Y I 2014 Effects of long-term low-level radiation exposure after the Chernobyl catastrophe on
33
34 immunoglobulins in children residing in contaminated areas: prospective and cross-sectional
35
36 studies *Environ Health* **13** 36
37
38
39 Meistrich M L, Hunter N R, Suzuki N, Trostle P K and Withers H R 1978 Gradual regeneration of mouse
40
41 testicular stem cells after exposure to ionizing radiation *Radiation research* **74** 349-62
42
43
44 Miloudi H, Locatelli M, Autret G, Balvay D, Desbree A, Blanchardon E and Bertho J M 2017 Application
45
46 of rodes software to experimental biokinetic data for dose assessment in mice and rats *Journal*
47
48 *of radiological protection* **37** 564-83
49
50
51 Nikula K J, Muggenburg B A, Chang I Y, Griffith W C, Hahn F F and Boecker B B 1995 Biological effects
52
53 of $^{137}\text{CsCl}$ injected in beagle dogs *Radiation research* **142** 347-61
54
55
56 Nishio K 1968 Effects of (^{90}Sr) and (^{137}Cs) administered continuously upon mice (V). *Annual report of*
57
58 *the radiation center of Osaka prefecture* **9** 123-8
59
60

- 1
2
3 Nishio K 1969 Effects of (90)Sr and (137)Cs administered continuously upon mice (VII). Life-span of
4 mice from the 11th to 20th generations. *Annual report of the radiation center of Osaka*
5 *prefecture* **10** 90-1
6
7
8
9
10 Nishio K 1971 Effects of (90)Sr and (137)Cs administered continuously upon mice (VIII). Abnormality of
11 reproductive function. *Annual report of the radiation center of Osaka prefecture* **12** 111-2
12
13
14 Nishio K, Megumi T and Yonezawa M 1968 Effects of (90)Sr and (137)Cs administered continuously
15 upon mice (VI). Abnormality of reproductive function. *Annual report of the radiation center of*
16 *Osaka prefecture* **9** 86-92
17
18
19
20
21
22 Prat M, Demarquay C, Frick J, Dudoignon N, Thierry D and Bertho J M 2006 Use of flt3 ligand to evaluate
23 residual hematopoiesis after heterogeneous irradiation in mice *Radiation research* **166** 504-11
24
25
26
27 Ray D, Pitts P B, Hogarth C A, Whitmore L S, Griswold M D and Ye P 2015 Computer simulations of the
28 mouse spermatogenic cycle *Biology Open* **4** 1
29
30
31
32 Synhaeve N, Musilli S, Stefani J, Nicolas N, Delissen O, Dublineau I and Bertho J M 2016 Immune System
33 Modifications Induced in a Mouse Model of Chronic Exposure to (90)Sr *Radiation research* **185**
34 267-84
35
36
37
38
39 Tournalias E, Bertho J M, Gurriaran R, Voisin P and Paquet F 2010 Distribution of 137Cs in rat tissues
40 after various schedules of chronic ingestion *Health physics* **99** 39-48
41
42
43 UNSCEAR 2000 Annex J: Exposure and effects of the Chernobyl accident. In: *Sources and effects of*
44 *ionizing radiations. Volume II: effects* ed U Nations (New-York: United Nations) pp 453-551
45
46
47
48 Vieira Dias J, Gloaguen C, Kereselidze D, Manens L, Tack K and Ebrahimian T G 2018 Gamma Low-Dose-
49 Rate Ionizing Radiation Stimulates Adaptive Functional and Molecular Response in Human
50 Aortic Endothelial Cells in a Threshold-, Dose-, and Dose Rate-Dependent Manner *Dose-*
51 *response : a publication of International Hormesis Society* **16** 1559325818755238
52
53
54
55
56
57
58
59
60

1
2
3
4
5
6
7
8
9
10
11
12
13
14
15
16
17
18
19
20
21
22
23
24
25
26
27
28
29
30
31
32
33
34
35
36
37
38
39
40
41
42
43
44
45
46
47
48
49
50
51
52
53
54
55
56
57
58
59
60

Accepted Manuscript