



Effect of agricultural practices and climate on carbon storage potential of two contrasted permanent tropical Pastures – case study French Guiana

Katja Klumpp, Clement Stahl, Robert R. Falcimagne, Olivier Darsonville, Benoît Burban, Vincent V. Blanfort, Philippe Lecomte

► To cite this version:

Katja Klumpp, Clement Stahl, Robert R. Falcimagne, Olivier Darsonville, Benoît Burban, et al.. Effect of agricultural practices and climate on carbon storage potential of two contrasted permanent tropical Pastures – case study French Guiana. Coloque annuel ICOS, Sep 2014, Bruxelles, Belgium. hal-02797075

HAL Id: hal-02797075

<https://hal.inrae.fr/hal-02797075>

Submitted on 5 Jun 2020

HAL is a multi-disciplinary open access archive for the deposit and dissemination of scientific research documents, whether they are published or not. The documents may come from teaching and research institutions in France or abroad, or from public or private research centers.

L'archive ouverte pluridisciplinaire **HAL**, est destinée au dépôt et à la diffusion de documents scientifiques de niveau recherche, publiés ou non, émanant des établissements d'enseignement et de recherche français ou étrangers, des laboratoires publics ou privés.



Katja Klumpp¹, Clément Stahl^{1-2 *}, Robert Falcimagne¹, Olivier Darsonville¹, Benoit Burban², Vincent Blanfort¹⁻³, Lecomte Philippe³

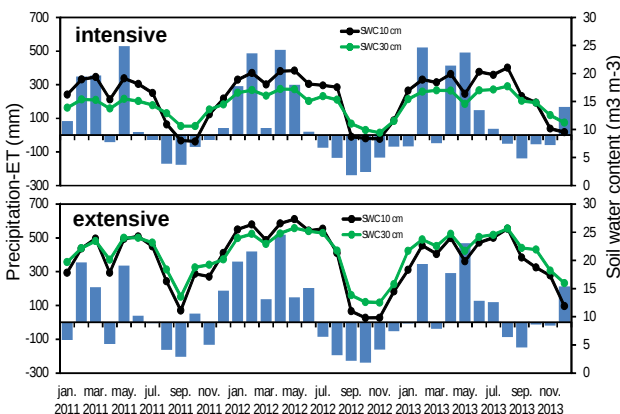
(1) INRA, UR 874, Research Unit on permanent grasslands, 63100 Clermont Ferrand, France (2) CIRAD, UMR Selmet, Campus Agronomique, BP 709, 97387 Kourou Cedex French Guiana (3) CIRAD, UMR Selmet, Campus international de Baillarguet - TA C-112/ A 34398 Montpellier Cedex 5 * clement.stahl@ecofog.gf

More than 15% of Amazon forest has been converted to pastures in last decades. Forests contain more C than a pasture, however, only little information is available on the potential C sequestration of those pastures in the long term and with respect to climatic variability. A better insight on how climatic variability and agricultural management affects net carbon exchange (i.e. NEE) of cattle pastures are, thus, important to increase C storage and to prevent from increasing greenhouse gas emission.

AIMS

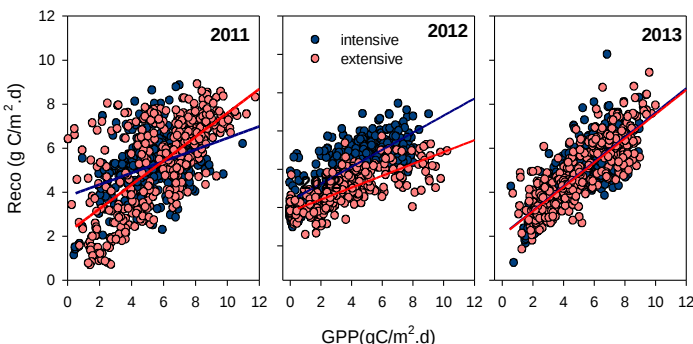
- Investigate the drought effect on the carbon storage in two contrasted agricultural management.
- Evaluate the specific consequences of the climatic variability (i.e dry and wet season) on the GPP and Reco.

RESULTS



Seasonal variation of water conditions indicate that during the 3 years, 2012 was the driest years, with 260 days of P-ETP<0 compared to 215 days in 2013, which was the wettest year.

g C/m2	Reco		GPP	
year	extensive	intensive	extensive	intensive
2011	1950	1909	2123	1930
2012	1026	1545	1105	1536
2013	1735	1921	1807	2112



The part of GPP respired (Reco) is similar for both treatments for the wet year (2013), while a higher fraction of GPP is respired in dry years by the intensive grazing, which may explain the lower NEE (less negative) during these years.

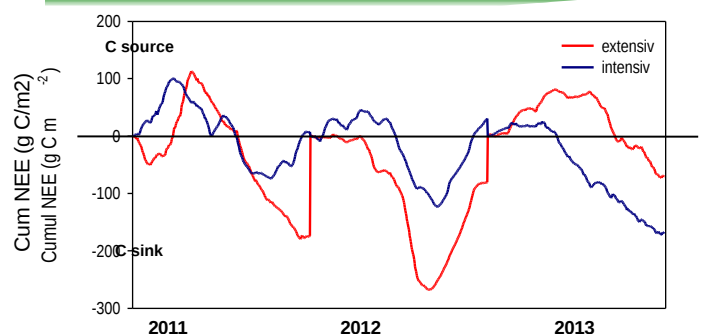
MATERIELS & METHODS

This study was conducted in two farms in French Guiana, South America (5°16'54"N, 52°54'44"W). Mean annual rainfall is 3041 mm and mean air temperature is around 25.7 °C. The study focused on a hilltop zone with clayey soils, classified as Ferralsols or Acrisols.

The pastures were established in 1978 (**old**) and 2008 (**young**) after deforestation of native rainforest and were grazed rotationally by livestock at low and high stocking density. The vegetation in the pastures was dominated by *Brachiaria humidicola*.

Young pasture "ETVM", were grazed at **high** stocking density 4.4 LSU ha⁻¹ yr⁻¹ (**intensive**). **Old pasture** "Bio Savane", were grazed at **low** stocking density 1.4 LSU ha⁻¹ yr⁻¹ (**extensive**).

Since 2010, we measured C sink potential by eddy covariance technique of the two pastures. Eddy covariance flux measurements followed European flux guidelines, and gaps and poor quality data were reconstructed using the gap-filling strategy of Reichstein et al. (2005).



The two pastures show a intra-annual variation of net carbon storage (NEE) as an effect of soil water conditions modulated by the management. Extensive management allows a better net C storage for dry years (2012), while during the wet years intensive grazing seems to be an advantage (2013).

t C ha-1 an-1	2011	2012	2013	mean
intensive	+0.7	+0.3	-1.7	-0.4
extensive	-1.7	-0.8	-0.7	-1.1

Annual Net Ecosystem Exchange (NEE) in the two pastures

In the year with a long period of consecutive dry days (e.g. 2012 - 128days), GPP and Reco are higher for the intensive compared to extensive grazing.

CONCLUSION

- Intensity of dry season is different between dry and wet years (e.g. 2012 and 2013) leading to a high inter- and intra-annual C storage variability in relation to water condition.
- The old extensive pasture shows a higher net C storage but is more affected to intermediate water conditions, between wet and dry season, allowing the higher C storage in dry years.
- The GPP-Reco-relation is sensitive to SWC (and P-ETP), changing fraction their pattern in dry and wet years.