



**HAL**  
open science

## Can DEB models infer metabolic differences between intertidal and subtidal morphotypes of the Antarctic limpet *Nacella concinna* (Strebel, 1908)?

Charlène Guillaumot, Thomas Saucède, Simon A. Morley, Starrlight Augustine, Bruno Danis, Sebastiaan Kooijman

### ► To cite this version:

Charlène Guillaumot, Thomas Saucède, Simon A. Morley, Starrlight Augustine, Bruno Danis, et al.. Can DEB models infer metabolic differences between intertidal and subtidal morphotypes of the Antarctic limpet *Nacella concinna* (Strebel, 1908)?. *Ecological Modelling*, 2020, 430, pp.109088. 10.1016/j.ecolmodel.2020.109088 . hal-02733236

**HAL Id: hal-02733236**

**<https://hal.science/hal-02733236>**

Submitted on 22 Aug 2022

**HAL** is a multi-disciplinary open access archive for the deposit and dissemination of scientific research documents, whether they are published or not. The documents may come from teaching and research institutions in France or abroad, or from public or private research centers.

L'archive ouverte pluridisciplinaire **HAL**, est destinée au dépôt et à la diffusion de documents scientifiques de niveau recherche, publiés ou non, émanant des établissements d'enseignement et de recherche français ou étrangers, des laboratoires publics ou privés.



Distributed under a Creative Commons Attribution - NonCommercial 4.0 International License

# Can DEB models infer metabolic differences between intertidal and subtidal morphotypes of the Antarctic limpet *Nacella concinna* (Strebel, 1908)?

**Authors:** Guillaumot Charlène<sup>1,2</sup>, Saucède Thomas<sup>2</sup>, Morley Simon A.<sup>3</sup>, Augustine Starrlight<sup>4</sup>, Danis Bruno<sup>1</sup>, Kooijman Sebastiaan<sup>5</sup>

1 Laboratoire de Biologie Marine, Université Libre de Bruxelles, Avenue F.D.Roosevelt, 50. CP 160/15. 1050 BRUXELLES, BELGIUM

2 UMR 6282 Biogéosciences, Univ. Bourgogne Franche-Comté, CNRS, EPHE, 6 bd Gabriel F-21000 Dijon, France

3 British Antarctic Survey, Natural Environment Research Council, Cambridge, CB30ET UK

4 Kvaplan-Niva, Fram High North Research Centre for Climate and the Environment, 9296 Tromsø, Norway

5 Department of Theoretical Biology, VU University Amsterdam, de Boelelaan 1087, 1081 HV Amsterdam, The Netherlands

## Abstract

Studying the influence of changing environmental conditions on Antarctic marine benthic invertebrates is strongly constrained by limited access to the region, which poses difficulties to performing long-term experimental studies. Ecological modelling has been increasingly used as a potential alternative to assess the impact of such changes on species distribution or physiological performance.

Among ecological models, the Dynamic Energy Budget (DEB) approach represents each individual through four energetic compartments (i.e. reserve, structure, maturation and reproduction) from which the energy is allocated in contrasting proportions according to different life stages and to two forcing environmental factors (food resources and temperature).

In this study, the example of an abundant coastal limpet, *Nacella concinna* (Strebel 1908), was studied. The species is known to have intertidal and subtidal morphotypes, genetically similar but physiologically and morphologically contrasting.

The objectives of this paper are (1) to evaluate the potential of the DEB approach, and assess whether a DEB model can be separately built for the intertidal and subtidal morphotypes, based on a field experiment and data from literature and (2) to analyse whether models are contrasting enough to reflect the known physiological and morphological differences between the morphotypes.

We found only minor differences in temperature-corrected parameter values between both populations, meaning that the observed differences can be only explained by differences in environmental conditions (i.e. DEB considered variables, food resources and temperature, but also other variables not considered by DEB).

34 Despite the known morphological difference between the populations, the difference in shape coefficients was  
35 small.

36 This study shows that even with the amount of data so far available in the literature, DEB models can already  
37 be applied to some Southern Ocean case studies, but, more data are required to accurately model the  
38 physiological and morphological differences between individuals.

40 **Keywords:** ecological modelling; Southern Ocean; marine benthic species; model relevance; model accuracy

#### 42 **Highlights:**

- 43 - We tested the performance of DEB models applied to an Antarctic case study
- 44 - DEB models can be easily calibrated from literature and experimental data
- 45 - Our model could not differentiate morphotypes, suggesting environmental explanations
- 46 - Temperature and food resources likely underpin the physiological differences between morphotypes
- 47 - Results encourage further research in data poor regions

## 49 **1.Introduction**

50 Antarctic regions have faced strong environmental change since the twentieth century (recently reviewed in  
51 [Henley et al. 2019](#)), with a strong warming in some regions, such as in the Western Antarctic Peninsula ([King  
52 et al. 2003](#), [Vaughan et al. 2003](#), [Meredith and King 2005](#)), leading to important shifts in sea ice regimes and  
53 seasonality, including the duration and extent of sea ice cover ([Stammerjohn et al. 2012](#), [Turner et al. 2016](#),  
54 [Schofield et al. 2017](#)). The increase in the rate of glacier melting has been reported as a cause of important  
55 disturbance of the physical (currents, salinities) and biological environment (phytoplankton blooms,  
56 communities) ([Meredith and King 2005](#), [Schloss et al. 2012](#), [Bers et al. 2013](#)). Such changes have a direct  
57 impact on marine communities and particularly in coastal marine areas (both intertidal and subtidal)([Barnes  
58 and Peck 2008](#), [Smale and Barnes 2008](#), [Barnes and Souster 2011](#), [Waller et al. 2017](#), [Stenni et al. 2017](#), [Gutt  
59 et al. 2018](#)), which are places of complex land-sea interface and ecological processes. The multiple effects of  
60 ice retreat and meltwater on nearshore marine habitats have contributed to the expansion of intertidal zones  
61 and habitat alteration due to seawater freshening and stratification, shifting near-shore sedimentation, changes  
62 in water properties and current dynamics.

63  
64 However, studying Antarctic marine life is challenging. Not only do the environmental conditions make the  
65 region difficult to access and work in, but substantial financial and technical constraints make field sampling  
66 and experiments difficult to organise (e.g. cold, ice, duration of daylight; [Kaiser et al. 2013](#), [Kennicutt et al.](#)

2014, 2015, Xavier et al. 2016, Gutt et al. 2018). However, conducting physiological studies of Antarctic marine organisms has become urgent as we aim to assess their sensitivity and potential response (resilience, distribution shift or local extinction) to environmental change, a key issue for the conservation of marine life and special protected areas (Kennicutt et al. 2014, 2015, 2019 <https://www.ccamlr.org/en/organisation/home-page>).

An alternative to completing studies in these environments is the use of modelling approaches. Data needs interpretation to test hypotheses, which involves assumptions, that need to be explicit. Using a modelling approach is therefore a good strategy. Ecological modelling is used to describe species distribution and assess their climate envelopes (Elith et al. 2006, Peterson et al. 2011), study species tolerances to toxicants and to environmental change (Jager et al. 2014, Petter et al. 2014, Baas and Kooijman 2015) and model species energetic performance (Serpa et al. 2013, Thomas et al. 2016). Among these ecological models, the Dynamic Energy Budget (DEB) theory (Kooijman, 2010) has become increasingly popular. DEB parameters have been so far estimated for more than 2,000 animal species and collected in the 'Add-my-Pet' (AmP) collection ([http://www.bio.vu.nl/thb/deb/deblab/add\\_my\\_pet/](http://www.bio.vu.nl/thb/deb/deblab/add_my_pet/)). It constitutes one of the most powerful approaches to characterize individual metabolic performances (Nisbet et al. 2012, Kearney et al. 2015, Jusup et al. 2017) and can be calibrated for data-poor animals (Mariño et al. 2019). DEB models rely on thermodynamic concepts (Jusup et al. 2017) and study how energy flows are driven within individuals during their entire life cycle (Kooijman 2010). Each individual is divided into four energetic compartments, reserve E, structure V, maturation  $E_H$  and reproduction  $E_R$  from which the energy is allocated in contrasting proportions according to the different life stages and two forcing environmental factors (i.e. food resources and temperature).

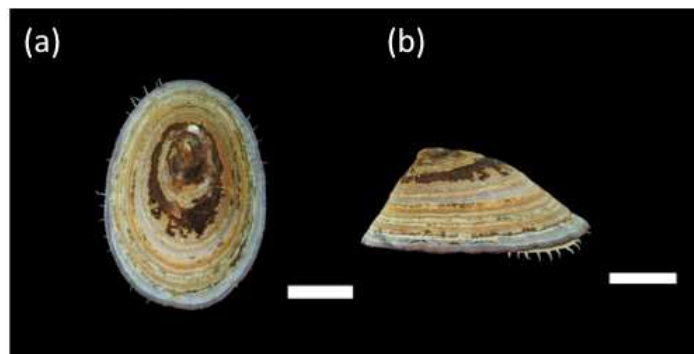
DEB models can be built with data coming from experiments and/or literature, to quantify age, length, weight of the different life stages and provide information on reproduction, growth and metabolic rates to calibrate the model (van der Meer 2006, Marques et al. 2014).

Application of DEB models to Antarctic species is increasing. They can be easily extracted from the AmP collection, using the software AmPtool. The Matlab command "select\_eco('ecozone', {'MS'})" presently gives a list of 37 species, where MS stands for "Marine, Southern Ocean". Command "select\_eco('ecozone', {'TS'})" gives another 3 species for the terrestrial Antarctic environment, among which the mite *Alaskozetes antarcticus*. Among the most common and well studied Southern Ocean benthic invertebrates are the sea star *Odontaster validus* (Agüera et al. 2015), the bivalve *Laternula elliptica* (Agüera et al. 2018), the bivalve *Adamussium colbecki* (Guillaumot 2019a) and the sea urchins *Sterechinus neumayeri* (Stainthorp and Kooijman 2017) and *Abatus cordatus* (Arnould-Pétré et al. this issue). DEB models have also been developed for some pelagic species such as the Antarctic krill *Euphausia superba*, the salp *Salpa thompsoni* (Jager and Ravagnan 2015, Henschke et al. 2018) and are under development for marine mammals such as the elephant

101 seal *Mirounga leonina* (Goedegebuure et al. 2018). Antarctic species have a range of notable physiological  
102 traits when compared to their temperate counterparts. Among others, they are physiologically adapted to  
103 constant cold temperatures (Peck et al. 2009, Morley et al. 2009, 2014), shifting day length also imposes a  
104 marked seasonal feeding behaviour (McClintock 1994, Clarke et al. 2008, Halanych and Mahon 2018), and  
105 they exhibit slow metabolic and growth rates, explaining their longer lifespans and higher longevities compared  
106 to species in other regions (Peck and Brey 1996, Peck 2002).

107  
108 The limpet *Nacella concinna* (Strebel, 1908) (Mollusca: Patellogastropoda) is a common and abundant  
109 gastropod of shallow marine benthic communities. Distributed all along the Western Antarctic Peninsula  
110 (González-Wevar et al. 2011, phylogeny recently reviewed in González-Wevar et al. 2018), it has widely been  
111 studied for decades (Shabica 1971, 1976, Walker 1972, Hargens and Shabica 1973, Houlihan and Allan 1982,  
112 Peck 1989, Clarke 1989, Cadée 1999, Ansaldo et al. 2007, Fraser et al. 2007, Markowska and Kidawa 2007,  
113 Morley et al. 2011, 2014, Suda et al. 2015, Souster et al. 2018). The limpet is found from intertidal rocky  
114 shores down to over 100 meters depth (Powell 1951, Walker 1972). It has a 2-5 cm long shell (Fig. 1), that  
115 grows only a few millimeters a year with a seasonal pattern. It is sexually mature after four to six years and has  
116 a life span of up to 10 years (Shabica 1976, Picken 1980, Brêthes et al. 1994). The limpet mainly feeds on  
117 microphytobenthos and microalgae (Shabica 1976, Brêthes et al. 1994). It spawns free-swimming planktonic  
118 larvae once a year, when water temperature rises in the austral summer (Shabica 1971, Picken 1980, Picken  
119 and Allan 1983). Larvae drift in the water column and metamorphose after more than two months (Stanwell-  
120 Smith and Clarke 1998).

121 *N. concinna* does not have a homing behaviour (Stanwell-Smith and Clarke 1998, Weihe and Abele 2008,  
122 Suda et al. 2015) and intertidal individuals can either migrate to subtidal areas in winter to escape freezing air  
123 temperatures that may drop below -20°C (Walker 1972, Branch 1981, Brêthes et al. 1994) or shelter in rock  
124 cracks and crevices in the intertidal area. In the latter case, they do not become dormant but have a limited  
125 access to microphytobenthos, as recently observed around Adelaide Island (Obermüller et al. 2011).



127 **Figure 1.** *Nacella concinna* in apical view (a) and lateral view (b). Scale bar: 1cm. Source: Q. Jossart, B121  
128 expedition.

129  
130 Two morphotypes of *N. concinna* have been distinguished, an intertidal and a subtidal type, with the intertidal  
131 type having a taller, heavier and thicker shell compared to the subtidal one that is characterized by a lighter  
132 and flatter shell (Beaumont and Wei 1991, Hoffman et al. 2010). Initially, Strebel (1908) and Powell (1951)  
133 referred to these two morphotypes as the ‘polaris’ (intertidal) and ‘concinna’ types (below 4m depth). From that  
134 point, the potential genetic differentiation between the two morphotypes has been investigated, some of the  
135 studies concluding an absence of genetic distinction (Wei 1988, Beaumont and Wei 1991, Nolan 1991) while  
136 contrarily, de Aranzamendi et al. (2008) reported significant differences based on inter-simple sequence repeat  
137 (ISSR) markers. More recently, this last method was questioned (Hoffman et al. 2010) and several studies  
138 using different markers and populations (Chwedorzewska et al. 2010, Hoffman et al. 2010, Gonzalez-Wevar et  
139 al. 2011) have concluded an absence of genetic differentiation between the two morphotypes.

140  
141 Apart from the absence of genetic differences, intertidal and subtidal populations strongly contrast in  
142 morphology and physiology, which has been explained by the prevalence of habitat heterogeneity and strong  
143 environmental gradients along rocky shore habitats, a common feature also observed in other gastropods  
144 (Johannesson 2003, Butlin et al. 2008, Hoffman et al. 2010). For instance, in *N. concinna*, the higher shell  
145 thickness observed in the shallow morphotype was hypothesised to play a role in resistance against crushing  
146 pack ice (Shabica 1971, Morley et al. 2010). Intertidal morphotypes are further resistant to air exposure thanks  
147 to higher shells, bigger inner volumes relative to their shell circumference, a combination that makes them  
148 more efficient than subtidal individuals, able to store more water and oxygen, reducing desiccation risks and  
149 delaying the metabolic switch to anaerobic fermentation (Nolan 1991, Weihe and Abele 2008). The subtidal  
150 morphotype has also proved to be less resistant to cold than the intertidal population (Waller et al. 2006), due  
151 to extra production of mucus and stress proteins in intertidal morphotypes (Clark et al. 2008, Clark and Peck  
152 2009, Obermüller et al. 2011) and due to diverse metabolic processes that contrasts between both populations  
153 (reviewed in Suda et al. 2015).

154  
155 The development of ecological models enables precise models to be built, that highlight subtle differences in  
156 parameters between ecologically similar or closely related species (Freitas et al. 2010, Holsman et al. 2016,  
157 Marn et al. 2019, Lika et al. 2020 this issue). The idea of building individual-specific models for understanding  
158 of physiological processes is not new (Bevelhimer et al. 1985, DeAngelis et al. 1994) and grew from the  
159 development of computational ecology that resulted in the possibility of generating “individual-oriented” models  
160 (IOM’s) (Hogeweg and Hesper 1990, DeAngelis et al. 1994). The IOM theory relies on the principle that “no



161 two biological organisms are exactly alike, even when they have identical genes". A group of organisms within  
162 a population can have contrasting size or physiological performances according to, for example, food  
163 conditions or competition. Modelling each individual, separately, therefore constitutes a powerful approach to  
164 enhance the understanding of the entire community (DeAngelis et al. 1994).

165  
166 In this study, due to the known morphological and physiological differences between the morphotypes, we first  
167 separately built independent DEB models for the intertidal and subtidal morphotypes of the limpet *N. concinna*,  
168 based on field experiment and literature data, to assess the potential differences between the models.  
169 Secondly, we analyse whether the two model outputs suggest contrasting physiologies between the  
170 morphotypes, using a method recently developed in DEB theory, that tries to reduce differences in parameter  
171 values that are still consistent with the data (Lika et al. 2020 this issue). Using this method, the augmented loss  
172 function, tries to merge the information of the two species models into a single one. If DEB parameters of the  
173 two species can be merged, it means that the physiological differences between these two species are not  
174 strongly different.

175  
176 These results will finally help assess DEB model accuracy giving the amount of data available to build the  
177 models in the context of Antarctic case studies and help evaluate which type of information is necessary to  
178 gather in order to fill model gaps. Finally, the study evaluates if such models are valuable for studying Southern  
179 Ocean organisms in the context of altered environments.

## 181 **2. Material and methods**

### 182 **2.1. DEB Model description**

183  
184 DEB models are based on an ensemble of rules that allocate energy flows to four main compartments (reserve  
185 E, structure V, maturity  $E_H$ , reproduction  $E_R$ ) according to a set of priorities and the level of complexity (i.e.  
186 maturity) gained by the organism (Fig. 2, Kooijman 2010). Maturity is treated as information, having mass nor  
187 energy. Food is first of all ingested and assimilated ( $\dot{p}_A$ ) and energetically stored into a reserve compartment  
188 (E). A fraction of the energy that is mobilised from reserve,  $\dot{p}_C$ , is divided into two branches according to the  
189 'kappa-rule': a part of the energy contained in the reserve compartment ( $\kappa \cdot \dot{p}_C$ ) is allocated to somatic  
190 maintenance and structure growth, whereas the second part  $(1 - \kappa) \cdot \dot{p}_C$  contributes to maturity (before the  
191 'puberty' threshold) or reproduction (after the 'puberty' threshold).

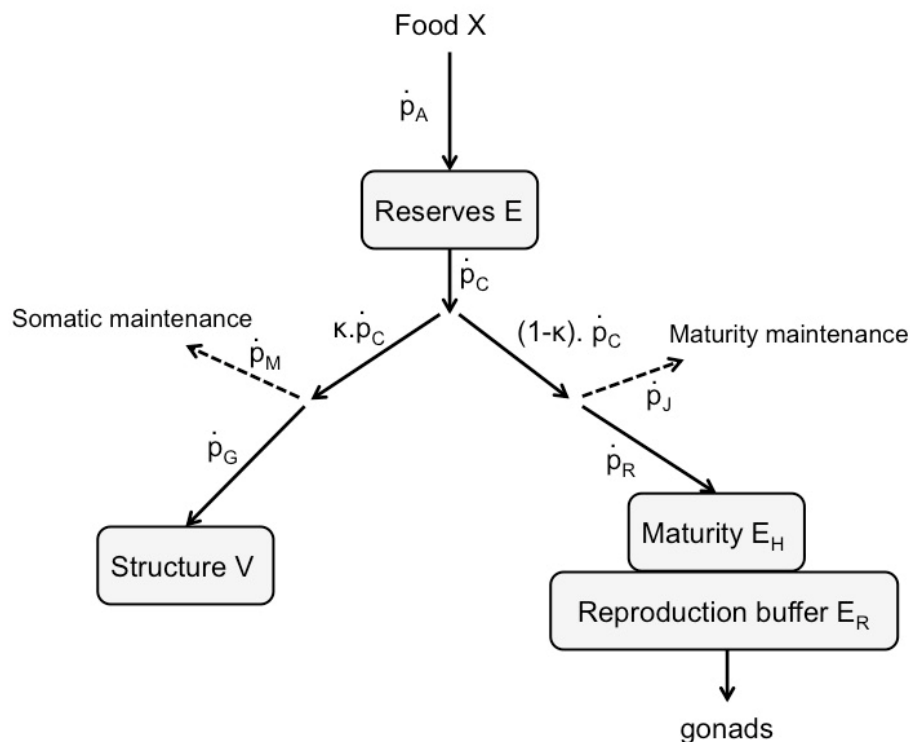
192 The energy is allocated within and in between these branches by the establishment of some priorities, where  
193 somatic maintenance ( $\dot{p}_M$ ) has priority over growth and maturity maintenance ( $\dot{p}_J$ ) has priority over maturity and

194 reproduction. During its lifetime, the organism allocates energy to maturity which symbolizes its complexity and  
 195 reaches some life stages at some defined thresholds ( $E_H^b$ , birth, when the organism is capable to feed;  $E_H^j$ ,  
 196 metamorphosis;  $E_H^p$ , puberty, when it can reproduce). After reaching sexual maturity, the energy that was  
 197 formerly allocated to maturity is attributed to the reproduction buffer and the available energy is allocated to the  
 198 development of gametes.

199 Different types of DEB models have been developed and coded for parameter estimation, see frequently  
 200 updated [https://github.com/add-my-pet/DEBtool\\_M](https://github.com/add-my-pet/DEBtool_M) page (Marques et al. 2018, 2019). Here, the *abj* model was  
 201 used for *N. concinna*. This model considers that growth acceleration occurs between birth and metamorphosis  
 202 (Kooijman 2010, Mariño et al. 2019).

203 The DEB model is forced by food availability and temperature. Temperature acts on metabolic rates following  
 204 the Arrhenius principle (see Kooijman 2010, Jusup et al. 2017 for details). A temperature correction factor is  
 205 applied to each rate that takes into account the lower and higher optimal boundaries of the individual tolerance  
 206 range.

207 Food available for ingestion is represented by the functional response  $f$  comprised between [0,1], where 0 is  
 208 starvation condition and 1 very abundant food.



209 **Figure 2:** Schematic representation of the standard DEB model, with energy fluxes (arrows, in  $J \cdot d^{-1}$ ) that connect the four  
 210 compartments (boxes). Energy enters the organism as food (X), is assimilated at a rate of  $\dot{p}_A$  into the reserve  
 211 compartment (E). The mobilization rate ( $\dot{p}_C$ ), regulates the energy leaving the reserve to cover somatic maintenance ( $\dot{p}_M$ ),  
 212



213 structural growth ( $\dot{p}_G$ ), maturity maintenance ( $\dot{p}_J$ ), maturity ( $\dot{p}_R$ ) (sexually immature individuals) and reproduction ( $\dot{p}_R$ )  
 214 (mature individuals).  $\kappa \cdot \dot{p}_C$  is the proportion of the mobilized energy diverted to  $\dot{p}_M$  and  $\dot{p}_G$ , while the remaining part (1-  
 215  $\kappa) \cdot \dot{p}_C$  is used for  $\dot{p}_J$  and  $\dot{p}_R$ .

216

217 The parameters of the DEB model can be estimated from multiple data on the eco-physiology of a species.  
 218 The ones studied in this work are presented in Table 1.

219

220

221

222

223

224

225

**Table 1.** List of the main DEB parameters, definition and units

Parameter	Description	Unit
Primary DEB parameters		
$\{\dot{p}_{Am}\}$	surface-area-specific maximum assimilation rate	$\text{J.cm}^{-2}\text{d}^{-1}$
$\dot{v}$	energy conductance (velocity)	$\text{cm.d}^{-1}$
$\kappa$	fraction of mobilised reserve allocated to soma	-
$[\dot{p}_M]$	specific volume-linked somatic maintenance rate: $\dot{p}_M / V$	$\text{J.cm}^{-3}\text{d}^{-1}$
$[E_G]$	volume-specific costs of structure; better replaced by $[E_V]=\kappa_G$ , where $\kappa_G$ is the fraction of growth energy fixed in structure: $[E_V]=[E_G]$	$\text{J.cm}^{-3}$
$E_H^b$	maturity at birth	J
$E_H^j$	maturity at metamorphosis	J
$E_H^p$	maturity at puberty	J
$\ddot{h}_a$	Weibull ageing acceleration for animals	$\text{d}^{-2}$
$s_G$	Gompertz stress coefficient	-
$\delta_M$	shape (morph) coefficient: $L=Lw$	-
$\delta_{M\_larvae}$	shape (morph) coefficient of the larvae	-
Other parameters		
$z$	zoom factor to compare body sizes inter-specifically; $z = 1$ for $L_m = 1 \text{ cm}$	-
$s_M$	Acceleration factor at $f = 1$ , it is equal to the ratio of structural length at	-

	metamorphosis and birth.	
[E <sub>m</sub> ]	[E <sub>m</sub> ]= $\{\dot{p}_{Am}\}/\dot{v}$ ; ratio of specific assimilation over energy conductance	J.cm <sup>-3</sup>

## 2.2. Data collection and DEB calibration

DEB models were calibrated using zero-variate data (single data points at defined life stages, such as length or weight at sexual maturity, number of eggs produced per female) and uni-variate data (relationships between two variables such as oxygen consumption and temperature, length~weight relationship, weight or size~time relationships)(van der Meer 2006, Guillaumot 2019b). Data that were collected from the literature (Table 2), paying attention to the different taxonomic names adopted for the species through time (see <http://www.marinespecies.org/aphia.php?p=taxdetails&id=197296>, accessed December 2018); to the sampling area to enable the two morphotypes to be distinguished (intertidal/subtidal) and to the environmental conditions under which each dataset was recorded (available food resources and temperature).

Data from the literature were supplemented by experiments led by S. Morley at Rothera Station (Adelaide Island, Western Antarctic Peninsula) in January-February 2018 (details in Appendix A). Individual shells were brought back to Europe and processed with imagery to collect growth ring data (Appendix B).

Some data are shared between the intertidal and subtidal morphotypes due to a lack of information on the morphotypes physiology in the literature (Table 2). The characteristics of the first developmental life stage, when the larvae become able to feed (i.e. age, length and weight at birth) and the pace of development (i.e. age at puberty, maximal observed age) are assumed to be identical.

Each data set was characterised by the corresponding temperature and food resources present in the field. Food resources were represented in the model by a scaled functional response  $f$  constrained between 0 and 1, with 0 meaning no food availability and 1 maximal food abundance.  $f$  parameters were differentiated between the different stations along with temperatures. Food is very abundant in the field for the limpet and  $f$  parameters were therefore kept fixed with values  $\geq 0.9$ . Food availability from the Rothera Station was described by pictures taken in the field and was estimated at  $f=1$ . Signy and Anvers Islands  $f$  was set at 0.9 because physiological traits (growth rate, maximal size) are very close (but slightly lower) than Rothera's observations, but no precise information is available for food conditions in the different publications for these stations.

**Table 2.** Zero and uni-variate data used to build the intertidal and subtidal models.

INTERTIDAL GROUP	SUBTIDAL GROUP
------------------	----------------

<b>Zero-variate data, (unit)</b>	<b>Value</b>	<b>Reference</b>	<b>Value</b>	<b>Reference</b>
Age at birth ab (days)	10	<a href="#">Peck et al. 2016</a>	Same as intertidal	
Age at puberty ap (years)	4	<a href="#">Shabica 1976</a>	Same as intertidal	
Maximal observed age am (years)	14	<a href="#">Shabica 1976</a>	Same as intertidal	
Length at birth Lb (cm)	0.0228	<a href="#">Peck et al. 2016</a>	Same as intertidal	
Length at puberty Lp (cm)	1.54	S. Morley experiment 2018	1.59	<a href="#">Picken 1980</a>
Maximal observed shell length Li (cm)	5.8*	<a href="#">Shabica 1976</a>	5.52**	S. Morley experiment 2018
Wet weight of the egg Ww0 (g)	5.8.10 <sup>-6</sup> ***	<a href="#">Peck et al. 2016</a>	Same as intertidal	
AFDW at puberty Wdp (g)	0.0236	<a href="#">Shabica 1976</a>	0.057	S. Morley experiment 2018
<b>Uni-variate data, (unit)</b>	<b>Reference</b>		<b>Reference</b>	
Length ~ AFDW LWd_signy (cm, g)	<a href="#">Nolan 1991</a> , Signy Island		<a href="#">Nolan 1991</a> , Signy Island	
Length ~ AFDW LWd (cm, g)	S. Morley experiment 2018		S. Morley experiment 2018	
Length ~ Gonado somatic index LGSI(cm, -)	S. Morley experiment 2018		S. Morley experiment 2018	
Length ~ Oxygen consumption	S. Morley experiment 2018		S. Morley experiment 2018	

LJO (cm, μmol/h)		
Temperature ~ Oxygen consumption TJO (K, μL/h)	Peck 1989	Peck 1989
Time ~ Length tL (d, cm)	S. Morley experiment 2018****	S. Morley experiment 2018****

255

256 \* Max sized collected individual on the field during Belgica121 expedition (Danis et al. 2019)

257 \*\* [Shabica 1976](#) indicates an observed value of 5.8cm and S. Morley measurements indicate a ratio between  
258 intertidal/subtidal lengths of the morphotypes of 1.05. The unknown subtidal Li value was calculated as  
259 5.8/1.05= 5.52cm.

260 \*\*\* based on egg diameter of 221 μm

261 \*\*\*\* imagery and growth ring measurements, see Appendix B

262

### 263 **2.3. DEB parameter estimation and goodness of fit**

264

265 Sets of zero and uni-variate data, supplemented by pseudo-data were used to estimate the DEB primary  
266 parameters. Pseudo-data are extra data coming from different taxa that help calibrate the model estimation  
267 similarly to a prior element ([Lika et al. 2011a](#)). This procedure has similarities with Bayesian estimation, but are  
268 not embedded in a maximum likelihood context, since the stochastic component is not modelled. Before  
269 parameter estimation, each data set can be subjectively linked by a weight coefficient to quantify the realism of  
270 reducing variation in parameter values. Selected weight coefficients are always selected small enough in order  
271 to hardly affect parameter estimation if the information contained in the real data set is sufficient.

272 The DEB parameters estimation is done by simultaneously estimating each parameter using these empirical  
273 and pseudo-data by minimizing a loss function (eq. 1), using the Nelder-Mead simplex method, updated and  
274 explained in [Marques et al. \(2018, 2019\)](#). The loss function that is minimized is

275 
$$\sum_{i=1}^n \sum_{j=1}^{n_i} \frac{w_{ij}}{n_j} \frac{(d_{ij}-p_{ij})^2}{\bar{d}_i^2 + \bar{p}_i^2} \quad \text{eq.1}$$

276 where i scans datasets and j points in this dataset.  $d_{ij}$  and  $p_{ij}$  are respectively the data and the predictions and  
277  $\bar{d}_i$  and  $\bar{p}_i$  their average values in set i.  $w_{ij}$  are the attributed coefficients,  $n$  is the number of data sets,  $n_i$  denotes  
278 the data in a dataset,  $n_j$  the data in data-points.

279

The value of the loss function is evaluated for each parameter trial. The goodness of fit of each prediction was quantified by the relative error (RE). The mean relative error (MRE) quantifies the overall model performance. RE corresponds to the sum of the absolute differences between observed and predicted values, divided by the predicted values. Contrarily to the loss function, the MRE does not take into consideration the weights of the different data (Marques et al. 2018). MRE values can have values from 0 to infinity, with 0 value meaning that predictions match data exactly.

## 2.4. Merging parameters

The augmented loss function approach developed by (Lika et al. 2020 this issue) is a new extension that enables to compare small variation in parameter values between (close) species. The second term (in bold) of the following equation (eq. 2) is the new extension of the 'symmetric bounded (sb)' loss function:

$$F_{sb} = \sum_{i=1}^n \sum_{j=1}^{n_i} \frac{w_{ij}}{n_j} \frac{(d_{ij}-p_{ij})^2}{\bar{d}_i^2 + \bar{p}_i^2} + \sum_{k=1}^N \frac{w_k \mathbf{var}(\theta_k)}{\mathbf{mean}(\theta_k)^2} \quad \text{eq.2}$$

where  $w$ 's are weights,  $d$ 's data,  $p$ 's predictions,  $\theta$ 's parameters,  $j$  scans data-points with a data-set of  $n_i$  points ( $n_i = 1$  is allowed),  $i$  scans the data-sets and  $k$  the parameters.

In this second term, when  $w_k=0$ , the parameter  $\theta_k$  between species are different, but when increasing  $w_k$ , the parameter  $\theta_k$  tends to be similar between species. Therefore, the augmented loss function method uses this mathematical principle to spot potential differences between parameters of different species. First, the set of DEB parameters are separately estimated for each species and weight coefficients are set to zero. Then, for each parameter, the weight coefficient will be step-wise increased, making the loss function shift as a result. If a maximal weight value is reached without sharp changes in the loss function value along the weight increase, it means that the parameter value has a minimum variance between species. Contrarily, if the loss function value presents a sharp increase due to the change in weight coefficient, it means that the studied parameter should present contrasting values between the related species.

By applying this method to the case study of an intertidal and subtidal morphotype of the limpet *N. concinna*, we aim to evaluate whether there are any differences between both morphotypes caused by differences in parameters, or whether these differences are explained only by differences in environmental conditions (i.e. food resources and temperature). Initially, the sets of parameters have been estimated separately for both morphotypes and all weight coefficients are set to zero. By step-wise increasing the weight coefficient for a particular shared parameter, the overall loss function may increase and a common merged DEB parameter is reached. If a common value of the DEB parameter can be found without important increase in MRE or loss

function values, it means that the intertidal and subtidal morphotypes do not significantly differ for this parameter. A similar procedure is applied for each DEB parameter separately and iteratively. In order to have a quick idea of replicability in the results, the procedure was replicated five times, contrasting in different orders of DEB parameters merging (Appendix C). The order of permutation of merged parameters of these five replicates was chosen randomly among the 11! possible solutions. Changes in MRE and loss function values at each weight modification were reported and the predictions of the intertidal, subtidal and merged models were compared.

## 3.RESULTS

### 3.1. Parameters of the DEB models

DEB predictions for the separate intertidal and subtidal models are accurate, with MRE values lower than 0.2 (Table 3). Average MRE value of the AmP collection is close to 0.06. Relative Errors are quite low, with the highest values obtained for length~GSI data (RE= 0.6089 and 0.8702 for intertidal and subtidal models respectively) and time~length relationships, obtained from the sclerochronology measurements, that are highly variable between each measured shell (respectively RE= 0.3645 and 0.5924 for intertidal and subtidal models) (Fig. 3, Table 3, Appendix B).

In view of the substantial morphological difference between the populations, we expected to see a clear difference in the shape coefficient  $\delta_M$ . We found a slightly larger value of  $\delta_M$  for the intertidal morphotype, meaning that for the same shell length, it has slightly more structure, compared to the subtidal one.

Subtidal morphs have a lower energy conductance  $\dot{v}$  as well as double the value of maximum surface area specific assimilation rate  $\{\dot{p}_{Am}\}$  with respect to the intertidal morphs. The ratio of specific assimilation over energy conductance  $[E_m]=\{\dot{p}_{Am}\}/\dot{v}$ , determines the maximum reserve capacity of a species.

The fraction of mobilised reserve allocated to soma  $\kappa$  is also bigger (0.9368 for subtidal vs. 0.9084 for intertidal type), and the intertidal individuals also present a lower value for somatic maintenance rate  $[\dot{p}_M]$  compared to the subtidal ones. This highlights contrasts between the morphotypes in energy allocated to maturation along the first life stages ( $E_H^b, E_H^j$ ) and more available energy for growth for the intertidal morphotype that has lower values of somatic maintenance. Intertidal morphotypes seem to accelerate metabolism a two-fold difference in acceleration factor  $s_M$  between intertidal and subtidal types (respectively 7.862 and 4.049). The maturity threshold to reach puberty,  $E_H^p$  is also lower for the intertidal morphotype than the subtidal.

346 The MRE values of the merged models stay below 0.25 and the value of the loss function for the merged  
 347 situation is only a little larger than the sum of both populations, reflecting the fact a substantial reduction in the  
 348 total number of parameters by almost a factor 2, hardly affects the goodness of fit (Table 3, Appendix C).  
 349 DEB parameters of the merged models are quite close to the values of the intertidal and subtidal models, with  
 350  $[\dot{p}_M]$ ,  $\delta_M$ ,  $E_H^p$ ,  $E_H^b$ ,  $[E_G]$  and  $\dot{v}$  merged values being almost exactly in between the values of the intertidal and the  
 351 subtidal morphotypes.  $\kappa$ ,  $z$ ,  $E_H^j$ ,  $\{p_{Am}\}$  and  $\ddot{h}_a$  are closer to the intertidal predictions.  
 352 Univariate predictions are also extremely close between the two models and the merged model (Fig. 3), with  
 353 only a small difference for the subtidal model for which the GSI~length predictions are higher than the intertidal  
 354 and merged predictions, mainly due to errors in predictions and scatter in the data. This higher potential of  
 355 energy allocation to reproduction can, however, be linked to the higher  $E_H^p$  values estimated for the subtidal  
 356 type (Table 3).

357  
 358 **Table 3.** Summary of goodness of fit, DEB model estimates at a reference temperature of  $T_{ref}= 20^\circ\text{C}$ . RE:  
 359 Observed and predicted values for zero-variate data, relative error (RE) for the uni-variate data. See Fig. 3 for  
 360 comparisons for uni-variate predictions between the models. MRE= Mean Relative Error. For the merged  
 361 model, the MRE values respectively correspond to the mean relative error of model prediction for data of both  
 362 intertidal and subtidal populations. All DEB parameters indicated were allowed to vary during covariance  
 363 estimation. The abj parameters that are not mentioned in that table were kept constant with the standard initial  
 364 values.

	INTERTIDAL	SUBTIDAL	MERGED
<b>MRE</b>	0.166	0.192	0.196 0.227
<b>Loss function</b>	0.2441	0.2345	0.7936
<b>z (-)</b>	0.3055	0.4317	0.2579
<b><math>\{p_{Am}\}</math> (J/d. cm<sup>-2</sup>)</b>	8.361	19.07	8.859
<b><math>\dot{v}</math> (cm/d)</b>	0.0501	0.0426	0.0499
<b>K (-)</b>	0.9084	0.9368	0.9256
<b><math>[\dot{p}_M]</math> (J/d. cm<sup>-3</sup>)</b>	19.62	31.68	24.62



$[E_G]$ (J. cm <sup>-3</sup> )	3956			3949			3952		
$E_H^b$ (J)	0.00174			0.00115			0.0014		
$E_H^j$ (J)	0.8749			0.0779			0.9206		
$E_H^p$ (J)	75.23			121.4			94.66		
$\ddot{h}_a$ (1/d <sup>2</sup> )	5.003.10 <sup>-8</sup>			8.335.10 <sup>-8</sup>			4.24.10 <sup>-8</sup>		
$s_G$ (-)	10 <sup>-4</sup>			10 <sup>-4</sup>			10 <sup>-4</sup>		
$\delta_M$ (-)	0.4517			0.3866			0.4247		
$\delta_{M\_larvae}$ (-)	0.7167			0.7125			0.7215		
$s_M$ (-)	7.862			4.0491			8.5372		
Zero-variate									
	<b>Data // prediction// RE</b>			<b>Data // prediction// RE</b>			<b>prediction// RE</b>		
<b>ab (d)</b>	10	10.62	0.0619	10	10.59	0.0586	10.61	0.0609	
<b>ap (y)</b>	4	3.54	0.1141	4	3.75	0.0607	3.66	0.0845	
<b>am (y)</b>	14	14	9.4.10 <sup>-5</sup>	14	13.99	4.8.10 <sup>-4</sup>	14	1.6.10 <sup>-4</sup>	
<b>Lb (cm)</b>	0.0228	0.02279	2.4.10 <sup>-4</sup>	0.0228	0.0228	6.05.10 <sup>-4</sup>	0.0228	1.424.10 <sup>-6</sup>	
<b>Lp (cm)</b>	1.54	1.225	0.2045	1.59	1.81	0.1384	1.49	0.0323	
<b>Li (cm)</b>	6.5	5.319	0.1816	5.52	4.515	0.1827	5.184	0.2024	
<b>Ww0 (g)</b>	5.8.10 <sup>-6</sup>	5.8.10 <sup>-6</sup>	0.0181	5.8.10 <sup>-6</sup>	5.7.10 <sup>-6</sup>	0.0157	5.72.10 <sup>-6</sup>	0.0138	
<b>Wdp (g)</b>	0.0236	0.0263	0.1181	0.057	0.05649	0.0089	0.0396	0.6762	
Uni-variate									
	<b>RE</b>			<b>RE</b>			<b>RE</b>		

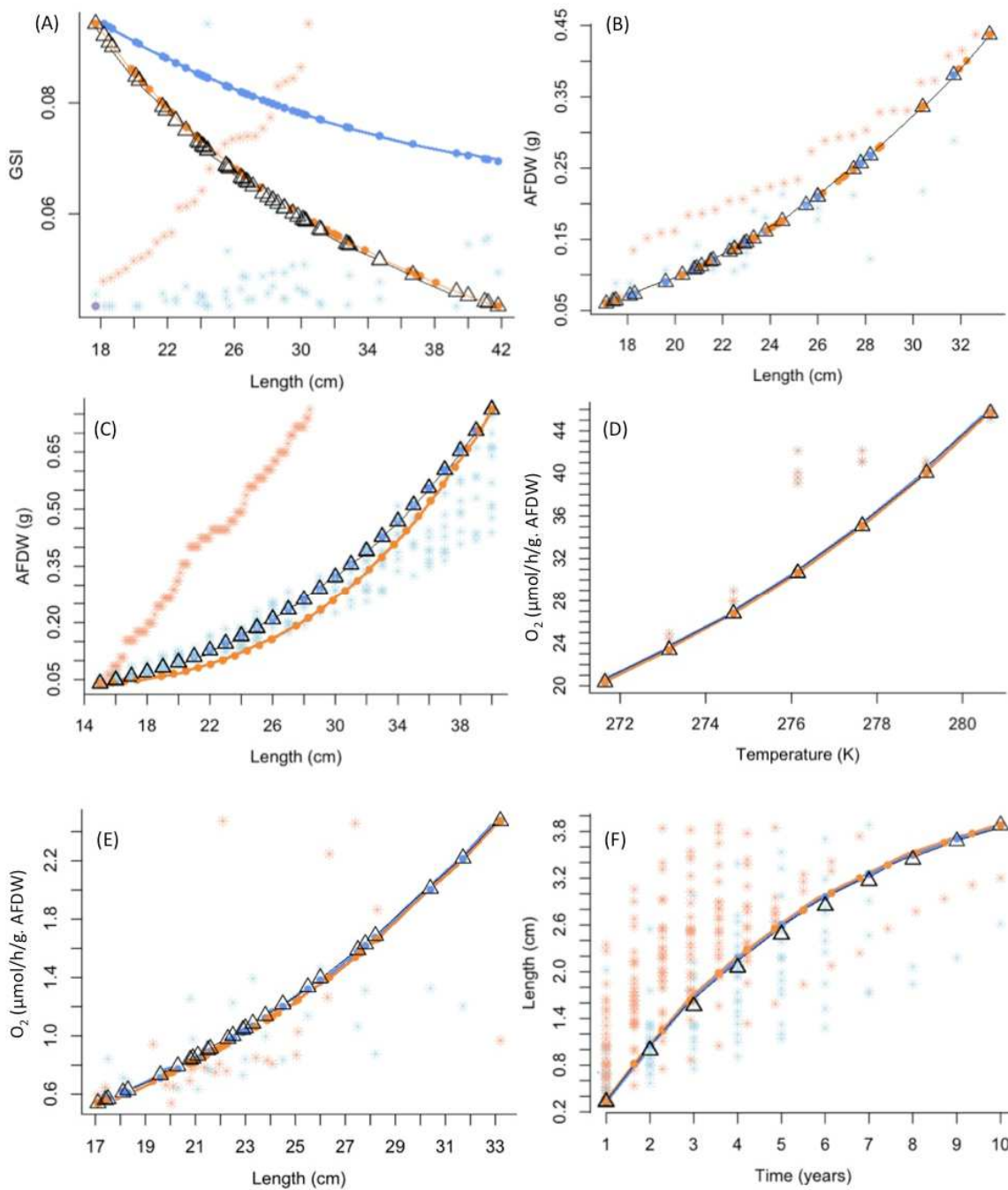
<b>LWd_signy (cm, g)</b>	0.1443	0.1698	0.1274
<b>LWd (cm, g)</b>	0.1469	0.1834	0.216
<b>LGSi (cm, -)</b>	0.6089	0.8702	0.5835
<b>LJO (cm, <math>\mu\text{mol/h}</math>)</b>	0.2567	0.2831	0.2487
<b>TJO (K, <math>\mu\text{L/h}</math>)</b>	0.1034	0.1216	0.0876
<b>tL (d, cm)</b>	0.3645	0.5924	0.4097

365

366

367

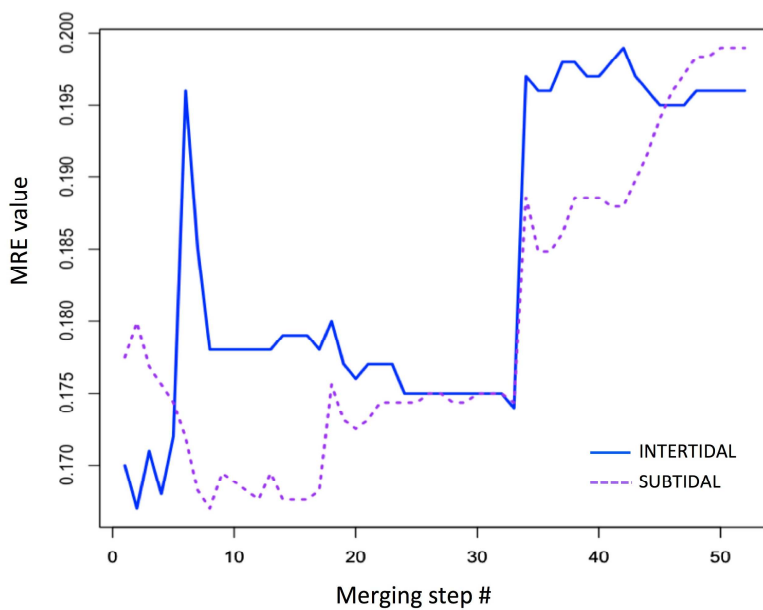
368



**Figure 3.** Comparison of model predictions (uni-variate data). Blue dots joined by lines: subtidal model predictions, blue stars: subtidal data (observations); orange dots joined by lines: intertidal model predictions, orange stars: intertidal data (observations); black triangle joined by lines: merged model predictions. Prediction points may overlap (D).

### 3.2. Merging process

376 Along the merging procedure, the loss function and MRE values of the model at each step of the merging  
 377 procedure are observed, one 'step' corresponding to the iterative increase of the weight coefficient of the  
 378 studied parameter (i.e. merging step, Fig. 4) . Changes in loss function and MRE values are not that important  
 379 between the initial step and the final step of the merging procedure (Fig. 4, Appendix D) (respectively from  
 380 0.170 to 0.196 and from 0.192 to 0.227 for the MRE intertidal and MRE subtidal values), meaning that merging  
 381 parameters is possible.  $E_H^p$  and  $\delta_M$  seem to be the parameters that are the most influencing the model during  
 382 the merging procedure for both the intertidal and subtidal models and  $[\dot{p}_M]$  seems to further influence the  
 383 intertidal model.



Merged parameter	Merging step #	Merged parameter	Merging step #
$z$	2-4	$E_H^b$	26
$[\dot{p}_M]$	5-12	$[E_G]$	27-29
$\delta_{M\_larvae}$	13-15	$E_H^j$	30-32
$\kappa$	16-20	$E_H^p$	33-41
$\ddot{h}_a$	21-22	$\delta_M$	42-52
$\dot{v}$	23-25		

384  
 385 **Figure 4.** Evolution of Mean Relative Error (MRE) values along the merging of the different parameters. MRE  
 386 intertidal in solid blue line, MRE subtidal in dashed purple line. Example of Trial #5 (merging of  $z$ ,  $[\dot{p}_M]$ ,  $\delta_{M\_larvae}$ ,  
 387  $\kappa$ ,  $\ddot{h}_a$ ,  $\dot{v}$ ,  $E_H^b$ ,  $[E_G]$ ,  $E_H^j$ ,  $E_H^p$ ,  $\delta_M$ ).

## 389 4. DISCUSSION

### 390 4.1. DEB models relevance

391 DEB models are powerful tools enabling predictions of the individuals energetic scope for survival, growth and  
 392 reproduction, given the considered environmental conditions (Kooijman 2010, Jusup et al. 2017). These  
 393 mechanistic approaches have been of interest for several years to the marine Antarctic community (Gutt et al.  
 394 2012, Constable et al. 2014, Gutt et al. 2018), and have been increasingly developed during recent years (e.g.  
 395 Agüera et al. 2015, 2018, Goedegebuure et al. 2018, Henschke et al. 2018).

396 This study is based on the example of the limpet *Nacella concinna* and uses data from literature supplemented  
397 by experiments conducted in Antarctica in February 2018, to build the DEB models of the intertidal and subtidal  
398 morphotypes of the species. The separately produced models were accurate, with a reduced error between  
399 observations and model predictions, except for some scatter among data such as Length~GSI relationship.  
400 Such accuracy was mainly possible thanks to the important amount of uni-variate data that were provided by  
401 the complementary experiments conducted in Rothera, which filled knowledge gaps about reproduction,  
402 collected more precise length weight relationships to observe the morphological contrasts between intertidal  
403 and subtidal individuals and collected more precise information on the limpet's metabolic performance through  
404 its development.

405  
406 Rates (and ages) depend on temperature. Here we correct for differences in temperature using an Arrhenius  
407 relationship. However, in order to meaningfully compare differences in parameters between species living in  
408 different habitats, it is useful to standardize all parameters to a common reference temperature:  $T_{ref}= 20^{\circ}\text{C}$ .  
409 This is the standard for presenting and comparing DEB parameters across the 2,000 different species in AmP.  
410 When comparing DEB parameters estimations of *N. concinna* to those of their temperate counterpart *Patella*  
411 *vulgata* (Kooijman et al. 2017) at  $T_{ref}= 20^{\circ}\text{C}$ , we notice clear differences between the species in term of  
412 metabolic strategies, although the limpets morphology and therefore size and volume are close between these  
413 species (close length and predicted shape coefficient  $\delta_M$ ). For *N. concinna*, predicted  $\kappa$  is much higher and  
414 close to 1 (0.9256 vs 0.617 for *P. vulgata*), meaning that almost all the energy available in the reserve  
415 compartment is allocated to somatic maintenance and growth, and only a small amount is available for  
416 reproduction. This is clearly visible with the ultimate rate of reproduction more than 40 times lower for the  
417 Antarctic limpet compared to the temperate one. The capacity to assimilate resources  $\{p_{Am}\}$  was estimated to  
418 be 10 times higher for *P. vulgata*, explaining the 2.5-fold lower growth rate for *N. concinna*. The two  
419 metabolisms also contrast by the fact that *P. vulgata* is predicted to store more reserves than *N. concinna* in  
420 similarly abundant food conditions. These results are consistent with published experiments, where it was  
421 shown that rasping rates (i.e. feeding potential) were higher for temperate and tropical species than for *N.*  
422 *concinna* (Morley et al. 2014) and that development rates of Antarctic marine molluscs are much slower than at  
423 higher temperatures (Peck et al. 2007, 2016), which could be partially due to the increased costs of protein  
424 production in the cold (Marsh et al. 2001, Robertson et al. 2001, Pörtner et al. 2007).

425 Such examples of comparison of energetic performance between these two species highlight the performance  
426 of DEB models to be efficiently applied for Antarctic case studies and powerful and accurate enough to  
427 enhance physiological contrasts even between closely related species; as previously discussed in other works  
428 (van der Veer et al. 2006, Gatti et al. 2017, Marques et al. 2018, Marn et al. 2019).

## 429 **4.2. Comparison between morphotypes**

430

431 In a second step, we evaluated if known contrasts in physiological traits between the morphotypes could be  
432 highlighted by the modelling approach. By simply comparing the two single models, we observed minimal  
433 energetic contrasts between the intertidal and subtidal morphotypes (small differences in assimilation rate and  
434 ability to store reserves, Table 3, Fig. 3). By using the augmented-loss-function method, we tried to merge the  
435 models into a single one, parameter by parameter, to evaluate the contrasts in parameters between the types  
436 (Lika et al. 2020, this issue). Results show that models were merged without generating significant changes in  
437 MRE and loss function values (Fig. 4, Appendix D). Predictions of the uni-variate data are really similar  
438 between the three models (Fig. 3), with only minor differences in temperature-corrected parameter values  
439 between both populations, meaning that the observed differences are best explained by differences in  
440 environmental conditions (temperature and food availability).

441 Despite the known physiological contrasts in the field, the available data did not allow the models to capture  
442 these physiological differences between the morphotypes, using only the available data. Scatter distribution of  
443 the data used to calibrate the model (Fig. 3) can hide metabolic differences, which calls for more experiments  
444 to describe the physiology of the different morphotypes. Using more complete datasets, for which all  
445 parameters are independent between intertidal and subtidal morphotypes, may also help to further constrain  
446 the differences. In our case study, several zero-variate data are shared between the intertidal and subtidal  
447 models, among which age, length and weight at birth, that control the very beginning of the development. The  
448 observed results of a twofold difference in metabolism acceleration of intertidal morphotypes compared to  
449 subtidal ones ( $s_M \approx 8$  and 4 for intertidal and subtidal) is in fact an artefact caused by common parameters  
450 related to birth and puberty stages (age, length, weight). Indeed, specific assimilation at birth for the subtidal is  
451 two times larger than that for the intertidal, which indicates that subtidal individuals develop faster. However,  
452 according to available data provided in the model, puberty is reached at the same time for both types.  $E_H^p$   
453 consequently needs to be smaller for the intertidal type to reach puberty at the same age  $a_p$  and length  $L_p$ ,  
454 explaining the observed contrasts between the intertidal and subtidal groups.

455 Improving the completeness of these models would therefore be necessary to enable further detailed  
456 conclusions.

457 A common approach in biology is to focus on differences between individuals, populations and species. Here  
458 we adopt a contrasting strategy in which we force models to determine in what manner the populations are  
459 similar in order to quantify in what manner they differ. This work is a first step to compare the energetics of  
460 both populations, and we discovered how (given the data) they seem more metabolically similar than what their  
461 appearance would suggest as first. We also highlight some artefacts that come from the quality of the data and  
462 the scatter therein. New data (so new knowledge) that fill current knowledge gaps will yield further insight into  
463 how the metabolisms of these populations have diverged to adapt to differences in environment. The current

464 work is a contribution to understanding the relationship between observations (data) and metabolism for these  
465 two populations.

### 467 **4.3. Models drawbacks and improvements**

468  
469 Apart from data availability, a drawback of our model construction is the lack of information about  
470 environmental properties that makes comparisons between estimations of the two morphotypes quite difficult  
471 to perform. In the models, we just considered an average temperature for intertidal or subtidal habitats from  
472 where the limpets come from, but do not add any supplementary detail on environmental contrasts between  
473 these habitats not in the difference of food availability between the morphotypes. However, contrasting  
474 environmental pressures (desiccation, salinity, hydrodynamism) and habitat characteristics (immersion time,  
475 substratum type, and surrounding physico-chemical factors) contribute to contrasting adaptative strategies  
476 among which morphological adaptation is really important for limpets, but have not been integrated into our  
477 DEB models (because it requires more data we don't have) (Vermeij 1973, Branch 1981, Denny & Blanchette  
478 2000, Sa Pinto et al. 2008, Bouzaza & Mezali 2013, Grandfils 1982, Gray & Hodgson 2003, Espinosa et al.  
479 2009). Desiccation is one of the strongest hypothesis to explain the morphological differences between the  
480 intertidal and subtidal morphotypes (Mauro et al. 2003, Bouzaza & Mezali 2018). The presence of high  
481 upstream shifted apex form for the intertidal morphotypes, more exposed to desiccation, could help to store  
482 more water and absorb more oxygen, as described for *Patella ferruginea* (Branch 1985, Paracuellos et al.  
483 2003). Similarly, shell volumes are bigger for the intertidal type and help reduce water loss (Vermeij 1973,  
484 Wolcott 1973, Branch 1975, Branch 1981) but also infer resistance to the effects of ice damage (Morley et al.  
485 2010). Differences in the energetic responses of the two morphotypes of *N. concinna* to the difference in mean  
486 intertidal (0.45°C) and subtidal (-0.1°C), or the much greater difference in maximum (12.3 versus 1.7°C  
487 respectively; Morley et al., 2012), could be a proximate cause of the morphological differences. Taking into  
488 consideration differences between the environments is therefore important but strongly lacking in the analysis  
489 presented here.

490  
491 In our study, field data show a slight difference in shell length of +5% and a small difference also in the  
492 predicted shape coefficient of 0.45 against 0.39 (Table 3) for respectively the intertidal and subtidal individuals.  
493 This indicates very small differences in inner volumes between the studied populations as calculated by the  
494 DEB, meaning that the DEB model does not adequately reflect the difference in morphology between the  
495 intertidal and subtidal morphotypes. In the raw data, shell heights present a 33% difference between intertidal  
496 and subtidal individuals (Appendix A) but shell length was used, rather than shell height, in the model to  
497 characterize the growth structure of the species. Fine tuning the models with extra shape information could



498 have helped to bring further contrasts between the two models, but also requires much more information on  
499 shell growth.

500  
501 Moreover, the difference in food availability and quality was hypothesized between the orphotypes when  
502 calibrating the model, despite food abundance and quality knowledge being responsible for strong contrasts in  
503 DEB model outputs (Kooijman 2010, Thomas et al. 2011, Saraiva et al. 2012, Sarà et al. 2013). During winter  
504 time, the intertidal type seems to have supplementary access to ice-algae and microphytobenthos in rock  
505 crevices, whereas the subtidal type mainly grazes on the diatoms films growing on encrusting red algae  
506 (Appendix A, Obermüller et al. 2011). But food abundance and quality were assumed for the construction of  
507 the models, as no data accurate enough were available to characterize the feeding behaviour of the limpets.  
508 Moreover, in the case of intertidal type, no clear hypothesis is available for their behaviour during winter period,  
509 as several authors hypothesize either a migration into the subtidal or a dormance period hidden into crevices  
510 during the period where ice is covering their habitat (Brêthes et al. 1994, Obermüller et al. 2011). However, this  
511 information would be essential to explain how these individuals energetically behave during this period.

#### 512 513 **4.4. Potential of the approach**

514  
515 This study showed that it is feasible to build a DEB model for a marine Antarctic species, with the few available  
516 data. Adding extra information from sampling and experiments during a single expedition in the field  
517 considerably increased the accuracy of the model and highlighted some small differences in energy allocation  
518 priorities, maintenance costs and reproductive potential between the intertidal and subtidal morphotypes. But  
519 the method is then limited by model calibration and data availability since it could not prove that these  
520 contrasts are explained by anything else but environmental conditions.

521  
522 Such DEB models would already be sufficient to (1) describe the performance of the species physiological  
523 traits in spatially or temporally contrasting environmental conditions (Kearney et al. 2012, Teal et al. 2012), (2)  
524 to be upscaled to the population level to assess population structure and density dynamics (Klanjscek et al.  
525 2006, Arnould-Pétré et al. 2020 this issue), or (3) to be integrated into a dynamic network by adding knowledge  
526 about interaction with other species (Ren et al. 2010, 2012). Adding some data from extra experiments would  
527 easily enable further development of these models for ecophysiological or ecotoxicological applications (Muller  
528 and Nisbet 1997, Pouvreau et al. 2006, Peeters et al. 2010, Sarà et al. 2011), or to improve knowledge about  
529 development stages, behaviour or reproduction (Pecquerie et al. 2009, Rico-Villa et al. 2010, Kooijman et al.  
530 2011).

532 In this study, we wanted to explore whether the amount of data that was available to build these models were  
533 sufficient to see the known physiological and morphological differences between the two morphotypes, and  
534 results show that more data are necessary.

535  
536 To conclude, we advise the use of DEB approach for ecological modelling for Antarctic case studies but  
537 modellers should be aware of the necessity to calibrate models with accurate data to fine tune results. Among  
538 these data, the description of the species habitat is complex information to be integrated into a model and most  
539 of the time only partial information is available. Working in narrow scale areas where habitat is known and  
540 described and where experiments can be run might be a good option.

541 Our study also highlights the interest of DEB models to reuse data from published experiments from historical  
542 published works from Antarctic campaigns and highlights the importance of precisely documenting the  
543 associated metadata (notably the description of the environment and the conditions in which the limpets are  
544 living), data that is not always available.

## 546 **Acknowledgements**

547 We are thankful to Philippe Pernet for *N. concinna* pictures, and Jonathan Flye-Sainte-Marie, Jean-François  
548 Cudennec for sclerochronology protocol advices, Eric Dabas, Rémi Laffont for sclerochronology lab trials.

549 This work was supported by a “Fonds pour la formation à la Recherche dans l’Industrie et l’Agriculture” (FRIA)  
550 and “Bourse fondation de la mer” grants to C. Guillaumot. SMOR was supported by Natural Environment  
551 Research Council core funding to the British Antarctic Survey.

552 This is contribution no. 40 to the vERSO project ([www.versoproject.be](http://www.versoproject.be)), funded by the Belgian Science Policy  
553 Office (BELSPO, contract n°BR/132/A1/vERSO). Research was also financed by the “Refugia and Ecosystem  
554 Tolerance in the Southern Ocean” project (RECTO; BR/154/A1/RECTO) funded by the Belgian Science Policy  
555 Office (BELSPO), this study being contribution number 14.

## 557 **Authors’ contribution**

558 C. Guillaumot: Conceptualization, Methodology, Writing

559 T. Saucède: Supervision, Validation, review & editing

560 S.A. Morley: Data acquisition, Validation, review & editing

561 S. Augustine: Methodology, Validation, review & editing

562 B. Danis: Supervision, Validation, review & editing

563 S.A.L.M. Kooijman: Data curation, Methodology, Validation, review & editing

## References

- Agüera**, A., Collard, M., Jossart, Q., Moreau, C., & Danis, B. (2015). Parameter estimations of dynamic energy budget (DEB) model over the life history of a key Antarctic species: the Antarctic sea star *Odontaster validus* Koehler, 1906. *PloS one*, *10*(10), e0140078.
- Agüera**, A., Ahn, I. Y., Guillaumot, C., & Danis, B. (2017). A Dynamic Energy Budget (DEB) model to describe *Laternula elliptica* (King, 1832) seasonal feeding and metabolism. *PloS one*, *12*(8), e0183848.
- Ansaldo**, M., Sacristán, H., & Wider, E. (2007). Does starvation influence the antioxidant status of the digestive gland of *Nacella concinna* in experimental conditions?. *Comparative Biochemistry and Physiology Part C: Toxicology & Pharmacology*, *146*(1-2), 118-123.
- Aranzamendi**, M. C., Sahade, R., Tatián, M., & Chiappero, M. B. (2008). Genetic differentiation between morphotypes in the Antarctic limpet *Nacella concinna* as revealed by inter-simple sequence repeat markers. *Marine Biology*, *154*(5), 875-885.
- Arnould-Pétré** M., Guillaumot C, Danis B, Féral J-P, Saucède T. (this issue). Individual-based model of population dynamics in *Abatus cordatus*, a sea urchin of the Kerguelen (Southern Ocean), under changing environmental conditions
- Baas**, J., & Kooijman, S. A. (2015). Sensitivity of animals to chemical compounds links to metabolic rate. *Ecotoxicology*, *24*(3), 657-663.
- Barnes**, D. K., & Peck, L. S. (2008). Vulnerability of Antarctic shelf biodiversity to predicted regional warming. *Climate Research*, *37*(2-3), 149-163.
- Barnes**, D. K., & Souster, T. (2011). Reduced survival of Antarctic benthos linked to climate-induced iceberg scouring. *Nature Climate Change*, *1*(7), 365-368.
- Beaumont**, A. R., & Wei, J. H. (1991). Morphological and genetic variation in the Antarctic limpet *Nacella concinna* (Strebel, 1908). *Journal of Molluscan Studies*, *57*(4), 443-450.

- 598 **Bers**, A. V., Momo, F., Schloss, I. R., & Abele, D. (2013). Analysis of trends and sudden changes in long-term  
599 environmental data from King George Island (Antarctica): relationships between global climatic oscillations and  
600 local system response. *Climatic Change*, 116(3-4), 789-803.
- 601
- 602 **Bevelhimer**, M. S., Stein, R. A., & Carline, R. F. (1985). Assessing significance of physiological differences  
603 among three esocids with a bioenergetics model. *Canadian Journal of Fisheries and Aquatic Sciences*, 42(1),  
604 57-69.
- 605
- 606 **Bouzaza**, Z., & Mezali, K. (2013). Etude systématique, phylogénétique et phylogéographique de quelques  
607 espèces de Patelles. *Rap. Comm int Mer Médit* 40: 859.
- 608
- 609 **Bouzaza**, Z., & Mezali, K. (2018). Discriminant-based study of the shell morphometric relationships of *Patella*  
610 *caerulea* (Gastropoda: Prosobranchia) of the western Mediterranean Sea. *Turkish Journal of Zoology*, 42(5),  
611 513-522.
- 612
- 613 **Branch**, G. M. (1975). Ecology of *Patella* species from the Cape Peninsula, South Africa. IV. Desiccation.  
614 *Marine biology*, 32(2), 179-188.
- 615
- 616 **Branch**, G. M. (1981). The ecology of limpets: physical factors, energy flow, and ecological interactions.  
617 *Oceanography and Marine Biology: Annual Reviews*, 19, 235-380.
- 618
- 619 **Branch**, G. M. (1985). Limpets: evolution and adaptation. In *The mollusca*. Trueman ER, Clarke MR eds,  
620 Orlando Academic Press 187–220 pp.
- 621
- 622 **Brêthes**, J. C., Ferreyra, G., & De la Vega, S. (1994). Distribution, growth and reproduction of the limpet  
623 *Nacella (Patinigera) concinna* (Strebel 1908) in relation to potential food availability, in Esperanza Bay  
624 (Antarctic Peninsula). *Polar Biology*, 14(3), 161-170.
- 625
- 626 **Butlin**, R. K., Galindo, J., & Grahame, J. W. (2008). Sympatric, parapatric or allopatric: the most important way  
627 to classify speciation?. *Philosophical Transactions of the Royal Society B: Biological Sciences*, 363(1506),  
628 2997-3007.
- 629
- 630 **Cadée**, G. C. (1999). Shell damage and shell repair in the Antarctic limpet *Nacella concinna* from King George  
631 Island. *Journal of Sea Research*, 41(1-2), 149-161.

632

633 **Chwedorzewska**, K., Korczak, M., Bednarek, P., & Markowska-Potocka, M. (2010). Low genetic differentiation  
634 between two morphotypes of the gastropod *Nacella concinna* from Admiralty Bay, Antarctica. *Polish Polar*  
635 *Research*, 31(2), 195-200.

636

637 **Clarke**, A. (1989). Faecal production and an estimate of food intake in the wild of the Antarctic limpet *Nacella*  
638 *concinna* (Strebel). *Journal of Molluscan Studies*, 55(2), 261-262.

639

640 **Clark**, M. S., Fraser, K. P., & Peck, L. S. (2008). Antarctic marine molluscs do have an HSP70 heat shock  
641 response. *Cell Stress and Chaperones*, 13(1), 39-49.

642

643 **Clarke**, A., Meredith, M. P., Wallace, M. I., Brandon, M. A., & Thomas, D. N. (2008). Seasonal and interannual  
644 variability in temperature, chlorophyll and macronutrients in northern Marguerite Bay, Antarctica. *Deep Sea*  
645 *Research Part II: Topical Studies in Oceanography*, 55(18-19), 1988-2006.

646

647 **Clark**, M. S., & Peck, L. S. (2009). HSP70 heat shock proteins and environmental stress in Antarctic marine  
648 organisms: a mini-review. *Marine genomics*, 1(2), 11-18.

649

650 **Constable**, A., Costa, D., Murphy, E., Hofmann, E., Schofield, O., Press, A., Johnson, N.M., Newman, L.  
651 (2014). Chapter 9.3. Assessing status and change in Southern Ocean Ecosystems. In: De Broyer C., Koubbi  
652 P., Griffiths H.J., Raymond B., Udekem d'Acoz C. d', et al. (eds.). Biogeographic Atlas of the Southern Ocean.  
653 Scientific Committee on Antarctic Research, Cambridge, pp. 404-407.

654

655 **Danis**, B., Christiansen, H., Guillaumot, C., Heindler, F.M., Houston, R., Jossart, Q., Lucas, K., Moreau, C.,  
656 Pasotti, F., Robert, H., Wallis, B., and Saucède, T. (2019). "Report of the Belgica121 expedition to the West  
657 Antarctic Peninsula".

658

659 **DeAngelis**, D. L., Rose, K. A., & Huston, M. A. (1994). Individual-oriented approaches to modeling ecological  
660 populations and communities. In *Frontiers in mathematical biology* (pp. 390-410). Springer, Berlin, Heidelberg.

661

662 **Denny**, M. W., & Blanchette, C. A. (2000). Hydrodynamics, shell shape, behavior and survivorship in the owl  
663 limpet *Lottia gigantea*. *Journal of Experimental Biology*, 203(17), 2623-2639.

664

665 **Elith**, J., H. Graham, C., P. Anderson, R., Dudík, M., Ferrier, S., Guisan, A., ... & Li, J. (2006). Novel methods  
666 improve prediction of species' distributions from occurrence data. *Ecography*, 29(2), 129-151.  
667

668 **Espinosa**, F., Rivera-Ingraham, G. A., Fa, D., & García-Gómez, J. C. (2009). Effect of human pressure on  
669 population size structures of the endangered ferruginean limpet: toward future management measures. *Journal*  
670 *of Coastal Research*, 857-863.  
671

672 **Fraser**, K. P., Clarke, A., & Peck, L. S. (2007). Growth in the slow lane: protein metabolism in the Antarctic  
673 limpet *Nacella concinna* (Strebel 1908). *Journal of Experimental Biology*, 210(15), 2691-2699.  
674

675 **Freitas**, V., Cardoso, J. F., Lika, K., Peck, M. A., Campos, J., Kooijman, S. A., & Van der Veer, H. W. (2010).  
676 Temperature tolerance and energetics: a dynamic energy budget-based comparison of North Atlantic marine  
677 species. *Philosophical Transactions of the Royal Society B: Biological Sciences*, 365(1557), 3553-3565.  
678

679 **Gatti**, P., Petitgas, P., & Huret, M. (2017). Comparing biological traits of anchovy and sardine in the Bay of  
680 Biscay: A modelling approach with the Dynamic Energy Budget. *Ecological Modelling*, 348, 93-109.  
681

682 **Goedegebuure**, M., Melbourne-Thomas, J., Corney, S. P., McMahon, C. R., & Hindell, M. A. (2018). Modelling  
683 southern elephant seals *Mirounga leonina* using an individual-based model coupled with a dynamic energy  
684 budget. *PloS one*, 13(3), e0194950.  
685

686 **González-Wevar**, C. A., David, B., & Poulin, E. (2011). Phylogeography and demographic inference in *Nacella*  
687 (*Patinigera*) *concinna* (Strebel, 1908) in the western Antarctic Peninsula. *Deep Sea Research Part II: Topical*  
688 *Studies in Oceanography*, 58(1-2), 220-229.  
689

690 **González-Wevar**, C. A., Hüne, M., Rosenfeld, S., Nakano, T., Saucède, T., Spencer, H., & Poulin, E. (2018).  
691 Systematic revision of *Nacella* (Patellogastropoda: Nacellidae) based on a complete phylogeny of the genus,  
692 with the description of a new species from the southern tip of South America. *Zoological Journal of the Linnean*  
693 *Society*, 186(2), 303-336.  
694

695 **Grandfils**, R. (1982). Contribución al conocimiento de *Patella ferruginea* (Gmelin, 1789). *Iberus*, 2, 57-69.  
696

697 **Gray**, D. R. & Hodgson, A. N. (2003). Growth and reproduction in the high-shore South African limpet *Helcion*  
698 *pectunculus* (Mollusca: Patellogastropoda). *African Zoology*, 38(2), 371-386.

699

700 **Guillaumot, C.** (2019a). AmP *Adamussium colbecki*, version 2019/05/20,  
701 [http://www.bio.vu.nl/thb/deb/deblab/add\\_my\\_pet/entries\\_web/Adamussium\\_colbecki/Adamussium\\_colbecki\\_re](http://www.bio.vu.nl/thb/deb/deblab/add_my_pet/entries_web/Adamussium_colbecki/Adamussium_colbecki_re)  
702 [s.html](http://www.bio.vu.nl/thb/deb/deblab/add_my_pet/entries_web/Adamussium_colbecki/Adamussium_colbecki_re)

703

704 **Guillaumot, C.** (2019b). AmP *Nacella concinna*  
705 [https://www.bio.vu.nl/thb/deb/deblab/add\\_my\\_pet/entries\\_web/Nacella\\_concinna/Nacella\\_concinna\\_res.html](https://www.bio.vu.nl/thb/deb/deblab/add_my_pet/entries_web/Nacella_concinna/Nacella_concinna_res.html)  
706

707

708 **Gutt, J., Zurell, D., Bracegridle, T., Cheung, W., Clark, M., Convey, P., ... & Griffiths, H.** (2012). Correlative and  
709 dynamic species distribution modelling for ecological predictions in the Antarctic: a cross-disciplinary concept.  
710 *Polar Research*, 31(1), 11091.

711

712 **Gutt, J., Isla, E., Bertler, A. N., Bodeker, G. E., Bracegirdle, T. J., Cavanagh, R. D., ... & De Master, D.** (2018).  
713 Cross-disciplinarity in the advance of Antarctic ecosystem research. *Marine genomics*, 37, 1-17.

714

715 **Halanych, K. M., & Mahon, A. R.** (2018). Challenging Dogma Concerning Biogeographic Patterns of Antarctica  
716 and the Southern Ocean. *Annual Review of Ecology, Evolution, and Systematics*, 49, 355-378.

717

718 **Hargens, A. R., & Shabica, S. V.** (1973). Protection against lethal freezing temperatures by mucus in an  
719 Antarctic limpet. *Cryobiology*, 10(4), 331-337.

720

721 **Henley, S. F., Schofield, O. M., Hendry, K. R., Schloss, I. R., Steinberg, D. K., Moffat, C., ... & Rozema, P. D.**  
722 (2019). Variability and change in the west Antarctic Peninsula marine system: Research priorities and  
723 opportunities. *Progress in Oceanography*, 173, 208-237.

724

725 **Henschke, N., Pakhomov, E. A., Groeneveld, J., & Meyer, B.** (2018). Modelling the life cycle of *Salpa*  
726 *thompsoni*. *Ecological modelling*, 387, 17-26.

727

728 **Hoffman, J. I., Peck, L. S., Hillyard, G., Zieritz, A., & Clark, M. S.** (2010). No evidence for genetic  
729 differentiation between Antarctic limpet *Nacella concinna* morphotypes. *Marine Biology*, 157(4), 765-778.

730

731 **Holsman, K. K., Ianelli, J., Aydin, K., Punt, A. E., & Moffitt, E. A.** (2016). A comparison of fisheries biological  
732 reference points estimated from temperature-specific multi-species and single-species climate-enhanced stock  
assessment models. *Deep Sea Research Part II: Topical Studies in Oceanography*, 134, 360-378.



733

734 **Houlihan**, D. F., & Allan, D. (1982). Oxygen consumption of some Antarctic and British gastropods: an  
735 evaluation of cold adaptation. *Comparative Biochemistry and Physiology Part A: Physiology*, 73(3), 383-387.

736

737 **Hogeweg**, P., & Hesper, B. (1990). Individual-oriented modelling in ecology. *Mathematical and Computer*  
738 *Modelling*, 13(6), 83-90.

739

740 **Jager**, T., Barsi, A., Hamda, N. T., Martin, B. T., Zimmer, E. I., & Ducrot, V. (2014). Dynamic energy budgets in  
741 population ecotoxicology: Applications and outlook. *Ecological Modelling*, 280, 140-147.

742

743 **Jager**, T., & Ravagnan, E. (2015). Parameterising a generic model for the dynamic energy budget of Antarctic  
744 krill *Euphausia superba*. *Marine Ecology Progress Series*, 519, 115-128.

745

746 **Johannesson**, K. (2003). Evolution in Littorina: ecology matters. *Journal of Sea Research*, 49(2), 107-117.

747

748 **Jusup**, M., Sousa, T., Domingos, T., Labinac, V., Marn, N., Wang, Z., & Klanjšček, T. (2017). Physics of  
749 metabolic organization. *Physics of life reviews*, 20, 1-39.

750

751 **Kaiser**, S., Brandão, S. N., Brix, S., Barnes, D. K., Bowden, D. A., Ingels, J., ... & Bax, N. (2013). Patterns,  
752 processes and vulnerability of Southern Ocean benthos: a decadal leap in knowledge and understanding.  
753 *Marine biology*, 160(9), 2295-2317.

754

755 **Kearney**, M. R., Matzelle, A., & Helmuth, B. (2012). Biomechanics meets the ecological niche: the importance  
756 of temporal data resolution. *Journal of Experimental Biology*, 215(6), 922-933.

757

758 **Kearney**, M. R., Domingos, T., & Nisbet, R. (2015). Dynamic energy budget theory: an efficient and general  
759 theory for ecology. *Bioscience*, 65(4), 341-341.

760

761 **Kennicutt**, M. C., Chown, S. L., Cassano, J. J., Liggett, D., Massom, R., Peck, L. S., ... & Sutherland, W. J.  
762 (2014). Polar research: six priorities for Antarctic science. *Nature News*, 512(7512), 23.

763

764 **Kennicutt**, M. C., Chown, S. L., Cassano, J. J., Liggett, D., Peck, L. S., Massom, R., ... & Allison, I. (2015). A  
765 roadmap for Antarctic and Southern Ocean science for the next two decades and beyond. *Antarctic Science*,  
766 27(1), 3-18.

767 Kennicutt II, M. C., Bromwich, D., Liggett, D., Njåstad, B., Peck, L., Rintoul, S. R., ... & Cassano, J. (2019).  
768 Sustained Antarctic Research: A 21st century imperative. *One Earth*, 1(1), 95-113.  
769

770 **King**, J. C., Turner, J., Marshall, G. J., Connolley, W. M., & Lachlan-Cope, T. A. (2003). Antarctic Peninsula  
771 climate variability and its causes as revealed by analysis of instrumental records. *Antarctic Peninsula climate*  
772 *variability: historical and paleoenvironmental perspectives*, 79, 17-30.  
773

774 **Klanjscek**, T., Caswell, H., Neubert, M. G., & Nisbet, R. M. (2006). Integrating dynamic energy budgets into  
775 matrix population models. *Ecological modelling*, 196(3-4), 407-420.  
776

777 **Kooijman**, S. A. L. M. (2010). *Dynamic energy budget theory for metabolic organisation*. Cambridge university  
778 press.  
779

780 **Kooijman**, S. A. L. M., Pecquerie, L., Augustine, S., & Jusup, M. (2011). Scenarios for acceleration in fish  
781 development and the role of metamorphosis. *Journal of sea research*, 66(4), 419-423.  
782

783 **Kooijman**, B., Jean, F., Augustine, S. (2017). AmP *Patella vulgata*, version 2017/01/30,  
784 [https://www.bio.vu.nl/thb/deb/deblab/add\\_my\\_pet/entries\\_web/Patella\\_vulgata/Patella\\_vulgata\\_res.html](https://www.bio.vu.nl/thb/deb/deblab/add_my_pet/entries_web/Patella_vulgata/Patella_vulgata_res.html)  
785

786 **Lika**, K., Kearney, M. R., Freitas, V., van der Veer, H. W., van der Meer, J., Wijsman, J. W., ... & Kooijman, S.  
787 A. (2011a). The "covariation method" for estimating the parameters of the standard Dynamic Energy Budget  
788 model I: Philosophy and approach. *Journal of Sea Research*, 66(4), 270-277.  
789

790 **Lika**, K., Augustine, S. & Kooijman S.A.L.M. (this issue). The use of augmented loss functions for estimating  
791 Dynamic Energy Budget parameters.  
792

793 **Mariño**, J., Augustine, S., Dufour, S. C., & Hurford, A. (2019). Dynamic Energy Budget theory predicts smaller  
794 energy reserves in thyasirid bivalves that harbour symbionts. *Journal of Sea Research*, 143, 119-127.  
795

796 **Markowska**, M., & Kidawa, A. (2007). Encounters between Antarctic limpets, *Nacella concinna*, and predatory  
797 sea stars, *Lysasterias* sp., in laboratory and field experiments. *Marine biology*, 151(5), 1959-1966.  
798

799 **Marques**, G. M., Mateus, M., & Domingos, T. (2014). Can we reach consensus between marine ecological  
800 models and DEB theory? A look at primary producers. *Journal of sea research*, 94, 92-104

- 801
- 802 **Marques**, G. M., Augustine, S., Lika, K., Pecquerie, L., Domingos, T., & Kooijman, S. A. (2018). The AmP  
803 project: comparing species on the basis of dynamic energy budget parameters. *PLoS computational biology*,  
804 *14*(5), e1006100.
- 805
- 806 **Marques**, G. M., Lika, K., Augustine, S., Pecquerie, L. & Kooijman, S. A. L. M. (2019). Fitting Multiple Models  
807 to Multiple Data Sets. *J. Sea Res.* *143*: 48-56
- 808
- 809 **Marn**, N., Jusup, M., Catteau, S., Kooijman, S. A. L. M., & Klanjšček, T. (2019). Comparative physiological  
810 energetics of Mediterranean and North Atlantic loggerhead turtles. *Journal of sea research*, *143*, 100-118.
- 811
- 812 **Marsh**, A. G., Maxson, R. E., & Manahan, D. T. (2001). High macromolecular synthesis with low metabolic  
813 cost in Antarctic sea urchin embryos. *Science*, *291*(5510), 1950-1952.
- 814
- 815 **Mauro**, A., Arculeo, M., & Parrinello, N. (2003). Morphological and molecular tools in identifying the  
816 Mediterranean limpets *Patella caerulea*, *Patella aspera* and *Patella rustica*. *Journal of Experimental Marine*  
817 *Biology and Ecology*, *295*(2), 131-143.
- 818
- 819 **McClintock**, J. B. (1994). Trophic biology of Antarctic shallow-water echinoderms. *Marine ecology progress*  
820 *series. Oldendorf*, *111*(1), 191-202.
- 821
- 822 **Meredith**, M. P., & King, J. C. (2005). Rapid climate change in the ocean west of the Antarctic Peninsula  
823 during the second half of the 20th century. *Geophysical Research Letters*, *32*(19).
- 824
- 825 **Morley**, S. A., Lurman, G. J., Skepper, J. N., Pörtner, H. O., & Peck, L. S. (2009). Thermal plasticity of  
826 mitochondria: a latitudinal comparison between Southern Ocean molluscs. *Comparative Biochemistry and*  
827 *Physiology Part A: Molecular & Integrative Physiology*, *152*(3), 423-430.
- 828
- 829 **Morley**, S. A., Clark, M. S., & Peck, L. S. (2010). Depth gradients in shell morphology correlate with thermal  
830 limits for activity and ice disturbance in Antarctic limpets. *Journal of Experimental Marine Biology and Ecology*,  
831 *390*(1), 1-5.
- 832

833 **Morley**, S. A., Lemmon, V., Obermüller, B. E., Spicer, J. I., Clark, M. S., & Peck, L. S. (2011). Duration  
834 tenacity: a method for assessing acclimatory capacity of the Antarctic limpet, *Nacella concinna*. *Journal of*  
835 *experimental marine biology and ecology*, 399(1), 39-42.

836

837 **Morley**, S. A., Martin, S. M., Day, R. W., Ericson, J., Lai, C. H., Lamare, M., ... & Peck, L. S. (2012). Thermal  
838 reaction norms and the scale of temperature variation: latitudinal vulnerability of intertidal nacellid limpets to  
839 climate change. *PloS one*, 7(12).

840

841 **Morley**, S. A., Lai, C. H., Clarke, A., Tan, K. S., Thorne, M. A., & Peck, L. S. (2014). Limpet feeding rate and  
842 the consistency of physiological response to temperature. *Journal of Comparative Physiology B*, 184(5), 563-  
843 570.

844

845 **Muller**, E. B., & Nisbet, R. M. (1997). Modeling the effect of toxicants on the parameters of dynamic energy  
846 budget models. In *Environmental Toxicology and Risk Assessment: Modeling and Risk Assessment Sixth*  
847 *Volume*. ASTM International.

848

849 **Nisbet**, R. M., Jusup, M., Klanjscek, T., & Pecquerie, L. (2012). Integrating dynamic energy budget (DEB)  
850 theory with traditional bioenergetic models. *Journal of Experimental Biology*, 215(6), 892-902.

851

852 **Nolan**, C. P. (1991). Size, shape and shell morphology in the Antarctic limpet *Nacella concinna* at Signy  
853 Island, South Orkney Islands. *Journal of Molluscan Studies*, 57(2), 225-238.

854

855 **Obermüller**, B. E., Morley, S. A., Clark, M. S., Barnes, D. K., & Peck, L. S. (2011). Antarctic intertidal limpet  
856 ecophysiology: A winter–summer comparison. *Journal of experimental marine biology and ecology*, 403(1-2),  
857 39-45.

858

859 **Paracuellos**, M., Nevado, J. C., Moreno, D., Giménez, A., & Alesina, J. J. (2003). Conservational status and  
860 demographic characteristics of *Patella ferruginea* Gmelin, 1791 (Mollusca, gastropoda) on the Alboran Island  
861 (Western Mediterranean). *Animal Biodiversity and Conservation*, 26(2), 29-37.

862

863 **Peck**, L. S. (1989). Temperature and basal metabolism in two Antarctic marine herbivores. *Journal of*  
864 *Experimental Marine Biology and Ecology*, 127(1), 1-12.

865

866 **Peck**, L.S. & Brey, T. (1996) Radiocarbon bomb signals verify biennial growth bands in the shells of 50 year

867 old brachiopods from Antarctica. *Nature*, 380, 206–207.

868

869 **Peck**, L. S. (2002). Ecophysiology of Antarctic marine ectotherms: limits to life. In *Ecological Studies in the*  
870 *Antarctic Sea Ice Zone* (pp. 221-230). Springer, Berlin, Heidelberg.

871

872 **Peck**, L. S., Powell, D. K., & Tyler, P. A. (2007). Very slow development in two Antarctic bivalve molluscs, the  
873 infaunal clam *Laternula elliptica* and the scallop *Adamussium colbecki*. *Marine Biology*, 150(6), 1191-1197.

874

875 **Peck**, L. S., Clark, M. S., Morley, S. A., Massey, A., & Rossetti, H. (2009). Animal temperature limits and  
876 ecological relevance: effects of size, activity and rates of change. *Functional Ecology*, 23(2), 248-256.

877

878 **Peck**, L. S., Heiser, S., & Clark, M. S. (2016). Very slow embryonic and larval development in the Antarctic  
879 limpet *Nacella polaris*. *Polar Biology*, 39(12), 2273-2280.

880

881 **Peeters**, F., Li, J., Straile, D., Rothhaupt, K. O., & Vijverberg, J. (2010). Influence of low and decreasing food  
882 levels on Daphnia-algal interactions: Numerical experiments with a new dynamic energy budget model.  
883 *Ecological Modelling*, 221(22), 2642-2655.

884

885 **Pecquerie**, L., Petitgas, P., & Kooijman, S. A. (2009). Modeling fish growth and reproduction in the context of  
886 the Dynamic Energy Budget theory to predict environmental impact on anchovy spawning duration. *Journal of*  
887 *Sea Research*, 62(2-3), 93-105.

888

889 **Peterson**, A. T., Soberón, J., Pearson, R. G., Anderson, R. P., Martínez-Meyer, E., Nakamura, M., & Araújo,  
890 M. B. (2011). *Ecological niches and geographic distributions (MPB-49)* (Vol. 56). Princeton University Press.

891

892 **Petter**, G., Weitere, M., Richter, O., & Moenickes, S. (2014). Consequences of altered temperature and food  
893 conditions for individuals and populations: a dynamic energy budget analysis for *Corbicula fluminea* in the  
894 Rhine. *Freshwater biology*, 59(4), 832-846.

895

896 **Picken**, G. B. (1980). The distribution, growth, and reproduction of the Antarctic limpet *Nacella (Patinigera)*  
897 *concinna* (Strebel, 1908). *Journal of experimental marine biology and ecology*, 42(1), 71-85.

898

899 **Picken**, G. B., & Allan, D. (1983). Unique spawning behaviour by the Antarctic limpet *Nacella (Patinigera)*  
900 *concinna* (Strebel, 1908). *Journal of Experimental Marine Biology and Ecology*, 71(3), 283-287.

901  
902  
903  
904  
905  
906  
907  
908  
909  
910  
911  
912  
913  
914  
915  
916  
917  
918  
919  
920  
921  
922  
923  
924  
925  
926  
927  
928  
929  
930  
931  
932  
933  
934

**Pörtner**, H. O., Peck, L., & Somero, G. (2007). Thermal limits and adaptation in marine Antarctic ectotherms: an integrative view. *Philosophical Transactions of the Royal Society B: Biological Sciences*, 362(1488), 2233-2258.

**Pouvreau**, S., Bourles, Y., Lefebvre, S., Gangnery, A., & Alunno-Bruscia, M. (2006). Application of a dynamic energy budget model to the Pacific oyster, *Crassostrea gigas*, reared under various environmental conditions. *Journal of Sea Research*, 56(2), 156-167.

**Powell**, A. W. B. (1951). Antarctic and subantarctic mollusca: Pelecypoda and Gastropoda. *Discov Rep (USA)* 26:49-196

**Ren**, J. S., Ross, A. H., Hadfield, M. G., & Hayden, B. J. (2010). An ecosystem model for estimating potential shellfish culture production in sheltered coastal waters. *Ecological Modelling*, 221(3), 527-539.

**Ren**, J. S., Stenton-Dozey, J., Plew, D. R., Fang, J., & Gall, M. (2012). An ecosystem model for optimising production in integrated multitrophic aquaculture systems. *Ecological Modelling*, 246, 34-46.

**Rico-Villa**, B., Bernard, I., Robert, R., & Pouvreau, S. (2010). A Dynamic Energy Budget (DEB) growth model for Pacific oyster larvae, *Crassostrea gigas*. *Aquaculture*, 305(1-4), 84-94.

**Robertson**, R., El-Haj, A., Clarke, A., Peck, L., & Taylor, E. (2001). The effects of temperature on metabolic rate and protein synthesis following a meal in the isopod *Glyptonotus antarcticus* Eights (1852). *Polar Biology*, 24(9), 677-686.

**Sa Pinto**, A., Branco, M., Sayanda, D., & Alexandrino, P. (2008). Patterns of colonization, evolution and gene flow in species of the genus *Patella* in the Macaronesian Islands. *Molecular ecology*, 17(2), 519-532.

**Sarà**, G., Kearney, M., & Helmuth, B. (2011). Combining heat-transfer and energy budget models to predict thermal stress in Mediterranean intertidal mussels. *Chemistry and Ecology*, 27(2), 135-145.

**Sarà**, G., Palmeri, V., Rinaldi, A., Montalto, V., & Helmuth, B. (2013). Predicting biological invasions in marine habitats through eco-physiological mechanistic models: a case study with the bivalve *Brachidontes pharaonis*. *Diversity and Distributions*, 19(10), 1235-1247.

935

936 **Saraiva**, S., Van der Meer, J., Kooijman, S. A. L. M., Witbaard, R., Philippart, C. J. M., Hippler, D., & Parker, R.  
937 (2012). Validation of a Dynamic Energy Budget (DEB) model for the blue mussel *Mytilus edulis*. Marine  
938 ecology progress series, 463, 141-158.

939

940 **Schloss**, I. R., Abele, D., Moreau, S., Demers, S., Bers, A. V., González, O., & Ferreyra, G. A. (2012).  
941 Response of phytoplankton dynamics to 19-year (1991–2009) climate trends in Potter Cove (Antarctica).  
942 *Journal of marine Systems*, 92(1), 53-66.

943

944 **Schofield**, O., Saba, G., Coleman, K., Carvalho, F., Couto, N., Ducklow, H., ... & Montes-Hugo, M. (2017).  
945 Decadal variability in coastal phytoplankton community composition in a changing West Antarctic Peninsula.  
946 *Deep Sea Research Part I: Oceanographic Research Papers*, 124, 42-54.

947

948 **Serpa**, D., Ferreira, P. P., Ferreira, H., da Fonseca, L. C., Dinis, M. T., & Duarte, P. (2013). Modelling the  
949 growth of white seabream (*Diplodus sargus*) and gilthead seabream (*Sparus aurata*) in semi-intensive earth  
950 production ponds using the Dynamic Energy Budget approach. *Journal of sea research*, 76, 135-145.

951

952 **Shabica**, S. V. (1971). General ecology of Antarctic limpet *Patinigera-Polaris*. *Antarctic Journal of the United*  
953 *States*, 6(5), 160.

954

955 **Shabica**, S. V. (1976) The natural history of the Antarctic limpet *Patinigera polaris* (Hombron and Jacquinot).  
956 Ph. D. Thesis, Oregon State University (Corvallis, Oregon, USA) p. 294

957

958 **Smale**, D. A., & Barnes, D. K. (2008). Likely responses of the Antarctic benthos to climate-related changes in  
959 physical disturbance during the 21st century, based primarily on evidence from the West Antarctic Peninsula  
960 region. *Ecography*, 31(3), 289-305.

961

962 **Souster**, T. A., Morley, S. A., & Peck, L. S. (2018). Seasonality of oxygen consumption in five common  
963 Antarctic benthic marine invertebrates. *Polar Biology*, 41(5), 897-908.

964

965 **Stainthorp**, R., Kooijman, B. (2017). AmP *Sterechinus neumayeri*, version 2017/07/06.  
966 [http://www.bio.vu.nl/thb/deb/deblab/add\\_my\\_pet/entries\\_web/Sterechinus\\_neumayeri/Sterechinus\\_neumayeri](http://www.bio.vu.nl/thb/deb/deblab/add_my_pet/entries_web/Sterechinus_neumayeri/Sterechinus_neumayeri_res.html)  
967 [\\_res.html](http://www.bio.vu.nl/thb/deb/deblab/add_my_pet/entries_web/Sterechinus_neumayeri/Sterechinus_neumayeri_res.html)

968

- 969 **Stammerjohn**, S., Massom, R., Rind, D., & Martinson, D. (2012). Regions of rapid sea ice change: An inter-  
970 hemispheric seasonal comparison. *Geophysical Research Letters*, 39(6), L06501.  
971
- 972 **Stanwell-Smith**, D., & Clarke, A. (1998). The Timing of reproduction in the Antarctic limpet *Nacella concinna*  
973 (Sprell, 1908)(Patellidae) at Signy Island, in relation to environmental variables. *Journal of Molluscan Studies*,  
974 64(1), 123-127.  
975
- 976 **Stenni**, B., Curran, M. A., Abram, N., Orsi, A., Goursaud, S., Masson-Delmotte, V., ... & Steig, E. J. (2017).  
977 Antarctic climate variability on regional and continental scales over the last 2000 years. *Climate Past*, 13,  
978 1609-1634.  
979
- 980 **Strebel**, H. (1908). Dei Gastropoden. Wissenschaftliche Ergebnisse der Schwedischen Südpolar-Expedition,  
981 1901-1903. 6:1-112.  
982
- 983 **Suda**, C. N., Vani, G. S., de Oliveira, M. F., Rodrigues, E., & Lavrado, H. P. (2015). The biology and ecology of  
984 the Antarctic limpet *Nacella concinna*. *Polar Biology*, 38(12), 1949-1969.  
985
- 986 **Teal**, L. R., van Hal, R., van Kooten, T., Ruardij, P., & Rijnsdorp, A. D. (2012). Bio-energetics underpins the  
987 spatial response of North Sea plaice (*Pleuronectes platessa L.*) and sole (*Solea solea L.*) to climate change.  
988 *Global Change Biology*, 18(11), 3291-3305.  
989
- 990 **Thomas**, Y., Mazurié, J., Alunno-Bruscia, M., Bacher, C., Bouget, J. F., Gohin, F., ... & Struski, C. (2011).  
991 Modelling spatio-temporal variability of *Mytilus edulis* (L.) growth by forcing a dynamic energy budget model  
992 with satellite-derived environmental data. *Journal of Sea Research*, 66(4), 308-317.  
993
- 994 **Thomas**, Y., Dumas, F., & Andréfouët, S. (2016). Larval connectivity of pearl oyster through biophysical  
995 modelling; evidence of food limitation and broodstock effect. *Estuarine, Coastal and Shelf Science*, 182, 283-  
996 293.  
997
- 998 **Turner**, J., Lu, H., White, I., King, J. C., Phillips, T., Hosking, J. S., ... & Deb, P. (2016). Absence of 21st  
999 century warming on Antarctic Peninsula consistent with natural variability. *Nature*, 535(7612), 411.  
000
- 001 **van der Meer**, J. (2006). An introduction to Dynamic Energy Budget (DEB) models with special emphasis on  
002 parameter estimation. *Journal of Sea Research*, 56(2), 85-102.



- 003
- 004 **van der Veer**, H. W., Cardoso, J. F., & van der Meer, J. (2006). The estimation of DEB parameters for various  
005 Northeast Atlantic bivalve species. *Journal of Sea Research*, 56(2), 107-124.
- 006
- 007 **Vaughan**, D. G., Marshall, G. J., Connolley, W. M., Parkinson, C., Mulvaney, R., Hodgson, D. A., ... & Turner,  
008 J. (2003). Recent rapid regional climate warming on the Antarctic Peninsula. *Climatic change*, 60(3), 243-274.
- 009
- 010 **Vermeij**, G. J. (1973). Morphological patterns in high-intertidal gastropods: adaptive strategies and their  
011 limitations. *Marine Biology*, 20(4), 319-346.
- 012
- 013 **Walker**, A. J. M. (1972). Introduction to the ecology of the antarctic limpet *Patinigera polaris* (Hombron and  
014 Jacquinot) at Signy Island, South Orkney Islands. *Br Antarctic Surv Bull* 28:49-71
- 015
- 016 **Waller**, C. L., Worland, M. R., Convey, P., & Barnes, D. K. A. (2006). Ecophysiological strategies of Antarctic  
017 intertidal invertebrates faced with freezing stress. *Polar Biology*, 29(12), 1077-1083.
- 018
- 019 **Waller**, C. L., Overall, A., Fitzcharles, E. M., & Griffiths, H. (2017). First report of *Laternula elliptica* in the  
020 Antarctic intertidal zone. *Polar Biology*, 40(1), 227-230.
- 021
- 022 **Wei**, J. H. (1988). *Morphological and genetic variation in natural populations of Antarctic limpet Nacella*  
023 *concinna* (Doctoral dissertation, University of Wales (UCNW, Bangor: Ocean Sciences)).
- 024
- 025 **Weihe**, E., & Abele, D. (2008). Differences in the physiological response of inter-and subtidal Antarctic limpets  
026 *Nacella concinna* to aerial exposure. *Aquatic Biology*, 4(2), 155-166.
- 027
- 028 **Wolcott**, T. G. (1973). Physiological ecology and intertidal zonation in limpets (Acmaea): a critical look at"  
029 limiting factors". *The Biological Bulletin*, 145(2), 389-422.
- 030
- 031 **Xavier**, J. C., Brandt, A., Ropert-Coudert, Y., Badhe, R., Gutt, J., Havermans, C., ... & Kennicutt, M. C. (2016).  
032 Future challenges in Southern Ocean ecology research. *Frontiers in Marine Science*, 3, 94.
- 033
- 034
- 035
- 036