



**HAL**  
open science

## Untargeted metabolic profiling of environmental volatile compounds by Headspace-Solid Phase Micro Extraction-Gas Chromatography-Mass Spectrometry: an introduction to environmental “volatilomics”

Hikmat Ghosson, Mathieu Lazarus, Delphine Raviglione, Chandrashekhar Patil, Marie-Virginie Salvia, Cédric Bertrand

### ► To cite this version:

Hikmat Ghosson, Mathieu Lazarus, Delphine Raviglione, Chandrashekhar Patil, Marie-Virginie Salvia, et al.. Untargeted metabolic profiling of environmental volatile compounds by Headspace-Solid Phase Micro Extraction-Gas Chromatography-Mass Spectrometry: an introduction to environmental “volatilomics”. 11èmes Journées Scientifiques du Réseau Francophone de Métabolomique et Fluxomique (11JSRFMF), May 2018, Liège, Belgium. , 11JSRFMF Abstracts Book, P42, pp.104, 2018, Communications par affiche. <10.13140/RG.2.2.29565.67042>. <hal-02713060>

**HAL Id: hal-02713060**

**<https://hal.science/hal-02713060v1>**

Submitted on 1 Jun 2020

HAL is a multi-disciplinary open access archive for the deposit and dissemination of scientific research documents, whether they are published or not. The documents may come from teaching and research institutions in France or abroad, or from public or private research centers.

L'archive ouverte pluridisciplinaire HAL, est destinée au dépôt et à la diffusion de documents scientifiques de niveau recherche, publiés ou non, émanant des établissements d'enseignement et de recherche français ou étrangers, des laboratoires publics ou privés.



Distributed under a Creative Commons CC BY-NC-ND 4.0 - Attribution - Non-commercial use - No Derivative Works - International License

# Untargeted metabolic profiling of environmental volatile compounds by Headspace-Solid Phase Micro Extraction-Gas Chromatography-Mass Spectrometry: an introduction to environmental “volatilomics”

Hikmat Ghosson<sup>1,2,\*</sup>, Mathieu Lazarus<sup>1,3</sup>, Delphine Raviglione<sup>1</sup>, Chandrashekhar Patil<sup>1</sup>, Marie-Virginie Salvia<sup>1,4</sup>, Cédric Bertrand<sup>1,4,5</sup>

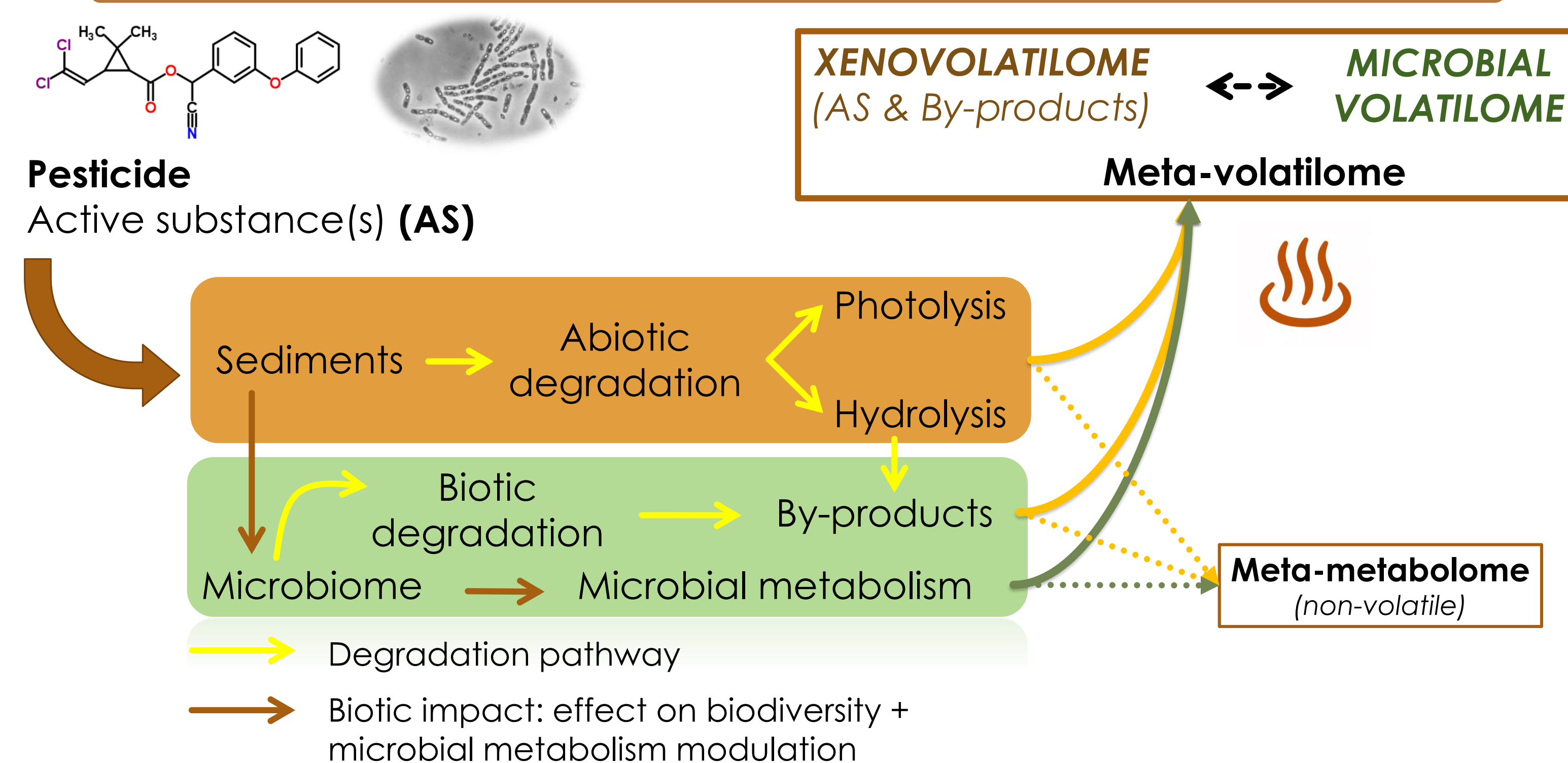
\*: [hikmat.ghosson@univ-perp.fr](mailto:hikmat.ghosson@univ-perp.fr)

- 1: PSL Université Paris: EPHE-UPVD-CNRS, USR 3278 CRIOBE, Université de Perpignan, 52 Avenue Paul Alduy, 66860 Perpignan Cedex, France  
 2: UPVD, UFR Sciences Exactes et Expérimentales, Université de Perpignan Via Domitia, 52 Avenue Paul Alduy, 66860 Perpignan Cedex, France  
 3: Service Qualité, R&D, Cacao (QRD Cacao), Cémoi, 2980 Avenue Julien Panchot, 66000 Perpignan, France  
 4: Laboratoire d'Excellence « CORAIL », Université de Perpignan, 52 Avenue Paul Alduy, 66860 Perpignan Cedex, France  
 5: S.A.S. AkiNaO, Université de Perpignan, 52 Avenue Paul Alduy, 66860 Perpignan Cedex, France

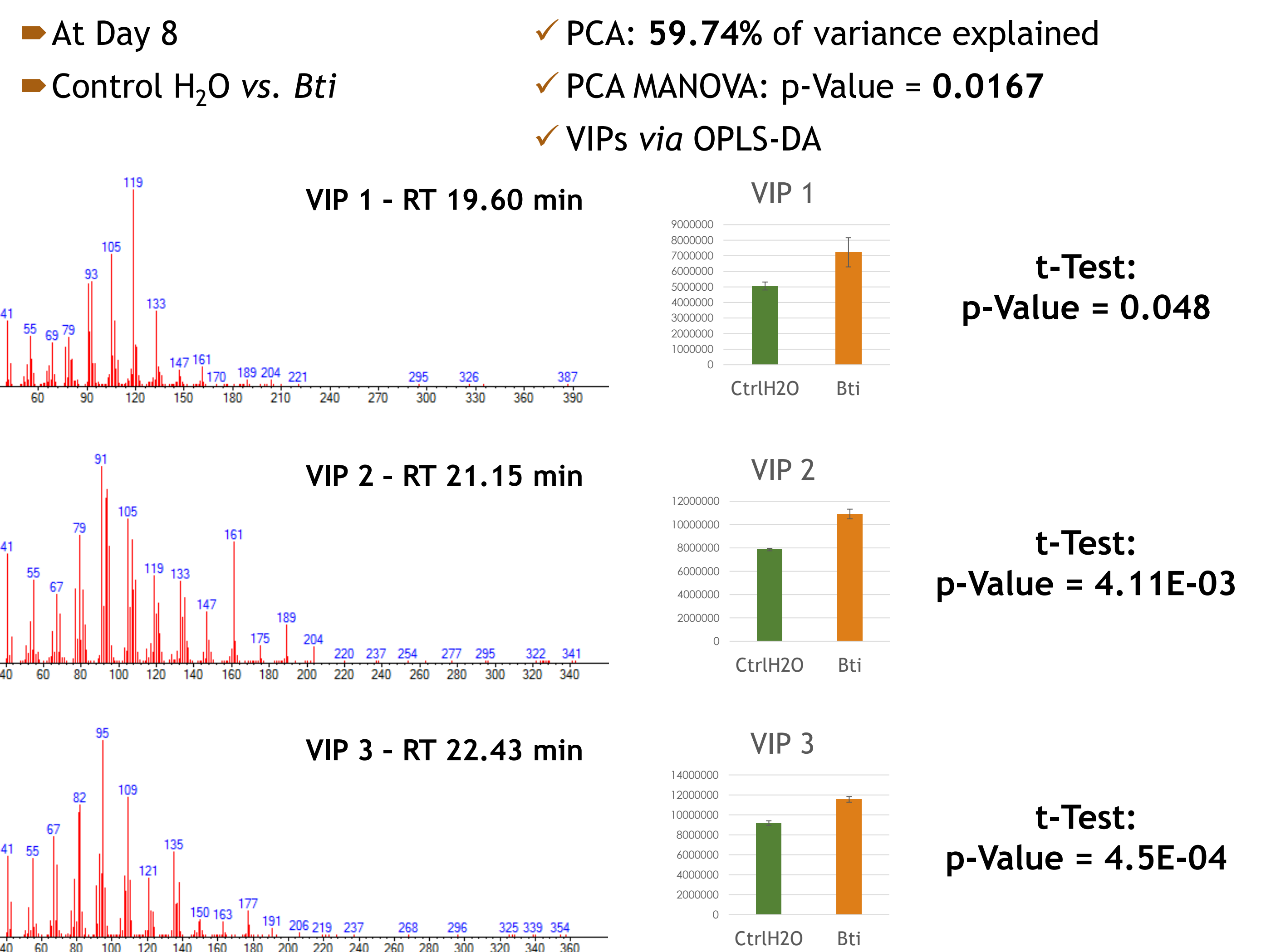
## Abstract

Pesticide use is permanently increasing for several reasons. However, these chemical compounds are threatening human health and environment. Thus, natural pesticides are recently emerging as an alternative solution. In fact, as these biopesticides are issued from nature, they are supposed less harmful versus the environment. However, the evaluation of biopesticides' environmental impact remains an actual challenge. In fact, classical methods e.g. half-life are limited, due to the complexity of biocontrol products. Thus, new omics-based methods are being developed in order to adapt new environmental evaluation protocols. In this context, Environmental Metabolic Footprinting (EMF) was recently developed using Liquid Chromatography-Mass Spectrometry (LC-MS) based metabolomics approach. Recently, a new approach was considered in order to study the volatile compounds in environmental samples. In fact, pesticide degradation can lead to volatile by-products. Moreover, volatile microbial compounds can signalize biodiversity disruptions. Thus, novel Headspace-Solid Phase Micro Extraction-Gas Chromatography-Mass Spectrometry (HS-SPME-GC-MS) based analytical method is being developed, in order to analyze the environmental “Volatilome” (xenovolatilome + microbial volatilome). This methodology shows several advantages: no laborious and complex steps for sample preparation are needed. Therefore, this method reduces time, solvents and chemical reagents consumption, which agrees with green chemistry and reduce analysis cost. Preliminary tests were performed with sediment samples treated with *Bacillus thuringiensis israelensis* (*Bti*); a complex bio-insecticide, and the  $\alpha$ -Cypermethrin, a standard chemical insecticide.

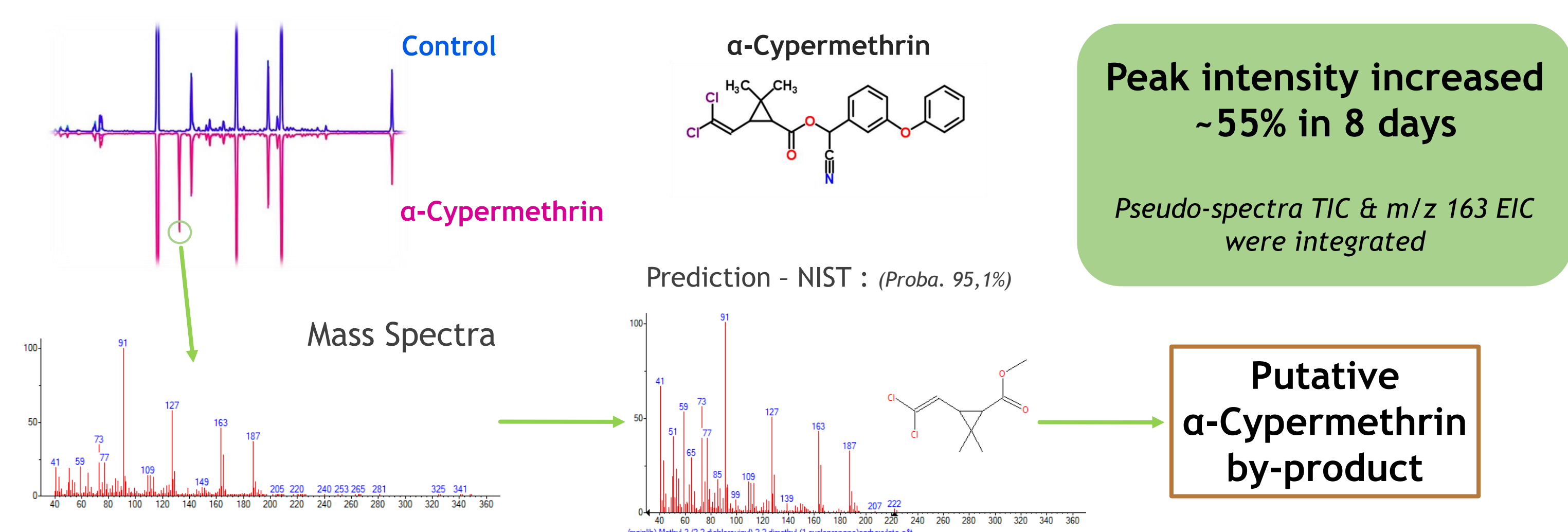
## 1. Introduction to “environmental volatilomics” concept



## 3.2. CtrlH<sub>2</sub>O vs. *Bti* - Variable Importance in Projection



## 3.3. $\alpha$ -Cypermethrin metabolite - Days 0 and 8



## 2. Material and Methods

Matrix studied: Sediments  
 Kinetics: 2 points (Day 0 and Day 8)  
 Incubation in dark at 22±2 °C  
 4 groups applied:

Control H <sub>2</sub> O	Commercial <i>Bti</i>	Control MeOH	Pure $\alpha$ -Cypermethrin
--------------------------	-----------------------	--------------	-----------------------------

**Extraction conditions:**

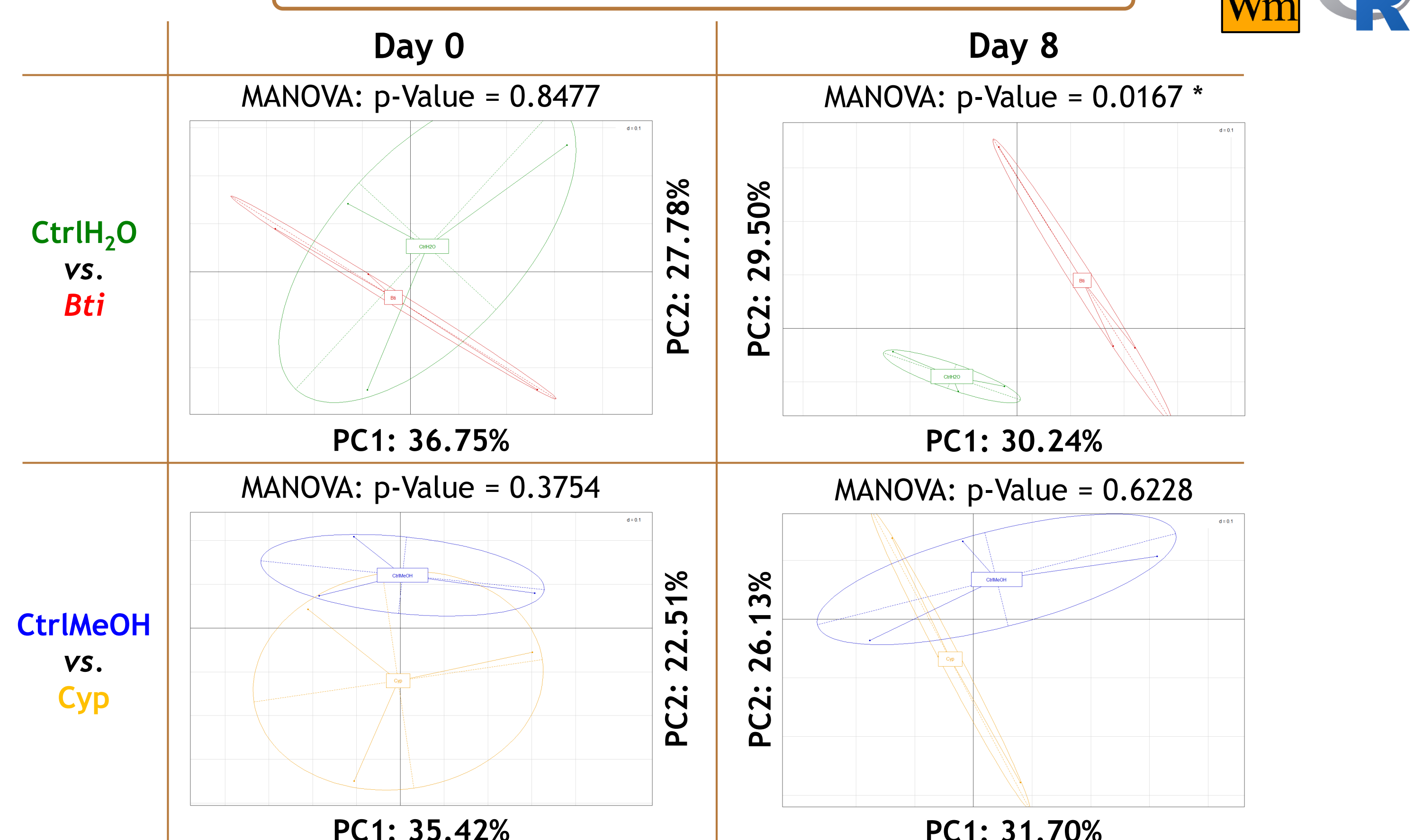
- Temperature: 45 °C
- Incubation: 10 min
- Extraction: 50 min
- Fiber type: DVb/CAR/PDMS

**Analytical system & conditions:**

- Thermo Focus-DSQ II (GC-MS)
- Capillary column: Zebtron ZB-5MS (30 m)
- Gradient: 50-300 °C
- Scan range: 40-400 m/z

## 3. Results and Discussion

### 3.1. Principal Component Analysis



## 4. Application and Perspectives

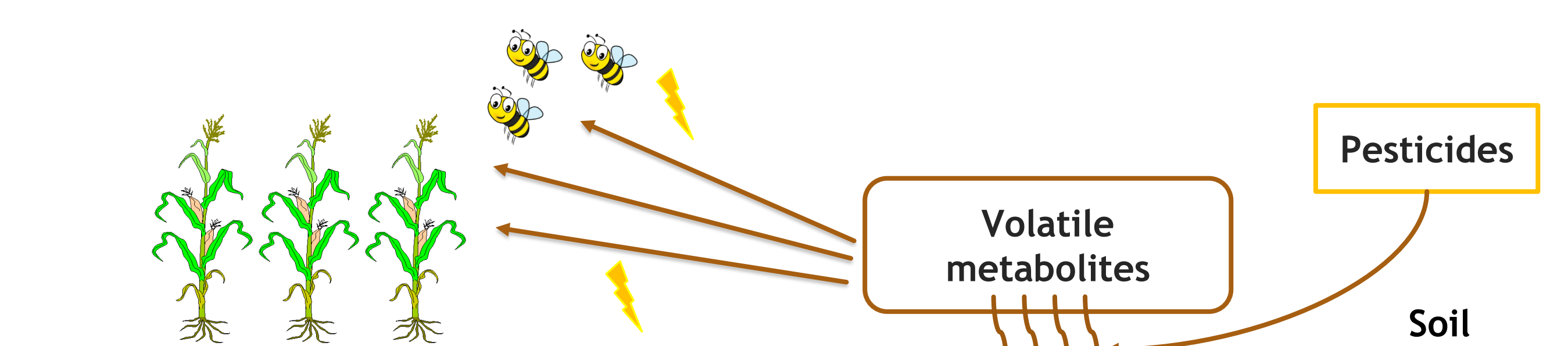
Results demonstrated sufficient sensitivity to discriminate between *Bti* treated samples and control samples

### Perspectives:

- ✓ Enhancing sampling strategy
- ✓ Improving extraction & analytical conditions

### Application:

- ✓ Integration in the EMF approach for resilience time determination
- ✓ Detection of potentially harmful volatile compounds



## References:

- Environmental Metabolic Footprinting: A novel application to study the impact of a natural and a synthetic  $\beta$ -triketone herbicide in soil, Patil C., Calvayrac C., Zhou Y., Romdhane S., Salvia M. V., Cooper J. F., Dayan F., Bertrand C., *Science of The Total Environment*, 1 October 2016. <https://doi.org/10.1016/j.scitotenv.2016.05.071>
- Environmental Metabolic Footprinting (EMF) vs. half-life: a new and integrative proxy for the discrimination between control and pesticides exposed sediments in order to further characterise pesticides' environmental impact, Salvia M. V., Ben Jrad A., Raviglione D., Zhou Y., Bertrand C., *Environmental Science and Pollution Research*, 28 June 2017. <https://doi.org/10.1007/s11356-017-9600-6>

## Acknowledgments

