



Black hole mergers from dwarf to massive galaxies with the NewHorizon and Horizon-AGN simulations

Marta Volonteri, Hugo Pfister, Ricarda S. Beckmann, Yohan Dubois, Monica Colpi, Christopher J. Conselice, Massimo Dotti, Garreth Martin, Ryan Jackson, Katarina Kraljic, et al.

► To cite this version:

Marta Volonteri, Hugo Pfister, Ricarda S. Beckmann, Yohan Dubois, Monica Colpi, et al.. Black hole mergers from dwarf to massive galaxies with the NewHorizon and Horizon-AGN simulations. Monthly Notices of the Royal Astronomical Society, 2020, 498 (2), pp.2219-2238. 10.1093/mnras/staa2384 . hal-02628089

HAL Id: hal-02628089

<https://hal.science/hal-02628089>

Submitted on 25 May 2024

HAL is a multi-disciplinary open access archive for the deposit and dissemination of scientific research documents, whether they are published or not. The documents may come from teaching and research institutions in France or abroad, or from public or private research centers.

L'archive ouverte pluridisciplinaire **HAL**, est destinée au dépôt et à la diffusion de documents scientifiques de niveau recherche, publiés ou non, émanant des établissements d'enseignement et de recherche français ou étrangers, des laboratoires publics ou privés.

Black hole mergers from dwarf to massive galaxies with the NewHorizon and Horizon-AGN simulations

Marta Volonteri,^{1★} Hugo Pfister^{1,2,3}, Ricarda S. Beckmann^{1,4}, Yohan Dubois,¹ Monica Colpi,^{4,5} Christopher J. Conselice,⁶ Massimo Dotti,^{4,5} Garreth Martin^{1,7,8}, Ryan Jackson^{1,9}, Katarina Kraljic,¹⁰ Christophe Pichon,^{1,11} Maxime Trebitsch^{1,12,13}, Suhyoung K. Yi,¹⁴ Julien Devriendt¹⁵ and Sébastien Peirani^{1,16}

¹*Institut d'Astrophysique de Paris, Sorbonne Université, CNRS, UMR 7095, 98 bis bd Arago, F-75014 Paris, France*

²*DARK, Niels Bohr Institute, University of Copenhagen, Blegdamsvej 17, DK-2100 Copenhagen, Denmark*

³*Department of Physics, The University of Hong Kong, Pokfulam Road, Hong Kong, China*

⁴*Dipartimento di Fisica 'G. Occhialini', Università degli Studi di Milano-Bicocca, Piazza della Scienza 3, I-20126 Milano, Italy*

⁵*INFN, Sezione di Milano-Bicocca, Piazza della Scienza 3, I-20126 Milano, Italy*

⁶*Centre for Astronomy and Particle Theory, University of Nottingham, University Park, Nottingham NG7 2RD, UK*

⁷*Steward Observatory, University of Arizona, 933 N. Cherry Ave, Tucson, AZ 85719, USA*

⁸*Korea Astronomy and Space Science Institute, 776 Daedeokdae-ro, Yuseong-gu, Daejeon 34055, Republic of Korea*

⁹*Centre for Astrophysics Research, School of Physics, Astronomy and Mathematics, University of Hertfordshire, Hatfield AL10 9AB, UK*

¹⁰*Institute for Astronomy, Royal Observatory, Edinburgh EH9 3HJ, UK*

¹¹*Korea Institute of Advanced Studies (KIAS) 85 Hoegiro, Dongdaemun-gu, Seoul 02455, Republic of Korea*

¹²*Max-Planck-Institut für Astronomie, Königstuhl 17, D-69117 Heidelberg, Germany*

¹³*Institut für Theoretische Astrophysik, Zentrum für Astronomie der Universität Heidelberg, Albert-Ueberle-Str 2, D-69120 Heidelberg, Germany*

¹⁴*Department of Astronomy and Yonsei University Observatory, Yonsei University, Seoul 03722, Republic of Korea*

¹⁵*Astrophysics, University of Oxford, Denys Wilkinson Building, Oxford OX1 3RH, UK*

¹⁶*Laboratoire Lagrange, Université Côte d'Azur, Observatoire de la Côte d'Azur, CNRS, Boulevard de l'Observatoire CS 34229 - F 06304, Nice, France*

Accepted 2020 July 29. Received 2020 July 7; in original form 2020 May 7

ABSTRACT

Massive black hole (MBH) coalescences are powerful sources of low-frequency gravitational waves. To study these events in the cosmological context, we need to trace the large-scale structure and cosmic evolution of a statistical population of galaxies, from dim dwarfs to bright galaxies. To cover such a large range of galaxy masses, we analyse two complementary simulations: HORIZON-AGN with a large volume and low resolution that tracks the high-mass ($> 10^7 M_\odot$) MBH population, and NEWHORIZON with a smaller volume but higher resolution that traces the low-mass ($< 10^7 M_\odot$) MBH population. While HORIZON-AGN can be used to estimate the rate of inspirals for pulsar timing arrays, NEWHORIZON can investigate MBH mergers in a statistical sample of dwarf galaxies for LISA, which is sensitive to low-mass MBHs. We use the same method to analyse the two simulations, post-processing MBH dynamics to account for time delays mostly determined by dynamical friction and stellar hardening. In both simulations, MBHs typically merge long after galaxies do, so that the galaxy morphology at the time of the MBH merger is no longer determined by the structural disturbances engendered by the galaxy merger from which the MBH coalescence has originated. These time delays cause a loss of high- z MBH coalescences, shifting the peak of the MBH merger rate to $z \sim 1-2$. This study shows how tracking MBH mergers in low-mass galaxies is crucial to probing the MBH merger rate for LISA and investigate the properties of the host galaxies.

Key words: gravitational waves – methods: numerical – quasars: supermassive black holes.

1 INTRODUCTION

Black holes are astrophysical objects that emit radiation over the whole electromagnetic spectrum, from the radio to gamma-rays. When their space–time is highly dynamical, such as in mergers with other black holes, they also emit gravitational waves, as spectacularly demonstrated following the ground-breaking discovery of the first

stellar black hole binary by the LIGO and Virgo collaborations (Abbott et al. 2016).

The frequency at which black holes emit gravitational waves depends on the inverse of the binary mass. To a first approximation, the frequency at coalescence is close to the Keplerian frequency of a test particle revolving at the innermost stable circular orbit around a black hole with mass equal to the mass of the binary. While LIGO–Virgo cannot detect gravitational waves from mergers of black holes much more massive than about $100 M_\odot$ (Mangiagli et al. 2019), experiments with a much longer baseline can detect

* E-mail: martav@iap.fr

them. The ESA space mission LISA (Amaro-Seoane et al. 2017) aims at detecting low-frequency, $\sim 10^{-4} - 1$ mHz, gravitational waves from the coalescence of massive black holes (MBHs) with masses $\sim 10^4 - 10^7 M_\odot$, the TianQin project aims detection at a similar but somewhat reduced mass range (Luo et al. 2016; Feng et al. 2019; Shi et al. 2019), while Pulsar Timing Array experiments (PTA; Jenet et al. 2004, 2005) at nHz frequency probe the monochromatic inspiral of tight MBH binaries with mass $> 10^8 M_\odot$. LISA- and PTA-detectable MBHs are those black holes that inhabit the centres of massive galaxies and that participated in cosmic evolution by shining as quasars.

Gravitational wave experiments alone, as well as multimessenger studies including electromagnetic counterparts, open the possibility of obtaining complementary and unique information on the evolution of MBHs. These studies will allow us to discover MBH ‘seeds’ at high redshift (Sesana, Volonteri & Haardt 2007), to obtain information on the dynamical evolution of MBHs (Bonetti et al. 2019), to assess the relative role of accretion and mergers in establishing scaling relations between MBHs and galaxies (Volonteri & Natarajan 2009), to modify MBH spins (Berti & Volonteri 2008), and to gain information on the properties of gas in an accretion disc (Derdzinski et al. 2019).

Predictions and estimates of the merger rate and the properties of merging MBHs have developed over the years, starting with analytical models (Haehnelt 1994; Jaffe & Backer 2003; Wyithe & Loeb 2003), then with semi-analytical models (Sesana et al. 2004, 2011; Tanaka & Haiman 2009; Barausse 2012; Ricarte & Natarajan 2018), and more recently with hydrodynamical cosmological simulations (Salcido et al. 2016; Kelley, Blecha & Hernquist 2017; Katz et al. 2020). Analytical models can only study a population of MBHs without information on single sources. Semi-analytical models improve on that, but they lack spatial information and use simplified analytical functions. However, both approaches have high flexibility and small computational costs, allowing for parametric studies. Vice-versa, cosmological hydrodynamical simulations naturally include spatial information of galaxies and can reach a high level of complexity, but at high computational costs.

The landscape of cosmological hydrodynamical simulations currently comprises low-resolution large-volume simulations with many massive galaxies, but which are unable to resolve dwarf galaxies, or high-resolution small-volume simulations with few galaxies, but which are capable of probing the dwarf regime. The former simulations are well adapted to studying the high-mass end of the merging MBH population, $10^7 - 10^8 M_\odot$ and higher, i.e. the binaries that are relevant for PTA experiments (Sesana, Vecchio & Volonteri 2009; Kelley et al. 2017), but they cannot be used to study the full LISA MBH population, $10^4 - 10^7 M_\odot$, since such MBHs are hosted in galaxies unresolved in these simulations. The latter type of simulations can resolve the merging history of the galaxies hosting LISA MBHs, but at the expense of smaller statistical significance.

More specifically, most large-scale hydrodynamical cosmological simulations have relatively low-mass resolution, typically resolving galaxies with mass $> 10^9 M_\odot$ (Dubois et al. 2014b; Vogelsberger et al. 2014; Schaye et al. 2015; Pillepich et al. 2018; Davé et al. 2019). They cannot resolve galaxies where low-mass MBHs are expected to reside, or they implant MBH seeds only in high-mass haloes, thus missing the early merger history (Genel et al. 2014; Schaye et al. 2015; Steinborn et al. 2016). The low spatial resolution of ~ 1 kpc makes it challenging to account for the MBH dynamics. Simulations with intermediate volumes and mass resolutions have started to uncover the population of merging MBHs in lower mass haloes (Tremmel et al. 2018). Alternatively, small-scale zooms can resolve the evolution of galaxy pairs in small groups with high

spatial resolution (Khan et al. 2016), but do not provide statistical samples.

In this paper, we analyse two simulations: one, HORIZON-AGN (Dubois et al. 2014b) is a low-resolution large-volume cosmological simulation similar to that used for previous studies by other groups (Salcido et al. 2016; Katz et al. 2020). This simulation is well adapted for studying the high-mass end of the MBH population residing in massive galaxies, and can be used to investigate MBHs in the mass and redshift of interest for PTAs. The second simulation, NEWHORIZON (Dubois et al., in preparation) is a high-resolution zoom that can resolve dwarf galaxies with 40 pc resolution so that bulges and discs can be physically resolved (Park et al. 2019), in a sufficiently large volume such that the simulation includes more than 100 galaxies with stellar mass larger than $10^9 M_\odot$ at the final redshift analysed here, $z = 0.45$. NEWHORIZON is well suited for studying LISA’s MBHs. NEWHORIZON is the first cosmological simulation of this kind used for studying the MBH merger rate in low-mass galaxies.

Even with the extremely high resolution of NEWHORIZON, corrections to the merger time-scales are necessary because in reality MBHs merge when their separation is comparable to their gravitational radius, $10^{-6} \text{pc}(M_{\text{BH}}/10^7 M_\odot)$, and cosmological simulations are unable to obtain such resolution. General relativistic simulations of black hole mergers that resolve the full space-time, conversely, are limited to evolving only a few orbits and have a computational domain of only a few hundreds of gravitational radii (see Aasi et al. 2014, for a compendium).

We analyse MBH mergers in the two simulations in the same way, explore the differences and similarities and discuss their relative advantages and disadvantages. We also connect MBH mergers to galaxy mergers, both one by one and in a statistical sense, comparing the merger rates, and the masses and mass ratios of galaxy mergers sourcing MBH mergers to the general merging population in order to assess how to infer information on MBH mergers from galaxy merger samples.

2 HORIZON-AGN AND NEWHORIZON

Both simulations analysed in this paper form part of the HORIZON simulation suite.¹ HORIZON-AGN (Dubois et al. 2014b) is a hydrodynamical cosmological simulation with a box length of 142 Mpc, and NEWHORIZON² (Dubois et al., in preparation) is a zoom-in simulation that resimulated a subsphere with a radius of 10 comoving Mpc of HORIZON-AGN at higher resolution.

The properties of the MBH population in HORIZON-AGN is in good agreement with observations of MBHs with masses $M_{\text{BH}} > 10^7 M_\odot$ (Volonteri et al. 2016), and therefore this is the type of simulation that can be used to probe the MBH mergers of interest for PTA. The most massive MBHs in NEWHORIZON have mass $\sim 10^7 M_\odot$ instead therefore this simulation probes the MBHs of interest for LISA. A full analysis of the MBH population in NEWHORIZON will be presented in Beckmann et al. (in preparation), but we note that it produces an active galactic nucleus (AGN) luminosity function in good agreement with the faint end of the observed one at $z = 0.5-3$.

Both simulations are based on a standard Λ CDM cosmology consistent with WMAP-7 data (Komatsu et al. 2011), with total matter density $\Omega_m = 0.272$, dark energy density $\Omega_\Lambda = 0.728$, baryon density $\Omega_b = 0.045$, a Hubble constant of $H_0 = 70.4 \text{ km s}^{-1} \text{ Mpc}^{-1}$,

¹<https://www.horizon-simulation.org/>

²<https://new.horizon-simulation.org/>

and an amplitude of the matter power spectrum and power-law index of the primordial power spectrum of $\sigma_8 = 0.81$ and $n_s = 0.967$, respectively. The two simulations rely on the same sampling of the initial phases (white noise) generated at the common spatial resolution 4096^3 (NEWHORIZON) and then downgraded at lower resolution 1024^3 (HORIZON-AGN).

The simulations were run with the adaptive mesh refinement code RAMSES (Teyssier 2002), using a second-order unsplit Godunov scheme to solve the Euler equations, and an HLLC Riemann solver with a MinMod Total Variation Diminishing scheme to reconstruct interpolated variables. Both simulations have adaptive mesh refinement performed in a quasi-Lagrangian manner if the total mass in a cell becomes greater than 8 times the initial mass resolution. In NEWHORIZON, we have also added a Jeans refinement criterion to refine the mesh if a cell has a length shorter than one Jeans length where the gas number density is larger than 5 H cm^{-3} . Collisionless particles (dark matter and star particles) are evolved using a particle mesh solver with a cloud-in-cell interpolation.

The two simulations have been run with different subgrid physics, and therefore they cannot be combined to have a ‘full’ merger rate: when discussing results we refrain from merging the results of the simulations, and we keep them separate. We summarize below the main characteristics of the implementations in the two simulations and we refer to Dubois et al. (2014b) and Park et al. (2019) for more details.

2.1 Horizon-AGN

HORIZON-AGN simulates a large volume, $(142 \text{ comoving Mpc})^3$, at a relatively low spatial and mass resolution: refinement is permitted down to $\Delta x = 1 \text{ kpc}$, the dark matter particle mass is $8 \times 10^7 M_\odot$, the stellar particle mass is $2 \times 10^6 M_\odot$, and the MBH seed mass is $10^5 M_\odot$.

Gas cooling is modelled down to 10^4 K with curves from Sutherland & Dopita (1993). Heating from a uniform UV background takes place after redshift $z_{\text{reion}} = 10$ following Haardt & Madau (1996). The gas follows an equation of state for an ideal monoatomic gas with an adiabatic index of $\gamma_{\text{ad}} = 5/3$.

Star formation is modelled with a Schmidt relation adopting a constant star formation efficiency $\epsilon_* = 0.02$ (Kennicutt 1998; Krumholz & Tan 2007) in regions which exceed a gas hydrogen number density threshold of $n_0 = 0.1 \text{ H cm}^{-3}$ following a Poisson random process (Rasera & Teyssier 2006; Dubois & Teyssier 2008). Mechanical energy injection from Type Ia SNe, Type II SNe, and stellar winds is included assuming a Salpeter (1955) initial mass function with cut-offs at 0.1 and $100 M_\odot$.

MBHs are created in cells where the gas density is larger than n_0 , and where the gas velocity dispersion is larger than 100 km s^{-1} ; an exclusion radius of 50 comoving kpc is imposed to avoid formation of multiple MBHs in the same galaxy. MBH formation is stopped at $z = 1.5$. The accretion rate follows a Bondi–Hoyle–Lyttleton (BHL) rate modified by a factor $\alpha = (n/n_0)^2$ when $n > n_0$ and $\alpha = 1$ otherwise (Booth & Schaye 2009) in order to account for the inability to capture the multiphase nature of the interstellar gas. The effective accretion rate on to MBHs is capped at the Eddington luminosity with a radiative efficiency of 0.1. For luminosities above 1 per cent of the Eddington luminosity, 15 per cent of the MBH emitted luminosity is isotropically coupled to the gas within $4\Delta x$ as thermal energy.

At lower luminosities feedback takes a mechanical form, with 100 per cent of the power injected into a bipolar outflow with a velocity of 10^4 km s^{-1} , injected in a cylinder with radius Δx and height $2\Delta x$.

To avoid spurious motions of MBHs due to finite force resolution effects, we adopt an explicit drag force of the gas on to the MBH (Dubois et al. 2012) with the same boost factor α used for accretion. This gas dynamical friction is expressed as $F_{\text{DF}} = f_{\text{gas}} 4\pi \alpha \rho_{\text{gas}} (GM_{\text{BH}}/\bar{c}_s)^2$, where ρ_{gas} is the mass-weighted mean gas density within a sphere of radius $4\Delta x$ and f_{gas} is a factor function of the mach number $\mathcal{M} = \bar{u}/\bar{c}_s$, which accounts for the extension and shape of the wake (Ostriker 1999) and takes a value between 0 and 2 for an assumed Coulomb logarithm of 3 (Chapon, Mayer & Teyssier 2013). Including this drag force allows us to avoid pinning MBHs to galaxy centres, i.e. constantly repositioning them at the minimum of the local potential, which causes unnatural dynamics (Tremmel et al. 2015). See Dubois et al. (2013) for additional details.

2.2 NewHorizon

NEWHORIZON is a smaller and higher resolution volume: it resimulates an ‘average’ density sphere with a radius 10 comoving Mpc of Horizon-AGN, focusing on field galaxies. The most massive halo at $z = 0.45$ is $5.9 \times 10^{12} M_\odot$. The dark matter mass resolution in the zoomed region is $M_{\text{DM,hr}} = 1.2 \times 10^6 M_\odot$, stellar mass resolution is $10^4 M_\odot$, $\Delta x = 40 \text{ pc}$, and the MBH seed mass $10^4 M_\odot$. In the high-resolution region, a passive refinement scalar is injected, with a value of 1 within that region, and we only allow for refinement when the value of this scalar is above³ a value of 0.01. We use this passive scalar also to measure the refined volume, which collapses somewhat from the initial volume of $\sim 4000 \text{ Mpc}^3$ under the effect of gravity.

Gas cooling is modelled with rates tabulated by Sutherland & Dopita (1993) above 10^4 K and those from Dalgarno & McCray (1972) below 10^4 K . The uniform UV background is as in Horizon-AGN, except that we include self-shielding where the gas density is larger than $n_{\text{shield}} = 0.01 \text{ H cm}^{-3}$, i.e. UV photoheating is reduced by a factor $\exp(-n/n_{\text{shield}})$.

Star formation follows a Schmidt law, but with a density threshold of $n_0 = 10 \text{ H cm}^{-3}$, and with a varying star formation efficiency that depends on the local turbulent Mach number and Jeans length (see e.g. Trebitsch et al. 2018). The initial mass function differs from Horizon-AGN, adopting a Chabrier functional form (Chabrier 2005), with cut-offs at 0.1 and $150 M_\odot$. We include the mechanical SN feedback model from Kimm et al. (2015), which models the energy and momentum conserving phases of the explosion separately. This SN feedback is more effective than the purely kinetic formulation used in Horizon-AGN (Kimm et al. 2015).

Black holes form in cells where both the gas and stellar densities are above the threshold for star formation and the stellar velocity dispersion is larger than 20 km s^{-1} , again with an exclusion radius of 50 comoving kpc. An explicit drag force of the gas on to MBHs is implemented, with the same boost as in Horizon-AGN. Since NEWHORIZON has sufficient spatial resolution to model some of the multiphase nature of the gas, accretion is modelled via a non-boosted BHL rate ($\alpha = 1$), capped at the Eddington luminosity.

Spin evolution via gas accretion and MBH–MBH mergers are followed explicitly in NEWHORIZON, using the implementation described in Dubois et al. (2014a). For MBH–MBH mergers, we adopt for the final spin a fit motivated by general relativistic simulations

³The initial pure Lagrangian volume changes size and shape over time and the Eulerian volume gets polluted by low-resolution dark matter particles over time.

(Rezzolla et al. 2008). For accretion, the direction of the angular momentum of the accreted gas is used to decide whether the accreted gas feeds an aligned or misaligned disc (King et al. 2005), respectively, spinning up or down the MBH (Bardeen 1970) for accretion above 1 per cent of the Eddington luminosity. At lower luminosities, the MBH spin-up (down) rate is motivated by jets tapping energy from MBH spins (Blandford & Znajek 1977; Moderski & Sikora 1996) and follows the results from McKinney, Tchekhovskoy & Blandford (2012), where we fit a fourth-order polynomial to their sampled values (from their table 7, AaN100 runs, where a is the value of the MBH spin). The radiative efficiency is calculated individually for each MBH based on its spin, thus the Eddington mass accretion rate will vary as an MBH spin evolves, and it is reduced linearly with the Eddington ratio for MBHs below 1 per cent of the Eddington luminosity following Benson & Babul (2009). AGN feedback also depends on spin, being 15 per cent of the spin-dependent emitted power for the thermal feedback, injected within a sphere of radius Δx , and following the results of magnetically choked accretion discs of McKinney et al. (2012, from their table 5 for AaN100 runs). The bipolar outflows are modelled as in Horizon-AGN. We also enforce the refinement within a region of radius $4\Delta x$ around the MBH at the maximum allowed level of refinement.

2.3 Halo and galaxy catalogues

In HORIZON-AGN, we identify dark matter haloes and galaxies with the AdaptaHOP halo finder (Aubert, Pichon & Colombi 2004). The density field used in AdaptaHOP is smoothed over 20 particles. In HORIZON-AGN, we fix the density threshold at 178 times the average total matter density and require 50 dark matter particles for identification for both dark matter haloes and 50 star particles for galaxies. In NEWHORIZON, only haloes with average density larger than 80 times the critical density are considered, and the minimum number of particles per halo is 100. For galaxies in NEWHORIZON, we select them using the HOP finder, requiring at least 50 star particles for a galaxy. The difference with AdaptaHOP is that substructures are not extracted from the main component. This is necessary as the high resolution achieved in the NEWHORIZON galaxies allows the formation of dense star-forming clumps, which will otherwise be removed with AdaptaHOP.

NEWHORIZON is a zoom simulation embedded in a larger cosmological volume filled with lower resolution dark matter particles, we need to consider only ‘pure’ haloes, devoid of low-resolution dark matter particles, and the galaxies embedded in these haloes. Low-resolution particles are more massive than high-resolution particles, therefore the presence of low- and high-resolution particles in the same halo would induce numerical issues; using only pure galaxies/haloes the dynamics of the galaxies under examination is robust. The purity criterion only affects haloes at the edge of the refined volume, where lower resolution particles from outside can get mixed into the high-resolution region. At the final redshift of $z = 0.45$, this gives 762 uncontaminated galaxies with stellar mass larger than $5 \times 10^5 M_\odot$ and 238, 87, and 17 with masses larger than 10^8 , 10^9 , and $10^{10} M_\odot$, respectively.

In Horizon-AGN, we obtain the centre of haloes and galaxies using the shrinking sphere approach proposed by Power et al. (2003) to get the correct halo centre. In NEWHORIZON, we use the shrinking sphere approach for haloes and for galaxies with a reduction factor of the radius of, respectively, 10 and 30 per cent at each shrinking step, and with a stopping search radius of, respectively, 0.5 and 1 kpc. This rather large value for galaxies (with respect to their typical size) in NEWHORIZON allows us to avoid converging towards dense and

massive but randomly located clumps, and provides a qualitatively better centring over the total stellar distribution. Despite this, defining the galaxy ‘centre’ for low-mass and high-redshift galaxies remains challenging.

3 METHODS

3.1 Selecting black hole mergers

Using the information in the simulation and post-processing techniques, we create catalogues of MBH mergers. To select merging MBHs, we use the information on all MBHs at each synchronized (coarse) time-step of the corresponding simulation, every ~ 0.5 Myr in NEWHORIZON and ~ 0.6 – 0.7 Myr in Horizon-AGN. Only MBH information is available at each coarse time-step, as galaxy and halo information is only available at full outputs that are saved much less frequently.

A pair of MBHs is merged *in the simulation* when an MBH present at a given time disappears in the succeeding time-step; the companion MBH is located by searching for the MBH that was closest to the vanished one, keeping in mind that the simulation merges MBHs when they are separated by $\leq 4\Delta x$, corresponding to 4 kpc for HORIZON-AGN and 160 pc for NEWHORIZON, and they are energetically bound in vacuum. These separations, especially for HORIZON-AGN, are much larger than those where MBHs effectively merge in normal conditions and in Section 3.2 we discuss how we include additional time-scales to account for this. We refer to these as ‘numerical mergers’ and the initial lists contains 542 MBH mergers for NEWHORIZON and 85 397 for HORIZON-AGN. After a numerical merger, the remnant acquires the ID of the most massive MBH in the pair. This is the starting general catalogue for HORIZON-AGN (‘all’) and we use the subscript ‘in’ for quantities (redshift, cosmic time, MBH masses, accretion rates, galaxy masses) at the initial time of the numerical merger.

For NEWHORIZON, which is a zoom simulation, this initial list also includes MBHs that are located in polluted haloes, i.e. haloes that contain low-resolution dark matter particles and whose evolution is therefore untrustworthy. The first task is therefore to remove MBHs in polluted haloes from our sample. This is performed by spatially matching MBHs with galaxies in unpolluted haloes. For each MBH pair, we request that the primary is located within $\max(10R_{\text{eff}}, 4\Delta x)$ from a galaxy in an unpolluted halo, where R_{eff} is the geometric mean of the projected half-mass radius over the three Cartesian axes. A galaxy is associated with a halo if the galaxy centre is within 10 per cent of the virial radius of the dark matter halo. The initial list of 542 numerical mergers is thus reduced to 385. For NEWHORIZON, we consider this to be the starting general catalogue (‘all’).

In both NEWHORIZON and Horizon-AGN, MBHs are not pinned in the centre of galaxies and haloes, so an additional concern is removing possible ‘spurious’ numerical mergers. In a realistic situation, it is unlikely that MBHs merge far from the centre of the host galaxy (Merritt 2001). This is because MBHs have a small impact parameter for binding to another MBH: they must pass within each other’s sphere of influence. In the simulation, for slowly moving MBHs the impact parameter is instead $4\Delta x$, much larger than the physical impact parameter under realistic conditions. The energy condition ensures that in vacuum the MBHs would bind, but not that they would merge, since much energy has to be extracted from the binary before they are sufficiently close that gravitational waves become effective in driving the MBHs to coalescence. Processes that extract energy from the orbit of an MBH or from a binary,

first dynamical friction, then hardening by scattering off single stars and torques from circumbinary disc, are far more effective in higher surrounding stellar and/or gas densities. For off-centre MBHs and binaries, the orbital evolution is therefore slower than for centrally located MBHs. This is particularly important for NEWHORIZON, where the low initial MBH seed mass can make dynamics erratic (Pfister et al. 2019), while for HORIZON-AGN the main worry, as we will see below, is the correction for dynamical delays, even in the case of ‘central’ mergers.

To identify possible spurious numerical mergers, we cross-correlate MBHs with galaxies, and we select pairs where the MBHs are within $\max(2R_{\text{eff}}, 4\Delta x)$ (‘*sel*’). In NEWHORIZON, galaxy properties are output every ~ 15 Myr, while in HORIZON-AGN every ~ 150 Myr. In NEWHORIZON, we consider the galaxy output closest in time to the numerical merger. Given the sparsity of HORIZON-AGN outputs, galaxies and MBHs can have moved considerably between the two outputs surrounding the time of the MBH merger; for this simulation we apply the criterion $\max(2R_{\text{eff}}, 4\Delta x)$ on the primary MBH at its position in the galaxy outputs before and after the merger.

In NEWHORIZON, this catalogue contains 314 MBHs, and in HORIZON-AGN it contains 64 505 MBHs. Numerical noise in MBH dynamics arises when the ratio of MBH mass to stellar particle mass is too small, which results in a lack of dynamical friction from particles (Tremmel et al. 2015; Pfister et al. 2019) that would otherwise offset this noise. This spurious noise can keep MBHs away from galaxy centres, and, hence, we define ‘centre’ very generously and we consider *sel* as the reference sample. We discuss alternative choices in Appendix C, noting that choices can make a significant difference – up to an order of magnitude – in the final results. The merger rate is still likely to be considered a lower limit. We apply the same selection criterion of $\max(2R_{\text{eff}}, 4\Delta x)$ in matching MBHs to galaxies at all subsequent steps of the post-processing described below.

3.2 Dynamical evolution

As discussed, the simulations numerically ‘merge’ MBHs when their separation is much larger than the typical separation, of order of a milliparsec, where emission of gravitational waves becomes effective and brings the binary to coalescence in less than a Hubble time (Colpi 2014). The catalogues have to be post-processed to obtain more realistic merging time-scales and merger rates. Various approaches for adding merger time-scales in semi-analytical models (Volonteri, Haardt & Madau 2003; Barausse 2012; Bonetti et al. 2019) and in numerical simulations by post-processing have been proposed (Kelley et al. 2017; Krolik et al. 2019; Katz et al. 2020; Sayeb et al. 2020). Any correction will necessarily be more arbitrary for low-resolution simulations, since the available information must be extrapolated over a much larger parameter space.

3.2.1 Dynamical friction

The simulation includes a drag force from surrounding gas calculated on the fly, but it only operates above the resolution limit. For numerically merged MBHs, the drag would act on the ‘merged’ MBH and not on each MBH in the pair individually. This part of the dynamical decay requires additional dynamical friction in post-processing. A typical approach is to include the dynamical friction time-scale for the secondary MBH to infall to the galaxy centre, where the primary MBH is assumed to sit at rest. In NEWHORIZON, most MBHs are

not growing much until they reside in galaxies with typical stellar mass above $10^{10} M_{\odot}$ due to efficient feedback from SNe removing gas from the innermost regions of galaxies (Dubois et al. 2015; Bower et al. 2017; Habouzit, Volonteri & Dubois 2017). Therefore, for NEWHORIZON, since many MBHs are not growing much, very often the two merging MBHs have very similar masses and there is no clear distinction between ‘primary’ and ‘secondary’. We can therefore imagine that both MBHs have to find the centre of the galaxy.

We here take a relatively simple approach. We first estimate dynamical friction evolution as in Krolik et al. (2019) by computing the frictional time-scale for a massive object in an isothermal sphere (Binney & Tremaine 2008):

$$t_{\text{df}} = 0.67 \text{ Gyr} \left(\frac{a}{4 \text{ kpc}} \right)^2 \left(\frac{\sigma}{100 \text{ km s}^{-1}} \right) \left(\frac{M_{\text{BH}}}{10^8 M_{\odot}} \right)^{-1} \frac{1}{\Lambda}, \quad (1)$$

where M_{BH} is the black hole mass, σ the central stellar velocity dispersion approximated as $(0.25 GM_{\text{gal}}/R_{\text{eff}})^{1/2}$ and $\Lambda = \ln(1 + M_{\text{gal}}/M_{\text{BH}})$, with M_{gal} the total stellar mass of the galaxy hosting the MBH at the output closest in time. In equation (1), a is the distance of the MBH from the galaxy centre, calculated in NEWHORIZON at the output closest in time to the numerical merger. In HORIZON-AGN, where galaxy outputs are much sparser, we first interpolate linearly the position of the host galaxy within the box from the output before the merger and the output after the merger to the time of the numerical merger and then calculate the distance between each of the MBHs and the galaxy centre at that time. In the normalization of t_{df} , we included a factor 0.3 to account for typical orbits being non-circular (Taffoni et al. 2003). We calculate the sinking time for M_1 , the most massive MBH in the pair, and M_2 , the least massive, and take the longest of the two, which is normally associated with M_2 (in HORIZON-AGN as in NEWHORIZON, the masses are usually similar except in the most massive galaxies). The difficulty in matching MBHs to galaxies due to the discrete temporal sampling of the galaxy outputs induces scatter in the estimates of the time-scale, which can be either underestimated or overestimated.

We have not included additional corrections for stellar mass bound to the MBH, which would speed up the orbital decay (Taffoni et al. 2003; Callegari et al. 2009; Van Wassenhove et al. 2012), nor corrections for the increase in mass of the MBHs due to accretion and for the increase in the stellar mass and velocity dispersion of the galaxy, during this time. In Appendix A, we present an analysis of the impact of our assumptions on the estimate of the dynamical friction time-scale, for the last two effects mentioned above. We briefly note here that black hole growth does not seem significant and that the potential impact of a rising velocity dispersion is of decreasing the dynamical friction time-scale.

3.2.2 Binary evolution

After the dynamical friction time-scale has elapsed, we look in the MBH outputs for the ID of the remnant MBH at $t_{\text{in}} + t_{\text{df}}$, where t_{in} is the time of the numerical merger. If at $t_{\text{in}} + t_{\text{df}}$ the MBH descendant of the numerical merger is within $\max(2R_{\text{eff}}, 4\Delta x)$ of a galaxy, we calculate additional delay time-scales. If t_{df} is very long, typically for low-mass MBHs at large distances from galaxy centres, the MBH may have already experienced another numerical merger as secondary MBH. We take the merging product between the original MBH and the new primary MBH and proceed as in the previous case.

We assume that after t_{df} has elapsed, the MBHs form a close binary with total mass M_{12} equal to the mass of the MBH in the simulation at $t_{\text{in}} + t_{\text{df}}$, thus including the mass accreted during the dynamical friction phase, and mass ratio q equal to that of M_2/M_1 at the time of the numerical merger. We consider the MBH and host galaxy properties at $t_{\text{in}} + t_{\text{df}}$ to calculate ensuing binary evolution time-scales. The main dynamical drivers are either hardening by individual scattering off stars or viscous interactions in a circumbinary disc.⁴

We calculate the two time-scales following Sesana & Khan (2015) for the stellar hardening and Dotti, Merloni & Montuori (2015) for gaseous torques between the MBH binary and the circumbinary disc. We calculate the former as

$$t_{\text{bin,h}} = 15.18 \text{ Gyr} \left(\frac{\sigma_{\text{inf}}}{\text{km s}^{-1}} \right) \left(\frac{\rho_{\text{inf}}}{\text{M}_{\odot} \text{pc}^{-3}} \right)^{-1} \left(\frac{a_{\text{gw}}}{10^{-3} \text{ pc}} \right)^{-1}, \quad (2)$$

where σ_{inf} and ρ_{inf} are the velocity dispersion and stellar density at the sphere of influence, defined as the sphere containing twice the binary mass in stars, and a_{gw} is the separation at which the binary spends most time, i.e. where the effectiveness of hardening and gravitational wave emission is the lowest:

$$a_{\text{gw}} = 2.64 \times 10^{-2} \text{ pc} \times \left[\frac{\sigma_{\text{inf}}}{\text{km s}^{-1}} \frac{\text{M}_{\odot} \text{pc}^{-3}}{\rho_{\text{inf}}} \frac{15}{H} \left(\frac{M_1 M_2 M_{12}}{2 \times 10^{24} \text{ M}_{\odot}^3} \right) \right]^{1/5}, \quad (3)$$

where $M_{12} = M_1 + M_2 = M_{\text{BH}}$ is the mass of the binary and we adopt $H = 15$ as a reference value (Sesana & Khan 2015), although in some environments H can be non-constant (Ogiya et al. 2019).

To estimate σ_{inf} and ρ_{inf} , we assume that the density profile within R_{eff} is a power-law $\rho \propto r^{-\gamma}$ with index $\gamma = 2$ (See Appendix B for a comparison with $\gamma = 1$), with a total mass within R_{eff} equal to 1/2 the galaxy stellar mass. Given the power-law profile and M_{BH} , one can calculate the radius r_{inf} containing twice the binary mass in stars, the density at that radius, ρ_{inf} , and σ_{inf} as $(GM_{\text{BH}}/r_{\text{inf}})^{1/2}$. Neither simulation can resolve nuclear star clusters, in the presence of which $t_{\text{bin,h}}$ becomes much shorter (Arca-Sedda & Gualandris 2018; Biava et al. 2019; Ogiya et al. 2019), therefore for galaxies with mass $\sim 10^8 - 10^{10} \text{ M}_{\odot}$ where the nucleation fraction is high (Sánchez-Janssen et al. 2019), the time-scales we derive are likely upper limits.

For the residence time in the case of evolution in a circumbinary disc, we use

$$t_{\text{bin,d}} = 1.5 \times 10^{-2} \epsilon_{0.1} f_{\text{Edd}}^{-1} \frac{q}{(1+q)^2} \ln \left(\frac{a_i}{a_c} \right) \text{ Gyr}, \quad (4)$$

where $q \equiv M_2/M_1 \leq 1$ is the MBH binary mass ratio, $\epsilon_{0.1}$ is the radiative efficiency normalized to 0.1, and f_{Edd} is the luminosity in units of the Eddington luminosity at $t_{\text{in}} + t_{\text{df}}$. We follow Dotti et al. (2015) in selecting $a_i = GM_{12}/2\sigma^2$ and $a_c = 1.9 \times 10^{-3} \text{ pc} (M_{12}/10^8 \text{ M}_{\odot})^{3/4}$, respectively, as the separation when the MBHs form a binary and the separation at which emission of gravitational waves brings the MBHs to coalescence in $\sim 10^4$ yr, to obtain

$$\frac{a_i}{a_c} = \left[1.14 \times 10^4 \left(\frac{M_{12}}{10^8 \text{ M}_{\odot}} \right)^{1/4} \left(\frac{\sigma}{100 \text{ km s}^{-1}} \right)^2 \right]. \quad (5)$$

⁴Various groups find that torques in circumbinary discs cause the binary to outspiral rather than inspiral, especially for binary mass ratios close to unity (Miranda, Muñoz & Lai 2017; Duffell et al. 2019; Moody, Shi & Stone 2019; Muñoz, Miranda & Lai 2019). We do not take this into account, but we note that in most cases the dynamical evolution of the binaries in our simulation is dominated by stellar scattering for sufficiently dense stellar structures.

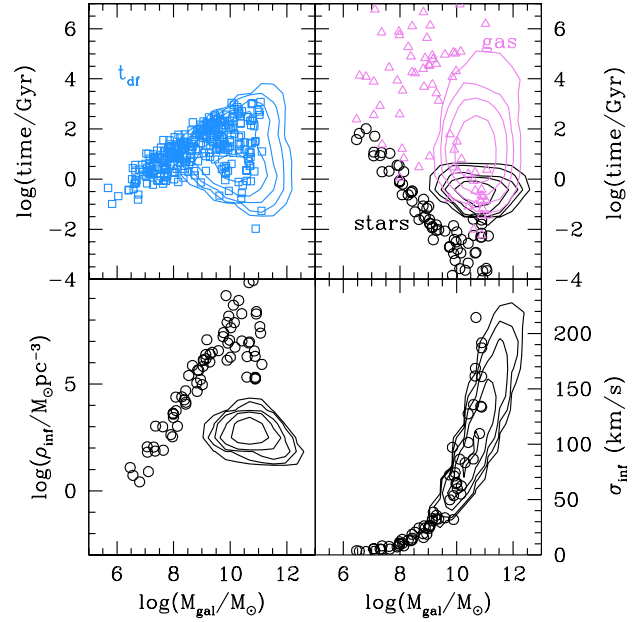


Figure 1. Top: Delay time-scales for HORIZON-AGN (contours) and NEWHORIZON (markers) as a function of the stellar mass of the host galaxy, for catalogue ‘sel’. We show the dynamical friction time-scale t_{df} (blue), $t_{\text{bin,d}}$ for gas-driven inspiral (purple) and $t_{\text{bin,h}}$ for stellar hardening (black). Bottom: Velocity dispersion and stellar density at the radius of the sphere of influence for HORIZON-AGN (contours) and NEWHORIZON (circles) as a function of the stellar mass of the host galaxy, for catalogue ‘sel’. If MBHs are surrounded by steep stellar density cusps, then the hardening time-scales are generally shorter than one Gyr, and shorter than the time-scale for migration in a gaseous disc: the bottleneck for dynamical evolution is the dynamical friction phase.

Since mass accretion on to MBHs is highly variable, we average f_{Edd} of the binary, i.e. of numerically merged M_{BH} , over 50 Myr before the time when the binary forms. Recall that at this point, $t_{\text{in}} + t_{\text{df}}$, we have only one MBH which we consider the binary. We further assume that the evolutionary time-scale is the minimum between these two: $t_{\text{bin}} = \min(t_{\text{bin,h}}, t_{\text{bin,d}})$ and we define $t_{\text{fin}} = t_{\text{in}} + t_{\text{df}} + t_{\text{bin}}$.

Our approach does not include triple MBH interactions, which can lead to fast MBH coalescences when they excite eccentricity through the Kozai–Lidov mechanism and through chaotic dynamics (Bonetti et al. 2018; Ryu et al. 2018). Binary evolution time-scales could therefore be shorter than calculated here.

In Fig. 1, we show the resulting time-scales as a function of the stellar mass of the host galaxy. In general, stellar hardening in galaxies with high central stellar densities leads to the fastest evolution, with time-scales shorter than gas-driven evolution even in high-redshift galaxies. The binaries with very long $t_{\text{bin,d}}$ are those with ‘starving’ MBHs that have very low f_{Edd} . From equation (4), with all other properties fixed, $t_{\text{bin,d}}$ is minimum for an MBH accreting at the Eddington rate, and it gets very long when f_{Edd} is very low: the gas that is available for MBH accretion and for fuelling a circumbinary disc comes from the same supply in the environment of the MBH: when MBHs are starved, the gas-driven migration of an MBH binary is also stalled (Dotti et al. 2015). Binary evolution in circumbinary discs is therefore lengthened by the same processes that stunts MBH growth, for instance supernova explosions in dwarf galaxies (Dubois et al. 2015).

Stellar hardening is less effective in HORIZON-AGN for both numerical and physical reasons. Numerically, the lower spatial and mass resolution in HORIZON-AGN means that the central stellar densities are lower and therefore the time-scales longer. Physically, for the most massive galaxies, the central density is generally lower than for less massive counterparts (Faber et al. 1997), and it has been argued that this density decrease is caused by the scouring during the hardening of MBH binaries (Faber et al. 1997; Milosavljević & Merritt 2001) and AGN feedback (Martizzi et al. 2012). While the former effect is not present in the simulation, and AGN feedback does flatten the galaxy density profiles of massive galaxies in HORIZON-AGN (Peirani et al. 2017).

In NEWHORIZON, MBHs are lighter at a given galaxy stellar mass and furthermore galaxies are more compact, i.e. they have a smaller R_{eff} at a given stellar mass, therefore ρ_{inf} is higher and this leads to shorter hardening time-scales.

3.3 Connecting galaxy and black hole mergers

We construct the history of all galaxies, from their birth to the time the simulation ends ($z = 0$ for HORIZON-AGN and $z = 0.45$ for NEWHORIZON), and associate numerical MBH mergers to the galaxy mergers from which they originate.

The history of each galaxy is contained in the simulation's merger trees: we use TREEMAKER (Tweed et al. 2009) on all galaxies for HORIZON-AGN and at the final redshift for NEWHORIZON. We define the main descendant of a galaxy as the one that shares the most mass in the following output. Two galaxies are defined as merged when their main descendant is the same, and this also defines the time of the galaxy merger.

To associate MBH and galaxy mergers, for each MBH merger we select the first output where each of the MBHs in the binary can be associated with a galaxy using a threshold of $2R_{\text{eff}}$ to search for an MBH in a galaxy. We then search in the merger tree to identify a galaxy merger that involves descendants of the initial galaxies, and check that the two original MBHs were hosted in the merging galaxies. The match MBH–galaxy at the time of the galaxy merger uses a threshold of $2R_{\text{eff}}$ for HORIZON-AGN, but we allow the search out to $10R_{\text{eff}}$ of galaxies in unpolluted haloes in NEWHORIZON, with in practice 90 per cent of matches having distances less than $4.25R_{\text{eff}}$. The reason is that, close to a merger, the galaxy centre is not a well-defined quantity because of morphological disturbances, and this is more evident in high-resolution simulations. With this procedure, for most numerical MBH mergers we identify a galaxy merger for which we know the redshift and the properties of the merging galaxies.

4 RESULTS

4.1 Black hole mergers across galaxy populations and black hole masses

HORIZON-AGN and NEWHORIZON are simulations with very different characteristics: HORIZON-AGN simulates a large volume at low spatial and mass resolution, while NEWHORIZON simulates a relatively small average volume at high spatial and mass resolution. HORIZON-AGN is therefore unable to correctly resolve the low-mass galaxies hosting the low-mass MBHs that LISA can detect: the sweet spot for LISA's sensitivity is at about $10^5 - 10^6 M_{\odot}$. Conversely, NEWHORIZON does not contain any massive galaxies hosting MBHs massive enough to contribute to the PTA signal, which is dominated by MBHs with mass $> 10^8 M_{\odot}$ (Sesana, Vecchio & Colacino 2008). This is exemplified in Fig. 2 where we show the distribution of the

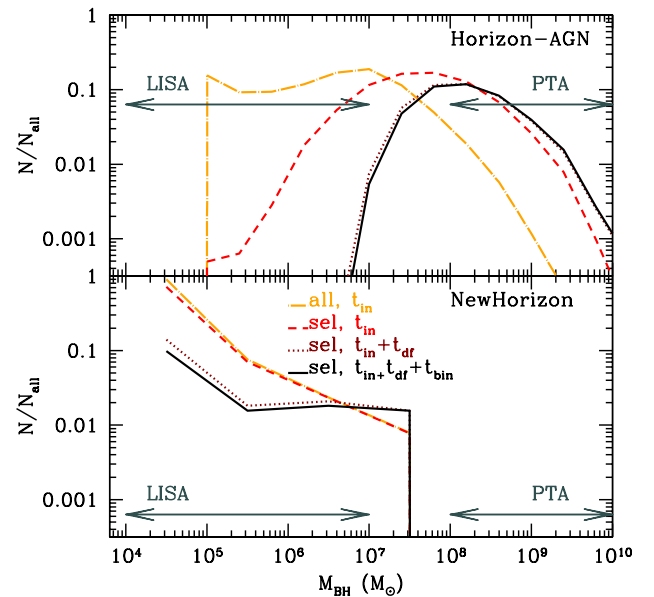


Figure 2. Mass of the primary MBH at the time of the numerical merger (t_{in}), after t_{df} and after $t_{\text{df}} + t_{\text{bin}}$ for HORIZON-AGN (top) and NEWHORIZON (bottom). We show here the mergers from catalogues *all* and *sel*. Each histogram is normalized to the number of MBHs in catalogue *all* at t_{in} . Dynamical delays shift the distributions to higher masses. We also highlight the mass ranges accessible with LISA and PTA, showing that HORIZON-AGN and NEWHORIZON are complementary.

MBH masses in the two simulations. We note that M_2 is not followed self-consistently after the numerical merger: at any time after the numerical merger, M_{BH} is the sum of M_1 and M_2 plus any mass accreted after that time.

In HORIZON-AGN, the distribution of masses in the full (*all*) sample, shown as an orange dash–dotted curve, is relatively flat from the seed mass out to $10^7 M_{\odot}$, and drops afterwards. When we remove spurious merger events, a large fraction of low-mass MBH mergers disappear (*sel*, red dashed curve). When we look at $t_{\text{in}} + t_{\text{df}}$ (dark red dotted curve), MBHs with mass $< 10^6 M_{\odot}$ virtually disappear, while at the high-mass end there are two competing effects: on the one hand some of largest MBHs are removed from the sample, because the time between t_{in} and $z = 0$ is too short, on the other hand MBHs grow during t_{df} , extending the distribution to larger masses. Finally, we look at the mass distribution at $t_{\text{in}} + t_{\text{df}} + t_{\text{bin}}$, where we find a similar behaviour. In NEWHORIZON, we find a more limited loss of MBHs at the low-mass end because fewer spurious MBH mergers occur in the outskirts of galaxies, but the overall trends are similar.

Fig. 3 shows the relation between the masses of MBH binaries and the total stellar mass of their host galaxies at different times: the numerical merger, t_{in} , after the dynamical friction phase, $t_{\text{in}} + t_{\text{df}}$, and after the binary evolution, $t_{\text{in}} + t_{\text{df}} + t_{\text{bin}}$. The observational samples are from Reines & Volonteri (2015) and Baron & Ménard (2019). Reines & Volonteri (2015) include both quiescent galaxies with dynamically measured MBH masses, typically hosted in spheroids, and active galaxies with single-epoch MBH masses estimates using broad AGN lines (type I AGN), hosted in both spheroids and disc galaxies. Baron & Ménard (2019) propose a novel way to estimate MBH masses from narrow AGN lines (type II AGN) and apply it to AGN at $z < 0.3$.

In HORIZON-AGN at given galaxy mass, the binary masses are consistent with the masses of single MBHs in the simulation, and show the same trends as single MBHs, i.e. they reproduce well

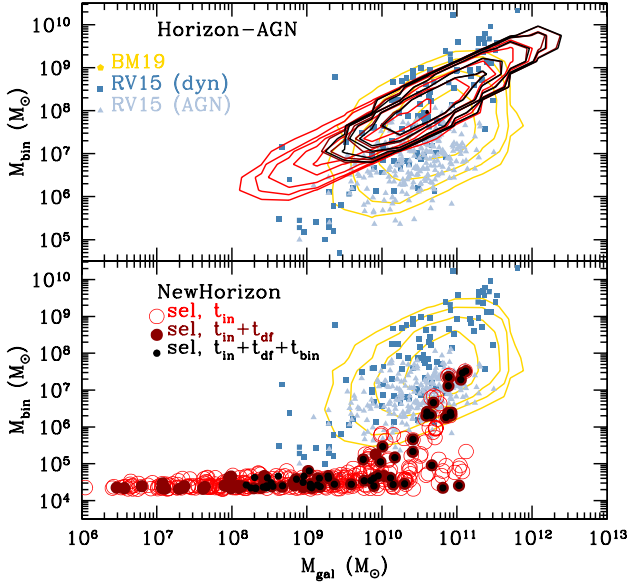


Figure 3. Mass of MBH binaries versus the stellar mass of the host galaxies at the time of the numerical merger, after t_{df} and after $t_{df} + t_{bin}$ for HORIZON-AGN (top, four logarithmically spaced contours) and NEWHORIZON (bottom, individual galaxies and MBHs are shown) for catalogue *sel*. The observational results are for single MBHs at $z \sim 0-0.3$ (Reines & Volonteri 2015; Baron & Ménard 2019).

the data at the high-mass end but they overpredict MBH masses at the low-mass end, and the distribution has a smaller scatter than in observations (see Volonteri et al. 2016 for a complete discussion). In NEWHORIZON, MBH growth is delayed by SN feedback (Dubois et al. 2015) and MBH growth picks up only in galaxies more massive than $5 \times 10^9 M_\odot$ (Dekel, Lapiner & Dubois 2019) when major gas inflows allow MBHs to grow significantly above their seed masses. MBHs in the most massive galaxies by the end of the simulation, $z = 0.45$ have masses in agreement with observational samples, but there are no MBHs with mass $> 10^6$ in galaxies with stellar mass $10^9 - 10^{10} M_\odot$. We note that this delayed MBH growth leads to a better match of the theoretical AGN luminosity function with observations in NEWHORIZON (Beckmann et al. in preparation) than in HORIZON-AGN (Volonteri et al. 2016), where it is overestimated.

The typical mass ratio of merging binaries is an important information in preparation for LISA: at the time of writing, waveforms are available for mass ratios $q \sim 1$ and $q \ll 1$, but the range $q = 10^{-1} - 10^{-6}$ falls in between those that can be studied with numerical relativity, post-Newtonian techniques, and gravitational self-force (Barack et al. 2019). Understanding if these mass ratios are statistically significant is therefore of great interest to the waveform community. Unfortunately, the mass ratio of the merging binaries is well defined only at t_{in} : at that point in the simulation M_1 and M_2 are merged and therefore subsequently the two masses cannot be followed separately although we artificially consider the two MBHs as still under dynamical evolution. We can, however, follow the total mass evolution of the binary, by tracking the numerically merged black hole.

For reference, we define the mass ratios at $t > t_{in}$ in three different ways: either we consider that the mass ratio has not changed, i.e. that M_2 has grown at the same pace as M_1 , or we consider that M_2 has not changed and all mass growth occurred on M_1 , or that there has been a coup (Van Wassenhove et al. 2014) with a swap between M_1 and M_2 so that all subsequent growth occurred on M_2 . The truth could

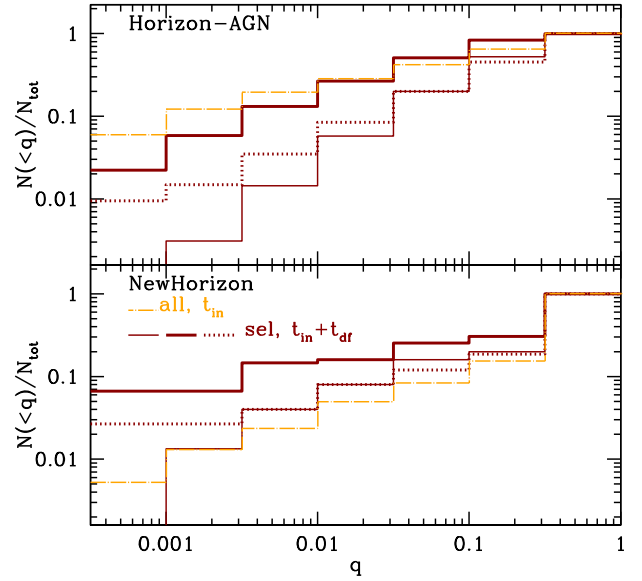


Figure 4. Cumulative distribution of mass ratios of merging MBHs. The orange dot-dashed histogram is $q = M_2/M_1$ for *all* numerical mergers, the thin solid histogram for MBHs at the time of binary formation ($t_{in} + t_{df}$) keeping the same ratio as at t_{in} , and the thick solid histogram for the same binaries, but calculating q as $q = M_2/(M_{BH}(t_{in} + t_{df}) - M_2)$, while the thick dotted histogram assumes that there has been a coup and all the mass growth occurred on M_2 , i.e. $q = M_1/(M_{BH}(t_{in} + t_{df}) - M_1)$. Each histogram is normalized to unity. Despite the difficulty in defining a mass ratio after the MBHs are numerically merged, generally the distributions are skewed towards high-mass ratio values, $q = 0.1 - 1$.

be anywhere in between and also outside this range, but we refrain from trying to speculate further, although we note that during both the dynamical friction phase and the evolution in a circumbinary disc M_2 is expected to grow faster than M_1 (Callegari et al. 2011; Noble et al. 2012; Capelo et al. 2015; Farris et al. 2015).

The mass ratios are shown in Fig. 4 for the full population at t_{in} (orange dot-dashed) and for the MBHs that form a binary at $t_{in} + t_{df}$. Adding dynamical delays shifts the HORIZON-AGN distribution to larger mass ratios, while it has the opposite effect in NEWHORIZON. In HORIZON-AGN this is due to the long dynamical friction time when M_2 is small, while in NEWHORIZON, where a large fraction of MBHs can bind, the effect is due to the growth of M_{BH} with respect to M_2 (thick lines) and to mergers with initial $q \approx 1$ involving two MBHs with $M_{BH} \approx 10^4 M_\odot$, which have long merging time-scales. In summary, a large fraction of the binaries should have mass ratio between 0.1 and 1, but a tail at $q < 0.1$ cannot be excluded.

4.2 Massive black hole merger rates

The MBH merger rate from the two simulations, defined as the rate measurable from an observer on Earth over the whole sky (Haehnelt 1994) is shown in Fig. 5. First, we show how removing ‘spurious’ mergers affects the results. We compare the numerical MBH merger rates for catalogues *all* and *sel*: in HORIZON-AGN almost 80 per cent of mergers occur outside $2R_{eff}$. This is not the case for NEWHORIZON, although in both simulations most mergers within $2R_{eff}$ actually occur between half and twice the galaxy effective radius.

We stress that NEWHORIZON provides only a lower limit to the merger rate, since it simulates an average region of the Universe and biased regions provide a significant contribution to the merger rate even taking into account for their rarity (Sesana et al. 2005). Although

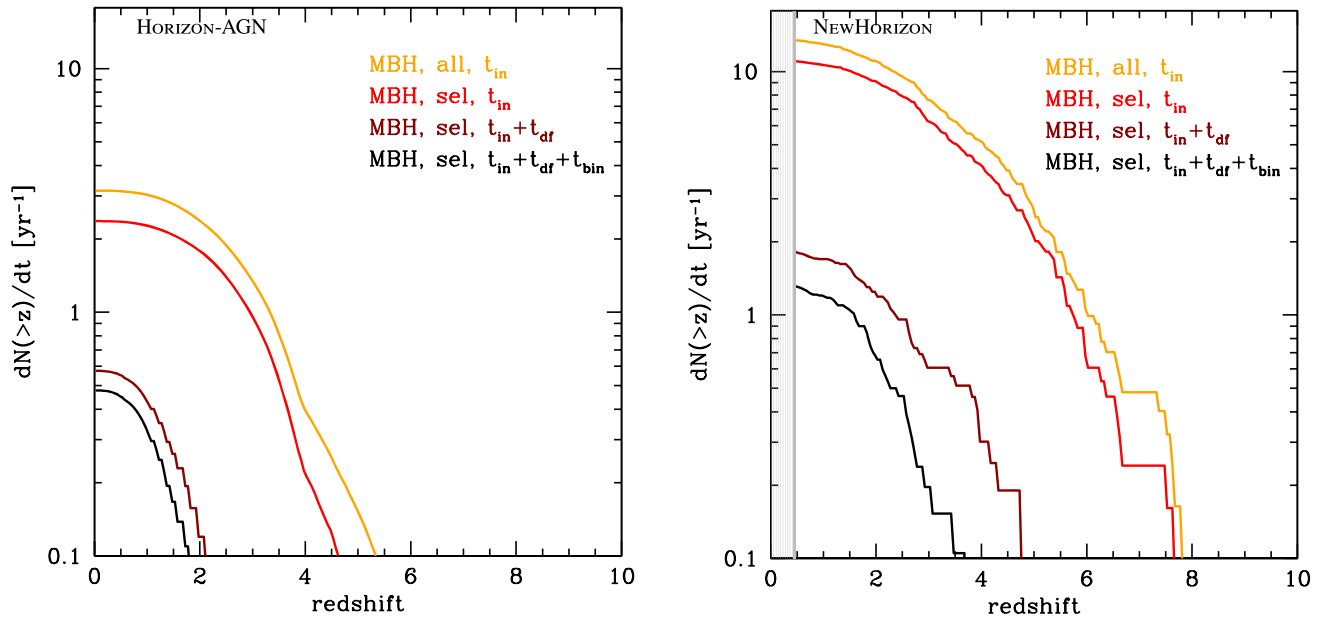


Figure 5. MBH observable cumulative merger rate in HORIZON-AGN (left-hand panel) and NEWHORIZON (right-hand panel, the grey shaded area marks the region not covered by the simulation, which ends at $z = 0.45$). Note the difference in y-axes for the two simulations. Although NEWHORIZON has a much smaller volume, the resulting merger rate is higher because the merger history of dwarf galaxies is resolved. As noted in Fig. 2, the masses of merging MBHs in the two simulations are very different: up to $10^7 M_\odot$ for NEWHORIZON and generally above to $10^7 M_\odot$ for HORIZON-AGN therefore the two merger rates are relevant for LISA and PTA, respectively. Since NEWHORIZON simulates an average volume of the Universe, it does not contain any high-bias region where mergers are enhanced, thus it gives a lower limit to the merger rate.

the simulations should not be combined since they are not self-similar in subgrid physics, the merger rate of MBHs for LISA should be higher than the sum of the rates of MBHs with mass $< 10^7 M_\odot$ from NEWHORIZON and HORIZON-AGN: NEWHORIZON does not have biased regions, and HORIZON-AGN does not resolve low-mass galaxies. Furthermore, as noted in Section 3.1, the lack of a direct implementation of dynamical friction from stars and dark matter in the simulations – only dynamical friction from gas is included on-the-fly – also goes in the direction of reducing the number of MBH mergers, since with additional friction the MBHs would have a smoother dynamics, bind more easily, and numerical mergers would be facilitated.

Including dynamical delays in post-processing can severely reduce the raw merger rate from numerical mergers (Katz et al. 2020). Adding delays shifts the merger rate to lower redshift, with a peak at $z \sim 1$ –2. This is favourable for electromagnetic counterpart searches, since the counterparts will be brighter and with better sky localization from LISA (McGee, Sesana & Vecchio 2020). We postpone a complete study of the counterparts to a future study.

The merger rate is generally lower than that predicted by semi-analytical models, mostly because only few semi-analytical models include dynamical modelling of MBH orbital decay and binary evolution (Volonteri et al. 2003; Barausse 2012; Bonetti et al. 2019), and even in these cases the early evolution is normally approximated by integrated dynamical friction time-scales such as equation (1) that do not capture the more erratic and stochastic behaviour seen in simulations (Pfister et al. 2019; Bortolas et al. 2020). Our study includes integrated dynamical friction time-scales in post-processing, but before the numerical merger dynamics is calculated directly in the simulation: MBHs respond to inhomogeneous, time-varying conditions and the direct implementation of dynamical

friction, although only from gas, allows us to account for evolution of the MBH mass and of the environment on-the-fly. Recently, Barausse et al. (2020) include in a semi-analytical additional kpc-scale delays before formation of binaries, and show that the merger rate is then greatly reduced.

Furthermore, the highest merger rate in semi-analytical models is predicted when including the mergers of the remnants of Population III stars in very high redshift galaxies (Sesana et al. 2007; Klein et al. 2016; Ricarte & Natarajan 2018; Dayal et al. 2019), which we do not treat in our simulations (see Katz et al. 2020, for a careful comparison between simulations and semi-analytical models).

The predicted merger rate from HORIZON-AGN is also somewhat lower than in EAGLE or Illustris (Salcido et al. 2016; Katz et al. 2020) because in our simulations MBHs are not constantly repositioned at the centre of the potential minimum, which makes MBHs merge immediately after galaxy mergers: even adding delays in post-processing simulations with MBH repositioning facilitate mergers. In both HORIZON-AGN and NEWHORIZON, the large-scale dynamics is driven by the explicit use of a drag force, and we include delays in post-processing only below resolution.

The most important point in the comparison between HORIZON-AGN and NEWHORIZON, however, is that a small, high-resolution simulation like NEWHORIZON predicts higher merger rates than a large, low-resolution simulation like HORIZON-AGN. The reason is the ability to track mergers of low-mass galaxies hosting MBHs. Although the occupation fraction of MBHs in galaxies is predicted to decrease with galaxy mass (Volonteri, Lodato & Natarajan 2008; van Wassenhove et al. 2010), observationally it seems to be between 0.1 and 1 in galaxies with mass $\sim 10^9 M_\odot$ at $z = 0$ (Miller et al. 2015; She, Ho & Feng 2017) and between 0.5 and 1 when considering local galaxies within 4 Mpc and mass $\sim 10^9 - 10^{10} M_\odot$ and published

MBH dynamical masses or limits (Nguyen et al. 2018). We refer to Greene, Strader & Ho (2019) for a review. At $z = 0.45$, the occupation fraction of MBHs within $2R_{\text{eff}}$ in NEWHORIZON is 0.1 at $M_{\text{gal}} = 10^6 M_{\odot}$ and it reaches unity at $M_{\text{gal}} = 10^9 M_{\odot}$, while it becomes about 2, i.e. there are on average two MBHs within a galaxy, at $M_{\text{gal}} = 10^{10.5} M_{\odot}$. Tracing MBHs in dwarf galaxies is crucial.

In the context of LISA’s science, simulations like HORIZON-AGN, EAGLE, or Illustris, which do not resolve dwarf galaxies, will underestimate the merger rate of LISA’s MBHs. A simulation like Romulus (Tremmel et al. 2017), with volume and resolution intermediate between HORIZON-AGN and NEWHORIZON, and also seeding MBHs in low-mass galaxies like NEWHORIZON, is a good compromise. Ideally, we would like a simulation with the resolution of NEWHORIZON and the volume of HORIZON-AGN run to $z = 0$: unfortunately this is currently computationally unfeasible.

4.3 Which galaxy mergers lead to black hole mergers?

Beyond semi-analytical models and simulations, another technique often used to estimate the MBH merger rate is through the galaxy merger rate, assuming scaling relations between galaxies and MBHs (Sesana 2013; Simon & Burke-Spolaor 2016; Chen, Sesana & Conselice 2019). We test this approach here, by relating MBH mergers to the galaxy merger they originated from. In our general picture, at the beginning of a galaxy merger, each MBH sits at the centre of the merging galaxy, and for mass ratios of the merging galaxies > 1 : 4 we expect that the two MBHs end up in the centre of the merger in a bound binary (Begelman, Blandford & Rees 1980; Callegari et al. 2009; Van Wassenhove et al. 2012; Pfister et al. 2017). In the case of low-mass MBHs, however, this picture may not capture the full behaviour. Low-mass MBHs may not reside in the centre of their host galaxy (Bellovary et al. 2019) and/or their dynamical evolution can be subject to disturbances (Pfister et al. 2019) preventing the formation of the binary even in mergers between similar mass galaxies.

We compare the whole distribution of galaxy stellar masses and mass ratios to that of galaxy mergers that lead to MBH mergers in Fig. 6. Additional parameters play a role, e.g. the compactness of the satellite galaxy (Tremmel et al. 2018), but these quantities are hard to measure in observations, therefore we focus here only on masses and mass ratios, since these are ‘macroscopic’ quantities that can be measured in observations, although even measuring a galaxy stellar mass requires some modelling from imaging and spectroscopy.

We consider here ‘numerical MBH mergers’, while the results when we include dynamical friction are discussed further down. We define $M_{\text{gal},1}$ as the most massive of the two merging galaxies, but in ~ 10 percent of cases the least massive MBH is hosted in the most massive galaxy of the pair (violet histograms in Fig. 6). Each histogram is normalized to the total number of objects in the respective catalogue, and in HORIZON-AGN the galaxy mergers identified as sources of an MBH merger represent 16 percent of the total number of mergers for catalogue *sel*, and 37 percent of catalogue *all*; the fractions for NEWHORIZON are even smaller (3.5 percent and 4 percent, respectively): not all galaxy mergers lead to an MBH merger. The reason is twofold: the occupation fraction of MBHs is below unity in low-mass galaxies (Volonteri, Lodato & Natarajan), so the probability of a merger between two galaxies each hosting an MBH is also much lower than unity (as a first approximation this probability scales as the occupation fraction squared, although biased regions experience an enhanced number of mergers). Furthermore, even if galaxies merge, the MBHs can

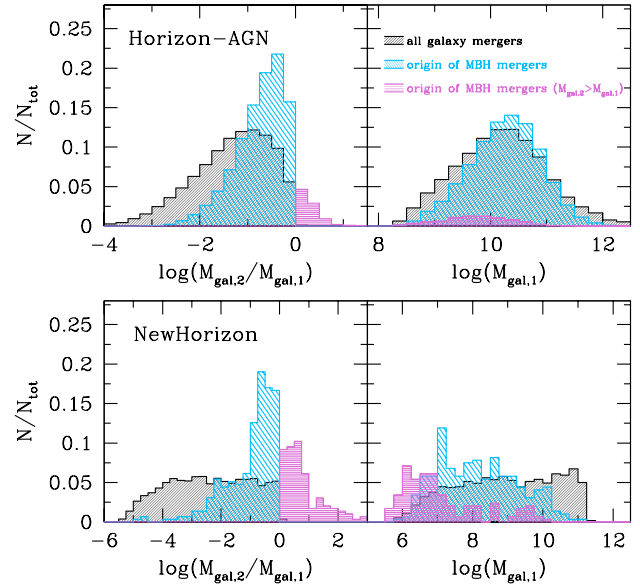


Figure 6. Properties of galaxy mergers in HORIZON-AGN (top two panels) and NEWHORIZON (bottom two panels). In black, we show the distribution for all galaxy mergers in the simulation, and in blue the distribution for the galaxy mergers that lead to MBH mergers in catalogue *sel*. $M_{\text{gal},1}$ is the stellar mass of the most massive of the two merging galaxies, so the distribution is truncated at a mass ratio equal to unity. Each histogram is normalized to the total number of objects in the respective distribution. We show in violet the distribution for the cases where the least massive MBH is hosted in the most massive galaxy of the pair, normalized to the total number of galaxy mergers leading to MBH mergers. The masses of the galaxies belonging to this subset are shown in violet in the right-hand panels. The distribution of galaxy mergers sourcing MBH mergers is skewed towards larger mass ratios with respect to the full underlying galaxy merger population.

be stalled at large separations in the galaxy even for major mergers (Tremmel et al. 2018).

As expected, galaxy mergers that generate MBH mergers are a biased sample with respect to the general merging population, specifically they have a higher mass ratio compared to the full distribution: in HORIZON-AGN the mean mass ratio is 0.05 for the general population, and 0.17 for *sel*, for NEWHORIZON they are, respectively, 0.004 and 0.1 so that even minor mergers, i.e. with mass ratio < 1 : 4 contribute to sourcing MBH mergers, and in fact they represent more than 50 per cent of the sample.

In HORIZON-AGN, the masses of galaxies sourcing MBH mergers are somewhat larger than those of the full merging population. The reason is that the occupation fraction of MBHs is larger in more massive galaxies (for HORIZON-AGN see figs 9 and 10 in Volonteri et al. 2016, for NEWHORIZON the trend is similar at $M_{\text{gal}} > 10^{8.5} M_{\odot}$ and follow the same slope at lower galaxy mass, reaching ~ 0.1 – 0.3 at $M_{\text{gal}} = 10^6 M_{\odot}$. Note that both in HORIZON-AGN and in NEWHORIZON some galaxies host multiple MBHs). In the case of NEWHORIZON, the increase in galaxy mass seems to disappear, but this is because most mergers involving galaxies with mass $> 10^{10} M_{\odot}$ are very minor mergers. If we restrict the mass distribution to mergers with mass ratio > 0.1 , the masses of primary galaxies in mergers leading to MBH mergers are 0.5 dex larger than the mean galaxy masses of the global merging population (the same is true if we perform the same mass ratio cut in HORIZON-AGN).

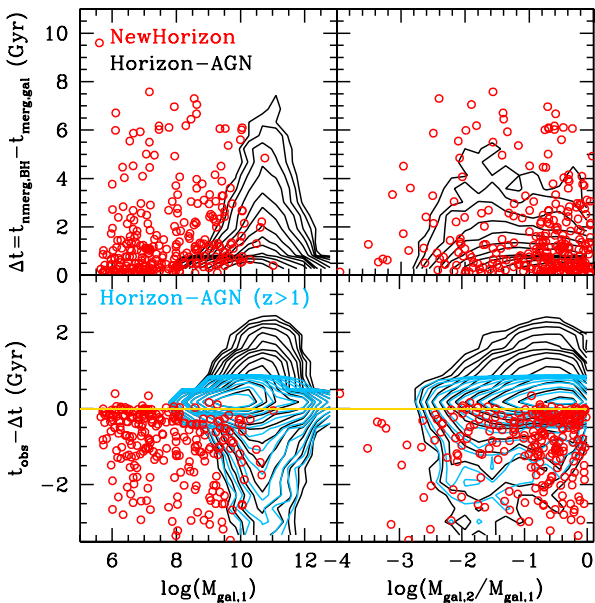


Figure 7. Top: Delay between galaxy merger and MBH numerical merger in HORIZON-AGN (black contours) and NEWHORIZON (red circles) as a function of mass of the primary galaxy, $M_{\text{gal},1}$ (left), and galaxy mass ratio (right) for catalogue *sel*. NEWHORIZON has been analysed down to $z = 0.45$, when the age of the Universe is almost 9 Gyr, which is why the delay times are always shorter than ~ 8 Gyr. Bottom: Difference between the time during which one would observe the galaxy pair as actively merging and the time elapsed from the galaxy merger and the MBH numerical merger, a lower limit to the effective time of the MBH merger since we have not included the delays calculated in post-processing. For HORIZON-AGN, we show 20 logarithmic spaced contours in black, with the light blue contours for mergers at $z > 1$. All MBHs below the yellow horizontal line will merge after the galaxies are in an observable merger phase. The MBH mergers most relevant for LISA, in galaxies with mass $< 10^{10} M_{\odot}$, occur after any sign of the galaxy merger that generated the MBH merger has disappeared in terms of the structure or kinematics of the galaxy.

When we require that the dynamical friction time-scales added in post-processing bind the MBHs within the Hubble time at $z = 0$, the mean mass ratios increase to 0.22 and 0.14 for HORIZON-AGN and NEWHORIZON, while the galaxy masses decrease slightly. Dynamical friction time-scales are shorter the larger the mass of the infalling MBH, and therefore the more massive its host galaxy, $M_{\text{gal},2}$, in general, while they are shorter the smaller the $M_{\text{gal},1}$, via σ in equation (1). Furthermore, as mergers involving massive galaxies happen at later times, there is less time to complete the dynamical friction phase by $z = 0$.

In Fig. 7, we show the time delay between when galaxies merge and when their MBHs are numerically merged, $\Delta t = t_{\text{merg}, \text{BH}} - t_{\text{merg}, \text{gal}}$, for the *sel* selection. We recall that the time of the merger is defined as when two galaxies have the same main descendant, i.e. only one galaxy is identified by the halo finder. These delays do not include any of the time-scales added in post-processing therefore they are lower limits to the time when MBHs actually merge. Overall, there is a wide range of delays at any given galaxy mass or mass ratio and there is no simple fit/trend to describe the delays.

Typically when mergers occur, the signatures of these events in the remnant morphologies, structures, and kinematics will last for around 1–1.5 Gyr, at most (Conselice 2006). This is, however, for the central parts of the remnant galaxy which is most readily visible,

and often the only parts visible. Outer tidal features may persist for some time, and shells for far longer (Pop et al. 2017) but both of these are very difficult to observe as they only exist in low surface brightness light, which even for nearby galaxies is not easily seen even when using extremely deep exposures and performing careful sky subtraction. The structural peculiarities in the central parts of these remnant mergers will last for a maximum of 2 Gyr or so. If we use the merger time-scale from Snyder et al. (2017) and Duncan et al. (2019) of $2.4 \text{ Gyr} (1+z)^{-2}$, we obtain the result shown in the bottom panel of Fig. 7 demonstrating that this merger time has elapsed before most galaxies will merge their black holes. This 2.4 Gyr time, scaled by redshift, is the pair time-scale to go from 30 kpc to effectively the start of the merger process. This is therefore the time for two galaxies to merge, but not necessarily the time it would take to coalesce into a single system. After this 2.4 Gyr time, scaled by redshift, there will be some time afterwards when the galaxy is still morphologically and structurally distorted, before it dynamically relaxes. However, this time-scale would be about $1.5(1+z)^{-2} \text{ Gyr}$ (e.g. Snyder et al. 2017). This time-scale is shorter at higher redshifts, meaning that the merger signatures will disappear even faster at earlier times.

Overall, taking $t_{\text{obs}} = 2.4(1+z)^{-2} \text{ Gyr}$, the values shown in Fig. 7 are upper limits to the time we could identify these systems as mergers through pair selection or a morphological approach such as the CAS (concentration C, asymmetry A, and clumpiness S) method for ongoing mergers, or the use of visual morphologies or machine learning techniques to identify peculiar structures (e.g. Conselice 2003). For the simulation, we consider the time elapsed from the galaxy merger and the MBH numerical merger, Δt , which sets a lower limit on MBH merger time-scales as we do not include any of the delays discussed in Section 3.2. The choices have been very conservative: for MBHs we do not include all the time delays after the numerical merger, and therefore underestimate the time between galaxy and MBH merger. For galaxies, the $2.4(1+z)^{-2} \text{ Gyr}$ time-scale is the time to start galaxy coalescence from when they are separated by 30 kpc. The $1.5(1+z)^{-2} \text{ Gyr}$ time-scale is the post-merger time over which discernible features are observable. The time we consider for the MBHs is the post-merger phase therefore it should be compared to the $1.5(1+z)^{-2} \text{ Gyr}$ time-scale, but we considered the $2.4(1+z)^{-2} \text{ Gyr}$ time-scale to be more conservative and have a more robust result.

Using this criterion, all MBHs below the yellow horizontal line will merge after the host galaxy can be observed to be in interaction. The difference between the two simulations can be ascribed to two main reasons: (i) HORIZON-AGN includes mergers at $z < 1$ for which t_{obs} is longer, and (ii) at a fixed galaxy mass MBHs are lighter in NEWHORIZON therefore the orbital decay longer: the simulations include on-the-fly dynamical friction following (Ostriker 1999), where the deceleration depends linearly on the mass of the MBH.

The result of this is that if the LISA sources are identified in a galaxy it is very likely that the system will be dynamically and morphologically relaxed given the long time period between the galaxy merger and the merger of the central black holes, as long as no further galaxy merger intervenes during Δt . MBHs in massive galaxies at low redshift, i.e. those relevant for PTA, are more likely to be found in galaxies that show signs of interaction caused by the same galaxy merger that supplied the MBH for the MBH merger. MBHs hosted in relatively small galaxies at high redshift, which are most relevant for LISA, will merge in galaxies where the signs of the interaction that generated the merger have been erased. However, at $z > 1$ the galaxy merger rate is very high, and a galaxy can

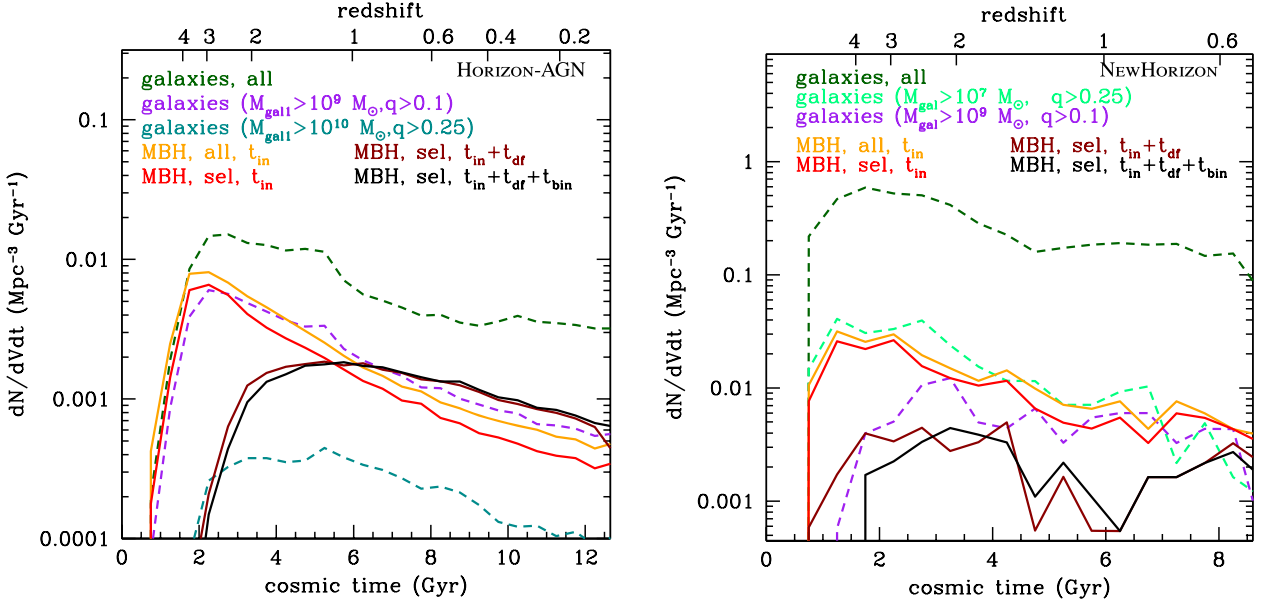


Figure 8. Comparison between the galaxy and MBH merger rate for HORIZON-AGN (left) and NEWHORIZON (right, note the different y-axes). This is shown as intrinsic merger rate, not as the observable merger rate. For the galaxy merger rate, we show some examples of stellar mass and mass ratio cuts. The MBH ‘numerical’ merger rate differs from the galaxy merger rate in normalization, while including dynamical delays changes also the shape of the distribution.

experience one or more galaxy mergers during Δt , as can be seen in the examples in Section 4.4. It is important, however, to realize that the disturbed morphology of the galaxy is not caused by the same galaxy merger from which the MBH merger originated: without taking this effect into account risks misassociating galaxy and MBH mergers, which would lead to incorrectly inferring short merger time-scales for MBHs.

We conclude this section by comparing the galaxy⁵ and MBH merger rate in Fig. 8. As already noted, the total number of galaxy mergers is larger than the total number of MBH mergers, because not all galaxies host MBHs, and not all galaxy mergers lead to an MBH–MBH merger. If we consider only numerical mergers, i.e. without including delays in post-processing, the change between the galaxy and MBH merger rate is mostly in the normalization, because at least some of the delays shown in Fig. 7 are short. Adding additional time to the delay between the numerical merger and the formation of the binary or the merger of the binary causes a shift in both normalization and shape, i.e. MBH mergers are shifted to later cosmic times. We show some reference cuts in mass and mass ratio to galaxy mergers inspired by the distributions shown in Fig. 6. Given that delay times are not easily connected to basic observable galaxy properties (mass, mass ratio), converting a galaxy merger rate into an MBH merger rate is non-trivial. Although the full physical picture of linking MBH and galaxy mergers is complex, it is generally possible to infer statistical MBH merger rates from galaxy merger rates, but the cuts in mass and mass ratio should be tuned to the particular MBH properties of interest.

As Fig. 9 shows, the probability for two galaxies to merge and then to contain an MBH numerical merger within 3 Gyr is highest for the higher stellar mass systems, and appears to drop in the

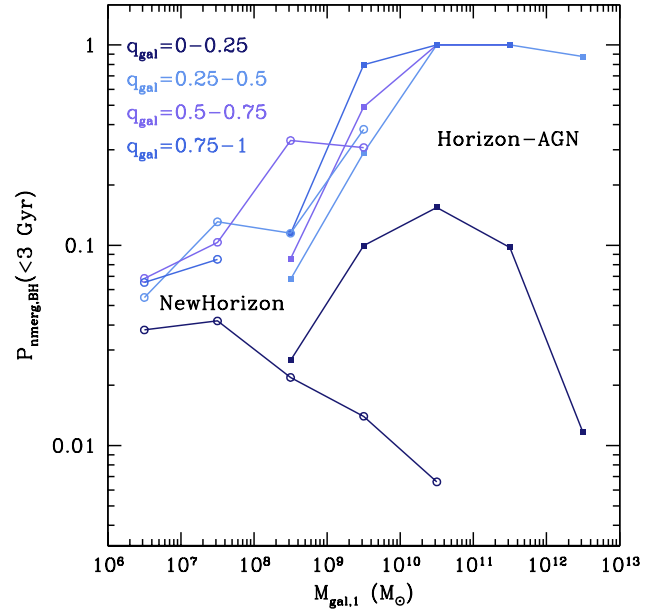


Figure 9. Probability that a galaxy merger with a primary galaxy stellar mass $M_{\text{gal},1}$ and mass ratio $q_{\text{gal}} = M_{\text{gal},2}/M_{\text{gal},1} \leq 1$ is followed by an MBH merger within 3 Gyr. This probability takes into account that not all galaxy mergers lead to an MBH merger but does not include the delays calculated in post-processing, see Figures 6 and 7 and related discussion in the text.

HORIZON-AGN simulation at lower masses, although this drop is less steep for the NEWHORIZON simulation, where low-mass galaxies are better resolved and have a higher MBH occupation fraction. This probability takes into account that not all galaxy mergers lead to an MBH merger, explaining why although most MBHs have $\Delta t = t_{\text{nmerg,BH}} - t_{\text{nmerg,gal}} < 3$ Gyr in Fig. 7, the probability is generally < 1 , except at the high-mass end for mass ratios > 0.25 . What this

⁵For a general discussion on galaxy mergers in simulations, see e.g. Rodríguez-Gómez et al. (2015). We only note there that the galaxy merger rate of NEWHORIZON and HORIZON-AGN is in good agreement with observations (Duncan et al. 2019).

plot shows is that we are more likely to find an MBH merger in more massive galaxies. Observationally, this is important if we want to trace the merger history of MBHs from examining the merger history of galaxies (e.g. Conselice et al., in preparation). Interestingly, this plot also shows that there is a higher probability for MBH mergers to occur for major mergers where the $q_{\text{gal}} = M_{\text{gal},2}/M_{\text{gal},1} \leq 1$ ratio is larger than for more minor mergers. For shorter time periods, this decreases at lower galaxy masses and lower mass ratio of galaxy mergers, and for longer time periods there is a slight increase, with differences being more pronounced for NEWHORIZON.

4.4 Galaxy evolution during black hole dynamical evolution

While the observability of electromagnetic counterparts, from the MBHs themselves or from the host galaxies, will be the subject of a future work, let us study some representative cases in NEWHORIZON, to highlight the importance of dynamical delays in determining what type of galaxies host MBH mergers. In the following figures, galaxies are represented with false-colour maps of their surface brightness through rest-frame u , g , and r filters including the absorption by dust.

In the first example of an MBH merger, of MBHs ‘936’ and ‘41’ (Fig. 10), which originated from a merger between two galaxies with mass $2 \times 10^9 M_\odot$ and $10^{10} M_\odot$ at $z = 3.18$, the MBHs are numerically merged at $z = 2.6$, with an ensuing dynamical friction time-scale of about 10.8 Gyr, meaning that it finishes at $z \sim 0.01$, beyond the end time of the simulation. Disturbed features in the host galaxy, with mass $6 \times 10^{10} M_\odot$, at $z = 1.19$ are not related to the memory of the initial merger at $z = 3.18$ but to a merger with mass ratio 0.73 at $z = 1.22$.

The second example is another merger involving MBH ‘936’, this time with MBH ‘96’ (Fig. 11). It started with the same galaxy merger as ‘936’ and ‘41’, with MBHs ‘41’ and ‘96’ in the same galaxy at that time, but the MBH numerical merger happens much later, at $z = 1.38$, when 2.67 Gyr have elapsed from the initial galaxy merger. The galaxy, however, has experienced another 0.2 mass ratio merger at $z = 1.39$. Dynamical friction ends at $z = 0.6$, when the galaxy is almost $7 \times 10^{10} M_\odot$.

In the third MBH merger, of MBH ‘796’ and MBH ‘9’ (Fig. 12), the initial galaxy merger took place at $z = 3.76$, with a mass ratio of 0.77, between two galaxies with mass $\sim 10^9 M_\odot$. The two MBHs are numerically merged at $z = 1.58$, ~ 2.53 Gyr later, when the galaxy is experiencing a new merger, with a galaxy 5 times lighter. The ensuing dynamical friction and binary evolution time-scales end at $z = 1.19$, corresponding to a cosmic time of ~ 5.29 Gyr. During the latter phase of dynamical evolution, the galaxy has grown to $4 \times 10^{10} M_\odot$ and experienced four additional mergers with mass ratio > 0.1 .

The fourth case, MBHs ‘166’ and ‘656’ (Fig. 13), starts with the merger of two galaxies with mass ratio 0.32 at $z = 2.24$, where the least massive galaxy has a mass of $10^{10} M_\odot$. The numerical merger happens 0.5 Gyr later, when the galaxy has not relaxed yet from the merger, and our estimates for subsequent delays are very short, less than 0.1 Myr each, since the MBHs numerically merge very close to the centre of a galaxy with high stellar and gas density. This is a genuine case where the host galaxy is disturbed because of the galaxy merger from which the MBH merger originated.

The fifth example, of MBH ‘455’ merging with MBH ‘156’ (Fig. 14), originated in a very minor galaxy merger at $z = 7.4$ with the most massive galaxy weighing $2.5 \times 10^7 M_\odot$ and the least massive $10^6 M_\odot$. The two MBHs are numerically merged at $z = 6.4$, ~ 0.18 Gyr later, and despite the short intervening time the host galaxy has experienced a further merger with a mass ratio of 0.18.

The dynamical friction time-scale is ~ 1.87 Gyr, ending at $z = 2.43$. When the MBHs form a binary, the host galaxy has increased its mass to $7 \times 10^9 M_\odot$. By this time the host galaxy has experienced two additional mergers with mass ratio > 0.1 and is on its way to another major galaxy merger, but none of these are the origin of the MBH merger in question.

We end therefore with a word of caution on looking for the host galaxies of LISA MBH mergers among galaxies with signs of interactions: a galaxy could be involved in a merger at the time of an MBH binary coalescence, but it would generally be a random coincidence, due to the elevated merger rate of galaxies at high redshift.

5 CONCLUSIONS

In this paper, we have compared the predictions for MBH mergers in two simulations, one large-volume low-resolution, the other small-volume, high-resolution. HORIZON-AGN is one of the largest hydrodynamical simulations to date run with full galaxy formation physics and produces an MBH population in good agreement with observations at mass $> 10^7 M_\odot$. NEWHORIZON is a zoom within HORIZON-AGN, run with very high mass and spatial resolution, able to resolve dwarf galaxies, and contains ~ 17 galaxies with masses larger than $10^{10} M_\odot$ at $z = 0.45$, but no MBHs with masses $> 2 \times 10^7 M_\odot$ at the same redshift. The two simulations can be considered as prototypical for studying PTA’s and LISA’s MBHs, respectively.

We select MBHs merged in the simulation and add delays in post-processing to describe dynamical processes occurring on subresolution scales. We then connect MBH mergers to the galaxy mergers from which they originated to study the connection between galaxy and MBH mergers. We summarize our main results here.

- (i) In low-resolution simulations, modelling delays requires significant extrapolations since MBHs are merged when they are at very large separation and galaxy properties are smoothed over larger scales.
- (ii) If the galaxy central stellar density is high, stellar hardening is the leading process shrinking binaries, more effective than migration in circumbinary gas discs.
- (iii) Including subgrid dynamical delays causes a loss of events and shifts the peak of the MBH merger rate to $z \sim 1-2$.
- (iv) Considering macroscopic properties that can be obtained from observations (mass, mass ratio), galaxy mergers leading to MBH mergers are a biased sample of the general merging galaxy population and the time delay between galaxy and MBH merger has a large scatter at fixed merger properties. This complicates converting a galaxy merger rate into an MBH merger rate.
- (v) The time delay between galaxy and MBH merger is generally longer than the time over which the galaxies would be classified as ‘in interaction’ or ‘disturbed’. The hosts of LISA’s MBHs may, however, appear to be disturbed because of further intervening mergers, caused by the high merger rate of high- z galaxies.
- (vi) The merger rate estimated from a small high-resolution simulation is larger than the one from a much larger low-resolution simulation because the latter misses the low-mass galaxies that dominate the galaxy merger rate. This is especially important for the low-mass MBHs relevant for LISA.

Simulations are starting to resolve the masses of galaxies hosting MBHs of interest for LISA in sufficient large numbers for (small) statistical studies, but this improvement in volume/resolution is not sufficient to obtain realistic merger rates. It must be accompanied by



Figure 10. False colours *ugr* image of the evolutionary sequence for the MBH merger 936+41 in NEWHORIZON. The red circles mark the position of the MBH(s). From left to right: the galaxy merger ($z = 3.18$, $t = 2.00$ Gyr), the time of the MBH numerical merger ($z = 2.61$, $t = 2.56$ Gyr), and at the end of the simulation, $z = 0.45$, the dynamical friction time-scale would end at $z = 0.01$. Image sizes: 50, 50, and 20 kpc.

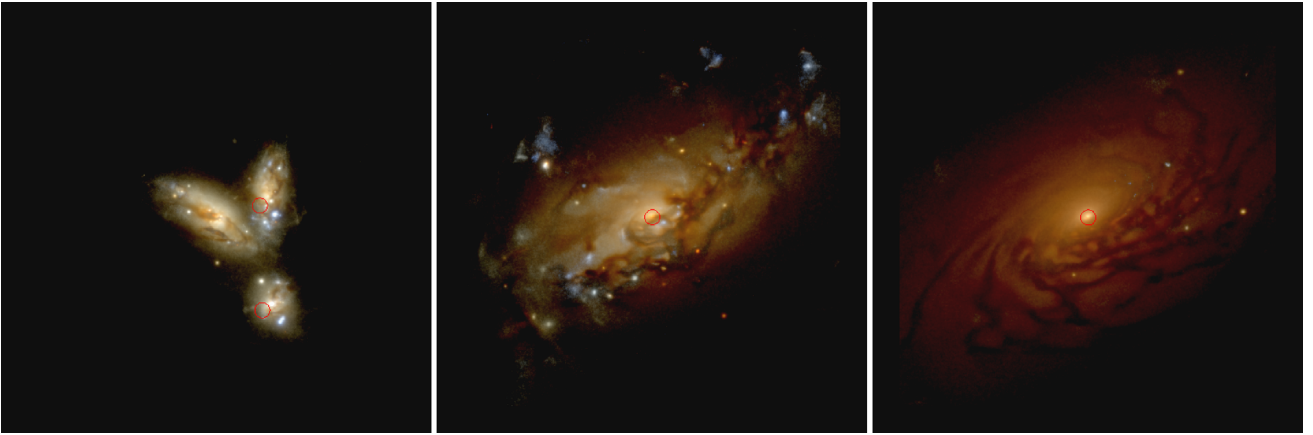


Figure 11. False colours *ugr* image of the evolutionary sequence for the MBH merger 936+96 in NEWHORIZON. The red circles mark the position of the MBH(s). From left to right: the galaxy merger ($z = 3.18$, $t = 2.00$ Gyr; this is the same merger shown in Fig. 10, left), the time of the MBH numerical merger ($z = 1.38$, $t = 4.67$ Gyr), and after the dynamical friction time-scale has elapsed $z = 0.60$, $t = 8.02$ Gyr). Image sizes: 50, 20, and 20 kpc.

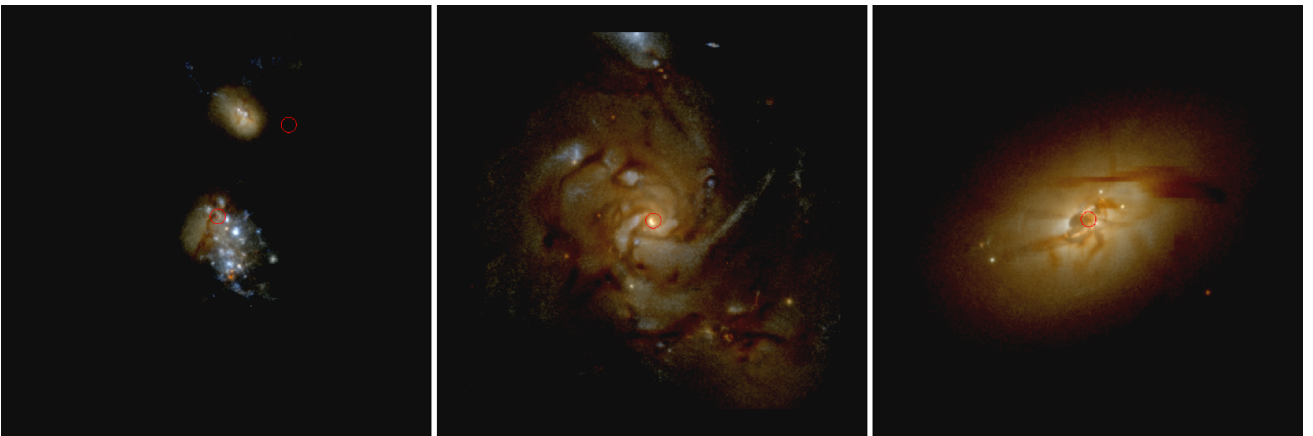


Figure 12. False colours *ugr* image of the evolutionary sequence for the MBH merger 796+9 in NEWHORIZON. The red circles mark the position of the MBH(s). From left to right: the galaxy merger ($z = 3.76$, $t = 1.64$ Gyr), the time of the MBH numerical merger ($z = 1.58$, $t = 4.17$ Gyr), after the dynamical friction time-scale has elapsed ($z = 1.19$, $t = 5.29$ Gyr). Image sizes: all 20 kpc.

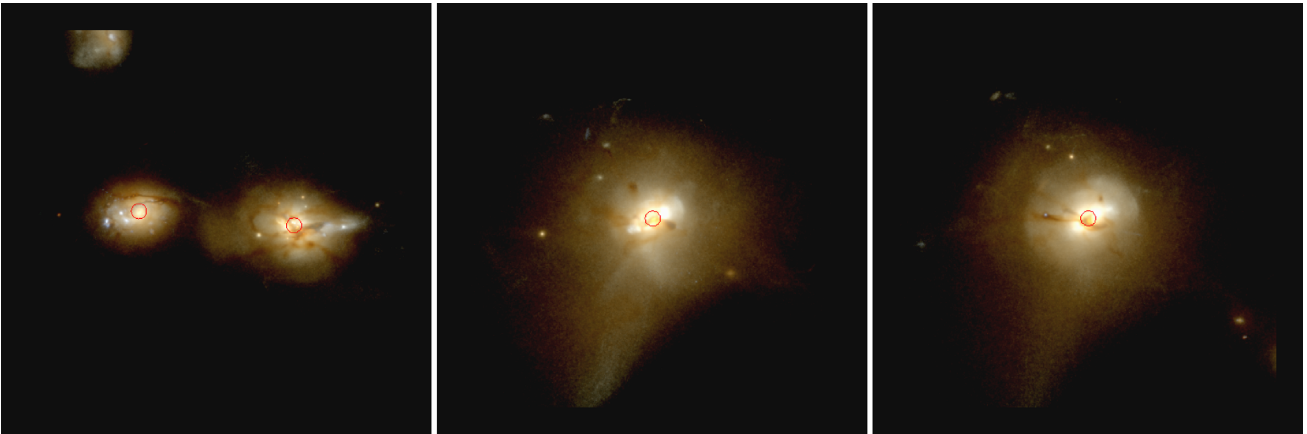


Figure 13. False colours *ugr* image of the evolutionary sequence for the MBH merger 166+656 in NEWHORIZON. The red circles mark the position of the MBH(s). From left to right: the galaxy merger ($z = 2.24$, $t = 2.95$ Gyr), the time of the MBH numerical merger ($z = 1.93$, $t = 3.48$ Gyr), after the dynamical friction time-scale has elapsed ($z = 1.90$, $t = 3.53$ Gyr). Image sizes: all 50 kpc.

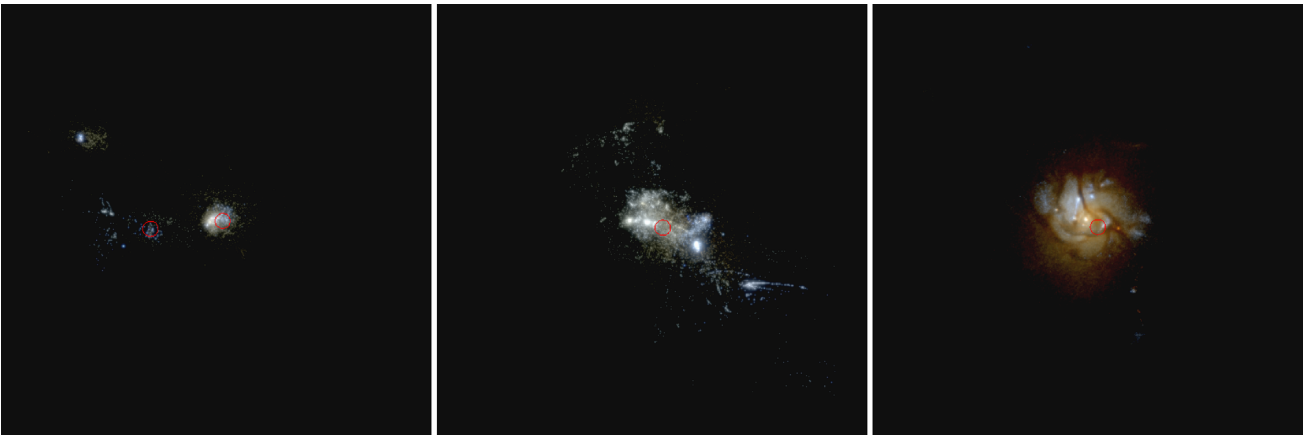


Figure 14. False colours *ugr* image of the evolutionary sequence for the MBH merger 455+156 in NEWHORIZON. The red circles mark the position of the MBH(s). From left to right: the galaxy merger ($z = 7.37$, $t = 0.68$ Gyr), the time of the MBH numerical merger ($z = 6.39$, $t = 0.88$ Gyr), after the dynamical friction time-scale has elapsed ($z = 2.43$, $t = 2.76$ Gyr). Image sizes: 10, 10, and 20 kpc.

the inclusion of appropriate subgrid physics to track as faithfully as possible MBH dynamics down to the smallest scales. This includes not pinning MBHs to galaxy centres, as that removes all the dynamical evolution and causes artificially early MBH mergers (Tremmel et al. 2015). Unresolved dynamical friction from dark matter, stars, and gas must be included, and, especially when investigating LISA’s MBHs, care must be also put into keeping a good ratio of MBH seed mass to dark matter/stellar/gas particle to avoid spurious oscillations, especially for MBH seeding procedures motivated by MBH formation models, which in some cases can have seed masses as low as $100 M_{\odot}$.

We note also that NEWHORIZON is seeded with MBHs with mass $10^4 M_{\odot}$, which have been shown by Pfister et al. (2019) to have erratic dynamics at high redshift, leading them to stall in mass growth making them hardly able to bind in binaries. Higher mass seeds suffer less from this effect, therefore if in the ‘real’ Universe MBH seeds were typically more massive than $10^4 M_{\odot}$, but formed with the same number density, the merger rate would be higher.

This leads to the inference of a statistical argument on MBH seeds: if LISA does not detect any high-redshift mergers, it means that there are not many seeds with mass $\sim 10^5 M_{\odot}$ hosted in galaxies with conspicuous stellar and gas content allowing binary hardening and migration. This result is the opposite of many semi-analytical models

that do not include the erratic seed behaviour (Sesana et al. 2007; Klein et al. 2016; Ricarte & Natarajan 2018; Dayal et al. 2019), since light seeds are more common than heavy seeds, i.e. they have a larger number density (Valiante et al. 2016; Dayal et al. 2019). In a nutshell, light MBH seeds are predicted to form in larger numbers than heavy seeds, but light MBH seeds have more difficulty binding in binaries, and therefore their merger rate is suppressed. Unfortunately this is a very degenerate problem: seed formation, growth, and dynamics all play equally important roles. Care will be needed when interpreting LISA data.

ACKNOWLEDGEMENTS

This work was supported by the Centre national d’études spatiales (CNES) for the space mission LISA. The authors thank the anonymous referee for a constructive review. MV thanks Helvi Witek for stressing the importance of the mass ratio distribution of merging MBHs and Michael Tremmel for thoughtful comments. MV and MC would like to acknowledge networking support by the COST Action GWverse CA16104. This work was partially supported by the Segal grant ANR-19-CE31-0017 (www.secular-evolution.org) of the French Agence Nationale de la Recherche and by the

ANR grant LYRICS (ANR-16-CE31-0011). HP is indebted to the Danish National Research Foundation (DNRF132) and the Hong Kong government (GRF grant HKU27305119) for support. RJ acknowledges support from the STFC [ST/R504786/1]. SKY acknowledges support from the National Research Foundation of Korea (NRF-2020R1A2C3003769). MT is supported by the Deutsche Forschungsgemeinschaft (DFG, German Research Foundation) under Germany's Excellence Strategy EXC 218/1 - 390900948 (the Heidelberg STRUCTURES Excellence Cluster). This work was granted access to the HPC resources of CINES under the allocations 2013047012, 2014047012, 2015047012, c2016047637, A0020407637 made by GENCI and KSC-2017-G2-0003 by KISTI, and as a 'Grand Challenge' project granted by GENCI on the AMD-Rome extension of the Joliot Curie supercomputer at TGCC, and under the allocation 2019-A0070402192 made by GENCI. This work has made use of the Horizon Cluster hosted by Institut d'Astrophysique de Paris. We thank Stephane Rouberol for running smoothly this cluster for us.

DATA AVAILABILITY

The data underlying this article were provided by the Horizon-AGN and NewHorizon collaborations by permission. Data will be shared on request to the corresponding author with permission of the Horizon-AGN and NewHorizon collaborations.

REFERENCES

- Aasi J. et al., 2014, *Class. Quantum Gravity*, 31, 115004
- Abbott B. P. et al., 2016, *Phys. Rev. Lett.*, 116, 061102
- Amaro-Seoane P. et al., 2017, preprint ([arXiv:1702.00786](https://arxiv.org/abs/1702.00786))
- Arca-Sedda M., Gualandris A., 2018, *MNRAS*, 477, 4423
- Aubert D., Pichon C., Colombi S., 2004, *MNRAS*, 352, 376
- Barack L. et al., 2019, *Class. Quantum Gravity*, 36, 143001
- Barausse E., 2012, *MNRAS*, 423, 2533
- Barausse E., Dvorkin I., Tremmel M., Volonteri M., Bonetti M., 2020, preprint ([arXiv:2006.03065](https://arxiv.org/abs/2006.03065))
- Bardeen J. M., 1970, *Nature*, 226, 64
- Baron D., Ménard B., 2019, *MNRAS*, 487, 3404
- Begelman M. C., Blandford R. D., Rees M. J., 1980, *Nature*, 287, 307
- Bellovary J. M., Cleary C. E., Munshi F., Tremmel M., Christensen C. R., Brooks A., Quinn T. R., 2019, *MNRAS*, 482, 2913
- Benson A. J., Babul A., 2009, *MNRAS*, 397, 1302
- Berti E., Volonteri M., 2008, *ApJ*, 684, 822
- Biava N., Colpi M., Capelo P. R., Bonetti M., Volonteri M., Tamfal T., Mayer L., Sesana A., 2019, *MNRAS*, 487, 4985
- Binney J., Tremaine S., 2008, in Binney J., Tremaine S., eds, *Galactic Dynamics: Second Edition*. Princeton University Press, Princeton, NJ
- Blandford R. D., Znajek R. L., 1977, *MNRAS*, 179, 433
- Bonetti M., Haardt F., Sesana A., Barausse E., 2018, *MNRAS*, 477, 3910
- Bonetti M., Sesana A., Haardt F., Barausse E., Colpi M., 2019, *MNRAS*, 486, 4044
- Booth C. M., Schaye J., 2009, *MNRAS*, 398, 53
- Bortolas E., Capelo P. R., Zana T., Mayer L., Bonetti M., Dotti M., Davies M. B., Madau P., 2020, preprint ([arXiv:2005.02409](https://arxiv.org/abs/2005.02409))
- Bower R. G., Schaye J., Frenk C. S., Theuns T., Schaller M., Crain R. A., McAlpine S., 2017, *MNRAS*, 465, 32
- Callegari S., Mayer L., Kazantzidis S., Colpi M., Governato F., Quinn T., Wadsley J., 2009, *ApJ*, 696, L89
- Callegari S., Kazantzidis S., Mayer L., Colpi M., Bellovary J. M., Quinn T., Wadsley J., 2011, *ApJ*, 729, 85
- Capelo P. R., Volonteri M., Dotti M., Bellovary J. M., Mayer L., Governato F., 2015, *MNRAS*, 447, 2123
- Chabrier G., 2005, in Corbelli E., Palle F., eds, *Astrophysics and Space Science Library*, Vol. 327, *The Initial Mass Function 50 Years Later*. Springer-Verlag, Berlin, p. 41
- Chapon D., Mayer L., Teyssier R., 2013, *MNRAS*, 429, 3114
- Chen S., Sesana A., Conselice C. J., 2019, *MNRAS*, 488, 401
- Colpi M., 2014, *Space Sci. Rev.*, 183, 189
- Conselice C. J., 2003, *ApJS*, 147, 1
- Conselice C. J., 2006, *ApJ*, 638, 686
- Dalgarno A., McCray R. A., 1972, *ARA&A*, 10, 375
- Davé R., Anglés-Alcázar D., Narayanan D., Li Q., Rafieferantsoa M. H., Appleby S., 2019, *MNRAS*, 486, 2827
- Dayal P., Rossi E. M., Shiralilou B., Piana O., Choudhury T. R., Volonteri M., 2019, *MNRAS*, 486, 2336
- Dekel A., Lapiner S., Dubois Y., 2019, preprint ([arXiv:1904.08431](https://arxiv.org/abs/1904.08431))
- Derdzinski A. M., D'Orazio D., Duffell P., Haiman Z., MacFadyen A., 2019, *MNRAS*, 486, 2754
- Dotti M., Merloni A., Montuori C., 2015, *MNRAS*, 448, 3603
- Dubois Y., Teyssier R., 2008, *A&A*, 477, 79
- Dubois Y., Devriendt J., Slyz A., Teyssier R., 2012, *MNRAS*, 420, 2662
- Dubois Y., Pichon C., Devriendt J., Silk J., Haehnelt M., Kimm T., Slyz A., 2013, *MNRAS*, 428, 2885
- Dubois Y., Volonteri M., Silk J., Devriendt J., Slyz A., 2014a, *MNRAS*, 440, 2333
- Dubois Y. et al., 2014b, *MNRAS*, 444, 1453
- Dubois Y., Volonteri M., Silk J., Devriendt J., Slyz A., Teyssier R., 2015, *MNRAS*, 452, 1502
- Dubois Y., Peirani S., Pichon C., Devriendt J., Gavazzi R., Welker C., Volonteri M., 2016, *MNRAS*, 463, 3948
- Duffell P. C., D'Orazio D., Derdzinski A., Haiman Z., MacFadyen A., Rosen A. L., Zrake J., 2019, preprint ([arXiv:1911.05506](https://arxiv.org/abs/1911.05506))
- Duncan K. et al., 2019, *ApJ*, 876, 110
- Faber S. M. et al., 1997, *AJ*, 114, 1771
- Farrar B. D., Duffell P., MacFadyen A. L., Haiman Z., 2015, *MNRAS*, 447, L80
- Feng W.-F., Wang H.-T., Hu X.-C., Hu Y.-M., Wang Y., 2019, *Phys. Rev. D*, 99, 123002
- Genel S. et al., 2014, *MNRAS*, 445, 175
- Greene J. E., Strader J., Ho L. C., 2019, preprint ([arXiv:1911.09678](https://arxiv.org/abs/1911.09678))
- Haardt F., Madau P., 1996, *ApJ*, 461, 20
- Habouzit M., Volonteri M., Dubois Y., 2017, *MNRAS*, 468, 3935
- Haehnelt M. G., 1994, *MNRAS*, 269, 199
- Jaffe A. H., Backer D. C., 2003, *ApJ*, 583, 616
- Jenet F. A., Lommen A., Larson S. L., Wen L., 2004, *ApJ*, 606, 799
- Jenet F. A., Hobbs G. B., Lee K. J., Manchester R. N., 2005, *ApJ*, 625, L123
- Katz M. L., Kelley L. Z., Dosopoulou F., Berry S., Blecha L., Larson S. L., 2020, *MNRAS*, 491, 2301
- Kelley L. Z., Blecha L., Hernquist L., 2017, *MNRAS*, 464, 3131
- Kennicutt R. C., Jr, 1998, *ApJ*, 498, 541
- Khan F. M., Fiacconi D., Mayer L., Berczik P., Just A., 2016, *ApJ*, 828, 73
- Kimm T., Cen R., Devriendt J., Dubois Y., Slyz A., 2015, *MNRAS*, 451, 2900
- King A. R., Lubow S. H., Ogilvie G. I., Pringle J. E., 2005, *MNRAS*, 363, 49
- Klein A. et al., 2016, *Phys. Rev. D*, 93, 024003
- Komatsu E. et al., 2011, *ApJS*, 192, 18
- Krolik J. H., Volonteri M., Dubois Y., Devriendt J., 2019, *ApJ*, 879, 110
- Krumholz M. R., Tan J. C., 2007, *ApJ*, 654, 304
- Lauer T. R. et al., 1995, *AJ*, 110, 2622
- Luo J. et al., 2016, *Class. Quantum Gravity*, 33, 035010
- Mangiagli A., Bonetti M., Sesana A., Colpi M., 2019, *ApJ*, 883, L27
- Martizzi D., Teyssier R., Moore B., Wentz T., 2012, *MNRAS*, 422, 3081
- McGee S., Sesana A., Vecchio A., 2020, *Nat. Astron.*, 4, 26
- McKinney J. C., Tchekhovskoy A., Blandford R. D., 2012, *MNRAS*, 423, 3083
- Merritt D., 2001, *ApJ*, 556, 245
- Miller B. P., Gallo E., Greene J. E., Kelly B. C., Treu T., Woo J.-H., Baldassare V., 2015, *ApJ*, 799, 98
- Milosavljević M., Merritt D., 2001, *ApJ*, 563, 34
- Miranda R., Muñoz D. J., Lai D., 2017, *MNRAS*, 466, 1170
- Moderski R., Sikora M., 1996, *MNRAS*, 283, 854

Moody M. S. L., Shi J.-M., Stone J. M., 2019, *ApJ*, 875, 66
 Muñoz D. J., Miranda R., Lai D., 2019, *ApJ*, 871, 84
 Nguyen D. D. et al., 2018, *ApJ*, 858, 118
 Noble S. C., Mundim B. C., Nakano H., Krolik J. H., Campanelli M., Zlochower Y., Yunes N., 2012, *ApJ*, 755, 51
 Ogiya G., Hahn O., Mingarelli C. M. F., Volonteri M., 2020, *MNRAS*, 493, 3676
 Ostriker E. C., 1999, *ApJ*, 513, 252
 Park M.-J. et al., 2019, *ApJ*, 883, 25
 Peirani S. et al., 2017, *MNRAS*, 472, 2153
 Pfister H., Lupi A., Capelo P. R., Volonteri M., Bellovary J. M., Dotti M., 2017, *MNRAS*, 471, 3646
 Pfister H., Volonteri M., Dubois Y., Dotti M., Colpi M., 2019, *MNRAS*, 486, 101
 Pfister H., Volonteri M., Lixin Dai J., Colpi M., 2020, *MNRAS*, 497, 2276
 Pillepich A. et al., 2018, *MNRAS*, 473, 4077
 Pop A.-R., Pillepich A., Amorisco N., Hernquist L., 2017, *Galaxies*, 5, 34
 Power C., Navarro J. F., Jenkins A., Frenk C. S., White S. D. M., Springel V., Stadel J., Quinn T., 2003, *MNRAS*, 338, 14
 Prugniel P., Simien F., 1997, *A&A*, 321, 111
 Rasera Y., Teyssier R., 2006, *A&A*, 445, 1
 Reines A. E., Volonteri M., 2015, *ApJ*, 813, 82
 Rezzolla L., Barausse E., Dorband E. N., Pollney D., Reisswig C., Seiler J., Husa S., 2008, *Phys. Rev. D*, 78, 044002
 Ricarte A., Natarajan P., 2018, *MNRAS*, 481, 3278
 Rodriguez-Gomez V. et al., 2015, *MNRAS*, 449, 49
 Ryu T., Perna R., Haiman Z., Ostriker J. P., Stone N. C., 2018, *MNRAS*, 473, 3410
 Salcido J., Bower R. G., Theuns T., McAlpine S., Schaller M., Crain R. A., Schaye J., Regan J., 2016, *MNRAS*, 463, 870
 Salpeter E. E., 1955, *ApJ*, 121, 161
 Sánchez-Janssen R. et al., 2019, *ApJ*, 878, 18
 Sayeb M., Blecha L., Kelley L. Z., Gerosa D., Kesden M., Thomas J., 2020, preprint (arXiv:2006.06647)
 Schaye J. et al., 2015, *MNRAS*, 446, 521
 Sesana A., 2013, *MNRAS*, 433, L1
 Sesana A., Khan F. M., 2015, *MNRAS*, 454, L66
 Sesana A., Haardt F., Madau P., Volonteri M., 2004, *ApJ*, 611, 623
 Sesana A., Haardt F., Madau P., Volonteri M., 2005, *ApJ*, 623, 23
 Sesana A., Volonteri M., Haardt F., 2007, *MNRAS*, 377, 1711
 Sesana A., Vecchio A., Colacino C. N., 2008, *MNRAS*, 390, 192
 Sesana A., Vecchio A., Volonteri M., 2009, *MNRAS*, 394, 2255
 Sesana A., Gair J., Berti E., Volonteri M., 2011, *Phys. Rev. D*, 83, 044036
 She R., Ho L. C., Feng H., 2017, *ApJ*, 842, 131
 Shi C. et al., 2019, *Phys. Rev. D*, 100, 044036
 Simon J., Burke-Spolaor S., 2016, *ApJ*, 826, 11
 Snyder G. F., Lotz J. M., Rodriguez-Gomez V., Guimarães R. da S., Torrey P., Hernquist L., 2017, *MNRAS*, 468, 207
 Steinborn L. K., Dolag K., Comerford J. M., Hirschmann M., Remus R.-S., Teklu A. F., 2016, *MNRAS*, 458, 1013
 Sutherland R. S., Dopita M. A., 1993, *ApJS*, 88, 253
 Taffoni G., Mayer L., Colpi M., Governato F., 2003, *MNRAS*, 341, 434
 Tanaka T., Haiman Z., 2009, *ApJ*, 696, 1798
 Teyssier R., 2002, *A&A*, 385, 337
 Trebitsch M., Volonteri M., Dubois Y., Madau P., 2018, *MNRAS*, 478, 5607
 Tremmel M., Governato F., Volonteri M., Quinn T. R., 2015, *MNRAS*, 451, 1868
 Tremmel M., Karcher M., Governato F., Volonteri M., Quinn T. R., Pontzen A., Anderson L., Bellovary J., 2017, *MNRAS*, 470, 1121
 Tremmel M., Governato F., Volonteri M., Quinn T. R., Pontzen A., 2018, *MNRAS*, 475, 4967
 Tweed D., Devriendt J., Blaizot J., Colombi S., Slyz A., 2009, *A&A*, 506, 647
 Valiante R., Schneider R., Volonteri M., Omukai K., 2016, *MNRAS*, 457, 3356
 van Wassenhove S., Volonteri M., Walker M. G., Gair J. R., 2010, *MNRAS*, 408, 1139

Van Wassenhove S., Volonteri M., Mayer L., Dotti M., Bellovary J., Callegari S., 2012, *ApJ*, 748, L7
 Van Wassenhove S., Capelo P. R., Volonteri M., Dotti M., Bellovary J. M., Mayer L., Governato F., 2014, *MNRAS*, 439, 474
 Vogelsberger M. et al., 2014, *MNRAS*, 444, 1518
 Volonteri M., Natarajan P., 2009, *MNRAS*, 400, 1911
 Volonteri M., Haardt F., Madau P., 2003, *ApJ*, 582, 559
 Volonteri M., Lodato G., Natarajan P., 2008, *MNRAS*, 383, 1079
 Volonteri M., Dubois Y., Pichon C., Devriendt J., 2016, *MNRAS*, 460, 2979
 Wyithe J. S. B., Loeb A., 2003, *ApJ*, 590, 691

APPENDIX A: EVOLVING BLACK HOLE AND BLACK HOLE PROPERTIES IN ESTIMATES OF THE DYNAMICAL FRICTION TIME-SCALE

One assumption made in our estimate of the dynamical friction time-scale t_{df} is that MBH and galaxy properties remain fixed after the time of the 'numerical' merger. In this section, we discuss the impact of this assumption using examples from NEWHORIZON.

After the MBHs are numerically merged at time t_{in} , their individual mass evolution is no longer tracked by the simulation. However, the new, 'numerically merged' MBH does continue to grow due to accretion. We record the values of the MBH individual masses and of the total mass of the pair at t_{in} , and compute the accretion rate on each MBH and on the numerically merged MBH using the BHL accretion rate:

$$\dot{M}_{\text{acc}} = \frac{G^2 M_{\text{in}}^2 \rho_{\text{gas}}}{(c_s^2 + v_{\text{rel}}^2)^{3/2}}, \quad (\text{A1})$$

where M_{in} is the mass of each MBH or of the numerically merged binary at t_{in} , c_s and ρ_{gas} are the sound speed and gas density in the vicinity of the numerically merged pair, and v_{rel} the relative velocity between gas and the MBH at t_{in} . In NEWHORIZON, the spatial resolution is high enough that no boost is included.

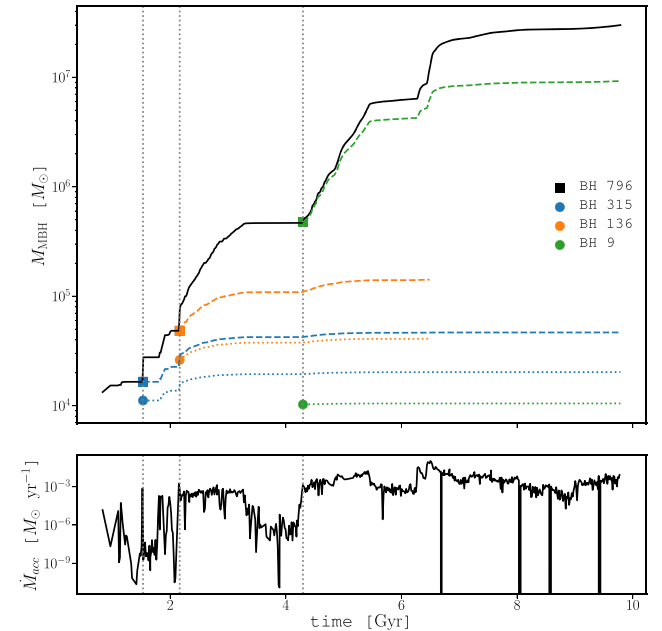


Figure A1. Top panel: Extrapolating MBH mass growth from the numerically merged MBH mass evolution (solid line), for primary (dashed lines) and secondary (dotted lines) MBHs during the first three mergers of MBH 796, for the timespan t_{in} to $t_{\text{in}} + t_{\text{df}}$, or until the end of the simulation. Bottom panel: Accretion rate of MBH 796 over time.

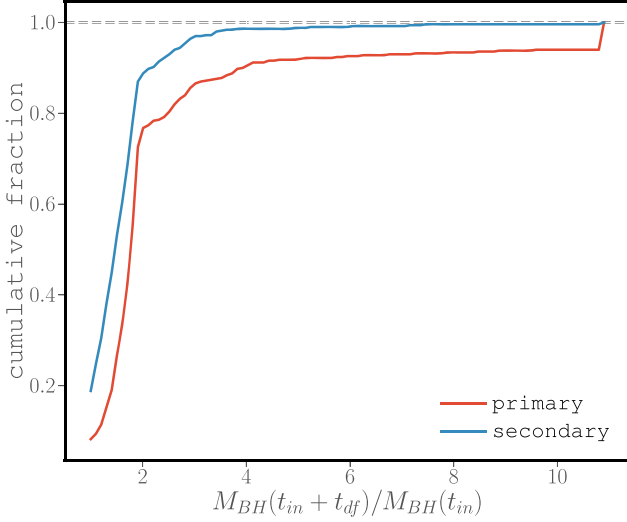


Figure A2. Cumulative distribution of mass increases during t_{df} , following all mergers in NEWHORIZON.

In Fig. A1, we show the post-processed mass evolution, using the first three mergers in which the primary is MBH 796 in NEWHORIZON, as an example. Each mass evolution is integrated from the time of the numerical merger, t_{in} until $t_{in} + t_{df}$, with the primary (dashed) and secondary (dotted) black hole tracked separately. Also shown is the mass evolution of the numerically merged MBH (solid line), from which the accretion rate (bottom panel) is calculated.

As can be seen in Fig. A1, the mass growth of both the primary (always 796, dashed lines) and the secondary MBHs (315, 136, and 9 respectively, dotted lines) from the point of numerical merger is small even over Gyr time-scales, if one assumes that the individual black holes continue growing at the local BHL accretion rate. Even the primary grows significantly more slowly without the mass boost provided during the numerical merger, due to the cumulative term of the M_{BH}^2 dependence of equation (A1).

Looking at the whole sample for NEWHORIZON, Fig A2 shows that for the majority of the sample, mass growth is small during t_{df} for both the primary and the secondary. For NEWHORIZON, 87 per cent (72.5 per cent) of secondary (primary) MBHs less than double their mass by t_{df} , while 98.8 per cent (91.8 per cent) gain less than a factor of 5 in mass. As this extra mass will accumulate progressively, the total mass gain during t_{df} sets an upper limit on how much t_{df} would vary if we had taken continuous mass growth into account. We therefore conclude that the impact of calculating t_{df} using the black hole masses at the time of numerical merger is small overall.

Conclusions are similar when studying the impact of evolving the galaxy stellar mass M_{gal} and velocity dispersion σ . From equation (1), the dynamical friction time t_{df} depends logarithmically on M_{gal} and thus very weakly on the stellar mass. The dependence is linear for σ , but the impact of growing σ is more difficult to quantify.

If to first approximation we describe the host galaxy as an isothermal sphere evolving toward higher masses and thus higher stellar velocity dispersion preserving spherical symmetry, no torque is acting on the MBH (treated as test particle), despite the change in σ , leading to the conservation of its specific angular momentum $\tilde{L} = r v_c$. Since the circular velocity $v_c = \sqrt{2}\sigma$ is independent of the enclosed mass and radius r , the orbiting MBH responds by reducing the radius r to compensate the increase in v_c required by the new dynamical equilibrium condition. Since the frictional

torque τ_{df} on a test mass in a circular orbit is equal to $\tau_{df} = -0.428GM_{BH}/r$, we can define a ‘reference’ dynamical friction time-scale $t_{df}^0 = 1.17r_0^2 v_{c,0}/(\ln \Lambda GM_{BH})$ for an MBH at distance r_0 with circular velocity $v_{c,0}$ in an unperturbed isothermal sphere (Binney & Tremaine 2008). If, as an example, we assume that the circular velocity increases exponentially, over a time-scale t_{gal} , i.e. $v_c(t) = v_{c,0} \exp(t/t_{gal})$, then the evolution equation for the radius $\dot{r}v_c + r\dot{v}_c = \tau_{df}$ leads to orbital decay down to $r = 0$ over a time-scale

$$t_{df} = t_{gal} \ln(1 + t_{df}^0/t_{gal}), \quad (A2)$$

which is always smaller than t_{df}^0/t_{gal} . Likewise, if we consider a power-law increase in σ and thus in the circular velocity of the form $v_c = v_{c,0}(1 + t/t_{gal})^\beta$, orbital decay to $r = 0$ occurs on a time-scale

$$t_{df} = t_{gal} \left[\left(1 + (\beta + 1) \frac{t_{df}^0}{t_{gal}} \right)^{1/(\beta+1)} - 1 \right], \quad (A3)$$

which for $\beta > 0$ implies again values of the dynamical friction time smaller than t_{df}^0/t_{gal} .

If t_{df}^0 is short compared to t_{gal} , the evolution of the host galaxy properties during this time will be negligible, and $t_{df} \sim t_{df}^0$. Otherwise its value is determined by the time-scale t_{gal} over which v_c and accordingly σ increase. Thus, t_{df}^0 gives an upper limit on the dynamical friction time-scale, in this simplified toy model. Since, even assuming galaxies can be described as isothermal spheres, the mass growth of individual galaxies in time generally does not follow a simple analytical expression, we refrain from implementing an arbitrary general correction to the dynamical friction time-scale. We therefore calculate all values of t_{df} using the MBH and galaxy properties at the time of numerical merger. Furthermore, if most of the galaxy growth is through the accretion of gas with large angular momentum, which forms extended discs, the properties of the central regions of the galaxies should be little affected, which also means that the dynamical friction time-scales of the MBH should not greatly be affected even if the galaxy grows significantly.

APPENDIX B: STELLAR DENSITY AND BINARY HARDENING

In the body of the paper, we have shown results for binary evolution time-scale when the central stellar density profile of galaxies is modelled as a power law with $\gamma = 2$ (isothermal sphere). We show in Fig. B1, $t_{bin,h}$ and ρ_{inf} for $\gamma = 2$ and $\gamma = 1$, recalling that

$$r_{inf} = R_{eff} \left(\frac{4M_{BH}}{M_{gal}} \right)^{1/(3-\gamma)} \quad (B1)$$

and

$$\rho_{inf} = \frac{(3-\gamma)M_{gal}r_{inf}^{-\gamma}}{8\pi R_{eff}^{3-\gamma}}. \quad (B2)$$

We compare with ρ_{inf} estimated by Pfister et al. (2020) using a Prugniel profile (Prugniel & Simien 1997), for a sample of 45 nearby galaxies with measured MBH mass and bulge properties (filled pentagons), some of them including also a nuclear star cluster (empty pentagons) as well as the density at 10 pc estimated by Faber et al. (1997) on a sample of 46 elliptical galaxies using a Nuker profile (Lauer et al. 1995); for these elliptical galaxies we assume that the MBH mass is 10^{-3} the mass of the galaxy (violet triangles). The inner 3D logarithmic slope is by construction < 1 for a Prugniel profile while the deprojected Nuker profile allows for larger values.

The densities estimated with $\gamma = 2$ are in good agreement with observations for HORIZON-AGN, while for NEWHORIZON they could

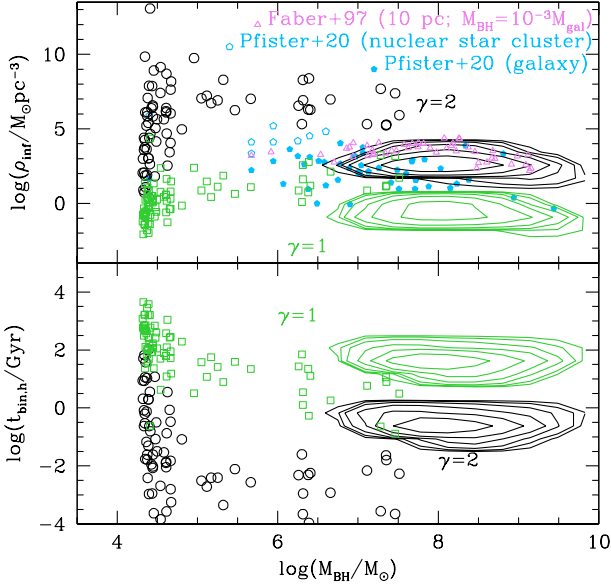


Figure B1. Stellar density at the MBH sphere of influence (top) and binary hardening time-scales (bottom) for MBHs in NEWHORIZON (black circles for $\gamma = 2$ and green squares for $\gamma = 1$) and HORIZON-AGN (black and green contours for $\gamma = 2$ and $\gamma = 1$, respectively). The estimates for nearby galaxies are from Faber et al. (1997) and Pfister et al. (2020), see text for details.

be higher than the values of $z = 0$ MBHs, although this is not completely clear: on the one hand the 10 pc radius used in Faber et al. (1997) is much larger than r_{inf} for NEWHORIZON MBHs, on the other hand the Prugniel profile used in Pfister et al. (2020) has by construction a shallow inner slope. In any case, the higher densities in NEWHORIZON compared to HORIZON-AGN is a result of the MBHs being lighter in NEWHORIZON than in HORIZON-AGN at fixed galaxy mass (see equations B1 and B2), and of galaxies in NEWHORIZON being more compact, i.e. having smaller R_{eff} at a given M_{gal} .

APPENDIX C: REMOVING SPURIOUS MERGERS

To identify possible spurious numerical mergers, we selected MBHs within $\max(2R_{\text{eff}}, 4\Delta x)$ ('sel'), at each step, i.e. this condition was applied at the time of the numerical merger (t_{in}), after the dynamical friction time-scale ($t_{\text{in}} + t_{\text{df}}$), and after the binary evolution time-scale ($t_{\text{in}} + t_{\text{df}} + t_{\text{bin}}$).

We here discuss alternative choices for the criterion at the same times: (i) pairs where the MBHs are within $8\Delta x$ from the centre of the nearest galaxy ('8dx') at the time of the numerical merger, (ii) MBHs within $\max(0.5R_{\text{eff}}, 4\Delta x)$ ('05Reff'). In NEWHORIZON, these catalogues contain 43 and 81 MBHs, and in HORIZON-AGN 18 500 and 1329 MBHs. Note that catalogue 05Reff is a subset of sel, but catalogue 8dx is not necessarily a subset of any of the two: in high-redshift galaxies, R_{eff} can be smaller than $8\Delta x$, especially in the case of HORIZON-AGN, while the opposite is true for massive, large low-redshift galaxies. A numerical size, $8dx$, instead of a physical galaxy size can be useful at early cosmic times, when galaxies are very 'messy' and defining the galaxy centre challenging.

We show in Fig. C1, the MBH merger rates resulting from these alternative catalogues. The merger rate for catalogue 8dx at later times converges towards that of sel for HORIZON-AGN and 05Reff for NEWHORIZON. The reason is that $8\Delta x$ represents very different physical scales for the two simulations, 8 kpc and 320 pc, the former closer to the full extent of massive ($M_* > 10^{11} M_{\odot}$) low-redshift galaxies (Dubois et al. 2016) and the latter closer to the size of the central region, somewhat smaller than typical bulge sizes.

The other results of the paper are not very different if we consider 05Reff instead of sel, except for the obvious smaller number of MBHs. We note only that the masses of merging galaxies sourcing MBH mergers in 05Reff are somewhat larger than in sel, 0.3 dex in HORIZON-AGN and 0.62 dex in NEWHORIZON. MBHs are more centrally located in more massive galaxies, which have a smoother and deeper potential wells.

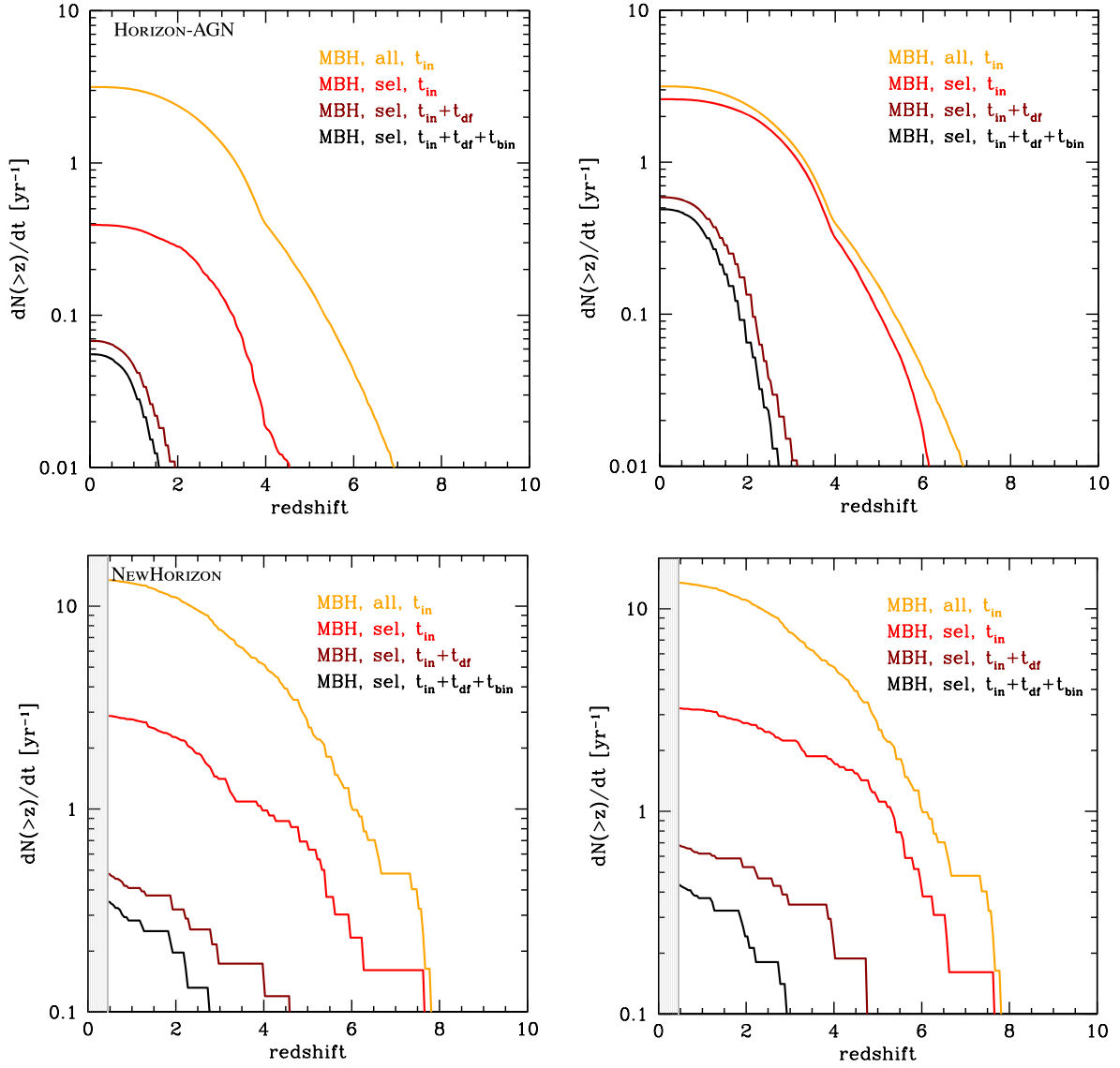


Figure C1. Analogue of Fig. 5 but for catalogues *05Reff* and *8dx*, from left to right.

This paper has been typeset from a \LaTeX file prepared by the author.