



## Assessing the phenotypic and genotypic diversity of *Sclerotinia sclerotiorum* in France

Christel Leyronas, Marc Bardin, Karine Berthier, Magali Duffaud, Claire Troulet, Marie Torres, François Villeneuve, Philippe C. Nicot

### ► To cite this version:

Christel Leyronas, Marc Bardin, Karine Berthier, Magali Duffaud, Claire Troulet, et al.. Assessing the phenotypic and genotypic diversity of *Sclerotinia sclerotiorum* in France. *European Journal of Plant Pathology*, 2018, 152 (4), pp.933-944. 10.1007/s10658-018-1493-9 . hal-02623334

**HAL Id: hal-02623334**

**<https://hal.inrae.fr/hal-02623334>**

Submitted on 8 Feb 2022

**HAL** is a multi-disciplinary open access archive for the deposit and dissemination of scientific research documents, whether they are published or not. The documents may come from teaching and research institutions in France or abroad, or from public or private research centers.

L'archive ouverte pluridisciplinaire **HAL**, est destinée au dépôt et à la diffusion de documents scientifiques de niveau recherche, publiés ou non, émanant des établissements d'enseignement et de recherche français ou étrangers, des laboratoires publics ou privés.



Distributed under a Creative Commons Attribution - NonCommercial - NoDerivatives 4.0 International License

**Assessing the phenotypic and genotypic diversity of *Sclerotinia sclerotiorum* in France**

Christel Leyronas, Marc Bardin, Karine Berthier, Magali Duffaud, Claire Troulet, Marie Torres,  
François Villeneuve, Philippe C. Nicot

C. Leyronas (✉), M. Bardin, K. Berthier, M. Duffaud, C. Troulet, P.C. Nicot

Pathologie Végétale, INRA, 84140, Montfavet, France

e-mail : christel.leyronas@inra.fr

Tel. 00 33 432 722 867

F. Villeneuve

Ctifl, Centre de Lanxade, 24130 Prignonrieux, France

M. Torres

Ctifl, Centre de Balandran, 30127 Bellegarde, France

**Acknowledgments**

This study was supported in part by a CASDAR grant of the French Ministry of Agriculture (SCLEROLEG Project) and by the Groupement d'Intérêt Scientifique pour la Production Intégrée des Cultures légumières" (GIS PIClég). The authors thank all the field experimenters of the technical institutes (ACPEL, APEF, CEFEL, INVENIO, Terres Inovia, SILEBAN, UNILET) who collaborated in the project and who collected the isolates used in the present study.

## Abstract

White mould caused by the ascomycete *Sclerotinia sclerotiorum* affects the production of many economically important crops. The incidence of this disease has recently increased in France, especially in melon crops, which were not affected much in the past. One possible explanation for this situation is the emergence of strains with particular characteristics, including increased aggressiveness to melon. To test this hypothesis, 200 isolates of *S. sclerotiorum* were collected from six host crops (bean, brassica oilseed rape, carrot, lettuce, melon, witloof chicory) in different regions. They were genotyped with 16 microsatellites markers. A subsample of 96 isolates were assessed for their aggressiveness on melon leaves. Overall, the isolates from melon did not show higher aggressiveness on melon leaves than those which originated from other host plants. Moreover, the melon isolates did not present distinctive genetic characteristics in comparison with those from other crops and shared several of the 128 identified multilocus haplotypes with isolates collected from carrot, witloof chicory and oilseed rape. Furthermore the Bayesian analysis of the genetic structure indicated that the host plant is not a structuring factor of the three genetic clusters identified, and it suggested instead the occurrence of an isolation-by-distance process. Possible consequences of these results for the management of white mould and alternative hypotheses to explain the recent changes in disease incidence are presented.

## Key words

White mould, microsatellites, aggressiveness, vegetable, melon

## Introduction

*Sclerotinia sclerotiorum* (Lib) de Bary causes annual crop losses up to several millions of dollars worldwide (Petrofeza and Nasser 2012). This plant pathogenic ascomycete can attack

more than 400 plant species (Purdy 1979; Boland and Hall 1994), including some with economic importance such as oilseed and protein crops and vegetables. In many crops, disease management relies largely on fungicide applications that are guided by risk-prediction models (Clarkson et al. 2014; Lehner et al. 2017), but biological control and preventive cultural methods also play an important role (Barriere et al 2014; Derbyshire and Denton-Giles 2016; Elsheshtawi et al 2017; Kamal et al. 2016; Nicot et al. 2016). Such cultural methods include crop rotation or the spatial arrangement of plots with host crops and non-host crops. However, designing strategies of rotation or landscape use is complicated by the wide host range of the pathogen and the long survival of sclerotia in the soil (Derbyshire and Denton-Giles 2016). Sclerotia can be abundant in the soil and lead either to direct plant infection through myceliogenic germination or to production of ascospores through carpogenic germination (Steadman 1983). Ascospores can be dispersed by wind and thus disseminate the pathogen within and among fields (Kora et al. 2003).

In recent years, French fruit and vegetable growers have been confronted to an increase in white mould incidence, particularly in melon crops which were largely spared in the past. The reasons for this change are not known. As a possible explanation, we hypothesised that isolates with increased aggressiveness on melon may have become prevalent in the production area. Little is known on possible differences in aggressiveness to various host crops among populations of *S. sclerotiorum*, but significant levels of diversity were reported among 120 isolates from Australia examined for their aggressiveness to sunflower (Ekins et al. 2007). In *Botrytis cinerea*, a taxonomically related species also known for its wide host range (Elad et al. 2016), some level of adaptation to the host plant has been suggested, with a clear genetic differentiation according to the host plant of origin among 3546 isolates collected in France from three plant species (Walker et al. 2015a). While no information is available on French populations of *S. sclerotiorum*, some cases of genetic differentiation, and even possibly divergence into separate

populations, have been reported in several studies (Aldrich-Wolfe et al. 2015; Clarkson et al. 2013; Malvárez et al. 2007).

The objectives of the present study were to test the hypothesis that French isolates of *S. sclerotiorum* found on melon may be phenotypically and genetically different from those isolated from other crops. For this, we examined a large collection of *S. sclerotiorum* isolates sampled from different host crops, some of which are traditionally cultivated in close vicinity or in rotation with melon.

## Materials and methods

### Isolate collection

Two hundred isolates were collected as sclerotia present on diseased plants in crops of carrot (*Daucus carota* L.), melon (*Cucumis melo* L.), bean (*Phaseolus vulgaris* L.), oilseed rape (*Brassica napus* L.), witloof chicory (*Cichorium intybus* var. *foliosum* L.) and lettuce (*Lactuca sativa* L.) from different regions of France (Fig. 1). The sclerotia were surface-disinfested with bleach (5%) and rinsed in sterile water. They were then plated on Potato Dextrose Agar (PDA) and incubated for two days at 21°C. A mycelial plug carrying a single piece of hyphal tip was excised from the growing margin of each colony and transferred to fresh PDA medium, as described for the characterization of individual isolates in population genetic studies (Lehner et al. 2016). After four days of incubation, the mycelium was collected from the surface of the agar medium and stored at -20°C before DNA extraction.

### Characterization of the aggressiveness of isolates on melon

The aggressiveness of a subsample of 96 isolates of *S. sclerotiorum* was assessed on detached leaves of melon in controlled conditions. These isolates were chosen among the 200 isolates collected on diseased plants, based on their host of isolation (21 isolates from green bean, 11

from oilseed rape, 25 from carrot, 28 from melon and 11 from witloof chicory) and their suitability to represent different haplotypes characterized as described below. The melon cultivar Chubaka (Nunhems Bayer CropScience, France) was chosen because of its susceptibility to *S. sclerotiorum*. Seeds were sowed in compost (Klasmann TS3, Germany). Plants were produced in a heated greenhouse and watered daily with a nutrient solution (Soluveg Essentiel, Angibaud Derome & Spécialités, France). The potted plants were used at the 3–4 leaf stage after 4 weeks of culture. Two leaves per plant were detached and placed in clear polystyrene boxes (250 mm × 178 mm) on moistened filter paper. Mycelial plugs (5 mm in diameter) of each *S. sclerotiorum* isolate were excised from the growing margin of two day-old PDA cultures and deposited onto the melon leaves. Each *S. sclerotiorum* isolate was inoculated on 10 leaves (5 plastic boxes). The plastic boxes were then incubated in a growth chamber at 21°C and a photoperiod of 14 hours for 48 hours. The leaves were then photographed and lesion areas were assessed with image analysis software (Image J, US National Institutes of Health, Bethesda, USA). To compare the aggressiveness of *S. sclerotiorum* isolates, these figures were used to compute an aggressiveness index, expressed as a percentage relative to the size of lesions for a reference isolate (SS44, isolated from melon).

#### Isolate genotyping

Genomic DNA was extracted in 96-well plates from aliquots of 100 mg (fresh weight) of frozen fungal material, following the Dneasy Plant extraction Kit protocol (Qiagen). Sixteen microsatellite markers designed for *S. sclerotiorum* by Sirjusingh and Kohn (2001) were amplified with forward primers conjugated with the following fluorescent dyes: FAM for loci 5-3, 7-2, 7-3, 8-3, 12-2, 13-2, 17-3, 36-4, 42-4, 55-4, 92-4, 106-4 and HEX for loci 5-2, 9-2, 110-4 and 114-4 (MWG). Reverse primers did not carry any fluorescent dye. All markers were amplified at a hybridization temperature of 55°C, except 8-3, 42-4, 55-4 and 92-4 which were

amplified at 60°C. To determine the size of the microsatellites, the PCR products were diluted and multiplexed prior to scanning with the help of an ABI 3730 sequencer (Applied Biosystems). The multiplexing consisted of mixing in a same well the PCR products of several markers. The markers were separated in three mixes: one for markers 7-2, 12-2, 13-2, 36-4, 106-4 and 114-4, a second one for markers 7-3, 8-3, 9-2, 17-3 and 42-4 and a third one for 5-2, 5-3, 55-4 92-4, and 110-4. In each well, 600LIZ was used as a standard size marker. GeneMapper software version 4.1 (Applied Biosystems) was then used for the microsatellite size analysis. Complete microsatellite size profiles (referred to as "haplotypes" hereafter) were obtained for all isolates.

#### Genetic diversity of *S. sclerotiorum* isolates

Unbiased gene diversity (Hnb) and unbiased allelic richness were computed separately for the isolates collected on every plant species with the Genetix software (Belkhir 1996-2004). The number of different multilocus haplotypes (MLH) was computed with GenClone 1.0 software (Arnaud-Haond and Belkhir 2007). We used the index of haplotypic diversity (based on the number of individuals and the number of distinct MLH), which estimates the proportion of haplotypes present in a population and takes a value of 1 when a population is composed exclusively of unique haplotypes (Arnaud-Haond et al. 2007).

To assess the possible exchange of inoculum between crops often cultivated in rotation or in close vicinity, a separate analysis was carried out on a subsample of 124 isolates (40 from melon and 84 from carrot) collected between October 2014 and January 2016 in two adjacent districts (Gironde and Charente-Maritime) in southwestern France (Fig. 1). The software FSTAT version 2.9.3 (Goudet 1995) was used to compute allelic richness per locus corrected for a minimum sample size of 40 isolates.

## Genetic structure

To investigate the genetic structure of *S. sclerotiorum* isolates we used the discriminant analysis of principal components (DAPC) implemented in the R package adegenet (Jombart 2008; Jombart et al. 2010). DAPC requires prior genetic groups that can be either determined by users or defined without any a priori on sample assignments using a k-means clustering approach. To avoid possible bias, only one representative was kept for isolates which presented an identical haplotype and were collected from a same plot, resulting in a group of 141 isolates included in the analysis. First, we tested for a potential host specialization of *S. sclerotiorum* by assigning the isolates to six distinct clusters corresponding to the host species from which they have been sampled. As *S. sclerotiorum* may be structured by other factors than the host plant, such as geography, we also performed a DAPC without any assumption on the genetic structure. In this case, we first identified the optimal number of clusters in our data set, using the k-mean clustering approach implemented in adegenet. The best clustering solution was determined, using Bayesian Information Criterion (BIC). We used the optimisation procedure implemented in adegenet to select the optimal number of principal components to be retained in the DAPC analyses (Jombart et al., 2010). The distribution of isolates among clusters and their probability of assignation were analysed. An isolate was considered as accurately assigned to a cluster when its membership probability was greater than 0.8. The level of genetic differentiation between the identified clusters was assessed by computing Weir & Cockerham's  $F_{ST}$  values using the software Arlequin version 3.5 (Excoffier et al. 2005). To further investigate the genetic structure resulting from the assumption-free DAPC analysis, a multivariate analysis was conducted using the dudi.hillsmith function from the R package "ade4". The analysis was performed by considering for each isolate: the cluster number as a factor and the year of sampling as well as the geographic coordinates as continuous variables to consider both temporal and spatial genetic structure. Finally, a test for isolation-by-distance was conducted



using the R package “genepop” (Rousset 2008). The analysis was performed using the a-like statistics as pairwise genetic distance, the logarithm of the geographic distance, a minimal distance of 10 meters between isolates to exclude pairs sampled within the same field and 10000 permutations for the Mantel test between genetic and geographic distance matrix. As the sampling size varied among the plots with quite an over representation of south-western France, due to two highly sampled localities, we also performed the clustering, multivariate and isolation-by-distance analyses on 10 subsampled datasets. These 10 datasets included only one isolate from each plot. Isolates from the most represented plots were different among the 10 sub-samplings.

## Statistical analyses

Statistical analyses were performed with Statistica (version 12, Statsoft). Non-parametric tests were used to determine significant differences between gene diversity and allelic richness, of carrot and melon isolates (Mann and Whitney). As normality test indicates that aggressiveness indices of *S. sclerotiorum* isolates are not normally distributed (Lilliefors normality test,  $P < 0.0001$ ), we carried out a non-parametric analysis of variance (Kruskal-Wallis test) to evaluate an isolate effect. In order to test the significance of the association between the level of aggressiveness of isolates and their plant of origin, a non-parametric analysis of variance (Kruskal-Wallis test) was realized. Data are reported in the text as mean values  $\pm$  standard error of the mean. Statistical inferences were made at the 5 % level of significance, unless indicated otherwise.

## Results

### Aggressiveness on melon

All tested isolates of *S. sclerotiorum* were able to cause symptoms on detached leaves of melon, regardless of their host of origin. However, they displayed a wide range of aggressiveness (Fig 2), with significant differences among isolates ( $P_{\text{Kruskal-Wallis}} < 0.05$ ). When grouped according to their host of origin, the relative aggressiveness of isolates from melon was not higher than that of others (Fig 3) and no significant differences were found between groups ( $P_{\text{Kruskal-Wallis}} = 0.19$ ).

#### Overall genetic diversity of *S. sclerotiorum* isolates

Among the 16 markers used to characterize the 200 isolates, one (locus 36-4) was monomorphic, showing a single 411 pb allele, while all others were polymorphic with a number of alleles ranging from 3 (for locus 12-2) to 24 (for locus 106-4) (Table 1). A total of 128 different multilocus haplotypes (MLH) were identified (Table 2), among which 35 were represented by at least 2 isolates. The most frequent MLH was represented by 8 isolates (all from carrot) but 10 of the MLH in multicopies were represented by isolates collected from different host plants, including melon (Fig. 4). Isolates from melon shared haplotypes with isolates from carrots (4 haplotypes), oilseed rape (3 haplotypes) and witloof chicory (2 haplotypes) but not with isolates from bean or lettuce. The geographic distance between the collection sites of two isolates sharing the same haplotype could be up to 700 km, as for example melon isolates collected in the South West and witloof chicory isolates collected in the North of France (MLH 2 and 34 in Fig. 4).

The values of gene diversity were in the same range (0.52 to 0.55) for the isolates collected from the 6 different host crops (Table 2). In contrast, haplotypic diversity values showed greater variation. The carrot isolates had the lowest haplotypic diversity (0.57) and oilseed rape isolates had the highest (1.0) as they all had a different haplotype.

## Regional focus on melon and carrot isolates

The group of melon isolates and that of carrot isolates from the two adjacent southwestern districts of France were not markedly differentiated on the basis of genetic diversity (Table 3). There was no significant difference of allelic richness and gene diversity between carrot isolates and melon isolates ( $P_{\text{Mann\&Whitney}} = 0.67$  and  $P = 0.86$  respectively). The two groups of isolates shared three haplotypes. One haplotype (MLH 2 in Fig. 4) was shared by 2 melon isolates collected in spring 2014 and 3 carrot isolates collected in autumn 2014, one (MLH 4) was shared by melon isolates collected in spring 2014 and carrot isolates collected in autumn 2014 and 2015 and the third haplotype (MLH 32) was shared by a melon isolate collected in spring 2014 and a carrot isolate collected in spring 2015. The group of melon isolates and that of carrot isolates were significantly ( $P < 0.05$ ) but very slightly genetically differentiated, with  $F_{ST}$  values respectively of 0.029 and 0.019 for the complete data and for the clone-corrected data.

## Genetic structure

When the DAPC was performed on six a priori groups corresponding to host plants, only 22 isolates, out of the 141 included in the analysis, were assigned to one of the six clusters with a posterior probability greater than 0.8. Among those 22 isolates, 19 were assigned to the cluster corresponding to the host species from which they have been sampled. To run the DAPC without assumption about the factors shaping the genetic structure of *S. sclerotiorum*, we first determined the optimal number of groups in our data using a k-means clustering analysis with a maximum number of clusters fixed to 10. The BIC associated to each clustering solution showed a rapid decrease and a sharp elbow at  $K=3$ , which gives very low support to higher clustering solutions. For  $K=3$ , all isolates were assigned to one of the three clusters with a posterior probability equal to 1 (Fig. 5). These three clusters were significantly differentiated ( $P < 0.001$ ) with  $F_{ST}$  values reaching 0.25-0.28. Results of the multivariate analysis suggested

that *S. sclerotiorum* isolates were somewhat geographically structured with a rough gradient-like pattern from Northwest, where more isolates from cluster 1 were found, to Southeast where isolates from cluster 3 were more frequent (Online resource 1). Isolates from cluster 2 were more evenly distributed across space. This pattern suggests that the three genetic clusters retrieved by the DAPC analysis reflect an isolation-by-distance process as supported by the result of the Mantel test conducted on genetic and geographic distances (Mantel test p-value = 0.0145; slope estimate = 0.030 - CI<sub>95%</sub>[0.019-0.046]; Online resource 2).

When analysing the 10 subsampled datasets, we still found that the optimal clustering solution was K=3 in all cases. Although the decrease in the sampling size decreased the power of the multivariate analysis, results from the 10 subsampled datasets still suggested a trend for a longitudinal gradient with isolates from cluster 1 being mostly located West while cluster 3 appeared most represented in the west and cluster 2 more evenly distributed across space (Online resource 1). As for the complete dataset, Mantel tests between genetic and geographic distances were significant for nine of the subsampled datasets (p-values ranged from 0.001 to 0.01). Although not significant, the Mantel test for the 10<sup>th</sup> subsampled dataset also showed a clear trend for an isolation by distance pattern (p-value = 0.097).

## Discussion

The present study was initiated to test the hypothesis that *S. sclerotiorum* isolates collected from melon may be differentiated from isolates collected from other host crops. To our knowledge, this was the first investigation of the genetic characteristics of this pathogen in France and the first to provide data on isolates collected from melon and from witloof chicory.

Overall, our results did not provide any support for the original hypothesis. The isolates from melon did not show higher aggressiveness on melon leaves than those which originated from other host plants, and they did not present distinctive genetic characteristics. The genetic

structure of the isolates was clearly not influenced by their host plant of origin, as more than 84% of them failed to be assigned to host-based a priori clusters in the discriminant analysis of principal components.

In general, the genetic properties of French isolates of *S. sclerotiorum* were comparable to those previously reported in studies where microsatellite markers were used (Table 4). In the present study, only one microsatellite locus (36-4) among the 15 used for isolate genotyping showed a single allele for all isolates and 17.5% of multilocus haplotypes were shared by at least two isolates. Among those shared haplotypes, nearly one third concerned isolates collected on different host crops, including melon. This is consistent with previous reports that MLH of *S. sclerotiorum* were shared between isolates from various crops in Iran (Hemmati et al. 2009), the UK (Clarkson et al. 2013; 2017) and the USA (Aldrich-Wolfe et al. 2015). In these studies, the distance between sampling sites could reach several hundred kilometres. This was also the case in the present study, with haplotypes shared by isolates collected up to 700 km apart.

The specific comparison of melon and carrot isolates from adjacent districts of southwestern France has cast further doubts on the original hypothesis of the present study. It showed that the two crops, often cultivated in rotation or in close vicinity in that region, could be infected by isolates with identical MLH at periods separated by several months, suggesting the exchange of inoculum in time and space at a scale of 100 km. When considering isolates at a national scale, however, both the discriminant analysis of principal components and the Mantel test revealed some level of geographic structure, likely to result from an isolation-by-distance process.

All these findings have implications for the management of white mould. Rotation strategies for the management of white mould could be complicated by possible long distance transport of inoculum. Although specific information is lacking for airborne inoculum *S. sclerotiorum*, viable fungal spores have been recovered at large distances from their sources (Brown and

301 Hovmøller 2002). Our results suggest that the elaboration of rotation schemes should be  
302 adapted according to the geographic scale of inoculum transport. As ascospores of *S.*  
303 *sclerotiorum* are anemophilic and may be largely responsible for inoculum dissemination  
304 (Abawi and Grogan 1979), further work should focus on the trajectories of air masses between  
305 production areas and their possible role in inoculum transport. Our results may also be relevant  
306 for chemical control of white mould. Fungicide resistance of *S. sclerotiorum* is increasingly  
307 reported in oilseed rape production in various countries, including France (Derbyshire and  
308 Denton-Giles 2016; Kaczmar et al. 2000; Lehner et al. 2015; Walker et al. 2015b; Zhu et al.  
309 2016) and its management is likely to be complicated by inoculum dissemination both in oilseed  
310 rape and in a variety of other host crops. All the more so as the active substances are often  
311 registered for white mould control in several crops (including melon) in addition to oilseed rape.  
312 Clearly, melon could not be used as a low-risk alternative crop in rotation strategies to manage  
313 white mould and the recent increase in disease incidence in French melon production may not  
314 be explained by the emergence of a distinct “melon” isolate. Other hypotheses need to be  
315 considered, including a possible role of the substantial increase in the frequency of fungicide-  
316 resistant isolates documented in France in recent years (Walker et al. 2015b), which results in  
317 a reduction of control efficacy in the field. An increase in the acreage of susceptible crops (eg  
318 oilseed rape) in the South- and Center-West of France, together with decreased rotation time  
319 between susceptible crops, may also have played a role. Melon crops themselves may be  
320 substantial contributors of inoculum, as moulded fruits are not picked at harvest. If left to rot  
321 in the field, these fruits are likely to produce large numbers of sclerotia which could then  
322 contribute to the soil inoculum load for the following crops over several years and possibly for  
323 crops in neighbouring plots. In this context, it could be particularly valuable to implement  
324 measures that reduce the amount of inoculum released on the soil by diseased plants, through

the removal of rotten melons after harvest or through the application of biocontrol agents capable of destroying freshly produced sclerotia.

## **Compliance with ethical standards**

The research presented in this paper was supported in part by a CASDAR grant of the French Ministry of Agriculture (SCLEROLEG Project) and by the Groupement d'Intérêt Scientifique pour la Production Intégrée des Cultures légumières" (GIS PIClég).

The authors declare that this research was performed according to the ethical standards.

The authors declare to have no conflict of interest.

The research did not involve human participants and/or animals.

All the authors agreed to submit this manuscript in this current version.

## **References**

Abawi, G.S., & Grogan, R.G. (1979). Epidemiology of diseases caused by *Sclerotinia* species. *Phytopathology*, 69, 899-904.

Aldrich-Wolfe, L., Travers, S., & Nelson, B.D.Jr. (2015). Genetic variation of *Sclerotinia sclerotiorum* from multiple crops in the north central United States. *PLoS One*, doi:10.1371/journal.pone.0139188

Arnaud-Haond, S., & Belkhir, K. (2007). Genclone: a computer program to analyse genotypic data, test for clonality and describe spatial clonal organization. *Molecular Ecology Notes*, 7, 15-17.

Arnaud-Haond, S., Duarte, C.M., Alberto, F., & Serrao, E.A. (2007). Standardizing methods to address clonality in population studies. *Molecular Ecology*, 16, 5115-39.

Atallah, Z.K., Larget, B., Chen, X., & Johnson, D. A. (2004). High genetic diversity, phenotypic uniformity, and evidence of outcrossing in *Sclerotinia sclerotiorum* in the Columbia Basin of Washington State. *Phytopathology*, 94, 737-742.

Attanayake, R.N., Carter, P.A., Jiang, D., del Río-Mendoza, L., & Chen, W. (2013). *Sclerotinia sclerotiorum* populations infecting canola from China and the United States are genetically and phenotypically distinct. *Phytopathology*, 103, 750-761.

Barriere, V., Lecompte, F., Nicot, P.C., Maisonneuve, B., Tchamitchian, M., & Lescourret, F. (2014). Lettuce cropping with less pesticides. A review. *Agronomy for Sustainable Development*, 34, 175-198.

Barari, H., Alavi, V., & Badalyan, S.M. (2010). Genetic and morphological diversities in *Sclerotinia sclerotiorum* isolates in northern parts of Iran. *World Applied Sciences Journal*, 8, 326-333.

Belkhir, K., Borsa, P., Chikhi, L., Raufaste, N., & Bonhomme, F. (1996–2004). Genetix 4.05, logiciel sous Windows TM pour la génétique des populations. Laboratoire Génome, Populations, Interactions, CNRS UMR 5171, Université de Montpellier, Montpellier, France. [WWW document]. URL <http://www.genetix.univ-montp2.fr/genetix/intro.htm>.



374 Boland, G. J., & Hall, R. (1994). Index of plant hosts of *Sclerotinia sclerotiorum*. *Canadian*  
375 *Journal of Plant Pathology*, 16, 93-108.

376

377 Brown, J.K.M., & Hovmøller, M.S. (2002) Aerial dispersal of pathogens on the global and  
378 continental scales and its impact on plant disease. *Science*, 297, 537-541.

379

380 Clarkson, J.P., Fawcett, L., Anthony, S.G., & Young, C. (2014). A model for *Sclerotinia*  
381 *sclerotiorum* infection and disease development in lettuce, based on the effects of temperature,  
382 relative humidity and ascospore density. *PLoS ONE*, doi:10.1371/journal.pone.0094049

383

384 Clarkson, J.P., Coventry, E., Kitchen, J., Carter, H.E., & Whipps, J.M. (2013). Population  
385 structure of *Sclerotinia sclerotiorum* in crop and wild hosts in the UK. *Plant Pathology*, 62,  
386 309-324.

387

388 Clarkson, J.P., Warmington, R., Walley, P.G., Denton-Giles, M., Barbetti, M.J., Brodal, G., &  
389 Nordskog, B. (2017). Population structure of *Sclerotinia subarctica* and *Sclerotinia*  
390 *sclerotiorum* in England, Scotland and Norway. *Frontiers in Microbiology* doi:  
391 10.3389/fmicb.2017.00490

392

393 Derbyshire, M.C., & Denton-Giles, M. (2016). The control of *sclerotinia* stem rot on oilseed  
394 rape (*Brassica napus*): current practices and future opportunities. *Plant Pathology*, 65, 859-  
395 877.

396

397 Dunn, A.R., Kikkert, J.R., & Pethybridge, S.J. (2017). Genotypic characteristics in populations  
 398 of *Sclerotinia sclerotiorum* from New York State, USA. *Annals of Applied Biology*, doi:  
 399 10.1111/aab.12330  
 400

401 Ekins, M.G., Aitken, E.A.B., & Goulter, K.C. (2007). Aggressiveness among isolates of  
 402 *Sclerotinia sclerotiorum* from sunflower. *Australasian Plant Pathology*, 36, 580-586.  
 403

404 Elad, Y., Pertot, I., Cotes Prado, A.M., & Stewart, A. (2016). Plant hosts of *Botrytis* spp. In:  
 405 S. Fillinger and Y. Elad (Eds), *Botrytis-the fungus, the pathogen and its management in*  
 406 *agricultural systems* (pp, 413-486). Dordrecht: Springer.  
 407

408 Elsheshtawi, M., Elkhaky, M.T., Sayed, S.R., Bahkali, A.H., Mohammed, A.A., Gambhir, D.,  
 409 Mansour, A.S., & Elgorban, A.M. (2017). Integrated control of white rot disease on beans  
 410 caused by *Sclerotinia sclerotiorum* using Contans ® and reduced fungicides application. *Saudi*  
 411 *Journal of Biological Sciences*, 24, 405-409.  
 412

413 Excoffier, L., Laval, G., & Schneider, S. (2005). Arlequin ver. 3.0: An integrated software  
 414 package for population genetics data analysis. *Evolutionary Bioinformatics Online* 1: 47-50.  
 415

416 Gomes, E. V., do Nascimento, L. B., de Freitas, M. A., Nasser, L. C. B., & Petrofeza, S. (2011).  
 417 Microsatellite markers reveal genetic variation within *Sclerotinia sclerotiorum* populations in  
 418 irrigated dry bean crops in Brazil. *Journal of Phytopathology*, 159, 94-99.  
 419

420 Goudet, J. (1995). FSTAT (Vers.1.2): a computer program to calculate F-statistics. *Journal of*  
 421 *Heredity*, 86, 485-86.

422

423 Hemmati, R., Javan-Nikkhah, M., & Linde, C.C. (2009). Population genetic structure of  
424 *Sclerotinia sclerotiorum* on canola in Iran. *European Journal of Plant Pathology*, 125, 617-  
425 628.

426

427 Jombart, T. (2008). Adegnet: a R package for the multivariate analysis of genetic markers.  
428 *Bioinformatics*, 24, 1403-05.

429

430 Jombart, T., Devillard, S., & Balloux, F. (2010). Discriminant analysis of principal components:  
431 a new method for the analysis of genetically structured populations. *BMC Genetics*, 11, 94

432

433 Kaczmar, M.J., Wilson, V., & Leroux, P. (2000). The control of *Sclerotinia sclerotiorum* on  
434 oilseed rape: what future for carbendazim? *Phytoma*, 529, 31-33.

435

436 Kamal, M.M., Savocchia, S., Lindbeck, K.D., & Ash, G.J. (2016). Biology and biocontrol of  
437 *Sclerotinia sclerotiorum* (Lib.) de Bary in oilseed Brassicas. *Australasian Plant Pathology*, 45,  
438 1-14.

439

440 Kora, C., McDonald, M.R., & Boland, G.J. (2003). *Sclerotinia* of carrot. An example of  
441 phenological adaptation and bicyclic development by *Sclerotinia sclerotiorum*. *Plant Disease*,  
442 87, 456-470.

443

444 Lehner, M.S., Del Ponte, E.M., Gugino, B.K., Kikkert, J.R. & Pethybridge, S.J. (2017).  
445 Sensitivity and efficacy of boscalid, fluazinam and thiophanate-methyl for white mold control  
446 in snap bean in New York. *Plant Disease*, 101, 1253-1258.

447

448 Lehner, M. S., Paula, T. J. Jr, Hora, B. T. Jr, Teixeira, H., Vieira, R.F., Carneiro, J. E. S., &  
449 Mizubuti, E. S. G. (2015). Low genetic variability in *Sclerotinia sclerotiorum* populations from  
450 common bean fields in Minas Gerais State, Brazil, at regional, local and micro-scales. *Plant*  
451 *Pathology*, 64, 921-931.

452

453 Lehner, M.S., Trazilbo, J.P, & Mizubuti, E.S.G. (2016). Does hyphal-tip ensure the same allelic  
454 composition at SSR loci as monosporic isolates of *Sclerotinia sclerotiorum*? *Journal of*  
455 *Phytopathology*, 164, 417-420.

456

457 Malvárez, G., Carbone, I., Grünwald, N.J., Subbarao, K.V., Schafer, M., & Kohn, L.M. (2007).  
458 New populations of *Sclerotinia sclerotiorum* from lettuce in California and peas and lentils in  
459 Washington. *Phytopathology*, 97, 470-483.

460

461 Mert-Turk, F., Ipek, M., Mermer, D., & Nicholson, P. (2007). Microsatellite and morphological  
462 markers reveal genetic variation within a population of *Sclerotinia sclerotiorum* from oilseed  
463 rape in the Canakkale Province of Turkey. *Journal of Phytopathology*, 155, 182-187.

464

465 Nicot, P.C., Avril, F., Duffaud, M., Leyronas, C., Troulet, C., Villeneuve, F., & Bardin, M.  
466 (2016). Are there regional differences in the susceptibility of *Sclerotinia sclerotiorum* strains  
467 to *Coniothyrium minitans*? *IOBC-WPRS Bulletin*, 117, 83-87.

468

469 Petrofeza, S., & Nasser, L.C.B. (2012). Case Study: *Sclerotinia sclerotiorum* : Genetic diversity  
470 and disease control. In: M. Caliskan (Ed) *The Molecular Basis of Plant Genetic Diversity*.

InTech, doi: 10.5772/33780. <https://www.intechopen.com/books/the-molecular-basis-of-plant-genetic-diversity/case-study-sclerotinia-sclerotiorum-genetic-diversity-and-disease-control>

Purdy, L. H. (1979). *Sclerotinia sclerotiorum*: history, diseases and symptomatology, host range, geographic distribution, and impact. *Phytopathology*, 69, 875-880.

Rousset, F. (2008). GENEPOP'007: A Complete Reimplementation of the GENEPOP Software for Windows and Linux. *Molecular Ecology Resources*, 8, 103-106.

Sexton, A.C., Whitten, A.R., & Howlett, B.J. (2006). Population structure of *Sclerotinia sclerotiorum* in an Australian canola field at flowering and stem-infection stages of the disease cycle. *Genome*, 49, 1408-15.

Sirjusingh, C., & Kohn, L.M. (2001). Characterization of microsatellites in the fungal plant pathogen, *Sclerotinia sclerotiorum*. *Molecular Ecology Notes*, 1, 267-69.

Steadman, J.R. (1983). White mold - a serious yield-limiting disease of bean. *Plant Disease*, 6, 7346-350.

Tok, F.M., Dervis, S., & Arslan, M. (2016). Analysis of genetic diversity of *Sclerotinia sclerotiorum* from eggplant by mycelial compatibility, random amplification of polymorphism DNA (RAPD) and simple sequence repeat (SSR) analyses. *Biotechnology and Biotechnological Equipment*, 30, 921-928.

495 Walker, A.S, Gladieux, P., Decognet, V., Fermaud, M., Confais, J., Roudet, J., Bardin, M.,  
 496 Bout, A., Nicot, P.C., Poncet, C., & Fournier, E. (2015a). Population structure and temporal  
 497 maintenance of the multihost fungal pathogen *Botrytis cinerea*: causes and implications for  
 498 disease management. *Environmental Microbiology*, 17, 1261-1274.  
 499  
 500 Walker, A.S., Auclair, C., Rémuson, F., Micoud, A., Carpezat, J., Ravigné, V., & Fournier, E.  
 501 (2015b). Status of resistance towards SDHIs in French populations of *Sclerotinia sclerotiorum*  
 502 and characterization of resistant strains. Presented at Resistance 2015, Harpenden, UK  
 503  
 504 Warmington, R.J. (2014). Pathogen diversity, epidemiology and control of *Sclerotinia* disease  
 505 in vegetable crops. PhD thesis, University of Warwick, UK  
 506  
 507 Winton, L.M., Leiner, R.H. & Krohn, A.L. (2006). Genetic diversity of *Sclerotinia* species from  
 508 Alaskan vegetable crops. *Canadian Journal of Plant Pathology*, 28, 426-434.  
 509  
 510 Zhu, Z.Q., Zhou, F., Li, J.L., Zhu, F.X. & Ma, H.J. (2016). Carbendazim resistance in field  
 511 isolates of *Sclerotinia sclerotiorum* in China and its management. *Crop Protection*, 81, 115-  
 512 121

513

514 **Table 1** Polymorphism of the 16 microsatellites markers designed by Sirjusingh and Kohn  
 515 (2001) used in the present study to characterize the genetic diversity of the 200 *Sclerotinia*  
 516 *sclerotiorum* isolates

Microsatellite locus	Number of alleles	Size range (bp)
5-2	4	310-318
5-3	12	293-335
7-2	4	159-171
7-3	4	206-214
9-2	10	354-384
12-2	3	212-218
13-2	13	274-354
17-3	7	339-360
106-4	24	402-598
110-4	6	366-386
114-4	19	335-411
8-3	8	230-264
36-4	1	411
42-4	4	406-420
55-4	9	146-222
92-4	4	372-382

517

**Table 2** Genetic diversity and linkage disequilibrium of *Sclerotinia sclerotiorum* isolates collected from six different crops in France

	Sample size	Hnb <sup>a</sup>	Allelic richness <sup>b</sup>	No. of distinct MLH <sup>c</sup>	R <sup>d</sup>
<b>Total</b>	<b>200</b>	<b>0.58 (0.24)</b>	<b>8.25</b>	<b>128</b>	<b>0.64</b>
carrot	88	0.54 (0.23)	4.2	51	0.57
melon	55	0.55 (0.26)	4.6	40	0.72
bean	20	0.52 (0.20)	3.8	18	0.89
witloof chicory	15	0.53 (0.24)	3.2	11	0.71
lettuce	12	0.54 (0.26)	4.2	11	0.91
oilseed rape	10	0.55 (0.27)	3.7	10	1

a : unbiased gene diversity (standard deviation between brackets)

b : unbiased allelic richness corrected for a minimum sample size of 10 isolates.

c: multilocus haplotype

d: haplotypic diversity



**Table 3** Allelic richness (AR; based on a minimum sample size of 40) and unbiased gene diversity (Hnb) per microsatellite locus in 84 carrot and 40 melon isolates of *Sclerotinia sclerotiorum* collected from two adjacent districts in southwestern France

Host crop	7-2 <sup>a</sup>		12-2		13-2		106-4		114-4	
	AR	Hnb	AR	Hnb	AR	Hnb	AR	Hnb	AR	Hnb
carrot	2.8	0.50	3.0	0.59	6.6	0.70	16.8	0.85	10.5	0.85
melon	3.0	0.60	3.0	0.55	11	0.81	20.0	0.94	10.0	0.84

Host crop	7-3		8-3		17-3		42-4		9-2	
	AR	Hnb	AR	Hnb	AR	Hnb	AR	Hnb	AR	Hnb
carrot	3.0	0.59	5.8	0.55	4.0	0.59	2.0	0.23	5.8	0.34
melon	4.0	0.57	6.0	0.76	6.0	0.45	2.0	0.03	7.0	0.43

Host crop	55-4		5-3		92-4		5-2		110-4	
	AR	Hnb	AR	Hnb	AR	Hnb	AR	Hnb	AR	Hnb
carrot	8.7	0.82	8.6	0.67	3.0	0.63	2.8	0.24	4.9	0.60
melon	5.0	0.76	10.0	0.64	3.0	0.59	2.0	0.25	5.0	0.67

<sup>a</sup> Microsatellite locus 36-4 is not shown in this table as it was monomorphic in this study

542

543 **Table 4** Characteristics of the loci, sample size and origin of isolates in published studies on544 *Sclerotinia sclerotiorum* using microsatellites markers

545

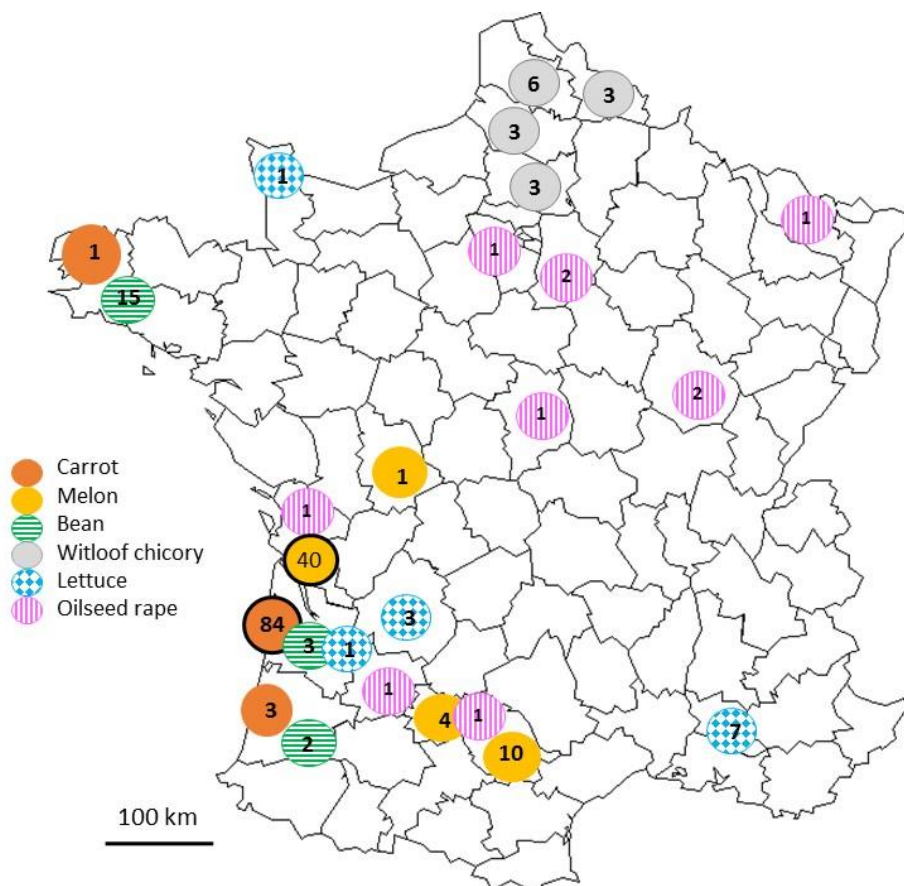
Nb polymorphic loci	Nb monomorphic loci	Nb isolates	Host plants	Country	R <sup>a</sup>	Reference
5	0	156	basil, bean, cabbage, lettuce, potato	USA	0.07	Winton et al. 2006
5	0	65	bean, oilseed rape, cucumber, lettuce, tomato, wild sinapsis	Iran	0.67	Barari et al. 2010
6	1	276	broad bean, canola, tobacco	Iran	0.28	Hemmati et al. 2009
6	0	60	eggplant	Turkey	nd	Tok et al. 2016
7	1	105	canola	Australia	0.53	Sexton et al. 2006
7	1	36	oilseed rape	Turkey	0.63	Met-Turk et al. 2007
8	0	30/29	canola	China/USA	0.96- 0.64	Attanayake et al. 2013
8	0	384	oilseed rape, carrot, celery, lettuce, meadow buttercup, pea	UK	0.59	Clarkson et al. 2013
8	0	54	Chinese cabbage, clover, Jerusalem artichoke, lettuce, potato, pumpkin	Norway	0.92	Warmington 2014
8	0	200	beans (snap, dry, baby lima), soybean	USA	0.13	Dunn et al. (2017)
8	0	800	carrot, camelina, oilseed rape, celery, Chinese cabbage, lettuce, lupin, meadow buttercup, pea,	UK, Norway, Australia	from 0.57 to 0.94	Clarkson et al. (2017)

			potato, pumpkin, turnip rape			
10	0	79	dry bean	Brazil	0.64- 0.71	Gomes et al. (2011)
10	0	118	common bean	Brazil	0.58	Lehner et al. 2015
11	14	167	potato	USA	0.86	Atallah et al. 2004
12	1	145	canola, carrot, dry bean, houndstongue, potato, tobacco, safflower, soybean, sunflower	USA	0.53	Aldrich-Wolfe et al. 2015
15	1	200	bean, oilseed rape, carrot, lettuce, melon, witloof chicory	France	0.64	<b>Present study</b>

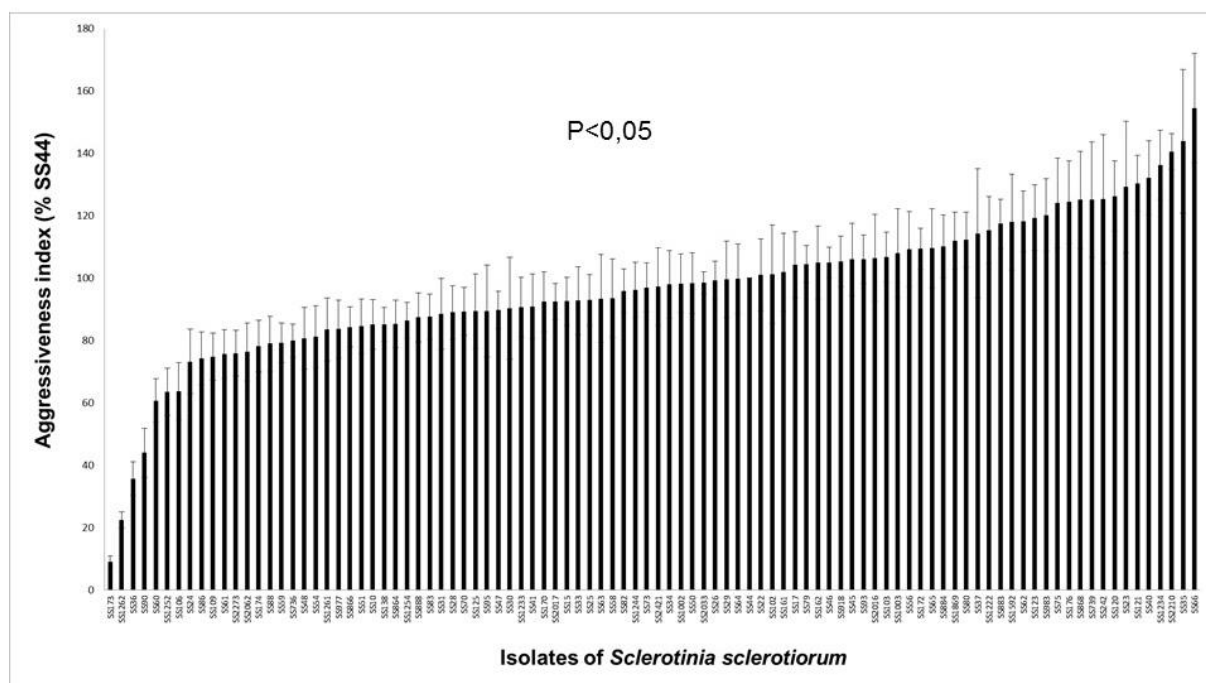
---

<sup>a</sup> : haplotypic diversity as indicated in the cited publications or calculated (according to Arnaud-Haond *et al.* 2007) in the present study from published data.

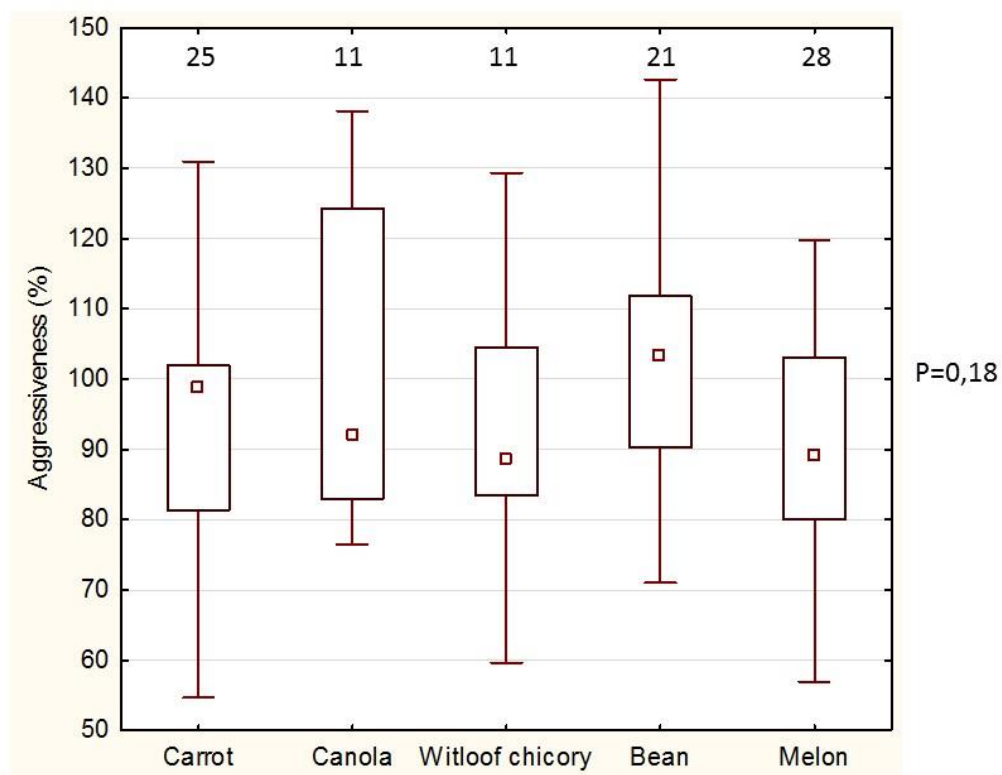
**Fig.1** Geographic localization of the 200 isolates collected on 6 different crops in France (numbers of isolates are indicated in the circles). The isolates taken into account in the regional focus are indicated by circles surrounded by black line



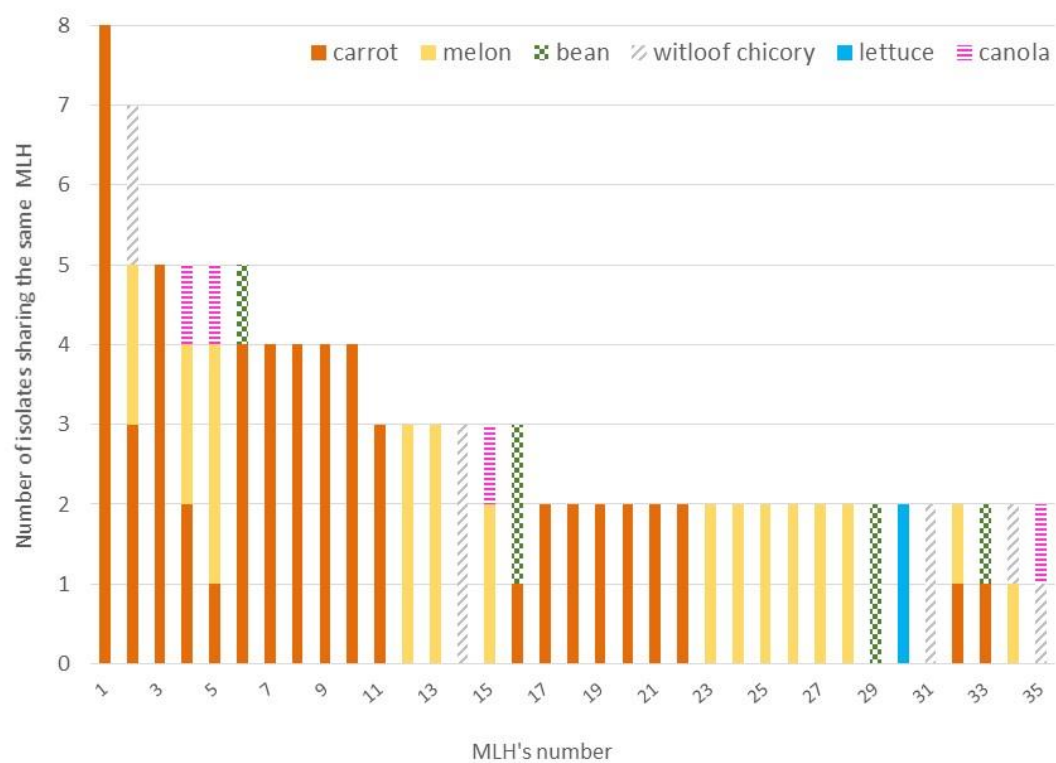
**Fig. 2** Distribution of the aggressiveness (in % relative to the reference isolate SS44) of the 96 isolates of *S. sclerotiorum* on melon leaves. Each histogram represents the mean of ten values. Verticals bars indicate the standard error of the mean.



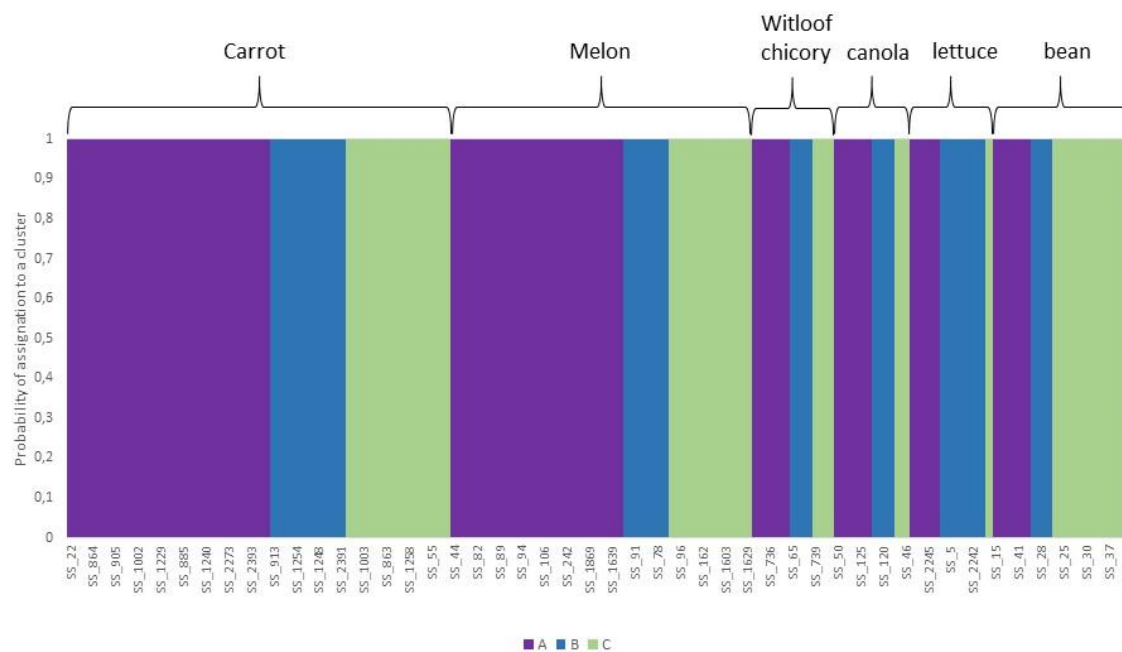
**Fig. 3** Box plot representing the extent of aggressiveness (% relative to the reference isolate SS44) on melon of the isolates of *S. sclerotiorum* collected on 5 crops. The numbers above each boxplot corresponds to the number of isolates collected on each of the 5 plant species. For each boxplot, median ( $\square$ ), 25-75% values ( $\square$ ) and maximum and minimum values (I) are represented



**Fig. 4** Multilocus haplotypes represented by more than one isolate



**Fig. 5** Assignment of *S. sclerotiorum* isolates collected from 6 host plants to 3 genetic clusters (clonally corrected data set).

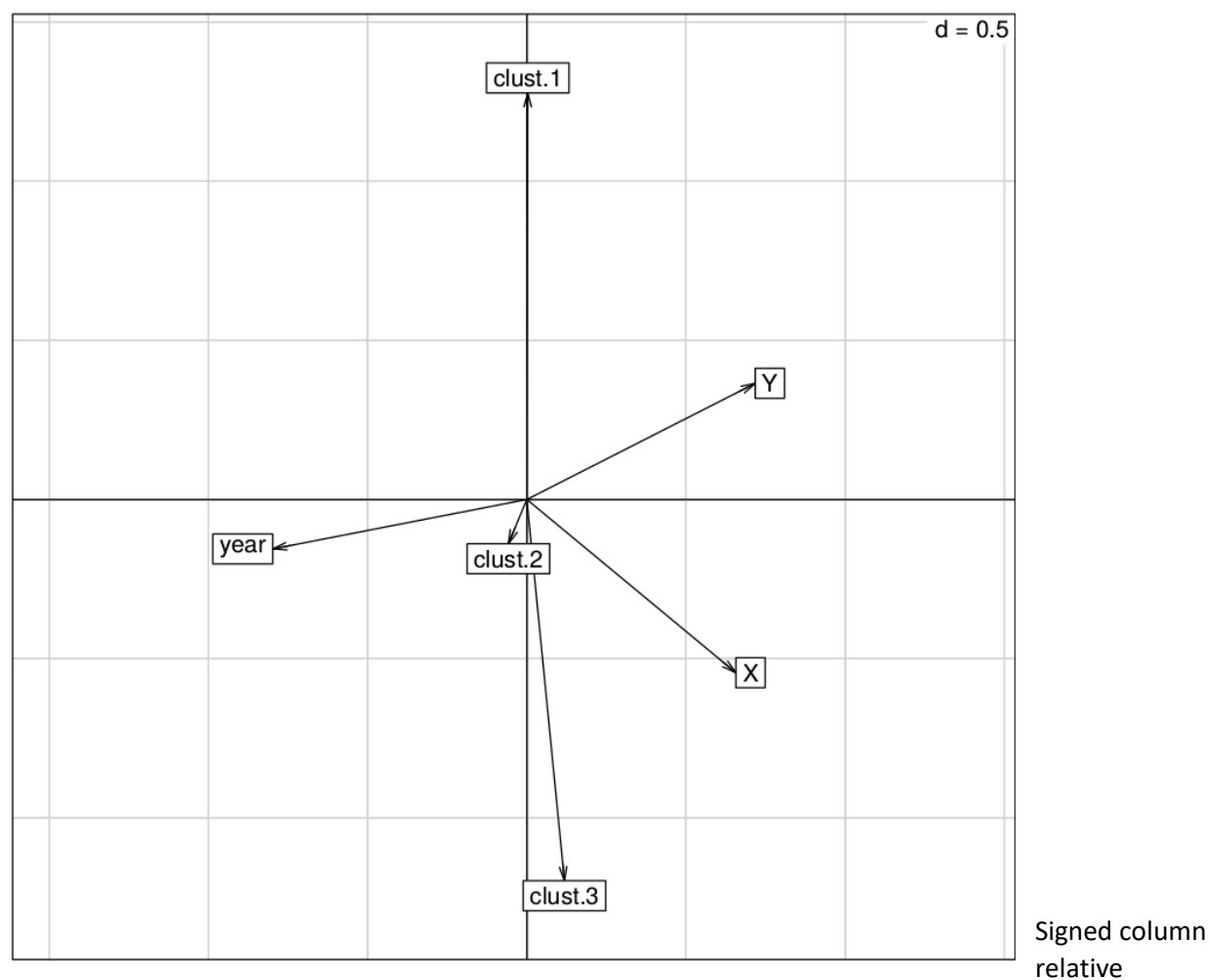




**ESM. 1** Results of the multivariate analysis performed by considering for each isolate the cluster number as a factor and the year of sampling as well as the geographic coordinates as continuous variables.

### Result of the Hill and Smith multivariate analysis

Projection of the variables on the first and second axis



contributions of variable on the first and second axis

	Axis1	Axis2
clust.1	3.082e-04	61.401
clust.2	-3.248e-01	-1.878
clust.3	4.278e-01	-43.928
year	-6.370e+01	-2.416
X	4.312e+01	-29.645
Y	5.146e+01	13.309

## ESM. 2 Results of the test for isolation-by-distance

