



HAL
open science

Conformational Landscape of Oxygen-Containing Naphthalene Derivatives

Manuel Goubet, Marie-Aline Martin-Drumel, Florent Réal, Valérie Vallet,
Olivier Pirali

► **To cite this version:**

Manuel Goubet, Marie-Aline Martin-Drumel, Florent Réal, Valérie Vallet, Olivier Pirali. Conformational Landscape of Oxygen-Containing Naphthalene Derivatives. *Journal of Physical Chemistry A*, 2020, 124, pp.4484-4495. 10.1021/acs.jpca.0c01188 . hal-02613756

HAL Id: hal-02613756

<https://hal.science/hal-02613756>

Submitted on 19 Jun 2020

HAL is a multi-disciplinary open access archive for the deposit and dissemination of scientific research documents, whether they are published or not. The documents may come from teaching and research institutions in France or abroad, or from public or private research centers.

L'archive ouverte pluridisciplinaire **HAL**, est destinée au dépôt et à la diffusion de documents scientifiques de niveau recherche, publiés ou non, émanant des établissements d'enseignement et de recherche français ou étrangers, des laboratoires publics ou privés.

Conformational Landscape of Oxygen-Containing Naphthalene Derivatives

Manuel Goubet¹, Marie-Aline Martin-Drumel², Florent Réal¹, Valérie Vallet¹, and Olivier Pirali²

¹ Université Lille, CNRS, UMR 8523-PhLAM-Physique des Lasers, Atomes et Molécules, F-59000 Lille, France

² Université Paris-Saclay, CNRS, Institut des Sciences Moléculaires d'Orsay, 91405 Orsay, France

Contact corresponding author(s): manuel.goubet@univ-lille.fr, olivier.pirali@universite-paris-saclay.fr

Accepted article

Polycyclic aromatic compounds (PACs) constitute an important class of molecules found in various environments and are considered important pollutants of the Earth's atmosphere. In particular, functionalization of PACs modify the ring aromaticity, which greatly influences the chemical reactivity of these species. In this work we studied several oxygen-containing PACs, relevant to atmospheric chemistry. We investigated the conformational landscape of four naphthalene-derivative molecules — namely, 1- and 2-hydroxynaphthalene and 1- and 2-naphthaldehyde — by means of rotational and vibrational spectroscopy supported by quantum chemical calculations. For 1-hydroxynaphthalene and 1-naphthaldehyde, intramolecular hydrogen bonding and steric effects drive the conformational preferences while for 2-hydroxynaphthalene and 2-naphthaldehyde, the charge distributions allow us to understand the conformational landscape. This work not only demonstrates how the localization of the substitution group in the ring influences the conformational relative energies and but also constitutes a step toward a better understanding of the different chemical reactivity of such functionalized PACs.

1. Introduction

Polycyclic aromatic compounds (PACs), which represent about two-thirds of the so far known chemical compounds [1], are of high relevance in diverse fields ranging from astrophysics and atmospheric chemistry to combustion science. Within this very rich class of molecules, purely carbonaceous species (also called polycyclic aromatic hydrocarbons, PAHs) may be those that have received the most attention in the laboratory so far, in part driven by astrophysical motivations (see, *e.g.*, the review by Tielens [2]). Indeed, since the early hypothesis formulated by Léger & Puget [3] and Allamandola *et al.* [4], PAH molecules are suspected to be abundantly present in the interstellar medium. Their neutral, ionized, and radical forms have been suggested as carriers of many broad absorption and emission features observed in various objects of the universe (see, *e.g.*, Ref 5). Besides PAHs, functionalized variants are relevant to many scientific fields as well. Recently, several pure rotational transitions of a functionalized aromatic compound, benzonitrile (C_6H_5-CN), have been unambiguously detected in the spectrum of the TMC-1 molecular cloud [6], confirming the presence of PACs in the interstellar medium.

PAC molecules also constitute an important class of pollu-

tants of the Earth's atmosphere; they originate mainly from incomplete combustion processes (*e.g.*, residential heating, vehicle exhausts) and can be found both in gas and in particle phases [7]. Functionalized species can either be direct products of such combustion processes or secondary products resulting from oxidation of primary PAH species. Recent studies that aimed at measuring the seasonal variations in the abundances of more than 80 PACs in an urban environment highlighted both the importance of such species for Earth's atmosphere science and the concern raised by their influence on atmospheric chemistry and, to some extent, human health [8]. In the atmosphere, oxygen-containing PACs are almost as abundant as PAHs while their vapor pressures are about 10 times lower than their corresponding parent PAH species and therefore constitute an important class of aerosol precursors [9, 10]. Despite their relevance to Earth's atmosphere, very little is known concerning the spectroscopy and structural information on these compounds, preventing both their efficient tracking and a better understanding of their formation/destruction chemical networks.

Aside from the importance of PACs in atmospheric science and astrophysics, fundamental questions regarding the influence of a functional group on aromaticity remain open. Indeed,

while PAHs are relatively chemically stable compounds, when functionalized their reactivity either increases or decreases drastically. Substitution of a hydrogen by a functional group, either electron-withdrawing or electron donor, obviously breaks the symmetric electronic distribution over the ring, modifying its affinity for electrophilic attack. For instance, PACs containing hydroxyl or amino groups (activating groups) are more reactive than the corresponding, nonfunctionalized, PAHs. Conversely, PACs containing aldehyde or nitro groups (deactivating groups) are less reactive than their parent PAHs. In addition to their influence on chemical reactivity, functionalized PACs tend to be more easily adsorbed than their PAHs counterparts [11], revealing an increased affinity for long-range polar interactions. At the molecular level, the addition of functional groups decreases the degree of symmetry of most PACs. If the functional group is itself asymmetric, at least two conformers (distinct by a 180° rotation around the bond linking the functional group to the PAHs fragment) will coexist but will not be isoenergetic for reasons that deserve elucidation. Such conformational energy differences are particularly small and can only be captured by highly accurate quantum chemical calculations.

In this work, pure rotation spectroscopy in the centimeter and millimeter wave regions together with vibrational spectroscopy in the infrared (IR) range have been used to characterize four oxygen containing (two hydroxyls and two aldehydes) functionalized naphthalene molecules, namely, 1- and 2-hydroxynaphthalene ($C_{10}H_7-OH$), and 1- and 2-naphthaldehyde ($C_{10}H_7-C(O)H$). Electronic structure calculations have been undertaken not only to support the spectral analyses but also to elucidate the conformational preferences. The present study provides valuable data enabling the confident search for these species in the Earth's atmosphere and interstellar medium. Finally, in light of the experimental and theoretical results, the stability of the different isomers and conformers is discussed in terms of asymmetric charges distribution, providing some insights into the influence of functional groups on aromaticity at the molecular level.

2. Laboratory Methods

2.1. Quantum Chemical Calculations

2.1.1. Structures and Zero Point Energies

All the calculations were performed using Gaussian 16 rev B.01 software [12] on the PhLAM laboratory computing cluster. The equilibrium geometries of each of the two stable conformers (*cis* and *trans*, Figure 1) of the studied compound were fully optimized both using second order Møller-Plesset perturbation theory (MP2) and density functional theory (B97-1) with Dunning's correlation consistent basis sets (aug-cc-pVXZ ($X=D,T,Q$)) [13] using the tight convergence option. Following these optimizations, harmonic frequencies calculations were performed using a tight SCF convergence criterion, the ultrafine integral grid option, and the "vibrot" option to obtain harmonic vibrational frequencies — (thus zero-point energy (ZPE) correction to the energies) — and the vibration-rotation coupling (quartic centrifugal distortion) constants.

2.1.2. Vibrational Frequencies and Rotational Constants

Anharmonic vibrational frequencies and rotational constants in the ground and vibrationally excited states have been estimated from a "hybrid" method [14, 15], recently used with success on other oxygen-containing species [16, 17]. Briefly, since vibrational second-order perturbation theory (VPT2) calculations at the MP2 level as implemented in Gaussian 16 are not affordable for relatively large molecules as those of interest here, "hybrid" rotational constants of a given vibrational state ν are estimated by adding the DFT anharmonicity corrections (B97-1/cc-pVTZ) to the MP2 equilibrium constants (MP2/cc-pVTZ). Once the experimental constants in the ground vibrational state (GS) are known, the predicted constants in vibrationally excited states (ES) can further be corrected to take into account the vibrational GS errors, a method that has proven useful in the past to support the analyses of the vibrational ES spectra of many molecules, as for instance PAHs [18]. This correction was particularly useful to assign the pure rotation lines involving ES of *trans*-1-hydroxynaphthalene as shown further in the text.

2.1.3. Isomeric and Conformational Landscapes

For 1-hydroxynaphthalene, a MP2/cc-pVTZ potential energy curve (PEC) along the C–O torsional angle has been calculated by means of a relaxed scan procedure along the C–C–O–H dihedral angle with 5° steps. The resulting PEC permitted us to ensure that the torsion is a very classical nonequivalent 2-fold potential with the functional group in the plane of naphthalene at equilibria and perpendicular to the plane at transition states (TS), TS mirror images being strictly equivalent in energy (see Figure S1 in the Supporting Information). Therefore, only TS searches (using the QST method as implemented in Gaussian 16) have been performed for the three other compounds. The relative ZPE corrected energies of each conformer and the height of the barriers between them (*i.e.*, torsion of the alcohol or aldehyde group) have been estimated at the "hybrid" level described above and are presented in Figure 1 and Tables S1 and S2 in the Supporting Information.

Since the computed relative energies between isomers/conformers are rather small (few kJ mol^{-1} in most cases), it is relevant to estimate the uncertainty relative to the choice of both the correlated electronic structure method and the size of the atomic basis sets. In quantum chemistry, the most accurate estimation of the dynamic correlation is achieved by using complete basis set (CBS) extrapolation and the gold standard coupled-cluster method with iterative inclusion of single and double excitations and perturbative inclusion of triple excitations (CCSD(T)). In the case of functionalized naphthalene compounds, the precision of the hybrid method can be estimated from single-point calculations of the relative energies. Such calculations have been performed on naphthaldehyde compounds with the MOLPRO 2019 package [19] using various wave function methods [MP2, CCSD(T)] extrapolated to the CBS limit, as well as localized explicit-correlated method PNO-LCCSD(T)-F12 (PNO being pair natural orbitals) [20, 21]. The results of this comparison (see Table S3 in the Supporting Information) show that no notable differences in relative energies are obtained compared to the hybrid level (changes by few %

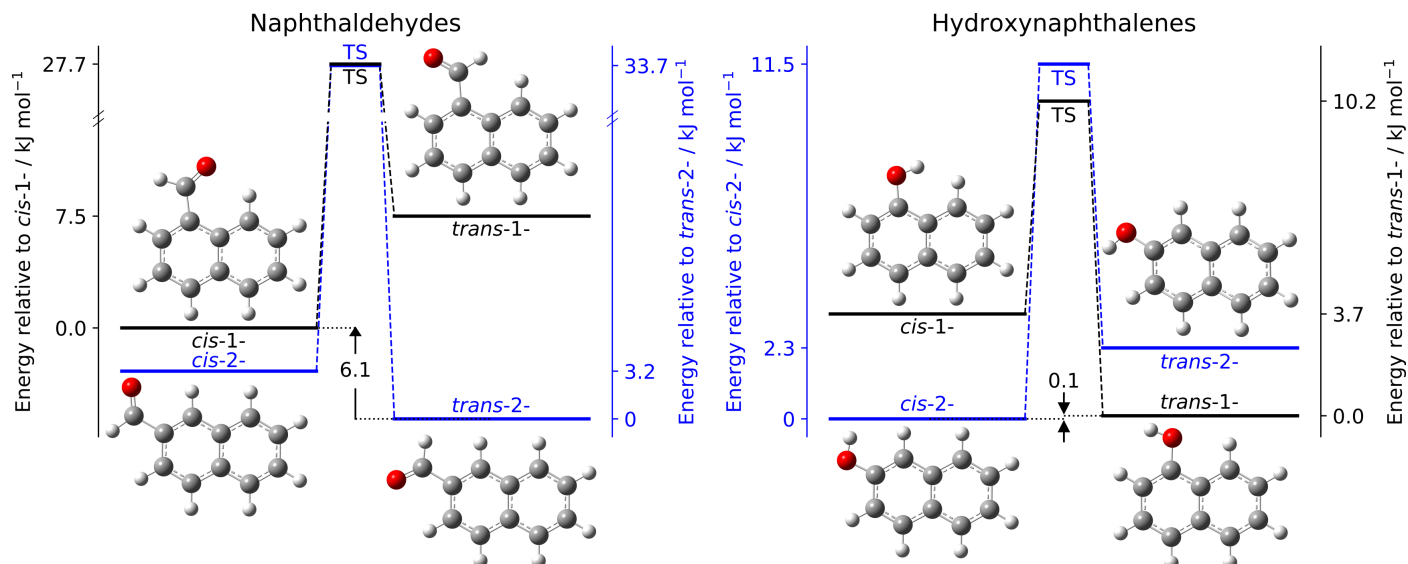


Fig. 1. Schematic view of the conformational landscapes of the naphthaldehyde (*left trace*) and hydroxynaphthalene (*right trace*) compounds. The isomers of lower energy, *i.e.*, 2-naphthaldehyde and 2-hydroxynaphthalene, are plotted in blue and the energy difference between the 1- and 2- compounds is reported (in kJ mol^{-1}). Relative zero point energies have been calculated by using the hybrid method described in the text.

only). Thus, for all other compounds, the discussion is based on the results of the hybrid method only.

2.1.4. Charges Distributions and Molecular Orbitals

The natural bond orbital (NBO) analysis program (version 6.0) [22] has been used to compute the atomic charge distribution and pinpoint the presence of intramolecular hydrogen bonds. Indeed, NBO transforms the delocalized, many-electron wave function into optimized electron pair bonding subunits, *i.e.*, in a set of Lewis-type (such as bonds and lone pairs) and non-Lewis-type (such as Rydberg and antibond) NBOs. Since a hydrogen bond can be viewed as a charge transfer from a donor (oxygen lone pair) to an acceptor (antibonding C–H), its strength can be quantified by the stabilization energy $E(2)$ computed at the second-order perturbation-theory by the NBO analysis, when larger than the default threshold 2 kJ mol^{-1} . Naphthaldehyde isomers were used to test the variations caused by various method/basis set associations (MP2 and B97-1 methods, cc-pVXZ and aug-cc-pVXZ basis sets, with X = D,T,Q). Absolute values of atomic charges are notably changing according to the method/basis set used. However, all tendencies discussed hereafter from results at the MP2/aug-cc-pVQZ level (considered as the highest one) stay the same, from a relative point of view, whatever the method used. NBO calculations have been subsequently performed on hydroxynaphthalene, naphthalene, benzaldehyde, and hydroxybenzene.

2.2. Chemical Samples

All four samples, 1- and 2-hydroxynaphthalene and 1- and 2-naphthaldehyde, have been purchased from Aldrich and used without further purification.

2.3. Centimeter Wave Spectroscopy

The pure rotation spectra of 1- and 2-hydroxynaphthalene and 1- and 2-naphthaldehyde have been recorded in the 2–20 GHz frequency range using a supersonic jet Fourier transform microwave (FTMW) spectrometer located at the PhLAM Laboratory (see refs 23, 24 for details). A heated nozzle [25] allowed to mix the sample vapor with the carrier gas (neon) at a backing pressure of about 0.3 MPa. Temperatures ranging from 393 to 413 K were found to optimize the signal-to-noise ratio (SNR) depending on the amplitude of the recorded lines. The spectral resolution was set to 1.8 kHz, subsequently considered as the line accuracy. Examples of observed signals are displayed in Figure 2.

2.4. Millimeter Wave Spectroscopy

Room temperature millimeter-wave absorption spectra of each of the four species were recorded at ISMO laboratory. The spectrometer, described in Ref. [26], is composed of a radio frequency synthesizer driving a commercial frequency multiplier source from Virginia Diodes Inc. In the present study, all spectra were recorded in the 140–220 GHz range using similar experimental conditions: a 49 kHz frequency modulation of the signal with a modulation depth of 300 kHz, a 25 ms time constant, 30 kHz frequency steps, and a second harmonic lock-in detection were used. The collimated radiation was injected in a 2.25 m absorption cell equipped with Teflon windows. The output radiation was focused onto a Schottky diode detector from Virginia Diodes Inc. A constant flow of sample at a pressure lower than 0.1 Pa was used to record the spectra. Under these experimental conditions, the line center frequency accuracy ranges from 50 to 75 kHz, based on the SNR.

Figure 3 shows a small portion of the 1-hydroxynaphthalene absorption spectrum. Several clusters of lines corresponding

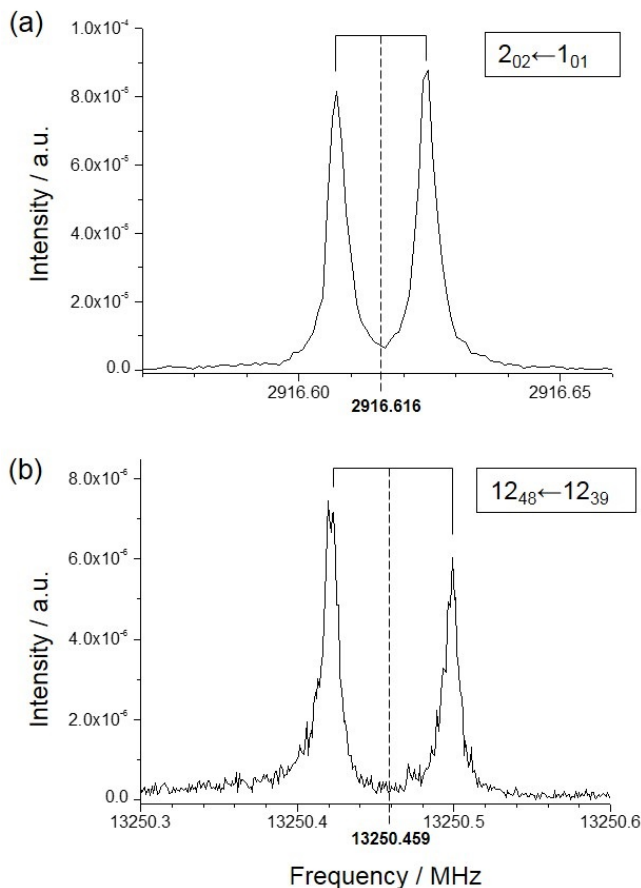


Fig. 2. Examples of FTMW lines (in the shape of Doppler doublets resulting from the coaxial arrangement of the cavity and the supersonic expansion) of 2-hydroxynaphthalene: (a) strong ${}^9\text{R}$ -type and (b) weak ${}^{\text{P}}\text{Q}$ -type transitions of the *cis* conformer. These spectra correspond to 100 and 1000 acquisitions, respectively. Assignments are in the format $J'_{K'_a K'_c} \leftarrow J''_{K''_a K''_c}$. Center frequency for each doublet is taken as the average of the two Doppler components.

to ${}^9\text{R}$ -type transitions within GS and several ES are clearly identified. The simulated spectrum is obtained using the final set of rotational constants as given in Tables 3 and S6 in the Supporting Information.

2.5. Fourier-Transform IR Spectroscopy

In addition to the pure rotation measurements, the vibrational spectra of the two naphthaldehyde species were recorded in the 50–3500 cm^{-1} spectral range. The absorption spectra were recorded using the Bruker IFS125HR Fourier-transform (FT) interferometer located on the AILES beamline of the SOLEIL synchrotron. Room temperature vapor pressure of each sample (typically of the order of a few Pa) was injected in a White-type multipass cell with optics set to obtain 150 m path length [27]. We attempted to record the absorption spectra of the two hydroxynaphthalene molecules in the same conditions but their lower vapor pressure prevented from any vibrational band detection. For the naphthaldehydes spectra, the rotational structures

of the vibrational bands could not be resolved at the ultimate resolution of the FT interferometer (0.001 cm^{-1}), we chose a spectral resolution of 0.5 cm^{-1} to record the vibrational signatures. Since such relatively low spectral resolution does not require the use of synchrotron radiation as a continuum source for the interferometer, a global source was used instead. A $6 \mu\text{m}$ mylar beamsplitter and a liquid He cooled bolometer were used to record the spectra in the 50–600 cm^{-1} range. For the 600–3500 cm^{-1} range, a KBr beamsplitter was used together with a liquid nitrogen cooled HgCdTe detector.

3. Results

The quantum chemical relative energies of the conformers allow to evaluate their population at 300 K. For 1-naphthaldehyde, 95 % of the population is in the *cis* form while for 2-naphthaldehyde 79 % of the population is in the *trans* form. Concerning 1-hydroxynaphthalene, 82 % of the population is in the *trans* form while for 2-hydroxynaphthalene, 71 % is in the *cis* form (see Tables S1 and S2 in the Supporting Information).

3.1. Vibrational Spectra of 1- and 2-Naphthaldehyde

All four naphthaldehyde compounds (*cis* and *trans* of both 1- and 2-species) belong to the C_s symmetry point group and possess 37 A' and 17 A'' vibrational modes. Vibrational bands of A' symmetry are of a/b -type while those of A'' symmetry are of c -type.

Using the experimental conditions described in the previous section, the vibrational bands observed for both 1- and 2-naphthaldehyde samples come out as unresolved rotational envelopes (spreading over about 20 cm^{-1} , Figure 4). Most of the IR bands are relatively weak and many possible overlapping bands complicate the vibrational assignment, in particular in the mid-IR. The experimental band frequencies are obtained by measuring the maximum absorption of the relatively sharp Q-branch for the out-of-plane modes (c -type bands). For the in-plane modes (a/b -type bands), we used the Q-branch when the latter was clearly observed but, in many cases these bands appear as broad, structureless envelopes in which cases the band frequency was measured at the maximum of the band. The resulting frequency accuracy ranges from about 1 cm^{-1} for well-defined Q-branches to several cm^{-1} otherwise.

Only the most stable conformers of each compound, *cis*-1-naphthaldehyde and *trans*-2-naphthaldehyde, whose IR bands dominate the experimental spectra, have been detected using our room temperature experimental setup (Figure 4). Table 1 reports the proposed vibrational assignments and the comparison with the calculations of the far-IR bands (below 700 cm^{-1}) while the full IR assignment is reported in Table S4 in the Supporting Information. The comparison between experimental and calculated IR spectra of 1- and 2-naphthaldehyde species are displayed on Figure 4.

Due to the relatively low vapor pressure of the naphthaldehyde samples at room temperature, our detection was limited to the most intense mid- and far-IR bands (of calculated intensities larger than about 3 km.mol^{-1}). In the far-IR, the vibrational bands involve in-plane and out-of-plane deformations of the carbon skeleton of the molecules. Assignments are proposed on

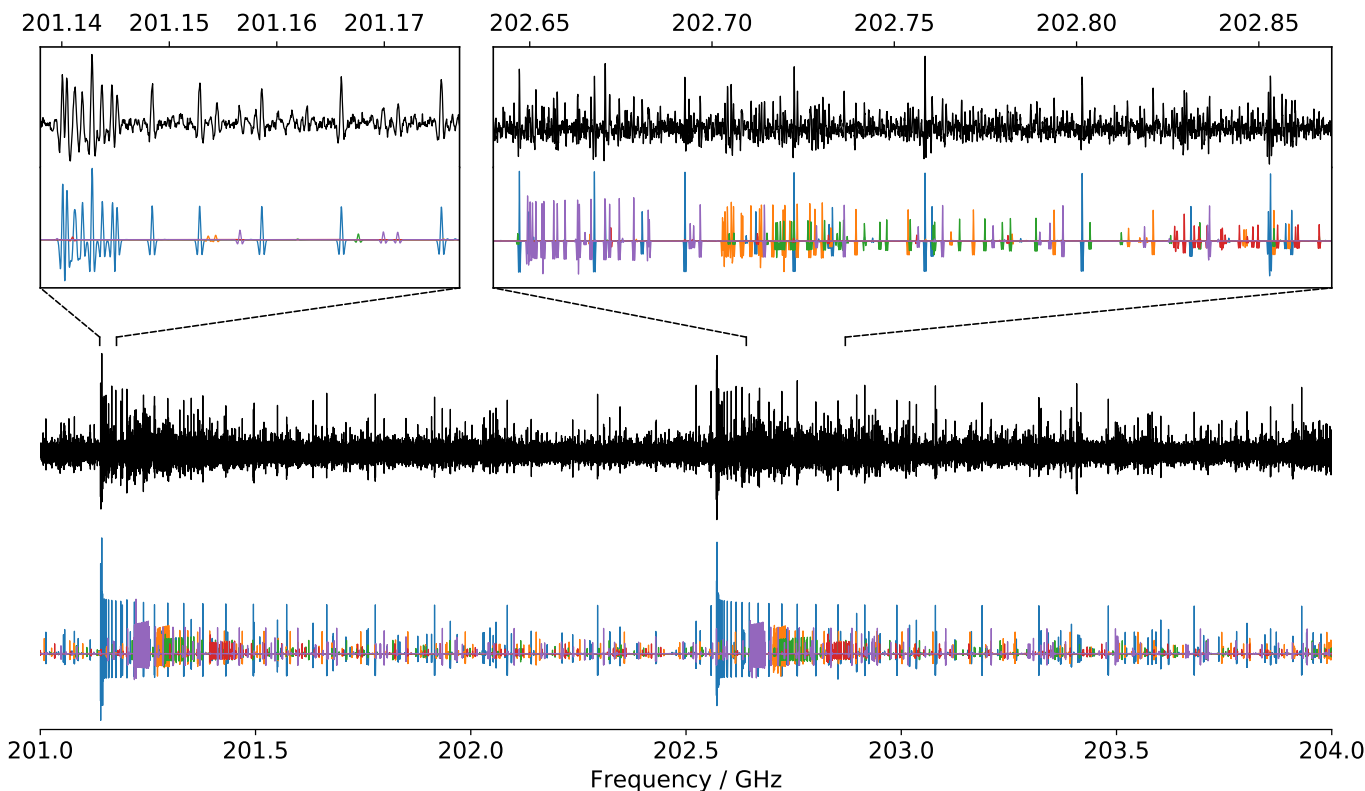


Fig. 3. Portions of the room temperature experimental millimeter spectrum of 1-hydroxynaphthalene (top traces, in black) and comparison with a simulation (bottom traces) of the pure rotational transitions within the ground state (in blue) and within several low-lying vibrational excited states (various colors; see the Supporting Information). The broader portion of the spectrum displays two consecutive ${}^{\text{q}}\text{R}$ series with $J'' + K_a'' = 139/140$ and $140/141$ (unresolved asymmetric splitting). The PGOPHER software was used to simulate the spectrum at 300 K using the rotational constants in each state derived in this work. Relative intensities of the ES rotational lines are modeled using the calculated (hybrid method) energies of each mode and a Boltzmann distribution at 300 K. The second derivative of the obtained traces was subsequently calculated to allow better comparison with the experimental spectrum.

the basis of the the agreement with the calculated frequencies (hybrid method), the relative harmonic intensities of the modes (MP2 calculation), and the rotational contour of the band (since out-of-plane modes are c -type and thus display distinctive sharp and intense Q-branches). It is worth noting that for most of the calculated vibrational modes, the anharmonic corrections are relatively small (typically of order of a few cm^{-1}), at the notable exception of some bands (see, *e.g.*, in Table 1 the comparison between harmonic and anharmonic energies of $\nu_{37} = 1$ of *cis*-1-naphthaldehyde molecule for which the anharmonic shift is larger than 50 cm^{-1} making the assignment rather insecure). For most of the bands, the agreement between observed and calculated bands (both in terms of frequency and intensity) is quite good (corresponding to a few wavenumbers difference) supporting the use of such hybrid calculations (as already shown in previous papers, see *e.g.*, ref 28 and references therein) to predict relatively accurately IR spectra of large and rigid molecules at a low computational cost.

3.2. Pure Rotation Spectra

The analysis procedure used in this work is similar to the one used in previous investigations of rotationally resolved spectra

of N-substituted PAHs [28]. Briefly, the theoretical calculations provide a first set of rotational constants enabling the search for the centimeter-wave jet-cooled rotational transitions of the molecules. Once the most intense lines are observed and assigned, an accurate set of parameters can be derived that then allows a relatively straightforward assignment of the millimeter-wave room-temperature spectra using a combination of Loomis-Wood [29], PGOPHER [30], and Pickett's suite of programs [31].

The ground-state conformer of each of the studied compounds is a nearly prolate asymmetric top belonging to the C_s symmetry point group with a permanent dipole moment along both the a and b axis (see Tables 2 and 3 for dipole-moment values). The rotational transitions were fitted to a Watson Hamiltonian in the A -reduction and I' representation. For the four most stable species studied here, both a -type and b -type transitions were observed in the FTMW spectra while the lower spectral resolution of the room temperature millimeter-wave spectra, together with the limited SNR, did not allow to resolve these different components. Typically, transitions involving quantum numbers up to $J \sim 150$ and $K_a \sim 40$ were assigned. Owing to the relatively high rigidity of the species, only the three rota-

Table 1. Calculated Far-IR Fundamental Vibrational Modes of *cis*-1-Naphthaldehyde and *trans*-2-Naphthaldehyde and Comparison with Proposed Experimental Assignments. Energies are given in cm^{-1} and intensities in km mol^{-1} .

ν	sym.	<i>cis</i> -1-naphthaldehyde						<i>trans</i> -2-naphthaldehyde					
		B97-1		MP2		Hybrid	Exp.	B97-1		MP2		Hybrid	Exp.
		E_h	E_a	E_h	I_h	E	E	E_h	E_a	E_h	I_h	E	E
32	A'	658	649	655	18.3	646	647	639	633	632	1.9	625	
33	A'	553	546	550	2.5	544	548	612	606	608	3.6	602	603
34	A'	501	495	498	1.6	491	497	519	514	516	0.1	510	
35	A'	436	433	434	1.5	431	430	390	388	385	5.5	383	388
36	A'	366	362	359	0.1	355		348	350	347	2.8	348	
37	A'	218	165	218	6.5	166	225 ?	176	184	175	6.0	182	177
47	A''	639	637	613	0.01	611		645	639	619	0.9	614	
48	A''	538	529	528	6.0	519	525	512	507	501	0.3	496	
49	A''	479	472	468	0.4	462		485	479	476	15.9	471	472
50	A''	413	408	406	3.6	401	400	400	395	392	0.04	387	
51	A''	273	266	265	5.7	258	255	297	289	293	3.3	285	
52	A''	181	177	178	0.9	174		191	187	187	4.7	183	181
53	A''	151	146	147	3.7	141	143	160	156	156	4.8	152	152
54	A''	85	76	79	3.5	70	76	78	77	77	1.6	75	

Note. h and a subscripts stand for harmonic and anharmonic, respectively.

tional constants (A, B, C) and the quartic centrifugal distortion terms were required to fit the data to their experimental accuracy. Tables 2 and 3 contain the results of our analysis and the comparison with the hybrid calculations. The full tables of rotational constants obtained at each stage of the calculations are provided in Table S5 in the Supporting Information. The GS rotational constants calculated using this hybrid method are in very good agreement with the experimental values, with errors below 0.5 % for the $A, B,$ and C rotational parameters. However, as such rigid molecules have relatively small quartic centrifugal distortion constants, the agreement between the measured and calculated parameters is significantly worse (in particular the δ_J and δ_K parameters can show opposite signs).

For all species, only the conformer of lowest energy was observed unambiguously in the experimental spectra. In the millimeter-wave region, where broad surveys were recorded, the lack of detection of the high-energy conformer is imputed to the low vapor pressure at room temperature, which results in relatively limited SNR, despite the relatively large value of the permanent dipole moments of each species. In the case of the millimeter-wave spectrum of *trans*-1-hydroxynaphthalene, the SNR is somewhat larger than for the three other species, allowing pure rotational lines involving four different ES to be assigned. Unambiguous assignments of these ES pure rotation spectra are allowed thanks to the good predicting power of the calculated constants by comparison with anharmonic calculations (Figure 3 and Tables S6 and S7 in the Supporting Information).

4. Discussion

The relative stability of the species in the naphthaldehyde / hydroxynaphthalene families warrants further discussion. Calculated energies performed in this work show that the substitution in position 2- is the most stable for the $-\text{COH}$ isomers while the $-\text{OH}$ are almost isoenergetic, and the *cis* vs. *trans* conformer stability is completely different for both the two considered substitutions ($-\text{COH}$ and $-\text{OH}$) and their isomers (1- and 2-, Figure 1). The latter point is unambiguously confirmed by the experimental measurements since for all pure compounds studied, only the conformer predicted to be the most stable by the calculations has been observed. In order to shed some light into the physical and chemical factors that govern these conformational landscapes, in this section we discuss the differences between all species in terms of electrostatic interactions (steric repulsion and local charges) that we found in agreement with the relative stabilities.

4.1. Isomeric Considerations

Prior to a detailed conformational analysis, only the most stable conformer of each species will be considered here. The charges derived from the NBO calculations (see Tables S8 and S9 in the Supporting Information) together with molecular structures (see Figure 5 for the most relevant topological parameters) are useful indicators to assess the relative isomeric stability, by verifying their agreement with relative energies and well-established chemical considerations: (i) an aldehyde is an electrophilic group; (ii) an hydroxy group can either be electron sharing or withdrawing (by resonant or inductive effect, respectively); and (iii) a hydroxy is an activating group while an aldehyde is a deactivating group. On one hand, steric effects within isomers

Table 2. Experimental and Calculated Rotational Parameters (in MHz) for the Naphthaldehyde Species. Error (1σ) on parameters are given between parenthesis in units of the last digit.

	<i>cis</i> -1-naphthaldehyde			<i>trans</i> -2-naphthaldehyde		
	Calc. ^a	Exp.	$\delta^b / \%$	Calc. ^a	Exp.	$\delta^b / \%$
A_0	1380	1384.40872 (21)	0.32	2802	2810.43194 (15)	0.30
B_0	995	999.015243 (71)	0.40	580	581.095981 (24)	0.19
C_0	579	580.551953 (19)	0.27	480	481.700564 (18)	0.35
$\Delta_J \times 10^6$	0.46	23.855 (38)	5086	2.3	4.44535 (45)	93
$\Delta_{JK} \times 10^3$	-0.11	-0.0482 (13)	-56	0.14	0.025237 (11)	-82
$\Delta_K \times 10^3$	0.065	0.0882 (35)	36	1.3	0.191170 (84)	-85
$\delta_J \times 10^6$	-0.52	9.751 (19)	-1975	0.21	0.81290 (19)	287
$\delta_K \times 10^3$	-0.050	0.01153 (72)	-123	-0.035	0.025091 (24)	-172
dipole						
<i>a</i> -type / D	1.3			3.5		
<i>b</i> -type / D	2.7			0.7		
# lines						
FTMW		62			32	
mmW		3 018			2671	
RMS / kHz		62			69	

^a Hybrid rotational constants and MP2 centrifugal distortion terms, see text

^b $\delta = (B_{\text{Exp.}} - B_{\text{Calc.}}) / B_{\text{Calc.}} \times 100$

Table 3. Experimental and calculated rotational parameters (in MHz) for the hydroxynaphthalene species. Error (1σ) on parameters are given between parenthesis in units of the last digit.

	<i>trans</i> -1-hydroxynaphthalene			<i>cis</i> -2-hydroxynaphthalene		
	Calc. ^a	Exp.	$\delta^b / \%$	Calc. ^a	Exp.	$\delta^b / \%$
A_0	1934	1942.100623 (53)	0.42	2837	2849.155543 (64)	0.43
B_0	1132	1133.623211 (21)	0.14	823	824.632161 (25)	0.20
C_0	714	716.017762 (14)	0.28	638	639.723697 (15)	0.27
$\Delta_J \times 10^6$	18	17.90338 (92)	-0.54	6.6	8.2474 (19)	25
$\Delta_{JK} \times 10^3$	0.010	0.0159910 (44)	60	0.071	0.014844 (25)	-79
$\Delta_K \times 10^3$	0.050	0.044395 (14)	-11	0.22	0.185375 (72)	-16
$\delta_J \times 10^6$	6.6	6.43578 (37)	-2.5	1.3	2.05543 (90)	58
$\delta_K \times 10^3$	0.034	0.0351740 (62)	3.5	0.040	0.030525 (43)	-24
dipole						
<i>a</i> -type / D	1.2			0.2		
<i>b</i> -type / D	0.2			1.0		
# lines						
FTMW		50			82	
mmW		3 636			1248	
RMS / kHz		62			37	

^a Hybrid rotational constants and MP2 equilibrium centrifugal distortion terms, see text

^b $\delta = (B_{\text{Exp.}} - B_{\text{Calc.}}) / B_{\text{Calc.}} \times 100$

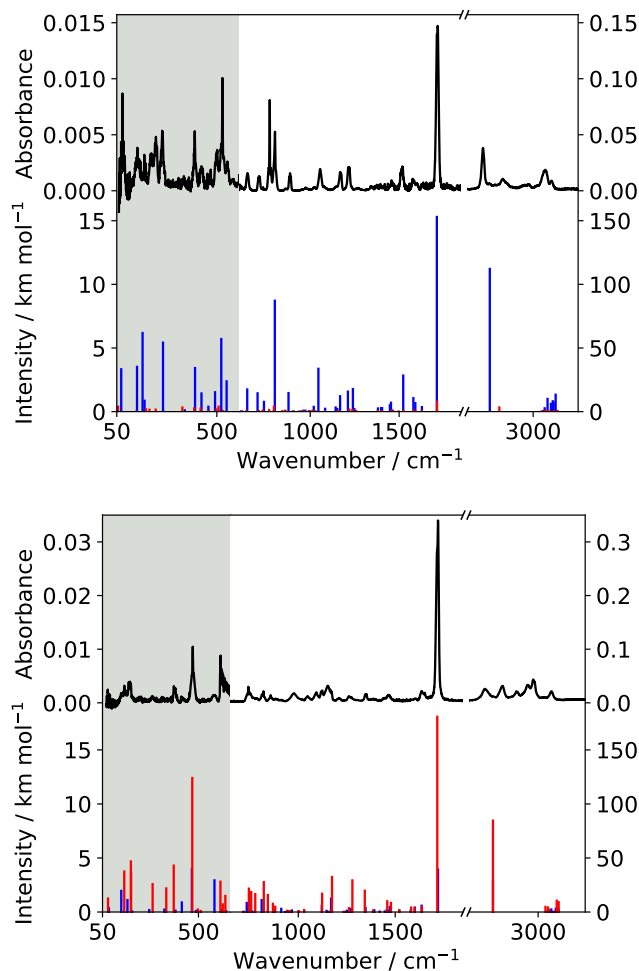


Fig. 4. Experimental infrared spectra (in black) of 1- (top plot) and 2-naphthaldehyde (bottom plot), and comparison with a stick spectrum of the predicted fundamental bands (hybrid level for positions and MP2/VTZ for harmonic intensities) of the *cis* (in blue) and *trans* (in red) conformers of each species. For the sake of clarity, all intensities are multiplied by a factor 10 in the low frequency part of the spectrum (gray background areas). Intensity ratios between isomers of each species are calculated from the estimated population at room temperature.

might be estimated from the electrostatic interaction (Coulomb type) between the H atom i of the functional group and the closest H atom j attached to the ring (repulsive): $E_q = \frac{q_i \times q_j}{r_{ij}}$ where q are the calculated charges and r_{ij} is the calculated distance between charges centers. Then, the difference of these electrostatic energies between isomers ΔE_q might be used to account for the destabilization of one compared to the other. On the other hand, atomic charges of bare naphthalene (calculated using the same method: NBO6 at the MP2/aug-cc-pVQZ level) can be used to point out at which position (1- or 2-) the attack of a functional group might be favored. Atomic charges are gathered in Tables S8 and S9 in the Supporting Information; atom labels and relevant distances are shown in Figure 5.

Naphthaldehydes. The 2-naphthaldehyde isomer is calculated to be the most stable form, by far, with an energy difference of more than 6 kJ mol^{-1} with the 1-naphthaldehyde species (Figure 1). This destabilization of 1- over 2- qualitatively agrees with a steric repulsion larger in 1- than in 2-: $\Delta E_q = E_q(\text{cis} - 1-) - E_q(\text{trans} - 2-) = 2.3 \text{ kJ mol}^{-1}$. This isomeric preference is also in line with consideration (i) when looking at the charges distribution in naphthalene (see values in Table S8 in the Supporting Information): the charge of the C–H group at position 2- (C2+H17) is negative (-0.0105 au) while it is positive (0.0201 au) at position 1- (C1+H18). Thus, the electrophilic attack of an aldehyde group on naphthalene would be favored in position 2-. Therefore, both energies and charges agree with consideration (i) to designate isomer 2- as the favored form.

Hydroxynaphthalenes. Here again, isomer 2- is slightly more stable than isomer 1- (0.1 kJ mol^{-1} apart at the hybrid level of theory, see Figure 1). Steric repulsion is also qualitatively pointing toward a destabilization of 1- over 2- with $\Delta E_q = E_q(\text{trans} - 1-) - E_q(\text{cis} - 2-) = 2.9 \text{ kJ mol}^{-1}$. In this case, the sign of charges at positions 1- and 2- in naphthalene is probably a less efficient indicator since consideration (ii) says that an attack of a hydroxy group can either be electron sharing or withdrawing, so it can occur either at position 1- or 2- regardless the sign of the charges. However, it may corroborate that the two hydroxynaphthalene isomers are almost iso-energetic.

Both Molecules. The large difference in electronic structure among naphthaldehyde, hydroxynaphthalene, and bare naphthalene prevents the use of relative energies and local charges differences to assess isomeric preference. However, the global charge redistribution upon functionalization might be a useful qualitative indicator to assess the validity of NBO calculations. Figure 6 displays the molecular electrostatic potentials (MEP) mapped on the $0.001 E_h$ isodensity surface (MP2/aug-cc-pVQZ) for naphthalene and the most stable conformers of hydroxynaphthalene and naphthaldehyde, created by the AIMall visualization software [32]. Looking at the aromatic rings, MEP for hydroxynaphthalene species stay roughly the same as for naphthalene while they get globally less negative for naphthaldehyde with most of the negative charges concentrating themselves on the oxygen atom of the aldehyde group. This tends to indicate that an electrophilic attack would be less efficient on naphthaldehyde than on hydroxynaphthalene or bare naphthalene, which qualitatively agrees with consideration (iii).

4.2. Conformational Landscape

Once confidence is gained in the molecular orbitals and charges derived from NBO calculations, they can be used to discuss the conformational landscape of the four compounds. Indeed, the way that the charges are distributed in the aromatic ring upon functionalization together with estimations of electrostatic interactions can be used for understanding why for each isomer one conformer is more stable than the other. As shown in the following, the situation for isomers 1- is relatively straightforward, while isomers 2- situation calls for further discussion.

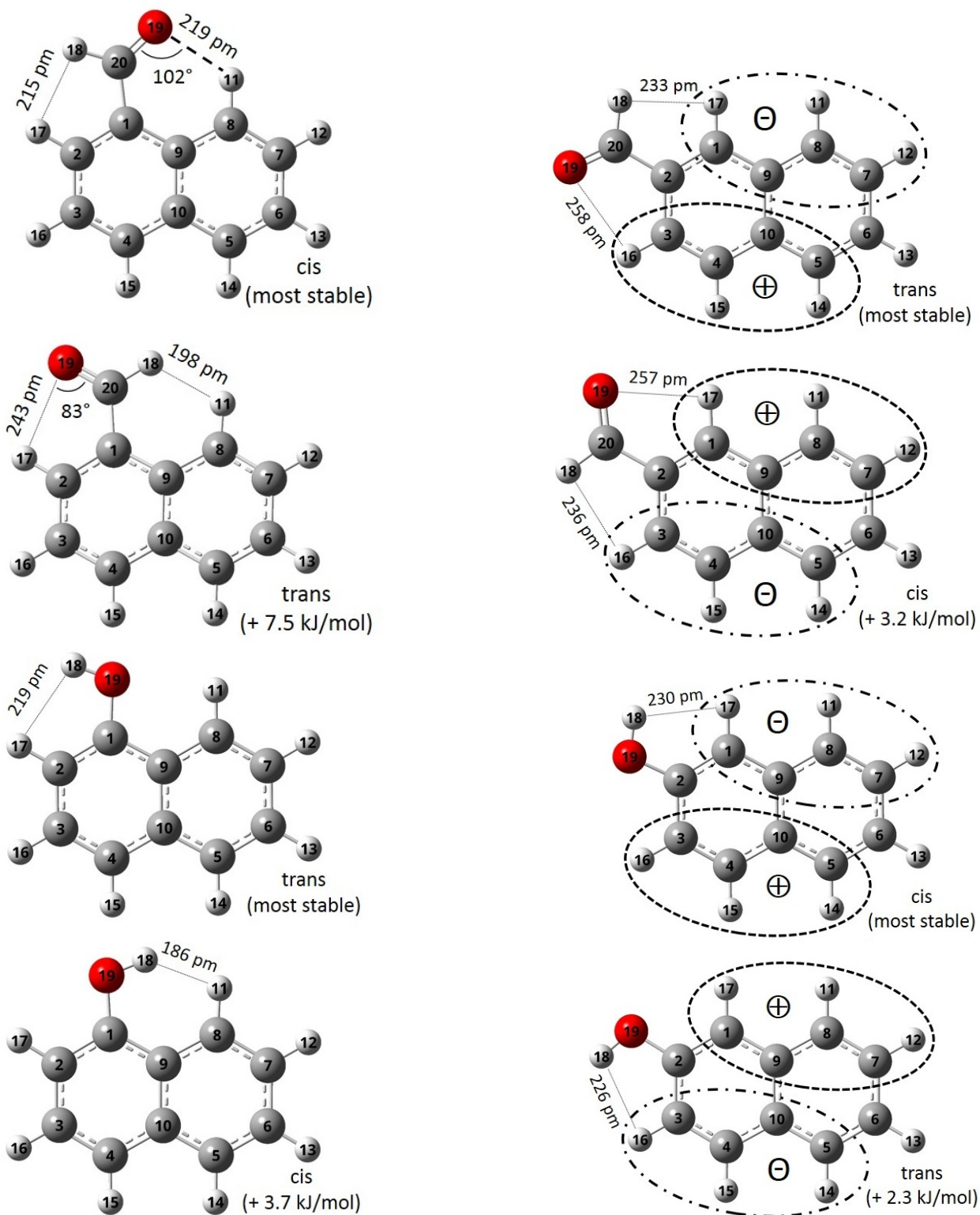


Fig. 5. Calculated structures at equilibrium (MP2/aug-cc-pVQZ) of the two conformers of 1-naphthaldehyde, 2-naphthaldehyde, 1-hydroxynaphthalene, and 2-hydroxynaphthalene. Atom numbering, relative energy (hybrid level), schematic representation of the charges distribution, and relevant topological parameters are indicated.

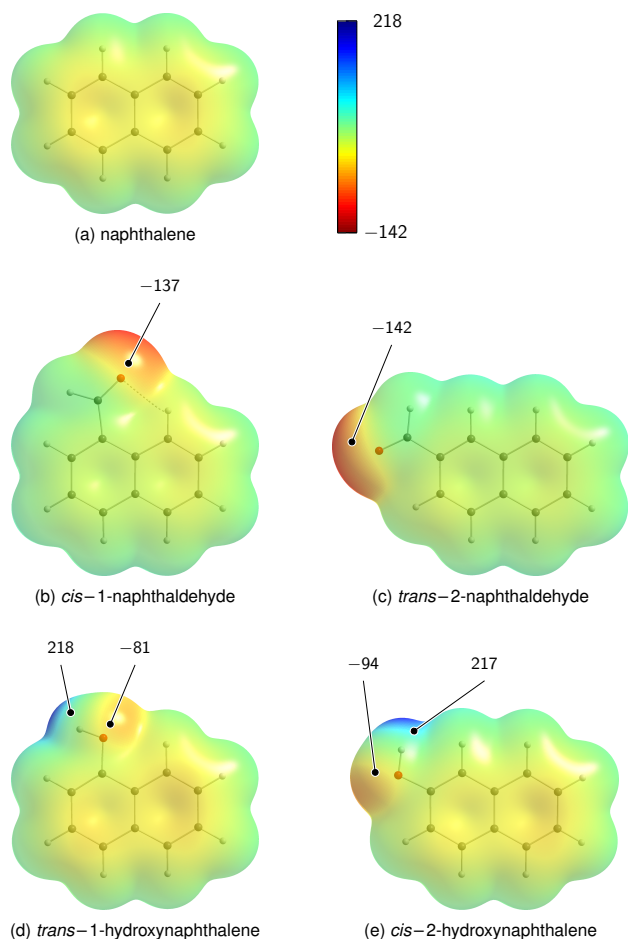


Fig. 6. Molecular electrostatic potentials (MEP) mapped on the $0.001 E_h$ isodensity surface calculated at the MP2/aug-cc-pVQZ level of theory for naphthalene and the most stable conformers of the hydroxynaphthalene and naphthaldehyde. MEP values range from -142 kJ mol^{-1} (red) to 218 kJ mol^{-1} (blue).

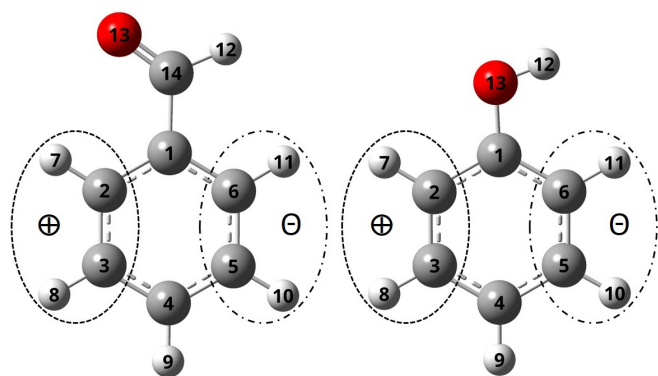


Fig. 7. Schematic representation of the charges distribution in benzaldehyde (left panel) and hydroxybenzene (right panel) as reported in Table 4.

1-Naphthaldehyde. An intramolecular hydrogen bond between the oxygen atom of the aldehyde group and the H11 hydrogen atom attached to the C8 carbon (Figure 5) stabilizes the *cis* conformer compared to the *trans*. The existence of an intramolecular hydrogen bond in the *cis* isomer is evidenced by NBO calculations showing a charge transfer from the O atom lone pair (donor) to the C8-H11 antibonding orbital (acceptor), corresponding to a stabilization energy $E(2)$ of about 5.1 kJ mol^{-1} . This value corresponds to a typically weak intramolecular hydrogen bond, as reflected as well by the long hydrogen bond length, 219 pm (see Figure 5) and its orientation [33]. However, in the *trans* structure, the distance is too long and the angle is too obtuse, preventing the detection of a significant orbital mixing in the NBO analysis ($E(2)$ is smaller than the 2 kJ mol^{-1} threshold) [34]. Qualitatively, the hydrogen bond stabilization energy of 5.1 kJ mol^{-1} accounts for most of the *cis/trans* relative energy (7.5 kJ mol^{-1}). The difference (2.4 kJ mol^{-1}) might be explained by adding an extra destabilization of *trans* over *cis* due to a larger steric repulsion at the H atom side in *trans* than in *cis*: $\Delta E_q = E_q(\text{trans}) - E_q(\text{cis}) = 1.7 \text{ kJ mol}^{-1}$.

1-Hydroxynaphthalene. It is clear from topological observations that no intramolecular hydrogen bond is possible with hydroxy as the functional group. However, a stronger steric repulsion between the H atom of the hydroxy group and its closest H neighbor destabilizes the *cis* conformer compared to the *trans*. This effect is visible when looking at the H–H distance (see Figure 5), which equals 186 pm in the *cis* isomer, a distance that is far below twice the van der Waals radius of an H atom ($2 \times 120 = 240 \text{ pm}$), while it is significantly longer in the *trans* isomer (219 pm). Here, the destabilization by electrostatic interaction with $\Delta E_q = E_q(\text{cis}) - E_q(\text{trans}) = 2.2 \text{ kJ mol}^{-1}$ accounts for most of the *cis/trans* relative energy (3.7 kJ mol^{-1}).

Table 4. Calculated Sum of Charges around the Functional Group in Functionalized Benzene (see Tables S8 and S9 in the Supporting Information for atomic charges and see Figure 7 for atoms labelling). Values are given in atomic units.

atoms	benzaldehyde	hydroxybenzene
“closest neighbors”		
H12 side ^a	0.000	-0.103
opposite ^b	0.025	-0.060
Δq^c	-0.025	-0.043
“wider view”		
H12 side ^d	0.003	-0.079
opposite ^e	0.036	-0.035
Δq^c	-0.033	-0.044

^a C6+H11

^b C2+H7

^c $\Delta q = (\text{H12 side} - \text{opposite})$

^d C6+H11+C5+H10

^e C2+H7+C3+H8

Isomers 2- A closer look at charges seems necessary to bring some understanding in these conformational landscapes. In addition to simple electrostatic interactions between local charges, longer range effects might be expected because of the aromatic system of such species. Contrary to isomers 1- for which geometrical asymmetry around the functional groups induces significant differences between conformers (stabilization/destabilization due to attractive/repulsive interactions), isomers 2- with conformers having quasi-equal topological parameters appears as ideal systems to eventually study the link between charges distribution and conformational preferences.

The more simple functionalized benzenes (*i.e.*, benzaldehyde and hydroxybenzene; see Tables S8 and S9 in the Supporting Information) may be used as reference systems. In the case of benzene, owing to its higher symmetry, a 180° rotation of the functional group gives rise to two iso-energetic mirror images, *i.e.* functionalized benzenes have no conformational forms. Then, the charge distribution within the aromatic ring (uniform in bare benzene) perturbed by the functional group can be evaluated and may serve as reference. In both functional groups, the H atom is a carrier of positive charges (H12; see Tables S8 and S9). The sum of charges on the closest neighbor C–H groups in the ring (see Table 4) is less positive (or more negative) at the side of H12 (C6+H11) than at its opposite side (C2+H7). However, electrons delocalization associated with aromaticity should facilitate charge transfer between members of the ring. Thus, it appears relevant to take this effect into account by looking at a “wider view”, *i.e.*, by adding charges of the next C–H group to those of the closest neighbor (see Figure 7). The same results are observed in this “wider view”, as shown in Table 4. Such asymmetric charge distribution within the aromatic ring from one side of the functional group to the other is most probably due to the repulsive action of H12 as a positive charge center so that an energetic stabilization of the whole system is achieved by transferring some of the ring positive charge to the opposite side, which is facilitated by aromaticity. Then, such stabilization evidenced by an asymmetry of charges is expected in functionalized naphthalene, the most stable conformer being the one showing the same trend or at least the most pronounced one.

2-Hydroxynaphthalene. The *cis* conformer is calculated to be the most stable form with an energy difference of 2.3 kJ mol⁻¹. It qualitatively agrees with the electrostatic interaction difference of $\Delta E_q = E_q(\text{trans}) - E_q(\text{cis}) = 2.8 \text{ kJ mol}^{-1}$. Concerning charges distribution, by looking only at the closest neighbor C–H groups, there is a positive charge deficit on the side of the hydroxyl hydrogen atom (H18) for both conformers (see Table 5), which fails to correlate with the conformational preference. On the contrary, the asymmetry of charges is slightly more pronounced in the less stable conformer (*trans*). However, in the “wider view” including the next groups (see Figure 5), the positive charge deficit on the side of H18 is more pronounced for the most stable *cis* conformer: (H18 side - opposite) = -0.069 au for *cis* against -0.024 au for *trans*. This could be explained by the peculiar π delocalization linked to aromaticity. Compared to a single aromatic ring (benzox species), the charge transfer within the π orbitals network might be less efficient in a doubly

Table 5. Calculated Sum of Charges around the Functional Group in Functionalized Naphthalene (see Tables S8 and S9 in the Supporting Information for atomic charges and Figure 5 for atoms labelling). Most stable conformers are specified in bold. Values are given in atomic units.

	naphthaldehyde		hydroxynaphthalene	
	trans-2	<i>cis-2</i>	cis-2	<i>trans-2</i>
“closest neighbors”				
H18 side	0.098 ^a	-0.005 ^b	-0.130 ^a	-0.071 ^b
opposite	0.028 ^b	0.104 ^a	-0.070 ^b	0.000 ^a
Δq^c	+0.070	-0.111	-0.060	-0.071
“wider view”				
H18 side	0.027 ^d	0.004 ^e	-0.099 ^d	-0.027 ^e
opposite	0.121 ^e	0.063 ^d	-0.039 ^e	0.003 ^d
Δq^c	-0.094	-0.059	-0.069	-0.024

^a C1+H17

^b C3+H16

^c $\Delta q = (\text{H18 side} - \text{opposite})$

^d C1+H17+C9+C8+H11+C7+H12

^e C3+H16+C4+H15+C10+C5+H14

aromatic system (naphthox species), so that the “closest neighbors” might be still strongly influenced by the local charges distribution within the functional group and only a “wider view” permits to retrieve the asymmetry of charges. Therefore, the conformational preference, evidenced by energetic considerations, could be correlated to an asymmetry of charges within the aromatic systems only on the basis of this hypothesis.

2-Naphthaldehyde. The *trans* conformer is calculated to be the most stable form with an energy difference of 3.2 kJ mol⁻¹. It qualitatively agrees with the electrostatic interaction difference of $\Delta E_q = E_q(\text{trans}) - E_q(\text{cis}) = 1.8 \text{ kJ mol}^{-1}$. In this case as well, the charge distribution at the closest neighbor C–H groups is pointing to the *cis* conformer as the most stable (see Table 5), contrary to energetic considerations. However, here again, the reverse situation is observed in the “wider view” in agreement with energies (see Figure 5), (*i.e.*, a positive charge deficit at the H18 side is more pronounced for the most stable *trans* conformer), so that the same hypothesis of a stabilization by charge transfer within the whole aromatic systems may apply.

5. Conclusions

The spectra of four oxygen-containing naphthalene species – 1- and 2-hydroxynaphthalene, and 1- and 2-naphthaldehyde – have been recorded in the microwave, millimeter-wave, and infrared spectral ranges. Pure rotational and vibrational assignments have been supported by high level quantum chemical calculations, using a hybrid method based on MP2 (harmonic) and DFT (anharmonic) calculations. The pure rotation and rotation-vibration spectra recorded using various experimental

setups allowed us to unambiguously identify the most stable conformers of each species, in excellent agreement with the calculated results for the energetic relative stabilities. The isomeric preference evidenced by relative free energies (isomers 2- are more stable than isomers 1-) has been rationalized in terms of charge distribution within the aromatic rings. In turn, confidence has been gained in the molecular orbitals and charges out of NBO calculations. The comparison with similar calculations for simpler structures (functionalized benzene) leads us to propose an explanation for the conformational preferences of each species on the basis of the influence of the functional groups on the charges distribution within the aromatic rings, providing new insights in the physicochemical properties of isomeric and conformational landscapes of these functionalized PAHs compounds. Finally, our study provides all necessary information for an active search of these molecules in atmospheric and astrophysical environments.

Acknowledgements

This work was supported by the Programme National “Physique et Chimie du Milieu Interstellaire” (PCMI) of CNRS/INSU with INC/INP cofunded by CEA and CNES; by the CaPPA project (Chemical and Physical Properties of the Atmosphere); and by the CPER ClimiBio funded by the French National Research Agency (ANR) through the PIA (Programme d’Investissement d’Avenir), under contract ANR-11-LABX-0005-01, the I-SITE ULNE/ANR-16-IDEX-0004 ULNE, and the Regional Council Hauts-de-France and the European Funds for Regional Economic Development (FEDER). Part of this work is supported by “Investissements d’Avenir” LabEx PALM (ANR-10-LABX-0039-PALM).

References

1. A. T. Balaban, D. C. Oniciu, and A. R. Katritzky. Aromaticity as a cornerstone of heterocyclic chemistry. *Chem. Rev.*, **104**, 2777–2812 (2004). doi:10.1021/cr0306790.
2. A. G. G. M. Tielens. Interstellar polycyclic aromatic hydrocarbon molecules. *Annu. Rev. Astron. Astrophys.*, **46**, 289–337 (2008). doi:10.1146/annurev.astro.46.060407.145211.
3. A. Léger and J. L. Puget. Identification of the unidentified IR emission features of interstellar dust. *Astron. Astrophys.*, **137**(1), L5–L8 (1984).
4. L. J. Allamandola, A. G. G. M. Tielens, and J. R. Barker. Polycyclic aromatic hydrocarbons and the unidentified infrared emission bands - auto exhaust along the milky-way. *Astrophys. J.*, **290**(1), L25–L28 (1985). doi:10.1086/184435.
5. F. Salama. PAHs in astronomy - a review. *Proc. Int. Astron. Union*, **4**(S251), 357–366 (2008). doi:10.1017/S1743921308021960.
6. B. A. McGuire, A. M. Burkhardt, S. Kalenskii, C. N. Shingledecker, A. J. Remijan, E. Herbst, and M. C. McCarthy. Detection of the aromatic molecule benzonitrile (C₆H₅CN) in the interstellar medium. *Science*, **359**(6372), 202–205 (2018). doi:10.1126/science.aao4890.
7. K. Ravindra, R. Sokhi, and R. Van Grieken. Atmospheric polycyclic aromatic hydrocarbons: Source attribution, emission factors and regulation. *Atmos. Environ.*, **42**(13), 2895–2921 (2008). doi:10.1016/j.atmosenv.2007.12.010.
8. S. Tomaz, P. Shahpoury, J.-L. Jaffrezo, G. Lammel, E. Perraudin, E. Villenave, and A. Albinet. One-year study of polycyclic aromatic compounds at an urban site in grenoble (france): Seasonal variations, gas/particle partitioning and cancer risk estimation. *Sci. Total Environ.*, **565**, 1071–1083 (2016). doi:10.1016/j.scitotenv.2016.05.137.
9. I. J. Keyte, R. M. Harrison, and G. Lammel. Chemical reactivity and long-range transport potential of polycyclic aromatic hydrocarbons - a review. *Chem. Soc. Rev.*, **42**(24), 9333–9391 (2013). doi:10.1039/c3cs60147a.
10. B. Yuan, W. W. Hu, M. Shao, M. Wang, W. T. Chen, S. H. Lu, L. M. Zeng, and M. Hu. Voc emissions, evolutions and contributions to soa formation at a receptor site in eastern china. *Atmos. Chem. Phys.*, **13**(17), 8815–8832 (2013). doi:10.5194/acp-13-8815-2013.
11. T. Hüffer, H. Sun, J. D. Kubicki, T. Hofmann, and M. Kah. Interactions between aromatic hydrocarbons and functionalized C₆₀ fullerenes - insights from experimental data and molecular modelling. *Environ. Sci.: Nano*, **4**, 1045–1053 (2017). doi:10.1039/C7EN00139H.
12. M. J. Frisch, G. W. Trucks, H. B. Schlegel, G. E. Scuseria, M. A. Robb, J. R. Cheeseman, G. Scalmani, V. Barone, G. A. Petersson, H. Nakatsuji, X. Li, M. Caricato, A. V. Marenich, J. Bloino, B. G. Janesko, R. Gomperts, B. Mennucci, H. P. Hratchian, J. V. Ortiz, A. F. Izmaylov, J. L. Sonnenberg, D. Williams-Young, F. Ding, F. Lipparini, F. Egidi, J. Goings, B. Peng, A. Petrone, T. Henderson, D. Ranasinghe, V. G. Zakrzewski, J. Gao, N. Rega, G. Zheng, W. Liang, M. Hada, M. Ehara, K. Toyota, R. Fukuda, J. Hasegawa, M. Ishida, T. Nakajima, Y. Honda, O. Kitao, H. Nakai, T. Vreven, K. Throssell, J. A. Montgomery, Jr., J. E. Peralta, F. Ogliaro, M. J. Bearpark, J. J. Heyd, E. N. Brothers, K. N. Kudin, V. N. Staroverov, T. A. Keith, R. Kobayashi, J. Normand, K. Raghavachari, A. P. Rendell, J. C. Burant, S. S. Iyengar, J. Tomasi, M. Cossi, J. M. Millam, M. Klene, C. Adamo, R. Cammi, J. W. Ochterski, R. L. Martin, K. Morokuma, O. Farkas, J. B. Foresman, and D. J. Fox. *Gaussian 16* Revision C.01 (2016). Gaussian Inc.: Wallingford, CT.
13. T. H. Dunning. Gaussian basis sets for use in correlated molecular calculations. I. The atoms boron through neon and hydrogen. *J. Chem. Phys.*, **90**(2), 1007–1023 (1989). doi:10.1063/1.456153.
14. M. Biczysko, P. Panek, G. Scalmani, J. Bloino, and V. Barone. Harmonic and anharmonic vibrational frequency calculations with the double-hybrid b2pyp method: Analytic second derivatives and benchmark studies. *J. Chem. Theory Comput.*, **6**(7), 2115–2125 (2010). doi:10.1021/ct100212p.
15. S. Grimme and M. Steinmetz. Effects of london dispersion correction in density functional theory on the structures of organic molecules in the gas phase. *Phys. Chem. Chem. Phys.*, **15**(38), 16031–16042 (2013). doi:10.1039/c3cp52293h.
16. M. Goubet, P. Soulard, O. Pirali, P. Asselin, F. Réal, S. Gruet, T. R. Huet, P. Roy, and R. Georges. Standard free energy of the equilibrium between the trans-monomer and the cyclic-dimer of acetic acid in the gas phase from infrared spectroscopy. *Phys. Chem. Chem. Phys.*, **17**(11), 7477–7488 (2015). doi:10.1039/c4cp05684a.
17. S. Bteich, M. Goubet, R. A. Motiyenko, L. Margules, and T. R. Huet. Vibrational dynamic and spectroscopic molecular parameters of trans-methylglyoxal, a gaseous precursor of secondary organic aerosols. *J. Mol. Spectrosc.*, **348**(SI), 124–129 (2018). doi:10.1016/j.jms.2017.12.007.
18. S. Gruet, M. Goubet, and O. Pirali. High resolution measurements supported by electronic structure calculations of two naphthalene derivatives: [1,5]- and [1,6]-naphthyridine - estimation of the zero point inertial defect for planar polycyclic aromatic compounds. *J. Chem. Phys.*, **140**(23), 234308 (2014). doi:10.1063/1.4882652.
19. H.-J. Werner, P. J. Knowles, G. Knizia, F. R. Manby, M. Schütz, and et al. Molpro, version 2019.2, a package of ab initio programs (2019). <https://www.molpro.net>.
20. Q. Ma and H.-J. Werner. Explicitly correlated local coupled-cluster methods using pair natural orbitals. *WIREs Comput. Mol. Sci.*, **8**(6), e1371 (2018). URL: <https://onlinelibrary.wiley.com/doi/abs/10.1002/wcms.1371>, doi:10.1002/wcms.1371.
21. H. J. Werner, C. Köppl, Q. Ma, and M. Schwilk. *Explicitly correlated local electron correlation methods in Fragmentation: Towards Accurate Calculations on Complex Molecular Systems*. Wiley (2017).
22. E. D. Glendening, J. K. Badenhop, A. E. Reed, J. E. Carpenter, J. A. Bohmann, C. M. Morales, C. R. Landis, and F. Weinhold. *NBO 6.0*. (2013). Theoretical Chemistry Institute, University of Wisconsin: Madison, WI, 2013; <http://nbo6.chem.wisc.edu/>.

23. S. Kassi, D. Petitprez, and G. Włodarczak. Microwave fourier transform spectroscopy of t-butylchloride and t-butylbromide isotopic species. *J. Mol. Struct.*, **517–518**, 375–386 (2000). doi:10.1016/S0022-2860(99)00296-3.
24. M. Tudorie, L. H. Coudert, T. R. Huet, D. Jegouso, and G. Sedes. Magnetic hyperfine coupling of a methyl group undergoing internal rotation: A case study of methyl formate. *J. Chem. Phys.*, **134**(7), 074314 (2011). doi:10.1063/1.3554419.
25. S. Kassi, D. Petitprez, and G. Włodarczak. Microwave spectrum of isotopic species of urea (NH₂)₂CO. *J. Mol. Spectrosc.*, **228**(2), 293–297 (2004). doi:10.1016/j.jms.2004.05.002.
26. O. Pirali, M. Goubet, V. Boudon, L. D'Accolti, C. Fusco, and C. Annese. Characterization of isolated 1-aza-adamantan-4-one (C₉H₁₃NO) from microwave, millimeter-wave and infrared spectroscopy supported by electronic structure calculations. *J. Mol. Spectrosc.*, **338**, 6–14 (2017). doi:10.1016/j.jms.2017.04.020.
27. M. A. Martin-Drumel, O. Pirali, Y. Loquais, C. Falvo, and P. Bréchnignac. Lowest energy vibrational modes of some naphthalene derivatives: Azulene, quinoline, isoquinoline - Experiment and theory. *Chem. Phys. Lett.*, **557**, 53–58 (2013). doi:10.1016/j.cplett.2012.12.022.
28. S. Gruet, O. Pirali, M. Goubet, D. W. Tokaryk, and P. Brechnignac. High-resolution far-infrared spectroscopy of n-substituted two-ring polycyclic aromatic hydrocarbons: An extended study. *J. Phys. Chem. A*, **120**(1), 95–105 (2016). doi:10.1021/acs.jpca.5b09626.
29. W. Łodyga, M. Kręglewski, P. Pracna, and Š. Urban. Advanced graphical software for assignments of transitions in rovibrational spectra. *J. Mol. Spectrosc.*, **243**(2), 182–188 (2007). doi:10.1016/j.jms.2007.02.004.
30. C. M. Western. Pgopher: A program for simulating rotational, vibrational and electronic spectra. *J. Quant. Spectrosc. Radiat. Transfer*, **186**(SI), 221–242 (2017). doi:10.1016/j.jqsrt.2016.04.010.
31. H. M. Pickett. The fitting and prediction of vibration-rotation spectra with spin interactions. *J. Mol. Spectrosc.*, **148**(2), 371–377 (1991). doi:10.1016/0022-2852(91)90393-0.
32. T. A. Keith. Aimall (version 19.10.12), todd a. keith, tk gristmill software: Overland park ks (2019). URL: <http://aim.tkgristmill.com>.
33. S. Wojtulewski and S. J. Grabowski. Blue-shifting C–H...Y intramolecular hydrogen bonds – dft and aim analyses. *Chem. Phys.*, **309**(2), 183–188 (2005). doi:10.1016/j.chemphys.2004.09.008.
34. A. E. Reed, L. A. Curtiss, and F. Weinhold. Interamolecular interactions from a natural bond orbital, donor-acceptor viewpoint. *Chem. Rev.*, **88**, 899–926 (1988). doi:10.1021/cr00088a005.

SUPPORTING INFORMATION

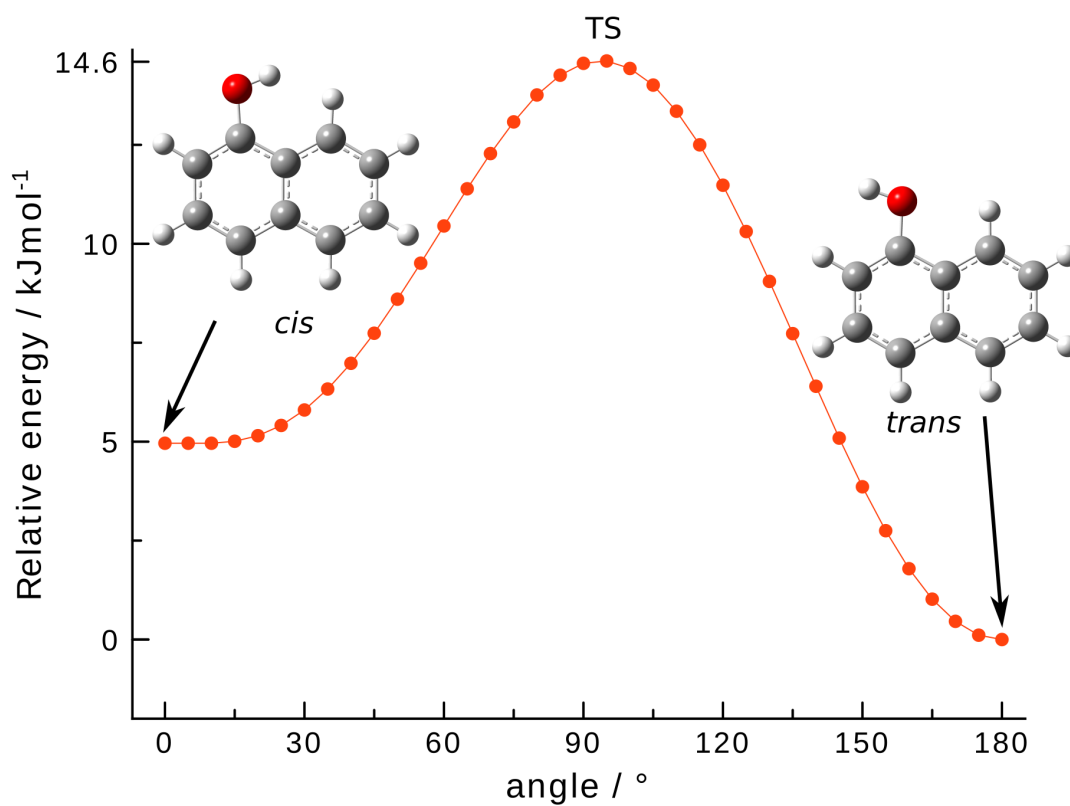


Fig. S1. Conformational landscape of 1-hydroxynaphthalene: Potential energy curve resulting from the MP2/cc-pVTZ calculation (values at equilibrium). Energies are indicated relative to *trans*-1-hydroxynaphthalene. Angle values are corresponding to the C-C-O-H dihedral angle.

Table S1. Results from the energy calculations on the hydroxynaphthalene molecules. ΔE values are relative to the lower energy conformer of each species.

		1-hydroxynaphthalene			2-hydroxynaphthalene			
		<i>cis</i>	TS	<i>trans</i>	<i>cis</i>	TS	<i>trans</i>	
B97-1 ^a	E_{eq}	/E _h	-461.1344478	-461.1302821	-461.1364003	-461.1368716	-461.1301344	-461.1359809
	E_{ZPE}	/E _h	-460.9839570	-460.9802350	-460.9854290	-460.9860680	-460.9803100	-460.9853160
	ω	/cm ⁻¹	87.70	330.20	140.10	122.10	350.90	122.30
	ΔE_{eq}	/kJ mol ⁻¹	5.1	16.1	0	0	17.69	2.34
ΔE_{ZPE}	/cm ⁻¹	429	1,343	0	0	1,478.64	195.49	
	/kJ mol ⁻¹	3.9	11.7 ^d	0	0	13.0 ^d	1.97	
	/cm ⁻¹	323	975 ^d	0	0	1,088 ^d	165.04	
MP2 ^b	E_{eq}	/E _h	-460.1680434	-460.1643641	-460.1699345	-460.1698188	-460.1636588	-460.1688217
	E_{ZPE}	/E _h	-460.0171110	-460.0135300	-460.0183590	-460.0184030	-460.0130740	-460.0175580
	ω	/cm ⁻¹	-57.20	332.10	138.40	120.90	340.90	120.90
	ΔE_{eq}	/kJ mol ⁻¹	5.0	14.6	0	0	16.2	2.6
ΔE_{ZPE}	/cm ⁻¹	415	1,223	0	0	1,352	219	
	/kJ mol ⁻¹	3.3	10.7 ^d	0	0	11.9 ^d	2.2	
	/cm ⁻¹	274	895 ^d	0	0	994 ^d	185	
hybrid ^c	E_{ZPE}	/E _h	-460.0175526	-460.0143170	-460.0189632	-460.0190152	-460.0138344	-460.0181568
	ΔE_{ZPE}	/kJ mol ⁻¹	3.7	10.2 ^d	0	0	11.5 ^d	2.3
		/cm ⁻¹	310	855 ^d	0	0	962 ^d	188
	Pop. ^e	/%	18		82	71		29
ΔE_{12} ^f	/kJ mol ⁻¹	-	-	0.1	0	-	-	
	/cm ⁻¹	-	-	11	0	-	-	

^a B97-1/cc-pVTZ harmonic calculation ^b MP2/cc-pVTZ harmonic calculation ^c hybrid B97-1/MP2/cc-pVTZ calculation, see text^d For the transition states, ΔE_{ZPE} is calculated according to the formula $\Delta E_{\text{ZPE}} = E(\text{TS}) - E(\text{GS}) - \omega(\text{TS})/2$ ^e Population at 300 K^f Energy difference between the lower state conformers of 1- and 2-hydroxynaphthalene

Table S2. Results from the energy calculations on the naphthaldehyde molecules. ΔE values are relative to the lower energy conformer of each species.

		1-naphthaldehyde			2-naphthaldehyde		
		<i>cis</i>	TS	<i>trans</i>	<i>cis</i>	TS	<i>trans</i>
B97-1 ^a	E_{eq}	-499.2369962	-499.2233235	-499.2339542	-499.2386084	-499.2243882	-499.2398478
	E_{ZPE}	-499.080972	-499.06842	-499.078206	-499.082942	-499.069577	-499.084122
	ω	85.6	158.6	84.4	86.3	173.9	78.8
	ΔE_{eq}	0	35.9	8.0	3.3	40.6	0
		0	3001	668	272	3393	0
	ΔE_{ZPE}	0	32.0	7.3	3.1	37.1	0
	0	2676	607	259	3105	0	
MP2 ^b	E_{eq}	-498.1872922	-498.1752513	-498.1841598	-498.1880392	-498.1751578	-498.1893045
	E_{ZPE}	-498.030536	-498.01949	-498.027667	-498.031632	-498.019528	-498.032875
	ω	79.3	145.3	65.7	83.7	162.9	77
	ΔE_{eq}	0	31.6	8.2	3.3	37.1	0
		0	2643	687	278	3105	0
	ΔE_{ZPE}	0	28.1	7.5	3.3	34.1	0
	0	2352	630	273	2848	0	
hybrid ^c	E_{ZPE}	-498.031268	-498.0203478	-498.0284116	-498.0323728	-498.0203466	-498.0335787
	ΔE_{ZPE}	0	27.7	7.5	3.2	33.7	0
		0	2317	627	265	2817	0
	Pop. ^e	95	5	5	22	22	78
ΔE_{12} ^f	/kJ mol ⁻¹	6.1	-	-	-	-	0
	/cm ⁻¹	507	-	-	-	-	0

^a B97-1/cc-pVTZ harmonic calculation ^b MP2/cc-pVTZ harmonic calculation ^c hybrid B97-1/MP2/cc-pVTZ calculation, see text

^d For the transition states, ΔE_{ZPE} is calculated according to the formula $\Delta E_{\text{ZPE}} = E(\text{TS}) - E(\text{GS}) - \omega(\text{TS})/2$ ^e Population at 300 K

^f Energy difference between the lower state conformers of 1- and 2-naphthaldehyde

Table S3. Energies in kJ mol^{-1} of the four conformers of naphthaldehyde relative to the most stable isomer *trans* 2-naphthaldehyde computed at various levels of theory. CBS values are extrapolated from aug-cc-pVTZ and aug-cc-pVQZ basis set calculations.

Method	1-naphthaldehyde		2-naphthaldehyde	
	<i>cis</i>	<i>trans</i>	<i>cis</i>	<i>trans</i>
MP2/cc-pVTZ ^a	5.3	13.5	3.3	0.0
MP2/CBS	5.8	13.9	3.6	0.0
CCSD(T)/CBS	6.6	14.0	3.6	0.0
PNO-LCCSD(T)-F12/aug-cc-pVTZ	6.7	13.8	3.5	0.0

^aSee values reported in Table S2.

Table S4. Calculated IR fundamental vibrational modes of *cis*-1-naphthaldehyde and *trans*-2-naphthaldehyde and comparison with proposed experimental assignments. Energies are given in cm^{-1} intensities in km mol^{-1} .

ν	sym.	<i>cis</i> -1-naphthaldehyde						<i>trans</i> -2-naphthaldehyde					
		B97-1		MP2		Hybrid	Exp.	B97-1		MP2		Hybrid	Exp.
		E_h	E_a	E_h	I_h			E	E	E_h	E_a		
1	A'	3224	3070	3268	7.5	3114	3064	3189	3062	3234	3.5	3107	
2	A'	3184	3062	3232	8.5	3109	3064	3185	3061	3233	11.6	3109	3070
3	A'	3182	3077	3230	14.0	3125	3064	3173	3052	3220	13.4	3099	2980
4	A'	3167	3032	3215	10.5	3080	3064	3161	3045	3205	0.7	3089	
5	A'	3158	3055	3202	6.4	3099	3064	3159	3009	3203	5.3	3053	
6	A'	3154	3009	3200	0.4	3055	3064	3155	3013	3200	2.3	3058	
7	A'	3150	3018	3195	2.7	3064	3064	3143	2998	3184	6.1	3039	
8	A'	2861	2684	2936	118.0	2759	2721	2870	2680	2949	108.4	2760	2717
9	A'	1772	1743	1740	161.0	1712	1715	1781	1752	1745	231.6	1717	1720
10	A'	1653	1611	1669	3.7	1628		1660	1620	1678	6.0	1638	1637
11	A'	1626	1592	1625	7.0	1591	1601	1635	1599	1635	4.5	1600	1603
12	A'	1605	1566	1619	11.1	1580	1583	1606	1572	1617	5.2	1582	
13	A'	1542	1504	1561	29.8	1523	1516	1539	1504	1556	2.2	1521	
14	A'	1488	1456	1495	0.9	1462		1495	1467	1506	10.7	1478	1468
15	A'	1474	1437	1491	7.3	1454	1457	1471	1439	1491	12.7	1459	1447
16	A'	1438	1405	1481	5.2	1448	1457	1424	1408	1472	2.5	1456	
17	A'	1418	1378	1443	2.9	1404		1401	1363	1456	0.1	1418	
18	A'	1388	1351	1435	2.8	1399		1388	1357	1416	1.6	1385	
19	A'	1368	1335	1414	2.6	1381		1369	1338	1374	25.2	1343	1347
20	A'	1292	1249	1290	2.1	1248		1285	1271	1294	37.5	1279	1262
21	A'	1237	1211	1266	18.6	1240	1220?	1278	1255	1284	4.5	1261	
22	A'	1232	1204	1240	16.5	1212	1214?	1236	1212	1259	0.0	1235	
23	A'	1189	1165	1192	12.7	1168	1171	1184	1163	1195	41.5	1174	1154
24	A'	1184	1155	1181	2.1	1152		1172	1154	1178	0.1	1160	
25	A'	1165	1142	1166	3.4	1143		1165	1166	1161	0.1	1163	
26	A'	1097	1077	1103	2.3	1084		1137	1124	1136	21.6	1123	1121
27	A'	1069	1041	1074	35.4	1046	1056	1039	1022	1047	2.3	1030	
28	A'	1042	1012	1050	3.9	1020		969	956	970	1.0	956	
29	A'	895	881	893	15.3	878	887	891	879	893	6.2	881	882
30	A'	805	795	807	0.7	797		785	774	789	21.2	778	785
31	A'	718	704	718	15.1	704	712	766	755	767	23.7	757	763
32	A'	659	649	656	18.3	646	647	640	633	632	1.9	626	
33	A'	553	547	551	2.5	544	548	612	606	609	3.6	603	603
34	A'	502	495	498	1.6	492	497	520	514	516	0.1	511	
35	A'	437	433	434	1.5	431	430	390	389	386	5.5	384	388
36	A'	366	362	360	0.1	356		349	350	348	2.8	349	
37	A'	218	166	219	6.5	166	225 ?	177	184	175	6.0	183	177
38	A''	1022	1003	1015	0.4	995		1028	1011	1018	1.1	1001	
39	A''	1016	1011	977	0.7	973		1002	994	968	0.1	961	
40	A''	995	994	962	0.8	962		998	995	960	0.1	957	
41	A''	979	975	951	0.1	947		972	968	948	1.5	943	
42	A''	937	930	909	0.0	902		918	909	878	9.7	869	?
43	A''	893	880	870	0.0	856		880	864	859	20.1	843	857
44	A''	823	818	806	91.7	801	802	843	831	835	35.4	822	820
45	A''	792	777	755	8.0	740		788	778	754	27.7	745	742
46	A''	753	740	725	0.3	711		760	751	726	0.2	717	
47	A''	639	637	614	0.0	612		645	640	620	0.9	614	
48	A''	539	529	529	6.0	520	525	512	508	502	0.3	497	
49	A''	479	472	469	0.4	462		485	479	477	15.9	471	472
50	A''	414	408	407	3.6	402	400	401	395	393	0.0	387	
51	A''	273	266	265	5.7	258	255	297	289	293	3.3	285	
52	A''	181	178	178	0.9	175		192	188	187	4.7	184	181
53	A''	152	146	147	3.7	141	143	160	156	157	4.8	152	152
54	A''	86	76	79	3.5	70	76	79	78	77	1.6	76	

Note. h in E_h stands for harmonic, and a in E_a for anharmonic

Table S5. Rotational constants of the four studied species at various stages of the calculations and comparison with the experimental values.

	MP2 B_e	Δ^a	hybrid ^b B_0	exp. B_0	δ_{hybrid}^c / %
<i>trans</i>-1-hydroxynaphthalene					
A / MHz	1947	-14	1934	1942.100623 (53)	0.42
B / MHz	1140	-8	1132	1133.623211 (21)	0.14
C / MHz	719	-5	714	716.017762 (14)	0.28
<i>cis</i>-2-hydroxynaphthalene					
A / MHz	2862	-25	2837	2849.155543 (64)	0.43
B / MHz	828	-4	823	824.632161 (25)	0.20
C / MHz	642	-4	638	639.723697 (15)	0.27
<i>cis</i>-1-naphthaldehyde					
A / MHz	1389	-8	1380	1384.40872 (21)	0.32
B / MHz	1004	-8	995	999.015243 (71)	0.40
C / MHz	583	-4	579	580.551953 (19)	0.27
<i>trans</i>-2-naphthaldehyde					
A / MHz	2824	-22	2802	2810.43194 (15)	0.30
B / MHz	583	-3	580	581.095981 (24)	0.19
C / MHz	483	-3	480	481.700564 (18)	0.35

$$^a \Delta = B_0 - B_e \quad ^b B_0^{\text{hybrid}} = B_e^{\text{MP2}} - (B_e^{\text{B97-1}} - B_0^{\text{B97-1}})$$

$$^c \delta_{\text{hybrid}} = (B_{\text{exp.}} - B_{\text{hybrid}}) / B_{\text{hybrid}} \times 100$$

Table S6. Rotational constants of *trans*-1-hydroxynaphthalene in the ground and excited vibrational states. Error (1σ) on experimental parameters are given between parenthesis in units of the last digit.

	MP2	Δ^a	hybrid ^b	scaled ^c	exp.	δ_{hybrid}^d / %	δ_{scaled}^e / %
Equilibrium							
A_e / MHz	1947						
B_e / MHz	1140						
C_e / MHz	719						
Ground state							
A_0 / MHz			1934		1942.100623 (53)	0.42	
B_0 / MHz			1132		1133.623211 (21)	0.16	
C_0 / MHz			714		716.017762 (14)	0.26	
$\nu_{51} = 1$							
E / cm^{-1}			136				
A_v / MHz		-14	1933	1941	1941.73727 (53)	0.44	0.015
B_v / MHz		-8	1132	1134	1132.951050 (68)	0.11	-0.051
C_v / MHz		-4	715	717	716.402565 (43)	0.23	-0.030
$\nu_{50} = 1$							
E / cm^{-1}			166.4				
A_v / MHz		-16	1931	1939	1939.60653 (22)	0.44	0.016
B_v / MHz		-6	1133	1135	1134.394385 (36)	0.11	-0.053
C_v / MHz		-4	715	717	716.571336 (25)	0.23	-0.032
$\nu_{51} = 2$							
E / cm^{-1}			272.2				
A_v / MHz		-15	1933	1941	1941.1817 (43)	0.43	0.003
B_v / MHz		-9	1131	1133	1132.3400 (16)	0.12	-0.042
C_v / MHz		-4	715	717	716.785770 (55)	0.23	-0.027
$\nu_{50} = 2$							
E / cm^{-1}			332.8				
A_v / MHz		-19	1929	1937	1937.1523 (11)	0.44	0.019
B_v / MHz		-6	1134	1136	1135.16069 (49)	0.11	-0.052
C_v / MHz		-3	715	717	717.121942 (55)	0.23	-0.030

$$^a \Delta = B_0 - B_e \quad ^b B_0^{\text{hybrid}} = B_e^{\text{MP2}} - (B_e^{\text{B97-1}} - B_0^{\text{B97-1}})$$

$$^c B_{\text{scaled}} = B_v^{\text{hybrid}} \times B_0^{\text{exp}} / B_0^{\text{hybrid}}$$

$$^d \delta_{\text{hybrid}} = (B_{\text{exp.}} - B_{\text{hybrid}}) / B_{\text{hybrid}} \times 100$$

$$^e \delta_{\text{scaled}} = (B_{\text{exp.}} - B_{\text{scaled}}) / B_{\text{scaled}} \times 100$$

Table S7. Full set of rotational parameters (in MHz) for *trans*-1-hydroxynaphthalene in excited vibrational states. Error (1σ) on parameters are given between parenthesis in units of the last digit. Parameters in brackets are fixed to the ground state value.

	$\nu_{51} = 1$	$\nu_{50} = 1$	$\nu_{51} = 2$	$\nu_{50} = 2$
A_v	1941.73727 (53)	1939.60653 (22)	1941.1817 (43)	1937.1523 (11)
B_v	1132.951050 (68)	1134.394385 (36)	1132.3400 (16)	1135.16069 (49)
C_v	716.402565 (43)	716.571336 (25)	716.785770 (55)	717.121942 (55)
$\Delta_J \times 10^6$	17.9061 (20)	18.0313 (10)	17.9912 (16)	18.0842 (16)
$\Delta_{JK} \times 10^3$	0.0185871 (92)	0.0134017 (43)	0.016961 (48)	0.014049 (34)
$\Delta_K \times 10^3$	0.04257 (14)	0.045458 (62)	0.04502 (35)	0.03692 (23)
$\delta_J \times 10^6$	6.41897 (11)	6.47433 (58)	[6.43578]	[6.43578]
$\delta_K \times 10^3$	0.0360674 (88)	0.0338925 (51)	[0.0351740]	[0.0351740]
# lines	2 567	2 547	1 093	1 035
RMS / kHz	34	34	72	44

^a Hybrid rotational constants and MP2 centrifugal distortion terms, see text

$$^b \delta = (B_{\text{Exp.}} - B_{\text{Calc.}}) / B_{\text{Calc.}} \times 100$$

Table S8. Calculated charges on atoms in naphthalene, benzaldehyde and the two isomers of naphthaldehyde at the MP2/aug-cc-pVQZ level using NBO6 software. Values are given in atomic units. See Figure 5 for atomic numbering.

atom	#	1-naphthaldehyde		2-naphthaldehyde		naphthalene	benzaldehyde		
		<i>cis</i>	<i>trans</i>	<i>cis</i>	<i>trans</i>		atom	#	
C	1	-0.0738	-0.0937	-0.1125	-0.0997	-0.1726	C	1	-0.0954
C	2	-0.2295	-0.2246	-0.1247	-0.1105	-0.2177	C	2	-0.2109
C	3	-0.1628	-0.1388	-0.2209	-0.2056	-0.2177	C	3	-0.2029
C	4	-0.1641	-0.2116	-0.1730	-0.1916	-0.1726	C	4	-0.1497
C	5	-0.1352	-0.1279	-0.2285	-0.1341	-0.1726	C	5	-0.2112
C	6	-0.2326	-0.2358	-0.1421	-0.2395	-0.2177	C	6	-0.2130
C	7	-0.1812	-0.2067	-0.2324	-0.2096	-0.2177	H	7	0.2354
C	8	-0.2247	-0.2101	-0.1789	-0.1277	-0.1726	H	8	0.2142
C	9	0.0053	0.0015	-0.0601	-0.1527	-0.0192	H	9	0.2068
C	10	-0.0863	-0.0360	-0.0154	0.0086	-0.0192	H	10	0.2141
H	11	0.2483	0.2108	0.2132	0.2020	0.1928	H	11	0.2134
H	12	0.2132	0.2165	0.2168	0.2167	0.2072	H	12	0.1093
H	13	0.2158	0.2151	0.2031	0.2152	0.2072	O	13	-0.4800
H	14	0.2002	0.1969	0.2132	0.1996	0.1928	C	14	0.3698
H	15	0.2087	0.2088	0.2128	0.2105	0.1928			
H	16	0.2074	0.2050	0.2160	0.2335	0.2072			
H	17	0.2145	0.2366	0.2166	0.1975	0.2072			
H	18	0.1087	0.1136	0.1095	0.1082	0.1928			
O	19	-0.4903	-0.4805	-0.4806	-0.4817				
C	20	0.3583	0.3607	0.3677	0.3607				

Table S9. Calculated charges on atoms in naphthalene, hydroxybenzene, and the two isomers of hydroxynaphthalene at the MP2/aug-cc-pVQZ level using NBO6 software. Values are given in atomic units. See Figure 5 for atomic numbering.

		1-hydroxynaphthalene		2-hydroxynaphthalene		naphthalene	hydroxybenzene		
atom	#	<i>cis</i>	<i>trans</i>	<i>cis</i>	<i>trans</i>		atom	#	
	1	0.2765	0.2716	-0.3345	-0.2098	-0.1726	C	1	0.3414
	2	-0.2756	-0.2554	0.3487	0.2520	-0.2177	C	2	-0.2838
	3	-0.2136	-0.2243	-0.2971	-0.2815	-0.2177	C	3	-0.1891
	4	-0.1675	-0.1637	-0.1172	-0.1845	-0.1726	C	4	-0.2452
	5	-0.1778	-0.1583	-0.2127	-0.1457	-0.1726	C	5	-0.1900
	6	-0.2466	-0.2540	-0.2294	-0.2481	-0.2177	C	6	-0.3103
	7	-0.1938	-0.1356	-0.2295	-0.2186	-0.2177	H	7	0.2241
	8	-0.1811	-0.2261	-0.1486	-0.1936	-0.1726	H	8	0.2142
	9	-0.0945	-0.0539	0.0058	-0.0029	-0.0192	H	9	0.2142
	10	-0.0007	-0.0876	-0.0411	-0.0441	-0.0192	H	10	0.2140
	11	0.1795	0.2282	0.1936	0.2048	0.1928	H	11	0.2077
	12	0.2105	0.2033	0.2099	0.2134	0.2072	H	12	0.4729
	13	0.2161	0.2118	0.2144	0.2119	0.2072	O	13	-0.6700
	14	0.2070	0.2075	0.2065	0.1990	0.1928			
	15	0.1963	0.2026	0.1960	0.2069	0.1928			
	16	0.2254	0.2026	0.2267	0.2104	0.2072			
	17	0.2146	0.2101	0.2046	0.2099	0.2072			
	18	0.4751	0.4785	0.4742	0.4749	0.1928			
	19	-0.6498	-0.6573	-0.6702	-0.6542				