



**HAL**  
open science

## Old plans versus Geophysical Surveys: the case study of Gurob (Fayum, Egypt)

Lionel Darras, Tomasz Herbich, Marine Yoyotte

► **To cite this version:**

Lionel Darras, Tomasz Herbich, Marine Yoyotte. Old plans versus Geophysical Surveys: the case study of Gurob (Fayum, Egypt). 13th International Conference on Archaeological Prospection, Aug 2019, Sligo, Ireland. hal-02570438

**HAL Id: hal-02570438**

**<https://hal.science/hal-02570438>**

Submitted on 12 May 2020

**HAL** is a multi-disciplinary open access archive for the deposit and dissemination of scientific research documents, whether they are published or not. The documents may come from teaching and research institutions in France or abroad, or from public or private research centers.

L'archive ouverte pluridisciplinaire **HAL**, est destinée au dépôt et à la diffusion de documents scientifiques de niveau recherche, publiés ou non, émanant des établissements d'enseignement et de recherche français ou étrangers, des laboratoires publics ou privés.

# OLD PLANS VERSUS GEOPHYSICAL SURVEYS: THE CASE STUDY OF GUROB (EGYPT, FAYUM)

Lionel Darras <sup>(1)</sup>, Tomasz Herbich <sup>(2)</sup> and Marine Yoyotte <sup>(3)</sup>

<sup>(1)</sup> Université de Lyon, CNRS, Archeorient, UMR 5133, Maison de l'Orient et de la Méditerranée, France

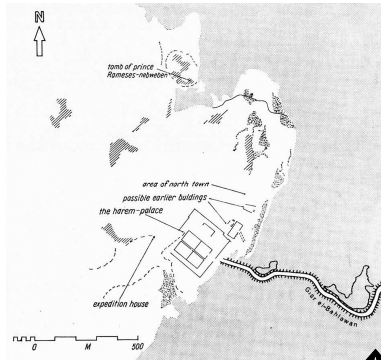
<sup>(2)</sup> Institute of Archaeology and Ethnology, Polish Academy of Sciences, Warsaw, Poland

<sup>(3)</sup> Institut français d'archéologie orientale, Cairo, Egypt

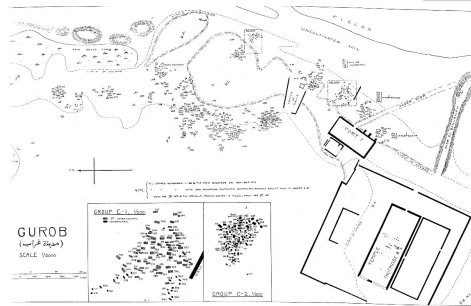
The site of Gurob extends on the remains of the ancient town of Mi-wer, on the southern side of the Fayum oases entrance. The town was built by Thutmose III (1479-1425 BC) in order to shelter a palatial complex.

In 1920, Guy Brunton and Reginald Engelbach drew the first general map of the town and its nine cemeteries.

## OLD SITUATION PLANS



Barry and Kemp's plan (1978)

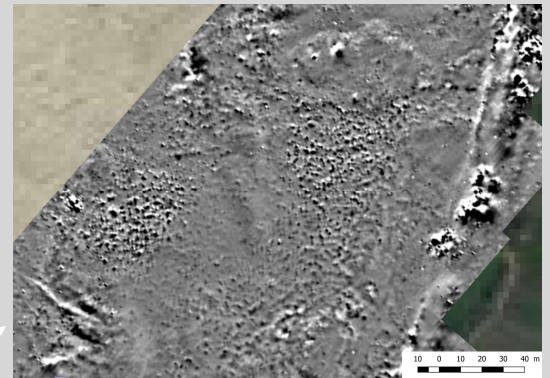


Brunton and Engelbach's plan (1927)

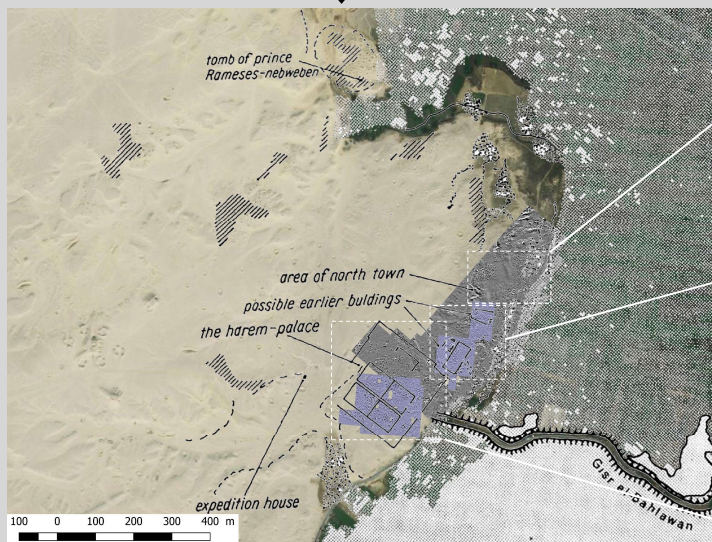
## GEOPHYSICAL SURVEYS

In 2006-2007, the main objective of magnetic survey (Geoscan FM36 fluxgate gradiometer) was to trace the internal structure of the harem palace.

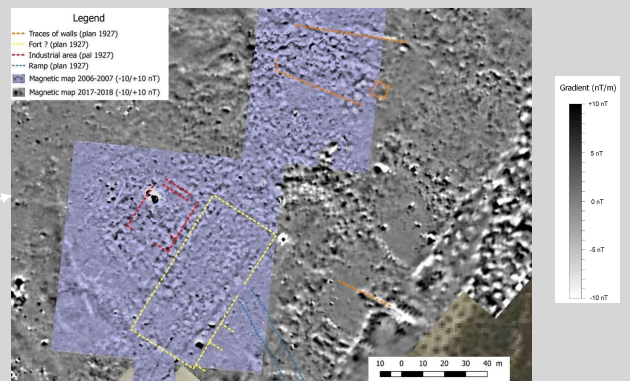
In 2017/2018, the objective of magnetic survey (Geometrics G858 caesium gradiometer) was to acquire more details about the occupation of north town shown and to understand the link between the harem palace and the fort.



Area of north town

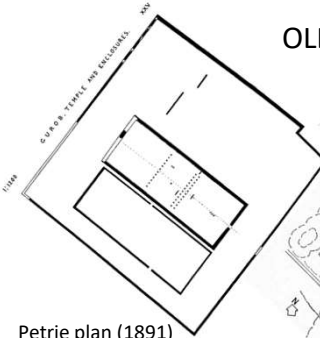


Magnetic survey with Barry and Kemp's plan georeferenced



Possible earlier buildings

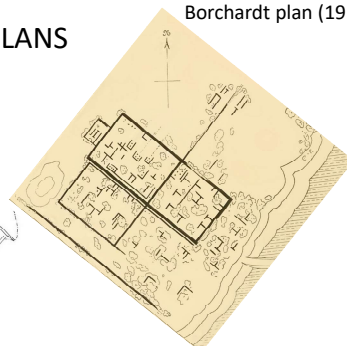
## OLD HAREM PALACE PLANS



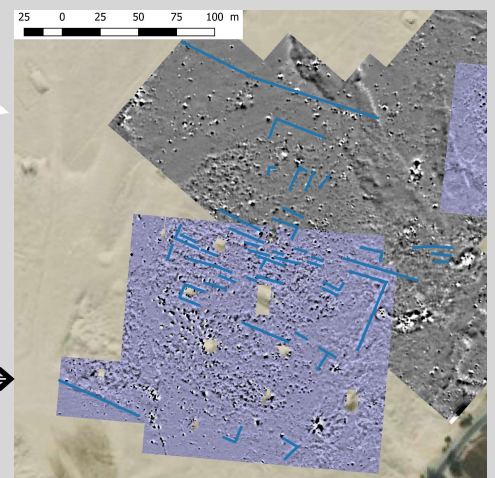
Petrie plan (1891)



Barry and Kemp's plan (1978)



Borchardt plan (1911)



The harem-palace

The four geophysical campaigns carried out between 2006 and 2018 made it possible to verify and complete old archaeological plans. Future excavation will help to better understand the connection between the geophysical image and archaeological structures still hidden below the surface.