



HAL
open science

Primary production and depth drive different trophic structure and functioning of fish assemblages in French marine ecosystems

Pierre Cresson, Tiphaine Chauvelon, Paco Bustamante, Daniela Bănaru, Jérôme Baudrier, François Le Loc'h, Aourel Mauffret, Benoit Mialet, Jérôme Spitz, Nathalie Wessel, et al.

► To cite this version:

Pierre Cresson, Tiphaine Chauvelon, Paco Bustamante, Daniela Bănaru, Jérôme Baudrier, et al.. Primary production and depth drive different trophic structure and functioning of fish assemblages in French marine ecosystems. *Progress in Oceanography*, 2020, 186C, pp.102343. 10.1016/j.pocean.2020.102343 . hal-02569564

HAL Id: hal-02569564

<https://hal.science/hal-02569564v1>

Submitted on 19 May 2020

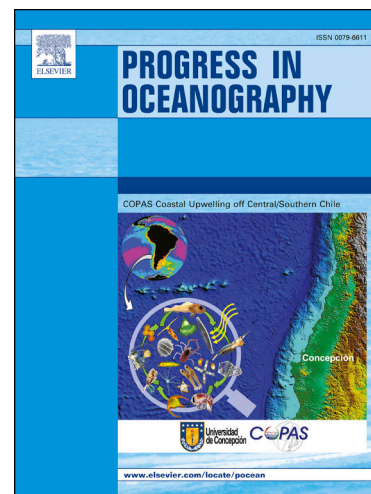
HAL is a multi-disciplinary open access archive for the deposit and dissemination of scientific research documents, whether they are published or not. The documents may come from teaching and research institutions in France or abroad, or from public or private research centers.

L'archive ouverte pluridisciplinaire **HAL**, est destinée au dépôt et à la diffusion de documents scientifiques de niveau recherche, publiés ou non, émanant des établissements d'enseignement et de recherche français ou étrangers, des laboratoires publics ou privés.

Journal Pre-proofs

Primary production and depth drive different trophic structure and functioning of fish assemblages in French marine ecosystems

Pierre Cresson, Tiphaine Chauvelon, Paco Bustamante, Daniela Bănar, Jérôme Baudrier, François Le Loc'h, Aourel Mauffret, Benoit Mialet, Jérôme Spitz, Nathalie Wessel, Marine J. Briand, Margaux Denamiel, Matthieu Doray, Gaël Guillou, Angélique Jadaud, Coline Lazard, Camille Noûs, Solène Prieur, Manuel Rouquette, Claire Saraux, Sandrine Serre, Charles-André Timmerman, Yves Verin, Mireille Harmelin-Vivien



PII: S0079-6611(20)30082-3
DOI: <https://doi.org/10.1016/j.pocean.2020.102343>
Reference: PROOCE 102343

To appear in: *Progress in Oceanography*

Received Date: 6 November 2019
Revised Date: 29 April 2020
Accepted Date: 4 May 2020

Please cite this article as: Cresson, P., Chauvelon, T., Bustamante, P., Bănar, D., Baudrier, J., Le Loc'h, F., Mauffret, A., Mialet, B., Spitz, J., Wessel, N., Briand, M.J., Denamiel, M., Doray, M., Guillou, G., Jadaud, A., Lazard, C., Noûs, C., Prieur, S., Rouquette, M., Saraux, C., Serre, S., Timmerman, C-A., Verin, Y., Harmelin-Vivien, M., Primary production and depth drive different trophic structure and functioning of fish assemblages in French marine ecosystems, *Progress in Oceanography* (2020), doi: <https://doi.org/10.1016/j.pocean.2020.102343>

This is a PDF file of an article that has undergone enhancements after acceptance, such as the addition of a cover page and metadata, and formatting for readability, but it is not yet the definitive version of record. This version will undergo additional copyediting, typesetting and review before it is published in its final form, but we are providing this version to give early visibility of the article. Please note that, during the production process, errors may be discovered which could affect the content, and all legal disclaimers that apply to the journal pertain.

Primary production and depth drive different trophic structure and functioning of fish assemblages in French marine ecosystems.

Pierre Cresson ^{a*}, Tiphaine Chouvelon ^{b,c}, Paco Bustamante ^{d,e}, Daniela Bănaru ^f, Jérôme Baudrier ^g, François Le Loc'h ^h, Aourel Mauffret ^b, Benoit Mialet ^d, Jérôme Spitz ^{c,i}, Nathalie Wessel ^g, Marine J. Briand ^{f,j}, Margaux Denamiel^a, Matthieu Doray ^k, Gaël Guillou ^d, Angélique Jadaud ^l, Coline Lazard ^a, Camille Noûs^m, Solène Prieur ^d, Manuel Rouquette ^{a,p}, Claire Saraux ^{l,n}, Sandrine Serre ^o, Charles-André Timmerman ^a, Yves Verin ^a, Mireille Harmelin-Vivien ^f

a: Ifremer, HMMN, Centre Manche Mer du Nord, 150 Quai Gambetta BP 699 62321 Boulogne sur Mer

b: Ifremer, BE/LBCM, Centre Atlantique, Rue de l'île d'Yeu, BP 21105, 44311 Nantes Cedex 03

c: Observatoire Pelagis, UMS 3462 La Rochelle Université/CNRS, 5 allée de l'Océan, 17000 La Rochelle, France

d: Littoral Environnement et Sociétés (LIENSs), UMR 7266 CNRS-La Rochelle Université, 2 rue Olympe de Gouges 17000 La Rochelle

e: Institut Universitaire de France (IUF), 1 rue Descartes 75005 Paris, France

f: MIO, UM 110, Aix-Marseille Université, CNRS/INSU, Université de Toulon, IRD, Campus de Luminy, 13288 Marseille

g: Ifremer, ODE/VIGIES, Rue de l'île d'Yeu, BP 21105, 44311 Nantes Cedex 03, France

h: IRD, Univ. Brest, CNRS, Ifremer, LEMAR, IUEM, F-29280 Plouzané- France

i: Centre d'Etudes Biologiques de Chizé (CEBC), UMR 7372 La Rochelle Université-CNRS, 79360 Villiers-en-Bois, France

j: Ifremer, ODE/LER-PAC, Centre Méditerranée, Zone portuaire de Brégaillon, CS 20 330, 83507 La Seyne-sur-Mer Cedex.

k: Ifremer, EMH, Centre Atlantique, Rue de l'île d'Yeu, BP 21105, 44311 Nantes Cedex 03

l: MARBEC, Université de Montpellier, Ifremer, CNRS, IRD, Sète, France.

m: Laboratoire Cogitamus

n :IPHC UMR 7178, CNRS-Université de Strasbourg, 23 rue Becquerel, 67037 Strasbourg, France

o: Institut Méditerranéen de Biologie et d'Ecologie Marine, Aix-Marseille Université, CNRS, IRD, Université d'Avignon, Station marine d'Endoume, chemin de la Batterie des Lions, 13001 Marseille

p, present address: Ifremer, LERBN Centre Bretagne, 38 rue du Port Blanc - 35800 Dinard

*corresponding author; pierre.cresson@ifremer.fr

Abstract

Investigating the drivers of fish assemblage trophic structure is a critical question, in order to better understand ecosystem functioning, predict the effects of perturbations and implement integrated management of exploited marine ecosystems. Ecosystemic surveys enabled the determination of the trophic structure of the fish assemblages in three French marine ecosystems, namely the Eastern English

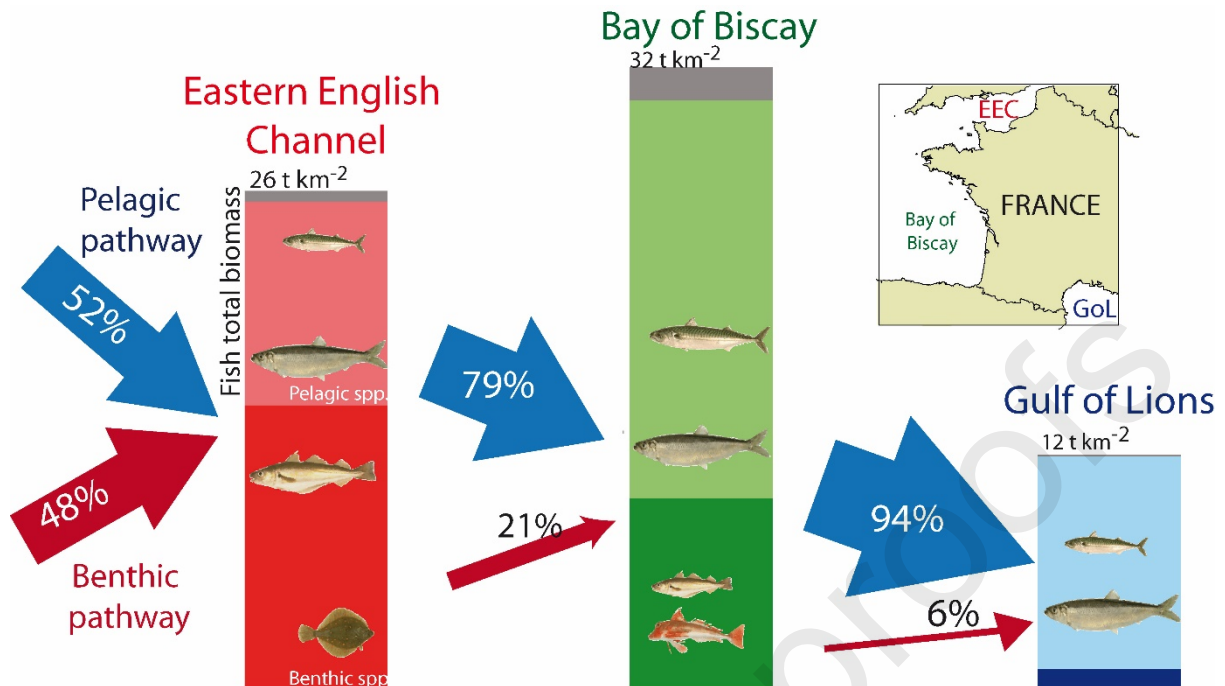
Channel, the Bay of Biscay and the Gulf of Lions, through the simultaneous collection of qualitative (stable isotopes and energy content) and quantitative (biomass) data. In the Bay of Biscay and in the Gulf of Lions, pelagic primary production supported at least 80% of the fish biomass production, and explained the dominance of pelagic species, but with differences resulting from the different productivity. The lower productivity in the oligotrophic Gulf of Lions led to a lower total biomass, energy density as well as the predominance of zooplankton feeders. In contrast, fluxes in the Bay of Biscay were sufficient to support a higher biomass of pelagic piscivores, and of species with higher energy content. In the shallow Eastern English Channel, the respective contributions of pelagic and benthic sources were similar. Benthic-demersal species of higher trophic level dominated this assemblage, because of their ability to exploit both pathways. Results of the present study confirmed that fisheries-focused surveys can be used as efficient platforms to address questions about ecosystem functioning. Here it confirmed the expected differences between ecosystems and the importance of primary production and environment as drivers of fish assemblage structure and functioning. Future studies should nevertheless develop new methods to better assess the paramount role of low trophic level consumers.

Keywords: fish community; trophodynamics; food webs; benthic-pelagic coupling;

Highlights

- Fish assemblage trophic structure was compared between French marine ecosystems
- 2 pelagic dominated ecosystems 1 with similar benthic/pelagic contributions
- Benthic-demersal species' biomass was higher when both sources contribute
- Differences in the nature and intensity of fluxes drive changes in assemblage composition

Graphical abstract



1. Introduction

Trophic interactions were identified early as major drivers of community structure and functioning, and thus have been the focus of numerous works in ecology going back decades (Layman et al., 2015). Understanding food web topology, *i.e.* the number of species and their interactions, is crucial to describe community functioning and to understand energy and matter transfers. The food web is also a pertinent framework to address questions at all levels of ecological organization, and thus to estimate the potential effects of human and natural perturbations, and predict future changes, from individuals to ecosystems (Libralato et al., 2014; Seibold et al., 2018; Thompson et al., 2012; Trebilco et al., 2013). Understanding the role of trophic interactions in ecosystem functioning is essential to predict the functional effects of biodiversity loss, since anthropic pressures can affect food webs, via bottom-up climatic effects on primary production (Griffiths et al., 2017; Hayden et al., 2019; Lynam et al., 2017) or top-down cascades, after removal of high trophic level species (Estes et al., 2011; Pauly et al., 1998). Several trophic-based indicators have thus been developed to monitor functional alterations of marine systems (Coll et al., 2016; Shannon et al., 2014). Consequently, the current agenda of most management agencies fosters the implementation of ecosystemic management policies, such as the Ecosystemic Approach to Fisheries globally or the Marine Strategy Framework Directive (MSFD) in Europe (de Boois, 2019). In a global context of complex and cumulative human pressures on marine ecosystems (Halpern et al., 2019), an integrated assessment of trophic interactions over several trophic levels is still a central point of fundamental research on current functioning and also an urgent need as a basis for forecasting future alterations and implementing sustainable management practices.

Inflow of energy at the base of food webs drives marine system functioning (Chassot et al. 2010), but the connection between basal energy and fish biomass or fisheries yield is not straightforward (Petrik et al., 2019; Ware and Thomson, 2005). Trophodynamics, *i.e.* how energy and nutrients flow between different levels of the food web, largely shapes the organization of marine communities and associated ecosystem services (Petrik et al., 2019; Trebilco et al., 2013; Udy et al., 2019; van Denderen et al., 2018). Distribution of biomass along trophic levels is a classical representation of biological communities. The shape of this representation carries much information about the trophic functioning of a system, the underlying energy fluxes (Trebilco et al., 2013) and anthropogenic pressures (Gascuel et al., 2005). Whether considering trophic descriptors as discrete (trophic pyramid) or continuous variables (trophic spectrum), communities are usually depicted with a bottom-heavy base, reflecting the dissipation of energy along trophic levels from one major basal source, mostly pelagic primary production in marine systems (Uitz et al., 2010), resulting in low biomass levels at higher trophic levels (Trebilco et al., 2013; van Denderen et al., 2018). Nevertheless, human or natural factors can alter organization and fluxes, leading to odd-shaped representations. By targeting predator species, fisheries remove biomass at the top of the community, sharpening the upper part of the spectrum, but also decrease the top-down predation effect on mid- and low trophic level species, leading to higher biomass at low trophic levels and more bottom heavy spectra (Gascuel et al. 2005).

Couplings (*i.e.* the exchange of matter or energy between remote systems) are key features of marine systems and major drivers of their trophic functioning. Such mechanisms connect systems and profoundly alter their functioning, as fluxes of nutrients and organic matter or animal migrations influence ecosystem structure and productivity, with a potential impact on ecosystem services, such as carbon storage or fisheries (Croll et al., 2005; Darnaude et al., 2004; Furey et al., 2018; Graham et al., 2018). As organic matter subsidies or the arrival of migrant species increase the amount of matter and energy available in the system, the biomass of high trophic level species are higher in coupled systems; the resulting representation being consequently more top-heavy (Mourier et al., 2016; Trebilco et al., 2016; Udy et al., 2019). This assumption reinforces the importance of considering coupling between ecosystems. The major importance of the coupling between pelagic and benthic systems has been extensively documented in marine systems. Downward coupling (*i.e.* benthic habitats being fueled by pelagic primary production) is prevalent in most marine ecosystems worldwide and has consequently received much attention (Baustian et al., 2014; Duffil Telsning et al. 2019; Griffiths et al., 2017; Lassalle et al., 2011; McMeans et al., 2015). Nevertheless, upwards fluxes (*i.e.* integration of benthic primary or secondary productions in pelagic systems) can play some role and merits investigation as well. In addition, comparison between systems with different environmental features is recognized as a convenient framework to identify key environmental and anthropic drivers of trophic functioning (*e.g.*

Graham et al., 2017; Silberberger et al., 2018; Udy et al., 2019; Vander Zanden et al., 2005; Ware and Thomson, 2005). The three French marine ecosystems (Eastern English Channel, Bay of Biscay and Gulf of Lions) are thus well-suited for undertaking such a comparison, since they differ in the environmental parameters, notably the intensity of primary production and average depth (Table 1). This study was thus aimed at using this comparison framework for the three main marine ecosystems in French waters.

Table 1: Comparison of annual average environmental conditions in the three studied systems. Data were retrieved from the EU Copernicus Marine Service Information for a temporal period encompassing surveys (Oct. 16 2014 – Dec. 16, 2015 in the Eastern English Channel and the Bay of Biscay, Oct. 1, 2014 – Dec. 1, 2015 in the Gulf of Lions), and for areas the limits of which are detailed in the final line. Superscript letters refer to the models used. Data were integrated over the 0-20 m depth layer in the Eastern English Channel and the Bay of Biscay, and over the 1.5-19.6 m depth layer in the Gulf of Lions. The amount of pelagic production reaching the seafloor was calculated, considering that 16% of the pelagic production reaches the seafloor in the Eastern English Channel and the Bay of Biscay, and 9 % in the Mediterranean Sea (van Denderen et al., 2018). Depth refers to the depth of the sampling stations (Fig. 1).

	Eastern English Channel	Bay of Biscay	Gulf of Lions
Net Primary Production (mg C m ⁻³ d ⁻¹) mean ± sd [1 st – 3 rd quartiles]	16.40 ± 23.19 [3.93 – 19.88] ^a	10.03 ± 12.23 [3.50-11.66] ^a	6.53 ± 11.69 [1.21-7.63] ^d
Pelagic production reaching sea floor (mg C m ⁻³ d ⁻¹) mean ± sd [1 st – 3 rd quartiles]	2.62 ± 3.71 [0.63-3.18]	1.60 ± 1.95 [0.56-1.8]	0.59 ± 1.05 [0.11-0.68]
Phytoplankton concentration (mmol m ⁻³)	4.34 ± 2.11 [2.8 – 5.2] ^d	2.02 ± 1.55 [1.19-2.04] ^d	1.78 ± 1.27 [1.17 – 1.78] ^d
Chlorophyll <i>a</i> concentration (mg m ⁻³)	1.13 ± 0.96 [0.60-1.28] ^b	0.62 ± 0.71 [0.28-0.68] ^b	0.21 ± 0.13 [0.11-0.27] ^e
Temperature (°C) mean ± sd [1 st – 3 rd quartiles]	13.19 ± 2.96 [10.63 ± 15.83] ^c	14.43 ± 2.38 [12.46 ± 16.32] ^c	17.26 ± 3.27 ^f [14.37-20.11]
Depth	42 m (29-59)	141 m (19-222)	108 m (77-284)
Geographical scope	49°N-51°N ; 1°W- 2°E	46°N-49°N; 8°E-1°W	42°N-44°N ; 3°E-6°W

a: NORTHWESTSHELF_ANALYSIS_FORECAST_PHYS_004_011; b: NORTHWESTSHELF_REANALYSIS_BIO_004_011; c: NORTHWESTSHELF_REANALYSIS_PHY_004_009; d: GLOBAL_REANALYSIS_BIO_001_029; e: MEDSEA_ANALYSIS_FORECAST_BIO_006_008; f: MEDSEA_REANALYSIS_PHYS_006_004

Average primary production is notably higher in the Eastern English Channel than in the Bay of Biscay and in the oligotrophic Gulf of Lions (Tab. 1), leading to higher vertical exports: 16 % of the pelagic production reaches the seabed in the Atlantic, compared to only 9% in the Mediterranean (van Denderen et al., 2018). The three environments also differ in their fish assemblage composition: benthic and benthic-demersal species dominate in the Eastern English Channel, pelagic piscivores play a major role in the Bay of Biscay, and zooplankton feeders are predominant in the Gulf of Lions (Bănar et al., 2013; Girardin et al., 2018; Lassalle et al., 2011; Saraux et al., 2019). However, no study has so far

empirically compared these environments in order to understand trophic structures and pathways in their fish assemblages.

Stable isotopes are nowadays classical but powerful tracers of trophic functioning, notably in marine ecosystems (Boecklen et al., 2011). This technique is based on the different behavior of carbon and nitrogen isotopes in food webs. As the carbon isotopic ratio varies little along trophic levels, it is a good proxy of the major organic matter sources at the base of the food web. In contrast, nitrogen is enriched at each trophic level, allowing the use of this element as a trophic level proxy. Several studies have demonstrated the efficiency of stable isotopes for identifying trophic couplings, as terrestrial, benthic and pelagic primary productions differ in their isotopic ratios. While increasing nitrogen isotopic ratios in consumer tissues will place them along several trophic levels, variability in carbon will allow identification of the coexistence of several pathways and the relative importance of different organic matters as the base of an ecosystem food web (*e. g.* Croll et al., 2005; Darnaude et al., 2004; Duffill Telsnig et al., 2019; Graham et al., 2018; Kopp et al., 2015; Liénart et al., 2017). Nevertheless, stable isotopes provide only qualitative information, *i.e.* the existence of a relationship between species, and may partly attest to the intensity of the flux, by calculating the relative importance of each source, but cannot directly estimate energy flows in the absence of information about the actual importance of each species in the ecosystem. As simultaneous collection of trophic and biomass or abundance data involves a good deal of work, most studies investigating the trophic structure of a fish community with stable isotopes classically do not include biomass data (but see Cresson et al., 2019; Duffill Telsnig et al., 2019; Trueman et al., 2014; Udy et al., 2019). As a result, patterns driven by species of low or high importance may be missed. Similarly, studies including biomass data usually infer trophic structure from stomach content data or trophic attributes retrieved from previous studies or global data aggregators such as FishBase or DAPSTOM (Froese and Pauly, 2017; Pinnegar, 2014). However, gut content analyses are brief snapshots in time, whereas stable isotopes, by integrating a longer time period, should give complementary and more reliable information on the trophic structure.

The aim of the present study was thus to compare the trophic structure (*i.e.* biomass distribution within trophic functional groups) and functioning (*i.e.* relative importance of different kinds of primary production as sources of organic matter) of fish communities over the three French marine ecosystems (the Eastern English Channel, the Bay of Biscay and the Gulf of Lions), and to identify major underlying drivers, by using the ecosystemic approach implemented through the MSFD monitoring program in 2014 and 2015. Basically, three main questions were investigated in this study : (1) How do fish biomass and functional group composition vary between the regions, (2) How do fish assemblages differ in their pelagic/benthic contribution and trophic structure, and (3) How does the energetic density of dominant pelagic fish species vary among regions?

Previous studies demonstrated that these systems differed regarding the main component of organic matter pools at the base of their food webs (Liénart et al., 2017), and the portion of these pools actually used by filter feeders (Briant et al., 2018). Oligotrophy of the Mediterranean was previously identified as a major factor driving trophic features of some Mediterranean species (Chouvelon et al., 2018; Cossa et al., 2012). But none empirically compare the trophic structure of the fish communities. In addition, the vast majority of studies investigating the links between primary production and fish production and/or fisheries yields overlooked fish assemblage structure (*e.g.* Udy et al. 2019; Ware and Thomson, 2005), despite the recent demonstration that including functional attributes (*e.g.* separating benthic or pelagic piscivores) can be a powerful method to understand the links between primary production and fish biomass (Cresson et al., 2019; Petrik et al., 2019; Stock et al., 2017; van Denderen et al., 2018). The simultaneous collection of quantitative (*i.e.* biomass) and qualitative functional data (isotopic-derived trophic descriptors and energy content) allowed assessment of major fluxes of organic matter, and how these fluxes drive different fish community structures.

2. Material and methods

This study benefited from French ecosystemic surveys in the Eastern English Channel, the Bay of Biscay and the Gulf of Lions to collect biomass, stable isotope and energy content data for some selected fish species, within the framework of the implementation of the MSFD. The strategy adopted to inform trophic descriptors of the MSFD was to use as far as possible the currently available monitoring programs. These surveys have for decades been applying standardized protocols to produce fisheries indicators in the three French ecosystems of interest in this work (Fig. 1).

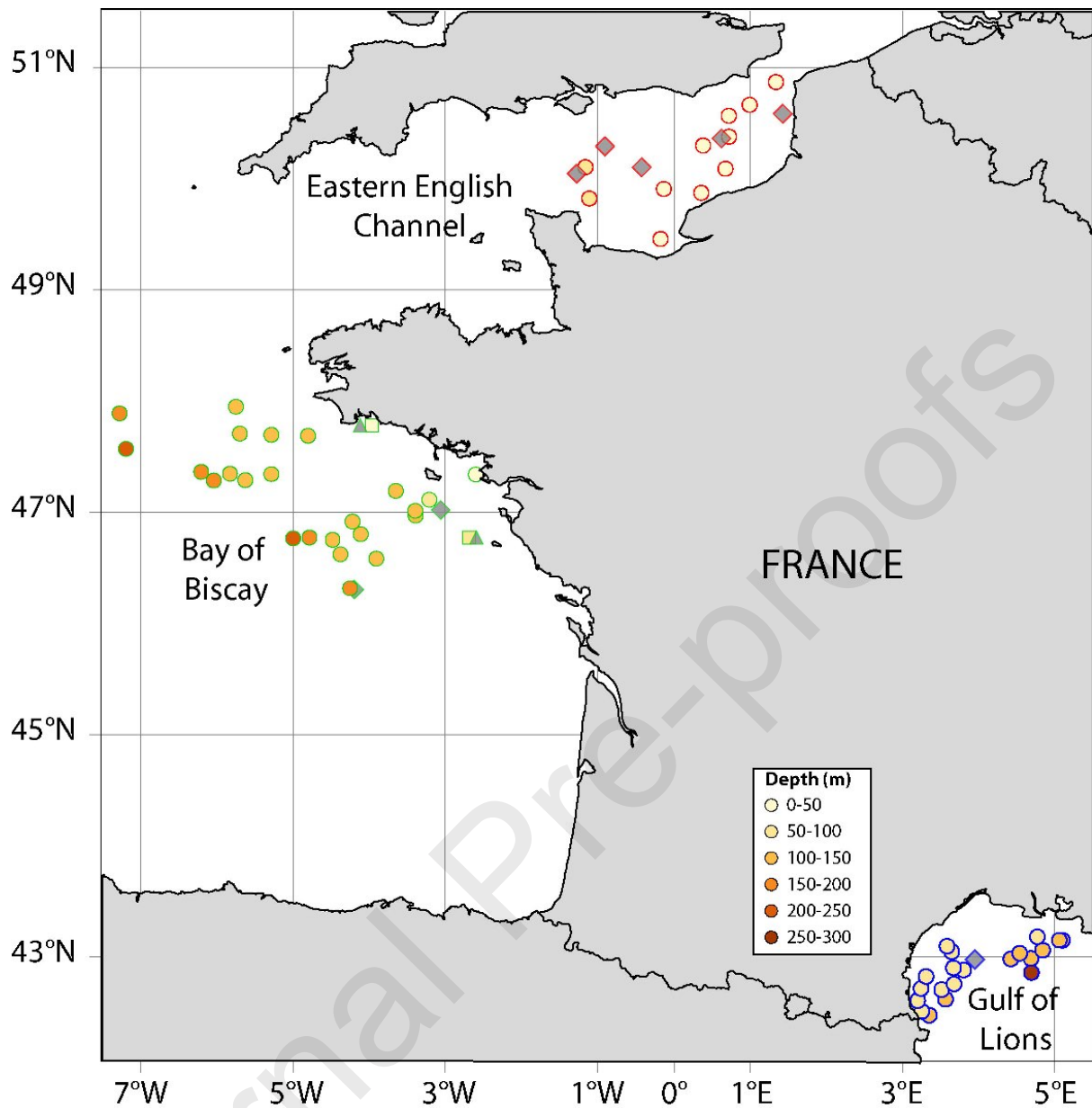


Fig. 1: Map of the sampled ecosystems. Colored circles stand for the stations where fish were sampled for stable isotope analyses, with color representing the sampling depth. Grey symbols represent sampling location of baseline data gathered from external sources; triangles: *Pecten maximus* from Chouvelon et al. (2012a); diamonds: zooplankton from Chouvelon et al. (2015) in the Bay of Biscay, from P. Cresson (unpubl. data) in the Eastern English Channel and from D. Bănaru (unpubl. data) in the Gulf of Lions.

The application of MSFD specific objectives during surveys not designed to implement it resulted in the need for adaptation, through the collection of additional data (Baudrier et al., 2018). This approach is consistent with the ecosystem monitoring implementation framework proposed by ICES (“Approach C: Add data collection to existing monitoring”; de Boois, 2019) but resulted in sampling differences between ecosystems (Table 2). Briefly, benthic-demersal surveys (IBTS in the Eastern English Channel, EVHOE in the Bay of Biscay, and MEDITS in the Gulf of Lions) use bottom trawling to estimate abundance

and biomass of benthic-demersal communities, and were used to collect samples dedicated to stable isotope analyses in the present study. Trawls vary slightly between surveys (IBTS and EVHOE: 36/47 Grande Ouverture Verticale (GOV) trawl with 20 mm stretched mesh size at the cod end; MEDITS: GOC-73 trawl with 20 mm mesh size at the cod end). Pelagic surveys (PELGAS in the Bay of Biscay, PELMED in the Gulf of Lions) perform fisheries acoustics surveys to estimate the biomass and distribution of pelagic species. Species identification is confirmed by midwater trawling. These surveys provided biomass data for pelagic species and samples dedicated to determination of energy content in the present study. As forage fish species are pivotal between primary production and high trophic level predators, changes in their energy density can be viewed as a good proxy of the energy available in an ecosystem. Changes in energy density of forage species can dramatically impact the population dynamics of marine top predators, and can be explained by a change in energy density of their preys (Österblom et al. 2008; Spitz et al., 2012; Trites & Donnelly, 2003). In addition with stable isotopes and species biomass, energy density is a pertinent indicator of fish condition, and of the quality of matter fluxes, particularly for lipid transfer from zooplankton to fish (Saraux et al., 2019; Spitz et al., 2010 and references therein; Van Beveren et al., 2014; Wuenschel et al. 2019).

As no pelagic survey is carried out in the English Channel, all analyses are based on biomass data and samples collected during IBTS (Verin, 2015). Estimation of pelagic species biomass by bottom trawling may appear biased but it may be assumed that the problem is limited by the shallowness of the Eastern English Channel, by the wide opening of the GOV trawl, and by correction factors based on species-specific catchability (Walker et al., 2017).

Table 2: Data sources and sampling design. Bivalves and zooplankton were used as proxies of benthic and pelagic organic matter sources, respectively. Fish biomass data was corrected for catchability in the IBTS (benthic, pelagic) and EVHOE (benthic) data. Such corrections were not available for MEDITS (benthic) and not needed for PELGAS and PELMED (both pelagic) data. IBTS: International Bottom Trawl Survey; EVHOE: Evaluation Halieutique Ouest de l'Europe; PELGAS: PELagiques Golfe de GAScogne; MEDITS: International bottom trawl survey in the Mediterranean; PELMED: PELagiques MEDiterannée.

Analysis	Ecological compartment	Eastern English Channel	Bay of Biscay	Gulf of Lions
Biomass	Fish	IBTS (January 2015)	EVHOE (November 2014) for benthic species	MEDITS (May-June 2015) for benthic fish species
			PELGAS (May 2015) for pelagic species	PELMED (June-August 2015) for pelagic species
C and N stable isotope ratios	Fish	IBTS	EVHOE	MEDITS
	Bivalves	IBTS	Literature data	MEDITS
	Zooplankton	Literature data	Literature data	Literature data
Energy content	Pelagic fish species	IBTS	PELGAS	PELMED

In the Bay of Biscay, EVHOE and PELGAS surveys were carried out in November 2014 and May 2015 respectively (Doray et al., 2015; Duhamel et al., 2014), potentially resulting in a temporal mismatch between isotopic and biomass data for pelagic species. Seasonal variation of biomass may occur between spring and late autumn but the anchovy spends most of its annual life cycle within the Bay of Biscay. The pattern may be slightly different for the sardine but only for larger individuals migrating away from the Bay of Biscay. As smaller individuals stay inshore and represent the vast majority of sardine biomass, spring biomass is a pretty good estimator of year-round sardine biomass in the Bay of Biscay (Alheit et al., 2010). Finally, seasonal variation of isotopic ratios is low for sardine and lower than interindividual variation for anchovy (Chouvelon et al., 2015). In the Gulf of Lions, all data were collected from samplings performed consecutively from May to August 2015 during the MEDITS and PELMED surveys so that seasonal variation should be minimal (Bourdeix, 2015; Jadaud and Métral, 2015).

Sampled stations (Fig. 1) were on average shallower in the Eastern English Channel (average depth of trawled stations: 42 m, [shallowest: 29 m depth, deepest: 59 m depth]) than in the Gulf of Lions (108 m depth [77-284 m]) and in the Bay of Biscay (141 m depth [19-222 m]). In all surveys, all fish were sorted, identified at the lowest possible taxonomic level, and weighed to determine actual estimated biomass of each species. Pelagic fish acoustic densities are associated with an identification of trawl catches, to estimate small pelagic fish biomass at the Bay of Biscay (PELGAS) and Gulf of Lions (PELMED) scale, according to the methodology described in Doray et al. (2010, 2018b) for PELGAS or Saraux et al (2014) for PELMED, and using the dedicated R package EchoR (Doray et al., 2016). Biomass of benthic species is reported for each trawling station (data available at <http://www.ifremer.fr/SIH-indices-campagnes/>) and was extrapolated at ecosystem level:

$$BM_i = \sum \frac{BM_{i,j} \times S_j}{TS_j} \quad (1)$$

with $BM_{i,j}$ the sum of the biomass of species i at all stations of stratum j , S_j the surface of stratum j and TS_j the sum of the trawled areas in the stratum j .

Stratification scheme is based on depth for EVHOE and MEDITS or on ICES statistical squares for IBTS (http://www.ices.dk/marine-data/Documents/DATRAS/Survey_Maps_Datras.pdf; <http://www.sibm.it/SITO%20MEDITS/principaleprogramma.htm>). The sum of the area of all stratum is considered to be the area of the whole ecosystem (15 823 km² for the Eastern English Channel, 86 460 km² for the Bay of Biscay, and 13 860 km² for the Gulf of Lions).

In addition, to offset the lack of acoustic-derived biomass data in the Eastern English Channel, and to correct species-specific catchability, the biomass of all species in the Eastern English Channel and of all trawled species in the Bay of Biscay was corrected using species-specific GOV efficiency, following authors' conclusion that gear efficiency "*provides the proportionality constant between survey cpua*

[capture per unit area] and fish density” and as EVHOE and IBTS use the same gear (Walker et al., 2017). In the absence of efficiency for a given species, the value from the group the species belongs to was used, as groups include species sharing similar life history and habitats (e.g. buried in sediment, close to the seabed or pelagic) and thus similar GOV catchability. Actual values and rationales are provided in Table S1. In the Gulf of Lions, as MEDITS use a different trawl, and as accurate catchability estimations are unavailable, biomass data were not corrected. Yet, benthic fish biomass is much lower in Gulf of Lions than in the Eastern English Channel and the Bay of Biscay when comparing the uncorrected data for all three regions (Fig. S1). For that reason, estimation of total fish biomass in the Gulf of Lions can be considered robust, even though there may be minor deviations from the results presented if corrected with accurate correction factors. In each ecosystem, total biomass per unit area was calculated as the total biomass of all species sampled divided by the sum of the areas of all stratum. Finally, these data were used to calculate relative abundance of each species in each ecosystem.

An a priori list of species to be collected for stable isotope analysis was defined before the surveys (Table S2), notably considering species that represent more than 70% of the catch biomass in each ecosystem. This resulted in discrepancies in the number of species considered in each ecosystem (16 in the Eastern English Channel, 11 in the Bay of Biscay and 7 in the Gulf of Lions). Among these, four were shared between the three environments: two pelagic piscivores (*Scomber scombrus* and *Trachurus trachurus*), one zooplankton feeder (*Engraulis encrasicolus*) and one benthos feeder (*Scylliorhinus canicula*). Individuals of species in this list and of the modal trawled size class were collected, and stored frozen on board. Different individuals were collected for stable isotopes and energy content analyses. Species considered in this study represented 88%, 88% and 77% of the total raw fish biomass collected during surveys in the Eastern English Channel, the Bay of Biscay and the Gulf of Lions, respectively (83%, 68% and 77% after applying correction factors for gear efficiency). They were included in five trophic functional groups defined by previous modeling and statistical works analyzing the fish community composition in each ecosystem and based on species diet and morphology (Bănaru et al., 2013; Giraldo et al., 2017; Lassalle et al., 2011). Species were then considered “benthic” (flatfishes, benthos feeders and demersal piscivores) or “pelagic” (zooplankton feeders and pelagic piscivores). Trophic functional groups allowed a comparison between ecosystems even if species were not the same. Species were also separated based on their average trophic level, using a cut-off at TL 4. This threshold value is classically considered effective as a way to disentangle the complexity of the food web by separating apex predators from small and medium pelagic fish species (Shannon et al., 2014 and references therein).

Back in the laboratory, dorsal muscle samples of fish individuals were dissected, stored frozen, freeze-dried and ground to a fine powder. The powder was then analyzed using a Flash EA 2000 elemental

analyzer equipped with the Smart EA option (Thermo Scientific, Milan, Italy), coupled with a Delta V Plus isotope ratio mass spectrometer with a Conflo IV interface (Thermo Scientific, Bremen, Germany). Stable isotope ratios were expressed following the classical δ notation, as deviation from standards (Vienna Pee Dee Belemnite for $\delta^{13}\text{C}$ and atmospheric N_2 for $\delta^{15}\text{N}$): $\delta X = \left(\frac{R_{\text{sample}}}{R_{\text{standard}}} - 1 \right) \times 10^3$ where X is ^{13}C or ^{15}N and the isotopic ratios $^{13}\text{C}/^{12}\text{C}$ or $^{15}\text{N}/^{14}\text{N}$, respectively. Accuracy of the measurement was checked by repeated analyses of internal samples of acetanilide and peptone and was below 0.10 ‰ for both C and N. C/N ratios were determined with the elemental analyzer and used as a proxy of the lipid content of the samples. Since lipids were depleted in ^{13}C relative to other tissue components (De Niro and Epstein, 1978), lipids were removed from samples with C/N > 4 using cyclohexane following the method developed by Chouvelon et al. (2011).

The main organic matter sources and trophic levels were calculated simultaneously using the Bayesian routine developed within the tRophicPosition R package (Quezada-Romegialli et al., 2018). In contrast to previous isotopic mixing models, this approach does not require assuming one variable to calculate the other (*e.g.* assuming trophic level to infer trophic discrimination factor when estimating the contribution of a source in a mixing model, or assuming the importance of a source to use it as the baseline in trophic level calculation). The Bayesian framework also propagates uncertainties linked with isotopic variability in sources, consumers and trophic discrimination factors (the isotopic difference between two consecutive trophic levels, TDF hereafter). TDF was set to 1 ± 0.5 ‰ for C and for all consumers. For N, a TDF of 3.4 ± 0.5 ‰ was used for teleosts, and of 2.3 ± 0.5 ‰ for chondrichthyans, so as to cope with metabolic differences in N assimilation between these groups (Chouvelon et al., 2012b). Distribution of TDF values was calculated using the simulateTDF function of tRophicPosition package. Convergence of all models was confirmed with a visual examination of trace plots.

Models consider two baseline values, zooplankton as a proxy of pelagic production pathway and bivalve as proxy of benthic production pathway, with specific values for each ecosystem (Table 3). Following other papers on benthic pelagic coupling (*e.g.* Hayden et al., 2019; Kopp et al., 2015), this approach is powerful as it allows identification of the relative importance of the two types of production in the food web fishes belong to, without any information regarding fish diet. Using consumers in the mixing model, rather than the multiplicity of potential sources, (1) allows the use of a proxy of the matter that actually enters the pelagic or benthic pathway, (2) eliminates the bias linked with the wide spatial and temporal variability of the sources (quite impossible to capture within a feasible sampling), (3) eliminates the bias associated with TDF determination (as there would be several trophic levels between source and fish, and that variability in TDF would accumulate at each trophic level), and (4) avoids the use of an undetermined mixing model, as the number of potential sources would be greater than the number of

isotopes. For example, a high contribution of pelagic production to a fish with benthic behavior would track an increased pelagic-benthic coupling even if fish diet remained the same (Hayden et al., 2019).

In the Eastern English Channel, queen scallop *Aequipecten opercularis* individuals were collected simultaneously with fish, and analyzed following the previously described method. Values measured for *Calanus* spp. collected in the same environment in 2016 were used as a proxy of pelagic production (P. Cresson, unpubl. data). In the Bay of Biscay, isotopic ratios measured by Chauvelon et al. (2012b) for the great scallop *Pecten maximus* at stations close to the fish sampling stations were considered (Fig. 1). Values measured for small zooplanktonic groups (calanoids, *Oithona*, *Oncaea* and *Temora*) were used as proxies of pelagic production, as these groups dominate the pelagic environment and pelagic fish diet (Chauvelon et al., 2015; Dessier et al., 2018). In the Gulf of Lions, prickly cockle *Acanthocardia echinata* individuals were sampled during MEDITS and analyzed simultaneously with fish, whereas data for the 200-300 μm zooplankton size class was used as a proxy of pelagic production (D. Bănar, unpubl. data). Source accuracy is a prerequisite of mixing models. Here, the use of bibliographical data, sometimes collected earlier than the collection of fish, may raise questions regarding the accuracy of models' output. Nevertheless, the marked isotopic differences, notably for $\delta^{13}\text{C}$, between zooplankton and bivalves are greater than the interannual variations. For example, considering the Eastern English Channel only, values measured for bivalves collected in 2015 are very similar to values measured in 2001 (Barnes et al., 2009), and values for zooplankton are similar to values collected in 2010 (Kopp et al., 2015). This pattern is also conserved between ecosystems. It may guarantee that general patterns observed remain consistent with actual patterns. The model was first applied on pooled species to estimate average trophic descriptors of each assemblage, and then applied on all species separately.

Posterior distributions of pelagic contribution and trophic levels were then compared between species shared in the three ecosystems, using the pairwise comparison test implemented in *tRophicPosition* package. Outputs of pairwise comparison tests must be read as the probability that a species has a posterior distribution of trophic descriptor (trophic level or pelagic contribution) higher than the distribution of the species it is compared to. Significance threshold was set at 95% (C. Quezada-Romegialli, pers. comm.).

Violin plots were then produced to depict the community structure, by weighting trophic descriptors (e.g. pelagic contribution calculated by the mixing model or trophic level) by species relative biomass. Violin plots based on trophic level can be viewed as analogs of trophic spectra, and violin plots based on trophic contribution picture the relative reliance of fish biomass production on pelagic or benthic pathways.

The relative importance of the pelagic production and the average trophic level of the sampled assemblage were calculated with the following formula adapted from Duffill Telsnig et al. (2019).

$$TD_{assemblage} = \frac{\sum TD_i \times BM_i}{\sum BM} \quad (2)$$

where TD_i is the trophic descriptor (pelagic contribution or trophic level) calculated with the mixing model for species i and $\sum BM$ the total biomass of the species sampled for isotopic analysis.

Table 3: Isotopic values used as baseline in mixing models and for trophic level calculation. Sampling locations are detailed in Fig. 1

Environment	Baseline	$\delta^{13}\text{C}$ (‰) Mean \pm sd	$\delta^{15}\text{N}$ (‰) Mean \pm sd	Rationale and reference
Eastern English Channel	Benthic	-17.59 \pm 0.61	7.16 \pm 0.39	Average value measured for 26 <i>Aequipecten opercularis</i> individuals collected simultaneously with fish during IBTS 2015 survey
	Pelagic	-20.73 \pm 0.83	9.71 \pm 0.54	Average value for <i>Calanus</i> spp. collected in the English Channel in 2016- P. Cresson, unpubl. data
Bay of Biscay	Benthic	-15.49 \pm 0.25	9.49 \pm 0.41	Average values for <i>Pecten maximus</i> sampled during EVHOE surveys (2001-2010) in the Bay of Biscay (Chouvelon et al., 2012a)
	Pelagic	-20.41 \pm 0.33	5.34 \pm 1.05	Isotopic ratios measured in autumn 2011 in the Bay of Biscay for several zooplankton groups (small and medium-sized calanoids, <i>Oithona</i> , <i>Oncaea</i> and <i>Temora</i>), considered as main prey of zooplanktivores <i>S. pilchardus</i> and <i>E. encrasicolus</i> (Chouvelon et al., 2015)
Gulf of Lions	Benthic	-19.05 \pm 0.30	4.18 \pm 0.40	Average value measured for 10 <i>Acanthocardia echinata</i> individuals collected simultaneously with fish during MEDITS 2015 survey
	Pelagic	-20.81 \pm 0.51	3.36 \pm 0.05	Average value for 200- 300 μm zooplankton in the Gulf of Lions, D. Bănaru, unpubl. data

Energy density of four pelagic species collected in the three ecosystems (*E. encrasicolus*, *S. sprattus*, *T. trachurus* and *S. scombrus*) was measured following the protocol previously described in Spitz and Jouma'a (2013). Briefly, whole untreated individuals specifically sampled on board (and not dissected for other analyses) were freeze-dried, ground and burnt in an adiabatic bomb-calorimetry. Energy density measured on dried samples was converted into gross energy content (*i.e.* expressed relatively to wet body mass), as individual water content was measured as the difference in sample weight before

and after freeze-drying so as to take into account inter-individual and interspecific variability (Cresson et al., 2017).

Comparison of stable isotope ratios and energy density in the three environments was performed with linear models considering environment, fish size and their interaction as covariates, as size may affect isotopic ratios and energy density. Size was considered as a pertinent covariable when a significant effect of size on $\delta^{13}\text{C}$, $\delta^{15}\text{N}$ or energy content was detected and if no interaction between size and environment was detected (*i.e.* if size effect was similar between environments). In this case, an ANCOVA and posthoc Tukey tests were rerun without the interaction term. When size effect was not significant, size was no longer considered and means were compared with a one-way ANOVA followed by Tukey posthoc test. When the interaction between environment and size was significant, no mean comparison was performed, as size effect differed between individuals of different size, precluding a robust comparison of means (Table S2). Assumptions of homoscedasticity and of normal distribution of residuals were confirmed with visual examination of residuals vs. fitted and QQ plots. All analyses were run using R software, and the packages car, mass and multcomp (Hothorn et al., 2008; R Core Team, 2018; Venables and Ripley, 2002). Plots were produced with ggplot2 package (Wickham, 2009).

3. Results

Fish assemblage biomass was higher in the Bay of Biscay (32.15 t km⁻²) than in the Eastern English Channel (25.8 t km⁻²), and lower in the Gulf of Lions (12.1 t km⁻²; Fig. 3). When split into functional groups, assemblages were dominated by zooplankton feeders and pelagic piscivores in the Gulf of Lions and in the Bay of Biscay (77% and 15% in the Gulf of Lions, 37% and 27% in the Bay of Biscay, 39% and 2% in the Eastern English Channel respectively) whereas groups of species with benthic affinity (flatfishes, benthic invertebrate feeders and demersal piscivores) represented 57% of the biomass in the Eastern English Channel.

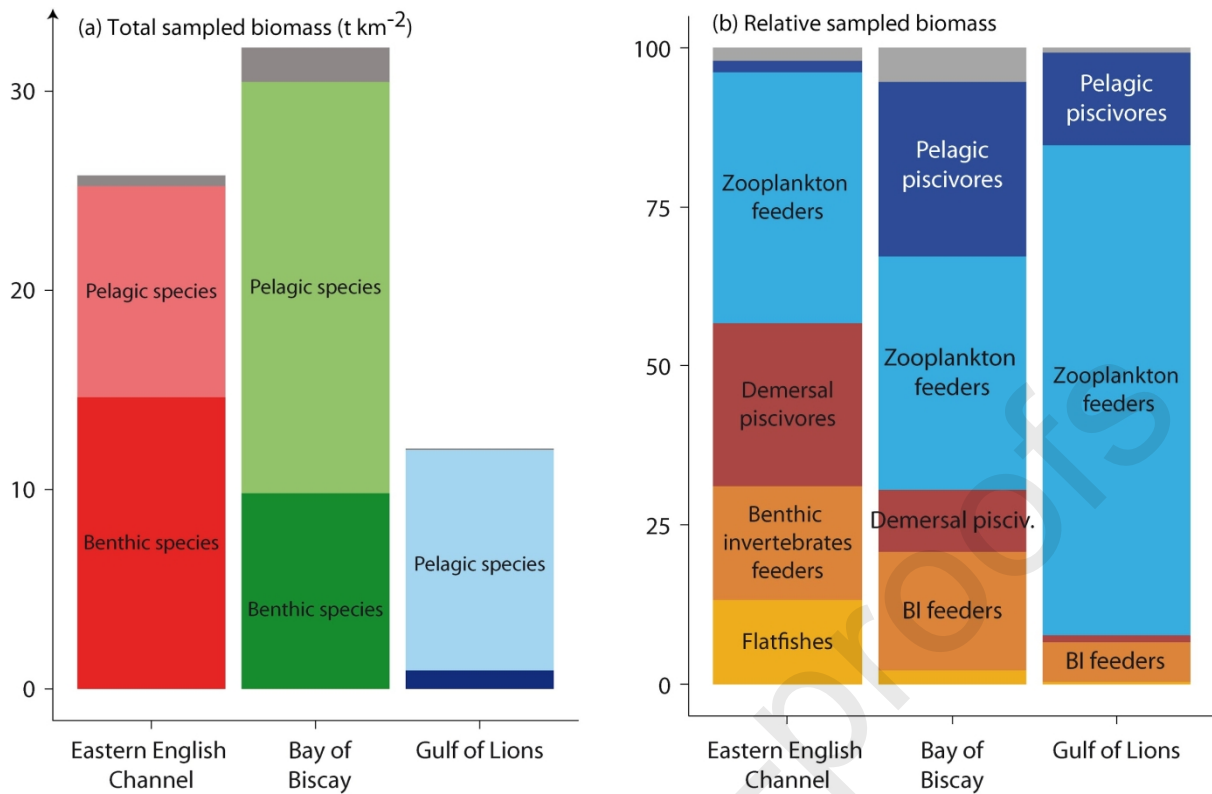


Fig. 3: Composition of fish communities, considering all species, whether sampled for isotopic analyses or not: (a) total biomass and (b) relative biomass by functional groups. Species were attributed to different trophic groups based on previous papers (Bănaru et al., 2013; Giraldo et al., 2017; Lassalle et al., 2011). In the left plot, light colored zones represent pelagic species; dark colored zones represent benthic species. In both plots, grey zones represent species not included in a group.

Average isotopic ratios measured for the sampled assemblages were significantly lower in the Gulf of Lions and higher in the Eastern English Channel for both $\delta^{13}\text{C}$ and $\delta^{15}\text{N}$ (Fig. 3; ANOVA $F_{685,2} = 246.6$ for $\delta^{13}\text{C}$, $F_{685,2} = 1169.7$ for $\delta^{15}\text{N}$, p-values $< 10^{-5}$). Average trophic level of the sampled assemblage was markedly higher in the Eastern English Channel (3.87) than in the two other ecosystems (associated probabilities of 0.94 for EEC > BoB and of 0.98 for EEC > GoL), while trophic levels cannot be considered different between the Bay of Biscay and the Gulf of Lions (3.54 and 3.55 respectively), with an associated probability of 0.56 (Table S1).

In the Eastern English Channel and the Bay of Biscay, benthic (e.g. *Scyliorhinus canicula*, *Limanda limanda*, *Mustelus asterias* or *Leucoraja naevus*) and pelagic species (e.g. *Sardina pilchardus*, *Engraulis encrasicolus*, *Scomber scombrus* or *Trachurus trachurus*) differed in their average $\delta^{13}\text{C}$ values by $\sim 2\text{‰}$, the latter exhibiting lower values (Fig. 4). The difference was lower in the Gulf of Lions ($\sim 1\text{‰}$). Regarding $\delta^{15}\text{N}$ and trophic levels, as expected, lowest values were measured in the three ecosystems for zooplankton feeding species (e.g. *Clupea harengus*, *E. encrasicolus* or *S. pilchardus*). Seven species exhibited high (≥ 4) trophic levels in the Eastern English Channel (*M. surmuletus*, *E. gurnardus*, *G. morhua*, *P. pollachius*, *M. merlangus*, *S. canicula* and *D. labrax*), four in the Bay of Biscay (*T. luscus*,

L. naevus, *M. asterias* and *S. canicula*) and one only in the Gulf of Lions (*S. canicula*). Ranges between maximum and minimum values for $\delta^{15}\text{N}$ and trophic level were thus markedly different (5.3 ‰ and 1.6 TL in the Eastern English Channel, 3.5 ‰ and 2.5 TL in the Bay of Biscay, and 2.0 ‰ and 0.6 TL in the Gulf of Lions; Table S1).

Pelagic production was identified as the main source fueling food webs in the Gulf of Lions and Bay of Biscay, with a similar contribution of 85% for both ecosystems ($p=0.35$ for BoB < GoL). In contrast, the average pelagic contribution was markedly lower in the Eastern English Channel (46%) with high probabilities testifying significant differences ($p=0.98$ for EEC < BoB, $p=0.95$ for EEC < GoL).

These general patterns are consistently observed at species level: in the Gulf of Lions, for all species, average pelagic contribution was 90% or more and the upper limit of the confidence interval was 100% (Table S2). The apparent discrepancy in the Gulf of Lions (average contribution of 85% at assemblage level while all contributions are higher than 90% for all species) may result from the impossibility of applying different TDF for chondrichthyans and teleosts within the assemblage. High pelagic contributions were also observed in the Bay of Biscay for all species, even if higher benthic contributions were calculated for some species such as *M. asterias* or *L. naevus*. In the Eastern English Channel, modal pelagic contributions ranged between 27% for *L. limanda* and 79% for *T. trachurus*. A value of 100% for the higher limit of the 95% confidence interval was calculated for *D. labrax* and *T. trachurus* only. Interestingly, in the Eastern English Channel, pelagic and benthic contributions were pretty similar and close to 50% for most species with trophic levels higher than 4, and also for the pelagic species *S. sprattus*.

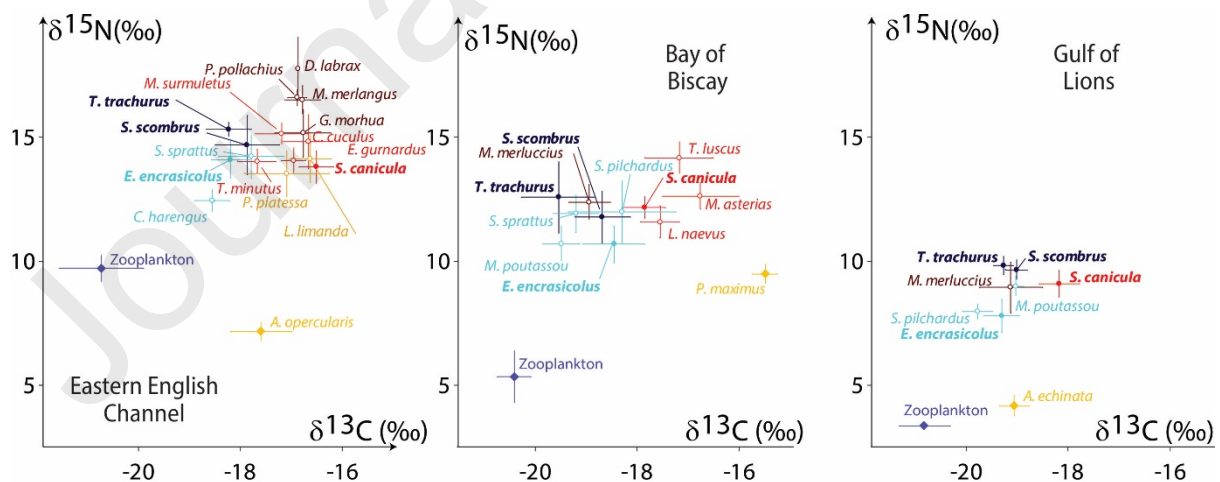


Fig. 4: Stable isotopes biplots. Species shared between the three environments and used for comparative purposes are highlighted with full dots and boldface characters. Symbols are color-coded based on the functional group of the species (light blue: zooplankton feeders; dark blue: pelagic piscivores; red: benthos feeders; orange: flatfishes; brown: demersal piscivores). Isotopic baselines (zooplankton and bivalves) are represented by blue and orange diamonds respectively

As a result of the combination of biomass and trophic data, the shape of the trophic contribution and trophic level violin plots differed between ecosystems. In the Eastern English Channel, 52.1% of the biomass was fueled by pelagic production (Fig. 5), whereas plots for the Bay of Biscay and the Gulf of Lions lied in the upper part of the panel, as a result of the dominance of pelagic-fueled biomass (79.3 and 93.6% respectively). These values differed from mixing models outputs due to biomass weighting (Table S1). Similarly, violin plots based on trophic levels exhibited different shapes, with most of the biomass at low trophic levels in the Bay of Biscay and the Gulf of Lions, and a sharper plot in the Gulf of Lions, as a result of the quick decrease of biomass with increasing trophic levels. The violin was bimodal in the Eastern English Channel, with one peak for mid trophic level species (~3.6) and the other at TL > 4. Average biomass-weighted trophic level of the community was of 3.85 in the Eastern English Channel, 3.60 in the Bay of Biscay and 3.35 in the Gulf of Lions.

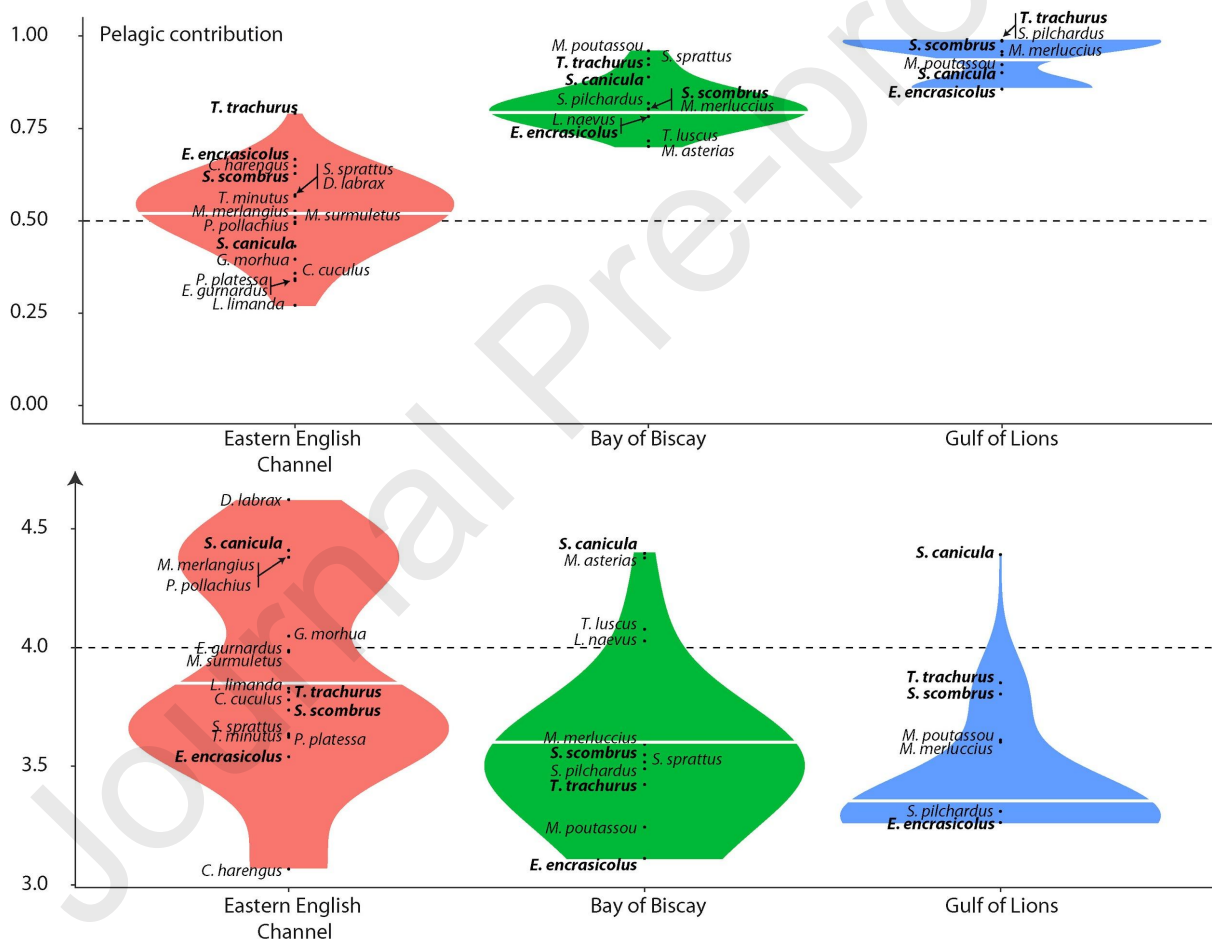


Fig. 5: Biomass-weighted violin plots of pelagic contribution (upper panel), and of trophic levels (lower panel) of the three fish assemblages. The wider zone of each plot showed what contribution of pelagic production supports the largest biomass of the community, or the trophic level where most of the biomass lies. Shared species are highlighted with boldfaced characters. Dotted black lines represent the equal contribution of the two sources, and the cut-off at a trophic level of 4. White horizontal lines represent the biomass-weighted average pelagic contribution and trophic level.

The pattern observed at assemblage level was similar for the four shared species. Isotopic ratios were significantly higher in the Eastern English Channel than in the two other ecosystems (Fig. 6). Trophic levels measured for these species did not vary much between all ecosystems (between 3.5 and 3.8 for *S. scombrus*, 3.6 and 3.9 for *T. trachurus*, 3.1 and 3.5 for *E. encrasicolus* and of 4.4 for *S. canicula*), presumably demonstrating a similar trophic role of these species in the food webs of the three ecosystems. The pelagic contribution did not differ between the Bay of Biscay and the Gulf of Lions (differences of about 1 to 9%, with associated probabilities ranging between 0.56 and 0.72). In contrast, the pelagic contribution was systematically lower in the Eastern English Channel, these differences being more or less pronounced between the four species: contributions were lower by ~10 to 20 % for *E. encrasicolus* and *T. trachurus*, by ~30% for *S. scombrus* and by 45 to 50% for *S. canicula*. Probabilities confirmed significant or markedly different contributions between the Eastern English Channel and the Bay of Biscay ($p > 0.95$ for all species but *E. encrasicolus*) and between the Eastern English Channel and the Gulf of Lions ($0.80 < p < 0.90$), but similarities between the Bay of Biscay and the Gulf of Lions ($0.52 \leq p \leq 0.72$).

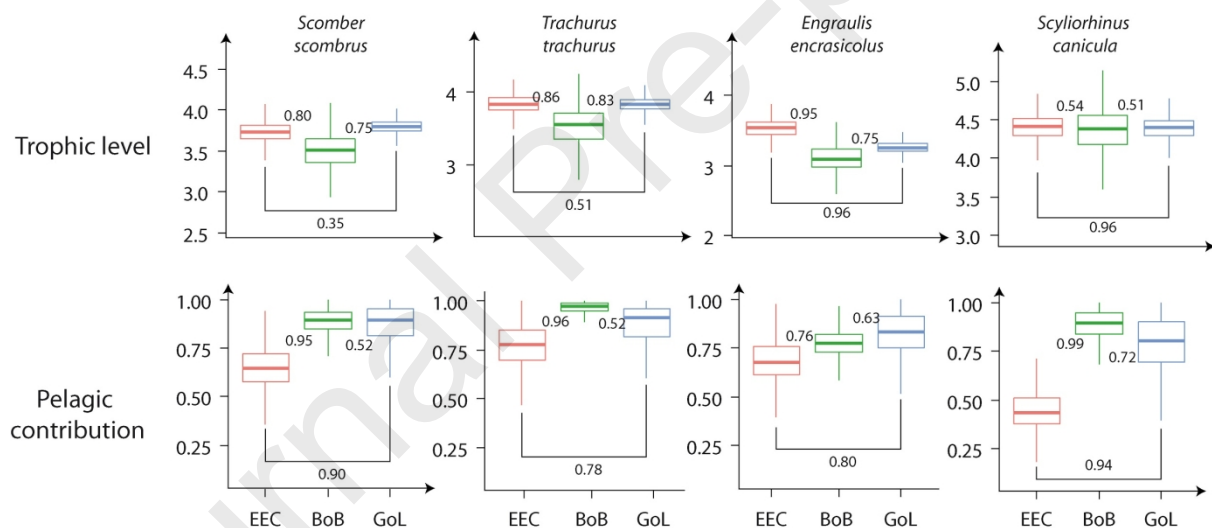


Fig. 6: Comparison of trophic levels and pelagic contributions, calculated as posterior distribution estimates by tRophicPosition package. Values represent the probability that the higher mode is significantly higher.

Despite different size effects on energy content between environments being precluded from robust statistical comparisons (Table S3), and although *T. trachurus* and *S. sprattus* individuals were larger in the Eastern English Channel, higher energy densities were observed in the Bay of Biscay for all species but *S. scombrus*. Energy densities were always lower in the Gulf of Lions, but as a potential result of markedly lower sizes for *S. scombrus*, *T. trachurus* and *S. sprattus* (Table 4). At species level, *S. sprattus* was the sole species exhibiting higher energy density than other species (whether significantly higher than two or all other species) in all environments.

Table 4: Energy density (mean \pm sd) of shared species (kJ g⁻¹ wet mass). Superscript letters represent significant differences between species within each environment

	Eastern English Channel			Bay of Biscay			Gulf of Lions		
	n	Size (mm)	Energy density (kJ g ⁻¹ wet mass)	n	Size (mm)	Energy density (kJ g ⁻¹ wet mass)	n	Size (mm)	Energy density (kJ g ⁻¹ wet mass)
<i>Scomber scombrus</i>	5	208 \pm 16	6.04 \pm 1.60 ^a	35	209 \pm 10	5.37 \pm 0.69 ^b	14	149 \pm 22	4.54 \pm 0.68 ^b
<i>Trachurus trachurus</i>	15	130 \pm 35	4.49 \pm 0.51 ^b	28	108 \pm 28	5.47 \pm 1.05 ^b	9	91 \pm 14	3.87 \pm 0.32 ^b
<i>Engraulis encrasicolus</i>	5	96 \pm 5	4.38 \pm 0.36 ^b	37	107 \pm 20	5.37 \pm 0.72 ^b	7	102 \pm 9	4.12 \pm 0.34 ^b
<i>Sprattus sprattus</i>	4	106 \pm 5	6.12 \pm 0.41 ^a	34	90 \pm 9	8.12 \pm 1.39 ^a	12	74 \pm 6	6.32 \pm 1.48 ^a

4. Discussion

4.1. What production fuels each ecosystem?

Results of the present study demonstrated that fish assemblages in the Gulf of Lions and the Bay of Biscay are mainly fueled by pelagic primary production while benthic production dominates in the English Channel. The predominance of pelagic production as the main source of organic matter is consistent with previous empirical and modelling studies (Bănaru et al., 2013; Day et al., 2019; Lassalle et al., 2011). Pelagic production can notably enter food webs after sedimentation, through the use of detrital matter of pelagic origin. These results are also consistent with the general assumption that phytoplankton is the main primary producer in the global ocean (Uitz et al., 2010) and the main component of marine POM in French marine environments (Liénart et al., 2017). Isotopic ratios are also higher than the very negative values commonly measured for fish under the influence of rivers inputs ($< -20\text{‰}$, e.g. Darnaude et al., 2004). A direct notable integration of riverine organic matter can thus be excluded, despite the studied ecosystems being partly under the influence of the four largest French rivers (*i.e.* the Seine River in the Eastern English Channel, the Loire and Gironde Rivers in the Bay of Biscay, and the Rhône River in the Gulf of Lions). It may thus be reasonably assumed that the influence of rivers on fish assemblages on French marine continental shelves would be limited to an increase of phytoplankton productivity through nutrient inputs (Doray et al., 2018a), or to the direct integration of riverine OM in some specific systems such as estuaries and/or under specific oceanographic conditions (Darnaude et al., 2004; Le Pape et al., 2013).

Despite a similar trophic functioning between the Bay of Biscay and the Gulf of Lions, the isotopic pattern observed in the Gulf of Lions (lower $\delta^{15}\text{N}$ values but rather similar trophic levels) confirms the importance of oligotrophy as a major driver of this ecosystem (Chouvelon et al., 2018). Phytoplanktonic communities in oligotrophic ecosystems are largely dominated by nano- and picophytoplankton, including diazotrophs (Liénart et al., 2017). Lower N isotopic ratios measured for small-sized phytoplankton (Rau et al., 1990) are classically proposed to explain the low isotopic ratios measured for zooplankton (Espinasse et al., 2014), filter feeders (Cresson et al., 2016) and fish (Chouvelon et al., 2018; Cossa et al., 2012) in the Gulf of Lions. It could nonetheless be acknowledged that the high pelagic contribution in these two systems may result from the lack of benthic species in the isotopic dataset, and notably in the Bay of Biscay where sampled species represent a lower proportion of the biomass. Among the missed species, the one with the highest biomass is *Chelidonyctis cuculus* ($104 \cdot 10^3$ t, 4 % of the assemblage biomass), a benthic species with high (around -17‰) $\delta^{13}\text{C}$ values, consistent with a high reliance on benthic production (Chouvelon et al., 2012b). But equivalent biomasses were also recorded for pelagic species (*e.g.* *Boops boops* or *Capros aper*), meaning that the effect of missed species on the general pattern may be limited. This bias would be even more limited in the Gulf of Lions even if species sampled represent a lower proportion of the assemblage biomass than in the two other systems. While *Sprattus sprattus* was the only important species not included in this system, and with a

relative biomass of ~10%, this species displayed trophic similarities with other zooplankton feeding species such as anchovy or sardine (Brosset et al., 2016; Le Bourg et al., 2015). In addition, benthic fish species displayed $\delta^{13}\text{C}$ values close to those of the pelagic species, i.e. around -18‰ (e. g. Cresson et al., 2014a; Polunin et al., 2001; Valls et al., 2014). These patterns further support the importance of pelagic production as the only source fueling the vast majority of fish assemblages in the Gulf of Lions, whether through the consumption of pelagic organisms or through the consumption of sedimented organic matter of pelagic origin, a pattern potentially amplified by recent changes in the pelagic community (Brosset et al., 2016; section 4.2 of the present paper).

The pattern observed in the Eastern English Channel highlights the trophic peculiarity of this ecosystem: higher $\delta^{13}\text{C}$ values observed at both assemblage level and for shared species are consistent with a higher trophic contribution of benthic production. The Eastern English Channel is markedly shallower than the two other French environments investigated here and previous studies evidenced the major effect of depth on benthic-pelagic coupling (i.e. upwards fluxes) in this environment (Giraldo et al., 2017; Kopp et al., 2015). Interestingly, in the neighboring but somehow deeper North Sea ecosystem (mean depth 155 m), benthic contribution to the fish assemblage ranged between 29 and 41% (Duffill Telsnig et al., 2019). Most marine systems are fueled by the sedimentation of pelagic primary production (i. e. pelagic-benthic coupling), even at shallow depth (e. g. Carlier et al., 2007; Cresson et al., 2014b in the Gulf of Lions; Le Loc'h et al., 2008 in the Bay of Biscay). A predominant contribution of benthic production is usually limited to very specific systems such as shallow marine coastal or estuarine systems (Christianen et al., 2017; Griffiths et al., 2017) and large freshwater lakes (Vander Zanden et al., 2005). To our knowledge, the Eastern English Channel is one of the few marine systems worldwide where benthic production plays a key trophic role. In the Seto Inland Sea, Japan, Takai et al. (2002) measured high $\delta^{13}\text{C}$ values for most fish species, including anchovy and mackerel, as a result of the consumption of benthic invertebrates. In the South Atlantic Bight, off Florida, microphytobenthos can contribute up to 40 % to the primary production even at 40 m depth (Jahnke et al., 2000). As microphytobenthos have high $\delta^{13}\text{C}$ (Riera, 2007), a significant integration of this source in the food web may explain the high isotopic ratios recorded in the Eastern English Channel, as exemplified for juveniles soles in different systems (Le Pape et al., 2013). Bacterial transformation of organic matter in sediment or an integration of filter-feeders' pseudofeces cannot be excluded without further analysis (Hayden et al., 2019). These hypotheses cannot be ruled out without further investigation of basal fluxes of OM, notably to ascertain the importance of filter-feeders (Garcia et al., 2011) or OM bacterial alteration in the sediment.

Differences in basal food sources among the three ecosystems are also supported by the patterns observed for shared species and the increased differences in the pelagic contribution. The pelagic contribution was fairly similar between systems for the zooplanktivorous species (*E. encrasicolus*), slightly different for pelagic piscivores (mostly *T. trachurus*) and markedly high for the benthic species (*S. canicula*). Due to their larger

trophic plasticity, and their potential detritivory, benthic species are considered as actual opportunists while pelagic species may be more specialists and thus constrained in their feeding choices (van Denderen et al., 2018). A recent study demonstrated that benthic and generalist species responded to a eutrophication-driven increase in pelagic primary production by integrating higher amounts of pelagic derived material, while pelagic species remained pelagic (Hayden et al., 2019). A similar pattern was observed between the ecosystems investigated here. The pelagic contribution was markedly lower for *S. canicula* in the benthic-based ecosystem while discrepancies remained limited for the three pelagic species, confirming the overwhelming importance of benthic production to fuel the food web in the Eastern English Channel. Nonetheless, comparing the patterns observed for pelagic species may limit the generalization of this hypothesis. The greater difference of the pelagic contribution for *S. scombrus* compared to the two other species may reflect the ability of this species to supplement its diet with benthic prey, when others are restricted to pelagic subsidies. It may also explain why *S. scombrus* is the only species displaying higher energy content in the Eastern English Channel.

4.2. Productivity and community structure

Representation of ecological assemblages along discrete or continuous trophic axes -*i.e.* as trophic pyramids or spectrum - are classical ways to picture communities, understand fluxes and detect anthropic effects as their shape is driven by underlying ecological processes (Bourdaud et al., 2016; Trebilco et al., 2013). The results observed here support the idea that the basal inflow of energy is a major determinant of fish assemblage structure (Udy et al., 2019; van Denderen et al., 2018; Ware and Thomson, 2005). In the Bay of Biscay and the Gulf of Lions, pelagic primary production is predominant, and drives the predominance of pelagic fish species, *i.e.* specialists *sensu* van Denderen et al. (2018). In the Gulf of Lions oligotrophic context, low downwards fluxes of pelagic matter do not support a high production of benthic fish species, explaining the low contribution of these groups (Tecchio et al., 2013; Table S4). In contrast, the structure of the fish assemblage in the Eastern English Channel clearly supports the idea that benthic and/or demersal species are more plastic in their ability to use subsidies from both pathways, when conditions (*e.g.* depth or intensity of pelagic and benthic productions) allow their use, resulting in their dominance over pelagic species. Interestingly, empirical results observed here showed similar patterns to outputs of a model forced by mechanistic energy transfer rules and applied to two case studies, *i.e.* a shelf system in the Bering Sea with high benthic and pelagic productions and an oligotrophic gyre in Hawaii (Petrik et al., 2019). This consistency is another argument in favor of a strong driving effect of flux intensity on the fish assemblage structure.

Shapes of the trophic spectrum observed in the Bay of Biscay and in the Gulf of Lions are consistent with the theoretical expectations. Nonetheless, the spectrum is more bottom-heavy in the Gulf of Lions, as most of the biomass occurs at low trophic levels, even if the biomass of benthic high trophic level species may have been underestimated, due to the impossibility of correcting the biomass for trawl efficiency. Pelagic

production is not sufficient to support a high secondary production, explaining the lowest biomass recorded for the assemblage. The truncation of the food web and the predominance of small pelagic species is consistent with theoretical expectations in oligotrophic ecosystems (Petrik et al., 2019). The predominance of zooplankton feeding species is also classical in the Gulf of Lions. Low energy densities recorded for zooplankton, notably when compared with counterparts in the Bay of Biscay (Chen et al., 2019; Dessier et al., 2018), also confirms that the basal energy is too low to support losses linked with energy dissipation at several trophic levels (Bănaru et al., 2013, 2019).

Lower energy densities recorded for fishes in the Gulf of Lions are consistent with previous values (Albo-Puigserver et al., 2017) and may result from recent changes observed in the pelagic ecosystem (Van Beveren et al., 2014). The body condition of pelagic species, such as sardines and anchovies, declined due to dietary switch and changes in zooplankton abundance and quality (Saraux et al., 2019). Interestingly, the sprat's trophic niche was demonstrated to be larger than the niches of sardine and anchovy (Brosset et al., 2016). The trophic plasticity of sprat was proposed as an explanation for its higher energy content, as observed in the present and previous works (Le Bourg et al., 2015; Spitz and Jouma'a, 2013). It may also explain why the benthic contribution was higher for sprat than for herring and anchovy in the Eastern English Channel, and also why sprat populations are strongly increasing in many European ecosystems (ICES, 2018; Saraux et al., 2019). In contrast, higher pelagic primary production in the Bay of Biscay may result in increased fluxes in the food web, sufficient to support a higher biomass of pelagic piscivores, consistently with higher fluxes calculated by Ecopath models in the Bay of Biscay than in the Gulf of Lions (Lassalle et al., 2011; Bănaru et al., 2013; Tab. S4). It may also explain the higher values recorded for energy density. The consistency with previous values recorded over the 2002-2010 period seem to demonstrate some stability of ecosystem functioning over the last two decades (Dubreuil and Petitgas, 2009; Gatti et al., 2018; Spitz et al., 2013; Spitz and Jouma'a, 2013). As a result, and even if the minimum trophic level is lower in the Bay of Biscay than in the Gulf of Lions, the biomass maximum occurs at an upper trophic level in the Bay of Biscay. Lower depth may notably allow increased downward fluxes of pelagic production, sufficient to support some benthic production, already observed in model outputs (Lassalle et al., 2011). A previous study calculated that 16 % of the pelagic production reaches the seabed in the Atlantic, compared to only 9% in the Mediterranean (van Denderen et al., 2018). As a result, benthic species make a greater contribution in the Bay of Biscay assemblage than in that of the Gulf of Lions.

As a result of the importance of the benthic pathway in the Eastern English Channel food web, the assemblage also differs, notably regarding the total biomass, the predominance of benthic species and the higher average trophic level resulting in the unexpected shape of the trophic spectrum. Trebilco et al. (2013) identified two factors that may be at the origin of the odd biomass distribution pattern along trophic levels. First, bias in biomass estimation may contribute to an overestimation of the relative importance of some groups. This

hypothesis cannot be completely excluded here. Accurate estimation of fish biomass is a complex task, usually based on several methods that all suffer from their own specific biases. Consequently, it should be kept in mind that biomass values are dependent on the methodology or gear used. When biomass results from trawling, gear catchability limits the robustness of biomass estimation, since species or size classes can escape the trawl. The use of correction factors (*e.g.* Walker et al., 2017) can be convenient to increase accuracy, but these factors have to be calculated for all gears, species and environments. Stock assessment data is also classically used as a source of biomass, notably in ecosystem models (Bănaru et al., 2013; Girardin et al., 2018; Lassalle et al., 2011; Travers-Trolet et al., 2019). Using such data is nonetheless questionable when addressing questions at assemblage level, as assessment data would be available for harvested species only. Similarly, estimating pelagic species biomass is rendered complex by the aggregative behavior of these species and by the random catches (or acoustic detection) of schools, and by potential questions regarding the accuracy of correction factors. The high importance of zooplankton feeders in the English Channel in winter may for example appear consistent with expectations regarding the functioning of the ecosystem, and with spawning aggregations of Downs herring (Denis et al., 2016), but a careful examination of biomass data show that sprat represented most of the biomass in this group.

Nonetheless, odd-shaped biomass pyramids may also occur in subsidized systems as recently exemplified in temperate and tropical ecosystems (Graham et al., 2017; Mourier et al., 2016; Trebilco et al., 2016) and in biogeochemical model outputs (Petrik et al., 2019), assuming that benthic-pelagic coupling can be viewed as a form of subsidization (McMeans et al., 2015; Polis et al., 2004). The equivalent contribution of pelagic and benthic pathways in the Eastern English Channel may thus explain the shape of the spectrum. Food webs fueled by two trophic sources support higher biomass in the community and at higher trophic levels (Petrik et al., 2019; Udy et al., 2019; Vander Zanden et al., 2005). This hypothesis is further supported by the predominance of the biomass at higher (>4) trophic levels, consistently with the idea that species at higher trophic positions are able to benefit from several trophic subsidies and thus act as couplers of both benthic and pelagic pathways (Rooney et al., 2006; Udy et al., 2019). Benthic-demersal predators, such as whiting or cod, thus play a crucial role in the functioning in the Eastern English Channel ecosystem (Girardin et al., 2018).

4.3. Importance of an accurate understanding of trophic structure and functioning to monitor marine fish assemblages

The current alteration of marine ecosystems worldwide largely supports the need for an integrated vision of their functioning, both to understand the underlying processes and also to manage the sustainability of exploited systems (Halpern et al., 2019). Such an approach requires numerous data to provide quantitative indicators of ecosystem functioning. In most previous studies, qualitative and quantitative data were not collected simultaneously; model outputs were used to fill the data gaps, and then to identify drivers of ecosystem functioning (*e. g.* Lassalle et al., 2011; Bănaru et al., 2013, 2019; Girardin et al., 2018, Travers-

Trolet et al. 2019 for the systems considered in the present study) or to calculate management indicators (Bourdaud et al., 2016; Coll et al., 2016; Shannon et al., 2014). Here, we have demonstrated that optimized fisheries surveys can provide valuable in-situ empirical data that may be used to for integrated assessment and monitoring of marine systems. To some extent, ecosystem surveys could be considered as “class X” multitrophic surveys *sensu* Seibold et al. (2018), *i.e.* surveys that cover several trophic levels but with no actual consideration for the trophic features. By adding some additional information (stable isotope and energy content measurement) to the core protocol of the existing fisheries-designed survey (biomass estimation), the present work confirmed that surveys can be easily changed into “class 3” multitrophic surveys, that cover all species but not all trophic levels, and can allow depiction of ecosystem functioning, relating it with the specificities of each system and producing management-focused indicators based on fish communities (*e.g.* mean trophic level or number of species with TL>4). At least, new insights on ecosystem functioning provided by these empirical data can be compared with model outputs, providing here a new approach combining both empirical and modeling approaches (Bănaru et al., 2019; Pethybridge et al., 2018; Travers-Trolet et al., 2019). Similarly, repeated measurement of trophic descriptors (*e.g.* trophic levels) over long periods of time could be a powerful method to detect changes of the system functioning.

Nevertheless, there are still some missing points that may be proposed as future pathways to follow, so as to achieve “class 4” trophic studies, *i.e.* studies covering all species and all trophic levels, viewed as optimal to achieve an integrated ecosystem vision and management process (*sensu* Seibold et al., 2018). From the historical fisheries focus of the surveys, focus is put on fish assemblages and low trophic level groups may have appeared to be of minor interest, consistently with the expected risks of the addition of new data collection to existing surveys (de Boois, 2019). Several studies have demonstrated the importance of low trophic level consumers as drivers of trophic functioning in marine systems (Cresson et al., 2019, 2014b; Day et al. 2020; Garcia et al., 2011; Le Loc’h and Hily, 2005); including zooplankton and benthic invertebrates as actual components of the food web (and not just as isotopic references to study the fish community) seems to be a crucial future research avenue, as these groups may largely drive trophic fluxes in the communities. But fisheries-focused surveys do not routinely operate benthic invertebrate sampling devices, precluding any accurate estimation of this group’s functioning. Efficient proxies have thus to be developed to produce robust estimators of benthos biomass from trawling operations (Day et al., 2020). Estimating the part of benthic production that actually supports fish production, by example by assessing consumption by means of stomach content analyses, is also an important step necessary to understand the role of invertebrates in benthic-pelagic coupling (Giraldo et al., 2017; Tableau et al., 2019)

As most food web studies have focused on higher organization levels, most studies, including the present one, considered average-sized individuals, as they are thought of as largely representative of the average pattern at species level. Nevertheless, the ecological consequences of individual specialization has emerged

as central topic (Bolnick et al., 2011; Matich et al., 2011), with consequences that may propagate up to high levels of organization (Clegg et al., 2018). From a trophic point of view, size effect on fish trophic level has been extensively demonstrated (*e.g.* Jennings and van der Molen, 2015) and ontogenetic changes of habitat and diet may also create slight variations of the trophic descriptors that should be considered in future studies. Even if average patterns remain pertinent to address the general patterns, considering such sources of variations may represent a useful way to achieve greater accuracy, and to better depict fine scale trophic patterns.

Data accessibility

Raw biomass data from trawling are available online on the Ifremer Fisheries Information System database (<http://www.ifremer.fr/SIH-indices-campagnes/>). Extrapolated biomass data, trawled areas, in addition to individual data on biometry, stable isotopes and energy content, can be found at SEANOE (<https://www.seanoe.org/data/00511/62264/>).

Acknowledgements

This study was funded by the French Ministry for Ecology, Sustainable Development and Energy (MEDDE). We are grateful to the technical and scientific crews of R/Vs *Thalassa* and *L'Europe* for their work during all surveys, to all technical staff and students (A. Esposito, C. Ortu, L. Merquiol, M. Roscian, N. Bassols) who dissected fishes and prepared samples for isotopic analyses, and to several colleagues for fruitful discussions on this project (A. Brind'Amour, C. Dupuy, G. Lassalle, C. Giraldo, R. Girardin, RU Stine, M. Travers Trolet). Environmental data included in Table 1 were retrieved from EU Copernicus Marine Service Information (https://resources.marine.copernicus.eu/?option=com_csw&task=results). The CPER is 2014-2020 MARCO, funded by the French government, the Region Haut de France and Ifremer is acknowledged for its support to P. Cresson. The IUF (Institut Universitaire de France) is acknowledged for its support to P. Bustamante as a Senior Member. Thanks are due to the CPER (Contrat de Projet Etat-Région) and the FEDER (Fonds Européen de Développement Régional) for funding the IRMS of LIENSs laboratory, and to FEDER 1166-39417 for funding the MIO laboratory project. We also want to thank two anonymous reviewers who provided extensive and relevant suggestions on previous versions of this paper. This work is dedicated to the memory of Pierre Cazenave, who throughout his life cherished the Atlantic Ocean and the waves that wash the Basque coast.

Bibliographical references

Albo-Puigserver, M., Muñoz, A., Navarro, J., Coll, M., Pethybridge, H., Sánchez, S., Palomera, I., 2017. Ecological energetics of forage fish from the Mediterranean Sea: Seasonal dynamics and interspecific differences. *Deep Sea Res. Part II Top. Stud. Oceanogr.* 140, 74–82. doi:10.1016/j.dsr2.2017.03.002

- Alheit, J., Beare, D., Casini, M., Dickey-Collas, M., Dransfeld, L., Harma, C., Heino, M., Massé, J., Möllman, C., Nogueira, E., et al. 2010. Life-cycle spatial patterns of small pelagic fish in the Northeast Atlantic, in: Petitgas, P (Ed.), ICES Cooperative Research Report n°306.
- Bănar, D., Diaz, F., Verley, P., Campbell, R., Navarro, J., Yohia, C., Oliveros-Ramos, R., Mellon-Duval, C., Shin, Y.-J., 2019. Implementation of an end-to-end model of the Gulf of Lions ecosystem (NW Mediterranean Sea). I. Parameterization, calibration and evaluation. *Ecol. Model.* 401, 1–19. doi:10.1016/j.ecolmodel.2019.03.005
- Bănar, D., Mellon-Duval, C., Roos, D., Bigot, J.-L., Souplet, A., Jadaud, A., Beaubrun, P., Fromentin, J.-M., 2013. Trophic structure in the Gulf of Lions marine ecosystem (north-western Mediterranean Sea) and fishing impacts. *J. Mar. Syst.* 111, 45–68. doi:/10.1016/j.jmarsys.2012.09.010
- Barnes, C., Jennings, S., Barry, J.T., 2009. Environmental correlates of large-scale spatial variation in the $\delta^{13}\text{C}$ of marine animals. *Est. Coast Shelf Sci* 81, 368–374.
- Baudrier, J., Lefebvre, A., Galgani, F., Saraux, C., Doray, M., 2018. Optimising French fisheries survey for Marine Strategy Framework Directive integrated ecosystem monitoring. *Mar. Policy* 94, 10–19. <https://doi.org/10.1016/j.marpol.2018.04.024>
- Baustian, M.M., Hansen, G.J., de Kluijver, A., Robinson, K., Henry, E.N., Knoll, L.B., Rose, K.C., Carey, C.C., 2014. Linking the bottom to the top in aquatic ecosystems: mechanisms and stressors of benthic-pelagic coupling. *Eco- X Symp. Proc.* 25–47.
- Boecklen, W.J., Yarnes, C.T., Cook, B.A., James, A.C., 2011. On the use of stable isotopes in trophic ecology. *Annu. Rev. Ecol. Evol. Syst.* 42, 411–440. doi:10.1146/annurev-ecolsys-102209-144726
- Bolnick, D.I., Amarasekare, P., Araújo, M.S., Bürger, R., Levine, J.M., Novak, M., Rudolf, V.H., Schreiber, S.J., Urban, M.C., Vasseur, D.A., 2011. Why intraspecific trait variation matters in community ecology. *Trends Ecol. Evol.* 26, 183–192.
- Bourdaud, P., Gascuel, D., Bentorcha, A., Brind'Amour, A., 2016. New trophic indicators and target values for an ecosystem-based management of fisheries. *Ecol. Indic.* 61, 588–601. doi:10.1016/j.ecolind.2015.10.010
- Bourdeix, J., 2015. PELMED 2015 cruise, RV L'Europe. doi:http://dx.doi.org/10.17600/15006400
- Briant, N., Savoye, N., Chouvelon, T., David, V., Rodriguez, S., Charlier, K., Sonke, J.E., Chiffolleau, J.F., Brach-Papa, C., Knoery, J., 2018. Carbon and nitrogen elemental and isotopic ratios of filter-feeding bivalves along the French coasts: An assessment of specific, geographic, seasonal and multi-decadal variations. *Sci. Total Environ.* 613-614, 196–207. doi:10.1016/j.scitotenv.2017.08.281
- Brosset, P., Le Bourg, B., Costalago, D., Bănar, D., Van Beveren, E., Bourdeix, J., Fromentin, J., Ménard, F., Saraux, C., 2016. Linking small pelagic dietary shifts with ecosystem changes in the Gulf of Lions. *Mar. Ecol. Prog. Ser.* 554, 157–171. doi:10.3354/meps11796
- Carrier, A., Riera, P., Amouroux, J.-M., Bodiou, J.-Y., Grémare, A., 2007. Benthic trophic network in the Bay of Banyuls-sur-Mer (northwest Mediterranean, France): An assessment based on stable carbon and nitrogen isotopes analysis. *Estuar. Coast. Shelf Sci.* 72, 1–15. doi:10.1016/j.ecss.2006.10.001
- Chen, C.-T., Bănar, D., Carlotti, F., Fauchoux, M., Harmelin-Vivien, M., 2019. Seasonal variation in biochemical and energy content of size-fractionated zooplankton in the Bay of Marseille (North-Western Mediterranean Sea). *J. Mar. Syst.* 199, 103223. doi:10.1016/j.jmarsys.2019.103223
- Chouvelon, T., Cresson, P., Bouchouca, M., Brach-Papa, C., Bustamante, P., Crochet, S., Marco-Miralles, F., Thomas, B., Knoery, J., 2018. Oligotrophy as a major driver of mercury bioaccumulation in medium-to high-

trophic level consumers: A marine ecosystem-comparative study. *Environ. Pollut.* 233, 844–854. doi:10.1016/j.envpol.2017.11.015

Chouvelon, T., Spitz, J., Caurant, F., Mèndez-Fernandez, P., Autier, J., Lassus-Débat, A., Chappuis, A., Bustamante, P., 2012a. Enhanced bioaccumulation of mercury in deep-sea fauna from the Bay of Biscay (north-east Atlantic) in relation to trophic positions identified by analysis of carbon and nitrogen stable isotopes. *Deep Sea Res. Part Oceanogr. Res. Pap.* 65, 113–124. doi:10.1016/j.dsr.2012.02.010

Chouvelon, T., Spitz, J., Caurant, F., Mèndez-Fernandez, P., Chappuis, A., Laugier, F., Le Goff, E., Bustamante, P., 2012b. Revisiting the use of $\delta^{15}\text{N}$ in meso-scale studies of marine food webs by considering spatio-temporal variations in stable isotopic signatures – The case of an open ecosystem: The Bay of Biscay (North-East Atlantic). *Prog. Oceanogr.* 101, 92–105. doi:10.1016/j.pocean.2012.01.004

Chouvelon, T., Spitz, S., Cherel, Y., Caurant, F., Sirmel, R., Mèndez-Fernandez, P., Bustamante, P., 2011. Inter-specific and ontogenic differences in $\delta^{13}\text{C}$ and $\delta^{15}\text{N}$ values and Hg and Cd concentrations in cephalopods. *Mar. Ecol. Prog. Ser.* 433, 107–120.

Chouvelon, T., Violamer, L., Dessier, A., Bustamante, P., Mornet, F., Pignon-Mussaud, C., Dupuy, C., 2015. Small pelagic fish feeding patterns in relation to food resource variability: an isotopic investigation for *Sardina pilchardus* and *Engraulis encrasicolus* from the Bay of Biscay (north-east Atlantic). *Mar. Biol.* 162, 15–37. doi:10.1007/s00227-014-2577-5

Christianen, M., Middelburg, J.J., Holthuijsen, S., Jouta, J., Compton, T., Van der Heide, T., Piersma, T., Sinninghe Damsté, J.S., Van der Veer, H., Schouten, S., 2017. Benthic primary producers are key to sustain the Wadden Sea food web: stable carbon isotope analysis at landscape scale. *Ecology* 98, 1498–1512.

Clegg, T., Ali, M., Beckerman, A.P., 2018. The impact of intraspecific variation on food web structure. *Ecology* 99, 2712–2720. doi:10.1002/ecy.2523

Coll, M., Shannon, L.J., Kleisner, K.M., Juan-Jordá, M.J., Bundy, A., Akoglu, A.G., Banaru, D., Boldt, J.L., Borges, M.F., Cook, A., et al. 2016. Ecological indicators to capture the effects of fishing on biodiversity and conservation status of marine ecosystems. *Ecol. Indic.* 60, 947–962. doi:10.1016/j.ecolind.2015.08.048

Cossa, D., Harmelin-Vivien, M., Mellon-Duval, C., Loizeau, V., Averty, B., Crochet, S., Chou, L., Cadiou, J.F., 2012. Influence of bioavailability, trophic position, and growth on methylmercury in hakes (*Merluccius merluccius*) from Northwestern Mediterranean and Northeast Atlantic. *Environ. Sci. Technol.* 46, 4885–4893.

Cresson, P., Fabri, M.C., Bouchouca, M., Brach-Papa, C., Chavanon, F., Jadaud, A., Knoery, J., Miralles, F., Cossa, D., 2014a. Hg in organisms from the Northwestern Mediterranean slope: importance of the food sources. *Sci. Total Environ.* 497-498, 229–238. doi:10.1016/j.scitotenv.2014.07.069

Cresson, P., Le Direach, L., Rouanet, É., Goberville, E., Astruch, P., Ourgaud, M., Harmelin-Vivien, M., 2019. Functional traits unravel temporal changes in fish biomass production on artificial reefs. *Mar. Environ. Res.* 145, 137–146. doi:10.1016/j.marenvres.2019.02.018

Cresson, P., Ruitton, S., Harmelin-Vivien, M., 2016. Feeding strategies of co-occurring suspension feeders in an oligotrophic environment. *Food Webs* 6, 19–28. doi:10.1016/j.fooweb.2015.12.002

Cresson, P., Ruitton, S., Harmelin-Vivien, M., 2014b. Artificial reefs do increase secondary biomass production: mechanisms evidenced by stable isotopes. *Mar. Ecol. Prog. Ser.* 509, 15–26. doi:10.3354/meps.10866

- Cresson, P., Travers-Trolet, M., Rouquette, M., Timmerman, C.-A., Giraldo, C., Lefebvre, S., Ernande, B., 2017. Underestimation of chemical contamination in marine fish muscle tissue can be reduced by considering variable wet:dry weight ratios. *Mar. Pollut. Bull.* 123, 279–285. doi:10.1016/j.marpolbul.2017.08.046
- Croll, D.A., Maron, J.L., Estes, J.A., Danner, E.M., Byrd, G.V., 2005. Introduced Predators Transform Subarctic Islands from Grassland to Tundra. *Science* 307, 1959–1961.
- Darnaude, A., Salen-Picard, C., Polunin, N.V.C., Harmelin-Vivien, M., 2004. Trophodynamic linkage between river runoff and coastal fishery yield elucidated by stable isotope data in the Gulf of Lions (NW Mediterranean). *Oecologia* 138, 325–332.
- Day, L., Kopp, D., Robert, M., Le Bris, H., 2019. Trophic ecology of large gadiforms in the food web of a continental shelf ecosystem. *Prog. Oceanogr.* 175, 105–114. doi:10.1016/j.pocean.2019.03.007
- Day, L., Le Bris, H., Saulnier, E., Pinsivy, L., Brind'Amour, A. 2020. Benthic prey production index estimated from trawl survey supports the food limitation hypothesis in coastal fish nurseries. *Est Coast Shelf Sci.* 235, 106594. doi:10.1016/j.ecss.2020.106594
- De Boois, I., 2019. Moving towards integrated ecosystem monitoring, in: ICES Cooperative Research Report No. 347. p. 44. doi:10.17895/ices.pub.4703
- De Niro, M., Epstein, S., 1978. Influence of diet on the distribution of carbon isotopes in animals. *Geochem. Cosmochim. Acta* 42, 495–506.
- Denis, J., Vallet, C., Courcot, L., Lefebvre, V., Caboche, J., Antajan, E., Marchal, P., Loots, C., 2016. Feeding strategy of Downs herring larvae (*Clupea harengus* L.) in the English Channel and North Sea. *J. Sea Res.* 115, 33–46. doi:10.1016/j.seares.2016.07.003
- Dessier, A., Bustamante, P., Chouvelon, T., Huret, M., Pagano, M., Marquis, E., Rousseaux, F., Pignon-Mussaud, C., Mornet, F., et al. 2018. The spring mesozooplankton variability and its relationship with hydrobiological structure over year-to-year changes (2003–2013) in the southern Bay of Biscay (Northeast Atlantic). *Prog. Oceanogr.* doi:10.1016/j.pocean.2018.04.011
- Doray, M., Duhamel, E., Huret, M., Petitgas, P., 2015. PELGAS 2015 cruise, RV Thalassa. doi:http://dx.doi.org/10.17600/15001900
- Doray, M., Massé, J., Petitgas, P., 2010. Pelagic fish stock assessment by acoustic methods at Ifremer.
- Doray, M., Petitgas, P., Huret, M., Duhamel, E., Romagnan, J.B., Authier, M., Dupuy, C., Spitz, J., 2018a. Monitoring small pelagic fish in the Bay of Biscay ecosystem, using indicators from an integrated survey. *Prog. Oceanogr.* 166, 168–188. doi:10.1016/j.pocean.2017.12.004
- Doray, M., Petitgas, P., Romagnan, J.B., Huret, M., Duhamel, E., Dupuy, C., Spitz, J., Authier, M., Sanchez, F., Berger, L. et al. 2018b. The PELGAS survey: Ship-based integrated monitoring of the Bay of Biscay pelagic ecosystem. *Prog. Oceanogr.* 166, 15–29. doi:10.1016/j.pocean.2017.09.015
- Doray, M., Petitgas, P., Sarau, C., Cornou, A.S., 2016. EchoR: R package for computing indices of the state of fish population and communities, based on fisheries acoustic data. R package [WWW Document]. URL <https://gitlab.ifremer.fr/md0276b/echor>.
- Dubreuil, J., Petitgas, P., 2009. Energy density of anchovy *Engraulis encrasicolus* in the Bay of Biscay. *J. Fish Biol.* 74, 521–534. doi:10.1111/j.1095-8649.2008.02143.x

- Duffill Telsnig, J.I., Jennings, S., Mill, A.C., Walker, N.D., Parnell, A.C., Polunin, N.V.C., 2019. Estimating contributions of pelagic and benthic pathways to consumer production in coupled marine food webs. *J. Anim. Ecol.* 88, 405–415. doi:10.1111/1365-2656.12929
- Duhamel, E., Salaun, M., Pawloski, L., 2014. EVHOE 2014 cruise, RV Thalassa. doi:http://dx.doi.org/10.17600/14002000
- Espinasse, B., Harmelin-Vivien, M., Tiano, M., Guilloux, L., Carlotti, F., 2014. Patterns of variations in C and N stable isotope ratios in size-fractionated zooplankton in the Gulf of Lion, NW Mediterranean Sea. *J. Plankton Res.* 36, 1204–1215.
- Estes, J.A., Terborgh, J., Brashares, J.S., Power, M.E., Berger, J., Bond, W.J., Carpenter, S.R., Essington, T.E., Holt, R.D., Jackson, J.B.C., et al. 2011. Trophic Downgrading of Planet Earth. *Science* 333, 301–306. doi:10.1126/science.1205106
- Froese, R., Pauly, D., 2017. FishBase.World Wide Web electronic publication. www.fishbase.org. [WWW Document]. URL (accessed 3.30.17).
- Furey, N.B., Armstrong, J.B., Beauchamp, D.A., Hinch, S.G., 2018. Migratory coupling between predators and prey. *Nat. Ecol. Evol.* 2, 1846–1853. doi:10.1038/s41559-018-0711-3
- Garcia, C., Chardy, P., Dewarumez, J.-M., Dauvin, J., 2011. Assessment of benthic ecosystem functioning through trophic web modelling: the example of the eastern basin of the English Channel and the Southern Bight of the North Sea. *Mar. Ecol.* 32, 72–86. doi:10.1111/j.1439-0485.2011.00428.x
- Gascuel, D., Bozec, Y.-M., Chassot, E., Colomb, A., Laurans, M., 2005. The trophic spectrum: theory and application as an ecosystem indicator. *ICES J. Mar. Sci.* 62, 443–452. doi:10.1016/j.icesjms.2004.12.013
- Gatti, P., Cominassi, L., Duhamel, E., Grellier, P., Le Delliou, H., Le Mestre, S., Petitgas, P., Rabiller, M., Spitz, J., Huret, M., 2018. Bioenergetic condition of anchovy and sardine in the Bay of Biscay and English Channel. *Prog. Oceanogr.* 166, 129–138. doi:10.1016/j.pocean.2017.12.006
- Giraldo, C., Ernande, B., Cresson, P., Kopp, D., Cachera, M., Travers-Trolet, M., Lefebvre, S., 2017. Depth gradient on the resource use of a fish community from a semi-enclosed sea. *Limnol. Oceanogr.* doi:10.1002/lno.10561
- Girardin, R., Fulton, E.A., Lehuta, S., Rolland, M., Thébaud, O., Travers-Trolet, M., Vermard, Y., Marchal, P., 2018. Identification of the main processes underlying ecosystem functioning in the Eastern English Channel, with a focus on flatfish species, as revealed through the application of the Atlantis end-to-end model. *Estuar. Coast. Shelf Sci.* 201, 208–222. doi:10.1016/j.ecss.2016.10.016
- Graham, N.A.J., McClanahan, T.R., MacNeil, M.A., Wilson, S.K., Cinner, J.E., Huchery, C., Holmes, T.H., 2017. Human Disruption of Coral Reef Trophic Structure. *Curr. Biol.* 27, 231–236. doi:10.1016/j.cub.2016.10.062
- Graham, N.A., Wilson, S.K., Carr, P., Hoey, A.S., Jennings, S., MacNeil, M.A., 2018. Seabirds enhance coral reef productivity and functioning in the absence of invasive rats. *Nature* 559, 250. doi:doi:10.1038/s41586-018-0202-3
- Griffiths, J.R., Kadin, M., Nascimento, F.J.A., Tamelander, T., Törnroos, A., Bonaglia, S., Bonsdorff, E., Brüchert, V., Gårdmark, A., Järnström, M., et al. 2017. The importance of benthic-pelagic coupling for marine ecosystem functioning in a changing world. *Glob. Change Biol.* 23, 2179–2196. doi:10.1111/gcb.13642

- Halpern, B.S., Frazier, M., Afflerbach, J., Lowndes, J.S., Micheli, F., O'Hara, C., Scarborough, C., Selkoe, K.A., 2019. Recent pace of change in human impact on the world's ocean. *Sci. Rep.* 9, 11609. doi:10.1038/s41598-019-47201-9
- Hayden, B., Harrod, C., Thomas, S.M., Eloranta, A.P., Myllykangas, J.-P., Siwertsson, A., Præbel, K., Knudsen, R., Amundsen, P.-A., Kahilainen, K.K., 2019. From clear lakes to murky waters – tracing the functional response of high-latitude lake communities to concurrent “greening” and “browning.” *Ecol. Lett.* 22, 807–816. doi:10.1111/ele.13238
- Hothorn, T., Bretz, F., Westfall, P., 2008. Simultaneous inference in general parametric models. *Biom. J.* 50, 346–363.
- ICES, 2018. Report of the Herring Assessment Working Group for the Area South of 62°N (HAWG). 29-31 January 2018 and 12-20 March 2018. ICES HQ, Copenhagen, Denmark. ICES CM 2018/ACOM:07.
- Jadaud, A., Métral, L., 2015. MEDITS 2015 Cruise R/V L'Europe. doi:http://dx.doi.org/10.17600/15006300
- Jahnke, R.A., Nelson, J.R., Marinelli, R.L., Eckman, J.E., 2000. Benthic flux of biogenic elements on the Southeastern US continental shelf: influence of pore water advective transport and benthic microalgae. *Cont. Shelf Res.* 20, 109–127.
- Jennings, S., van der Molen, J., 2015. Trophic levels of marine consumers from nitrogen stable isotope analysis: estimation and uncertainty. *ICES J. Mar. Sci. J. Cons.* 72, 2289–2300. doi:/10.1093/icesjms/fsv120
- Kopp, D., Lefebvre, S., Cachera, M., Villanueva, M.C., Ernande, B., 2015. Reorganization of a marine trophic network along an inshore–offshore gradient due to stronger pelagic–benthic coupling in coastal areas. *Prog. Oceanogr.* 130, 157–171. doi:10.1016/j.pocean.2014.11.001
- Lassalle, G., Lobry, J., Le Loc'h, F., Bustamante, P., Certain, G., Delmas, D., Dupuy, C., Hily, C., Labry, C., Le Pape, O., Marquis, E., Petitgas, P., Pusineri, C., Ridoux, V., Spitz, J., Niquil, N., 2011. Lower trophic levels and detrital biomass control the Bay of Biscay continental shelf food web: Implications for ecosystem management. *Prog. Oceanogr.* 91, 561–575. doi:10.1016/j.pocean.2011.09.002
- Layman, C.A., Giery, S.T., Buhler, S., Rossi, R., Penland, T., Henson, M.N., Bogdanoff, A.K., Cove, M.V., Irizarry, A.D., Schalk, C.M., 2015. A primer on the history of food web ecology: Fundamental contributions of fourteen researchers. *Food Webs* 4, 14–24. doi:10.1016/j.fooweb.2015.07.001
- Le Bourg, B., Bănar, D., Saraux, C., Nowaczyk, A., Le Luherne, E., Jadaud, A., Bigot, J.L., Richard, P., 2015. Trophic niche overlap of sprat and commercial small pelagic teleosts in the Gulf of Lions (NW Mediterranean Sea). *J. Sea Res.* 103, 138–146. doi:10.1016/j.seares.2015.06.011
- Le Loc'h, F., Hily, C., 2005. Stable carbon and nitrogen isotope analysis of *Nephrops norvegicus* / *Merluccius merluccius* fishing grounds in the Bay of Biscay (Northeast Atlantic). *Can. J. Fish. Aquat. Sci.* 62, 123–132.
- Le Loc'h, F., Hily, C., Grall, J., 2008. Benthic community and food web structure on the continental shelf of the Bay of Biscay (North Eastern Atlantic) revealed by stable isotopes analysis. *J. Mar. Syst.* 72, 17–34. doi:10.1016/j.jmarsys.2007.05.011
- Le Pape, O., Modéran, J., Beaunée, G., Riera, P., Nicolas, D., Savoye, N., Harmelin-Vivien, M., Darnaude, A.M., Brind'Amour, A., Le Bris, H., et al. 2013. Sources of organic matter for flatfish juveniles in coastal and estuarine nursery grounds: A meta-analysis for the common sole (*Solea solea*) in contrasted systems of Western Europe. *J. Sea Res.* 75, 85–95. doi:10.1016/j.seares.2012.05.003

- Libralato, S., Pranovi, F., Stergiou, K.I., Link, J.S., 2014. Trophodynamics in marine ecology: 70 years after Lindeman. *Mar. Ecol. Prog. Ser.* 512, 1–7.
- Liénart, C., Savoye, N., Bozec, Y., Breton, E., Conan, P., David, V., Feunteun, E., Grangeré, K., Kerhervé, P., Lebreton, B., et al. 2017. Dynamics of particulate organic matter composition in coastal systems: A spatio-temporal study at multi-systems scale. *Prog. Oceanogr.* 156, 221–239. doi:10.1016/j.pocean.2017.03.001
- Lynam, C.P., Llope, M., Möllmann, C., Helaouët, P., Bayliss-Brown, G.A., Stenseth, N.C., 2017. Interaction between top-down and bottom-up control in marine food webs. *Proc. Natl. Acad. Sci.* 114, 1952–1957. doi:10.1073/pnas.1621037114
- Matich, P., Heithaus, M.R., Layman, C.A., 2011. Contrasting patterns of individual specialization and trophic coupling in two marine apex predators. *J. Anim. Ecol.* 80, 294–305. doi:10.1111/j.1365-2656.2010.01753.x
- McMeans, B.C., McCann, K.S., Humphries, M., Rooney, N., Fisk, A.T., 2015. Food web structure in temporally-forced ecosystems. *Trends Ecol. Evol.* 30, 662–672.
- Mourier, J., Maynard, J., Parravicini, V., Ballesta, L., Clua, E., Domeier, M.L., Planes, S., 2016. Extreme Inverted Trophic Pyramid of Reef Sharks Supported by Spawning Groupers. *Curr. Biol.* 26, 2011–2016. doi:10.1016/j.cub.2016.05.058
- Österblom, H., Olsson, O., Blenckner, T. & Furness, R.W. (2008) Junk-food in marine ecosystems. *Oikos*, 117, 967–977.
- Pauly, D., Christensen, V., Dalsgaard, J., Froese, R., Torres, F., 1998. Fishing Down Marine Food Webs. *Science* 279, 860–863. doi:10.1126/science.279.5352.860
- Pethybridge, H.R., Choy, C.A., Polovina, J.J., Fulton, E.A., 2018. Improving Marine Ecosystem Models with Biochemical Tracers. *Annu. Rev. Mar. Sci.* 10, 199–228. doi:10.1146/annurev-marine-121916-063256
- Petrik, C.M., Stock, C.A., Andersen, K.H., van Denderen, P.D., Watson, J.R., 2019. Bottom-up drivers of global patterns of demersal, forage, and pelagic fishes. *Prog. Oceanogr.* 176, 102124. doi:10.1016/j.pocean.2019.102124
- Pinnegar, J.K., 2014. DAPSTOM - An Integrated Database & Portal for Fish Stomach Records. Version 4.7. Centre for Environment, Fisheries & Aquaculture Science, Lowestoft, UK. February 2014.
- Polis, G.A., Power, M.E., Huxel, G.R., 2004. Food webs at the landscape level. University of Chicago Press.
- Polunin, N.V.C., Morales-Nin, B., Pawsey, W., Cartes, J., Pinnegar, J., Moranta, J., 2001. Feeding relationships in Mediterranean bathyal assemblages elucidated by stable and nitrogen carbon isotope data. *Mar. Ecol. Prog. Ser.* 220, 13–23.
- Quezada-Romegialli, C., Jackson, A.L., Hayden, B., Kahilainen, K.K., Lopes, C., Harrod, C., 2018. tRophicPosition, an R package for the Bayesian estimation of trophic position from consumer stable isotope ratios. *Methods Ecol. Evol.* 9, 1592–1599. doi:10.1111/2041-210X.13009
- Rau, G.H., Teyssie, J.L., Rassoulzadegan, F., Fowler, S.W., 1990. $^{13}\text{C}/^{12}\text{C}$ and $^{15}\text{N}/^{14}\text{N}$ variations among size-fractionated marine particles: implications for their origin and trophic relationships. *Mar. Ecol.-Prog. Ser.* 59, 33–38.
- R Core Team, 2018. R: A language and environment for statistical computing. R foundation for Statistical computing, Vienna, Austria.

- Riera, P., 2007. Trophic subsidies of *Crassostrea gigas*, *Mytilus edulis* and *Crepidula fornicata* in the Bay of Mont Saint Michel (France): A $\delta^{13}\text{C}$ and $\delta^{15}\text{N}$ investigation. *Estuar. Coast. Shelf Sci.* 72, 33–41.
- Rooney, N., McCann, K., Gellner, G., Moore, J.C., 2006. Structural asymmetry and the stability of diverse food webs. *Nature* 442, 265–269.
- Saraux, C., Fromentin, J.-M., Bigot, J.-L., Bourdeix, J.-H., Morfin, M., Roos, D., Van Beveren, E., Bez, N., 2014. Spatial Structure and Distribution of Small Pelagic Fish in the Northwestern Mediterranean Sea. *PLOS ONE* 9, e111211. doi:10.1371/journal.pone.0111211
- Saraux, C., Van Beveren, E., Brosset, P., Queiros, Q., Bourdeix, J.-H., Dutto, G., Gasset, E., Jac, C., Bonhommeau, S., Fromentin, J.-M., 2019. Small pelagic fish dynamics: A review of mechanisms in the Gulf of Lions. *Deep Sea Res. Part II Top. Stud. Oceanogr.* 159, 52–61. doi:10.1016/j.dsr2.2018.02.010
- Seibold, S., Cadotte, M.W., Maclvor, J.S., Thorn, S., Müller, J., 2018. The Necessity of Multitrophic Approaches in Community Ecology. *Trends Ecol. Evol.* 33, 754–764. doi:10.1016/j.tree.2018.07.001
- Shannon, L., Coll, M., Bundy, A., Gascuel D., G., Heymans JJ, Kleisner K, Lynam CP, Piroddi C, Tam J, Travers-Trolet M, Shin Y, 2014. Trophic level-based indicators to track fishing impacts across marine ecosystems. *Mar. Ecol. Prog. Ser.* 512, 115–140.
- Silberberger, M.J., Renaud, P.E., Kröncke, I., Reiss, H., 2018. Food-Web Structure in Four Locations Along the European Shelf Indicates Spatial Differences in Ecosystem Functioning. *Front. Mar. Sci.* 5, 119. doi:10.3389/fmars.2018.00119
- Spitz, J., Chauvelon, T., Cardinaud, M., Kostecki, C., Lorance, P., 2013. Prey preferences of adult sea bass *Dicentrarchus labrax* in the northeastern Atlantic: implications for bycatch of common dolphin *Delphinus delphis*. *ICES J. Mar. Sci. J. Cons.* 70, 452–461.
- Spitz, J., Jouma'a, J., 2013. Variability in energy density of forage fishes from the Bay of Biscay (north-east Atlantic Ocean): reliability of functional grouping based on prey quality. *J. Fish Biol.* 82, 2147–2152. doi:10.1111/jfb.12142
- Spitz, J., Ridoux, V., Mourocq, E., Schoen, V., 2010. Proximate composition and energy content of forage species from the Bay of Biscay: high- or low-quality food? *ICES J. Mar. Sci.* 67, 909–915. doi:10.1093/icesjms/fsq008
- Spitz, J., Trites, A.W., Becquet, V., Brind'Amour, A., Cherel, Y., Galois, R., Ridoux, V. (2012) Cost of living dictates what whales, dolphins and porpoises eat: the importance of prey quality on predator foraging strategies. *PLoS One*, 7, e50096.
- Stock, C.A., John, J.G., Rykaczewski, R.R., Asch, R.G., Cheung, W.W., Dunne, J.P., Friedland, K.D., Lam, V.W., Sarmiento, J.L., Watson, R.A., 2017. Reconciling fisheries catch and ocean productivity. *Proc. Natl. Acad. Sci.* 114, E1441–E1449. doi:10.1073/pnas.1610238114
- Tableau, A., Le Bris, H., Saulnier, E., Le Pape, O., Brind'Amour, A., 2019. Novel approach for testing the food limitation hypothesis in estuarine and coastal fish nurseries. *Mar. Ecol. Prog. Ser.* 629, 117–131.
- Takai, N., Mishima, Y., Yoroazu, A., Hoshika, A., 2002. Carbon sources for demersal fish in the western Seto Inland Sea, Japan, examined by $\delta^{13}\text{C}$ and $\delta^{15}\text{N}$ analyses. *Limnol. Oceanogr.* 47, 730–741. doi:10.4319/lo.2002.47.3.0730

- Tecchio, S., van Oevelen, D., Soetaert, K., Navarro, J., Ramírez-Llodra, E., 2013. Trophic Dynamics of Deep-Sea Megabenthos Are Mediated by Surface Productivity. *PLoS ONE* 8, e63796. doi:10.1371/journal.pone.0063796
- Thompson, R.M., Brose, U., Dunne, J.A., Hall Jr., R.O.H., Hladiz, S., Kitching, R.L., Martinez, N.D., Rantala, R., Romanuk, T.N., Stouffer, D.B., Tylianakis, J.M., 2012. Food webs: reconciling the structure and function of biodiversity. *Trends Ecol. Evol.* 27, 689–697.
- Travers-Trolet, M., Coppin, F., Cresson, P., Cugier, P., Oliveros-Ramos, R., Verley, P., 2019. Emergence of negative trophic level-size relationships from a size-based, individual-based multispecies fish model. *Ecol. Model.* 410, 108800. doi:10.1016/j.ecolmodel.2019.108800
- Trebilco, R., Baum, J.K., Salomon, A.K., Dulvy, N.K., 2013. Ecosystem ecology: size-based constraints on the pyramids of life. *Trends Ecol. Evol.* 28, 423–431. doi:10.1016/j.tree.2013.03.008
- Trebilco, R., Dulvy, N.K., Anderson, S.C., Salomon, A.K., 2016. The paradox of inverted biomass pyramids in kelp forest fish communities. *Proc. R. Soc. B Biol. Sci.* 283, 20160816. doi:10.1098/rspb.2016.0816
- Trites, A. W. & Donnelly, C. P. (2003). The decline of Steller sea lions *Eumetopias jubatus* in Alaska: a review of the nutritional stress hypothesis. *Mamm. Rev* 33, 3–28.
- Trueman, C.N., Johnston, G., O’Hea, B., MacKenzie, K.M., 2014. Trophic interactions of fish communities at midwater depths enhance long-term carbon storage and benthic production on continental slopes. *Proc. R. Soc. B Biol. Sci.* 281. doi:10.1098/rspb.2014.0669
- Udy, J., Wing, S., O’Connell-Milne, S., Durante, L., McMullin, R., Kolodzey, S., Frew, R., 2019. Regional differences in supply of organic matter from kelp forests drive trophodynamics of temperate reef fish. *Mar. Ecol. Prog. Ser.* 621, 19–32. doi:10.3354/meps12974
- Uitz, J., Claustre, H., Gentili, B., Stramski, D., 2010. Phytoplankton class-specific primary production in the world’s oceans: Seasonal and interannual variability from satellite observations. *Glob. Biogeochem Cycles* 24, GB3016. doi:10.1029/2009gb003680
- Valls, M., Sweeting, C.J., Olivar, M.P., Fernández de Puelles, M.L., Pasqual, C., Polunin, N.V.C., Quetglas, A., 2014. Structure and dynamics of food webs in the water column on shelf and slope grounds of the western Mediterranean. *J. Mar. Syst.* 138, 171–181. doi:10.1016/j.jmarsys.2014.04.002
- Van Beveren, E., Bonhommeau, S., Fromentin, J.-M., Bigot, J.-L., Bourdeix, J.-H., Brosset, P., Roos, D., Sarau, C., 2014. Rapid changes in growth, condition, size and age of small pelagic fish in the Mediterranean. *Mar. Biol.* 161, 1809–1822. doi:10.1007/s00227-014-2463-1
- Van Denderen, P.D., Lindegren, M., MacKenzie, B.R., Watson, R.A., Andersen, K.H., 2018. Global patterns in marine predatory fish. *Nat. Ecol. Evol.* 2, 65–70. doi:10.1038/s41559-017-0388-z
- Vander Zanden, M., Essington, T.E., Vadeboncoeur, Y., 2005. Is pelagic top-down control in lakes augmented by benthic energy pathways? *Can. J. Fish. Aquat. Sci.* 62, 1422–1431. doi:10.1139/f05-042
- Venables, W.N., Ripley, B.D., 2002. *Modern Applied Statistics with S*. Fourth Edition. Springer, New York.
- Verin, Y., 2015. IBTS 2015 cruise, RV Thalassa,. doi:10.17600/15001500
- Walker, N.D., Maxwell, D.L., Le Quesne, W.J., Jennings, S., 2017. Estimating efficiency of survey and commercial trawl gears from comparisons of catch-ratios. *ICES J. Mar. Sci.* 74, 1448–1457. doi:10.1093/icesjms/fsw250

Ware, D.M., Thomson, R.E., 2005. Bottom-up ecosystem trophic dynamics determine fish production in the Northeast Pacific. *Science* 308, 1280–1284.

Wickham, H., 2009. *ggplot2: elegant graphics for data analysis*. Springer Science & Business Media.

Wuenschel, M.J., McElroy, W.D., Oliveira, K., McBride, R.S., 2019. Measuring fish condition: an evaluation of new and old metrics for three species with contrasting life histories. *Can. J. Fish. Aquat. Sci.* 76, 886–903. doi:10.1139/cjfas-2018-0076

Journal Pre-proofs

Supplementary material

Table S1: Table S1: Actual catchability values used to correct for trawl efficiency, for all species whether or not included in stable isotope analyses (Walker et al., 2017). Species-specific values were used as much as possible; rationale for the choice of other values when not available is explained in the dedicated column

Species	Functional group	Rationale	Efficiency
<i>Acantholabrus palloni</i>	Not assigned	Value calculated for species included in GRP4: " Predominantly close to the seabed, but not on it"	0.33749648
<i>Agonus cataphractus</i>	Not assigned	Species-specific value	0.00655191
<i>Ammodytes</i> sp.	Not assigned	Value calculated for <i>Ammodytes tobianus</i>	0.32526617
<i>Anguilla anguilla</i>	Not assigned	Species-specific value	1.23837094
<i>Aphia minuta</i>	Not assigned	Species-specific value	0.04560401
<i>Arctozenus risso</i>	Not assigned	Value calculated for species included in GRP6:"Pelagic "	0.04560401
<i>Argentina</i> sp.	Not assigned	Value calculated for species included in GRP6:"Pelagic "	0.04560401
<i>Argyrosomus regius</i>	Not assigned	Value calculated for species included in GRP5:"Midwater species with some seabed association "	0.28045171
<i>Arnoglossus</i> sp.	Flatfish	Value calculated for species included in GRP3: 'Predominantly on the seabed—flat "	0.33623829
<i>Atherina presbyter</i>	Not assigned	Species-specific value	0.21114201
<i>Bathysolea profundicola</i>	Flatfish	Value calculated for species included in GRP3: 'Predominantly on the seabed—flat "	0.33623829
<i>Benthoosema glaciale</i>	Not assigned	Value calculated for species included in GRP6:"Pelagic "	0.04560401
<i>Beryx decadactylus</i>	Not assigned	Value calculated for species included in GRP6:"Pelagic "	0.04560401
<i>Beryx splendens</i>	Not assigned	Value calculated for species included in GRP6:"Pelagic "	0.04560401
<i>Blennius ocellaris</i>	Not assigned	Value calculated for species included in GRP2: On or near the seabed—anguilliform or fusiform	0.21114201
<i>Boops boops</i>	Zooplankton Feeder	Value calculated for species included in GRP6:"Pelagic "	0.04560401
<i>Buenia jeffreysii</i>	Not assigned	Value calculated for species included in GRP2: On or near the seabed—anguilliform or fusiform	0.21114201
<i>Buglossidium luteum</i>	Flatfish	Value calculated for species included in GRP3: 'Predominantly on the seabed—flat "	0.33623829
<i>Callionymus lyra</i>	Benthos Feeder	Species-specific value	0.05332825
<i>Callionymus maculatus</i>	Benthos Feeder	Species-specific value	0.28045171
<i>Cepola macrophthalmia</i>	Not assigned	Value calculated for species included in GRP6:"Pelagic "	0.04560401
<i>Chelidonichthys cuculus</i>	Benthos Feeder	Species-specific value	0.03728068
<i>Chelidonichthys lucernus</i>	Benthos Feeder	Value calculated for species included in GRP4: " Predominantly close to the seabed, but not on it"	0.33749648

Species	Functional group	Rationale	Efficiency
<i>Chelidonichthys obscurus</i>	Not assigned	Value calculated for species included in GRP4: " Predominantly close to the seabed, but not on it"	0.33749648
<i>Chimaera monstrosa</i>	Not assigned	Species-specific value	0.33749648
<i>Ciliata mustela</i>	Not assigned	Species-specific value	0.21114201
<i>Ciliata septentrionalis</i>	Not assigned	Value calculated for <i>Ciliata mustela</i>	0.21114201
<i>Clupea harengus</i>	Zooplankton Feeder	Species-specific value	0.04560401
<i>Coelorinchus caelorhincus</i>	Not assigned	Value calculated for species included in GRP6: "Pelagic "	0.04560401
<i>Conger conger</i>	Demersal Piscivore	Species-specific value	0.21114201
<i>Dalatias licha</i>	Benthos Feeder	Value calculated for species included in GRP4: " Predominantly close to the seabed, but not on it"	0.33749648
<i>Dasyatis pastinaca</i>	Not assigned	Value calculated for species included in GRP3: 'Predominantly on the seabed—flat "	0.33623829
<i>Deania calcea</i>	Not assigned	Value calculated for species included in GRP4: " Predominantly close to the seabed, but not on it"	0.33749648
<i>Deania profundorum</i>	Not assigned	Value calculated for species included in GRP4: " Predominantly close to the seabed, but not on it"	0.33749648
<i>Dicentrarchus labrax</i>	Demersal Piscivore	Species-specific value	0.28045171
<i>Dicologlossa cuneata</i>	Flatfish	Value calculated for species included in GRP3: 'Predominantly on the seabed—flat "	0.33623829
<i>Echiichthys vipera</i>	Not assigned	Species-specific value	0.15455351
<i>Enchelyopus cimbrius</i>	Not assigned	Species-specific value	0.04704845
<i>Engraulis encrasicolus</i>	Zooplankton Feeder	Species-specific value	0.19991184
<i>Etmopterus spinax</i>	Not assigned	Species-specific value	0.28045171
<i>Eutrigla gurnardus</i>	Benthos Feeder	Species-specific value	0.64928232
<i>Gadiculus argenteus</i>	Not assigned	Species-specific value	0.29609547
<i>Gadus morhua</i>	Demersal Piscivore	Species-specific value	0.34113049
<i>Gaidropsarus sp.</i>	Not assigned	Value calculated for species included in GRP7: Predominantly on the seabed—lumpiform	0.37836711
<i>Galeorhinus galeus</i>	Demersal Piscivore	Species-specific value	0.28045171
<i>Galeus melastomus</i>	Benthos Feeder	Species-specific value	0.37836711
<i>Glyptocephalus cynoglossus</i>	Benthos Feeder	Species-specific value	0.05025533
Gobiidae	Not assigned	Value calculated for species included in GRP7: Predominantly on the seabed—lumpiform	0.37836711
<i>Gobius niger</i>	Benthos Feeder	Species-specific value	0.00028403
<i>Helicolenus dactylopterus</i>	Benthos Feeder	Species-specific value	0.62220916
<i>Hexanchus griseus</i>	Not assigned	Species-specific value	0.33623829
<i>Hippoglossoides sp.</i>	Not assigned	Value calculated for <i>Hippoglossoides hippoglossoides</i>	0.37253136

Species	Functional group	Rationale	Efficiency
<i>Hoplostethus mediterraneus mediterraneus</i>	Zooplankton- Feeder	Value calculated for species included in GRP6:"Pelagic "	0.04560401
<i>Lampanyctus crocodilus</i>	Flatfish	Value calculated for species included in GRP3: 'Predominantly on the seabed—flat "	0.33623829
<i>Lepidorhombus boscii</i>	Flatfish	Species-specific value	0.33623829
<i>Lepidorhombus whiffiagonis</i>	Flatfish	Species-specific value	0.39558415
<i>Lepidotrigla dieuzeidei</i>	Not assigned	Value calculated for species included in GRP7: Predominantly on the seabed—lumpiform	0.37836711
<i>Lesueurigobius friesii</i>	Not assigned	Value calculated for species included in GRP6:"Pelagic "	0.04560401
<i>Leucoraja circularis</i>	Benthos Feeder	Species-specific value	0.33623829
<i>Leucoraja naevus</i>	Benthos Feeder	Species-specific value	0.33623829
<i>Limanda limanda</i>	Flatfish	Species-specific value	0.32594567
<i>Lithognathus mormyrus</i>	Benthos Feeder	Value calculated for species included in GRP4: " Predominantly close to the seabed, but not on it"	0.33749648
<i>Liza ramada</i>	Benthos Feeder	Value calculated for <i>Liza aurata</i>	0.28045171
<i>Lophius budegassa</i>	Demersal Piscivore	Species-specific value	0.55126847
<i>Lophius piscatorius</i>	Demersal Piscivore	Species-specific value	0.08659407
<i>Macroramphosus scolopax</i>	Not assigned	Value calculated for species included in GRP6:"Pelagic "	0.04560401
<i>Malacocephalus laevis</i>	Not assigned	Value calculated for species included in GRP4: " Predominantly close to the seabed, but not on it"	0.33749648
<i>Maurolicus muelleri</i>	Not assigned	Species-specific value	0.04560401
<i>Melanogrammus aeglefinus</i>	Demersal Piscivore	Species-specific value	0.30905016
<i>Merlangius merlangus</i>	Demersal Piscivore	Species-specific value	0.39609914
<i>Merluccius merluccius</i>	Demersal Piscivore	Species-specific value	0.36769808
<i>Microchirus variegatus</i>	Flatfish	Value calculated for species included in GRP3: 'Predominantly on the seabed—flat "	0.33623829
<i>Micromesistius poutassou</i>	Zooplankton Feeder	Species-specific value	0.47813922
<i>Microstomus kitt</i>	Flatfish	Species-specific value	0.25128538
<i>Molva macrophthalma</i>	Not assigned	Value calculated for species included in GRP4: " Predominantly close to the seabed, but not on it"	0.33749648
<i>Molva molva</i>	Not assigned	Species-specific value	0.14892994
<i>Mullus surmuletus</i>	Benthos Feeder	Species-specific value	0.12490086
<i>Mustelus sp.</i>	Benthos Feeder	Value calculated for <i>Mustelus mustelus</i>	0.33749648
<i>Myctophidae</i>	Not assigned	Value calculated for species included in GRP6:"Pelagic "	0.04560401
<i>Myctophum punctatum</i>	Not assigned	Value calculated for species included in GRP6:"Pelagic "	0.04560401
<i>Myliobatis aquila</i>	Not assigned	Value calculated for species included in GRP5:"Midwater species with some seabed association "	0.28045171

Species	Functional group	Rationale	Efficiency
<i>Pagellus acarne</i>	Benthos Feeder	Value calculated for species included in GRP4: " Predominantly close to the seabed, but not on it"	0.33749648
<i>Pagellus bogaraveo</i>	Benthos Feeder	Value calculated for species included in GRP4: " Predominantly close to the seabed, but not on it"	0.33749648
<i>Pagellus erythrinus</i>	Benthos Feeder	Value calculated for species included in GRP4: " Predominantly close to the seabed, but not on it"	0.33749648
<i>Pegusa lascaris</i>	Flatfish	Species-specific value	0.0218695
<i>Phrynorhombus norvegicus</i>	Not assigned	Species-specific value	0.33623829
<i>Phycis blennoides</i>	Demersal Piscivore	Species-specific value	0.2367031
<i>Platichthys flesus</i>	Flatfish	Species-specific value	0.21561821
<i>Pleuronectes platessa</i>	Flatfish	refined value - see specific comment below	1
<i>Pollachius pollachius</i>	Demersal Piscivore	Species-specific value	0.03431152
<i>Polymetme thaeocoryla</i>	Not assigned	Value calculated for species included in GRP6:"Pelagic "	0.04560401
<i>Pomatoschistus</i> sp.	Not assigned	Value calculated for species included in GRP7: Predominantly on the seabed—lumpiform	0.37836711
<i>Raja clavata</i>	Benthos Feeder	Species-specific value	0.49249411
<i>Raja montagui</i>	Benthos Feeder	Species-specific value	0.86564489
<i>Raja undulata</i>	Benthos Feeder	Species-specific value	0.33623829
<i>Sarda sarda</i>	Pelagic Piscivore	Value calculated for species included in GRP6:"Pelagic "	0.04560401
<i>Sardina pilchardus</i>	Zooplankton Feeder	Value calculated for species included in GRP6:"Pelagic "	0.04560401
<i>Scomber colias</i>	Pelagic Piscivore	Value calculated for <i>Scomber scombrus</i>	0.24028353
<i>Scomber scombrus</i>	Pelagic Piscivore	Species-specific value	0.24028353
<i>Scophthalmus maximus</i>	Flatfish	Species-specific value	0.1560674
<i>Scorpaena loppei</i>	Benthos Feeder	Value calculated for species included in GRP4: " Predominantly close to the seabed, but not on it"	0.33749648
<i>Scorpaena scrofa</i>	Demersal Piscivore	Value calculated for species included in GRP4: " Predominantly close to the seabed, but not on it"	0.33749648
<i>Scyliorhinus canicula</i>	Benthos Feeder	Species-specific value	0.65295088
<i>Scyliorhinus stellaris</i>	Benthos Feeder	Species-specific value	0.37836711
<i>Scymnodon ringens</i>	Benthos Feeder	Value calculated for species included in GRP4: " Predominantly close to the seabed, but not on it"	0.33749648
<i>Solea senegalensis</i>	Flatfish	Value calculated for species included in GRP3: 'Predominantly on the seabed—flat "	0.33623829
<i>Solea solea</i>	Flatfish	Species-specific value	0.02079725
<i>Sparus aurata</i>	Pelagic Piscivore	Value calculated for species included in GRP5:"Midwater species with some seabed association "	0.28045171
<i>SpondylIOSoma cantharus</i>	Benthos Feeder	Species-specific value	0.33749648

Species	Functional group	Rationale	Efficiency
<i>Sprattus sprattus</i>	Zooplankton Feeder	Species-specific value	0.04560401
<i>Squalus acanthias</i>	Benthos Feeder	Species-specific value	0.35131515
<i>Syngnathus</i> spp.	Not assigned	Value calculated for species included in GRP2: On or near the seabed—anguilliform or fusiform	0.21114201
<i>Taurulus bubalis</i>	Not assigned	Species-specific value	0.02851265
<i>Torpedo marmorata</i>	Not assigned	Value calculated for species included in GRP3: 'Predominantly on the seabed—flat "	0.33623829
<i>Trachinus draco</i>	Benthos Feeder	Value calculated for species included in GRP4: " Predominantly close to the seabed, but not on it"	0.33749648
<i>Trachurus trachurus</i>	Pelagic Piscivore	Species-specific value	0.22761218
<i>Trigla lyra</i>	Benthos Feeder	Value calculated for species included in GRP4: " Predominantly close to the seabed, but not on it"	0.33749648
<i>Trigloporus lastoviza</i>	Benthos Feeder	Value calculated for species included in GRP4: " Predominantly close to the seabed, but not on it"	0.33749648
<i>Trisopterus luscus</i>	Benthos Feeder	Value calculated for species included in GRP4: " Predominantly close to the seabed, but not on it"	0.33749648
<i>Trisopterus minutus</i>	Benthos Feeder	Value calculated for species included in GRP4: " Predominantly close to the seabed, but not on it"	0.33749648
<i>Umbrina canariensis</i>	Not assigned	Value calculated for species included in GRP5:"Midwater species with some seabed association "	0.28045171
<i>Umbrina cirrosa</i>	Not assigned	Value calculated for species included in GRP5:"Midwater species with some seabed association "	0.28045171
<i>Xenodermichthys copei</i>	Not assigned	Value calculated for species included in GRP6:"Pelagic "	0.04560401
<i>Zeugopterus</i> sp.	Flatfish	Value calculated for species included in GRP3: 'Predominantly on the seabed—flat "	0.33623829
<i>Zeus faber</i>	Benthos Feeder	Species-specific value	0.35833994

Notes about this table:

For plaice (*P. platessa*), the application of the very low catchability factor (0.045) proposed by Walker et al. (2017) led to a total biomass of ~290 000 tons. This value was much higher than values reported in ecosystem models calibrated for the Eastern English Channel (Girardin et al., 2018; Travers-Trolet et al., 2019) that reported biomass of ~10 000 t. We therefore chose not to use a correction factor for this species. Resulting biomass was ~10 000 t, i.e. in the same order of magnitude as values included in the models (9 000 t).

Girardin, R., Fulton, E.A., Lehuta, S., Rolland, M., Thébaud, O., Travers-Trolet, M., Vermard, Y., Marchal, P., 2018. Identification of the main processes underlying ecosystem functioning in the Eastern English Channel, with a focus on flatfish species, as revealed through the application of the Atlantis end-to-end model. *Est, Coast Shelf Sci* 201, 208–222. doi:10.1016/j.ecss.2016.10.016

Travers-Trolet, M., Coppin, F., Cresson, P., Cugier, P., Oliveros-Ramos, R., Verley, P., 2019. Emergence of negative trophic level-size relationships from a size-based, individual-based multispecies fish model. *Ecol Model* 410, 108800. doi:10.1016/j.ecolmodel.2019.108800

Walker, N.D., Maxwell, D.L., Le Quesne, W.J., Jennings, S., 2017. Estimating efficiency of survey and commercial trawl gear from comparisons of catch-ratios. ICES J. Mar. Sci. 74, 1448–1457. doi:10.1093/icesjms/fsw250

Journal Pre-proofs

Table S2: Biometric, isotopic and biomass data. Species are sorted by increasing trophic level. NA values are for individuals that were dissected on board and that were not measured. BF: Benthos-feeding. Pisciv: Piscivore. Zoopk: Zooplankton

Species	Trophic group	n indiv	Total length, mm mean \pm sd, (Min-max)	$\delta^{13}\text{C}$ ‰ (mean \pm sd)	$\delta^{15}\text{N}$ ‰ (mean \pm sd)	Trophic level mode [95 % credibility interval]	Pelagic contribution mode [95 % credibility interval]	Actual (kt) and relative (%) biomass
Eastern English Channel		264		-17.21 \pm 0.78	14.67 \pm 1.40	3.85 [3.66 - 4.05]	0.46 [0.28 - 0.68]	337.22 kt / 82.8%
<i>Clupea harengus</i>	Zoopk-feeder	11	253 \pm 21 (214-285)	-18.55 \pm 0.34	12.44 \pm 0.46	3.07 [2.82 - 3.27]	0.64 [0.47 - 0.89]	42.47 kt / 10.4%
<i>Engraulis encrasicolus</i>	Zoopk-feeder	12	118 \pm 14 (100-149)	-18.18 \pm 0.39	14.11 \pm 0.75	3.54 [3.27 - 3.78]	0.67 [0.48 - 0.91]	2.02 kt / 0.5%
<i>Pleuronectes platessa</i>	Flatfish	42	281 \pm 39 (206-384)	-17.08 \pm 0.84	13.55 \pm 0.94	3.62 [3.40 - 3.81]	0.34 [0.17 - 0.56]	10.81 kt / 2.7%
<i>Trisopterus minutus</i>	BF fish	24	130 \pm 35 (85-200)	-17.67 \pm 0.38	14.04 \pm 0.48	3.63 [3.39 - 3.83]	0.53 [0.37 - 0.81]	5.19 kt / 1.3%
<i>Sprattus sprattus</i>	Zoopk-feeder	10	112 \pm 6 (106-121)	-17.78 \pm 0.65	14.23 \pm 0.90	3.64 [3.33 - 3.91]	0.57 [0.35 - 0.87]	106.27 kt / 26.1%
<i>Scomber scombrus</i>	Pelagic Pisciv	24	325 \pm 33 (281-387)	-17.86 \pm 0.64	14.69 \pm 1.19	3.74 [3.46 - 3.98]	0.63 [0.44 - 0.89]	4.62 kt / 1.1%
<i>Chelidonichthys cuculus</i>	BF fish	3	255 \pm 26 (235-285)	-16.95 \pm 0.25	14.07 \pm 0.51	3.78 [3.03 - 4.51]	0.36 [0.06 - 0.79]	3.93 kt / 1.0%
<i>Trachurus trachurus</i>	Pelagic Pisciv	7	120 \pm 12 (101-134)	-18.23 \pm 0.44	15.34 \pm 0.30	3.81 [3.57 - 4.10]	0.79 [0.59 - 1.00]	2.42 kt / 0.6 %
<i>Limanda limanda</i>	Flatfish	13	230 \pm 31 (191-278)	-16.63 \pm 0.43	14.14 \pm 0.97	3.83 [3.61 - 4.07]	0.27 [0.11 - 0.49]	15.65 kt/ 3.8 %
<i>Mullus surmuletus</i>	BF fish	10	217 \pm 20 (196-250)	-17.19 \pm 0.53	15.15 \pm 0.43	3.98 [3.73 - 4.23]	0.50 [0.30 - 0.78]	4.20 kt / 1.0%
<i>Eutrigla gurnardus</i>	BF fish	19	231 \pm 49 (168-355)	-16.67 \pm 0.49	14.85 \pm 1.09	3.99 [3.76 - 4.24]	0.34 [0.15 - 0.58]	0.16 kt / 0.0%
<i>Gadus morhua</i>	Demersal Pisciv	20	493 \pm 162 (286-930)	-16.77 \pm 0.55	15.17 \pm 0.97	4.05 [3.81 - 4.29]	0.40 [0.20 - 0.63]	14.30 kt / 3.5 %
<i>Pollachius pollachius</i>	Demersal Pisciv	4	NA	-16.88 \pm 0.19	16.60 \pm 0.33	4.38 [4.02 - 4.70]	0.51 [0.29 - 0.84]	9.60 kt / 2.4%
<i>Merlangius merlangus</i>	Demersal Pisciv	44	301 \pm 35 (205-382)	-16.78 \pm 0.35	16.52 \pm 0.58	4.38 [4.13 - 4.62]	0.49 [0.28 - 0.76]	78.80 kt / 19.3%
<i>Scyliorhinus canicula</i>	BF fish	18	523 \pm 58 (389-634)	-16.51 \pm 0.34	13.81 \pm 0.68	4.41 [4.10 - 4.74]	0.43 [0.25 - 0.66]	35.57 kt / 8.7%
<i>Dicentrarchus labrax</i>	Demersal Pisciv	3	426 \pm 12 (417-434)	-16.87 \pm 0.05	17.77 \pm 1.30	4.62 [3.51 - 5.59]	0.57 [0.28 - 1.00]	1.20 kt / 0.3%

Species	Trophic group	n indiv	Total length, mm mean \pm sd, (Min-max)	$\delta^{13}\text{C}$ ‰ (mean \pm sd)	$\delta^{15}\text{N}$ ‰ (mean \pm sd)	Trophic level mode [95 % credibility interval]	Pelagic contribution mode [95 % credibility interval]	Actual (kt) and relative (%) biomass
Bay of Biscay		257		-18.45 \pm 0.98	11.90 \pm 1.14	3.53 [3.23-3.82]	0.85 [0.77-0.95]	1879.16 kt / 67.6%
<i>Engraulis encrasicolus</i>	Zoopk-feeder	12	127 \pm 16 (106-153)	-18.46 \pm 0.60	10.69 \pm 0.75	3.11 [2.79-3.51]	0.78 [0.67-0.91]	372.92 kt / 13.4%
<i>Micromesistius poutassou</i>	Zoopk-feeder	47	165 \pm 11 (150-180)	-19.48 \pm 0.37	10.72 \pm 0.73	3.24 [2.90-3.50]	0.96 [0.89-1.00]	0.01 kt / 0.0%
<i>Trachurus trachurus</i>	Pelagic Pisciv	20	143 \pm 44 (85-250)	-19.54 \pm 0.72	12.58 \pm 1.47	3.43 [2.91-3.85]	0.92 [0.74-0.99]	98.17 kt / 3.5 %
<i>Sprattus sprattus</i>	Zoopk-feeder	5	NA	-19.20 \pm 0.45	11.93 \pm 0.76	3.49 [3.00-3.85]	0.94 [0.79-0.99]	91.25 kt / 3.3 %
<i>Sardina pilchardus</i>	Zoopk-feeder	12	111 \pm 15 (90-143)	-18.29 \pm 1.05	11.99 \pm 1.29	3.52 [3.13-3.94]	0.82 [0.66-0.96]	416.52 kt / 15.0 %
<i>Scomber scombrus</i>	Pelagic Pisciv	16	251 \pm 58 (172-317)	-18.68 \pm 0.56	11.79 \pm 1.07	3.55 [3.18-3.90]	0.80 [0.91-0.99]	643.51 kt / 23.1%
<i>Merluccius merluccius</i>	Demersal Pisciv	35	252 \pm 60 (102-360)	-18.94 \pm 0.42	12.40 \pm 0.72	3.59 [3.25-3.86]	0.80 [0.91-0.99]	89.4 kt / 3.2 %
<i>Leucoraja naevus</i>	BF fish	32	474 \pm 120 (260-660)	-17.55 \pm 0.39	11.59 \pm 0.65	4.03 [3.58-4.62]	0.78 [0.65-0.94]	35.11 kt / 1.3%
<i>Trisopterus luscus</i>	BF fish	12	211 \pm 31 (152-256)	-17.17 \pm 0.67	14.18 \pm 0.66	4.08 [3.76-4.47]	0.72 [0.59-0.96]	90.78 kt / 3.3%
<i>Mustelus asterias</i>	BF Fish	9	785 \pm 90 (640-940)	-16.75 \pm 0.76	12.64 \pm 0.54	4.38 [3.86-5.03]	0.70 [0.51-0.91]	24.27 kt / 0.9%
<i>Scyliorhinus canicula</i>	BF fish	57	381 \pm 90 (255-600)	-17.86 \pm 0.42	12.16 \pm 0.46	4.40 [3.83-4.85]	0.89 [0.76-0.98]	16.90 kt / 0.6%
Gulf of Lions		150		-18.92 \pm 0.69	8.84 \pm 0.89	3.55 [3.40 - 3.70]	0.85 [0.76 - 1.00]	128.35 kt / 76.6%
<i>Engraulis encrasicolus</i>	Zoopk feeder	18	110 \pm 13 (80-136)	-19.30 \pm 0.35	7.81 \pm 0.67	3.26 [3.09 - 3.43]	0.86 [0.62 - 1.00]	43.21 kt / 33.7 %
<i>Sardina pilchardus</i>	Zoopk feeder	19	125 \pm 15 (104-147)	-19.77 \pm 0.31	7.98 \pm 0.30	3.31 [3.05 - 3.51]	0.99 [0.65 - 1.00]	64.69 kt / 50.4 %
<i>Merluccius merluccius</i>	Demersal pisciv	36	220 \pm 67 (119-317)	-19.12 \pm 0.62	8.94 \pm 1.02	3.60 [3.40 - 3.78]	0.95 [0.64 - 1]	0.33 kt / 0.3 %
<i>Micromesistius poutassou</i>	Zoopk feeder	11	243 \pm 16 (220-267)	-19.02 \pm 0.17	9.01 \pm 0.41	3.61 [3.44 - 3.77]	0.92 [0.64 - 1]	1.36 kt / 1.3 %
<i>Scomber scombrus</i>	Pelagic pisciv	10	198 \pm 37 (127-234)	-19.01 \pm 0.22	9.66 \pm 0.40	3.80 [3.58 - 4.01]	0.96 [0.64 - 1]	16.27 kt / 12.7%

Species	Trophic group	n indiv	Total length, mm mean ± sd, (Min-max)	$\delta^{13}\text{C}$ ‰ (mean ± sd)	$\delta^{15}\text{N}$ ‰ (mean ± sd)	Trophic level mode [95 % credibility interval]	Pelagic contribution mode [95 % credibility interval]	Actual (kt) and relative (%) biomass
<i>Trachurus trachurus</i>	Pelagic pisciv	9	115 ± 9 (103-127)	-19.27 ± 0.20	9.84 ± 0.39	3.85 [3.57 - 4.06]	0.99 [0.61 - 1]	1.66 kt / 1.3 %
<i>Scyliorhinus canicula</i>	BF fish	47	363 ± 86 (210-526)	-18.17 ± 0.41	9.09 ± 0.56	4.39 [4.10 - 4.67]	0.90 [0.51 - 1]	0.56 kt / 0.4 %

Journal Pre-proof

Table S3: Results of the statistical tests for shared species.

Species	Isotope	Factor	df	F	p-value
<i>Scomber scombrus</i>	$\delta^{13}\text{C}$	Environment	43,2	3.59	0.04
		Size	43,1	12.73	8.99 10⁻⁴
		Environment \times Size	43,2	0.86	0.33
	$\delta^{15}\text{N}$	Environment	43,2	25.91	4.14 10⁻⁸
		Size	43,1	1.75	0.19
		Environment \times Size	43,2	0.63	0.53
	Energetic density	Environment	48,2	6.85	0.002
		Size	48,1	35.15	3.22 10⁻⁶
		Environment \times Size	48,2	7.44	0.002
<i>Trachurus trachurus</i>	$\delta^{13}\text{C}$	Environment	30,2	18.12	6.94 10⁻⁶
		Size	30,1	6.85	0.01
		Environment \times Size	30,2	1.05	0.36
	$\delta^{15}\text{N}$	Environment	30,2	45.72	7.79 10⁻¹⁰
		Size	30,1	2.70	0.11
		Environment \times Size	30,2	0.34	0.71
	Energetic density	Environment	46,2	29.82	4.96 10⁻⁹
		Size	46,1	33.21	6.56 10⁻⁷
		Environment \times Size	46,2	3.93	0.03
<i>Engraulis encrasicolus</i>	$\delta^{13}\text{C}$	Environment	34,2	32.34	1.35 10⁻⁸
		Size	34,1	0.03	0.87
		Environment \times Size	34,2	10.14	3.5 10⁻⁴
	$\delta^{15}\text{N}$	Environment	34,2	399.81	<2.2 10⁻¹⁶
		Size	34,1	5.72	0.02
		Environment \times Size	34,2	9.97	3.91 10⁻⁴
	Energetic density	Environment	43,2	16.58	4.59 10 ⁻⁶
		Size	43,1	27.94	3.95 10 ⁻⁶
		Environment \times Size	43,2	1.12	0.33
<i>Sprattus sprattus</i>	Energetic density	Environment	44,2	9.74	3.15 10⁻⁴
		Size	44,1	3.66	0.06
		Environment \times Size	44,2	3.37	0.04

Species	Isotope	Factor	df	F	p-value
<i>Scyliorhinus canicula</i>	$\delta^{13}\text{C}$	Environment	85,2	58.07	<2.2 10⁻¹⁶
		Size	85,1	20.87	1.65 10⁻⁵
		Environment × Size	85,2	1.13	0.33
	$\delta^{15}\text{N}$	Environment	85,2	504.66	<2.2 10⁻¹⁶
		Size	85,1	33.15	1.32 10⁻⁷
		Environment × Size	85,2	2.99	0.06

Table S4: Comparison of fluxes (in $t\ km^{-2}\ a^{-1}$) between trophic levels and towards detrital pathways in Ecopath models developed in the Bay of Biscay (Lassalle et al., 2011), in the continental shelf of the Gulf of Lions (Bănaru et al., 2013), and in the deep (1000-1400m) Mediterranean (Tecchio et al., 2013).

	TL1 → TL2	TL2 → TL3	TL3 → TL4	TL4 → TL5	Detritus	
Bay of Biscay ^a	6396.08	1209.94	186.35	29.62	4012.56	
Gulf of Lions, continental shelf	872.30	276.00	56.36	8.06	764.00	
Gulf of Lions, deep	34.98	8.92	4.65	0.19 ^b	19.34	
						Average
Ratios						
GoL shelf/Bay of Biscay	0.14	0.23	0.30	0.27	0.19	0.23
GoL, abyssal/shelf	0.04	0.03	0.08	0.02	0.03	0.04

a: fluxes were originally expressed in $kg\ C\ km^{-2}\ a^{-1}$ in the paper, and were converted in the appropriate unit by applying conversion coefficients of 0.14 and 0.45 (G. Lassalle pers. comm.)

b: fluxes at trophic levels above 4 (0.176 and 0.0123 for TL5 and TL6 respectively) were summed

Bănaru D, Mellon-Duval C, Roos D, Bigot J-L, Souplet A, Jadaud A, Beaubrun P, Fromentin J-M., 2013. Trophic structure in the Gulf of Lions marine ecosystem (north-western Mediterranean Sea) and fishing impacts. *Journal of Marine Systems* 111, 45–68. doi:/10.1016/j.jmarsys.2012.09.010

Lassalle G, Lobry J, Le Loc'h F, Bustamante P, Certain G, Delmas D, Dupuy C, Hily C, Labry C, Le Pape O, Marquis E, Petitgas P, Pusineri C, Ridoux V, Spitz J, Niquil N., 2011. Lower trophic levels and detrital biomass control the Bay of Biscay continental shelf food web: Implications for ecosystem management. *Progress in Oceanography* 91, 561–575. doi:10.1016/j.pocean.2011.09.002

Tecchio S, Coll M, Christensen V, Company JB, Ramirez-Llodra E, Sarda F., 2013. Food web structure and vulnerability of a deep-sea ecosystem in the NW Mediterranean Sea. *Deep Sea Research Part I: Oceanographic Research Papers* 75, 1–15. doi:10.1016/j.dsr.2013.01.003

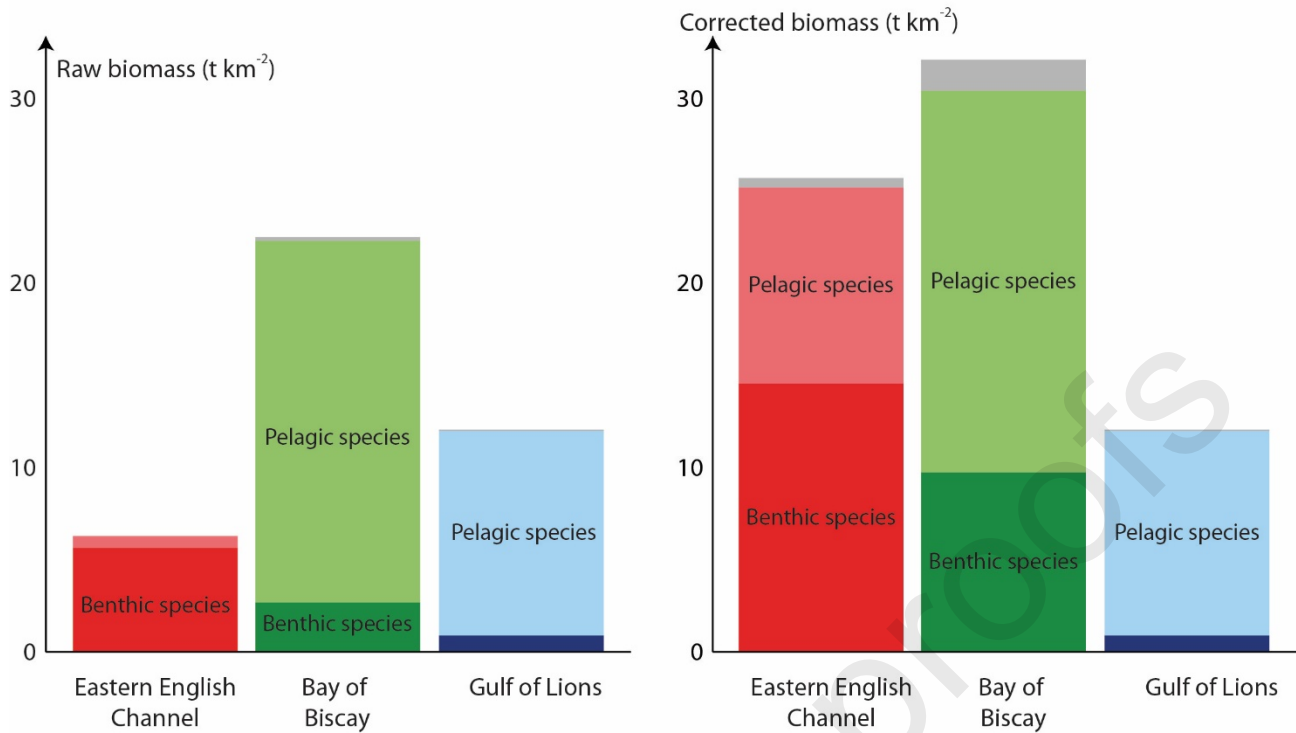


Fig. S1: Comparison of communities' composition, considering all species, whether sampled for isotopic analyses or not, and based on raw (left plot) or corrected biomasses (right plot). Grey color represent species not included in a trophic group

Highlights

Fish assemblage trophic structure was compared between French marine ecosystems

2 pelagic dominated ecosystems 1 with similar benthic/pelagic contributions

Benthic-demersal species' biomass was higher when both sources contribute

Differences in the nature and intensity of fluxes drive changes in assemblage composition

Journal Pre-proofs

Declaration of interests

The authors declare that they have no known competing financial interests or personal relationships that could have appeared to influence the work reported in this paper.

The authors declare the following financial interests/personal relationships which may be considered as potential competing interests:

Journal Pre-proofs

Graphical abstract

