



## Spatio-temporal missing data reconstruction in satellite displacement measurement time series

Alexandre Hippert-Ferrer<sup>1†</sup>, Yajing Yan<sup>1</sup>, Philippe Bolon<sup>1</sup>, Romain Millan<sup>2</sup>

<sup>1</sup>Laboratoire d'Informatique, Systèmes, Traitement de l'Information et la Connaissance (LISTIC), Annecy, France

<sup>2</sup>Institut des Géosciences de l'Environnement (IGE), Université Grenoble Alpes, CNRS, Grenoble, France

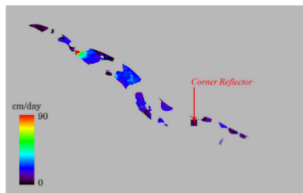
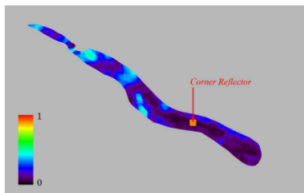
† Correspondence to: alexandre.hippert-ferrer@univ-smb.fr

Thursday, May 7

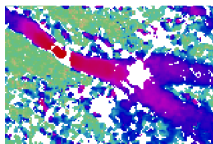


# Introduction

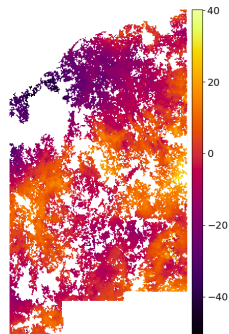
- **Missing data** is a frequent issue in displacement time series in both **space and time**.
- It can prevent the full understanding of the **physical phenomena** under observation.
- **Causes** : rapid surface changes, missing image, technical limitations.



Argentière glacier, offset tracking of TerraSAR-X in Summer 2010 (Fallourd et al., 2011)



Surface velocity over Fox Glacier, offset tracking of Sentinel-2 images in February 2018 (Millan et al., 2019)



Slow slip event (interferometry), Mexico (Maubant et al., 2020)



# Motivation of the study

## Handling missing data in displacement time series

- Classical approach : **spatial or temporal interpolation**
- Not exploited (yet) : **spatio-temporal information**

→ **Manage spatio-temporal missing data in time series** ←

## Objective : propose a statistical gap-filling method addressing

1. **Randomness** and possible **spatial, temporal and spatio-temporal correlation** of
  - Noise
  - Missing data
2. **Complex** displacement behaviors (mixed frequencies)
3. **Small** time series



# Extended EM-EOF

→ Extension of the EM-EOF method (Hippert et al., 2019, 2020) [3, 4]

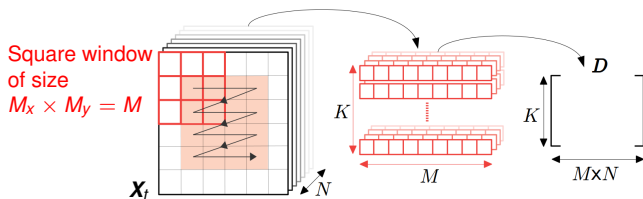
## Key features of the extended EM-EOF method :

- Low rank structure of the **sample spatio-temporal covariance** matrix.
- Displacement signal and noise decomposed in **empirical orthogonal functions** (EOFs).
- Reconstruction with an **appropriate initialization** of missing values.
- Expectation-Maximization (**EM**)-**type algorithm** for resolution.



# Data representation

- Let  $\mathbf{X}_t = \{X_{ij}(t)\}_{1 \leq i \leq P_x, 1 \leq j \leq P_y}$  be a spatial grid observed at time  $t = 1, \dots, N$ .
- Some elements of  $\mathbf{X}_t$  are **missing**.
- All  $\mathbf{X}_t$  are stacked into a spatio-temporal data matrix  $\mathbf{Y} = (\mathbf{X}_1, \mathbf{X}_2, \dots, \mathbf{X}_N)$ .



- Each  $\mathbf{X}_t$  is **augmented** into a Hankel-block Hankel (HbH) matrix  $\mathbf{D}_t$  of size  $K \times M = K_x K_y \times M_x M_y$ , with  $K_x = (P_x - M_x + 1)$ ,  $K_y = (P_y - M_y + 1)$ .
- All  $\mathbf{D}_t$  is stacked into a **spatio-temporal** matrix  $\mathbf{D}$  of size  $(K \times NM)$ , that is  $\mathbf{D} = (\mathbf{D}_1, \mathbf{D}_2, \dots, \mathbf{D}_N)$ .



# Covariance estimation and decomposition

- Sample **spatio-temporal** covariance is estimated :

$$\hat{\mathbf{C}} = \frac{1}{K} \mathcal{D}^T \mathcal{D} \quad (1)$$

- The eigenvalue decomposition (EVD) of matrix  $\hat{\mathbf{C}}$  yields to :

$$\hat{\mathbf{C}} \stackrel{\text{EVD}}{=} \sum_{i=1}^{NM} \lambda_i \mathbf{u}_i \mathbf{u}_i^T \quad (2)$$

Vectors  $\mathbf{u}_i$  are the  $NM$  **EOFs modes** of matrix  $\mathcal{D}$ . **First modes** capture the main spatio-temporal dynamical behavior of the signal, others represent perturbations.

- Reconstruction** with an optimal number of EOF modes  $R \ll NM$  is obtained as

$$\hat{\mathcal{D}} = \mathbf{A}_R \mathbf{U}_R \quad (3)$$

$\mathbf{A}$  is the matrix of principal components, which are the projection of  $\mathcal{D}$  on each EOF  $\mathbf{u}$ .

How do we find  $R$ ?



# Selection of the optimal number of EOF modes

1. Root-mean-square error (cross-RMSE) on **cross-validated data**  $\mathcal{Y} \in \mathbf{Y}$  :

$$\frac{1}{MN} \|\hat{\mathcal{Y}}_k - \mathcal{Y}\|_2 \quad (4)$$

- Requires no a priori information

2. **Confidence index** associated with each eigenvalue of  $\mathcal{D}$  :

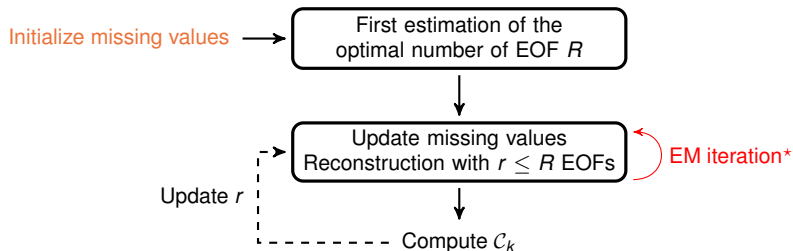
$$C_k = \frac{\max(\Gamma_k) - \Gamma_k}{\max(\Gamma_k) - \min(\Gamma_k)} \quad k = 1, \dots, NM \quad (5)$$

with  $\Gamma_k = \log \left( \frac{\Delta \lambda_k}{\lambda_j - \lambda_k} \right)$ .

- Investigation of **eigenvalue degeneracy**, which is linked to their uncertainties  $\frac{\Delta \lambda_k}{\lambda_j - \lambda_k}$ .
- **Over-estimation** of EOF modes is addressed by building metric  $C_k$ .



# General principle of the method



★ For a fixed number of EOF modes, cross-RMSE is computed until it converges.



# Determination of the spatial lag $M$ for spatio-temporal covariance construction

- Trade-off between the **amount of information** extracted in the window (large  $M$ ) and the **number of repetitions** of the window within each image (small  $M$ ).
- **Upper limit** based on covariance estimation theory :  $M < P/6$
- **Lower limit** :

We use the spatial decorrelation decay  $\tau$  defined as :

$$\tau = -\frac{\Delta P}{\log r} \quad (6)$$

$r$  : lag-one auto-correlation

$\Delta P$  : spatial sampling rate, here 1 pixel.

$M$  can be approximated by  $M \simeq P/\tau$  (Ghil et al., 2002) [1] which gives  $M > P/20$  with  $r < 0.95$ .

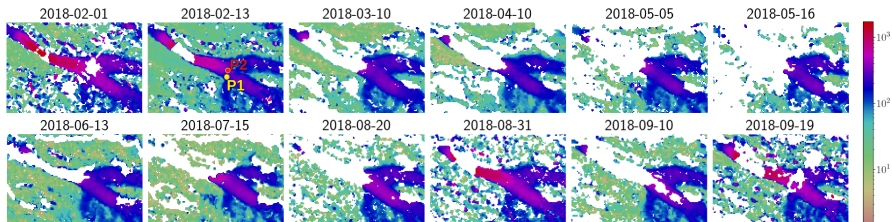


# Surface velocities on Fox Glacier, New Zealand

Period	Platform	Data type	Time series size	[min, max]% missing
02/2018-09/2018	Sentinel-2	Offset tracking	12	[10, 60]%

Time series description.

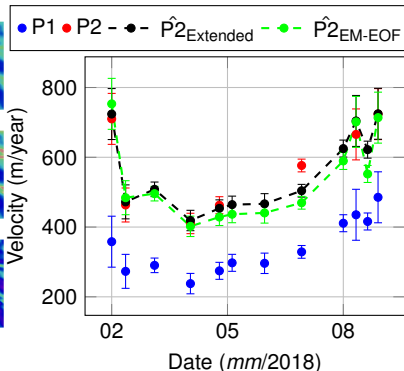
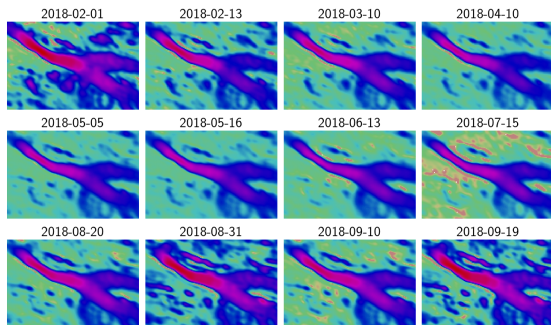
- Surface velocities computed from the study of (Millan et al., 2019) [5].



Surface velocities (m/year) on Fox Glacier. P1 and P2 locations are selected for temporal evolution analysis.



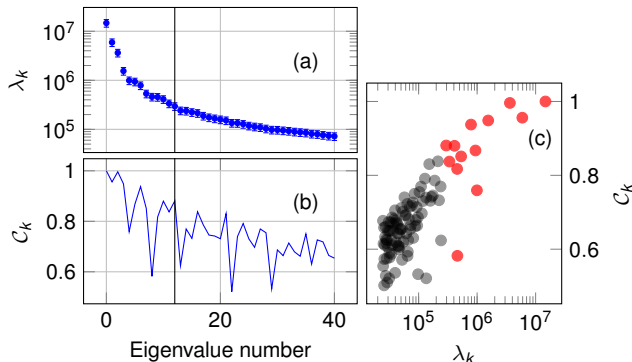
# Reconstruction results



- 13 EOFs modes ;  $M=225$  ; cross-validation data : 1% of observed values.
- Seasonal variation is retrieved, consistent values with the literature (4.5 m/day below the main ice fall in winter).
- Improved accuracy of  $\simeq 15\text{m/year}$  compared to the EM-EOF method.

# Selection of the optimal number of EOF modes

- Optimal number of EOF modes (13) corresponds to a **peak** in  $C_k$  which coincides with a break in the eigenvalue spectrum.
- **Eigenvalues multiplets** are kept in the reconstructed data.



$$C_k = \frac{\max(\Gamma_k) - \Gamma_k}{\max(\Gamma_k) - \min(\Gamma_k)}$$

$$\Gamma_k = \log\left(\frac{\Delta\lambda_k}{\lambda_j - \lambda_k}\right)$$



# Conclusion

- **Extension** of the EM-EOF method to impute spatio-temporal missing values.
  - Can handle small time series with high incompleteness
  - Extraction of the displacement signal from heterogeneous perturbations (noise)
- **Robust selection of the optimal number of EOF modes** based on :
  - Iterative computation of the cross-validation error
  - Confidence metric based on eigenvalue uncertainties to address potential over-estimation due to eigenvalue degeneracy
- A range of spatial lag  $M$  is provided
- Limitations : potential edge effect due to spatial square window.

**Perspective** : Use a shaped window (adaptive spatial lag) instead of a square window.



# Bibliography

**Thank you for your attention.**

- [1] M. Ghil, M. Allen, M. D. Dettinger, K. Ide, D. Kondrashov, M. Mann, A. Robertson, A. Saunders, Y. Tian, F. Varadi, and P. Yiou. Advanced spectral methods for climatic time series. **Review of Geophysics**, 40, 1 :1–41, 2002.
- [2] N. Golyandina and K. Usevich. 2d-extension of singular spectrum analysis : Algorithm and elements of theory. **Matrix Methods : Theory, Algorithms and Applications**, pages 449–473, 2010.
- [3] A. Hippert-Ferrer, Y. Yan, and P. Bolon. Gap-filling based on iterative EOF analysis of temporal covariance : application to InSAR displacement time series. In **IGARSS**, pages 262–265, 2019.
- [4] A. Hippert-Ferrer, Y. Yan, and P. Bolon. EM-EOF : gap-filling in incomplete SAR displacement time series. **IEEE Trans. Geosci. Remote Sens.**, in review, 2020.
- [5] R. Millan, J. Mougnot, A. Rabatel, S. Jeong, D. Cusicanqui, A. Derkacheva, and M. Chekki. Mapping surface flow velocity of glaciers at regional scale using a multiple sensors approach. **Remote Sensing**, 11(21), 2019.

This work has been supported by the Programme National de Télédétection Spatiale (PNTS, <http://www.insu.cnrs.fr/pnts>), grant PNTS-2019-11, and by the SIRGA project.



# Reconstruction averaging

Diagonal averaging, called *hankelization*, [2] is applied successively to each matrix  $\mathbf{H}_{i,t}$  and to each matrix  $\mathbf{D}_t$ , so that we have the following averaging :

$$x_{ik}(t) = \frac{1}{\#\mathcal{A}_k} \sum_{(l,l') \in \mathcal{A}_k} x_{ll'}(t) \quad (7)$$

$$\mathbf{H}_{k,t} = \frac{1}{\#\mathcal{B}_k} \sum_{(l,l') \in \mathcal{B}_k} \mathbf{H}_{ll',t} \quad (8)$$

with  $\mathcal{A}_k = \{(l, l') : 1 \leq l \leq K_y, 1 \leq l' \leq M_y, l + l' = k + 1\}$  and  $\mathcal{B}_k = \{(l, l') : 1 \leq l \leq K_x, 1 \leq l' \leq M_x, l + l' = k + 1\}$ .



## Confidence index and effective sample size

North's et al. "rule of thumb" (North, 1982) to approximate the eigenvalue uncertainty :

$$\Delta \lambda_k \approx \sqrt{\frac{2}{L^*}} \lambda_k \quad \Delta \mathbf{u}_k \approx \frac{\Delta \lambda_k}{\lambda_j - \lambda_k} \mathbf{u}_j \quad (9)$$

with  $L^* = N^* M^*$ .

- $N^* = N \left[ 1 + 2 \sum_{k=1}^{N-1} \left( 1 - \frac{k}{N} \right) \rho(k) \right]^{-1}$  is the temporal ESS (Thiébaux, 1984)
- $M^*$  is the spatial ESS within each spatial window of size  $M$ . We estimate it by :

$$M^* = M \left( 1 + 2 \sum_{k=1}^M \left( 1 - \frac{k}{M} \right) \nu(k) \right)^{-1} \quad (10)$$

Then  $\Gamma_k = \log \left( \frac{\Delta \lambda_k}{\lambda_j - \lambda_k} \right)$  and  $C_k$  is computed as :

$$C_k = \frac{\max(\Gamma_k) - \Gamma_k}{\max(\Gamma_k) - \min(\Gamma_k)} \quad k = 1, \dots, NM \quad (11)$$

