



SWift - A SignWriting editor to bridge between deaf world and e-learning

Claudia S. Bianchini, Fabrizio Borgia, Maria De Marsico



- **Deaf world**

Deaf and e-learning

SignWriting

SWift

Conclusions



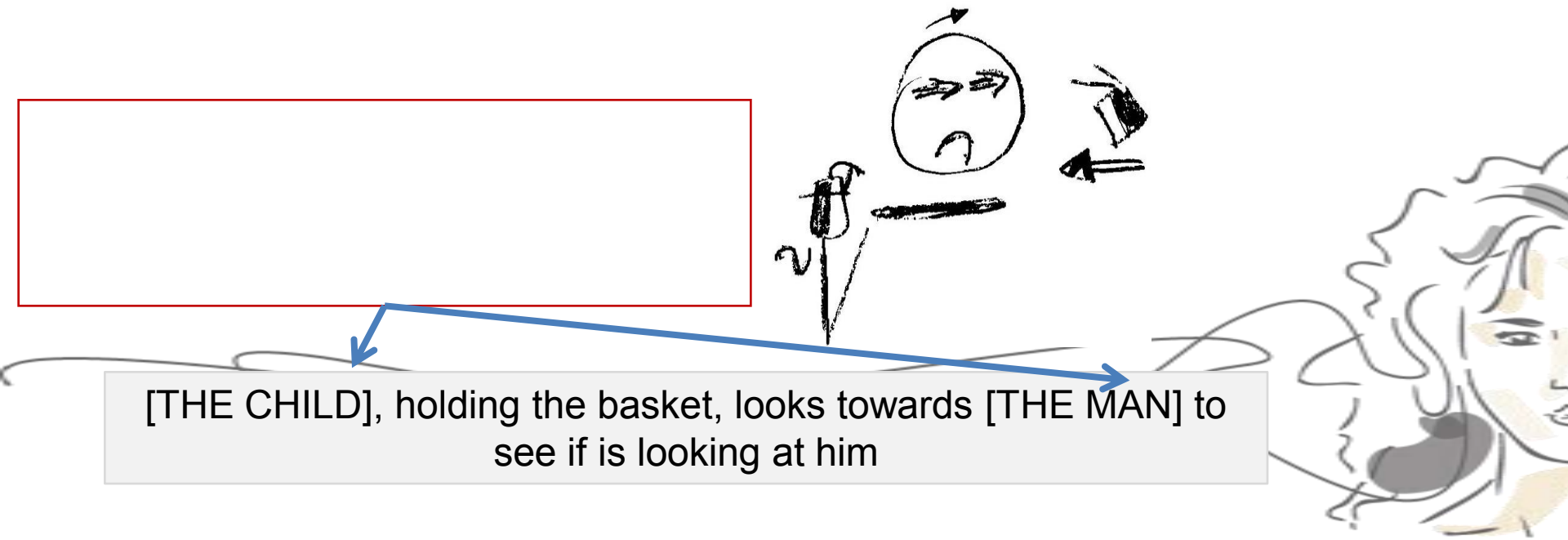
Deaf world



Deaf world

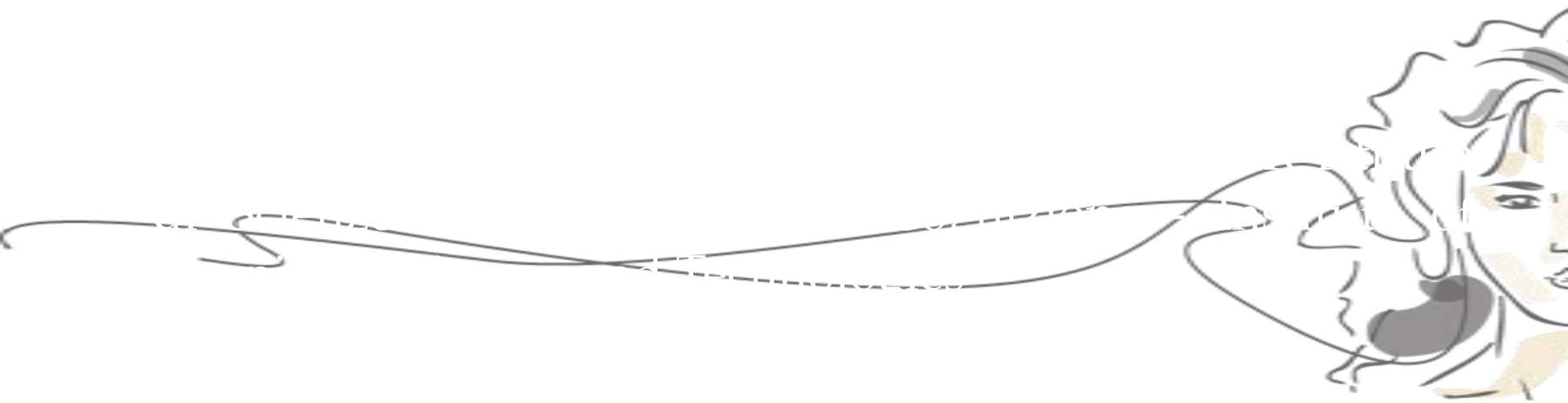


Highly Iconic Structures



[THE CHILD], holding the basket, looks towards [THE MAN] to see if is looking at him

A writing system for sign languages



Deaf World

- **Deaf and e-learning**

SignWriting

SWift

Conclusions



What to model?

**Modeling
Tools for
E-Learning**

10/05/2020



What to model?

**Applications
Modeling**

**Contents
Modeling**

10/05/2020



What to further model for accessibility?

Application Modeling Language Modeling Contents Modeling



What to model?

10/05/2020

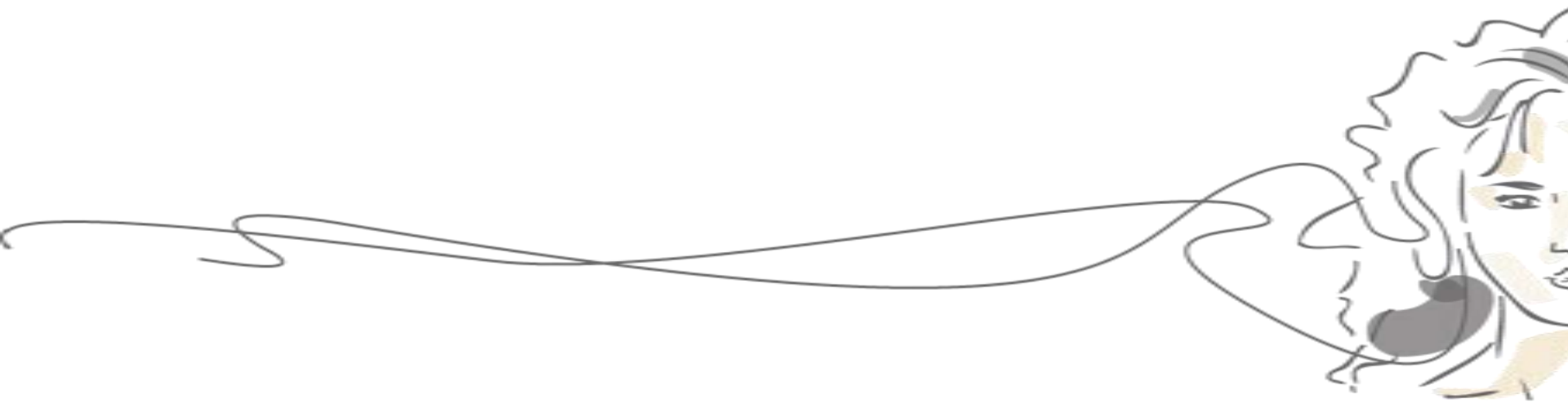


Possible modeling dimensions

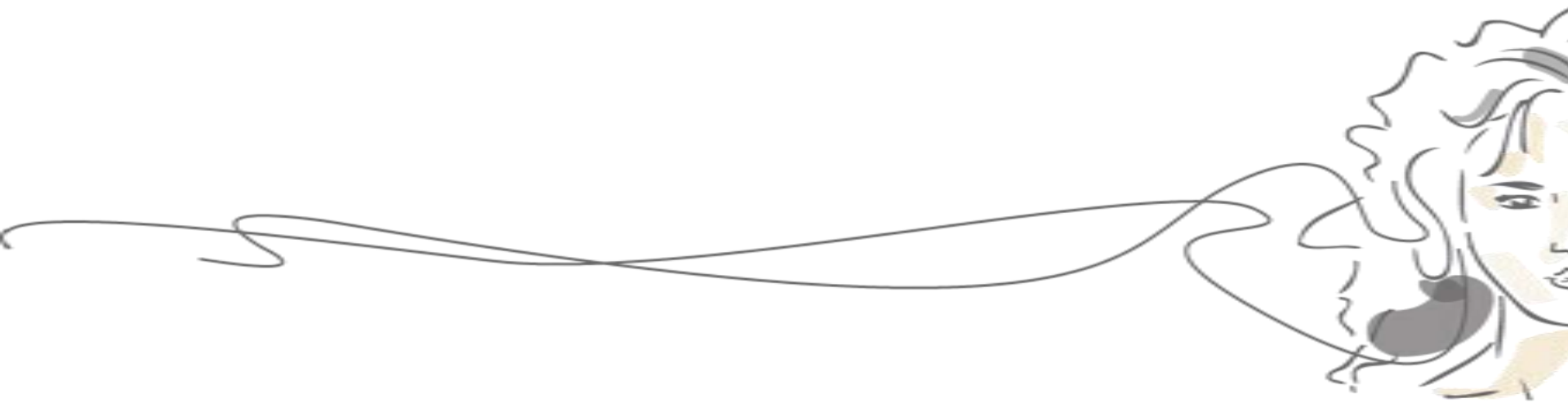
10/05/2020



Accessibility: Cross dimension



Underlying design methodology



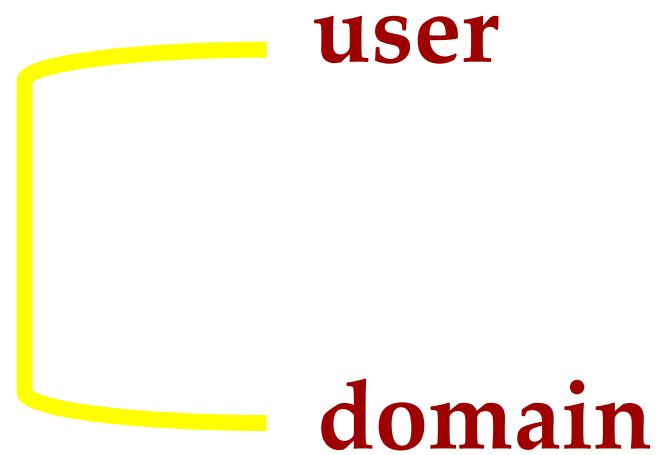
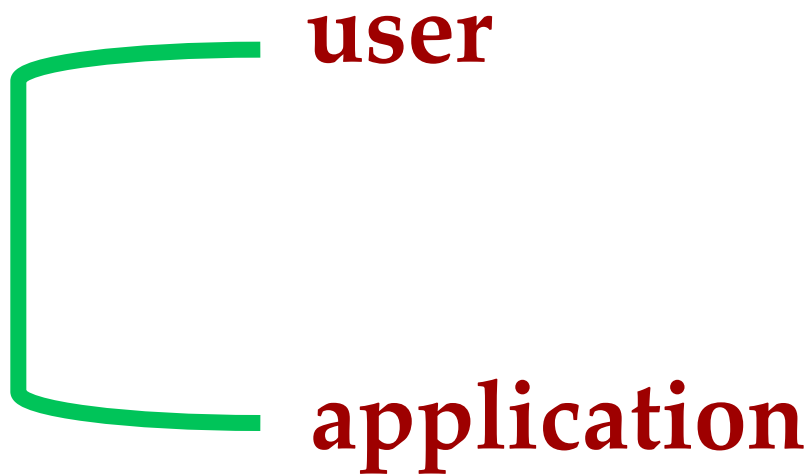
LCD users

10/05/2020



Goals of LCD

To fill the gulfs of experience



Goal of LCD

**user
domain**

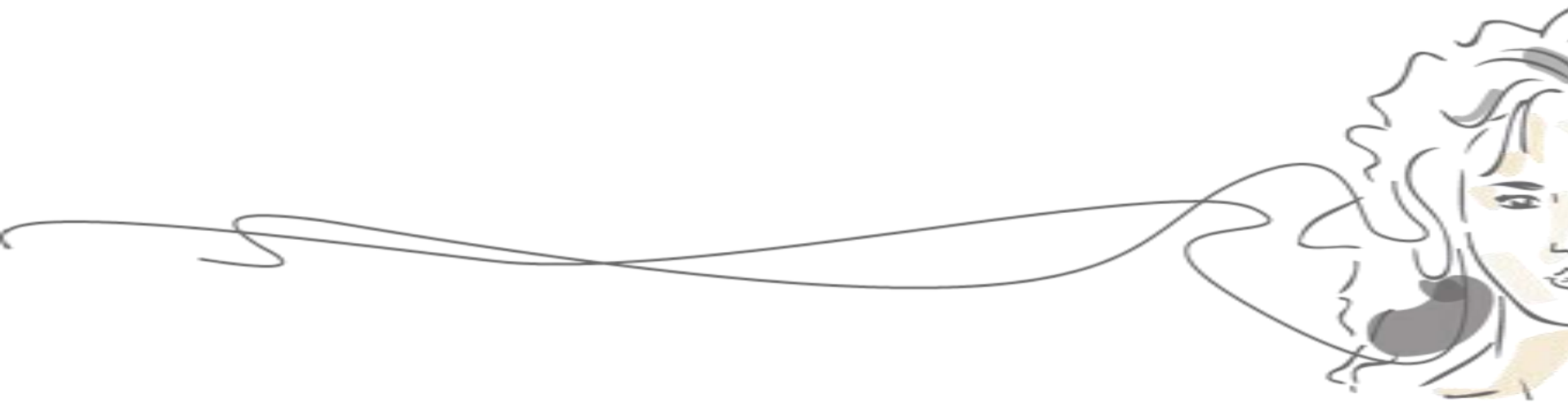
10/05/2020



Condition to reach the goal



Remark



Deaf World

Deaf and e-learning

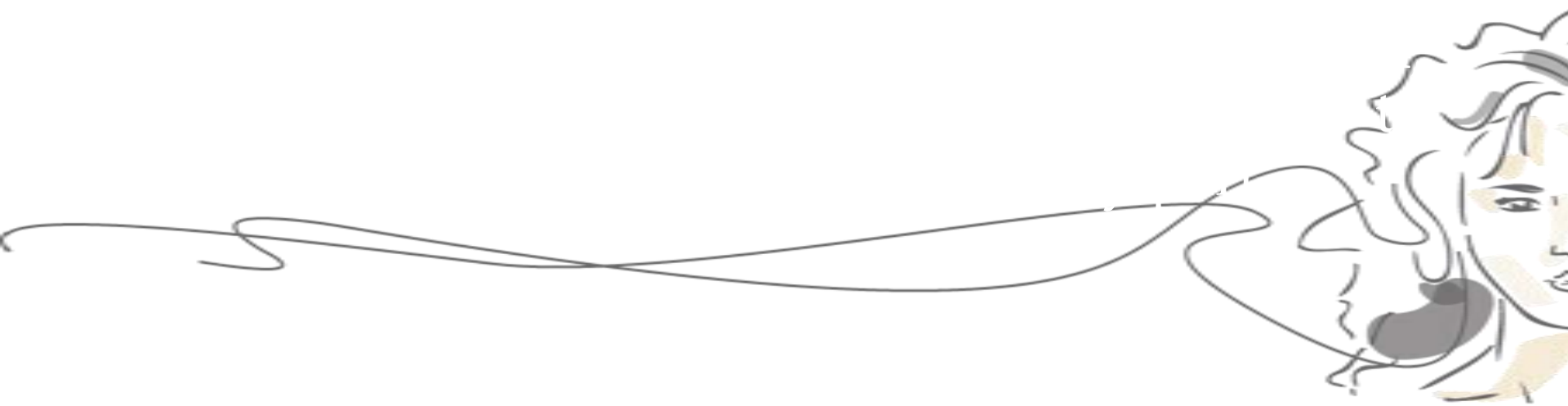
- **SignWriting**

SWift

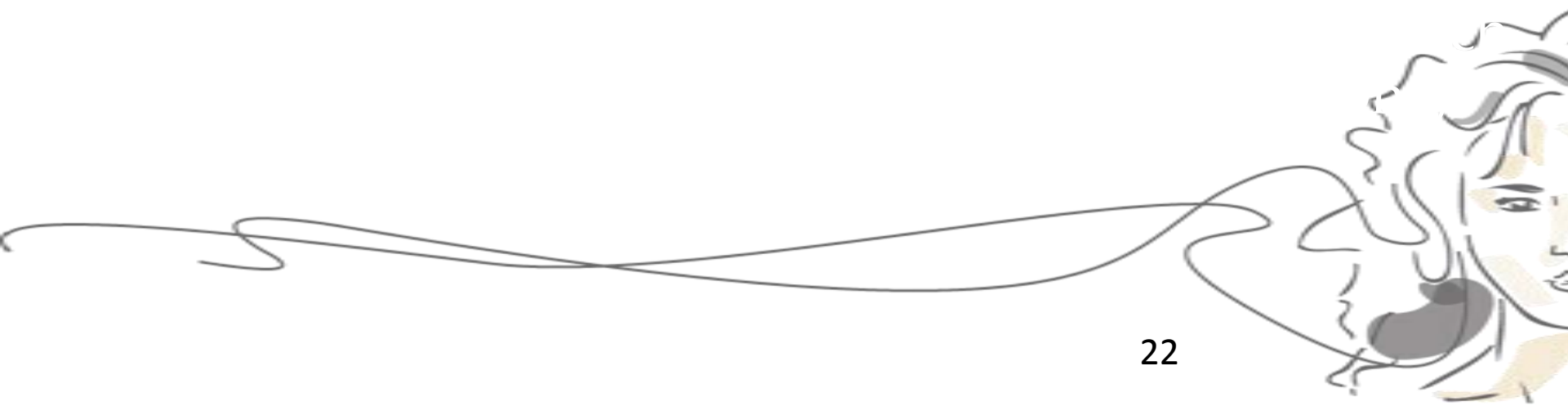
Conclusions



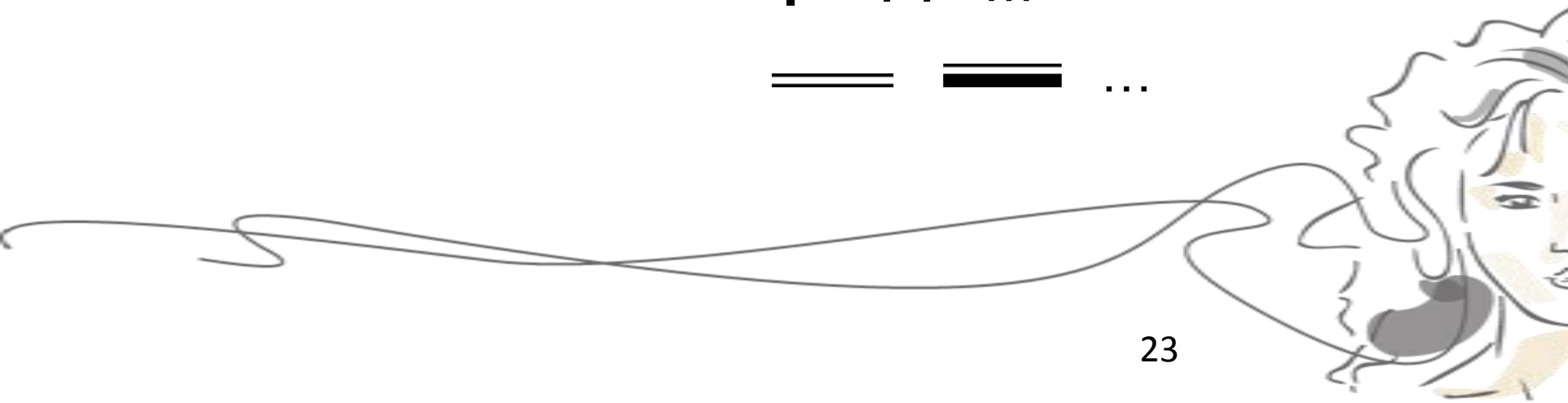
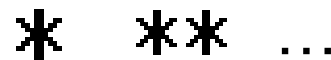
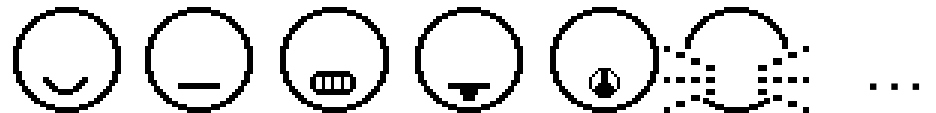
SignWriting



Glyphs



Examples of glyphs



A sign and its elements



Facial Expression



Shoulders Position



Hand Configuration



Contact

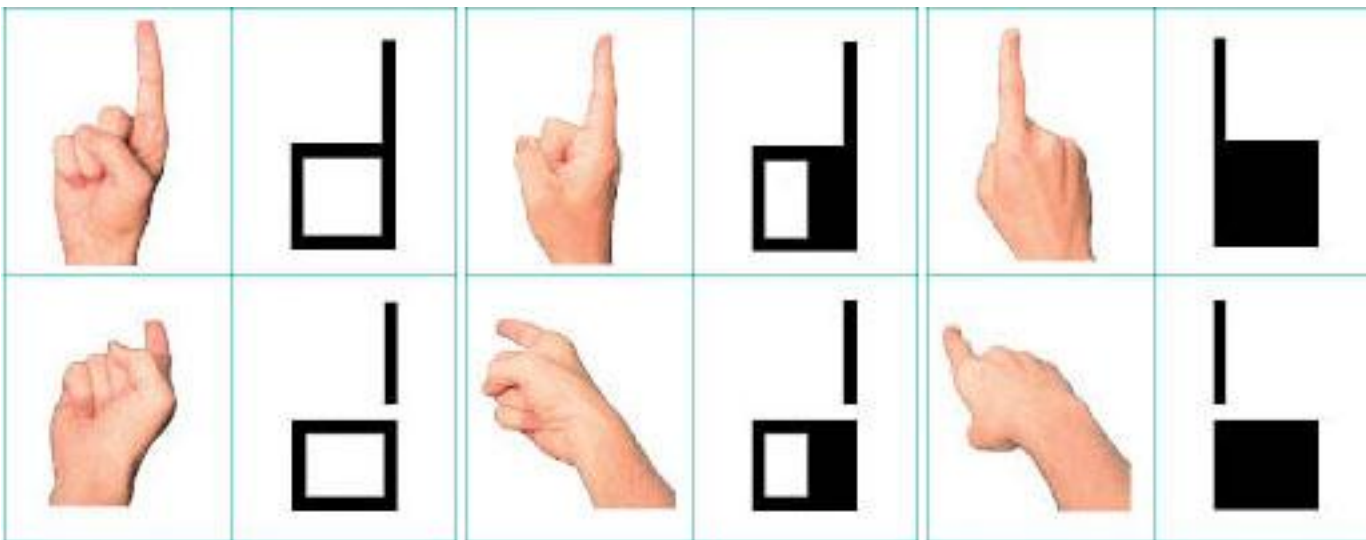


Movement



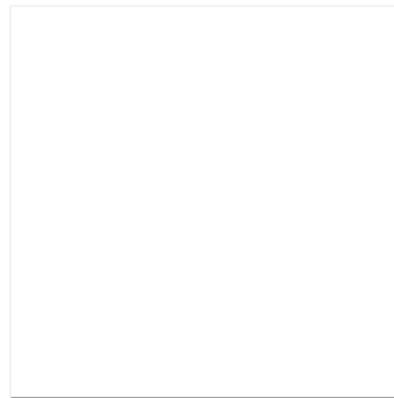
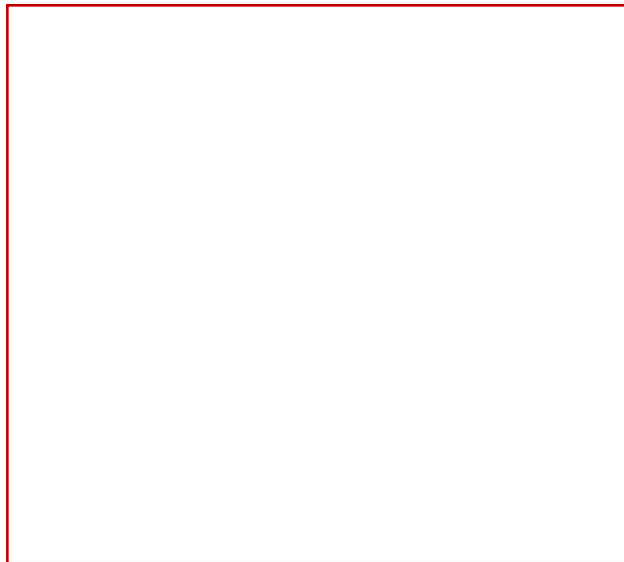
Example


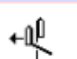










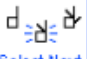


d




















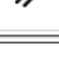









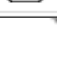


SignMaker

SignMaker

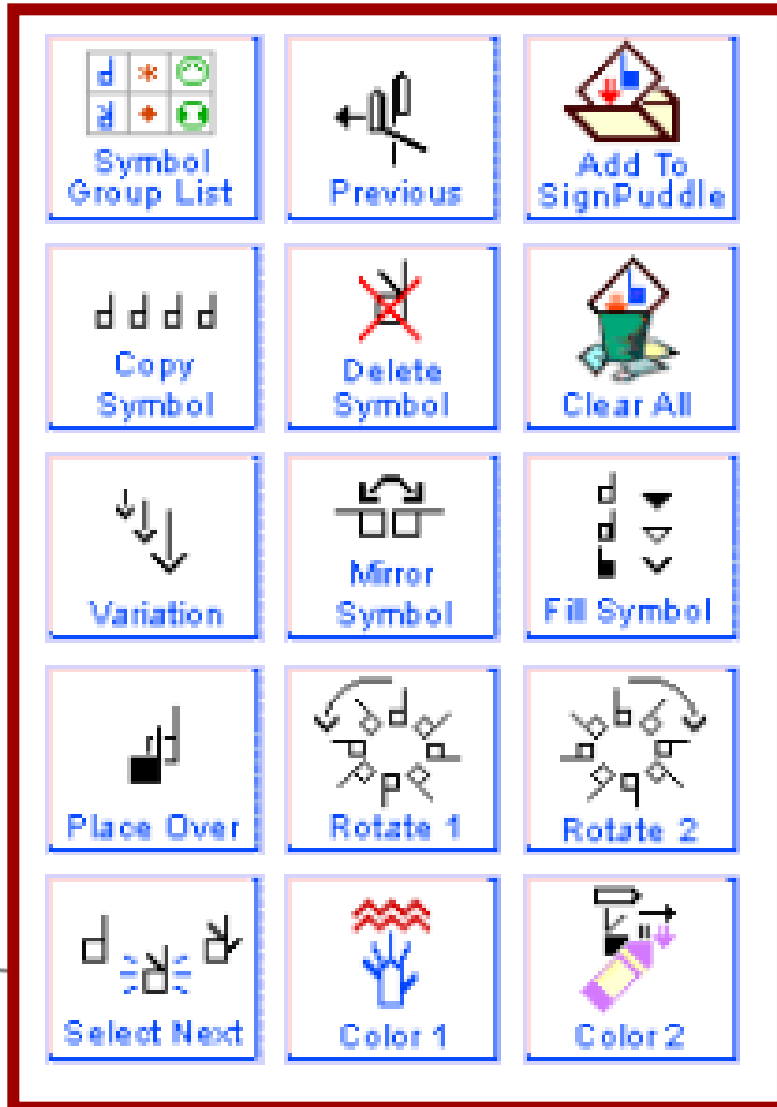


 Symbol Group List	 Previous	 Add To SignPuddle
 Copy Symbol	 Delete Symbol	 Clear All
 Variation	 Mirror Symbol	 Fill Symbol
 Place Over	 Rotate 1	 Rotate 2
 Select Next	 Color 1	 Color 2

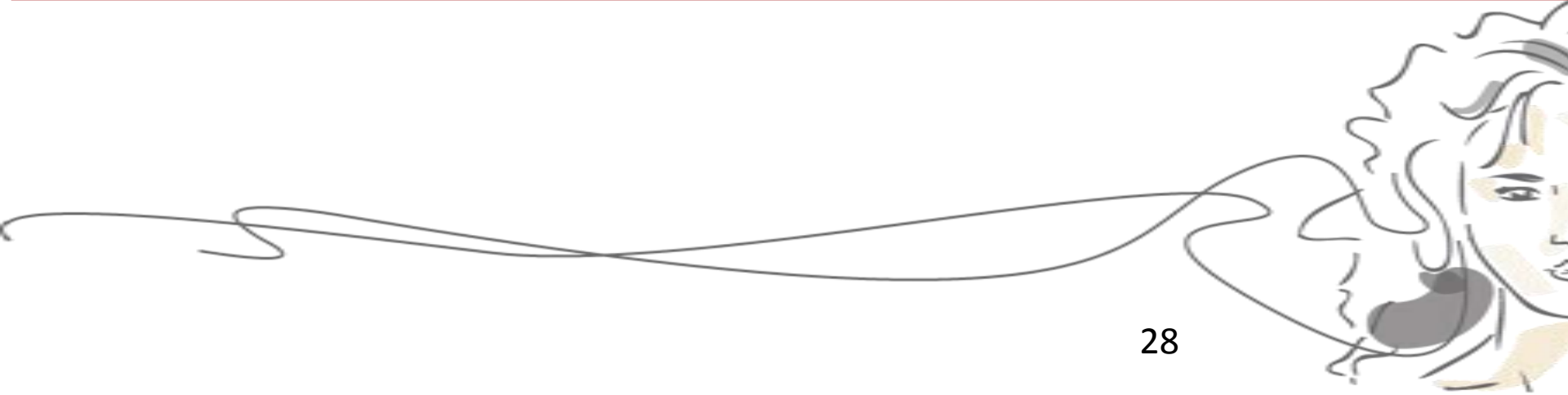
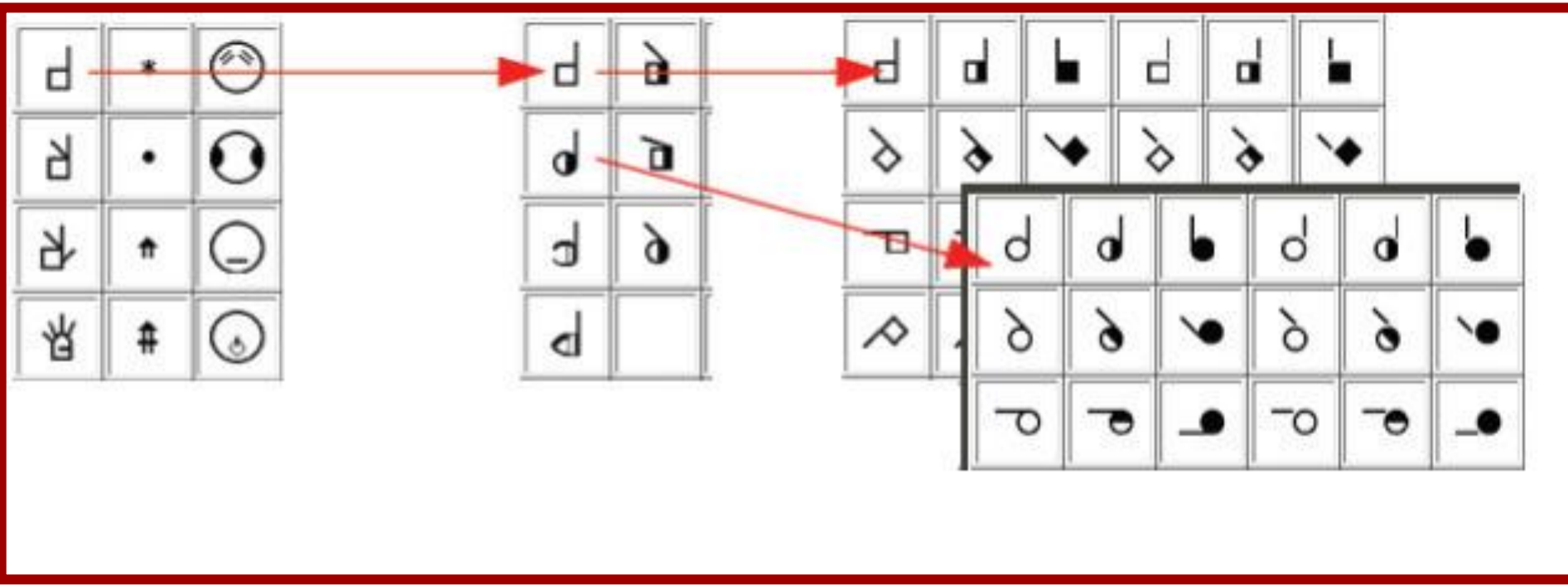
					
					
					
					
					
					
					
					
					
					



SignMaker



SignMaker



Deaf World

Deaf and e-learning

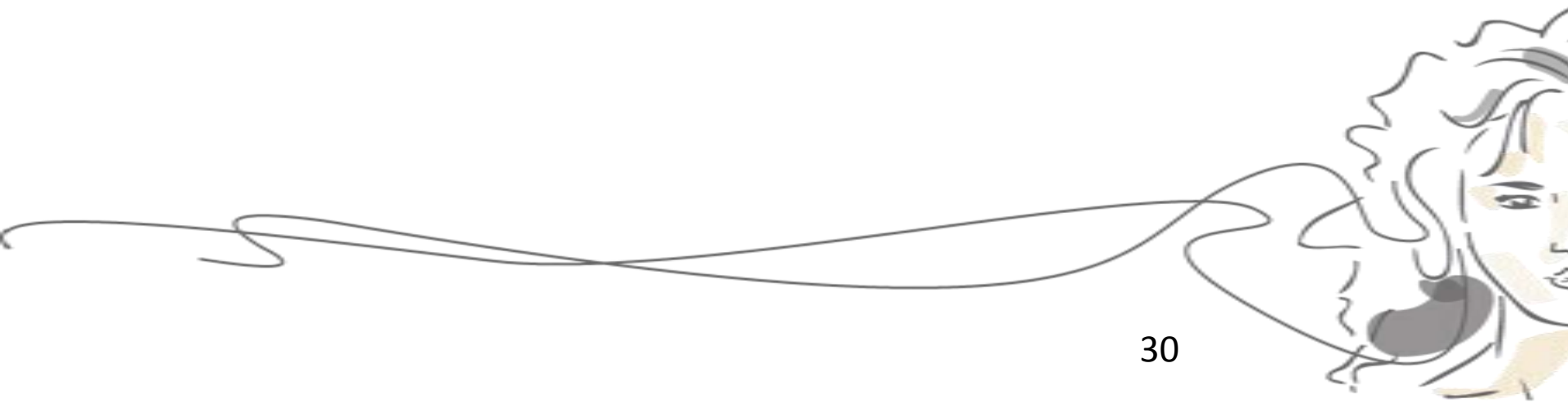
SignWriting

- **SWift**

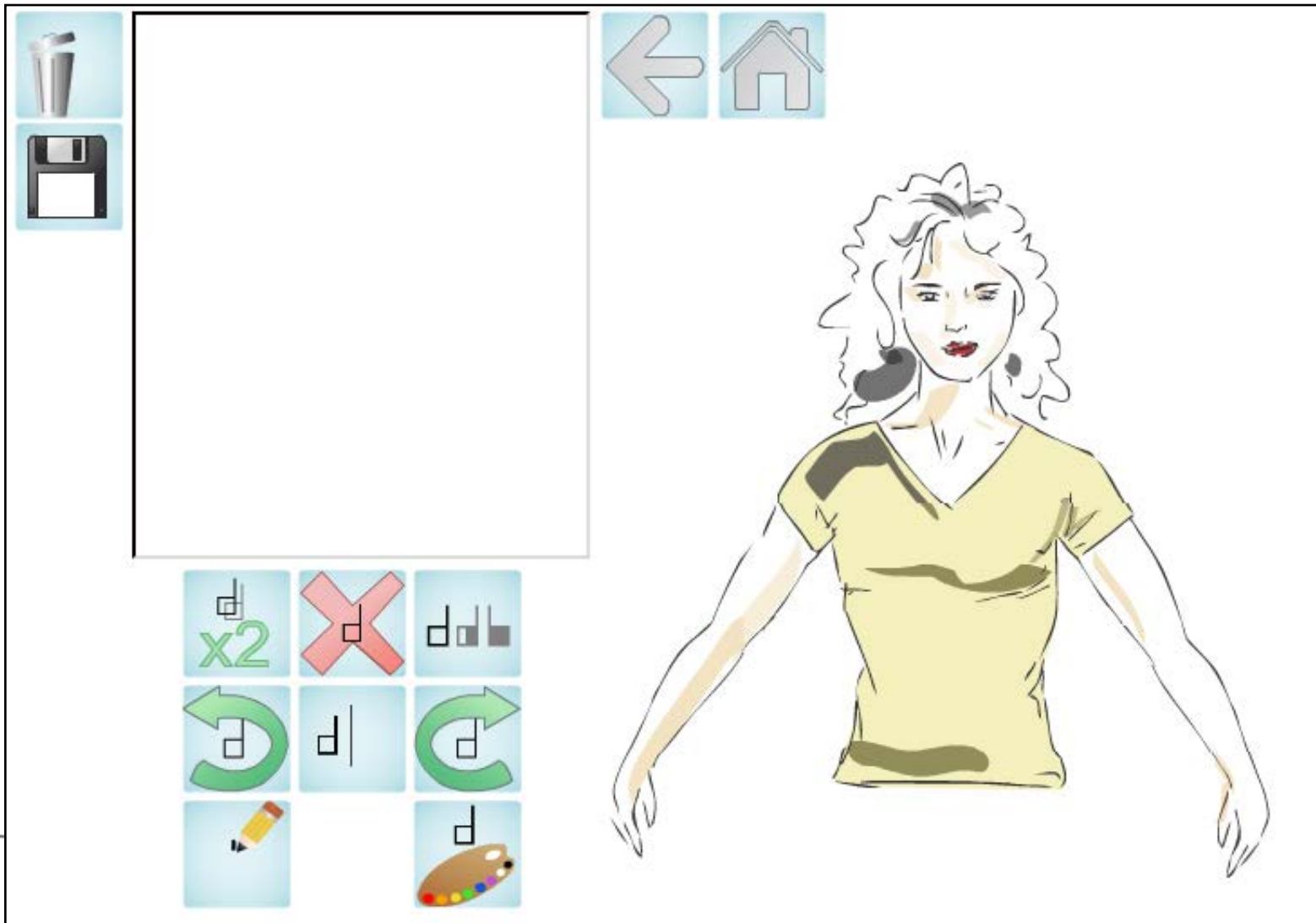
Conclusions



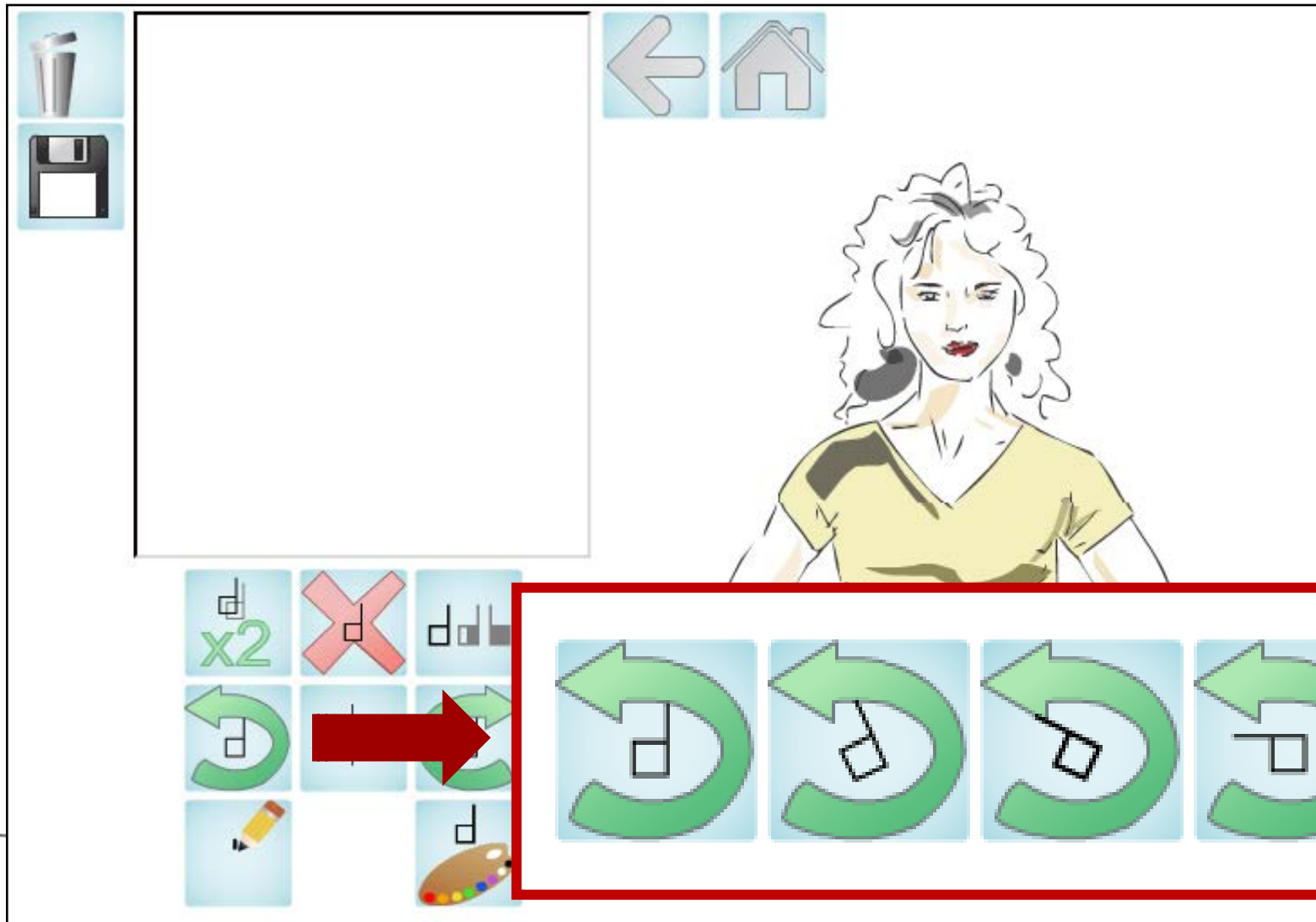
Design approach



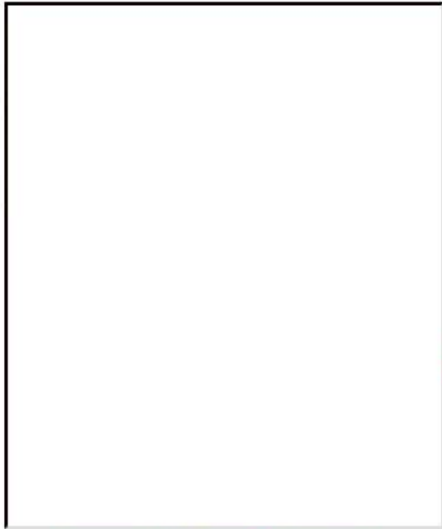
SWift



SWift



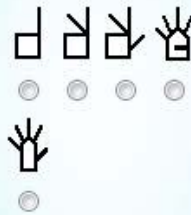
SWift



Configurazioni



Numero Dita:



Mano:



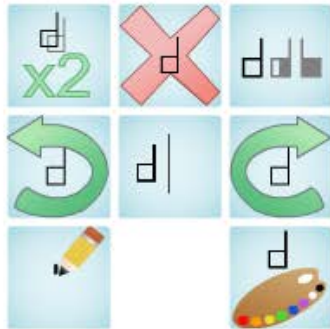
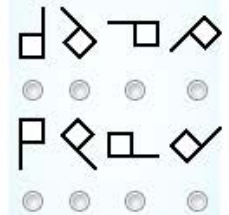
Piano:



Lato:



Rotazione:



Movimenti

BY-NC-SA

SWift - Sign Writing improved fast transcriber
by Fabrizio Borgia is licensed under a Creative Commons
Attribuzione-Non commerciale-Condividi allo stesso modo 2.5 Italia License .

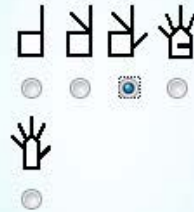
SWift



Configurazioni



Numero Dita:



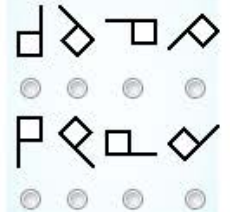
Mano:



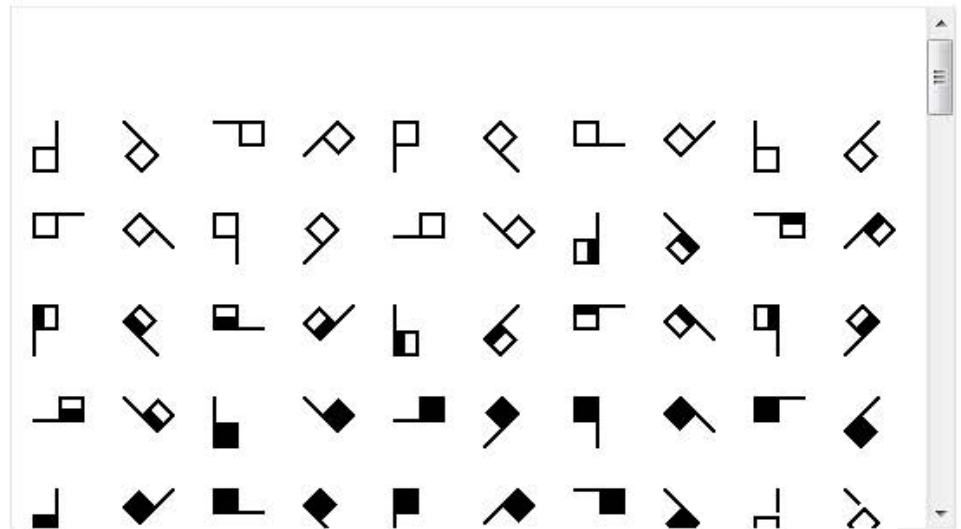
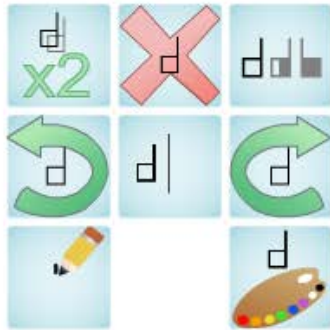
Lato:



Rotazione:



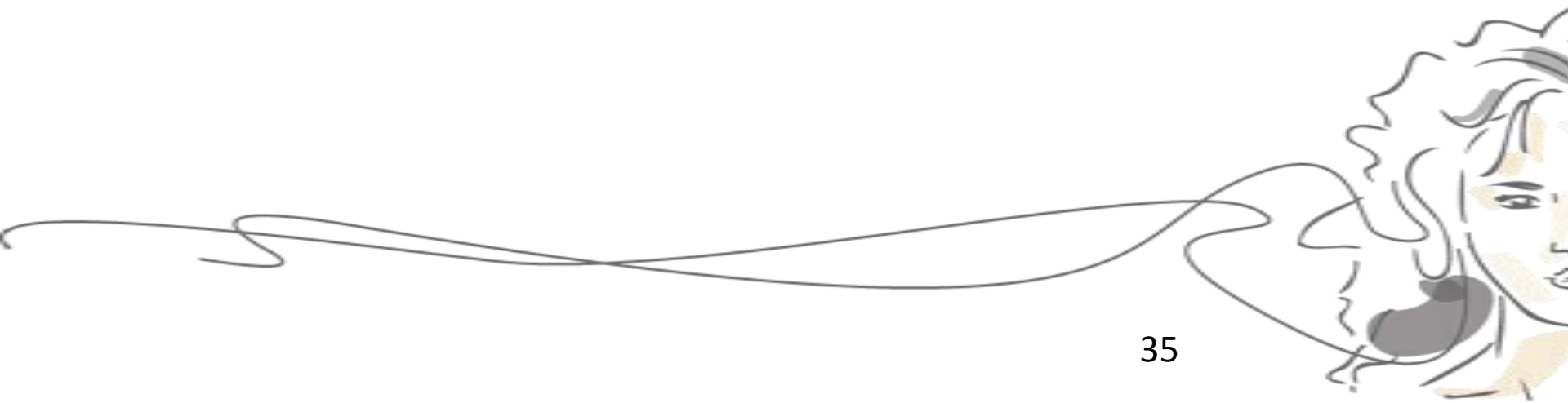
Piano:



(cc) BY-NC-SA

SWift - Sign Writing improved fast transcriber
by [Fabrizio Borgia](#) is licensed under a [Creative Commons](#)
Attribuzione-Non commerciale-Condividi allo stesso modo 2.5 Italia License .

Sign recording



Usability study (1)



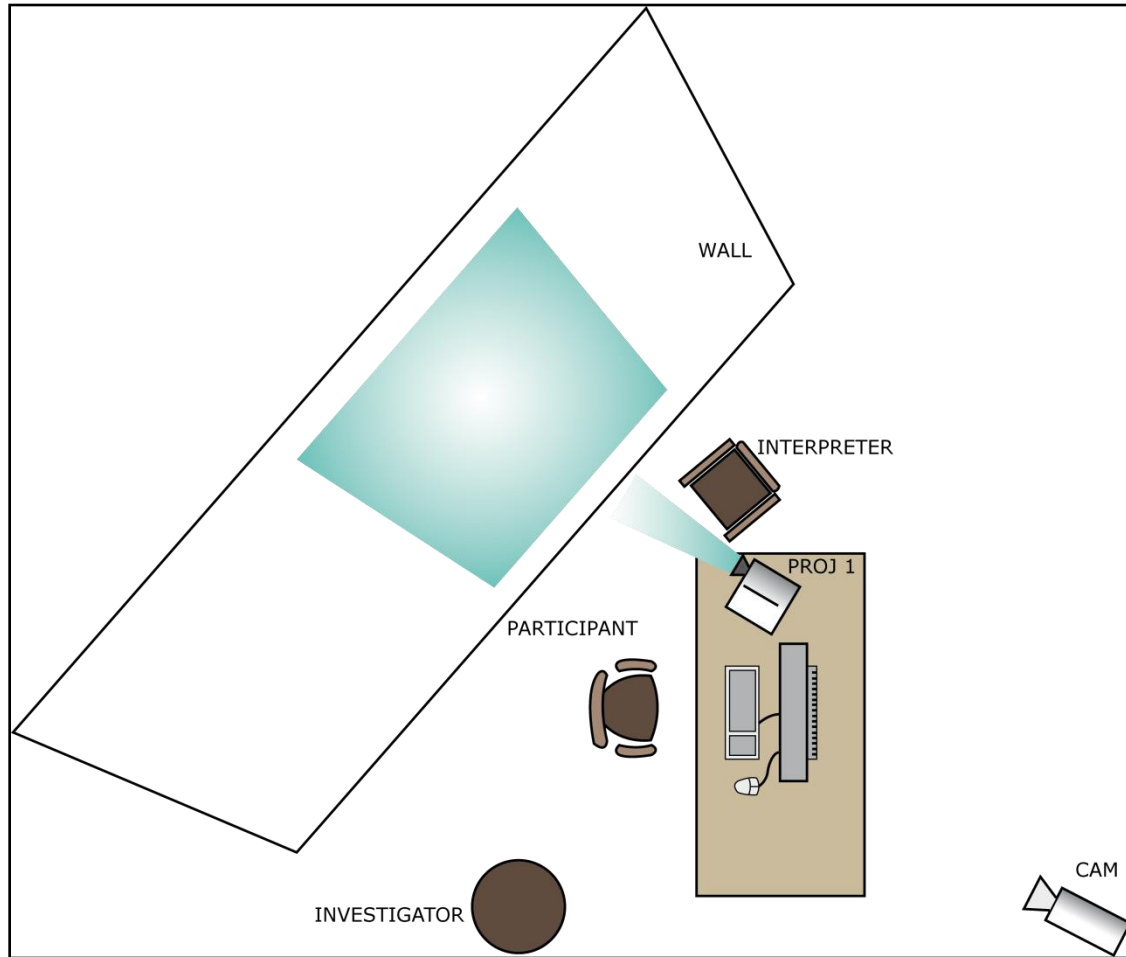
Usability study (2)



Usability study (3)



Usability study: session recording



Evaluation results



Deaf World

Deaf and e-learning

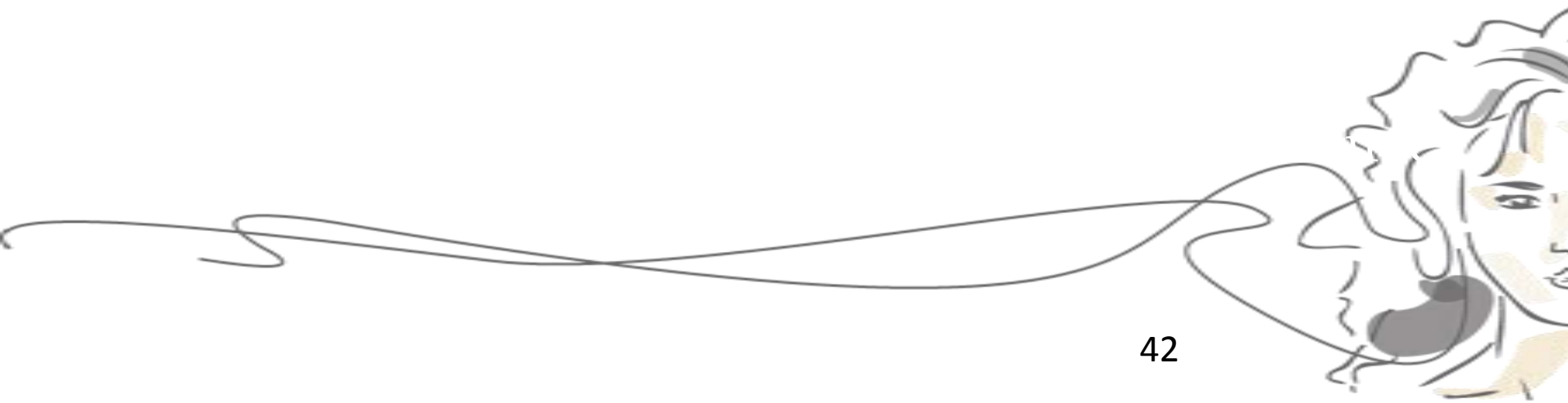
SignWriting

SWift

- **Conclusions**



Conclusions an future work



Conclusions an future work

