



HAL
open science

The confining trailing string

Elias Kiritsis, Liuba Mazzanti, Francesco Nitti

► **To cite this version:**

Elias Kiritsis, Liuba Mazzanti, Francesco Nitti. The confining trailing string. Journal of High Energy Physics, 2014, 02, pp.081. 10.1007/JHEP02(2014)081 . hal-02545564

HAL Id: hal-02545564

<https://hal.science/hal-02545564v1>

Submitted on 5 Sep 2024

HAL is a multi-disciplinary open access archive for the deposit and dissemination of scientific research documents, whether they are published or not. The documents may come from teaching and research institutions in France or abroad, or from public or private research centers.

L'archive ouverte pluridisciplinaire **HAL**, est destinée au dépôt et à la diffusion de documents scientifiques de niveau recherche, publiés ou non, émanant des établissements d'enseignement et de recherche français ou étrangers, des laboratoires publics ou privés.



Distributed under a Creative Commons Attribution 4.0 International License

The confining trailing string

Elias Kiritsis,^{a,c,d} Liuba Mazzanti^b and Francesco Nitti^a

^a*APC, Université Paris 7, CNRS/IN2P3, CEA/IRFU, Obs. de Paris, Sorbonne Paris Cité, Bâtiment Condorcet, F-75205, Paris Cedex 13 (UMR du CNRS 7164), France*

^b*Institute for Theoretical Physics and Spinoza Institute, Utrecht University, 3508 TD Utrecht, The Netherlands*

^c*Theory Group, Physics Department, CERN, CH-1211, Geneva 23, Switzerland*

^d*Crete Center for Theoretical Physics, Department of Physics, University of Crete, 71003 Heraklion, Greece*

E-mail: kiritsis@physics.uoc.gr, l.mazzanti@uu.nl,
nitti@apc.univ-paris7.fr

ABSTRACT: We extend the holographic trailing string picture of a heavy quark to the case of a bulk geometry dual to a confining gauge theory. We compute the classical trailing confining string solution for a static as well as a uniformly moving quark. The trailing string is infinitely extended and approaches a confining horizon, situated at a critical value of the radial coordinate, along one of the space-time directions, breaking boundary rotational invariance. We compute the equations for the fluctuations around the classical solutions, which are used to obtain boundary force correlators controlling the Langevin dynamics of the quark. The imaginary part of the correlators has a non-trivial low-frequency limit, which gives rise to a viscous friction coefficient induced by the confining vacuum. The vacuum correlators are used to define finite-temperature dressed Langevin correlators with an appropriate high-frequency behavior.

KEYWORDS: Gauge-gravity correspondence, AdS-CFT Correspondence, Holography and quark-gluon plasmas

ARXIV EPRINT: [1311.2611](https://arxiv.org/abs/1311.2611)

Contents

| | | |
|----------|--|-----------|
| 1 | Introduction, summary and discussion | 1 |
| 1.1 | AdS/CFT and heavy quark Langevin diffusion | 2 |
| 1.2 | Beyond the local Langevin equation: the need for UV subtraction | 2 |
| 1.3 | The trailing string in a confining vacuum: summary and discussion of results | 4 |
| 1.4 | Limits of applicability of the holographic Langevin approach and connection with observation | 10 |
| 1.5 | Paper structure | 12 |
| 2 | Static trailing string in confining theories | 13 |
| 2.1 | The static trailing string solution | 14 |
| 2.2 | Static trailing string fluctuations | 18 |
| 2.3 | Schrödinger analysis | 20 |
| 2.4 | Boundary conditions and field theory correlators | 21 |
| 2.4.1 | Infalling modes and the <i>shadow quark</i> | 23 |
| 2.4.2 | Transverse and longitudinal propagators | 23 |
| 2.4.3 | Diffusion constants | 25 |
| 2.4.4 | High frequency limit | 25 |
| 3 | Fluctuation-dissipation relations | 25 |
| 3.1 | The trailing string geometry | 26 |
| 3.2 | Explicit calculation of the correlators | 27 |
| 4 | The trailing confining string for a uniformly moving quark | 33 |
| 4.1 | String parallel to the quark velocity | 34 |
| 4.2 | The general case | 35 |
| 4.2.1 | Classical solution | 35 |
| 4.2.2 | Fluctuations | 37 |
| 5 | Boundary correlators for quark in uniform motion | 38 |
| 5.1 | Averaging over string orientations | 39 |
| 5.1.1 | Ω -averaged correlators | 40 |
| 5.1.2 | w -averaged correlators and the shadow quark picture | 41 |
| 5.1.3 | Fixed-direction correlators | 42 |
| 5.1.4 | Static and ultra-relativistic limit | 43 |
| 5.2 | High-frequency limits | 43 |
| 5.3 | Low-frequency limit and friction coefficients | 44 |
| 5.4 | Drag force consistency conditions | 45 |
| 5.5 | Consistency of the holographic correlators | 46 |

| | | |
|----------|--|-----------|
| 6 | The dressed Langevin correlators in the confining holographic theory | 48 |
| 6.1 | Friction from the dressed correlators | 49 |
| 6.2 | Dressed Langevin correlators in Improved Holographic QCD | 51 |
| 6.2.1 | Dressed correlators with fixed shadow quark | 52 |
| 6.2.2 | Dressed correlators averaged over the shadow quark velocity | 54 |
| 6.3 | Effects of a finite quark mass, and limits of applicability of the Langevin approach | 54 |
| A | Black-hole trailing string revisited | 58 |
| B | Background and fluctuations for the trailing string in the general case | 59 |
| B.1 | Classical solution | 59 |
| B.2 | Fluctuations | 60 |
| C | Correlators from the confining trailing string | 62 |
| D | Averaging over the shadow quark velocity | 65 |
| E | Antisymmetric contribution to fluctuation action | 66 |
| F | Langevin equation and consistency relations | 67 |
| F.1 | Langevin equation for the fluctuations around a classical trajectory | 67 |
| F.2 | A double-field Ward identity | 70 |

1 Introduction, summary and discussion

The AdS/CFT correspondence, or holographic gauge/gravity duality, has offered a new way of looking at quantum large- N gauge theories in the strongly-coupled regime, providing a reformulation in terms of degrees of freedom propagating in a higher-dimensional, curved space-time.

One of the most important practical applications of this framework is the connection between the high-temperature deconfined phase of QCD, explored in heavy-ion collision experiments (the Quark-Gluon Plasma, or QGP), and its dual description in terms of a higher-dimensional black hole. In this context, one can map many of the relevant observables on the gauge theory side (like thermodynamic quantities and hydrodynamic transport coefficients), to corresponding gravitational quantities.

Although this mapping is best understood in a supersymmetric and conformally invariant relative of QCD, namely $\mathcal{N} = 4$ super-Yang-Mills theory, it is believed that at the qualitative level for some phenomena, such differences may not matter a lot in the deconfined phase. However, deviations from conformal invariance are important close to the deconfinement transition, and non-conformal models have been developed to improve the holographic description, both in the context of critical string theory (e.g. [1–4]) and following a phenomenological, bottom-up approach like in [5–10].

1.1 AdS/CFT and heavy quark Langevin diffusion

One important class of observables that can give insight into the properties of the QGP are related to the out-of-equilibrium production and subsequent diffusion of a heavy quark (Charm or Bottom). The latter undergoes a process of Brownian-like motion which, in the limit when the relaxation time scale is much longer than the thermal correlation time, can be described using a Langevin equation with a viscous friction and a stochastic force $\xi(t)$,

$$M_q \ddot{X}(t) + \eta \dot{X}(t) = \xi(t), \quad \langle \xi(t) \xi(t') \rangle = \kappa \delta(t - t'). \quad (1.1)$$

The resulting particle distribution and energies after hadronization can be interpreted in terms of the original particle energy loss (governed by η) and of the broadening of its transverse momentum in the plasma (governed by κ), due to the interactions with the medium.

The AdS/CFT duality, already in its simplest form, offers a way to compute the coefficients η and κ entering the Langevin equation. This has been carried out in the case of the supersymmetric and conformally invariant $\mathcal{N} = 4$ Super-Yang-Mills theory, in a series of papers [11–20] in which a heavy quark moving at constant velocity \vec{v} is mapped holographically into a classical string extending into the bulk AdS-Schwarzschild black hole geometry, and trailing its uniformly moving endpoint, that represents the boundary quark. In this context, the two-dimensional metric induced on the string world-sheet has a horizon r_s , which coincides with the black hole horizon r_h in the static case, whereas it is outside of the latter when the quark has a finite speed. Similarly, in the static case the temperature on the world-sheet is the same as the bulk Hawking temperature, whereas in the moving case the effective world-sheet temperature T_s is lower. Similar results are obtained when this picture is generalized to non-conformal backgrounds, as was done in [21–23], and to cases where flavor dynamics is included [24].

In this context, the Brownian motion of the boundary quark can be seen as arising from the effect of the thermal Hawking radiation emanating from the world-sheet horizon, and propagating to the boundary along the string, [18, 19]. The viscous parameter η and diffusion constant κ are computed by the low-frequency limit of the boundary correlators associated to the string fluctuations. The latter are effectively two-dimensional bulk fields living on the string world-sheet, and the retarded correlators are computed by the standard prescription giving in-falling boundary conditions at the (world-sheet) horizon.

1.2 Beyond the local Langevin equation: the need for UV subtraction

Many of the qualitative differences between $\mathcal{N} = 4$ SYM theory and real-world QCD (such as supersymmetry and conformal invariance) disappear at finite temperature, possibly making a direct comparison of the results cited above with experiments meaningful. However, the breaking of conformal invariance by temperature is soft, which results in a conformal equation of state of the $\mathcal{N} = 4$ (conformal) plasma. While this may not be a problem at very high temperatures, where the QCD equation of state also approaches conformality due to asymptotic freedom, things are very different even at the qualitative level around the QCD deconfinement phase transition. There, deviations from a conformal equation of

state are significant. Moreover, in the $\mathcal{N} = 4$ plasma the coupling is constant, a fact that has no counterpart in real-world QCD, where the coupling constant runs.

For these reasons, the AdS-Schwarzschild trailing string computation was extended in [23] to a generic, non-conformal black hole with a non-constant scalar (dual to the Yang-Mills coupling). The results showed that the friction and diffusion coefficients acquire an additional momentum dependence compared to the conformal case.

Moreover, the results of [23] indicated that for high enough momenta and temperatures — but still within the reach of LHC heavy-ion experiments — the simple (Markovian) Langevin equation (1.1) is not enough to describe the evolution, because the relaxation process happens on time scales comparable with the thermal correlation time. In this case, the local Langevin equation must be replaced by a *generalized* Langevin equation, which includes memory effects, and in which the stochastic force has a finite correlation width,

$$M_q \ddot{X}(t) + \int dt G(t-t') \dot{X}(t') = \xi(t), \quad \langle \xi(t) \xi(t') \rangle = G_{\text{sym}}(t-t'). \quad (1.2)$$

Here, $G(t-t')$ and $G_{\text{sym}}(t-t')$ are respectively the retarded and symmetrized correlators of the microscopic force coupling the probe quark to the plasma. The form (1.1) is then recovered in the long-time limit, and the coefficients η and κ are the lowest terms in the Fourier-space low-frequency expansions

$$G(\omega) \sim -i\eta\omega + \dots, \quad G_{\text{sym}}(\omega) \sim \kappa + \dots, \quad \text{as } \omega \rightarrow 0. \quad (1.3)$$

The regimes where the local and the generalized Langevin equations hold are discussed in section 6.3, where they are also graphically represented in figure 11, for the case of the specific confining model we use for the numerical analysis.

The holographic computation gives access to the full correlators appearing in (1.2). One of the results of [23] was that, under the sole assumption of UV AdS asymptotics of the background, the imaginary part of the retarded correlator behaves at high-frequency as:

$$\text{Im } G(\omega) \sim \omega^3, \quad \text{as } \omega \rightarrow \infty, \quad (1.4)$$

with a temperature-independent coefficient that has been computed explicitly. The ω^3 behaviour can be understood from dimensional analysis and from the restoration of conformal invariance in the UV.

Equation (1.4) has some drastic consequences, since with such a behavior, the standard dispersion relations between the real and imaginary part of the retarded correlator break down: these relations require G to fall off at least as $1/\omega$ at high frequency. This also means that, if one tries to use such a correlator in a numerical simulation of the Langevin process, the short-time effects will immediately dominate the dynamics and it will be impossible to reach a stationary state not too far from the initial state.

Faced with these problems, in [25] a subtraction procedure was adopted, to define *dressed* correlators with a softer high-frequency behavior. The physical reason is that the Langevin evolution of the heavy quark are defined by subtracting from the medium the vacuum contributions, and is the analogue of normal ordering in standard QFT.

From the observation that the leading divergent term is temperature-independent, it was proposed in [25] that the physical correlator is obtained by subtracting the corresponding *vacuum* contribution:

$$G^{(\text{sub})}(\omega) = G(\omega) - G^{(\text{vac})}(\omega). \tag{1.5}$$

The subtracted term is the correlator obtained from the trailing string solution in the vacuum geometry with no black hole. A similar subtraction was adopted in [26] in the case of bulk stress-tensor correlators.

The prescription (1.5) can be formally obtained by a change of variables in the heavy-quark path integral, in the limit where the quark mass is much larger than the frequency. For finite quark mass the UV behavior is softer than in (1.4), growing only linearly with frequency. However, as shown in [25], a finite quark mass should be considered as a UV cut-off, above which presumably other kinds of energy loss (e.g. radiative) begin to dominate. In this work we will consider the case where the quark mass is very large, i.e. we use equation (1.5) as the definition of the subtracted correlator even for finite quark mass M_q in the appropriate frequency range as discussed in sections 1.4 and 6.3.

The subtraction corresponds to the requirement that a physical quark in the vacuum does not undergo any dissipation. As was shown in [25], the dressed correlator defined in (1.5) has indeed the correct high-frequency asymptotics to ensure validity of the appropriate sum rules and dispersion relations.

1.3 The trailing string in a confining vacuum: summary and discussion of results

In [25] the computation of the subtracted (vacuum) term was carried out in the case where the vacuum geometry is dual to a non-confining gauge theory. In this case the computation is straightforward, since the trailing string profile has a trivial (straight) shape. However, it was found that the same profile, when used in a *confining* geometry¹ leads to unphysical results, in particular in the *low frequency* limit of the correlators. The reason, as we will see, is that the straight string solution used in [25] is *not* the correct saddle-point configuration of the classical trailing string in a confining vacuum.

The motivation and starting point of this paper is to resolve this issue: in this work, we will describe the features of the trailing string configuration in a confining bulk background, study the fluctuations around such a classical configuration, and compute the corresponding vacuum boundary propagators. As we shall see, the physics that emerges has interesting features on its own.

Before we proceed to the detailed discussion of this problem, we outline the main results. We assume a metric in the *string frame*² of the form

$$ds^2 = b(r)^2 [dr^2 + \eta_{\mu\nu} dx^\mu dx^\nu], \quad 0 < r < +\infty, \tag{1.6}$$

¹By this, we mean a geometry that satisfies the general confinement criterion expressed in terms of the holographic Wilson loop [30]. In a five-dimensional setup, generated by a scalar field coupled to the Einstein metric, this criterion translates into a requirement on the scalar field potential in the infrared, as was shown in [9].

²Note that if the dilaton is non-trivial, as it is in YM, this metric is different from the Einstein metric.

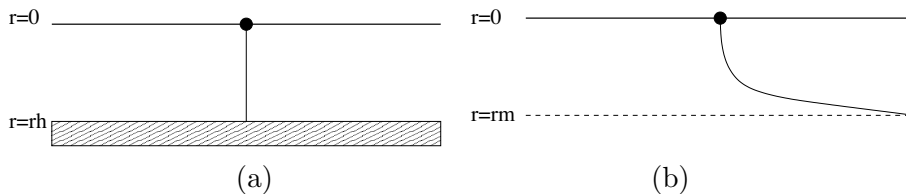


Figure 1. The static trailing string configurations in a bulk black hole background (a) and in a bulk confining geometry (b).

with $r = 0$ corresponding to the UV boundary, and $r = +\infty$ corresponding to the IR (which is generically (mildly) singular in a purely five-dimensional theory).

In this setting, confining backgrounds are characterized by the existence of a minimum of the *string frame* scale factor $b(r)$ at a value $r = r_m$ of the bulk coordinate. This condition ensures that the Wilson loop, computed holographically, exhibits an area law, with a confining string tension σ_c set by the value of the scale factor at the minimum, i.e. $\sigma_c = b^2(r_m)$ in string units. Here, it is important to make the distinction between the string frame scale factor, which can be non-monotonic, and the *Einstein frame* scale factor, which is necessarily monotonically decreasing if the bulk theory does not violate the null energy condition. This distinction is non-trivial when the string dilaton is running, as is the case for the five-dimensional models considered here. By an abuse of language, we call the surface $r = r_m$ the *confining horizon*, since for some aspects of the analysis it plays the same role as a world-sheet horizon.

Static quark. We first discuss the case where the boundary probe quark is static. The trailing string in the interior is represented by an embedding of the form

$$\vec{X}(r, t) = \vec{\xi}(r), \quad \vec{\xi}(0) = 0, \tag{1.7}$$

and is found by extremizing the Nambu-Goto action. We find there exists a one-parameter family of trailing string solutions, which display a kink in the holographic directions. In this one-parameter set, there is a special solution which does not reach the $r \rightarrow \infty$ region, but instead approaches the confining horizon r_m along one of the spatial directions. This is to be contrasted with non-confining geometries, where $b(r)$ is monotonic, and the only allowed string configuration is the trivial one with $\vec{\xi}(r) \equiv 0$ (see figure 1).

The confining trailing string solution has the following features.

1. The induced two-dimensional geometry is asymptotically AdS_2 in the UV ($r = 0$ region) and it becomes asymptotically flat 2-dimensional Minkowski space-time as $r \rightarrow r_m$ (See equations (2.14)–(2.17)). The IR asymptotically flat part can be parametrized by time and one of the spatial directions, or equivalently by an exponential change of coordinate $r_m - r \sim e^{-z}$. In the non-confining case, instead, the string configuration is a straight line that extends from the UV boundary to the IR at $r = \infty$, the worldsheet geometry is still AdS_2 in the UV, but there is no confining horizon.

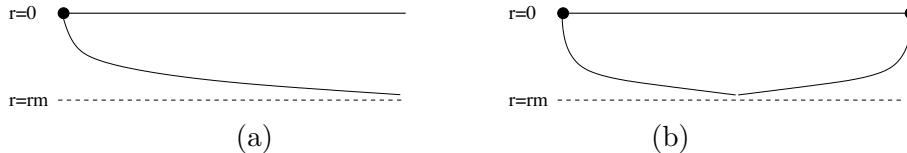


Figure 2. The confining trailing string with a single endpoint (a) can be seen as the limit of the Wilson-line configuration connecting a quark and an anti-quark (b).

2. From the boundary point of view, the string represents the infinite flux tube which must be attached to a single probe quark in a confining theory. In fact, the energy of the flux tube matches the confining string tension, as it is given by the length of the string measured along the confining horizon $r = r_m$, i.e. $E \sim b^2(r_m) L \sim \sigma_c L$.
3. The trailing string solution can be understood as *half* of the holographic Wilson loop configuration analyzed in [28–30], where a boundary quark-antiquark pair is connected by a finite length string: in the limit where the anti-quark is sent to infinity along one of the spatial directions, the string approaches indefinitely the confining horizon r_m (see figure 2). The picture in terms of this unobserved *shadow quark* at infinity will play a significant role in what follows.
4. The configuration breaks the boundary $SO(3)$ rotational invariance to the $SO(2)$ around the string direction. This breaking is spontaneous, as the string profile vanishes as we approach the boundary. The way to think about this breaking, and whether one should recover rotational invariance or not (for example by averaging over the possible string directions) will be discussed later.

Boundary correlators governing the dynamics of the quark (and used in the subtraction procedure outlined above) can be found by analysing fluctuations around the classical string solution,

$$\vec{X}(t, r) = \vec{\xi}(r) + \delta\vec{X}(t, r). \quad (1.8)$$

In order to compute the correlators we have to choose suitable boundary conditions for the fluctuations in the IR. *We argue that the appropriate boundary conditions are infalling at r_m , as in the case of a black hole horizon.* To understand why, consider the two-quark picture of the previous paragraph. We want to study the local retarded response of the medium to a fluctuation in the position of a single quark at the origin, without any information coming from the “shadow” quark at infinity. The condition that the shadow quark does not send any information back along the string (which is consistent precisely when we consider this quark as being infinitely far, since any signal will take an infinite time to reach it and come back) is encoded in the requirement that the fluctuations travelling along the string are ingoing at spatial infinity (the confining horizon). As for the case of a true black hole horizon, this choice will induce low frequency modes and dissipation effects.

Due to the breaking of isotropy by the background, we have to distinguish between fluctuations that are transverse and longitudinal to the string direction, δX^T and δX^L . Then,

the boundary retarded correlators are computed by the standard holographic prescription,

$$G^{L,T}(\omega) = \lim_{r \rightarrow 0} [\mathcal{G}(r) \delta X^{L,T}(-\omega, r) \partial_r \delta X^{L,T}(\omega, r)], \quad (1.9)$$

where $\mathcal{G}(r)$ is a function of the background metric coefficients only.

Our analysis of the fluctuations can be summarized by following results:

1. In the *longitudinal sector*, the spectrum is gaped,

$$\omega > 4\pi T_m, \quad T_m \equiv \frac{1}{4\pi} \sqrt{\frac{2b'(r_m)}{b(r_m)}}. \quad (1.10)$$

Correspondingly, the imaginary part of the longitudinal retarded correlator $G^L(\omega)$, identically vanishes at frequency $\omega < 4\pi T_m$, and there are no long-lived modes in this sector. The explicit form of the correlator is given in equation (2.56).

2. In the *transverse sector* on the other hand, there is a continuum of modes starting at $\omega = 0$, thus signaling the presence of arbitrarily low frequency excitations.³ Infalling modes at the confining horizon behave exactly as infalling modes in a *black-hole* horizon, with the Hawking temperature given by T_m (1.10):

$$\delta X^T(t, r) \sim e^{-i\omega t} (r_m - r)^{-i\omega/(4\pi T_m)}. \quad (1.11)$$

The full transverse correlator is given in equation (2.53). At low frequencies, one finds a non-vanishing viscous friction coefficient for the boundary quark even at zero temperature, i.e. the quark experiences a drag caused by being immersed in a confining vacuum. At low frequency we have

$$G^T(\omega) \sim -i\sigma_c \omega + \dots \quad (1.12)$$

therefore the viscous friction coefficient in the transverse sector is equal to the confining string tension (cfr. equation (1.3)):

$$\eta^T = \sigma_c. \quad (1.13)$$

3. Despite the similarity of the solution (1.11) with the corresponding black hole infalling modes, the parameter T_m that governs the near-horizon behavior of the transverse fluctuation is *not* to be interpreted as a temperature: we show this by an explicit computation of the fluctuation-dissipation relation between the symmetric and the retarded correlators, using the method described in [27]. We find that the fluctuation-dissipation relation has the form (equation (3.36)):

$$G_{\text{sym}}(\omega) = -\text{sign}(\omega) \text{Im} G(\omega), \quad (1.14)$$

³The transverse mode spectrum becomes discrete with two normalizable massless modes when the second endpoint is brought to a finite distance, as found in [31]. In the infinitely long string limit the massless modes become non-normalizable and disappear in a continuum spectrum starting at $\omega = 0$.

which is the zero-temperature limit of the thermal fluctuation-dissipation relation $G_{\text{sym}} = -\coth(\omega/2T)\text{Im} G(\omega)$. Therefore, we conclude that the quantum state of the fluctuations is the zero-temperature vacuum. As a consequence, although it displays a non-vanishing friction coefficient η^T in the transverse sector given by equation (1.13), the corresponding Langevin diffusion coefficient κ^T vanishes, as can be seen by taking the zero-frequency limit of (1.14) and comparing with (1.3).

On the other hand, we can turn on a thermal gas of fluctuations over the confining vacuum, and this will turn on dissipation, as a thermal FD relation at a temperature T now gives:

$$\kappa^T(T) = 2T\sigma_c. \tag{1.15}$$

Notice that this is very different from the non-confining case, in which $\text{Im} G(\omega) \sim \omega^a$ at low frequency with $a > 1$, and even in a thermally excited state κ vanishes [25].

4. We can recover rotational invariance by averaging over the string direction. This can be done analytically, and the result for the static case is the simple geometric average:

$$\langle G(\omega) \rangle = \frac{1}{3}G^L(\omega) + \frac{2}{3}G^T(\omega). \tag{1.16}$$

5. The above results were obtained in the case of a five-dimensional vacuum geometry characterized by an infinite range of the conformal coordinate (equation (1.6)), but can be immediately generalized to different kinds of confining backgrounds where the r -coordinate has a finite endpoint r_{IR} , and to models in which confinement is driven by some higher-dimensional cycles shrinking to zero size, as in the D4-brane model [1, 4] and in the AdS_6 soliton geometry [5].

Moving quark. In the case where the boundary quark is driven at a constant velocity \vec{v} , the salient features of the results described above change little. The trailing string configuration is the same as in the static case, except that it is dragged along the quark with a constant velocity. One important property of the solutions is that the direction of the string is completely independent of the direction of the boundary quark velocity. This is unlike the black hole case, where the minimal action solution has the string trailing opposite to the quark velocity. The power dissipated by dragging the quark is velocity- and angle-dependent, and can be computed from the momentum flow along the string (equation (4.19)):

$$\frac{dE}{dt} = \sigma_c \frac{v \cos \theta}{\sqrt{1 - v^2 \sin^2 \theta}}. \tag{1.17}$$

It is straightforward to see that this is in fact the work needed in order to stretch the string in a direction parametrized by θ by an amount $\Delta X = v\Delta t$ in a time Δt , in the non-relativistic limit where the right hand side of equation (1.17) is linear in the velocity.

As for the static case, we have computed the string fluctuations and the corresponding boundary correlators. The analysis is complicated by the presence of *two* independent spatial directions: the direction of the quark velocity, and that of the string. The quark velocity now couples the transverse and longitudinal fluctuations.

Nevertheless, we are able to decouple the equations, and to show that in the diagonal basis the resulting correlators are essentially a combination of those found for $\vec{v} = 0$, with velocity-dependent coefficients and the appropriate Lorentz factors. The result for $G(\omega; v, \theta, \varphi)$ depends parametrically on two quantities: the boundary quark velocity v and the relation between the velocity direction and the string direction, parametrized by the angles (θ, φ) . The explicit expression of these correlators can be found in equations (5.5) and (C.12)–(C.13).

Consistency and the shadow quark interpretation. We have mentioned above that one way to interpret the confining trailing string solution and the fluctuations around it is in terms of an unobserved “shadow” quark at infinity. Ingoing boundary conditions at infinity correspond to the requirement that no information is available from the shadow quark. As it turns out, it is only with this interpretation in mind that our results for finite v can be made consistent with a (generalized) Langevin treatment of the boundary quark. The reason is that the validity of the Langevin treatment imposes a *consistency condition* to be obeyed between the classical drag force $\langle \mathcal{F} \rangle$, computed as the momentum flow along the string, and the linear response encoded in the retarded correlator. As we show, these two quantities must be related by

$$\frac{d\langle \mathcal{F} \rangle}{dv} = -i \left[\frac{dG^{\parallel}(\omega)}{\omega} \right]_{\omega=0}, \tag{1.18}$$

where G^{\parallel} is the correlator between fluctuations parallel to the quark velocity.

It turns out that equation (1.18) is violated if we compute both sides with a single string solution at fixed angle, i.e. if we use $G(\omega; v, \theta, \varphi)$ in (1.18) (with one exception in the case of the string aligned with the boundary quark velocity, $\theta = 0, \pi$, that we will discuss later). It is also violated if we average uniformly over all possible directions (θ, φ) of the string. This indicates that the stationary states in which the string direction is fixed, or in which all directions have equal weight, do not provide consistent ensembles for the response of a single quark, and that we are forgetting to include some other degrees of freedom.

Indeed, we find that the relation (1.18) is obeyed if we fully abide to the *shadow quark* interpretation of the trailing string: if we assume that the shadow quark has a velocity \vec{w} independent of \vec{v} , and then we average on all the possible \vec{w} with equal weight, the resulting correlator does obey the relation (1.18). This corresponds to assuming that we are in complete ignorance about the state of the shadow quark. In contrast, in the computation of the fixed-direction correlators, the hidden assumption is that that both endpoints (the observed quark and the shadow quark) move with the same velocity vector, so that the string angle is fixed. The same holds if we simply average over all directions with equal weight. Computing the propagators in this fashion introduces a hidden correlation between the shadow quark and the observed quark, which makes the interpretation in terms of the response of a single particle inconsistent.

The resulting correlators obtained by averaging over the shadow quark velocity can be obtained analytically, and take a very simple form in terms of the transverse and longitudinal correlators $G^T(\omega)$ and $G^L(\omega)$ computed for a static quark. Denoting by $\langle G^{\parallel} \rangle_w$ and

$\langle G^\perp \rangle_w$ the shadow-quark velocity averages of the retarded correlators in the directions parallel and transverse to the *observed quark velocity*, we obtain (see equations (5.22)–(5.23)):

$$\langle G^\parallel \rangle_w(\omega, v) = \left[1 - \frac{\tilde{A}(v)}{\gamma^2} \right] G^L(\omega, v) + \tilde{A}(v) G^T(\omega, v), \quad (1.19)$$

$$\langle G^\perp \rangle_w(\omega, v) = \left[1 - \frac{\tilde{A}(v)}{2\gamma^2} \right] G^T(\omega, v) + \frac{\tilde{A}(v)}{2\gamma^4} G^L(\omega, v), \quad (1.20)$$

where $G^{T,L}(\omega, v)$ are simple modifications of the longitudinal and transverse correlators for static quarks, (5.6)–(5.7), and

$$\tilde{A}(v) = \frac{2}{v^3} (\operatorname{arctanh}(v) - v). \quad (1.21)$$

In the static limit $\vec{v} \rightarrow 0$, both expressions (1.19)–(1.20) reduce to the geometric average (1.16), as is intuitively expected.

As we have mentioned, one important exception to the above discussion arises in the case where $\theta = 0, \pi$ i.e. where the string direction is parallel to the quark velocity. In this case, relation (1.18) is verified. This has also a simple interpretation in terms of the shadow quark: it corresponds to a situation where the two quarks are created back to back with opposite velocity and they move apart from each other, becoming infinitely distant in the long-time limit.

Neglecting the backreaction of the interactions on the quark velocities, this corresponds to a situation where no extra assumption has to be made on the motion of the shadow quark, but rather this is fixed by momentum conservation. This way, no extra correlation (apart from a kinematic constraint) is introduced between the two endpoints, and the single-quark treatment is consistent. Of course, in this case the boundary quark correlators are different from the ones obtained by averaging, and are simply given by $G^{L,T}(v, \theta = \pi)$. Whether to use these correlators or the averaged ones depends on the physical situation. For example, the fixed back-to-back direction correlators should presumably be used when one wants to track a heavy quark resulting from a pair-production process in a heavy-ion collision experiment.

Finally, we have numerically computed the finite temperature dressed Langevin correlators in the case of the Improved Holographic QCD model [32], which was the focus of the analysis of [23]. We have defined dressed correlators by subtracting the (\vec{w} -averaged) vacuum contribution, and as expected we observe the correct fall-off at large ω . On the other hand, since the subtracted term has a non-trivial linear behavior at small frequency, this subtraction also renormalizes by a finite amount the transport coefficients computed by the trailing string in the black hole background, as can be seen in equations (6.5)–(6.6) and (6.8)–(6.9).

1.4 Limits of applicability of the holographic Langevin approach and connection with observation

To connect this work with heavy-ion collision observations, other issues must be also taken into account. One of the most important is the effect of a finite mass for the quark,

which limits the range of applicability of our results, and in general of the holographic trailing string approach, to a subregion of parameter space (in terms of temperature, quark momentum and fluctuation frequency). Outside these bounds, which we discuss below, other effects such as flavor backreaction or radiative energy loss start becoming important.

In deriving the results discussed above, we have considered the mass of the quark to be effectively infinite. When a finite quark mass M_q is introduced, the discussion must be modified, and some limitations of the parameter space where our treatment is valid arise. The first two effects described below were discussed in [23] and [25], and concern the trailing string in the black hole background. The third item in the list is specific to the confining case.

1. An upper bound on the quark momentum

We recall that if the quark mass is finite, the endpoint of the string has to be set at a finite, non-zero value of the radial coordinate $r_q \sim 1/M_q$ (which represents the surface where the flavor branes end) rather than $r = 0$. Correspondingly, in the finite temperature regime, the black hole trailing string solution ceases to exist when the world-sheet horizon r_s , which lies outside the black hole horizon for non-zero quark velocity, goes beyond r_q towards the boundary.⁴ Since r_s decreases with increasing quark velocity, we obtain an upper bound p_{\max} (which depends also on the background temperature) on the quark momentum, above which the trailing string approach breaks down. In the ultra-relativistic limit (which is the regime of momenta of interest for heavy-ion collisions) the bound is schematically $\sqrt{\gamma}/T \gtrsim 1/M_q$ where γ is the Lorentz contraction factor of the quark. This can then be translated to a bound in momentum

$$p < p_{\max} \propto M_q^3/T^2. \quad (1.22)$$

Outside this bound, other effects such as radiative energy loss or hard scattering events may dominate over viscous energy loss.

2. An upper bound on the fluctuation frequency

As shown in [25], for finite M_q the holographic computation of the boundary Langevin correlators does not extend to infinite frequency: the boundary on-shell action has the correct form of a quark kinetic term only under the condition $\omega\gamma r_q < 1$. This puts a (velocity-dependent) upper bound ω_{\max} on the fluctuation frequency,

$$\omega < \omega_{\max} \approx M_q/\gamma \quad (1.23)$$

above which the description of the boundary quark dynamics in terms of a Langevin process breaks down.

3. A lower bound on the fluctuation frequency

Finally, for the confining trailing string solution a finite quark mass puts an upper bound on the length of the flux tube (thus the proper length of the trailing string),

⁴As r_s approaches r_q the string solution develops larger and larger bending at that point. The Nambu-Goto approximation therefore breaks down.

$L_{\max} \approx 2\gamma M_q/\sigma_c$. A string longer than L_{\max} is unstable to splitting by the production of a new quark-antiquark pair. For a finite quark mass the shadow quark is not infinitely far, but at most a distance L_{\max} away. Therefore, after a time of order L_{\max} , the signal from the shadow quark will come back, and the infalling boundary condition will be violated. Correspondingly, our treatment holds only for modes of frequency

$$\omega > \omega_{\min} \approx \frac{\sigma_c}{2\gamma M_q}. \tag{1.24}$$

For a finite but large quark mass, the results we have found indicate dynamics which mimics dissipation on a long but finite intermediate time scale. In order to observe the transition between the dissipative-like behavior and the restoration of the non-dissipative regime, one should compute the response by allowing a signal to start at $t = 0$, then propagate to the other end of the string, and then scatter back. In this case we can observe the transition between an ingoing-like solution and a stationary solution of the fluctuation equations setting-in after a time $t \sim L_{\max}$.

In the presence of light quarks, this bound must be modified because one can form heavy-light mesons by breaking the string. The minimal energy required in this case is not given by the light quark mass, but rather by the chiral condensate Λ_χ , which sets the energy for getting a light quark-antiquark pair from the vacuum. Therefore, a more conservative bound is obtained by replacing $2M_q$ by Λ_χ in equation (1.24).

These bounds depend on the quark velocity as an external parameter; the first bound also depends on the temperature of the plasma. The detailed form of these bounds will be given in section 6.3 for the general case, and a numerical analysis is presented in the specific case of the IHQCD model [36]. For example, in the specific IHQCD model which we analysed numerically, for the case of an ultra-relativistic charm quark (rest mass $M_q \simeq 1.4 \text{ GeV}$) propagating through a plasma at $T \sim 3T_c$, the frequency and momentum range of applicability of our results are:

$$6 \text{ MeV} \lesssim \omega \lesssim 2 \text{ GeV}, \quad p \lesssim 270 \text{ GeV}, \tag{1.25}$$

The frequency range corresponds to a minimal time interval length $\Delta t \approx 1/\omega_{\max} = 0.09 \text{ fm}$, and to a maximal duration $\Delta t \approx 1/\omega_{\min} = 31 \text{ fm}$. The latter is much longer than both the relaxation time for the charm at these temperatures, and of the time span of existence of the QGP fireball.

We leave for future work the computation of the full correlators for finite quark mass, as well as the practical application of these results to realistic situations and comparison with experimental results.

1.5 Paper structure

This work is organized as follows. In section 2 we describe the general setup, compute the trailing string solution for a static boundary quark, discuss the linearized fluctuation equations around the classical solution, and obtain the associated boundary retarded correlators.

In section 3 we compute the fluctuation-dissipation relation between the retarded and symmetrized correlator of the trailing string fluctuations, and show that it corresponds to zero temperature.

In section 4 we discuss the confining trailing string in the case of a uniformly moving quark, and compute the corresponding classical solution and fluctuation equations.

In section 5 we compute the boundary retarded correlators for the uniformly moving quark, introduce different ways of dealing with the angle dependence, and analyze the consistency with the single-quark response theory.

Finally, in section 6 we carry out the dressing procedure of the black hole trailing string correlators in the specific case of Improved Holographic QCD, and we discuss the range of applicability of our results.

Several technical details are presented in the appendices. Appendix A discusses a generalization to an arbitrary direction of the trailing string solution in the black hole background.

Appendix B presents the details of the derivation of the confining trailing string classical solution and fluctuations.

In appendix C we give the detailed calculation of the boundary correlators for finite velocity and arbitrary string orientation.

Appendix D contains the details of the averaging procedure over the shadow quark velocity.

In appendix E we discuss the effect of a certain antisymmetric term in the quadratic action, and show that it does not contribute to the correlators.

Appendix F presents a review of the field theory derivation of the Generalized Langevin equation, as well as a proof of the Ward identity that relates the classical drag force and the retarded correlator at zero-frequency.

2 Static trailing string in confining theories

We consider a generic five-dimensional model admitting asymptotically AdS black-hole solutions, where the bulk metric *in the string frame* takes the general form

$$ds^2 = b^2(r) \left(-f(r)dt^2 + dx_i dx^i + \frac{dr^2}{f(r)} \right), \tag{2.1}$$

with $b(r) \rightarrow \ell/r$ and $f(r) \rightarrow 1$ as $r \rightarrow 0$ (near boundary region). A concrete realization may be obtained in five dimensions in terms of a class of Einstein-dilaton theories [8, 9, 35]. Among these theories, the holographic duals of theories that are confining at zero temperature, display a first-order phase transition at a critical temperature T_c between the confining and the non-confining phase. The solutions that minimize the free energy above and below T_c have the following properties:

- **T < T_c**

In this case $f(r) \equiv 1$. The scale factor $b(r)$ admits an absolute minimum at $r = r_m$, close to which we introduce the following notation:

$$b(r) = b_m + \frac{1}{2}b''_m(r_m - r)^2 + \dots \quad r \simeq r_m, \tag{2.2}$$

where $b_m = b(r_m)$ and $b_m'' = b''(r_m)$ are two positive constants, [8, 9]. The presence of a minimum in the string frame scale factor is what causes the Wilson loop to exhibit an area law at large separations. At the same time, as it was shown in [34, 35], this feature of the vacuum scale factor is a necessary and sufficient condition to have a first order deconfinement phase transition at $T = T_c$.

To be specific, we take r to be defined in the range $(0, +\infty)$, although this hypothesis can be relaxed: confining backgrounds exist in which (2.2) is realized and in addition $b(r) \rightarrow +\infty$ as a power-law around some finite $r_{IR} > r_m$ [9]. All our results immediately generalize to these cases.

- **T > T_c**

The bulk solution is a black hole: $f(r)$ is a non-trivial function, vanishing at some $r_h > 0$, with $b(r_h)$ staying finite:

$$f(r) \sim 4\pi T(r_h - r) + \dots, \quad b(r) = b_h + b_h'(r - r_h) + \dots \quad r \simeq r_h. \quad (2.3)$$

We assume for simplicity that $b(r)$ is monotonically decreasing in the whole range $0 < r < r_h$.⁵

2.1 The static trailing string solution

Our goal is to analyze the holographic dual description of a probe quark in the boundary theory. We start with the static case, which is technically simpler but already contains all the qualitative and conceptual features of the general case of a moving quark, which will be discussed in the section 4. Although technically a single quark in a confining vacuum is forbidden, we can still introduce it and treat it as a probe, keeping in mind that we will encounter an infinite energy contribution from the flux tube associated to it. This will be reflected nicely in the features of the trailing string solution in the holographic dual description. In other words, we are considering a probe quark as an infinitely massive object.

The fact that the quark is non dynamical means that its mass is much larger than the temperature and the confining scale. The gravity dual configuration is a trailing string stretching from the boundary at $r = 0$ into the interior [16]. The trailing string profile is described in the static gauge by the embedding fields $X^i(r, t)$. It is found by minimizing the Nambu-Goto action, $S_{NG} = -\frac{1}{2\pi\ell_s^2} \int \sqrt{-\det(g_{ind})}$, subject to boundary conditions $X^i(r = 0, t) = X_q^i(t)$ specified by the motion of the boundary quark. In the static case, this simply means that the endpoint of the string is fixed at the origin, $\vec{X}(r = 0, t) = 0$.

In the static gauge, with the background metric is specified by (2.1), the static trailing string profile ansatz is

$$X_i = \xi_i(r), \quad (2.4)$$

⁵For the “big” black hole that dominates the ensemble, this assumption is verified, and although we could not find a general proof this seems always to be the case in all models we have investigated. For the subleading small black hole branch, the scale factor may have a minimum for some $T > T_c$, since in this branch it eventually has to reduce to the zero-temperature scale factor as $r_h \rightarrow \infty$. This may have lead to interesting phase transition between different string kinds of trailing string solutions, but we will not explore this case here.

with the boundary condition $\xi_i(0) = 0$. The induced world-sheet metric and Nambu-Goto action are:

$$ds^2 = b^2(r) \left[-f(r)dt + \left(\frac{1}{f(r)} + |\vec{\xi}'|^2 \right) dr^2 \right], \quad (2.5)$$

$$S_{NG} = -\frac{1}{2\pi\ell_s^2} \int dr dt b^2(r) \sqrt{1 + f(r)|\vec{\xi}'|^2}, \quad (2.6)$$

where ℓ_s is the string length. Since the action only depends on ξ'_i , there are three independent integration constants,

$$C_i \equiv \frac{f(r)b^2(r)\xi'_i}{\sqrt{1 + f(r)|\vec{\xi}'|^2}}. \quad (2.7)$$

The equation for the profile can therefore be reduced to a first order equation:

$$\xi'_i(r) = \frac{C_i}{\sqrt{f(r)}\sqrt{b^4(r)f(r) - C^2}}, \quad C \equiv |\vec{C}|. \quad (2.8)$$

In the black hole case, the denominator vanishes at $r_h = 0$, and regularity fixes $C = 0$, giving a trivial constant profile $\xi(r) = 0$, showed in figure 3a (see appendix A for a derivation of this result).

We now concentrate on the $T < T_c$ geometry, and set $f(r) \equiv 1$. Equation (2.8) becomes:

$$\xi'_i(r) = \frac{C_i}{\sqrt{b^4(r) - C^2}}. \quad (2.9)$$

As described above, in the confining case⁶ $b(r)$ has a global minimum $b_m > 0$ at $r = r_m$ and regularity of (2.9) allows C to be any constant in the range:

$$0 \leq C \leq b_m^2. \quad (2.10)$$

Moreover, for any non-zero value of C in the allowed range, there is a 2-parameter degeneracy in the choice of the angular direction of the vector C_i . Rotational invariance (including boundary conditions) guarantees that the properties of the solution depend only on the modulus C and not on the direction, so we can choose a basis such that the profile takes the form

$$\vec{X}(r) = (\xi(r), 0, 0), \quad \vec{C} = (C, 0, 0), \quad (2.11)$$

and obtain all other solutions by a simple rotation.

We will now discuss the features of the solution as a function of C in the range (2.10). This will eventually lead us to select one value which minimizes the action. For definiteness, we will assume that, as $r \rightarrow \infty$, the scale factor behaves as a power law:⁷

$$b(r) \sim r^a, \quad r \rightarrow \infty, \quad a > 0. \quad (2.12)$$

⁶In the non-confining case, $b(r)$ is monotonic, and $b(r) \rightarrow 0$ in the IR. Then, reality of equation (2.9) demands again $C = 0$, and the only solution is the straight string that extends all the way to $r = +\infty$. This case was the one analyzed in [25].

⁷In the confining geometries with a finite range of the r -coordinate, the string frame scale factor behaves in the IR $b(r) \sim (r_{IR} - r)^{-\alpha}$ with $\alpha > 0$, and a similar discussion to the one presented here applies.

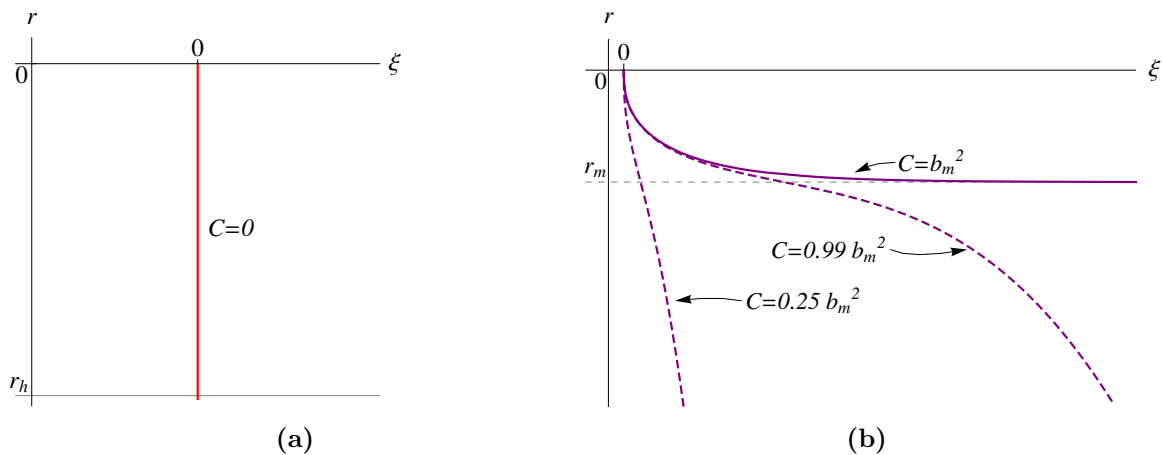


Figure 3. In figure 3a we show the profile for a static string ξ in a black hole: a straight line with $C = 0$. In figure 3b we consider a static string at zero temperature, where the profile is characterized by the parameter C with $0 \leq C \leq b_m^2$. For $0 < C < b_m^2$ the string has the shape of a kink and as C approaches zero the string tends to a straight line. For $C = b_m^2$ the string asymptotes above to $r = r_m$.

For all C in (2.10), strictly less than b_m^2 , the denominator in (2.9) is nowhere vanishing and the string extends to $r \rightarrow \infty$, with $\xi' \sim Cr^{-2a}$ (this leaves a finite $\xi(\infty)$ for $a > 1/2$ and note that $a > 0$ for confining backgrounds). In the critical case, $C = b_m^2$, on the other hand, using the expansion (2.2) close to r_m we find,

$$C = b_m^2 \quad \Rightarrow \quad \xi' \rightarrow \frac{1}{\sqrt{2b_m''/b_m}(r_m - r)}, \quad r \rightarrow r_m^- \tag{2.13}$$

Therefore ξ diverges logarithmically at r_m : this means that the string becomes more and more parallel to the X direction and approaches r_m from below, but never goes beyond it. The solutions corresponding to non-zero C are shown in figure 3b.

The induced world-sheet metric (2.5) reads, in the critical case:

$$ds^2 = b^2(r) \left[-dt^2 + \frac{b^4 dr^2}{(b^4 - b_m^4)} \right] \tag{2.14}$$

Close to the boundary ($r \rightarrow 0$), $b(r) \sim \ell/r$ and (2.14) is asymptotically AdS_2 . As $r \rightarrow r_m$ the metric becomes approximately:

$$ds^2 \rightarrow b_m^2 \left[-dt^2 + \frac{b_m dr^2}{2b_m''(r - r_m)^2} \right] \tag{2.15}$$

Changing variables to

$$r - r_m = -\exp(-z\sqrt{2b_m''/b_m}), \tag{2.16}$$

this becomes the flat 2-dimensional metric at $z \rightarrow +\infty$

$$ds^2 \rightarrow b_m^2 [-dt^2 + dz^2], \quad z \rightarrow \infty. \tag{2.17}$$

Indeed, the scalar curvature of this metric vanishes near $r = r_m$:

$$\mathcal{R} = -\frac{2}{b^8} [(3b_m^4 - b^4)b'^2 + (b^4 - b_m^4)bb''] \rightarrow -\frac{8(b'')^2}{b_m^4}(r - r_m)^2 + \dots \quad (2.18)$$

The preferred value of C is the one that minimizes the Euclidean Action. Thus, we now evaluate the NG action on these solutions, as a function of C . From equation (2.6), the Euclidean action is:

$$S[C] = \frac{1}{2\pi\ell_s^2} \int d\tau \int_{\epsilon}^{r_{IR}} dr b^2(r) Z(r), \quad Z(r) \equiv \frac{b^2}{\sqrt{b^4 - C^2}}, \quad (2.19)$$

where ϵ is the usual UV cutoff and r_{IR} is the endpoint of the trailing string in the IR, i.e. $r_{IR} = +\infty$ for $C \neq b_m^2$, and $r_{IR} = r_m$ for $C = b_m^2$. The action (per unit euclidean time τ) is always divergent in the IR due to the fact that the string has infinite proper length.⁸ In fact, we observe immediately from (2.19) that,

$$S[C] \sim \begin{cases} r^{2a+1} & r \rightarrow \infty & C < b_m^2 \\ z & z \rightarrow \infty & C = b_m^2 \end{cases} \quad (2.20)$$

In the equation above, we used different coordinates r and z merely for convenience. Shortly everything will be re-expressed in terms of the coordinate-independent proper length L .

Both on-shell actions in equation (2.20) diverge. In order to compare actions at different values of C it is therefore necessary to determine their behavior in terms of the proper length L . We can define $L = \int \sqrt{g_{rr}} dr$, and again we have two distinct behaviors:

$$L \sim \begin{cases} r^{a+1} & r \rightarrow \infty & C < b_m^2 \\ z & z \rightarrow \infty & C = b_m^2 \end{cases} \quad (2.21)$$

The proper length is also divergent, but we can now evaluate the string action from (2.20)–(2.21) in terms of L as

$$S \sim \begin{cases} L^{\frac{2a+1}{a+1}} & C < b_m^2 \\ L & C = b_m^2 \end{cases}, \quad \frac{S[C = b_m^2]}{S[C]} \sim L^{-\frac{a}{a+1}} \rightarrow 0 \text{ as } L \rightarrow \infty, \quad (2.22)$$

This estimate shows that the solution corresponding to the critical value $C = b_m^2$ is the one that minimizes the Euclidean action, since a is non negative.

To summarize, we have found that a single probe quark at rest in a confining vacuum is dual to a infinitely long string, which asymptotically stretches along one of the spatial directions, at a fixed radius r_m in the bulk. We refer to the surface $r = r_m$ as *confining horizon*. The energy per unit length, in the asymptotic region, is given by:

$$\sigma_c = \frac{b_m^2}{2\pi\ell_s^2}, \quad (2.23)$$

⁸On the other hand, in the black hole case, $r_{IR} = r_h$ and the action per unit time is finite due to the redshift factor along the time direction.

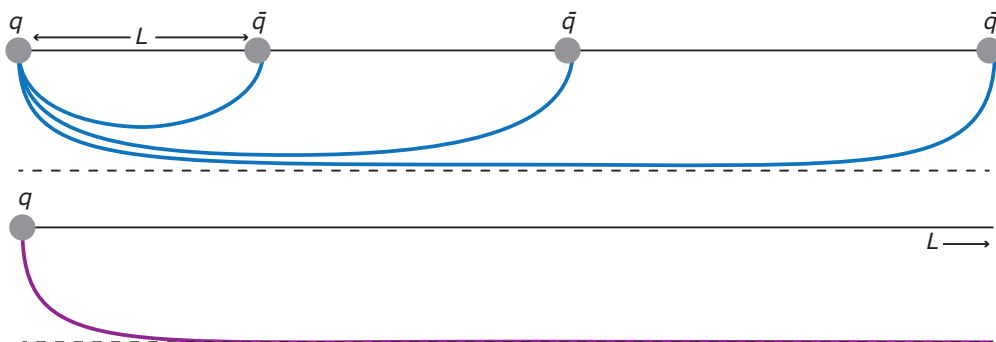


Figure 4. The string connecting a quark-antiquark pair at zero temperature is illustrated on top, as the distance between the quark and the antiquarks L increases. The bottom figure shows the $L \rightarrow \infty$ limit, where the string has the profile of the confining trailing string with $C = b_m^2$.

which is exactly the confining string tension of the boundary theory [9]. This has a clear interpretation from the boundary theory perspective: in a confining vacuum, a colored object such as a quark comes with an infinitely long color flux tube, whose tension is σ_c , and we have found the holographic realization of this configuration. In fact, this will be confirmed later by computing the drag force that the string exerts on the quark: we will find in section 5.3 a constant force exactly equal to (2.23), i.e. the force is the same as that exerted by a string of constant tension σ_c attached to the quark.

We can think about this configuration in another way, which will be useful later: the stretched string is *half* of the flux tube configuration that connects a $q\bar{q}$ pair separated by a distance L on the boundary, when we send the antiquark at infinite distance away (therefore remaining with a single boundary endpoint), as shown schematically in figure 4. In this sense, the configuration we have found is the $L \rightarrow \infty$ limit of the well-known holographic Wilson-line configuration discussed in [28–30].

The string configuration picks up a direction in the boundary theory (the direction of the flux tube), breaking the full rotational invariance to the $SO(2)$ which leaves the string fixed. This breaking is spontaneous from the point of view of the boundary theory and is trivially reflected in the bulk theory, since the direction of the confining trailing string is fixed (it does not depend on r).

2.2 Static trailing string fluctuations

The classical string configuration can be seen as responsible for the classical force acting on the quark. On the other hand, to obtain the correlators governing the boundary Langevin dynamics of the probe quark, as in equation (1.2), one must look at fluctuations around the trailing string. These are the holographic dual bulk fields to the boundary operator whose correlations functions enter equation (1.2).

We now look at the fluctuations equations around the confining trailing string found in the previous subsection. We perturb the classical string embedding by writing

$$X^i = \xi^i(r) + \delta X^i(t, r), \tag{2.24}$$

The fluctuation equations can be derived from the expansion of the worldsheet action up to second order in δX^i . The action and the corresponding field equations are given by

$$S^{(2)} = -\frac{1}{2\pi\ell_s} \int d^2\sigma \mathcal{G}_{ij}^{ab} \partial_a \delta X^i \partial_b \delta X^j, \quad (2.25)$$

$$\partial_a \left(\mathcal{G}_{ij}^{ab} \partial_b \delta X^j \right) = 0, \quad (2.26)$$

where $\sigma^a = (t, r)$. In the static case we are considering, the kinetic tensor is diagonal, with

$$\mathcal{G}_{11} = \begin{pmatrix} -R & 0 \\ 0 & R^3/b^4 \end{pmatrix}, \quad \mathcal{G}_{22} = \mathcal{G}_{33} = \begin{pmatrix} -b^4/R & 0 \\ 0 & R \end{pmatrix}, \quad (2.27)$$

where we have defined the function

$$R(r) = \sqrt{b^4(r) - C^2}. \quad (2.28)$$

From equation (2.27) we observe that we have different kinetic terms for the longitudinal and transverse fluctuations (with respect to the string direction) and that the field equations are decoupled. We will denote δX^1 and $\delta X^{2,3}$ by δX^L and δX^T , respectively.

Fourier-transforming with respect to time, we have:

$$\partial_r [R \partial_r \delta X^T] + \omega^2 \frac{b^4}{R} \delta X^T = 0, \quad (2.29)$$

$$\partial_r \left[\frac{R^3}{b^4} \partial_r \delta X^L \right] + \omega^2 R \delta X^L = 0. \quad (2.30)$$

Close to the critical radius r_m , the coefficients have the form:

$$b(r) \simeq b_m, \quad R(r) \simeq b_m^2 (4\pi T_m) (r_m - r), \quad (2.31)$$

where we have introduced for convenience the quantity

$$T_m \equiv \frac{1}{4\pi} \sqrt{\frac{2b_m''}{b_m}}. \quad (2.32)$$

The near-horizon fluctuation equations become

$$(\delta X^T)'' - \frac{1}{|r - r_m|} (\delta X^T)' + \frac{1}{|r - r_m|^2} \frac{\omega^2}{(4\pi T_m)^2} \delta X^T = 0, \quad (2.33)$$

$$(\delta X^L)'' - \frac{3}{|r - r_m|} (\delta X^L)' + \frac{1}{|r - r_m|^2} \frac{\omega^2}{(4\pi T_m)^2} \delta X^L = 0. \quad (2.34)$$

For the transverse modes the solutions are ingoing and outgoing waves

$$\delta X^T \simeq C_T |r - r_m|^{\pm i\omega/(4\pi T_m)}. \quad (2.35)$$

The situation is different for the longitudinal mode: the solution behaves as

$$\delta X^L \simeq C_L |r - r_m|^{-1 \pm \sqrt{1 - \omega^2/(4\pi T_m)^2}}. \quad (2.36)$$

Hence, the longitudinal mode is real for $|\omega| \leq 4\pi T_m$.

It is instructive to compare equations (2.33)–(2.33) with those obtained for the trailing string in a black-hole background i.e. when the metric is given by equation (2.1) with a non-trivial $f(r)$. In that case, as we have seen, the trailing string has a trivial profile $\xi(r) \equiv 0$, it crosses the bulk horizon at $r = r_h$, and the induced metric is a 2-dimensional black hole with the same temperature T_h as the background:

$$ds_{bh}^2 = b^2(r) (-f(r)dt^2 + f(r)^{-1}dr^2), \quad f(r_h) = 0, \quad f'(r_h) = -4\pi T_h. \quad (2.37)$$

In this case, all fluctuations equations close to the horizon take the form [23]

$$(\delta X^i)'' - \frac{1}{|r - r_h|}(\delta X^i)' + \frac{1}{|r - r_h|^2} \frac{\omega^2}{(4\pi T_h)^2} \delta X^i. \quad (2.38)$$

Therefore, for the transverse modes close to r_m , equation (2.33) looks the same as in the black hole case close to the horizon, with an “effective” temperature defined by T_m , determined by the features that govern the confinement scale (i.e. b_m and b'_m).

Notice however that the world-sheet metric is *not* a black hole, since the coefficient of dt^2 is nowhere vanishing. Moreover, we have started with a bulk solution at zero temperature. To understand whether T_m can actually be interpreted as a temperature one has to ask what is the ensemble (the density matrix) of the fluctuations. We will see in section 3 that the fluctuations correlators obey a *zero-temperature* fluctuation-dissipation relation, indicating that the modes are actually in the vacuum, and not in a thermal state as is the case for a black hole. This issue cannot be decided solely by looking at the classical fluctuation equations, since the worldsheet induced metric is conformal to a black hole metric and the field equations are classically conformally invariant. However, at the quantum level the 2D conformal anomaly breaks the degeneracy between conformally equivalent metrics, and as we will see in section 3 the fact that the world-sheet induced metric is not that of a black hole will determine the result that the fluctuations are in the $T = 0$ vacuum.

Nevertheless, the fact that the near-horizon equation for transverse fluctuations is the same as for a black hole with temperature T_m has some important consequences. Namely, the long wavelength modes show a dissipative behavior in the vacuum: as we will see in subsection 2.4, they are subject to a viscous friction which results from the dynamics of confinement.

2.3 Schrödinger analysis

Before moving to the computation of the boundary correlators, it is convenient to gain an intuitive picture of the mode solutions and their normalization properties. For this purpose, it is useful to change variables and coordinates to an analogue Schrödinger description, in which normalizability is defined simply by square-summability of the wave-function.

In general, starting from an action for the mode with frequency ω , of the form

$$S = - \int dr \left[A(r)|X'(r)|^2 - B(r)\omega^2|X(r)|^2 \right], \quad (2.39)$$

we can change variables as follows:

$$dz = \sqrt{\frac{B(r)}{A(r)}} dr, \quad \Psi = [A(r)B(r)]^{1/4} X. \quad (2.40)$$

Then, the action (2.39) takes the form of a canonical Schrödinger action with energy ω^2 ,

$$S = - \int dz \left[|\partial_z \Psi|^2 + (V(z) - \omega^2) |\Psi|^2 \right], \quad V(z) = -(AB)^{1/4} \frac{d^2}{dz^2} (AB)^{-1/4}, \quad (2.41)$$

which leads to the standard equation and normalization condition:

$$- \frac{d^2 \Psi}{dz^2} + V(z) \Psi = \omega^2 \Psi, \quad \int dz |\Psi|^2 = 1. \quad (2.42)$$

Once reduced in this form, we can use the quantum mechanical intuition coming from the form of the potential to have a qualitative understanding of the spectrum.

Transverse modes. For the fluctuations corresponding to the 22 and 33 components of \mathcal{G} in (2.26) we have $A(r) = R$, $B(r) = b^4/R$. Applying the procedure described above, and the asymptotics (2.31) we find that the variable z is $z \sim -\log(r_m - r)$ close to r_m and $z \sim r$ in the UV region $r \rightarrow 0$. Therefore, the Schrödinger problem is on the half line. The potential is $b^{-1}(d^2b/dz^2)$. It approximates $1/z^2$ in the UV, and vanishes exponentially as $z \rightarrow \infty$.

The spectrum of transverse modes is continuous for $\omega > 0$ and at infinity the solutions have oscillatory plane-wave behavior for all frequencies.

Longitudinal modes. For longitudinal fluctuations, we have to look at the 11 component of \mathcal{G} in (2.26). This leads to $A(r) = R^3/b^4$, $B(r) = R$. The ratio B/A is unchanged, so the coordinate z is the same as for the transverse modes. On the other hand, the potential is now $(R/b)(d^2/dz^2)(b/R)$. It has the same $1/z^2$ behavior in the UV, but it goes to a constant at infinity,

$$V(z) \sim (4\pi T_m)^2, \quad z \rightarrow \infty, \quad (2.43)$$

with T_m defined in equation (2.32). This implies that the spectrum of longitudinal modes is continuous but gaped, and it starts at frequency $\omega_{gap} = 4\pi T_m$. Below this frequency there are no normalizable modes, whereas for $\omega > \omega_{gap}$ the modes behave as plane waves at infinity.

As a concrete example, we show in figure 5 the Schrödinger potentials for transverse and longitudinal fluctuations, computed numerically in the case of the IHQCD model [9, 36].

2.4 Boundary conditions and field theory correlators

Having derived the equations governing the fluctuations of the trailing string, we can now compute the corresponding retarded propagators in the boundary field theory in terms of solutions with appropriate boundary conditions. The boundary propagator is the correlation function of the boundary operator dual to the trailing string fluctuations, i.e. the force operator coupling the probe quark to the dual field theory [16]. This correlator is the same one that enters the Langevin-like equation which can be used to describe the effective dissipative dynamics of the quark after the field theory is “integrated out”. More explicitly, the fluctuations of the trailing string compute the Green’s functions of the force operators

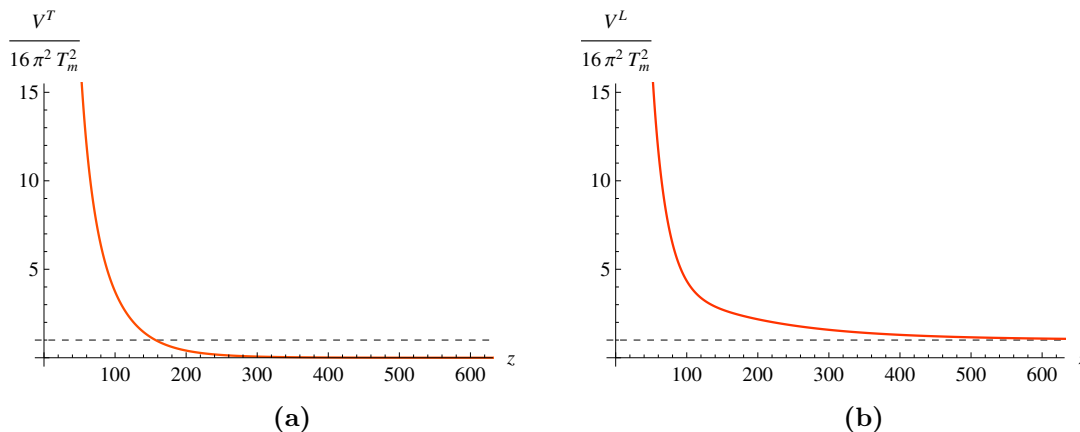


Figure 5. The Schrödinger potential for the transverse and longitudinal modes, normalized by the factor $(4\pi T_m)^2$ is shown in 5a and 5b respectively, as a function of the Schrödinger coordinate z . While for transverse modes the potential exponentially vanishes, it asymptotes to a constant determined by T_m , for longitudinal modes.

$\mathcal{F}(t)$ coupling the probe quark to the medium dual to the bulk theory, (see appendix F for more details):

$$G^{ij}(t) = -i\theta(t)\langle 0 | [\mathcal{F}^i(t), \mathcal{F}^j(0)] | 0 \rangle. \tag{2.44}$$

Here, $G^{ij}(t)$ is the *retarded* Green’s function, and \mathcal{F} is the field theory operator coupling to the quark position via the boundary coupling:

$$S_{bdr} = \int dt \delta X^i(t, r=0) \mathcal{F}^i(t). \tag{2.45}$$

Of particular significance is the imaginary part of the retarded Green’s function, which contains no UV divergences (and is therefore scheme-independent) and from which the diffusion coefficients can be extracted. Explicitly, the zero-frequency limit of $\text{Im } G(\omega)$ gives the friction coefficient η appearing in the long-time limit of the Langevin equation:

$$\text{Im } G^{ij}(\omega) \sim -\omega\eta^{ij} + O(\omega^3). \tag{2.46}$$

According to the standard AdS/CFT prescription, given a quadratic bulk action of the form (2.25), the boundary retarded correlator in Fourier space is given by

$$G^{ij}(\omega) = -\frac{1}{2\pi\ell_s^2} \left[F^{il}(-\omega, r) \mathcal{G}_{lk}^{rr} \partial_r F^{kj}(\omega, r) \right]_{r=0}, \tag{2.47}$$

where we have chosen the worldsheet coordinates such that \mathcal{G}^{ab} is diagonal. In these expressions, $F^{kj}(\omega, r)$ are the *bulk-to-boundary retarded propagators*, i.e. solutions of (2.26) satisfying unit normalization at $r = 0$,

$$F^{kj}(\omega, r) = \delta^{kj} \tag{2.48}$$

and, as $r \rightarrow r_m$, *infalling* boundary conditions $F \sim (r_m - r)^{-i(\omega/4\pi T_m)}$, (in the case of complex wave-like solutions), or *normalizable* boundary condition (in the case of real exponential solutions).

2.4.1 Infalling modes and the *shadow quark*

Before we present the calculation, we comment on the meaning of our choice of infalling boundary conditions at the confining horizon for oscillating modes. As we argued before, the configuration we are considering — a long string stretching from a single boundary quark — can be thought of as the limit of (the gravity dual of) a quark-antiquark pair connected by a QCD flux tube, when we send the antiquark an infinite distance away. This is consistent with the case of an external heavy quark of infinite mass, when the string can be stretched arbitrarily far without breaking. In our case, however, we are interested in the dynamics of a *single* quark, and in particular in the response of the medium around the quark to a fluctuation of its position, independently of the antiquark at infinity.

The infalling condition is the natural one in a black hole background, or more generally in the presence of a horizon. However, in our case $r \rightarrow r_m$ is not a horizon, but rather the spatial infinity of an asymptotically-flat region. So what is the physical meaning of this condition in this case?

As the confining trailing string can be thought, in the boundary theory, as the limit of a color flux tube connecting the quark to an infinitely far antiquark, *Infalling conditions at r_m correspond to the requirement that no information comes from the antiquark at infinity.* This means that the correlator we are computing is the one that describes the response of the system to a perturbation of the quark at $X = 0$, at times shorter than the time it takes for the perturbation to reach the faraway quark, and for it to send information back along the string. The choice of infalling boundary condition also means that no information is coming from infinity before the perturbation is turned on, in other words the correlator is a retarded one.

We are setting up the system so that it is fully specified by a single boundary condition and that we can ignore the response coming from the other quark. This response would manifest itself precisely in a signal that comes back from the “end” of the string at infinity. In this situation, choosing ingoing boundary conditions means that we are not allowing the other quark at infinity to react and send a signal back along the string.⁹ This interpretation, with the presence of an unobserved *shadow quark* at infinity, will turn out to be very important for consistency when we compute the correlators of the fluctuations for a moving quark, in section 5.

Finally, this argument can also be justified from the fact that the “retarded” prescription $\omega \rightarrow \omega + i\epsilon$ makes the fluctuation vanish as $r \rightarrow r_m$. In some sense, this boundary condition follows from a regularity requirement.

2.4.2 Transverse and longitudinal propagators

In the static case we are discussing here, the longitudinal and transverse fluctuation equations are decoupled, and the matrix \mathcal{G}^{ij} (the bulk-to-boundary correlator) is diagonal. This

⁹For a finite string length this can of course be true only for intermediate time scales, and eventually the fluctuations will become a superposition of incoming and outgoing modes. This will effectively kill all dissipation effects for frequencies smaller than the inverse length of the string, as will be discussed later.

leads to distinct retarded Green functions in the longitudinal and transverse sectors:

$$G^T(\omega) = -\frac{1}{2\pi\ell_s^2} [R(r)\partial_r F_0^T(\omega, r)]_{r=0}, \quad (2.49)$$

$$G^L(\omega) = -\frac{1}{2\pi\ell_s^2} \left[\frac{R^3(r)}{b^4(r)} \partial_r F_0^L(\omega, r) \right]_{r=0}, \quad (2.50)$$

where $F_0^T(r, \omega)$ and $F_0^L(r, \omega)$ are the solutions of (2.29) and (2.30) respectively, satisfying the condition (2.48) at the boundary and the appropriate boundary conditions at r_m . Below, we analyze separately the fluctuation spectrum for the two kind of modes.

Transverse modes. Selecting the infalling mode, the near-horizon form of the solution is:

$$F_0^T(\omega, r) \sim C_T(\omega)(r_m - r)^{-i\omega/(4\pi T_m)} \quad (2.51)$$

where $C_T(\omega)$ is an integration constant which is eventually fixed by the UV normalization.

Since the imaginary part of the quantity in square brackets in (2.47) is a conserved flux (see e.g. [23]), the imaginary part of the retarded Green's function can be obtained by evaluating equation (2.51) at r_m , rather than $r = 0$, and using

$$\frac{1}{2\pi\ell_s^2} R(r) \simeq \frac{b_m^2}{2\pi\ell_s^2} 4\pi T_m (r_m - r), \quad r \simeq r_m. \quad (2.52)$$

This leads to:

$$\text{Im } G^T(\omega) = -\omega |C_T(\omega)|^2 \frac{b_m^2}{2\pi\ell_s^2}. \quad (2.53)$$

Longitudinal modes. In this case, the solutions in the IR are given by equation (2.36) and one has to separates two regimes:

- For $\omega > 4\pi T_m$ the solutions are complex, and the infalling boundary conditions select the one of the form

$$\hat{F}_0^L(\omega, r) \sim C_L(\omega)(r_m - r)^{-1-i\sqrt{\omega^2/(4\pi T_m)^2-1}}, \quad r \simeq r_m. \quad (2.54)$$

- For $0 < \omega < 4\pi T_m$ on the other hand, the solutions are real and the correct choice is normalizability¹⁰ at r_m :

$$\hat{F}_0^L(\omega, r) \sim C_L(\omega)(r_m - r)^{-1+\sqrt{1-\omega^2/(4\pi T_m)^2}}, \quad r \simeq r_m. \quad (2.55)$$

Clearly, the retarded Green's function is *real* at small frequency, and the fluctuations along the string direction exhibit a gap equal to $4\pi T_m$:

$$\text{Im } G^L(\omega) = \begin{cases} -|C_L(\omega)|^2 \sqrt{\frac{\omega^2}{(4\pi T_m)^2} - 1} \frac{(4\pi)^{3/2} T_m^3}{2\pi\ell_s^2 b_m^{5/2}}, & \omega > 4\pi T_m, \\ 0, & \omega < 4\pi T_m. \end{cases} \quad (2.56)$$

¹⁰Since we are computing the propagator, rather than the normal modes, we only impose normalizability at r_m , not at $r = 0$, so this is not incompatible with the fact that, as stated in the previous section, there are no *fully* normalizable modes in this frequency range.

Below we separately analyze the low-frequency and high-frequency limit of $\text{Im } G(\omega)$: from the former one can read-off the viscous friction governing the long-time behavior; the latter governs the short-time dynamics and it is relevant for subtracting short-time singularities [25].

2.4.3 Diffusion constants

We define the viscous coefficients from the low-frequency limit of the correlators,

$$G^T \simeq -i\eta^T\omega + O(\omega^2), \quad G^L \simeq -i\eta^L\omega + O(\omega^2). \quad (2.57)$$

At small frequencies, $\text{Im } G^L$ is identically zero, whereas in the transverse sector the standard procedure of [23] matches the UV normalization $F^T(\omega, 0) = 1$ with the near-horizon behavior (2.51) and fixes $C_T(0) = 1$. This gives

$$\eta^L = 0, \quad \eta^T = \frac{b_m^2}{2\pi\ell_s^2} = \sigma_c. \quad (2.58)$$

While the longitudinal fluctuations are subject to a conservative force, the transverse fluctuations feel a viscous friction force equal to the confining string tension σ_c .

2.4.4 High frequency limit

At large ω , i.e. for $\omega \gg 4\pi T_m$, one can repeat step by step the WKB analysis used in [23] to solve equations (2.29)–(2.30). These equations have the same form as those studied in [23] and, as was shown in the aforementioned paper, the high-frequency result only depends on the UV asymptotic of the metric near $r = 0$. In particular, if $b(r) \sim \ell/r$ for small r , we obtain the universal high-frequency behavior

$$\text{Im } G^{L,T}(\omega) \simeq -\frac{\ell^2}{2\pi\ell_s^2}\omega^3 + \dots, \quad (2.59)$$

while the IR properties, such as temperature or the confining IR dynamics (in our case, for instance, the terms contributions from T_m), give only subleading corrections suppressed by $1/\omega^4$.

3 Fluctuation-dissipation relations

Given the field equations for δX^i derived in the previous sections, we would like to understand what kind of density matrix describes the quantum state of the fluctuations. In particular, we would like to understand the role played by the parameter T_m introduced in equation (2.32), and whether this can be truly regarded as an effective temperature. As we will see below, this is not the case: the fluctuations should be considered as in their vacuum state, and not in a thermal ensemble.

One way to clarify this issue is to find the fluctuation-dissipation relation between the retarded and the symmetric correlator in the bulk. This will reveal what is the statistical ensemble that describes the string fluctuations and as a consequence, the boundary quark

fluctuations. Before presenting the explicit calculation, we give an argument based on the geometric structure of the trailing string solution, which already indicates that the vacuum state of the fluctuations is not a thermally excited state from the point of view of a boundary observer.

3.1 The trailing string geometry

One way to understand whether the system is in a thermal state, is to pass to Euclidean signature and to check whether there is a regularity condition that forces Euclidean time to be compactified on a circle. For example, this is the case if the induced world-sheet metric is a (Euclidean) 2-dimensional black hole,

$$ds_{bh}^2 = b^2(r) \left[f(r) d\tau^2 + \frac{dr^2}{f(r)} \right] \tag{3.1}$$

with $b(r) \rightarrow b_h$, $f(r) \rightarrow 4\pi T_h(r_h - r)$ as $r \rightarrow r_h$. In this metric, the proper distance $d(r_0, r_h)$ from any point $r = r_0$ to the horizon $r = r_h$ is finite,

$$d(r_0, r_h) = \int_{r_0}^{r_h} dr \frac{b(r)}{\sqrt{f(r)}} < +\infty. \tag{3.2}$$

The horizon is, effectively, an *end-point* for the string, if we leave the time coordinate running from $-\infty$ to $+\infty$. If we insist on the other hand that the string world-sheet can only terminate on the UV brane, and has no other boundary in the bulk, we are forced to require that time be compactified on a circle with period $\beta_h \equiv \frac{1}{T_h}$.

We repeat this argument in the case of the confining trailing string. Now the 2-dimensional (euclidean) induced metric g_{ab} is (cfr. equation (2.14))

$$ds^2 = g_{ab} dx^a dx^b = b^2(r) \left[d\tau^2 + \frac{b^4(r)}{R^2(r)} dr^2 \right], \quad R(r) = \sqrt{b^4(r) - b_m^2}. \tag{3.3}$$

Close to the confining horizon r_m , $b(r) \simeq b_m$, $R(r) \sim 4\pi T_m b_m^2 (r_m - r)$, so that now the proper distance to the confining horizon is

$$d(r_0, r_m) = \int_{r_0}^{r_m} dr \frac{b^2(r)}{R(r)} = \lim_{r \rightarrow r_m} \left(4\pi T_m |\log(r_m - r)| \right) = +\infty. \tag{3.4}$$

The string is infinitely extended, the point $r = r_m$ is not to be considered as an endpoint, and there is no need to compactify time to enforce the condition that the world-sheet has a single boundary. This argument indicates that the fluctuations can be put in the vacuum, and are not thermally excited.¹¹

In the next subsection we will see that this argument is confirmed by an explicit Lorentzian calculation of the bulk fluctuations correlators, which shows that the fluctuation-dissipation relation is the one appropriate for zero temperature.

¹¹We thank Jan de Boer for an illuminating discussion about this point.

3.2 Explicit calculation of the correlators

In order to find the bulk fluctuation-dissipation relation, we have to separately compute the retarded and symmetrized propagator. The relation between them will reveal which is the density matrix describing the state of the fluctuations. To be precise, we will compute the symmetrized and anti-symmetrized correlators of the operator \mathcal{F} dual to the string fluctuations,

$$G_{\text{sym}}(t) = \frac{1}{2} \langle \{\mathcal{F}(t), \mathcal{F}(0)\} \rangle, \quad G_{\text{asym}}(t) = -i \langle [\mathcal{F}(t), \mathcal{F}(0)] \rangle, \quad (3.5)$$

the latter being related (in Fourier space) to the retarded correlator $G(\omega)$ by:

$$G_{\text{asym}}(\omega) = 2i \text{Im} G(\omega). \quad (3.6)$$

It is important that the expectation value of the commutator is independent of the state of the system, and it is determined only by the canonical commutation relations. On the other hand, the anti-commutator is state-dependent. For example, in a thermal ensemble at a temperature T , we have the relation

$$G_{\text{sym}}(\omega) = \frac{i}{2} \coth\left(\frac{\omega}{2T}\right) G_{\text{asym}}(\omega). \quad (3.7)$$

One way to determine the state is to separately compute G_{sym} and G_{asym} and read-off the relation between them.

To compute the propagators directly, we use the method described in [27], which does not rely on analytically continuing the fluctuations across horizons. There it is shown how, *once infalling boundary conditions are chosen at the horizon*, the fluctuation-dissipation relation, at late times, is purely determined by the physics in a narrow strip just outside the black-hole horizon.

The method introduced in [27] carries over directly to our case: we will impose infalling boundary conditions at r_m (which are the appropriate ones as argued in subsection 2.4.1) and, although no horizon is present on the world-sheet, we will see that the fluctuation-dissipation relation is determined by a narrow strip close to the string turning point, $r = r_m$.

We consider the transverse fluctuation and define $X(r, t) \equiv X^T(r, t)$. Its field equation is (see equation (2.29))

$$\left[\partial_r R \partial_r - \frac{b^4}{R} \partial_t^2 \right] X = 0. \quad (3.8)$$

This equation can be recast in a covariant form with respect to the worldsheet coordinates. Then, it is easy to check that it is equivalent to

$$\left[\partial_a b^2 \sqrt{-g} g^{ab} \partial_b \right] X = 0, \quad (3.9)$$

where g_{ab} is the induced world-sheet metric (3.3). Equation (3.9) can be derived from the following action:

$$S = - \int dt dr b^2 \sqrt{-g} g^{ab} \partial_a X \partial_b X. \quad (3.10)$$

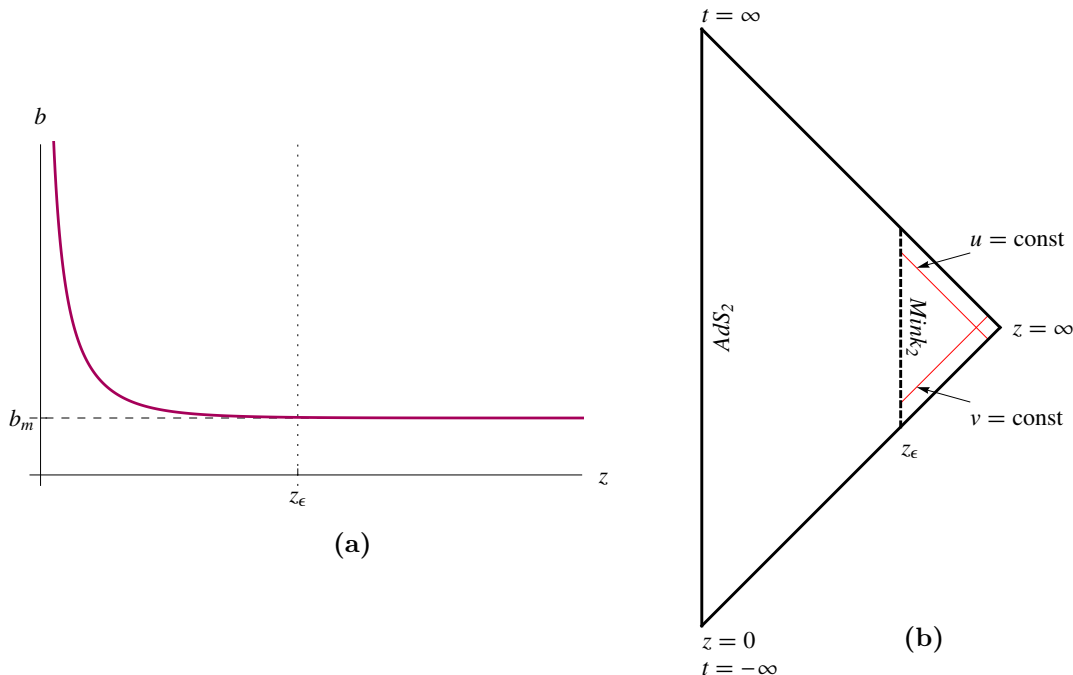


Figure 6. The 2-dimensional metric (3.15) is characterized by a scale factor that asymptotically approaches the constant b_m in the coordinate z , as can be seen in figure 6a. The Penrose diagram 6b explicitly shows that the 2-dimensional induced metric in the confining background differs from the AdS black hole that emerges at finite temperature.

This action is covariant with respect to 2-dimensional diffeomorphisms under which the scale factor $b(r)$ transforms as a scalar.

The 2-dimensional induced metric can be put in a conformally flat form by changing coordinates to

$$z = \int dr \frac{b^2}{R}, \quad ds^2 = b^2(z) [-dt^2 + dz^2]. \tag{3.11}$$

The conformal factor $b(z)$ interpolates between AdS in the UV and a finite constant in the IR at spatial infinity (see figure 6a). The worldsheet is conformal to half of Minkowski space, as illustrated in figure 6b.

Modes which are incoming from infinity reflect on the boundary and become infalling. For any initial condition made out of a superposition of incoming and outgoing modes, eventually all modes will be infalling at late times, except those originating at very large z . This fact is one of the key points of the analysis that the authors of [27] applied to the 2-dimensional black-hole geometry, and most of those considerations apply to our case.

To make this more precise, notice that thanks to the 2-dimensional nature of the problem, equation (3.9) and the corresponding action, are invariant under a conformal rescaling of the metric. In particular, they will be the same for the *2-dimensional black hole* metric

$$ds_{BH}^2 = (R/b^2) ds^2, \tag{3.12}$$

which has a genuine black hole horizon at $r = r_m$. Explicitly, close to r_m we have

$$ds^2 \simeq b_m^2 \left[-dt^2 + \frac{dr^2}{(4\pi T_m)^2 (r_m - r)^2} \right], \quad (3.13)$$

$$ds_{BH}^2 \simeq b_m^2 \left[-4\pi T_m (r_m - r) dt^2 + \frac{dr^2}{4\pi T_m (r_m - r)} \right]. \quad (3.14)$$

This relation allows us to follow the same argument that the authors of [27] used to determine the bulk fluctuation-dissipation relation obeyed by the transverse modes. In fact, the null geodesics of the two metrics above are the same, and share the property that *only initial data originating in a space-time region $r_m - \epsilon < r \leq r_m$ are relevant at late times*: the propagation takes a finite time, once it is out of the strip, to arrive at the boundary, reflect back and cross into the strip as an infalling wave. Therefore, *if we impose infalling boundary conditions at r_m* , so that there are no new outgoing modes originating at finite t , the late-time solution will be determined only by the initial data in the strip.

The width of the strip is determined in [27] by the 2-dimensional black hole temperature T_h : for $t \gg 1/T_h$ only initial data in a strip of width $\epsilon \sim e^{-tT_h}$ are important. In our case, the same argument gives $\epsilon \sim e^{-tT_m}$.

In terms of the asymptotically flat coordinate z , where the infalling null geodesics are those of constant $t - z$, the strip becomes the region $z \gg 1/T_m$ and the 2-dimensional metric reads

$$ds^2 = b^2(r) [-dt^2 + dz^2], \quad (3.15)$$

with $dz = (b^2/R)dr$. In the strip, corrections to the Minkowski metric are exponentially small, $\sim e^{-T_m z}$. Inside the strip, the fluctuations behave as free fields in Minkowski space, up to exponentially small corrections. This is the basic observation that allows to determine the late-time behavior of the correlators, thanks to the equivalence principle.

As shown in [27], the bulk fluctuation-dissipation relation is determined by the relation between the *stretched horizon correlators*, which are constructed as follows, in terms of the modes in the strip. First, one defines the *strip symmetric correlator* $g_{\text{sym}}(r_1, t_1 | r_2, t_2)$ and *strip spectral density* $g_{\text{asym}}(r_1, t_1 | r_2, t_2)$. These are solutions of the homogeneous fluctuation equations in the region $r_m - \epsilon < r < r_m$,

$$\left[\partial_a b^2(r) \sqrt{-g} g^{ab} \partial_b \right]_1 g(r_1, t_1 | r_2, t_2) = 0, \quad (3.16)$$

with reflecting boundary conditions at $r_m - \epsilon$,

$$g(r_\epsilon, t_1 | r_2, t_2) = g(r_1, t_1 | r_\epsilon, t_2) = 0, \quad r_\epsilon \equiv r_m - \epsilon. \quad (3.17)$$

What will ultimately distinguish between g_{sym} and g_{asym} is their singularity structure on the light-cone.

Next, one constructs the *stretched horizon correlators*,

$$G_h(t_1, t_2) = \left\{ \left[b^2(r) \sqrt{-g} g^{rb} \partial_b \right]_1 \left[b^2(r) \sqrt{-g} g^{rb} \partial_b \right]_2 g(r_1, t_1 | r_2, t_2) \right\}_{r_1=r_2=r_\epsilon}. \quad (3.18)$$

The symmetrized and anti-symmetrized bulk correlators (the latter coinciding with the imaginary part of the retarded correlator, up to a numerical factor) can be constructed out of these quantities. In particular, the bulk and boundary fluctuation-dissipation relations are inherited by the corresponding relations among the stretched horizon correlators. Thus, to determine the fluctuation-dissipation relation on the boundary theory it is sufficient to compute the horizon correlators (3.18).

We proceed first to the computation of the strip correlators (3.16). It is useful to define light-cone coordinates,

$$dv = dt - \frac{b^2}{R} dr = dt - dz, \quad du = -dt - \frac{b^2}{R} dr = -dt - dz, \quad (3.19)$$

in which the metric reads simply

$$ds^2 = b^2(r) dudv. \quad (3.20)$$

Inside the strip $r_\epsilon < r < r_m$, these expressions simplify to

$$v = t + \frac{1}{4\pi T_m} \log(r_m - r), \quad u = -t + \frac{1}{4\pi T_m} \log(r_m - r), \quad (3.21)$$

and the flat coordinate is

$$z \simeq -\frac{1}{4\pi T_m} \log(r_m - r). \quad (3.22)$$

The strip extends from $z_\epsilon = -(4\pi T_m)^{-1} \log \epsilon$ to infinity (see figure 6b). The metric inside the strip is the flat metric,

$$ds^2 \simeq b_m^2 dudv = b_m^2 (-dv^2 + 2dv dz), \quad z_\epsilon \leq z < +\infty, \quad (3.23)$$

up to exponentially small terms, of order $O(e^{-4\pi T_m z})$, coming from the expansion of the prefactor around r_m , as $b(z) = b_m + (b_m''/2)e^{-8\pi T_m z} + \dots$ in the large- z region.

Inside the strip, we can consider $b(r) \simeq b_m$ a constant, and equation (3.16) simply becomes:

$$\partial_{u_1} \partial_{v_1} g(v_1, u_1 | v_2, u_2) = 0. \quad (3.24)$$

As $z = -(u + v)/2$, the reflective boundary conditions at z_ϵ imply that

$$g(v_1, -v_1 - 2z_\epsilon | v_2, u_2) = g(v_1, u_1 | v_2, -v_2 - 2z_\epsilon) = 0. \quad (3.25)$$

The solution of (3.24) for both g_{sym} and g_{asym} has the same form:

$$g(v_1, u_1 | v_2, u_2) = f(u_1, u_2) - f(u_1, -v_2 - 2z_\epsilon) - f(-v_1 - 2z_\epsilon, u_2) + f(-v_1 - 2z_\epsilon, -v_2 - 2z_\epsilon), \quad (3.26)$$

where $f(u_1, u_2)$ is, up to this point, an arbitrary function.

Equation (3.26) holds both for the symmetrized and antisymmetrized strip correlators, with appropriate functions $f_{\text{sym}}(u_1, u_2)$ and $f_{\text{asym}}(u_1, u_2)$. To determine these functions, as in [27], we can use free field theory and the equivalence principle in the strip. The

symmetrized and anti-symmetrized correlators for a free canonical scalar in Minkowski space are

$$\langle \{\Phi(u_1, v_1), \Phi_2(u_2, v_2)\} \rangle = -\frac{1}{4\pi} \log |u_2 - u_1| |v_2 - v_1|, \quad (3.27)$$

$$\langle [\Phi_1(u_1, v_1), \Phi_2(u_2, v_2)] \rangle = -\frac{1}{4} [\text{sign}(u_2 - u_1) - \text{sign}(v_2 - v_1)]. \quad (3.28)$$

Matching (3.26) to the flat space results above fixes the form of the functions $f_{\text{sym}}(u_1, u_2)$ and $f_{\text{asym}}(u_1, u_2)$:

$$f_{\text{sym}}(u_1, u_2) = \frac{1}{4\pi b_m^2} \log |u_2 - u_1|, \quad f_{\text{asym}}(u_1, u_2) = \frac{1}{4b_m^2} \text{sign}(u_1 - u_2). \quad (3.29)$$

Next, we can compute the horizon correlators using equations (3.18). It is most convenient to do it in terms of the coordinates (v, z) . In these variables the flat space-time interval becomes

$$g_{ab} \Delta x^a \Delta x^b = \Delta u \Delta v = -(\Delta v)^2 + 2\Delta v \Delta z \quad (3.30)$$

and the strip correlators are given by

$$g_{\text{sym}}(v_1, z_1 | v_2, z_2) = \frac{1}{4\pi b_m^2} \log \left| \frac{[(v_2 - v_1) - 2(z_2 - z_1)](v_2 - v_1)}{[(v_2 - v_1) - 2(z_2 - z_\epsilon)][(v_2 - v_1) - (z_\epsilon - z_1)]} \right|, \quad (3.31)$$

$$g_{\text{asym}}(v_1, z_1 | v_2, z_2) = \frac{1}{4b_m^2} [\text{sign}(v_2 - v_1 + 2(z_2 - z_1)) - \text{sign}(v_2 - v_1 + 2(z_\epsilon - z_1)) \\ + \text{sign}(v_1 - v_2 + 2(z_\epsilon - z_2)) - \text{sign}(v_1 - v_2)]. \quad (3.32)$$

In these coordinates, equation (3.18) becomes, for both types of horizon correlators,

$$G_h(v_1, v_2) = b_m^4 [(\partial_{z_1} + \partial_{v_1})(\partial_{z_2} + \partial_{v_2})g(v_1, z_1 | v_2, z_2)]_{z_1=z_2=z_\epsilon}. \quad (3.33)$$

Inserting expressions (3.31) and (3.32) in the above equation, we find:

$$G_h^{\text{sym}}(v_1 - v_2) = \frac{b_m^2}{\pi} \partial_{v_1} \partial_{v_2} \log |v_2 - v_1|, \quad G_h^{\text{asym}}(v_1 - v_2) = 2b_m^2 \delta'(v_2 - v_1). \quad (3.34)$$

In Fourier space these expression give

$$G_h^{\text{sym}}(\omega) = b_m^2 |\omega|, \quad G_h^{\text{asym}}(\omega) = -2ib_m^2 \omega. \quad (3.35)$$

The Fourier-space relation between the symmetrized and anti-symmetrized propagators is therefore:

$$G_h^{\text{sym}}(\omega) = \frac{i}{2} \text{sign}(\omega) G_h^{\text{asym}}(\omega), \quad (3.36)$$

i.e. the $T = 0$ limit of the thermal fluctuation-dissipation relation (3.7).

It is instructive to compare the above calculation to the one in which the world-sheet metric is really a 2-dimensional black hole and to understand how the *thermal* fluctuation-dissipation relation appears in that case. In the strip, the black-hole world-sheet metric

and the confining string world-sheet metric are related by a conformal rescaling, (3.12), with the conformal factor given by

$$\frac{R}{b^2} \simeq 4\pi T_m (r_m - r) = e^{-4\pi T_m z}. \quad (3.37)$$

Notice that the conformal factor vanishes as we approach the horizon. Since the two-dimensional equation (3.14) is unaffected by the rescaling, the computation is unchanged until equation (3.26).

The point of departure is the matching with the free field result: for the black-hole metric this cannot be done in the coordinates (u, v) since these are not locally flat coordinates close to the horizon. In fact the metric has a non constant scaling factor and takes the form

$$ds_{BH}^2 = b_m^2 e^{-(u+v)2\pi T_m} du dv, \quad u + v \rightarrow +\infty. \quad (3.38)$$

To match with equations (3.27)–(3.28), in which the space-time interval is flat, we have to go to new coordinates (these are in fact Kruskal coordinates),

$$dU = e^{-2\pi T_m u} du, \quad dV = e^{-2\pi T_m v} dv, \quad ds_{BH}^2 = b_m^2 dU dV. \quad (3.39)$$

The correct matching is done in the U, V coordinates, which are exponentially related to the original u, v coordinates. This only affects g_{sym} , for which the function f_{sym} should now be chosen as

$$f_{\text{sym}} = \frac{1}{4\pi b_m^2} \log |U_2 - U_1| = \frac{1}{4\pi b_m^2} \left[\log |1 - e^{-2\pi T_m (u_2 - u_1)}| - 2\pi T_m u_1 \right]. \quad (3.40)$$

On the other hand, g_{asym} is only sensitive to the causal structure, as can be easily seen from equation (3.28) and the fact that $\text{sign}(u_1 - u_2) = \text{sign}(U_1 - U_2)$. The horizon spectral density is unchanged, but the thermal fluctuation-dissipation relation at temperature T_m arises from the exponential in (3.40), as shown in the explicit calculation in [27] which we will not repeat here:

$$G_h^{\text{sym}}(\omega) = \frac{i}{2} \coth \left(\frac{\omega}{2T_m} \right) G_h^{\text{asym}}(\omega). \quad (3.41)$$

The argument presented in this section relies on using the induced metric g_{ab} to compute distances inside the strip. On the other hand, as we have pointed out, classical conformal invariance of the field equation (3.9) implies that we could write the action (3.10) using *any* 2-dimensional metric conformally equivalent to the induced metric, but this would drastically change the final result. Of course, the induced metric is the most natural choice, but this does not resolve the ambiguity. The reason why the induced metric is the *correct* metric to use in this computation can be found in [33], where the authors discuss the quantization of a bosonic string in a black hole background, using the Polyakov action. In that work, it is shown that one can effectively restrict the path integral to the physical $(d-2)$ *transverse* fluctuation modes (which are the only ones we are keeping here) provided that one fixes the gauge on the world-sheet by identifying the world-sheet metric with the induced metric: in this case, the diffeomorphism ghost determinant and longitudinal modes

contributions cancel against each other from the path integral. If one uses any other conformally related metric, on the other hand, one is forced to keep track of the ghosts and longitudinal modes to obtain the correct results. Since here we are effectively quantizing the transverse modes only (at the quadratic level the Nambu-Goto and Polyakov form of the action are equivalent, up to a choice of the 2-dimensional metric), consistency requires that we use the *induced* metric in equations (3.9)–(3.10).

Equation (3.36) shows that there are no long-time dissipation effects at zero-temperature: in the zero frequency limit we have

$$G_{\text{asym}}(\omega) \sim 2i\text{Im} G(\omega) \sim -2i\sigma_c\omega \quad \omega \rightarrow 0 \quad (3.42)$$

and the Langevin coefficient $\kappa = \lim_{\omega \rightarrow 0} G_{\text{sym}}(\omega) = 0$. However, the fact that $\text{Im} G^T(\omega)$ vanishes *linearly*, means that the Langevin friction coefficient is non-zero. This also means that, as soon as we turn on temperature, i.e. we put by hand the fluctuations in a thermally excited state above the vacuum (the string analog to the thermal AdS gas in the bulk), a non-zero Langevin diffusion constant $\kappa^T(T)$ will arise for the transverse modes, since now the thermal fluctuation-dissipation (3.7) gives, in the $\omega \rightarrow 0$ limit:

$$\kappa^T(T) = 2T\sigma_c. \quad (3.43)$$

This is very different from what happens in pure AdS, and more generally as in the non-confining case: there, as shown in [25], at low frequency we always find $\text{Im} G(\omega) \sim \omega^{2a+1}$ with $a > 0$. Even in a thermal ensemble, inserting this behavior in equation (3.36) leads to a vanishing diffusion coefficient $\kappa(T)$.

4 The trailing confining string for a uniformly moving quark

We now generalize the discussion to the case where the boundary endpoint of the string moves with a constant velocity \vec{v} . The main difference with the previous sections is that isotropy on the boundary is explicitly broken, because the velocity vector picks a preferred direction.

We first recall briefly what happens in a black-hole bulk geometry. In this case, the trailing string direction is constrained to be parallel to the velocity (see appendix A for details), and the string profile now satisfies the equation:

$$\xi^t(r) = \frac{C}{f(r)} \sqrt{\frac{f(r) - v^2}{b^4(r)f(r) - C^2}} \quad (4.1)$$

where C is again an integration constant. Now the regularity condition has to be imposed at the point r_s , defined by $f(r_s) = v^2$. Since $v < 1$, this happens somewhere between the UV boundary ($f(0) = 1$) and the horizon ($f(r_h) = 0$). Regularity requires $C = vb^2(r_s)$. The induced world-sheet geometry is a 2-dimensional black hole with horizon at $r_s < r_h$ and temperature T_s , which in general is smaller than the bulk temperature T_h [23].

We now turn to the case of a confining geometry at $T = 0$, and we set again $f(r) = 1$. In this case, as shown in appendix B.1, the direction of the trailing string does not affect

the free energy, and is completely independent of the direction of the velocity. A generic solution will be specified by two unit vectors, one directed as \vec{v} , the other directed as $\vec{\xi}(r)$, plus one integration constant entering the equation for the profile. In the general case, when \vec{v} and $\vec{\xi}$ are not parallel, the solution breaks rotational invariance completely.

We will add one complication at the time, and discuss in the next section the case when $\vec{\xi}(r) \parallel \vec{v}$, leaving the general case for section 4.2.

4.1 String parallel to the quark velocity

The trailing string solution, specialized to the configuration extending in the direction parallel to the velocity,¹² is of the form

$$X^{\parallel} = vt + \xi(r), \quad X^{\perp} = 0, \tag{4.2}$$

where \parallel and \perp denote directions parallel to the velocity and transverse to the velocity, respectively (while L and T indicate directions longitudinal and transverse with respect to the direction of the string: in the case of the string parallel to the velocity they coincide). The Nambu-Goto action is in this case,

$$S_{NG} = -\frac{1}{2\pi\ell_s^2} \int dt dr b^2 \sqrt{1 - v^2 + \xi'^2}. \tag{4.3}$$

From the conservation of worldsheet momentum, the profile $\xi(r)$ satisfies the same equation (2.8) as in the static case, with $f(r) = 1$:

$$\xi'(r) = \frac{1}{\gamma} \frac{C}{\sqrt{b^4(r) - C^2}}, \quad \gamma \equiv \frac{1}{\sqrt{1 - v^2}}. \tag{4.4}$$

As in the static case, regularity requires $0 \leq C \leq b_m^2$, with the action minimized for the critical value $C = b_m^2$.

The force acting on the moving quark can be computed as usual as the momentum flow along the string. This is given by

$$\pi_{\xi} = \frac{\delta S_{NG}}{\delta \xi'} = -\frac{1}{2\pi\ell_s^2} \frac{b^2 \xi'}{\sqrt{1 - v^2 + \xi'^2}} = -\frac{b_m^2}{2\pi\ell_s^2}. \tag{4.5}$$

We immediately recognize the right hand side as σ_c , the confining string tension [9]. The force, i.e. the one-point function of the force operator coupling the quark to the plasma, is then

$$\langle \mathcal{F} \rangle = \pi_{\xi} = -\sigma_c, \tag{4.6}$$

and is directed along the string. This is *not* a frictional force, as it is independent of velocity (in fact, we would have gotten the same result in the $v = 0$ case in section 2). It is simply the classical force of a linear confining potential. This confirms the interpretation of the confining trailing string: a moving quark in a confining vacuum drags along a semi-infinite

¹²This situation is equivalent to a static trailing string ansatz, where the only preferred direction is the one in which the string bends, namely X^{\parallel} .

color flux tube of tension σ_c (we can think of it as ending on an antiquark at infinity, as discussed in subsection 2.4.1). The equation of motion is $M\ddot{X} = \sigma_c$, i.e. the quark feels the constant force due to the string; the energy loss in the time Δt is $\Delta E = Fv\Delta t = \sigma_c\Delta X$, i.e. the amount of energy needed to extend the flux tube by an amount $\Delta X = v\Delta t$. There is no dissipative force here, just the coherent effect of color confinement.

The induced world-sheet metric is

$$ds^2 = b^2(r) \left[-\frac{dt^2}{\gamma^2} + \frac{b^4 dr^2}{(b^4 - b_m^4)} \right], \tag{4.7}$$

i.e. the same as (2.14) except for the time-dilatation factor in g_{tt} .

The fluctuation equations look similar to those found in the static case, except for the replacement $\omega \rightarrow \gamma\omega$:

$$\partial_r \left[R \partial_r \delta X^\perp \right] + \gamma^2 \omega^2 \frac{b^4}{R} \delta X^\perp = 0, \tag{4.8}$$

$$\partial_r \left[\frac{R^3}{b^4} \partial_r \delta X^\parallel \right] + \gamma^2 \omega^2 R \delta X^\parallel = 0, \tag{4.9}$$

$$R \equiv \sqrt{b^4(r) - b_m^4}. \tag{4.10}$$

4.2 The general case

We now consider a classical string attached to the boundary and bending in an arbitrary direction, with the end-point moving at velocity \vec{v} with components v^i :

$$X^i = v^i t + \xi^i(r), \quad i = 1, 2, 3. \tag{4.11}$$

Here we present the results, while the details of the computation can be found in appendix B.1.

4.2.1 Classical solution

The induced world-sheet metric and the classical world-sheet action are in this case:

$$g_{ab} = b^2 \begin{pmatrix} -(1 - |\vec{v}|^2) & \vec{v} \cdot \vec{\xi}' \\ \vec{v} \cdot \vec{\xi}' & 1 + |\vec{\xi}'|^2 \end{pmatrix}, \tag{4.12}$$

$$S = -\frac{1}{2\pi\ell_s^2} \int dt dr b^2 \sqrt{(1 - |\vec{v}|^2)(1 + |\vec{\xi}'|^2) + (\vec{v} \cdot \vec{\xi}')^2}. \tag{4.13}$$

Extremizing this action with respect to the three independent components of $\vec{\xi}(r)$ leads to the same first order equations for each component,

$$\xi'^i = \frac{c^i}{\sqrt{b(r)^4 - C^2}}, \tag{4.14}$$

where \vec{c} is a *constant* vector, whose components are the three integration constants that fix the conserved momenta π_ξ^i conjugate to ξ^i , and the constant C is given by the equation

$$C^2 = |\vec{c}|^2 + \gamma^2 (\vec{v} \cdot \vec{c})^2. \tag{4.15}$$

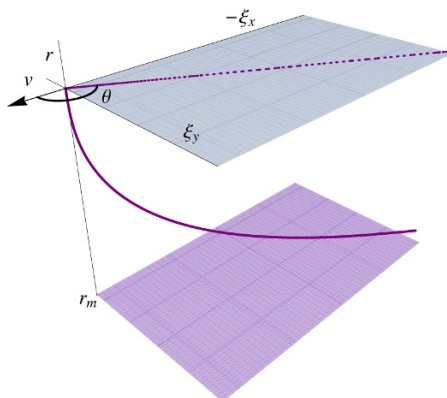


Figure 7. Here we show the profile of the confining trailing string for $C = b_m^2$. The axes are chosen so that the velocity points in the x direction, and only x and y components of ξ are shown ($\varphi = 0$).

As usual, regularity imposes $0 \leq C \leq b_m^2$. Once C is set by minimizing the action, equation (4.15) fixes one combination of the three integration constants c_i , leaving two free parameters that determine the trailing string direction.

Evaluating the action on-shell we obtain:

$$S = -\frac{1}{2\pi\ell_s^2} \frac{1}{\gamma} \int dt dr \frac{b^4}{\sqrt{b(r)^4 - C^2}}. \tag{4.16}$$

We observe that the action only depends on C , and not on the string direction. Following the same reasoning as in section 2, one can show that the Euclidean action is minimized for $C = b_m^2$ as for the static case. The two free coefficients out of the three c^i can then be related to the angles that the trailing string forms with the velocity. In particular, if we introduce spherical angular coordinates (θ, φ) with the x -axis parallel to \vec{v} such that $\vec{v} = (v, 0, 0)$, using (4.15) we easily find:

$$\vec{c} = C \sqrt{\frac{1 - v^2}{1 - v^2 \sin^2 \theta}} \begin{pmatrix} \cos \theta \\ \sin \theta \cos \varphi \\ \sin \theta \sin \varphi \end{pmatrix}, \quad C = b_m^2 \tag{4.17}$$

The profile of the string in terms of the polar angle is illustrated in figure 7.

As in the previous section we can compute the force acting on the quark, as the momentum flow along the string. A straightforward calculation shows that the three conserved components of the world-sheet momentum, conjugate to the sting profile, are given by the vector

$$\vec{\pi}(v, \theta, \varphi) = \sigma_c \frac{1}{\sqrt{1 - v^2 \sin^2 \theta}} \begin{pmatrix} \cos \theta \\ (1 - v^2) \sin \theta \cos \varphi \\ (1 - v^2) \sin \theta \sin \varphi \end{pmatrix}. \tag{4.18}$$

Notice that the classical force exerted by the string is velocity and angle-dependent, and in general it is *not* directed along the string (whose direction is instead the one of \vec{c} , eq. (4.17)),

except for $\theta = 0, \pi$, and/or in the non-relativistic limit $v \ll 1$. The power dissipated to keep the quark in uniform motion (i.e. the rate of energy loss of the quark to the medium) is

$$\vec{\pi} \cdot \vec{v} = \sigma_c \frac{v \cos \theta}{\sqrt{1 - v^2 \sin^2 \theta}}. \quad (4.19)$$

For small velocities, this coincides with the work against the confining force needed in the time Δt to stretch the string by an amount $\Delta X = v \Delta t$.

4.2.2 Fluctuations

We can now consider fluctuations in the ansatz (4.11), by writing

$$X^i = v^i t + \xi^i(r) + \delta X^i(r, t). \quad (4.20)$$

To second order in the fluctuations, the action reads:

$$S = -\frac{1}{2\pi\ell_s^2} \int dt dr \frac{1}{2} \mathcal{G}_{ij}^{ab} \partial_a \delta X^i \partial_b \delta X^j, \quad (4.21)$$

where the \mathcal{G}_{ij}^{ab} are obtained by expanding the world-sheet action:

$$\mathcal{G}_{ij}^{ab} = \frac{b^4}{\sqrt{-\det g_{ab}}} \left[b^2 g^{ab} \Xi_{ij} - 2\epsilon^{ab} \alpha_{ij} \right]. \quad (4.22)$$

Here Ξ_{ij} and α_{ij} are respectively symmetric and antisymmetric, and their explicit form is given in appendix (B.2).

The fluctuation equations are

$$\partial_a \left[\mathcal{G}_{ij}^{ab} \partial_b \delta X^j \right] = 0. \quad (4.23)$$

These are coupled equations for the fluctuations δX^i . As shown in appendix B.2, it is possible to introduce new variables that make the system diagonal: first we decompose $\delta \vec{X}$ along \vec{v} , \vec{c} and the orthogonal direction \vec{n} ,

$$\delta \vec{X} = \delta X_v \vec{v} + \delta X_\xi \vec{c} + \delta X_n \vec{n}, \quad (4.24)$$

then we define the linear combinations

$$\delta X^L = \delta X_\xi + \frac{\vec{v} \cdot \vec{c}}{(1 - v^2) C^2} \delta X_v, \quad \delta X_1^T = \delta X_n, \quad dX_2^T = \delta X_v. \quad (4.25)$$

Remarkably, these new variables satisfy the same decoupled equations, (4.8)–(4.9), as those for the longitudinal and transverse modes in the case \vec{v} parallel to \vec{c} :

$$\partial_r \left[R \partial_r \delta X^T \right] + \gamma^2 \omega^2 \frac{b^4}{R} \delta X^T = 0, \quad (4.26)$$

$$\partial_r \left[\frac{R^3}{b^4} \partial_r \delta X^L \right] + \gamma^2 \omega^2 R \delta X^L = 0, \quad (4.27)$$

In this case the labels L, T do not refer to the direction of the fluctuations, but rather to the fact that they are governed by the same equations as the fluctuations L and T to the string in the static case (up to factors of γ). Notice however that δX_n is still transverse to both the velocity and the string direction.

The analysis of (4.26) and (4.27) is analogous to the one we carried out in detail in section 2: in particular, the fluctuation δX^L has real solution for $\gamma\omega < 4\pi T_m$, which leads to a gap in the imaginary part of the retarded Green's function in this direction. On the other hand, the fluctuations δX_n and δX_v have a spectrum starting at $\omega = 0$, and by the same discussion as in the previous section, the corresponding retarded correlator has a non-trivial zero-frequency limit.

5 Boundary correlators for quark in uniform motion

From the solutions of the fluctuation equations with appropriate boundary conditions we can obtain, as was done in the static case, the boundary retarded correlators G^{ij} . These will depend on the direction of the trailing string, as well as on the magnitude and direction of the velocity. Without loss of generality, we can fix the velocity to be along the x -direction, and introduce the polar and azimuthal angles (θ, φ) of the trailing string with respect to \vec{v} . Our goal is to compute the quantity (see equation (2.47))

$$G^{ij}(\omega; v; \theta, \varphi) = - \left[F^{ik}(-\omega, r; v, \theta, \varphi) \mathcal{G}_{kl}^{rb}(r, v, \theta, \varphi) \partial_b F^{lj}(\omega, r; v, \theta, \varphi) \right]_{r=0}, \quad (5.1)$$

where $F^{ij}(r, \omega; v, \theta, \varphi)$ are the bulk-to-boundary propagators with infalling (or normalizable) conditions at r_m .

The fact that the fluctuation equations decouple in a suitable basis, and most of all the fact that the corresponding decoupled equations are completely independent of (θ, φ) , allows us to write a closed expression for the correlator in terms of two simpler quantities,

$$F^T(r, \omega; v) \quad \text{and} \quad F^L(r, \omega; v), \quad (5.2)$$

which are the bulk-to-boundary propagators associated to equations (4.26), (4.27). Moreover, they are the same quantities that we used to compute the correlator in the static case ($v = 0$) of section 2, and for the case $\theta = 0, \pi$ which we discussed of section 4.1. In fact, since v enters in the field equations only through the combination $\gamma\omega$, we have

$$F^{T,L}(r, \omega; v) = F^{T,L}(r, \gamma\omega; 0) \equiv F_0^{T,L}(r, \gamma\omega). \quad (5.3)$$

The functions on the right-hand-side of the last equation are the bulk-to-boundary propagators corresponding to the static quark, obtained in section 2.

In particular, in the special case of section 3.1, $\theta = 0, \pi$ (string parallel to the quark velocity) we recover the results

$$F^{ij}(\omega, r; v, \theta = 0, \varphi = 0) = \frac{v^i v^j}{v^2} F_0^L(r, \gamma\omega) + \left(\delta^{ij} - \frac{v^i v^j}{v^2} \right) F_0^T(r, \gamma\omega). \quad (5.4)$$

In order to obtain the expression for (5.1) in terms of the basic propagators $F^{T,L}$, we first apply a linear transformation to pass to the coordinates (4.25), which diagonalize \mathcal{G} , then we write the solutions in terms of the (angle-independent) functions (5.3), then we rotate back to the original coordinates. The procedure is explained in detail in appendix C. The crucial observation is that the linear transformation that diagonalizes the field equations is r -independent and therefore it commutes with the radial derivative, leading to a result that can be written in closed form:

$$G^{ij}(\omega; v; \theta, \varphi) = \frac{1}{1 - v^2 \sin^2 \theta} \left(H_T^{ij}(v, \theta, \varphi) G^T(\omega; v) + H_L^{ij}(v, \theta, \varphi) G^L(\omega; v) \right), \quad (5.5)$$

with $H_{T,L}$ defined as two symmetric ω -independent matrices whose components are given explicitly in appendix C, equation (C.13). The correlators $G^{T,L}(\omega, v)$ are the basic boundary Green functions obtained for $\theta = 0, \pi$, i.e. from $F^{T,L}(\omega, r; v)$, as in equation (2.49), (2.50):

$$G^T(\omega; v) = -\frac{1}{2\pi\ell_s^2} \left[\frac{R}{\gamma} F^T(r, -\omega; v) \partial_r F^T(r, \omega; v) \right]_{r=0}, \quad (5.6)$$

$$G^L(\omega; v) = -\frac{1}{2\pi\ell_s^2} \left[\frac{\gamma R^3}{b^4} F^L(r, -\omega; v) \partial_r F^L(r, \omega; v) \right]_{r=0}. \quad (5.7)$$

What is remarkable about equation (5.5) is that, although the trailing string solution and fluctuation equations depend non-trivially on the relative direction between the string and the quark velocity, this angular dependence factorizes from the dependence on ω in a quite simple way.

We note that the θ - and φ -dependent correlator (5.5) reduces to $G^{11} = G^L$, $G^{22} = G^{33} = G^T$, (all other components vanish) in the special case $\theta = 0$ as it is expected.

5.1 Averaging over string orientations

The Green's function (5.5) that we obtained in closed form, although it corresponds to the general solution for the trailing string in the gravity dual, cannot be the end of the story from the boundary field theory point of view. On the gauge theory side, the only boundary data are the position and velocity of the quark, and there is no place for a dependence on extra angular variables θ, φ . If there is no physical principle (other than extremizing the action) which selects a specific direction for the string, then all solutions are physically allowed and, in the spirit of the AdS/CFT correspondence, we should sum their contribution in the path integral. Since all configurations corresponding to different (θ, φ) have the same action, this amounts to an average over all possible string directions, with equal weight.

As we shall see shortly, there is more than one way of performing the average: we will present three distinct possibilities, which give different final answers. Which one is the correct one depends on the precise definition of the physical problem. However, as we shall see at the end of this section, there is one guiding principle — the consistency between classical and one-loop result — that can eliminate some of the possibilities as unphysical.

No matter what the chosen averaging procedure is, the general way to arrive at angle-independent correlators is given as follows. In AdS/CFT, the boundary theory partition

function for the particle fluctuations is obtained by summing over all possible semi-classical saddle points of the bulk theory (in this case, over all possible string orientations) with some measure $d\mu(\theta, \varphi)$ to be specified: schematically (i.e. ignoring for the moment that we should write the path integrals and effective actions in a double-field formalism),

$$\exp\{iS_{\text{eff}}[\delta\vec{X}_o(\omega)]\} = \int d\mu[\theta, \varphi] \exp\{iS_{(\theta, \varphi)}[\delta\vec{X}]\}, \quad (5.8)$$

where $d\mu[\theta, \varphi]$ is an appropriate measure, and $S_{(\theta, \varphi)}[\delta\vec{X}_o(\omega)]$ is the on-shell action for the fluctuation $\delta\vec{X}(r, \omega)$ around the string solution specified by the angles (θ, φ) , subject to the boundary condition

$$\delta\vec{X}(\omega, r) \rightarrow \delta\vec{X}_o(\omega), \quad r \rightarrow 0. \quad (5.9)$$

At quadratic order in the fluctuations, the on-shell action is

$$S_{(\theta, \varphi)} = \frac{1}{2} \int d\omega \delta X_o^i(-\omega) G^{ij}(\omega; v, \theta, \varphi) \delta X_o^j(\omega), \quad (5.10)$$

where the propagator is computed holographically by equation (5.1). Since we are working at quadratic order, we may expand the exponential on the right-hand side of (5.8), perform the average on $G^{ij}(\omega, \theta, \varphi)$, and re-exponentiate:

$$\begin{aligned} Z &\simeq \int d\mu[\theta, \varphi] \left\{ 1 + \frac{i}{2} \int d\omega G_{ij}(\omega; \theta, \varphi) \delta X_o^i(-\omega) \delta X_o^j(\omega) \right\} \\ &= 1 + \frac{i}{2} \int d\omega \langle G_{ij} \rangle_\mu(\omega) \delta X_o^i(-\omega) \delta X_o^j(\omega) \simeq e^{\frac{i}{2} \int d\omega \langle G_{ij} \rangle_\mu(\omega) \delta X_o^i(-\omega) \delta X_o^j(\omega)}. \end{aligned} \quad (5.11)$$

Thus, we obtain an isotropic boundary action:

$$S_{\text{eff}}[\delta\vec{X}(\omega)] = \frac{1}{2} \int d\omega \delta X_o^i(-\omega) \langle G^{ij} \rangle_\mu(\omega, v) \delta X_o^j(\omega), \quad (5.12)$$

where

$$\langle G^{ij} \rangle_\mu(\omega, v) = \int d\mu[\theta, \varphi] G^{ij}(\omega; v, \theta, \varphi). \quad (5.13)$$

To the order at which we are working, summing over possible string orientations is equivalent to averaging the retarded correlators directly.

Below we present three possible averaging procedures, i.e. distinct choices of the measure $\mu[\theta, \varphi]$ corresponding to different physical interpretations of the process.

5.1.1 Ω -averaged correlators

The most natural choice is to simply average over all orientations with equal weight,

$$d\mu[\theta, \varphi] = \frac{d\Omega}{4\pi}. \quad (5.14)$$

This means assuming that all directions of the trailing sting are equally likely, and they are uncorrelated with the direction of the quark velocity. We will denote the average by $\langle \ \ \rangle_\Omega$.

Thanks to the factorization of the angular variables and frequency displayed in equation (5.5), the solid angle integral can be performed analytically. The result is an averaged correlator which does not couple transverse and longitudinal (to the velocity) modes:

$$\langle G^{ij} \rangle_{\Omega}(\omega, v) = \frac{v^i v^j}{v^2} \langle G^{\parallel} \rangle_{\Omega}(\omega, v) + \left(\delta^{ij} - \frac{v^i v^j}{v^2} \right) \langle G^{\perp} \rangle_{\Omega}(\omega, v), \quad (5.15)$$

with transverse and longitudinal correlators given by

$$\langle G^{\parallel} \rangle_{\Omega}(\omega, v) = A(v) G^L(\omega, v) + \gamma^2 (1 - A(v)) G^T(\omega, v) \quad (5.16)$$

$$\langle G^{\perp} \rangle_{\Omega}(\omega, v) = \frac{1}{2} \left[(1 + A(v)) G^T(\omega, v) + \frac{1 - A(v)}{\gamma^2} G^L(\omega, v) \right]. \quad (5.17)$$

Here $G^{L,T}(\omega, v)$ are the basic boundary correlators for $\theta = \pi$ given in equations (5.6), (5.7), and $A(v)$ is the function

$$A(v) = \frac{1}{v^3} \left(v - \frac{1}{\gamma} \arcsin v \right). \quad (5.18)$$

Although it seems the most natural thing to do, we will see in section 5.4 that this averaging procedure is *inconsistent* with the assumption that the single endpoint description of the string is well-defined (i.e. the effective Langevin description takes into account all other degrees of freedom). Therefore we are led to explore alternative possibilities to eliminate the angle dependence.

5.1.2 w -averaged correlators and the shadow quark picture

A different possibility for the choice of the integration measure arises if we stick to our physical intuition of the infinite trailing confining string configuration as the limit of a very long string connecting two quarks, one of which is not observed. If we want to take the shadow quark picture literally, we must average over all states of the endpoint at infinity which are consistent with a stationary state for the string, but otherwise assuming complete ignorance about this state. To adhere to this picture, rather than summing over all possible string directions, we can average over all possible *uniform velocities* the shadow quark. Under these assumptions, we arrive at a different integration measure, which as we will show in section 5.4 satisfies the appropriate consistency required by the assumption that we are describing the ensemble of an isolated quark

We start by assuming that the shadow quark has an arbitrary constant velocity \vec{w} , and that the trailing string is along the direction connecting the observed and unobserved quark. If \vec{w} is not parallel to \vec{v} (the velocity of the observed quark), at first the trailing string direction will be time-dependent, but in the limit $t \rightarrow \infty$ a stationary state will be reached (see appendix D), with angles θ, φ fixed by the relation

$$\cos \theta = \frac{\vec{v} \cdot \vec{w} - v}{|\vec{w} - \vec{v}|} = \frac{w \cos \theta_w - v}{(w^2 + v^2 - 2vw \cos \theta_w)^{1/2}}, \quad \varphi = \varphi_w. \quad (5.19)$$

Here $w = |\vec{w}|$ and we have introduced (θ_w, φ_w) as the polar and azimuthal angle of \vec{w} with respect to \vec{v} .

Assuming all possible values of \vec{w} can occur with equal probability means integrating over $dw, d\theta_w, d\varphi_w$, with the appropriate Lorentz-invariant measure, which, as shown in appendix D, is given by

$$d\mu[w, \theta_w, \varphi_w] = \frac{1}{\mathcal{N}} d\varphi_w d\cos\theta_w \frac{w^2 dw}{2(1-w^2)^2}, \quad (5.20)$$

$$0 < \theta_w < \pi, \quad 0 < \varphi_w < 2\pi \quad 0 < w < 1,$$

where \mathcal{N} is an appropriate normalization factor.¹³

We obtain the desired average by first writing the correlator G^{ij} in equation (5.5) as a function of w, θ_w, φ_w using (5.19), then integrating the resulting function with the measure (5.20),

$$\langle G^{ij} \rangle_w(\omega, v) = \int d\mu[w, \theta_w, \varphi_w] G_R^{ij}(\omega; v, \theta(v, w, \theta_w), \varphi_w). \quad (5.21)$$

Using the explicit form of the matrices $H_{T,L}(\theta, \varphi)$, which can be found in appendix C, we find once more that the integrals can be performed analytically, with the final result

$$\langle G^{\parallel} \rangle_w(\omega, v) = \left[1 - \frac{\tilde{A}(v)}{\gamma^2} \right] G^L(\omega, v) + \tilde{A}(v) G^T(\omega, v), \quad (5.22)$$

$$\langle G^{\perp} \rangle_w(\omega, v) = \left[1 - \frac{\tilde{A}(v)}{2\gamma^2} \right] G^T(\omega, v) + \frac{\tilde{A}(v)}{2\gamma^4} G^L(\omega, v), \quad (5.23)$$

where again $G^{T,L}(\omega, v)$ are the basic boundary correlators for $\theta = \pi$ and given in equations (5.6), (5.7), and $\tilde{A}(v)$ is the function

$$\tilde{A}(v) = \frac{2}{v^3} (\operatorname{arctanh}(v) - v). \quad (5.24)$$

5.1.3 Fixed-direction correlators

As a third example of eliminating the angular dependence from the correlators, we may use some additional input to fix the direction of the trailing string. For example, in the two-quark picture, we may assume that the quark-antiquark pair is created at rest in a momentum-conserving process, in which case the two particles have equal and opposite velocities. If these assumptions fit the process under consideration, then it is natural to pick the particular solution with $\theta = \pi$, rather than averaging over the angles. In this case, the trailing string solution reduces to the one discussed in section 4.1, and the physical correlators are simply given by

$$G^{\parallel} \Big|_{\pi} = G^L(\omega, v), \quad G^{\perp} \Big|_{\pi} = G^T(\omega, v). \quad (5.25)$$

¹³In order to have a finite result, the integrals must be regulated close to $w = 1$, but as long as we regulate both the averages and the normalization in the same way, the result will be finite and will not depend on the details of the regularization.

5.1.4 Static and ultra-relativistic limit

We will explore what the different average procedures become in the static and high-velocity limit respectively.

As $v \ll 1$, the functions $A(v)$ and $\tilde{A}(v)$ in (5.18) and (5.24) have the following behavior:

$$A(v) \simeq \frac{1}{3} + O(v^2), \quad \tilde{A}(v) \simeq \frac{2}{3} + O(v^2). \quad (5.26)$$

Inserted in equations (5.16)–(5.17) and (5.22)–(5.23) this gives the same non-relativistic limit for both angular and w -average:

$$\left. \begin{array}{l} \langle G^\perp \rangle \\ \langle G^\parallel \rangle \end{array} \right\} \xrightarrow{v \rightarrow 0} \frac{2}{3} G^T + \frac{1}{3} G^L. \quad (5.27)$$

In this limit we obtain $\langle G^\parallel \rangle \simeq \langle G^\perp \rangle$. In particular the averaged static propagators are completely isotropic. This is a consistency check for our calculations, since all spatial directions should be equivalent for a static quark, once we average over the possible string orientations.

In the ultra-relativistic limit, we obtain

$$\langle G^\parallel \rangle \simeq \gamma^2 \langle G^\perp \rangle \simeq G^L \simeq \gamma^2 G^T, \quad (5.28)$$

where we used the fact that b_m is much smaller than b evaluated at the boundary, so that the prefactors in equations (5.6)–(5.7) only differ by a γ^2 factor, as written in the above formula. Moreover, as in the finite-temperature case, the fluctuation equations only depend on the velocity through the combination $\gamma\omega$, so that the ultra-relativistic limit corresponds to the high-frequency limit. The confining trailing string correlators then display the same divergence as in the finite-temperature correlators for $v \rightarrow 1$.

5.2 High-frequency limits

Although different choices of the averaging procedure lead to different results for the boundary correlators, the high frequency limit is universal. Equations (4.26), (4.27) and (5.6), (5.7) have the same form as those studied in the black hole backgrounds in [25], with the same asymptotic limit $R \sim b^2$ as $r \rightarrow 0$. The results found in [25] using the WKB method hold and, as $\omega \rightarrow \infty$, one finds

$$G^L(\omega; v) \simeq \gamma^2 G^T(\omega; v), \quad \omega \rightarrow \infty, \quad (5.29)$$

up to $O(\omega^{-4})$ corrections. Using this relation in both equations (5.16), (5.17) and (5.22), (5.23) one simply obtains:

$$\langle G^\parallel \rangle(\omega; v) \rightarrow G^L(\omega; v), \quad \langle G^\perp \rangle(\omega; v) \rightarrow G^T(\omega), \quad \omega \rightarrow \infty. \quad (5.30)$$

The same is clearly true for the fixed direction correlator of section 5.1.3.

Therefore, the zero-temperature confining string correlators share the same high-frequency universal behavior of the finite-temperature correlators. This result is crucial if we want to use the zero-temperature correlator to define dressed Langevin correlators with an acceptable (i.e. vanishing at least as $1/\omega$) high-frequency behavior, as was done in [25] in the non-confining case. This point will be addressed in section 6.

5.3 Low-frequency limit and friction coefficients

In subsection 2.4.3 we have derived the friction coefficients in the static limit $v \rightarrow 0$. The friction coefficients in the directions perpendicular and parallel to the trailing string were computed by the zero-frequency limit of the correlators $G^{T,L}(\omega)$. Using those results, we want to obtain the friction coefficients in the general case (before, and after averaging over directions).

Before averaging, for a generic string direction labelled by (θ, φ) we have angle-dependent friction coefficients defined by

$$\eta^{ij}(v, \theta, \varphi) = - \lim_{\omega \rightarrow 0} \frac{\text{Im } G^{ij}(\omega; v, \theta, \varphi)}{\omega}, \quad (5.31)$$

where $G^{ij}(\omega; v, \theta, \varphi)$ is given in (5.5). On the other hand, since $F(r, \omega; v) = F(r, \gamma\omega; 0)$, equations (5.6), (5.7) have the same low-frequency limits as in the static case,¹⁴ i.e. those given in (2.58):

$$\eta^T \equiv - \lim_{\omega \rightarrow 0} \frac{\text{Im } G^T(\omega, v)}{\omega} = \sigma_c, \quad \eta^L = - \lim_{\omega \rightarrow 0} \frac{\text{Im } G^L(\omega, v)}{\omega} = 0. \quad (5.32)$$

We find

$$\eta^{ij}(v, \theta, \varphi) = \frac{H_T^{ij}(v, \theta, \varphi)}{1 - v^2 \sin^2 \theta} \sigma_c, \quad (5.33)$$

where H_T is given explicitly in appendix C. We observe that there are off-diagonal friction coefficients coupling transverse and longitudinal directions.

Averaging over directions removes off-diagonal components and decouples transverse and longitudinal friction coefficients, and we can use a decomposition analogous to equation (5.15). However, unlike the case of the high-frequency limit, which was universal, the friction coefficients will depend on the averaging procedure.

Ω -average. Integrating equation (5.33) over the solid angle (or using directly the low-frequency limit on the averaged correlators (5.16), (5.17)) we find

$$\langle \eta^{\parallel} \rangle_{\Omega} = \gamma^2 (1 - A(v)) \sigma_c, \quad (5.34)$$

$$\langle \eta^{\perp} \rangle_{\Omega} = \frac{1 + A(v)}{2} \sigma_c, \quad (5.35)$$

where $A(v)$ has been defined in (5.18).

In the non relativistic limit $v \rightarrow 0$, expanding $A(v)$ and γ one finds that the diffusion constants become isotropic, and reduce to the geometric average of the two quantities in (5.32):

$$\langle \eta^{\perp} \rangle_{\Omega} \simeq \langle \eta^{\parallel} \rangle_{\Omega} \simeq \frac{2}{3} \sigma_c, \quad \text{as } v \rightarrow 0. \quad (5.36)$$

This is the same result we would find in the static case if we average over all possible string directions.

¹⁴The extra γ factor in the denominator of equation (5.6) cancels out.

w-average. If we instead integrate using the measure (5.20), we find (as can be derived from equations (5.22), (5.23)):

$$\langle \eta^{\parallel} \rangle_w = \tilde{A}(v) \sigma_c, \tag{5.37}$$

$$\langle \eta^{\perp} \rangle_w = \left[1 - \frac{\tilde{A}(v)}{2\gamma} \right] \sigma_c, \tag{5.38}$$

with $\tilde{A}(v)$ as defined in (5.24).

In the non-relativistic limit we again find the isotropic result

$$\langle \eta^{\perp} \rangle_w \simeq \langle \eta^{\parallel} \rangle_w \simeq \frac{2}{3} \sigma_c, \quad \text{as } v \rightarrow 0. \tag{5.39}$$

Fixed angle. Finally, if we fix the trailing string to have the same direction of the quark velocity ($\theta = \pi$) we find, using (5.33) and the explicit form of the matrix H_T , equation (C.13),

$$\eta^{\parallel} \Big|_{\pi} = 0, \quad \eta^{\perp} \Big|_{\pi} = \sigma_c, \tag{5.40}$$

which is independent on the magnitude of the velocity.¹⁵

5.4 Drag force consistency conditions

Throughout the paper we have seen that there are two ways in which the frictional force arises from the holographic computation:

- From a *classical* computation of the momentum flow along the string, which gives the velocity dependent of the force on the moving quark,

$$F_q^i = \pi^i(v) = \frac{\delta S}{\delta \xi^{i'}} \Big|_{on-shell}; \tag{5.41}$$

- From a *one-loop* computation of the boundary retarded propagator, whose imaginary part gives the velocity dependent matrix of friction coefficients,

$$\frac{\text{Im } G^{ij}}{\omega} \Big|_{\omega \rightarrow 0} = -\eta^{ij}(v). \tag{5.42}$$

In the standard case of a pure AdS black hole, one finds a trivial velocity dependence and a very simple relation between the right hand sides of (5.41) and (5.42):

$$\vec{\pi} = -\eta \vec{v}, \quad \eta^{ij} v_j = \eta v^i, \tag{5.43}$$

where η is a constant. This means that the classical friction coefficients agrees with the one-loop calculation. This is as it should be, as the two quantities reflect the same physics.

In the general case, the force cannot be described simply as a viscous friction, since the dependence on the velocity is much more complicated than proportionality (5.43).

¹⁵One may be puzzled by the fact that this result is not isotropic as $v \rightarrow 0$, but this is not surprising, as it was obtained as the zero-velocity limit of a system with a preferred direction.

However, the agreement between the classical and one-loop result must extend to any situation that has a consistent stationary-state behavior. As shown in appendix F, the compatibility between the classical force and the longitudinal component of the one-loop result can be obtained as a Ward identity in the double-field formalism, and reads

$$\frac{d}{dv}\pi^i = -\eta^{ij} \frac{v_j}{v}. \tag{5.44}$$

Clearly this relation is satisfied for the case of viscous friction with a constant coefficient η , when $\pi^i = -\eta v^i$ and the propagator behaves at low frequency as $G^{ij} = -i\omega\eta(v^i v^j/v^2) + (\text{transverse}) + O(\omega^2)$, and one recovers (5.43). However, (5.44) is completely general and must hold whenever the ensemble describing the process is well defined, and whenever a stationary limit can be reached (i.e. $\vec{\pi}$ does not depend on time and the limit $\omega \rightarrow 0$ of the correlators is well-defined), with no other assumption on the velocity dependence of the force and the propagator.

5.5 Consistency of the holographic correlators

One may think that consistency of the holographic computation should ensure that (5.44) is obeyed, but this in fact is not the case. We analyze equation (5.44) for the various (averaged and non-averaged) correlators defined in section 5.1.

Fixed-direction correlators. We start with the (θ, φ) -dependent quantities, before averaging. The drag force $\pi^i(v, \theta, \varphi)$ is given by equation (4.18),

$$\vec{\pi}(v, \theta, \varphi) = \frac{\sigma_c}{(1 - v^2 \sin^2 \theta)^{1/2}} \begin{pmatrix} \cos \theta \\ (1 - v^2) \sin \theta \cos \varphi \\ (1 - v^2) \sin \theta \sin \varphi \end{pmatrix}. \tag{5.45}$$

Differentiating with respect to v we obtain

$$\frac{d}{dv}\pi^j(v) = -\frac{v \sigma_c}{(1 - v^2 \sin^2 \theta)^{3/2}} \begin{pmatrix} \sin^2 \theta \cos \theta \\ [(1 + v^2) \sin^2 \theta - 2] \sin \theta \cos \varphi \\ [(1 + v^2) \sin^2 \theta - 2] \sin \theta \sin \varphi \end{pmatrix}. \tag{5.46}$$

On the other hand, the longitudinal¹⁶ component of the friction coefficient $\eta^{1i}(v, \theta, v f)$ are found via equations (5.33) and (C.13):

$$\eta^{j1} = \frac{\sigma_c}{(1 - v^2 \sin^2 \theta)} \begin{pmatrix} \sin^2 \theta \\ \cos \theta \sin \theta \cos \varphi \\ \cos \theta \sin \theta \sin \varphi \end{pmatrix}. \tag{5.47}$$

Comparing equations (5.47) and (5.46) we immediately observe that the (θ, φ) -dependent drag force does not obey the consistency relation (5.44), *except* for the special cases $\theta = 0, \pi$ (string parallel to the velocity), where both sides vanish identically.

One may ask what happens after averaging over the angles, and *then* checking whether (5.44) is satisfied. We will consider two possible averaging procedures, as already discussed in section 5.1.1 and 5.1.2 for the correlators: the naive average over (θ, φ) and the average over the unobserved quark velocity.

¹⁶We remind the reader that we are assuming the velocity vector to be along the 1-direction.

Ω -average. Upon averaging over the solid angle, all components of π average to zero for any v :

$$\langle \pi_i \rangle_\Omega = \int \frac{d\Omega}{4\pi} \pi_i(\theta, \varphi) = 0, \quad (5.48)$$

i.e, the average drag force due to strings uniformly distributed around all direction vanishes identically. Therefore,

$$\frac{d}{dv} \langle \pi^j \rangle_\Omega = 0. \quad (5.49)$$

On the other hand, while the 12- and 13-components of $\langle \eta^{ij} \rangle_\Omega$ vanish, the 11-component is positive and has a non-zero angular average. The result is given by equation (5.34), and the consistency relation (5.44) fails.

w -average. The second option is to average over the unobserved quark velocity, as explained in appendix D. We first have to express $\cos\theta$ and $\sin\theta$ in terms of $(w, \theta_w \varphi_w)$ in (5.45), then take the w -average using (D.7) and (D.8). This time, we obtain a non-trivial drag force along the velocity direction:

$$\langle \pi^\parallel \rangle_w = \left[-\frac{1}{v} + \left(\frac{1}{v^2} - 1 \right) \operatorname{arctanh} v \right] \sigma_c, \quad \langle \pi^\perp \rangle_w = 0. \quad (5.50)$$

Differentiating with respect to v we obtain

$$\frac{d}{dv} \langle \pi^\parallel \rangle_w = 2 \frac{\sigma_c}{v^3} (v - \operatorname{arctanh} v) \quad (5.51)$$

which matches exactly with the longitudinal component $\langle \eta^\parallel \rangle_w$ of the one-loop result, equation (5.37).

Consistency and the shadow quark picture. To summarize, we have reached the following conclusions:

1. The consistency relation (5.44) *fails* for the (θ, φ) -dependent correlators coming from a string at an arbitrary angle with the velocity, *except* for the case $\theta = \pi$ considered in section 5.1.3 (or $\theta = 0$);
2. For direction-averaged correlators, (5.44) *fails* if we use the simple Ω -average of section 5.1.1;
3. On the other hand, the correlators obtained by the w -average of section 5.1.2 satisfy (5.44).

The consistency condition (5.44) gives a criterion to select appropriate average procedures. Surprisingly, the most natural option, averaging over all possible string directions with equal weight, does not pass this consistency test. There is a physical explanation for this fact, which comes from the picture of the confining trailing string as a limit of the quark-antiquark system.

Using the non-averaged correlators means that we are choosing an arbitrary fixed direction for the string, However, fixing a direction for the string means that we are *forcing* the unobserved quark at infinity to move parallel to the observed quark, with the same velocity: this is the only way the trailing string stays at a fixed arbitrary angle with the observed quark velocity. But this introduces a *correlation* between the two quarks. This

does not agree with the point of view that we took for the whole computation, i.e. the fact that we want to observe an *isolated* quark interacting with the confining vacuum. Moreover, this cannot possibly lead to a well-defined ensemble for the observed quark, because by fixing the string direction we are effectively coupling it to a degree of freedom that is not included in the medium and is not being “integrated out”.

This problem survives the average over the angles if we use the naive Ω -average: for each term in the average, we introduced a correlation between the observed quark and the one at infinity, i.e. we are assuming some specific configuration of a degree of freedom which is not included in the statistical ensemble.

On the other hand, the w -average was defined precisely as the averaging procedure for which we make the least assumptions about the unobserved quark motion (other than the fact that it is uniform, which is required under the hypothesis that the system reaches a stationary state). Assuming maximal ignorance about the state of the shadow quark is the procedure that agrees with the holographic prescription of infalling boundary conditions at the string turning point, which we have used to compute the correlators.

We are therefore led to the statement that the confining trailing string description of the single quark system is consistent only under the *shadow quark hypothesis*: it is the limit of a very long quark-antiquark bound state where all correlation is lost since the pair formation, and no information has yet been able to travel from one quark to the other along the string. Under this hypothesis, the gravity dual gives a consistent boundary Langevin dynamics for the single quark. This discussion confirms our interpretation of the retarded correlator as the one defined by infalling conditions.

As a final remark, we have already noticed that the special configuration in which the trailing string is directed as the quark velocity, satisfies the drag force consistency condition, and in principle defines a consistent ensemble. We believe this is because it is possible to define the physical process in a way that it selects this configuration without introducing extra correlation between the two quarks: that is, if the quark-antiquark system is produced at rest and assumed to conserve momentum. In this case the string can only stretch along the direction of the velocity. This presumably gives a way of selecting a subset of possible physical states without assuming an arbitrary correlation between the observed and the shadow quark.

It would be interesting to find out whether there are other averaging procedures that give consistent Langevin dynamics, and to formulate general conditions which guarantee that (5.44) is satisfied.

6 The dressed Langevin correlators in the confining holographic theory

The aim of this section is to give the quantitative results about the Langevin correlators for a heavy quark moving through a gluon plasma. As was observed in [25], the correlators at finite temperature have a universal divergent behavior at high frequencies, that translates into an unphysical behavior in terms of time. It was argued in that paper, from first principles, that valid subtraction prescription is to consider the dressed correlator $G(\omega) -$

$G^{(\text{vac})}(\omega)$, where $G(\omega)$ is the correlator in a plasma at temperature T and $G^{(\text{vac})}(\omega)$ is the correlator in the vacuum.

In section 5.2 we indeed pointed out that the vacuum correlators for confining strings share the same high-frequency behavior as the black-hole correlators. The dressed correlator, defined as the difference of the two, is well behaved in the high-frequency regime. More precisely, it vanishes as $1/\omega$.

As opposed to the results in [23] for the non-confining strings, the vacuum correlators for confining strings display a non trivial low-frequency limit. We derived, in section 5.3, the friction constants for the different proposed averaging procedures. For generic velocities of the quark, these constants are non zero for all averaged correlators, while in the non-confining string case the friction coefficient vanishes in the vacuum. Therefore, the dressing method in the confining case also modifies the low-frequency limit, by shifting the coefficient of the linear term in ω .

In the remainder of this section, we will first obtain the dressed friction coefficient in generic models, then present the numerical results for the dressed correlators that give a consistent result for the drag force, as explained in section 5.4, namely for the w -averaged and $\theta = \pi$ correlators. To perform the numerical computations, we consider a probe quark with a large and finite mass M_q that implies a cutoff $r_q \sim 1/M_q$, close to $r = 0$, in our holographic description. More specifically, r_q is implicitly defined by $M_q = \frac{1}{2\pi\ell_s^2} \int_{r_q}^{r_*} dr b^2$, with $r_* = r_m$ at zero temperature and $r_* = r_h$ at finite temperature (the dependence of the quark mass on the temperature was analyzed in [22] for the confining Improved Holographic QCD model).

The results we present here can be derived for any asymptotically AdS background with IR expansion given by equation (2.12). We are interested in the case $a > 0$, that corresponds to confining theories at low temperatures. The UV expansion (including the case of finite temperature backgrounds) reads:

$$b(r) \simeq \frac{\ell}{r} h(r), \quad f(r) \simeq 1 - \frac{\mathcal{C}}{4} r^4, \quad \text{as } r \rightarrow 0. \quad (6.1)$$

The function $h(r)$ denotes the subleading contribution to the asymptotic expansion in the UV, as it was defined in [25]: $rh'/h \rightarrow 0$, as $r \rightarrow 0$. Moreover, it was shown in [35] that in five dimensions the constant \mathcal{C} is essentially the product of the entropy density s times the temperature T ,

$$\mathcal{C} = (M_P^3 V_3 N^2) sT, \quad (6.2)$$

where M_P is the 5-dimensional Plank mass, V_3 is the volume of the 3-dimensional space, N is the rank of the gauge group of the dual gauge theory.

6.1 Friction from the dressed correlators

As reminded above, the low-frequency behavior of the confining string correlators is non trivial and given by equations (5.37)–(5.38) and (5.40), in the w -averaging and fixed-angle cases, respectively.

We here recall the value for the friction coefficient in the black-hole background analyzed in [23], corresponding to the finite-temperature, deconfined, phase:

$$\eta_{bh}^{\parallel} = \frac{b_s^2}{2\pi\ell_s^2} \left(1 + 4v^2 \frac{b'_s}{b_s f'_s} \right), \quad (6.3)$$

$$\eta_{bh}^{\perp} = \frac{b_s^2}{2\pi\ell_s^2}, \quad (6.4)$$

with $b_s = b(r_s)$ (r_s is the worldsheet horizon and was defined at the beginning of section 4 by the equation $f(r_s) = v^2$) and similarly for b'_s, f'_s . For the dressed correlators, we obtain the friction constants by subtracting the values of the black-hole and vacuum coefficients.

These expressions for the renormalized friction coefficients are valid in the infinite mass approximation. Should we consider a moving quark with finite mass, the vacuum value would be zero, as argued in section 6.3, and the result would just be the finite temperature values obtained in [23].

w-average. Averaging over the velocities of the shadow quark we obtain the renormalized friction constants,

$$\eta_w^{\parallel} = \frac{\gamma^2}{2\pi\ell_s^2} \left[b_s^2 \left(1 + 4v^2 \frac{b'_s}{b_s f'_s} \right) \frac{1}{\gamma^2} - \frac{\tilde{A}(v)}{\gamma^2} b_m^2 \right], \quad (6.5)$$

$$\eta_w^{\perp} = \frac{1}{2\pi\ell_s^2} \left[b_s^2 - \left(1 - \frac{\tilde{A}(v)}{2\gamma^2} \right) b_m^2 \right]. \quad (6.6)$$

Since r_m is the location of the minimum of the scale factor, b_m and b_s are at most of the same order and, as the temperature or the velocity increases, b_s becomes larger and larger with respect to b_m . Moreover, we note that the factor $1 - \tilde{A}/2\gamma$ is never larger than unity, and it equals 1 at $v = 1$ (See figure 9 (a)). Hence $\eta_w^{\perp} > 0$ for all velocities, as shown by the plot in figure 9 (b). In these plots, we normalized η_w^{\perp} by the factor $\sigma_s \equiv b_s^2/(2\pi\ell_s^2)$ that corresponds to the value of the friction coefficient at finite temperature, and is related to the effective string tension by $\sigma_s = \sigma_c(b_s/b_m)^2$.

Since $\tilde{A}(v)/\gamma^2$ is non-negative and bounded from above by the value $\tilde{A}(0) = 2/3$, as shown by the plot in figure 8, also η_w^{\parallel} is always positive.

In fact, the factor $\tilde{A}(v)$ in η_w^{\perp} diverges logarithmically in the ultra-relativistic limit but $\tilde{A}(v)/\gamma^2$ vanishes. This means that the contribution from the vacuum correlators are sub-leading for ultra-relativistic quarks (b_s is divergent, $b_s \sim (\ell\pi T)^2\gamma$). In this approximation, $r_s \rightarrow 0$ and we can use the expansion of the asymptotic AdS region. In particular we know that $(1 + 4v^2 b'/(bf')) \rightarrow \gamma^2$ close to the boundary. The expressions (6.5)–(6.6) read

$$\eta_w^{\parallel} \simeq \gamma^2 \eta_w^{\perp} \simeq \frac{\ell^2}{4\pi\ell_s^2} h_s^2 \mathcal{C}^{\frac{1}{2}} \gamma^3, \quad \text{as } v \rightarrow 1. \quad (6.7)$$

The function $h(r)$ defined in (6.1) appears through the factor $h_s = h(r_s)$ in (6.5) (it depends on the specific model) and \mathcal{C} is given by equation (6.2).

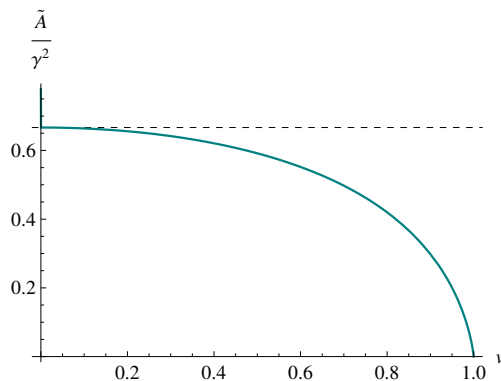


Figure 8. In 8 we observe that the function $\tilde{A}(v)$ diverges logarithmically as $v \rightarrow 1$, so that $\tilde{A}(v)/\gamma^2$ vanishes in this limit and is a monotonically decreasing function bounded from above by the value at $v \rightarrow 0$, $\tilde{A}(0) = 2/3$.

Fixed angle. For the configuration in which the quark is dragged in the direction of the velocity, the result is

$$\eta_{\pi}^{\parallel} = \frac{b_s^2}{2\pi\ell_s^2} = \eta_{bh}^{\parallel}, \tag{6.8}$$

$$\eta_{\pi}^{\perp} = \frac{1}{2\pi\ell_s^2} \left[b_s^2 \left(1 + 4v^2 \frac{b'_s}{b_s f'_s} \right) - b_m^2 \right] = \eta_{bh}^{\perp} - \sigma_c. \tag{6.9}$$

For the confining string parallel to the velocity, the friction constant are manifestly positive, since $b_s > b_m$ in the black-hole background above the critical temperature.

Also in this case, the ultra-relativistic asymptotics are given by equation (6.7), because the subtracted terms are subleading in this limit.

6.2 Dressed Langevin correlators in Improved Holographic QCD

The analysis up to this point has been completely general. Here, we give concrete numerical results in the case of the Improved Holographic QCD model, i.e. the 5-dimensional dilaton-gravity model described in [36], and already used to compute the bare Langevin correlators in [23]. This model has the virtue of being confining, conformal at high energy, and displaying a first order deconfining phase transition at finite temperature. Moreover, it was shown in [36] to reproduce quite accurately the thermodynamics and low-lying glueball spectrum of pure Yang-Mills theory, and is a good candidate for a phenomenological study of quark diffusion through a plasma in the context of holography.

First, we look at the effect of the contribution of the subtraction to the low-frequency diffusion constant η . This is displayed in figure 9. As we can see, the effect of the subtraction is quite important at small velocities, but it is almost negligible as the quark velocity approaches unity. As the heavy quark probes encountered in heavy ion collision experiments are in the ultra-relativistic regime, this result indicates that the subtraction has a negligible effect when comparing the holographic computation of the diffusion coefficient with experimental results.

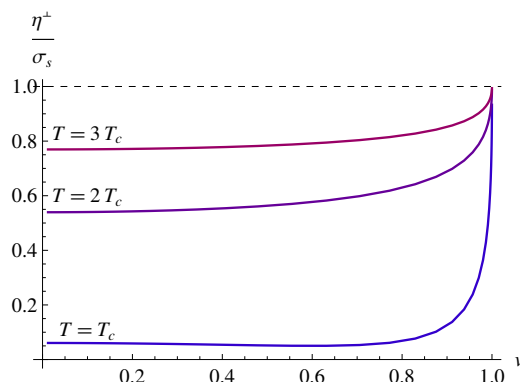


Figure 9. The drag coefficient for the directions transverse to the velocity, normalized by the bare drag coefficient $\sigma_s \equiv b_s^2/(2\pi\ell_s^2)$, is plotted as a function of the velocity for $T = T_c, 2T_c, 3T_c$: as the temperature or the velocity grow, η^\perp approaches the finite temperature result σ_s . A similar plot holds for η^\parallel/γ^2 .

Next, we discuss the full dressed correlators. The correlators we present here are computed by giving the quarks a finite mass, thus in both the black hole and confining case the string endpoint is taken to lie at a finite radius r_q . In the ultra-relativistic limit $p \gg M_q$, which is the situation most relevant for heavy ion experiments, r_q is related to the quark mass by [23]

$$r_q \simeq \frac{\ell^2}{2\pi\ell_s^2} \frac{h_q^2}{M_q}, \tag{6.10}$$

where $h_q = h(r_q)$, and $h(r)$ is defined in equation (6.1).

The applicability of the results of the previous sections in the case of a finite mass can be problematic in certain regions of parameter spaces (namely, very low frequencies, and very high frequencies and momenta). These issues, and the range of validity of the results presented here, will be discussed at greater length in the next subsection.

6.2.1 Dressed correlators with fixed shadow quark

The results for the dressed correlators obtained using a fixed angle, $\theta = \pi$, defining the confining trailing string to be antiparallel with respect to the velocity are shown in figure 10, where we compare dressed correlators corresponding to different temperatures of the plasma (same quark mass and velocity), figure 10b, or different momenta for the moving quark (same temperature and quark mass), figure 10a, or else different quark mass, namely Charm and Bottom (same plasma temperature and same momenta), figure 10c.

These plots are obtained by numerically solving the equations for the imaginary part of the correlators, using the membrane paradigm (see equation (4.28) in [23]). The equation is a first order non linear differential equation with regularity condition in the infrared (at the worldsheet horizon, for finite temperature, and at the scale factor minimum r_m for the confining phase). The results for finite temperature were already discussed in [23], where the correlators have been computed for a non-conformal background, using the second-order fluctuation equations. In [25] the dressed correlator was computed for conformal and

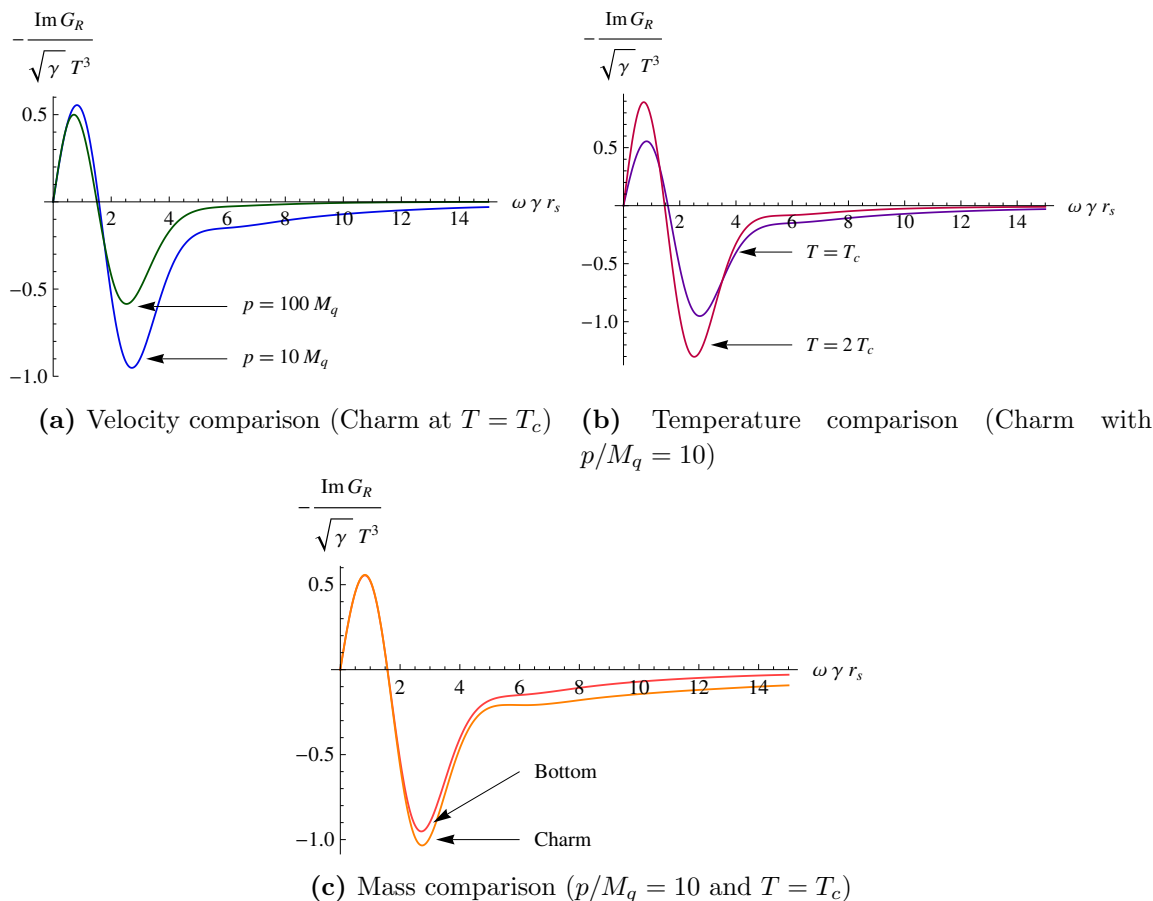


Figure 10. The imaginary part of the dressed retarded correlators, for different values of the temperature, momentum and mass, obtained by fixing the direction of the confining string to be (anti)parallel to the quark velocity.

scaling backgrounds, where the zero-temperature classical world-sheet configuration is just a straight string.

Here we compute the confining Langevin correlators G^T , as defined in equation (5.6), and use equation (5.25), to obtain the dressed correlator by subtracting G^T from the finite-temperature result for the transverse modes:

$$G_\pi^\perp(\omega; T) = G^\perp(\omega; T) - G^T(\omega). \quad (6.11)$$

In figure 10 we show the correlators normalized by the factor $\sqrt{\gamma T^3}$ as a function of the dimension-less frequency $\omega_s \equiv \gamma \omega r_s$. The normalization factor encodes the dependence on the velocity and temperature of the finite temperature correlator at small frequencies (in the conformal limit). In fact, at small frequencies and for the velocities under consideration (momenta such that $p/M_q \gtrsim 5$ correspond to ultra-relativistic velocities, $v \gtrsim .98$), the dressed correlator behaves as

$$\text{Im } G_\pi \simeq -\pi T_s \omega_s \eta_{bh}, \quad (6.12)$$

where T_s is the world-sheet black-hole temperature

$$T_s = \frac{1}{4\pi} \sqrt{f f' \left(\frac{4b'}{b} + \frac{f'}{f} \right)} \Big|_{r_s} \simeq \frac{T}{\sqrt{\gamma}}, \quad \text{for } v \rightarrow 1. \quad (6.13)$$

Using (6.9) and $r_s \simeq 1/(\pi\sqrt{\gamma}T)$ in the ultra-relativistic approximation, we can evaluate

$$\text{Im } G_\pi^\perp \simeq -\frac{\ell^2}{\ell_s^2} \frac{\pi^2}{2} h_s^2 \omega_s \sqrt{\gamma} T^3, \quad (6.14)$$

where $h(r)$ is the subleading contribution as defined in (6.1).

6.2.2 Dressed correlators averaged over the shadow quark velocity

The discussion for the w -averaged correlators follows from the fixed-angle case, since, as we will argue below, the extra contributions that would arise from the longitudinal correlator G^L can be neglected for relativistic velocities of the quark, and the expression for the renormalized transverse correlator reduces to (6.11).

The general expression for the renormalized correlator in the w -average framework is simply derived using (5.23):

$$G_w^\perp(\omega; T) = G^\perp(\omega; T) - \left(1 - \frac{\tilde{A}(v)}{2\gamma^2} \right) G^T(\omega) - \frac{\tilde{A}(v)}{2\gamma^2} \frac{G^L(\omega)}{\gamma^2}. \quad (6.15)$$

As we argued in subsection 6.1, the coefficient $\tilde{A}(v)/\gamma^2$ is very small for large velocities. More precisely, for the velocities corresponding to momenta $p/M \gtrsim 10$, i.e. $v \gtrsim .995$, we can evaluate $\tilde{A}(v)/(2\gamma^2) \lesssim .02$ and starts becoming sensible for momenta smaller than $p \simeq 3M$ (correspondingly, $v \simeq .95$ in fact yields $\tilde{A}(v)/(2\gamma^2) \simeq .1$, as we can also guess from figure 8).

So the plots in figure 10 hold without relevant changes also for the w -averaged correlators $G_{R,w}^\perp$, given that for large momenta $\tilde{A}(v)/(2\gamma^2) \ll 1$, $G^L \simeq \gamma^2 G^T$, and

$$G_w^\perp(\omega; T) \simeq G^\perp(\omega; T) - G^T(\omega) = G_\pi^\perp(\omega; T). \quad (6.16)$$

6.3 Effects of a finite quark mass, and limits of applicability of the Langevin approach

Throughout this work we considered the confining trailing string as a semi-infinite string attached to a boundary point, and extending indefinitely in one of the spatial direction. However, in physical situations where the quark has a finite mass M_q , the string cannot be considered truly infinite: when the string reaches a certain critical length, it becomes unstable to breaking and producing another quark-antiquark pair. Roughly, for a heavy quark of mass M_q , the maximal length of the string is given by

$$L_{\max} \approx \frac{2\gamma M_q}{\sigma_c} \quad (6.17)$$

where σ_c is the confining string tension and $2M_q$ should be replaced by the chiral condensate Λ_χ , for the case of light quarks, as discussed in section 1.4. Therefore, for finite quark mass,

the “shadow” quark is at a large but finite distance, and starts influencing the dynamics after a time of order L_{\max} from the initial perturbation. The corresponding trailing string solution has a regular turn-around point at $r_0 < r_m$.

The finite length L_{\max} of the string acts as an infrared cutoff that effectively prevents dissipation from affecting modes of frequency smaller than $\sim 1/L_{\max}$. Indeed, consider a situation in which we want to observe the response of the endpoint quark to a perturbation at $t = 0$. Since we are interested in a retarded response, the influence of the shadow quark endpoint will not be felt until a time $t \sim L_{\max}$, when the fluctuation has had time to propagate the full length of the string. At earlier times the solution will be a travelling (infalling) wave going from the first to the second endpoint. After a time of the order L_{\max} however, the fluctuation has traveled the full length of the string and we have to take into account the boundary conditions that have to be imposed on the second endpoint. Possible choices include for example keeping the second endpoint fixed (Dirichlet) or setting to unity the wave function at the second endpoint. But no matter which boundary condition we chose, the problem we are now solving is that of a wave equation along a string with one condition at each endpoint, and the wave-function for this problem is necessarily a real *standing* wave, which carries no flux. As a consequence, for $t \gtrsim L_{\max}$, the imaginary part of the retarded correlator vanishes, and the length of the string L_{\max} acts as a large-time, or small frequency cut-off.

Therefore, in practice, also for the transverse fluctuations the true retarded correlator in the vacuum background is strictly zero at frequencies smaller than $1/L_{\max}$, resulting in a vanishing diffusion constant. In other words, equation (1.12) is valid, strictly speaking, only in the limit $M_q \rightarrow \infty$. For a finite M_q on the other hand, we will have $\text{Im } G^\perp(\omega) \equiv 0$ when $\omega < 1/L_{\max}$. In particular, for any finite-mass quark the vacuum subtraction does not contribute to the diffusion constant, which is obtained in the zero-frequency limit of $\text{Im } G^\perp(\omega)$. Moreover, the correlators we have computed from the confining trailing string solutions are reliable only above the infrared cutoff provided by L_{\max} , i.e. for

$$\omega \gtrsim \omega_{\min} \equiv \frac{\sigma_c}{2\gamma M_q}, \tag{6.18}$$

or the improved bound with $2M_q$ replaced by the chiral condensate in the presence of light quarks.

On the other end of the frequency spectrum, a finite quark mass also implies a UV cutoff. Indeed, as shown in [25], for a finite quark mass the applicability of the Langevin description obtained holographically does not extend to infinitely high frequency, but rather it is limited by the condition

$$\omega\gamma r_q < 1. \tag{6.19}$$

The reason is that, when this bound is violated, the effective boundary action for the moving quark fails to be of the form appropriate for a relativistic particle, thus one cannot write the simple relativistic Newton’s equation with (generalized) friction and stochastic noise forces. Using the relation (6.10) between r_q and the quark mass, the condition (6.19)

can be rewritten as the upper bound:

$$\omega < \omega_{\max} \equiv 2\pi h_q^{-2} \left(\frac{\ell_s}{\ell}\right)^2 \frac{M_q}{\gamma}. \tag{6.20}$$

Therefore, the range of ω we are describing must lie in the range between the lower bound (6.18) and the upper bound (6.20).

Finally, a finite quark mass also imposes an upper bound on the quark momentum: recall that, in the thermal background, the trailing string solution has a world-sheet horizon r_s , whose position moves towards the boundary as the quark velocity is increased. The trailing string solution becomes a bad approximation when r_s becomes equal or smaller to the endpoint of the quark r_q , which happens for large enough quark momentum p . In the ultra-relativistic limit, $r_s \simeq (\pi\sqrt{\gamma}T)^{-1}$, with $\gamma \simeq p/M_q$, and the constraint $r_s > r_q$ becomes an upper bound on the quark momentum in terms of the asymptotic background geometry, quark mass, and temperature:

$$p < p_{\max} \equiv 4M_q \left(\frac{M_q}{T}\right)^2 \left(\frac{\ell_s}{\ell}\right)^4 h_q^{-4}, \tag{6.21}$$

Before we present numerical estimates of these bounds in the concrete example of IHQCD, for the sake of completeness we recall what is the regime in which the local Langevin description (1.1) is appropriate, and one does not need to use the full correlators. As discussed in [23], this condition is that the thermal correlation time, (i.e. the width of the correlators, controlled by the world-sheet temperature T_s) is much smaller than the relaxation time (roughly, the integrated correlators, controlled by the diffusion constant η_{bh}). Concretely, this condition translates into $T_s \ll \eta_{bh}$, as showed in [23], and it depends on p both through the dependence in T_s and the one in η_{bh} . In the ultra-relativistic regime, the local Langevin equation holds if we work under the condition

$$p \ll \frac{p_{\max}}{\pi^2}. \tag{6.22}$$

This is in fact almost the same bound as in (6.21), except for the factor of $1/\pi^2$. Notice that if the local Langevin equation (1.1) is valid, the consistency condition for the holographic description, equation (6.21), is automatically satisfied. On the other hand, in the non-local regime where we have to use the generalized Langevin equation (1.2), equation (6.22) is not satisfied, and condition (6.21) is non trivial.

The bounds discussed in this section are displayed graphically in figures 11 and 12 for charm and bottom quarks, as computed in the specific IHQCD model we are considering here. In figures 11a and 11b, the empty region in the $p - T$ plane is the one in which the holographic description via classical trailing string plus fluctuations breaks down, for charm and bottom quark respectively. In those figures we also show the regions in which either the local or the generalized Langevin equation should be used [23]. While the local regime stays valid even for high momenta in the case of a bottom quark, it is clear from figure 11a that the diffusion of charm quarks through the quark-gluon plasma produced at LHC has to be described by the generalized Langevin equation, according to our analysis.

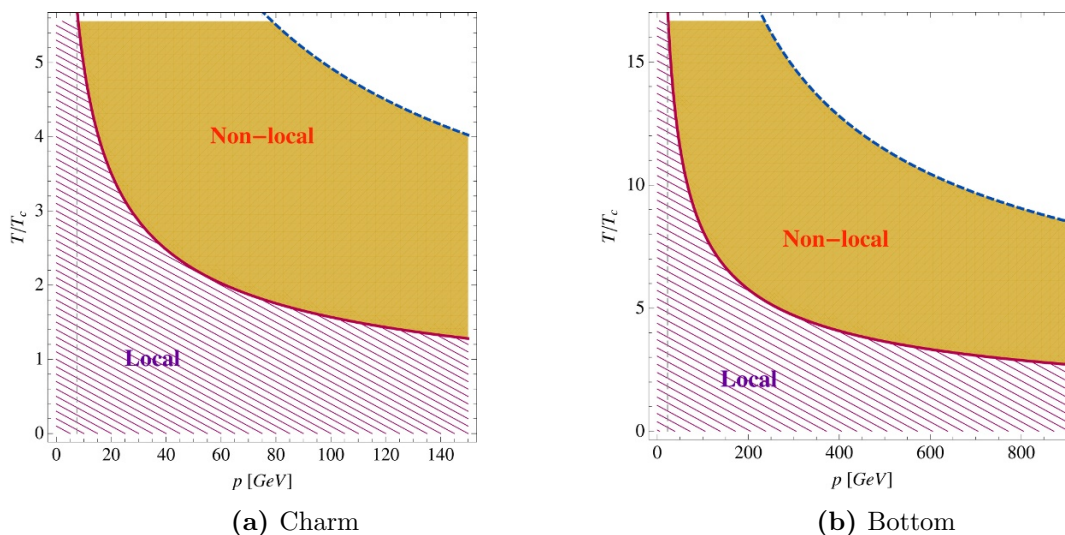


Figure 11. Validity of the local and non-local regime for Langevin diffusion. The red plain curve represents the right hand side of equation (6.22), and the blue dashed curve is the bound (6.21).

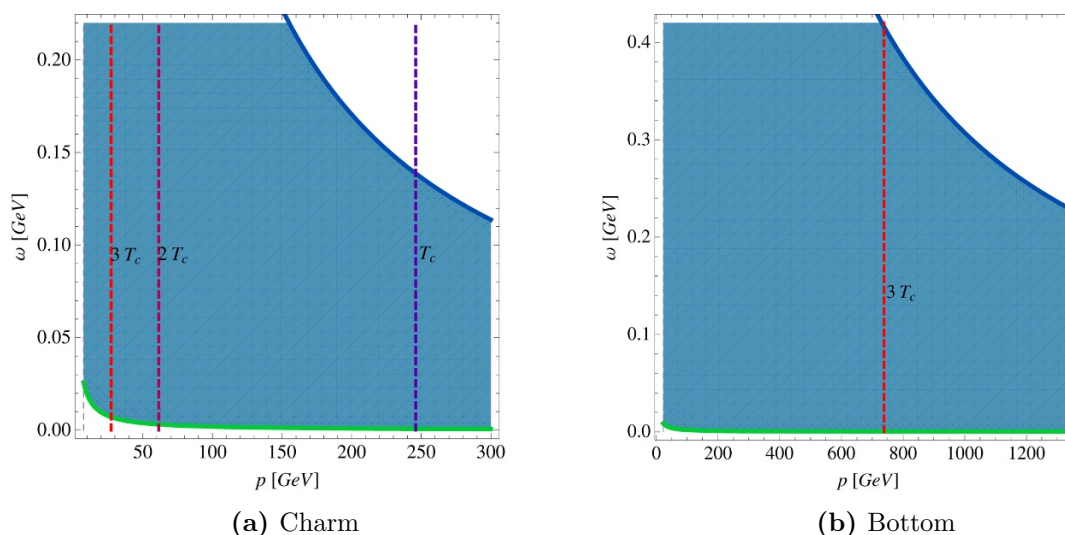


Figure 12. Allowed frequency range for our trailing string picture. The blue curve represents the upper bound on the frequency (6.20), while the green curve is the lower bound (6.18). The vertical (dashed) lines represent the bound (6.22). For momenta higher than these lines, only the generalized Langevin equation should be used, at each indicated temperature.

On the other hand, the frequency range allowed by the bounds (6.18) and (6.20) is graphically represented in figure 12, as a function of the momentum. The vertical lines represent the momenta above which the local Langevin regime breaks down and the full correlator should be used, for three temperatures $T = T_c, 2T_c, 3T_c$.

Acknowledgments

We would like to thank Jan de Boer, Alfonso Ramallo and Jacob Sonnenschein for discussion and comments.

This work was supported in part by ESF Holograv Network Short Visit Grant n. 5007, European Union’s Seventh Framework Programme under grant agreements (FP7-REGPOT-2012-2013-1) n. 316165, PIF-GA-2011-300984, the EU program “Thales” MIS 375734, the European Commission under the ERC Advanced Grant BSMOXFORD 228169, and the program “AdS - CMT - Holography and Condensed Matter Physics” (ERC - 05), MIS 374071, which was co-financed by the European Union (European Social Fund, ESF) and Greek national funds through the Operational Program “Education and Lifelong Learning” of the National Strategic Reference Framework (NSRF) under “Funding of proposals that have received a positive evaluation in the 3rd and 4th Call of ERC Grant Schemes”.

This work is part of the D-ITP consortium, a program of the Netherlands Organisation for Scientific Research (NWO) that is funded by the Dutch Ministry of Education, Culture and Science (OCW).

A Black-hole trailing string revisited

The scope of this short appendix is to clarify why in the black hole there is a preferred direction in which the trailing string bends. We remind that the action in that case is

$$S = -\frac{1}{2\pi\ell_s^2} \int dt dr b^2 \sqrt{(f - |\vec{v}|^2)(f^{-1} + |\vec{\xi}'|^2) + (\vec{v} \cdot \vec{\xi}')^2}. \quad (\text{A.1})$$

If the vector ξ is arbitrary it is convenient to introduce two variables, χ and χ_\perp , defined by $\chi' = \sqrt{|\vec{\xi}'|^2}$ and $\chi'_\perp \equiv \sqrt{\chi'^2 - (\vec{v} \cdot \vec{\xi}')^2}$. The action then takes the form

$$S = -\frac{1}{2\pi\ell_s^2} \int dt dr b^2 \sqrt{1 - \frac{f}{v^2} + f\chi'^2 + v^2\chi_\perp'^2}. \quad (\text{A.2})$$

Note that when $\chi_\perp = 0$ this reduces to the usual computation where the ansatz for the trailing string describes a string only laying along the direction of the velocity. We can find χ and χ_\perp by solving the equations of motion, $\pi_\chi = C_\chi$ and $\pi_{\chi_\perp} = C_{\chi_\perp}$, yielding

$$\chi' = C_\chi \frac{\sqrt{f - v^2}}{f \sqrt{b^4 f - \left(C_\chi^2 - \frac{f}{v^2} C_{\chi_\perp}^2\right)}}, \quad \chi'_\perp = C_{\chi_\perp} \frac{\sqrt{f - v^2}}{v^2 \sqrt{b^4 f - \left(C_\chi^2 - \frac{f}{v^2} C_{\chi_\perp}^2\right)}}. \quad (\text{A.3})$$

Moreover, the onshell action reads

$$S = -\frac{1}{2\pi\ell_s^2} \int dt dr b^2 \sqrt{\frac{f - v^2}{b^4 f - \left(C_\chi^2 - \frac{f}{v^2} C_{\chi_\perp}^2\right)}}. \quad (\text{A.4})$$

For the action to be regular at the world-sheet horizon r_s , where $f(r_s) = v^2$, we have to impose that

$$C_\chi^2 - \frac{C_{\chi\perp}^2}{v^2} = b_s^4 v^2 \equiv C^2, \tag{A.5}$$

with $b_s = b(r_s)$. This relation still leaves $C_{\chi\perp}$ arbitrary within the range $0 \leq C_{\chi\perp} < v^2 C_\chi$ (this range excludes the case where the string is orthogonal to the velocity direction, which is not consistent since it would imply $C = 0$ for finite v).

However, the difference with the zero-temperature case is that here the on-shell action does depend on the two parameters C and $C_{\chi\perp}$. In other words, the dependence on C_χ and $C_{\chi\perp}$ does not appear in the combination that defines C , where C is fixed by the regularity condition. Indeed, we can rewrite the on-shell action as

$$S = -\frac{1}{2\pi\ell_s^2} \int dt dr b^2 \sqrt{\frac{f - v^2}{b^4 f - C^2 - \frac{1-f}{v^2} C_{\chi\perp}^2}}. \tag{A.6}$$

It is a regular action that converges in the IR and it is minimized by the lowest possible value for $C_{\chi\perp}$, i.e. $C_{\chi\perp} = 0$, just as in the zero-temperature AdS case $C = 0$ minimizes the world-sheet action. At zero temperature $f \equiv 1$ and the term containing $C_{\chi\perp}$ vanishes. Finally, $C_{\chi\perp} = 0$ means that the string trails bending in the direction of the velocity, as expected.

B Background and fluctuations for the trailing string in the general case

We now consider a classical string attached to the boundary and bending in an arbitrary direction, with the end-point moving at velocity \vec{v} with components v^i :

$$X^i = v^i t + \xi^i(r), \quad i = 1, 2, 3. \tag{B.1}$$

B.1 Classical solution

The induced world-sheet metric and the classical world-sheet action then become

$$g_{ab} = b^2 \begin{pmatrix} -(1 - |\vec{v}|^2) & \vec{v} \cdot \vec{\xi}' \\ \vec{v} \cdot \vec{\xi}' & 1 + |\vec{\xi}'|^2 \end{pmatrix}, \tag{B.2}$$

$$S = -\frac{1}{2\pi\ell_s^2} \int dt dr b^2 \sqrt{(1 - |\vec{v}|^2)(1 + |\vec{\xi}'|^2) + (\vec{v} \cdot \vec{\xi}')^2}, \tag{B.3}$$

The classical solution for $\vec{\xi}$ can be derived using χ and ν defined by

$$\chi' = |\vec{\xi}'|, \quad \nu = \vec{v} \cdot \vec{\xi}'. \tag{B.4}$$

The action only depends on the r -derivative of χ and ν , yielding the solutions

$$\chi' = \frac{C_\chi}{\sqrt{b(r)^4 - C^2}}, \quad \nu' = \frac{C_\nu}{\sqrt{b(r)^4 - C^2}}. \tag{B.5}$$

with $C_\zeta^2 = (1 - |\vec{v}|^2)(C^2 - C_\chi^2)$. In the Cartesian frame ξ^i this translates into the solution

$$\xi^i = \frac{c^i}{\sqrt{b(r)^4 - C^2}}, \quad |\vec{c}|^2 + \frac{(\vec{v} \cdot \vec{c})^2}{1 - |\vec{v}|^2} = C^2. \quad (\text{B.6})$$

The on-shell action then reads

$$S = -\frac{1}{2\pi\ell_s^2} \frac{1}{\gamma} \int dt dr \frac{b^4}{\sqrt{b(r)^4 - C^2}}, \quad (\text{B.7})$$

with $\gamma = (1 - |\vec{v}|^2)^{-1/4}$. It only depends on C , leaving two free coefficients out of the three c^i , which are related to the angles that the confining trailing string forms with the velocity. C has to be set to $C = b(r_m)^2 \equiv b_m^2$ in order to minimize the action.

B.2 Fluctuations

We can now fluctuate the ansatz (B.1), by writing

$$X^i = v^i t + \xi^i(r) + \delta X^i(r, t). \quad (\text{B.8})$$

To second order in the fluctuations, the action reads:

$$S = -\frac{1}{2\pi\ell_s^2} \int dt dr \frac{1}{2} \mathcal{G}_{ij}^{ab} \partial_a \delta X^i \partial_b \delta X^j, \quad (\text{B.9})$$

where the \mathcal{G}_{ij}^{ab} are obtained by expanding the world-sheet action:

$$\mathcal{G}_{ij}^{ab} = \frac{b^4}{\sqrt{-\det g_{ab}}} \left[b^2 g^{ab} \Xi_{ij} - 2\epsilon^{ab} \alpha_{ij} \right]. \quad (\text{B.10})$$

Here Ξ_{ij} and α_{ij} are respectively symmetric and antisymmetric:

$$\begin{aligned} \Xi_{ij} = & \left[(1 - |\vec{v}|^2)(1 + |\vec{\xi}'|^2) + (\vec{v} \cdot \vec{\xi}')^2 \right] \delta_{ij} + \\ & + (1 + |\vec{\xi}'|^2) v_i v_j - (\vec{v} \cdot \vec{\xi}') (v_i \xi'_j + v_j \xi'_i) - (1 - |\vec{v}|^2) \xi'_i \xi'_j, \end{aligned} \quad (\text{B.11})$$

$$\alpha_{ij} = v_i \xi'_j - v_j \xi'_i. \quad (\text{B.12})$$

In the absence of α_{ij} —e.g. at zero velocity or when the classic string is assumed to bend in the direction of the velocity— \mathcal{G}_{ij}^{ab} is proportional to g^{ab} ; hence diagonalizing the induced metric, implies that also \mathcal{G}_{ij}^{ab} is diagonal in the a, b indices. In the general case where the string can bend in an almost arbitrary direction (only constrained by the fixed value of C), α_{ij} is non-zero. However, as we will later show more explicitly, if the antisymmetric part of \mathcal{G}_{ij}^{ab} is constant in r , it becomes a topological term in the action and hence does not contribute to the equations of motion. We can already anticipate that, indeed, this is the case, since $b^4 \alpha_{ij} / \sqrt{-\det g_{ab}}$ can be easily shown to be r -independent using the worldsheet background solution (B.6).

The equations for the fluctuations read:

$$\partial_a \left[\mathcal{G}_{ij}^{ab} \partial_b \delta X^j \right] = 0. \quad (\text{B.13})$$

These are coupled equations for the fluctuations δX^i . We note that it is not possible to diagonalize \mathcal{G}_{ij} , unless \vec{v} and $\vec{\xi}'$ are parallel (as in the black hole case) or $\vec{v} = 0$.

Indeed, this can be seen by decomposing $\delta\vec{X}$ on a suitable basis

$$\delta\vec{X} = \delta X_v \vec{v} + \delta X_\xi \vec{c} + \delta X_n \vec{n}, \quad (\text{B.14})$$

where \vec{n} is a vector that lays in direction transverse to the plane formed by \vec{v} and $\vec{\xi}'$ and \vec{c} is the vector pointing in the direction of $\vec{\xi}'$, as shown in equation (B.6). Were \vec{v} and $\vec{\xi}'$ parallel, the fluctuations would be decomposed into a longitudinal and transverse part with respect to the string, $\delta X^\parallel = \delta X_\xi$, and $\delta X^\perp = \delta X_n$. The equations would decouple, as in the black hole background.

In general one can show that Ξ_{ij} and α_{ij} cannot be diagonalized simultaneously. In fact, α_{ij} has purely imaginary eigenvalues, if \vec{v} and $\vec{\xi}'$ are not parallel

$$\mu_\pm = \pm \sqrt{(\vec{v} \cdot \vec{\xi}')^2 - |\vec{v}|^2 |\vec{\xi}'|^2}, \quad \mu_n = 0, \quad (\text{B.15})$$

where μ_n is the eigenvalue corresponding to the vector transverse to the $\vec{v}, \vec{\xi}'$ plane. On the other hand Ξ_{ij} has real eigenvectors

$$\lambda_\pm = \frac{1}{2} \left[2 - |\vec{v}|^2 + |\vec{\xi}'|^2 \pm \sqrt{(-|\vec{v}|^2 + |\vec{\xi}'|^2)^2 - 4 \left((\vec{v} \cdot \vec{\xi}')^2 - |\vec{v}|^2 |\vec{\xi}'|^2 \right)} \right], \quad (\text{B.16})$$

$$\lambda_n = \left[(1 - |\vec{v}|^2)(1 + |\vec{\xi}'|^2) + (\vec{v} \cdot \vec{\xi}')^2 \right] = -\frac{\det g_{ab}}{b^4}. \quad (\text{B.17})$$

Here λ_n is the eigenvalue corresponding to \vec{n} . While α_{ij} has eigenvectors with one imaginary component and a real one, Ξ_{ij} has completely real eigenvectors, as for the \vec{v}, \vec{c} system. The transverse vector \vec{n} is eigenvector for both Ξ_{ij} and α_{ij} and can be decoupled, as expected.

We will then have two coupled equations for δX_v and δX_ξ and one decoupled equation for δX_n

$$\partial_a \left\{ g^{ab} \frac{b^6}{R} \partial_b \delta X_n \right\} = 0, \quad (\text{B.18})$$

$$\partial_a \left\{ g^{ab} b^2 R \left[\left(1 + \frac{c_\perp^2}{R^2} \right) \partial_b \delta X_v + \frac{c_\parallel}{v} \partial_b \delta X_\xi \right] - \epsilon^{ab} c_\perp^2 \partial_b \delta X_\xi \right\} = 0, \quad (\text{B.19})$$

$$\partial_a \left\{ g^{ab} b^2 R \left[\frac{(1 - v^2) C^2}{v^2} \partial_b \delta X_\xi + \frac{c_\parallel}{v} \partial_b \delta X_v \right] + \epsilon^{ab} c_\perp^2 \partial_b \delta X_v \right\} = 0, \quad (\text{B.20})$$

with

$$c_\perp^2 = \frac{1}{|\vec{v}|^2} [|\vec{v}|^2 |\vec{c}|^2 - (\vec{v} \cdot \vec{c})^2], \quad c_\parallel = \frac{1}{|\vec{v}|} \vec{v} \cdot \vec{c}, \quad (\text{B.21})$$

and $R \equiv \sqrt{b^4 - C^2}$. To simplify notation we write $|\vec{v}|$ as v and similarly for $|\vec{c}|$, $c^2 = c_\perp^2 + c_\parallel^2$. The relation between \vec{c} and C in (B.6) translates into

$$C^2 = c_\perp^2 + \frac{c_\parallel^2}{1 - v^2}. \quad (\text{B.22})$$

Given that the term proportional to ϵ^{ab} in (B.19)–(B.20) is constant in r (and t), we note that the off-diagonal components in the indices a, b coming from this term have to vanish due to symmetry. In other words, as we noted earlier, this term is topological and contribute only boundary terms to the worldsheet action.

Diagonalizing the induced metric by a suitable change in the time coordinate, $t \rightarrow \tau = t - \zeta(r)$, with $\zeta' = -g_{tr}/g_{tt}$, leads, after some manipulations, to the following set of decoupled equations:

$$\partial_r [R \partial_r \delta X^T] + \gamma^2 \omega^2 \frac{b^4}{R} \delta X^T = 0, \tag{B.23}$$

$$\partial_r \left[\frac{R^3}{b^4} \partial_r \delta X^L \right] + \gamma^2 \omega^2 R \delta X^L = 0, \tag{B.24}$$

with

$$\delta X^T = \delta X_n, \delta X_v, \quad \delta X^L = \delta X_c \equiv \delta X_\xi + \frac{vc_{\parallel}}{(1-v^2)C^2} \delta X_v. \tag{B.25}$$

C Correlators from the confining trailing string

The aim of this section is to obtain the zero-temperature correlators that have to be subtracted from the finite-temperature results. For sake of comparison to the finite-temperature setup, we have to derive the correlators G_{ij} in the orthonormal basis with $i, j = 1, 2, 3$, where

$$X^1 = vt + \xi^1 + \delta X^1, \quad X^2 = \xi^2 + \delta X^2, \quad X^3 = \xi^3 + \delta X^3, \tag{C.1}$$

and the ξ^i 's are given by (4.14), while the δX^i 's will be linear combinations of the transverse and longitudinal wave functions solving (B.23) and (B.24) respectively.

The classical solution for the confining trailing string (4.14) is characterized by two free parameters that identify the string collective coordinates. We will discuss below how to obtain consistent correlators that do not depend on them. These “integrated” correlators will be the correct candidates for the subtraction yielding the finite-temperature dressed correlators.

The string collective coordinates can be chosen among the c^i 's that have to obey to the relation in (4.14). Alternatively, we can redefine them in terms of two angles, θ and φ , being θ the angle between the string and the velocity (that can be chosen to lie entirely on the x_1 axe) and φ the angle between the string projection on the plane orthogonal to the velocity and one axe in this plane (that, for instance, can be chosen to be x_3). This redefinition turns out to be useful to analyze the confining trailing string correlators. The relation between $\{c^i\}$ and $\{\theta, \varphi\}$ is simply

$$c^1 = |c| \cos \theta, \quad c^2 = |c| \sin \theta \cos \varphi, \quad c^3 = |c| \sin \theta \sin \varphi. \tag{C.2}$$

We also obtain

$$|c| = \sqrt{\frac{1-v^2}{1-v^2 \sin^2 \theta}} C, \tag{C.3}$$

where we made use of the relation in (4.14) between c and C . If $\theta = 0$ the classical string formally reduces to the finite-temperature trailing string solution (provided that we substitute r_m with r_s , T_m with T_s), where the string only lies in the direction of the velocity. Since for the confining trailing string θ and φ are arbitrary, we shall integrate over them, as we will shortly describe in detail.

With this setup, the string fluctuations, δX^i 's, will generally depend on θ and φ . However, from the previous section, we know that we can choose the $\delta X_v, \delta X_c, \delta X_n$ (non orthogonal) modes. These solve decoupled θ - and φ -independent equations that reduce to the transverse and longitudinal finite-temperature fluctuation equations, provided that now $C = b_m^2$, rather than $C = vb_s^2$. For future convenience, we normalize them in a suitable way and define:

$$\begin{aligned} \delta \hat{X}^v &= \frac{c}{C} \sin \theta v \delta X_v = \sqrt{\frac{1-v^2}{1-v^2 \sin^2 \theta}} \sin \theta v \delta X_v, \\ \delta \hat{X}^c &= C \delta X_c, \quad \delta \hat{X}^n = \delta X_n. \end{aligned} \tag{C.4}$$

These modes diagonalize the fluctuation action, as we will show below (we will denote all the quantities that are related to this basis with a hat). Furthermore, we need to write the partition function in terms of $\delta \hat{X}^I$ (the index I runs over $\{v, c, n\}$), since the associated correlators can be derived by solving the decoupled set of fluctuations equations. The final step will be the integration over θ and φ , once we have expressed the action in terms of the orthonormal basis δX^i , for the sake of comparison to the finite-temperature case.

More specifically, the procedure we will adopt is the following.

1. We first express the second-order fluctuation action (B.9) in terms of the δX^I 's. In the path integral this translates into

$$\begin{aligned} Z &= \int \frac{d\Omega}{4\pi} \int \mathcal{D} [\delta \hat{X}^I]^3 |J(\theta, \varphi)| e^{iS[\delta \hat{X}]} \\ &= \int \frac{d\Omega}{4\pi} \int \mathcal{D} [\delta \hat{X}^I]^3 \exp \left\{ -\frac{i}{2} \int dr dt \hat{\mathcal{G}}_{IJ}^{ab}(r) \partial_a \delta \hat{X}^I(r, t) \partial_b \delta \hat{X}^J(r, t) \right\}, \end{aligned} \tag{C.5}$$

where $|J| = 1$ is the Jacobian corresponding to the change of variables from δX^i to $\delta \hat{X}^I$, $d\Omega = d\varphi d\cos\theta$ and $\hat{\mathcal{G}}_{IJ}^{ab}$ is a diagonal matrix that reads

$$\hat{\mathcal{G}}_{IJ}^{rr} = -\frac{1}{\gamma^2} \frac{R^2}{b^4} \hat{\mathcal{G}}_{IJ}^{\tau\tau} = \frac{1}{2\pi\ell_s^2} \frac{R}{\gamma} \text{diag} \left(\gamma^2, \frac{R^2}{b^4}, 1 \right), \tag{C.6}$$

with $R = \sqrt{b^4 - C^2}$. The matrix J associated to the change of variables is given explicitly by

$$(J^{-1})_j^I = O_j^I = \begin{pmatrix} \frac{|c|}{C} \sin \theta & -\frac{|c|}{C} \cos \theta \cos \varphi & -\frac{|c|}{C} \cos \theta \sin \varphi \\ \gamma^2 \frac{|c|}{C} \cos \theta & \frac{|c|}{C} \sin \theta \cos \varphi & \frac{|c|}{C} \sin \theta \sin \varphi \\ 0 & -\sin \varphi & \cos \varphi \end{pmatrix}, \tag{C.7}$$

where $|c|$ is the function of θ given by equation (C.3).

We may now observe that the normalization (C.4) has been chosen so that $|J| = 1$. Here we only include the symmetric part of the action (B.9), $\propto g^{ab}\Xi_{ij}$. The vanishing of the antisymmetric part, $\propto \epsilon^{ab}\alpha_{ij}$, upon integration, can be checked easily by following the same steps that we describe below for the symmetric contribution (see appendix E).

2. We then make use of the equations of motion $\delta\hat{X}^I(r, \omega) = F_J^I(r, \omega)\delta\hat{X}_0^J(\omega)$ in the Fourier transformed fields to evaluate the functional integral at the saddle point, integrate by parts and evaluate the dr integral. These steps lead to the following expression:

$$Z = \int \frac{d\Omega}{4\pi} \times \exp \left\{ -\frac{i}{2} \int d\omega F_I^K(r_q, -\omega) \hat{\mathcal{G}}_{KM}^{rr}(r_q) \partial_r F_J^M(r_q, \omega) \delta\hat{X}_0^I(-\omega) \delta\hat{X}_0^J(\omega) \right\}. \quad (\text{C.8})$$

Here F_J^I is a diagonal kernel,

$$F_J^I(r, \omega) = \text{diag} (F^T(r, \omega), F^L(r, \omega), F^T(r, \omega)), \quad (\text{C.9})$$

where F^T and F^L are the infalling wave-function solutions to the equations (B.23) and (B.24) respectively, with unitary boundary conditions. The wave functions $\delta\hat{X}^I$ take boundary values $\delta\hat{X}_0^I$. The boundary is at $r = r_q$, where $r_q = 0$ for infinitely massive probes, while it is finite, $r_q \sim 1/M_q$, for probes with finite mass.

3. In order to obtain the correlators in the orthonormal basis $\{x_i\}$, we have to rotate the action back to this basis:

$$Z = \int \frac{d\Omega}{4\pi} \exp \left\{ i \int d\omega G_{ij}(\omega; \theta, \varphi) \delta X_0^i(-\omega) \delta X_0^j(\omega) \right\}. \quad (\text{C.10})$$

We have defined the θ - and φ -dependent correlator as

$$G_{ij}(\omega; \theta, \varphi) = -\frac{1}{2} O_i^I(\theta, \varphi) F_I^K(r_q, -\omega) \hat{\mathcal{G}}_{KM}^{rr}(r_q) \partial_r F_J^M(r_q, \omega) O_j^J(\theta, \varphi), \quad (\text{C.11})$$

where O is defined in (C.7). Putting the equations (C.6), (C.9), (C.11) and (C.7) together, we are led to the following expression for G_{ij} :

$$G_{ij} = \frac{1}{1 - v^2 \sin^2 \theta} (H_{Tij} G^T + H_{Lij} G^L), \quad (\text{C.12})$$

where H_T and H_L are ω -independent symmetric matrices:

$$\begin{aligned} H_T^{11} &= \sin^2 \theta, & H_L^{11} &= \cos^2 \theta, \\ H_T^{12} &= -\cos \theta \sin \theta \cos \varphi, & H_L^{12} &= (1 - v^2) \cos \theta \sin \theta \cos \varphi, \\ H_T^{13} &= -\cos \theta \sin \theta \sin \varphi, & H_L^{13} &= (1 - v^2) \cos \theta \sin \theta \sin \varphi, \\ H_T^{22} &= \cos^2 \theta + (1 - v^2) \sin^2 \theta \sin^2 \varphi, & H_L^{22} &= (1 - v^2)^2 \sin^2 \theta \cos^2 \varphi, \\ H_T^{23} &= -(1 - v^2) \sin^2 \theta \cos \varphi \sin \varphi, & H_L^{23} &= (1 - v^2)^2 \sin^2 \theta \cos \varphi \sin \varphi, \\ H_T^{33} &= \cos^2 \theta + (1 - v^2) \sin^2 \theta \cos^2 \varphi, & H_L^{33} &= (1 - v^2)^2 \sin^2 \theta \sin^2 \varphi. \end{aligned} \quad (\text{C.13})$$

Here we have defined G^T and G^L as the correlators obtained for the diagonal system:¹⁷

$$G^T(\omega) = -\frac{1}{2} \frac{1}{2\pi\ell_s^2} \frac{R}{\gamma} F^T(r, -\omega) \partial_r F^T(r, \omega) \Big|_{r=r_q}, \quad (\text{C.14})$$

$$G^L(\omega) = -\frac{1}{2} \frac{1}{2\pi\ell_s^2} \frac{\gamma R^3}{b^4} F^L(r, -\omega) \partial_r F^L(r, \omega) \Big|_{r=r_q}. \quad (\text{C.15})$$

We note that the θ - and φ -dependent correlator (C.12) reduces to $G_{11} = G^L$, $G_{22} = G_{33} = G^T$, (all other components vanish) in the $\theta \rightarrow 0, \pi$ limit, as it is expected.

D Averaging over the shadow quark velocity

One way to perform the angular average is to integrate over all string direction with the standard solid angle integration measure. An alternative way to do obtain angle-independent boundary correlators is to average over the velocity of the quark at infinity. Suppose that, once a stationary regime is reached, the observed quark has constant velocity $\vec{v} = v\hat{z}$ (directed along x without loss of generality) and the second (unobserved) quark has constant velocity \vec{w} . At long times, and regardless of initial conditions, we have:

$$\vec{x}_1(t) = \vec{v}t + \dots, \quad \vec{x}_2(t) = \vec{w}t + \dots \quad (\text{D.1})$$

where x_1 and x_2 are the (classical) positions of, respectively, the observed and unobserved quark and \dots means subleading contributions in the $t \rightarrow \infty$ limit. In this limit, the direction of the string is the unit vector

$$\hat{\xi} = \frac{\vec{x}_2(t) - \vec{x}_1(t)}{|\vec{x}_2(t) - \vec{x}_1(t)|} \rightarrow \frac{\vec{w} - \vec{v}}{|\vec{w} - \vec{v}|} \quad (\text{D.2})$$

and it is time-independent. In the stationary regime, the angle the string makes with the observed quark velocity (i.e. the angle θ of the previous sections) is fixed and is given by the relation:

$$\cos \theta = \frac{\vec{v} \cdot (\vec{w} - \vec{v})}{v |\vec{w} - \vec{v}|} = \frac{w \cos \theta_w - v}{(w^2 + v^2 - 2vw \cos \theta_w)^{1/2}} \quad (\text{D.3})$$

where $w = |\vec{w}|$ and θ_w is the angle between \vec{w} and \vec{v} , i.e. in spherical coordinates:

$$\vec{w} = w \begin{pmatrix} \cos \theta_w \\ \sin \theta_w \cos \varphi_w \\ \sin \theta_w \sin \varphi_w \end{pmatrix}. \quad (\text{D.4})$$

Assuming complete lack of knowledge of \vec{w} amounts to averaging over all possible values of \vec{w} , i.e. on the 4-velocity vector $u_\alpha \equiv (u_0, \vec{u}) = (\gamma(w), \gamma(w)\vec{w})$, using the Lorentz-invariant measure:

$$d\mu[u_\alpha] = d^4u \delta(u^\alpha u_\alpha - 1) = \frac{d^3\vec{u}}{2u_0} = \frac{d^3\vec{u}}{2\sqrt{1 + |\vec{u}|^2}} \quad (\text{D.5})$$

¹⁷These correlators formally reduce to the finite-temperature correlators if $r_m \rightarrow r_s$, $C \rightarrow b_s^2 v$, and the blackening function f is introduced.

Changing variables to \vec{w} by the relation $\vec{u} = \vec{w}/\sqrt{1-w^2}$, the integration measure becomes:

$$d\mu[\vec{w}] = \frac{d^3w}{2(1-w^2)^2} = d\Omega_w \frac{w^2 dw}{2(1-w^2)^2} \tag{D.6}$$

where the range of w is now the interval $[0, 1)$.

Given any \vec{w} -dependent observable $A(w, \theta_w, \varphi_w)$ we define its w -average by:

$$\langle A \rangle_w = \lim_{\epsilon \rightarrow 0} \left\{ \left[\int_0^{1-\epsilon} \frac{w^2 dw}{2(1-w^2)^2} \int_{-1}^1 d \cos \theta_w \int_0^{2\pi} d\varphi_w A(w, \theta_w, \varphi_w) \right] \right. \\ \left. / \left[4\pi \int_0^{1-\epsilon} \frac{w^2 dw}{2(1-w^2)^2} \right] \right\}. \tag{D.7}$$

The regularization is required since $\int d\mu[\vec{w}]1$ diverges. If the limit of (D.7) is finite, it should not depend on how exactly we regulate the integrals). The normalization factor can be approximated as:

$$4\pi \int_0^{1-\epsilon} \frac{w^2 dw}{2(1-w^2)^2} = \frac{\pi}{2\epsilon} + O(1), \tag{D.8}$$

and as long as the numerator in (D.7) is divergent as $O(1/\epsilon)$ or faster, the subleading terms are irrelevant.

For comparison, we will denote by $\langle \rangle_\Omega$ the simple average over the direction of the string,

$$\langle A(v) \rangle_\Omega = \int \frac{d\Omega(\theta, \varphi)}{4\pi} A(v, \theta, \varphi) \tag{D.9}$$

Notice that, if $v = 0$, equation (D.3) tells us that $\cos \theta_w = \cos \theta$, and

$$\langle A(v = 0) \rangle_w = \langle A(v = 0) \rangle_\Omega. \tag{D.10}$$

E Antisymmetric contribution to fluctuation action

We here follow the steps 1-4 of section C, giving the explicit expressions for the quantities associated to the antisymmetric contribution to the second order fluctuation action, $\propto \epsilon^{ab} \alpha_{ij}$. We will show that this contribution vanishes, once the integration over the angles is performed.

1. If we express the antisymmetric contribution in terms of the eigenvalue basis, equation (C.4), the analogue of formula (C.6) for the antisymmetric term is

$$\hat{\mathcal{G}}_{IJ}^{(A)r\tau} = -\hat{\mathcal{G}}_{IJ}^{(A)\tau r} = \frac{1}{2\pi\ell_s^2} \frac{2vC \sin \theta}{\sqrt{1-v^2 \sin^2 \theta}} \begin{pmatrix} 0 & 1 & 0 \\ -1 & 0 & 0 \\ 0 & 0 & 0 \end{pmatrix}. \tag{E.1}$$

2. We then integrate by parts and are left with a non trivial boundary term in r and a trivial boundary term in τ . We obtain the result (C.8) for the partition function, now with $\hat{\mathcal{G}}^{(A)r\tau}$ replacing $\hat{\mathcal{G}}^{rr}$ (the $\hat{\mathcal{G}}^{(A)\tau r}$ term gives the vanishing total derivative term in τ and a bulk term that cancels the bulk contribution from $\hat{\mathcal{G}}^{(A)r\tau}$).

3. Rotating back to the Cartesian basis, making use of the matrix (C.7), we obtain the analogue of formula (C.12):

$$G_{ij}^{(A)} = G^{TL} \frac{2vC \sin \theta}{\sqrt{1 - v^2 \sin^2 \theta}} \begin{pmatrix} 0 & \cos \varphi \sin \varphi \\ -\cos \varphi & 0 & 0 \\ -\sin \varphi & 0 & 0 \end{pmatrix}. \quad (\text{E.2})$$

The off-diagonal factor G^{TL} is defined by

$$G^{TL}(\omega) = -\frac{1}{2} \frac{1}{2\pi\ell_s^2} (i\omega) F^T(r_q, -\omega) F^L(r_q, \omega) = -\frac{1}{2} \frac{1}{2\pi\ell_s^2} (i\omega),$$

where we used the boundary condition $F(r_q, \omega) = 1$.

4. Averaging this expression yields a vanishing results in all cases, either due to the antisymmetry of the sinusoidal functions over the interval of integration (for the Ω - and w -average), or because of the proportionality to $\sin \theta$ in the fixed-angle case ($\theta = \pi$).

F Langevin equation and consistency relations

Here we illustrate the derivation of the generalize Langevin equation, and in particular show that

$$v \frac{d}{dv} \langle \mathcal{F}^i \rangle = -i \left[\frac{dG^{ij}}{d\omega} \right]_{\omega=0} v_j. \quad (\text{F.1})$$

where \mathcal{F}^i is the plasma operator that couples to the quark position, G^{ij} is the retarded correlator of the same operator, v^i is the particle velocity (assumed to be constant) and $v = \sqrt{v^i v^i}$.

Assuming the correlator on the right hand side has an analytic expansion near $\omega = 0$, the right hand side equals the friction coefficient, η^{ij} , i.e.,

$$G^{ij} = -i\omega\eta^{ij}(v) + O(\omega^2) \quad (\text{F.2})$$

On the other hand, the expectation value of the force operator $\langle \mathcal{F}^i \rangle$ equals, holographically, the classical drag force π^i exerted by the trailing string on its endpoint. Therefore (F.1) can be rewritten as:

$$v \frac{d}{dv} \pi^i = -\eta^{ij} v_j. \quad (\text{F.3})$$

F.1 Langevin equation for the fluctuations around a classical trajectory

We start with the path-integral derivation of Langevin equation, using the double-field formalism. In this framework, the partition function for the position of a single quark $X^i(t)$ and coupled to an ensemble can be written as:

$$Z = \int \mathcal{D}[X_+^i(t)] \mathcal{D}[X_-^i(t)] e^{i(S_0[X_+] - S_0[X_-])} \left\langle \exp \left[i \int dt \mathcal{F}_+ \cdot X_+ - i \int dt \mathcal{F}_- \cdot X_- \right] \right\rangle_{\text{ens}}$$

where $S_0[X]$ is the classical action for a free particle, and \mathcal{F}^i accounts for the coupling between the ensemble and the particle.

The goal is to write the integral over the bath in the form of an effective action for the fields $X_{\pm}(t)$, which would change the dynamics from that encoded in $S[X]$ to include the effect of the bath. This is standard, and is achieved by expanding the exponentials, substituting linear and quadratic terms of F with their ensemble averages (i.e. introducing one- and two-point functions) and re-exponentiating to obtain an effective action quadratic in X . For details the reader can be referred for example to [37] for a clean derivation. Here, since we are expanding around a constant-velocity background, and we want to keep the result to all orders in v , we will repeat that derivation separating background and fluctuations.

First, we expand X_+ and X_- around the constant \vec{v} background. For this purpose, we write:

$$X_{\pm}^i = \bar{X}^i(t) + \delta X_{\pm}^i(t), \quad \bar{X}^i(t) = v^i t \quad (\text{F.4})$$

Expanding the exponential in (F.1) to second order in δX^i we obtain:

$$\begin{aligned} Z \simeq & \int \mathcal{D}[X_+^i(t)] \mathcal{D}[X_-^i(t)] e^{i(S_0[X_+] - S_0[X_-])} \\ & \left\langle e^{i \int v^i t (\mathcal{F}_+^i - \mathcal{F}_-^i)} \left[1 + i \int dt (\delta X_+^i \mathcal{F}_+^i - i \delta X_-^i \mathcal{F}_-^i) + \right. \right. \\ & \left. \left. - \frac{1}{2} \int dt dt' (\delta X_+^i \delta X_+^j \mathcal{F}_+^i \mathcal{F}_+^j + \delta X_-^i \delta X_-^j \mathcal{F}_-^i \mathcal{F}_-^j \right. \right. \\ & \left. \left. - \delta X_+^i \delta X_-^j \mathcal{F}_+^i \mathcal{F}_-^j - \delta X_-^i \delta X_+^j \mathcal{F}_-^i \mathcal{F}_+^j) \right] \right\rangle \quad (\text{F.5}) \end{aligned}$$

This can be re-exponentiated by introducing the appropriate one- and two-point functions:

$$Z \simeq \int \mathcal{D}[X_+^i(t)] \mathcal{D}[X_-^i(t)] e^{i(S_0[X_+] - S_0[X_-]) + i S_{\text{eff}}[\delta X_+, \delta X_-]} \quad (\text{F.6})$$

where

$$S_{\text{eff}} = \int dt \delta X_+^i \langle \mathcal{F}_+^i \rangle_v - \delta X_-^i \langle \mathcal{F}_-^i \rangle_v + \frac{1}{2} \int dt dt' G_{ab}^{ij}(t, t'; v) \delta X_a^i \delta X_b^j \quad (\text{F.7})$$

where $\langle \rangle_v$ denotes correlators computed in the presence of the source $\bar{X}_{\mu} = vt$ and

$$G_{ab}^{ij}(t, t'; v) = i \begin{pmatrix} \langle \mathcal{F}_+^i(t) \mathcal{F}_+^j(t') \rangle_v & -\langle \mathcal{F}_+^i(t) \mathcal{F}_-^j(t') \rangle_v \\ -\langle \mathcal{F}_-^i(t) \mathcal{F}_+^j(t') \rangle_v & \langle \mathcal{F}_-^i(t) \mathcal{F}_-^j(t') \rangle_v \end{pmatrix} \quad (\text{F.8})$$

are the *connected, path ordered* correlators of the operators \mathcal{F}_{\pm} , and are related to the connected retarded and symmetric correlators by:¹⁸

$$G_{\text{sym}} = \frac{1}{4} (\langle \mathcal{F}_+ \mathcal{F}_+ \rangle_v + \langle \mathcal{F}_- \mathcal{F}_- \rangle_v + \langle \mathcal{F}_- \mathcal{F}_+ \rangle_v + \langle \mathcal{F}_+ \mathcal{F}_- \rangle_v) \quad (\text{F.10})$$

$$G_R = -\frac{i}{2} (\langle \mathcal{F}_+ \mathcal{F}_+ \rangle_v - \langle \mathcal{F}_- \mathcal{F}_- \rangle_v + \langle \mathcal{F}_- \mathcal{F}_+ \rangle_v - \langle \mathcal{F}_+ \mathcal{F}_- \rangle_v) \quad (\text{F.11})$$

¹⁸These relations may be obtained by from the path ordering of the correlators, as well as the operator definitions of the correlators:

$$G_{\text{sym}}(t, t') = \frac{1}{2} \langle \{\mathcal{F}(t), \mathcal{F}(t')\} \rangle, \quad G_R(t, t') = -i\theta(t - t') \langle [\mathcal{F}(t), \mathcal{F}(t')] \rangle. \quad (\text{F.9})$$

(note that, with the exception of this and the following subsection in the appendix, we use G for G_R , to simplify notation). We now change to the $\delta X_{cl}, \delta X_r$ variables defined by

$$\delta X_{cl} = (\delta X_+ + \delta X_-)/2, \quad \delta X_r = \delta X_+ - \delta X_- \quad (\text{F.12})$$

and obtain

$$\begin{aligned} S_{\text{eff}} = & \int dt \delta X_r^i \langle \mathcal{F}_+^i + \mathcal{F}_-^i \rangle_v + \delta X_{cl}^i \langle \mathcal{F}_+^i - \mathcal{F}_-^i \rangle_v + \\ & - \int dt dt' G_R^{ij}(t, t'; v) \delta X_{cl}^i(t) \delta X_r^j(t') + \frac{i}{2} G_{\text{sym}}^{ij}(t, t'; v) \delta X_r^i(t) \delta X_r^j(t') \end{aligned} \quad (\text{F.13})$$

On the other hand, the classical part of the action can be expanded in the same fashion, giving:

$$S_0[X_+] - S_0[X_-] = \left[\frac{\delta S_0}{\delta X^i} \right]_{\bar{X}} \delta X_r^i + \left[\frac{\delta^2 S_0}{\delta X^i \delta X^j} \right]_{\bar{X}} \delta X_{cl}^i \delta X_r^j \quad (\text{F.14})$$

(the terms like e.g. δX_{cl}^2 cancel because of our choice of the background, i.e. $\bar{X}_- = \bar{X}_+$).

The total action appearing in the exponent of path integral (F.6) contains a linear and a quadratic piece:

$$\begin{aligned} S[\delta X_a] = & S^{(1)} + S^{(2)}, \\ S^{(1)} = & \int dt \left[\delta X_r^i \left(\frac{\delta S_0}{\delta X^i} + \frac{1}{2} \langle \mathcal{F}_+^i + \mathcal{F}_-^i \rangle_v \right) + \delta X_{cl}^i \langle \mathcal{F}_+^i - \mathcal{F}_-^i \rangle_v \right] \end{aligned} \quad (\text{F.15})$$

$$\begin{aligned} S^{(2)} = & \int dt dt' \left[\frac{i}{2} \delta X_r^i(t) G_{\text{sym}}^{ij}(t, t'; v) \delta X_r^j(t') \right. \\ & \left. + \delta X_r^i(t) \left[\frac{\delta^2 S_0}{\delta X^i(t) \delta X^j(t')} \right]_{\bar{X}} - G_R^{ij}(t, t'; v) \right] \delta X_{cl}(t'). \end{aligned} \quad (\text{F.16})$$

At linear order, i.e. tadpole cancellation gives on the one hand the condition

$$\langle \mathcal{F}_+^i \rangle_v = \langle \mathcal{F}_-^i \rangle_v, \quad (\text{F.17})$$

as expected since we have chosen a symmetric ansatz for the background; on the other hand it gives the classical equations of motions for the background,

$$\frac{\delta S_0}{\delta X^i} = -\langle \mathcal{F}^i \rangle_v. \quad (\text{F.18})$$

The particle is subject to a (velocity dependent) external force $\langle \mathcal{F}^i \rangle_v$, arising as the effect of the coupling with fluid.

At quadratic order, the action depends quadratically on δX_r and only linearly in δX_{cl} . We resort to the usual trick of trading the variable δX_r for a random Gaussian noise $\xi(t)$ with variance G_{sym} , by the identity

$$\exp \left[-\frac{1}{2} \int \delta X_r^i G_{\text{sym}}^{ij} \delta X_r^j \right] = \mathcal{N} \int \mathcal{D}[\xi^i(t)] \exp \left[-\frac{1}{2} \int \xi^i (G_{\text{sym}}^{-1})^{ij} \xi^j - i \int \delta X_r^i \xi^i \right]. \quad (\text{F.19})$$

where \mathcal{N} is a normalization factor. Now the action is linear in δX_r and the path integral over this variable can be performed resulting in a functional Dirac's δ . We arrive at:

$$Z = \int \mathcal{D}[\xi^i] \mathcal{D}[X_{cl}^i] \delta \left(\frac{\delta^2 S_0}{\delta X^i \delta X^j} \Big|_{\bar{X}} \delta X_{cl}^j(t) - \int dt' G_R^{ij}(t, t'; v) \delta X_{cl}^j(t') - \xi^i(t) \right) \times \exp \left[-\frac{1}{2} \int \xi^i (G_{\text{sym}}^{-1})^{ij} \xi^j \right]. \quad (\text{F.20})$$

From this expression, one concludes that the fluctuation $\delta X_{cl}(t)$ around the classical particle trajectory $\bar{X}^i(t)$ obeys the Generalized Langevin equation

$$\frac{\delta^2 S_0}{\delta X^i \delta X^j} \Big|_{\bar{X}} \delta X_{cl}^j(t) - \int dt' G_R^{ij}(t, t'; v) \delta X_{cl}^j(t') = \xi^i(t) \quad (\text{F.21})$$

where the memory kernel $G_R(t, t')$ is the retarded correlator of the force operator \mathcal{F} and with Gaussian noise variance is the symmetric correlator of the same operator.

F.2 A double-field Ward identity

In the formalism of the previous subsection, it is straightforward to obtain the consistency relation (F.1) between the ‘‘classical’’ and ‘‘quantum’’ terms arising from the interaction with the fluid. By definition, and with the relation (F.17), we have

$$\langle \mathcal{F}^i \rangle_{\bar{X}} = \frac{1}{2} \left\langle (\mathcal{F}_+^i + \mathcal{F}_-^i) \exp \left\{ i \int dt \bar{X}^i(t) (\mathcal{F}_+^i - \mathcal{F}_-^i) \right\} \right\rangle_{\text{ens}} \quad (\text{F.22})$$

Specifying a uniform velocity background trajectory,

$$\bar{X}^i(t) = v^i t \quad (\text{F.23})$$

and taking a derivative of (F.22) with respect to v^j we obtain:

$$\frac{\partial \langle \mathcal{F}^i \rangle_{\bar{v}}}{\partial v^j} = \frac{i}{2} \left\langle \int dt' t' (\mathcal{F}_+^j(t') - \mathcal{F}_-^j(t')) (\mathcal{F}_+^i(t) + \mathcal{F}_-^i(t)) \right\rangle_{\bar{v}} = \int dt' t' G_R^{ij}(t, t'; \bar{v}) \quad (\text{F.24})$$

where in the last equality we have used the relation (F.11) between the retarded correlator and the double-field path-ordered correlators. Going to Fourier space, $G_R(t, t') = \int (d\omega/2\pi) e^{-i\omega(t-t')} G_R(\omega)$, this becomes:

$$\frac{\partial \langle \mathcal{F}^i \rangle_{\bar{v}}}{\partial v^j} = -i \frac{dG_R^{ij}(\omega; v)}{d\omega} \Big|_{\omega=0} \quad (\text{F.25})$$

From this general relation, projecting over v^j and noting that $d/dv = (v^j/v) \partial/\partial v^j$ we obtain (F.1).

Open Access. This article is distributed under the terms of the Creative Commons Attribution License ([CC-BY 4.0](https://creativecommons.org/licenses/by/4.0/)), which permits any use, distribution and reproduction in any medium, provided the original author(s) and source are credited.

References

- [1] E. Witten, *Anti-de Sitter space, thermal phase transition and confinement in gauge theories*, *Adv. Theor. Math. Phys.* **2** (1998) 505 [[hep-th/9803131](#)] [[INSPIRE](#)].
- [2] J.M. Maldacena and C. Núñez, *Towards the large N limit of pure $N = 1$ super Yang-Mills*, *Phys. Rev. Lett.* **86** (2001) 588 [[hep-th/0008001](#)] [[INSPIRE](#)].
- [3] I.R. Klebanov and M.J. Strassler, *Supergravity and a confining gauge theory: Duality cascades and χ SB resolution of naked singularities*, *JHEP* **08** (2000) 052 [[hep-th/0007191](#)] [[INSPIRE](#)].
- [4] T. Sakai and S. Sugimoto, *Low energy hadron physics in holographic QCD*, *Prog. Theor. Phys.* **113** (2005) 843 [[hep-th/0412141](#)] [[INSPIRE](#)].
- [5] S. Kuperstein and J. Sonnenschein, *Non-critical, near extremal AdS_6 background as a holographic laboratory of four dimensional YM theory*, *JHEP* **11** (2004) 026 [[hep-th/0411009](#)] [[INSPIRE](#)].
- [6] J. Erlich, E. Katz, D.T. Son and M.A. Stephanov, *QCD and a holographic model of hadrons*, *Phys. Rev. Lett.* **95** (2005) 261602 [[hep-ph/0501128](#)] [[INSPIRE](#)].
- [7] L. Da Rold and A. Pomarol, *Chiral symmetry breaking from five dimensional spaces*, *Nucl. Phys. B* **721** (2005) 79 [[hep-ph/0501218](#)] [[INSPIRE](#)].
- [8] U. Gürsoy and E. Kiritsis, *Exploring improved holographic theories for QCD: Part I*, *JHEP* **02** (2008) 032 [[arXiv:0707.1324](#)] [[INSPIRE](#)].
- [9] U. Gürsoy, E. Kiritsis and F. Nitti, *Exploring improved holographic theories for QCD: Part II*, *JHEP* **02** (2008) 019 [[arXiv:0707.1349](#)] [[INSPIRE](#)].
- [10] S.S. Gubser and A. Nellore, *Mimicking the QCD equation of state with a dual black hole*, *Phys. Rev. D* **78** (2008) 086007 [[arXiv:0804.0434](#)] [[INSPIRE](#)].
- [11] C. Herzog, A. Karch, P. Kovtun, C. Kozcaz and L. Yaffe, *Energy loss of a heavy quark moving through $N = 4$ supersymmetric Yang-Mills plasma*, *JHEP* **07** (2006) 013 [[hep-th/0605158](#)] [[INSPIRE](#)].
- [12] S.S. Gubser, *Drag force in AdS/CFT* , *Phys. Rev. D* **74** (2006) 126005 [[hep-th/0605182](#)] [[INSPIRE](#)].
- [13] H. Liu, K. Rajagopal and U.A. Wiedemann, *Calculating the jet quenching parameter from AdS/CFT* , *Phys. Rev. Lett.* **97** (2006) 182301 [[hep-ph/0605178](#)] [[INSPIRE](#)].
- [14] H. Liu, K. Rajagopal and U.A. Wiedemann, *Wilson loops in heavy ion collisions and their calculation in AdS/CFT* , *JHEP* **03** (2007) 066 [[hep-ph/0612168](#)] [[INSPIRE](#)].
- [15] J. Casalderrey-Solana and D. Teaney, *Heavy quark diffusion in strongly coupled $N = 4$ Yang-Mills*, *Phys. Rev. D* **74** (2006) 085012 [[hep-ph/0605199](#)] [[INSPIRE](#)].
- [16] S.S. Gubser, *Momentum fluctuations of heavy quarks in the gauge-string duality*, *Nucl. Phys. B* **790** (2008) 175 [[hep-th/0612143](#)] [[INSPIRE](#)].
- [17] J. Casalderrey-Solana and D. Teaney, *Transverse Momentum Broadening of a Fast Quark in a $N = 4$ Yang-Mills Plasma*, *JHEP* **04** (2007) 039 [[hep-th/0701123](#)] [[INSPIRE](#)].
- [18] J. de Boer, V.E. Hubeny, M. Rangamani and M. Shigemori, *Brownian motion in AdS/CFT* , *JHEP* **07** (2009) 094 [[arXiv:0812.5112](#)] [[INSPIRE](#)].

- [19] D.T. Son and D. Teaney, *Thermal Noise and Stochastic Strings in AdS/CFT*, *JHEP* **07** (2009) 021 [[arXiv:0901.2338](#)] [[INSPIRE](#)].
- [20] G. Giacold, E. Iancu and A. Mueller, *Stochastic trailing string and Langevin dynamics from AdS/CFT*, *JHEP* **07** (2009) 033 [[arXiv:0903.1840](#)] [[INSPIRE](#)].
- [21] C. Hoyos-Badajoz, *Drag and jet quenching of heavy quarks in a strongly coupled $N = 2^*$ plasma*, *JHEP* **09** (2009) 068 [[arXiv:0907.5036](#)] [[INSPIRE](#)].
- [22] U. Gürsoy, E. Kiritsis, G. Michalogiorgakis and F. Nitti, *Thermal Transport and Drag Force in Improved Holographic QCD*, *JHEP* **12** (2009) 056 [[arXiv:0906.1890](#)] [[INSPIRE](#)].
- [23] U. Gürsoy, E. Kiritsis, L. Mazzanti and F. Nitti, *Langevin diffusion of heavy quarks in non-conformal holographic backgrounds*, *JHEP* **12** (2010) 088 [[arXiv:1006.3261](#)] [[INSPIRE](#)].
- [24] A. Magana, J. Mas, L. Mazzanti and J. Tarrío, *Probes on $D3$ - $D7$ quark-gluon Plasmas*, *JHEP* **07** (2012) 058 [[arXiv:1205.6176](#)] [[INSPIRE](#)].
- [25] E. Kiritsis, L. Mazzanti and F. Nitti, *Dressed spectral densities for heavy quark diffusion in holographic plasmas*, *J. Phys. G* **39** (2012) 054003 [[arXiv:1111.1008](#)] [[INSPIRE](#)].
- [26] P.M. Hohler and M.A. Stephanov, *Bulk spectral function sum rule in QCD-like theories with a holographic dual*, *JHEP* **06** (2011) 130 [[arXiv:1103.0977](#)] [[INSPIRE](#)].
- [27] S. Caron-Huot, P.M. Chesler and D. Teaney, *Fluctuation, dissipation and thermalization in non-equilibrium AdS_5 black hole geometries*, *Phys. Rev. D* **84** (2011) 026012 [[arXiv:1102.1073](#)] [[INSPIRE](#)].
- [28] J.M. Maldacena, *Wilson loops in large N field theories*, *Phys. Rev. Lett.* **80** (1998) 4859 [[hep-th/9803002](#)] [[INSPIRE](#)].
- [29] S.-J. Rey and J.-T. Yee, *Macroscopic strings as heavy quarks in large N gauge theory and anti-de Sitter supergravity*, *Eur. Phys. J. C* **22** (2001) 379 [[hep-th/9803001](#)] [[INSPIRE](#)].
- [30] Y. Kinar, E. Schreiber and J. Sonnenschein, *$Q\bar{Q}$ potential from strings in curved space-time: Classical results*, *Nucl. Phys. B* **566** (2000) 103 [[hep-th/9811192](#)] [[INSPIRE](#)].
- [31] Y. Kinar, E. Schreiber, J. Sonnenschein and N. Weiss, *Quantum fluctuations of Wilson loops from string models*, *Nucl. Phys. B* **583** (2000) 76 [[hep-th/9911123](#)] [[INSPIRE](#)].
- [32] U. Gürsoy, E. Kiritsis, L. Mazzanti, G. Michalogiorgakis and F. Nitti, *Improved Holographic QCD*, *Lect. Notes Phys.* **828** (2011) 79 [[arXiv:1006.5461](#)] [[INSPIRE](#)].
- [33] A.E. Lawrence and E.J. Martinec, *Black hole evaporation along macroscopic strings*, *Phys. Rev. D* **50** (1994) 2680 [[hep-th/9312127](#)] [[INSPIRE](#)].
- [34] U. Gürsoy, E. Kiritsis, L. Mazzanti and F. Nitti, *Deconfinement and Gluon Plasma Dynamics in Improved Holographic QCD*, *Phys. Rev. Lett.* **101** (2008) 181601 [[arXiv:0804.0899](#)] [[INSPIRE](#)].
- [35] U. Gürsoy, E. Kiritsis, L. Mazzanti and F. Nitti, *Holography and Thermodynamics of 5D Dilaton-gravity*, *JHEP* **05** (2009) 033 [[arXiv:0812.0792](#)] [[INSPIRE](#)].
- [36] U. Gürsoy, E. Kiritsis, L. Mazzanti and F. Nitti, *Improved Holographic Yang-Mills at Finite Temperature: Comparison with Data*, *Nucl. Phys. B* **820** (2009) 148 [[arXiv:0903.2859](#)] [[INSPIRE](#)].
- [37] H. Kleinert, *Path Integrals in Quantum Mechanics, Statistics, Polymer Physics, and Financial Markets*, World Scientific, Singapore (2004).