



**HAL**  
open science

## The carbonate system in the Ligurian Sea

Laurent Coppola, Jacqueline Boutin, Jean-Pierre Gattuso, Dominique Lefèvre, Nicolas Metzl

► **To cite this version:**

Laurent Coppola, Jacqueline Boutin, Jean-Pierre Gattuso, Dominique Lefèvre, Nicolas Metzl. The carbonate system in the Ligurian Sea. Christophe Migon; Paul Nival; Antoine Sciandra. The Mediterranean Sea in the era of global change - 30 years of multidisciplinary study of the Ligurian Sea, 1, Wiley, pp.79-103, 2020, 9781786304285. 10.1002/9781119706960.ch4 . hal-02541817

**HAL Id: hal-02541817**

**<https://hal.science/hal-02541817>**

Submitted on 17 Oct 2022

**HAL** is a multi-disciplinary open access archive for the deposit and dissemination of scientific research documents, whether they are published or not. The documents may come from teaching and research institutions in France or abroad, or from public or private research centers.

L'archive ouverte pluridisciplinaire **HAL**, est destinée au dépôt et à la diffusion de documents scientifiques de niveau recherche, publiés ou non, émanant des établissements d'enseignement et de recherche français ou étrangers, des laboratoires publics ou privés.

## The carbonate system in the Ligurian Sea

£.1. Introduction.....	1
£.2. Distribution of the carbonate system in the Ligurian Sea .....	5
£.3. The seasonal cycle in surface water .....	8
£.4. Long-term changes of the carbonate system and acidification .....	12
£4.1. Surface trends .....	12
£.4.2. Interior trends .....	15
£.5. Changes in the carbonate system in the Ligurian Sea in the Mediterranean Sea and global contexts.....	17
£.6. Conclusions .....	19
£.7. Acknowledgements .....	20
£.8. Bibliography.....	20

### £.1. Introduction

In a little more than 200 years, human activities have released about 660 billion tons of carbon (Pg C) to the atmosphere [LEQ 18], which has major consequences on climate, ecosystems and people [IPC 14]. The oceans have absorbed, and still absorb about a quarter of anthropogenic CO<sub>2</sub> emissions [LEQ 18], limiting the increase in atmospheric carbon dioxide (CO<sub>2</sub>), but increasing ocean acidity [GAT 11]. The study of the oceanic carbonate system is therefore linked to two important environmental issues: (1) ocean CO<sub>2</sub> uptake and (2) ocean acidification and its impact on organisms, ecosystems and ecosystem services [GAT 15].

CO<sub>2</sub> uptake is difficult to measure due to its variability induced by physical and biological processes. Methods to estimate the penetration of anthropogenic CO<sub>2</sub> in the ocean interior exist but they are derived empirically and subject to scientific debate [SAB 10]. Moreover, it has recently been recognized that changes in ocean circulation drive significant variability in carbon uptake [DEV 17]. Long-term

---

Chapitre rédigé par Laurent COPPOLA, Jacqueline BOUTIN, Roberto BOZZANO, Jean-Pierre GATTUSO, Catherine GOYET, Dominique LEFEVRE, Liliane MERLIVAT, Nicolas METZL, Laure MOUSSEAU, Sara PENSIERI, Franck TOURATIER et Thibaut WAGENER.

observations of carbonate system variables (dissolved inorganic carbon,  $C_T$ , total alkalinity,  $A_T$ ,  $CO_2$  partial pressure,  $pCO_2$ , and pH) in the ocean remain challenging but highly needed in order to understand how the ocean is changing, how those changes relate to climate variability, and predict future changes in the global carbon cycle.

Studies on the oceanic carbonate system have been mostly performed in the frame of international programs (JGOFS, WOCE, GO-SHIP) that coordinate oceanographic cruises to collect samples along the water column and perform accurate measurements of carbonate parameters (mostly  $C_T$  and  $A_T$ ). Trends and variability in these ocean variables, including pH (e.g., [BAT 14]), have been quantified and compared with corresponding changes in atmospheric  $CO_2$  through dedicated long-term efforts to maintain ocean time-series stations initiated through JGOFS program (e.g. HOT, BATS, ESTOC, DYFAMED and others; WMO, 2014). These programs have generated high quality databases of carbonate chemistry variables (e.g., GLODAP v2, [OLS 16]) that provide long-trend estimates of the oceanic carbon content based on  $A_T$  and  $C_T$  inventories. In addition to this ocean interior programs, continuous shipboard surface  $pCO_2$  measurements on research and opportunity vessels, buoys or moorings are feeding the SOCAT database [BAK 16], which now allows annual estimates of ocean carbon uptake introduced in global carbon budgets [LEQ 18].

A recent study highlighted an "overaccumulation" of anthropogenic carbon in some oceanic regions and particularly in the Mediterranean Sea [LEE 11, PAL 15, SCH 10, TOU 11]. The study of the Mediterranean carbonate system is unique because of the intrinsic characteristics of this basin: warm waters and high total alkalinity ( $> 2500 \mu\text{mol.kg}^{-1}$ ) associated with a permanent and rapid thermohaline circulation loop (residence time around 100 years; [MIL 05]). Several studies have characterized the Mediterranean carbonate system from samples collected along zonal transect at basin scale (e.g. [ALV 14]) and have shown that the Mediterranean exports dissolved inorganic carbon to the Atlantic Ocean with a net flux of  $38 \text{ Tg C yr}^{-1}$  [SCH 10]. Due to the important evaporation,  $A_T$  and  $S$  are higher in the Mediterranean Sea compared to the Atlantic water entering into the Mediterranean Sea [JIA 14]. On average,  $A_T$  in the Mediterranean Sea is 10% higher than in the global ocean [PAL 15]. The relationship between  $S$  and  $A_T$  is partly controlled by inputs from rivers and the Black Sea, which are generally high in  $A_T$  [COP 93, SCH 07]. Due to its important role in carbon sequestration and ecological sensitivity to anthropogenic change with economic consequences [LAC 16], the Mediterranean Sea could provide insight to global trends [LEJ 18].

**Table 1.** List of cruises with  $A_T$  and  $C_T$  sampling in the Ligurian Sea from 1998 to 2016. Surface  $CO_2$  data provided by the fixed observatories (autonomous sensors) and by the surface ocean observations database (SOCAT) are also listed

<b>CRUISE &amp; PLATFORMS</b>	<b>START TIME</b>	<b>END TIME</b>	<b>DATA</b>	<b>DATASET DOI</b>
<b>ANTARES</b>	06/18/2010	10/16/2016	502	10.18142/233
<b>CASCADE</b>	03/02/2011	03/02/2011	10	10.17600/11010020
<b>POINT B</b>	01/09/2007	12/22/2015	1660	10.5194/ os-13-411-2017
<b>DEWEX</b>	02/19/2013	04/14/2013	68	10.17600/13020010
<b>MOOSE-GE</b>	05/25/2010	05/26/2016	380	10.18142/235
<b>DYFAMED</b>	02/06/1998	12/10/2016	1809	10.17882/43749
<b>DYFAMED (CARIOCA sensor)</b>	1995-1997; 2013-2015		31600	10.17882/56709
<b>WIM3A (PRO-<math>CO_2</math> sensor)</b>	2015	2017	15950	-
<b>SOCAT (database)</b>	1998	2016	53527	10.5194/ essd-8-383-2016

In this chapter, we mainly focus on seasonal cycles and long-term trends of ocean carbonate system based on a synthesis of data collected in the Ligurian Sea from 1998 to 2016. It includes seawater sampling for  $A_T$  and  $C_T$  measurements and  $pCO_2$  and pH calculated using the CO2SYS program [PIE 06] with the recommended constants from Mehrbach et al. [MEH 73] refit by Dickson and Millero [DIC 87] and Dickson [DIC 90]. These samples were collected during oceanographic cruises (CASCADE, DEWEX, MOOSE-GE) and during regular monitoring operations (weekly for SOMLIT-Point B and monthly for DYFAMED and ANTARES, see Table 1). We also use high frequency  $pCO_2$  data measured from CARIOCA sensor at the DYFAMED/BOUSSOLE site [HOO 01, MER 18b] and from  $CO_2$ -PRO sensor at the WIM3A buoy [BOZ 13, CAN 15]. In addition,  $pCO_2$  data available in the SOCAT database version 6 [BAK 16] are used to compare  $pCO_2$  and pH long-term trends deduced from  $A_T$  and  $C_T$  data.

**Carbonates system chemical reactions**

Any two of the four  $\text{CO}_2$  variables (total carbon  $C_T$ ,  $p\text{CO}_2$ , pH, and total alkalinity  $A_T$ ) can be used to determine the  $\text{CO}_2$  system:

$$C_T \equiv [\text{CO}_{2(\text{aq})}] + [\text{H}_2\text{CO}_3] + [\text{HCO}_3^-] + [\text{CO}_3^{2-}]$$

$$\text{At seawater pH, we can simplify to : } C_T \equiv [\text{HCO}_3^-] + [\text{CO}_3^{2-}]$$

$C_T$  is also known as Dissolved Inorganic Carbon (DIC)

$A_T$  represents ability of seawater to resist pH change upon addition of acid:

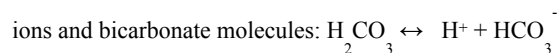
$$A_T \equiv 2[\text{CO}_3^{2-}] + [\text{HCO}_3^-] + [\text{H}_2\text{BO}_3^-] + 2[\text{HBO}_3^{2-}] + 3[\text{BO}_3^{3-}] + [\text{OH}^-] + [\text{organic/inorganic H}^+ \text{ acceptors}] - [\text{H}^+]$$

**Acidity is a measure of  $\text{H}^+$  concentration; the freer  $\text{H}^+$  ions, the lower the solution's pH and the greater the acidity ( $\text{pH} = -\log[\text{H}^+]$ )**

The pH of seawater varies only between about 7.5 and 8.4



The carbonic acid then almost instantly dissociates in the seawater, releasing the  $\text{H}^+$



The bicarbonate ions also dissociate, releasing additional hydrogen ions and forming

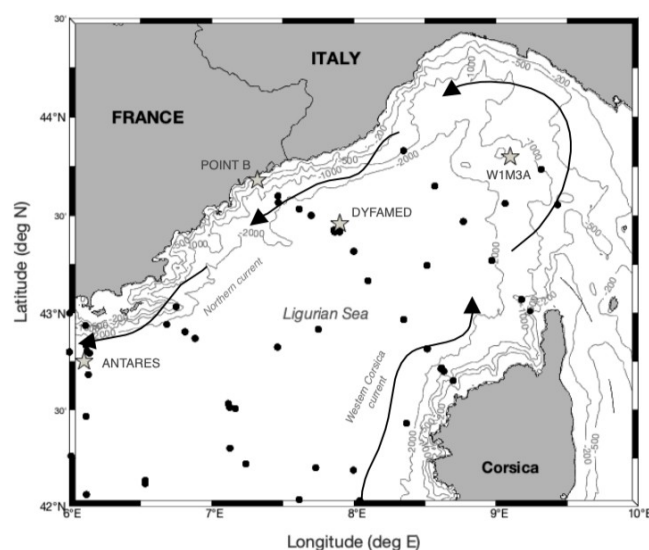


Excepted for DYFAMED site in 1998-2000 [COP 02], all  $A_T$  and  $C_T$  water samples collected in 2004-2016 were shipped back to LOCEAN (Paris) where they are stored at  $4^\circ\text{C}$  and analyzed within three months of collection by "Service National d'Analyse des Paramètres Océaniques du  $\text{CO}_2$ " (SNAPCO<sub>2</sub> at Sorbonne University in Paris, France).  $C_T$  and  $A_T$  are measured via potentiometric titration following methods described by Edmond [EDM 70] and Doe [DOE 94]. Accuracy

of  $C_T$  and  $A_T$  was between 1.5 and 3  $\mu\text{mol kg}^{-1}$  depending the sequence of measurements in 2004-2017. Repeatability of replicate samples conducted at SOMLIT-Point-B in 2007-2015 was better than 3  $\mu\text{mol kg}^{-1}$  for both  $C_T$  and  $A_T$  [KAP 17]. During the  $C_T$  and  $A_T$  sampling, CTD casts (Seabird SBE25 for SOMLIT and SBE911 for open ocean studies) have been performed to collect Temperature (T) and Salinity (S) profiles which were used to estimate  $p\text{CO}_2$  and pH. Nutrient samples have been also collected systematically during the regular cruises during CTD casts by using Niskin bottles mounted on rosette. Usually, most of samples have been collected from surface to bottom depth in the open ocean zone and at two depths (near surface and 50m) in the coastal area (SOMLIT Point B).

## £.2. Distribution of the carbonate system in the Ligurian Sea

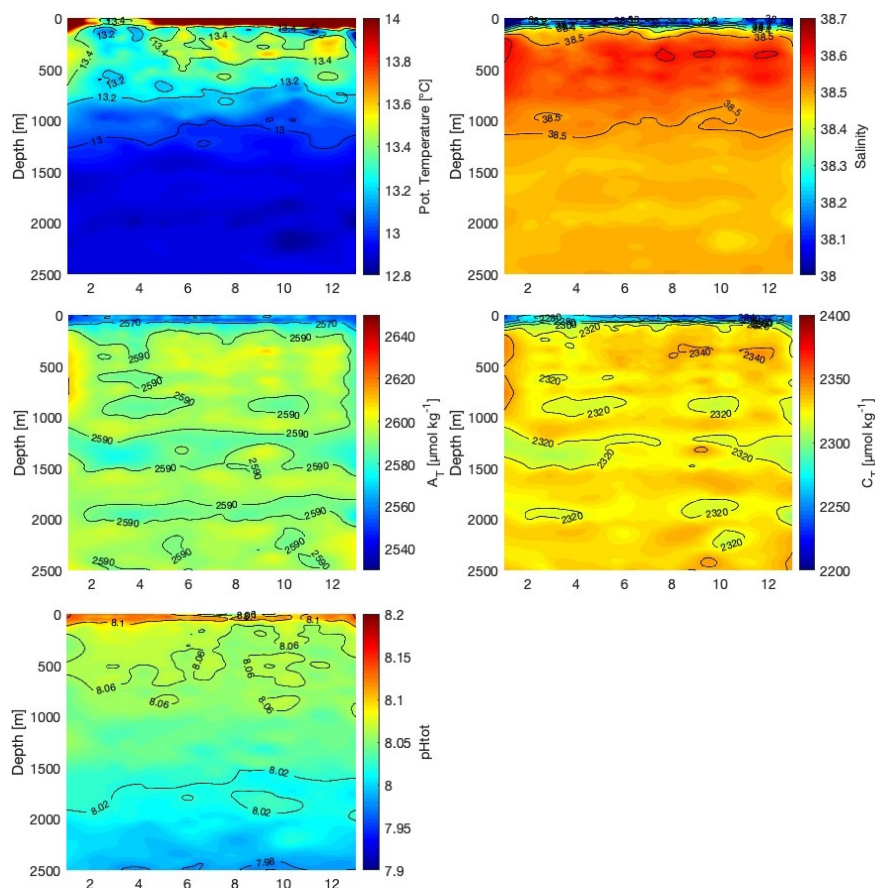
In the Ligurian Sea, episodes of dense water formation and deep mixing occur in winter. They are related to the deep convection process in the Gulf of Lion, which occurs every winter with higher intensity than in the Ligurian Sea [BOS 17, HOU 16]. The Ligurian Sea is also characterized by atmospheric inputs (see Chapter Migon), rich in nutrients, influencing phytoplankton production and the export of organic matter to the mesopelagic zone [MAR 02a].



**Figure £.1.** The Ligurian Sea is located in the Northern part of the Western Mediterranean basin. It is located in the pathway of the Levantine Intermediate Water (LIW), which follows two main surface currents (the Western Corsican Current, WCC and the Northern Current, NC, black arrows) that form a front between coastal and

*offshore waters (See chapter Prieur). The sampling stations from 1998 to 2016 are represented by black dots. The grey stars represent the time series of fixed observatories (DYFAMED, ANTARES, POINT B and W1M3A).*

Water column monthly climatology of potential T (theta) and practical S distributions in the Ligurian Sea have been plotted in figure 2. They include all samples collected during time series monitoring and regular cruises from 1998 to 2016 (Table 1). Results are consistent with those already described by Marty et al. [MAR 02a] and in Coppola et al. [COP 18] at the DYFAMED site: the Modified Atlantic Water (MAW) in the first 200 m with strong T-S seasonal variability, the Levantine Intermediate Water (LIW) more saline than in the rest of the Northwestern basin (200-800 m) with a core around 350 m (maximum of theta and S) and the Western Mediterranean Deep Water (WMDW) warmer and more saline for the last decade due to intense vertical mixing during some winters and the deep-water spreading. These episodes of deep convection are now well documented [HOU 16, SCH 08, SCH 17].



**Figure 2.** Water column monthly climatology of potential  $T$ ,  $S$  and carbonate variables ( $A_T$ ,  $C_T$  and  $pH$  at total scale) in the Ligurian Sea derived from cruises conducted from 1998 to 2016 (all stations shown in figure 1). In the Ligurian Sea, the average  $C_T$  concentration ranges from 2200 in surface to 2350  $\mu\text{mol kg}^{-1}$  in deep waters). Total alkalinity follows the same pattern with depth and ranges from 2500 to 2600  $\mu\text{mol kg}^{-1}$ .  $pH$  (total scale) is higher in the upper 100 m (8.15) and decreases progressively with depth (< 8 in deep waters). Based on all dataset in 1998-2016 (about 1200 samples in deep waters) the mean  $C_T$  and  $A_T$  below 300 m are respectively  $2328 \pm 9$  and  $2593 \pm 7$   $\mu\text{mol kg}^{-1}$ . In the next section we will also explore whether changes can be detected in deep layers.

They modified considerably the deep-water structure and form a stratification of deep-water column where successive new deep waters are overlapped depending on the convection intensity and the newly formed deep-water volume. In the Ligurian



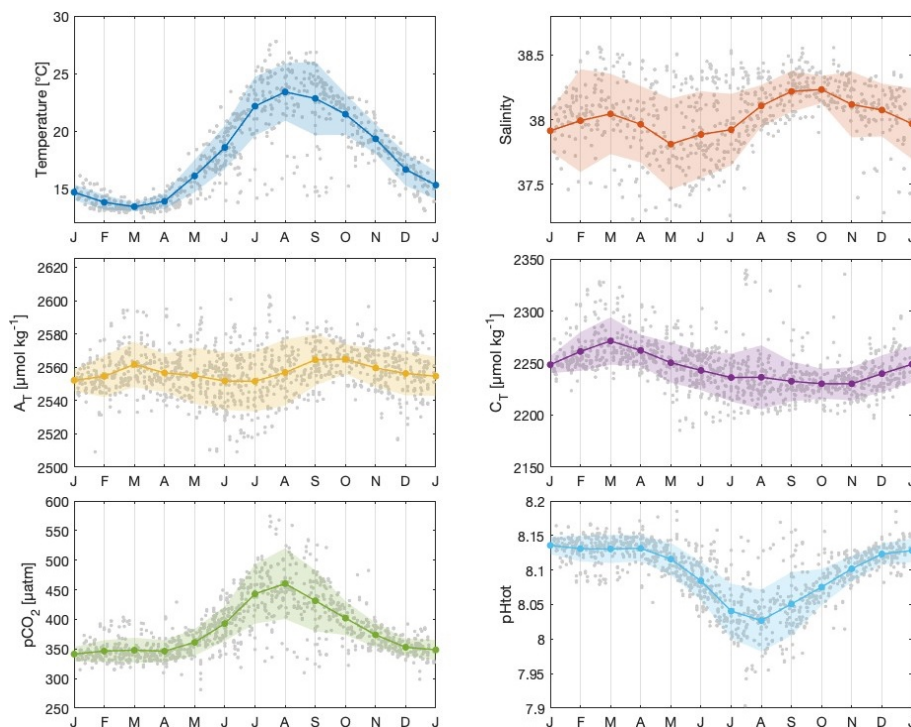
Sea, the wind forcing and heat loss flux are less important than in the Gulf of Lion but deeper vertical mixing can occur in February/March, allowing ventilation of part of the LIW (figure 1.2). When the mixed layer is too shallow, the LIW is reinforced (warmer and denser) and the minimum dissolved oxygen concentration is lower [COP 18].

In addition to the effect of T on CO<sub>2</sub> solubility, the distribution of C<sub>T</sub> in the water column is driven by the antagonistic effects of (1) the biological carbon pump that increases the vertical gradient of C<sub>T</sub> (lowering C<sub>T</sub> at the surface and increasing it in the ocean interior) and (2) the exchange of CO<sub>2</sub> at the air-sea interface.

### 1.3. The seasonal cycle in surface water

The seasonal cycle of carbonate system and ancillary variables in surface water is shown in figure 1.3. The monthly variability of T and S at the DYFAMED site has already been reported by Marty and Chiavérini [MAR 10] and Coppola et al. [COP 18]. At the coastal SOMLIT - Point B site, seasonality has been described by Kapsenberg et al. [KAP 17]. For the Ligurian Sea sub-basin (all cruises listed in Table 1), the same seasonal trend is observed: a maximum sea surface temperature (SST) from July to September and a minimum SST in March when evaporation and heat loss prevail.

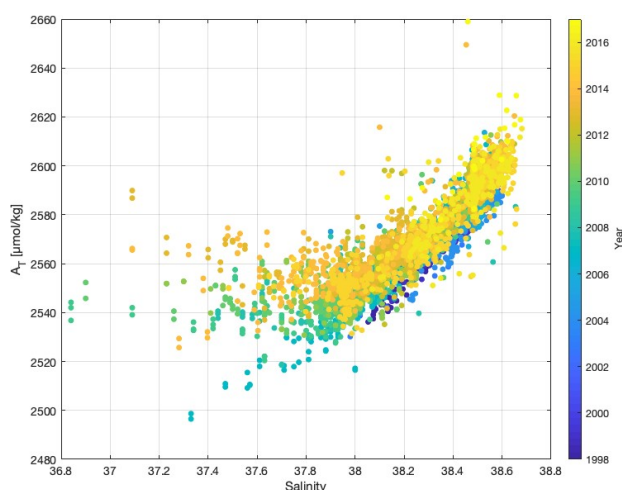
The seasonal variability of surface S is more complex. S ranges from 37.2 to 38.6 with higher variability in coastal zone. The haline content in surface is highly variable and driven by evaporation and precipitation in the open ocean while groundwater discharges could affect the surface S in coastal zone [BEJ 17]. During the re-stratification period in offshore, the newly formed deep waters will mix with the Atlantic waters and the LIW that will reinvest the mixed patch, a phenomenon that seems to be more pronounced in the Ligurian Sea, probably because the mixed patch contains more salt. This is due to shallower vertical mixing and a saltier LIW, which is close to the sources in the basin: the Corsica Channel and southern Sardinia [BOS 15].



**Figure 3.** Surface (0-20 m) seasonal variability of  $T$ ,  $S$ ,  $A_T$ ,  $C_T$ ,  $p\text{CO}_2$  and  $\text{pH}$  (total scale) derived from 1998 to 2016 with monthly sampling (grey dots). The coloured dots represent the mean values and the coloured area the standard deviation of the respective values. The main processes underlying observed variations are evaporation, heat loss, precipitation, ground water discharge, mixing of different water masses, and interactions between parameters themselves (see for example figure 4).

The seasonal  $A_T$  cycle generally mimics the one of  $S$ , with highest values in March and September. In surface waters, the  $A_T$  variability is controlled by freshwater addition, the effect of evaporation and  $S$  that contributes to more than 80% [MIL 98]. In the Mediterranean Sea, several studies have shown that the relationship between  $A_T$  and  $S$  is linear [COP 02, COP 93, HAS 15, JIA 14, RIV 10, SCH 07]. The same linear relationship was observed between  $A_T$  and  $S$  with higher  $A_T$  associated to the presence of LIW (highest  $S$  values; figure 4). In the coastal zone, the relationship is more complex and variable from year to year [KAP 17]. Since  $S$  is high in the Mediterranean Sea (concentration basin), total alkalinity is high too: values range from 2500 to 2600  $\mu\text{mol kg}^{-1}$  (annual average  $2557 \pm 15$

$\mu\text{mol kg}^{-1}$  in surface waters in the Ligurian Sea). Low values ( $2500 \mu\text{mol kg}^{-1}$ ) are observed only in the coastal site (Point B). Offshore, the lowest values are mainly due to calcium carbonate sedimentation ( $\text{CaCO}_3$ ) and Atlantic water inflows.

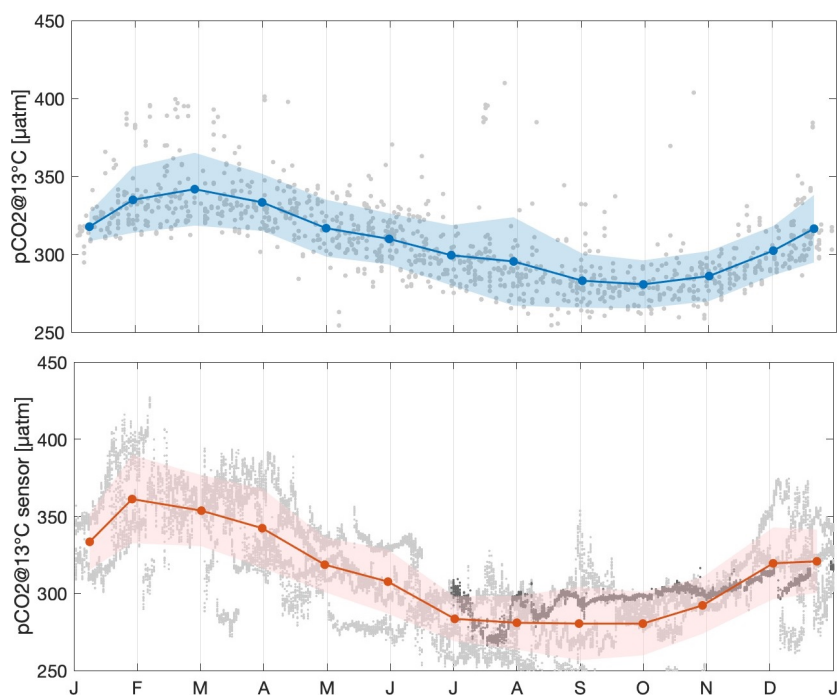


**Figure £.4.** Relationship between  $A_T$  and  $S$  for the entire water column (0-2400m) in the Ligurian Sea (see map in figure £.1). The different values of  $A_T$  and  $S$  are attributable to the different water masses composing the water column and to long term variations (the colour indicates the range of year: 1998-2016).

In the Ligurian Sea,  $C_T$  concentrations in surface waters range between 2200 and 2320  $\mu\text{mol kg}^{-1}$ . As opposed to  $A_T$ , the seasonal cycle of  $C_T$  is pronounced and mirrors the SST cycle:  $C_T$  is maximum in March, followed by a sharp decline until July and a gradual decrease until November after which it increases again. The seasonal cycle, here represented from all data available in the Ligurian Sea is a robust feature at local scale, as seen at both Point B [KAP 17] and DYFAMED sites [COP 02, HAG 16].

The seasonal pattern of  $p\text{CO}_2$  is also pronounced and mainly controlled by SST and  $C_T$ . It is higher during the stratification and warm period in summer and lower during “cold” winter. For the Ligurian Sea,  $p\text{CO}_2$  values range from 300 to 550  $\mu\text{atm}$  as already reported for the DYFAMED site [COP 02, COP 04, HOO 01, MER 18b] and Point B [KAP 17]. This is also the range of  $p\text{CO}_2$  values observed in 1998-2016 in this region from various platforms and included in SOCAT database [BAK 16]. The  $p\text{CO}_2$  is highly dependent on the T variability: T increase of  $+12^\circ\text{C}$  from winter to summer would lead to increase  $p\text{CO}_2$  by 200  $\mu\text{atm}$ .

To separate this effect,  $p\text{CO}_2$  has been normalized to constant T (here  $13^\circ\text{C}$  for winter, thereafter named  $p\text{CO}_2@13\text{C}$ ) using the method described by Takahashi et al. [TAK 93] (figure £.5).  $p\text{CO}_2@13\text{C}$  increases when the mixed layer deepens in winter ( $C_T$  maximum). When primary production increases in March/April, the productive layer is mostly between 0 to 40 m and  $p\text{CO}_2@13\text{C}$ , like  $C_T$ , decreases [COP 02].



**Figure £.5.** Top: seasonal variations of  $p\text{CO}_2@13\text{C}$  in surface (0-20m) derived from discrete measurement of  $C_T$  and  $A_T$  (grey dots) in the Ligurian Sea (see map in figure £.1). Bottom: seasonal variations of  $p\text{CO}_2@13\text{C}$  derived from hourly surface measurements of  $p\text{CO}_2$  with CARIOCA sensor at the DYFAMED/BOUSSOLE (grey light) and from  $\text{CO}_2$ -PRO sensor in W1M3A sites (grey dark). Discrete and semi-continuous estimations exhibit similar seasonal variations ranging from 250 to 400  $\mu\text{atm}$ , and follows the  $C_T$  seasonal cycle (figure £.3). Although there are uncertainties attached to  $p\text{CO}_2$  calculations based on  $C_T/A_T$  pairs, the  $p\text{CO}_2$  and  $p\text{CO}_2@13\text{C}$  seasonal cycles presented in figures £.3 and £.5 confirm the overall quality of  $C_T/A_T$  data that are used to detect long-term trends.

Finally, SST and  $C_T$  influence strongly the seasonal signal of pH [HAG 16, YAO 16]. In the Ligurian Sea, surface pH at total scale ranges between 8 and 8.15 (figure

£.3). It is highest in winter when vertical mixing of surface water with cold and  $C_T$  enriched deeper water is predominant and the exchanges of  $CO_2$  with the atmosphere is important. Surface pH is still high in March/April when primary production increases as a result of the displacement of the carbonate equilibrium related to  $CO_2$  consumption [COP 02]. Finally, surface pH is lowest in summer during the warm stratification period.

#### **£.4. Long-term changes of the carbonate system and acidification**

Long-term trends of carbonate system in the surface, intermediate and deep waters provide crucial information on climate and anthropogenic impacts and allow to emphasize some anomalies. These observations are essential to explain the processes that govern these trends in the Mediterranean Sea [TOU 09, YAO 16]: warming, increase in atmospheric  $CO_2$ , ocean dynamics and changes in biological communities.

In this chapter, trends have been estimated using monthly or annual data measured at different depths: surface (0-20 m), intermediate (300-800 m) and deep (> 2000 m). Even though climate change impacts are usually detectable after 30 years (e.g., [MCK 11]), we establish here for the first time, trend values for carbonate system in the Ligurian Sea based on 18-year time series.

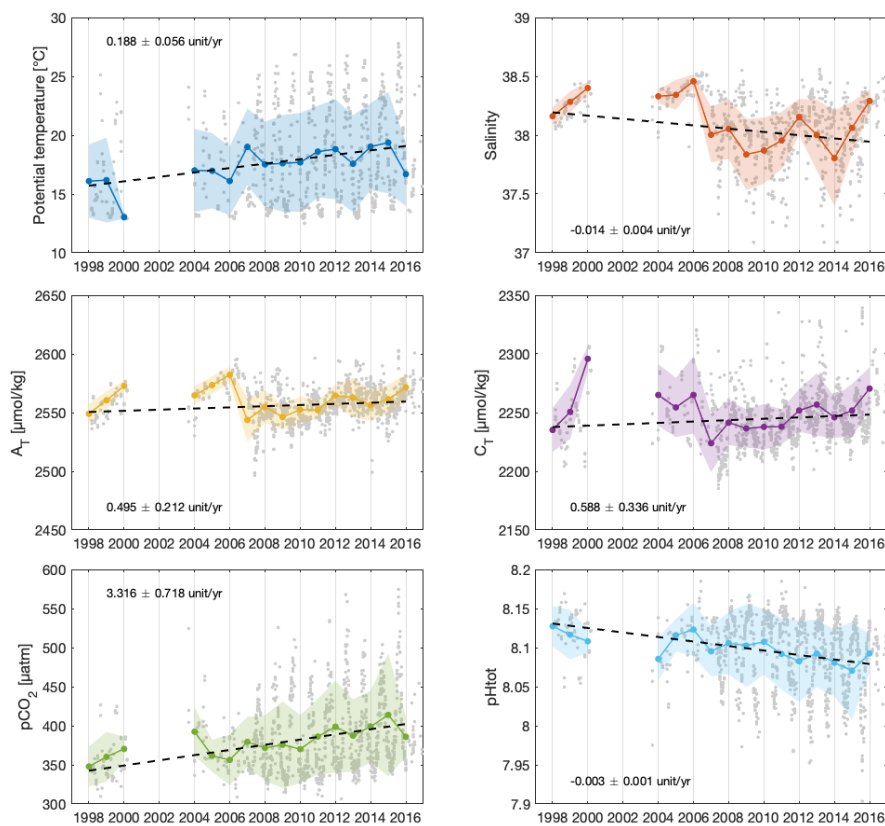
##### **£4.1. Surface trends**

At the surface (0-20 m), both  $C_T$  and  $A_T$  exhibit a positive trend:  $0.59 \pm 0.34 \mu\text{mol kg}^{-1} \text{ yr}^{-1}$  for  $C_T$  and  $0.50 \pm 0.21 \mu\text{mol kg}^{-1} \text{ yr}^{-1}$  for  $A_T$  (figure £.6).  $pCO_2$  and pH (total scale) show respectively an increase of  $3.3 \pm 0.7 \mu\text{atm yr}^{-1}$  and a decrease of  $-0.003 \pm 0.001 \text{ unit yr}^{-1}$  from 1998 to 2016. This is consistent with the coastal observations performed at Point B [KAP 17]. It can therefore be concluded that, at the basin scale, the different series (Point B, Dyfamed, Antares) lead to the same result:  $pCO_2$  increases, leading to a decline in pH.

The  $pCO_2$  trend derived here from monthly discrete measurements of  $C_T$  and  $A_T$  is consistent with the trend estimated by Merlivat et al. [MER 18b] using the  $pCO_2$  sensor deployed during two different periods (1995-1997 and 2013-2015). Based on CARIOCA hourly measurements, an annual increase of  $C_T$ ,  $+1.40 \pm 0.15 \mu\text{mol kg}^{-1} \text{ yr}^{-1}$ , increase of  $pCO_2$ ,  $2.30 \pm 0.23 \mu\text{atm yr}^{-1}$ , and a decrease of pH  $-0.0022 \pm 0.0002$  are computed. Additionally, the fugacity of  $CO_2$  ( $fCO_2$ ) from surface water measured during all cruises in the Ligurian Sea [BAK 16] provides a  $fCO_2$  trend of

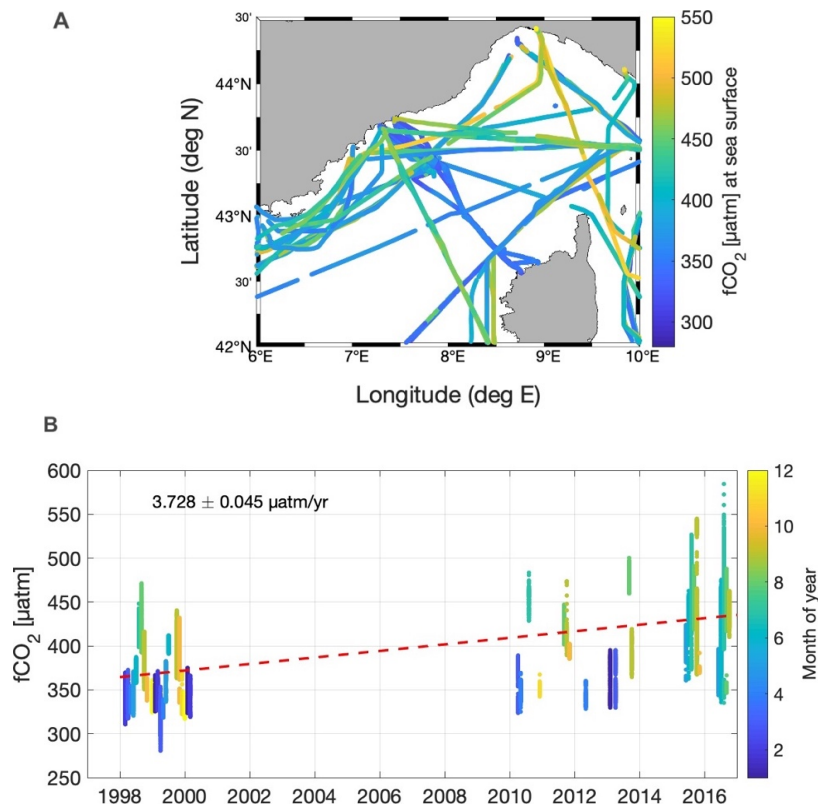
$+3.73 \pm 0.05 \mu\text{atm yr}^{-1}$  for 1998-2016 (figure £.7), although we note that no data were available in SOCAT during 2001-2009 (in surface  $\text{pCO}_2$  and  $\text{fCO}_2$  are similar).

The estimated increase in  $\text{pCO}_2$  of  $+2.3$  to  $+3 \mu\text{atm yr}^{-1}$  are higher than in the atmosphere (about  $2 \text{ ppm yr}^{-1}$  as recorded at station Lampedusa; [DLU 18]) suggesting that the  $\text{CO}_2$  sink is decreasing. Most of this signal is due to both  $C_T$  increase and warming observed in recent years (figure £.6), but opposed to the unexpected positive trend in  $A_T$ .



**Figure £.6.** Despite the scattering of data, long-term trends of potential  $T$ ,  $S$ ,  $A_T$ ,  $C_T$ ,  $\text{pCO}_2$  and  $\text{pH}$  (total scale) are visible in the surface waters (0-20 m) from 1998 to 2016. The coloured dots represent the mean values and the coloured area the standard deviation of the respective values.

Using surface  $p\text{CO}_2$  observations available in the Ligurian Sea region ( $42.5^\circ\text{N}$ - $44.5^\circ\text{N}$ ,  $6^\circ\text{E}$ - $10^\circ\text{E}$ ) in SOCAT version 6 [BAK 16] and assuming a  $A_T/S$  relationship based on Ligurian Sea dataset (figure £.4), we calculate a pH trend of  $-0.0026$  units  $\text{yr}^{-1}$  for the period 1998-2016, close to the CARIOCA sensor result ( $-0.0022 \pm 0.0002$ ) and close to the pH trend ( $-0.003 \pm 0.001$  units  $\text{yr}^{-1}$ ) evaluated from  $C_T$  and  $A_T$  (figure £.6). The difference of pH trend between these three estimates may be linked to the changes in  $A_T$  that are disregarded when  $A_T$  is derived from  $S$ . Therefore, pH trend also depends on  $A_T$  in this region although the origin of the observed positive  $A_T$  trend is not explained yet [KAP 17]. However, all results based on different observations indicate a clear pH decrease in the Ligurian Sea in the last two decades. These results reinforce the acidification issue already reported in the Mediterranean Sea [WMO 14].

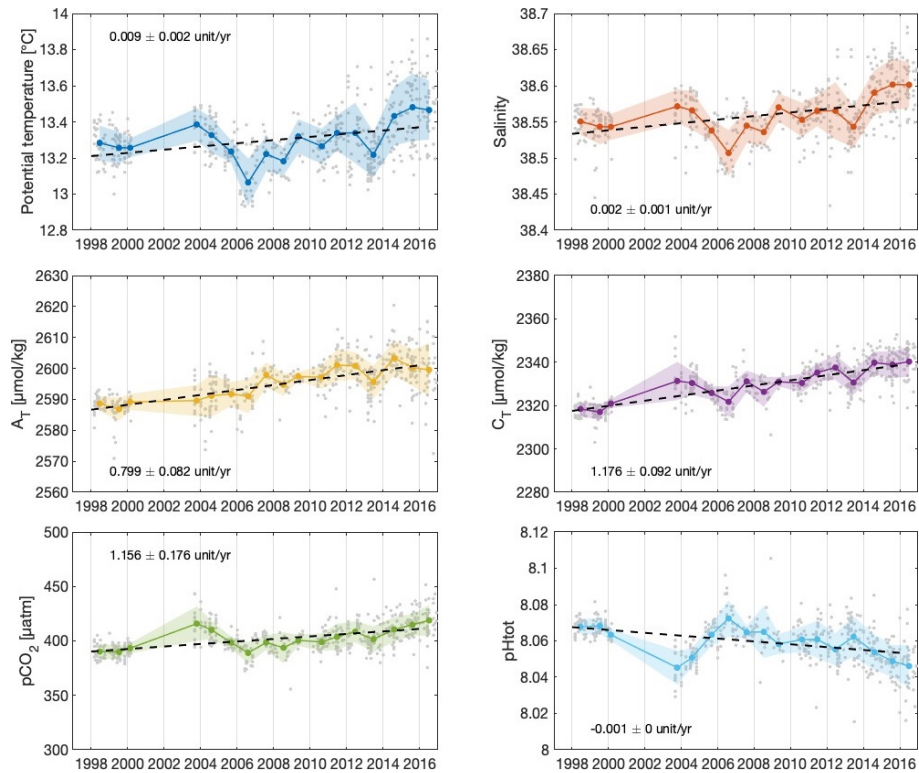


**Figure £.7.** A) Location of  $f\text{CO}_2$  observations in the Ligurian Sea from the SOCAT-v6 database [BAK 16]. Colour code is  $f\text{CO}_2$  at sea surface ( $\mu\text{atm}$ ). B) SOCAT  $f\text{CO}_2$  data for the period 1998-2016 in the Ligurian Sea (colour code is the month). The red line is the trend of  $3.73 \pm 0.05 \mu\text{atm yr}^{-1}$  derived from all seasons. Despite the lack of data

from 2001 to 2009, the averaged trend seems significant when the series of the different seasons are merged.

#### £.4.2. Interior trends

Recent changes observed in the LIW and WMDW characteristics becoming warmer and saltier in the Northwestern basin modified the biogeochemical distributions in the water column in the Ligurian Sea [COP 18, PAS 15] and probably the carbonate variables trends.

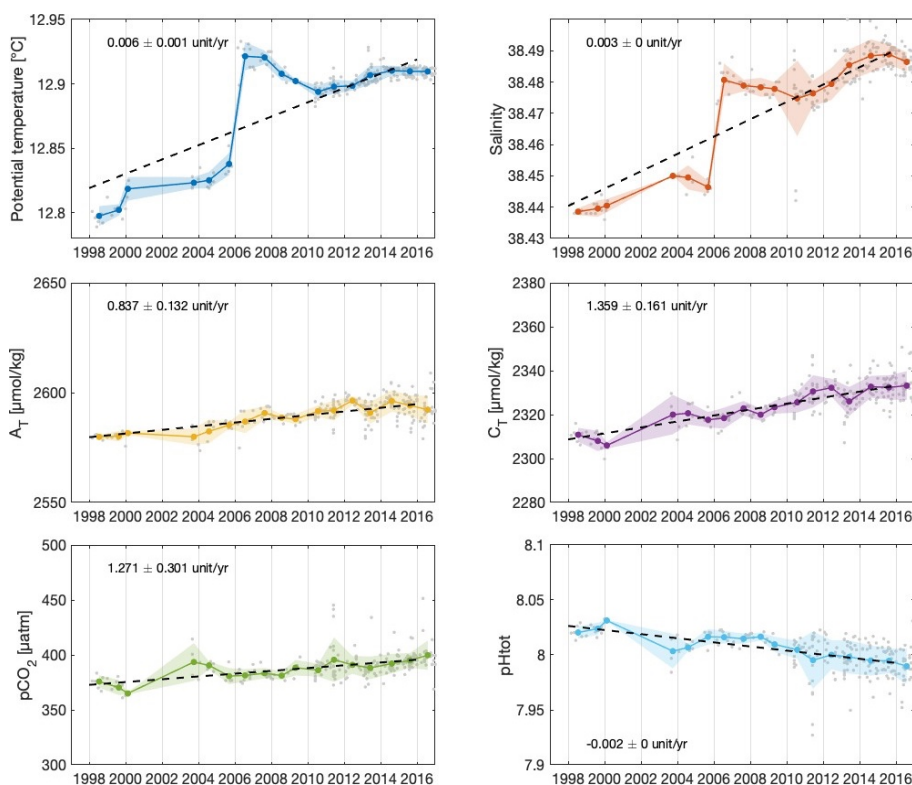


**Figure £.8.** Long-term trend in the intermediate waters (300-800 m) of potential  $T$ ,  $S$ ,  $A_T$ ,  $C_T$ ,  $p\text{CO}_2$  and  $\text{pH}$  (total scale) from 1998 to 2016. The coloured dots represent the mean values and the coloured area the standard deviation of the respective values.



In the layer 300-800m, we used observations from DYFAMED, ANTARES, DEWEX and MOOSE-GE cruises. At that depth, no seasonal signal is observed (figure £.2). Total alkalinity and carbon show a positive trend with a more sustained increase for the  $C_T$  and  $A_T$  than in surface (respectively  $+ 1.18 \pm 0.09$  and  $+ 0.80 \pm 0.08 \mu\text{mol kg}^{-1} \text{yr}^{-1}$ ; figure £.8).  $p\text{CO}_2$  shows an increase around  $1.16 \pm 0.18 \mu\text{atm yr}^{-1}$ , less important than in surface, which results in a lower decrease of pH ( $-0.001 \text{ unit yr}^{-1}$ ). Although  $C_T$  increase is significant with depth, the difference of  $p\text{CO}_2$  and pH trends in surface and deeper layer is likely linked to the warming up of the surface waters.

In deep waters, below 2000 m,  $A_T$ ,  $C_T$ ,  $p\text{CO}_2$  and pH (total scale) show the same trend as in the 300-800m layer, with slightly higher values for  $p\text{CO}_2$  and pH ( $1.27 \pm 0.30 \mu\text{atm yr}^{-1}$  and  $-0.002 \text{ unit yr}^{-1}$ , respectively; figure £.9).



**Figure £.9.** Long-term trend in the deep waters (below 2000 m) of potential  $T$ ,  $S$ ,  $A_T$ ,  $C_T$ ,  $p\text{CO}_2$  and pH (total scale) from 1998 to 2016. The coloured dots represent the

*mean values and the coloured area the standard deviation of the respective values.  
Note the anomaly observed in 2005/2006 only for T and S, discussed in the text.*

The trends in deep waters have been also impacted by the 2005/2006 anomaly where an abrupt vertical mixing in the Ligurian Sea conducted to warmer, more saline and more oxygenated newly formed deep water that had invaded the western basin [MAR 10, SCH 08, SMI 08]. This rapid change is clearly visible on potential T and S trend (figure £.9) and was already discussed in many papers [HOU 16, MAR 10, SCH 08, SMI 08, ZUN 12].

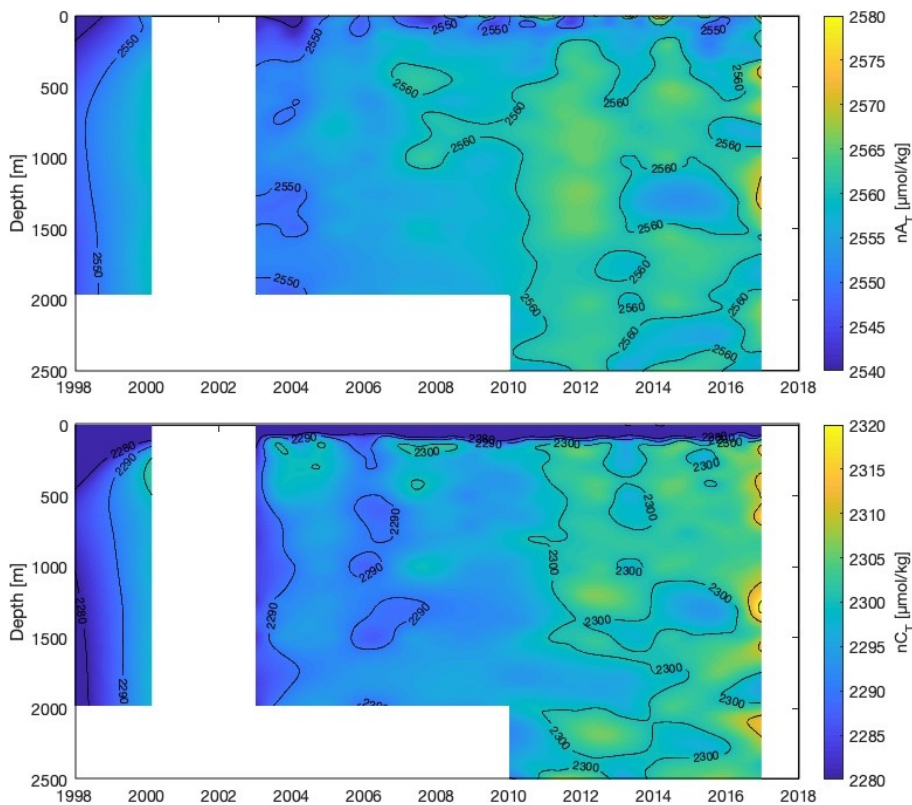
The abrupt pH increase observed in 2005/2006 in the layer 300-800m (figure £.8) coincides with an increase in S, potential T, total carbon and alkalinity [TOU 09, TOU 11]. This event could be related to the modification of the main deep-water formation site in the Eastern Mediterranean basin. Indeed, in the late 1980s - early 1990s, nearly 20% of the eastern basin bottom waters were replaced by very dense waters initially formed in the Aegean Sea instead of the original deep-water formation site in the Adriatic Sea (see Chapter Prieu). This phenomenon, known as the Eastern Mediterranean Transient (EMT), has disrupted the distribution of the main water masses [ROE 07]. One of the consequences for the waters of the Ligurian Sea, is that an older water mass, and therefore poorer in oxygen (reinforcement of the Oxygen Minimum Layer) and richer in anthropogenic carbon, has probably been introduced at intermediate depths.

Another hypothesis to explain this anomaly would be the absence and/or low intensity of convection processes for several years, which led to a warmer, saltier and more oxygen-depleted LIW. The outbreak of intense convection in 2005 in the Gulf of Lion and in 2006 in the Ligurian Sea, due to successive cold winters, led to a massive supply of warmer and saltier water from surface to the bottom. In 2005, this would have occurred through deep water dispersion mechanism following the very intense bottom reaching convection event in the central Gulf of Lion (called Western Mediterranean Transient, WMT) and in 2006 by intense vertical mixing in the Ligurian Sea, which led to a very rapid increase of T, S and O<sub>2</sub> [COP 18].

### **£.5. Changes in the carbonate system in the Ligurian Sea in the Mediterranean Sea and global contexts**

A model simulation of anthropogenic carbon storage and acidification indicate that the surface water acidification rate in the Mediterranean Sea increased since 1800 (estimation of delta pH of -0.08 unit; [PAL 15]). In the Ligurian Sea, in situ dataset from 1998 to 2016 presented here provide the same delta pH range (-0.08 to

-0.05 units in the surface and deep waters, respectively). For this period, Merlivat et al. [MER 18b] compute a change of  $-0.040 \pm 0.004$  for surface waters. From basic marine carbonate chemistry, it is well known that, as atmospheric  $\text{CO}_2$  increases, surface-ocean  $\text{pCO}_2$  increases, reducing seawater pH. Deep waters of the Mediterranean Sea exhibit changes in pH which are higher than typical global ocean deep waters due to faster ventilation times. Furthermore, typical Mediterranean Sea anomalies as EMT and WMT signals, have severely disrupted the distribution of water masses. As the Mediterranean Sea is warmer and more alkaline than others offshore areas, this could potentially represent a larger and faster decrease in pH and then higher acidification impacts.



**Figure 10.** Time series of normalized  $A_T$  ( $nA_T$ ) and normalized  $C_T$  ( $nC_T$ ) in the Ligurian Sea from 1998 to 2016 (all data shown in figure 1 are merged). The increase of these parameters visible after 2010 from 300 to 2500 m could result from anthropogenic impact and water mass characteristic modifications.

To observe change in the water column, we estimate a normalized  $A_T$  ( $nA_T$ ) and  $C_T$  ( $nC_T$ ) adapted for the Mediterranean Sea ( $nX = X * 38/S$  where  $X$  corresponds to  $C_T$  and  $A_T$  values). In figure 10, variability of  $nA_T$  and  $nC_T$  shows an accumulation of  $CO_2$  and  $A_T$  after 2010 from 300 to 2500 m. This could be a signal of anthropogenic impact but also due to a modification of intermediate and deep-water masses characteristics. After the WMT, local intense deep convection occurred in the Ligurian Sea in 2010, 2012 and 2013. These events were short and accompanied by a new deep-water spreading recently formed in the Gulf of Lion [COP 18]. They produced a large input of  $S$  and heat fluxes from surface to deep waters. It is possible that this supply induces a large transport of  $CO_2$  from surface to the intermediate and deep waters in addition to the rapid increase of  $S$  that stratified the deep-water column.

These observations highlight that the Ligurian Sea is a key region to observe changes in the carbonate chemistry and it highlights the importance of maintaining long-time series of the oceanic carbonate system in relation to their hydrological and biogeochemical properties. This is particularly true in a very dynamic oceanic region like the Mediterranean Sea in terms of water-mass changes and ventilation process.

## 6. Conclusions

This synthesis shows the consistency of different analyses carried out through different oceanographic cruises and time-series stations located in the Ligurian Sea that now help to detect and understand long-term of  $A_T$ ,  $C_T$ ,  $pCO_2$  and  $pH$  trends in this region. It is also a unique database to validate biogeochemical simulations to better understand the future role of Mediterranean Sea for both  $CO_2$  uptake and acidification issues in the context of global changes. The observations conducted since 1995 in the Ligurian Sea show a clear increase of  $pCO_2$  and associated decrease of  $pH$  over 18 years. This is observed in surface from direct  $pCO_2$  measurements, as well as in the water column (from  $A_T$ ,  $C_T$  observations). The seasonality of the carbonates system is now well observed in both coastal and open-ocean waters, and long-term trends start to be detected. However, the synthesis presented here also highlights significant interannual variability as observed in 2004-2007 at depth. In this context, autonomous sensors for  $pCO_2$ ,  $pH$ , oxygen and nutrients, not only in surface but also in water column (e.g., moorings, Argo floats), and included in integrated observing system should improve our vision of ocean carbon variables that become mandatory to constrain ocean acidification projections and the role of the Mediterranean Sea in the fate of the carbon pump and marine ecosystems.

### £.7. Acknowledgements

Service SNAPO-CO<sub>2</sub>, supported by CNRS/INSU and OSU Ecce Terra, is acknowledged for analyzing C<sub>T</sub> and A<sub>T</sub> at LOCEAN since 2004. Thanks are due to the Service d'Observation Rade de Villefranche (SO-Rade) of the Observatoire Océanologique and the Service d'Observation en Milieu Littoral (SOMLIT/CNRS-INSU) for their kind permission to use the Point B data. Authors are also grateful to the MOOSE observing national network (funded by CNRS-INSU and Research Infrastructure ILICO) which sustain the DYFAMED and ANTARES time series and ship based hydrographic sections in the Northwestern Mediterranean Sea (MOOSE-GE). The Surface Ocean CO<sub>2</sub> Atlas (SOCAT) is an international effort, endorsed by the International Ocean Carbon Coordination Project (IOCCP), the Surface Ocean Lower Atmosphere Study (SOLAS) and the Integrated Marine Biosphere Research (IMBeR) program, to deliver a uniformly quality-controlled surface ocean CO<sub>2</sub> database. The many researchers and funding agencies responsible for the collection of data and quality control are thanked for their contributions to SOCAT.

### £.8. Bibliography

- [ALV 14] ALVAREZ M., SANLEON-BARTOLOME H., TANHUA T., MINTROP L., LUCHETTA A., CANTONI C., SCHROEDER K., CIVITARESE G., « The CO<sub>2</sub> system in the Mediterranean Sea: a basin wide perspective », *Ocean Science*, n° 10, p. 69-92, 2014.
- [BAK 16] BAKKER D.C.E., PFEIL B., LANDA C.S., METZL N., O'BRIEN K.M., OLSEN A., SMITH K., COSCA C., HARASAWA S., JONES S.D., NAKAOKA S., NOJIRI Y., SCHUSTER U., STEINHOFF T., SWEENEY C., TAKAHASHI T., TILBROOK B., WADA C., WANNINKHOF R., ALIN S.R., BALESTRINI C.F., BARBERO L., BATES N.R., BIANCHI A.A., BONOU F., BOUTIN J., BOZEC Y., BURGER E.F., CAI W.J., CASTLE R.D., CHEN L.Q., CHIERICI M., CURRIE K., EVANS W., FEATHERSTONE C., FEELY R.A., FRANSSON A., GOYET C., GREENWOOD N., GREGOR L., HANKIN S., HARDMAN-MOUNTFORD N.J., HARLAY J., HAUCK J., HOPPEMA M., HUMPHREYS M.P., HUNT C., HUSS B., IBANHEZ J.S.P., JOHANNESSEN T., KEELING R., KITIDIS V., KORTZINGER A., KOZYL A., KRASAKOPOULOU E., KUWATA A., LANDSCHUTZER P., LAUVSET S.K., LEFEVRE N., LO MONACO C., MANKE A., MATHIS J.T., MERLIVAT L., MILLERO F.J., MONTEIRO P.M.S., MUNRO D.R., MURATA A., NEWBERGER T., OMAR A.M., ONO T., PATERSON K., PEARCE D., PIERROT D., ROBBINS L.L., SAITO S., SALISBURY J., SCHLITZER R., SCHNEIDER B., SCHWEITZER R., SIEGER R., SKJELVAN I., SULLIVAN K.F., SUTHERLAND S.C., SUTTON A.J., TADOKORO K., TELSZEWSKI M., TUMA M., VAN HEUVEN S., VANDEMARK D., WARD B., WATSON A.J., XU S.Q., « A multi-decade record of high-quality fCO<sub>2</sub>(2) data in version 3 of the Surface Ocean CO<sub>2</sub> Atlas (SOCAT) », *Earth System Science Data*, n° 8, p. 383-413, 2016.

- [BAT 14] BATES N.R., ASTOR Y.M., CHURCH M.J., CURRIE K., DORE J.E., GONZALEZ-DAVILA M., LORENZONI L., MULLER-KARGER F., OLAFSSON J., SANTANA-CASIANO J.M., « A Time-Series View of Changing Surface Ocean Chemistry Due to Ocean Uptake of Anthropogenic CO<sub>2</sub> and Ocean Acidification », *Oceanography*, n° 27, p. 126-141, 2014.
- [BEJ 17] BEJANNIN S., VAN BEEK P., STIEGLITZ T., SOUHOUT M., TAMBORSKI J., « Combining airborne thermal infrared images and radium isotopes to study submarine groundwater discharge along the French Mediterranean coastline », *Journal of Hydrology-Regional Studies*, n° 13, p. 72-90, 2017.
- [BOS 15] BOSSE A., TESTOR P., MORTIER L., PRIEUR L., TAILLANDIER V., D'ORTENZIO F., COPPOLA L., « Spreading of Levantine Intermediate Waters by submesoscale coherent vortices in the Northwestern Mediterranean Sea as observed with gliders », *Journal of Geophysical Research-Oceans*, n° 120, p. 1599-1622, 2015.
- [BOS 17] BOSSE A., TESTOR P., MAYOT N., PRIEUR L., D'ORTENZIO F., MORTIER L., LE GOFF H., GOURCUFF C., COPPOLA L., LAVIGNE H., RAIMBAULT P., « A submesoscale coherent vortex in the Ligurian Sea: From dynamical barriers to biological implications », *Journal of Geophysical Research-Oceans*, n° 122, p. 6196-6217, 2017.
- [BOZ 13] BOZZANO R., PENSIERI S., CARDIN V., BRUNETTI F., BENSI M., PENSIERI L., PETIHAKIS G., TSAGARAKI T.M., NTOUMAS M., PODARAS D., PERIVOLIOTIS L., IEEE, « The M3A Network of Open Ocean Observatories in the Mediterranean Sea », dans, *2013 Mts/leee Oceans - Bergen*, 2013.
- [CAN 15] CANEPA E., PENSIERI S., BOZZANO R., FAIMALI M., TRAVERSO P., CAVALERI L., « The ODAS Italia 1 buoy: More than forty years of activity in the Ligurian Sea », *Progress In Oceanography*, n° 135, p. 48-63, 2015.
- [COP 02] COPIN-MONTÉGUT C., BÉGOVIC M., « Distributions of carbonate properties and oxygen along the water column (0-2000m) in the central part of the NW Mediterranean Sea (Dyfamed site): influence of winter vertical mixing on air-sea CO<sub>2</sub> and O<sub>2</sub> exchanges », *Deep-Sea Research Part II-Topical Studies in Oceanography*, n° 49, p. 2049-2066, 2002.
- [COP 04] COPIN-MONTÉGUT C., BÉGOVIC M., MERLIVAT L., « Variability of the partial pressure of CO<sub>2</sub> on diel to annual time scales in the Northwestern Mediterranean Sea », *Marine Chemistry*, n° 85, p. 169-189, 2004.
- [COP 18] COPPOLA L., LEGENDRE L., LEFÈVRE D., PRIEUR L., TAILLANDIER V., DIAMOND RIQUIER E., « Seasonal and inter-annual variations of dissolved oxygen in the Northwestern Mediterranean Sea (DYFAMED site) », *Progress In Oceanography*, n° 162, p. 187-201, 2018.
- [COP 93] COPIN-MONTÉGUT C., « Alkalinity and carbon budgets in the Mediterranean sea », *Global Biogeochemical Cycles*, n° 7, p. 915-925, 1993.
- [DEV 17] DEVRIES T., HOLZER M., PRIMEAU F., « Recent increase in oceanic carbon uptake driven by weaker upper-ocean overturning », *Nature*, n° 542, p. 215-218, 2017.

- [DIC 87] DICKSON A.G., MILLERO F.J., « A comparison of the equilibrium constants for the dissociation of carbonic-acid in seawater media », *Deep-Sea Research Part a-Oceanographic Research Papers*, n° 34, p. 1733-1743, 1987.
- [DIC 90] DICKSON A.G., « Thermodynamics of the dissociation of boric-acid in synthetic sea water from 273.15-K to 318.15-K », *Deep-Sea Research Part a-Oceanographic Research Papers*, n° 37, p. 755-766, 1990.
- [DLU 18] DLUGOKENCKY E.J., LANG P.M., MUND J.W., CROTWELL A.M., CROTWELL M.J., THONING K.W. (2018). "Atmospheric Carbon Dioxide Dry Air Mole Fractions from the NOAA ESRL Carbon Cycle Cooperative Global Air Sampling Network, 1968-2017." *Version: 2018-07-31*, [ftp://aftp.cmdl.noaa.gov/data/trace\\_gases/CO2/flask/surface/](ftp://aftp.cmdl.noaa.gov/data/trace_gases/CO2/flask/surface/).
- [DOE 94] DOE, « Handbook of methods for the analysis of the various parameters of the carbon dioxide system in sea water - Version 2 », dans A.G. DICKSON ET C. GOYET (dir.), ORNL/CDIAC-74, San Diego, 1994.
- [EDM 70] EDMOND J.M., « High precision determination of titration alkalinity and total carbon dioxide content of sea water by potentiometric titration », *Deep-Sea Research*, n° 17, p. 737-&, 1970.
- [GAT 11] GATTUSO J.-P., HANSSON L., *Ocean acidification*, Oxford University Press, Oxford, 2011.
- [GAT 15] GATTUSO J.P., MAGNAN A., BILLE R., CHEUNG W.W.L., HOWES E.L., JOOS F., ALLEMAND D., BOPP L., COOLEY S.R., EAKIN C.M., HOEGH-GULDBERG O., KELLY R.P., PORTNER H.O., ROGERS A.D., BAXTER J.M., LAFFOLEY D., OSBORN D., RANKOVIC A., ROCHETTE J., SUMAILA U.R., TREYER S., TURLEY C., « Contrasting futures for ocean and society from different anthropogenic CO<sub>2</sub> emissions scenarios », *Science*, n° 349, 2015.
- [HAG 16] HAGENS M., MIDDELBURG J.J., « Attributing seasonal pH variability in surface ocean waters to governing factors », *Geophysical Research Letters*, n° 43, p. 12528-12537, 2016.
- [HAS 15] HASSOUN A.E.R., GEMAYEL E., KRASAKOPOULOU E., GOYET C., ABBOUD-ABI SAAB M., ZIVERI P., TOURATIER F., GUGLIELMI V., FALCO C., « Modeling of the Total Alkalinity and the Total Inorganic Carbon in the Mediterranean Sea », *Journal of Water Resources and Ocean Science*, p. 24-32, 2015.
- [HOO 01] HOOD E.M., MERLIVAT L., « Annual to interannual variations of fCO<sub>2</sub> in the Northwestern Mediterranean Sea: Results from hourly measurements made by CARIOCA buoys, 1995-1997 », *Journal of Marine Research*, n° 59, p. 113-131, 2001.
- [HOU 16] HOUPERT L., DURRIEU DE MADRON X., TESTOR P., BOSSE A., D'ORTENZIO F., BOUIN M.N., DAUSSE D., LE GOFF H., KUNESCH S., LABASTE M., COPPOLA L., MORTIER L., RAIMBAULT P., « Observations of open-ocean deep convection in the Northwestern Mediterranean Sea: Seasonal and interannual variability of mixing and deep-water masses for the 2007-2013 Period », *Journal of Geophysical Research-Oceans*, n° 121, p. 8139-8171, 2016.

- [IPC 14] IPCC, Intergovernmental Panel on Climate Change 2013 – The Physical Science Basis: Working Group I Contribution to the Fifth Assessment Report of the Intergovernmental Panel on Climate Change, Cambridge University Press, Cambridge, 2014.
- [JIA 14] JIANG Z.P., TYRRELL T., HYDES D.J., DAI M.H., HARTMAN S.E., « Variability of alkalinity and the alkalinity-salinity relationship in the tropical and subtropical surface ocean », *Global Biogeochemical Cycles*, n° 28, p. 729-742, 2014.
- [KAP 17] KAPSENBERG L., ALLIOUANE S., GAZEAU F., MOUSSEAU L., GATTUSO J.P., « Coastal ocean acidification and increasing total alkalinity in the Northwestern Mediterranean Sea », *Ocean Science*, n° 13, p. 411-426, 2017.
- [LAC 16] LACOUÉ-LABARTHE T., NUNES P., ZIVERI P., CINAR M., GAZEAU F., HALL-SPENCER J.M., HILMI N., MOSCHELLA P., SAFA A., SAUZADE D., TURLEY C., « Impacts of ocean acidification in a warming Mediterranean Sea: An overview », *Regional Studies in Marine Science*, n° 5, p. 1-11, 2016.
- [LEE 11] LEE K., SABINE C.L., TANHUA T., KIM T.W., FEELY R.A., KIM H.C., « Roles of marginal seas in absorbing and storing fossil fuel CO<sub>2</sub> », *Energy & Environmental Science*, n° 4, p. 1133-1146, 2011.
- [LEJ 18] LEJEUSNE C., CHEVALDONNE P., PERGENT-MARTINI C., BOUDOURESQUE C.F., PEREZ T., « Climate change effects on a miniature ocean: the highly diverse, highly impacted Mediterranean Sea », *Trends in Ecology & Evolution*, n° 25, p. 250-260, 2010.
- [LEQ 18] LE QUÉRÉ C., ANDREW R.M., FRIEDLINGSTEIN P., SITCH S., HAUCK J., PONGRATZ J., PICKERS P.A., KORSBAKKEN J.I., PETERS G.P., CANADELL J.G., ARNETH A., ARORA V.K., BARBERO L., BASTOS A., BOPP L., CHEVALLIER F., CHINI L.P., CIAIS P., DONEY S.C., GKRTZALIS T., GOLL D.S., HARRIS I., HAVERD V., HOFFMAN F.M., HOPPEMA M., HOUGHTON R.A., HURTT G., ILYINA T., JAIN A.K., JOHANNESSEN T., JONES C.D., KATO E., KEELING R.F., GOLDEWIJK K.K., LANDSCHUTZER P., LEFEVRE N., LIENERT S., LIU Z., LOMBARDOZZI D., METZL N., MUNRO D.R., NABEL J., NAKAOKA S., NEILL C., OLSEN A., ONO T., PATRA P., PEREGON A., PETERS W., PEYLIN P., PFEIL B., PIERROT D., POULTER B., REHDER G., RESPLANDY L., ROBERTSON E., ROCHER M., RODENBECK C., SCHUSTER U., SCHWINGER J., SEFERIAN R., SKJELVAN I., STEINHOFF T., SUTTON A., TANS P.P., TIAN H.Q., TILBROOK B., TUBIELLO F.N., VAN DER LAAN-LUIJKX I.T., VAN DER WERF G.R., VIOVY N., WALKER A.P., WILTSHIRE A.J., WRIGHT R., ZAEHLE S., ZHENG B., « Global Carbon Budget 2018 », *Earth System Science Data*, n° 10, p. 2141-2194, 2018.
- [MAR 02a] MARTY J.-C., CHIAVÉRINI J., PIZAY M.D., AVRIL B., « Seasonal and interannual dynamics of nutrients and phytoplankton pigments in the western Mediterranean Sea at the DYFAMED time-series station (1991-1999) », *Deep-Sea Research Part II-Topical Studies in Oceanography*, n° 49, p. 1965-1985, 2002.
- [MAR 10] MARTY J.-C., CHIAVÉRINI J., « Hydrological changes in the Ligurian Sea (NW Mediterranean, DYFAMED site) during 1995-2007 and biogeochemical consequences », *Biogeosciences*, n° 7, p. 2117-2128, 2010.



- [MCK 11] MCKINLEY G.A., FAY A.R., TAKAHASHI T., METZL N., « Convergence of atmospheric and North Atlantic carbon dioxide trends on multidecadal timescales », *Nature Geoscience*, n° 4, p. 606-610, 2011.
- [MEH 73] MEHRBACH C., CULBERSON C.H., HAWLEY J.E., PYTKOWICZ R.M., « Measurement of apparent dissociation constants of carbonic-acid in seawater at atmospheric pressure », *Limnology and Oceanography*, n° 18, p. 897-907, 1973.
- [MER 18b] MERLIVAT L., BOUTIN J., ANTOINE D., BEAUMONT L., GOLBOL M., VELLUCCI V., « Increase of dissolved inorganic carbon and decrease in pH in near-surface waters in the Mediterranean Sea during the past two decades », *Biogeosciences*, n° 15, p. 5653-5662, 2018.
- [MIL 05] MILLOT C., TAUPIER-LETAGE I., « Circulation in the Mediterranean Sea », dans A. SALIOT (dir.), *The Mediterranean Sea*, Springer Berlin Heidelberg, Berlin, Heidelberg, 2005.
- [MIL 98] MILLERO F.J., LEE K., ROCHE M., « Distribution of alkalinity in the surface waters of the major oceans », *Marine Chemistry*, n° 60, p. 111-130, 1998.
- [OLS 16] OLSEN A., KEY R.M., VAN HEUVEN S., LAUVSET S.K., VELO A., LIN X.H., SCHIRNICK C., KOZYR A., TANHUA T., HOPPEMA M., JUTTERSTROM S., STEINFELDT R., JEANSSON E., ISHII M., PEREZ F.F., SUZUKI T., « The Global Ocean Data Analysis Project version 2 (GLODAPv2) - an internally consistent data product for the world ocean », *Earth System Science Data*, n° 8, p. 297-323, 2016.
- [PAL 15] PALMIÉRI J., ORR J.C., DUTAY J.C., BÉRANGER K., SCHNEIDER A., BEUVIER J., SOMOT S., « Simulated anthropogenic CO<sub>2</sub> storage and acidification of the Mediterranean Sea », *Biogeosciences*, n° 12, p. 781-802, 2015.
- [PAS 15] PASQUERON DE FOMMERVAULT O., MIGON C., D'ORTENZIO F., RIBERA D' ALCALÀ M., COPPOLA L., « Temporal variability of nutrient concentrations in the Northwestern Mediterranean sea (DYFAMED time-series station) », *Deep-Sea Research Part I-Oceanographic Research Papers*, n° 100, p. 1-12, 2015.
- [PIE 06] PIERROT D.E.L., WALLACE D.W.R., « MS Excel Program Developed for CO<sub>2</sub> System Calculations », *ORNL/CDIAC-105a*, Carbon Dioxide Information Analysis Center, Oak Ridge National Laboratory, U.S. Department of Energy, Oak Ridge, Tennessee, 2006.
- [RIV 10] RIVARO P., MESSA R., MASSOLO S., FRACHE R., « Distributions of carbonate properties along the water column in the Mediterranean Sea: Spatial and temporal variations », *Marine Chemistry*, n° 121, p. 236-245, 2010.
- [ROE 07] ROETHER W., KLEIN B., MANCA B.B., THEOCHARIS A., KIOROGLOU S., « Transient Eastern Mediterranean deep waters in response to the massive dense-water output of the Aegean Sea in the 1990s », *Progress In Oceanography*, n° 74, p. 540-571, 2007.
- [SAB 10] SABINE C.L., TANHUA T., « Estimation of Anthropogenic CO<sub>2</sub> Inventories in the Ocean », *Annual Review of Marine Science*, n° 2, p. 175-198, 2010.

- [SCH 07] SCHNEIDER A., WALLACE D.W.R., KORTZINGER A., « Alkalinity of the Mediterranean Sea », *Geophysical Research Letters*, n° 34, p. 5, 2007.
- [SCH 08] SCHROEDER K., RIBOTTI A., BORGHINI M., SORGENTE R., PERILLI A., GASPARINI G.P., « An extensive western Mediterranean deep-water renewal between 2004 and 2006 », *Geophysical Research Letters*, n° 35, p. 7, 2008.
- [SCH 10] SCHNEIDER A., TANHUA T., KORTZINGER A., WALLACE D.W.R., « High anthropogenic carbon content in the eastern Mediterranean », *Journal of Geophysical Research-Oceans*, n° 115, p. 11, 2010.
- [SCH 17] SCHROEDER K., CHIGGIATO J., JOSEY S.A., BORGHINI M., ARACRI S., SPARNOCCHIA S., « Rapid response to climate change in a marginal sea », *Scientific reports*, n° 7, p. 7, 2017.
- [SMI 08] SMITH R.O., BRYDEN H.L., STANSFIELD K., « Observations of new western Mediterranean deep-water formation using Argo floats 2004-2006 », *Ocean Science*, n° 4, p. 133-149, 2008.
- [TAK 93] TAKAHASHI T., OLAFSSON J., GODDARD J.G., CHIPMAN D.W., SUTHERLAND S.C., « Seasonal variation of CO<sub>2</sub> and nutrients in the high latitude surface oceans. A comparative study », *Global Biogeochemical Cycles*, n° 7, p. 843-878, 1993.
- [TOU 09] TOURATIER F., GOYET C., « Decadal evolution of anthropogenic CO<sub>2</sub> in the Northwestern Mediterranean Sea from the mid-1990s to the mid-2000s », *Deep-Sea Research Part I-Oceanographic Research Papers*, n° 56, p. 1708-1716, 2009.
- [TOU 11] TOURATIER F., GOYET C., « Impact of the Eastern Mediterranean Transient on the distribution of anthropogenic CO<sub>2</sub> and first estimate of acidification for the Mediterranean Sea », *Deep-Sea Research Part I-Oceanographic Research Papers*, n° 58, p. 1-15, 2011.
- [WMO 14] WMO, « Greenhouse Gas Bulletin: The State of Greenhouse Gases in the Atmosphere Based on Global Observations through 2013 », n° 10, 2014.
- [YAO 16] YAO K.M., MARCOU O., GOYET C., GUGLIELMI V., TOURATIER F., SAVY J.P., « Time variability of the north-western Mediterranean Sea pH over 1995-2011 », *Marine Environmental Research*, n° 116, p. 51-60, 2016.
- [ZUN 12] ZUNINO P., SCHROEDER K., VARGAS-YANEZ M., GASPARINI G.P., COPPOLA L., GARCIA-MARTINEZ M.C., MOYA-RUIZ F., « Effects of the Western Mediterranean Transition on the resident water masses: Pure warming, pure freshening and pure heaving », *Journal of Marine Systems*, n° 96-97, p. 15-23, 2012.