



HAL
open science

Cross-border epidemiological data integration and harmonization – Application to malaria in the cross-border area between French Guiana and Brazil

Emmanuel Roux, Raphael Saldanha, Christovam Barcellos, Théophile Mandon, Margarete Do Socorro Mendonca Gomes, Emilie Mosnier, Basma Guarmit, Jean-Christophe Desconnets

► To cite this version:

Emmanuel Roux, Raphael Saldanha, Christovam Barcellos, Théophile Mandon, Margarete Do Socorro Mendonca Gomes, et al.. Cross-border epidemiological data integration and harmonization – Application to malaria in the cross-border area between French Guiana and Brazil. Latin America and the Caribbean Scientific Data Management Workshop, Apr 2018, Rio de Janeiro, Brazil. <hal-02541501>

HAL Id: hal-02541501

<https://hal.science/hal-02541501v1>

Submitted on 16 Apr 2020

HAL is a multi-disciplinary open access archive for the deposit and dissemination of scientific research documents, whether they are published or not. The documents may come from teaching and research institutions in France or abroad, or from public or private research centers.

L'archive ouverte pluridisciplinaire HAL, est destinée au dépôt et à la diffusion de documents scientifiques de niveau recherche, publiés ou non, émanant des établissements d'enseignement et de recherche français ou étrangers, des laboratoires publics ou privés.



HAL Authorization

Cross-border epidemiological data integration and harmonization

Application to malaria in the cross-border area between French Guiana and Brazil

Emmanuel Roux¹, Raphael Saldanha², Christovam Barcellos², Théophile Mandon¹,
Margarete do Socorro Mendonça Gomes³, Emilie Mosnier⁴, Basma Guarmit⁴, Jean-Christophe Desconnets¹

¹ ESPACE-DEV (IRD, Univ. de Montpellier, Univ. de la Réunion, Univ. de la Guyane, Univ. des Antilles), Institut de Recherche pour le Développement, France
² Fiocruz, Instituto de Comunicação e Informação Científica e Tecnológica em Saúde (ICICT), Rio de Janeiro, Brazil
³ Superintendência de Vigilância em Saúde do Estado do Amapá (SVS-AP), Macapá, Amapá, Brazil
⁴ Centre Hospitalier Andrée Rosemon (CHAR), Pôle des Centres Délocalisés de Prévention et de Soins (CDPS), Cayenne, Guyane française



Context

- Malaria: 216 million cases and 445 thousand deaths worldwide in 2016 (WHO, 2017)
- Between 2000 and 2015, 58% and 37% decreases of the mortality and incidence rates, respectively



Ensure healthy lives and promote well-being for all at all ages
Target: By 2030, end the epidemics of AIDS, tuberculosis, malaria and neglected tropical diseases and combat hepatitis, water-borne diseases and other communicable diseases

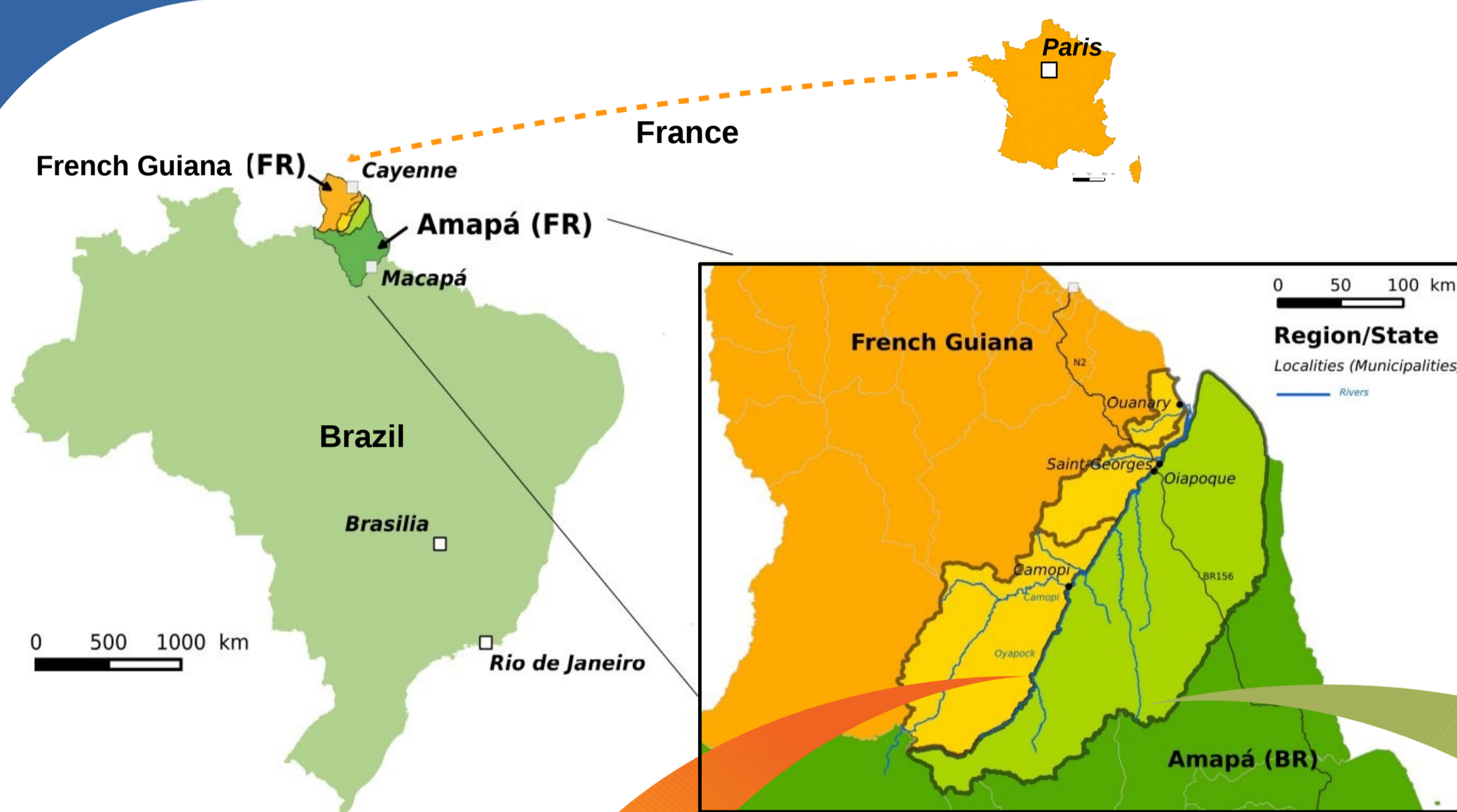
Cross-border malaria considered as a “Major obstacle for malaria elimination” [Wangdi et al., 2015]

Cross-border related issues

- Socio-demographical and environmental contexts that vulnerabilize local populations
- High mobility of pathogen-carrying populations
- Patient follow-up difficulties (situations of illegality, auto-medication, ...)
- Different strategies and means of surveillance, prevention and control of diseases between countries
- Lack of international cooperation: Few regular exchange of comparable data and information between countries
⇒ **Heterogeneous data types and formats, nomenclatures and concepts**

How to ensure cross-border epidemiological data interoperability on an ongoing basis?

Study Region

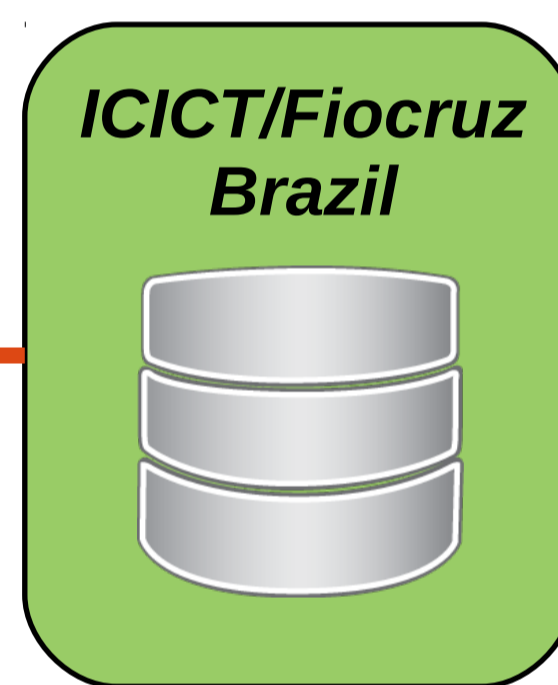
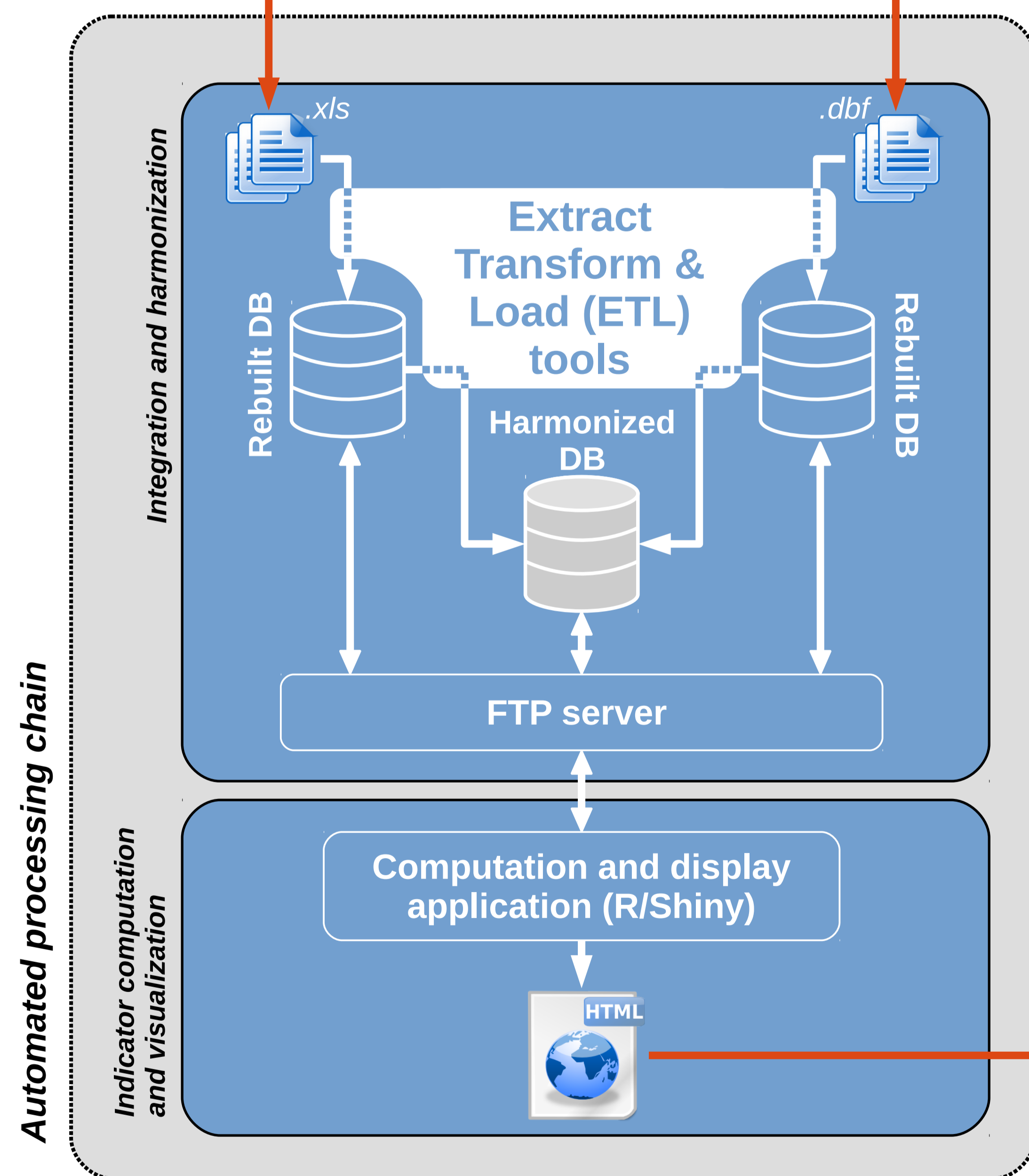
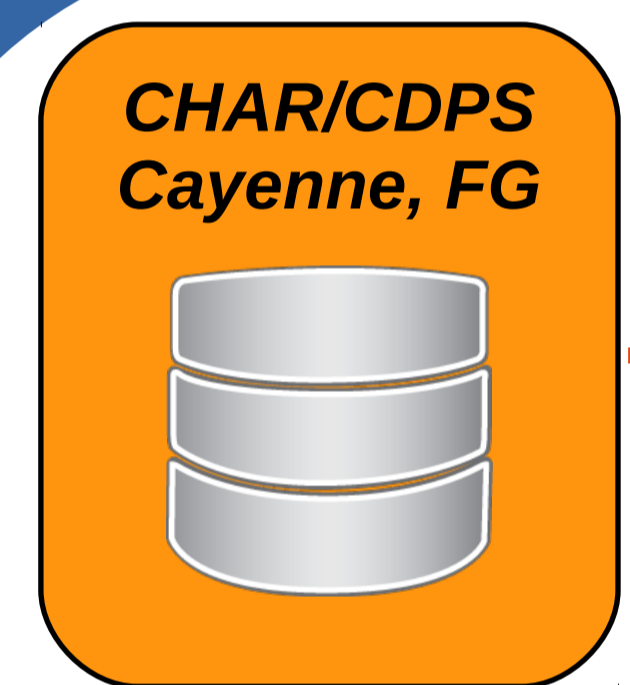


Objectives and challenges

- **Integrate and harmonize** automatically and regularly malaria cross-border epidemiological data
- **Disseminate** indicators and data in an interpretable way for specialists, health actors and population

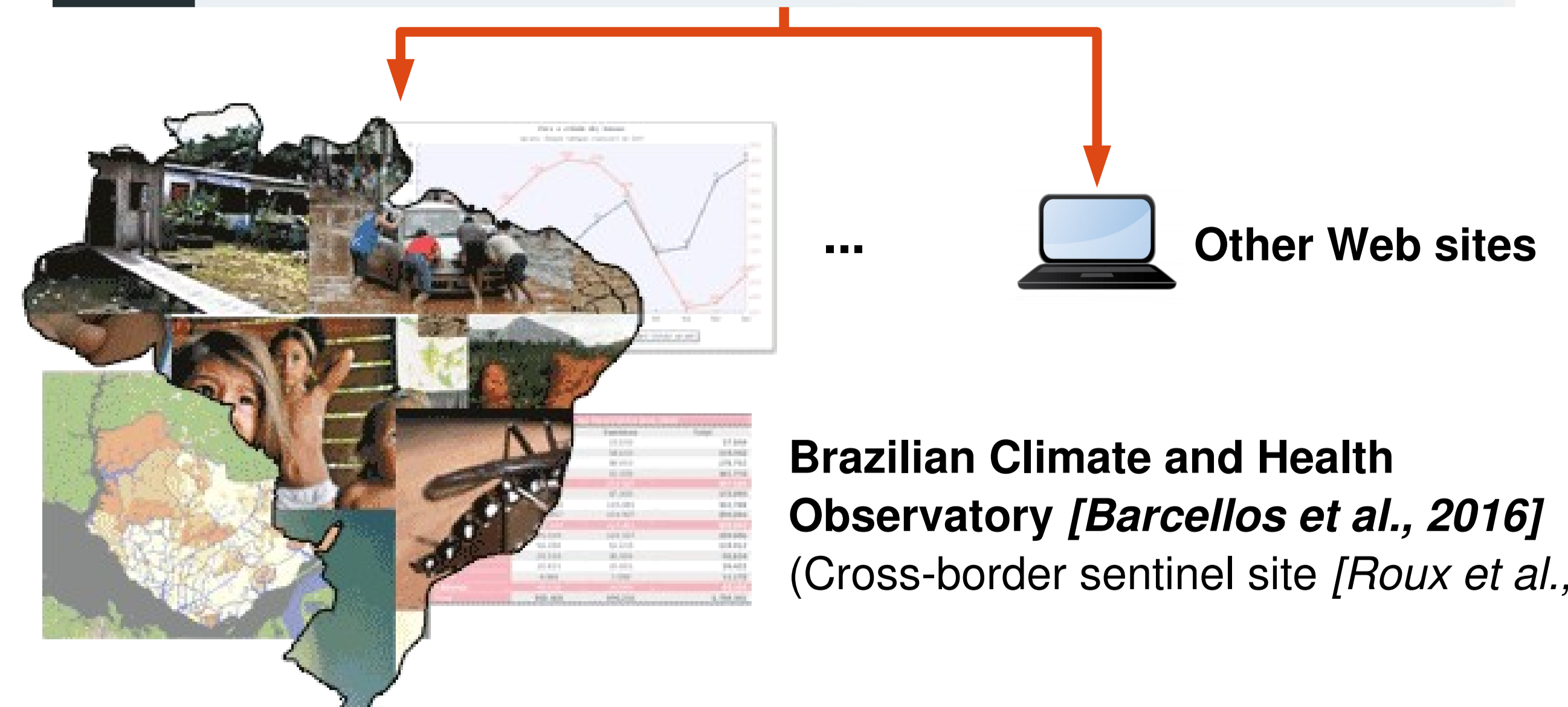
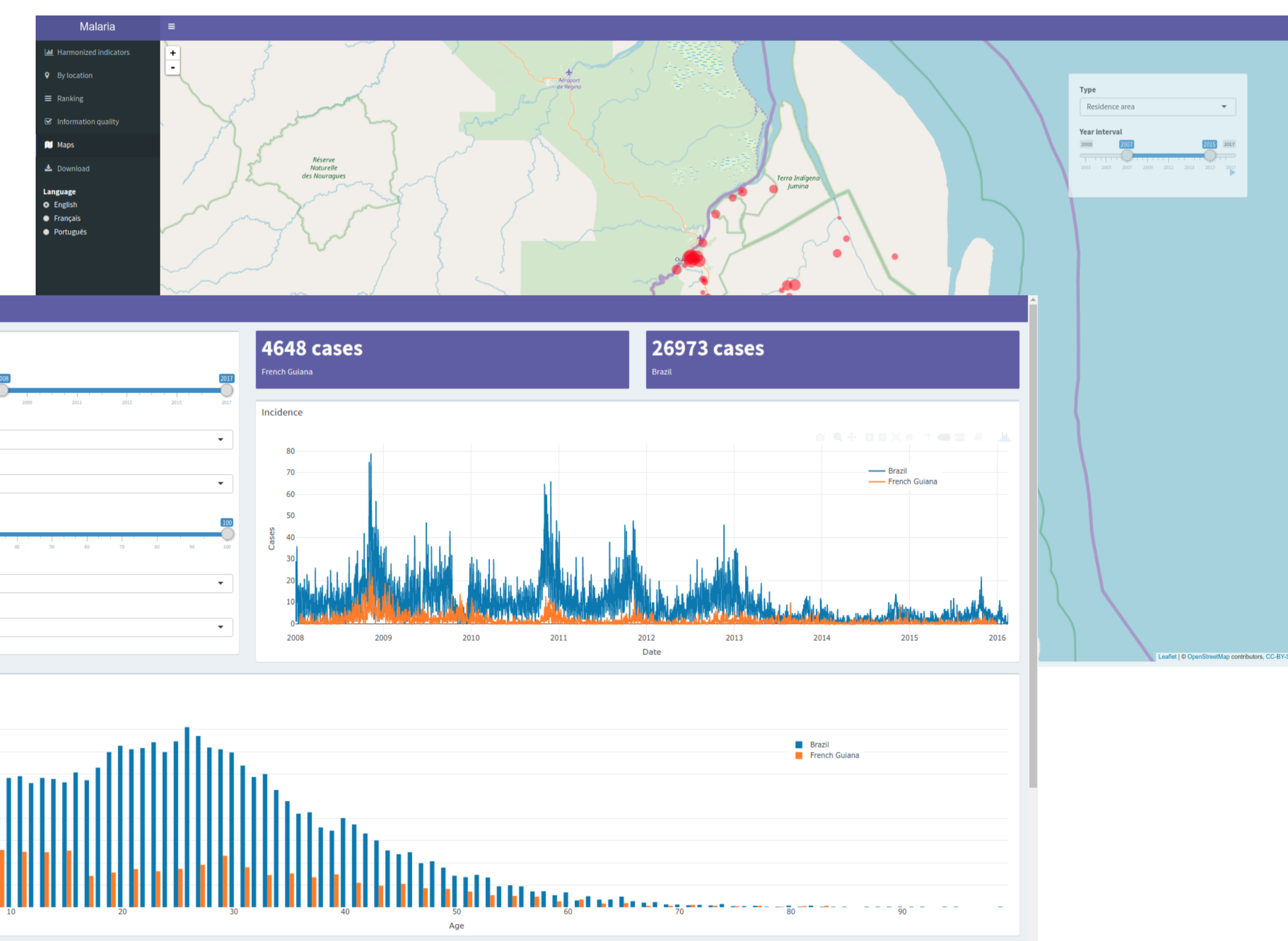
In fine, this should conduct to
• Provide a **unified vision of the epidemiological cross-border situations**
• Participate to define **concerted, targeted and effective control actions for disease elimination**

Data flow



Technological choices

- Multi-platform **Extract Transform Load (ETL)** tools (TALEND®)
- **Harmonization rules** based on expert knowledge in epidemiology and parasitology
- **Web services** for data online publication
- **Web application (R-Shiny)** for online data visualization



Ethical considerations

- Exploitation and dissemination of anonymized data
- Temporal and spatial aggregation of the data for public user profile
- Authorization of the *Commission Nationale de l'Informatique et des Libertés* (CNIL) for personal data automatic processing and data transmission to a foreign country (ongoing request No. 2135463)

Funding



Wangdi K. et al. Cross-border malaria: A major obstacle for malaria elimination. Adv. Parasitol. 2015, 89, 79–107
Barcellos C. et al. An observatory to gather and disseminate information on the health-related effects of environmental and climate change. Pan American Journal of Public Health. 2016, 40(3): 167-73
Roux E. et al. Un "site sentinelle" à la frontière franco-brésilienne pour comprendre et suivre les relations entre climat et santé. In Proceedings of the ENVIBRAS (Environnement et géomatique – approches comparées France Brésil) conference. Rennes: 2014:1–8