



**HAL**  
open science

## Spatial and temporal variation of tritium concentrations during a dam flushing operation

Lepage Hugo, Frédérique Eyrolle, Loic Ducros, David Claval

### ► To cite this version:

Lepage Hugo, Frédérique Eyrolle, Loic Ducros, David Claval. Spatial and temporal variation of tritium concentrations during a dam flushing operation. *Journal of Environmental Radioactivity*, 2020, 218, pp.106261. 10.1016/j.jenvrad.2020.106261 . hal-02531823

**HAL Id: hal-02531823**

**<https://hal.science/hal-02531823>**

Submitted on 7 Jul 2020

**HAL** is a multi-disciplinary open access archive for the deposit and dissemination of scientific research documents, whether they are published or not. The documents may come from teaching and research institutions in France or abroad, or from public or private research centers.

L'archive ouverte pluridisciplinaire **HAL**, est destinée au dépôt et à la diffusion de documents scientifiques de niveau recherche, publiés ou non, émanant des établissements d'enseignement et de recherche français ou étrangers, des laboratoires publics ou privés.



Distributed under a Creative Commons Attribution - NonCommercial - NoDerivatives 4.0 International License

## Manuscript Details

<b>Manuscript number</b>	JENVRAD_2020_65_R1
<b>Title</b>	Spatial and temporal variation of tritium concentrations during a dam flushing operation
<b>Article type</b>	Research Paper

### Abstract

Tritium is a radionuclide commonly observed worldwide in riverine systems. In the Rhône River downstream the Lake Geneva (Switzerland and France), its occurrence is also related to its use for its luminescent properties in watchmaking paints. In fact, tritium is regularly observed at anomalous levels in this river and extreme events such as flushing operations might conduct to its transport downstream. In the Rhône River, characterized by 21 dams downstream the Geneva Lake, such operations are regularly organized to remove the sediments and limit problematic consequences such as siltation and increased flooding hazards. The consequences of dam flushing operations on tritium concentrations were thus investigated. Samples of Suspended Particulate Matter (SPM) and water were collected in the Rhone River downstream of Geneva in June 2012, during a planned flushing operation of three upstream reservoirs (Verbois, Chancy-Pougny and Génissiat). The concentrations of tritiated water (HTO) and organically bound Tritium (OBT) were measured and compared to reference concentrations. The flushing operations had no impact on the HTO concentration while the increases observed were related to the authorized releases of HTO from a nuclear power plant located downstream the dams. High increases of OBT concentrations in SPM were observed at two stations (Creys-Malville and Jons) without clear spatial or temporal trends. These anomalous peaks could be explained by the heterogeneous spatial distribution of technogenic tritium leading to large variations of tritium concentrations within the samples even though collected in areas close to each other. The results highlight the need to investigate the amount of such technogenic tritium currently stored in the upstream Rhone River as it might be significant.

<b>Keywords</b>	Radionuclide; Technogenic tritium; organically bound Tritium; sediment; suspended particulate matter; watchmaking paint
<b>Taxonomy</b>	River Basin Management, Environmental Science, Environmental Radioactivity
<b>Corresponding Author</b>	Hugo LEPAGE
<b>Corresponding Author's Institution</b>	IRSN
<b>Order of Authors</b>	Hugo LEPAGE, Frédérique Eyrolle, Loïc Ducros, David CLAVAL
<b>Suggested reviewers</b>	Shinji Ueda, C. Le Gal La Salle, Sang Bog Kim
<b>Opposed reviewers</b>	Philippe pjb@lsce.ipsl.fr

## Submission Files Included in this PDF

### File Name [File Type]

Response to Reviewers .docx [Response to Reviewers (without Author Details)]

Manuscript\_Revised\_with\_marks.docx [Revised Manuscript with Changes Marked (without Author Details)]

Highlights.docx [Highlights]

Abstract\_revised.docx [Abstract]

Graphical Abstract\_revised.pdf [Graphical Abstract]

Title page.docx [Title Page (with Author Details)]

Manuscript\_Revised.docx [Manuscript (without Author Details)]

Figure captions\_revised.docx [Figure]

Figure 1.pdf [Figure]

Figure 2\_revised.pdf [Figure]

Figure 3\_revised.pdf [Figure]

Table.docx [Table]

declaration-of-competing-interests.docx [Conflict of Interest]

ESM\_revised.docx [e-Component]

To view all the submission files, including those not included in the PDF, click on the manuscript title on your EVISE Homepage, then click 'Download zip file'.

Comments from reviewer	Answers from corresponding author	Correction in the manuscript
Reviewer 1	<p>Explanation for the use of SPM and sediment in the manuscript:</p> <ul style="list-style-type: none"> <li>• SPM is used to characterize the particles that are transported by the river. It is what we sampled to measure the OBT.</li> <li>• Sediment characterized the particles stored either in the studied dams or along the river.</li> </ul> <p>Sediment could be resuspended (for example during the flushing operations) and thereafter considered as SPM as well as SPM could be stored by sedimentation and considered as sediment.</p> <p>Since the reviewers 2 and 3 did not complain on that point, we did not changed the terminology of SPM and sediments.</p>	
- Line 12: Insert (SPM)	Added	Samples of Suspended Particulate Matter (SPM) and water were collected in the Rhone River downstream of Geneva in June 2012 [...]
- Line 18: High increase of OBT concentration from SPM or sediment? I am confused between sediment and SPM through whole manuscript. Is SPM a part of sediment?	<p>See first comment for SPM and sediment definition.</p> <p>Although the increase was observed in the SPM sampled at two of the four stations, it was directly related to the resuspension during the flushing operations of the sediments stored in the dams or in the river.</p>	High increases of OBT concentrations in SPM were observed at two stations (Creys-Malville and Jons) without clear spatial or temporal trends.

<p>- Line 36: “the nuclear sector is allowed to release low-activity liquid effluent into rivers”. Is it including SPM or OBT? If yes, insert a reference.</p>	<p>Nuclear industries release radionuclides as dissolved species only. No particles are released. However, dissolved species can fix to suspended solid particles transported by the river. Tritium is transferred in the environment predominantly as dissolved free HTO and is known to be a conservative radionuclide during water mass transfer and mixing. Part of tritium can associate to particulate organic matter during photosynthesis (OBT).</p>	
<p>- Line 40: These forms?</p>	<p>OBT – corrected in the text</p>	<p>Part of OBT do not easily exchange with the surrounding water molecules and persist in the environment until organic compounds are biodegraded.</p>
<p>- Line 56: <math>0.6 \times 10^9</math>. Is it suspended or precipitated in the bottom?</p>	<p>It is particles that were suspended but got stored by sedimentation.</p>	
<p>- Line 61-62: What is a difference between contaminated sediments and SPM?</p>	<p>See first comment for SPM and sediment definition.  Sediments stored in the dam might be either contaminated or depleted so as the SPM.</p>	
<p>- Line 71: soil washout by rain?</p>	<p>Soil erosion. Corrected</p>	<p>[...] or finally progressively transferred due to soil erosion (Schürch et al., 2003).</p>
<p>- Line 99-110: Format error? All stations (A,B,C,D) have different sampling periods from 6 days to 30 days. Do you have any specific reason?</p>	<p>Unfortunately, due to logistic constraint, periods of sampling differed depending on the stations. Sampling at station A and B needed specific authorization due to safety rules during the flushing operations and sampling were only authorized during the flushing of the closest dams. Detail added to the manuscript.</p>	<p>To characterize the impact of the dam flushing operations on the concentrations of HTO (water samples) and OBT (SPM samples), samples were collected at four stations (Figure 1, Table 1) with different sampling periods due to logistic constrain</p>

<p>- Line 118: For SPM sampling, is any water depth related to?</p>	<p>At Station A B and D, Particle Trap were set in the bottom of the river while for Station C, the sampling were conducted approx. 50cm below the surface in order to side step potential heterogeneity of SPM throughout the river cross-section. Detail added to the manuscript.</p>	<p>Due to logistic constrain, the PT were set on the bottom of the river at Stations A, B and D while at Station C it was approx. 50 cm below the surface.</p>
<p>- Line 132: detection limit of HTO and OBT?</p>	<p>With used detection limit and detection threshold to determine the concentration in our samples as described in Currie (1968). For both methods, detection limit was approx. 0.6 Bq.L<sup>-1</sup> with a detection threshold of approx. 1.2 Bq.L<sup>-1</sup>. Information added in the manuscript.</p>	<p>For both methods, detection limit was approx. 0.6 Bq.L<sup>-1</sup> with a detection threshold of approx. 1.2 Bq.L<sup>-1</sup> (Currie, 1968; Eyrolle et al., 2018).</p>
<p>- Line 182: How much tritium released annually from the NPP?</p>	<p>In the Rhône River, almost 80% of HTO come from the NPP, it is the most released radionuclide in term of quantity (Eyrolle-Boyer et al., 2015). In 2012, almost 210 TBq of HTO were released in the Rhône River (with 200 TBq only by NPP).</p>	
<p>- Line 224: What is the relationship between sediment and SPM?</p>	<p>Corrected, OBT is heterogeneously distributed in the sediments.</p>	<p>However, OBT is heterogeneously distributed in sediments of the Rhône River and large amounts of this radionuclide are still stored in the Upper Rhône sediments.</p>
<p>- Table S1: In C station, MDA is 1.2 or 1.5 but in D station, can be detected up to 0.6 Bq/L. Are they use the same technique?</p>	<p>The same technique was used, it depended not only on the detection limit but also on the detection threshold. See information on detection limit in the comment above.</p>	
<p>Reviewer 2</p>		

<p>1. In order to determine how turbid in the river water collected in this study, please indicate and explain the SPM amount (mg/L) of the river water.</p>	<p>The discharge of the river and its SPM concentration were investigated in a thesis in French (Launay, 2014), while the data are available online (Thollet et al., 2018). A specific focus on Jons was conducted in Lepage et al. (2020). These references and additional information were added in the manuscript and in the electronic supplementary materials.</p>	<p>Discharge varied from <math>129 \text{ m}^3 \text{ s}^{-1}</math> to <math>631 \text{ m}^3 \text{ s}^{-1}</math> in the vicinity of Chancy-Pougny during the flushing periods (Figure ESM1 in electronic supplementary materials). Discharge increased from upstream to downstream and reached maximal values (<math>1600 \text{ m}^3 \text{ s}^{-1}</math>) at Jons (Station D in Figure 1) on the 06/14, which correspond to discharges observed for biennial flood (Lepage et al., 2020). SPM concentration reached <math>16.6 \text{ g L}^{-1}</math> near Génissiat during its flushing and the highest SPM concentration was observed during the flushing of Verbois and Chancy-Pougny with <math>48.6 \text{ g L}^{-1}</math> observed at Chancy-Pougny (Figure ESM1 in electronic supplementary materials). The SPM concentrations decreased with distance and the maximum concentrations observed at Jons was <math>0.9 \text{ g L}^{-1}</math>. It has to be noted that floods occurred in two tributaries (Ain and Fier - Figure 1) with a limited impact on the transport of SPM (Launay, 2014; Lepage et al., 2020).</p>
<p>2. Can you estimate the tritium load into a downstream using the amount of sediment released during flushing operations of 3 dams and data of OBT concentration in SPM? You should describe the effect of tritium on the downstream caused by the dam flushing operation.</p>	<p>Fluxes of SPM related to these flushing operations were calculated in Lepage et al. (2020) and might be used to estimate the flux of OBT. However due to its heterogeneous distribution in the SPM it is difficult to evaluate an accurate load of OBT exported.</p>	
<p>3. Please add information such as organic matter quantity (TOC, TN, etc.) to clarify the composition in SPM.</p>	<p>The particulate organic carbon and grain size distribution were added in the Table S2 and in the manuscript (in Mat &amp; Met., Results and Discussion)</p>	

<p>4. By the way, are there an impact of high-concentration tritium SPM on ecosystems? Is there bioaccumulation through the food chain by SPM? If so, please describe in the "introduction", "discussion" or "conclusion".</p>	<p>To our knowledge, any investigation was conducted on the radiotoxicity of the technogenic tritium observed in the Rhône River. Additional information was added to the manuscript.</p>	<p>The radiotoxicity of free tritium (HTO) or organically bound tritium to naturally occurring organic compounds (OBT) are low comparing to most other natural or artificial radionuclides. Nevertheless, the specific radiotoxicity of organically bound tritium to synthetic organic particles are unknown to our knowledge as well as their transfer rates toward living organisms.</p>
<p>5. Precipitation information is needed to distinguish the effects of dam flushing and precipitation. Provide information about precipitation during the observation period and please write that the SPM in the river water is not affected by precipitation.</p>	<p>During the flushing operations, floods occurred in two upstream tributaries (Ain and Fier rivers), downstream Stations A and B (Figure 1). Their impacts remained low as the input of SPM by these tributaries was strongly lower than the flux from the flushing operations (Launay. 2014; Lepage et al., 2020).</p>	<p>It has to be noted that floods occurred in two tributaries (Ain and Fier – Figure 1) with a limited impact on the transport of SPM (Launay, 2014; Lepage et al., 2020).</p>
<p>1. Change from unit of "Bq.L-1" to "Bq L-1" in manuscript. No period required.</p>	<p>Corrected for the whole manuscript.</p>	
<p>2. Line 45: Change from "coastal rivers" to "mountainous rivers".</p>	<p>Corrected</p>	<p>[...] HTO concentrations in two small mountainous rivers were shown to be higher during flood events than in baseflow conditions (Ueda <i>et al.</i>, 2015) [...]</p>
<p>3. It is easier to understand if you insert tritium concentration ranges in the river water and sediments of the Rhone River in Figures 2 and 3. For example, see Fig. 3 of Science of the Total Environment Eyrolle et al (2018) Vol 643, pp40-51.</p>	<p>Ranges of HTO and OBT concentrations were added to the figures 2 and 3.</p>	
<p>Reviewer 3</p>		
<p>- The graphical abstract looks inconsistent with the findings. Heterogeneous distribution of OBT is the key finding in my understanding. If so, the</p>	<p>Graphical abstract was improved</p>	



<p>heterogeneity should be illustrated in the graphical abstract.</p>		
<p>- More information is needed for heterogeneity for OBT. I remember that the author(s) don't have the data for the bed sediment, but how about the concentration of SPM (kg/L) in river water? That information helps the division of heterogeneity of SPM concentration and heterogeneity of OBT concentration (probably the unit should be Bq/kg instead of Bq/L in this case). I'm not familiar with the Rhone river but imagine heterogeneity of SPM concentration is large during such dam flushing operations.</p>	<p>Variation of discharge and SPM concentration were added in the electronic supplementary materials and in the manuscript. However, it is difficult to link the OBT to the SPM as the samples were collected during several hours in order to get a sufficient amount of SPM to realize the analysis.</p> <p>The Bq L<sup>-1</sup> of combustive water as described in our paper directly express the content of tritium associated with organic compounds. Bq kg<sup>-1</sup> can conduct to erroneous interpretation of OBT results because it doesn't consider organic matter content in suspended or deposited sediment samples. However, results in Bq kg<sup>-1</sup> were added in the ESM in the Table ESM2</p>	<p>This result highlights that these tritiated particles most probably come from the sediment stored in the dams and flushed during the operations. It also confirms their heterogeneously distribution as such increase of OBT concentration was not observed in Stations A and B.</p>

# 1 Spatial and temporal variation of tritium concentrations during a 2 dam flushing operation

## 3 Abstract

4 Tritium is a radionuclide commonly observed worldwide in riverine systems. In the Rhône  
5 River downstream the Lake Geneva (Switzerland and France), its occurrence is also related to  
6 its use for its luminescent properties in watchmaking paints. In fact, tritium is regularly  
7 observed at anomalous levels in this river and extreme events such as flushing operations  
8 might conduct to its transport downstream. In the Rhône River, characterized by 21 dams  
9 downstream the Geneva Lake, such operations are regularly organized to remove the  
10 sediments and limit problematic consequences such as siltation and increased flooding  
11 hazards. The consequences of dam flushing operations on tritium concentrations were thus  
12 investigated. Samples of Suspended Particulate Matter (SPM) and water were collected in the  
13 Rhone River downstream of Geneva in June 2012, during a planned flushing operation of three  
14 upstream reservoirs (Verbois, Chancy-Pougny and Génissiat). The concentrations of tritiated  
15 water (HTO) and organically bound Tritium (OBT) were measured and compared to reference  
16 concentrations. The flushing operations had no impact on the HTO concentration while the  
17 increases observed were related to the authorized releases of HTO from a nuclear power plant  
18 located downstream the dams. High increases of OBT concentrations in SPM were observed  
19 at two stations (Creys-Malville and Jons) without clear spatial or temporal trends. These  
20 anomalous peaks could be explained by the heterogeneous spatial distribution of technogenic  
21 tritium leading to large variations of tritium concentrations within the samples even though  
22 collected in areas close to each other. The results highlight the need to investigate the amount

23 of such technogenic tritium currently stored in the upstream Rhone River as it might be  
24 significant.

## 25 **Keywords**

26 Radionuclide; Technogenic tritium; organically bound Tritium; sediment; suspended  
27 particulate matter; watchmaking paint

## 28 **Introduction**

29 Tritium ( $^3\text{H}$  – half-life = 12.3 years) is a radionuclide commonly observed for several  
30 decades in the environment (Eisenbud et al., 1979). In rivers,  $^3\text{H}$  can be liquid (tritiated water  
31 - HTO) or incorporated in particulate organic compounds (Organically Bound Tritium - OBT)  
32 (Kim et al., 2013). The HTO is the predominant form of tritium in the environment and it closely  
33 follows the water cycle (Ciffroy et al., 2006; Eyrolle-Boyer et al., 2015). It is commonly used as  
34 a tracer in hydrogeology and marine studies (Ducros *et al.*, 2018). The HTO is also the most  
35 released aqueous radionuclide from nuclear facilities, with levels of activity currently 1000  
36 times higher than the sum of artificial gamma emitters discharged (Eyrolle *et al.*, 2018). In fact,  
37 in compliance with the legislation, the nuclear sector is allowed to release low-activity liquid  
38 effluent into rivers. The OBT is part of the organic matter cycle and has been measured in  
39 sediments and suspended particulate matter (SPM) for decades (Eyrolle *et al.*, 2018). Some of  
40 ~~these forms~~the OBT do not easily exchange with the surrounding water molecules and persist  
41 in the environment until organic compounds are biodegraded. These forms of tritium are  
42 expected to be stored in sediments associated with particulate organic matter (Eyrolle-Boyer  
43 *et al.*, 2014) and might be affected by extreme events such as flood events or dam flushing  
44 operations. In fact, these events strongly affect the behavior of dissolved and particulate  
45 contaminants including tritium. For example, after the deposition of tritium following the

46 Fukushima accident in march 2011, HTO concentrations in two small ~~coastal~~ mountainous  
47 rivers were shown to be higher during flood events than in baseflow conditions (Ueda *et al.*,  
48 2015) but decreased rapidly the following years to reach background concentration in 2014.  
49 Dams on rivers considerably impact SPM transport, by reducing flow velocity and increasing  
50 SPM deposition (Syvitski *et al.*, 2005) and that of their related contaminants (Lepage *et al.*,  
51 2020). Contaminants associated with deposited sediments may also be resuspended and  
52 disseminated (Peter *et al.*, 2014) or transferred to the dissolved phase (Bretier *et al.*, 2019;  
53 Kalnejais *et al.*, 2010).

54 In France, the Rhône River is characterized by the presence of 21 hydropower plants  
55 and is one of the most nuclearized rivers in the world, with 5 nuclear power plants (NPP)  
56 including one in dismantlement, nuclear fuel production, reprocessing plants and research  
57 laboratories. From 0.2 to 0.6 10<sup>9</sup> kg of SPM are stored each year along the Rhône River  
58 (Bravard and Clémens, 2008), mostly in dam reservoirs (Provansal *et al.*, 2014). Resuspension  
59 processes, such as dam flushing operations, are regularly organized to remove stored  
60 sediments and limit problematic consequences such as siltation and increased flooding  
61 hazards (Brown, 1944; Peteuil *et al.*, 2013). Such dam operations lead either to the  
62 resuspension of contaminated sediments stored in the dams, or to the dilution of  
63 contaminated SPM by flushing non-contaminated sediments (Lepage *et al.*, 2020).

64 Moreover, in the past century, most of the OBT was originate from other industrial  
65 plants present in the Rhône River and especially in its upstream part that produced  
66 luminescent paint used in watches (Eyrolle *et al.*, 2018; Jean-Baptiste *et al.*, 2018). These  
67 companies have released fine particles of tritiated compounds (usually tiny tritiated  
68 polystyrene spherules a few tens of microns in diameter) used in luminous paints (Jean-  
69 Baptiste *et al.*, 2007; Krejci and Zeller, 1979; Schürch *et al.*, 2003). In fact, these tritiated

70 technogenic particles (hot tritiated particles) could have been released directly into the river  
71 by the industrial plants, or transferred into the environment during the waste incineration  
72 process, or finally progressively transferred due to soil ~~washout~~erosion (Schürch et al., 2003).  
73 These refractory particles that accumulate in sediments are expected to persist in the  
74 environment for a very long time (Eyrolle et al., 2018; Morereau et al., in prep.) and have also  
75 been observed in the Mediterranean Sea near the outlet of the Rhône River (Jean-Baptiste *et*  
76 *al.*, 2018). Although a recent review written by Eyrolle *et al.* (2018) summarized results on its  
77 specific behavior in the Rhône River, reports on the impact of hydrological events on OBT  
78 concentrations remain rare especially its dynamics during dam flushing operations.

79 This field study was conducted in the Rhône River downstream the Lake Geneva during  
80 the flushing operations of several dams in June 2012. Water and SPM samples were collected  
81 at different locations for different periods. The tritium concentrations were characterized and  
82 the results were then compared with the contents recorded before the event.

## 83 **Materials and Method**

### 84 ***Dam location and description of the flushing operations***

85 This study was conducted along the Upper Rhône River in France and Switzerland,  
86 downstream the Lake Geneva (Figure 1). This basin (95,600 km<sup>2</sup> at Beaucaire station)  
87 constitutes the main SPM input flowing into the Western Mediterranean Sea with a mean SPM  
88 flux of 6.5 Mt<sub>year</sub><sup>-1</sup> from 2000 to 2015 (Poulier *et al.*, 2019). This work focuses on flushing  
89 operations conducted in June 2012 in three reservoirs located downstream of Lake Geneva in  
90 Switzerland (Figure 1): Verbois, Chancy-Pougny, and Génissiat. These flushing operations are  
91 described in Lepage *et al.* (2020). In brief, the water level of the three dams was lowered  
92 following the drawdown flushing method (Fruchard and Camenen, 2012) in order to remove

93 stored sediments. The large-volume Génissiat reservoir located downstream of the two other  
94 dams was flushed first (4-12 June 2012) in order to compensate for the deposition of the SPM  
95 released from the Chancy-Pougny (9-16 June 2012) and Verbois dams (9-22 June 2012).  
96 Discharge varied from 129 m<sup>3</sup> s<sup>-1</sup> to 631 m<sup>3</sup> s<sup>-1</sup> in the vicinity of Chancy-Pougny during the  
97 flushing periods (Figure ESM1 in electronic supplementary materials). Discharge increased  
98 from upstream to downstream and reached maximal values (1600 m<sup>3</sup> s<sup>-1</sup>) at Jons (Station D in  
99 Figure 1) on the 06/14, which correspond to discharges observed for biennial flood (Lepage et  
100 al., 2020). SPM concentration reached 16.6 g L<sup>-1</sup> near Génissiat during its flushing and the  
101 highest SPM concentration was observed during the flushing of Verbois and Chancy-Pougny  
102 with 48.6 g L<sup>-1</sup> observed at Chancy-Pougny (Figure ESM1 in electronic supplementary  
103 materials). The SPM concentrations decreased with distance and the maximum  
104 concentrations observed at Jons was 0.9 g L<sup>-1</sup>. It has to be noted that floods occurred in two  
105 tributaries (Ain and Fier - Figure 1) with a limited impact on the transport of SPM (Launay,  
106 2014; Lepage et al., 2020).

### 107 ***Sampling and samples***

108 To characterize the impact of the dam flushing operations on the concentrations of  
109 HTO (water samples) and OBT (SPM samples), samples were collected at four stations (Figure  
110 1, Table 1) with different sampling periods due to logistic constrain:

- 111 • Station A at Pougny, in the downstream vicinity of Chancy-Pougny and Verbois  
112 dams. Samples were collected from the 06/09/2012 to the 06/20/2012 during  
113 the flushing operations of these two dams.
- 114 • Station B at Seyssel, downstream Génissiat dam and during its flushing  
115 operation with samples collected from the 06/04/2012 to the 06/10/2012.

- 116                   • Station C at Creys-Malville in a monitoring station used to supply the regulatory  
117                   control of the releases from NPPs (IRSN, 2015) and used in this study for  
118                   temporal comparison. Sampling was conducted before, during and after the  
119                   flushing operations, from the 05/25/2012 to the 07/01/2012.
- 120                   • Station D at Jons in a monitoring station (Masson *et al.*, 2018; Thollet *et al.*,  
121                   2018) located downstream a NPP (Figure 1) with samples collected for the main  
122                   period of flushing operations, from the 06/04/2012 to the 07/03/2012.

123

124                   Two different sampling methods were used to collect water samples (Table 1).  
125                   Instantaneous water samples were obtained manually using a stainless-steel bucket (approx.  
126                   4 L) at stations A, B and D, and by an Automatic Water Sampler (AWS) at station C. The AWS  
127                   used for water sampling was a Bühler 4011 (HachLange, Germany) and set to collect 10 mL  
128                   every 65 minutes to constitute time integrated raw water samples (6 days) stored in glass  
129                   bottles. Samples were all stored in dark glass bottles at 4°C until analyses.

130                   For OBT measurement, SPM samples were collected using Particle Trap (PT). These  
131                   samplers were built following the German Environmental Specimen Bank model (Masson *et*  
132                   *al.*, 2018; Schulze *et al.*, 2007). Water flows through the high-quality stainless steel box and its  
133                   velocity is reduced by two baffles. SPM settle in two sedimentation basins in the box. Samples  
134                   were collected every 1 to 4 days (see Table ESMS1 in electronic supplementary materials).  
135                   Due to logistic constrain, the PT were set on the bottom of the river at Stations A, B and D  
136                   while at Station C it was approx. 50 cm below the surface. Prior to analysis, SPM samples were  
137                   stored in the dark at 4°C, deep-frozen, freeze-dried, and homogenized through a 2 mm  
138                   stainless steel sieve. Dried samples were then immediately sealed under soft vacuum in

139 aluminized bags until analyses in order to avoid the exchange of water molecules with the  
140 atmosphere.

### 141 **Grain-size distribution**

142 For the measure of volumetric grain size distribution, a representative aliquot of each  
143 wet sample was taken before processing and was analyzed on a CILAS 1190 laser particle size  
144 analyzer (Masson et al., 2018) according to the ISO 13320 standard method (AFNOR, 2009).  
145 Clay (<1.95 µm), Silt (<63 µm) and Sand (<2000 µm) were estimated.

### 146 **Particulate Organic Carbon analysis**

147 The determination of Particulate Organic Carbon (POC) in SPM samples was performed  
148 using a carbon analyzer (Thermo Electron, CHN Flash 2000) by INRA laboratory (Arras, France).  
149 Decarbonation was completed using hydrochloric acid according to the NF ISO 10694 standard  
150 method (AFNOR, 1995). The limit of quantification (LQ) was estimated to be 0.05 g kg<sup>-1</sup> and  
151 analytical uncertainty varied between ~3% and ~6% (k=2), depending on the POC  
152 concentration.

153

### 154 ***Tritium analyses***

155 The concentrations of the two main forms of tritium (HTO and OBT) were investigated.  
156 The HTO analyses were performed on 20ml of filtered water (< 0.2 µm) either directly filtered  
157 in the field for punctual samples or in the laboratory for time-integrated ones sampled by  
158 AWS. Filtered waters were analyzed by classical scintillation counting for HTO content (Tricarb  
159 3180 TR/SL), by taking an aliquot of 10 mL and adding 10 mL of scintillation liquid (UltimaGold  
160 LLT).



161 OBT analyses were conducted using the Helium-3 ingrowth method after placing the  
162 sample in a vacuum ( $10^{-6}$  mbar) and storing it for 3 to 4 months (Cossonnet *et al.*, 2009). The  
163 Helium-3 is a decay product of tritium—and its concentration is measured by mass  
164 spectrometry (Jean-Baptiste *et al.*, 2010). OBT concentrations were converted in Becquerel  
165 per liter of combustion water ( $\text{Bq}\cdot\text{Bq}\cdot\text{L}^{-1}_{\text{cw}}$ ) by using the percentage of hydrogen measured in  
166 each sample by a CHNS elemental analyzer (Elementar, vario MICROcube).

167 For both methods, detection limit was around  $0.6\text{ Bq L}^{-1}$  with a detection threshold of  
168  $1.2\text{ Bq L}^{-1}$  (Currie, 1968; Eyrolle *et al.*, 2018). All the measured concentrations were corrected  
169 for radioactive decay to the sampling date.

## 170 **Results**

### 171 **Variation of HTO contents**

172 The concentrations of HTO measured during this study were similar at Stations A and  
173 B (Figure 2; Table [S4-ESM1](#)) with respectively a mean HTO concentration of  $1.1\text{ Bq}\cdot\text{Bq}\cdot\text{L}^{-1}$  (with  
174 standard deviation  $\text{sd} = 0.3\text{ Bq}\cdot\text{Bq}\cdot\text{L}^{-1}$ ) and  $1.2\text{ Bq}\cdot\text{Bq}\cdot\text{L}^{-1}$  ( $\text{sd} = 0.2\text{ Bq}\cdot\text{Bq}\cdot\text{L}^{-1}$ ). At station C, the  
175 only value observed above the detection limit ( $0.8 \pm 0.7\text{ Bq}\cdot\text{Bq}\cdot\text{L}^{-1}$ ) was not significantly  
176 different to the two upstream stations. The HTO concentration at this station remained very  
177 low as several values were lower than the detection limit. For these three stations, no  
178 significant variation of HTO contents were observed during the flushing operations. At station  
179 D, two significant increases were observed during the flushing operation the 06/05/2012 and  
180 the 06/16/2012 with respectively  $13.1 \pm 1.0\text{ Bq}\cdot\text{Bq}\cdot\text{L}^{-1}$  and  $11.8 \pm 1.0\text{ Bq}\cdot\text{Bq}\cdot\text{L}^{-1}$ . The other  
181 concentrations measured at station D were similar to the values observed at the other stations  
182 with  $1.1\text{ Bq}\cdot\text{Bq}\cdot\text{L}^{-1}$  ( $\text{sd} = 0.3\text{ Bq}\cdot\text{Bq}\cdot\text{L}^{-1}$ ).

### 183 **OBT**

184 During the period studied, OBT contents ranged from  $180 \pm 40 \text{ Bq}\cdot\text{Bq L}^{-1}_{\text{cw}}$  to  $11,700 \pm$   
185  $2,300 \text{ Bq}\cdot\text{Bq L}^{-1}_{\text{cw}}$  (Figure 3 - Table S3ESM2) with a mean value of  $1,640 \text{ Bq}\cdot\text{Bq L}^{-1}_{\text{cw}}$  (sd =  $2,600$   
186  $\text{Bq}\cdot\text{Bq L}^{-1}_{\text{cw}}$ ). The mean OBT concentration at stations A and B were similar with respectively  
187  $850 \text{ Bq}\cdot\text{Bq L}^{-1}_{\text{cw}}$  (sd =  $320 \text{ Bq}\cdot\text{Bq L}^{-1}_{\text{cw}}$ ) and  $890 \text{ Bq}\cdot\text{Bq L}^{-1}_{\text{cw}}$  (sd =  $330 \text{ Bq}\cdot\text{Bq L}^{-1}_{\text{cw}}$ ) while significant  
188 variations of OBT were observed at the two other stations. At station C, the first value  
189 measured was significantly higher than the other with  $11,700 \pm 2,300 \text{ Bq}\cdot\text{Bq L}^{-1}_{\text{cw}}$  observed the  
190 06/09/12, then decreased to reach similar level than the upstream stations A and B. At station  
191 D, a high concentration of OBT was observed 48h afterwards that of station C ( $6,670 \pm 340$   
192  $\text{Bq}\cdot\text{Bq L}^{-1}_{\text{cw}}$  the 06/11/12). The other values measured during dam flushing operations (mean  
193 =  $680$  sd  $400 \text{ Bq}\cdot\text{Bq L}^{-1}_{\text{cw}}$ ) were similar to those of station A and B.

194 Silt particles always constituted the major part of the SPM whatever the station with  
195 proportions ranging from 35.8 to 94.2% (Table ESM2). Sand particles were mostly observed at  
196 stations A and B, close to the studied dams. Those particles were rapidly stored in the Upper  
197 Rhône River as the proportion of sand were very low at Stations C and D. The POC  
198 concentration observed at Station A and C remained constant while some variations were  
199 observed at the two other stations (Table ESM2). Maximal concentration was observed at  
200 Station D with  $36.0 \pm 1.8 \text{ mg kg}^{-1}$ .

201

## 202 Discussion

203 Most of the HTO concentrations measured at the four stations were similar to those  
204 observed from 2003 to 2015 by the Swiss Federal office of public health (OFSP, 2015) in water  
205 samples collected near station A ( $1.03 \text{ Bq}\cdot\text{Bq L}^{-1}$  with sd =  $0.41 \text{ Bq}\cdot\text{Bq L}^{-1}$ ) and not affected by  
206 NPP releases. Furthermore, the concentrations remained in the range of values observed for

207 the natural background in waters of French pristine rivers (Ducros *et al.*, 2018). Although, the  
208 increases observed at station D was strictly related to the releases of HTO by the NPP and not  
209 related to the dam flushing operations. As mentioned in the introduction, NPPs are allowed  
210 to release radionuclides into river systems conforming to liquid flow rate thresholds. The  
211 sampling performed at station D for this study was conducted during short radionuclide  
212 release operations with 12 events from 3 to 12 hours (Electricité De France, personal  
213 communication). The absence of higher HTO concentrations in the other samples of station D  
214 was due to the time lapse between the NPP's release operations and the samplings,  
215 performed 10 hours after the end of the operations. The transit time between the NPP and  
216 the sampling station has been validated by modeling using the hydrological model CASTEAUR  
217 (Beaugelin-Seiller *et al.*, 2002). The increase was only observed at station D as the NPP is  
218 downstream the other stations (Figure 1). Overall, the values measured during this NPP's  
219 operations were similar to the mean concentrations recorded during radionuclide release  
220 operations at this NPP from 2011 to 2014 ( $12 \text{ Bq} \cdot \text{Bq} \cdot \text{L}^{-1}$ ) (IRSN, 2015). Therefore, despite the  
221 input of high quantity of water from the flushing operations and characterized by a lower level  
222 of HTO than from the NPP releases, no significant effect of dilution was observed. In the Upper  
223 Rhône River, dam flushing operations do not affect HTO concentrations in the water column  
224 and, in the absence of NPP releases, these concentrations remain similar from upstream to  
225 downstream. Thus, in contrast with certain trace metals remobilized during such events such  
226 as arsenic (Bretier *et al.*, 2019; Monnin *et al.*, 2018), no significant transfer of tritium from  
227 sediment remobilization to the dissolved phase was observed. Moreover, these results did not  
228 show any significant contribution of tritium either from HTO potentially stored in the pore  
229 waters of remobilized sediments, or from OBT associated to fine particles ( $<0.45 \mu\text{m}$ ) towards  
230 waters.

231 Despite the high concentrations of OBT observed at stations C and D, all the  
232 concentrations remained in the same range as those reported by Eyrolle *et al.*, (2018) (from  
233 4 to 30,200  $\text{Bq}\cdot\text{Bq L}^{-1}_{\text{cw}}$ ) and confirmed the high variability due to the presence of tritiated  
234 technogenic particles in the Rhône River. In fact, OBT concentrations are generally expected  
235 to be rather close to HTO concentrations in most other cases (Eyrolle-Boyer *et al.*, 2015). For  
236 example, in the sediments of the Rhône's tributaries not affected by luminous paints,  
237 background values were lower than 10  $\text{Bq}\cdot\text{Bq L}^{-1}_{\text{cw}}$  (Eyrolle *et al.*, 2018). Since neither  
238 significant temporal nor spatial trends were observed in OBT concentrations, we hypothesize  
239 that these results can be explained by the heterogeneous distribution of technogenic tritium  
240 in suspended or deposited sedimentary particles leading to large variations of tritium  
241 concentrations within the samples even though collected in areas close to each other. Also,  
242 this result is confirmed by the absence of relation between OBT and POC concentrations. In  
243 the Rhône River, OBT is not only bound to organic matter of natural origin, but would very  
244 likely be trapped inside fine polystyrene particles from technogenic tritium (Eyrolle *et al.*,  
245 2018). Regarding grain size, any specific relation was observed but the highest level of OBT at  
246 Jons (6670  $\text{Bq L}^{-1}_{\text{cw}}$ ) was observed in a sample characterized by a high level of sand (42.2%)  
247 (Table ESM2). This result highlights that these tritiated particles most probably come from the  
248 sediment stored in the dams and flushed during the operations. It also confirms their  
249 heterogeneously distribution as such increase of OBT concentration was not observed in  
250 Stations A and B. Furthermore, with the evolution of technologies and the introduction of  
251 guidelines for the protection of the environment (Morereau *et al.*, in prep.), OBT should no  
252 longer be emitted at this level in the environment and its occurrence should be mainly related  
253 to its long-time presence in the sediments of the Rhône River (Eyrolle *et al.*, 2018). The highest  
254 concentrations observed below the dams might be related to the resuspension of old

255 contaminated sediments stored in the studied dams as observed for PAHs by Lepage et al.  
256 (2020). The OBT is expected to be transported downstream and its concentration should  
257 decrease from upstream to downstream in the following decades.

258

## 259 **Conclusion**

260 The consequences of dam flushing operations on tritium concentrations were  
261 investigated in the Rhône River downstream Lake Geneva by characterizing ~~the~~ HTO and OBT  
262 concentrations respectively in filtered water and suspended particulate matter (SPM) samples  
263 collected downstream three dams flushed in June 2012. Our results demonstrate that dam  
264 flushing operations do not significantly affect tritium concentrations in the water column as  
265 they remained similar to those previously recorded during normal flow conditions. Analyses  
266 of OBT in the SPM demonstrated ~~transient~~ increases in concentration during ~~the~~ dam flushing  
267 operations. ~~This increase was~~ Those are most probably ~~linked~~ explained by the resuspension  
268 of fine tritiated particles from watchmaking activities. As the increases were transient and not  
269 observed at all the stations, no significant temporal nor spatial trend following dam flushing  
270 operations can be drawn clearly ~~trend could be linked to the dam flushing operations.~~  
271 However, OBT is heterogeneously distributed in sediments of the Rhône River and SPM ~~and a~~  
272 large amounts of OBT ~~this radionuclide are still~~ might be currently stored in the Upper Rhône  
273 River sediments. Extreme events and could be redistributed following extreme events such as  
274 dam flushing operations can redistribute these storages to the downstream part of the River.  
275 The radiotoxicity of free tritium (HTO) or organically bound tritium to naturally occurring  
276 organic compounds (OBT) are low comparing to most other natural or artificial radionuclides.  
277 Nevertheless, the specific radiotoxicity of organically bound tritium to synthetic organic  
278 particles are unknown to our knowledge as well as their transfer rates toward living organisms.

## 279 **Acknowledgements**

280 This study was supported by the Rhône Sediment Observatory (OSR), a multi-partner  
281 research program partly funded by the Rhône Plan and by the European Regional  
282 Development Fund (ERDF) allocated by the European Union. We thank the teams of OSR,  
283 especially those of INRAE and CEREGE, for their contribution in the field for water and  
284 sediment sampling. We are very grateful to CNR, DREAL ARA, SIG and EDF services for  
285 cooperating with OSR and sharing their monitoring data.

## 286 **References**

- 287 AFNOR, 2009. NF ISO 10694: Particle Size Analysis - Laser Diffraction Methods. 51 pp.
- 288 AFNOR, 1995. NF ISO 10694: Soil quality - Determination of organic and total carbon after dry  
289 combustion (elementary analysis). 7 pp.
- 290 Beaugelin-Seiller, K., Boyer, P., Garnier-Laplace, J., Adam, C., 2002. Casteaur: A simple tool to  
291 assess the transfer of radionuclides in waterways. *Health Phys.* 83, 539–542.  
292 <https://doi.org/10.1097/00004032-200210000-00013>
- 293 Bravard, J.-P., Clémens, A., 2008. Le Rhône en 100 questions. Méditerranée (report in French)  
294 295 pp.
- 295 Bretier, M., Dabrin, A., Bessueille-Barbier, F., Coquery, M., Barbier-Bessueille, F., Coquery, M.,  
296 2019. Comparison of integrative passive sampling and discrete monitoring to assess the  
297 impact of dam flushing event on dissolved trace elements concentrations. *Sci. Total*  
298 *Environ.* 656, 433–446. <https://doi.org/10.1016/j.scitotenv.2018.11.303>
- 299 Brown, C.B., 1944. The control of reservoir silting. US Gov. Print. Off. 521, 168 pp.
- 300 Ciffroy, P., Siclet, F., Damois, C., Luck, M., 2006. A dynamic model for assessing radiological  
301 consequences of tritium routinely released in rivers. Application to the Loire River. *J.*

302 Environ. Radioact. 90, 110–139. <https://doi.org/10.1016/j.jenvrad.2006.06.012>

303 Cossonnet, C., Neiva Marques, A.M., Gurriaran, R., 2009. Experience acquired on  
304 environmental sample combustion for organically bound tritium measurement. Appl.  
305 Radiat. Isot. 67, 809–811. <https://doi.org/10.1016/j.apradiso.2009.01.039>

306 Currie, L.A., 1968. Limits for Qualitative Detection and Quantitative Determination:  
307 Application to Radiochemistry. Anal. Chem. 40, 586–593.  
308 <https://doi.org/10.1021/ac60259a007>

309 Ducros, L., Eyrolle, F., Vedova, C. Della, Charmasson, S., Leblanc, M., Mayer, A., Babic, M.,  
310 Antonelli, C., Mourier, D., Giner, F., 2018. Tritium in river waters from French  
311 Mediterranean catchments: Background levels and variability. Sci. Total Environ. 612,  
312 672–682. <https://doi.org/10.1016/j.scitotenv.2017.08.026>

313 Eisenbud, M., Bennett, B., Blanco, R.E., 1979. Tritium in the environment. NCRP Report No.  
314 62. Behav. Tritium Environ.

315 Eyrolle-Boyer, F., Boyer, P., Claval, D., Charmasson, S., Cossonnet, C., 2014. Apparent  
316 enrichment of organically bound tritium in rivers explained by the heritage of our past. J.  
317 Environ. Radioact. 136, 162–168. <https://doi.org/10.1016/j.jenvrad.2014.05.019>

318 Eyrolle-Boyer, F., Claval, D., Cossonnet, C., Zebracki, M., Gairoard, S., Radakovitch, O., Calmon,  
319 P., Leclerc, E., 2015. Tritium and 14C background levels in pristine aquatic systems and  
320 their potential sources of variability. J. Environ. Radioact. 139, 24–32.  
321 <https://doi.org/10.1016/j.jenvrad.2014.09.015>

322 Eyrolle, F., Lepage, H., Copard, Y., Ducros, L., Claval, D., Saey, L., Cossonnet, C., Giner, F.,  
323 Mourier, D., 2018. A brief history of the origins and contents of Organically Bound Tritium  
324 (OBT) and 14C in the sediments of the Rhône watershed. Sci. Total Environ. in review,  
325 40–51. <https://doi.org/10.1016/j.scitotenv.2018.06.074>

326 Fruchard, F., Camenen, B., 2012. Reservoir sedimentation: different type of flushing-friendly  
327 flushing example of genissiat dam flushing. ICOLD Int. Symp. Dams a Chang. world 6 pp.

328 IRSN, 2015. Bilan de l'état radiologique de l'environnement français de juin 2011 à décembre  
329 2014. PRP-ENV (french report) 253p.

330 IRSN, 2013. Constat radiologique Vallée du Rhône. Rapport final relatif au milieu aquatique.  
331 PRP-ENV/SESURE (french report) 37, 68p.

332 Jean-Baptiste, P., Baumier, D., Fourré, E., Dapoigny, A., Clavel, B., 2007. The distribution of  
333 tritium in the terrestrial and aquatic environments of the Creys-Malville nuclear power  
334 plant (2002-2005). J. Environ. Radioact. 94, 107-118.  
335 <https://doi.org/10.1016/j.jenvrad.2007.01.010>

336 Jean-Baptiste, P., Fontugne, M., Fourré, E., Marang, L., Antonelli, C., Charmasson, S., Siclet, F.,  
337 2018. Tritium and radiocarbon levels in the Rhône river delta and along the French  
338 Mediterranean coastline. J. Environ. Radioact. 187, 53-64.  
339 <https://doi.org/10.1016/j.jenvrad.2018.01.031>

340 Kalnejais, L.H., Martin, W.R., Bothner, M.H., 2010. The release of dissolved nutrients and  
341 metals from coastal sediments due to resuspension. Mar. Chem. 121, 224-235.  
342 <https://doi.org/10.1016/j.marchem.2010.05.002>

343 Kim, S.B., Baglan, N., Davis, P.A., 2013. Current understanding of organically bound tritium  
344 (OBT) in the environment. J. Environ. Radioact. 126, 83-91.  
345 <https://doi.org/10.1016/j.jenvrad.2013.07.011>

346 Krejci, K., Zeller, J., 1979. Tritium pollution in the Swiss luminous compound industry, in:  
347 International Symposium on the Behaviour of Tritium in the Environment. IAEA, Vienna,  
348 pp. 65-77.

349 Launay, M., 2014. Flux de matières en suspension, de mercure et de PCB particulières dans le



350 Rhône, du Léman à la Méditerranée. Thesis (in French) 434.  
351 <https://doi.org/10.1002/oby.20222>

352 Lepage, H., Launay, M., Le Coz, J., Angot, H., Miège, C., Gairoard, S., Radakovitch, O., Coquery,  
353 M., 2020. Impact of dam flushing operations on sediment dynamics and quality in the  
354 upper Rhône River, France. *J. Environ. Manage.* 255, 109886.  
355 <https://doi.org/10.1016/j.jenvman.2019.109886>

356 Masson, M., Angot, H., Le Bescond, C., Launay, M., Dabrin, A., Miège, C., Le Coz, J., Coquery,  
357 M., 2018. Sampling of suspended particulate matter using particle traps in the Rhône  
358 River: Relevance and representativeness for the monitoring of contaminants. *Sci. Total*  
359 *Environ.* 637–638, 538–549. <https://doi.org/10.1016/j.scitotenv.2018.04.343>

360 Monnin, L., Ciffroy, P., Garnier, J.M., Ambrosi, J.P., Radakovitch, O., 2018. Remobilization of  
361 trace metals during laboratory resuspension of contaminated sediments from a dam  
362 reservoir. *J. Soils Sediments* 18, 2596–2613. [https://doi.org/10.1007/s11368-018-1931-](https://doi.org/10.1007/s11368-018-1931-5)  
363 5

364 Morereau, A., Lepage, H., Claval, D., Cossonnet, C., Radakovitch, O., Ambrosi, J.-P., Mourier,  
365 B., Eyrolle, F., n.d. Technogenic tritium contamination from watchmaking industry and its  
366 resiliency in river sediments of the Rhône River (France).

367 OFSP, 2015. Radenviro.ch [WWW Document]. URL <http://www.radenviro.ch/fr->  
368 [CH/measures/274](http://www.radenviro.ch/fr-CH/measures/274) (accessed 7.5.16).

369 Peter, D.H., Castella, E., Slaveykova, V.I., 2014. Effects of a reservoir flushing on trace metal  
370 partitioning, speciation and benthic invertebrates in the floodplain. *Environ. Sci. Process.*  
371 *Impacts* 16, 2692–2702. <https://doi.org/10.1039/c4em00387j>

372 Peteuil, C., Fruchart, F., Abadie, F., Reynaud, S., Camenen, B., Guertault, L., 2013. Sustainable  
373 management of sediment fluxes in reservoir by environmental friendly flushing : the case

374 study of the Genissiat dam on the upper Rhone River (France), in: 12th International  
375 Conference on River Sedimentation. Kyoto (Japan), pp. 1147–1156.

376 Poulhier, G., Launay, M., Le Bescond, C., Thollet, F., Coquery, M., 2019. Combining flux  
377 monitoring and estimation to establish annual budgets of suspended particulate matter  
378 and associated pollutants in the Rhône River from Lake Geneva to the Mediterranean  
379 Sea. *Sci. Total Environ.* 658, 457–473. <https://doi.org/10.1016/J.SCITOTENV.2018.12.075>

380 Provansal, M., Dufour, S., Sabatier, F., Anthony, E.J., Raccasi, G., Robresco, S., 2014. The  
381 geomorphic evolution and sediment balance of the lower Rhône River (southern France)  
382 over the last 130years: Hydropower dams versus other control factors. *Geomorphology*  
383 219, 27–41. <https://doi.org/10.1016/j.geomorph.2014.04.033>

384 Schulze, T., Ricking, M., Schröter-Kermani, C., Körner, A., Denner, H.-D., Weinfurtner, K.,  
385 Winkler, A., Pekdeger, A., 2007. The German Environmental Specimen Bank - Sampling,  
386 processing, and archiving sediment and suspended particulate matter. *J. Soils Sediments*  
387 7, 361–367. <https://doi.org/10.1065/jss2007.08.248>

388 Schürch, M., Kozel, R., Schotterer, U., Tripet, J.-P.P., Schürch, M., Kozel, R., Schotterer, U.,  
389 Tripet, J.-P.P., 2003. Observation of isotopes in the water cycle—the Swiss National  
390 Network (NISOT). *Environ. Geol.* 45, 1–11. <https://doi.org/10.1007/s00254-003-0843-9>

391 Syvitski, J.P.M., Vörösmarty, C.J., Kettner, A.J., Green, P., 2005. Impact of humans on the flux  
392 of terrestrial sediment to the global coastal ocean. *Science* (80-. ). 308, 376–380.  
393 <https://doi.org/10.1126/science.1109454>

394 Thollet, F., Le Bescond, C., Lagouy, M., Gruat, A., Grisot, G., Le Coz, J., Coquery, M., Lepage, H.,  
395 Gairoard, S., Gattacceca, J.C., Ambrosi, J.-P., Radakovitch, O., 2018. Observatoire des  
396 sédiments du Rhône. <https://doi.org/10.17180/OBS.OSR>

397 Ueda, S., Hasegawa, H., Kakiuchi, H., Ochiai, S., Akata, N., Hisamatsu, S., 2015. Nuclear

398 accident-derived  $^3\text{H}$  in river water of Fukushima Prefecture during 2011-2014. J. Environ.  
399 Radioact. 146, 102-109. <https://doi.org/10.1016/j.jenvrad.2015.04.014>  
400

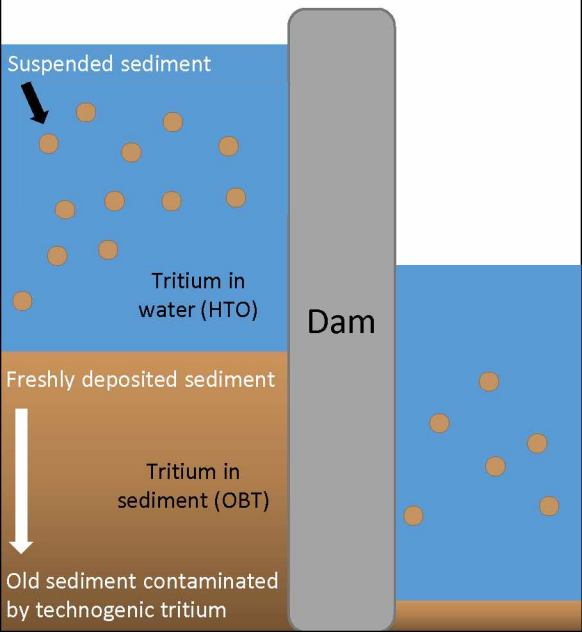
## Highlights

- Tritium were monitored during dam regulations in the Rhone River.
- Dam flushing operations had no impact on HTO concentration in water.
- Increase of HTO contents were only related to the releases from a nuclear plant.
- Flushing operations resuspended contaminated sediments by watches industries.
- Sporadic high OBT contents in SPM reflect its heterogeneous distribution.

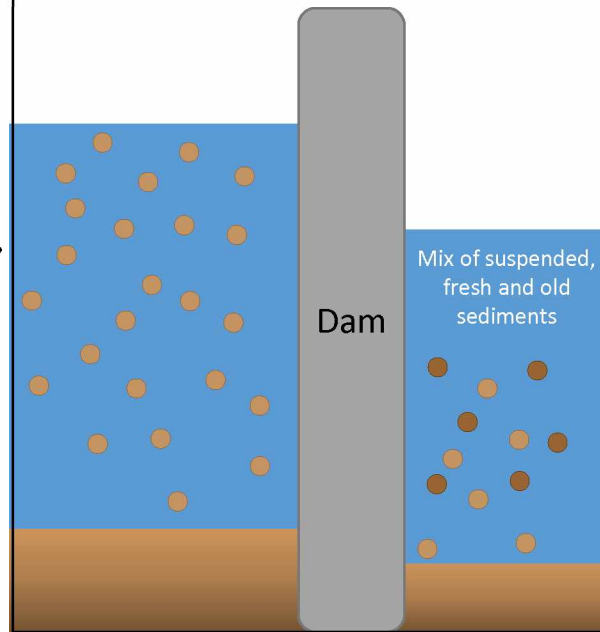
## **Abstract**

Tritium is a radionuclide commonly observed worldwide in riverine systems. In the Rhône River downstream the Lake Geneva (Switzerland and France), its occurrence is also related to its use for its luminescent properties in watchmaking paints. In fact, tritium is regularly observed at anomalous levels in this river and extreme events such as flushing operations might conduct to its transport downstream. In the Rhône River, characterized by 21 dams downstream the Geneva Lake, such operations are regularly organized to remove the sediments and limit problematic consequences such as siltation and increased flooding hazards. The consequences of dam flushing operations on tritium concentrations were thus investigated. Samples of Suspended Particulate Matter (SPM) and water were collected in the Rhone River downstream of Geneva in June 2012, during a planned flushing operation of three upstream reservoirs (Verbois, Chancy-Pougny and Génissiat). The concentrations of tritiated water (HTO) and organically bound Tritium (OBT) were measured and compared to reference concentrations. The flushing operations had no impact on the HTO concentration while the increases observed were related to the authorized releases of HTO from a nuclear power plant located downstream the dams. High increases of OBT concentrations in SPM were observed at two stations (Creys-Malville and Jons) without clear spatial or temporal trends. These anomalous peaks could be explained by the heterogeneous spatial distribution of technogenic tritium leading to large variations of tritium concentrations within the samples even though collected in areas close to each other. The results highlight the need to investigate the amount of such technogenic tritium currently stored in the upstream Rhone River as it might be significant.

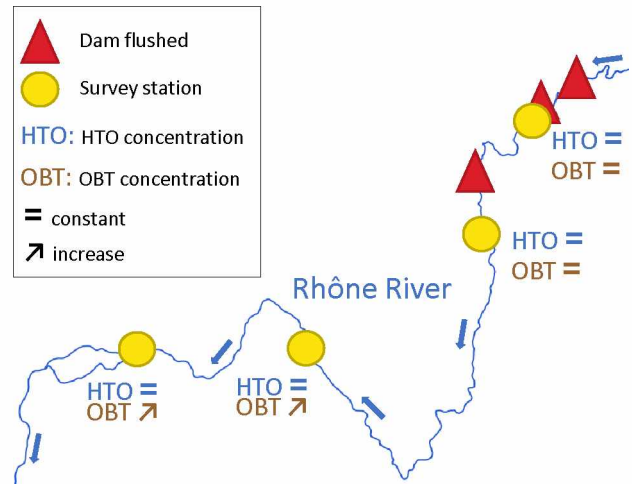
## Before dam flushing operation



## After dam flushing operation



## Spatial variation of tritium during the flushing operations



### Dam flushing operations:

- Had no impact on HTO concentration
- Confirmed the heterogeneous distribution of OBT

1 **Spatial and temporal variation of tritium concentrations during a**  
2 **dam flushing operation**

3 Lepage Hugo<sup>a\*</sup>, Eyrolle Frédérique<sup>a</sup>, Ducros Loïc<sup>b</sup>, Claval David<sup>a</sup>.

4

5 <sup>a</sup> Institut de Radioprotection et de Sûreté Nucléaire (IRSN), PSE-ENV, SRTE/LRTA,  
6 SEREN/LEREN, BP 3, 13115 Saint-Paul-lez-Durance, France

7

8 <sup>b</sup> Université de Nîmes, EA7352 CHROME, Laboratoire GIS, Parc scientifique et technique G.  
9 Besse, 150 rue Georges Besse, 30000 Nîmes, France

10

11 \*corresponding author

# 1 **Spatial and temporal variation of tritium concentrations during a** 2 **dam flushing operation**

## 3 **Abstract**

4 Tritium is a radionuclide commonly observed worldwide in riverine systems. In the Rhône  
5 River downstream the Lake Geneva (Switzerland and France), its occurrence is also related to  
6 its use for its luminescent properties in watchmaking paints. In fact, tritium is regularly  
7 observed at anomalous levels in this river and extreme events such as flushing operations  
8 might conduct to its transport downstream. In the Rhône River, characterized by 21 dams  
9 downstream the Geneva Lake, such operations are regularly organized to remove the  
10 sediments and limit problematic consequences such as siltation and increased flooding  
11 hazards. The consequences of dam flushing operations on tritium concentrations were thus  
12 investigated. Samples of Suspended Particulate Matter (SPM) and water were collected in the  
13 Rhone River downstream of Geneva in June 2012, during a planned flushing operation of three  
14 upstream reservoirs (Verbois, Chancy-Pougny and Génissiat). The concentrations of tritiated  
15 water (HTO) and organically bound Tritium (OBT) were measured and compared to reference  
16 concentrations. The flushing operations had no impact on the HTO concentration while the  
17 increases observed were related to the authorized releases of HTO from a nuclear power plant  
18 located downstream the dams. High increases of OBT concentrations in SPM were observed  
19 at two stations (Creys-Malville and Jons) without clear spatial or temporal trends. These  
20 anomalous peaks could be explained by the heterogeneous spatial distribution of technogenic  
21 tritium leading to large variations of tritium concentrations within the samples even though  
22 collected in areas close to each other. The results highlight the need to investigate the amount



23 of such technogenic tritium currently stored in the upstream Rhone River as it might be  
24 significant.

## 25 **Keywords**

26 Radionuclide; Technogenic tritium; organically bound Tritium; sediment; suspended  
27 particulate matter; watchmaking paint

## 28 **Introduction**

29 Tritium ( $^3\text{H}$  - half-life = 12.3 years) is a radionuclide commonly observed for several  
30 decades in the environment (Eisenbud et al., 1979). In rivers,  $^3\text{H}$  can be liquid (tritiated water  
31 - HTO) or incorporated in particulate organic compounds (Organically Bound Tritium - OBT)  
32 (Kim et al., 2013). The HTO is the predominant form of tritium in the environment and it closely  
33 follows the water cycle (Ciffroy et al., 2006; Eyrolle-Boyer et al., 2015). It is commonly used as  
34 a tracer in hydrogeology and marine studies (Ducros *et al.*, 2018). The HTO is also the most  
35 released aqueous radionuclide from nuclear facilities, with levels of activity currently 1000  
36 times higher than the sum of artificial gamma emitters discharged (Eyrolle *et al.*, 2018). In fact,  
37 in compliance with the legislation, the nuclear sector is allowed to release low-activity liquid  
38 effluent into rivers. The OBT is part of the organic matter cycle and has been measured in  
39 sediments and suspended particulate matter (SPM) for decades (Eyrolle *et al.*, 2018). Some of  
40 the OBT do not easily exchange with the surrounding water molecules and persist in the  
41 environment until organic compounds are biodegraded. These forms of tritium are expected  
42 to be stored in sediments associated with particulate organic matter (Eyrolle-Boyer *et al.*,  
43 2014) and might be affected by extreme events such as flood events or dam flushing  
44 operations. In fact, these events strongly affect the behavior of dissolved and particulate  
45 contaminants including tritium. For example, after the deposition of tritium following the

46 Fukushima accident in march 2011, HTO concentrations in two small mountainous rivers were  
47 shown to be higher during flood events than in baseflow conditions (Ueda *et al.*, 2015) but  
48 decreased rapidly the following years to reach background concentration in 2014. Dams on  
49 rivers considerably impact SPM transport, by reducing flow velocity and increasing SPM  
50 deposition (Syvitski *et al.*, 2005) and that of their related contaminants (Lepage *et al.*, 2020).  
51 Contaminants associated with deposited sediments may also be resuspended and  
52 disseminated (Peter *et al.*, 2014) or transferred to the dissolved phase (Bretier *et al.*, 2019;  
53 Kalnejais *et al.*, 2010).

54 In France, the Rhône River is characterized by the presence of 21 hydropower plants  
55 and is one of the most nuclearized rivers in the world, with 5 nuclear power plants (NPP)  
56 including one in dismantlement, nuclear fuel production, reprocessing plants and research  
57 laboratories. From 0.2 to 0.6 10<sup>9</sup> kg of SPM are stored each year along the Rhône River  
58 (Bravard and Clémens, 2008), mostly in dam reservoirs (Provansal *et al.*, 2014). Resuspension  
59 processes, such as dam flushing operations, are regularly organized to remove stored  
60 sediments and limit problematic consequences such as siltation and increased flooding  
61 hazards (Brown, 1944; Peteuil *et al.*, 2013). Such dam operations lead either to the  
62 resuspension of contaminated sediments stored in the dams, or to the dilution of  
63 contaminated SPM by flushing non-contaminated sediments (Lepage *et al.*, 2020).

64 Moreover, in the past century, most of the OBT was originate from other industrial  
65 plants present in the Rhône River and especially in its upstream part that produced  
66 luminescent paint used in watches (Eyrolle *et al.*, 2018; Jean-Baptiste *et al.*, 2018). These  
67 companies have released fine particles of tritiated compounds (usually tiny tritiated  
68 polystyrene spherules a few tens of microns in diameter) used in luminous paints (Jean-  
69 Baptiste *et al.*, 2007; Krejci and Zeller, 1979; Schürch *et al.*, 2003). In fact, these tritiated

70 technogenic particles (hot tritiated particles) could have been released directly into the river  
71 by the industrial plants, or transferred into the environment during the waste incineration  
72 process, or finally progressively transferred due to soil erosion (Schürch et al., 2003). These  
73 refractory particles that accumulate in sediments are expected to persist in the environment  
74 for a very long time (Eyrolle et al., 2018; Morereau et al., in prep.) and have also been observed  
75 in the Mediterranean Sea near the outlet of the Rhône River (Jean-Baptiste *et al.*, 2018).  
76 Although a recent review written by Eyrolle *et al.* (2018) summarized results on its specific  
77 behavior in the Rhône River, reports on the impact of hydrological events on OBT  
78 concentrations remain rare especially its dynamics during dam flushing operations.

79 This field study was conducted in the Rhône River downstream the Lake Geneva during  
80 the flushing operations of several dams in June 2012. Water and SPM samples were collected  
81 at different locations for different periods. The tritium concentrations were characterized and  
82 the results were then compared with the contents recorded before the event.

## 83 **Materials and Method**

### 84 ***Dam location and description of the flushing operations***

85 This study was conducted along the Upper Rhône River in France and Switzerland,  
86 downstream the Lake Geneva (Figure 1). This basin (95,600 km<sup>2</sup> at Beaucaire station)  
87 constitutes the main SPM input flowing into the Western Mediterranean Sea with a mean SPM  
88 flux of 6.5 Mt year<sup>-1</sup> from 2000 to 2015 (Poulier *et al.*, 2019). This work focuses on flushing  
89 operations conducted in June 2012 in three reservoirs located downstream of Lake Geneva in  
90 Switzerland (Figure 1): Verbois, Chancy-Pougny, and Génissiat. These flushing operations are  
91 described in Lepage *et al.* (2020). In brief, the water level of the three dams was lowered  
92 following the drawdown flushing method (Fruchard and Camenen, 2012) in order to remove

93 stored sediments. The large-volume Génissiat reservoir located downstream of the two other  
94 dams was flushed first (4-12 June 2012) in order to compensate for the deposition of the SPM  
95 released from the Chancy-Pougny (9-16 June 2012) and Verbois dams (9-22 June 2012).  
96 Discharge varied from  $129 \text{ m}^3 \text{ s}^{-1}$  to  $631 \text{ m}^3 \text{ s}^{-1}$  in the vicinity of Chancy-Pougny during the  
97 flushing periods (Figure ESM1 in electronic supplementary materials). Discharge increased  
98 from upstream to downstream and reached maximal values ( $1600 \text{ m}^3 \text{ s}^{-1}$ ) at Jons (Station D in  
99 Figure 1) on the 06/14, which correspond to discharges observed for biennial flood (Lepage et  
100 al., 2020). SPM concentration reached  $16.6 \text{ g L}^{-1}$  near Génissiat during its flushing and the  
101 highest SPM concentration was observed during the flushing of Verbois and Chancy-Pougny  
102 with  $48.6 \text{ g L}^{-1}$  observed at Chancy-Pougny (Figure ESM1 in electronic supplementary  
103 materials). The SPM concentrations decreased with distance and the maximum  
104 concentrations observed at Jons was  $0.9 \text{ g L}^{-1}$ . It has to be noted that floods occurred in two  
105 tributaries (Ain and Fier - Figure 1) with a limited impact on the transport of SPM (Launay,  
106 2014; Lepage et al., 2020).

### 107 ***Sampling and samples***

108 To characterize the impact of the dam flushing operations on the concentrations of  
109 HTO (water samples) and OBT (SPM samples), samples were collected at four stations (Figure  
110 1, Table 1) with different sampling periods due to logistic constrain:

- 111 • Station A at Pougny, in the downstream vicinity of Chancy-Pougny and Verbois  
112 dams. Samples were collected from the 06/09/2012 to the 06/20/2012 during  
113 the flushing operations of these two dams.
- 114 • Station B at Seyssel, downstream Génissiat dam and during its flushing  
115 operation with samples collected from the 06/04/2012 to the 06/10/2012.

- 116                   • Station C at Creys-Malville in a monitoring station used to supply the regulatory  
117                   control of the releases from NPPs (IRSN, 2015) and used in this study for  
118                   temporal comparison. Sampling was conducted before, during and after the  
119                   flushing operations, from the 05/25/2012 to the 07/01/2012.
- 120                   • Station D at Jons in a monitoring station (Masson *et al.*, 2018; Thollet *et al.*,  
121                   2018) located downstream a NPP (Figure 1) with samples collected for the main  
122                   period of flushing operations, from the 06/04/2012 to the 07/03/2012.

123

124                   Two different sampling methods were used to collect water samples (Table 1).  
125                   Instantaneous water samples were obtained manually using a stainless-steel bucket (approx.  
126                   4 L) at stations A, B and D, and by an Automatic Water Sampler (AWS) at station C. The AWS  
127                   used for water sampling was a Bühler 4011 (HachLange, Germany) and set to collect 10 mL  
128                   every 65 minutes to constitute time integrated raw water samples (6 days) stored in glass  
129                   bottles. Samples were all stored in dark glass bottles at 4°C until analyses.

130                   For OBT measurement, SPM samples were collected using Particle Trap (PT). These  
131                   samplers were built following the German Environmental Specimen Bank model (Masson *et*  
132                   *al.*, 2018; Schulze *et al.*, 2007). Water flows through the high-quality stainless steel box and its  
133                   velocity is reduced by two baffles. SPM settle in two sedimentation basins in the box. Samples  
134                   were collected every 1 to 4 days (see Table ESM1 in electronic supplementary materials). Due  
135                   to logistic constrain, the PT were set on the bottom of the river at Stations A, B and D while at  
136                   Station C it was approx. 50 cm below the surface. Prior to analysis, SPM samples were stored  
137                   in the dark at 4°C, deep-frozen, freeze-dried, and homogenized through a 2 mm stainless steel  
138                   sieve. Dried samples were then immediately sealed under soft vacuum in aluminized bags until  
139                   analyses in order to avoid the exchange of water molecules with the atmosphere.

140 **Grain-size distribution**

141 For the measure of volumetric grain size distribution, a representative aliquot of each  
142 wet sample was taken before processing and was analyzed on a CILAS 1190 laser particle size  
143 analyzer (Masson et al., 2018) according to the ISO 13320 standard method (AFNOR, 2009).  
144 Clay (<1.95 µm), Silt (<63 µm) and Sand (<2000 µm) were estimated.

145 **Particulate Organic Carbon analysis**

146 The determination of Particulate Organic Carbon (POC) in SPM samples was performed  
147 using a carbon analyzer (Thermo Electron, CHN Flash 2000) by INRA laboratory (Arras, France).  
148 Decarbonation was completed using hydrochloric acid according to the NF ISO 10694 standard  
149 method (AFNOR, 1995). The limit of quantification (LQ) was estimated to be 0.05 g kg<sup>-1</sup> and  
150 analytical uncertainty varied between ~3% and ~6% (k=2), depending on the POC  
151 concentration.

152 **Tritium analyses**

153 The concentrations of the two main forms of tritium (HTO and OBT) were investigated.  
154 The HTO analyses were performed on 20ml of filtered water (< 0.2 µm) either directly filtered  
155 in the field for punctual samples or in the laboratory for time-integrated ones sampled by  
156 AWS. Filtered waters were analyzed by classical scintillation counting for HTO content (Tricarb  
157 3180 TR/SL), by taking an aliquot of 10 mL and adding 10 mL of scintillation liquid (UltimaGold  
158 LLT).

159 OBT analyses were conducted using the Helium-3 ingrowth method after placing the  
160 sample in a vacuum (10<sup>-6</sup> mbar) and storing it for 3 to 4 months (Cossonnet *et al.*, 2009). The  
161 Helium-3 is a decay product of tritium—and its concentration is measured by mass  
162 spectrometry (Jean-Baptiste *et al.*, 2010). OBT concentrations were converted in Becquerel

163 per liter of combustion water ( $\text{Bq L}^{-1}_{\text{cw}}$ ) by using the percentage of hydrogen measured in each  
164 sample by a CHNS elemental analyzer (Elementar, vario MICROcube).

165 For both methods, detection limit was around  $0.6 \text{ Bq L}^{-1}$  with a detection threshold of  
166  $1.2 \text{ Bq L}^{-1}$  (Currie, 1968; Eyrolle et al., 2018). All the measured concentrations were corrected  
167 for radioactive decay to the sampling date.

## 168 **Results**

### 169 ***Variation of HTO contents***

170 The concentrations of HTO measured during this study were similar at Stations A and  
171 B (Figure 2; Table ESM1) with respectively a mean HTO concentration of  $1.1 \text{ Bq L}^{-1}$  (with  
172 standard deviation  $\text{sd} = 0.3 \text{ Bq L}^{-1}$ ) and  $1.2 \text{ Bq L}^{-1}$  ( $\text{sd} = 0.2 \text{ Bq L}^{-1}$ ). At station C, the only value  
173 observed above the detection limit ( $0.8 \pm 0.7 \text{ Bq L}^{-1}$ ) was not significantly different to the two  
174 upstream stations. The HTO concentration at this station remained very low as several values  
175 were lower than the detection limit. For these three stations, no significant variation of HTO  
176 contents were observed during the flushing operations. At station D, two significant increases  
177 were observed during the flushing operation the 06/05/2012 and the 06/16/2012 with  
178 respectively  $13.1 \pm 1.0 \text{ Bq L}^{-1}$  and  $11.8 \pm 1.0 \text{ Bq L}^{-1}$ . The other concentrations measured at  
179 station D were similar to the values observed at the other stations with  $1.1 \text{ Bq L}^{-1}$  ( $\text{sd} = 0.3 \text{ Bq}$   
180  $\text{L}^{-1}$ ).

### 181 ***OBT***

182 During the period studied, OBT contents ranged from  $180 \pm 40 \text{ Bq L}^{-1}_{\text{cw}}$  to  $11,700 \pm$   
183  $2,300 \text{ Bq L}^{-1}_{\text{cw}}$  (Figure 3 - Table ESM2) with a mean value of  $1,640 \text{ Bq L}^{-1}_{\text{cw}}$  ( $\text{sd} = 2,600 \text{ Bq L}^{-1}_{\text{cw}}$ ).  
184 The mean OBT concentration at stations A and B were similar with respectively  $850 \text{ Bq L}^{-1}_{\text{cw}}$   
185 ( $\text{sd} = 320 \text{ Bq L}^{-1}_{\text{cw}}$ ) and  $890 \text{ Bq L}^{-1}_{\text{cw}}$  ( $\text{sd} = 330 \text{ Bq L}^{-1}_{\text{cw}}$ ) while significant variations of OBT were

186 observed at the two other stations. At station C, the first value measured was significantly  
187 higher than the other with  $11,700 \pm 2,300 \text{ Bq L}^{-1}_{\text{cw}}$  observed the 06/09/12, then decreased to  
188 reach similar level than the upstream stations A and B. At station D, a high concentration of  
189 OBT was observed 48h afterwards that of station C ( $6,670 \pm 340 \text{ Bq L}^{-1}_{\text{cw}}$  the 06/11/12). The  
190 other values measured during dam flushing operations (mean =  $680 \text{ sd } 400 \text{ Bq L}^{-1}_{\text{cw}}$ ) were  
191 similar to those of station A and B. Silt particles always constituted the major part of the SPM  
192 whatever the station with proportions ranging from 35.8 to 94.2% (Table ESM2). Sand  
193 particles were mostly observed at stations A and B, close to the studied dams. Those particles  
194 were rapidly stored in the Upper Rhône River as the proportion of sand were very low at  
195 Stations C and D. The POC concentration observed at Station A and C remained constant while  
196 some variations were observed at the two other stations (Table ESM2). Maximal  
197 concentration was observed at Station D with  $36.0 \pm 1.8 \text{ mg kg}^{-1}$ .

198

## 199 **Discussion**

200 Most of the HTO concentrations measured at the four stations were similar to those  
201 observed from 2003 to 2015 by the Swiss Federal office of public health (OFSP, 2015) in water  
202 samples collected near station A ( $1.03 \text{ Bq L}^{-1}$  with  $\text{sd} = 0.41 \text{ Bq L}^{-1}$ ) and not affected by NPP  
203 releases. Furthermore, the concentrations remained in the range of values observed for the  
204 natural background in waters of French pristine rivers (Ducros *et al.*, 2018). Although, the  
205 increases observed at station D was strictly related to the releases of HTO by the NPP and not  
206 related to the dam flushing operations. As mentioned in the introduction, NPPs are allowed  
207 to release radionuclides into river systems conforming to liquid flow rate thresholds. The  
208 sampling performed at station D for this study was conducted during short radionuclide



209 release operations with 12 events from 3 to 12 hours (Electricité De France, personal  
210 communication). The absence of higher HTO concentrations in the other samples of station D  
211 was due to the time lapse between the NPP's release operations and the samplings,  
212 performed 10 hours after the end of the operations. The transit time between the NPP and  
213 the sampling station has been validated by modeling using the hydrological model CASTEAUR  
214 (Beaugelin-Seiller et al., 2002). The increase was only observed at station D as the NPP is  
215 downstream the other stations (Figure 1). Overall, the values measured during this NPP's  
216 operations were similar to the mean concentrations recorded during radionuclide release  
217 operations at this NPP from 2011 to 2014 ( $12 \text{ Bq L}^{-1}$ ) (IRSN, 2015). Therefore, despite the input  
218 of high quantity of water from the flushing operations and characterized by a lower level of  
219 HTO than from the NPP releases, no significant effect of dilution was observed. In the Upper  
220 Rhône River, dam flushing operations do not affect HTO concentrations in the water column  
221 and, in the absence of NPP releases, these concentrations remain similar from upstream to  
222 downstream. Thus, in contrast with certain trace metals remobilized during such events such  
223 as arsenic (Bretier *et al.*, 2019; Monnin *et al.*, 2018), no significant transfer of tritium from  
224 sediment remobilization to the dissolved phase was observed. Moreover, these results did not  
225 show any significant contribution of tritium either from HTO potentially stored in the pore  
226 waters of remobilized sediments, or from OBT associated to fine particles ( $<0.45\mu\text{m}$ ) towards  
227 waters.

228         Despite the high concentrations of OBT observed at stations C and D, all the  
229 concentrations remained in the same range as those reported by Eyrolle *et al.*, (2018) (from  
230 4 to  $30,200 \text{ Bq L}^{-1}_{\text{cw}}$ ) and confirmed the high variability due to the presence of tritiated  
231 technogenic particles in the Rhône River. In fact, OBT concentrations are generally expected  
232 to be rather close to HTO concentrations in most other cases (Eyrolle-Boyer *et al.*, 2015). For

233 example, in the sediments of the Rhône's tributaries not affected by luminous paints,  
234 background values were lower than  $10 \text{ Bq L}^{-1}_{\text{cw}}$  (Eyrolle *et al.*, 2018). Since neither significant  
235 temporal nor spatial trends were observed in OBT concentrations, we hypothesize that these  
236 results can be explained by the heterogeneous distribution of technogenic tritium in  
237 suspended or deposited sedimentary particles leading to large variations of tritium  
238 concentrations within the samples even though collected in areas close to each other. Also,  
239 this result is confirmed by the absence of relation between OBT and POC concentrations. In  
240 the Rhône River, OBT is not only bound to organic matter of natural origin, but would very  
241 likely be trapped inside fine polystyrene particles from technogenic tritium (Eyrolle *et al.*,  
242 2018). Regarding grain size, any specific relation was observed but the highest level of OBT at  
243 Jons ( $6670 \text{ Bq L}^{-1}_{\text{cw}}$ ) was observed in a sample characterized by a high level of sand (42.2%)  
244 (Table ESM2). This result highlights that these tritiated particles most probably come from the  
245 sediment stored in the dams and flushed during the operations. It also confirms their  
246 heterogeneously distribution as such increase of OBT concentration was not observed in  
247 Stations A and B. Furthermore, with the evolution of technologies and the introduction of  
248 guidelines for the protection of the environment (Morereau *et al.*, in prep.), OBT should no  
249 longer be emitted at this level in the environment and its occurrence should be mainly related  
250 to its long-time presence in the sediments of the Rhône River (Eyrolle *et al.*, 2018). The highest  
251 concentrations observed below the dams might be related to the resuspension of old  
252 contaminated sediments stored in the studied dams as observed for PAHs by Lepage *et al.*  
253 (2020). The OBT is expected to be transported downstream and its concentration should  
254 decrease from upstream to downstream in the following decades.  
255

## 256 **Conclusion**

257           The consequences of dam flushing operations on tritium concentrations were  
258 investigated in the Rhône River downstream Lake Geneva by characterizing HTO and OBT  
259 concentrations respectively in filtered water and suspended particulate matter (SPM) samples  
260 collected downstream three dams flushed in June 2012. Our results demonstrate that dam  
261 flushing operations do not significantly affect tritium concentrations in the water column as  
262 they remained similar to those previously recorded during normal flow conditions. Analyses  
263 of OBT in the SPM demonstrate transient increases in concentration during dam flushing  
264 operations. Those are most probably explained by the resuspension of fine tritiated particles  
265 from watchmaking activities. As the increases were transient and not observed at all the  
266 stations, no significant temporal nor spatial trend following dam flushing operations can be  
267 drawn clearly. However, OBT is heterogeneously distributed in sediments of the Rhône River  
268 and large amounts of this radionuclide are still stored in the Upper Rhône sediments. Extreme  
269 events such as dam flushing operations can redistribute these storages to the downstream  
270 part of the River. The radiotoxicity of free tritium (HTO) or organically bound tritium to  
271 naturally occurring organic compounds (OBT) are low comparing to most other natural or  
272 artificial radionuclides. Nevertheless, the specific radiotoxicity of organically bound tritium to  
273 synthetic organic particles are unknown to our knowledge as well as their transfer rates  
274 toward living organisms.

## 275 **Acknowledgements**

276           This study was supported by the Rhône Sediment Observatory (OSR), a multi-partner  
277 research program partly funded by the Rhône Plan and by the European Regional  
278 Development Fund (ERDF) allocated by the European Union. We thank the teams of OSR,

279 especially those of INRAE and CEREGE, for their contribution in the field for water and  
280 sediment sampling. We are very grateful to CNR, DREAL ARA, SIG and EDF services for  
281 cooperating with OSR and sharing their monitoring data.

## 282 **References**

283 AFNOR, 2009. NF ISO 10694: Particle Size Analysis - Laser Diffraction Methods. 51 pp.

284 AFNOR, 1995. NF ISO 10694: Soil quality - Determination of organic and total carbon after dry  
285 combustion (elementary analysis). 7 pp.

286 Beaugelin-Seiller, K., Boyer, P., Garnier-Laplace, J., Adam, C., 2002. Casteaur: A simple tool to  
287 assess the transfer of radionuclides in waterways. *Health Phys.* 83, 539–542.  
288 <https://doi.org/10.1097/00004032-200210000-00013>

289 Bravard, J.-P., Clémens, A., 2008. Le Rhône en 100 questions. Méditerranée (report in French)  
290 295 pp.

291 Bretier, M., Dabrin, A., Bessueille-Barbier, F., Coquery, M., Barbier-Bessueille, F., Coquery, M.,  
292 2019. Comparison of integrative passive sampling and discrete monitoring to assess the  
293 impact of dam flushing event on dissolved trace elements concentrations. *Sci. Total*  
294 *Environ.* 656, 433–446. <https://doi.org/10.1016/j.scitotenv.2018.11.303>

295 Brown, C.B., 1944. The control of reservoir silting. US Gov. Print. Off. 521, 168 pp.

296 Ciffroy, P., Siclet, F., Damois, C., Luck, M., 2006. A dynamic model for assessing radiological  
297 consequences of tritium routinely released in rivers. Application to the Loire River. *J.*  
298 *Environ. Radioact.* 90, 110–139. <https://doi.org/10.1016/j.jenvrad.2006.06.012>

299 Cossonnet, C., Neiva Marques, A.M., Gurriaran, R., 2009. Experience acquired on  
300 environmental sample combustion for organically bound tritium measurement. *Appl.*  
301 *Radiat. Isot.* 67, 809–811. <https://doi.org/10.1016/j.apradiso.2009.01.039>

302 Currie, L.A., 1968. Limits for Qualitative Detection and Quantitative Determination:  
303 Application to Radiochemistry. *Anal. Chem.* 40, 586–593.  
304 <https://doi.org/10.1021/ac60259a007>

305 Ducros, L., Eyrolle, F., Vedova, C. Della, Charmasson, S., Leblanc, M., Mayer, A., Babic, M.,  
306 Antonelli, C., Mourier, D., Giner, F., 2018. Tritium in river waters from French  
307 Mediterranean catchments: Background levels and variability. *Sci. Total Environ.* 612,  
308 672–682. <https://doi.org/10.1016/j.scitotenv.2017.08.026>

309 Eisenbud, M., Bennett, B., Blanco, R.E., 1979. Tritium in the environment. NCRP Report No.  
310 62. *Behav. Tritium Environ.*

311 Eyrolle-Boyer, F., Boyer, P., Claval, D., Charmasson, S., Cossonnet, C., 2014. Apparent  
312 enrichment of organically bound tritium in rivers explained by the heritage of our past. *J.*  
313 *Environ. Radioact.* 136, 162–168. <https://doi.org/10.1016/j.jenvrad.2014.05.019>

314 Eyrolle-Boyer, F., Claval, D., Cossonnet, C., Zebracki, M., Gairoard, S., Radakovitch, O., Calmon,  
315 P., Leclerc, E., 2015. Tritium and 14C background levels in pristine aquatic systems and  
316 their potential sources of variability. *J. Environ. Radioact.* 139, 24–32.  
317 <https://doi.org/10.1016/j.jenvrad.2014.09.015>

318 Eyrolle, F., Lepage, H., Copard, Y., Ducros, L., Claval, D., Saey, L., Cossonnet, C., Giner, F.,  
319 Mourier, D., 2018. A brief history of the origins and contents of Organically Bound Tritium  
320 (OBT) and 14C in the sediments of the Rhône watershed. *Sci. Total Environ.* in review,  
321 40–51. <https://doi.org/10.1016/j.scitotenv.2018.06.074>

322 Fruchard, F., Camenen, B., 2012. Reservoir sedimentation: different type of flushing-friendly  
323 flushing example of genissiat dam flushing. *ICOLD Int. Symp. Dams a Chang. world* 6 pp.

324 IRSN, 2015. Bilan de l'état radiologique de l'environnement français de juin 2011 à décembre  
325 2014. PRP-ENV (french report) 253p.

326 IRSN, 2013. Constat radiologique Vallée du Rhône. Rapport final relatif au milieu aquatique.  
327 PRP-ENV/SESURE (french report) 37, 68p.

328 Jean-Baptiste, P., Baumier, D., Fourré, E., Dapoigny, A., Clavel, B., 2007. The distribution of  
329 tritium in the terrestrial and aquatic environments of the Creys-Malville nuclear power  
330 plant (2002-2005). J. Environ. Radioact. 94, 107-118.  
331 <https://doi.org/10.1016/j.jenvrad.2007.01.010>

332 Jean-Baptiste, P., Fontugne, M., Fourré, E., Marang, L., Antonelli, C., Charmasson, S., Siclet, F.,  
333 2018. Tritium and radiocarbon levels in the Rhône river delta and along the French  
334 Mediterranean coastline. J. Environ. Radioact. 187, 53-64.  
335 <https://doi.org/10.1016/j.jenvrad.2018.01.031>

336 Kalnejais, L.H., Martin, W.R., Bothner, M.H., 2010. The release of dissolved nutrients and  
337 metals from coastal sediments due to resuspension. Mar. Chem. 121, 224-235.  
338 <https://doi.org/10.1016/j.marchem.2010.05.002>

339 Kim, S.B., Baglan, N., Davis, P.A., 2013. Current understanding of organically bound tritium  
340 (OBT) in the environment. J. Environ. Radioact. 126, 83-91.  
341 <https://doi.org/10.1016/j.jenvrad.2013.07.011>

342 Krejci, K., Zeller, J., 1979. Tritium pollution in the Swiss luminous compound industry, in:  
343 International Symposium on the Behaviour of Tritium in the Environment. IAEA, Vienna,  
344 pp. 65-77.

345 Launay, M., 2014. Flux de matières en suspension, de mercure et de PCB particulières dans le  
346 Rhône, du Léman à la Méditerranée. Thesis (in French) 434.  
347 <https://doi.org/10.1002/oby.20222>

348 Lepage, H., Launay, M., Le Coz, J., Angot, H., Miège, C., Gairoard, S., Radakovitch, O., Coquery,  
349 M., 2020. Impact of dam flushing operations on sediment dynamics and quality in the

350 upper Rhône River, France. *J. Environ. Manage.* 255, 109886.  
351 <https://doi.org/10.1016/j.jenvman.2019.109886>

352 Masson, M., Angot, H., Le Bescond, C., Launay, M., Dabrin, A., Miège, C., Le Coz, J., Coquery,  
353 M., 2018. Sampling of suspended particulate matter using particle traps in the Rhône  
354 River: Relevance and representativeness for the monitoring of contaminants. *Sci. Total*  
355 *Environ.* 637–638, 538–549. <https://doi.org/10.1016/j.scitotenv.2018.04.343>

356 Monnin, L., Ciffroy, P., Garnier, J.M., Ambrosi, J.P., Radakovitch, O., 2018. Remobilization of  
357 trace metals during laboratory resuspension of contaminated sediments from a dam  
358 reservoir. *J. Soils Sediments* 18, 2596–2613. [https://doi.org/10.1007/s11368-018-1931-](https://doi.org/10.1007/s11368-018-1931-5)  
359 5

360 Morereau, A., Lepage, H., Claval, D., Cossonnet, C., Radakovitch, O., Ambrosi, J.-P., Mourier,  
361 B., Eyrolle, F., n.d. Technogenic tritium contamination from watchmaking industry and its  
362 resiliency in river sediments of the Rhône River (France).

363 OFSP, 2015. Radenviro.ch [WWW Document]. URL <http://www.radenviro.ch/fr->  
364 CH/measures/274 (accessed 7.5.16).

365 Peter, D.H., Castella, E., Slaveykova, V.I., 2014. Effects of a reservoir flushing on trace metal  
366 partitioning, speciation and benthic invertebrates in the floodplain. *Environ. Sci. Process.*  
367 *Impacts* 16, 2692–2702. <https://doi.org/10.1039/c4em00387j>

368 Peteuil, C., Fruchart, F., Abadie, F., Reynaud, S., Camenen, B., Guertault, L., 2013. Sustainable  
369 management of sediment fluxes in reservoir by environmental friendly flushing : the case  
370 study of the Genissiat dam on the upper Rhone River (France), in: 12th International  
371 Conference on River Sedimentation. Kyoto (Japan), pp. 1147–1156.

372 Poulhier, G., Launay, M., Le Bescond, C., Thollet, F., Coquery, M., 2019. Combining flux  
373 monitoring and estimation to establish annual budgets of suspended particulate matter

374 and associated pollutants in the Rhône River from Lake Geneva to the Mediterranean  
375 Sea. *Sci. Total Environ.* 658, 457–473. <https://doi.org/10.1016/J.SCITOTENV.2018.12.075>

376 Provansal, M., Dufour, S., Sabatier, F., Anthony, E.J., Raccasi, G., Robresco, S., 2014. The  
377 geomorphic evolution and sediment balance of the lower Rhône River (southern France)  
378 over the last 130years: Hydropower dams versus other control factors. *Geomorphology*  
379 219, 27–41. <https://doi.org/10.1016/j.geomorph.2014.04.033>

380 Schulze, T., Ricking, M., Schröter-Kermani, C., Körner, A., Denner, H.-D., Weinfurtner, K.,  
381 Winkler, A., Pekdeger, A., 2007. The German Environmental Specimen Bank - Sampling,  
382 processing, and archiving sediment and suspended particulate matter. *J. Soils Sediments*  
383 7, 361–367. <https://doi.org/10.1065/jss2007.08.248>

384 Schürch, M., Kozel, R., Schotterer, U., Tripet, J.-P.P., Schürch, M., Kozel, R., Schotterer, U.,  
385 Tripet, J.-P.P., 2003. Observation of isotopes in the water cycle—the Swiss National  
386 Network (NISOT). *Environ. Geol.* 45, 1–11. <https://doi.org/10.1007/s00254-003-0843-9>

387 Syvitski, J.P.M., Vörösmarty, C.J., Kettner, A.J., Green, P., 2005. Impact of humans on the flux  
388 of terrestrial sediment to the global coastal ocean. *Science* (80-. ). 308, 376–380.  
389 <https://doi.org/10.1126/science.1109454>

390 Thollet, F., Le Bescond, C., Lagouy, M., Gruat, A., Grisot, G., Le Coz, J., Coquery, M., Lepage, H.,  
391 Gairoard, S., Gattacceca, J.C., Ambrosi, J.-P., Radakovitch, O., 2018. Observatoire des  
392 sédiments du Rhône. <https://doi.org/10.17180/OBS.OSR>

393 Ueda, S., Hasegawa, H., Kakiuchi, H., Ochiai, S., Akata, N., Hisamatsu, S., 2015. Nuclear  
394 accident-derived <sup>3</sup>H in river water of Fukushima Prefecture during 2011-2014. *J. Environ.*  
395 *Radioact.* 146, 102–109. <https://doi.org/10.1016/j.jenvrad.2015.04.014>

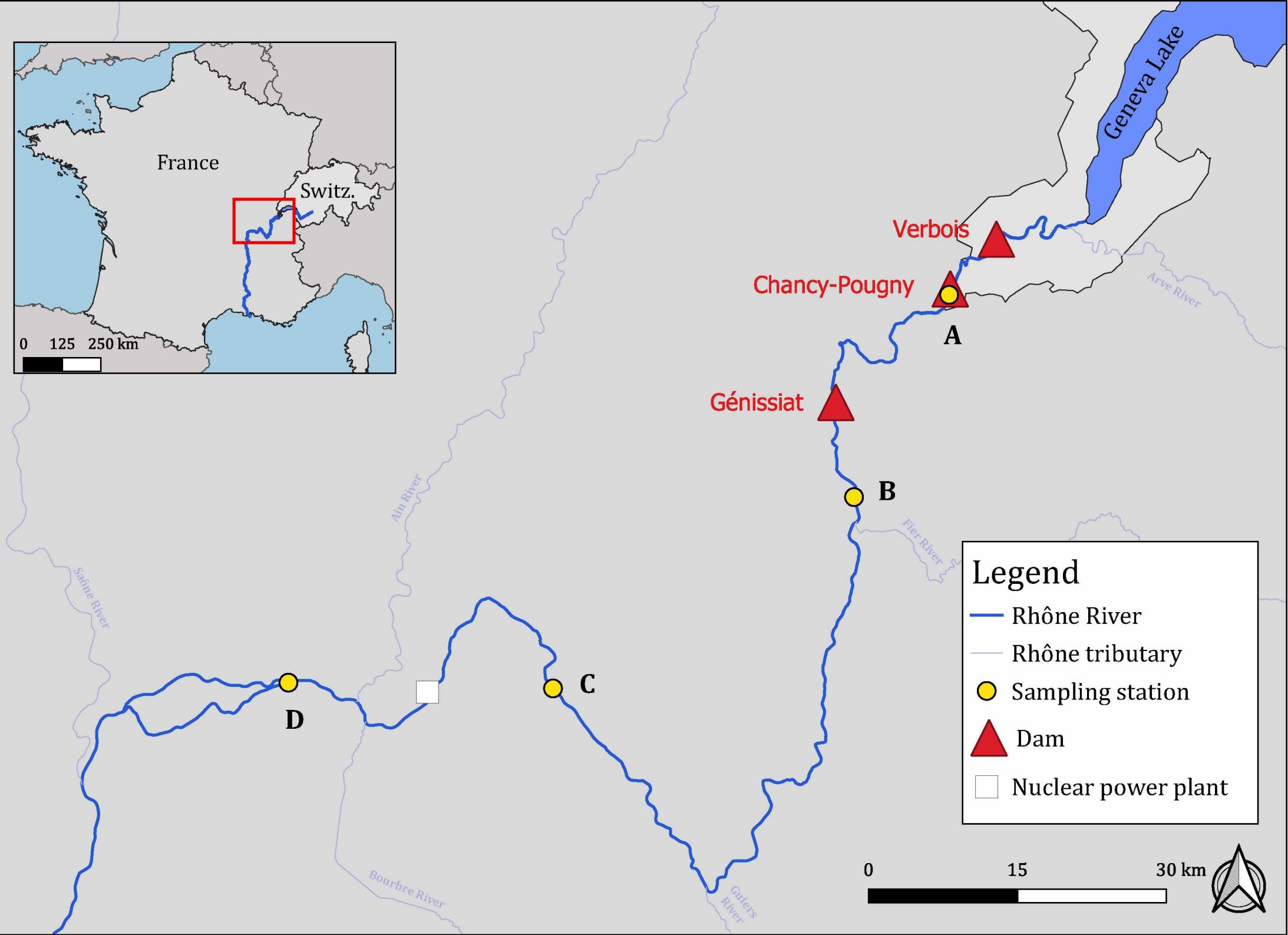
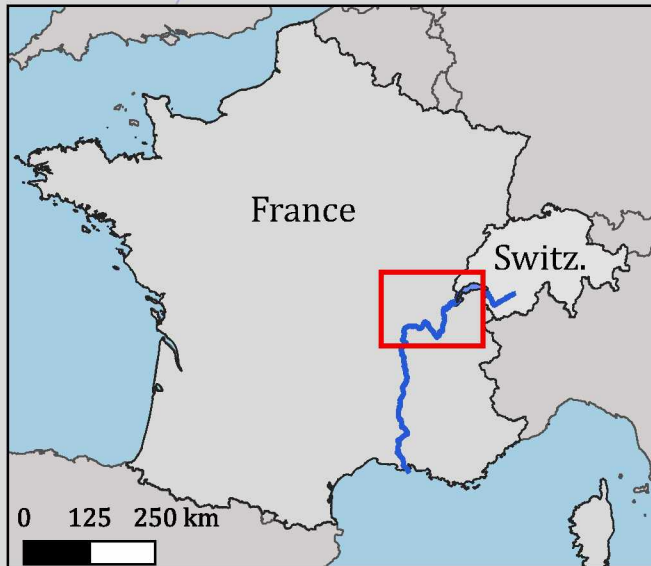
396



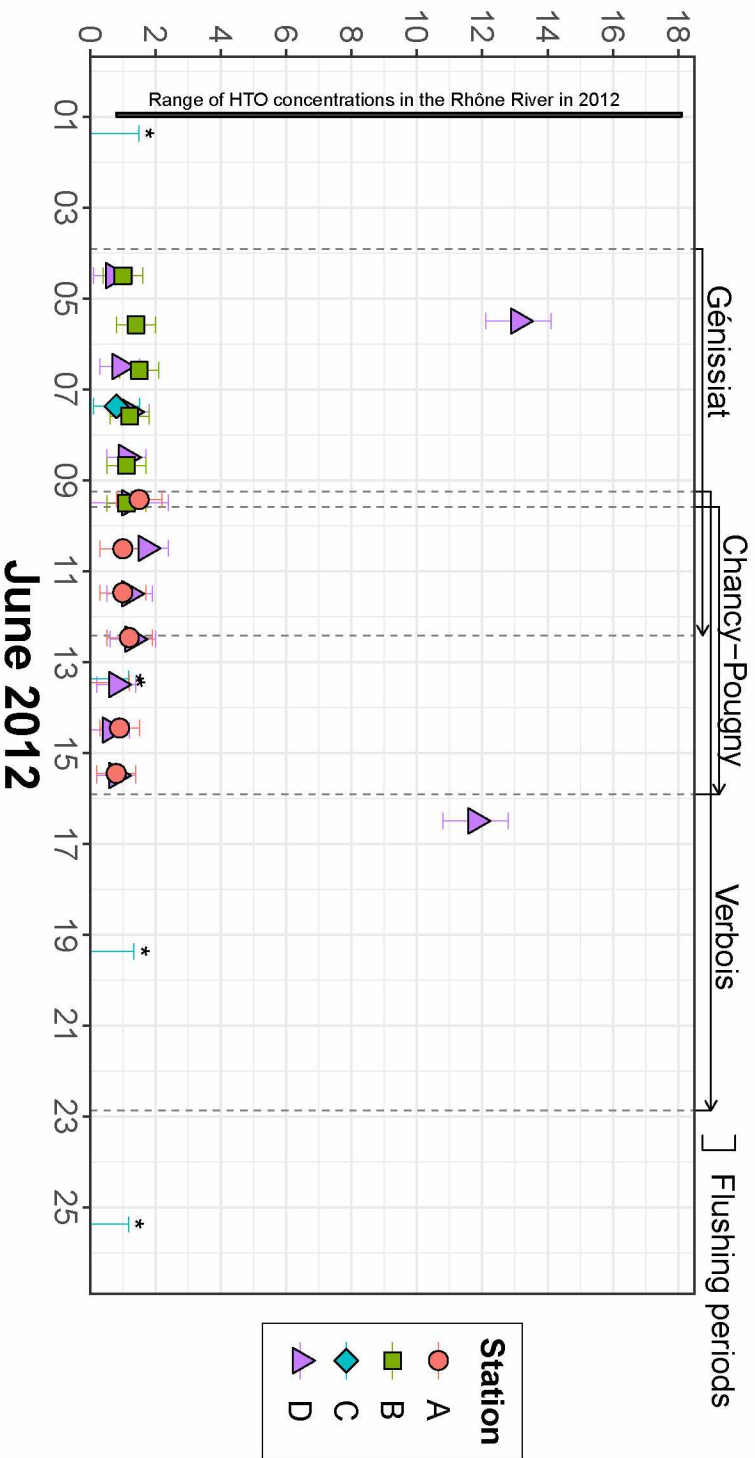
Figure 1 - Location of the studied dams, the nuclear power plant and the sampling stations in the Rhône River.

Figure 2 - Concentration of tritium in filtered waters (HTO in  $\text{Bq L}^{-1}$ ) measured at the four stations during the flushing operations of Génissiat, Chancy-Pougny and Verbois dams and range of the concentrations observed on the water of the Rhône River in 2012 (IRSN, 2013). \* samples with HTO concentration below the detection limit.

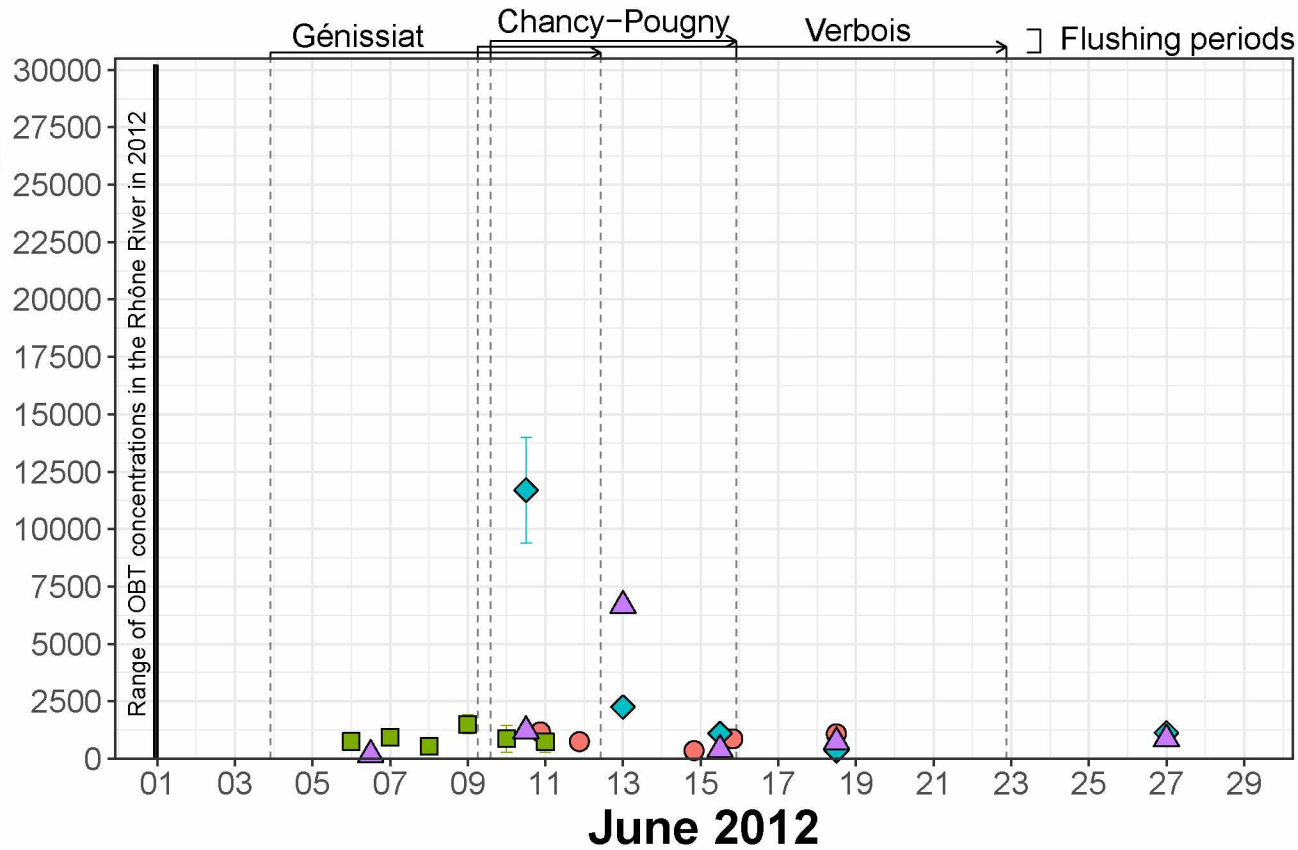
Figure 3 - Concentration of organically bound tritium (OBT in  $\text{Bq L}^{-1}_{\text{cw}}$ ) measured in SPM collected at the four stations during the flushing operations of Génissiat, Chancy-Pougny and Verbois dams and range of the concentrations observed on sediment and SPM of the Rhône River in 2012 (Eyrolle *et al.*, (2018)).



# HTO concentration (Bq.L<sup>-1</sup>)



OBT concentration ( $\text{Bq}\cdot\text{L}^{-1}_{\text{CW}}$ )



**Table 1 - Number (n) of samples collected during the studied flushing operations for tritiated water (HTO) and organically bound tritium (OBT) and associated sampling method used. AWS = automatic water sampler, PT = particle trap.**

Location	Latitude (WGS 1984)	Longitude (WGS 1984)	HTO	OBT
A	+46.1442	+5.9644	Manual (n=7)	PT (n=5)
B	+45.9642	+5.8310	Manual (n=6)	PT (n=6)
C	+45.80	+5.4322	AWS (n=6)	PT (n=5)
D	+5.0896	+45.8121	Manual (n=13)	PT (n=6)

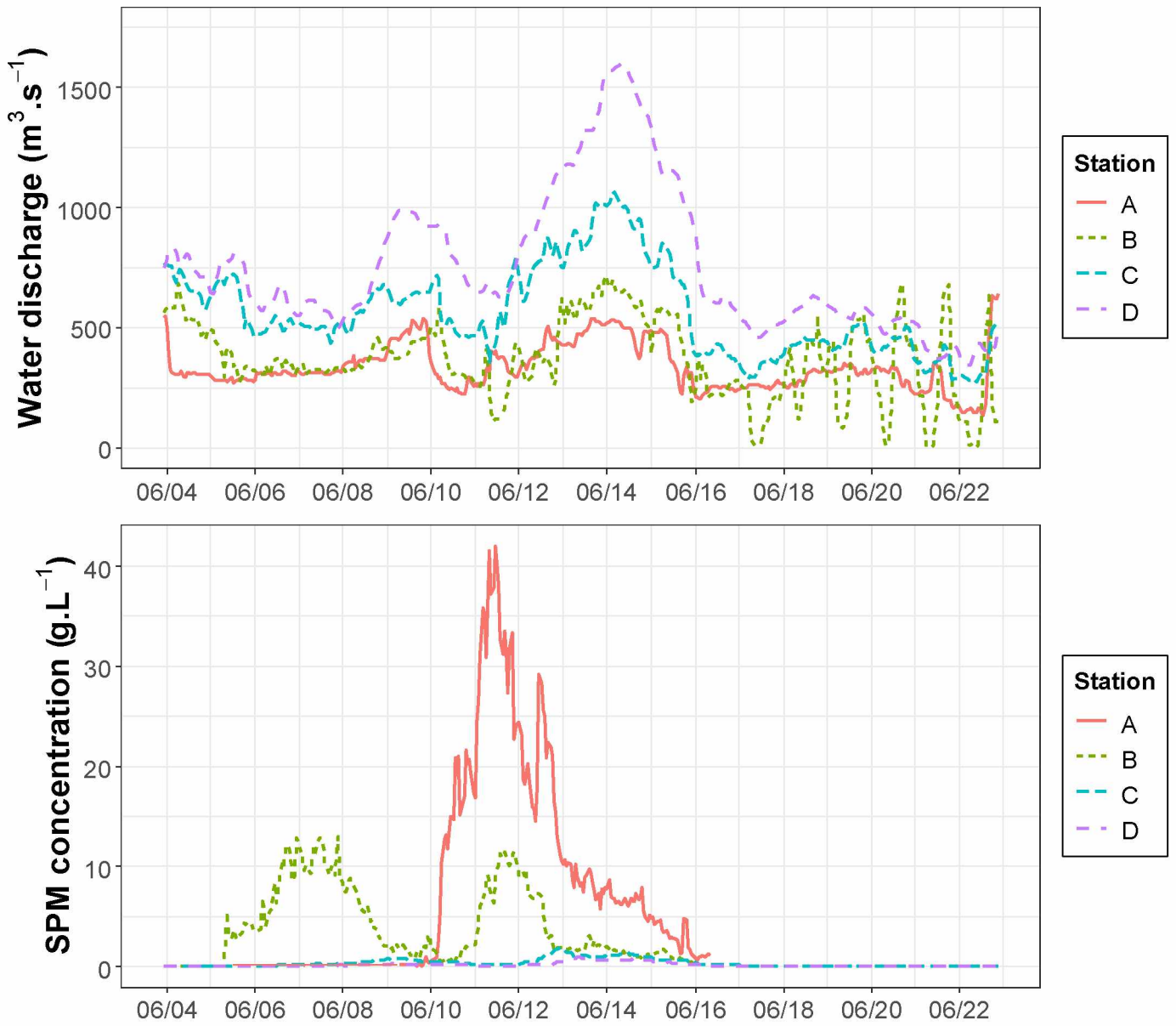
## Declaration of interests

The authors declare that they have no known competing financial interests or personal relationships that could have appeared to influence the work reported in this paper.

The authors declare the following financial interests/personal relationships which may be considered as potential competing interests:

Electronic supplementary materials

Figure ESM1 - Discharge and suspended particulate matters (SPM) concentration measured at the four stations during the flushing operations (Thollet et al., 2018).



**Table ESM1 - Tritiated water concentration in the water samples collected for this study. "<" indicate concentration under the detection limit.**

Station	Sampling date	Concentration (Bq L <sup>-1</sup> )
A	06/09/2012 10:20	1.5 ± 0.7
A	06/10/2012 12:20	1.0 ± 0.7
A	06/11/2012 11:30	1.0 ± 0.7
A	06/12/2012 11:15	1.2 ± 0.7
A	06/13/2012 10:55	< 1.2
A	06/14/2012 11:00	0.9 ± 0.6
A	06/15/2012 11:00	0.8 ± 0.6
B	06/04/2012 12:05	1.0 ± 0.6
B	06/05/2012 14:00	1.4 ± 0.6
B	06/06/2012 14:00	1.5 ± 0.6
B	06/07/2012 14:15	1.2 ± 0.6
B	06/08/2012 16:15	1.1 ± 0.6
B	06/09/2012 12:15	1.1 ± 0.6
C	05/25/2012 09:00	< 1.4
C	06/01/2012 09:00	< 1.5
C	06/07/2012 09:00	0.8 ± 0.7
C	06/13/2012 09:00	< 1.2
C	06/19/2012 09:00	< 1.3
C	06/25/2012 09:00	< 1.2
D	06/04/2012 12:00	0.7 ± 0.6
D	06/05/2012 12:00	13.1 ± 1.0
D	06/06/2012 12:00	0.9 ± 0.6
D	06/07/2012 12:00	1.2 ± 0.6
D	06/08/2012 12:00	1.1 ± 0.6
D	06/09/2012 12:00	1.2 ± 1.2
D	06/10/2012 12:00	1.7 ± 0.7
D	06/11/2012 12:00	1.2 ± 0.7
D	06/12/2012 12:00	1.3 ± 0.7
D	06/13/2012 12:00	0.8 ± 0.6
D	06/14/2012 12:00	0.6 ± 0.6
D	06/15/2012 12:00	0.8 ± 0.6
D	06/16/2012 12:00	11.8 ± 1.0

**Table ESM2 - Organically bound tritium concentrations, clay/silt/sand content and POC concentrations in the suspended particulate matters (SPM) samples collected by particles trap for this study. n.a.: not analyzed; ± analytical uncertainty.**

Station	Sampling start	Sampling end	Concentration (Bq kg <sup>-1</sup> )	Concentration (Bq L <sup>-1</sup> <sub>cw</sub> )	Clay (%)	Silt (%)	Sand (%)	POC (mg.kg <sup>-1</sup> )
A	06/10/2012 11:00	06/11/2012 07:00	16 ± 8	1180 ± 400	3.4	72.8	23.8	9.2 ± 0.5
A	06/11/2012 11:15	06/12/2012 07:00	7 ± 1	750 ± 40	2.5	50.4	47.1	9.8 ± 0.5
A	06/14/2012 08:00	06/15/2012 08:00	5 ± 1	360 ± 20	2.0	41.1	56.8	9.6 ± 0.5
A	06/15/2012 08:00	06/16/2012 08:00	8 ± 1	870 ± 40	n.a	n.a	n.a	n.a
A	06/16/2012 12:00	06/20/2012 11:59	15 ± 1	1090 ± 60	n.a	n.a	n.a	n.a
B	06/05/2012 12:00	06/06/2012 11:59	17 ± 1	750 ± 160	2.2	59.9	37.9	22.8 ± 0.9
B	06/06/2012 12:00	06/07/2012 11:59	12 ± 1	940 ± 330	2.0	53.1	44.9	18.8 ± 0.8
B	06/07/2012 12:00	06/08/2012 11:59	6 ± 1	540 ± 220	2.8	68.0	29.3	15.3 ± 0.7
B	06/08/2012 12:00	06/09/2012 11:59	24 ± 2	1500 ± 420	1.5	35.8	62.7	6.8 ± 0.4
B	06/09/2012 12:00	06/10/2012 11:59	6 ± 1	870 ± 580	1.6	42.7	55.7	12.1 ± 0.6
B	06/10/2012 12:00	06/11/2012 11:59	5 ± 1	730 ± 460	1.9	47.3	50.8	11.9 ± 0.6
C	06/09/2012 12:00	06/11/2012 11:59	279 ± 14	11700 ± 2300	7.1	92.7	0.2	15.3 ± 0.7
C	06/11/2012 12:00	06/14/2012 11:59	51 ± 3	2250 ± 120	4.4	94.2	1.3	11.8 ± 0.5
C	06/14/2012 12:00	06/16/2012 11:59	23 ± 1	1100 ± 60	5.2	93.2	1.7	11.3 ± 0.5
C	06/16/2012 12:00	06/20/2012 11:59	8 ± 1	340 ± 20	4.7	87.9	7.4	n.a
C	06/20/2012 12:00	07/03/2012 11:59	21 ± 2	1130 ± 60	n.a	n.a	n.a	n.a



D	06/05/2012 12:00	06/07/2012 11:59	4 ± 1	180 ± 40	4.8	83.9	11.4	15.8 ± 0.7
D	06/09/2012 12:00	06/11/2012 11:59	32 ± 2	1210 ± 210	4.7	93.2	2.1	17.1 ± 0.8
D	06/11/2012 12:00	06/14/2012 11:59	174 ± 9	6670 ± 340	3.2	54.6	42.2	8.1 ± 0.5
D	06/14/2012 12:00	06/16/2012 11:59	5 ± 1	400 ± 20	3.6	93.0	3.5	12.1 ± 0.6
D	06/16/2012 12:00	06/20/2012 11:59	10 ± 1	730 ± 40	5.6	92.5	1.9	n.a
D	06/20/2012 12:00	07/03/2012 11:59	20 ± 1	860 ± 40	4.9	93.0	2.0	36.0 ± 1.8