



HAL
open science

Gallai's path decomposition conjecture for graphs of small maximum degree

Marthe Bonamy, Thomas J. Perrett

► **To cite this version:**

Marthe Bonamy, Thomas J. Perrett. Gallai's path decomposition conjecture for graphs of small maximum degree. *Discret. Math.*, 2019, 342 (5), pp.1293–1299. 10.1016/j.disc.2019.01.005 . hal-02527061

HAL Id: hal-02527061

<https://hal.science/hal-02527061>

Submitted on 21 Oct 2021

HAL is a multi-disciplinary open access archive for the deposit and dissemination of scientific research documents, whether they are published or not. The documents may come from teaching and research institutions in France or abroad, or from public or private research centers.

L'archive ouverte pluridisciplinaire **HAL**, est destinée au dépôt et à la diffusion de documents scientifiques de niveau recherche, publiés ou non, émanant des établissements d'enseignement et de recherche français ou étrangers, des laboratoires publics ou privés.



Distributed under a Creative Commons Attribution - NonCommercial 4.0 International License

Gallai's path decomposition conjecture for graphs of small maximum degree

Marthe Bonamy* and Thomas J. Perrett†

~~Gallai's path decomposition conjecture for graphs of small maximum degree~~

Abstract

Gallai's path decomposition conjecture states that the edges of any connected graph on n vertices can be decomposed into at most $\lceil \frac{n+1}{2} \rceil$ paths. We confirm that conjecture for all graphs with maximum degree at most five.

1 Introduction

A *decomposition* \mathcal{D} of a graph G is a collection of subgraphs of G such that each edge belongs to precisely one graph in \mathcal{D} . A *path decomposition* is a decomposition \mathcal{D} such that every subgraph in \mathcal{D} is a path. If G has a path decomposition \mathcal{D} such that $|\mathcal{D}| = k$, then we say that G can be *decomposed* into k paths. In answer to a question of Erdős, Gallai conjectured the following, see [4].

Conjecture 1.1. [4] *Every connected graph on n vertices can be decomposed into $\lceil \frac{n}{2} \rceil$ paths.*

Gallai's conjecture is easily seen to be sharp: If G is a graph in which every vertex has odd degree, then in any path decomposition of G each vertex must be the endpoint of some path, and so at least $\lceil \frac{n}{2} \rceil$ paths are required. Lovász [4] proved that every graph on n vertices has a decomposition \mathcal{D} consisting of paths and cycles, and such that $|\mathcal{D}| = \lceil \frac{n}{2} \rceil$. By an argument similar to the above, it follows that in a graph with at most one vertex of even degree, such a decomposition must be a path decomposition. Thus, Gallai's conjecture holds for all graphs with at most one vertex of even degree.

Let G_E denote the subgraph of G induced by the vertices of even degree. Building on Lovász's result, Conjecture 1.1 has been proved for several classes of graphs defined by imposing some structure on G_E . The first result of this kind was obtained by Pyber [1].

Theorem 1.1. [1] *If G is a graph on n vertices such that G_E is a forest, then G can be decomposed into $\lceil \frac{n}{2} \rceil$ paths.*

Later, Theorem 1.1 was strengthened by Fan [2], who proved the following.

Theorem 1.2. [2] *If G is a graph on n vertices such that each block of G_E is a ~~triangle-free~~ triangle-free graph of maximum degree at most 3, then G can be decomposed into $\lceil \frac{n}{2} \rceil$ paths.*

*CNRS, LaBRI, Université de Bordeaux, France

†Technical University of Denmark, Denmark

Gallai's conjecture is also known to hold for a variety of other graph classes. In 1988, Favaron and Koudier [6] proved that the conjecture holds for graphs where the degree of every vertex is either 2 or 4. More recently, Botler and Jiménez [3] proved that the conjecture holds for $2k$ -regular graphs of large girth and admitting a pair of disjoint perfect matchings. Jiménez and Wakabayashi [7] showed that the conjecture holds for a subclass of planar, triangle-free graphs satisfying a distance condition on the vertices of odd degree. Finally, it was shown by Geng, Fang and Li [5], that the conjecture holds for maximal outerplanar graphs. In this article, we prove that Gallai's conjecture holds for the class of graphs with maximum degree at most 5.

Theorem 1.3. *Let G be a connected graph on n vertices. If $\Delta(G) \leq 5$, then G admits a path decomposition into $\lceil \frac{n}{2} \rceil$ paths.*

To prove Theorem 1.3, we show that if G is a smallest counterexample, then G cannot contain ~~one any~~ of 5 ~~configurations~~ given configurations (Lemma 3.1). This restriction is enough to show that G_E is a forest (Lemma 3.2), whence the result follows by Theorem 1.1. It seems that proving Theorem 1.3 for graphs of maximum degree 6 will require some new ideas. However, we think the approach of considering graphs of bounded maximum degree allows step-by-step improvements which ~~could may~~ eventually lead to a general solution.

In proving special cases of Conjecture 1.1, the presence of a ceiling in the bound brings with it a number of technical complications. It is therefore tempting to explore ways of proving a stronger, ceiling-free version except in a few special cases. We say a graph is an *odd semi-clique* if it is obtained from a clique on $2k + 1$ vertices by deleting at most $k - 1$ edges. By a simple counting argument, we can see that an odd semi-clique on $2k + 1$ vertices does not admit a path decomposition into k paths. It is natural to ask if these are the only obstructions:

Question 1.1. *Does every connected graph G that is not an odd semi-clique admit a path decomposition into $\lfloor \frac{|V(G)|}{2} \rfloor$ paths?*

2 ~~Definitions and notation~~ Background

All graphs in this article are finite and simple, that is, they contain no loops or multiple edges. We say that a path decomposition \mathcal{D} of a graph G is *good* if $|\mathcal{D}| \leq \lceil \frac{|V(G)|}{2} \rceil$.

In figures we make use of the following conventions: Solid black circles denote vertices for which all incident edges are depicted. White hollow circles denote vertices which may have other, undepicted incident edges. Vertices containing a number indicate a vertex of that specific degree. A dotted line between two vertices indicates that those vertices are non-adjacent. We often use component as a shortcut for connected component.

We will often modify a path decomposition of a graph G to give a path decomposition of another graph G' . To describe these modifications we use a number of fixed expressions, which we formally define here. Let \mathcal{D} be a path decomposition of G . Let $P \in \mathcal{D}$ be a path and Q be a subpath of P . If R is a path in G' with the same end vertices as PQ , we say that we *replace* Q with R to mean that we define a new path $P' = P - Q + R$ and redefine \mathcal{D} to be the collection $\mathcal{D} - P + P'$. If R is a path in G' with an endpoint in common with P , we say that we *extend* P with R to mean that we define a new path $P' = P + R$ and redefine \mathcal{D} to be the collection $\mathcal{D} - P + P'$. For a vertex u on

P , we say that we *split* P at u to mean that we define paths P_1 and P_2 such that $P_1 \cup P_2 = P$ and $P_1 \cap P_2 = u$, and redefine \mathcal{D} to be the collection $\mathcal{D} - P + P_1 + P_2$. Finally, for a path R in G' , we say that we *add* the path R to mean that we redefine \mathcal{D} to be the collection $\mathcal{D} + R$. Given a graph G and two disjoint sets A and B of vertices of G , we denote by $E(A, B)$ the set of edges with one endpoint in A and the other in B .

By simple arithmetic, we can obtain the three propositions below.

Proposition 2.1. *Let G and G' be two graphs such that $|V(G)| \geq |V(G')| + 2$, and let \mathcal{D} be a path decomposition of G . If there is a good path decomposition \mathcal{D}' of G' and $|\mathcal{D}| \leq |\mathcal{D}'| + 1$, then \mathcal{D} is a good path decomposition of G .*

~~Let $|V(G)| = n$. We have $|\mathcal{D}| \leq |\mathcal{D}'| + 1 \leq \lceil \frac{n-2}{2} \rceil + 1 = \lceil \frac{n}{2} \rceil$. Thus \mathcal{D} is a good path decomposition of G .~~

Proposition 2.2. *Let G , G_1 and G_2 be three graphs such that $|V(G)| \geq |V(G_1)| + |V(G_2)|$, and let \mathcal{D} be a path decomposition of G . If there are good path decompositions \mathcal{D}_1 and \mathcal{D}_2 of G_1 and G_2 (respectively) and $|\mathcal{D}| \leq |\mathcal{D}_1| + |\mathcal{D}_2| - 1$, then \mathcal{D} is a good path decomposition of G .*

~~Let G, G_1 and G_2 have n, n_1 and n_2 vertices respectively. We have $|\mathcal{D}| \leq |\mathcal{D}_1| + |\mathcal{D}_2| - 1 \leq \lceil \frac{n_1}{2} \rceil + \lceil \frac{n_2}{2} \rceil - 1 \leq \lceil \frac{n}{2} \rceil$. Thus \mathcal{D} is a good path decomposition of G .~~

Proposition 2.3. *Let G , G_1 and G_2 be three graphs such that $|V(G)| \geq |V(G_1)| + |V(G_2)| + 1$, and let \mathcal{D} be a path decomposition of G . If there are good path decompositions \mathcal{D}_1 and \mathcal{D}_2 of G_1 and G_2 (respectively) and $|\mathcal{D}| \leq |\mathcal{D}_1| + |\mathcal{D}_2|$, then \mathcal{D} is a good path decomposition of G .*

~~Let G, G_1 and G_2 have n, n_1 and n_2 vertices respectively. We have $|\mathcal{D}| \leq |\mathcal{D}_1| + |\mathcal{D}_2| \leq \lceil \frac{n_1}{2} \rceil + \lceil \frac{n_2}{2} \rceil \leq \lceil \frac{n}{2} \rceil$. Thus \mathcal{D} is a good path decomposition of G .~~

3 Main Result

Let G be a graph with $\Delta(G) \leq k$. We first prove that a number of configurations are reducible in G , if, that is, if G contains one of them and Gallai's conjecture holds for all smaller graphs of maximum degree k , then Gallai's conjecture holds for G .

Lemma 3.1. *Let $k \in \mathbb{N}$. Let G be a connected graph with maximum degree $\Delta(G) \leq k$, and suppose that G does not admit a good path decomposition. If G is vertex minimal with these properties, then G does not contain any of the following configurations (see Figure 1):*

C_1 : A vertex of degree 2 whose neighbours are not adjacent.

C_2 : A cut-edge uv such that $d(u)$ and $d(v)$ are even.

C_3 : An edge uv such that $d(u) = d(v) = 4$, and u and v have precisely 2 common neighbours, ~~and $d(u) = d(v) = 4$.~~

C_4 : An edge uv such that $d(u) = d(v) = 4$, and for t_1, t_2, t_3 (resp. w_1, w_2, w_3) ~~the three other neighbours~~ neighbours of u (resp. v), the pairs t_1t_2 and w_1w_2 are not edges and $t_3 \neq w_3$.

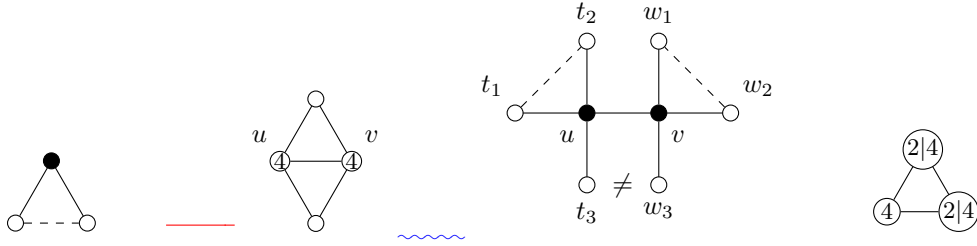


Figure 1: Configurations C_1 , C_3 , C_4 and C_5 from Lemma 3.1.

C_5 : A triangle uvw such that $d(u) = 4$ and $d(v), d(w) \in \{2, 4\}$.

Proof.

Claim 1. G does not contain the configuration C_1 .

Proof. Suppose that the claim is false. Let u be the vertex of degree 2 with $N(u) = \{v, w\}$, and let G' be the graph $G - u + vw$. Since v and w are non-adjacent in G , G' is a simple graph. By the minimality of G , we have that G' admits a good path decomposition \mathcal{D}' . By Proposition 2.3, we obtain a good path decomposition of G by replacing the edge vw with the path vuw (see Figure 2).

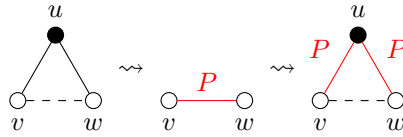


Figure 2: The reduction of C_1 .

This contradicts the assumption that G has no such decomposition. \diamond

Claim 2. G does not contain the configuration C_2 .

Proof. Suppose that the claim is false. Deleting uv from G results in two connected graphs G_1 and G_2 , containing u and v respectively. By the minimality of G , both G_1 and G_2 admit good path decompositions \mathcal{D}_1 and \mathcal{D}_2 . To obtain a path decomposition of G , note that, since u has odd degree in G_1 , there is a path $P_u \in \mathcal{D}_1$ ending at u . Similarly, there is a path $P_v \in \mathcal{D}_2$ ending at v . Now let \mathcal{D} be the path decomposition of G formed by taking the union $\mathcal{D}_1 \cup \mathcal{D}_2$, deleting P_u and P_v , and adding a new path $P = P_u + uv + P_v$ (see Figure 3). By Proposition 2.2, \mathcal{D} is a good path decomposition of G , a contradiction.

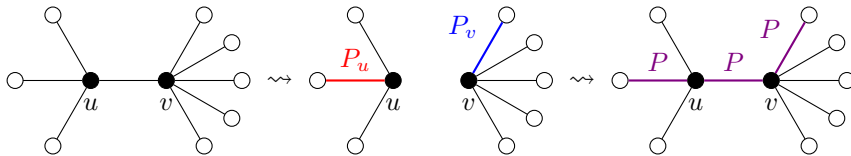


Figure 3: The reduction of C_2 .

◇

Claim 3. G does not contain the configuration C_3 .

Proof. Suppose that the claim is false. Let uv be the edge stated in Configuration C_3 , and let x and y be the two common neighbours of u and v . Since $d(u) = d(v) = 4$, both u and v have precisely one other neighbour. Let these vertices be more neighbour, say u' and v' respectively. Since u and v have precisely two common neighbours, we have that, respectively, where $u' \neq v'$.

Suppose first that at most one of the edges $xu', u'y, yv', v'x$ is present in G , say xu' . If $G - u - v$ is connected, then let G' be the graph $G - u - v + u'y + v'x$. Otherwise, let $G' = G - u - v + u'y + v'x + xy$. Note that G' is connected, and so by the minimality of G , it admits a good path decomposition. Now, replace $v'x$ by $xv'v'vx$ and replace $u'y$ by $u'uy$. Furthermore, if $xy \in E(G') \setminus E(G)$, then replace xy by $xuvy$. Otherwise, add a new path $xuvy$ to the decomposition. By Proposition 2.1, and since we add-added at most one new path, the resulting decomposition is a good path decomposition of G . This contradicts the assumption that G has no such decomposition.

Next, suppose that $xu', u'y, yv', v'x \in E(G)$, so the graph $G' = G - u - v$ is connected. By the minimality of G , the graph G' has a good path decomposition. Now replace the edge xu' with the path $xvuu'$, and add a new path $u'xuyvv'$ to the decomposition. By Proposition 2.1, and since we add-added at most one new path, the resulting decomposition is a good path decomposition of G , contradicting the assumption.

Finally, suppose that precisely two or three of the edges $xu', u'y, yv', v'x$ are present in G . As a consequence, from the set $\{xu', u'y, yv', v'x\} \setminus E(G)$, we may choose an edge, xu' say, such that the graph $G' = G - u - v + xu'$ is connected. By the minimality of G , the graph G' has a good path decomposition. Now replace xu' by $xvuu'$, and add a new path $xuyvv'$ to the decomposition. Again, by Proposition 2.1, and since we add-added at most one new path, the resulting decomposition is a good path decomposition of G , contradicting the assumption.

◇

Claim 4. G does not contain the configuration C_4 .

Proof. Suppose that the claim is false. Since G does not contain Configuration C_3 , the vertices u and v do not have precisely two common neighbours. First suppose that u and v have 3 common neighbours x, y and z . In this case, since there is a pair of non-adjacent vertices amongst $N(u) \setminus \{v\}$, we may assume $xy \notin E(G)$. Furthermore, by the definition of Configuration C_4 , the third vertex z is non-adjacent to at least one of x or y . We conclude that there are two non-edges amongst x, y and z , say these are xy and yz ; say $yz \notin E(G)$. Let G' be the graph $G - u - v + xy + yz$. It is easy to see that G' is connected. By the minimality of G , the graph G' has a good path decomposition. In this decomposition, replace xy by xuy and replace yz by yvz . Finally, add a new path $xvuz$ (see Figure 4). This gives a good path decomposition of G , a contradiction. We may thus assume that u and v have at most one common neighbour.

We now consider three cases depending on the structure of $G - \{u, v\}$. In each case we assume the previous ones do not apply (up to symmetry).

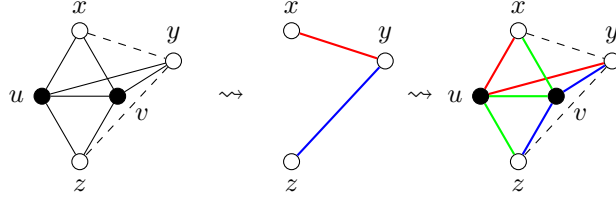


Figure 4: The reduction of C_4 in the case where u and v have three common neighbors.

1. Assume that $G - u$ has at least three connected components. Because uv is not a cut-edge, the component of $G - u$ containing v contains at least one other neighbor of u . Thus $G - u$ has precisely three components, and t_1 and t_2 lie in different components of $G - u$. Let G' be the graph formed from $G - u$ by adding the edge t_1t_2 . Thus G' has two components G_1 and G_2 , and by the minimality of G , both have good path decompositions \mathcal{D}_1 and \mathcal{D}_2 . Without loss of generality we suppose G_2 contains v . Let $P \in \mathcal{D}_1$ be the path containing the edge t_1t_2 . Furthermore, let P_1 and P_2 be the possibly empty subpaths of $P - t_1t_2$ containing t_1 and t_2 respectively. Note that since v has degree 3 in G' , there is some path $Q \in \mathcal{D}_2$ which ends at v . We construct a path decomposition of G by taking the union $\mathcal{D}_1 \cup \mathcal{D}_2$ and replacing P and Q with the paths $P_1 + t_1uv + Q$ and $P_2 + t_2ut_3$. By Proposition 2.3, and since we introduced no new did not increase the number of paths, the resulting path decomposition is good, a contradiction.
2. Assume that $G - \{u, v\}$ has at least four connected components. Since both $G - u$ and $G - v$ have at most two connected components, there are precisely four connected components C_1, C_2, C_3 and C_4 H_1, H_2, H_3 and H_4 . Furthermore, two of these components contain both a neighbour of u and a neighbour of v , one component contains only a neighbour of u , and one component contains only a neighbour of v . Relabeling if necessary, we may suppose that $t_1, w_1 \in C_1, t_2, w_2 \in C_2, t_3 \in C_3$ and $w_3 \in C_4$ $t_1, w_1 \in H_1, t_2, w_2 \in H_2, t_3 \in H_3$ and $w_3 \in H_4$. This relabelling preserves the fact that $t_1t_2, w_1w_2 \notin E(G)$ $t_1t_2, w_1w_2 \notin E(G)$ and $t_3 \neq w_3$. Consider the graph G_1 obtained from C_1 and C_2 H_1 and H_2 by adding the edges t_1t_2 and w_1w_2 . Similarly, consider the graph G_2 obtained from C_3 and C_4 H_3 and H_4 by adding the edge t_3w_3 . By the minimality of G , we obtain good path decompositions of G_1 and G_2 , which we merge in the obvious way. The edge t_1t_2 is replaced with t_1ut_2 , w_1w_2 with w_1vw_3 , and t_3w_3 with t_3vw_3 to obtain a path decomposition of G . By Proposition 2.3, this yields a good path decomposition of G .
3. Now $G - \{u, v\}$ has at most three connected components, and each of $G - u$ and $G - v$ has at most two connected components. Let $T = \{t_1, t_2, t_3\}$ and $W = \{w_1, w_2, w_3\}$. We claim that we can relabel the vertices in T and W such that the graph $G - u - v + t_1t_2 + w_1w_2$ is connected and the properties that $t_1t_2, w_1w_2 \notin E(G)$ $t_1t_2, w_1w_2 \notin E(G)$ and $t_3 \neq w_3$ are preserved. Indeed if u and v have a common neighbour, let $t \in T$ and $w \in W$ be such that $t = w$. Otherwise, let $t = t_1$ and $w = w_1$. Suppose first that t and w lie in the same component of $G - u - v$. Since $G - u - v$ has at most 3 components, and $G - u$ and $G - v$ have at most 2 components, there are non edges tt' and ww' for some $t' \in T$ and $w' \in W$

such that $G - u - v + tt' + ww'$ is connected. Furthermore, since t and w are the only possible common neighbours of u and v , we have that the single vertices in $T \setminus \{t, t'\}$ and $W \setminus \{w, w'\}$ are not equal. Thus, letting $t_1 = t$, $t_2 = t'$, $w_1 = w$, $w_2 = w'$ and setting t_3 and w_3 to be the remaining vertices gives the desired relabeling.

Suppose now that t and w lie in different components of $G - u - v$. In particular this implies that $T \cap W = \emptyset$. Again, since $G - u - v$ has at most 3 components, and $G - u$ and $G - v$ have at most 2 components, there are non-edges e_T and e_W amongst the vertices of T and W respectively, such that $G - u - v + e_T + e_W$ is connected. We relabel the vertices in T and W such that t_1 and t_2 are the endpoints of e_T , w_1 and w_2 are the endpoints of e_W , and t_3 and w_3 are the remaining vertices. Since $T \cap W = \emptyset$, we have that $t_3 \neq w_3$ ~~are as~~ required.

Let G' be the graph obtained from $G - \{u, v\}$ by adding the edges t_1t_2 and w_1w_2 . By the argument above, G' is connected, and so by the minimality of G , there is a good path decomposition of G' . We obtain a path decomposition of G by replacing t_1t_2 with t_1ut_2 and w_1w_2 with w_1vw_2 , and adding the path t_3uvw_3 . Note that since $t_3 \neq w_3$ the latter is really a path. By Proposition 2.1, and since we ~~add~~ added at most one new path, this yields a good path decomposition of G .

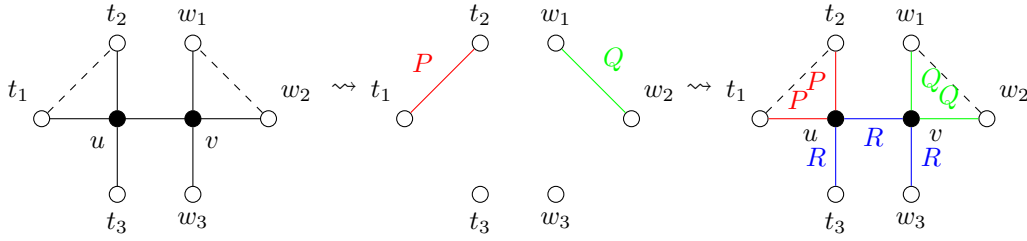


Figure 5: The reduction of C_4 in the connected case.

◇

Claim 5. G does not contain the configuration C_5 .

Proof. We first consider the case where a pair in $\{u, v, w\}$, say $\{u, v\}$, has three common ~~neighbors~~ neighbours. Let x and y be the two ~~neighbors~~ neighbours of $\{u, v\}$ besides w . We argue that wxy induces a triangle. Indeed, first assume there are at least two edges missing, say $xw, wy \notin E(G)$. Consider the graph $G'' = G + xw + wy$, $G'' = G - u - v + xw + wy$, note that it is connected, and consider a good path decomposition of it. We obtain a path decomposition of G by replacing the edge xw with xuw , replacing the edge wy with wvy , and adding the path $xvuy$, see Figure 6. By Proposition 2.1, this yields a good path decomposition of G .

Assume now that there is precisely one edge missing, say the edge xy . Consider G' , the graph obtained from $G - \{u, v\}$ by adding the edge xy . If G' is connected, then by the minimality of G , it has a good path decomposition. From this, we obtain a path decomposition of G by replacing the edge xy with $xvuy$ and adding the path $xvwuy$, see Figure 7. By Proposition 2.1, this yields a good path decomposition of G .

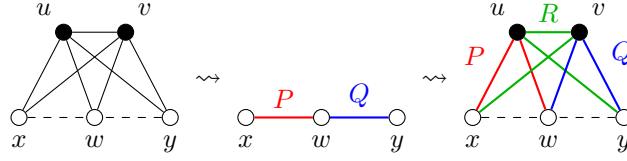


Figure 6: The reduction of C_5 when u and v have three common neighbors-neighbours that induce at least two non-edges.

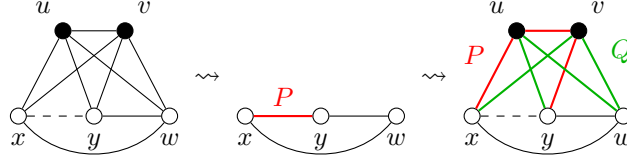


Figure 7: The reduction of C_5 when u and v have three common neighbors-neighbours that induce precisely one non-edge.

Therefore x, y and w induce a triangle. Let $G' = G - \{u, v\}$, and note that G' is connected. Thus, by the minimality of G , the graph G' admits a good path decomposition \mathcal{D}' . We obtain a path decomposition of G as follows: First assume without loss of generality that xy and wy do not belong to the same path of \mathcal{D}' . Let Q' be the path of \mathcal{D}' containing the edge xw , and $Q = Q' - xw + xu$. We consider $\mathcal{D}'' = \mathcal{D}' - Q' + Q$. Let P' be the path of \mathcal{D}'' containing the edge xy . We write $P' = P'_1 + xy + P'_2$, where P'_1 and P'_2 may be empty paths. Set $P_1 = P'_1 + xyvw$ and $P_2 = P'_2 + ywvx$. Note that P_1 and P_2 are paths even if P'_1 also contains the edge xu or in other words $P'_1 = Q$. Finally, let R' be the path of \mathcal{D}'' containing the edge yw , and set $R = R' + wu$. Remember that we assumed $P' \neq R'$. We note that $\mathcal{D} = \mathcal{D}'' - P' - R' + P_1 + P_2 + R$ is a path decomposition of G , with precisely one more path than \mathcal{D}' , see Figure 8. Thus \mathcal{D} is a good path decomposition by Proposition 2.1, a contradiction. Therefore no pair in $\{u, v, w\}$ has three common neighbors-neighbours.

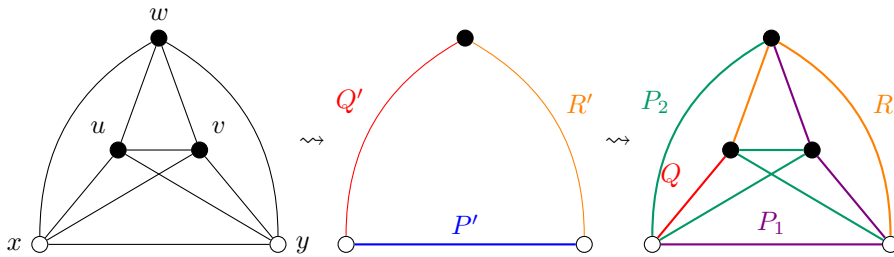


Figure 8: The reduction of C_5 when u and v have three common neighbors-neighbours that induce a triangle. We assume P' and R' are distinct, though Q' might be the same as R' or P' or be altogether distinct from both.

Now, since $d(u), d(v), d(w) \leq 4$ and by Claim 3, we conclude that no pair of vertices in $\{u, v, w\}$ has a common neighbor-neighbour other than the third vertex. If they exist, let $\{x_1, x_2\}$, $\{y_1, y_2\}$ and $\{z_1, z_2\}$ be the two other neighbors-neighbours of u, v and w respectively. We consider three cases.

1. Assume first that one of v and w has degree 2, say $d(v) = 2$. Let G' be the graph obtained from $G - v$ by contracting the edge uw . Note that G' is connected and $|V(G')| = |V(G)| - 2$. By the minimality of G , there is a good path decomposition \mathcal{D}' of G' . To obtain a path decomposition of G , we consider two cases depending on whether ux_1 and ux_2 belong to the same path in \mathcal{D}' , see Figures 9 and 10. If they do not, then replace ux_1 with the path wux_1 , and replace ux_2 with the path $wvux_2$. However, if ux_1 and ux_2 belong to the same path $P \in \mathcal{D}'$, then split P at u into two paths P_1 and P_2 . Extend P_1 with the edge uw and extend P_2 with the path uvw . Note that no edge incident to w is in P_1 or P_2 . By Proposition 2.1, and since we created at most one new path, this yields a good path decomposition of G .

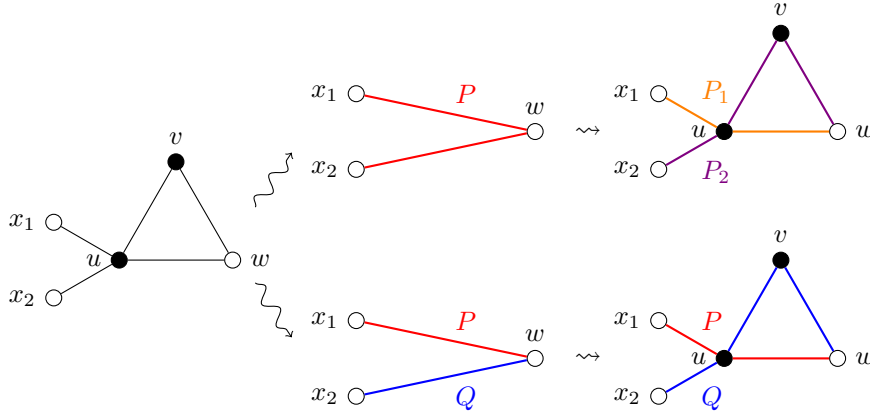


Figure 9: The reduction of C_5 when u and w have precisely one common ~~neighbor~~neighbour and $d(v) = 2$.

2. Assume that one of the edges $ux_1, ux_2, vy_1, vy_2, wz_1, wz_2, ux_1, ux_2, vy_1, vy_2, wz_1, wz_2$ is not a cut-edge. Assume without loss of generality that ux_1 is such an edge. Let G' be the graph obtained from $G - u$ by contracting the edge vw to a vertex s , and adding the edge sx_2 . Note that G' is connected and $|V(G')| = |V(G)| - 2$, so by the minimality of G , there is a good path decomposition \mathcal{D}' of G' .

We obtain a path decomposition of G as follows. We first replace any subpath of the form ysz , $y \in \{y_1, y_2\}$, $z \in \{z_1, z_2\}$ with $yvwz$ (preferably) or with $yvuwz$ (if there are two such subpaths). We then replace any subpath of the form x_2st , $t \in \{y_1, y_2, z_1, z_2\}$, with x_2urt where r is the vertex of $\{v, w\}$ adjacent to t . We replace any remaining edge of the form ts , $t \in \{x_2, y_1, y_2, z_1, z_2\}$ with tr , where r is the vertex of $\{u, v, w\}$ adjacent to t . Let \mathcal{D}'' be the resulting collection of disjoint paths in G . Note that since $d(s) = 5$, there is a path P in \mathcal{D}'' that ends in s , thus a path P' in \mathcal{D}'' that ends in $r \in \{u, v, w\}$. We consider the set of edges of G that do not belong to a path in \mathcal{D}'' . If that set does not induce a path, then we extend P' to wu or wv . Note that this guarantees the only remaining edges induce a path Q , which we add to the path collection. By Proposition 2.1, and since we added at most one new path, this yields a good path decomposition of G .

3. Now $d(u) = d(v) = d(w) = 4$ and every edge with precisely one endpoint in $\{u, v, w\}$ is a cut-edge. Consider the graph G' obtained from $G - \{u, v, w\}$ by adding the three edges

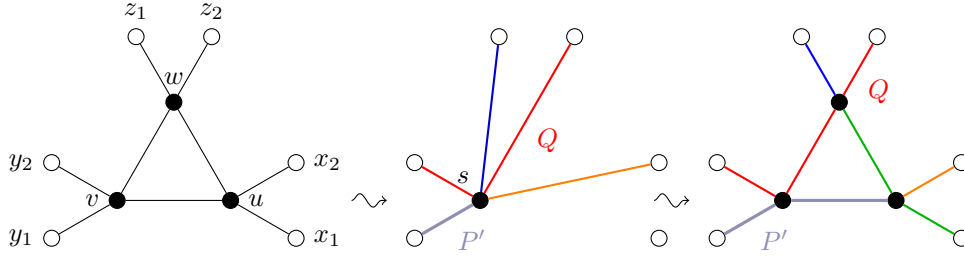


Figure 10: An example of the reduction of C_5 when $d(u) = d(v) = d(w) = 4$, the triangle (u, v, w) is adjacent to no other triangle and some edge in $E(\{u, v, w\}, \{x_1, x_2, y_1, y_2, z_1, z_2\})$ is not a cut-edge.

x_1y_1 , x_2y_2 and z_1z_2 . Note that G' has precisely three connected components G_1, G_2 , and G_3 . By the minimality of G , there are good path decompositions of G_1, G_2 and G_3 . We obtain a path decomposition of G by replacing x_1y_1 with the path x_1uvy_1 , replacing x_2y_2 with x_2uwvy_2 , and replacing z_1z_2 with the path z_1wz_2 (see Figure 11). These paths are all distinct since the edges x_1y_1 , x_2y_2 and z_1z_2 belong to different components of G' . Note that the total number of paths involved in the resulting path decomposition of G is at most $\frac{|V(G_1)|+1}{2} + \frac{|V(G_2)|+1}{2} + \frac{|V(G_3)|+1}{2} = \frac{|V(G)|}{2}$, thus it is a good path decomposition.

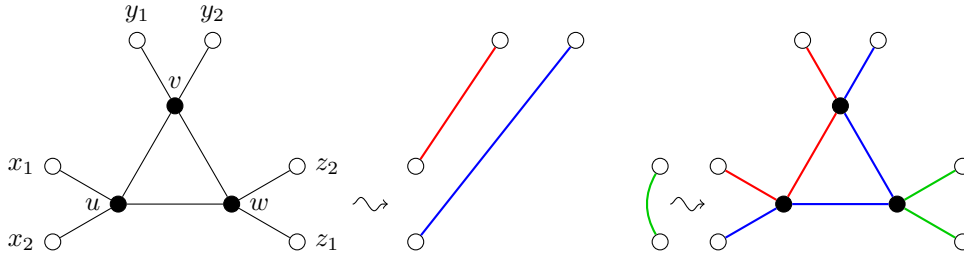


Figure 11: The reduction of C_5 when $d(u) = d(v) = d(w) = 4$, the triangle (u, v, w) is adjacent to no other triangle and every edge in $E(\{u, v, w\}, \{x_1, x_2, y_1, y_2, z_1, z_2\})$ is a cut-edge.

◇

By Claims 1, 2, 3, 4 and 5, the ~~lemma statement holds~~[proof of Lemma 3.1 is complete](#). □

Recall that G_E denotes the graph induced ~~on~~[by](#) the vertices of even degree in G .

Lemma 3.2. *Let G be a connected graph such that $G \notin \{K_3, K_5\}$. If $\Delta(G) \leq 5$ and G does not contain ~~configurations~~[Configurations](#) C_1, \dots, C_5 , then the graph G_E is a forest.*

Proof. Let $H = G_E$ and suppose for a contradiction that H contains a cycle C . Suppose further that there is $v \in V(C)$ with ~~$d(v) = 2$~~ [\$d_G\(v\) = 2\$](#) , and let $N(v) = \{u, w\}$. Since C is a cycle in H , we have that ~~$d(u), d(w) \in \{2, 4\}$~~ [\$d_G\(u\), d_G\(w\) \in \{2, 4\}\$](#) . Furthermore, since G does not contain ~~configuration~~[Configuration](#) C_1 , we have that $uw \in E(G)$. Now $G \neq K_3$, so at least one of u and w has degree 4 ~~in G~~ . It follows that ~~u, v, u, v~~ [and \$w\$](#) form ~~configuration~~[Configuration](#) C_5 , a contradiction. Thus, if C is a cycle in H , then $d_G(v) = 4$ for all vertices $v \in V(C)$. Since G does not contain ~~configuration~~[Configuration](#) C_5 , it immediately follows that $|C| > 3$.

Let uv be an edge of C . Let t_1, t_2, t_3 be the neighbours of u apart from v and let w_1, w_2, w_3 be the neighbours of v apart from u . Note that, since uv is an edge of C , at least one of t_1, t_2, t_3 has degree 4. Similarly, at least one of w_1, w_2, w_3 has degree 4. Now, u and v do not have 3 common neighbours, since otherwise G contains Configuration C_5 , a contradiction. Furthermore, since G does not contain Configuration C_3 , the vertices u and v have at most one common neighbour. Thus, in what follows, we allow the possibility that $t_1 = w_1$, but always assume that $t_2, t_3 \notin \{w_1, w_2, w_3\}$ and $w_2, w_3 \notin \{t_1, t_2, t_3\}$.

Suppose first that $t_1 t_2 \notin E(G)$. We first argue that $\{t_1, t_2, t_3\}$ does not induce a clique. Assume by contradiction that $\{t_1, t_2, t_3\}$ induces a clique. One of them has degree 4. Note that since G does not contain Configuration C_4 , we must have that $w_1 w_2, w_2 w_3, w_1 w_3 \in E(G)$. Otherwise, since $t_3 \notin \{w_1, w_2, w_3\}$, we have that G contains Configuration C_4 , a contradiction. But now the vertices w_1, w_2, w_3 form a clique, and at least one of them has Configuration C_5 , we can assume without loss of generality that $d_G(t_2) = 4$. Note that t_2 and u form two adjacent vertices of degree 4. It follows with exactly two common neighbors, since u is adjacent to v and t_2 is not. This is in contradiction with the fact that G does not contain Configuration C_3 , a contradiction.

By symmetry, we obtain that $\{w_1, w_2, w_3\}$ does not induce a clique.

Suppose now that $t_1 t_2 \in E(G)$. Since G does not contain Configuration C_4 , we must have that $w_1 w_2, w_2 w_3, w_1 w_3 \in E(G)$. This contradicts the fact that $\{w_1, w_2, w_3\}$ does not induce a clique.

By symmetry, all of the edges $t_1 t_2, t_1 t_3, w_1 w_2, w_1 w_3 \in E(G)$. As a consequence, $t_1 \neq w_1$, otherwise this vertex would have degree 6, which is larger than $\Delta(G)$. Thus $\{t_1, t_2, t_3\} \cap \{w_1, w_2, w_3\} = \emptyset$. With this extra information, we can repeat the argument above shows that, in fact, if any edge amongst t_1, t_2, t_3 is not in $E(G)$, then w_1, w_2, w_3 induce pair of vertices amongst t_1, t_2, t_3 is not adjacent in G , then $\{w_1, w_2, w_3\}$ induces a clique. Thus, therefore, either $\{t_1, t_2, t_3\}$ or $\{w_1, w_2, w_3\}$ induce a clique, which again gives a contradiction since G does not contain Configuration C_3 .

a contradiction. □

The proof of Theorem 1.3 now follows easily.

Proof of Theorem 1.3. Let G be a smallest counterexample to the theorem. By Lemma 3.1, the graph G does not contain Configurations C_1, \dots, C_5 . Thus, by Lemma 3.2, the graph G_E is a forest. But now G admits a good path decomposition by Theorem 1.1, a contradiction. □

4 Acknowledgements

The authors wish to thank François Dross for useful discussions, and the anonymous reviewers for remarks improving the presentation. The second author was supported by ERC Advanced Grant GRACOL, project number 320812.

References

- [1] L. Pyber, Covering the edges of a connected graph by paths, *J. Combin. Theory Ser. B*, **66** (1996) 152–159.
- [2] G. Fan, Path decompositions and Gallai’s conjecture, *J. Combin. Theory Ser. B*, **93** (2005) 117–125.
- [3] F. Botler and A. Jiménez, On path decompositions of $2k$ -regular graphs, *Electron. Notes Discrete Math.*, **50** (2015) 163–168.
- [4] L. Lovász, On covering of graphs, in: *Theory of Graphs* (ed. P. Erdős, G. Katona), Akad. Kiadó, Budapest (1968) 231–236.
- [5] X. Geng, M. Fang and D. Li, Gallai’s conjecture for outerplanar graphs, *J. Interdiscip. Math.* **18** (2015) 593–598.
- [6] O. Favaron and M. Kouider, Path partitions and cycle partitions of Eulerian graphs of maximum degree 4, *Studia Sci. Math. Hungar.*, **23** (1988) 237–244.
- [7] A. Jiménez and Y. Wakabayashi, On path-cycle decompositions of triangle-free graphs. Preprint.