



HAL
open science

An integrative phylogenomic approach illuminates the evolutionary history of cockroaches and termites (Blattodea)

Dominic A Evangelista, Benjamin Wipfler, Olivier Bethoux, Alexander Donath, Mari Fujita, Manpreet K Kohli, Frédéric Legendre, Shanlin Liu, Ryuichiro Machida, Bernhard Misof, et al.

► To cite this version:

Dominic A Evangelista, Benjamin Wipfler, Olivier Bethoux, Alexander Donath, Mari Fujita, et al.. An integrative phylogenomic approach illuminates the evolutionary history of cockroaches and termites (Blattodea). *Proceedings of the Royal Society B: Biological Sciences*, 2019, 286 (1895), pp.20182076. hal-02521765

HAL Id: hal-02521765

<https://hal.science/hal-02521765>

Submitted on 31 Mar 2020

HAL is a multi-disciplinary open access archive for the deposit and dissemination of scientific research documents, whether they are published or not. The documents may come from teaching and research institutions in France or abroad, or from public or private research centers.

L'archive ouverte pluridisciplinaire **HAL**, est destinée au dépôt et à la diffusion de documents scientifiques de niveau recherche, publiés ou non, émanant des établissements d'enseignement et de recherche français ou étrangers, des laboratoires publics ou privés.

An integrative phylogenomic approach illuminates the evolutionary history of cockroaches and termites (Blattodea)

Dominic A. Evangelista^{1,2,†}, Benjamin Wipfler^{3,4,†}, Olivier Béthoux^{5,6}, Alexander Donath⁷, Mari Fujita⁸, Manpreet K. Kohli⁹, Frédéric Legendre¹, Shanlin Liu¹⁰, Ryuichiro Machida⁸, Bernhard Misof⁷, Ralph S. Peters⁴, Lars Podsiadlowski⁷, Jes Rust¹¹, Kai Schuette¹², Ward Tollenaar¹³, Jessica L. Ware⁹, Torsten Wappler¹⁴, Xin Zhou^{15,16}, Karen Meusemann^{7,17,18} and Sabrina Simon¹³

¹Institut de Systématique, Evolution, Biodiversité (ISYEB), Muséum national d'Histoire naturelle, CNRS, Sorbonne Université, EPHE, 57 rue Cuvier, CP50, 75005 Paris, France

²Department of Ecology and Evolutionary Biology, The University of Tennessee, Dabney Hall, 1416 Circle Dr., Knoxville, TN 37996, USA

³Institut für Spezielle Zoologie und Evolutionsbiologie mit Phyletischem Museum, Friedrich-Schiller Universität Jena, Vor dem Neutor 1, 07743 Jena, Germany

⁴Center for Taxonomy and Evolutionary Research, Zoological Research Museum Alexander Koenig (ZFMK), Adenauerallee 160, 53113 Bonn, Germany

⁵CR2P (Centre de Recherche en Paléontologie – Paris), MNHN – CNRS – Sorbonne Université, UPMC Univ Paris 06, MNHN, CNRS, Paris, France

⁶Muséum national d'Histoire naturelle, 57 rue Cuvier, CP38, 75005 Paris, France

⁷Center for Molecular Biodiversity Research (ZMB), Zoological Research Museum Alexander Koenig (ZFMK), Adenauerallee 160, 53113 Bonn, Germany

⁸Sugadaira Research Station, Mountain Science Center, University of Tsukuba, 1278-294 Sugadaira Kogen, Ueda, Nagano 386-2204, Japan

⁹Federated Department of Biological Sciences, Rutgers, The State University of New Jersey and NJIT, 195 University Ave, Newark, NJ 07102, USA

¹⁰BGI-Shenzhen, Shenzhen 518083, People's Republic of China

¹¹Steinmann-Institute, Institute for Paleontology, University of Bonn, Nussallee 8, 53115 Bonn, Germany

¹²Animal Ecology and Conservation, Zoological Institute, University of Hamburg, Martin-Luther-King-Platz 3, 20146 Hamburg, Germany


¹³Biosystematics Group, Wageningen University and Research, Droevendaalsesteeg 1, 6708 PB Wageningen, The Netherlands

¹⁴Hessisches Landesmuseum Darmstadt, Friedensplatz 1, 64283 Darmstadt, Germany

¹⁵Beijing Advanced Innovation Center for Food Nutrition and Human Health, and ¹⁶Department of Entomology, China Agricultural University, Beijing 100193, People's Republic of China

¹⁷Australian National Insect Collection, CSIRO National Research Collections Australia (NRCA), Acton, Canberra, Australian Capital Territory, Australia

¹⁸Evolutionary Biology and Ecology, Institute for Biology I, University of Freiburg, Hauptstr. 1, 79104 Freiburg (Brsg.), Germany

 BW, 0000-0002-2367-6789; AD, 0000-0001-5618-0547

Phylogenetic relationships among subgroups of cockroaches and termites are still matters of debate. Their divergence times and major phenotypic transitions during evolution are also not yet settled. We addressed these points by combining the first nuclear phylogenomic study of termites and cockroaches with a thorough approach to divergence time analysis, identification of endosymbionts, and reconstruction of ancestral morphological traits and behaviour. Analyses of the phylogenetic relationships within Blattodea robustly confirm previously uncertain hypotheses such as the sister-group relationship between Blaberoidea and remaining Blattodea, and *Lamproblatta* being the closest relative to the social and wood-feeding *Cryptocercus* and termites. Consequently, we propose new names for various clades in Blattodea: *Cryptocercus* + termites = Tutricablattae; Lamproblattidae + Tutricablattae = Kittrickae; and Blattoidea + Corydioidea = Solumblattodea. Our inferred divergence times

contradict previous studies by showing that most subgroups of Blattodea evolved in the Cretaceous, reducing the gap between molecular estimates of divergence times and the fossil record. On a phenotypic level, the blattodean ground-plan is for egg packages to be laid directly in a hole while other forms of oviposition, including ovovivipary and vivipary, arose later. Finally, other changes in egg care strategy may have allowed for the adaptation of nest building and other novelties.

1. Background

A major revelation of systematic entomology in the past decades was the finding that termites (Isoptera) are nested within cockroaches [1,2]. Together, they form the clade Blattodea with approximately 7500 described species [3]. As members of this group are among major dead-wood decomposers and global pests, Blattodea are considered to be ecologically and economically important on the local and global scale; they are important components of many ecosystems, and their dead-wood processing has measurable effects on the global climate, e.g. [4,5].

Although many aspects of Blattodea biology such as morphology [2,6], palaeontology [7,8], biogeography [9], physiology [4,10], and other life-history aspects [4] have been studied, there still remain various open questions. Resolving the phylogeny of Blattodea is of primary concern in this respect because it is the scaffolding for a broader understanding of their evolutionary history.

There is consensus on some phylogenetic relationships within Blattodea. Most studies agree that Blattodea is divided into three monophyletic groups: Blattoidea, Corydioidea, and Blaberoidea. However, relationships among these three groups remain unresolved. Uncertainty on these ancient relationships affects our capacity to address several evolutionary questions, such as the ancestral mode of wing folding and egg deposition. A similar case regards the sister-group to the clade uniting *Cryptocercus* and termites. This strongly supported clade is characterized by wood-feeding and social behaviour [1,2,9]. However, the sister-group to this clade, and with it the evolutionary precursors to sociality and wood-feeding, are unknown. Previous studies proposed *Lamproblatta*, Blattidae, Tryonicidae, Anaplectidae, or a combination of these [9,11,12]. Tryonicidae comprises some wood-feeding species [13], so its position relative to *Cryptocercus* and termites could elucidate the origin of traits related to xylophagy [11,13]. Yet, *Lamproblatta* spp. share some morphological (e.g. derived genital sclerotizations) and behavioural (e.g. ootheca laying sequence) traits with *Cryptocercus* [2,14], but their diet is not xylophagous [15].

Beyond phylogenetic relationships, the timing of the origin of major clades in Blattodea is even more debated [9,11,12,16]. There is a huge gap between the fossil record and the ages that molecular-based divergence time studies propose for Blattodea, an issue admittedly common to many taxa, e.g. [17]. While the results of molecular divergence time analyses suggest that Blattodea is at least 240–180 million years (Myr) old [16], the oldest described crown-Blattodea are approximately 139 Myr old termite fossils [18]. Furthermore, the earliest fossil occurrences of subgroups within Blattodea, such as that of putative Blaberidae in the Palaeogene (66–23 Ma; e.g. [19]), strongly contrasts with dating studies that propose a Cretaceous (145–66 Myr) [9,11,16] or even Jurassic (201–145 Myr) [12] origin.

Finally, crown-Blattodea are relatively young [8,18] compared to the many more ancient insect groups, e.g. beetles, wasps, or dragonflies [20]. However, cockroach-like animals were some of the most abundant animals in Carboniferous ‘coal’ swamps [18]. The positions of these so-called ‘roachoids’ and other controversial fossils are debated. While morphological evidence is needed to determine their precise placement [8,18], improved and reliable divergence time estimates could rule out some proposed positions, e.g. as stem or crown-Blattodea.

Resolving the phylogeny of Blattodea has specific implications for understanding evolution in sociality, morphology, diet, endosymbiosis, or egg laying strategies—aspects that remain controversial or poorly understood in these insects. Social behaviour evolved in a full spectrum ranging from solitary, to aggregating, to biparental care, and to eusociality with a complex caste system [4,21]. Additionally, cockroaches protect their offspring by laying eggs in specialized egg packages, so-called oothecae, which are dropped, buried, or carried around. Evolution of egg incubation strategies in Blattodea resulted in ovipary, ovovivipary, and full vivipary [4,14]. Adaptation to novel diets has also driven Blattodea’s evolution. Most Blattodea are omnivorous detritus feeders [4], a diet with unpredictable and variable nutrient quality. Blattodea’s coevolution with the endosymbiont *Blattabacterium* assist them in coping with this challenge (e.g. [22,23]). This symbiosis was lost at least twice in Blattodea [23] but many lineages have not been surveyed.

We address the above issues in an integrative way by combining the largest available phylogenomic dataset (comprising on average 2370 protein-coding nuclear single-copy genes for 66 species including all major groups of Blattodea except Anaplectidae) with a thorough dating approach and additional analyses related to endosymbionts, morphology, and social behaviour.

2. Methods

(a) Taxon sampling, sequencing, and data processing

We sequenced transcriptomes of 31 species representing all major lineages of Blattodea (except Anaplectidae) and combined these with transcriptome data of 14 Blattodea and 21 outgroup representatives published by Misof *et al.* [20] and Wipfler *et al.* [24]. RNA extraction, cDNA library generation, and paired-end sequencing on Illumina HiSeq 2000 platforms were performed within the 1KITE project, www.1kite.org, see also [20]. Details on sample origin, taxonomic affiliation, National Center for Biotechnology Information (NCBI) accession numbers, wet-laboratory procedures, sequencing and data processing, assembly, contaminant removal, alignment and alignment masking, protein domain identification, and further dataset generation are provided in electronic supplementary material, S1.1. For phylogenetic inference, we optimized and analysed datasets for 66 taxa comprising on average 2370 identified nuclear protein-coding single-copy genes. The final optimized datasets comprised (i) a full nucleotide (nt) dataset including only second codon positions and spanning more than one million sites (1 205 322 nt positions) and (ii) a decisive (*sensu* [25]) amino acid (aa) dataset spanning over half a million sites (585 040 aa positions). Please refer to electronic supplementary material, S1.1 for details.

(b) Phylogenetic inference and topology testing

We inferred phylogenetic trees with a maximum-likelihood (ML) approach as implemented in IQ-TREE (v. 1.4-1.6) [26,27] using the decisive aa dataset (592 partitions of 71 126 amino acid sites) and the full nt dataset (1546 partitions). For details on optimizing

partition schemes and selecting substitution models, see electronic supplementary material, S1.2. The best tree was inferred from each alignment through 50 independent searches with random starting trees. Support was estimated through non-parametric bootstrapping and bootstrap convergence was assessed *a posteriori* using the default setting of the autoMRE stopping criterion [28] as implemented in RAxML v. 8 [29]. The possibility of rogue taxon placement was statistically tested using ROGUE-NAROK [30].

The position recovered for *Anallacta* (as sister-group to Pseudophyllodromiinae) is not in agreement with its morphology-based classification (belonging to Blattellinae). Thus, we further excluded the possibility of erroneous identification or contamination during wet-laboratory procedures by verifying its identity via DNA genetic barcoding and comparative morphology (for details, see electronic supplementary material, S1.3). This confirmed our original identification.

Statistical support for possible alternative topologies was examined for the aa dataset using the approximately unbiased test (AU test; [31]) as implemented in IQ-TREE. In addition, we checked for hidden and putative confounding signal with respect to the position of *Lamproblatta* and Corydioidea with Four-cluster Likelihood Mapping (FcLM; [32]), applying the procedure detailed in [33] for the aa dataset, see [20] for a rationale. Details of phylogenetic inference, bootstrap, bootstrap convergence, analyses for rogue taxa, and all topology tests are given in electronic supplementary material, S1.2 and S1.4.

(c) Divergence time estimation

We surveyed the fossil record and identified nine fossils as valid for time-calibration of Blattodea and outgroup clades strictly following the best practices of fossil calibration [34], see also electronic supplementary material, S2. Selected fossils were: *Protelytron permanium*, *Raphogla rubra*, *Alexrasnia rossica*, *Juramantophasma sinica*, *Qilianiblatta namurensis*, ‘*Gyna*’ *obesa*, *Cretaholocompsa montescana*, *Valditermes brenanae*, and *Archeorhinotermes rossi* (details including authors are provided in electronic supplementary material, figure S5 and table S8). The rationale for each fossil used is provided in electronic supplementary material, S2.1 and summarised in table S8. The ages of above fossils were used as soft minimum bounds for nine nodes on the tree. The age of Rhynie chert (412 Myr) was used as the hard maximum bound for all calibrations, except for one (*Archeorhinotermes rossi* with soft maximum at 237 Myr; see electronic supplementary material, S1.5 for justification). We estimated divergence times with the software MCMCTREE as implemented in PAML v. 4.9 g [35]. Providing our best ML tree from the decisive aa dataset as a fixed input topology, we ran divergence time analysis using (1) a reduced matrix of our decisive aa dataset, containing only aa sites that were unambiguous for at least 95% of taxa (hereafter called the ‘reduced’ dataset) and (2) the decisive aa dataset (hereafter called the ‘unreduced’ dataset). Divergence time analyses were performed on both datasets to examine whether missing data had an impact on estimated divergence times. After generation of Hessian matrices with CODEML, we performed four independent runs for each dataset under the independent rates clock model using uniform priors. We ensured all runs had an effective sample size of more than 200 and converged. Detailed settings, convergence plots, further quality control analyses, and detailed results are provided in electronic supplementary material, S1.5. In the text, we report estimated mean divergence times with half the width of the 95% confidence interval after a ‘ \pm ’ sign.

(d) Analysis of morphological evolution and *Blattabacterium*

We investigated the presence of endocellular mutualists *Blattabacterium* via a reciprocal BLAST approach [36]. We first identified candidate *Blattabacterium* transcripts by differentiating insect

hosts and other non-target symbiont taxa via compiling reference sequences from a wide variety of species and filtering out all best BLAST hits from non-target taxa. We then extracted sequences attributed to *Blattabacterium* by our reference BLAST runs and searched them against the entire NCBI nt database. Taxa with transcripts matching *Blattabacterium* were counted as having the endosymbionts. Additional details are given in electronic supplementary material, S1.6.

We tabulated 20 morphological and behavioural characters from previous publications [2,11,14,37]. Their most parsimonious ancestral states were inferred using the best ML tree derived from the decisive aa dataset and MESQUITE v. 3.3 [38]. We also inferred posterior probability of ancestral states for four of the 20 characters using a Bayesian stochastic character mapping method [39]. Details are provided in electronic supplementary material, S3.

(e) Terminology and taxonomy

We chose a standard set of names to simplify the discussion of phylogenetic relationships and to clarify potentially ambiguous names, see electronic supplementary material, S4. We propose new taxon names for selected clades that are strongly supported in our analyses.

3. Results and discussion

(a) Phylogenetic relationships

The tree topology recovered from the decisive aa data (figure 1) was congruent with the tree inferred from the full nt dataset including second codon positions only (electronic supplementary material, S1 and figure S3) except for the positions of *Mastotermes* and *Zootermopsis*. All other clades in the decisive aa tree had maximal bootstrap support (BS), except for the clade *Diploptera* + *Oxyhaloinae* (90% BS). All but one (see below) additional topology test (electronic supplementary material, S1.4; table S7 and figure S4) also gave maximal support for the decisive aa tree topology (figure 1).

Our results clearly support monophyletic Dictyoptera and Blattodea, with termites + *Cryptocercus* nested within Blattoidea (figure 1). We also recover Blaberoidea and Blaberidae as monophyletic. The high BS, in combination with FcLM and AU tests, show little conflicting signal in the dataset.

Within Blattodea, we find strong support for Blaberoidea being sister to a clade comprising Corydioidea and Blattoidea (figure 1; electronic supplementary material, S1.4). These results agree with the topologies found in previous studies [11,12,37] (figure 1; electronic supplementary material, S1.4), but refute others that have hypothesized that Corydioidea (e.g. [1,16]) or Blattoidea [9] form the sister-group to remaining Blattodea. Based on strong molecular support for this clade in combination with multiple synapomorphies in sexual morphology, we coin the term Solumblattodea for Blattoidea + Corydioidea (see electronic supplementary material, S4 for full systematic treatment and morphological evidence).

Within Blaberoidea, we retrieve a topology not previously recovered by any study, but all relationships are strongly supported by our data (figure 1; electronic supplementary material, S1.4). We support *Ectobius* as sister to all other Blaberoidea [16]. Blattellinae and Nyctiborinae (see [7] and references therein) form the sister-group to Blaberidae [1,2] (morphological arguments provided in [2]). Our study corroborates the hypotheses of [9] that Blattellinae is polyphyletic with respect to *Anallacta*. This is in contrast to [40] in which *Anallacta* was placed within Blattellinae based on morphological

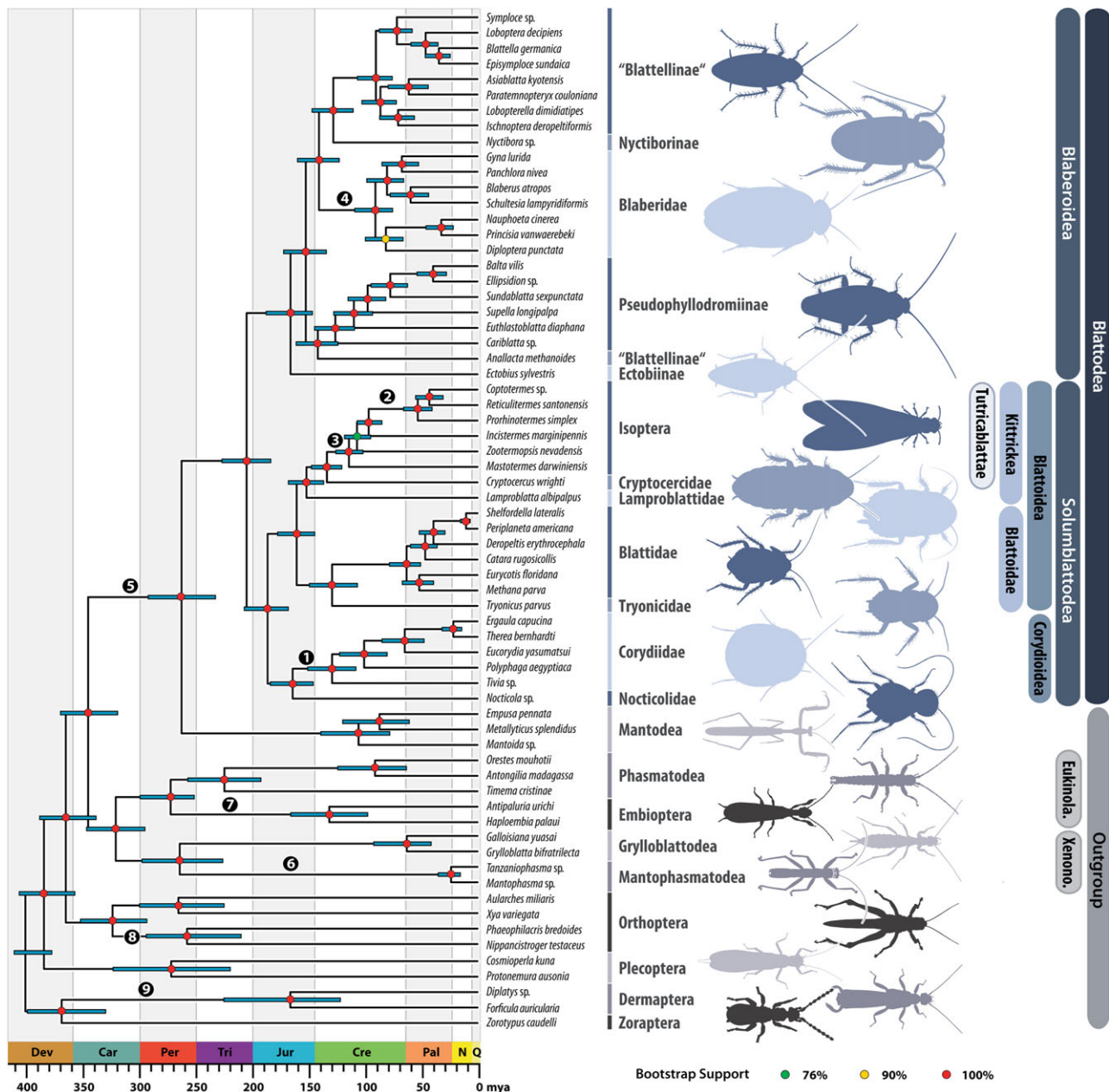


Figure 1. Time-calibrated phylogeny of Blattodea. Topology obtained from ML analysis of the decisive amino acid (aa) dataset (585 040 aa positions). Coloured circles represent BS support. Node dates (posterior mean) were inferred using the decisive aa dataset reduced to sites containing 95% or more data completeness, and nine exhaustively vetted fossil calibrations. Error bars represent 95% confidence intervals. Fossils used for calibrations indicated as numbers in black circles are: 1: *Cretaholocompsa montsecana*; 2: *Archeorhinotermes rossi*; 3: *Valditermes brenanae*; 4: *Gyna obesa*; 5: *Qilianiblatella namurensis*; 6: *Juramantophasma sinica*; 7: *Alexarasnia rossica*; 8: *Raphogla rubra*; 9: *Protelytron permianum*; see also electronic supplementary material, table S8. Abbreviations: 'Eukinola.' = Eukinolabia and 'Xenono.' = Xenonomia.

characters. While Blattellinae and *Anallacta* both have hooked genital phallomere on the left side, other genital morphological characters (shape of L3d and R3d) support our results of *Anallacta* with Pseudophyllodromiinae (see electronic supplementary material, S1.3 for further details). Our topology within Corydioidea (figure 1) is congruent with previous studies [9,11,12,16].

Within Blattoidea, our phylogenomic analysis agrees with the topology of Legendre *et al.* [12] in showing that the neotropical genus *Lamproblatta* is sister to *Cryptocercus* + Isoptera and forms the sister-group to *Tryonicus* + Blattidae. AU and FcLM tests provide further strong support for these relationships (see electronic supplementary material, S1.4). We formally give the name *Kittrickea* to the clade (*Lamproblattidae* + (*Cryptocercus* + Isoptera)), honouring Frances Ann McKittrick

who first proposed this relationship [41] (see electronic supplementary material, S4 for full systematic treatment and synapomorphies).

The sister-group relationship between *Cryptocercus* and Isoptera is well supported (e.g. [1,2]). Our comprehensive phylogenomic dataset, independent from previous ones, confirms *Cryptocercus* + Isoptera with unambiguous support. We thus propose the name *Tutricablattae* (i.e. cockroaches with childcare; electronic supplementary material, S4) for this clade.

The only disagreement between the trees inferred from the decisive aa and full nt datasets is the sister relationship of *Mastotermes* to all other termites in contrast to *Zootermopsis* as sister to all other termites (latter inferred from the nt dataset). Both relationships were not rejected by an AU test (electronic supplementary material, S1.4 and table S7). Still, we consider the

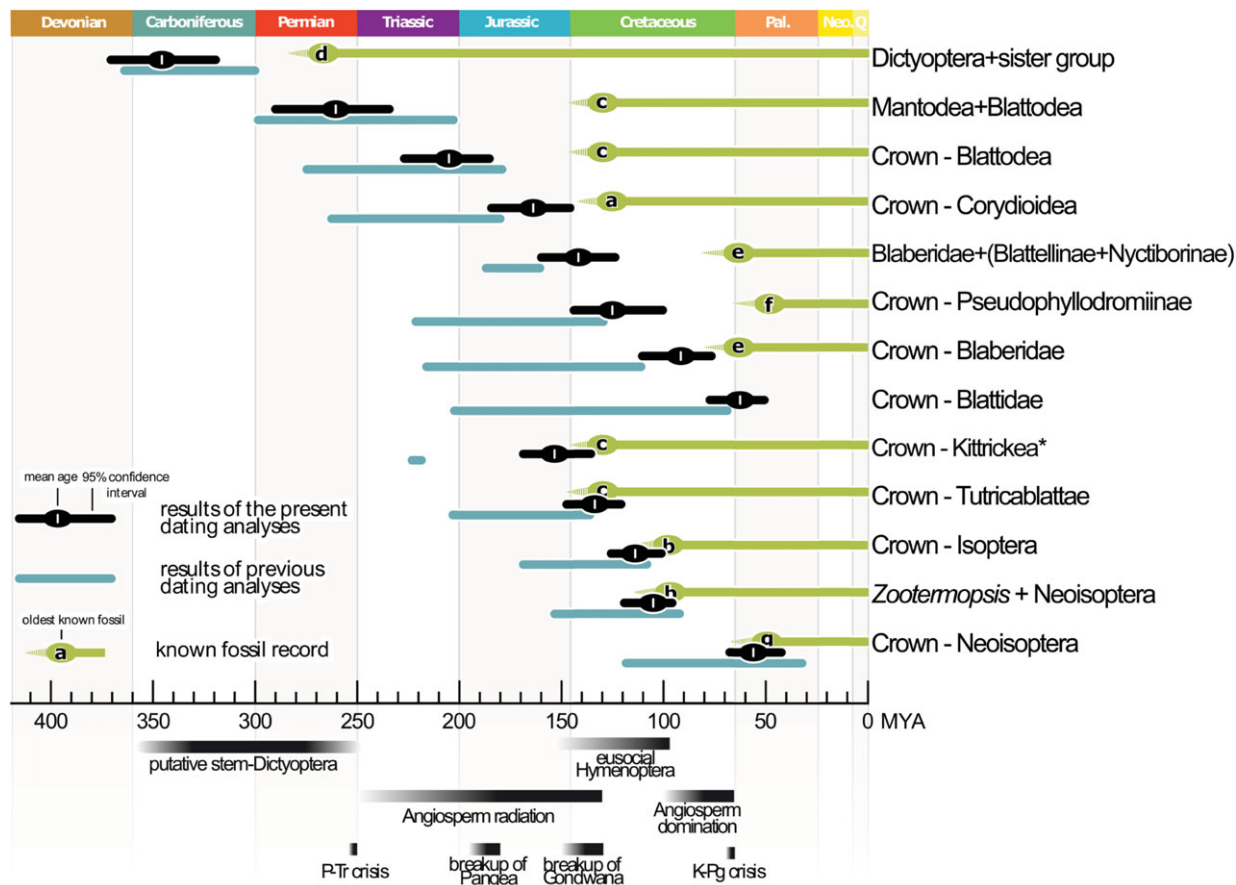


Figure 2. Comparison of divergence times for selected Blattodea lineages retrieved in our study (black bars) with the fossil record (green bars), selected previous studies (blue bars; [9,11,12,16]) and important historical events as mentioned in the text. a: *Cretaholocompsa montsecana*, b: *Archeorhinotermes rossi*, c: *Valditermes breanae*, d: *Qilianiblattea namurensis*, e: *Morphna paleo*, f: *Cariblattoides labandeirai*, g: *Parastylotermes krishnai*. *: Kitrickea was previously only recovered by [12]. Colour gradient bars represent historical events that are fully achieved when the colour is black.

tree inferred from the decisive aa dataset and the inferred sister relationship of *Mastotermes* to all other termites as more reliable because of the decisive aa datasets lower proportion of missing data and greater sequence overlap among taxa of interest (see rationale in electronic supplementary material, S1.1 section 'optimizing datasets'). Furthermore, the position of *Mastotermes* as sister to all remaining termites (figure 1) is widely accepted and supported by many lines of evidence (e.g. [1,2,9]).

Within Blattidae, we support monophyletic Polyzosteriinae and (Blattinae + *Catara rugosicollis*) [9,14], thus contradicting the hypothesis of Legendre *et al.* [12] whose topology is more congruent with biogeographic distribution. Under the latter scenario [12], neotropical Polyzosteriinae are monophyletic while old-world Archiblattinae and Blattinae are closely related to Polyzosteriinae from Oceania. Future studies with larger taxon sampling (i.e. Duchailuiinae, *Pelmatosilpha*, *Angusticonicus s.l.*, other Polyzosteriinae) would be required to finally resolve this question.

(b) Evolutionary history of Blattodea

(i) The timing of Blattodea's origins (electronic supplementary material, S1.6)

In agreement with [12] we vetted fossils according to the criteria of [34]. Additionally, we provide the first approach to divergence time inference of Blattodea that applies (i) a large selection of outgroup fossil calibrations, (ii) considers evolutionary rates inferred from transcriptome-scale sampling of nuclear loci (electronic supplementary material, S1.5), and

(iii) accounts for the effect of missing data on inferred ages. Our analyses showed that excluding sites with less than 95% of terminal taxa resulted in slightly older mean inferred ages (about 5–10 Myr; electronic supplementary material, table S9). This discrepancy is within our margin of error (95% confidence ranges) and similar to discrepancies in other studies [42]. Consequently, missing data inherent in our datasets had a trivial effect on our estimated divergence times.

Inferred from the reduced decisive aa dataset, Blattodea and Mantodea split 263 (± 30) million years ago (MYA) and crown-Blattodea originated 205 (± 21.5) MYA (figure 1). These ages are congruent with all other dated phylogenies except Legendre *et al.* [12] who estimated these nodes as 30–70 Myr older. This is not unexpected given that Legendre *et al.* [12] allowed age estimates to be as old as possible to conservatively test controversial fossils, using a very old maximal root age. The comparatively young ages we obtained for stem- and crown-Blattodea are in contrast to the wide-held assumption that these insects have existed since the Carboniferous (approx. 304 MYA). Cockroach-like insects with long ovipositors, so-called 'roachoids', occurred in the Carboniferous and Permian (figure 2; e.g. [8,18]). Some of them are likely representatives of stem-Dictyoptera (electronic supplementary material, S2), while the precise phylogenetic position of others remain unresolved. Our divergence time estimates clearly show that modern cockroaches evolved after these 'roachoids' with long ovipositors, thus further confirmation that these roachoids are not crown-Dictyoptera (figure 2; further discussed in [7,8]).

Within crown-Blattodea, our results more sharply contrast other divergence time studies [9,11,12,16] and show that most subgroups are much younger than previously thought. We retrieve a Cretaceous origin for most major splits within Blattodea, as opposed to a Jurassic or Triassic origin (figure 2). The only exceptions are Corydioidea and Kittrickia (Middle or Late Jurassic) and crown-Blattidae (Paleogene). Our divergence time results also strongly decrease, or even bridge, the gaps between the oldest described fossils and molecular age estimates for various subgroups of Blattodea (figure 2).

During the Cretaceous, soil nitrogen levels are thought to have significantly increased [43] as a result of angiosperms dominating the global flora in replacement of Gymnosperms (figure 2) [43]. Blattodea would have both benefited from (through increased available dietary nitrogen) and contributed to (as detritus processors [4]) this macro-ecological shift.

We found that the last common ancestor of the xylophagous taxon Tutricablattae originated 134 (± 13.5) MYA on the remnants of Gondwana (figure 2; [9]). Some previous studies gave purported records of fossil termite nests from 181 to 235 MYA, see [44]. However, both the age and attribution of these putative nests to termites has been challenged (e.g. [12]). A Cretaceous origin of termites might correspond with the origin of crown-angiosperms (figure 2), potentially relating to many factors (e.g. increased food availability for termites, opportunity for adaptation, shifts in soil ecology). However, vast uncertainties in their age [45] leave correlations up for debate.

Our analyses clearly date the origin of Neoisoptera, which include the vast majority of termite species, to the beginning of the Palaeogene (53 ± 13 MYA). Our data thus provide strong additional support [16] that this key evolutionary radiation could be correlated with the rise of flowering plants to global dominance, which was completed by the end of the Cretaceous [43] or a competitive release after the K-Pg mass extinction event (figure 2).

Prior to the rise of angiosperms and the associated abundance of available nitrogen, Blattodea evolved unique evolutionary strategies for maintaining internal nitrogen economy by symbiosis with microbes. Most cockroaches are thought to have endocellular symbiotic bacteroids, i.e. *Blattabacterium*, that provide their hosts with amino acids and recycle nitrogenous waste products into usable nitrogen [10]. We corroborate previous accounts [10,23] in showing that *Blattabacterium* is absent in Mantodea and present in almost all groups of Blattodea except Euisoptera and *Nocticola* (see electronic supplementary material, S1.6 for more details). Additionally, we could not determine the presence of *Blattabacterium* in *Diploptera*, *Tivia*, and *Lamproblatta*—the latter two species with key positions in the tree (i.e. they influence the ancestrally inferred state of *Blattabacterium* presence; see electronic supplementary material, S3), for which the occurrence of *Blattabacterium* has not yet been studied. For now, we assume that the symbioses with *Blattabacterium* evolved once during Blattodea's evolutionary history [23] and that it was lost twice: in *Nocticola* and again in Euisoptera (electronic supplementary material, S1.6). Further potential losses should be investigated by future studies.

(ii) Sociality and parental care (electronic supplementary material, S3)

Cockroaches and termites show a wide spectrum of social behaviour, ranging from simple brood aggregation to full

eusociality in termites. Our divergence time analyses indicate that eusociality, along with the origin of stem-Isoptera, evolved less than 134 (± 13.5) MYA. Isoptera may have been the only eusocial organisms for approximately 39 Myr [18] or similar social structures could have evolved earlier in ants and bees (figure 2; [17]). Less complex social structures evolved in the common ancestor of termites and *Cryptocercus*, and later on in Blaberidae (e.g. [9]). Almost all cockroaches show some form of maternal care [4,14], but this behaviour includes various forms such as protecting eggs, nursing offspring, or nest building. These behaviours strongly differ and are difficult to homologize. Additionally, forms of maternal care are also found in some mantises [46]. Therefore, we refrain from making any statement about the evolutionary origin of maternal care in general and instead discuss specific forms.

One aspect of maternal care in cockroaches relates to the egg package, i.e. ootheca, which occur in all Dictyoptera except Euisoptera. According to our analyses, this feature was present in the last common ancestor of Dictyoptera and originated between 346 (± 25) MYA and 263 (± 30) MYA. However, in contrast to mantises, which create oothecae outside their bodies and attach them to substrate (figure 3a), our results suggest that early species of Blattodea produced them internally (figure 3a; and see [8] for discussion). Our ancestral state reconstruction suggests that laying an ootheca in a pre-dug hole is an ancestral trait in Blattodea (figure 3b). This procedure is still found in many Blattidae and Blaberoidea, while it is secondarily modified in others. Corydioidea simply drop their egg case without further care while Kittrickia lay the ootheca before they start to dig the hole [14]. In extant *Lamproblatta*, the ootheca is left unprotected while the adult digs its cradle but in Tutricablattae, who perform the whole procedure in a woody gallery, this danger is alleviated. The observation of these changes in oothecal care led [14] suggest that these groups might be closely related, which our study strongly supports (electronic supplementary material, S1.4 and figure S4).

Female Solumblattodea can produce oothecae without drastically deforming their bodies due to a valvate subgenital plate. This trait was likely present in the ancestral Blattodea [8] but it was lost among Blaberoidea, which have a simple, unarticulated subgenital plate. Thus, Blaberoidea must deal with the ootheca in other ways. As supported by our ancestral state reconstruction (figure 3a), one novelty in the ancestor of Blaberidae and (Blattellinae + *Nyctibora*) was the 90° rotation of the laterally flattened ootheca, which better fits in their dorsoventrally flattened bodies. Our retrieved monophyly of this group (figure 1) implies that this trait evolved only once and no reversal occurred in Pseudophyllodromiinae or Ectobiinae, as would be implied with other topologies (e.g. [11,12,16]); although data for *Anallacta* is lacking). The novelty of rotating the ootheca arose before ovovivipary, i.e. permanent carriage of the ootheca within the brood sac of the female. We found ovovivipary to be plesiomorphic for Blaberidae (figure 3b). These were all a precedent to true vivipary, seen to recently evolve in one genus of Blaberidae (electronic supplementary material, S3).

Post-ovipositional maternal care can manifest as maternal brood care or ovovivipary. Our results indicate that these were not present in the last common ancestor of Blattodea. Instead brood care, including long-lasting biparental brood care, evolved in the last common ancestor of *Cryptocercus*

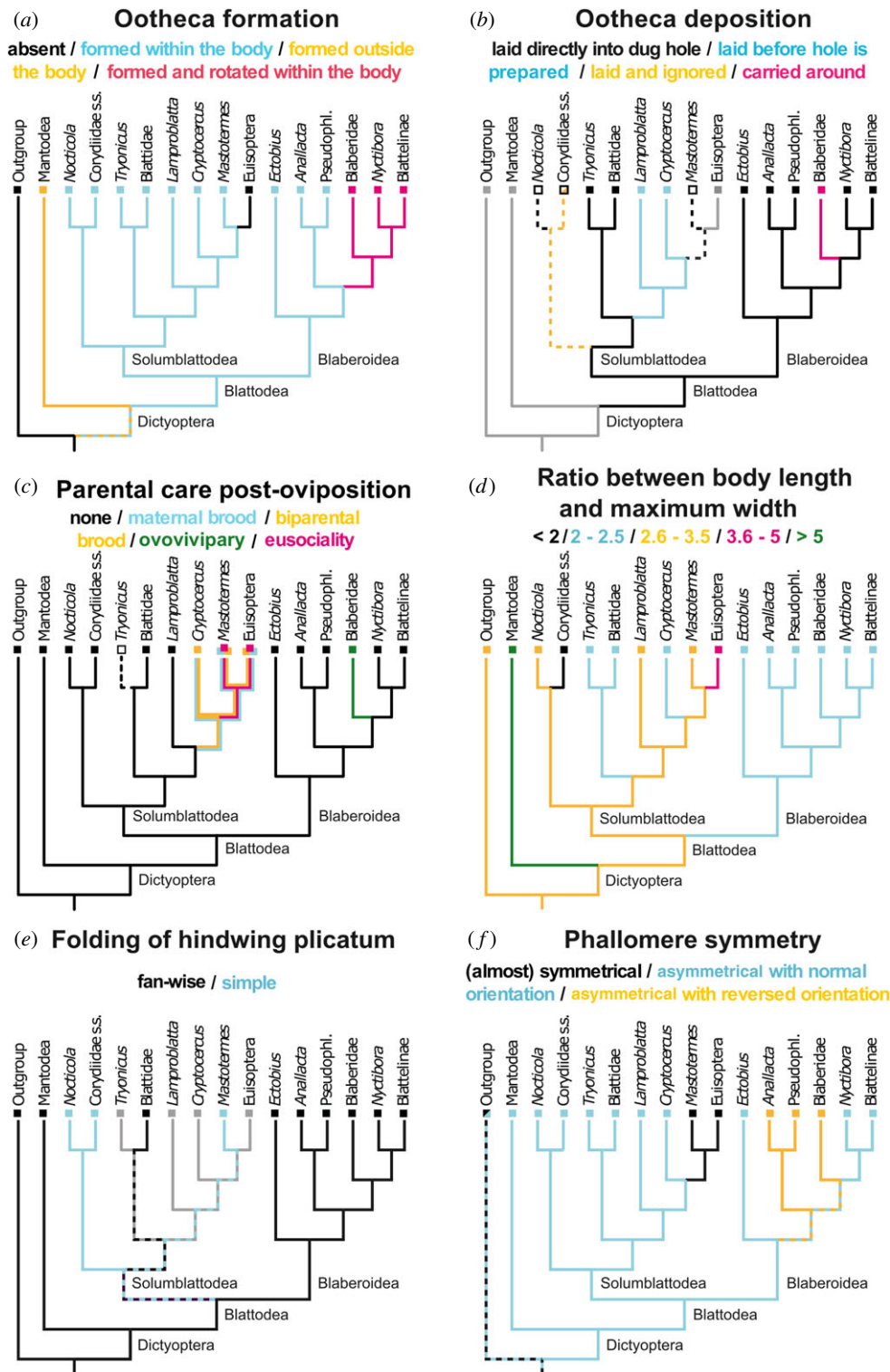


Figure 3. Ancestral state reconstructions of selected traits in the evolutionary history of Blattodea, represented by a simplified tree. Reconstructions of: (a) mode of ootheca formation, (b) ootheca laying behavioural sequence, (c) type of parental care post-oviposition, (d) body shape (length to width ratio), (e) hindwing folding type, and (f) phallomere symmetry. Solidly coloured branches represent the state for that lineage or tip. Dashed branches or no colouration represent uncertain states. States not applicable to the taxon are in grey. Full reconstructions of all traits are given in electronic supplementary material, S3.

and Isoptera (figure 3c). In the latter, it occurs among dealates during the early stages of colony foundation [47,48]. A similar form of social behaviour is also reported for some Blaberid cockroaches [4] such as *Salganea* or *Parasphaeria*. However, the situation in *Cryptocercus* + Isoptera differs strikingly from all others by involving proctodeal feeding (figure 3c) [49]. Ovovivipary is only found in Blaberidae cockroaches and possibly *Blattella* [14].

(iii) Morphological evolution (electronic supplementary material, S3)

Body length-width ratios have been greatly conserved within Blattodea (figure 3d). We reconstructed the ground-plan of Blattodea with a length-width ratio between 2.6 and 3.5, a situation retained in ancestral Solumblattodea (figure 3d). According to our data, Corydiidae *sensu stricto* became

moderately round (ratio < 2 : 1), which was retained in most extant species. Representatives of this group are known to live in xeric habitats [4] in which a round body shape, i.e. a low surface-area volume ratio, would assist with water retention. Among Euisoptera the body shape is even more strongly elongated (ratio 3.6–5.0). This is almost certainly an adaptation to living in enclosed tunnels, a situation found in other wood-eating lineages of Blattodea (e.g. *Cyrtotria*, *Compsagis*, *Paramuzoa*), but possibly has additional biological implications [50].

Two different types of hindwing folding occur among Blattodea: Corydioidea and *Mastotermes* show a simple folding, while all others have additional fan-wise folds in their anal area (plicatum). Once deployed, a folded plicatum typically has more surface area and is more easily deformed, thus providing more efficient aerofoil. This is perhaps why Rehn [51] assumed that the simple folding observed in Corydioidea, a presumably less functionally efficient configuration, represents the ancestral condition for all Blattodea. However, our analysis contradicts this and shows that the ancestral blattodean folded the plicatum of its hindwing fan-wise (figure 3e).

There were also multiple changes in male-genital phallosome symmetry during the evolution of Blattodea (figure 3f). For instance, we show that Isoptera likely secondarily gained bilateral symmetry in male genitalia and within Blaberoidea two major subgroups exhibit reversed male-genital asymmetry (electronic supplementary material, S3). Additionally, some Ectobiinae and Pseudophyllodromiinae not included in our study exhibit similar changes in symmetry [2]. We therefore cannot clarify the polarity of this character (electronic supplementary material, S3).

We corroborate previous studies [6,18] in showing that the reduction of the median ocellus is an apomorphy of Blattodea (electronic supplementary material S3 and table S12). This challenges the placement of some purported crown-group fossils with three ocelli [7].

4. Conclusion

Our analyses allow for the most comprehensive integrative study of the evolution of Blattodea. Our dataset of nuclear single-copy protein-coding genes provide strong support for many disputed relationships earlier questioned in the phylogeny of Blattodea. Our approach to assessing topological support resolves issues of ambiguous support discussed in other studies [11,12,52], while bringing a new issue to light in the case of *Mastotermes* and *Zootermopsis*. Notably, our data strongly supports: Blaberoidea as sister-group to the remaining Blattodea; *Lamproblatta* being the closest relative to the wood-feeding and social clade *Cryptocercus* + termites; and *Tryonicus* forming a clade with Blattidae. Using highly vetted fossil calibrations and genome-scale nuclear data to estimate

divergence times, we show that most major groups of Blattodea originated during the Cretaceous (147–66 Myr) and thus arose much later than previously thought. These younger ages narrow the gap between molecular divergence time estimates and the fossil record. Finally, our robust phylogeny also affords us the opportunity to make strong conclusions about phenotypic modifications in Blattodea associated with morphology, and behaviour. We found—among the various forms of social behaviour occurring within Blattodea—that maternal brood care is not part of the Blattodea ground-plan but evolved independently in different subgroups. The ancestral Blattodea protected its egg package by burying it in a pre-dug hole. Modifications of this ground-plan (including ovivipary and vivipary) occurred within various subgroups. We suggest that the transition from a free-living ancestor to living within wood (in *Cryptocercus* and termites) could have been partially driven by advantages gained in protection of the ootheca.

Data accessibility. Transcriptome sequences: Genbank Umbrella Bioproject ID PRJNA183205, see Supplementary Table S1 for single Bioprojects included in this study. Supplementary data files are available in the Dryad Digital Repository: <https://doi.org/10.5061/dryad.p5t5gh1> [53].

Authors' contributions. D.A.E., B.W., and S.S. conceived the study. D.A.E., B.W., M.F., J.K., R.M., K.S., and J.L.W. collected or provided samples. A.D., R.S.P., S.L., L.P., X.Z., K.M., and S.S. assembled and processed the transcriptomes. W.T., K.M., and S.S. phylogenetically analysed the transcriptomes and performed topology tests. D.B., A.D., B.M., L.P., M.P., R.S.P., K.M., and S.S. developed scripts, datasets, and programs. D.A.E., B.W., O.B., J.R., T.W., and J.L.W. contributed to compiling fossil calibration choices, with O.B. taking the lead. D.A.E., M.K.K., R.S.P., J.L.W., K.M., and S.S. contributed to dating analyses with M.K.K. and J.L.W. taking the lead. The morphological data matrix was compiled and analysed by D.A.E. and B.W. D.A.E. analysed the transcriptomes for the presence of *Blattabacterium*. All authors contributed to the writing of the manuscript, with D.A.E., B.W., K.M., and S.S. taking the lead and F.L. providing major revisions.

Competing interests. We declare we have no competing interests.

Funding. D.A.E.: National Science Foundation (award no. 1608559), Rutgers University; B.W.: Deutsche Forschungsgemeinschaft (WI 4324/1-1); M.F.: Japan Society for the Promotion of Science KAKENHI (JP15J00776); M.K.K.: NSF Career grant no. 1453157; R.M.: Japan Society for the Promotion of Science KAKENHI (JP25440201); J.L.W.: NSF Career grant no. 1453157.

Acknowledgements. The authors extend their gratitude to all those who assisted with any aspect of this project, from specimen collection, to molecular laboratory work, to bioinformatics, divergence time estimates, and all our analyses. Specifically we would like to thank Judith Korb, Robert M. Waterhouse, Lars S. Jermiin, Michael Ott, Jörg Bernhardt, Ian Biazzo, Reinhard Predel, Rene Koehler, Philipp Erkeling, Rüdiger Plarre, Geoff Monteith, Apisit Thipaksorn, Akito Kawahara, Hans Pohl, Sven Bradler, Janice Edgerly-Rooks, Makiko Fukui, Dieter Schulten, Shota Shimizu, Romolo Fochetti, Guanliang Meng, Chentao Yang, Klaus Klass, Donald Mullins, Tristan Shanahan, David Hasselhoff, Ekaterina Sidorchuk, Alexander P. Rasnitsyn, Dimitri Shcherbakov, and Peter Vršanský, Mario Dos Reis, Lena Waidele, Manuela Sann, Ondrej Hlinka, the CSIRO HPC team and other colleagues from BGI-Shenzhen contributed to sample and data curation and management. Thanks to BGI-Shenzhen for supporting and funding this study, through the 1KITE initiative.

References

- Inward D, Beccaloni G, Eggleton P. 2007 Death of an order: a comprehensive molecular phylogenetic study confirms that termites are eusocial cockroaches. *Biol. Lett.* **3**, 331–335. (doi:10.1098/rsbl.2007.0102)
- Klass K-D, Meier R. 2006 A phylogenetic analysis of Dictyoptera (Insecta) based on morphological characters. *Entomologische Abhandlungen* **63**, 3–50.
- Beccaloni G, Eggleton P. 2013 Order: Blattodea. *Zootaxa* **3703**, 46. (doi:10.11646/zootaxa.3703.1.10)
- Bell WJ, Roth LM, Nalepa C. 2007 *Cockroaches: ecology, behavior and natural history*. Baltimore, MD: Johns Hopkins University Press.
- Bignell DE, Eggleton P. 2000 Termites in ecosystems. In *Termites: evolution, sociality, symbioses, ecology* (eds T Abe, DE Bignell, M Higashi), pp. 363–387. Dordrecht, The Netherlands: Kluwer Academic Publishers.
- Wipfler B, Weissing K, Klass KD, Weihmann T. 2016 The cephalic morphology of the American cockroach *Periplaneta americana* (Blattodea). *Arthropod. Syst. Phylogeny* **74**, 267–297.

7. Evangelista DA, Djernæs M, Kohli MK. 2017 Fossil calibrations for the cockroach phylogeny (Insecta, Dictyoptera, Blattodea), comments on the use of wings for their identification, and a redescription of the oldest Blaberidae. *Palaeontol. Electron.* **20**, 3, 1–23.
8. Hörnig MK, Haug C, Schneider JW, Haug JT. 2018 Evolution of reproductive strategies in Dictyopteran insects—clues from ovipositor morphology of extinct roachoids. *Acta Palaeontol. Pol.* **63**, 1–24. (doi:10.4202/app.00324.2016)
9. Bourguignon T *et al.* 2018 Transoceanic dispersal and plate tectonics shaped global cockroach distributions: evidence from mitochondrial phylogenomics. *Mol. Biol. Evol.* **35**, 1–14. (doi:10.1093/molbev/msy013)
10. Patino-Navarrete R, Moya A, Latorre A, Pereto J. 2013 Comparative genomics of *Blattabacterium cuenoti*: the frozen legacy of an ancient endosymbiont genome. *Genome Biol. Evol.* **5**, 351–361. (doi:10.1093/gbe/evt011)
11. Djernæs M, Klass KD, Eggleton P. 2015 Identifying possible sister groups of Cryptocercidae + Isoptera: a combined molecular and morphological phylogeny of Dictyoptera. *Mol. Phylogenet. Evol.* **84**, 284–303. (doi:10.1016/j.ympev.2014.08.019)
12. Legendre F, Nel A, Svenson GJ, Robillard T, Pellens R, Grandcolas P. 2015 Phylogeny of Dictyoptera: dating the origin of cockroaches, praying mantises and termites with molecular data and controlled fossil evidence. *PLoS ONE* **10**, e0130127. (doi:10.1371/journal.pone.0130127)
13. Muriene J. 2009 Molecular data confirm family status for the *Tryonicus–Lauraesilpha* group (Insecta: Blattodea: Tryonicidae). *Org. Divers. Evol.* **9**, 44–51. (doi:10.1016/j.ode.2008.10.005)
14. McKittrick FA. 1964 Evolutionary studies of cockroaches. *Mem. Cornell Univ. Agric. Exper. Station* **389**, 1–197.
15. Gautier J-Y, Deleporte P. 1986 Behavioural ecology of a forest living cockroach, *Lamproblatta albipalpus* in French Guyana. In *Behavioral ecology and population biology* (ed. L. Drickamer), pp. 17–22. Toulouse Privat, IEC.
16. Wang Z, Shi Y, Qiu Z, Che Y, Lo N. 2017 Reconstructing the phylogeny of Blattodea: robust support for interfamilial relationships and major clades. *Sci. Rep.* **7**, 1–8. (doi:10.1038/s41598-017-04243-1)
17. Peters RS *et al.* 2017 Evolutionary history of the Hymenoptera. *Curr. Biol.* **27**, 1013–1018. (doi:10.1016/j.cub.2017.01.027)
18. Grimaldi D, Engel MS. 2005 *Evolution of the insects*, p. 772. New York, NY: Cambridge University Press.
19. Cui Y, Evangelista DA, Béthoux O. 2018 Prayers for fossil mantis unfulfilled: *Prochaerododis enigmaticus* Piton, 1940 is a cockroach (Blattodea). *Geodiversitas* **40**, 355–362. (doi:10.5252/geodiversitas2018v40a15)
20. Misof B *et al.* 2014 Phylogenomics resolves the timing and pattern of insect evolution. *Science* **346**, 763–767. (doi:10.1126/science.1257570)
21. Korb J, Thorne B. 2017 Sociality in termites. In *Comparative social evolution* (eds D. Rubenstein, P. Abbot), pp. 124–152. Cambridge, UK: Cambridge University Press.
22. Tokuda G *et al.* 2013 Maintenance of essential amino acid synthesis pathways in the *Blattabacterium cuenoti* symbiont of a wood-feeding cockroach. *Biol. Lett.* **9**, 20121153. (doi:10.1098/rsbl.2012.1153)
23. Lo N, Bandi C, Watanabe H, Nalepa C, Beninati T. 2003 Evidence for cocoladogenesis between diverse Dictyopteran lineages and their intracellular endosymbionts. *Mol. Biol. Evol.* **20**, 907–913. (doi:10.1093/molbev/msg097)
24. Wipfler B *et al.* 2019 Evolutionary history of Polyneoptera and its implications for our understanding of early winged insects. *Proc. Natl. Acad. Sci. USA.* (doi:10.1073/pnas.1817794116)
25. Dell’Ampio E *et al.* 2014 Decisive data sets in phylogenomics: lessons from studies on the phylogenetic relationships of primarily wingless insects. *Mol. Biol. Evol.* **31**, 239–249. (doi:10.1093/molbev/mst196)
26. Nguyen LT, Schmidt HA, von Haeseler A, Minh BQ. 2015 IQ-TREE: a fast and effective stochastic algorithm for estimating maximum-likelihood phylogenies. *Mol. Biol. Evol.* **32**, 268–274. (doi:10.1093/molbev/msu300)
27. Kalyaanamoorthy S, Minh BQ, Wong TK, Haeseler AV, Jermini ALS. 2017 ModelFinder: fast model selection for accurate phylogenetic estimates. *Nat. Methods* **14**, 587–589. (doi:10.1038/nmeth.4285)
28. Pattengale ND, Alipour M, Bininda-Emonds ORP, Moret BME, Stamatakis A. 2009 How many bootstrap replicates are necessary? In *Research in computational molecular biology RECOMB 2009 lecture notes in computer science* (eds R. Fueda, L. Kruuk). Berlin, Germany: Springer.
29. Stamatakis A. 2014 RAXML version 8: a tool for phylogenetic analysis and post-analysis of large phylogenies. *Bioinformatics* **30**, 1312–1313. (doi:10.1093/bioinformatics/btu033)
30. Aberer AJ, Krompass D, Stamatakis A. 2013 Pruning rogue taxa improves phylogenetic accuracy: an efficient algorithm and Webservice. *Syst. Biol.* **62**, 162–166. (doi:10.1093/sysbio/sys078)
31. Shimodaira H. 2002 An approximately unbiased test of phylogenetic tree selection. *Syst. Biol.* **51**, 492–508. (doi:10.1080/10635150290069913)
32. Strimmer K, Haeseler AV. 1997 Likelihood-mapping: a simple method to visualize phylogenetic content of a sequence alignment. *Proc. Natl. Acad. Sci. USA* **94**, 6815–6819. (doi:10.1073/pnas.94.13.6815)
33. Sann M *et al.* 2018 Phylogenomic analysis of Apoidea sheds new light on the sister group of bees. *BMC Evol. Biol.* **18**, 71. (doi:10.1186/s12862-018-1155-8)
34. Parham JF *et al.* 2012 Best practices for justifying fossil calibrations. *Syst. Biol.* **61**, 346–359. (doi:10.1093/sysbio/syr107)
35. Yang Z. 2007 PAML 4: phylogenetic analysis by maximum likelihood. *Mol. Biol. Evol.* **24**, 1586–1591. (doi:10.1093/molbev/msm088)
36. Camacho C, Coulouris G, Avagyan V, Ma N, Papadopoulos J, Bealer K, Madden TL. 2009 BLAST+: architecture and applications. *BMC Bioinf.* **10**, 421. (doi:10.1186/1471-2105-10-421)
37. Djernæs M, Klass K-D, Picker MD, Damgaard J. 2012 Phylogeny of cockroaches (Insecta, Dictyoptera, Blattodea), with placement of aberrant taxa and exploration of out-group sampling. *Syst. Entomol.* **37**, 65–83. (doi:10.1111/j.1365-3113.2011.00598.x)
38. Maddison WP, Maddison DR. 2017 Mesquite: A modular system for evolutionary analysis.
39. Bollback JP. 2006 SIMMAP: stochastic character mapping of discrete traits on phylogenies. *BMC Bioinf.* **7**, 88. (doi:10.1186/1471-2105-7-88)
40. Grandcolas P. 1996 The phylogeny of cockroach families: a cladistic appraisal of morpho-anatomical data. *Can. J. Zool.* **74**, 508–527. (doi:10.1139/z96-059)
41. McKittrick FA. 1965 A contribution to the understanding of cockroach-termite affinities. *Ann. Entomol. Soc. Am.* **58**, 18–22. (doi:10.1093/aesa/58.1.18)
42. Zheng Y, Wiens JJ. 2015 Do missing data influence the accuracy of divergence-time estimation with BEAST? *Mol. Phylogenet. Evol.* **85**, 41–49. (doi:10.1016/j.ympev.2015.02.002)
43. Berendse F, Scheffer M. 2009 The Angiosperm radiation revisited, an ecological explanation for Darwin’s ‘abominable mystery’. *Ecol. Lett.* **12**, 865–872. (doi:10.1111/j.1461-0248.2009.01342.x)
44. Genise JF. 2005 Comment—Advanced early Jurassic termite (Insecta: Isoptera) nests: evidence from the Clarens Formation in the Tuli Basin, Southern Africa (Bordy *et al.* 2004). *Palaios* **20**, 303–308. (doi:10.2110/palo.2004.p05-C01)
45. Barba-Montoya J, Reis MD, Schneider H, Donoghue PCJ, Yang Z. 2018 Constraining uncertainty in the timescale of Angiosperm evolution and the veracity of a Cretaceous terrestrial revolution. *New Phytol.* **218**, 819–834. (doi:10.1111/nph.15011)
46. Gilbert JD, Manica A. 2015 The evolution of parental care in insects: a test of current hypotheses. *Evolution* **69**, 1255–1270. (doi:10.1111/evo.12656)
47. Watson JAL, Okot-Kotber BM, Noirot C. 1985 *Caste differentiation in social insects*. Oxford, UK: Pergamon.
48. Nutting W. 1969 Flight and colony foundation. In *Biology of termites I* (eds K. Krishna, FM. Weesner), pp. 233–282. New York, NY: Academic Press.
49. Nalepa CA. 1994 Nourishment and the origin of termite eusociality. In *Nourishment and evolution in insect societies* (eds J. Hunt, CA. Nalepa), pp. 57–104. Boulder, CO: Westview Press.
50. Nalepa CA. 2011 Body size and termite evolution. *Evolutionary Biology* **38**, 243–257. (doi:10.1007/s11692-011-9121-z)
51. Rehn JWH. 1951 Classification of the Blattaria as indicated by their wings (Orthoptera). *Mem. Am. Entomol. Soc.* **14**, 1–134.
52. Evangelista D, Thouzé F, Kohli MK, Lopez P, Legendre F. 2018 Topological support and data quality can only be assessed through multiple tests in reviewing Blattodea phylogeny. *Mol. Phylogenet. Evol.* **128**, 112–122. (doi:10.1016/j.ympev.2018.05.007)
53. Evangelista DA *et al.* 2019 Data from: An integrative phylogenomic approach illuminates the evolutionary history of cockroaches and termites (Blattodea). Dryad Digital Repository. (doi.org/10.5061/dryad.p5t5gh1)