



HAL
open science

Some principles to optimise an additively manufactured multi-component product

Myriam Orquéra, Sébastien Campocasso, Dominique Millet

► To cite this version:

Myriam Orquéra, Sébastien Campocasso, Dominique Millet. Some principles to optimise an additively manufactured multi-component product. *Journal of Engineering Design*, 2020, 31 (4), pp.219-240. 10.1080/09544828.2019.1699034 . hal-02509887

HAL Id: hal-02509887

<https://hal.science/hal-02509887>

Submitted on 14 Dec 2020

HAL is a multi-disciplinary open access archive for the deposit and dissemination of scientific research documents, whether they are published or not. The documents may come from teaching and research institutions in France or abroad, or from public or private research centers.

L'archive ouverte pluridisciplinaire **HAL**, est destinée au dépôt et à la diffusion de documents scientifiques de niveau recherche, publiés ou non, émanant des établissements d'enseignement et de recherche français ou étrangers, des laboratoires publics ou privés.

To cite this article: Myriam Orqu era, S ebastien Campocasso & Dominique Millet (2020) Some principles to optimise an additively manufactured multi-component product, Journal of Engineering Design, 31:4, 219-240, DOI: [10.1080/09544828.2019.1699034](https://doi.org/10.1080/09544828.2019.1699034)

Some principles to optimize an additively manufactured multi-component product

Journal of Engineering Design

Myriam Orqu era^{a*}, S ebastien Campocasso^a and Dominique Millet^a

^a*Universit e de Toulon, COSMER, Toulon, France*

*Corresponding author: Tel.: +33-483-166-613; fax: +33-483-166-601; E-mail address: orquera@univ-tln.fr; University of Toulon, CS 60584, 83041 Toulon Cedex 9, France

ORCID:

Myriam Orqu era: 0000-0001-8339-5041

S ebastien Campocasso: 0000-0002-9612-2920

Dominique Millet: 0000-0002-3103-2983

Abstract:

Depending on the requirements, the design of a product may result in very different solutions. Topological optimization is a mathematical tool that can be used to obtain lighter parts without decreasing their stiffness. As the optimized part shapes are often too complex to be manufacturable, additive manufacturing is generally used. Usually, the topological optimization is performed on a single part. However, for a product, the decreasing of mass and inertia in each individual part has an impact on the loads applied onto all the parts of the system. Moreover, different paths can be used to optimize a product, e.g. optimizing all the parts simultaneously or part after part. Therefore, the aim of this paper is to propose, based on a case study, some optimization principles to find the best optimization path to design an additively manufactured product. In order to do this, the concept of topological optimization loops is first proposed. Then, several optimization paths are compared. In comparison with a usual single topological optimization, the proposed method leads to an additional gain in mass of up to 35% for the case study. Finally, some optimization principles are suggested to choose the most adapted path according to the designer objectives.

Keywords: Product design; Topological optimization; Additive manufacturing

Introduction and motivations

A mechanical system design must fulfill the functional needs which are commonly, for example: the product must be light; the product must withstand mechanical stresses ... In order to meet these expectations, topological optimization (TO) can be used (Bends e, 1995), but generally leads to an unmanufacturable design concept using conventional processes. Thus, as the shapes may be very complex (Barbieri et al., 2017), the choice of additive manufacturing (AM) to manufacture topological optimized parts is often wise (Liu et al., 2018). In recent years, many additive manufacturing processes have been developed. Layer by layer, shape by shape or line

by line, these fairly recent processes allow the material to be deposited where it is needed (Brackett et al., 2011; Thompson et al., 2016).

Multiple studies have shown the gains of the TO on the re-design of a part by comparing it with that obtained for conventional processes. Thus (Hällgren et al., 2016; Ren & Galjaard, 2015) proposed the re-design of an existing conventional manufactured part for AM. The results show a very significant gain on the final part mass as well as on the buy-to-fly ratio, while maintaining stable and efficient mechanical behaviour. Global design methods for AM using TO have been developed such as those proposed by (Ponche et al., 2014; Vayre et al., 2012), but published design methods often remain applied to a single mechanical part, with few articles dealing with the design optimization of a product. However, when topological optimization is used for mechanical assembly, the boundary conditions are modified by the decrease in the mass and inertia of the optimized parts, thus opening a way to perform an additional optimization. The purpose of this article is to address to the following four issues:

- (1) How to take into account the new boundary conditions during the topological optimization of a multicomponent-product?
- (2) By which part(s) should the optimization start?
- (3) Does this choice have an influence on the result?
- (4) And if so, would it be possible to establish optimization principles?

To answer these questions, this article first introduces an organization chart presenting a method of loop optimization in order to take into account new boundary conditions. Then, different paths for managing the impact of inertia are shown. The impact of the choice of design space at each step of this iterative scheme is also discussed. Finally, a path ranking taking into account the objectives of the designer is proposed and some optimization principles are suggested.

Previous methods of design for additive manufacturing (DfAM) using topology optimization

Generalities on topology optimization

According to (Guo & Cheng, 2010) topology optimization “aims to find the optimal way of material distribution in the structure”.

A simple and generic formulation of an optimization problem can be written as follows (Zhou et al., 2004) :

$$\begin{aligned} & \min_{\Gamma \in \Omega} f(\Gamma) \\ & \text{Subject to } c(\Gamma) \geq 0 \end{aligned} \quad \text{Equation (1)}$$

With:

- Γ variable
- Ω predefined design domain
- $f(\Gamma)$ objective function
- $c(\Gamma)$ constraint function

Many TO algorithms exist like ground structures or genetic algorithms, each of them having different advantages and drawbacks (Tang & Zhao, 2016). Thanks to its simplicity and nice results, the SIMP model (Simple Isotropic Material with Penalization) is implemented in numerous commercial finite element codes for topology design (Eschenauer & Olhoff, 2001;

Kim et al., 2002; Saadlaoui et al., 2017) and adapted for additive manufactured part design (Aremu et al., 2010; Krishna et al., 2017).

The SIMP material model covers the complete range of density values from 0 to 1 (Bendsøe, 1995; Bendsøe & Sigmund, 1999; Rozvany et al., 1992; Zhou & Rozvany, 1991), i.e. the TO result is a density distribution. Thus, according to the formulation of minimum compliance, the density ρ is introduced as a continuous variable (such as $0 \leq \rho \leq 1$), like a porous material with microscale voids. To achieve a 0/1 density distribution, the method assumes that the stiffness of the i -th element is determined by:

$$E_i(\Gamma) = \rho_i^p(\Gamma) \cdot E^* \quad \text{Equation (2)}$$

Where E^* is the full stiffness of the isotropic material, $\rho_i(\Gamma)$ the density of the i -th element and p the penalty factor ($1 \leq p \leq 4$). Its role is to penalize intermediate density ($p \geq 3$ is usually required).

In order to get closer to the real structural behaviour, several researchers have recently proposed improvements in the SIMP model (Chu et al., 2019; Micheletti et al., 2019; Zhang et al., 2018).

Design for AM using TO

According to (Pradel et al., 2018), during the design process for additive manufacturing, one step must be the structure optimization. Applying the SIMP model - used throughout this article - with a commercial software (Optistruct from Altair) implies following the workflow detailed in Figure 1.

For (Rodrigue & Rivette, 2010), the design space (DS) is the volume in which the material can be assigned during the optimization. (Tang & Zhao, 2014) defined the design space as the volumes which are used to bind the functional shapes and assist them in fulfilling their functional roles. As advised by (Goelke, 2016), the DS should be the largest one, allowing “to explore leading into the most design improvement opportunities”.

Functional shapes (FS) are defined as surfaces which can fulfill some functional requests (Tang & Zhao, 2014). They can be surfaces needed for connecting joints, or where loads are applied. A non-design space (NDS), even though part of the optimization problem, will not be modified during the optimization (Altair University, 2015). The use of NDS is optional when performing the optimization. NDS is:

- used to give volume to functional shapes,
- used to represent standard parts like bearings or the minimum thickness of fluid channels.

The DS and optional NDS are integrated into the optimization software. Boundary conditions, load steps (defined for each stage of the part or of the product life), the material, optimization objective and constraints are defined to obtain the material density distribution.

The TO result, which is a density distribution, has to be interpreted. Thus, some parameters have to be chosen by the designers (M.-H. Hsu & Hsu, 2005; Y.-L. Hsu et al., 2001) leading to a particular result (Morretton et al., 2019). The parameters are, for example, the design space definition, the density threshold, or the penalty factor.

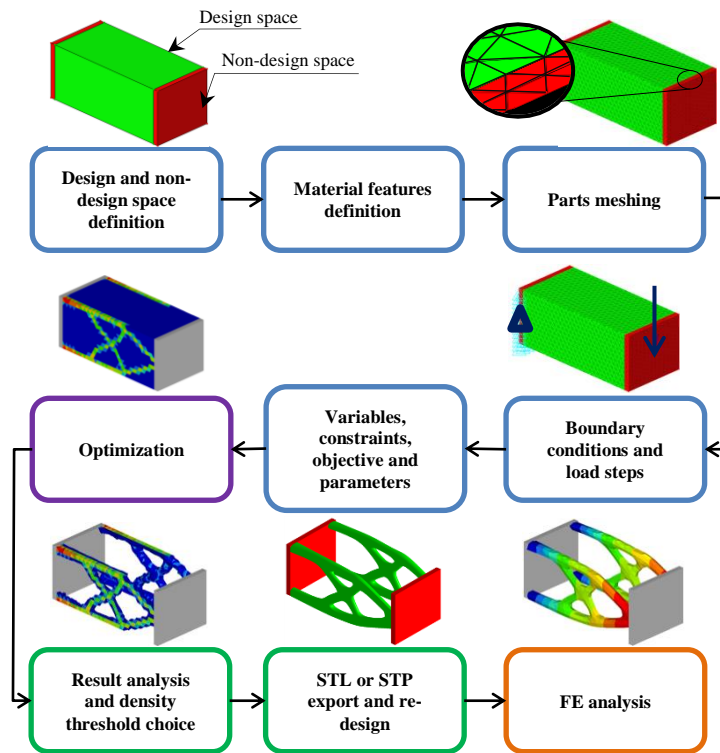


Figure 1. Traditional topology optimization workflow

Numerous articles or industrial applications illustrate design for AM by exploiting TO. For example (Tomlin & Meyer, 2011) demonstrated that different DS and NDS lead to different design and mechanical behaviour of a bracket. (Walton & Moztarzadeh, 2017) realized an optimised rear upright manufactured by electron beam melting. More recently (Munk et al., 2019) used topology optimization to find the minimum weight structures for a land gear.

Topological optimization of a multi-component product

As previously said, most of the AM articles have been written about the design of a single part (Barbieri et al., 2017; Han, 2017; Hodonou et al., 2019; Mancuso et al., 2019; Munk et al., 2019; Obaton et al., 2015; Ren & Galjaard, 2015; Tomlin & Meyer, 2011; Walton & Moztarzadeh, 2017), whereas the design optimization of additively manufactured multi-component products has rarely been studied. (Rodrigue & Rivette, 2010) designed a planetary gear system. After a step of parts consolidation, a topological optimization was carried out on each rigid body. The purpose of the study conducted by (Sossou et al., 2018) was to manufacture additively a non-assembly topologically optimized vice. The necessary clearance and the most adapted orientation were chosen before applying a TO on each part. (Orqu era et al., 2017) studied a multi-component system (an oscillating cylinder engine). The goal of this study was to functionally improve the engine by using AM capabilities. To achieve this, TO was applied on each component together with functional improvements of the joints.

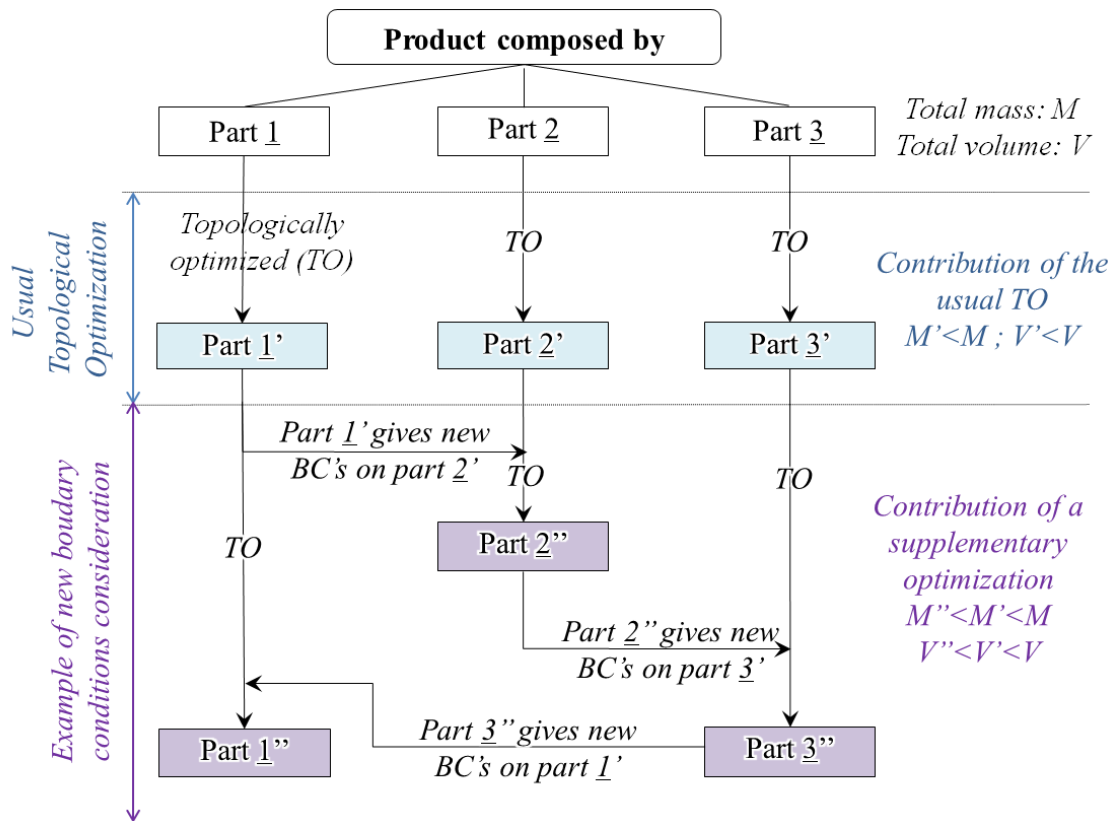


Figure 2. Comparison between one usual TO and multiple TO considering new BC on a multi-component design

Generally, mechanical systems are products whose parts have relative motions. Some parts and connecting joints undergo inertia loads. Topological optimization of moving parts allows to lightweight them and thus to reduce the loads due to inertia. For example, in the Figure 2, the part $1'$ which is the topologically optimized part 1 , gives new boundary conditions (BC) on the part $2'$. So, part $2'$ may be lighter with a new TO. The so optimized part denoted $2''$ has an impact on the BC of the optimized part $3'$ which can be optimized again, and so on.

In light of this clearly observable research gap, the purpose of this article is to consider mass and inertia decrease in the designing of an optimized multi-component product.

Method

Optimization paths

The first step of the method is to determine the first part or set of parts that has to be optimized. As this optimization sequence planning may influence the design, different optimization paths have to be identified and compared according to certain criteria.

The criteria would correspond to data relative to the mechanical behaviour (denoted M_b) of the system. It can be, for example, the mass of the system. For a pump or a propulsion system, the input or output torque may be the selected data. Following this general idea, different optimization paths can be identified, directly linked to the chosen criteria or not, as for instance:

Path 1- The part whose inertia (or mass) has the greatest impact on the mechanical behaviour is optimized first,

Path 2- Beginning the optimization with the part that has a parameter involved in the highest number of equations related to the mechanical behaviour,

Path 3- All parts are optimized simultaneously,

Path 4- Realizing derivate paths, for example mixing Path 1 with Path 2,

Path 5- The part that has the most connecting joints to the other parts of the system is optimized first.

To determine which part has the greatest impact on the feature M_b , the reduced sensibility coefficient S^* (Petit & Maillet, 2008) is used as shown in the Equation (3).

$$S^*(M_b/C_i) = C_i \cdot \frac{\partial M_b}{\partial C_i} \quad \text{Equation (3)}$$

M_b represents the mechanical feature and C_i the characteristic of the part i . The part whose characteristic leads to maximize $S^*(M_b/C_i)$ is optimised first for the Path 1.

For the Path 2, the static or dynamic mechanical equations have to be written in order to determine which part has a parameter involved in the highest number of equations. For the Path 5, connecting joints have to be counted.

In a next section three paths and two derivate one are applied to a case study in order to estimate the influence of the path choice.

Optimization impact estimation

The optimization impact estimation consists of estimating the need for a new topological optimization. For instance, in the Figure 2, the product has an output torque T_0 . After the first TO the new torque is T_1 . If both torques are identical or almost identical, further optimization is not useful. On the contrary if they are not identical, a new TO is necessary. An important issue is to decide from which T_1 value should a new TO be realized.

For this purpose, the mechanical behaviour ratio (denoted R_{Mb}) is proposed and calculated according to Equation (4).

$$R_{Mb} = \frac{Mb_{L-1}}{Mb_L} \quad \text{Equation (4)}$$

Mb_{L-1} and Mb_L are the respective values of the mechanical behaviour criteria, previously chosen by the designer, before and after the optimization. L (for loop) corresponds to the number of the considered TO loops. A parameter ε called convergence coefficient is also established. If the result of the R_{Mb} ratio is lower than $1-\varepsilon$ or higher than $1+\varepsilon$, the impact is estimated as significant. So, new iterations have to be done while the mechanical ratio does not belong to $[1-\varepsilon, 1+\varepsilon]$. The lower ε is, the more the impact of TO on the mechanical behaviour is taken into account. But this will influence the number of loops and therefore the calculation time. In this article, the impact of the ε value is discussed based on a case study.

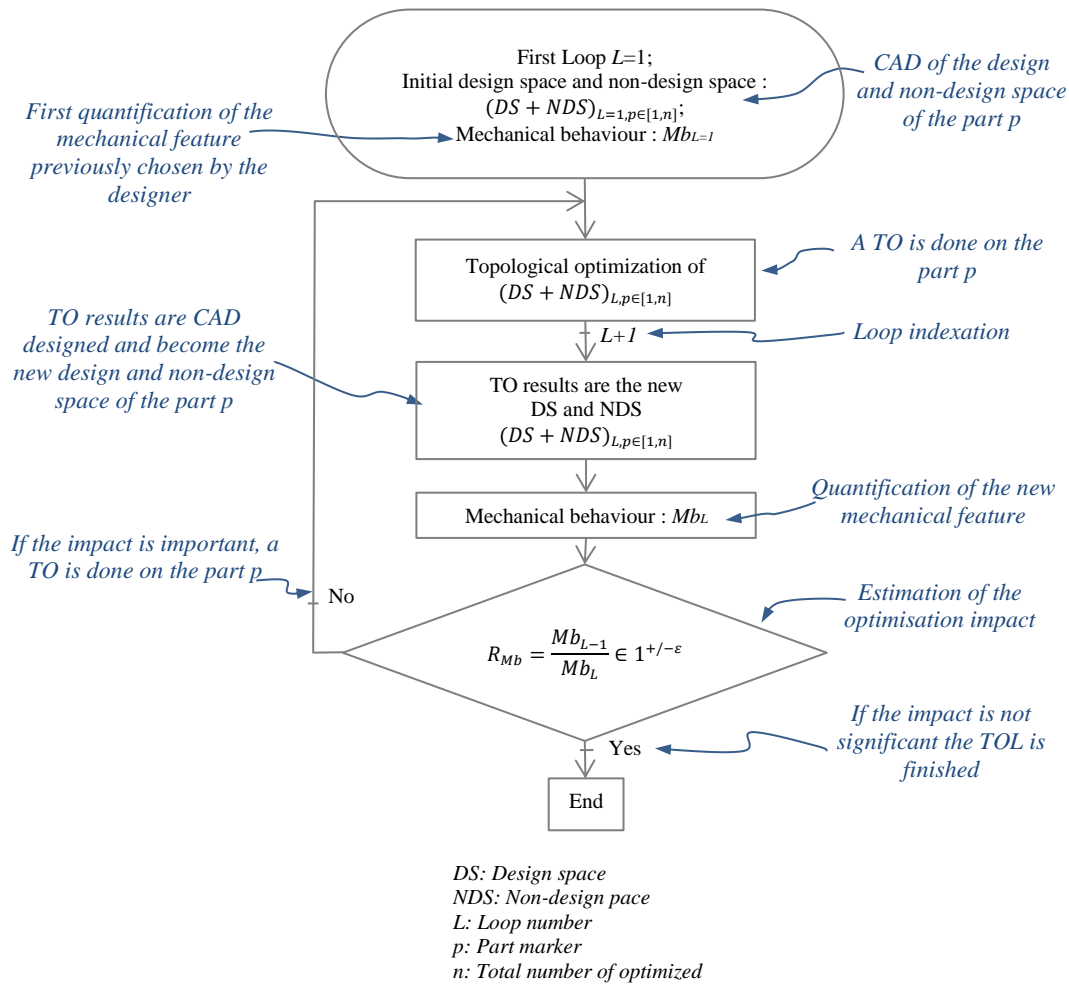


Figure 3. Topological optimization loop (TOL) organization chart considering inertia and mass decrease

The topological optimization loop

Based on the previous explanations, a organization chart showing the concept of Topological Optimisation Loop (TOL) for a multi-component is proposed in Figure 3.

Depending on the path choice, the TOL is applied first on the part which should be first optimised (for paths 1, 2 and 5), or on all the parts simultaneously for the path 3.

As explained in the topology optimization workflow (Figure 1), a design space and an optional non-design space are CAD designed for each “p” part and integrated into the optimization software. They are denoted by $(DS + NDS)_{L=1,p \in [1,n]}$ for the first loop. L and n are respectively the loop and the part number. Boundary conditions, load steps, material, optimization objective and constraints are also initially defined.

The first loop is a classic application of the topological optimization (using the TO workflow shown in Figure 1). The result is a material density distribution. After interpretation, a new CAD-design of the part is used as the design space (with the same non-design space as before, as explained in a next section) for the next loop. Denoted $(DS + NDS)_{L=2,p \in [1,n]}$, it now has a new mass and inertia which impact the other parts.

As explained previously, if the result of the R_{Mb} ratio is lower than $1-\epsilon$ or higher than $1+\epsilon$, the impact is estimated as significant. So, new iterations have to be done. Although this new organization chart is helpful to optimize a multi-component product, it should be noted that it has to be applied part by part.

Discussion about the design space

Generally the design space is chosen as the least restrictive to allow the software to find the optimum solution. So, normally the DS volume has to be the largest one. At the end of the first loop of the TO, as explained before, the mass and inertia are decreased so the loads intensities are smaller than those of the first TO loop. A second TO has to be done in which two DS may be used:

- the result of the first loop,
- the initial design space.

In order to allow more possibilities for the software, it seems wise to impose the new boundary conditions on the initial design space. But, because the loads are lower, using the initial design space leads to a mass higher than using the DS re-designed from the previous TO result, as shown in Figure 4.

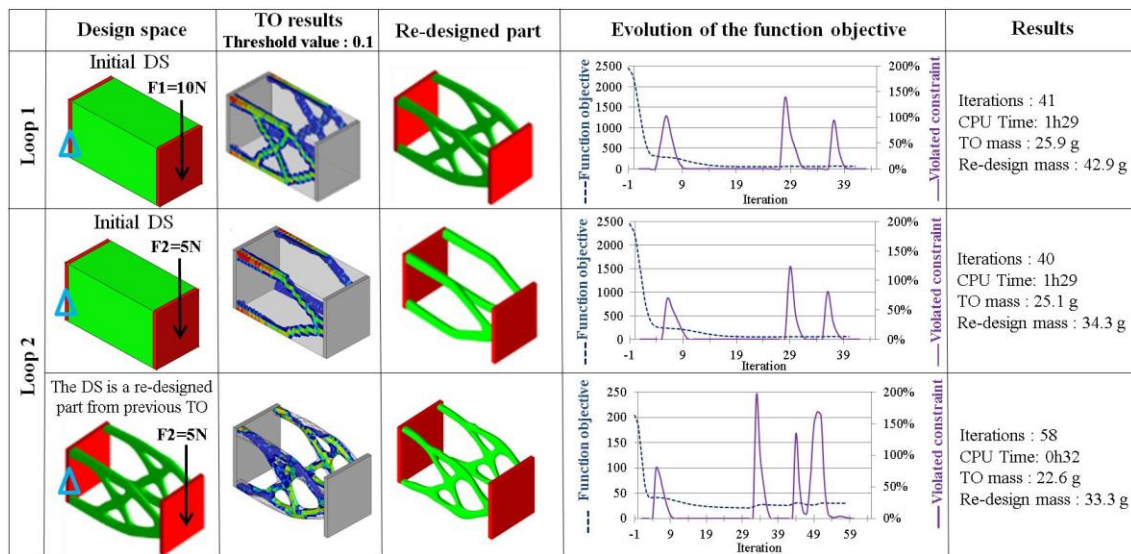


Figure 4. Impact of the design space choice for the second loop

The algorithm decreases the mass and verifies if the constraints are violated or not, until they are validated (see Figure 4). Moreover, if the first optimization loop gives a density distribution result under consequent loads, this same result will necessarily withstand the new lower loads. So using the DS of the previous loop has a great probability of converging with a lower mass and a shorter calculation time.

In conclusion, for the first TO the design space should be the least restrictive as possible. Then, for the next loops, using the previous DS with lower loads achieves better results.

Optimization path principle for the designers

Each path will lead to a specific result with a CPU time, a total mass, an estimation of the mechanical feature, etc. The main purpose of this article is, based on the paths results, to suggest optimization path principles in order to help designers to choose the best path considering their design objective.

Hence, in the next section different paths, using the TOL, are applied to a case study in order to make some comparisons, to assess the improvement of the system (thanks to the presented method) and to conclude on the optimization path principle.

Case study

System presentation

The subject of this case study is a robot arm tool holder of a sharpening machine proposed by (Bône et al., 1984). As shown in Figure 5, it is composed of a rotating support 1 on which is mounted a pivoting arm 2. The tool holder 3 has a cylindrical joint along \vec{z}_2 with the arm 2.

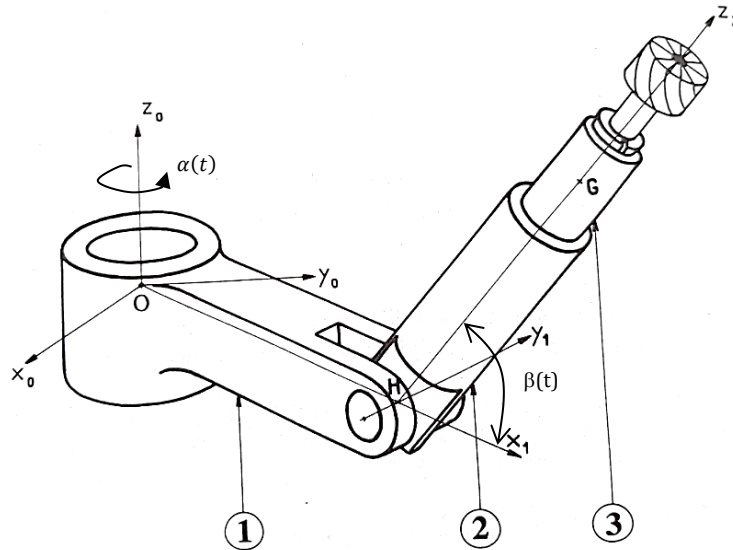


Figure 5. Case study: robot arm (Bône et al., 1984)

In order to simplify and target the objectives of the study, the following assumptions are made: friction and thermal effects are not considered.

In this study, only one case, placing the robot in a rather critical case is considered. The position of the arm 2 is constant and equal to $\beta = 0$ rad. The study data are:

- The rotating support has an acceleration equal to $\ddot{\alpha}(t) = \frac{\pi}{6}$ rad/s²,
- Acceleration (and brake) inertia value are considered at $t = 2$ s,
- The distances HG and OH are equal to 0.2 m and the tool rotation speed is equal to zero,
- All parts are in common steel (Young modulus $E = 210000$ MPa; density $\rho = 7.8$ kg/dm³; Poisson ratio $\nu = 0.3$; Rpe = 210 MPa),
- A safety factor is applied ($s = 2$).

Design spaces and non-design spaces were CAD designed for each part, as shown in Figure 6. The total mass of the non-optimized robot is equal to 16.2 kg and needs a torque to turn around \vec{z}_0 equal to 634 N.mm.

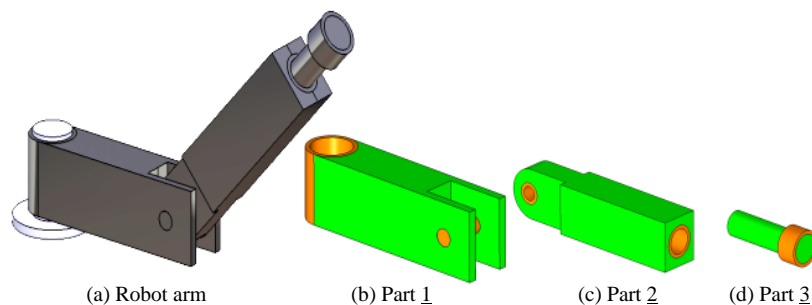


Figure 6. (a) Robot arm CAD designed; (b) Support; (c), Pivoting arm; (d) Tool. Design spaces are in green, and non-design spaces in orange.

Cross-sections of each part with loads and boundary conditions are shown in Figure 7.

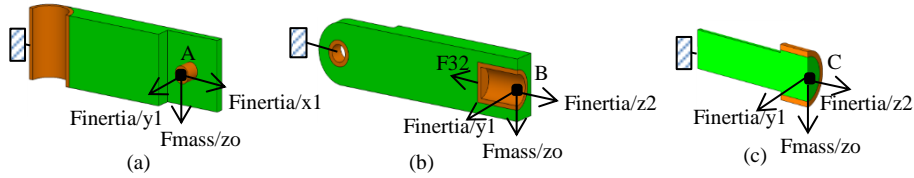


Figure 7. Boundary conditions applied on (a) Part 1, (b) Part 2, (c) Part 3

Paths identification

During its work, the robotic structure is permanently subjected to several types of loads like the grinding forces, or the inertial forces of moving masses (Mejri et al., 2016). The deflections of the structure under these loads are a source of defects for the grinding work that should be minimized. That is why the objective of this study is to use the TOL in order to reduce inertia. Three optimization paths are first proposed:

- (1) The part whose inertia (or mass) has the greatest impact on the mechanical behaviour is optimized first.
- (2) Beginning the TOL with the part that has a parameter involved in the highest number of equations.
- (3) All parts are optimized simultaneously.

The input torque T_{01} (see Equation (8) in the appendix) is chosen to be the mechanical behaviour data M_b used for the comparison of the several optimization paths.

The mathematical model used is proposed by (Bône et al., 1984). T_{ij} and F_{ij} represent respectively the torque and the force between part i and part j . $I_{p(L,\bar{m})}$ depicts the inertia of part p at point L around the axle m . All the equations are located in the appendix.

As shown in Table 1, the component 3 impacts the highest number of equations.

The input torque (see Equation (8) in the appendix) has been evaluated for initial characteristics. To determine which part has the highest impact, the reduced sensibility coefficient S^* of the Equation (3) is determined for each characteristic as shown in Table 2. The mass of arm 2 has the most important influence on the torque T_{01} .

Table 1. Feature which impacts the highest number of mechanical equations

Feature	Number of equations using the feature	Concerned equations
$I_{1(O,z0)}$ (kg.m ²)	1	T_{01}
$I_{2(H,x2)}$ (kg.m ²)	2	$T_{12}; T_{01}$
$I_{2(H,z2)}$ (kg.m ²)	2	$T_{12}; T_{01}$
m_2 (kg)	2	$F_{12}; T_{01}$
m_3 (kg)	4	$F_{23}; F_{12}; T_{12}; T_{01}$
$I_{3(G,x3)}$ (kg.m ²)	2	$T_{12}; T_{01}$
$I_{3(G,z2)}$ (kg.m ²)	3	$T_{23}; T_{12}; T_{01}$

Table 2. Inertia and mass sensibility evaluation

Characteristic C_i	m_2	m_3	$I_{1(O,z0)}$	$I_{2(H,x2)}$	$I_{2(H,z2)}$
$S^*(T_{01}/C_i) = C_i \cdot \frac{\partial T_{01}}{\partial C_i}$	0.34	0.21	0.03	0.05	0.03

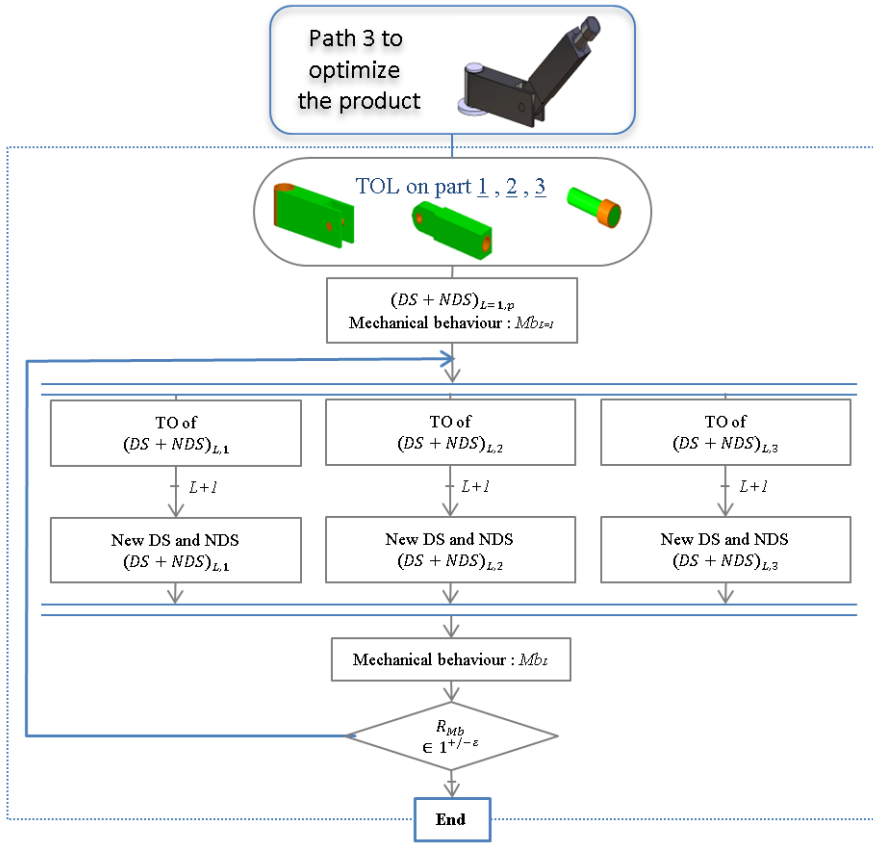
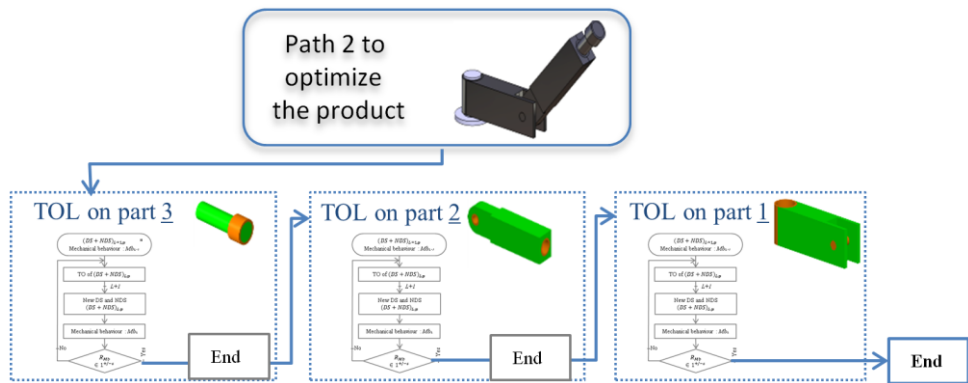
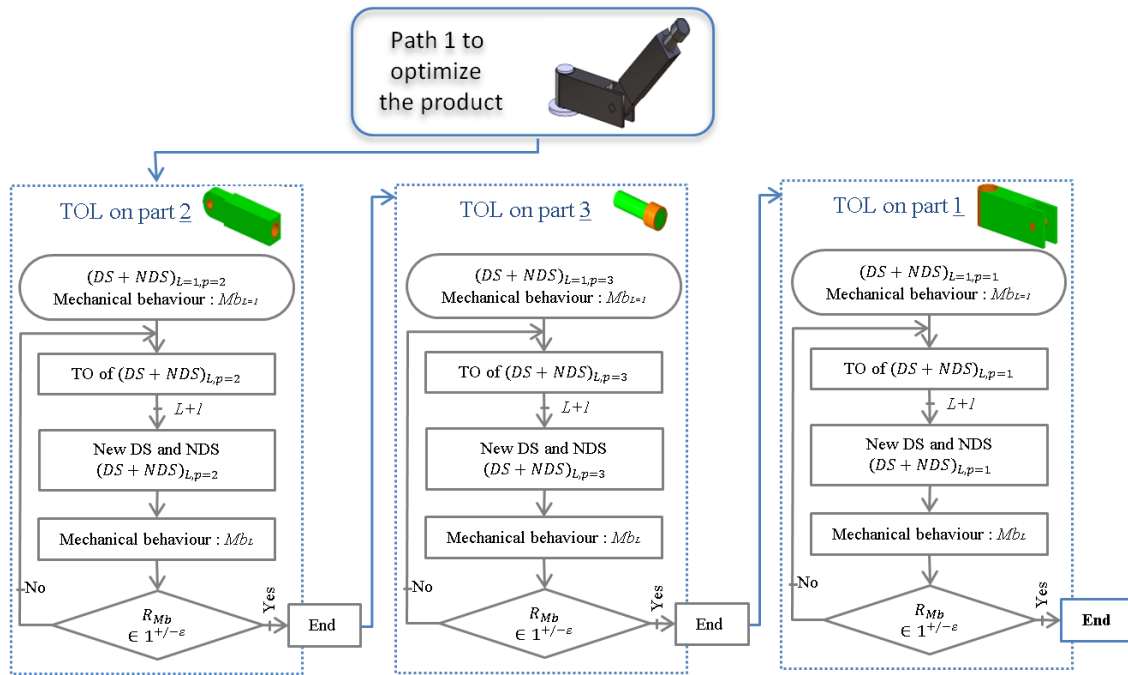


Figure 8. The three paths studied to optimize the product

To summarize, the first Path begins with part 2, and the second Path 2 with part 3. Figure 8 graphically summarizes the three paths.

For this study, the convergence coefficient ε is imposed at 0.1. The results are compared in terms of robot total mass, input torque T_{01} , and time used by the software to perform all the topological optimization iterations.

Other paths can be derived from these first three, like the two other possibilities shown in Figure 9. Path 4 is inspired from both Path 1 and Path 2, and consists in applying the TOL on parts 2 and 3 simultaneously and then on part 1.

As the mass of part 3 can be neglected, it has been chosen to not optimize this part in Path 5.

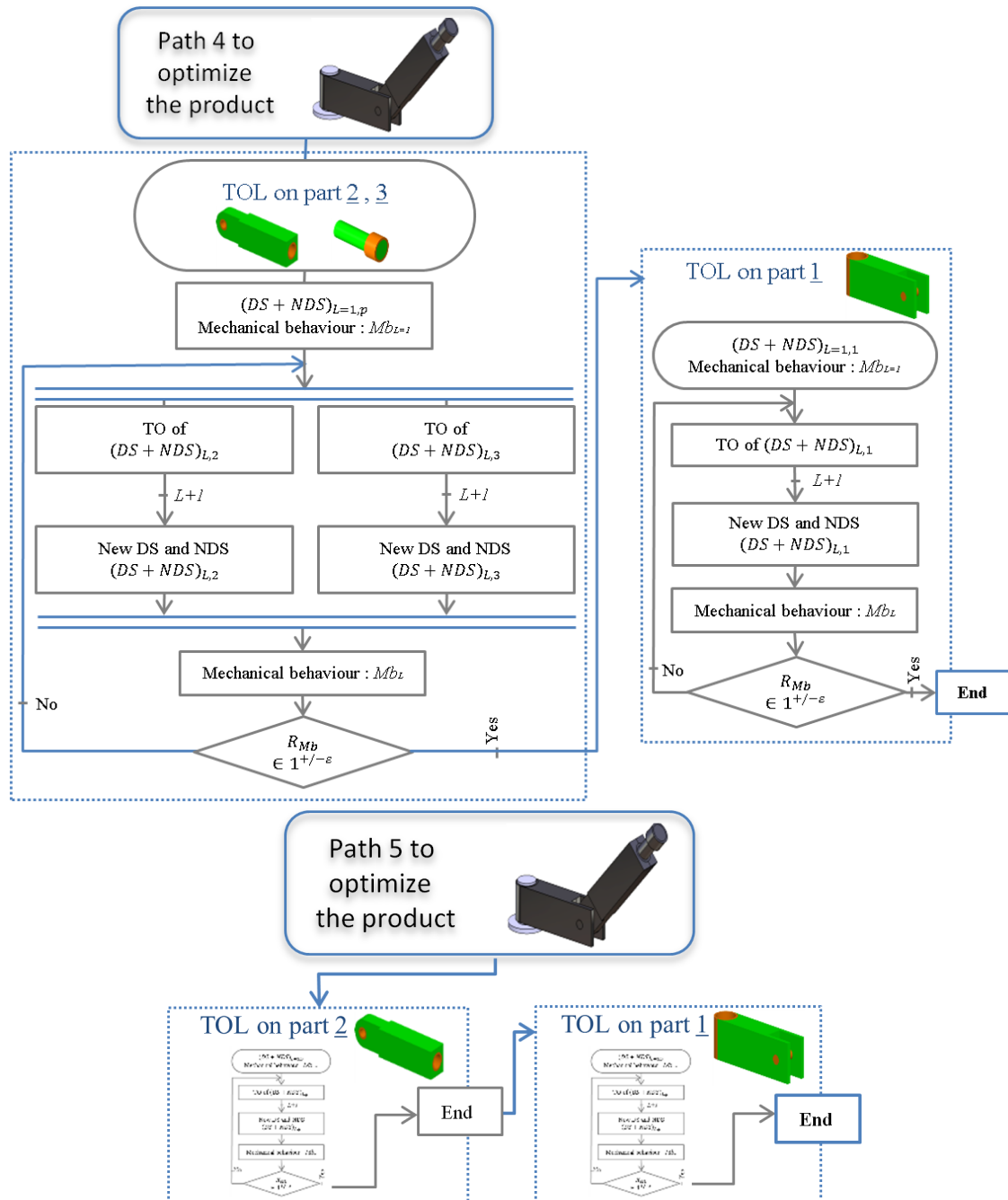


Figure 9. Derived paths to optimize the product

Details of the topological optimization paths

The topological optimization and CAD software used are respectively Optistruct and Inspire from Altair.

For each component, the TO objective is to minimize the mass with stress and displacement constraints. A static displacement constraint has been defined at points A, B and C for each part (the points are visible in Figure 7). This total displacement must not exceed 0.3 mm. For parts 1 and 2, (\vec{X}_1, \vec{Z}_0) is used as a symmetric plane (the axle is visible in the Figure 5). The tool holder 3 turns around the axle \vec{Z}_2 . As the loads follow the same direction, a circular repetition around the axle (7 repetitions) has been imposed.

It was determined to set the optimization parameters to 3 for the penalty factor and 6 for the related sensitivity filter called “mindim”. The mesh size is equal to 2 mm (except for part 3 due to its smaller size, where the mesh size is equal to 1 mm).

Finally, all the topological optimizations were performed on the same cluster. It is composed of two processors Xeon E5-2690/v2, each using ten cores of 25 Mo L3 with a frequency equal to 3 GHz. The RAM memory is equal to 256 Go.

Path 1: beginning with the most influential part (part 2)

The results are summarized in Table 3.

Table 3. Optimization results for Path 1

	TOL on part <u>2</u>		TOL on part <u>3</u>		TOL on part <u>1</u>	
Initial mass (g)	8000		1264		6970	
Loop number	loop1	loop2	loop1	loop2	loop1	loop2
R_{Mb}	2.12	1.05	2.43	1.04	1.23	1.02
Re-design mass value (g)	1055	768	274	246	1466	1130
Torque T_{01} (N.mm)	299	285	117	112	91	89
Loop time (h:min)	8:37	0:26	19:28	0:45	8:58	1:02
Total time (h:min)	39:19					

- TOL on part 2

The first loop has converged and all constraints have been satisfied after 44 iterations. With the initial design space, the input torque T_{01} is equal to 634 N.mm. The first optimization loop decreases this value to 299 N.mm. The resulting ratio equal to 2.12 has exceeded the limits specified in the previous section. So, a new loop is performed.

As explained previously, the design space used for the second loop is the result of the first loop. The second loop has converged and all constraints have been satisfied after 39 iterations. The ratio between the previous and new mechanical behaviour, equal to 1.05, is within the limits specified in the previous section. The optimization loops for part 2 have thus been finished. It can be noted that the re-design mass value is 12% less than the re-design mass value result with the initial design space, confirming the conclusions of the previous section. Then, new loads induced by mass and inertia of part 2 at the end of loop 2 are mandatory for the TOL of part 3.

- TOL on part 3

The first loop generates a ratio R_{Mb} equal to 2.43, which is beyond the limits. The ratio of the second loop remains within the limits.

- TOL on part 1

The ratio R_{Mb} required two loops to be within the limits.

Path 2: beginning with the component which impacts the highest quantity of equations (part 3)

All optimization loops have converged and all constraints have been satisfied. Taking into account the mechanical behaviour ratio, each part has required two loops, as shown in Table 4. For each part, the design space obtained after the first loop is used for the second loop.

Table 4. Optimization results for path 2

	TOL on part 3		TOL on part 2		TOL on part 1	
Initial mass (g)	1264		8000		6970	
Loop number	loop1	loop2	loop1	loop2	loop1	loop2
R_{Mb}	1.36	1.01	3.84	1.08	1.23	1.04
Re-design mass value (g)	274	246	926	749	1434	912
Torque T_{01} (N.mm)	466	461	120	112	91	88
Loop time (h:min)	19:28	0:45	10:20	0:32	7:48	1:09
Total time (h:min)	40:04					

Path 3: all parts simultaneously optimized

The results of Path 3 are summarized in Table 5. To obtain a value of R_{Mb} within the boundaries, three loops are necessary.

Table 5. Optimization results for path 3

	Initial	Loop 1	Loop 2	Loop 3
R_{Mb}	/	5.74	1.20	1.07
TOL on part 1. Mass (g)	6970	1616	1287	1133
TOL on part 2. Mass (g)	8000	1055	801	735
TOL on part 3. Mass (g)	1264	274	246	234
Torque T_{01} (N.mm)	634	110	92	86
Total time (h:min)	20:54			

Results analysis

Comparison of the results

As presented before, the results are different for each path. Figure 10 shows the re-designed products for each path and the results are summarized and compared in Table 6.

Without the TOL proposed previously, only one TO loop would have been performed. To verify the gains made by performing TOL, Table 6 shows the differences between a single topological optimization and the TOL results. Results prove that TOL produces significant gains in mass compared with one TO loop, and this, within the same amount of time in both instances.

Table 6. Results of each path and comparison between using a single topological optimization and using the TOL

	Optimization without TOL	Path 1	Path 2	Path 3	Path 4	Path 5	Gain between Path 3 and without TOL
Torque T_{01} (N.mm)	110	89	88	86	89	91	22%
Total mass (g)	2945	2143	1906	2102	1925	2668	29%
Total time (h:min)	19:28	39:19	40:04	20:54	28:37	18:52	-7%
Number of loops	1	2	2	3	2	2	/

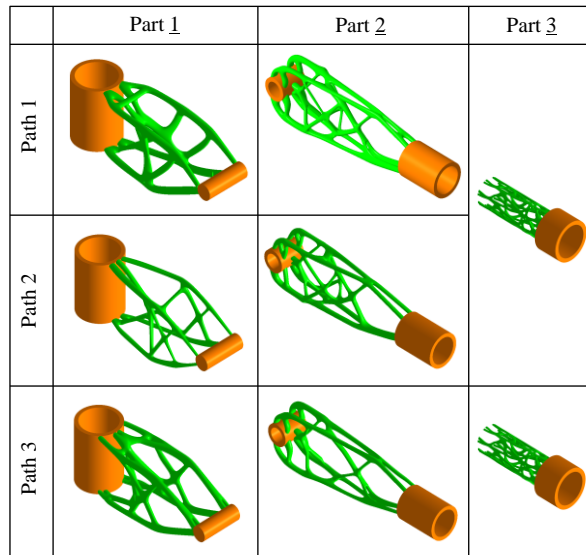


Figure 10. Robot arm optimized using the TOL for each path

It can be noted that the complex shapes of the robot arm so obtained cannot be manufactured by conventional processes. Using the Analytic Hierarchy Process (AHP) method proposed by (Mañanares et al., 2015), a powder bed fusion (PBF) process should be used as the most adapted AM process.

The total time is lower for Path 3 compared with Paths 1 and 2. Indeed, as the parts have been simultaneously optimized, the total CPU time is not the sum of the software time for each part optimization, but the sum of the maximum CPU time for each loop, as explained in Figure 11.

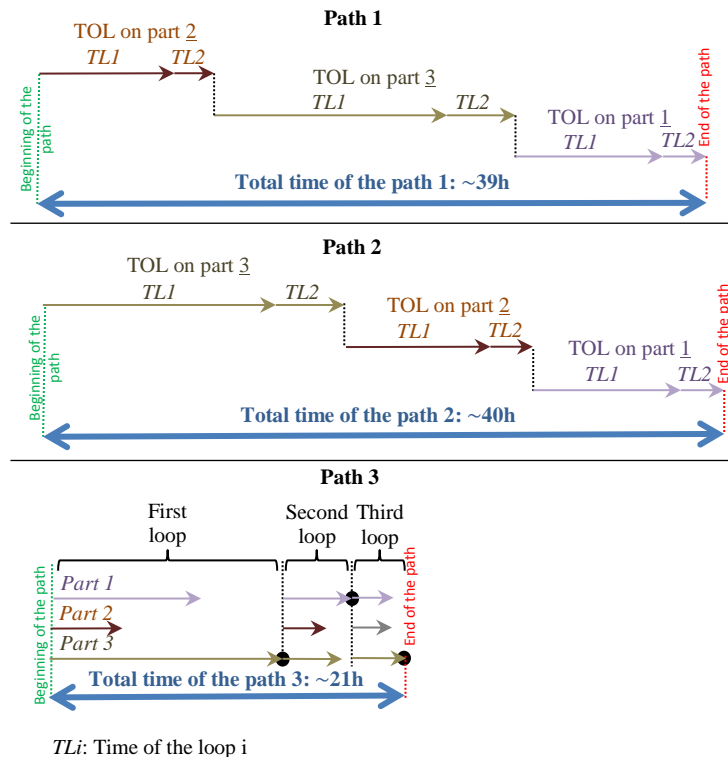


Figure 11. Comparison of the CPU times for the different paths

About the convergence coefficient ϵ

The convergence coefficient used for this case study is equal to 0.1. This means that the TOL scheme is ended if the mechanical behaviour of the new loop exceeds plus or minus 10% of the

previous one. The results of the different paths show that this value is wise and gives good results with few iterations.

Choosing a convergence coefficient close to zero will drastically increase the quantity of loops without effective results. Moreover, the low decrease in loads during the next iterations will reduce the potential gain at each new iteration.

On the contrary, choosing a high coefficient of convergence will reduce the quantity of loops, but the results may not be optimum. For example, using ϵ equal to 0.3 for the third path leads to only two loops (Table 7) but with a total robot mass increased by 11%. Likewise, the input torque has increased by 7%. In return, there is only a 3% savings in time.

Table 7. Impact of the convergence coefficient for Path 3

Path 3	$\epsilon=0.3$	$\epsilon=0.1$	$\epsilon=0.05$
Torque T01 (N.mm)	92	86	85
Total mass (g)	2334	2102	2051
Total time (h:min)	20:15	20:54	21:05
Number of loops	2	3	4

Figure 12 shows changes in the total mass and the R_{Mb} ratio as a function of the loop number for the path 3. The lower ϵ is, the more the R_{Mb} and the total mass tend towards an asymptotic ($R_{Mb}=1$ in orange on the graph in Figure 12). However, there is a significant gain when the slope is high. In conclusion, it is necessary to choose a reasonable value of ϵ to obtain a significant gain without loss of time. Thus it seems that the convergence coefficient should be included in the range [0.1; 0.2].

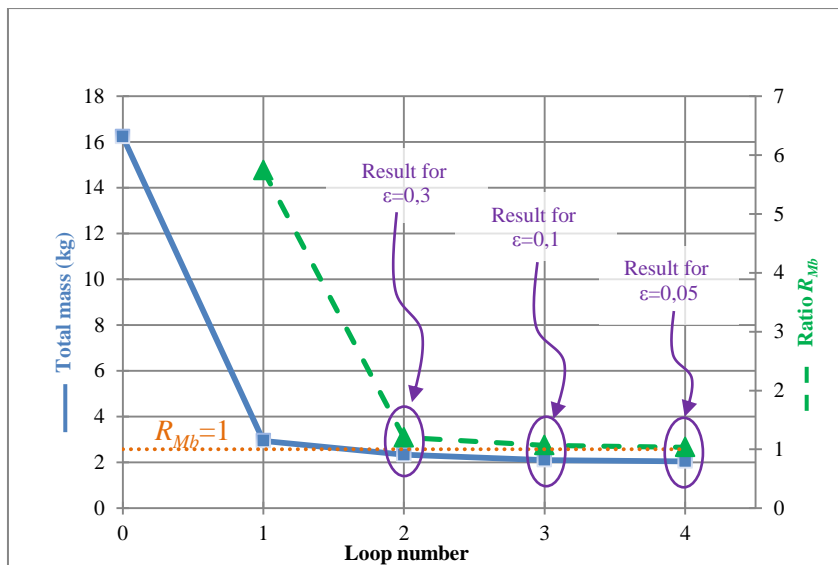


Figure 12. Mass and R_{Mb} evolution as a function of the number of loops for the Path 3

Principles to select a path for an additively manufactured multi-component product optimization

Each path has led to different results. Considering the designer objectives, the choice of the path can be different. A classification of the paths is suggested in Table 8.

First, it can be noticed that Path 1 has nearly no advantage. On the contrary, Path 3 seems to have the best numbers, especially to lead to the lowest input torque. Path 4 has one tenth of a gram more than Path 2; this is low enough to equalize them. Both enable the greatest decrease in mass. Lastly, if saving time is the primary objective, Path 5 has to be used.

Table 8. Ranking of the paths considering the objectives of the designer

	The objective is to reduce the		
	mass	torque	time
Path 1	3	3	4
Path 2	1	2	5
Path 3	2	1	2
Path 4	1	3	3
Path 5	4	4	1

1 represents the best path, 5 represents the worst.

Thanks to these results, the most effective path can be chosen to achieve the designer objectives. For this reason, three optimization principles can be concluded (for mechanisms without a closed-loop kinematic chain and to minimize the mass with stress as objective and displacement as constraints):

(1) To optimize a product with a minimum use of time:

- The part(s) with the least influence on the mechanical behaviour must not be optimized.
- The most influential part has to be optimized first.

(2) To optimize a product in order to obtain the best mechanical behaviour:

- All parts which impact the mechanical behaviour have to be optimized simultaneously.

(3) To optimize a product in order to obtain the lowest mass:

- The part whose mass is involved in the highest number of equations has to be optimized first.
- To reduce the length of time, the heaviest parts can be optimized simultaneously.

Conclusion

The case study presented in this article has resulted in the design of an optimized robot arm. More generally, the topological optimization loop (TOL) concept proposed in this article takes into account the decrease in mass and inertia during the topological optimization of a mechanical product. Even if the topology of the results may differ a little, the presented method is not software dependent. Indeed, the TO loop can be applied in the same way and the conclusions will be identical.

To perform an optimization on a multi-component product, the topological optimizations may be applied on the parts in different orders. Several optimization paths have been tested, leading to different results. Finally, for the case study examined in this report, using the TOL framework together with the best optimization path leads to an additional 35% gain in mass in comparison with a single topological optimization. Integrating the TOL framework in a Design for Additive Manufacturing (DfAM) method, will provide a rational and helpful tool for obtaining a mechanical system in which:

- material savings is achieved,
- the mass is lower,
- the dynamic behaviour is better,
- the joints between rigid bodies withstand lower loads,
- the input power can be decreased...

The choice of the design space for the successive optimization loops has also been studied. Using the density distribution result of the previous loop as the new design space seems to improve the results.

Finally, as the choice of the path must be made to achieve the designer objectives, three optimization principles have been stated, depending on the objective: minimizing the calculation time, obtaining the best mechanical behaviour or obtaining the lowest mass. Thus, following these recommendations will help designers to optimize a multi-component product.

The presented method is a convenient tool to design static or dynamic systems. However, it must be used for multi-component products in which mass and inertia have an impact on the mechanical behaviour. To complete this research, future work should focus on studying complex systems with closed-loop kinematic chains. Another perspective could be to conduct a similar study for other TO objectives and constraints.

Appendix

In this section the equations used for the case study are detailed. As explained previously, the mathematical model used is proposed by (Bône et al., 1984). T_{ij} and F_{ij} represent respectively the torque and the force applied between part i and part j . $I_{p(L,\bar{m})}$ depicts inertia of part p at point L around axis m (Figure 5).

$$(\vec{x}_0, \vec{x}_1) = (\vec{y}_0, \vec{y}_1) = \alpha \quad \text{Equation (5)}$$

$$(\vec{z}_0, \vec{z}_2) = (\vec{x}_1, \vec{x}_2) = \beta \quad \text{Equation (6)}$$

$$(\vec{x}_2, \vec{x}_3) = (\vec{y}_1, \vec{y}_3) = \gamma \quad \text{Equation (7)}$$

$$T_{01} = \frac{d}{dt} \left[\{I_{1(O,\vec{z}_0)} + (I_{2(H,\vec{x}_2)} + I_{3(G,\vec{x}_3)}) \cdot \sin^2\beta + (I_{2(H,\vec{z}_2)} + I_{3(G,\vec{z}_2)}) \cdot \cos^2\beta + m_2 \cdot h^2 + m_3 \cdot (h + r \cdot \sin\beta)^2\} \cdot \dot{\alpha} + I_{3(G,\vec{z}_2)} \cdot \dot{\gamma} \cdot \cos\beta \right] \quad \text{Equation (8)}$$

$$T_{12} = (I_{2(H,\vec{y}_2)} + I_{3(G,\vec{x}_3)} + m_3 \cdot r^2) \cdot \ddot{\beta} + \{(I_{2(H,\vec{z}_2)} + I_{3(G,\vec{z}_2)} - I_{2(H,\vec{x}_2)} - I_{3(G,\vec{x}_3)}) \cdot \dot{\alpha} \cdot \cos\beta + I_{3(G,\vec{z}_2)} \cdot \dot{\gamma}\} \cdot \dot{\alpha} \cdot \sin\beta - m_3 \cdot r \cdot [(h + r \cdot \sin\beta) \cdot \dot{\alpha}^2 \cdot \cos\beta + g \cdot \sin\beta] \quad \text{Equation (9)}$$

$$T_{23} = \frac{d}{dt} [I_{3(G,\vec{z}_2)} \cdot (\dot{\gamma} + \dot{\alpha} \cdot \cos\beta)] \quad \text{Equation (10)}$$

$$F_{23} = m_3 \cdot [g \cdot \cos\beta - r \cdot \dot{\beta}^2 - (h + r \cdot \sin\beta) \cdot \dot{\alpha}^2 \cdot \sin\beta] \quad \text{Equation (11)}$$

$$F_{21} = (\ddot{\alpha} \cdot t)^2 \cdot h \cdot \left(\frac{3 \cdot m_2}{2} + 2 \cdot m_3\right) \quad \text{Equation (12)}$$

$$\overline{OH} = h \cdot \vec{x}_1 \quad \text{Equation (13)}$$

$$\overline{HG} = r \cdot \vec{z}_2 \quad \text{Equation (14)}$$

h and r are constant.x

References

- Altair University. (2015). *Practical Aspects of Structural Optimization - A study guide*.
- Aremu, A., Ashcroft, I., Hague, R., Wildman, R., & Tuck, C. (2010). Suitability of SIMP and

BESO Topology Optimization Algorithms for Additive Manufacture. *Twenty First Annual International Solid Freeform Fabrication Symposium*, 679–692.

- Barbieri, S. G., Giacomini, M., Mangeruga, V., & Mantovani, S. (2017). A design strategy based on topology optimization techniques for an additive manufactured high performance engine piston. *Procedia Manufacturing*, *11*, 641–649.
- Bendsøe, M. P. (1995). *Optimization of Structural Topology, Shape, and Material*.
- Bendsøe, M. P., & Sigmund, O. (1999). Material interpolation schemes in topology optimization. *Archive of Applied Mechanics*, *69*(9–10), 635–654.
- Bône, J.-C., Morel, J., & Boucher, M. (1984). *Mécanique générale: cours et applications*.
- Brackett, D., Ashcroft, I., & Hague, R. (2011). Topology optimization for additive manufacturing. *Proceedings of the Solid Freeform Fabrication Symposium, Austin, TX.*, 348–362.
- Chu, S., Xiao, M., Gao, L., Li, H., Zhang, J., & Zhang, X. (2019). Topology optimization of multi-material structures with graded interfaces. *Computer Methods in Applied Mechanics and Engineering*, *346*, 1096–1117.
- Eschenauer, H. A., & Olhoff, N. (2001). Topology optimization of continuum structures: A review. *Applied Mechanics Reviews*, *54*(4), 331.
- Goelke, M. (2016). 5 ways to rethink optimization.
- Guo, X., & Cheng, G.-D. (2010). Recent development in structural design and optimization. *Acta Mechanica Sinica*, *26*(6), 807–823.
- Hällgren, S., Pejryd, L., & Ekengren, J. (2016). (Re)Design for Additive Manufacturing. *Procedia CIRP*, *50*, 246–251.
- Han, P. (2017). Additive design and manufacturing of jet engine parts. *Engineering*, *3*(5), 648–652.
- Hodonou, C., Balazinski, M., Brochu, M., & Mascle, C. (2019). Material-design-process selection methodology for aircraft structural components: application to additive vs subtractive manufacturing processes. *International Journal of Advanced Manufacturing Technology*, 1–9.
- Hsu, M.-H., & Hsu, Y.-L. (2005). Interpreting three-dimensional structural topology optimization results. *Computers and Structures*, *83*(4–5), 327–337.
- Hsu, Y.-L., Hsu, M.-S., & Chen, C.-T. (2001). Interpreting results from topology optimization using density contours. *Computers and Structures*, *79*(10), 1049–1058.
- Kim, H., Querin, O. M., & Steven, G. P. (2002). On the development of structural optimization and its relevance in engineering design. *Design Studies*, *23*(1), 85–102.
- Krishna, L. S. R., Mahesh, N., & Sateesh, N. (2017). Topology optimization using solid isotropic material with penalization technique for additive manufacturing. *Materials Today: Proceedings*, *4*(2), 1414–1422.
- Liu, J., Gaynor, A. T., Chen, S., Kang, Z., Suresh, K., Takezawa, A., ... To, A. C. (2018). Current and future trends in topology optimization for additive manufacturing. *Structural and Multidisciplinary Optimization*, *57*(6), 2457–2483.
- Mançanares, C. G., de S. Zancul, E., Cavalcante da Silva, J., & Cauchick Miguel, P. A. (2015).

Additive manufacturing process selection based on parts' selection criteria. *The International Journal of Advanced Manufacturing Technology*, 80(5–8), 1007–1014.

- Mancuso, A., Pitarresi, G., Saporito, A., & Tumino, D. (2019). Topological optimization of a structural naval component manufactured in FDM. *Advances on Mechanics, Design Engineering and Manufacturing II*, 2, 451–462.
- Mejri, S., Gagnol, V., Le, T. P., Sabourin, L., Ray, P., & Paultre, P. (2016). Dynamic characterization of machining robot and stability analysis. *International Journal of Advanced Manufacturing Technology*, 82(1–4), 351–359.
- Micheletti, S., Perotto, S., & Soli, L. (2019). Topology optimization driven by anisotropic mesh adaptation: Towards a free-form design. *Computers and Structures*, 214, 60–72.
- Morretton, E., Vignat, F., Pourroy, F., & Marin, P. (2019). Impacts of the settings in a design for additive manufacturing process based on topological optimization. *International Journal on Interactive Design and Manufacturing (IJIDeM)*, 13(1), 295–308.
- Munk, D. J., Auld, D. J., Steven, G. P., & Vio, G. A. (2019). On the benefits of applying topology optimization to structural design of aircraft components. *Structural and Multidisciplinary Optimization*, 1–22.
- Obaton, A.-F., Bernard, A., Taillandier, G., & Moschetta, J.-M. (2015). Fabrication additive : état de l'art et besoins métrologiques engendrés. *Revue Française de Métrologie*, 2015–1(37), 21–36.
- Orquéra, M., Campocasso, S., & Millet, D. (2017). Design for additive manufacturing method for a mechanical system downsizing. *Procedia CIRP*, 60, 223–228.
- Petit, D., & Maillet, D. (2008). Techniques inverses et estimation de paramètres. Partie 1. *Techniques de l'ingénieur*, 33, 1–18.
- Ponche, R., Kerbrat, O., Mognol, P., & Hascoet, J. Y. (2014). A novel methodology of design for Additive Manufacturing applied to Additive Laser Manufacturing process. *Robotics and Computer-Integrated Manufacturing*, 30(4), 389–398.
- Pradel, P., Zhu, Z., Bibb, R., & Moultrie, J. (2018). A framework for mapping design for additive manufacturing knowledge for industrial and product design. *Journal of Engineering Design*, 29(6), 291–326.
- Ren, S., & Galjaard, S. (2015). Topology optimisation for steel structural design with additive manufacturing. In *Modelling Behaviour* (pp. 35–44). Springer Cham.
- Rodrigue, H., & Rivette, M. (2010). An assembly-level design for additive manufacturing methodology. *IDMME - Virtual Concept*, 1–9.
- Rozvany, G. I. N., Zhou, M., & Birker, T. (1992). Generalized shape optimization without homogenization. *Structural Optimization*, 4(3–4), 250–252.
- Saadlaoui, Y., Milan, J. L., Rossi, J. M., & Chabrand, P. (2017). Topology optimization and additive manufacturing: Comparison of conception methods using industrial codes. *Journal of Manufacturing Systems*, 43, 178–186.
- Sossou, G., Demoly, F., Montavon, G., & Gomes, S. (2018). An additive manufacturing oriented design approach to mechanical assemblies. *Journal of Computational Design and Engineering*, 5(1), 3–18.
- Tang, Y., & Zhao, Y. F. (2014). Design method for lattice-skin structure fabricated by additive

manufacturing. *ASME. ASME International Mechanical Engineering Congress and Exposition, Volume 2B*, V02BT02A030.

- Tang, Y., & Zhao, Y. F. (2016). A survey of the design methods for additive manufacturing to improve functional performance. *Rapid Prototyping Journal*, 22(3), 569–590.
- Thompson, M. K., Moroni, G., Vaneker, T., Fadel, G., Campbell, R. I., Gibson, I., Bernard, A., Schulz, J., Graf, P., Ahuja, B., & Martina, F. (2016). Design for additive manufacturing: trends, opportunities, considerations, and constraints. *CIRP Annals - Manufacturing Technology*, 65, 737–760.
- Tomlin, M., & Meyer, J. (2011). Topology optimization of an Additive Layer Manufactured (ALM) aerospace part. *Proceeding of the 7th Altair CAE Technology Conference*, 1–9.
- Vayre, B., Vignat, F., & Villeneuve, F. (2012). Designing for additive manufacturing. *Procedia CIRP*, 3(1), 632–637.
- Walton, D., & Mozarzadeh, H. (2017). Design and development of an additive manufactured component by topology optimisation. *Procedia CIRP*, 60, 205–210.
- Zhang, Y., Xiao, M., Li, H., Gao, L., & Chu, S. (2018). Multiscale concurrent topology optimization for cellular structures with multiple microstructures based on ordered SIMP interpolation. *Computational Materials Science*, 155, 74–91.
- Zhou, M., Pagaldipti, N., Thomas, H. L., & Shyy, Y. K. (2004). An integrated approach to topology, sizing, and shape optimization. *Structural and Multidisciplinary Optimization*, 26(5), 308–317.
- Zhou, M., & Rozvany, G. I. N. (1991). The COC algorithm, Part II: Topological, geometrical and generalized shape optimization. *Computer Methods in Applied Mechanics and Engineering*, 89(1–3), 309–336.