



HAL
open science

Transcriptomics supports local sensory regulation in the antenna of the kissing-bug *Rhodnius prolixus*

Jose Manuel Latorre-Estivalis, Marcos Sterkel, Sheila Ons, Marcelo G. Lorenzo

► To cite this version:

Jose Manuel Latorre-Estivalis, Marcos Sterkel, Sheila Ons, Marcelo G. Lorenzo. Transcriptomics supports local sensory regulation in the antenna of the kissing-bug *Rhodnius prolixus*. *BMC Genomics*, 2020, 21 (1), pp.101. 10.1186/s12864-020-6514-3 . hal-02506337

HAL Id: hal-02506337

<https://hal.science/hal-02506337>

Submitted on 12 Mar 2020

HAL is a multi-disciplinary open access archive for the deposit and dissemination of scientific research documents, whether they are published or not. The documents may come from teaching and research institutions in France or abroad, or from public or private research centers.

L'archive ouverte pluridisciplinaire **HAL**, est destinée au dépôt et à la diffusion de documents scientifiques de niveau recherche, publiés ou non, émanant des établissements d'enseignement et de recherche français ou étrangers, des laboratoires publics ou privés.



Distributed under a Creative Commons Attribution 4.0 International License

1 **Running title:** Local modulation in *R. prolixus* antennae

2 **Transcriptomics supports local sensory regulation in the antenna of the kissing bug**

3 ***Rhodnius prolixus***

4 **Jose Manuel Latorre-Estivalis^{1,2§}; Marcos Sterkel²; Sheila Ons²; and Marcelo Gustavo Lorenzo¹**

5 (1) Vector Behaviour and Pathogen Interaction Group, Instituto René Rachou - FIOCRUZ, Belo Horizonte,
6 Minas Gerais, Brazil. Current address: Laboratorio de Neurobiología de Insectos - Centro Regional de
7 Estudios Genómicos – CREG, Universidad Nacional de La Plata, La Plata, Buenos Aires, Argentina.

8 (2) Laboratorio de Neurobiología de Insectos - Centro Regional de Estudios Genómicos – CREG, Universidad
9 Nacional de La Plata, La Plata, Buenos Aires, Argentina.

10 [§]Corresponding author Jose Manuel Latorre Estivalis: josemlatorre@conicet.gov.ar

11 **ABSTRACT**

12 *Rhodnius prolixus* has become a model for revealing the molecular bases of insect sensory biology due to
13 the publication of its genome, its well characterized behavioural repertoire and the advent of NGS
14 technologies. Gene expression modulation underlies behaviour-triggering processes at peripheral and
15 central levels. Still, the regulation of sensory-related gene transcription in sensory organs is poorly
16 understood. Here we study the genetic bases of plasticity in antennal sensory function, using *R. prolixus* as
17 an insect model. Antennal expression of neuromodulatory genes such as those coding for neuropeptides,
18 neurohormones and their receptors was characterized by means of RNA-Seq. New nuclear receptor and
19 *takeout* gene sequences were identified for this species, as well as those of enzymes involved in the
20 biosynthesis and processing of neuropeptides and biogenic amines. We report a broad repertoire of
21 neuromodulatory and endocrine genes expressed in antennae and suggest that they modulate sensory
22 neuron function locally. Diverse neuropeptide-coding genes showed consistent expression in the antennae
23 of all stages studied. Future studies should characterize the contribution of these modulatory components
24 acting over antennal sensory processes to assess the relative contribution of peripheral and central
25 regulatory systems on the plastic expression of insect behaviour.

26 Key words: antennae, transcriptomics, kissing-bugs, neuropeptides

27 1. INTRODUCTION

28 *Rhodnius prolixus* has been an important insect model for neuroethological studies for many decades
29 (Barrozo et al., 2016; Wigglesworth and Gillett, 1934). Relevant aspects of its neuroethology, such as host
30 odour-mediated behaviour (Guerenstein and Lazzari, 2009; Manrique and Lorenzo, 2012), circadian
31 modulation (Lazzari, 1992), the action of biogenic amines and neuropeptides (Orchard, 2006) or the
32 expression of behavioural plasticity (Bodin et al., 2009a; Vinauger et al., 2016) have been thoroughly
33 studied. Recently, molecular processes related to sensory function have been characterized for *R. prolixus*,
34 such as the tissue-specific expression profiles of odorant receptor genes (Latorre-Estivalis et al., 2015a) and
35 related changes associated to development and nutrition (Latorre-Estivalis et al., 2015b). Additionally,
36 neuropeptide precursor genes were described for *R. prolixus* (Ons et al., 2009) and the dynamics of
37 neuropeptide expression or release at diverse physiological conditions were characterized for processes
38 such as feeding or ecdysis (Sterkel et al., 2011; Wulff et al., 2017). Based on the current knowledge on its
39 behaviour and physiology, and the recent publication of its genome sequence, it is reasonable to suggest
40 that *R. prolixus* has become an appropriate model for revealing the molecular bases of neuroethological
41 processes in insects. Furthermore, neuroethological research in kissing-bug insects is of medical interest
42 given their role as vectors of *Trypanosoma cruzi*, the causative agent of Chagas' disease, which is
43 considered a neglected disease affecting over 8 million people worldwide
44 (<http://www.who.int/chagas/disease/en/>).

45 Kissing-bug antennae are multimodal sensory organs dedicated to detect diverse stimuli associated to hosts
46 (Guerenstein and Lazzari, 2009), microenvironmental features and intraspecific communication (Barrozo et
47 al., 2016). The physiological bases of sensory processes sit on receptor neurons that express specific
48 membrane proteins that confer them an ability to react to specific stimuli present in the environment.
49 These neurons are mostly found in tiny hair-like structures called sensilla, which can house from one to
50 several dozen sensory cells (Carey and Carlson, 2011). In a recent study, the expression of sensory-receptor
51 coding genes was characterized in *R. prolixus* antennae by means of RNA-Seq (Latorre-Estivalis et al., 2017).
52 Therefore, the antennal expression of a large set of genes related to diverse stimulus transduction
53 processes was reported (chemoreceptors, odorant binding proteins - OBPs, chemosensory proteins - CSPs,

54 transient receptor potential - TRP channels and pick pockets - PPKs receptors) (Latorre-Estivalis et al.,
55 2017).

56 The triggering of behaviors as a response to relevant external stimuli can be modulated at peripheral and
57 central levels (Gadenne et al., 2016). Insect behavior shows plasticity depending on age, physiological
58 status (i.e., phase of daily cycle, nutritional or reproductive status) and experience (Gadenne et al., 2016).
59 For instance, mature kissing-bugs seek host cues promptly, but they do not express proper host-seeking
60 behaviour during the first week after ecdysis (Bodin et al., 2009b) or after engorgement (Bodin et al.,
61 2009a). Electroantennography and single sensillum recordings performed on different insect species have
62 reported a high degree of physiological plasticity at sensory levels (Kromann et al., 2015; Qiu et al., 2006),
63 at least partially explaining behavioral changes triggered by feeding or development. Similar changes have
64 been documented at the molecular level, with altered gene expression associated to feeding (Bonizzoni et
65 al., 2011) or age (Bohbot et al., 2013). In fact, variations in gene expression depending on nutritional status
66 or development have been described for olfactory correceptors in the antennae of *R. prolixus* (Latorre-
67 Estivalis et al., 2015b). Nevertheless, information about elements regulating sensory gene transcription and
68 the abundance of the corresponding proteins in insect peripheral organs is very limited (Farhan et al., 2013;
69 Jung et al., 2013; Kwon et al., 2016; Lee et al., 2017). Physiological mechanisms modulating peripheral
70 responses to sensory stimuli involve signaling controlled by biogenic amines, hormones, and
71 neuropeptides, as well as their target G-protein coupled receptors (GPCRs) and nuclear receptors, overall
72 controlling the functional status of sensory processes (Gadenne et al., 2016). The main objective of this
73 study is to characterize modulatory components potentially involved in the local regulation of antennal
74 sensory function using *R. prolixus* as a model insect. For this purpose, we characterized the expression of a
75 diverse set of genes known for their neuromodulatory and endocrine roles in the antennae of 5th instar
76 larvae and adults of *R. prolixus* by means of RNA-Seq.

77 2. MATERIAL AND METHODS

78 2.1 Transcriptomic data analysis

79 Read sequences and *de novo* assemblies were obtained from Latorre-Estivalis et al. (2017). In this study,
80 three antennal transcriptomes of unfed 21 day-old 5th instar larvae and female and male adults from *R.*
81 *prolixus* (colony originated from Honduras and held at the Centro de Pesquisas René Rachou – FIOCRUZ)
82 were obtained. A total of sixty antennae were collected per sample and used for RNA extraction for
83 subsequent RNA-Seq library preparation and sequencing as described in Latorre-Estivalis et al. (2017).
84 Briefly, sequencing was performed at the W. M. Keck Centre for Comparative and Functional Genomics
85 (University of Illinois at Urbana-Champaign, IL, USA) on an Illumina HiSeq2000 from both ends to a total
86 read length of 100 nucleotides. Read sequences were obtained from PRJNA281760/SRP057515 project at
87 NCBI, which contains data from the three conditions analysed: SRS923612/SRX1011796/SRR2001242
88 (antennal library from larvae); SRS923595/SRX1011769/SRR2001240 (antennal library from female adults);
89 and SRS923599/SRX1011778/SRR2001241 (antennal library from male adults). Reads were mapped to the
90 *R. prolixus* genome assembly (version RproC3) by means of STAR v.2.6.0 (Dobin et al., 2013) and an edited
91 genome GFF file. Raw read counts were used for differential expression analyses among stages and
92 between sexes using the edgeR (v3.6.8). The FDR adjusted p-value (False Discovery Rate) <0.1 was set as
93 threshold to define the significance level. Heat maps showing gene expression (expressed as Fragments Per
94 Kilobase Million - FPKM value +1 following by Log10 transformation) of the different protein families in the
95 conditions tested were prepared using the gplot package in R.

96 2.2 Manual gene curation

97 Manual curation of genome project databases by means of the inclusion and correction of gene models,
98 using transcriptomic data and published studies, is fundamental for increasing database quality. The use of
99 reliable genome databases, which need to be as complete and validated as possible, is especially relevant
100 for performing adequate quantitative transcriptomic and functional genetic studies. Most of the target
101 sequences curated herein were obtained from Ons et al. (2011); Ons et al. (2016); Ons (2017); Mesquita et
102 al. (2015); and Yeoh et al. (2017) (details in Supplementary Tables S1 and S2). Therefore, all sequences
103 were compared to the SOAPdenovo and Trinity generated antennal assemblies from Latorre-Estivalis et al.

104 (2017). The discrepancies observed between target gene models from the *R. prolixus* genome (Gene set:
105 RproC3.3, available on 24 Oct 2017) and the transcripts from the *de novo* antennal assemblies are reported
106 in Supplementary Tables S1-S6. In the case of neuropeptide precursor and GPCRs genes that were manually
107 corrected/extended, new Generic Feature Format (GFF) files were created and included in the RproC3.3
108 version of the *R. prolixus* genome GFF file. In case of the other gene families, new gene models were
109 created only for those genes that were absent from the VectorBase gene prediction database or those
110 whose gene models were partially constructed. The modified GFF file of the genome was used for read
111 mapping. The protein sequences of all genes analysed and the edited GFF file are included in the
112 Supplementary Material (Database S1 and Database S2, respectively).

113 2.3 Identification of new genes

114 Orthologous sequences from *D. melanogaster* (Pauls et al., 2014; Velarde et al., 2006) were used in
115 tBLASTn searches in the *R. prolixus* genomic database (www.vectorbase.org) to identify nuclear receptor
116 genes and enzymes related to prepropeptide/preproprotein processing. Sequences of *takeout* (*to*) genes
117 previously annotated for *R. prolixus* (Mesquita et al., 2015) were used as query to search for new
118 sequences in the genome. Subsequently, all sequences were manually corrected/extended according to our
119 *de novo* antennal transcriptomes and annotated based on their phylogenetic relations to other insect
120 sequences. In addition, the structural characteristics of *to* genes, such as the presence of a signal peptide
121 (detected by means of SignalP 4.0 (Petersen et al., 2011)); of two conserved cysteine residues in the amino
122 terminal region implicated in disulfide bond formation and ligand binding (Touhara et al., 1993); and of two
123 conserved motifs (So et al., 2000) were confirmed in *R. prolixus to* sequences

124 2.4 Phylogenetic analysis

125 For building the phylogenetic trees, protein sequences of *R. prolixus* and other insect species were aligned
126 using G-INS-I strategy in MAFFT v.7 (mafft.cbrc.jp/alignment/server), and manually edited in Jalview v2.6.1.
127 Finally, maximum likelihood trees were built in PhyML v.3.0. Branch support was determined using the
128 approximate Likelihood Ratio Test (aLRT). Non-parametric branch support based on the Shimodaira-
129 Hasegawa-like (SH) procedure

130

131 3. RESULTS

132 3.1 Manual gene curation

133 3.1.1 Neuropeptide and neurohormone precursor genes

134 A total of 17 neuropeptide precursor gene models that were absent from the RproC3.3 version of the *R.*
135 *prolixus* genome annotation were included in the genome GFF file (Supplementary Table S1). The long
136 neuropeptide F (LNPF) and orcokinin (OK) predictions were corrected according to Sedra and Lange (2016)
137 and Sterkel et al. (2012), respectively. The RYamide gene model was fixed based on our antennal
138 transcriptomes. Besides, IDLSRF-like peptide, glycoprotein hormones alpha-2 (GPA2) and beta-5 (GPB5),
139 and bursicon-beta (also known as partner of bursicon) genes were identified in the *R. prolixus* genome. A
140 new isoform of the *R. prolixus* adipokinetic hormone (AKH) gene, originated through alternative splicing,
141 was identified in the antennal assemblies (Supplementary Table S1). Both AKH isoforms share the signal
142 peptide and the active conserved peptide, but differ in the C-terminal region. Whereas the previously
143 reported isoform encodes the core peptide and a single spacer peptide, the isoform presented here
144 encodes the core peptide and two non-conserved spacer peptides. The gene models of eclosion hormone
145 (EH); ion transport peptide (ITP) isoform A; NVP-like; orcokinin-B; and orcokinin-C remained incomplete
146 because it was impossible to fix them due to problems in the genome assembly, e.g. some fragments were
147 located in the opposite strand or were absent from the genome assembly (Supplementary Table S1).

148 3.1.2 G-protein coupled receptors

149 Most of the biogenic amine-related GPCR gene models were edited (Supplementary Table S2). However,
150 many of these genes models are still incomplete. In the case of Family A neuropeptide receptor genes, a
151 total of 15 gene models based on Ons [40] were included in the GFF file of the *R. prolixus* genome
152 (Supplementary Table S2). Besides, 11 gene models of this receptor family were edited in the existing GFF
153 file of the genome. Two isoforms (alfa and beta) of the Corazonin (CZ) receptor gene were described
154 Hamoudi et al. (2016). Nevertheless, our antennal transcriptome only presented the alfa isoform (GenBank
155 Acc. N° AND99324). A second kinin receptor (previously described as an orphan receptor by Ons et al.
156 (2016)) and a Tachykinin 86C-like receptor were identified. Most of the Family B neuropeptide receptor
157 gene models were also fixed (Supplementary Table S2). A phylogenetic tree was built to annotate both the

158 calcitonin-like (CT) and the corticotropin-releasing factor-related like (CRF) diuretic hormone (DH) receptors
159 (Supplementary Fig. 1S). Two CT/DH-like receptors were previously described in *R. prolixus* by Zandawala et
160 al. (2013): receptor 1 and receptor 2, the ortholog of *D. melanogaster hector* gene (FlyBase Acc. Number
161 CG4395). The resulting phylogenetic tree suggested that a third CT/DH like-receptor previously described
162 by Ons et al. (2016) seems to be exclusive of heteropteran insects (Supplementary Fig. S1). The CRF/DH-like
163 receptors 1 and 2 (including isoforms 2A and 2B) were grouped in a different clade as shown in Zandawala
164 et al. (2013).

165 3.1.3 Biogenic amine biosynthesis enzymes

166 All enzymes known to mediate biogenic amine biosynthesis in other insects were annotated in the last
167 version of the *R. prolixus* genome (Mesquita et al., 2015); however, minor changes would be needed to fix
168 some of them (Supplementary Table S3). These models include: 1) Tyrosine 3-monooxygenase (ple), which
169 synthesizes dopamine from L-tyrosine; 2) DOPA decarboxylase (Ddc), involved in the synthesis of dopamine
170 from L-DOPA; 3) Tyrosine decarboxylase-2 (Tdc2), which participates on synthesis of tyramine from L-
171 tyrosine and; 4) Tryptophan hydroxylase (Trh), which synthesizes serotonin from L-tryptophan.

172 3.1.4 Neuropeptide processing enzymes

173 The neuropeptide processing enzymes were not previously annotated in the *R. prolixus* genome (Mesquita
174 et al., 2015). Using sequences from *Drosophila* as queries, we were able to identify a total of 9 enzyme
175 genes that seem to correspond to *R. prolixus* orthologues (Supplementary Table S4). The processing of
176 neuropeptides involves the following enzymes: 1) signal peptidase (SP), which cleaves the signal peptides
177 from their N-terminals; 2) three members of the furin subfamily (dFUR1, dFUR2a and dFUR2b), which are
178 Subtilisin-like endoproteases that cleave the propeptide at monobasic (Arg) and dibasic (Arg-Arg/Lys-Arg)
179 sites; 3) prohormone convertase 2 (*amontillado* or PC2), which cleaves mono (Arg) and dibasic (Arg-Arg;
180 Lys-Arg; Arg-Lys; Lys-Lys) sites; 4) the carboxypeptidase M (two new isoforms were identified in the
181 antennal assemblies with differences in the 3' region) and D (known as *silver*, which trims C-terminal Arg
182 and Lys after Furins/PC2 cleavage reaction); 5) the PHM (Peptidylglycine alfa-hydroxylating mono-
183 oxygenase) amidating enzyme, which is responsible for the alpha-amidation of the peptide C-terminal; 6) a
184 prolyl endoprotease belonging to the Peptidase 9 protein family, for which no functional information is

185 available for insects (Supplementary Table S4); 7) the amidating enzymes, the peptidyl alfa-hydroxyglycine
186 alfa-amidating lyase (PAL) 1 and 2.

187 3.1.5 Nuclear receptors

188 The ecdysone receptor (*Eip75B*) gene was the only annotated nuclear receptor in the *R. prolixus* genome
189 so far (Mesquita et al., 2015); however, no information about isoforms was included in the annotation. In
190 the antennal assemblies, the sequence of the *RproEip75B* was identified using *DmelEip75B* and posteriorly
191 compared to the VectorBase prediction. This comparison allowed correcting the VectorBase prediction and
192 identifying it as isoform A (by means of the two distinctive exons in the N-terminal-region) and the antennal
193 sequence as isoform B (with the first exon located in the second intron of the A isoform)(Segraves and
194 Hogness, 1990). Besides *RproEi75B*, a total of 20 nuclear receptor genes were identified (Supplementary
195 Table S5) and annotated based on their phylogenetic relations to those of *Cimex lectularius*; *Pediculus*
196 *humanus*; and *D. melanogaster* nuclear receptor sequences (Supplementary Fig. S2). The orthologues of
197 *D. melanogaster eagle* and hormone receptor like-83 genes were not identified either in the *R. prolixus*,
198 *C. lectularius* or *P. humanus* genomes (Supplementary Fig. S2).

199 3.1.6 takeout genes

200 Three *takeout* (*to*) genes had been previously identified in the *R. prolixus* genome: *to1* (RPRC010098); *to2*
201 (RPRC002313); and *to3* (RPRC01009) (Mesquita et al., 2015). A total of 12 new *to* gene sequences were
202 identified in our assemblies (Supplementary Table S6) and annotated based on their phylogenetic relations
203 (Figure 4). Considering this analysis, RPRC002313 and RPRC010096 were annotated as *to6* and *to2*,
204 respectively. *R. prolixus to* genes were separated into two different clades: *to1-to9* and *to10-to15*. All the
205 structural characteristics of *to* genes were identified in *R. prolixus to* sequences: presence of signal peptide;
206 two conserved cysteine residues in the N-terminal region and two conserved motifs (So et al., 2000). As
207 expected, the length of all *to* sequences was close to 250 amino acids (Supplementary Fig. S3). Finally, it
208 was observed that 11 out of 15 *to* genes clustered in KQ034137 and KQ034102 supercontigs, with 8 and 3
209 genes each (Supplementary Fig. S4).

210 3.2 Antennal expression profiles

211 3.2.1 Neuropeptide and neurohormone precursor genes

212 A total of 31 neuropeptide precursor genes were found to be expressed in *R. prolixus* antennae,
213 considering a value of >1 Fragments Per Kilobase Million (FPKM) in at least one library as an exclusion
214 threshold (see Supplementary Database 3). Fifteen out of 44 *R. prolixus* neuropeptide genes showed FPKM
215 values higher than 10 in at least one library. Allatostatin-CC (AstCC), allatostatin-CCC (AstCCC), ITG-like,
216 IDLSRF-like peptide and OK were the most highly expressed neuropeptide genes in the antennae of *R.*
217 *prolixus* (Fig. 1a and Supplementary Database 3). The gene encoding for AstCC was the one showing highest
218 expression in our database, especially in larval antennae (larvae FPKM value = 888; female FPKM value =
219 98.5 and male FPKM value = 55). Indeed, the lower expression of this gene in male antennae was
220 statistically significant (FDR<0.05) when compared to that observed in larval antennae (Table S7). For AstA
221 and myoinhibitory peptide (MIP), a significant lower expression (FDR<0.05) was also observed in the
222 antennae of both adult stages when compared to larvae (Table S7). The antennal expression of allatotropin
223 (AT); OK and IDLSRF-like peptide seems to increase after imaginal moult (Fig. 1a). The expression reported
224 for OK; Dh31; CAPA; AKH and ITP is the sum of their different isoforms or splicing variants.

225 3.2.2 GPCRs

226 Data suggest that more than half of Family A neuropeptide receptor genes (25 out of 38 genes) were
227 expressed in the antennae (FPKM values >1 in at least one library; Supplementary Database 3). Crustacean
228 cardioactive peptide (CCAP) receptor 1; NPF receptor 1; ITP; GPA2/GPB5 receptor and RFamide peptide
229 receptor were the most highly expressed Family A receptor-coding genes (Fig. 1b and Supplementary
230 Database 3). The expression of the AKH receptor was significantly lower (FDR=0.06) in females, as
231 compared to larval, antennae (Table S7). Interestingly, the expression of kinin receptor 2 increased
232 significantly in the antennae of adults (FDR=0.058 and FDR=0.014 for female and male, respectively; Fig.1b
233 and Table S7). The antennal expression reported for ACP/CZ related peptide, Capability (CAPA) and CZ
234 receptors, as well as for Pyrokinin receptor 2 was the sum of their different isoforms.

235 In the case of Family B neuropeptide receptor genes, only calcitonin-like diuretic hormone (CT-DH) receptor
236 2 showed FPKM values lower than 1 (Supplementary Database 3). Five out of seven receptor genes

237 belonging to this family presented FPKM values higher than 10 in at least one library (Supplementary
238 Database 3). CT/DH receptor 3, which according to our phylogenetic analysis seems to be exclusive of
239 heteropterans, showed the highest expression for this family. In fact, its expression showed a significant
240 increase in the antennae of adults (FDR=0.0978 and FDR=0.041 for female and male, respectively) when
241 compared to those from larvae (Fig. 1b and Table S7). A similar expression pattern was observed for CT/DH
242 receptor 1 gene (isoforms B and C included) and for the corticotropin releasing factor like diuretic hormone
243 (CRF/DH) receptor 2 (isoforms A and B included) (Fig. 1b). Regarding opsin expression, transcripts of UV
244 opsin and long wave sensitive opsin 1 (LWS1) were detected in all three libraries (Fig. 1b).

245 3.2.3 Tyrosine kinase and guanylyl cyclase type receptors

246 The neuropeptide-like precursor 1 (NPLP1) putative receptor (tyrosine kinase-type) and the potential
247 neuroparsin (guanylyl cyclase receptor) seem to be expressed in the antennae of *R. prolixus* (Fig. 1b).

248 3.2.4 Neuropeptide processing enzymes

249 All enzymes involved in neuropeptide processing, except prohormone convertase 1, seem to be expressed
250 in the antennae of *R. prolixus*, presenting values higher than 10 FPKM in at least one library (Supplementary
251 Table S7). The peptidyl-amidating monooxygenase, signal peptidase and furin-like protease 1 genes showed
252 the highest expression (Fig. 1c).

253 3.2.5 Biogenic amine related genes

254 Expression of at least 16 out of 20 biogenic amine receptor genes was detected in the antennae of
255 *R. prolixus* (FPKM value >1 in at least one library). Dopamine ecdysone receptor, muscarinic acetylcholine
256 receptor type C; orphan receptor 1; serotonin receptors 1b and 2b presented the highest antennal
257 transcription within this group (Fig. 2a and Supplementary Database 3). The expression of the octopamine
258 (Oct) beta receptor 3 showed a significant increase (FDR=0.071) in male antennae compared to larvae (Fig.
259 2a), while octopamine beta receptors 1 and 2 showed a similar trend.

260 All genes encoding for enzymes involved in the biosynthetic pathway of biogenic amines were detected in
261 the antennae of *R. prolixus* (Fig. 2b). The gene that encodes for Tyrosine 3-monooxygenase, which
262 synthesizes DOPA from L-tyrosine, was the most highly expressed of this enzyme group (Fig. 2b).

263 3.2.6 Nuclear receptor genes

264 Ecdysone-induced protein 75, hepatocyte nuclear factor 4, hormone receptor-like in 96 and *ultraspiracle*
265 were the genes with the highest expression, with FPKM values >10 in the three libraries (Fig. 3;
266 Supplementary Database 3). The expression of hormone receptor-like in 3 increased significantly after
267 imaginal moult in male antennae (FDR= 0.017; Table S7). Six nuclear receptor genes had no expression
268 (FPKM value < 1 in the three libraries) in the *R. prolixus* antennal transcriptomes, these were:
269 *Dissatisfaction*; Ecdysone-induced protein (EIP) 78C; Hormone receptor (HR) like in 51; *Knirps-like2*; *Tailless*
270 and *Seven up* (Fig. 3; Supplementary Database 3).

271 3.2.7 takeout genes

272 These genes were highly expressed in *R. prolixus* antennae (Fig. 4), 6 out of 15 presenting FPKM values higher
273 than 1000 in at least one library (Supplementary Database 3). While most *to* genes tended to present an
274 increased expression in adult antennae, a few seemed to follow the opposite pattern. For example, *to11*
275 gen showed a significant decrease after imaginal molt (FDR <0.05 in both sexes; Table S7), while *to2*,
276 decreased its expression significantly only for male adults (FDR=0.012; Table S7). Nevertheless, the
277 expression of *to3* showed a significant increase in both adult stages after molting (FDR<0.05; Table S7), and
278 those of *to4*, *to7*, *to8*, *to10*, *to12*, *to14* and *to15* followed a similar profile. The genes included in the clade
279 of *to1-to9* tended to present higher expression level in antennae.

280 4. DISCUSSION

281 The molecular bases of sensory plasticity at the local antennal level have been sparsely analysed (revised by
282 Gadenne et al. 2016). Our study has characterized the expression profile of a diverse set of genes encoding
283 different modulatory elements (neuropeptides, GPCRs, nuclear receptors and *takeout* genes) in the
284 antenna of *R. prolixus*. The antennal transcription of a broad repertoire of these genes suggests that diverse
285 local systems may be dedicated to the modulation of antennal functions, such as the detection of host cues
286 and communication signals (Barrozo et al., 2016).

287 Our results have proven that neuropeptide gene transcripts are produced in the antennae of kissing-bugs (a
288 total of 31 neuropeptide genes seem to be expressed). The production of neuropeptide gene transcripts
289 has already been reported in the antennae of a few insect species (Jung et al., 2013; Matthews et al., 2016;

290 Rinker et al., 2013). The expression of neuropeptide processing enzyme genes was also detected in bug
291 antennae, and as far as we know, this is the first report on the expression of this type of enzyme-coding
292 genes in insect antennae (Figure 1c). The results presented herein add evidence supporting the antennal
293 production of neuropeptides. However, immunohistochemistry and microscopy experiments would be
294 necessary to identify the types of cells producing neuropeptide transcripts in insect antennae. The
295 presence of neurosecretory cells in insect antennae has only been described for mosquitoes (Meola et al.,
296 2000). The authors showed that these cells form synaptoid sites on the dendrites of sensory neurons
297 (Meola and Sittertz-Bhatkar, 2002; Meola et al., 2000).

298 In recent years, modulatory action by different neuropeptides have been shown for both antennal and
299 labellar chemosensory neurons (Farhan et al., 2013; Jung et al., 2013; Kwon et al., 2016; Lee et al., 2017).
300 Nevertheless, the source of these neuropeptides, whether local or central, was not reported. The current
301 study shows that *R. prolixus* antennae produce a diversity of neuropeptide-coding transcripts, among them
302 high levels of AstCC and ITG-like peptide transcripts in all three libraries (Fig. 1a). Functional RNAi or
303 CRISPR/CAS9 studies should be performed in order to elucidate their role. Orcokinin and IDLSRF-like
304 peptide presented increased antennal expression after the imaginal moult, suggesting that these peptides
305 may modulate adult-specific sensory processes underlying dispersion by flight and mating in kissing-bugs.
306 On the other hand, the decreased antennal expression of AstA and MIP in adults, when compared to 5th
307 instar larvae, suggests an augmented role in immature instars. Instar-specific functional studies with both
308 allatostatins and orcokinin will be necessary in order to understand their antennal function. The
309 significantly lower expression of AstCC in male antennae may suggest a sex-specific antennal role.

310 The expression of 33 out of 49 neuropeptide and neurohormone receptor genes (FPKM value >1,
311 Supplementary Database 3), the other fundamental component of the neuropeptidergic system, suggests
312 that diverse local regulatory processes can react to a similarly complex set of modulatory signals. Indeed,
313 14 neuropeptides/neurohormones and their corresponding receptors presented expression higher than 1
314 FPKM value in at least two conditions (Table 1), reinforcing that parallel local regulatory systems may
315 modulate diverse components of antennal sensory function. The expression of neuropeptide receptor

316 genes in antennae has been already described in other insects (Matthews et al., 2016; Rinker et al., 2013).
317 The high expression shown in all conditions by LNPF receptor 1, GPA2/GPB5 receptor (also known as
318 leucine-rich repeat-containing G protein-coupled receptor 1 - LGR1) and CT/DH receptor 1 (Fig. 1b),
319 suggests important regulatory roles on antennal function. Interestingly, a LNPF-based system modulates
320 responsiveness to food odours of a specific class of OSN in *D. melanogaster* (Lee et al., 2017). Whether this
321 could also be the case for OSNs in *R. prolixus* antennae deserves consideration. The significantly augmented
322 expression of CT/DH receptor 3 and Kinin receptor 2 observed in the antennae of adults (Fig. 1b and
323 Supplementary Table S7) suggests a regulatory function of adult-specific sensory processes. A similar
324 increased adult expression profile was previously observed in the antennae of *R. prolixus* for several
325 chemoreceptors (Latorre-Estivalis et al., 2017). Therefore, it would be interesting to study whether these
326 are functionally connected in the adult phase. The significant decrease observed on the expression of the
327 AKH receptor gene in female antennae may suggest a relation to the modulation of pheromone perception
328 and production as observed for *D. melanogaster* in a sex-specific and starvation dependent manner
329 (Lebreton et al., 2016). Again, it would be interesting to analyse its functional role in kissing-bugs.

330 Peripheral effects of biogenic amines and their antennal production in insects have been reviewed by
331 Zhukovskaya and Polyakovskiy (2017). As observed for neuropeptides (Jung et al., 2013; Kwon et al., 2016;
332 Lee et al., 2017), the modulation of chemosensation and other sensory modalities by biogenic amines
333 (Andres et al., 2016; Inagaki et al., 2012) depends on their levels (Zhukovskaya and Polyakovskiy, 2017), as
334 well as the abundance of their receptors (McQuillan et al., 2012). Actually, *in situ* hybridization allowed
335 detecting octopamine and tyramine receptor gene transcripts in the vicinity of sensory receptor neurons of
336 different insects (Jung et al., 2013; Kutsukake et al., 2000). Furthermore, the presence of dopamine
337 ecdysone receptor has been shown for the labellar cells expressing Gr5 in *D. melanogaster* (Inagaki et al.,
338 2012). This supports the existence of direct modulatory effects of biogenic amines on peripheral sensory
339 processes. Biogenic amines such as octopamine have been proposed to directly affect signal transduction
340 and spike generation on OSNs (Grosmaître et al., 2001). Consistent with these findings, a diverse set of
341 transcripts of biogenic amine receptors was identified in the antennal transcriptome of *R. prolixus* (a total
342 of 16 biogenic amine receptor genes seem to be expressed in them) and in those from other insects

343 (Farhan et al., 2013; Matthews et al., 2016; Rinker et al., 2013). As observed for neuropeptides, most of the
344 genes coding for enzymes involved in the biosynthesis of biogenic amines seem to be expressed in *R.*
345 *prolixus* antennae (Fig. 2b). Serotonergic nerve fibres innervate the antennae of mosquitoes (Siju et al.,
346 2008) which could relate to the high antennal expression observed for 5-HT receptors in *R. prolixus*, (Fig.
347 2a). The dopamine ecdysone receptor, which binds dopamine and ecdysone, showed a high expression on
348 adult antennae, especially in those from males (Fig. 2a). Interestingly, this receptor modulates sex
349 pheromone sensitivity in the antennal lobe of male moths (Abrieux et al., 2014). Our results suggest a
350 similar modulation could also occur at peripheral level in *R. prolixus* male antennae. Octopamine receptors
351 may also have a modulatory role on male sensory processes, as they showed increased expression, this
352 being significant in the case of beta receptor 3, in the antennae of male adults (Fig. 2a; Supplementary
353 Table S7). A role of octopamine receptors in the modulation of male sensory physiology was observed in
354 male moths in which this molecule enhances OSN sensitivity to specific sexual pheromone components
355 (Grosmaître et al., 2001).

356 Hormonal regulation on insect sensory systems has been poorly studied at the peripheral organs (Bigot et
357 al., 2012). Here we show that most described nuclear receptors are expressed in the antennae of an insect
358 (Fig. 3 and Supplementary Database S3), suggesting that these organs have broad capacity to respond to
359 endocrine signals. It is worth mentioning that *Eip75B* and hepatocyte nuclear factor 4 (*Hnf4*) genes are the
360 most expressed nuclear receptor in *R. prolixus* antennae (Fig. 3). Considering ecdysteroid signalling, the
361 detection of *Eip75B* transcripts indicates a potential capacity of kissing-bug antennae to respond to the EcR-
362 *USP* complex (Ecdysone receptor + *Ultraspiracle*), as observed for *Spodoptera littoralis* (Bigot et al., 2012).
363 Besides, *Eip75B* and hormone receptor-like in 51 transcripts (also known as *unfulfilled*) have been identified
364 in central clock cells of *D. melanogaster* and control the expression of clock genes, playing an important
365 role in the maintenance of locomotor rhythms (Jaumouillé et al., 2015; Kumar et al., 2014). Therefore, we
366 suggest that these nuclear receptors may have a similar regulatory role at the periphery, considering that
367 the presence of a peripheral circadian clock has been reported for insect antennae (Tanoue et al., 2004).
368 The *Hnf4* gene, which induces the expression of enzymes that drive lipid mobilization and β -oxidation as a
369 response to starvation in *D. melanogaster* (Palanker et al., 2009), also showed high expression in antennae.

370 The relatively low nutritional status of the insects used in our studies could relate to its high expression in
371 *R. prolixus* antennae. Functional studies would need to be performed in order to evaluate the potential role
372 of this gene as a nutritional sensor in insect antennae. An increased expression of the hormone receptor-
373 like in 3, which is the heterodimer partner of Eip75B, in male specimens suggest a sex-specific role in
374 antennae.

375 Fifteen *takeout* genes were identified in the *R. prolixus* genome, while Ribeiro et al. (2014) identified 18
376 potential takeout transcripts in a midgut transcriptome of this species and Marchant et al. (2016) identified
377 25 takeout transcripts in the transcriptome of the kissing-bug *Triatoma brasiliensis*. Consistently, these
378 numbers match the scale of those found in *Anopheles gambiae* (10); *Acyrtosiphon pisum* (17); and *Bombyx*
379 *mori* (14) genomes (Vanaphan et al., 2012). *R. prolixus* *to* genes present a cluster organization
380 (Supplementary Fig.4S), probably due to gene duplication events, as it was previously observed in other
381 insects (Vanaphan et al., 2012). The antennal expression of *takeout* genes has already been reported in
382 Dipterans (Bohbot and Vogt, 2005; Sarov-Blat et al., 2000). Furthermore, it has been shown that starvation
383 induces the expression of these genes (Sarov-Blat et al., 2000) that have also been related to foraging
384 activity (Meunier et al., 2007). This putative function could explain the high expression observed in the
385 three antennal libraries (Fig. 4), however, functional studies need to be performed to be able to confirm
386 these roles in the antennae of kissing-bugs. Two *to* genes presented significant differences between larval
387 and adult antennal transcriptomes (*to11* and *to3*, with an up and downregulation, respectively) and *to2* is
388 significantly down-regulated when male antennae are compared to those of larvae (Supplementary Table
389 S7). Results suggest that these *to* genes may be related to sex, as observed in *D. melanogaster* (Dauwalder
390 et al., 2002) but experiments are necessary to test this hypothesis.

391 Antennal cells are bathed by haemolymph but not so the dendrites of sensory neurons (bathed by sensillar
392 lymph).Therefore, it is certain that central signals, i.e., circulating hormones, biogenic amines and
393 neuropeptides can modulate the function of most cells in insect antennae (Gadenne et al., 2016). However,
394 the antennal detection of neuropeptide transcripts (and those of enzymes involved in their biosynthesis
395 and that of biogenic amines) suggests the existence of local regulatory systems that could represent
396 additional sources of modulation of the sensitivity of peripheral neurons. Future RNA-seq, peptidomics, in

397 *situ* hybridisation and other functional genetic experiments should test whether these regulatory
398 components are also present in the antennae of other insects and unveil the interaction between central
399 and peripheral regulatory systems to understand their relative contribution to the control of antennal
400 sensory physiology.

401 **ACKNOWLEDGEMENTS**

402 The authors wish to thank the Program for Technological Development in Tools for Health-PDTIS-FIOCRUZ
403 for having facilitated the use of its facilities. We wish to thank Ivana Helena Rocha Oliveira for her help in
404 processing samples used in our experiments, Prof. Claudio Lazzari for kindly providing comments on an
405 earlier version of the manuscript, and Dr. Gabriel da Rocha Fernandes and Fausto Gonçalves dos Santos for
406 their help and support in the bioinformatic analysis.

407 **SPONSORSHIPS**

408 Authors are indebted to INCTEM (Project number: 573959/2008-0), FAPEMIG (Project number: APQ-01359-
409 11), PROEP-FIOCRUZ (Project number: 401973/2012-3), CNPq (Project number: 483805/2013-0), Le
410 Studium for a granting research fellowship to M.G.L (Short Term Contract of Employment N° 2017-2001-
411 179 - Y17F16), FIOCRUZ Visiting researcher fellowship program (fellowship to J.M.L.E 550017/2015-17),
412 Consejo Nacional de Investigaciones Científicas y Técnicas (CONICET) postdoctoral fellowship (fellowship to
413 J.M.L.E 2015-2017) and Agencia Nacional de Promoción Científica y Tecnológica (Project number: PICT
414 2016-3103). J.M.L.E., M.S and S.O are researchers from CONICET.

415 **REFERENCES**

- 416 Abrieux, A., Duportets, L., Debernard, S., Gadenne, C., Anton, S., 2014. The GPCR membrane receptor,
417 DopEcR, mediates the actions of both dopamine and ecdysone to control sex pheromone perception in
418 an insect. *Front Behav Neurosci* 8, 312.
- 419 Andres, M., Seifert, M., Spalhoff, C., Warren, B., Weiss, L., Giraldo, D., Winkler, M., Pauls, S., Goepfert,
420 M.C., 2016. Auditory efferent system modulates mosquito hearing. *Curr Biol* 26, 2028-2036.
- 421 Barrozo, R.B., Reisenman, C.E., Guerenstein, P., Lazzari, C.R., Lorenzo, M.G., 2016. An inside look at the
422 sensory biology of triatomines. *J Insect Physiol*, 97, 3-19.
- 423 Bigot, L., Shaik, H.A., Bozzolan, F., Party, V., Lucas, P., Debernard, S., Siaussat, D., 2012. Peripheral
424 regulation by ecdysteroids of olfactory responsiveness in male Egyptian cotton leaf worms, *Spodoptera*
425 *littoralis*. *Insect Biochem Mol Biol* 42, 22-31.
- 426 Bodin, A., Vinauger, C., Lazzari, C.R., 2009a. Behavioural and physiological state dependency of host seeking
427 in the blood-sucking insect *Rhodnius prolixus*. *J Exp Biol* 212, 2386-2393.
- 428 Bodin, A., Vinauger, C., Lazzari, C.R., 2009b. State-dependency of host-seeking in *Rhodnius prolixus*: the
429 post-ecdysis time. *J Insect Physiol* 55, 574-579.

- 430 Bohbot, J., Vogt, R.G., 2005. Antennal expressed genes of the yellow fever mosquito (*Aedes aegypti* L.);
431 characterization of odorant-binding protein 10 and takeout. *Insect Biochem Mol Biol* 35, 961-979.
- 432 Bohbot, J.D., Durand, N.F., Vinyard, B.T., Dickens, J.C., 2013. Functional development of the octenol
433 response in *Aedes aegypti*. *Front Physiol* 4, 39.
- 434 Bonizzoni, M., Dunn, W., Campbell, C., Olson, K., Dimon, M., Marinotti, O., James, A., 2011. RNA-seq
435 analyses of blood-induced changes in gene expression in the mosquito vector species, *Aedes aegypti*.
436 *BMC Genomics* 12, 82.
- 437 Carey, A.F., Carlson, J.R., 2011. Insect olfaction from model systems to disease control. *Proc Natl Acad Sci U*
438 *S A* 108, 12987-12995.
- 439 Dauwalder, B., Tsujimoto, S., Moss, J., Mattox, W., 2002. The *Drosophila* takeout gene is regulated by the
440 somatic sex-determination pathway and affects male courtship behavior. *Genes Dev* 16, 2879-2892.
- 441 Dobin, A., Davis, C.A., Schlesinger, F., Drenkow, J., Zaleski, C., Jha, S., Batut, P., Chaisson, M., Gingeras, T.R.,
442 2013. STAR: ultrafast universal RNA-seq aligner. *Bioinformatics* 29, 15-21.
- 443 Farhan, A., Gulati, J., Grosse-Wilde, E., Vogel, H., Hansson, B.S., Knaden, M., 2013. The CCHamide 1 receptor
444 modulates sensory perception and olfactory behavior in starved *Drosophila*. *Sci Rep*, 3, 2765.
- 445 Gadenne, C., Barrozo, R.B., Anton, S., 2016. Plasticity in insect olfaction: To smell or not to smell? *Annual*
446 *Review of Entomology* 61, 317-333.
- 447 Grosmaître, X., Marion-Poll, F., Renou, M., 2001. Biogenic amines modulate olfactory receptor neurons
448 firing activity in *Mamestra brassicae*. *Chem Senses* 26, 653-661.
- 449 Guerenstein, P.G., Lazzari, C.R., 2009. Host-seeking: How triatomines acquire and make use of information
450 to find blood. *Acta Trop* 110, 148-158.
- 451 Hamoudi, Z., Lange, A.B., Orchard, I., 2016. Identification and characterization of the corazonin receptor
452 and possible physiological roles of the corazonin-signaling pathway in *Rhodnius prolixus*. *Front Neurosci*
453 10, 357.
- 454 Inagaki, H.K., de-Leon, S.B.-T., Wong, A.M., Jagadish, S., Ishimoto, H., Barnea, G., Kitamoto, T., Axel, R.,
455 Anderson, D.J., 2012. Visualizing neuromodulation in vivo: TANGO-mapping of dopamine signaling
456 reveals appetite control of sugar sensing. *Cell* 148, 583-595.
- 457 Jaumouillé, E., Almeida, P.M., Stähli, P., Koch, R., Nagoshi, E., 2015. Transcriptional regulation via nuclear
458 receptor crosstalk required for the *Drosophila* circadian clock. *Curr Biol* 25, 1502-1508.
- 459 Jung, J., Kim, J.-H., Pfeiffer, R., Ahn, Y.-J., Page, T.L., Kwon, H., 2013. Neuromodulation of Olfactory
460 Sensitivity in the Peripheral Olfactory Organs of the American Cockroach, *Periplaneta americana*. *PLoS*
461 *One* 8, e81361.
- 462 Kromann, S.H., Saveer, A.M., Binyameen, M., Bengtsson, M., Birgersson, G., Hansson, B.S., Schlyter, F.,
463 Witzgall, P., Ignell, R., Becher, P.G., 2015. Concurrent modulation of neuronal and behavioural olfactory
464 responses to sex and host plant cues in a male moth. *Proc Biol Sci* 282, 20141884.
- 465 Kumar, S., Chen, D., Jang, C., Nall, A., Zheng, X., Sehgal, A., 2014. An ecdysone-responsive nuclear receptor
466 regulates circadian rhythms in *Drosophila*. *Nat Commun* 5, 5697.
- 467 Kutsukake, M., Komatsu, A., Yamamoto, D., Ishiwa-Chigusa, S., 2000. A tyramine receptor gene mutation
468 causes a defective olfactory behavior in *Drosophila melanogaster*. *Gene* 245, 31-42.
- 469 Kwon, H., Agha, M.A., Smith, R.C., Nachman, R.J., Marion-Poll, F., Pietrantonio, P.V., 2016. Leucokinin
470 mimetic elicits aversive behavior in mosquito *Aedes aegypti* (L.) and inhibits the sugar taste neuron. *Proc*
471 *Natl Acad Sci U S A*, 201520404.
- 472 Latorre-Estivalis, J.M., de Oliveira, E.S., Esteves, B.B., Guimarães, L.S., Ramos, M.N., Lorenzo, M.G., 2015a.
473 Patterns of expression of odorant receptor genes in a Chagas disease vector. *Insect Biochem Mol Biol*,
474 69, 71-81.
- 475 Latorre-Estivalis, J.M., Omondi, B.A., DeSouza, O., Oliveira, I.H.R., Ignell, R., Lorenzo, M.G., 2015b.
476 Molecular basis of peripheral olfactory plasticity in *Rhodnius prolixus*, a Chagas disease vector. *Front*
477 *Ecol Evol* 3, 74.
- 478 Latorre-Estivalis, J.M., Robertson, H.M., Walden, K.K., Ruiz, J., Gonçalves, L.O., Guarneri, A., Lorenzo, M.G.,
479 2017. The molecular sensory machinery of a Chagas disease vector: expression changes through
480 imaginal moult and sexually dimorphic features. *Scientific reports* 7, 40049
- 481 Lazzari, C.R., 1992. Circadian organization of locomotion activity in the haematophagous bug *Triatoma*
482 *infestans*. *Journal of insect physiology* 38, 895-903.

- 483 Lebreton, S., Mansourian, S., Bigarreau, J., Dekker, T., 2016. The Adipokinetic hormone receptor modulates
484 sexual behavior, pheromone perception and pheromone production in a sex-specific and starvation-
485 dependent manner in *Drosophila melanogaster*. *Front Ecol Evol* 3, 151.
- 486 Lee, S., Kim, Y.-J., Jones, W.D., 2017. Central peptidergic modulation of peripheral olfactory responses. *BMC*
487 *Biology* 15, 35.
- 488 Manrique, G., Lorenzo, M.G., 2012. The sexual behaviour of Chagas' Disease vectors: Chemical signals
489 mediating communication between male and female triatomine bugs. *Psyche (Camb Mass)* 2012.
- 490 Marchant, A., Mougél, F., Jacquín-Joly, E., Costa, J., Almeida, C.E., Harry, M., 2016. Under-expression of
491 chemosensory genes in domiciliary bugs of the Chagas disease vector *Triatoma brasiliensis*. *PLoS Negl*
492 *Trop Dis* 10, e0005067.
- 493 Matthews, B.J., McBride, C.S., DeGennaro, M., Despo, O., Vosshall, L.B., 2016. The neurotranscriptome of
494 the *Aedes aegypti* mosquito. *BMC Genomics* 17, 32.
- 495 McQuillan, H.J., Barron, A.B., Mercer, A.R., 2012. Age-and behaviour-related changes in the expression of
496 biogenic amine receptor genes in the antennae of honey bees (*Apis mellifera*). *J Comp Physiol [A]* 198,
497 753-761.
- 498 Meola, S.M., Sittertz-Bhatkar, H., 2002. Neuroendocrine modulation of olfactory sensory neuron signal
499 reception via axo-dendritic synapses in the antennae of the mosquito, *Aedes aegypti*. *J Mol Neurosci* 18,
500 239-245.
- 501 Meola, S.M., Sittertz-Bhatkar, H., Pendleton, M.W., Meola, R.W., Knight, W.P., Olson, J., 2000.
502 Ultrastructural analysis of neurosecretory cells in the antennae of the mosquito, *Culex salinarius*
503 (Diptera: Culicidae). *J Mol Neurosci* 14, 17.
- 504 Mesquita, R.D., Vionette-Amaral, R.J., Lowenberger, C., Rivera-Pomar, R., Monteiro, F.A., Minx, P., Spieth,
505 J., Carvalho, A.B., Panzera, F., Lawson, D., Torres, A.Q., Ribeiro, J.M., Sorgine, M.H., Waterhouse, R.M.,
506 Montague, M.J., Abad-Franch, F., Alves-Bezerra, M., Amaral, L.R., Araujo, H.M., Araujo, R.N., Aravind, L.,
507 Atella, G.C., Azambuja, P., Berni, M., Bittencourt-Cunha, P.R., Braz, G.R., Calderon-Fernandez, G.,
508 Carareto, C.M., Christensen, M.B., Costa, I.R., Costa, S.G., Dansa, M., Dumas-Filho, C.R., De-Paula, I.F.,
509 Dias, F.A., Dimopoulos, G., Emrich, S.J., Esponda-Behrens, N., Fampa, P., Fernandez-Medina, R.D., da
510 Fonseca, R.N., Fontenele, M., Fronick, C., Fulton, L.A., Gandara, A.C., Garcia, E.S., Genta, F.A., Giraldo-
511 Calderon, G.I., Gomes, B., Gondim, K.C., Granzotto, A., Guarneri, A.A., Guigo, R., Harry, M., Hughes, D.S.,
512 Jablonka, W., Jacquín-Joly, E., Juarez, M.P., Koerich, L.B., Latorre-Estivalis, J.M., Lavore, A., Lawrence,
513 G.G., Lazoski, C., Lazzari, C.R., Lopes, R.R., Lorenzo, M.G., Lugon, M.D., Majerowicz, D., Marcet, P.L.,
514 Mariotti, M., Masuda, H., Megy, K., Melo, A.C., Missirlis, F., Mota, T., Noriega, F.G., Nouzova, M., Nunes,
515 R.D., Oliveira, R.L., Oliveira-Silveira, G., Ons, S., Pagola, L., Paiva-Silva, G.O., Pascual, A., Pavan, M.G.,
516 Pedrini, N., Peixoto, A.A., Pereira, M.H., Pike, A., Polycarpo, C., Prosdociami, F., Ribeiro-Rodrigues, R.,
517 Robertson, H.M., Salerno, A.P., Salmon, D., Santesmasses, D., Schama, R., Seabra-Junior, E.S., Silva-
518 Cardoso, L., Silva-Neto, M.A., Souza-Gomes, M., Sterkel, M., Taracena, M.L., Tojo, M., Tu, Z.J., Tubio,
519 J.M., Ursic-Bedoya, R., Venancio, T.M., Walter-Nuno, A.B., Wilson, D., Warren, W.C., Wilson, R.K.,
520 Huebner, E., Dotson, E.M., Oliveira, P.L., 2015. Genome of *Rhodnius prolixus*, an insect vector of Chagas
521 disease, reveals unique adaptations to hematophagy and parasite infection. *Proc Natl Acad Sci U S A*
522 112, 14936-14941.
- 523 Meunier, N., Belgacem, Y.H., Martin, J.-R., 2007. Regulation of feeding behaviour and locomotor activity by
524 *takeout* in *Drosophila*. *J Exp Biol* 210, 1424-1434.
- 525 Ons, S., 2017. Neuropeptides in the regulation of *Rhodnius prolixus* physiology. *J Insect Physiol Paris* 97, 77-
526 92.
- 527 Ons, S., Lavore, A., Sterkel, M., Wulff, J., Sierra, I., Martínez-Barnette, J., Rodriguez, M., Rivera-Pomar, R.,
528 2016. Identification of G protein coupled receptors for opsins and neurohormones in *Rhodnius prolixus*.
529 Genomic and transcriptomic analysis. *Insect Biochem Mol Biol* 69, 34-50.
- 530 Ons, S., Richter, F., Urlaub, H., Pomar, R.R., 2009. The neuropeptidome of *Rhodnius prolixus* brain.
531 *Proteomics* 9, 788-792.
- 532 Ons, S., Sterkel, M., Diambra, L., Urlaub, H., Rivera-Pomar, R., 2011. Neuropeptide precursor gene discovery
533 in the Chagas disease vector *Rhodnius prolixus*. *Insect Mol Biol* 20, 29-44.

- 534 Orchard, I., 2006. Serotonin: a coordinator of feeding-related physiological events in the blood-gorging bug,
535 *Rhodnius prolixus*. Comparative Biochemistry and Physiology Part A: Molecular & Integrative Physiology
536 144, 316-324.
- 537 Palanker, L., Tennessen, J.M., Lam, G., Thummel, C.S., 2009. *Drosophila* HNF4 regulates lipid mobilization
538 and β -oxidation. Cell Metab 9, 228-239.
- 539 Pauls, D., Chen, J., Reiher, W., Vanselow, J.T., Schlosser, A., Kahnt, J., Wegener, C., 2014. Peptidomics and
540 processing of regulatory peptides in the fruit fly *Drosophila*. EuPA Open Proteomics 3, 114-127.
- 541 Petersen, T.N., Brunak, S., von Heijne, G., Nielsen, H., 2011. SignalP 4.0: discriminating signal peptides from
542 transmembrane regions. Nat Methods 8, 785-786.
- 543 Qiu, Y.T., van Loon, J.J., Takken, W., Meijerink, J., Smid, H.M., 2006. Olfactory coding in antennal neurons of
544 the malaria mosquito, *Anopheles gambiae*. Chem Senses 31, 845-863.
- 545 Ribeiro, J.M., Genta, F.A., Sorgine, M.H., Logullo, R., Mesquita, R.D., Paiva-Silva, G.O., Majerowicz, D.,
546 Medeiros, M., Koerich, L., Terra, W.R., 2014. An insight into the transcriptome of the digestive tract of
547 the bloodsucking bug, *Rhodnius prolixus*. PLoS Negl Trop Dis 8, e2594.
- 548 Rinker, D.C., Zhou, X., Pitts, R.J., Rokas, A., Zwiebel, L.J., 2013. Antennal transcriptome profiles of
549 anopheline mosquitoes reveal human host olfactory specialization in *Anopheles gambiae*. BMC
550 Genomics 14, 749.
- 551 Sarov-Blat, L., So, W.V., Liu, L., Rosbash, M., 2000. The *Drosophila takeout* gene is a novel molecular link
552 between circadian rhythms and feeding behavior. Cell 101, 647-656.
- 553 Sedra, L., Lange, A.B., 2016. Cloning and expression of long neuropeptide F and the role of FMRFamide-like
554 peptides in regulating egg production in the Chagas vector, *Rhodnius prolixus*. Peptides 82, 1-11.
- 555 Segraves, W.A., Hogness, D.S., 1990. The E75 ecdysone-inducible gene responsible for the 75B early puff in
556 *Drosophila* encodes two new members of the steroid receptor superfamily. Genes Dev 4, 204-219.
- 557 Siju, K., Hansson, B.S., Ignell, R., 2008. Immunocytochemical localization of serotonin in the central and
558 peripheral chemosensory system of mosquitoes. Arthropod Struct Dev 37, 248-259.
- 559 So, W.V., Sarov-Blat, L., Kotarski, C.K., McDonald, M.J., Allada, R., Rosbash, M., 2000. Takeout, a novel
560 *Drosophila* gene under circadian clock transcriptional regulation. Mol Cell Biol 20, 6935-6944.
- 561 Sterkel, M., Oliveira, P.L., Urlaub, H., Hernandez-Martinez, S., Rivera-Pomar, R., Ons, S., 2012. OKB, a novel
562 family of brain-gut neuropeptides from insects. Insect Biochem Mol Biol 42, 466-473.
- 563 Sterkel, M., Urlaub, H., Rivera-Pomar, R., Ons, S., 2011. Functional proteomics of neuropeptidome dynamics
564 during the feeding process of *Rhodnius prolixus*. Journal of Proteome Research 10, 3363-3371.
- 565 Tanoue, S., Krishnan, P., Krishnan, B., Dryer, S.E., Hardin, P.E., 2004. Circadian clocks in antennal neurons
566 are necessary and sufficient for olfaction rhythms in *Drosophila*. Curr Biol 14, 638-649.
- 567 Touhara, K., Lerro, K.A., Bonning, B.C., Hammock, B.D., Prestwich, G.D., 1993. Ligand binding by a
568 recombinant insect juvenile hormone binding protein. Biochemistry 32, 2068-2075.
- 569 Vanaphan, N., Dauwalder, B., Zufall, R.A., 2012. Diversification of *takeout*, a male-biased gene family in
570 *Drosophila*. Gene 491, 142-148.
- 571 Velarde, R.A., Robinson, G.E., Fahrbach, S.E., 2006. Nuclear receptors of the honey bee: annotation and
572 expression in the adult brain. Insect Mol Biol 15, 583-595.
- 573 Vinauger, C., Lahondère, C., Cohuet, A., Lazzari, C.R., Riffell, J.A., 2016. Learning and memory in disease
574 vector insects. Trends Parasitol, 32, 761-771.
- 575 Wigglesworth, V., Gillett, J., 1934. The function of the antennae in *Rhodnius prolixus* (Hemiptera) and the
576 mechanism of orientation to the host. J Exp Biol 11, 120-139.
- 577 Wulff, J.P., Sierra, I., Sterkel, M., Holtorf, M., Van Wielendaele, P., Francini, F., Broeck, J.V., Ons, S., 2017.
578 Orcokinin neuropeptides regulate ecdysis in the hemimetabolous insect *Rhodnius prolixus*. Insect
579 Biochem Mol Biol. 81, 91-102.
- 580 Yeoh, J.G., Pandit, A.A., Zandawala, M., Nässel, D.R., Davies, S.-A., Dow, J.A., 2017. DINEr: Database for
581 Insect Neuropeptide Research. Insect Biochem Mol Biol 86, 9-19.
- 582 Zandawala, M., Li, S., Hauser, F., Grimmelhuijzen, C.J., Orchard, I., 2013. Isolation and functional
583 characterization of calcitonin-like diuretic hormone receptors in *Rhodnius prolixus*. PLoS One 8, e82466
584 vol. 8, no 11, p. e82466.
- 585 Zhukovskaya, M.I., Polyanovsky, A.D., 2017. Biogenic amines in insect antennae. Front Syst Neurosci 11, 11,
586 p. 45.

587 **LEGENDS**

588 **Figure 1 - Heat map comparing the expression levels of (a) neuropeptide precursor genes, (b) G protein-**
589 **coupled receptor genes, and (c) neuropeptide processing enzymes in the antennae of *R. prolixus* larvae**
590 **(L), female (F) and male (M) adults.**

591 Expression levels (displayed as Log10 FPKM +1) represented by means of a colour scale, in which blue/red
592 represent lowest/highest expression. Abbreviations: R, receptor; H, hormone. The complete names of
593 neuropeptide precursor genes, their receptors and enzymes are detailed in Supplementary Table S1-3.

594 **Figure 2 - Heat map comparing antennal expression levels of *R. prolixus* genes coding for putative (a) BA-**
595 **detecting GPCRs and for (b) enzymes involved in BA synthesis in the antennae of larvae (L), female (F)**
596 **and male (M) adults.**

597 Expression levels (displayed as Log10 FPKM +1) represented by means of a colour scale, in which red/red
598 represent lowest/highest expression. Abbreviations: AC, acetylcholine; R, receptor; Dop, Dopamine, M-Ach,
599 Muscarinic Acetylcholine; Oct, Octopamine; Tyr, Tyramine; Ser, Serotonine; AADC, Amino acid
600 decarboxylase. Complete names of biogenic amine receptors and enzymes are detailed in Supplementary
601 Table S4-5.

602 **Figure 3 - Heat map comparing the expression levels of *R. prolixus* nuclear receptors in the antennae of**
603 **larvae (L), female (F) and male (M) adults.**

604 Expression levels (displayed as Log10 FPKM +1) represented by means of a colour scale, in which blue/red
605 represent lowest/highest expression. Abbreviations: R, receptor; Eip, Ecdysone-induced protein; TF,
606 transcription factor; NF, nuclear factor; HR, hormone receptor; PNR, photoreceptor-specific nuclear
607 receptor. Complete names of these genes are detailed in Supplementary Table S6.

608 **Figure 4 - Heat map comparing the expression levels of *R. prolixus* takeout (to) genes in the antennae of**
609 **larvae (L), female (F) and male (M) adults.**

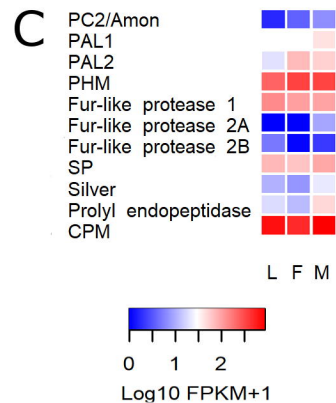
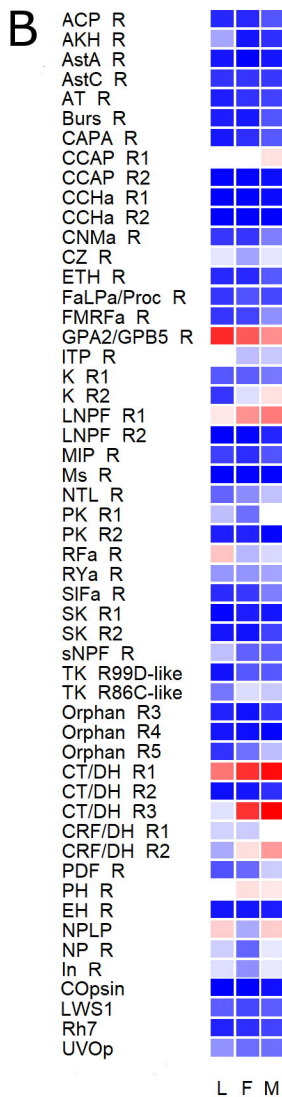
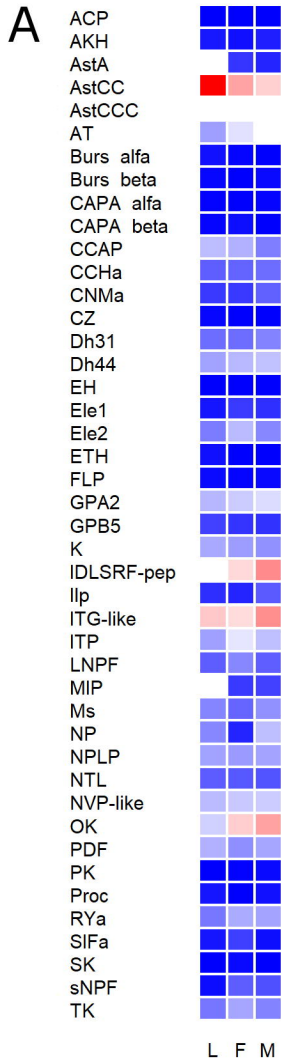
610 Expression levels (displayed as Log10 FPKM +1) represented by means of a colour scale, in which blue/red
611 represent lowest/highest expression. The evolutionary history of *R. prolixus* takeouts was inferred by using
612 the Maximum Likelihood method in PhyML v3.0. The support values on the bipartitions correspond to SH-

613 like P values, which were calculated by means of aLRT SH-like test. The LG substitution amino-acid model
614 was used

615 **Table 1 - Antennal expression (represented as Fragments Per Kilobase Million - FPKM - values) of**
 616 **neuropeptides and their corresponding receptors with FPKM values higher than 1 in at least two of the**
 617 **analysed conditions. Complete names are detailed in Supplementary Table S1 and S2.**

Neuropeptide	Larvae	Female	Male	Receptor	Larvae	Female	Male
CCAP	11.3	9.8	4.5	CCAP r	12.1	9.8	14.1
Dh31	3.4	3.3	4.8	CT/DH r1	41.8	81.1	116.7
				CT/DH r3	7.5	79.3	131.6
Dh44	7.7	10.7	12.4	CRF/DH r1	6.5	6.1	10.9
				CRF/DH r2	4.1	14.8	29.2
GPA2	10.5	14	17.5	GPA2/GPB5 r	87.9	54.1	32.5
GPB5	1.37	1.06	1.02				
LK	8.7	7.2	6	Kinin r 1	1.3	1.5	2.2
				Kinin r 2	0.7	7.4	14.1
ITP	7.5	20.1	12	ITP r	11.3	5.2	5.9
LNPF	2.5	5.1	2.6	LNPF r1	13.5	31.8	39.8
Ntl	2.4	2.3	2.1	Ntl r	1.7	2.9	5.4
NP	5.1	0.7	11.5	NP r	6.2	1.6	8.2
NPLP1	7.7	7.1	7.9	NPLP r	1.3	0.7	1.3
PDF	9.6	5.8	8.1	PDF r	1.2	1.7	6.1
RYa	3.9	8.9	8	RYa r	3.25	3.2	3.87
sNPF	0.2	2.5	1.9	sNPF r	5.3	1.6	1.5
TK	3.8	8.1	4.8	TK 86C-like r	2.1	7.2	5.8
				TK 99D-like r	0.2	1.3	1.4

618

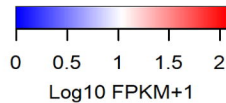
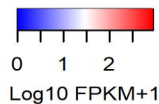


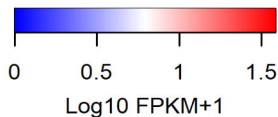
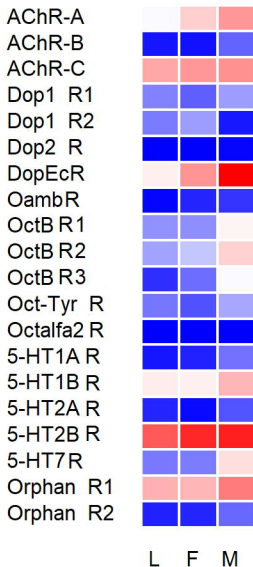
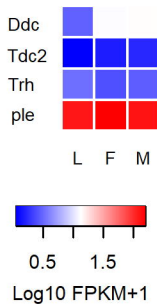
Family A

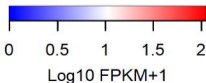
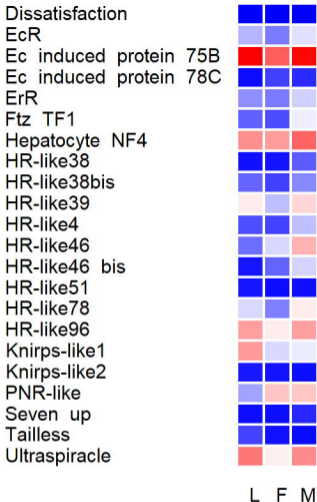
Family B

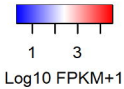
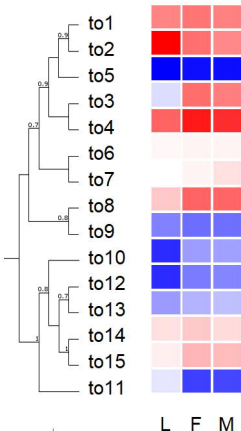
Tyrosin Kinase
Guanylyl Cyclase

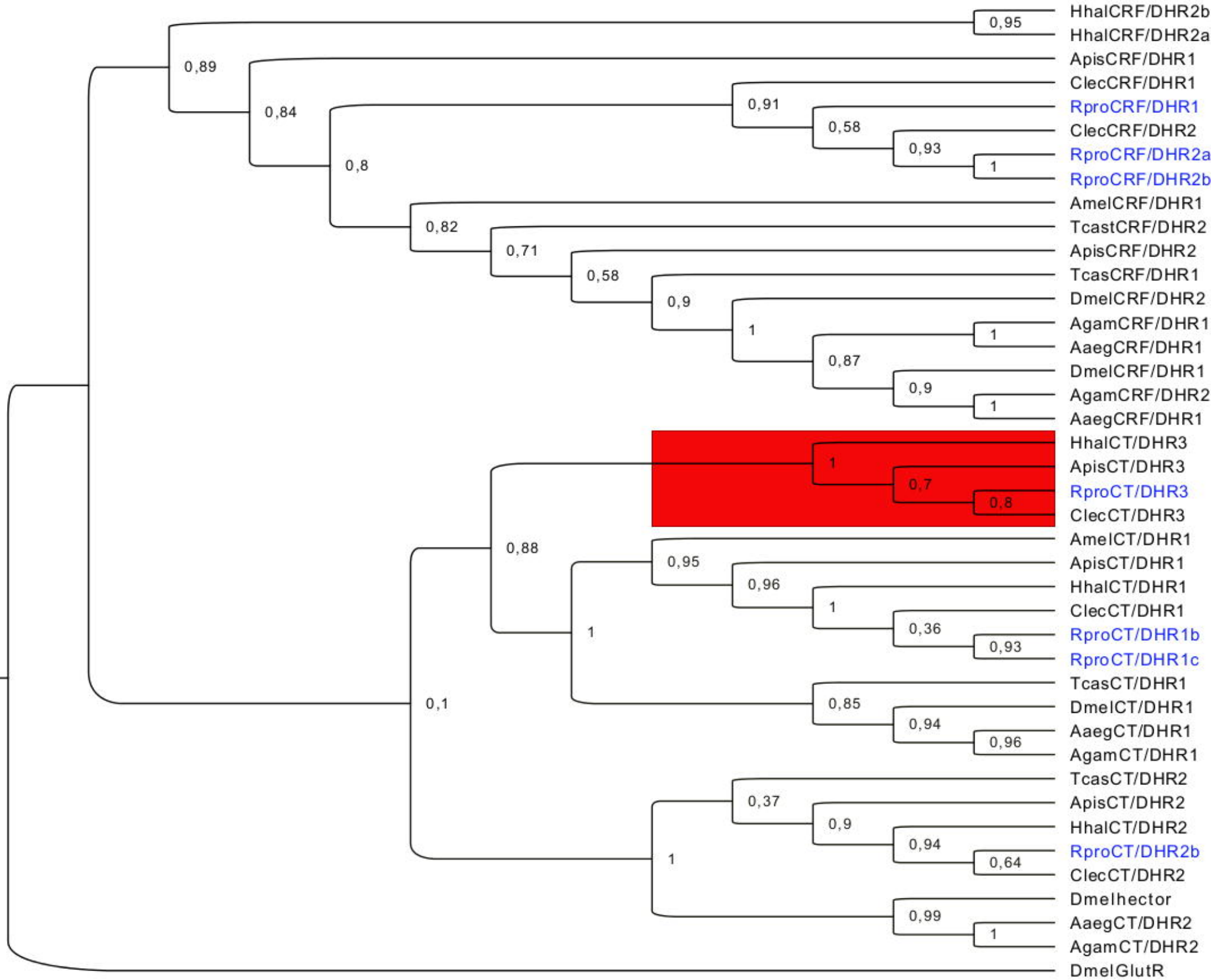
Opsins



A**B**

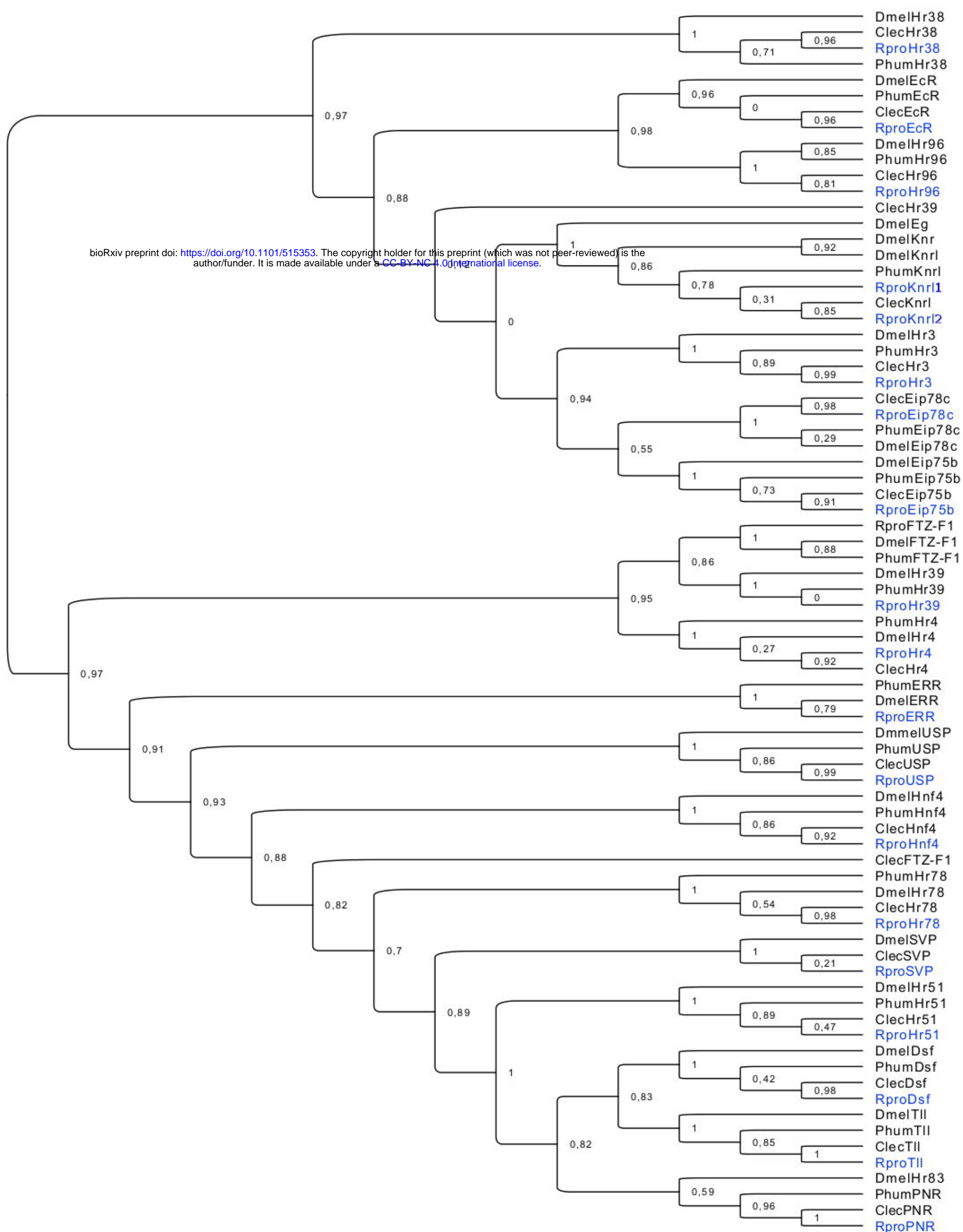






2.0

bioRxiv preprint doi: <https://doi.org/10.1101/515353>; this version posted August 12, 2019. The copyright holder for this preprint (which was not peer-reviewed) is the author/funder. It is made available under aCC-BY-NC 4.0 International license.



DmelTO -----MF----AIAFAVV--LCLLVSDAKFPEDPK--EKKYGD---GECIMKLC 39
 RproTO1 -----ML----KPLVLT--LLIYMAQAQAKLKNWK--KRRNDPKLDDCLRVAV 42
 RproTO2 -----MW----TAALVLL--SASAFQAQAKLKNWIV--KRSKAPADAGDCKWRAM 42
 RproTO3 -----MFKFIV--YLIYLVL--LISDMAQPGKLPKWT--TKGSPENECILKGA1 46
 RproTO4 -----MHVL--CMLLNG--AFIFHVQSAKLPKWT--TKKDDPRNDCILKIAI 44
 RproTO5 -----MMEK----QLFYIC--AIYGVVESAKLPKWT--AKSNDPKKEEILKGA1 43
 RproTO6 -----MTRG--YLLTIF--CLVGLSVAAKMPSKWK--TKRSKDNINECLKKAV 44
 RproTO7 -----MY--ILS--SITFGCV--CLYLVSAATVLPESWK--TKKSDKKLNECLKSSI 45
 RproTO8 -----MF----LMIIFGL--THCVFSGGKVEVPPGV--LRSRHKPINDCVNRN1 43
 RproTO9 -----MAR----QLTLIA--SVVYILSTPVQGGQP--EILSLSAKNLPCLLITAI 43
 RproTO10 -----MEK--VLFLVLFVIGVWC--TAPARSMNKLPEVFL--SK--LDKNFDCNMKNG 48
 RproTO11 -----MYSTLVLFL--SIVGLSLAVKLPAYV--TKSRNDPKLSECLARHGT 42
 RproTO12 -----MKTVSLNCLMRV--SLLL--TALPTSQKLPSYIK--TKSRNDPKLNECVVNG 48
 RproTO13 -----MVQPSRMTAAQIS--MALL--TIVALSAALKLPSYII--PKRNDPKLNECVVNG 49
 RproTO14 -----MLCSPLAFSAVVMFVCSANPAKPKDPPVYQLPSYIKRA--SRNDPNINKCVVEV 54
 RproTO15 -----MFLLAVLCTWMVVAPEILAKDLVPLYPLPVYKRA--SRNDPNINKCVVEV 50

DmelTO KPLVK--NGEYLVDTDLKI--TMKPESSHYP--SNLFLNGDKALGDNMNVFLNENS-EAIYKET 216
 RproTO1 RNNTK--NGKHVFAVEKFDVLKDAEKGHVH--FNLFNGDKALGDNMNRFLNANREILTEI 213
 RproTO2 KKISR--GGKELEVTKFQL--QFTASNAKLQ--FNLFNGGKALGNTMMKFLNENWEIVNEL 212
 RproTO3 KEIEK--GSKHYEITNTEFF--DFDAGVHIQT--FNLFNGDKALGDNMNVFLNENWKEILQEL 217
 RproTO4 KEIQK--NRDKYQIISHDFI--IFDAEKMDILL--FNLFNGDKALGDNMNVFLNENWPEILKEL 214
 RproTO5 KEVKK--GDRKHFEVVFQI--KPTQKEVFIQ--FNLFNGDKALGDNMNRFLNENSQEILQEL 214
 RproTO6 HEITK--GKEKYMEDKTFD--DLETSKLRVFL--GNLFNGDKALGDNMNVFLNENWQEILKEL 217
 RproTO7 NKIKK--GADTYVNVKCDI--MLDTSRHLHD--FKRSSVNEGGQLNLTVLNENWKEILTDL 219
 RproTO8 KEEMR--DGDKYMMVDRlaf--TFDI DMEVHY--YVNLFGDPLVGE SMMNSFLDNWNRDIETAE 219
 RproTO9 HQTTK--NGKVHVMMDSVKF--PKFI DKMELL--FNLFNGRLLSDTLNSVLNENWESVLEDM 217
 RproTO10 KLVRK--NNEIDLQVTKSDL--KHTTTRLRIN--FNLFNGDKALGASTNKLINENWEEFNIQL 221
 RproTO11 KLIKR--KRHEYSQFIRHKV--TPTASGLKIN--FNLFNGDKLLSDNMMMLANANREVLQDL 226
 RproTO12 DLVKKEDGEEYMKVTKTDI--DTDIGNAIFR--FNLFNGDRLLGSEMMRFLNENWKEVVKEL 222
 RproTO13 ELIKK--NGKEYMNFSTSEL--LEFNGRTFFD--FNLFNGDPLVGEFLGNMNRFLNENWYVTKEL 222
 RproTO14 TYQKKNNGYTVLVLGNSSF--PFEVGHMSIK--FNLFNGDPLVGGNMMRFLNENWQIMDKL 227
 RproTO15 AYEKKNGRTYLVKVNVSF--PMDAGNLVIR--FNLFNGDKLLGDNMNRFLNENWKEILKDV 223

DmelTO NTLFSENSAEGDPLGNLMQDLPLKIDRMVVISQGESSSP--VGITLFTDNLLYGKIDQRIV 98
 RproTO1 TFAARDLK--DGNANLILPLDPLRIVQLVIDQ--GGQP--VSKVMVFNFSISGRHNRVEVL 98
 RproTO2 EFSIQDLK--NGSRFTGILPLDPLRISKIKIAP--GDGP--VSVVLSFHDLDIIGISNVKIS 98
 RproTO3 EEAIHELA--DGNPSLGLVPMDFHFDITIDQ--GHGP--VSIKLDFDLDLDTIGLDLIIK 102
 RproTO4 EEAVHDLV--GNNPSLGVFLPDMHFOTYSIDQ--GHGP--VSIKLDFHLEIIGVKDLK100
 RproTO5 QHAI RDLNNGGKASLGLVPMDFHFDITVDQ--GDGP--VAIKLEFNNLDLIGLKITVNN 100
 RproTO6 EEAVKTLK--SGNPSLGVFLPDLPLHFNMLNIQ--GSGP--VSINLNFNMMDIHGISTAKVK 100
 RproTO7 QTVVRELK--TGNKSGFLPTEPELLIEEVVLHG--GNGQVAGLDTLFRKLLKMYGLSRVVD 102
 RproTO8 QETMPKFI--SGIKSLDIPSLDFHVDNLIIDSKRDDGSPVSDLSVHNHNIKGLKSAKIT 102
 RproTO9 QNVIPIVL--KGIPIRYGVPMDFHFDITLDLNS--SPGKTLNWKHKFTNVNLDLQGLSASIV 100
 RproTO10 NLAIPTLA--KGDAAKWKIPVLDPLKPSVSISES--SAKS--TALNITLNDLEIYGLKESKLV 105
 RproTO11 REMI PKII--PGDPSIRLPRLEPDLLEVEREIHPSGNGGS--INMRLVYCKQVAGLSRASLN 100
 RproTO12 RLAI PKFI--NGDTPKYRVPRLDPLDINELKVVQG--SRQ--LGLTMSLRCDKVTGKHAQFI 105
 RproTO13 QLAI PKFI--NGDPKYRAPRLDPLDITELRVNQG--TRQ--IGLRMLIKNWKIYGLKNTVF 106
 RproTO14 GPAIKTVA--KGDPKYRIPQLDPLHikelRVQGG--TKQ--VGLTILCSBCLMMGLQNTVEK 110
 RproTO15 SVALKTVI--KGDPKYRVPVLPNFMVIEELIVKQG--TKQ--VGLTLVCKDCKLWGLENTKIV 106

DmelTO AKAI DR SF GK YLGVVGVGVSFKLPVDAE FFADFS 249
 RproTO1 TPAKSKSFGLAYMRISNRILSKVPEGLFIS 244
 RproTO2 SPALAQAFGVAMKAVSNKILTPVPEEINL** 242
 RproTO3 KPAISGAFGAAFKEVGNRVGKIPQLI SPS 248
 RproTO4 RPAVSKAFSSAFKEVGNRVFSKVPLELISPP* 245
 RproTO5 GPAISRAFGTAFKTSNRNISKVPSNEINL 244
 RproTO6 KPAISKAFGEAFRSIGNSVFSRIPLNQIAPK* 248
 RproTO7 KPAISKAFGAAFKDLANRVSKVPLDKVMPA 250
 RproTO8 TSVSEAFSIFGEQVARKVFDHPIDKIALP 250
 RproTO9 KPSFEAIGSAFKEFANRIFNRIPOQNYKCK 247
 RproTO10 KPSVUQSIGAILTQVLSNIVKTVPYENI FTK* 252
 RproTO11 KPSIDVTQVQIIRITLQIFDIPIYSPFFDS 248
 RproTO12 GAFVDSVISQVFEILSRIFELIPIYSPVHLYVTP* 254
 RproTO13 GPAVGEAFSNVFRLLTTRIAQVVPNDIYLQ* 254
 RproTO14 GPAFSRSLAELTGTILNMRVVPDFIMFFDT 259
 RproTO15 QPALSELSSELSERILNINISALIPMDILFPKK 255

DmelTO KVGKFGDRDLTAKHEVKIVTKTFLSVGPNYIQGKVLILPISGTGQSNMVMVRAIVSFSG 158
 RproTO1 SVFNWDKVDYKLAIV--PK--MTRLRGKYKMDGKVLTLPIRGGNGCSLDAEDTSSLHLVL 154
 RproTO2 NVKNDWKVVTFNAAN--PR--VTLVSKYVMDGKVLTLPIKGDGPCRDIIDNFKSNFTIRF 154
 RproTO3 SVKTDWKEMHFDAEII--PTKVVLDDGKYKIDGKVLVLPINGEGHCRIEFTKFSFAQLKL 159
 RproTO4 NLKTDWKEMHVDVIV--PA--VIAVGTYNVYQVLLPPIQNGFCNLTFTNFSGSGQLKF 156
 RproTO5 SVNWDKSMVVDLIV--PK--LTLRGQYKVMGKVLVLPKRGDGDCKLEFTNYKVINLKI 156
 RproTO6 RFRADWNVYLEAEA--TLNVPLVLLGDYTVKQVVLVPIVGNKCNLTFDNFAVAKLTAKG 159
 RproTO7 KVSARYKDGLSADF--HIDGDFRIESDYTAGKRVVLVPIINGAGKNVLFKFDNLKGLKDMKF 161
 RproTO8 SAKADWNMVSFEA--ALTEPVDITGNYNIDGIIILPPIKGTGTFDLKLEGFRAHILKVGH 161
 RproTO9 HVRLNPKTVEIDVNA--ILSKPVVLTGNVYSQKILTLPIRGGGKFNITLNMRAVLKMRG 159
 RproTO10 ASRFVDNRKHVVWVKI--AVPR--LTLSSKYKVAGRFVLVPIGSGSPATVMLESFMLTYKFDY 163
 RproTO11 DILDKLNLKKHIDIRL--SIPR--LMVTGKYDVSQKVLVFPITGKGISNITLTDLDVNAGLDW 158
 RproTO12 AARTDLKRRHIEWDF--YHPF--ITTAGKYEMSQVVLVPIRGRGTANITLNMKMTMFKFDF 163
 RproTO13 HARTGLRDKHIEWDF--KI PK--IEIISDYEVNGQVLLPPIGKGRANVTLTKLDTIYKYDW 164
 RproTO14 SADVNMEDRKRWEF--TLDK--MKVTGKYNVYQVLLPPIVSGSDALINLENLKSFLYLDW 168
 RproTO15 KADMFNNTNHHKMDF--TLSK--MRVVGKYNVSGQVLLPPIGAGDAEFKFNILKFSIYDT 164

DmelTO
 RproTO1
 RproTO2
 RproTO3
 RproTO4
 RproTO5
 RproTO6
 RproTO7
 RproTO8
 RproTO9
 RproTO10
 RproTO11
 RproTO12
 RproTO13
 RproTO14
 RproTO15

* * * * *

