



HAL
open science

Co-occurring nematodes and bacteria in submarine canyon sediments

Jadwiga Rzeznik-Orignac, Antoine Puisay, Evelyne Derelle, Erwan Peru, Nadine Le Bris, Pierre Galand

► **To cite this version:**

Jadwiga Rzeznik-Orignac, Antoine Puisay, Evelyne Derelle, Erwan Peru, Nadine Le Bris, et al.. Co-occurring nematodes and bacteria in submarine canyon sediments. PeerJ, 2018, 6, pp.e5396. 10.7717/peerj.5396 . hal-02506163

HAL Id: hal-02506163

<https://hal.science/hal-02506163v1>

Submitted on 28 May 2020

HAL is a multi-disciplinary open access archive for the deposit and dissemination of scientific research documents, whether they are published or not. The documents may come from teaching and research institutions in France or abroad, or from public or private research centers.

L'archive ouverte pluridisciplinaire **HAL**, est destinée au dépôt et à la diffusion de documents scientifiques de niveau recherche, publiés ou non, émanant des établissements d'enseignement et de recherche français ou étrangers, des laboratoires publics ou privés.



Distributed under a Creative Commons Attribution 4.0 International License

Co-occurring nematodes and bacteria in submarine canyon sediments

Jadwiga Rzeznik-Orignac¹, Antoine Puisay^{1,2}, Evelyne Derelle^{3,4}, Erwan Peru¹, Nadine Le Bris¹ and Pierre E. Galand¹

¹ Laboratoire d'Ecogéochimie des Environnements Benthiques, LECOB, Sorbonne Université, CNRS, Banyuls-sur-Mer, France

² Criobe, Laboratoire d'Excellence "Corail", PSL Research University: EPHE-UPVD-CNRS, Papetoai, French Polynesia

³ Laboratoire de Biologie Intégrative des Organismes Marins, Sorbonne Université, CNRS, Banyuls-sur-Mer, France

⁴ LEMAR UMR 6539 CNRS/UBO/IRD/Ifremer, IUEM, Plouzané, France

ABSTRACT

In submarine canyon sediments, bacteria and nematodes dominate the benthic biomass and play a key role in nutrient cycling and energy transfer. The diversity of these communities remains, however, poorly studied. This work aims at describing the composition of bacteria and nematode communities in the Lacaze-Duthiers submarine canyon in the north-western Mediterranean Sea. We targeted three sediment depths for two consecutive years and investigated the communities using nuclear markers (18S rRNA and 16S rRNA genes). High throughput sequencing combined to maximal information coefficient (MIC) statistical analysis allowed us to identify, for the first time, at the same small scale, the community structures and the co-occurrence of nematodes and bacteria Operational Taxonomic Units across the sediment cores. The associations detected by MIC revealed marked patterns of co-occurrences between the bacteria and nematodes in the sediment of the canyon and could be linked to the ecological requirements of individual bacteria and nematodes. For the bacterial community, *Delta*- and *Gammaproteobacteria* sequences were the most abundant, as seen in some canyons earlier, although *Acidobacteria*, *Actinobacteria* and *Planctomycetes* have been prevalent in other canyon sediments. The 20 identified nematode genera included bacteria feeders as *Terschellingia*, *Eubostrichus*, *Geomonhystera*, *Desmoscolex* and *Leptolaimus*. The present study provides new data on the diversity of bacterial and nematodes communities in the Lacaze-Duthiers canyon and further highlights the importance of small-scale sampling for an accurate vision of deep-sea communities.

Submitted 1 February 2018

Accepted 17 July 2018

Published 31 July 2018

Corresponding author

Jadwiga Rzeznik-Orignac,
jadwiga.orignac@obs-banyuls.fr

Academic editor

Ramy Aziz

Additional Information and
Declarations can be found on
page 13

DOI 10.7717/peerj.5396

© Copyright

2018 Rzeznik-Orignac et al.

Distributed under

Creative Commons CC-BY 4.0

OPEN ACCESS

Subjects Biodiversity, Ecology, Marine Biology, Molecular Biology, Taxonomy

Keywords Bacteria, Meiofauna, Canyon Lacaze-Duthiers, Metabarcoding, Molecular approach, Mediterranean Sea, Nematodes, Marine biodiversity, 18S, 16S

INTRODUCTION

Submarine canyons represent deep incisions in the continental slope, that enlarge the heterogeneity of deep-sea habitats on the shelf break and generate biodiversity (Levin et al., 2010). Canyons are widespread, and many of them were described to actively transport sediments and organic debris directly from shallow waters to the deep-sea

(*De Leo et al., 2010*). In the Gulf of Lion (the north-western Mediterranean Sea), water transport driven by density contrast between surface and deeper waters occurs in winter through the formation of dense surface shelf waters by cold winds (*Canals et al., 2006*). This cascading phenomenon, and more generally the hydrodynamic features (including storm downwelling and eddies) promoting a fast and episodic transfer of organic material from the shelf to the deep sea, convert canyons into hotspots of benthic biomass (*De Leo et al., 2010*).

In canyon sediments, bacteria dominate benthic biomass and play a key role in nutrient cycling and energy transfer (*Danovaro et al., 2010; Pusceddu et al., 2012*). Our knowledge of the bacteria dwelling submarine canyon sediments is, however, limited. Early studies based on quantitative approaches showed that canyon sediments had higher densities of bacterial abundance compared to densities found in other deep-sea sediments at similar depth (*Danovaro et al., 1999*). The few existing qualitative studies are limited to descriptions at the phylum or class level and show high proportion of *Acidobacteria*, *Actinobacteria* and *Gammaproteobacteria* in surface sediments at the mouth of a canyon in the Eastern Mediterranean (*Polymenakou et al., 2009*) and *Gammaproteobacteria* and *Planctomycetes* in the Monterey Canyon (*Goffredi & Orphan, 2010*). A recent study, however, showed the dominance of *Gamma-* and *Deltaproteobacteria* in canyons in the Gulf of Mexico and off the coast of California (*Crespo-Medina et al., 2016; Harrison et al., 2018*). A study of the structure of bacterial community by fingerprinting techniques showed differences in composition in sediment surface layers between canyons in the north-eastern Atlantic Ocean but the identity of the bacteria was not reported (*Amaro et al., 2009*).

The meiofauna, that is, benthic invertebrates (<1 mm in size), also plays a major role in the ecology of canyon sediments (*Danovaro et al., 2010; Gambi, Lampadariou & Danovaro, 2010*). Meiofauna is very abundant, accounts for the main part of the metazoan diversity and plays an important role in the maintenance of marine biogeochemical cycle (*Giere, 2009*). Typically, meiofaunal abundance and biomass are higher in canyon sediments compared to other habitats at comparable depths (*Rosli et al., 2016*). This is attributed to the accumulation of organic matter in canyons which may stimulate their growth.

Free-living nematodes are among the most abundant and diverse metazoans of meiofaunal taxa in deep-sea sediments (*Vincx et al., 1994*). The nematodes often show an aggregated vertical distribution within sediments that is attributed to different driving factors. For example, in coastal sediments, the tidal cycle is the most important factor that affects the chemical and physical micro-environment structure and drives the distribution of nematodes (*Harris, 1972; Joint, Gee & Warwick, 1982; Steyaert et al., 2001, 2003*). In more stable sub-tidal and deep-sea habitats biogenic factors, such as food supply or animal interactions, gain importance. Among them, the most relevant and ubiquitous biogenic factors that are correlated to nematode vertical distribution are the abundance of detritus, protists and bacteria (*Giere, 2009; Ingels et al., 2013*). However, oxygen penetration and the occurrence of sulfide are thought to be

some of the important regulating factors explaining vertical distribution patterns (Steyaert *et al.*, 2003).

While there is a general paucity of data on co-occurrence of nematodes and bacteria in deep-sea sediments (Ingels *et al.*, 2011), insight into the small-scale (corresponding to about one cm³ of sediment) community structure is required to understand the biogeochemical and ecological processes that play key functional roles in marine sediments. Previous works addressing the question with quantitative tools reported contrasting results. High numbers and biomass of meiofauna correlated with low numbers and biomass of bacteria in sandy beach sediments (Meyer-Reil & Faubel, 1980), absence of correlation between meiofauna and bacterial biomass in the deep Aegean Sea (Danovaro *et al.*, 1995), but strong correlation between meiofaunal densities and viable bacterial number in the deep part of Gulf of Lion (De Bovée, Guidi & Soyer, 1990) were also observed. Recent work that targeted more precisely some ecosystem processes showed that ecological interactions between meiofauna and benthic bacteria are important in the ecology of sediments (Thurber, 2015). Nitrogen cycling may be regulated by these interactions as shown by the stimulating effect that meiofauna has on nitrifying and denitrifying bacteria (Bonaglia *et al.*, 2014). Meiofauna may also enhance the mineralization of organic matter by stimulating the activity of sediment bacterial community (Nascimento, Näslund & Elmgren, 2012), while higher abundances of meiofauna may decrease the microbial mineralization of naphthalene by modifying the bacterial community composition through bacterial grazing by metazoans (Näslund, Nascimento & Gunnarsson, 2010).

The present study had two complementary purposes: to characterize the diversity of the nematodes and the bacteria in the sediment of the Lacaze-Duthiers submarine canyon, and to investigate patterns of co-occurrence between individual bacteria and nematode taxa. We studied the communities by sequencing the 18S rRNA and 16S rRNA genes to describe eukaryotic and bacterial communities respectively.

MATERIALS AND METHODS

Sample collection and processing

Sampling was carried out in the head of the Lacaze-Duthiers canyon in the Gulf of Lion (NW Mediterranean, 42°32'26"N, 03°25'9"E) (Fig. S1). Three sediment cores (six cm of diameter and 18 cm of height) were collected in September 2011 and three in July 2012 at 525 m depth using a multiple mini corer (OSIL, Havant, UK) deployed from the research vessel Minibex. The remotely operated underwater vehicle used for exploration and experiment deployment in this area of the canyon hosting abundant cold-water coral assemblages on rocky outcrops allowed to precisely position the corer and sample the sediment in the same area for both sampling campaigns. On board, each core was immediately cut horizontally and samples were gathered from three different layers: 0–1, 3–5 and 16–18 cm. The sediment is a mud containing more than 90% of silt. The subdivision into three different layers, 0–1, 3–5 and 16–18 cm, is based on the on board visual analysis of sediment cores that allowed us to develop a sampling protocol used throughout the series of sampling campaigns. We wanted contrasted types of sediments so

we chose: the 0–1 cm deep layer that represents the surface sediment layer, the 3–5 cm layer that corresponds to changes in sediment color and usually contains high nematode abundances, and the 16–18 cm layer that represents the dark completely anoxic sediment layer. All material was carefully washed with ethanol before cutting each layer to prevent any contamination. Sediment from each layer was gently homogenized. Sediment samples (about one g wet weight) dedicated to bacterial analysis were immediately frozen at -80°C and the ones for nematodes analysis were stored at 10°C in order to preserve (3 h) living animals until return to the shore-based laboratory of the Marine Station of Banyuls). In the laboratory, the sediment samples dedicated to analyze the nematodes were immediately processed by centrifugation in Ludox solution to separate the metazoans from the sediment (Heip, Vincx & Vranken, 1985). Then, the extracted meiofauna was frozen at -80°C until DNA extraction.

DNA extraction

DNA for nematode analysis was extracted using the CTAB method with manual grinding (Winnepenninckx, Backeljau & De Wachter, 1993). The protocol applied to analyze of meiofauna was previously described in Rzeznik-Orignac et al. (2017). Eukaryotic 18S rRNA genes were amplified using universal primers Euk528 (5'-CCGCGGTAATTCAGCTC-3') and R18 (5'-CGTTATCGGAATTAACCAGAC-3'). Eukaryotic sequences could only be obtained from two cores (1 in 2011 and 1 in 2012) and these two cores were chosen for prokaryotic sequencing. Bacterial DNA was extracted directly from one g of sediment using the PowerSoil kit (MoBio, Carlsbad, CA, USA) following the manufacturer's instructions. Bacterial 16S rRNA genes were amplified using primers 28F (5'-TTTGATCNTGGCTCAG-3') and 519 R (5'-GTNTTACNGCGGCKGCTG-3'). Sequence data were deposited in the GenBank/EMBL/DDBJ short-read archive as submission ID: [SRP127023](#) and [SRP137819](#) (for 16S and 18S respectively).

Pyrosequencing and sequence analysis

The 16S and 18S rRNA genes were sequenced with a Roche 454 FLX using Titanium reagents by a commercial laboratory (Research and Testing Laboratory, Lubbock, TX, USA). The quality of the sequences was controlled by removing all reads that had a mismatch with the 16S and 18S rRNA genes primers, contained ambiguous nucleotides (N) or that were less than 230 nucleotides long after the forward primer. Reads having $\geq 3\%$ of bases with Phred values < 27 (0.2% per-base error probability) were removed. This is recommended to ensure that, when clustering at 97%, the influence of erroneous reads is minimized (Huse et al., 2010; Kunin et al., 2010). Sequences were then de-replicated and clustered at a 97% threshold using Uclust algorithm (Edgar, 2010). Read quality filtering and length trimming, de-replication, clustering at 97% sequence identity, taxonomic classification and dataset partitioning based on barcodes were conducted with Pyrotagger (Kunin & Hugenholtz, 2010). Sequences from each Operational Taxonomic Units (OTU) were classified by comparison to the Greengenes database (DeSantis et al., 2006) and Silva database for bacteria and eukaryotes respectively. The taxonomic affiliations of the most abundant OTUs ($> 1\%$ of the sequences) were further verified

against sequences from the National Center for Biotechnology Information databases using BLAST (Altschul *et al.*, 1997). For bacteria, datasets were randomly resampled down to 759 sequences per sample using daisy-chopper (Gilbert *et al.*, 2009), which represent the number of sequences in the smaller sample, for an unbiased comparison of diversity.

Data analysis

We calculated richness and the Shannon diversity index for all communities with the program PAST (Hammer, Harper & Ryan, 2001). The relationship between communities within the domain bacteria and within the eukaryotes was estimated by cluster analysis based on Bray–Curtis dissimilarity indexes calculated between communities and used to construct a dendrogram with an unweighted pair group method with arithmetic mean. For bacteria, we used abundance data whereas we used presence–absence data for nematodes due to more variable 18S rRNA gene copy number between species.

The co-occurrence of bacterial and nematode OTUs was analyzed through MINE statistics by calculating the maximal information coefficient (MIC) between each pair of OTUs (Reshef *et al.*, 2011). MIC captures associations between data and provides a score that represents the strength of a relationship between data pairs. The matrix of MIC values >0.5 and corresponding to positive linear correlations was used with Cytoscape 3.1.1 to visualize the network of associations (Smoot *et al.*, 2011). In these visualizations, OTUs are represented as nodes and are connected by lines that are proportional in length to the MIC value. The force-directed layout was edge-weighted by the MIC value. The presence of sub-networks within the main network was assessed with the CytoCluster application using the graph clustering algorithms HC-PIN with default options (Wang *et al.*, 2011).

RESULTS

Community composition

For bacteria, a cluster analysis of community composition showed that communities changed with depth for both sampling years (Fig. 1). The two deeper layer samples grouped together, separated from the intermediate layer that was again different from the surface layer. The surface layer communities appeared to be the most variable in composition, as the samples from 2011 to 2012 did not group together. The surface layer communities had in average higher richness (number of OTUs) and diversity (Shannon H) than deeper samples (Table 1).

For nematodes, a cluster analysis (Fig. 2) of community composition did not show any clear grouping either by depth layers or by sampling periods. The surface layers communities appear to be more variable in composition than intermediate and deep layers communities. Only, two deep layers were gathered into the same cluster. In regard to the OTUs richness, no trend could be observed either by deep layers or by year (Table 2).

Co-occurrence of bacteria and nematodes

The association network constructed from the MIC values showed that bacteria and nematode OTUs separated in four different subnetworks. Group 1, with highest

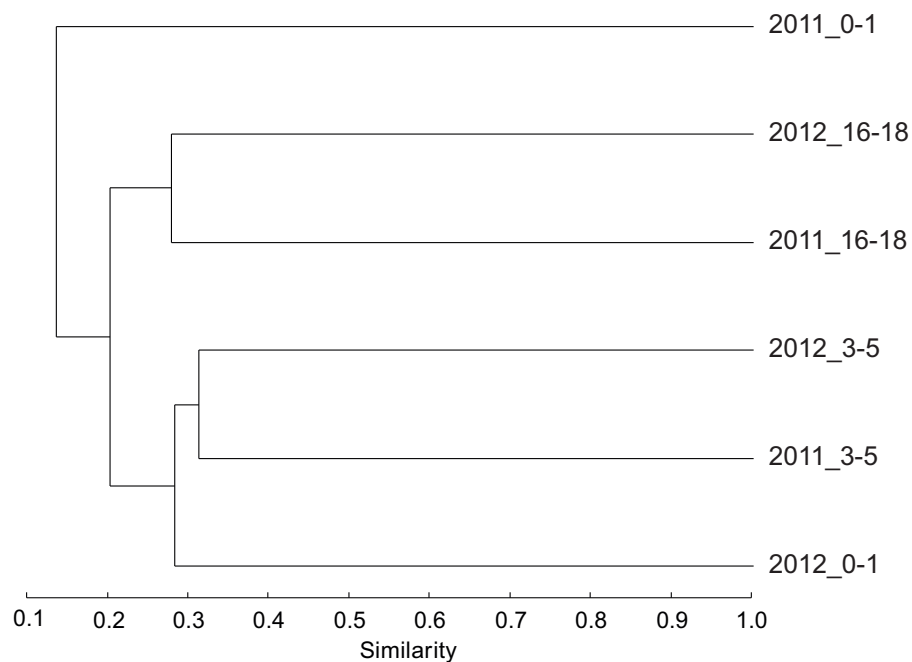


Figure 1 The similarity between bacterial communities. Dendrogram based on the Bray–Curtis index showing the similarity between bacterial communities sampled in 2011 and 2012 from sediment surface (0–1 cm), intermediate (3–5 cm) and deep layers (16–18 cm) in the Lacaze-Duthiers submarine canyon.

Full-size DOI: [10.7717/peerj.5396/fig-1](https://doi.org/10.7717/peerj.5396/fig-1)

Table 1 Bacterial sequences.

	Sequences	OTUs	Shannon_H
2012_0–1	786	417	5.7
2012_3–5	793	409	5.6
2012_16–18	1,160	390	5.5
2011_0–1	1,887	513	6.0
2011_3–5	759	409	5.7
2011_16–18	1,061	413	5.6

Note:

Number of bacterial sequences, number of OTUs and Shannon index obtained for bacterial communities sampled in 2011 and 2012 from sediment surface (0–1 cm), intermediate (3–5 cm) and deep layers (16–18 cm).

modularity (i.e., densest connections between nodes) (Fig. 3), contained bacteria belonging to *Deltaproteobacteria*, *Gammaproteobacteria*, *Alphaproteobacteria*, *Bacteroidales* and *Chlorobi* (Fig. 4). *Chlorobi* (OTU 188) was only detected in group 1 and the OTU was similar to sequences found in anoxic sediments. All OTUs had only low similarity (<93%) with cultured microorganisms. This subnetwork contained eight nematodes genera belonging to non-selected deposit-feeders (*Daptonema*, *Theristus* and *Odontophora*), predators (*Enoplus* and *Halichoanolaimus*), selective deposit-feeders (bacteria feeders) (*Desmoscolex* and *Geomonhystera*), and one epigrowth feeder (*Molgolaimus*) (Fig. 5). Among these eight genera found in the subnetwork, a large proportion of sequences came from *Halichoanolaimus*.

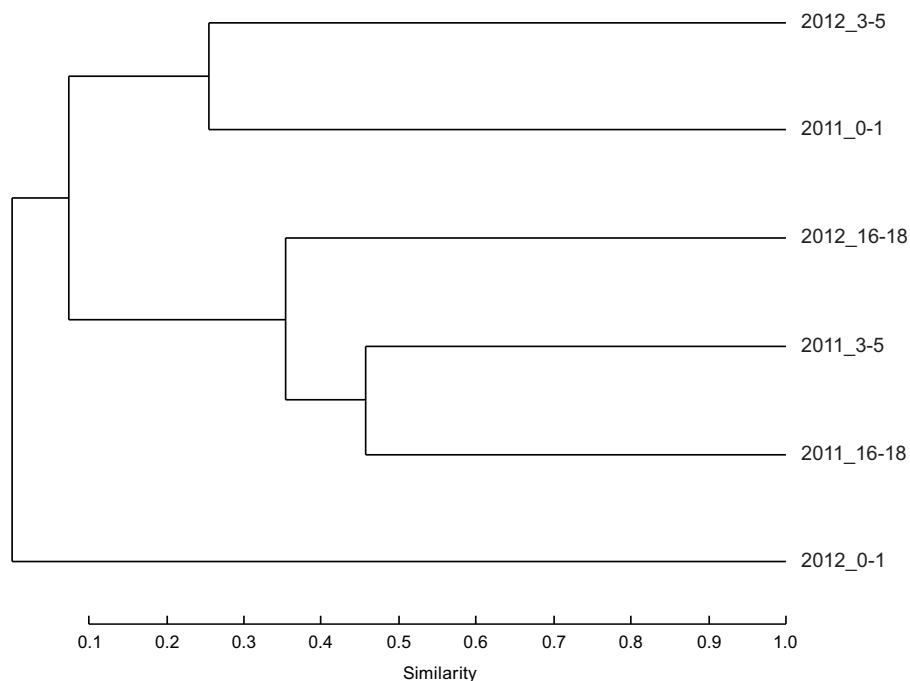


Figure 2 The similarity between nematode communities. Dendrogram based on the Bray–Curtis index showing the similarity between nematode communities sampled in 2011 and 2012 from sediment surface (0–1 cm), intermediate (3–5 cm) and deep layers (16–18 cm) in the Lacaze-Duthiers submarine canyon.

Full-size [DOI: 10.7717/peerj.5396/fig-2](https://doi.org/10.7717/peerj.5396/fig-2)

Table 2 Nematode sequences.

	Sequences	OTUs	Shannon_H
2012_0–1	196	28	2.72
2012_3–5	6,196	53	1.70
2012_16–18	1,627	12	1.10
2011_0–1	3,019	35	1.31
2011_3–5	701	15	1.63
2011_16–18	945	35	2.30

Note:

Number of nematodes' sequences, number of OTUs and Shannon index for nematode communities sampled in 2011 and 2012 from sediment surface (0–1 cm), intermediate (3–5 cm) and deep layers (16–18 cm).

The second subnetwork, group 2, contained a large majority of bacterial sequences affiliated to *Deltaproteobacteria* followed by *Gammaproteobacteria* (Fig. 4). Among *Deltaproteobacteria*, 19% of the sequences were identified as belonging to potential sulfate reducers. The group contained 10 nematode genera among them: epigrowth feeders (*Desmodora*, *Dorylaimopsis* and *Prochromadora*), non-selective deposit-feeders (*Axonolaimus*, *Daptonema* and *Theristus*) as well as bacteria feeders but they were different from those detected in the first subnetwork (*Terschellingia* and *Leptolaimus*), and predators (*Halichoanolaimus* and *Viscosia*). A large proportion of nematodes' sequences were affiliate to *Terschellingia* (Fig. 5).

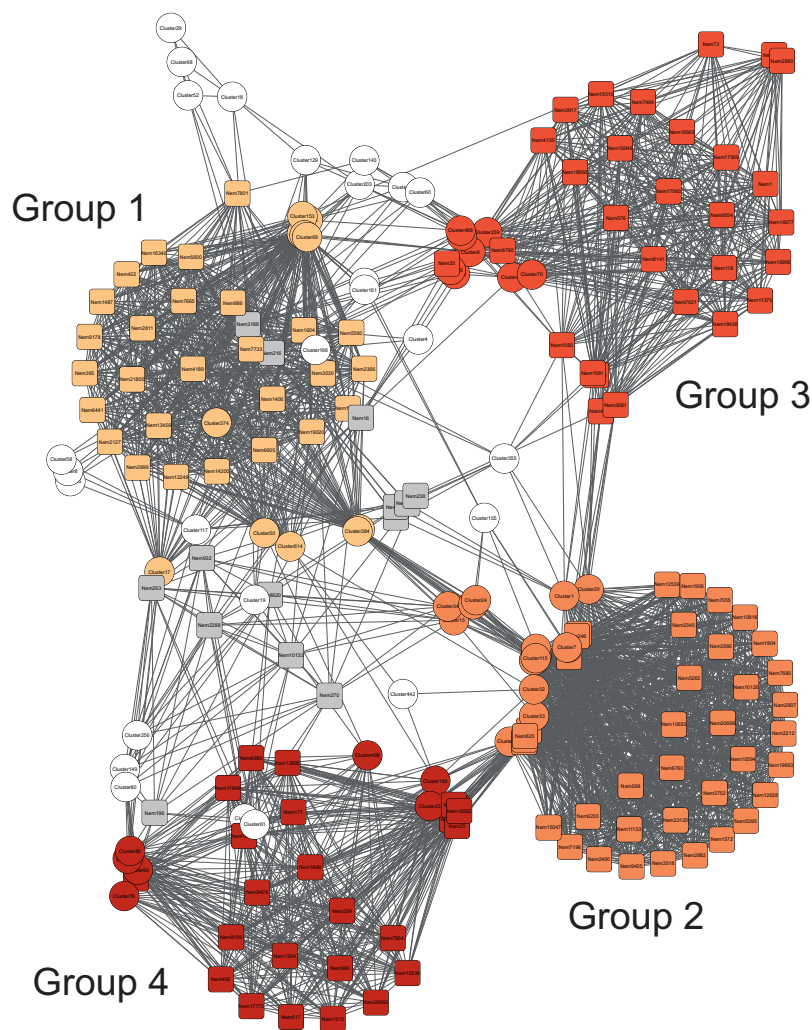


Figure 3 Association network of the nematode and bacteria communities. Association network of the nematode (squares) and bacteria (circles) communities in which nodes correspond to OTUs and edges correspond to relationships calculated with the MIC statistics. Colors highlight the four different sub-networks (groups) defined with the HC-PIN algorithm (see Methods).

Full-size  DOI: [10.7717/peerj.5396/fig-3](https://doi.org/10.7717/peerj.5396/fig-3)

The next subnetwork, group 3, contained mostly sequences from *Deltaproteobacteria* but these were not the same as the ones found in group 2. Less abundant groups such as *Fusobacteriales* were found only in group 3 (Fig. 4). The main *Fusobacteriales* OTU was similar (98%) to an anaerobic strain of *Propionigenium maris* able to ferment carbohydrates (Janssen & Liesack, 1995). The most abundant *Deltaproteobacteria* was distantly related (90%) to the sulfate reducer *Desulfosarcina variabilis*. Group 3 also contained sequences affiliated to *Nitrospirales*. In this subnetwork, eight nematode genera were found; among them were bacteria feeders (*Terschellingia*, *Leptolaimus* and *Geomonhystera*) and predators (*Oncholaimus*, *Halichoanolaimus* and *Viscosia*) (Fig. 5). The subnetwork contained only one non-selective deposit-feeder (*Axonolaimus*) and one epigrowth feeder (*Dorylaimopsis*). The network contained mostly the sequences of *Dorylaimopsis*.

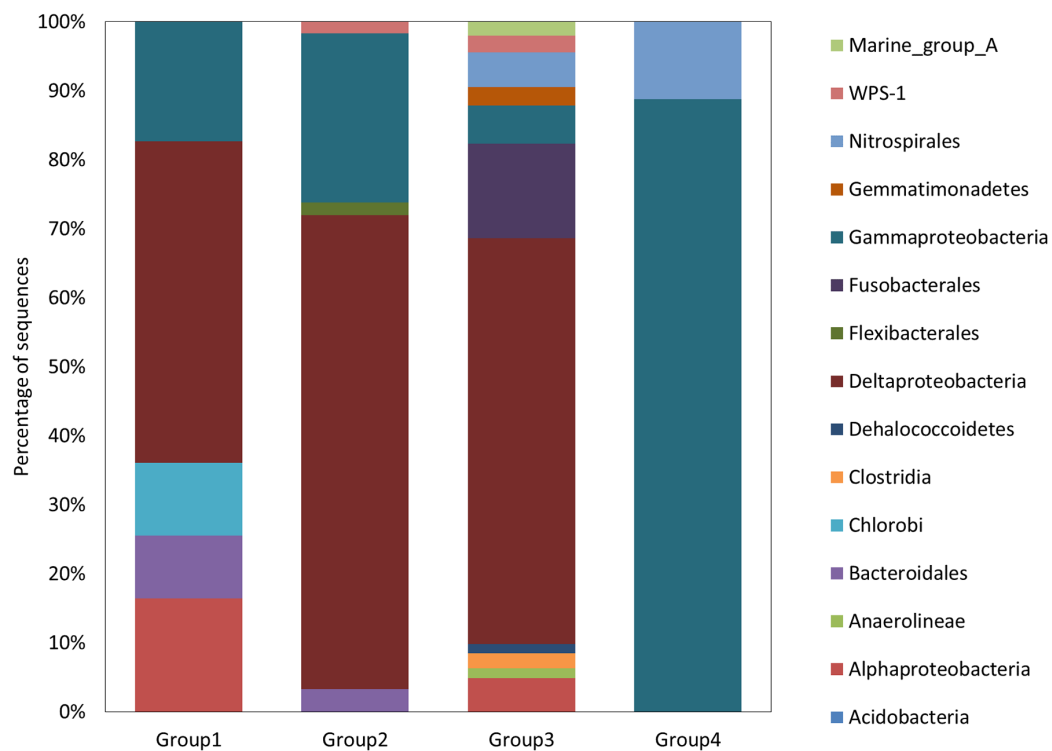


Figure 4 Bacterial diversity. Relative proportions of the bacterial phylum or class found in the four subnetworks. [Full-size](#) DOI: 10.7717/peerj.5396/fig-4

The last subnetwork, group 4, was characterized by the presence of sequences belonging to the genus *Nitrosospira* (Fig. 4) that were similar (96%) to strains of ammonia oxidizers (Purkhold, 2003). Many group 4 sequences belonged to *Gammaproteobacteria*, of which some were possible sulfur-oxidizing bacteria (OTU 76). Regarding the nematodes, this subnetwork contained 11 genera: four genera were classified as epigrowth feeders (*Dichromadora*, *Prochromadora*, *Dorylaimopsis*, *Procamacolaimus*), three genera as predators (*Halichoanolaimus*, *Viscosia* and *Enoploides*), two as bacteria feeders (*Eubostrichus* and *Geomonhystera*) and two as non-selective deposit-feeders (*Daptonema* and *Odontophora*) (Fig. 5). This sub network had the highest proportion of sequences affiliated to *Daptonema*.

DISCUSSION

In this paper, we present the first detailed description of the bacterial and nematodes diversity in a submarine canyon based on high throughput sequencing analysis. Earlier studies have shown a higher biomass of meiofauna and bacteria along the axes of canyon sediments compared to other seafloor areas at similar depth (Danovaro et al., 1999) but the detailed composition of the communities has never been reported and possible associations between nematodes and bacteria are not known. We found that at the class level, *Delta*- and *Gammaproteobacteria* sequences were the most abundant. This result is in accordance with recent studies showing the dominance of *Delta*-, *Gamma*- and *Epsilonproteobacteria* in a canyon in the Gulf of Mexico (Crespo-Medina et al., 2016) and

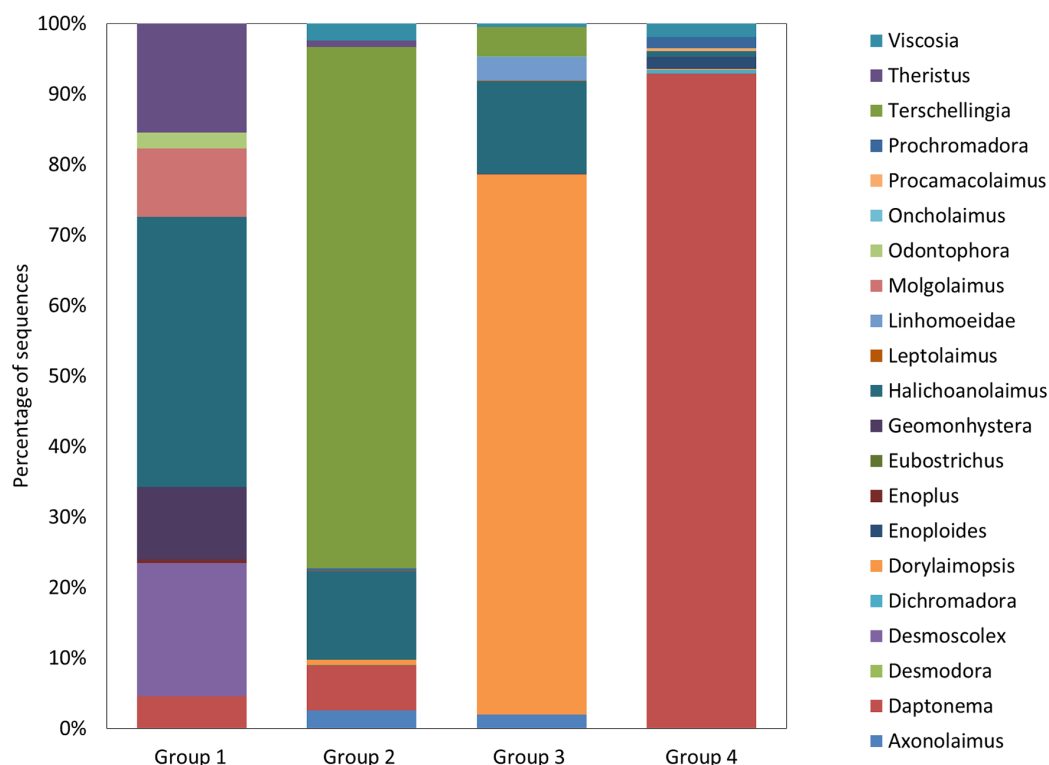


Figure 5 Nematode diversity. Relative proportions of the nematodes' genera found in the four subnetworks. [Full-size !\[\]\(ba1b80118482ccef74a5d718ca4d7242_img.jpg\) DOI: 10.7717/peerj.5396/fig-5](https://doi.org/10.7717/peerj.5396/fig-5)

Delta- and *Gammaproteobacteria* off the coast of California (Harrison *et al.*, 2018). It differs, however, from earlier studies that showed sediments characterized by *Acidobacteria*, *Actinobacteria* and *Planctomycetes* in the Eastern Mediterranean (Polymenakou *et al.*, 2009) and in the Monterey Canyon (Goffredi & Orphan, 2010). At the OTU level, most sequences were only distantly related to known organisms but the similarity to some cultured strains suggested the presence of bacteria potentially associated to the sulfur and nitrogen cycles. In these sediments, bacteria showed a clear stratification with depth as generally described along redox gradient in marine sediments (Jorgensen *et al.*, 2012).

The number of nematodes genera encountered in our study (20 genera) is comparable to those reported for the north-western Mediterranean (Catalan margin), including two canyons (Cap de Creus and Lacaze-Duthiers), and based on analysis of 12 stations (Danovaro *et al.*, 2009). The nematode community of the Lacaze-Duthiers canyon includes essentially nematodes already encountered in deep-sea sediments (Soetaert & Heip, 1995; Danovaro *et al.*, 2009; Hasemann & Soltwedel, 2011; Tchesunov, Ingels & Popova, 2012; Sevastou *et al.*, 2013). We were able to detect the presence of four trophic types, among them: (1) bacteria feeders as *Terschellingia*, *Eubostrichus*, *Geomonhystera*, *Desmoscolex* and *Leptolaimus*, (2) non-selective deposit-feeders as *Daptonema*, *Theristus*, *Axonolaimus*, *Odontophora*, (3) epistrate feeders as *Dorylaimopsis*, *Desmodora*, *Molgolaimus*, *Prochromadora* and (4) predators as *Halichoanolaimus*, *Enoploides*, *Enoplus*, *Viscosia* and *Oncholaimus*.

The separation with depth was not as clear for nematodes as for bacteria community. The difference may be due to the method that we used. We chose to analyze the same quantity of sediment (one g) for both eukaryote and bacteria communities to be able to make a direct comparison between the two domains of life. Such a sample volume, which is classically used to cover bacterial diversity in sediments, may be too small to cover the full diversity of larger meiofauna organisms. Some nematodes may not have been present in the gram of sediment and it may have created artificial differences between samples. A larger volume of sediment may give a higher resolution of the meiofauna diversity. We could also have compared community composition between replicate samples, but, unfortunately, it was not possible in the present study. However, the fact that communities grouped with depth 2 years in row is a good indication that the sampling gave a fair representation of the biological conditions in situ.

Despite the different patterns of depth stratification showed by nematodes and bacteria, we were able to identify four groups of bacterial OTUs co-occurring with nematode OTUs by calculating correlations and conducting network analysis. Different combinations of bacteria and nematodes OTUs characterize each of the four groups identified. Group 4 appears to contain species able to cope with the presence of oxygen since we detected *Nitrospirales* known as potential nitrifiers that gain energy via conversion of nitrite to nitrate and live in aerobic environment (Bock & Wagner, 2006). The presence of possible sulfur-oxidizing bacteria is also an indication that group 4 organisms are living in an aerobic environment. Among nematodes, *Daptonema* OTUs are the most abundant in this group. *Daptonema* is considered as a non-selective deposit feeder. These nematodes are opportunistic feeders capable of ingesting a variety of food particles, including microalgae, bacteria and detrital particles (Moens & Vincx, 1997). The field data indicates that *Daptonema* prefers to live in surface sedimentary layers (Soetaert et al., 1995) avoiding the deeper layers with decreasing dissolved oxygen concentrations (Steyaert et al., 2003).

Group 3 contains aerobic microorganisms, as suggested by the presence of *Nitrospirales*, but also anaerobes as implied by the presence of possible sulfate reducing bacteria from the class *Deltaproteobacteria*, which use sulfate as electron acceptor in the absence of oxygen. Among nematodes, many OTUs of *Dorylaimopsis* are found. They are classified as epistrate feeders (Singh & Ingole, 2016), which scrape the microbiota from solid surfaces or feed on bacterial mucus threads (Giere, 2009). High abundances of epistrate feeders have been already reported in deep-sea habitats (Vincx et al., 1994).

Group 2 is characterized by the presence of potential sulfate reducers and can thus be defined by the presence of anaerobic bacteria. For nematodes, a large majority of the sequences are affiliated to *Terschellingia*, a cosmopolitan nematode, which tends to be very abundant in hypoxic or anoxic sediments (Steyaert et al., 2007) where chemosynthetic processes are important. *Terschellingia* is a microvore with a very small buccal cavity, enabling ingestion of only bacteria-size particles (Moens & Vincx, 1997). Stable isotopes analysis carried out at genus level indicated that *Terschellingia* relies predominantly or even exclusively on chemoautotrophic sulfide oxidizing and other oxidizing bacteria (Vafeiadou et al., 2014), but the finding of their co-occurrence with sulfate reducers may also suggest that they can prey on other type of bacteria.

Group 1 microorganisms are also possible anaerobes. Among nematode OTUs, *Halichoanolaimus* characterizes this group. It belongs to predators-omnivores (Vanhove, Arntz & Vincx, 1999; Singh & Ingole, 2016), which have diverse feeding habits and food sources. *Halichoanolaimus* feeds indiscriminately on other nematodes as well as bacteria and microorganisms. This nematode was already found in deep-sea anoxic sediments (Singh & Ingole, 2016).

In most of cases, the associations within groups could be linked to the ecological requirements of the nematodes and bacteria. For example, group 4 contains species able to cope with the presence of oxygen, including *Eubostrichus*, typically found in boundary zone of redox-potential-discontinuity, where sulfide and oxygen are simultaneously present (Schiemer, Novak & Ott, 1990; Berger, Urbancik & Ott, 1996). This nematode is remarkable because of its obligatory association with sulfide-oxidizing ectosymbiotic bacteria covering its entire body in an ordered and specific pattern (Ott et al., 1991; Polz, Harbison & Cavanaugh, 1999; Maurin et al., 2010). In this study, it is difficult to say whether the sulfide-oxidizing bacteria found in the group 4 are associated with the sediment environment or if they are the ectosymbionts colonizing nematode cuticle. The migration of the nematodes between sulfidic and oxic sediment layers may benefit the nematode-bacteria symbiosis (Schiemer, Novak & Ott, 1990). These sulfide-oxidizing bacteria may gain energy through sulfide oxidation and potentially recharge reduced sulfur storage under the form of elemental sulfur while the nematode stays in the sulfidic layer of the sediment and subsequently they gain energy from the oxidation of reduced sulfur when the nematode migrates into oxic layers (Schiemer, Novak & Ott, 1990; Ott et al., 1991). The migration behavior could also favor the storage of nitrate by bacteria in the oxic and suboxic layer as shown for free-living Beggiatoa bacteria (Preisler et al., 2007). The advantage chemosynthetic energy supply by its bacteria could explain the occurrence of this nematode under aerobic conditions. No free sulfide was detected in the sediment collected in associated cores down to 15 cm (Yücel, 2013). Nevertheless, black patches were observed and denoted the presence of sulfidic microniches as described by Stockdale, Davison & Zhang (2009). Sulfur cycling may be driven here by the export of plant debris such as wood, which was shown to sustain sulphate-reducing microbes producing sulfide (Charles et al., 2014; Kalenitchenko et al., 2017).

Furthermore, predatory nematodes are observed in all the groups. The importance of bacteria as food source or symbiotic associations for these nematodes remain poorly documented. The observation of predatory behavior on living nematodes (Moens & Vincx, 1997) suggests that they are mobile in the sediment (Schiemer, Novak & Ott, 1990). This observation rather underlines the need to take into account the existence of temporal aggregations in the nematode communities. It also highlights the fact that bacteria population in the sediment are not only structured by the vertical redox-gradient but also by interactions such as predation. Such biotic factors remain poorly understood and deserve further dedicated studies for a better understanding of the microbial functioning of deep-sea benthic ecosystem.

CONCLUSION

The present study provides new data on the diversity of bacterial and nematodes communities in the Lacaze-Duthiers canyon, which represents a particularly heterogeneous deep-sea habitat over space and time. Specifically, high throughput sequencing approaches combined to MIC statistical analysis allowed us to identify, for the first time, at the same micro-scale, the community structures and the co-occurrence of nematodes and bacteria OTUs across the sediment depths. This detailed analysis reveals marked patterns of co-occurrences between the bacteria and nematodes in the sediment of the canyon. The result highlights the importance of small-scale sampling and combines diversity assessment for an accurate analysis of the variability and potential functions of deep-sea communities. The design of the present study may have missed some nematodes, and it did not allow to identify the environmental drivers lying behind the observed bacteria–nematodes associations, but the results provide useful data for future researches.

ACKNOWLEDGEMENTS

We thank Marjorie Bideau and Dimitri Kalenitchenko for helping in preparation of mini corer and cutting the sediment cores. We thank the crew of the R/V “Minibex” (COMEX) for their assistance during fieldwork.

ADDITIONAL INFORMATION AND DECLARATIONS

Funding

This work was supported by the project “PROMETHEE” (APEGE programme CNRS-InEE). The ROV cruises and samplings were performed under the frame of the long-term research programme dedicated to the Lacaze-Duthiers canyon ecosystem developed under the chair of “Extreme marine environments, Biodiversity, and Global change” supported by Foundation TOTAL. The funders had no role in study design, data collection and analysis, decision to publish, or preparation of the manuscript.

Grant Disclosures

The following grant information was disclosed by the authors:

“PROMETHEE” (APEGE programme CNRS-InEE).

Lacaze-Duthiers canyon ecosystem developed under the chair of “Extreme marine environments, Biodiversity, and Global change.”

Foundation TOTAL.

Competing Interests

The authors declare that they have no competing interests.

Author Contributions

- Jadwiga Rzeznik-Orignac conceived and designed the experiments, performed the experiments, analyzed the data, contributed reagents/materials/analysis tools, prepared figures and/or tables, authored or reviewed drafts of the paper, approved the final draft.

- Antoine Puisay performed the experiments, analyzed the data, authored or reviewed drafts of the paper, approved the final draft.
- Evelyne Derelle performed the experiments, contributed reagents/materials/analysis tools, authored or reviewed drafts of the paper, approved the final draft.
- Erwan Peru performed the experiments, prepared figures and/or tables, authored or reviewed drafts of the paper, approved the final draft.
- Nadine Le Bris conceived and designed the experiments, performed the experiments, authored or reviewed drafts of the paper, approved the final draft.
- Pierre E. Galand conceived and designed the experiments, performed the experiments, analyzed the data, contributed reagents/materials/analysis tools, prepared figures and/or tables, authored or reviewed drafts of the paper, approved the final draft.

Data Availability

The following information was supplied regarding data availability:

Sequence data were deposited in the GenBank/EMBL/DDBJ short-read archive as submission ID: [SRP127023](#) and [SRP137819](#).

Supplemental Information

Supplemental information for this article can be found online at <http://dx.doi.org/10.7717/peerj.5396#supplemental-information>.

REFERENCES

- Altschul SF, Madden TL, Schäffer AA, Zhang J, Zhang Z, Miller W, Lipman DJ. 1997.** Gapped BLAST and PSI-BLAST: a new generation of protein database search programs. *Nucleic Acids Research* **25**(17):3389–3402 DOI [10.1093/nar/25.17.3389](#).
- Amaro T, Witte H, Herndl GJ, Cunha MR, Billett DSM. 2009.** Deep-sea bacterial communities in sediments and guts of deposit-feeding holothurians in Portuguese canyons (NE Atlantic). *Deep Sea Research Part I: Oceanographic Research Papers* **56**(10):1834–1843 DOI [10.1016/j.dsr.2009.05.014](#).
- Berger E, Urbancik W, Ott JA. 1996.** Eubostrichus topiarius sp. n., a new free-living, marine species of Stilbonematinae (Nematoda: Desmodoridae) from a shallow subtidal sand bottom. *Nematologica* **42**(5):521–536 DOI [10.1163/004625996x00027](#).
- Bock E, Wagner M. 2006.** Oxidation of inorganic nitrogen compounds as an energy source. In: Dworkin M, ed. *The Prokaryotes*. New York: Springer Verlag, 457–495.
- Bonaglia S, Nascimento FJA, Bartoli M, Klawonn I, Brüchert V. 2014.** Meiofauna increases bacterial denitrification in marine sediments. *Nature Communications* **5**(1):5133 DOI [10.1038/ncomms6133](#).
- Canals M, Puig P, De Madron XD, Heussner S, Palanques A, Fabres J. 2006.** Flushing submarine canyons. *Nature* **444**(7117):354–357 DOI [10.1038/nature05271](#).
- Charles F, Coston-Guarini J, Lantoine F, Guarini J-M, Yücel M. 2014.** Ecogeochemical fate of coarse organic particles in sediments of the Rhône River prodelta. *Estuarine, Coastal and Shelf Science* **141**:97–103 DOI [10.1016/j.ecss.2014.03.005](#).
- Crespo-Medina M, Bowles MW, Samarkin VA, Hunter KS, Joye SB. 2016.** Microbial diversity and activity in seafloor brine lake sediments (Alaminos Canyon block 601, Gulf of Mexico). *Geobiology* **14**(5):483–498 DOI [10.1111/gbi.12185](#).

- Danovaro R, Bianchelli S, Gambi C, Mea M, Zeppilli D. 2009.** α -, β -, γ -, δ - and ϵ -diversity of deep-sea nematodes in canyons and open slopes of Northeast Atlantic and Mediterranean margins. *Marine Ecology Progress Series* **396**:197–209 DOI [10.3354/meps08269](https://doi.org/10.3354/meps08269).
- Danovaro R, Company JB, Corinaldesi C, D’Onghia G, Galil B, Gambi C, Gooday AJ, Lampadariou N, Luna GM, Morigi C, Olu K, Polymenakou P, Ramirez-Llodra E, Sabbatini A, Sardà F, Sibuet M, Tselepidis A. 2010.** Deep-sea biodiversity in the Mediterranean Sea: the known, the unknown, and the unknowable. *PLOS ONE* **5**(8):e11832 DOI [10.1371/journal.pone.0011832](https://doi.org/10.1371/journal.pone.0011832).
- Danovaro R, Della Croce N, Eleftheriou A, Fabiano M, Papadopoulou N, Smith C, Tselepidis A. 1995.** Meiofauna of the deep Eastern Mediterranean Sea: distribution and abundance in relation to bacterial biomass, organic matter composition and other environmental factors. *Progress in Oceanography* **36**(4):329–341 DOI [10.1016/0079-6611\(96\)00002-x](https://doi.org/10.1016/0079-6611(96)00002-x).
- Danovaro R, Dinet A, Duineveld G, Tselepidis A. 1999.** Benthic response to particulate fluxes in different trophic environments: a comparison between the Gulf of Lions–Catalan Sea (western-Mediterranean) and the Cretan Sea (eastern-Mediterranean). *Progress in Oceanography* **44**(1–3):287–312 DOI [10.1016/s0079-6611\(99\)00030-0](https://doi.org/10.1016/s0079-6611(99)00030-0).
- De Bovée F, Guidi LD, Soyer J. 1990.** Quantitative distribution of deep-sea meiobenthos in the northwestern Mediterranean (Gulf of Lions). *Continental Shelf Research* **10**(9–11):1123–1145 DOI [10.1016/0278-4343\(90\)90077-y](https://doi.org/10.1016/0278-4343(90)90077-y).
- De Leo FC, Smith CR, Rowden AA, Bowden DA, Clark MR. 2010.** Submarine canyons: hotspots of benthic biomass and productivity in the deep sea. *Proceedings of the Royal Society B: Biological Sciences* **277**(1695):2783–2792 DOI [10.1098/rspb.2010.0462](https://doi.org/10.1098/rspb.2010.0462).
- DeSantis TZ, Hugenholtz P, Larsen N, Rojas M, Brodie EL, Keller K, Huber T, Dalevi D, Hu P, Andersen GL. 2006.** Greengenes, a chimera-checked 16S rRNA gene database and workbench compatible with ARB. *Applied and Environmental Microbiology* **72**(7):5069–5072 DOI [10.1128/AEM.03006-05](https://doi.org/10.1128/AEM.03006-05).
- Edgar RC. 2010.** Search and clustering orders of magnitude faster than BLAST. *Bioinformatics* **26**(19):2460–2461 DOI [10.1093/bioinformatics/btq461](https://doi.org/10.1093/bioinformatics/btq461).
- Gambi C, Lampadariou N, Danovaro R. 2010.** Latitudinal, longitudinal and bathymetric patterns of abundance, biomass of metazoan meiofauna: importance of the rare taxa and anomalies in the deep Mediterranean Sea. *Advances in Oceanography and Limnology* **1**(1):167–197 DOI [10.1080/19475721.2010.483337](https://doi.org/10.1080/19475721.2010.483337).
- Giere O. 2009.** *Meiobenthology: The Microscopic Motile Fauna of Aquatic Sediments*. Berlin Heidelberg: Springer-Verlag.
- Gilbert JA, Field D, Swift P, Newbold L, Oliver A, Smyth T, Somerfield PJ, Huse S, Joint I. 2009.** The seasonal structure of microbial communities in the Western English Channel. *Environmental Microbiology* **11**(12):3132–3139 DOI [10.1111/j.1462-2920.2009.02017.x](https://doi.org/10.1111/j.1462-2920.2009.02017.x).
- Goffredi SK, Orphan VJ. 2010.** Bacterial community shifts in taxa and diversity in response to localized organic loading in the deep sea. *Environmental Microbiology* **12**(2):344–363 DOI [10.1111/j.1462-2920.2009.02072.x](https://doi.org/10.1111/j.1462-2920.2009.02072.x).
- Hammer Ø, Harper DAT, Ryan PD. 2001.** PAST: paleontological statistics software package for education and data analysis. *Palaeontologia Electronica* **4**:1–9.
- Harris RP. 1972.** The distribution and ecology of the interstitial meiofauna of a sandy beach at Whitsand Bay, East Cornwall. *Journal of the Marine Biological Association of the United Kingdom* **52**(1):1–18 DOI [10.1017/S0025315400018531](https://doi.org/10.1017/S0025315400018531).

- Harrison BK, Myrbo A, Flood BE, Bailey JV. 2018.** Abrupt burial imparts persistent changes to the bacterial diversity of turbidite-associated sediment profiles. *Geobiology* **16**(2):190–202 DOI [10.1111/gbi.12271](https://doi.org/10.1111/gbi.12271).
- Hasemann C, Soltwedel T. 2011.** Small-scale heterogeneity in deep-sea nematode communities around biogenic structures. *PLOS ONE* **6**(12):e29152 DOI [10.1371/journal.pone.0029152](https://doi.org/10.1371/journal.pone.0029152).
- Heip C, Vincx M, Vranken G. 1985.** The ecology of marine nematodes. *Oceanography and Marine Biology* **23**:399–489.
- Huse SM, Welch DM, Morrison HG, Sogin ML. 2010.** Ironing out the wrinkles in the rare biosphere through improved OTU clustering. *Environmental Microbiology* **12**(7):1889–1898 DOI [10.1111/j.1462-2920.2010.02193.x](https://doi.org/10.1111/j.1462-2920.2010.02193.x).
- Ingels J, Billett DS, Van Gaever S, Vanreusel A. 2011.** An insight into the feeding ecology of deep-sea canyon nematodes—results from field observations and the first in-situ ¹³C feeding experiment in the Nazaré Canyon. *Journal of Experimental Marine Biology and Ecology* **396**(2):185–193 DOI [10.1016/j.jembe.2010.10.018](https://doi.org/10.1016/j.jembe.2010.10.018).
- Ingels J, Vanreusel A, Romano C, Coenjaerts J, Mar Flexas M, Zúñiga D, Martin D. 2013.** Spatial and temporal infaunal dynamics of the Blanes submarine canyon-slope system (NW Mediterranean); changes in nematode standing stocks, feeding types and gender-life stage ratios. *Progress in Oceanography* **118**:159–174 DOI [10.1016/j.pocean.2013.07.021](https://doi.org/10.1016/j.pocean.2013.07.021).
- Janssen PH, Liesack W. 1995.** Succinate decarboxylation by *Propionigenium maris* sp. nov., a new anaerobic bacterium from an estuarine sediment. *Archives of Microbiology* **164**(1):29–35 DOI [10.1007/s002030050232](https://doi.org/10.1007/s002030050232).
- Joint IR, Gee JM, Warwick RM. 1982.** Determination of fine-scale vertical distribution of microbes and meiofauna in an intertidal sediment. *Marine Biology* **72**(2):157–164 DOI [10.1007/bf00396916](https://doi.org/10.1007/bf00396916).
- Jorgensen SL, Hannisdal B, Lanzén A, Baumberger T, Flesland K, Fonseca R, Øvreås L, Steen IH, Thorseth IH, Pedersen RB, Schlieper C. 2012.** Correlating microbial community profiles with geochemical data in highly stratified sediments from the Arctic Mid-Ocean Ridge. *Proceedings of the National Academy of Sciences of the United States of America* **109**(42):E2846–E2855 DOI [10.1073/pnas.1207574109](https://doi.org/10.1073/pnas.1207574109).
- Kalenitchenko D, Le Bris N, Dadaglio L, Peru E, Besserer A, Galand P. 2017.** Bacteria alone establish the chemical basis of the wood-fall chemosynthetic ecosystem in the deep-sea. *The ISME Journal* **12**(2):367–379 DOI [10.1038/ismej.2017.163](https://doi.org/10.1038/ismej.2017.163).
- Kunin V, Engelbrektson A, Ochman H, Hugenholtz P. 2010.** Wrinkles in the rare biosphere: pyrosequencing errors can lead to artificial inflation of diversity estimates. *Environmental Microbiology* **12**(1):118–123 DOI [10.1111/j.1462-2920.2009.02051.x](https://doi.org/10.1111/j.1462-2920.2009.02051.x).
- Kunin V, Hugenholtz P. 2010.** PyroTagger: a fast, accurate pipeline for analysis of rRNA amplicon pyrosequence data. *The Open Journal* **1**:1–8.
- Levin LA, Sibuet M, Gooday AJ, Smith CR, Vanreusel A. 2010.** The roles of habitat heterogeneity in generating and maintaining biodiversity on continental margins: an introduction. *Marine Ecology* **31**(1):1–5 DOI [10.1111/j.1439-0485.2009.00358.x](https://doi.org/10.1111/j.1439-0485.2009.00358.x).
- Maurin LC, Himmel D, Mansot J-L, Gros O. 2010.** Raman microspectrometry as a powerful tool for a quick screening of thiotrophy: an application on mangrove swamp meiofauna of Guadeloupe (F.W.I.). *Marine Environmental Research* **69**(5):382–389 DOI [10.1016/j.marenvres.2010.02.001](https://doi.org/10.1016/j.marenvres.2010.02.001).
- Meyer-Reil L-A, Faubel A. 1980.** Uptake of organic matter by meiofauna organisms and interrelationships with bacteria. *Marine Ecology Progress Series* **3**:251–256 DOI [10.3354/meps003251](https://doi.org/10.3354/meps003251).

- Moens T, Vincx M. 1997.** Observations on the feeding ecology of estuarine nematodes. *Journal of the Marine Biological Association of the United Kingdom* 77(1):211 DOI 10.1017/S0025315400033889.
- Nascimento FJA, Näslund J, Elmgren R. 2012.** Meiofauna enhances organic matter mineralization in soft sediment ecosystems. *Limnology and Oceanography* 57(1):338–346 DOI 10.4319/lo.2012.57.1.0338.
- Näslund J, Nascimento FJ, Gunnarsson JS. 2010.** Meiofauna reduces bacterial mineralization of naphthalene in marine sediment. *ISME Journal* 4(11):1421–1430 DOI 10.1038/ismej.2010.63.
- Ott JA, Novak R, Schiemer F, Hentschel U, Nebelsick M, Polz M. 1991.** Tackling the sulfide gradient: a novel strategy involving marine nematodes and chemoautotrophic ectosymbionts. *Marine Ecology* 12(3):261–279 DOI 10.1111/j.1439-0485.1991.tb00258.x.
- Polymenakou PN, Lampadariou N, Mandalakis M, Tselepides A. 2009.** Phylogenetic diversity of sediment bacteria from the southern Cretan margin, Eastern Mediterranean Sea. *Systematic and Applied Microbiology* 32(1):17–26 DOI 10.1016/j.syapm.2008.09.006.
- Polz MF, Harbison C, Cavanaugh CM. 1999.** Diversity and heterogeneity of epibiotic bacterial communities on the marine nematode *Eubostrichus dianae*. *Applied and Environmental Microbiology* 65(9):4271–4275.
- Preisler A, De Beer D, Lichtschlag A, Lavik G, Boetius A, Jørgensen BB. 2007.** Biological and chemical sulfide oxidation in a *Beggiatoa* inhabited marine sediment. *ISME Journal* 1(4):341–353 DOI 10.1038/ismej.2007.50.
- Purkhold U. 2003.** 16S rRNA and amoA-based phylogeny of 12 novel betaproteobacterial ammonia-oxidizing isolates: extension of the dataset and proposal of a new lineage within the nitrosomonads. *International Journal of Systematic and Evolutionary Microbiology* 53(5):1485–1494 DOI 10.1099/ijs.0.02638-0.
- Pusceddu A, Mea M, Canals M, Heussner S, Durrieu De Madron X, Sanchez-Vidal A, Bianchelli S, Corinaldesi C, Dell’Anno A, Thomsen L, Danovaro R. 2012.** Deep-sea benthic ecosystem collapse and recovery after an intense Dense Shelf Water Cascading event. *Biogeosciences Discussions* 9(12):17855–17884 DOI 10.5194/bgd-9-17855-2012.
- Reshef DN, Reshef YA, Finucane HK, Grossman SR, McVean G, Turnbaugh PJ, Lander ES, Mitzenmacher M, Sabeti PC. 2011.** Detecting novel associations in large data sets. *Science* 334(6062):1518–1524 DOI 10.1126/science.1205438.
- Rosli N, Leduc D, Rowden AA, Clark MR, Probert PK, Berkenbusch K, Neira C. 2016.** Differences in meiofauna communities with sediment depth are greater than habitat effects on the New Zealand continental margin: implications for vulnerability to anthropogenic disturbance. *PeerJ* 4:e2154 DOI 10.7717/peerj.2154.
- Rzeznik-Orignac J, Kalenitchenko D, Mariette J, Bodiou J-Y, Le Bris N, Derelle E. 2017.** Comparison of meiofaunal diversity by combined morphological and molecular approaches in a shallow Mediterranean sediment. *Marine Biology* 164(3):40 DOI 10.1007/s00227-017-3074-4.
- Schiemer F, Novak R, Ott J. 1990.** Metabolic studies on thiobiotic free-living nematodes and their symbiotic microorganisms. *Marine Biology* 106(1):129–137 DOI 10.1007/BF02114683.
- Sevastou K, Lampadariou N, Polymenakou PN, Tselepides A. 2013.** Benthic communities in the deep Mediterranean Sea: exploring microbial and meiofaunal patterns in slope and basin ecosystems. *Biogeosciences* 10(7):4861–4878 DOI 10.5194/bg-10-4861-2013.
- Singh R, Ingole BS. 2016.** Structure and function of nematode communities across the Indian western continental margin and its oxygen minimum zone. *Biogeosciences* 13(1):191–209 DOI 10.5194/bg-13-191-2016.

- Smoot ME, Ono K, Ruschinski J, Wang P-L, Ideker T. 2011. Cytoscape 2.8: new features for data integration and network visualization. *Bioinformatics* 27(3):431–432 DOI 10.1093/bioinformatics/btq675.
- Soetaert K, Heip C. 1995. Nematode assemblages of deep-sea and shelf break sites in the North Atlantic and Mediterranean Sea. *Marine Ecology Progress Series* 125:171–183 DOI 10.3354/meps125171.
- Soetaert K, Vincx M, Wittoeck J, Tulkens M. 1995. Meiobenthic distribution and nematode community structure in five European estuaries. *Hydrobiologia* 311(1–3):185–206 DOI 10.1007/bf00008580.
- Steyaert M, Herman PMJ, Moens T, Widdows J, Vincx M. 2001. Tidal migration of nematodes on an estuarine tidal flat (the Molenplaat, Schelde Estuary, SW Netherlands). *Marine Ecology Progress Series* 224:299–304 DOI 10.3354/meps224299.
- Steyaert M, Moodley L, Nadong T, Moens T, Soetaert K, Vincx M. 2007. Responses of intertidal nematodes to short-term anoxic events. *Journal of Experimental Marine Biology and Ecology* 345(2):175–184 DOI 10.1016/j.jembe.2007.03.001.
- Steyaert M, Vanaverbeke J, Vanreusel A, Barranguet C, Lucas C, Vincx M. 2003. The importance of fine-scale, vertical profiles in characterising nematode community structure. *Estuarine, Coastal and Shelf Science* 58(2):353–366 DOI 10.1016/S0272-7714(03)00086-6.
- Stockdale A, Davison W, Zhang H. 2009. Micro-scale biogeochemical heterogeneity in sediments: a review of available technology and observed evidence. *Earth-Science Reviews* 92(1–2):81–97 DOI 10.1016/j.earscirev.2008.11.003.
- Tchesunov AV, Ingels J, Popova EV. 2012. Marine free-living nematodes associated with symbiotic bacteria in deep-sea canyons of north-east Atlantic Ocean. *Journal of the Marine Biological Association of the United Kingdom* 92(6):1257–1271 DOI 10.1017/S0025315411002116.
- Thurber AR. 2015. Diet-dependent incorporation of biomarkers: implications for food-web studies using stable isotope and fatty acid analyses with special application to chemosynthetic environments. *Marine Ecology* 36:1–17 DOI 10.1111/maec.12192.
- Vafeiadou A-M, Materatski P, Adão H, De Troch M, Moens T. 2014. Resource utilization and trophic position of nematodes and harpacticoid copepods in and adjacent to *Zostera noltii* beds. *Biogeosciences* 11(14):4001–4014 DOI 10.5194/bg-11-4001-2014.
- Vanhove S, Arntz W, Vincx M. 1999. Comparative study of the nematode communities on the southeastern Weddell Sea shelf and slope (Antarctica). *Marine Ecology Progress Series* 181:237–256 DOI 10.3354/meps181237.
- Vincx M, Bett BJ, Dinot A, Ferrero T, Gooday AJ, Lamshead PJD, Pfannkuche O, Soltwedel T, Vanreusel A. 1994. Meiobenthos of the deep Northeast Atlantic. *Advances in Marine Biology* 30:1–88 DOI 10.1016/s0065-2881(08)60061-9.
- Wang J, Li M, Chen J, Pan Y. 2011. A fast hierarchical clustering algorithm for functional modules discovery in protein interaction networks. *IEEE/ACM Transactions on Computational Biology and Bioinformatics* 8(3):607–620 DOI 10.1109/TCBB.2010.75.
- Winnepenninckx B, Backeljau T, De Wachter R. 1993. Extraction of high molecular weight DNA from molluscs. *Trends in Genetics* 9(12):407 DOI 10.1016/0168-9525(93)90102-n.
- Yücel M. 2013. Down the thermodynamic ladder: a comparative study of marine redox gradients across diverse sedimentary environments. *Estuarine, Coastal and Shelf Science* 131:83–92 DOI 10.1016/j.ecss.2013.07.013.