



**HAL**  
open science

## Scaling-up biodiversity-ecosystem functioning research

Andrew Gonzalez, Rachel M Germain, Diane Srivastava, Elise Filotas, Laura Dee, Dominique Gravel, Patrick L Thompson, Forest Isbell, Shaopeng Wang, Sonia K Efi, et al.

► **To cite this version:**

Andrew Gonzalez, Rachel M Germain, Diane Srivastava, Elise Filotas, Laura Dee, et al.. Scaling-up biodiversity-ecosystem functioning research. *Ecology Letters*, 2020, 23 (4), pp.757-776. 10.1111/ele.13456 . hal-02499455

**HAL Id: hal-02499455**

**<https://hal.science/hal-02499455>**

Submitted on 5 Mar 2020

**HAL** is a multi-disciplinary open access archive for the deposit and dissemination of scientific research documents, whether they are published or not. The documents may come from teaching and research institutions in France or abroad, or from public or private research centers.

L'archive ouverte pluridisciplinaire **HAL**, est destinée au dépôt et à la diffusion de documents scientifiques de niveau recherche, publiés ou non, émanant des établissements d'enseignement et de recherche français ou étrangers, des laboratoires publics ou privés.

## REVIEWS AND SYNTHESES

## Scaling-up biodiversity-ecosystem functioning research

Andrew Gonzalez,<sup>1\*</sup>  Rachel M. Germain,<sup>2</sup> Diane S. Srivastava,<sup>2</sup>  Elise Filotas,<sup>3</sup> Laura E. Dee,<sup>4</sup>  Dominique Gravel,<sup>5</sup> Patrick L. Thompson,<sup>2</sup>  Forest Isbell,<sup>6</sup>  Shaopeng Wang,<sup>7</sup>  Sonia Kéfi,<sup>8</sup>  Jose Montoya,<sup>9</sup>  Yuval R. Zelnik<sup>9</sup> and Michel Loreau<sup>9</sup>

The peer review history for this article is available at <https://publons.com/publon/10.1111/ele.13456>

### Abstract

A rich body of knowledge links biodiversity to ecosystem functioning (BEF), but it is primarily focused on small scales. We review the current theory and identify six expectations for scale dependence in the BEF relationship: (1) a nonlinear change in the slope of the BEF relationship with spatial scale; (2) a scale-dependent relationship between ecosystem stability and spatial extent; (3) coexistence within and among sites will result in a positive BEF relationship at larger scales; (4) temporal autocorrelation in environmental variability affects species turnover and thus the change in BEF slope with scale; (5) connectivity in metacommunities generates nonlinear BEF and stability relationships by affecting population synchrony at local and regional scales; (6) spatial scaling in food web structure and diversity will generate scale dependence in ecosystem functioning. We suggest directions for synthesis that combine approaches in metaecosystem and metacommunity ecology and integrate cross-scale feedbacks. Tests of this theory may combine remote sensing with a generation of networked experiments that assess effects at multiple scales. We also show how anthropogenic land cover change may alter the scaling of the BEF relationship. New research on the role of scale in BEF will guide policy linking the goals of managing biodiversity and ecosystems.

### Keywords

Beta diversity, biological diversity, ecosystem functioning, ecosystems, environmental heterogeneity, scale, turnover.

Ecology Letters (2020) 23: 757–776

## INTRODUCTION

Life has transformed the Earth, mediating fluxes of elements and energy from the smallest to the largest spatial scales (Schramski *et al.*, 2015; Le Quéré *et al.*, 2016). The diversity and distributions of plant, animal and microbial life reflect evolutionary and ecological processes constrained by broad-scale abiotic gradients of energy, resources and meteorological conditions on land (Hawkins *et al.* 2003; Kreft & Jetz 2007; Pappas *et al.* 2017) and in the oceans (Vallina *et al.* 2014; Woolley *et al.* 2016; Frainer *et al.* 2017; Tréguer *et al.* 2018). Even while the distribution of biodiversity reflects gradients of energy and limiting resources, it also contributes to how effectively those gradients are exploited to confer ecosystem functioning, such as variability in the rates of primary and secondary production (Baldocchi 2014; Niu *et al.* 2017; Pappas *et al.* 2017; Jia *et al.* 2018). Yet, understanding how feedbacks

between biodiversity and ecosystem functioning occur, and vary from local to biogeographic scales, is a major challenge (Enquist *et al.* 2003, 2007; Grace *et al.* 2007; Gross & Cardinale 2007; Violle *et al.* 2014; Guidi *et al.* 2016; Maestre *et al.* 2016; Tréguer *et al.* 2018; Bagousse-Pinguet *et al.* 2019), one that is urgent to resolve as biodiversity change occurs at multiple scales in response to climate warming, species introductions and habitat degradation (Reichstein *et al.* 2014; Snelgrove *et al.* 2014; Isbell *et al.* 2017; Chase *et al.* 2019).

Biodiversity-ecosystem functioning (BEF) has focused on isolating the causal pathways by which biodiversity change alters the magnitude and stability of ecosystem processes (Hooper *et al.* 2005; Cardinale *et al.* 2011). Theory has played a major role in establishing predictions and validating interpretations of data. An important example of this is the way BEF effects can arise from selection versus complementarity effects at local scales (Loreau *et al.* 2001; Tilman, 1997).

<sup>1</sup>Department of Biology, McGill University, 1205 Dr. Penfield Avenue, Montreal H3A 1B1, Canada

<sup>2</sup>Department of Zoology and Biodiversity Research Centre, University of British Columbia, Vancouver V6T 1Z4, Canada

<sup>3</sup>Center for Forest Research, Département Science et Technologie, Université du Québec, 5800 Saint-Denis, Tolu, Montreal H2S 3L5, Canada

<sup>4</sup>Department of Ecology and Evolutionary Biology, University of Colorado, Boulder, Colorado 80309, USA

<sup>5</sup>Département de biologie, Université de Sherbrooke, 2500 Boulevard de l'Université, Sherbrooke J1K 2R1, Canada

<sup>6</sup>Department of Ecology, Evolution, and Behavior, University of Minnesota, 1479 Gortner Avenue, St. Paul, MN, 55108, USA

<sup>7</sup>Institute of Ecology, College of Urban and Environmental Science, and Key Laboratory for Earth Surface Processes of the Ministry of Education, Peking University, 100871, Beijing, China

<sup>8</sup>ISEM, CNRS, Univ. Montpellier, IRD, EPHE, Montpellier, France

<sup>9</sup>Centre for Biodiversity Theory and Modelling, Theoretical and Experimental Ecology Station, CNRS, 2 route du CNRS, 09200 Moulis, France

\*Correspondence: Andrew Gonzalez, Department of Biology, McGill University, Gonzalez 1205 Doctor Penfield, Montreal QC, H3A 1B1, Canada; phone 1-514-398-6444; fax 1-514-398-5069. E-mail: [andrew.gonzalez@mcgill.ca](mailto:andrew.gonzalez@mcgill.ca)

Although much of the focus in this area over the last three decades has built upon theory for fine-scale and short time periods in ecological systems, there are theoretical expectations for how spatial and temporal niche complementarity vary in importance over time, and increase in importance at greater scales on land and in the oceans (Cermeño *et al.* 2016; Vallina *et al.* 2017).

Meta-analyses of hundreds of BEF experiments have shown consistent relationships between biodiversity and ecosystem functioning across different ecosystem types and functions (Balvanera *et al.* 2006; Cardinale *et al.* 2011; O'Connor *et al.* 2017). However, this body of work has emphasised a limited range of spatial and temporal scales; experimental plots cover an area of *c.* 1–100 m<sup>2</sup> and have lasted *c.* 1–10 generations (see Fig. 1, see also Cardinale *et al.*, 2009). This means that while these studies can test the underlying mechanisms of BEF and short-term predictions of the theory, they cannot also directly address theoretical predictions that extend BEF relationships to broader scales (Loreau *et al.* 2003; Isbell *et al.* 2017, 2018; Thompson *et al.* 2018). A new generation of studies is starting to provide a deeper understanding of BEF at larger scales, in more realistic settings, across ecosystem types and gradients of climate (Duffy *et al.* 2007, 2017; Fung *et al.* 2015; Barnes *et al.* 2016; Liang *et al.* 2016; Oehri *et al.* 2017; Ratcliffe *et al.* 2017; Winfree *et al.* 2018; Bagousse-Pinguet *et al.* 2019; DeLong & Gibert 2019; Lefcheck *et al.* 2019), but a systematic assessment of theoretical predictions to bolster the interpretation of this new generation of empirical studies is lacking.

We are left, therefore, with one of the challenges associated with BEF research still unresolved: to what extent does the strength of the relationship linking change in biodiversity to change in ecosystem functioning depend on scale (Bengtsson *et al.* 2002; Naeem 2006)? How can existing theories be used to scale-up our understanding of the BEF relationship obtained at small spatial scales (Loreau *et al.* 2003; Cardinale *et al.* 2004; Burley *et al.* 2016; Yasuhara *et al.* 2016; Isbell *et al.* 2018; Thompson *et al.* 2018)? These questions, which we label 'the question of scale for BEF' is the focus of this paper. Articulated differently, do the processes explaining predominantly positive BEF correlations at local scales extend to regional and global scales (Pacnik *et al.* 2008; Snelgrove *et al.* 2014; Vallina *et al.* 2014; Violle *et al.* 2014; Liang *et al.* 2016; Wang *et al.* 2017; Acevedo-Trejos *et al.* 2018; Delsol *et al.* 2018; García-Palacios *et al.* 2018) and decadal and centennial time scales, or do different processes dominate at different scales (Brose & Hillebrand 2016; Isbell *et al.* 2017)? Here we explore how existing and new theories can help to answer these questions and inform future experiments and observations across scales.

In this article, we review and synthesise disparate theories addressing how the BEF relationship varies with spatial, temporal and organisational scale (Fig. 1). Box 1 provides an overview of the aspects of scale most relevant to our discussion. We highlight expectations from the scaling theory that address the relationships between biodiversity, ecosystem functioning and stability, and process-based theories of BEF that formalise causal relationships. These theories involve different assumptions, and so provide complementary

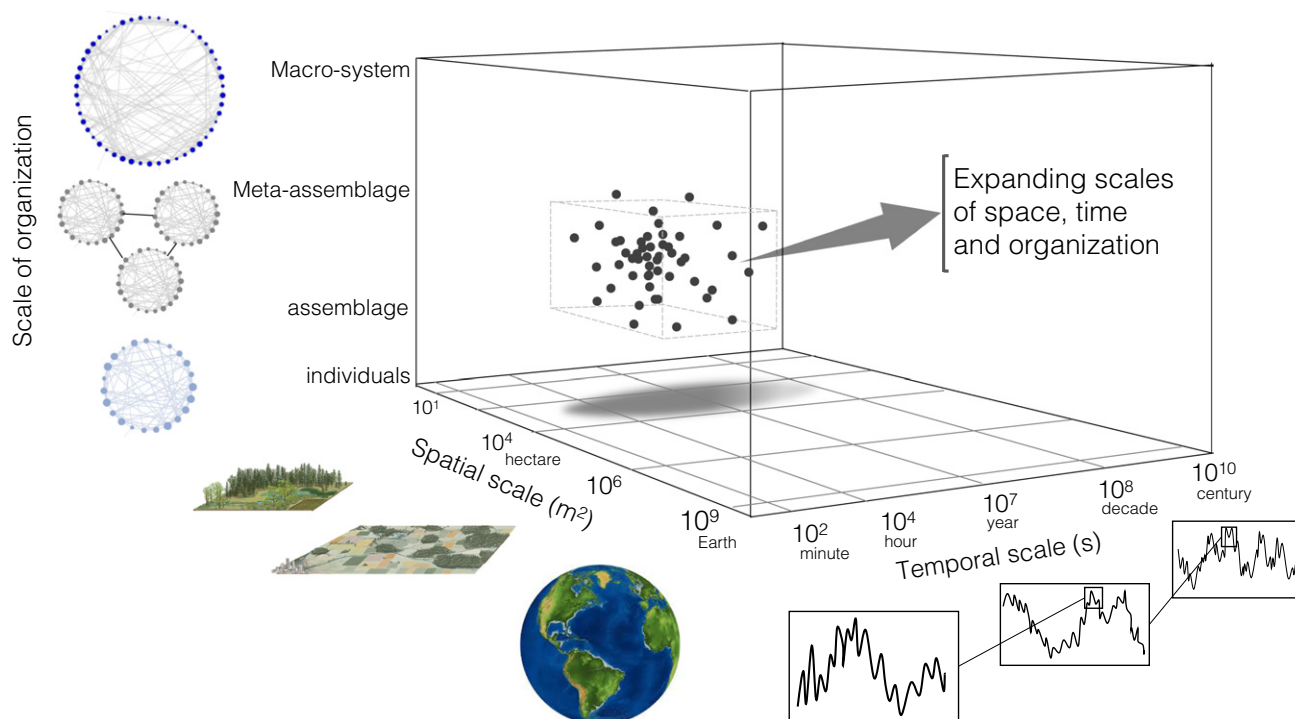
explanations for why biodiversity and ecosystem functioning should vary across scales. We assess the extent to which these theoretical predictions have been supported by empirical observations and experiments. Our review of the empirical literature is not exhaustive, but highlights the evidence addressing this theory. We do not restrict our review to particular measures of biodiversity or ecosystem functioning: the theory we review encompasses expectations for measures of richness and diversity of species (or functional groups) and their interactions across levels of organisation, and relates them to measures of functioning that include both ecosystems stocks (e.g. biomass) and processes. We provide several avenues for theoretical and empirical synthesis. From here, we discuss how humans may be altering biodiversity and ecosystem function at different scales and provide a detailed example for land-cover change. We close with recommendations for testing the theory with new datasets derived from molecular methods, networked experiments and remote sensing.

## EXPECTATIONS FROM THEORY SCALING BEF AND STABILITY

A first task is to assess how the biodiversity, ecosystem functioning and stability depend on scale without evoking the ecological processes that generate them. Scaling up patterns from fine-scale theory and evidence may not be possible for several reasons: these include the observation that area (or volume, in aquatic environments) influences the relative abundance of individuals and species, and the ways species diversity and biomass accumulate in space and the correlations in their biomass fluctuations in space and time. In this view, any variation in BEF relationships across scales could arise from the scale dependence in the distributions of individuals within and among species. Two such approaches to scale dependence (see Box 1 for definitions) have received attention: the first considers a decomposition of space into two scales—local and regional—and describes turnover in local assemblage biodiversity and ecosystem function as observations are aggregated from local sites into coarser grains. The second treats space as a continuum along a transect or expanding spatial extent (see Fig. 2; e.g. Barry *et al.* 2019). In the following subsections we summarise the key findings from each approach.

### Expectation 1: The slope of the BEF relationship is scale dependent

We consider whether the nonlinear BEF relationship commonly observed at small spatial grains changes as we aggregate observations to encompass larger grains (Figs 2 and 3). Specifically, as we aggregate small spatial units of area (grain) to form larger spatial units, we consider how estimates of the form (slope) and explanatory power (e.g.  $R^2$ ) of the BEF relationship change up to the largest spatial unit. A useful starting point here is to consider when the BEF relationship might remain the same at large scales as it is at small scales. Thompson *et al.* (2018), building on Cardinale *et al.* (2004), explored this question and found that the BEF relationship should remain constant with scale only if a proportional change in biodiversity results in the same proportional change in ecosystem functioning at all scales. This requires that three unlikely



**Figure 1** The three dimensions of scale in BEF research: time, space and organisation (see Box 1 for definitions). Most empirical studies in BEF (represented by black dots) fall within a constrained volume of this scale box: days to weeks in the case of micro- and mesocosm experiments, and years to two decades in the case of some grassland and forest diversity experiments. The size of most experimental plots is typically less than a hectare, although the spatial extent of the largest experiment was continental (BIODEPTH, Hector *et al.* 1999). Empirical studies could sample larger scales of variation by combining data from remote-sensing technologies, *in situ* probes and buoys, surveys using long transects and geographic networks of replicated experiments with controlled perturbations at different scales, deployed for multiple years and over broad spatial extents to capture shifting gradients of environmental heterogeneity. Images of landscape and forest plot from Encyclopedia Britannica 2013.

conditions are met: (1) local ( $\alpha$ ) species richness is constant across the entire region, (2) the local ( $\alpha$ ) scale slope of the BEF relationship is constant across the entire region, and 3) there is either complete overlap in composition across all local communities or no compositional overlap between local communities.

When conditions 1 and 2 are not met, scale dependence of the BEF slope arises from nonlinear averaging of spatially heterogeneous values of species richness (condition 1) or EF (condition 2). This, however, has a relatively modest effect on scaling of the BEF relationship compared to violation of condition 3, compositional turnover across space, where changes in mean  $\alpha$  richness do not result in the same proportional change in  $\gamma$  richness. Consequently, when fine-scale variation in the BEF relationship is aggregated, the change in BEF slope becomes nonlinear (Fig. 3A). One untested theoretical expectation is that similar patterns may arise when aggregation is done through time instead of space. This expectation arises because both the species-time relationship, and the species-time-area relationship, show temporal turnover in slopes that are very similar in form to the species-area relationship (Adler & Lauenroth 2003).

#### Empirical evidence

Most BEF experiments or surveys use a single small plot size, which can reveal large geographic plot-to-plot variation in the slope of BEF relationship (Liang *et al.*, 2016). However, a

growing number of studies have assessed how the slope of the BEF relationship changes when at least two spatial grains are examined (Roscher *et al.* 2005; Costanza *et al.* 2007; Chisholm *et al.* 2013; Sullivan *et al.* 2017; Sanaei *et al.* 2018; Luo *et al.* 2019). For example, Chisholm *et al.* (2013) studied the effect of tree species richness on forest biomass and productivity in 25 forest plots varying in areal extent from 8 to 50 ha. They systematically varied spatial grain (0.04–1 ha) and found that the relationship between tree species richness, above-ground biomass and coarse woody dry productivity changed qualitatively with grain. Species richness and niche complementarity effects were dominant predictors of ecosystem properties at small spatial grains, while environmental gradients explained variation at larger grains. At the smallest grain, 0.04 ha, doubling species richness corresponded to a 48% increase on average in productivity and a 53% increase in above-ground biomass. But at larger spatial grains (0.25 and 1 ha) the average BEF relationship was only weakly positive (doubling diversity led to a 5% and 7% increase in productivity and biomass respectively), and in fact negative relationships were more common. Biomass and productivity were positively correlated across spatial grains. Sullivan *et al.* (2017) also conducted a multiscale evaluation of diversity-carbon relationships in tropical forests across the tropics in three continents. Diversity-carbon relationships among all plots at 1 ha scale were absent, and within continents were either weak (Asia) or absent (Amazonia, Africa).

### Box 1. Features of scale necessary for multiscale BEF research

Time, space and ecological organisation are three important dimensions over which the BEF relationship varies (Fig. 1). Each dimension has three fundamental aspects of scale: (1) intrinsic process scales over which B and EF vary and covary, and (2) observation scale(s), defining how the system is partitioned (e.g. size of experimental unit) and sampled in space and time (Fig. 2), and (3) analytical scale defining the scales over which inferences are made (Dungan *et al.* 2002). The intrinsic scales are expressed in biologically relevant dimensions of space and time (i.e. generations or frequencies of a periodic ecosystem function in time or space); observation scales are characterised by their 'grain', the time or space resolution of individual samples and 'extent', the scale encompassing all observations. Analytic scales relate to how data are aggregated and transformed to optimise model fitting and inference.

Sampling governs which intrinsic scales are observed and how well they are sampled (Fig. 2). Under sampling can either mask or bias our estimate of the relationships between biodiversity and ecosystem function. In the absence of a strong *a priori* expectation for the scale(s) at which BEF interactions are strongest, multiscale sampling is required to capture ranges of variation in biodiversity and ecosystem function known to occur in the system; 3) the scale(s) of analysis and inference chosen to model BEF. This may involve a microscopic approach focusing on variation among individuals and their metabolic activities, a mesoscopic approach that examines how patchiness in biodiversity and ecosystem functioning determines the BEF relationship, or alternatively, a macroscopic approach whereby measures of diversity (e.g. entropy, functional trait distributions) are used to summarise variation across many assemblages and used to predict ecosystem function, such as NPP or carbon fluxes at landscape or biogeographic scales.

**Temporal scale:** temporal dimensions of observation, where the duration of a single measurement sets its resolution (seconds, days), the frequency defines the time elapsed between measurements (e.g. annual) and the interval between the first and last measurement sets the temporal extent. In general, a signal can only be reconstructed from its samples if it is sampled at least twice as fast as its highest frequency component. The intrinsic time scales of biodiversity include the rates of temporal species turnover arising from colonisation and extinction, and the fluctuations (e.g. variance, extremes) in ecosystem function (energy flux, or biomass production), that may have a strong seasonal (e.g. annual) and meso- and macroclimatic periodicities (e.g. ENSO or El Niño), and a multiscale random component (i.e., environmental noise) with autocorrelation.

**Spatial scale:** the spatial dimensions of the study, the extent and grain of the study area (e.g. plot size) and sampling effort (e.g. spatial coverage). Again, we also include the intrinsic scales of diversity turnover in space and distance decay in similarity. The latter leads naturally to the notion of effective community diversity, and  $\beta$ -diversity that links local ( $\alpha$ ) diversity at the grain studied, to regional ( $\gamma$ ) diversity at the maximum extent studied.

**Organisational scale:** measures of non-randomness in biodiversity (taxonomic, functional or phylogenetic diversity and their effective numbers), and relational measures of organisation characterising species' associations and interactions (e.g. food web, or mutualist networks) that scale in space and time. These include trophic complementarity and the vertical/horizontal diversity of food webs. We also mean spatial network organisation, where dispersal and fluxes of resources can link patches to create dynamically coupled assemblages of species (e.g. metacommunities). These organisational scales align when the complexity of interaction networks has strong spatial and temporal dimensions.

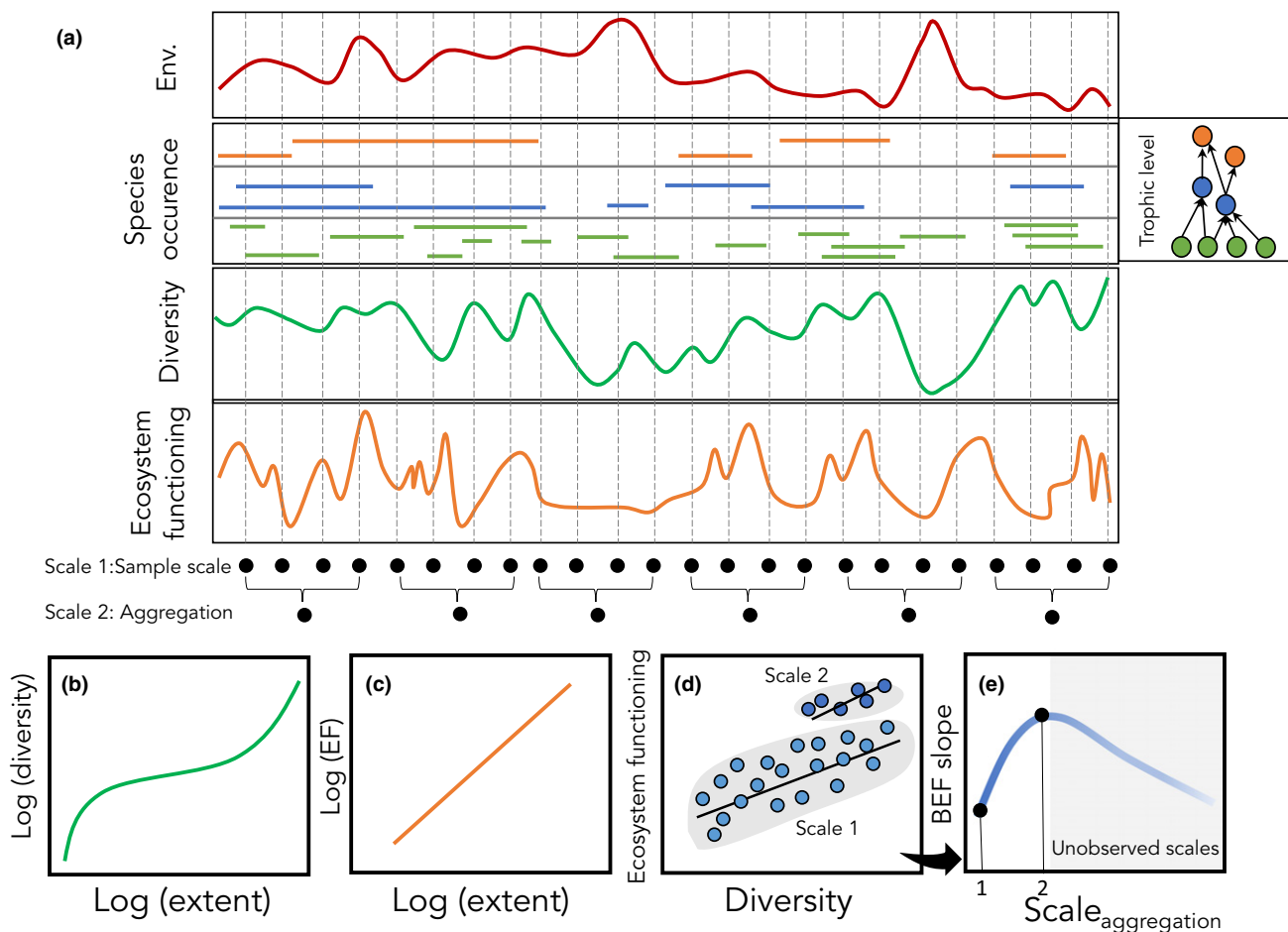
Our review of theory shows that BEF research must vary the range of observation scales if it is to capture the range of intrinsic process scales and make strong statistical inferences about scale dependence. The multiscale nature of BEF relationships suggest that where possible we must contrast or manipulate aspects of intrinsic scale (e.g. climate variation, nutrient pulses) to reveal the strength of scale dependence in experimental and natural ecosystems.

Testing theoretical expectations for BEF with empirical studies is challenging because of the covariance with other factors, such as climate or productivity, that can mask changes in the BEF relationship (Loreau 1998). This is especially true when accounting for variation in the BEF slope at increasingly larger scales. For example, Costanza *et al.* (2007) found that the correlation between vascular plant richness and net primary production (NPP) at two scales – site and ecoregion – in North America depends on climate. At the site scale, 57% of the variance in NPP was correlated with variation in richness after accounting for the effects of climate. In contrast, at the ecoregion scale, the BEF relationship was found to change sign over three ranges of temperature (negative at low temperatures ( $-2^{\circ}\text{C}$  average), no correlation at mid-temperatures ( $5^{\circ}\text{C}$  average) and positive at high temperatures ( $13^{\circ}\text{C}$  average). Without species composition data it is difficult

to assess whether this result occurred via condition 3 identified by Thompson *et al.* (2018).

### Expectation 2: Stability of function scales nonlinearly with area

Observed BEF relationships may vary with scale if the stability of this relationship varies, even while the underlying BEF relationship does not vary. One way to quantify stability is as invariability – that is, low temporal variation in population or community biomass. Invariability, like many other properties of ecosystems (most notably, species richness), increases with area (spatial extent). The key expectation from work on the invariability-area relationship (IAR) is that aggregate biomass and its variability scale nonlinearly with area (Wang *et al.*, 2017). Wang *et al.* (2017) found that, like the species-area relationship (SAR), the IAR can have a triphasic form



**Figure 2** The scale of observation directly affects biodiversity and ecosystem functioning but also affects the relationship between them. In panel (a) assemblages are sampled across a spatial or temporal gradient in the environment (Env), species occurrence by trophic level (with corresponding food web shown, right), diversity measured here as richness (sum of species occurring at each location) and variation in ecosystem functioning (e.g. productivity, or total community flux) arising from variable and asynchronous variation among species. These samples (scale 1) can be aggregated over space or time (scale 2). Diversity and ecosystem function each show characteristic scaling relationships with increasing spatial or temporal extent (b and c respectively), and the difference in these scaling relationships contributes to scale dependence in the BEF relationship (d) which can be projected as a BEF slope by scale plot (e). With just two scales in this example, we have only incomplete sampling of the potentially nonlinear BEF slope by scale relationship (black dots on the blue line in (e)).

(Fig. 3B), the shape of which is related to the SAR (Delsol *et al.* 2018).

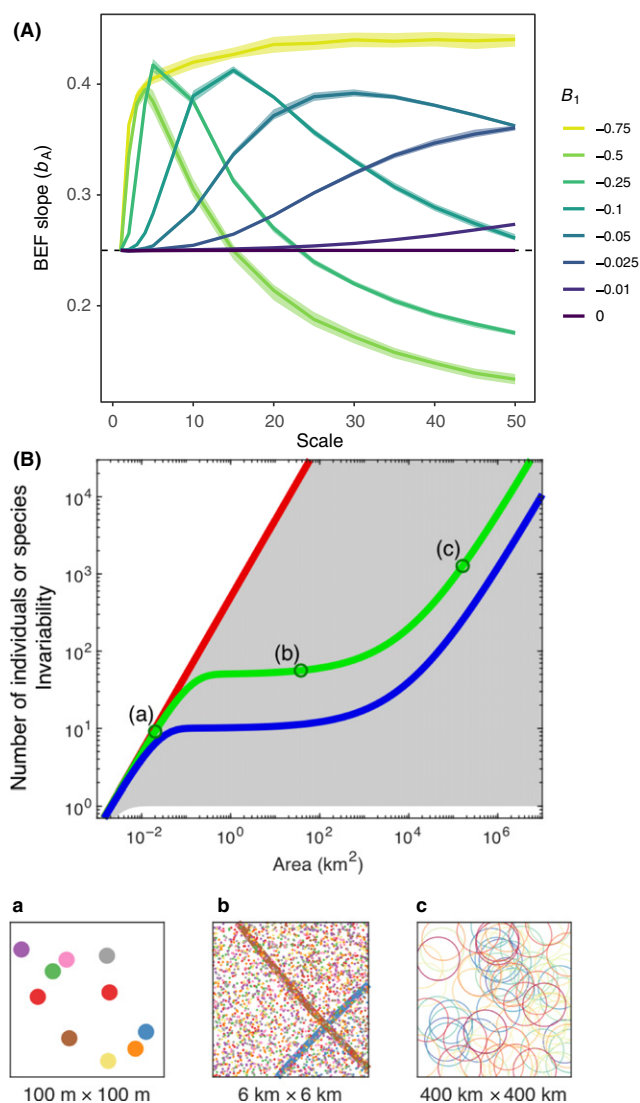
The key finding from work on the IAR is that the scaling of ecosystem stability with area is governed by the spatial asynchrony in species' biomass fluctuations. Asynchrony in biomass fluctuations, together with the spatial distribution of individuals and species (sub panels in Fig 3B), determine the shape of IARs (Fig. 3B main plot). These two facets of the IAR describe how quickly spatial averaging of temporal variability occurs with increasing area. In the limiting case where the biomass of individuals fluctuates synchronously within species, but independently among species, the IAR coincides exactly with the SAR because species' identity governs the changes in both the number of species and invariability. In other theoretical scenarios, where the synchrony in biomass fluctuations within species are assumed to decay with distance, IARs become disconnected from SAR (Delsol *et al.* 2018).

Although work on the IAR has focused on temporal variation of biomass production so far, we also expect spatial

invariability to show a positive IAR. Increased invariability with grain size should ultimately result from the fact that the mean level of EF per area stays constant while its standard deviation is expected to decrease (Chave *et al.* 2004). Asynchronously fluctuating variables compensate for each other at larger scales (Loreau 2010), and this should hold in both space and time.

#### Empirical evidence

Two large-scale datasets have been examined for triphasic IARs (Wang *et al.* 2017). Global primary productivity (MODIS data) across five continents exhibits triphasic curves, characterised by steeper increases in invariability at both small and large scales as predicted (Wang *et al.* 2017). However, this observation was not found in the North American breeding bird survey, possibly because the bird survey is a partial assessment at a subcontinental extent. More datasets are needed to assess whether the IAR is consistently triphasic. An analysis of IAR across trophic levels could be achieved with



**Figure 3** Scale dependence in BEF relationships. (A) Expectations from theory on scaling of biodiversity and ecosystem functioning via aggregation across sites (redrawn after Thompson *et al.* 2018). The strength of biodiversity effects,  $b_A$ , as measured by the slope of the BEF relationship at different spatial scales when there is incomplete compositional turnover across local patches (see main text). Different degrees of compositional turnover are indicated by the different coloured lines (low values of  $B_1$  correspond to low turnover;  $B_1 = 0$  indicates complete turnover). (B) Expectations from theory on scaling of biodiversity and ecosystem functioning with area (redrawn after Delsol *et al.* 2018). The green line shows the expected SAR (species-area relationship), and a similar blue curve for the IAR (invariance-area relationship). The grey area shows the set of possible SARs and IARs for a fixed configuration of individuals. Its upper boundary (red) coincides with the expected proportional relationship between the number of individuals and area. For SARs, this boundary corresponds to the limiting case where each individual belongs to a different species, yielding a linear SAR. For IARs, it corresponds to the limiting case where all individuals have independent productivity fluctuations, yielding a linear IAR. Productivity is expected to scale proportionally to the number of individuals, and thus to follow the same linear relationship. Bottom panels a, b and c show the distributions of individuals (a and b) and species ranges (b and c) at three spatial scales. Individuals and ranges of different species are indicated by different colours.

the bird survey or marine food web data (e.g. McGinty *et al.* 2012).

#### FOUR PROCESS-BASED EXPECTATIONS FOR SCALE DEPENDENCE IN BEF IN SPACE AND TIME

So far, we have described general expectations from the theory that emphasises the statistical properties of diversity, fluctuations and function across scale, without considering scale-dependent ecological processes. These include theories for how species interactions, temporal and spatial environmental variability and metacommunity processes affect BEF at different scales. A review of the literature revealed a number of relevant ecological processes, which we summarise in Table 1. We now address four of these expectations in greater depth and discuss empirical studies providing support for them.

#### Expectation 3: Coexistence within and among sites will result in a positive BEF relationship at larger scales

A general expectation from coexistence theory is that larger scales of space and time encompass a greater range of environments, increasing species' opportunities for niche partitioning and therefore BEF relationships that extend to larger scales. Early work used resource competition theory to articulate when species complementarity due to niche differentiation will explain overyielding in plant communities at small scales (Tilman *et al.* 1997). However, coexistence mechanisms are inherently scale dependent (Hart *et al.* 2017). If we assume that species differ in average fitness in different environments and that no species can exist in all environments, environmental heterogeneity is expected to promote ecosystem functioning across space via spatial niche complementarity (Williams *et al.* 2017) and through time via temporal and spatio-temporal niche complementarity (Chesson *et al.* 2001; Gross & Cardinale 2007). Even in the absence of coexistence at local scales, spatial variation in species dominance (e.g. Winfree *et al.*, 2018) can result in niche complementarity at large spatial scales, and therefore generate a positive BEF relationship at those scales. The fact that biodiversity can underpin ecosystem functioning via complementarity within and among environments means that BEF effects are likely important at large scales.

Although biodiversity might increase ecosystem functions in each of a given set of environments (Tilman *et al.* 2012), its effects are ultimately constrained by limiting resources and physiological constraints that those environments impose (Harpole & Tilman 2007). If considered relative to fluctuating environmental conditions, the effect of biodiversity on some ecosystem functions, such as primary production, might be weak and difficult to isolate. However, larger spatial scales encompass a greater range of microgeographic heterogeneity (e.g. soil depth), habitat types (e.g. grassland vs. forest) and climates (Bell & Lechowicz 1991). Thus, if considered relative to an increase in biodiversity at small scales, the greater range of environments encompassed at larger scales adds more opportunity for niche partitioning (Ritchie & Olff 1999; Leibold & Chase 2018) which should strengthen BEF relationships.

**Table 1** Expected effects of (a) spatial, (b) temporal and (c) organisational scale on BEF relationships derived from the theoretical and empirical studies we reviewed. The effects discussed in the main text are in boldface

(a)	Magnitude of function	Stability of function	Spatial scale at which process applies
Process change as we increase spatial scale			
<b>Statistical properties of aggregation</b>	BEF slope increases as spatial grain becomes coarser due to nonlinear averaging of different finer-grain BEF relationships, as well as spatial variation in fine-grain diversity (Thompson <i>et al.</i> 2018), coupled with evidence for spatial variation in fine-grain BEF slope (Liang <i>et al.</i> 2016; Sullivan <i>et al.</i> 2017)	Observation error associated with sampling biodiversity distributions can be a component of biodiversity-stability relationships and will increase with spatial scale (due to increased environmental heterogeneity and patterns of rarity) and decrease with sample size due to averaging over multiple observations (Mazancourt <i>et al.</i> 2013). Habitat selection by mobile organisms can alter effects of diversity on stability of functions (France & Duffy 2006)	Patch to continental
<b>Spatial turnover in species composition increases, due to drift, dispersal limitation or species sorting</b>	As spatial grain increases, BEF relationship steepens when new species are encountered across space, and erodes when all species have already been encountered (Thompson <i>et al.</i> 2018). Landscapes require more species to maintain functioning than sites because functionally important species differ between sites (Winfree <i>et al.</i> 2018; Lefcheck <i>et al.</i> 2019)		Patch to landscapes to regions
<b>Heterogeneity and range of environmental conditions increases</b>	BEF strengthens because of increased expression of niche complementarity (Dimitrakopoulos & Schmid 2004; Tylianakis <i>et al.</i> 2008). Direct effects of environment on ecosystem functions reduce relative importance of biodiversity (e.g. Srivastava & Vellend 2005)	Insurance hypothesis, both local and spatial, can be explained via temporal and spatial niche complementarity. Both predict stabilising effects of increasing diversity, and these benefits become more apparent with increasing spatial and temporal scales	Micro-habitat to patch to landscape to region
<b>Dispersal influences local dynamics</b>	In combination with a spatially and temporally heterogeneous environment, moderate dispersal can permit species to efficiently track spatial change in their optimal environment, increasing function (Loreau <i>et al.</i> 2003; Thompson <i>et al.</i> 2017)	Movement from patch-to-patch by mobile consumers can either stabilise (Loreau <i>et al.</i> 2003) or destabilise ecosystem function (Marleau <i>et al.</i> 2014)	Patch to region
<b>Potential for spatial asynchrony in local population dynamics</b>	Increasing asynchrony predicts an increase in average EF	In combination with a spatially and temporally heterogeneous environment, asynchrony in population dynamics at the local level results in stabilisation at larger spatial scales (Loreau <i>et al.</i> 2003; Wang & Loreau 2016)	Patch to region
Spatial coupling of functions between habitats	As spatial scale increases, ecosystem functions include energy and matter flow between habitats. Thus, BEF effects in one habitat may support ecosystem functions in a connected habitat (Alsterberg <i>et al.</i> 2017).		Single habitat/ecosystems to multiple habitats/ecosystems
Allow feedbacks from EF → B	Ecosystem functions enabled by one group of species provide opportunities for other species through niche construction, processing chains and autocatalytic cycles, food webs, facilitation networks and cross-ecosystem fluxes (Worm & Duffy 2003)	Temporal variance in ecosystem functions affects the persistence of species; intermediate levels of variability often promote diversity (e.g. creating temporal niches, disrupting competitive hierarchies) (Worm & Duffy 2003)	Patch to landscape

(continued)



Table 1 (continued)

Processes change as we increase temporal scale	Magnitude of function	Stability of function	Temporal scale
(b) Statistical properties of aggregation	BEF slope changes with successional stage (Reich <i>et al.</i> 2012; Lasky <i>et al.</i> 2014; Guerrero-Ramirez <i>et al.</i> 2017), and aggregation of variable BEF slope is subject to nonlinear averaging (a temporal analogue to Thompson <i>et al.</i> 2018)		One to many generations
Increased cycling of limiting nutrients	Diverse communities are able to accumulate limiting nutrients within ecosystem components, fuelling further growth (Reich <i>et al.</i> 2012)		One to many generations
Increases in time since species addition/deletion allows for species interactions to be realised	In assembling communities, BEF relationships strengthen due to increasing strength of complementarity (Cardinale <i>et al.</i> 2007). Other species compensate for lost species through vegetative growth or colonisation, reducing influence of biodiversity on function (Kardol <i>et al.</i> 2018)	Ability to detect temporal complementarity in population dynamics, a main mechanism underlying diversity-functional stability relationships, increases with observation time (Loreau & Mazancourt 2013)	One to many generations
<b>Increased range of environmental conditions as time span increases ('reddened environmental noise')</b>	Dee <i>et al.</i> (2016) found evidence for a performance effect of functional diversity, by buffering fisheries yields against within-year temperature variability.	Diversity can stabilise functions in the face of the destabilising effects of reddened environmental noise (Gonzalez & De Feo 2007)	Years to decades
(c) Processes change as we increase organisational scale			
Include multiple genotypes of a species	Magnitude of function	Stability of function	Organisational scale
<b>Include multiple populations of a species</b>	Increased rates of ecosystem functions, due to niche complementarity between genotypes (Schweitzer <i>et al.</i> 2005; Hughes <i>et al.</i> 2008)	Increased functional resistance to disturbance (Hughes & Stachowicz 2004)	From individuals to population
<b>Include multiple trophic levels of a food web</b>	Higher trophic levels can change BEF effects at lower levels, e.g. by altering the relative abundances and interaction strengths of lower-level species or directly influencing function (Worm & Duffy 2003)	Variability in function is reduced when populations have independent or negatively covarying dynamics (portfolio effect; Schindler <i>et al.</i> 2010) Higher trophic levels can alter the relationship between diversity and ecosystem stability, depending on the strength of the trophic interactions (Thébault & Loreau 2005; Jiang <i>et al.</i> 2009)	Single population to metapopulation Single to multiple trophic levels
<b>Include multiple communities of a metacommunity</b>	See all 'patch to landscape' or 'patch to region' entries in spatial scale table Habitat diversity can have strong impacts on ecosystem functioning when habitats complement each other in the types of energy and elemental processing (Alsterberg <i>et al.</i> 2017)	See all 'patch to landscape' or 'patch to region' entries in spatial scale table	Single community to metacommunities Single habitat/ecosystems to multiple habitats/ecosystems

### Empirical evidence

Experiments that directly manipulate coexistence via environmental heterogeneity and examine effects on BEF relationships at different scales are scarce (Langenheder *et al.* 2010; Gravel *et al.* 2011). Gravel *et al.* (2011) evolved assemblages of generalist and specialist marine bacteria and assessed their ability to metabolise a range of carbon substrates. They found that assemblages of generalists were more productive on average because of their superior ability to exploit the imposed heterogeneity in the resource environment. However, the slope of the BEF relationship was stronger for the assemblages of specialists because of enhanced niche complementarity. A number of experiments have manipulated habitat heterogeneity and examined effects on BEF relationships (Tylianakis *et al.* 2008). Experiments with naturally occurring species pools demonstrate a strengthening of the effect of biodiversity on ecosystem function with habitat heterogeneity, for example, the effect of algal diversity on stream water quality strengthens with substrate complexity (Cardinale 2011). Similarly, in the rocky intertidal, algal grazer species differentially feed in the presence and absence of barnacles, leading to increased spatial complementarity of algal consumption when barnacles are patchily distributed (Whalen *et al.* 2016).

#### Expectation 4: Autocorrelation in the environment will slow the rate of saturation in BEF relationship

Environmental variability on land and in the oceans is characterised by its autocorrelation (Steele 1985). Autocorrelation (i.e. the slow decay in environmental similarity in time or space) influences many ecological properties (Vasseur & Yodzis 2004), including rates of species turnover ( $\beta$  diversity) and productivity (Storch *et al.* 2007). As we saw in section 2, species turnover is a key factor governing scale dependence in the strength of the BEF relationship. A follow-on expectation is that the degree of scale dependence in BEF is mediated by environmental autocorrelation. If species replace each other over time and space in response to environmental fluctuations, then autocorrelation sets the rate of species turnover, which in turn sets the scale over which the BEF relationship saturates.

This prediction that environmental autocorrelation sets the scale over which the BEF relationship saturates can be evaluated using simulations of species competing for resources exposed to stochastic environmental fluctuations. Gonzalez & De Feo (2007) tested this prediction and found that the magnitude and stability of functioning in competitive communities depend strongly upon the degree of temporal environmental autocorrelation (Fig. 4). In the absence of temporal autocorrelation (white noise), community dynamics were characterised by high frequency, small-amplitude population fluctuations, and biomass was evenly distributed across species over all time scales (Fig. 4a). With increasing autocorrelation (Fig. 4b and 4), the environment changed state more slowly, driving population dynamics with periods of alternating dominance and low evenness over short time scales. Increasing species richness increased biomass production (Fig. 4d) and stability (Fig. 4e) in all environment types, but – as predicted above –

the effect of diversity was most important under autocorrelated conditions (Gonzalez & De Feo 2007).

A second finding of Gonzalez & De Feo's (2007) model is that the scale of environmental autocorrelation will determine how many species are needed to reach a given level of EF. The slow turnover in diversity in autocorrelated environments should result in a slower saturation of the BEF slope compared to uncorrelated environments, where the full range of environmental variance is experienced over short intervals of space and time. Because of the near ubiquity of autocorrelated environmental conditions across scales (Steele 1985; Bell *et al.* 1993; Vasseur & Yodzis 2004), we expect it to be a strong determinant of scale dependence in BEF processes.

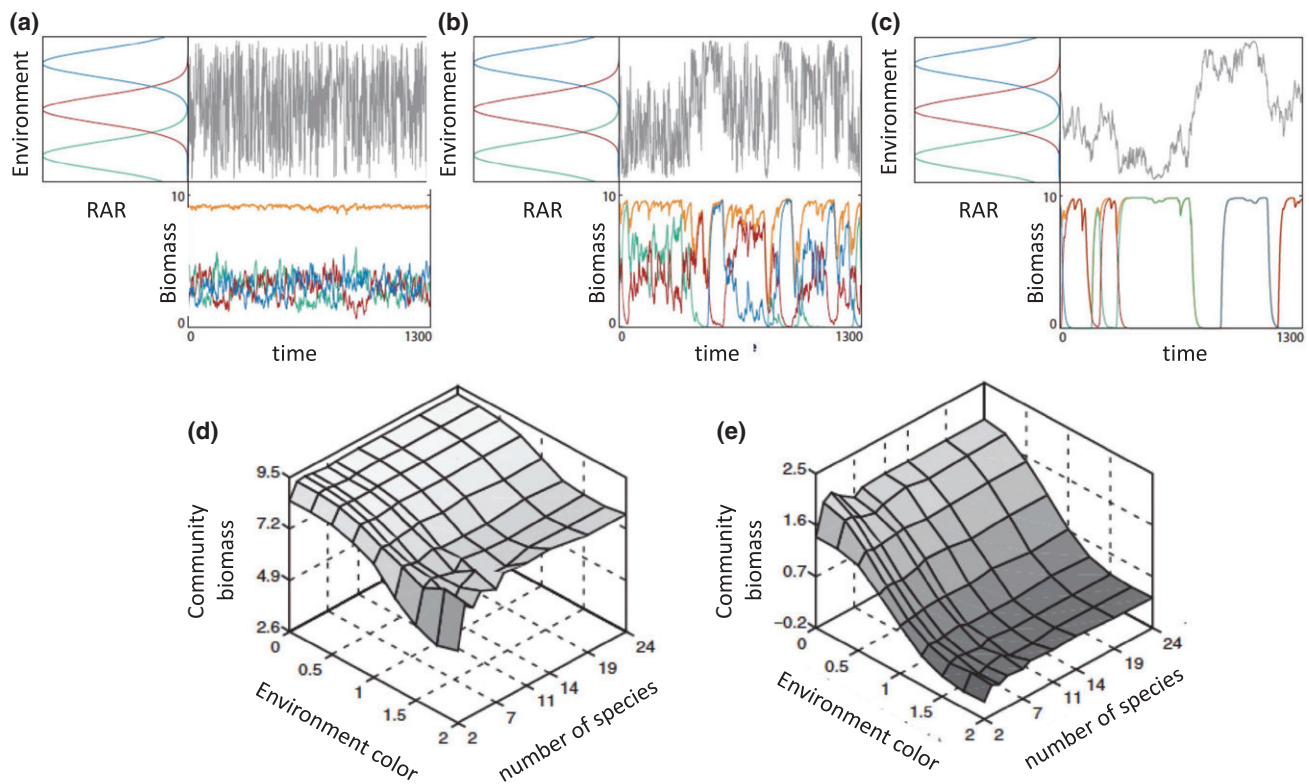
### Empirical evidence

Very little empirical evidence exists for spatial or temporal autocorrelation as a determinant of scale dependence in BEF. Using plankton microcosms, Descamps-Julien and Gonzalez (2004) showed that autocorrelated fluctuations in temperature had a greater stabilising effect on community algal biomass than uncorrelated fluctuations. This occurred because autocorrelated temperature variation allowed different species to more easily track the changing temperatures and these differential species' responses resulted in a lower covariance in total community biomass. This theory could be further tested by analyses of variation in freshwater and marine plankton diversity where spatial data and time series of primary production and physical environmental parameters mediating diversity are available, and could be used to estimate the variance spectra of these processes (Lévy 2008; Lévy Marina *et al.* 2015; Smith *et al.* 2016; Soininen *et al.* 2016; Tréguer *et al.* 2018).

#### Expectation 5: Connectivity has nonlinear effects on the strength and stability of BEF across scales

Spatial models predict BEF effects at multiple scales because of the transfer of organisms and resources among ecosystems (Peterson *et al.* 1998; Peters *et al.* 2007). Metacommunity and metaecosystem theories show that the direction and rates of dispersal govern local and regional biodiversity, and the rate and stability of biomass production and resource use (Loreau *et al.*, 2003; Marleau *et al.*, 2014; Thompson & Gonzalez, 2016; Leibold *et al.*, 2017; Thompson *et al.*, 2017). The movement of individuals and resources in these models causally links BEF across scales but is rarely studied in BEF experiments.

The spatial insurance hypothesis (SIH; Loreau *et al.*, 2003; Shanafelt *et al.*, 2015; Thompson & Gonzalez, 2016) states that dispersal links coexistence to the magnitude and stability of single and multiple ecosystem functions. The key prediction of the SIH is that changing connectivity (e.g. dispersal rate) leads to a nonlinear (e.g. unimodal) effect on functioning and stability. At very low connectivity species cannot move from patch-to-patch to effectively track their environmental optima, and so diversity is lost (i.e. due to local competitive exclusion). Intermediate rates of movement promote species persistence because they can track shifting environmental conditions. This spatial sorting of species results in turnover in species dominance which enhances biomass production



**Figure 4** Temporal environmental autocorrelation alters the scale dependence in species fluctuations, mean EF (orange line) and stability (redrawn after Gonzalez and DeFeo 2007). The top panels (a–c) show increasing autocorrelation in the environmental fluctuations (shown in grey) from left to right. RAR = Resource Assimilation Rate: (a) white noise, with no autocorrelation, (b)  $1/f$  noise, or pink noise, where the power spectral density of the environmental fluctuations is inversely proportional to the frequencies  $f$  composing the signal. (c)  $1/f^2$  environmental fluctuations (red noise). The population dynamics for 3-species resource competition showing different levels of population compensation and asynchrony over time. The species have distinct, but overlapping, environmental niches (left-hand side of each of the top panels) which are shown as coloured Gaussian curves. The mean ecosystem function (orange) and species' fluctuations are dominated by low frequency fluctuations as the environment becomes more autocorrelated (a–c). Panels (d) and (e) respectively, show how mean community biomass and community stability change as a function of species richness (2–24 species) and the degree of autocorrelation characterised by the slope of the exponent (eight levels 0–2).

when the environment is fluctuating locally and regionally (Thompson *et al.*, 2017). Intermediate rates of movement also maintain local diversity by mass effects. In many cases, although this is not universal (Haegeman & Loreau 2014), at very high rates of dispersal a few species come to dominate the region because of competitive exclusion by species that have the greatest fitness for average conditions across all patches. Intermediate rates of dispersal therefore strongly stabilise productivity and resource use because of asynchronous species fluctuations.

The spatial insurance hypothesis generalises the local temporal insurance that occurs within patches (Yachi & Loreau 1999). The insurance results from differences among species in their responses to fluctuating environmental conditions (Elmqvist *et al.* 2003). Both temporal and spatial insurance provide stabilising effects to regional ecosystems and reflect the effects of  $\alpha$  (local) and  $\beta$  (among community) diversity on ecosystem properties. Specifically, while  $\alpha$  diversity decreases local ecosystem variability,  $\beta$  diversity generally contributes to increasing spatial asynchrony among local ecosystems, as shown by Wang & Loreau (2016) using Lotka–Volterra multi-patch metacommunity models. In an important link to

expectation 1 and 4, such metacommunity models simultaneously show that, at the regional scale, the stabilising effect of  $\beta$  diversity increases as spatial environmental autocorrelation increases (Wang & Loreau 2016).

#### Empirical evidence

Several studies have experimentally controlled connectivity and shown that it affects diversity, EF and stability (France & Duffy 2006; Staddon *et al.* 2010; Haddad *et al.* 2015; Thompson *et al.* 2015; Guelzow *et al.* 2017; Limberger *et al.* 2019). One BEF experiment that explicitly assessed scale while controlling dispersal in a metacommunity. Venail *et al.* (2010) assembled a metacommunity composed of a number of genotypes of the bacterium *Pseudomonas fluorescens* to examine BEF relationships under varying dispersal rates in a spatially heterogeneous landscape. A BEF relationship was only observed at the regional scale—the scale at which resource heterogeneity allowed spatial complementarity. Spatial complementarity peaked at intermediate dispersal rates, the rate that allowed species to access and persist in all suitable local environments. At local scales, a single carbon source precluded niche differentiation so BEF relationships did not

emerge. Dispersal increased diversity through mass effects, but not productivity, because local resource complementarity was not possible. Experiments beyond the lab are needed and could be done in grasslands where dispersal can be quantified and spatial plot configuration controlled to reveal the effects on BEF (Germain *et al.* 2017). These results demonstrate how the scales at which BEF relationships emerge depend on the scales of interaction between ecological processes; in this case, dispersal, competition and environmental sorting.

#### **Expectation 6: Interaction network structure will influence scale dependence of EF in food webs**

So far, our discussion of the scaling of BEF relationships accounts for biodiversity change at a single trophic level, ignoring the additional complexity that emerges from network measures of diversity. Most theoretical and empirical investigations of BEF in food webs have focused on small spatial scales (Duffy 2003; Thébault & Loreau 2003; Loreau & Holt 2004), limiting our ability to assess how spatial scale affects ecosystem functioning in meta-networks (Barnes *et al.* 2016). However, progress has been made on three fronts: (1) interaction network diversity and dissimilarity in space and time (Brose *et al.* 2004; Poisot *et al.* 2013; Barnes *et al.* 2016; Schieber *et al.* 2017; Galiana *et al.* 2018), (2) causal relationships between food web structure, diversity and ecosystem functions (Poisot *et al.* 2013; Wang & Brose 2018), and (3) the ecosystem effects of trophic coupling by mobile consumers (McCann *et al.* 2005; Marleau & Guichard 2014).

There are several reasons why network diversity and structure vary with spatial scale. First, food chain length is expected to increase with habitat area or volume (Holt *et al.* 1999; Post *et al.* 2000), leading to different SARs at each trophic level (Holt *et al.* 1999; Ryberg & Chase 2007). Moreover, generalist species do better than specialist species on small and less connected areas because they are more likely to meet their energy requirements than specialist species. These outcomes lead to a network connectance-area relationship (Gravel *et al.* 2011). Pillai *et al.* (2011) also found that the complexity of food web topology, in particular the prevalence of omnivory and intraguild predation, should increase with sampled area. This complexity can in turn increase species diversity and ecosystem functioning and also strengthen BEF relationship in food webs (Wang *et al.* 2019).

Recent theory suggests that network properties can be related to BEF mechanisms. These include two ideas: trophic complementarity (Poisot *et al.* 2013) and the vertical diversity (Wang & Brose, 2018). Trophic complementarity extends the species resource complementarity concept to a trophic network by indicating how much consumers in a network feed on different prey species. Maximal complementarity occurs in trophic networks when consumers have low overlap in resource use and predators have low overlap in their exploitation of consumers, e.g. a food web made entirely of unconnected linear food chains (Poisot *et al.* 2013).

The vertical diversity hypothesis (Wang & Brose 2018) predicts that, at a given level of nutrient supply, primary production increases with vertical diversity of complex food webs, as measured by the trophic level and/or body size of the top

predator. The vertical diversity hypothesis is explained by the top-down regulation imposed by the vertical diversity on plant species, which induces selection and complementarity effects analogous to those of horizontal diversity in single-trophic BEF studies. To date, little theory has directly addressed the scaling of food web structure and measures of ecosystem functioning, whether for total energy flux (Brose *et al.* 2004; Barnes *et al.* 2014; Wang & Brose 2018), or stability (McCann *et al.* 2005; Marleau & Guichard 2014).

#### *Empirical evidence*

Evidence is accruing that the manipulation of horizontal and vertical network diversity affects stability and ecosystem function (Srivastava & Bell 2009; Thibaut *et al.* 2012; Fornoff *et al.* 2019; Zhao *et al.* 2019), but few studies have incorporated scale. Experiments have shown that the magnitude and stability of BEF is modified by changes in food web diversity and spatial scale (France & Duffy 2006; Staddon *et al.* 2010; Limberger *et al.* 2019). These studies connected habitat patches via dispersal to study the emergent relationships between B and EF across patches in a metacommunity. France & Duffy (2006) found that dispersal and grazer diversity temporally destabilised the biomass of primary producers in local patches, but stabilised spatial variability across the metacommunity in mesocosms of seagrass. Staddon *et al.*, (2010) quantified the effect of movement corridors on BEF in replicate four-patch metacommunities of moss microarthropods. The absence of corridors led to the extinction of apex predators, increasing prey species abundance. This trophic cascade significantly altered carbon and nitrogen fluxes in isolated habitats. Local extinctions and disruption of ecosystem processes (CO<sub>2</sub> flux, dissolved organic carbon and total nitrogen in leachate) were mitigated, and even reversed, by the presence of corridors because consumer movement was maintained.

## **SYNTHESIS**

Our review of theories and empirical research shows that BEF relationships are dynamic and scale dependent, even in the most human-controlled experiments. Here we discuss four directions for theoretical and empirical synthesis that could guide future work in the near term.

### **Varying grain and extent to ‘unveil’ the BEF relationship across scales**

As we increase the scale of our analysis we can expect to ‘unveil’ nonlinearity in the magnitude and direction of the BEF relationship (Fig. 2). This can be studied empirically by fixing spatial extent and varying the grain by aggregating units of observation to see how coarse-graining alters the magnitude and stability of BEF over metacommunities with varying levels of connectivity. Alternatively, one can estimate the change in BEF relationship across unconnected systems of varying spatial extent that may differ in species pool size and internal heterogeneity (e.g. across oceanic islands of different sizes, or ‘islands’ of habitat fragments or lakes). Both address different and important generating mechanisms of scale

dependence in BEF and may support distinct scaling relationships because of the role of  $\beta$ -diversity (Mori *et al.* 2018). For example, we should expect  $\beta$ -diversity and the rate of species turnover to be greater across island systems (Wardle *et al.* 1997), compared to an equivalent total area from samples of a spatially contiguous system. The greater regional complementarity caused by lower connectivity across island systems should result in stronger scale dependence in BEF (Bond & Chase 2002; Thompson *et al.* 2018).

So far, theories (Wang *et al.* 2017; Thompson *et al.* 2018) and empirical studies (e.g. Barnes *et al.* 2016) have predominantly focused on revealing changes in stability and BEF as grain is aggregated. Recent analyses (Barry *et al.* 2019) combine knowledge of species-area and biomass-area relationships to upscale the species richness-biomass relationships. Empirical research has addressed how biodiversity and ecosystem functioning vary across oceanic islands (Wardle *et al.* 1997) or habitat islands (Gonzalez & Chanton 2002), but neither addressed BEF as a function of extent. Research on the IAR could be easily extended to cross island comparisons and thereby allow an assessment of the effects of grain and extent. Here, there is an opportunity to link ecosystem functioning to interaction network structure and diversity as it is constrained by habitat space/volume (Post *et al.* 2000; Tunney *et al.* 2012).

#### Drivers of asynchrony link stability and biodiversity and ecosystem function across scales

Synchrony, within and among species and functional groups, is predicted to affect the magnitude and stability of ecosystem functioning at different scales. The geography of synchrony (Walter *et al.* 2017) will affect the geography of BEF. Examples include changes in forest growth synchrony and carbon dynamics in Eurasian regions due to climate warming and variability (Shestakova *et al.* 2016) and the global geography and temporal scales of (a)synchrony in primary production on land (Defriez & Reuman 2017) and in the oceans (McGinty *et al.* 2012; Defriez *et al.* 2016). Synchrony in EF across scales is influenced by environmental forcing due to changes in the fluxes of energy (irradiance, heat, wind) and matter (nutrient inputs, biomass inputs) and indirectly by the spectrum of frequencies of response and growth within diverse assemblages of species and functional groups (Vogt *et al.* 2011).

The theory we reviewed shows that asynchrony is central to spatial and temporal complementarity and thus the scaling of BEF and stability. For example, the change in IAR with spatial extent is explained by the distance-dependent decay in synchrony in growth dynamics (Wang *et al.* 2017; Delsol *et al.* 2018) that is altered by local and regional environmental variability, and turnover in diversity among assemblages (Thibaut and Connolly 2013; Wang *et al.* 2019). Ultimately, the magnitude and stability of ecosystem functioning at different scales depends upon whether environmental conditions, movement and trophic interactions synchronise or desynchronise species or functional groups (Ives *et al.* 2000; Gonzalez & Loreau 2009; Gouhier *et al.* 2010; Wang *et al.* 2017; Lamy *et al.* 2019).

Future theory and empirical research could assess three predictors of interspecific synchrony. The first is forcing caused

by fluxes in energy which varies considerably across scales on land and in the oceans (Carrara & Vázquez 2010; Vogt *et al.* 2011; Acevedo-Trejos *et al.* 2018) and is known to be synchronising when driven by strong periodic cycles (Blauw *et al.* 2018), disturbances (Keitt 2008) and autocorrelated random fluctuations (Petchev *et al.* 1997). This environmental variation engenders different compensatory responses among species or functional groups at different scales, reflecting variation in seasonal and interannual phenology (Thackeray *et al.* 2010; Lasky *et al.* 2016) and asynchronous population fluctuations across trophic levels (Fontaine & Gonzalez 2005; Keitt & Fischer 2006; Vasseur & Gaedke 2007; Loreau & de Mazancourt 2008; Fauchald *et al.* 2011; Vasseur *et al.* 2014; Sheppard *et al.* 2019). Second, movement and connectivity across scales can synchronise population fluctuations, even when separated by great distances. This non-local action can arise from long-distance migration events (Bauer & Hoyer 2014) and the topology of environmental teleconnections (Boers *et al.* 2019). Third, spatio-temporal synchrony can be driven by interactions, such as predation, that occur over a range of scales to couple the dynamics of spatially distinct food webs (McCann *et al.* 2005; Gouhier *et al.* 2010). Experiments and empirical surveys that combine two or more of these synchronising factors should elicit scale dependence in BEF magnitude and stability.

#### New theory to tackle the question of scale in BEF

At the most abstract level scale-dependence in BEF relationships can be seen as the outcome of collective dynamics of species persisting as networks of interacting coupled nonlinear oscillators (Kouvaris *et al.* 2010). Of particular interest is the transition from spatio-temporal disorder to synchronised dynamical regimes, which arise by external forcing, endogenous feedback and feedforward mechanisms and spatial flows of information. In this context, the search for linear correlations gives way to nonlinear correlations characterised by synchronisation and phase coherence among the fluctuations components (Gans *et al.* 2009; Gouhier *et al.* 2010). Complementarity among species may occur at one spatial or temporal scale but not at others, depending on the frequency of fluctuations, such as temperature and precipitation, that can drive population fluctuations and set the productivity of the ecosystem they are embedded within. If causal links between biodiversity and ecosystem function are dynamic and scale dependent in this way, then a theory that formalises communities as networks of interacting oscillators will be needed. BEF theory can be framed in this way (Chesson *et al.* 2001; McCann *et al.* 2005; Gravel *et al.* 2016; Wang *et al.* 2019). We now identify several opportunities for further research in this direction.

First, we need a theory that treats BEF relationships as dynamic in space and time (Massol *et al.* 2011a; Leibold *et al.* 2017). Dynamic BEF relationships result from changes in the diversity (i.e., number, evenness and heterogeneity) of the fluctuating component populations and their interactions (Miele *et al.* 2019). Complementarity across scales will arise from the scale dependence in the spatial network of interactions (Peterson *et al.* 1998; Gross & Cardinale 2007; Peters *et al.* 2007).

Reaction-diffusion models of ecosystem patchiness have addressed the emergence of patchiness of species and biomass (van de Koppel *et al.* 2012; Tarnita *et al.* 2017), but not the emergence of cross-correlations (or cross-coherence) between biodiversity and ecosystem function at different scales. A cross-scale theory for BEF can be achieved by combining insights from metaecosystem and metacommunity theory (Massol *et al.* 2011a; Marleau & Guichard 2014; Thompson *et al.* 2017). Integration of these theories allows a simultaneous analysis of how biodiversity change at different trophic levels affect ecosystem processes within and among patches. The generalised Lotka-Volterra framework suggested by Massol *et al.* (2011a) although a big step towards integration, assumes that direct interactions (e.g. predator-prey interactions) are operating on the same time scale, are not spatially explicit and do not track the productivity and location of abiotic resources. These assumptions should be relaxed to study scale dependence in BEF as emergent from cross-scale interactions among levels of organisation in multiplex networks (Scotti *et al.* 2013; Kéfi *et al.* 2016; Piloosof *et al.* 2017).

Moving from landscapes to entire regions or biomes requires models that bridge BEF theory and biogeography (Peters *et al.* 2008). Functional biogeography links functional diversity, mediated by trait-environment relationships, to major cycles and fluxes in ecosystem function, as constrained by climate gradients (Enquist *et al.* 2007, 2015; Reichstein *et al.* 2014). These models have been developed for plants assemblages, but extensions to include other trophic groups such as marine fish assemblages are available (Frainer *et al.* 2017). Trait-based approaches are already developed for meta-community models, so there is an opportunity to extend these models to include realistic trait-environment relationships, and to assess how connectivity leads to the correlation between biodiversity and ecosystem function at regional and global scales (Massol *et al.* 2011a; Reichstein *et al.* 2014; Garcia *et al.* 2016).

#### Linking theory to new observational data on biodiversity change and ecosystem function

Tests of the theory we have reviewed here will require scale-explicit multivariate data amenable to more sophisticated statistical methods that can assess scale dependence in BEF relationships. For that, we need multiscale measures of ecosystem processes (Soranno *et al.* 2019) and biodiversity change (Barnes *et al.* 2016; Chase *et al.* 2019). For measuring biodiversity change at different scales, BEF research must harness current methodological developments (Bush *et al.* 2017), like metagenomics, eDNA (Cristescu & Hebert 2018), remote sensing (Pau & Dee 2016; Rocchini *et al.* 2018) and multi-site monitoring networks and experiments. Scale-explicit analyses will require multiscale statistical methods, such as generalised dissimilarity modelling (Ferrier *et al.* 2007), that can be used to predict spatial patterns of turnover in diversity that are crucial to understanding how the BEF relationship will change across large spatial and temporal extents (Leibold *et al.* 2017; Hu *et al.* 2018; Mori *et al.* 2018). Integrative data analyses using structural equation modelling can evaluate how

BEF relationships might change with scale (Grace *et al.* 2014, 2016). The structure of these models can include uncontrolled factors that covary with diversity and functioning that are inherent to observational data, especially at large spatial scales. Indeed, structural equation models that incorporate multiple scales have already shown their value here (Barnes *et al.* 2016; Grace *et al.* 2016). These approaches can be used in conjunction with frameworks designed for causal inference (Rubin 2005; Pearl 2009) to address multiple causes of change in BEF relationships as we cross scales.

Human impacts on the climate are now so widespread that they can drive patterns of synchrony across large spatial scales (Frank *et al.* 2016), which as we have discussed governs the scaling of ecosystem functioning and its stability. New multivariate methods (Mahecha *et al.* 2019) capable of revealing non-stationary interactions among species assemblages, ecosystem processes and climate forcing could be applied to evaluate how BEF effects are changing under climate change. With larger datasets, including time series across a network of spatial locations, methods such as wavelet analysis can be applied to characterise scales of synchrony and cross-coherence between biodiversity change and ecosystem functions. Given long time series these methods can also detect the effects of changing synchrony on the dynamics of species' fluctuations at different scales (Baldocchi *et al.* 2001; Keitt & Fischer 2006; Vasseur & Gaedke 2007; Stoy *et al.* 2009; Cazelles *et al.* 2014; Walter *et al.* 2017).

#### HUMAN IMPACTS ON BEF ACROSS SCALES

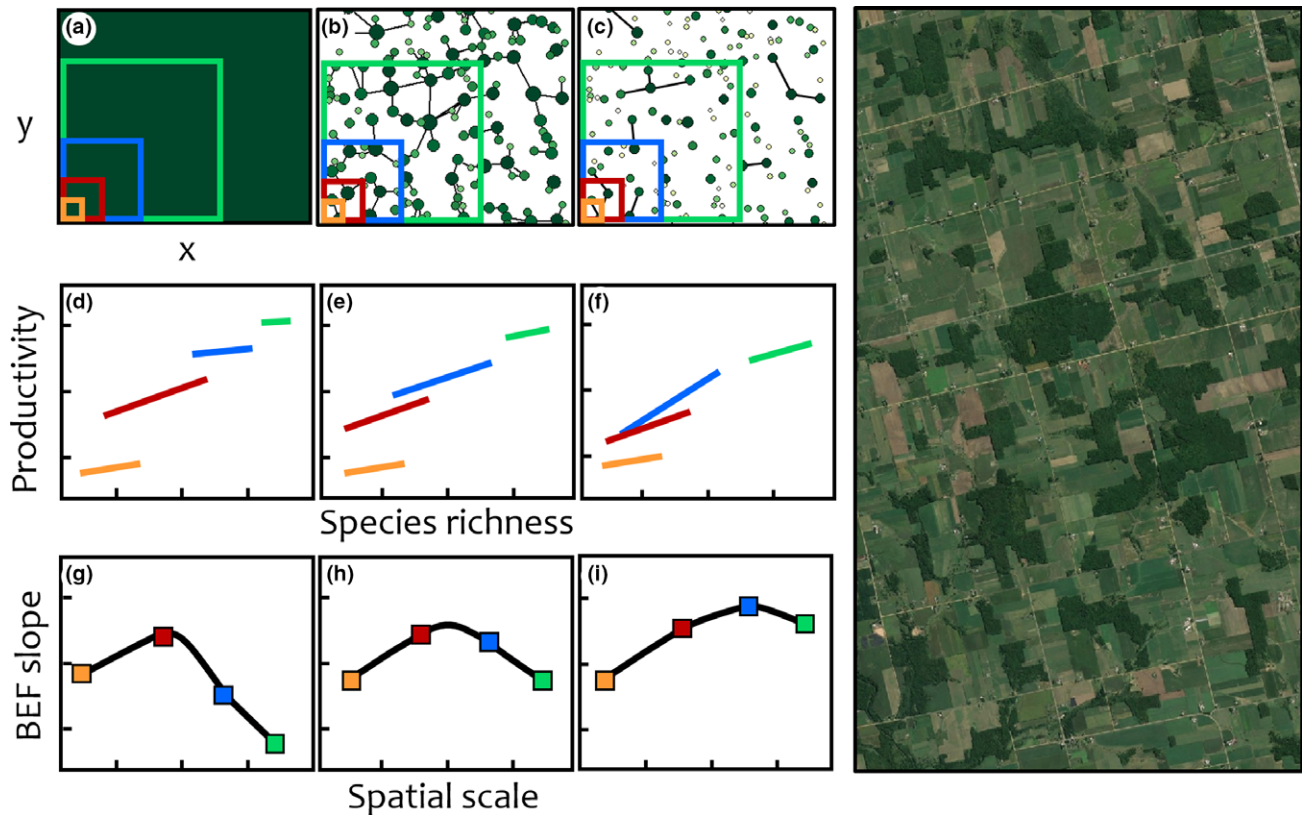
A major motivation for this synthesis is a need for a deeper understanding of the cross-scale impacts of humans on BEF relationships. This is an imperative next step for BEF research because very little of the Earth's land surface is now unaffected by humans, with recent estimates indicating that *c.* 52% is now in a state of intermediate modification, and 84% now affected by multiple impacts (Kennedy *et al.* 2019). Humans modify landscapes by clearing land to make way for agriculture or urban growth, and by altering natural patterns and scales of environmental heterogeneity and disturbance. These effects alter patterns of diversity change locally and regionally (Haddad *et al.* 2015; Newbold *et al.* 2015), that provoke extinction debts, invasion and turnover (Kuussaari *et al.* 2009; Jackson & Sax 2010; Ewers *et al.* 2013). The effects of human land use on BEF relationships and ecosystem services have already been reported at landscape scales (Mitchell *et al.* 2014, 2015; Qiu *et al.* 2018; Winfree *et al.* 2018; van der Plas *et al.* 2019). However, a systematic assessment of how humans affect BEF across scales is needed.

The theory we have reviewed here may explain the impacts of human land use change on the scaling of BEF relationship. We have seen that BEF relationships are sensitive to altered patterns of species turnover in space and time (Keitt & Fischer 2006) because turnover affects the scales at which complementarity to changing environmental conditions are observed. Humans, by fragmenting the landscape, create spatial networks of habitat patches connected to varying degrees (Fig. 5a-c). These alterations to patch connectedness can modify how the BEF slope changes with sampling extent

(Fig. 5d-f), creating complex and unexpected changes in the BEF scaling relationships (Fig. 5g-i). Empirical verification of landscape models like this will become increasingly possible with remotely sensed estimates of ecosystem function and functional diversity (Lausch *et al.* 2016; Schweiger *et al.* 2018).

Future experiments should address the underlying causes of scale dependence in human dominated landscapes. This can be done by examining how changes in the composition, configuration and connectivity of ecosystem fragments can affect

ecosystem functioning and stability (Thompson *et al.* 2017). This may happen for at least three reasons that may be tested as complementary hypotheses. First, land conversion decreases the total area of available natural habitat (e.g., forests, grasslands). For instance, land ownership patterns can determine the sizes and shapes of remnant habitat patches (Keitt *et al.* 1997). Across many small patches,  $\beta$ -diversity can be increased due to random sampling of species occurrences and stochastic extinctions reducing compositional similarity from patch-to-patch. Alternatively, predictable extinction sequences (e.g. ordered by



**Figure 5** Right: Satellite image of an agricultural landscape with remnant forest fragments. Left: Predictions for the change in BEF slope as the scale of observation increases for three landscapes with varying degrees of fragmentation (simulated data). Top row: Stylised landscapes with different patterns of fragmentation of forest habitat (dark green) and surrounding agriculture (white background): (a) homogeneous forest ( $x$  = northing,  $y$  = easting), (b) fragments with varying diversity (circle size) and productivity (circle greenness), with links indicating connectivity by seed dispersal, (c) isolated fragments with lower average diversity and productivity and fewer links. At each scale of observation, denoted by the coloured sampling windows in (a–c), species richness and productivity are measured at different locations across a landscape by sliding the window. Middle row: Change in the linear relationship between species richness and productivity at different scales of observation for each landscape type (d–f). Each coloured line is composed of measurements of species richness and productivity from multiple windows at a given scale. Species richness and productivity increases with the spatial scale of observation for all three landscape types but the form of the BEF relationship varies. Bottom row: Change in the BEF slope as a function of the scale of observation for each landscape type (g–i). Each point corresponds to the value of the slope of the line of same colour in the respective above figure. At a small sampling scale (orange window in (a)) the BEF slope is low and similar in all three landscape types (orange points in (g–i)). At that scale, species richness and productivity are small and not affected by fragmentation (orange lines in (d–f)). At an intermediate sampling scale (red window in (a)), the BEF slope increases in all three landscape types. At that scale, sampling windows accounted for more species richness and higher level of productivity leading to stronger BEF effects. While fragmentation has reduced both biodiversity and productivity (red lines in (d–f)), no notable impact on the BEF slope is observed at this scale (red points (h–i)). At a large sampling scale (blue) the BEF slope decreases in the homogeneous landscape (a, d, g) since most species have already been sampled producing no additional biodiversity effects on productivity. However, when fragments are isolated (c), even if species richness and productivity are lower (f), a wide range of species richness and productivity are sampled (blue line in (f)) leading to an increase in BEF slope (blue point in (i)). The effect of species turnover on the BEF slope is also observed, although to a lesser degree, in the landscape with linked fragments (b, e, h) since species turnover is reduced by the ability of species to disperse across the landscape. At the largest sampling scale (green window in (a)) the BEF slopes decrease in all three landscape types but at different levels (green points in (g–i)). While productivity is higher at that scale, species richness is similar in all sampling windows (green lines in (d–f)).

body size) in small remnant patches can homogenise localities across a large region. Second, habitat loss due to land conversion affects the configuration of remaining patches in a landscape, affecting habitat connectivity (Lamy *et al.* 2016), which we expect to drive scenarios of extinction mediated by trade-offs in dispersal capacity and sensitivity to environmental conditions in fragmented landscapes. This is predicted to increase turnover and  $\beta$ -diversity (Germain *et al.* 2017). Indeed, structural connectivity has been found to alter the slope of the relationship between above-ground carbon and tree functional diversity in remnant forest fragments embedded in crop land (Ziter *et al.* 2013). Third, humans may impact ecosystem function at larger scales by lowering  $\beta$ -diversity (biotic homogenisation) within regions (Nowakowski *et al.* 2018), as well as by causing spillover of non-endemic species into adjacent natural habitat (Bell & Tylianakis 2016). Tests of these expectations can be done in experimental landscapes that control patterns of habitat loss, fragmentation and connectivity (Staddon *et al.* 2010; Lindo *et al.* 2012; Haddad *et al.* 2015), or in systems where patch-to-patch turnover in diversity and composition is controlled directly and can be sampled at multiple spatial scales (Pasari *et al.* 2013).

## CONCLUSIONS

BEF relationships are not constrained to small scales. Much of our evidence for BEF relationships comes from small scales (Fig. 1) because that is where we have sought them. However, like many processes in ecology, we expect BEF relationships to span multiple scales, and because of cross-scale feedbacks, their strength and form will change across scales. We reviewed multiple theories (Table 1) that lead us to expect change in diversity to causally drive variation in ecosystem functioning far beyond the local scale. We have suggested in section 4 how progress can be achieved. We need stronger links between the scaling theory, spatially explicit models of species networks that link functional diversity to (a)synchronous patterns of biomass variation that characterise the change in selection and complementarity effects of diversity on ecosystem processes in space and time. A new generation of networked experiments, surveys and remote-sensing observations are needed to inform global ecosystem models that incorporate BEF knowledge (Enquist *et al.* 2003; Ward *et al.* 2012; Harfoot *et al.* 2014; Asner & Martin 2016; Lausch *et al.* 2016; Acevedo-Trejos *et al.* 2018; Schweiger *et al.* 2018; Tréguer *et al.* 2018). These connections must be understood if BEF research is to foster progress towards the UN's Sustainable Development Goals and our efforts to manage biodiversity for the many benefits ecosystems provide people from local to global scales (Dee *et al.* 2017; Isbell *et al.* 2018).

## ACKNOWLEDGEMENTS

We thank Mary O'Connor and Jane Cowles for valuable discussions and suggestions for improving the manuscript. AG acknowledges the support of NSERC, Killam Fellowship, the Quebec Centre for Biodiversity Science (QCBS) and the Liber Ero Chair in Biodiversity Conservation. DS acknowledges support of NSERC. RMG was supported by the Biodiversity

Research Centre and Killam trust, and NSERC. JC, LD and FI acknowledge support from the US National Science Foundation's LTER Network Communications Office (DEB-1545288). PLT was supported by NSERC and the Killam trust. SK was supported by the ANR project ARSENIC (ANR-14-CE02-0012). YZ, ML and JMM were supported by the TULIP Laboratory of Excellence (ANR-10-LABX-41), and YZ and ML by the BIOTASES Advanced Grant (grant agreement no. 666971), and JMM by the FRAGCLIM Consolidator Grant (grant agreement no. 726176) from the European Research Council under the European Union's Horizon 2020 research and innovation programme. This paper arose from a joint working group supported by the Quebec Centre for Biodiversity Science (working group #12) and the Centre for Biodiversity Theory and Modelling (Moulis, France).

## AUTHORSHIP

All authors contributed to the idea and design of the project. AG led the writing and designed figures 1, 2 and 4. EF produced the data and design for Fig. 5. All authors contributed to the writing of the manuscript.

## DATA AVAILABILITY STATEMENT

The data used to produce Fig. 5 are Accessible through this link: <https://doi.org/10.5281/zenodo.3588403>.

## REFERENCES

- Acevedo-Trejos, E., Marañón, E. & Merico, A. (2018). Phytoplankton size diversity and ecosystem function relationships across oceanic regions. *Proc. R. Soc. B*, 285, 20180621.
- Adler, P.B. & Lauenroth, W.K. (2003). The power of time: spatiotemporal scaling of species diversity. *Ecol. Lett.*, 6, 749–756.
- Alsterberg, C., Roger, F., Sundbäck, K., Juhanson, J., Hulth, S., Hallin, S. *et al.* (2017). Habitat diversity and ecosystem multifunctionality—The importance of direct and indirect effects. *Sci. Adv.*, 3, e1601475.
- Asner, G.P. & Martin, R.E. (2016). Spectranomics: Emerging science and conservation opportunities at the interface of biodiversity and remote sensing. *Glob. Ecol. Conserv.*, 8, 212–219.
- Bagousse-Pinguet, Y.L., Soliveres, S., Gross, N., Torices, R., Berdugo, M. & Maestre, F.T. (2019). Phylogenetic, functional, and taxonomic richness have both positive and negative effects on ecosystem multifunctionality. *Proceedings of the National Academy of Sciences*, 116, 8419–8424.
- Baldocchi, D. (2014). Measuring fluxes of trace gases and energy between ecosystems and the atmosphere – the state and future of the eddy covariance method. *Glob. Change Biol.*, 20, 3600–3609.
- Baldocchi, D., Falge, E., Gu, L., Olson, R., Hollinger, D., Running, S. *et al.* (2001). FLUXNET: a new tool to study the temporal and spatial variability of ecosystem-scale carbon dioxide, water vapor, and energy flux densities. *Bull. Am. Meteorol. Soc.*, 82, 2415–2434.
- Balvanera, P., Pfisterer, A.B., Buchmann, N., He, J.-S., Nakashizuka, T., Raffaelli, D. *et al.* (2006). Quantifying the evidence for biodiversity effects on ecosystem functioning and services. *Ecol. Lett.*, 9, 1146–1156.
- Barnes, A.D., Jochum, M., Mumme, S., Haneda, N.F., Farajallah, A., Widarto, T.H. *et al.* (2014). Consequences of tropical land use for multitrophic biodiversity and ecosystem functioning. *Nat. Commun.*, 5, 5351.
- Barnes, A.D., Weigelt, P., Jochum, M., Ott, D., Hodapp, D., Haneda, N.F. *et al.* (2016). Species richness and biomass explain spatial turnover in ecosystem functioning across tropical and temperate ecosystems..



- Species richness and biomass explain spatial turnover in ecosystem functioning across tropical and temperate ecosystems. *Philos. Trans. R. Soc. Lond. Ser. B Biol. Sci. Philos. Trans. R. Soc. B Biol. Sci.*, 371, 371.
- Barry, K.E., Pinter, G.A., Strini, J.W., Yang, K., Lauko, I.G., Schnitzer, S.A. *et al.* (2019). A universal scaling method for biodiversity-ecosystem functioning relationships. *bioRxiv*, 662783.
- Bauer, S. & Hoyer, B.J. (2014). Migratory animals couple biodiversity and ecosystem functioning worldwide. *Science*, 344, 1242552.
- Bell, G. & Lechowicz, M.J. (1991). Ecology and genetics of fitness in forest plants. I. Environmental heterogeneity measured by explant trials. *J. Ecol.*, 79, 663–685.
- Bell, T. & Tylianakis, J.M. (2016). Microbes in the Anthropocene: spillover of agriculturally selected bacteria and their impact on natural ecosystems. *Proc. R. Soc. B Biol. Sci.*, 283, 20160896.
- Bell, G., Lechowicz, M.J., Appenzeller, A., Chandler, M., DeBlois, E., Jackson, L. *et al.* (1993). The spatial structure of the physical environment. *Oecologia*, 96, 114–121.
- Bengtsson, J., Engelhardt, K., Giller, P., Hobbie, S.E., Lawrence, D., Levine, J. *et al.* (2002). Slippin' and slidin' between the scales: the scaling components of biodiversity-ecosystem functioning relations. In: *Biodiversity and ecosystem functioning: synthesis and perspectives* (eds Loreau, M., Naeem, S., Inchausti, P.). Oxford University Press, Oxford, pp. 209–220.
- Blauw, A.N., Benincà, E., Laane, R.W.P.M., Greenwood, N. & Huisman, J. (2018). Predictability and environmental drivers of chlorophyll fluctuations vary across different time scales and regions of the North Sea. *Prog. Oceanogr.*, 161, 1–18.
- Boers, N., Goswami, B., Rheinwalt, A., Bookhagen, B., Hoskins, B. & Kurths, J. (2019). Complex networks reveal global pattern of extreme-rainfall teleconnections. *Nature*, 566, 373–377.
- Bond, E.M. & Chase, J.M. (2002). Biodiversity and ecosystem functioning at local and regional spatial scales. *Ecol. Lett.*, 5, 467–470.
- Brose, U. & Hillebrand, H. (2016). Biodiversity and ecosystem functioning in dynamic landscapes. *Phil Trans R Soc B*, 371, 20150267.
- Brose, U., Ostling, A., Harrison, K. & Martinez, N.D. (2004). Unified spatial scaling of species and their trophic interactions. *Nature*, 428, 167–171.
- Burley, H.M., Mokany, K., Ferrier, S., Laffan, S.W., Williams, K.J. & Harwood, T.D. (2016). Macroecological scale effects of biodiversity on ecosystem functions under environmental change. *Ecol. Evol.*, 6, 2579–2593.
- Bush, A., Sollmann, R., Wilting, A., Bohmann, K., Cole, B., Balzter, H. *et al.* (2017). Connecting Earth observation to high-throughput biodiversity data. *Nat. Ecol. Evol.*, 1, 0176.
- Cardinale, B.J. (2011). Biodiversity improves water quality through niche partitioning. *Nature*, 472, 86–89.
- Cardinale, B.J., Ives, A.R. & Inchausti, P. (2004). Effects of species diversity on the primary productivity of ecosystems: extending our spatial and temporal scales of inference. *Oikos*, 104, 437–450.
- Cardinale, B.J., Wright, J.P., Cadotte, M.W., Carroll, I.T., Hector, A., Srivastava, D.S. *et al.* (2007). Impacts of plant diversity on biomass production increase through time because of species complementarity. *Proc. Natl Acad. Sci.*, 104, 18123–18128.
- Cardinale, B.J., Duffy, J.E., Srivastava, D.S., Loreau, M., Thomas, M. & Emmerson, M. (2009). Cardinale *et al.* 2009 - Towards a food web perspective on biodiversity and ecosystem functioning. In: *Biodiversity, ecosystem functioning, and human wellbeing: an ecological and economic perspective* (eds Naeem, S., Bunker, D.E., Hector, A., Loreau, M. & Perrings, C.). Oxford University Press, Oxford, pp. 105–120.
- Cardinale, B.J., Matulich, K.L., Hooper, D.U., Byrnes, J.E., Duffy, E., Gamfeldt, L. *et al.* (2011). The functional role of producer diversity in ecosystems. *Am. J. Bot.*, 98, 572–592.
- Carrara, R. & Vázquez, D.P. (2010). The species-energy theory: a role for energy variability. *Ecography*, 33, 942–948.
- Cazelles, B., Cazelles, K. & Chavez, M. (2014). Wavelet analysis in ecology and epidemiology: impact of statistical tests. *J. R. Soc. Interface*, 11, 20130585.
- Cermeño, P., Chouciño, P., Fernández-Castro, B., Figueiras, F.G., Maraño, E., Marrasé, C. *et al.* (2016). Marine primary productivity is driven by a selection effect. *Frontiers in Marine Science*, 3, 173.
- Chase, J.M., McGill, B.J., Thompson, P.L., Antão, L.H., Bates, A.E., Blowes, S.A. *et al.* (2019). Species richness change across spatial scales. *Oikos*, 128, 1079–1091.
- Chave, J., Condit, R., Aguilar, S., Hernandez, A., Lao, S. & Perez, R. (2004). Error propagation and scaling for tropical forest biomass estimates. *Philos. Trans. R. Soc. Lond. B Biol. Sci.*, 359, 409–420.
- Chesson, P., Pacala, S. & Neuhauser, C. (2001). Environmental niches and ecosystem functioning. In *The Functional Consequences of Biodiversity* (eds Tilman, D., Kinzig, A.P., Pacala, S.). Princeton University Press, Princeton, pp. 213–245.
- Chisholm, R.A., Muller-Landau, H.C., Abdul Rahman, K., Bebbler, D.P., Bin, Y., Bohlman, S.A. *et al.* (2013). Scale-dependent relationships between tree species richness and ecosystem function in forests. *J. Ecol.*, 101, 1214–1224.
- Costanza, R., Fisher, B., Mulder, K., Liu, S. & Christopher, T. (2007). Biodiversity and ecosystem services: A multi-scale empirical study of the relationship between species richness and net primary production. *Ecol. Econ.*, 61, 478–491.
- Cristescu, M.E. & Hebert, P.D.N. (2018). Uses and misuses of environmental DNA in biodiversity science and conservation. *Annu. Rev. Ecol. Evol. Syst.*, 49, 209–230.
- Dee, L.E., Lara, M.D., Costello, C. & Gaines, S.D. (2017). To what extent can ecosystem services motivate protecting biodiversity? *Ecol. Lett.*, 20, 935–946.
- Dee, L.E., Miller, S.J., Peavey, L.E., Bradley, D., Gentry, R.R., Startz, R., *et al.* (2016). Functional diversity of catch mitigates negative effects of temperature variability on fisheries yields. *Proc. R. Soc. B*, 283, 20161435.
- Defriez, E.J. & Reuman, D.C. (2017). A global geography of synchrony for terrestrial vegetation. *Glob. Ecol. Biogeogr.*, 26, 878–888.
- Defriez, E.J., Sheppard, L.W., Reid, P.C. & Reuman, D.C. (2016). Climate change-related regime shifts have altered spatial synchrony of plankton dynamics in the North Sea. *Glob. Change Biol.*, 22, 2069–2080.
- DeLong, J.P. & Gibert, J.P. (2019). Larger area facilitates richness-function effects in experimental microcosms. *Am. Nat.*, 193, 738–747.
- Delsol, R., Loreau, M. & Haegeman, B. (2018). The relationship between the spatial scaling of biodiversity and ecosystem stability. *Glob. Ecol. Biogeogr.*, 27, 439–449.
- Dimitrakopoulos, P.G. & Schmid, B. (2004). Biodiversity effects increase linearly with biotope space: diversity effects increase with biotope space. *Ecol. Lett.*, 7, 574–583.
- Duffy, J.E. (2003). Biodiversity loss, trophic skew and ecosystem functioning. *Ecol. Lett.*, 6, 680–687.
- Duffy, J.E., Cardinale, B.J., France, K.E., McIntyre, P.B., Thébault, E. & Loreau, M. (2007). The functional role of biodiversity in ecosystems: incorporating trophic complexity. *Ecol. Lett.*, 10, 522–538.
- Duffy, J.E., Godwin, C.M. & Cardinale, B.J. (2017). Biodiversity effects in the wild are common and as strong as key drivers of productivity. *Nature*, 549, 261–264.
- Dungan, J.L., Perry, J.N., Dale, M.R.T., Legendre, P., Citron-Pousty, S., Fortin, M.-J. *et al.* (2002). A balanced view of scale in spatial statistical analysis. *Ecography*, 25, 626–640.
- Elmqvist, T., Folke, C., Nyström, M., Peterson, G., Bengtsson, J., Walker, B. *et al.* (2003). Response diversity, ecosystem change, and resilience. *Front. Ecol. Environ.*, 1, 488–494.
- Enquist, B.J., Ecomomo, E.P., Huxman, T.E., Allen, A.P., Ignace, D.D. & Gillooly, J.F. (2003). Scaling metabolism from organisms to ecosystems. *Nature*, 423, 639–642.
- Enquist, B.J., Kerkhoff, A.J., Stark, S.C., Swenson, N.G., McCarthy, M.C. & Price, C.A. (2007). A general integrative model for scaling plant growth, carbon flux and functional trait spectra. *Nature*, 449, 218–222.

- Enquist, B.J., Norberg, J., Bonser, S.P., Violle, C., Webb, C.T., Henderson, A., et al. (2015). Scaling from traits to ecosystems: developing a general trait driver theory via integrating trait-based and metabolic scaling theories. In: *Advances in Ecological Research* (eds Pawar, S., Woodward, G. & Dell, A.I.). Elsevier, pp. 249–318.
- Ewers, R.M., Didham, R.K., Pearse, W.D., Lefebvre, V., Rosa, I.M.D., Carreiras, J.M.B. et al. (2013). Using landscape history to predict biodiversity patterns in fragmented landscapes. *Ecol. Lett.*, 16, 1221–1233.
- Fauchald, P., Skov, H., Skern-Mauritzen, M., Hausner, V.H., Johns, D. & Tveraa, T. (2011). Scale-dependent response diversity of seabirds to prey in the North Sea. *Ecology*, 92, 228–239.
- Ferrier, S., Manion, G., Elith, J. & Richardson, K. (2007). Using generalized dissimilarity modelling to analyse and predict patterns of beta diversity in regional biodiversity assessment. *Divers. Distrib.*, 13, 252–264.
- Fontaine, C. & Gonzalez, A. (2005). Population synchrony induced by resource fluctuations and dispersal in an aquatic microcosm. *Ecology*, 86, 1463–1471.
- Fornoff, F., Klein, A.-M., Blüthgen, N. & Staab, M. (2019). Tree diversity increases robustness of multi-trophic interactions. *Proc. R. Soc. B Biol. Sci.*, 286, 20182399.
- Frainer, A., Primicerio, R., Kortsch, S., Aune, M., Dolgov, A.V., Fosheim, M. et al. (2017). Climate-driven changes in functional biogeography of Arctic marine fish communities. *Proc. Natl Acad. Sci.*, 114, 12202–12207.
- France, K.E. & Duffy, J.E. (2006). Diversity and dispersal interactively affect predictability of ecosystem function. *Nature*, 441, 1139–1143.
- Frank, K.T., Petrie, B., Leggett, W.C. & Boyce, D.G. (2016). Large scale, synchronous variability of marine fish populations driven by commercial exploitation. *Proc. Natl Acad. Sci.*, 113, 8248–8253.
- Fung, T., Farnsworth, K.D., Reid, D.G. & Rossberg, A.G. (2015). Impact of biodiversity loss on production in complex marine food webs mitigated by prey-release. *Nat. Commun.*, 6, 1–8.
- Galiana, N., Lurgi, M., Claramunt-López, B., Fortin, M.-J., Leroux, S., Cazelles, K. et al. (2018). The spatial scaling of species interaction networks. *Nat. Ecol. Evol.*, 2, 782–790.
- Gans, F., Schumann, A.Y., Kantelhardt, J.W., Penzel, T. & Fietze, I. (2009). Cross-modulated amplitudes and frequencies characterize interacting components in complex systems. *Phys. Rev. Lett.*, 102, 098701.
- García, E.S., Swann, A.L.S., Villegas, J.C., Breshears, D.D., Law, D.J., Saleska, S.R. et al. (2016). Synergistic ecoclimate teleconnections from forest loss in different regions structure global ecological responses. *PLoS ONE*, 11, e0165042.
- García-Palacios, P., Gross, N., Gaitán, J. & Maestre, F.T. (2018). Climate mediates the biodiversity-ecosystem stability relationship globally. *Proc. Natl Acad. Sci.*, 115, 8400–8405.
- Germain, R.M., Strauss, S.Y. & Gilbert, B. (2017). Experimental dispersal reveals characteristic scales of biodiversity in a natural landscape. *Proc. Natl Acad. Sci.*, 114, 4447–4452.
- Gonzalez, A. & Chanton, E.J. (2002). Heterotroph species extinction, abundance and biomass dynamics in an experimentally fragmented microecosystem. *J. Anim. Ecol.*, 71, 594–602.
- Gonzalez, A. & De Feo, O. (2007). Environmental variability modulates the insurance effects of diversity in non-equilibrium communities. In *The Impact of Environmental Variability on Ecological Systems* (eds Vasseur, D.A., McCann, K.S.). Springer, Netherlands, Dordrecht, pp. 159–177.
- Gonzalez, A. & Loreau, M. (2009). The causes and consequences of compensatory dynamics in ecological communities. *Annu. Rev. Ecol. Syst.*, 40, 393–414.
- Gouhier, T.C., Guichard, F. & Gonzalez, A. (2010). Synchrony and stability of food webs in metacommunities. *Am. Nat.*, 175, E16–E34.
- Grace, J.B., Michael Anderson, T., Smith, M.D., Seabloom, E., Andelman, S.J., Meche, G. et al. (2007). Does species diversity limit productivity in natural grassland communities? *Ecol. Lett.*, 10, 680–689.
- Grace, J.B., Adler, P.B., Harpole, W.S., Borer, E.T. & Seabloom, E.W. (2014). Causal networks clarify productivity–richness interrelations, bivariate plots do not. *Funct. Ecol.*, 28, 787–798.
- Grace, J.B., Anderson, T.M., Seabloom, E.W., Borer, E.T., Adler, P.B., Harpole, W.S. et al. (2016). Integrative modelling reveals mechanisms linking productivity and plant species richness. *Nature*, 529, 390–393.
- Gravel, D., Bell, T., Barbera, C., Bouvier, T., Pommier, T., Venail, P. et al. (2011). Experimental niche evolution alters the strength of the diversity–productivity relationship. *Nature*, 469, 89–92.
- Gravel, D., Massol, F. & Leibold, M.A. (2016). Stability and complexity in model meta-ecosystems. *Nat. Commun.*, 7, 12457.
- Gross, K. & Cardinale, B.J. (2007). Does species richness drive community production or vice versa? *Reconciling Historical and Contemporary Paradigms in Competitive Communities*, 170, 207–220.
- Guelzow, N., Muijers, F., Ptacnik, R. & Hillebrand, H. (2017). Functional and structural stability are linked in phytoplankton metacommunities of different connectivity. *Ecography*, 40, 719–732.
- Guerrero-Ramírez, N.R., Craven, D., Reich, P.B., Ewel, J.J., Isbell, F., Koricheva, J. et al. (2017). Diversity-dependent temporal divergence of ecosystem functioning in experimental ecosystems. *Nat. Ecol. Evol.*, 1, 1639.
- Guidi, L., Chaffron, S., Bittner, L., Eveillard, D., Larhlimi, A., Roux, S. et al. (2016). Plankton networks driving carbon export in the oligotrophic ocean. *Nature*, 532, 465–470.
- Haddad, N.M., Brudvig, L.A., Clobert, J., Davies, K.F., Gonzalez, A., Holt, R.D. et al. (2015). Habitat fragmentation and its lasting impact on Earth's ecosystems. *Sci. Adv.*, 1, e1500052–e1500052.
- Haegeman, B. & Loreau, M. (2014). General relationships between consumer dispersal, resource dispersal and metacommunity diversity. *Ecol. Lett.*, 17, 175–184.
- Harfoot, M.B.J., Newbold, T., Tittensor, D.P., Emmott, S., Hutton, J., Lyutsarev, V. et al. (2014). Emergent global patterns of ecosystem structure and function from a mechanistic general ecosystem model. *PLoS Biol.*, 12, e1001841.
- Harpole, W.S. & Tilman, D. (2007). Grassland species loss resulting from reduced niche dimension. *Nature*, 446, 791–793.
- Hart, S.P., Usinowicz, J. & Levine, J.M. (2017). The spatial scales of species coexistence. *Nat. Ecol. Evol.*, 1, 1066–1073.
- Hawkins, B.A., Field, R., Cornell, H.V., Currie, D.J., Guégan, J.-F., Kaufman, D.M. et al. (2003). Energy, water, and broad-scale geographic patterns of species richness. *Ecology*, 84, 3105–3117.
- Hector, A., Schmid, B., Beierkuhnlein, C., Caldeira, M.C., Diemer, M., Dimitrakopoulos, P.G., et al. (1999). Plant diversity and productivity experiments in European grasslands. *Science*, 286, 1123–1127.
- Holt, R.D., Lawton, J.H., Polis, G.A. & Martinez, N.D. (1999). Trophic rank and the species-area relationship. *Ecology*, 80, 1495–1504.
- Hooper, D.U., Chapin, F.S., Ewel, J.J., Hector, A., Inchausti, P., Lavorel, S. et al. (2005). Effects of biodiversity on ecosystem functioning: a consensus of current knowledge. *Ecol. Monogr.*, 75, 3–35.
- Hu, Z., Guo, Q., Li, S., Piao, S., Knapp, A.K., Ciais, P. et al. (2018). Shifts in the dynamics of productivity signal ecosystem state transitions at the biome-scale. *Ecol. Lett.*, 21, 1457–1466.
- Hughes, A.R. & Stachowicz, J.J. (2004). Genetic diversity enhances the resistance of a seagrass ecosystem to disturbance. *Proc. Natl Acad. Sci.*, 101, 8998–9002.
- Hughes, A.R., Inouye, B.D., Johnson, M.T.J., Underwood, N. & Vellend, M. (2008). Ecological consequences of genetic diversity. *Ecol. Lett.*, 11, 609–623.
- Isbell, F., Gonzalez, A., Loreau, M., Cowles, J., Díaz, S., Hector, A. et al. (2017). Linking the influence and dependence of people on biodiversity across scales. *Nature*, 546, 65–72.
- Isbell, F., Cowles, J., Dee, L.E., Loreau, M., Reich, P.B., Gonzalez, A. et al. (2018). Quantifying effects of biodiversity on ecosystem functioning across times and places. *Ecol. Lett.*, 21, 763–778.
- Ives, A.R., Klug, J.L. & Gross, K. (2000). Stability and species richness in complex communities. *Ecol. Lett.*, 3, 399–411.
- Jackson, S.T. & Sax, D.F. (2010). Balancing biodiversity in a changing environment: extinction debt, immigration credit and species turnover. *Trends Ecol. Evol.*, 25, 153–160.

- Jia, X., Zha, T., Gong, J., Zhang, Y., Wu, B., Qin, S. *et al.* (2018). Multi-scale dynamics and environmental controls on net ecosystem CO<sub>2</sub> exchange over a temperate semiarid shrubland. *Agric. For. Meteorol.*, 259, 250–259.
- Jiang, L., Wan, S. & Li, L. (2009). Species diversity and productivity: why do results of diversity-manipulation experiments differ from natural patterns? *J. Ecol.*, 97, 603–608.
- Kardol, P., Fanin, N. & Wardle, D.A. (2018). Long-term effects of species loss on community properties across contrasting ecosystems. *Nature*, 557, 710.
- Kéfi, S., Miele, V., Wieters, E.A., Navarrete, S.A. & Berlow, E.L. (2016). How structured is the entangled bank? the surprisingly simple organization of multiplex ecological networks leads to increased persistence and resilience. *PLOS Biol.*, 14, e1002527.
- Keitt, T.H. (2008). Coherent ecological dynamics induced by large-scale disturbance. *Nature*, 454, 331–334.
- Keitt, T.H. & Fischer, J. (2006). Detection of scale-specific community dynamics using wavelets. *Ecology*, 87, 2895–2904.
- Keitt, T., Urban, D. & Milne, B. (1997). Detecting critical scales in fragmented landscapes. *Conservation Ecology*, 1, 4.
- Kennedy, C.M., Oakleaf, J.R., Theobald, D.M., Baruch-Mordo, S. & Kiesecker, J. (2019). Managing the middle: A shift in conservation priorities based on the global human modification gradient. *Glob. Change Biol.*, 25, 811–826.
- van de Koppel, J., Bouma, T.J. & Herman, P.M.J. (2012). The influence of local- and landscape-scale processes on spatial self-organization in estuarine ecosystems. *J. Exp. Biol.*, 215, 962–967.
- Kouvaris, N., Provata, A. & Kugiumtzis, D. (2010). Detecting synchronization in coupled stochastic ecosystem networks. *Phys. Lett. A*, 374, 507–515.
- Kreft, H. & Jetz, W. (2007). Global patterns and determinants of vascular plant diversity. *Proc. Natl Acad. Sci.*, 104, 5925–5930.
- Kuussaari, M., Bommarco, R., Heikkinen, R.K., Helm, A., Krauss, J., Lindborg, R. *et al.* (2009). Extinction debt: a challenge for biodiversity conservation. *Trends Ecol. Evol.*, 24, 564–571.
- Lamy, T., Liss, K.N., Gonzalez, A. & Bennett, E.M. (2016). Landscape structure affects the provision of multiple ecosystem services. *Environ. Res. Lett.*, 11, 124017.
- Lamy, T., Wang, S., Renard, D., Lafferty, K.D., Reed, D.C. & Miller, R.J. (2019). Species insurance trumps spatial insurance in stabilizing biomass of a marine macroalgal metacommunity. *Ecology*, 100, e02719.
- Langenheder, S., Bulling, M.T., Solan, M. & Prosser, J.I. (2010). Bacterial biodiversity-ecosystem functioning relations are modified by environmental complexity. *PLoS ONE*, 5, e10834.
- Lasky, J.R., Uriarte, M., Boukili, V.K., Erickson, D.L., John Kress, W. & Chazdon, R.L. (2014). The relationship between tree biodiversity and biomass dynamics changes with tropical forest succession. *Ecol. Lett.*, 17, 1158–1167.
- Lasky, J.R., Uriarte, M. & Muscarella, R. (2016). Synchrony, compensatory dynamics, and the functional trait basis of phenological diversity in a tropical dry forest tree community: effects of rainfall seasonality. *Environ. Res. Lett.*, 11, 115003.
- Lausch, A., Bannehr, L., Beckmann, M., Boehm, C., Feilhauer, H., Hacker, J.M. *et al.* (2016). Linking Earth Observation and taxonomic, structural and functional biodiversity: Local to ecosystem perspectives. *Ecol. Indic.*, 70, 317–339.
- Lefcheck, J.S., Innes-Gold, A.A., Brandl, S.J., Steneck, R.S., Torres, R.E. & Rasher, D.B. (2019). Tropical fish diversity enhances coral reef functioning across multiple scales. *Sci. Adv.*, 5, eaav6420.
- Leibold, M.A. & Chase, J.M. (2018). *Metacommunity ecology*. Princeton University Press, Princeton.
- Leibold, M.A., Chase, J.M. & Ernest, S.K.M. (2017). Community assembly and the functioning of ecosystems: how metacommunity processes alter ecosystems attributes. *Ecology*, 98, 909–919.
- Lévy, M. (2008). The modulation of biological production by oceanic mesoscale turbulence. In *Transport and Mixing in Geophysical Flows* (eds Weiss, J.B., & Provenzale, A.). Springer, Berlin Heidelberg, Berlin, Heidelberg, pp. 219–261.
- Liang, J., Crowther, T.W., Picard, N., Wiser, S., Zhou, M., Alberti, G. *et al.* (2016). Positive biodiversity-productivity relationship predominant in global forests. *Science*, 354, aaf8957–aaf8957.
- Limberger, R., Pitt, A., Hahn, M.W. & Wickham, S.A. (2019). Spatial insurance in multi-trophic metacommunities. *Ecol. Lett.*, 22, 1828–1837.
- Lindo, Z., Whiteley, J. & Gonzalez, A. (2012). Traits explain community disassembly and trophic contraction following experimental environmental change. *Glob. Change Biol.*, 18, 2448–2457.
- Loreau, M. (2001). Biodiversity and ecosystem functioning: current knowledge and future challenges. *Science*, 294, 804–808.
- Loreau, M. (2010). *From Populations to Ecosystems: Theoretical Foundations for a New Ecological Synthesis (MPB-46)*. Princeton University Press, Princeton.
- Loreau, M. & de Mazancourt, C. (2008). Species synchrony and its drivers: Neutral and nonneutral community dynamics in fluctuating environments. *Am. Nat.*, 172, E48–E66.
- Loreau, M. & de Mazancourt, C. (2013). Biodiversity and ecosystem stability: a synthesis of underlying mechanisms. *Ecol. Lett.*, 16, 106–115.
- Loreau, M. & Holt, R.D. (2004). Spatial flows and the regulation of ecosystems. *Am. Nat.*, 163, 606–615.
- Loreau, M., Mouquet, N. & Gonzalez, A. (2003). Biodiversity as spatial insurance in heterogeneous landscapes. *Proc. Natl Acad. Sci.*, 100, 12765–12770.
- Luo, W., Liang, J., Gatti, R.C., Zhao, X. & Zhang, C. (2019). Parameterization of biodiversity-productivity relationship and its scale dependency using georeferenced tree-level data. *J. Ecol.*, 107, 1106–1119.
- Maestre, F.T., Eldridge, D.J., Soliveres, S., Kéfi, S., Delgado-Baquerizo, M., Bowker, M.A. *et al.* (2016). Structure and functioning of dryland ecosystems in a changing world. *Annu. Rev. Ecol. Evol. Syst.*, 47, 215–237.
- Mahecha, M.D., Gans, F., Brandt, G., Christiansen, R., Cornell, S.E., Fomferra, N., *et al.* (2019). Earth system data cubes unravel global multivariate dynamics (preprint). Dynamics of the Earth system: concepts.
- Marina, L., Oliver, J., Stephanie, D., Follows, M. J. & Francesco, d'O. (2015). The dynamical landscape of marine phytoplankton diversity. *J. R. Soc. Interface*, 12, 20150481.
- Marleau, J. & Guichard, F. (2014). Meta-ecosystem dynamics and functioning on finite spatial networks. *Proc. R. Soc. B Biol. Sci.*, 281, 20132094.
- Marleau, J.N., Guichard, F. & Loreau, M. (2014). Meta-ecosystem dynamics and functioning on finite spatial networks. *Proc. Biol. Sci.*, 281, 20132094.
- Massol, F., Gravel, D., Mouquet, N., Cadotte, M.W., Fukami, T. & Leibold, M.A. (2011a). Linking community and ecosystem dynamics through spatial ecology: An integrative approach to spatial food webs. *Ecol. Lett.*, 14, 313–323.
- de Mazancourt, C., Isbell, F., Larocque, A., Berendse, F., Luca, E.D., Grace, J.B. *et al.* (2013). Predicting ecosystem stability from community composition and biodiversity. *Ecol. Lett.*, 16, 617–625.
- McCann, K.S., Rasmussen, J.B. & Umbanhowar, J. (2005). The dynamics of spatially coupled food webs: Spatially coupled food webs. *Ecol. Lett.*, 8, 513–523.
- McGinty, N., Power, A.M. & Johnson, M.P. (2012). Trophodynamics and stability of regional scale ecosystems in the Northeast Atlantic. *ICES J. Mar. Sci.*, 69, 764–775.
- Miele, V., Guill, C., Ramos-Jiliberto, R. & Kéfi, S. (2019). Non-trophic interactions strengthen the diversity-functioning relationship in an ecological bioenergetic network model. *PLOS Comput. Biol.*, 15, e1007269.
- Mitchell, M.G.E., Bennett, E.M. & Gonzalez, A. (2014). Forest fragments modulate the provision of multiple ecosystem services. *J. Appl. Ecol.*, 51, 909–918.
- Mitchell, M.G.E., Bennett, E.M. & Gonzalez, A. (2015). Strong and nonlinear effects of fragmentation on ecosystem service provision at multiple scales. *Environ. Res. Lett.*, 10, 094014.

- Mori, A.S., Isbell, F. & Seidl, R. (2018).  $\beta$ -Diversity, community assembly, and ecosystem functioning. *Trends Ecol. Evol.*, 33, 549–564.
- Naeem, S. (2006). Expanding scales in biodiversity-based research: challenges and solutions for marine systems. *Mar. Ecol. Prog. Ser.*, 311, 273–283.
- Newbold, T., Hudson, L.N., Hill, S.L.L., Contu, S., Lysenko, I., Senior, R.A. *et al.* (2015). Global effects of land use on local terrestrial biodiversity. *Nature*, 520, 45–50.
- Niu, S., Fu, Z., Luo, Y., Stoy, P.C., Keenan, T.F., Poulter, B. *et al.* (2017). Interannual variability of ecosystem carbon exchange: From observation to prediction. *Glob. Ecol. Biogeogr.*, 26, 1225–1237.
- Nowakowski, A.J., Frishkoff, L.O., Thompson, M.E., Smith, T.M. & Todd, B.D. (2018). Phylogenetic homogenization of amphibian assemblages in human-altered habitats across the globe. *Proc. Natl Acad. Sci.*, 115, E3454–E3462.
- O'Connor, M.I., Gonzalez, A., Byrnes, J.E.K., Cardinale, B.J., Duffy, J.E., Gamfeldt, L. *et al.* (2017). A general biodiversity-function relationship is mediated by trophic level. *Oikos*, 126, 18–31.
- Oehri, J., Schmid, B., Schaepman-Strub, G. & Niklaus, P.A. (2017). Biodiversity promotes primary productivity and growing season lengthening at the landscape scale. *Proc. Natl Acad. Sci.*, 114, 10160–10165.
- Pappas, C., Mahecha, M.D., Frank, D.C., Babst, F. & Koutsoyiannis, D. (2017). Ecosystem functioning is enveloped by hydrometeorological variability. *Nat. Ecol. Evol.*, 1, 1263–1270.
- Pasari, J.R., Levi, T., Zavaleta, E.S. & Tilman, D. (2013). Several scales of biodiversity affect ecosystem multifunctionality. *Proc. Natl Acad. Sci.*, 110, 10219–10222.
- Pau, S. & Dee, L.E. (2016). Remote sensing of species dominance and the value for quantifying ecosystem services. *Remote Sens. Ecol. Conserv.*, 2, 141–151.
- Pearl, J. (2009). Causal inference in statistics: An overview. *Stat. Surv.*, 3, 96–146.
- Petchev, O.L., Gonzalez, A. & Wilson, H.B. (1997). Effects on population persistence: the interaction between environmental noise colour, intraspecific competition and space. *Proc. R. Soc. Lond. B Biol. Sci.*, 264, 1841–1847.
- Peters, D.P.C., Bestelmeyer, B.T. & Turner, M.G. (2007). Cross-scale interactions and changing pattern-process relationships: consequences for system dynamics. *Ecosystems*, 10, 790–796.
- Peters, D.P., Groffman, P.M., Nadelhoffer, K.J., Grimm, N.B., Collins, S.L., Michener, W.K. *et al.* (2008). Living in an increasingly connected world: a framework for continental-scale environmental science. *Front. Ecol. Environ.*, 6, 229–237.
- Peterson, G., Allen, C.R. & Holling, C.S. (1998). Ecological resilience, biodiversity, and scale. *Ecosystems*, 1, 6–18.
- Pilosof, S., Porter, M.A., Pascual, M. & Kéfi, S. (2017). The multilayer nature of ecological networks. *Nat. Ecol. Evol.*, 1, 0101.
- van der Plas, F., Allan, E., Fischer, M., Alt, F., Arndt, H., Binkenstein, J. *et al.* (2019). Towards the development of general rules describing landscape heterogeneity–multifunctionality relationships. *J. Appl. Ecol.*, 56, 168–179.
- Poisot, T., Mouquet, N. & Gravel, D. (2013). Trophic complementarity drives the biodiversity-ecosystem functioning relationship in food webs. *Ecol. Lett.*, 16, 853–861.
- Post, D.M., Pace, M.L. & Hairston, N.G. (2000). Ecosystem size determines food-chain length in lakes. *Nature*, 405, 1047–1049.
- Ptácnik, R., Solimini, A.G., Andersen, T., Tamminen, T., Brettum, P., Lepistö, L. *et al.* (2008). Diversity predicts stability and resource use efficiency in natural phytoplankton communities. *Proc. Natl Acad. Sci.*, 105, 5134–5138.
- Qiu, J., Carpenter, S.R., Booth, E.G., Motew, M., Zipper, S.C., Kucharik, C.J. *et al.* (2018). Understanding relationships among ecosystem services across spatial scales and over time. *Environ. Res. Lett.*, 13, 054020.
- Le Quéré, C., Andrew, R.M., Canadell, J.G., Sitch, S., Korsbakken, J.I., Peters, G.P. *et al.* (2016). Global carbon budget 2016. *Earth Syst. Sci. Data*, 8, 605–649.
- Ratcliffe, S., Wirth, C., Jucker, T., van der Plas, F., Scherer-Lorenzen, M., Verheyen, K. *et al.* (2017). Biodiversity and ecosystem functioning relations in European forests depend on environmental context. *Ecol. Lett.*, 20, 1414–1426.
- Reich, P.B., Tilman, D., Isbell, F., Mueller, K., Hobbie, S.E., Flynn, D.F.B. *et al.* (2012). Impacts of biodiversity loss escalate through time as redundancy fades. *Science*, 336, 589–592.
- Reichstein, M., Bahn, M., Mahecha, M.D., Kattge, J. & Baldocchi, D.D. (2014). Linking plant and ecosystem functional biogeography. *Proc. Natl Acad. Sci.*, 111, 13697–13702.
- Ritchie, M.E. & Olff, H. (1999). Spatial scaling laws yield a synthetic theory of biodiversity. *Nature*, 400, 557–560.
- Rocchini, D., Luque, S., Pettorelli, N., Bastin, L., Doktor, D., Faedi, N. *et al.* (2018). Measuring  $\beta$ -diversity by remote sensing: A challenge for biodiversity monitoring. *Methods Ecol. Evol.*, 9, 1787–1798.
- Roscher, C., Temperton, V.M., Scherer-Lorenzen, M., Schmitz, M., Schumacher, J., Schmid, B. *et al.* (2005). Overyielding in experimental grassland communities - irrespective of species pool or spatial scale. *Ecol. Lett.*, 8, 419–429.
- Rubin, D.B. (2005). Causal inference using potential outcomes. *J. Am. Stat. Assoc.*, 100, 322–331.
- Ryberg, W.A. & Chase, J.M. (2007). Predator-dependent species-area relationships. *Am. Nat.*, 170, 636–642.
- Sanaei, A., Granzow-de la Cerda, Í. & Cayuela, L. (2018). Grain size affects the relationship between species richness and above-ground biomass in semi-arid rangelands. *Plant Ecol. Divers.*, 11, 489–499.
- Schieber, T.A., Carpi, L., Díaz-Guilera, A., Pardalos, P.M., Masoller, C. & Ravetti, M.G. (2017). Quantification of network structural dissimilarities. *Nat. Commun.*, 8, 1–10.
- Schindler, D.E., Hilborn, R., Chasco, B., Boatright, C.P., Quinn, T.P., Rogers, L.A. *et al.* (2010). Population diversity and the portfolio effect in an exploited species. *Nature*, 465, 609–612.
- Schramski, J.R., Dell, A.I., Grady, J.M., Sibly, R.M. & Brown, J.H. (2015). Metabolic theory predicts whole-ecosystem properties. *Proc. Natl Acad. Sci.*, 112, 2617–2622.
- Schweiger, A.K., Cavender-Bares, J., Townsend, P.A., Hobbie, S.E., Madritch, M.D., Wang, R. *et al.* (2018). Plant spectral diversity integrates functional and phylogenetic components of biodiversity and predicts ecosystem function. *Nat. Ecol. Evol.*, 2, 976–982.
- Schweitzer, J.A., Bailey, J.K., Hart, S.C. & Whitham, T.G. (2005). Nonadditive effects of mixing cottonwood genotypes on litter decomposition and nutrient dynamics. *Ecology*, 86, 2834–2840.
- Scotti, M., Ciocchetta, F. & Jordán, F. (2013). Social and landscape effects on food webs: a multi-level network simulation model. *J. Complex Netw.*, 1, 160–182.
- Shanafelt, D.W., Dieckmann, U., Jonas, M., Franklin, O., Loreau, M. & Perrings, C. (2015). Biodiversity, productivity, and the spatial insurance hypothesis revisited. *J. Theor. Biol.*, 380, 426–435.
- Sheppard, L.W., Defriez, E.J., Reid, P.C. & Reuman, D.C. (2019). Synchrony is more than its top-down and climatic parts: interacting Moran effects on phytoplankton in British seas. *PLoS Comput. Biol.*, 15, e1006744.
- Shestakova, T.A., Gutiérrez, E., Kiryanov, A.V., Camarero, J.J., Génova, M., Knorre, A.A. *et al.* (2016). Forests synchronize their growth in contrasting Eurasian regions in response to climate warming. *Proc. Natl Acad. Sci.*, 113, 662–667.
- Smith, S.L., Vallina, S.M. & Merico, A. (2016). Phytoplankton size-diversity mediates an emergent trade-off in ecosystem functioning for rare versus frequent disturbances. *Sci. Rep.*, 6, 34170.
- Snelgrove, P.V.R., Thrush, S.F., Wall, D.H. & Norkko, A. (2014). Real world biodiversity-ecosystem functioning: a seafloor perspective. *Trends Ecol. Evol.*, 29, 398–405.
- Soininen, J., Jamoneau, A., Rosebery, J. & Passy, S.I. (2016). Global patterns and drivers of species and trait composition in diatoms. *Glob. Ecol. Biogeogr.*, 25, 940–950.
- Srivastava, D.S. & Bell, T. (2009). Reducing horizontal and vertical diversity in a foodweb triggers extinctions and impacts functions. *Ecol. Lett.*, 12, 1016–1028.

- Srivastava, D.S. & Vellend, M. (2005). Biodiversity-ecosystem function research: is it relevant to conservation? *Annu. Rev. Ecol. Evol. Syst.*, 36, 267–294.
- Staddon, P., Lindo, Z., Crittenden, P.D., Gilbert, F. & Gonzalez, A. (2010). Connectivity, non-random extinction and ecosystem function in experimental metacommunities: Ecosystem function in experimental metacommunities. *Ecol. Lett.*, 13, 543–552.
- Steele, J.H. (1985). A comparison of terrestrial and marine ecological systems. *Nature*, 313, 355.
- Storch, D., Marquet, P.A. & Brown, J.H. (2007). *Scaling biodiversity | Ecology and conservation*. Cambridge University Press, Cambridge.
- Stoy, P.C., Richardson, A.D., Baldocchi, D.D., Katul, G.G., Stanovick, J., Mahecha, M.D. et al. (2009). Biosphere-atmosphere exchange of CO<sub>2</sub> in relation to climate: a cross-biome analysis across multiple time scales. *Biogeosciences*, 6, 2297–2312.
- Sullivan, M.J.P., Talbot, J., Lewis, S.L., Phillips, O.L., Qie, L., Begne, S.K. et al. (2017). *Diversity and Carbon Storage Across The Tropical Forest Biome*. Sci. Rep., p. 7.
- Tarnita, C.E., Bonachela, J.A., Sheffer, E., Guyton, J.A., Coverdale, T.C., Long, R.A. et al. (2017). A theoretical foundation for multi-scale regular vegetation patterns. *Nature*, 541, 398.
- Thackeray, S.J., Sparks, T.H., Frederiksen, M., Burthe, S., Bacon, P.J., Bell, J.R. et al. (2010). Trophic level asynchrony in rates of phenological change for marine, freshwater and terrestrial environments. *Glob. Change Biol.*, 16, 3304–3313.
- Thébault, E. & Loreau, M. (2003). Food-web constraints on biodiversity-ecosystem functioning relationships. *Proc. Natl Acad. Sci.*, 100, 14949–14954.
- Thébault, E. & Loreau, M. (2005). Trophic Interactions and the relationship between species diversity and ecosystem stability. *Am. Nat.*, 166, E95–E114.
- Thibaut, L.M., Connolly, S.R. & Sweatman, H.P.A. (2012). Diversity and stability of herbivorous fishes on coral reefs. *Ecology*, 93, 891–901.
- Thompson, P.L. & Gonzalez, A. (2016). Ecosystem multifunctionality in metacommunities. *Ecology*, 97, 2867–2879.
- Thompson, P.L., Beisner, B.E. & Gonzalez, A. (2015). Warming induces synchrony and destabilizes experimental pond zooplankton metacommunities. *Oikos*, 124, 1171–1180.
- Thompson, P.L., Rayfield, B. & Gonzalez, A. (2017). Loss of habitat and connectivity erodes species diversity, ecosystem functioning, and stability in metacommunity networks. *Ecography*, 40, 98–108.
- Thompson, P.L., Isbell, F., Loreau, M., O'Connor, M.I. & Gonzalez, A. (2018). The strength of the biodiversity-ecosystem function relationship depends on spatial scale. *Proc. R. Soc. B Biol. Sci.*, 285, 20180038.
- Tilman, D. (1997). Community invasibility, recruitment limitation, and grassland biodiversity. *Ecology*, 78, 81–92.
- Tilman, D., Reich, P.B. & Isbell, F. (2012). Biodiversity impacts ecosystem productivity as much as resources, disturbance, or herbivory. *Proc. Natl Acad. Sci.*, 109, 10394–10397.
- Tréguer, P., Bowler, C., Moriceau, B., Dutkiewicz, S., Gehlen, M., Aumont, O. et al. (2018). Influence of diatom diversity on the ocean biological carbon pump. *Nat. Geosci.*, 11, 27–37.
- Tunney, T.D., McCann, K.S., Lester, N.P. & Shuter, B.J. (2012). Food web expansion and contraction in response to changing environmental conditions. *Nat. Commun.*, 3, 1–9.
- Tylianakis, J.M., Rand, T.A., Kahmen, A., Klein, A.-M., Buchmann, N., Perner, J. et al. (2008). Resource heterogeneity moderates the biodiversity-function relationship in real world ecosystems. *PLoS Biol.*, 6, e122.
- Vallina, S.M., Follows, M.J., Dutkiewicz, S., Montoya, J.M., Cermeno, P. & Loreau, M. (2014). Global relationship between phytoplankton diversity and productivity in the ocean. *Nature Communications*, 5, 4299.
- Vallina, S.M., Cermeno, P., Dutkiewicz, S., Loreau, M. & Montoya, J.M. (2017). Phytoplankton functional diversity increases ecosystem productivity and stability. *Ecol. Model.*, 361, 184–196.
- Vasseur, D.A. & Gaedke, U. (2007). Spectral analysis unmasks synchronous and compensatory dynamics in plankton communities. *Ecology*, 88, 2058–2071.
- Vasseur, D.A. & Yodzis, P. (2004). The color of environmental noise. *Ecology*, 85, 1146–1152.
- Vasseur, D.A., Fox, J.W., Gonzalez, A., Adrian, R., Beisner, B.E., Helmus, M.R. et al. (2014). Synchronous dynamics of zooplankton competitors prevail in temperate lake ecosystems. *Proc. R. Soc. B Biol. Sci.*, 281, 20140633–20140633.
- Violle, C., Reich, P.B., Pacala, S.W., Enquist, B.J. & Kattge, J. (2014). The emergence and promise of functional biogeography. *Proc. Natl Acad. Sci.*, 111, 13690–13696.
- Vogt, R.J., Rusak, J.A., Patoine, A. & Leavitt, P.R. (2011). Differential effects of energy and mass influx on the landscape synchrony of lake ecosystems. *Ecology*, 92, 1104–1114.
- Walter, J.A., Sheppard, L.W., Anderson, T.L., Kastens, J.H., Bjørnstad, O.N., Liebhold, A.M. et al. (2017). The geography of spatial synchrony. *Ecol. Lett.*, 20, 801–814.
- Wang, S. & Brose, U. (2018). Biodiversity and ecosystem functioning in food webs: the vertical diversity hypothesis. *Ecol. Lett.*, 21, 9–20.
- Wang, S. & Loreau, M. (2016). Biodiversity and ecosystem stability across scales in metacommunities. *Ecol. Lett.*, 19, 510–518.
- Wang, S., Loreau, M., Arnoldi, J.-F., Fang, J., Rahman, K.A., Tao, S. et al. (2017). An invariability-area relationship sheds new light on the spatial scaling of ecological stability. *Nat. Commun.*, 8, 15211.
- Wang, S., Brose, U. & Gravel, D. (2019). Intraguild predation enhances biodiversity and functioning in complex food webs. *Ecology*, 100, e02616.
- Ward, B.A., Dutkiewicz, S., Jahn, O. & Follows, M.J. (2012). A size-structured food-web model for the global ocean. *Limnol. Oceanogr.*, 57, 1877–1891.
- Wardle, D.A., Zackrisson, O., Hörnberg, G. & Gallet, C. (1997). The influence of island area on ecosystem properties. *Science*, 277, 1296–1299.
- Whalen, M.A., Aquilino, K.M. & Stachowicz, J.J. (2016). Grazer diversity interacts with biogenic habitat heterogeneity to accelerate intertidal algal succession. *Ecology*, 97, 2136–2146.
- Williams, L.J., Paquette, A., Cavender-Bares, J., Messier, C. & Reich, P.B. (2017). Spatial complementarity in tree crowns explains overyielding in species mixtures. *Nat. Ecol. Evol.*, 1, 0063.
- Winfrey, R., Reilly, J.R., Bartomeus, I., Cariveau, D.P., Williams, N.M. & Gibbs, J. (2018). Species turnover promotes the importance of bee diversity for crop pollination at regional scales. *Science*, 359, 791–793.
- Woolley, S.N.C., Tittensor, D.P., Dunstan, P.K., Guillera-Aroita, G., Lahoz-Monfort, J.J., Wintle, B.A. et al. (2016). Deep-sea diversity patterns are shaped by energy availability. *Nature*, 533, 393–396.
- Worm, B. & Duffy, J.E. (2003). Biodiversity, productivity and stability in real food webs. *Trends Ecol. Evol.*, 18, 628–632.
- Yachi, S. & Loreau, M. (1999). Biodiversity and ecosystem productivity in a fluctuating environment: The insurance hypothesis. *Proc. Natl Acad. Sci.*, 96, 1463–1468.
- Yasuhara, M., Doi, H., Wei, C.-L., Danovaro, R. & Myhre, S.E. (2016). Biodiversity-ecosystem functioning relationships in long-term time series and palaeoecological records: deep sea as a test bed. *Philos. Trans. R. Soc. B Biol. Sci.*, 371, 20150282.
- Zhao, Q., den Brink, P.J.V., Carpentier, C., Wang, Y.X.G., Rodríguez-Sánchez, P., Xu, C. et al. (2019). Horizontal and vertical diversity jointly shape food web stability against small and large perturbations. *Ecol. Lett.*, 22, 1152–1162.
- Ziter, C., Bennett, E.M. & Gonzalez, A. (2013). Functional diversity and management mediate aboveground carbon stocks in small forest fragments. *Ecosphere*, 4, art85.

Editor, Ulrich Brose

Manuscript received 14 October 2019

First decision made 18 November 2019

Manuscript accepted 14 December 2019