



**HAL**  
open science

## **COSMOGRAIL XIX: Time delays in 18 strongly lensed quasars from 15 years of optical monitoring**

M. Millon, F. Courbin, V. Bonvin, E. Paic, G. Meylan, M. Tewes, D. Sluse, P. Magain, J.H.H. Chan, A. Galan, et al.

► **To cite this version:**

M. Millon, F. Courbin, V. Bonvin, E. Paic, G. Meylan, et al.. COSMOGRAIL XIX: Time delays in 18 strongly lensed quasars from 15 years of optical monitoring. *Astronomy and Astrophysics - A&A*, 2020, 640, pp.A105. 10.1051/0004-6361/202037740 . hal-02497861

**HAL Id: hal-02497861**

**<https://hal.science/hal-02497861>**

Submitted on 20 Jun 2022

**HAL** is a multi-disciplinary open access archive for the deposit and dissemination of scientific research documents, whether they are published or not. The documents may come from teaching and research institutions in France or abroad, or from public or private research centers.

L'archive ouverte pluridisciplinaire **HAL**, est destinée au dépôt et à la diffusion de documents scientifiques de niveau recherche, publiés ou non, émanant des établissements d'enseignement et de recherche français ou étrangers, des laboratoires publics ou privés.

# COSMOGRAIL

## XIX. Time delays in 18 strongly lensed quasars from 15 years of optical monitoring<sup>★</sup>

M. Millon<sup>1</sup>, F. Courbin<sup>1</sup>, V. Bonvin<sup>1</sup>, E. Paic<sup>1</sup>, G. Meylan<sup>1</sup>, M. Tewes<sup>2</sup>, D. Sluse<sup>3</sup>, P. Magain<sup>3</sup>, J. H. H. Chan<sup>1</sup>, A. Galan<sup>1</sup>, R. Joseph<sup>1,4</sup>, C. Lemon<sup>1</sup>, O. Tihhonova<sup>1</sup>, R. I. Anderson<sup>5,6</sup>, M. Marmier<sup>5</sup>, B. Chazelas<sup>5</sup>, M. Lendl<sup>5</sup>, A. H. M. J. Triaud<sup>5,7</sup>, and A. Wytttenbach<sup>5,8</sup>

- <sup>1</sup> Institute of Physics, Laboratory of Astrophysics, Ecole Polytechnique Fédérale de Lausanne (EPFL), Observatoire de Sauverny, 1290 Versoix, Switzerland  
e-mail: martin.millon@epfl.ch
- <sup>2</sup> Argelander-Institut für Astronomie, Auf dem Hügel 71, 53121 Bonn, Germany
- <sup>3</sup> STAR Institute, Quartier Agora – Allée du six Août, 19c, 4000 Liège, Belgium
- <sup>4</sup> Department of Astrophysical Sciences, Princeton University, Princeton, NJ 08544, USA
- <sup>5</sup> Observatoire Astronomique de l'Université de Genève, 51 ch. des Maillettes, 1290 Versoix, Switzerland
- <sup>6</sup> European Southern Observatory, Karl-Schwarzschild-Str. 2, 85748 Garching b. München, Germany
- <sup>7</sup> School of Physics & Astronomy, University of Birmingham, Edgbaston, Birmingham B15 2TT, UK
- <sup>8</sup> Université Grenoble Alpes, CNRS, IPAG, 38000 Grenoble, France

Received 14 February 2020 / Accepted 8 June 2020

### ABSTRACT

We present the results of 15 years of monitoring lensed quasars, which was conducted by the COSMOGRAIL programme at the *Leonhard Euler* 1.2 m Swiss Telescope. The decade-long light curves of 23 lensed systems are presented for the first time. We complement our data set with other monitoring data available in the literature to measure the time delays in 18 systems, among which nine reach a relative precision better than 15% for at least one time delay. To achieve this, we developed an automated version of the curve-shifting toolbox PyCS to ensure robust estimation of the time delay in the presence of microlensing, while accounting for the errors due to the imperfect representation of microlensing. We also re-analysed the previously published time delays of RX J1131–1231 and HE 0435–1223, by adding six and two new seasons of monitoring, respectively, and confirming the previous time-delay measurements. When the time delay measurement is possible, we corrected the light curves of the lensed images from their time delay and present the difference curves to highlight the microlensing signal contained in the data. To date, this is the largest sample of decade-long lens monitoring data, which is useful to measure  $H_0$  and the size of quasar accretion discs with microlensing as well as to study quasar variability.

**Key words.** gravitational lensing: strong – cosmology: observations

### 1. Introduction

In the  $\Lambda$ CDM paradigm, the Universe is composed of cold dark matter (CDM) and includes a cosmological constant,  $\Lambda$ . For a flat topology, it is described by a set of six free parameters. The current expansion rate of the Universe, the Hubble constant  $H_0$ , can either be derived from these six parameters or measured directly. It is therefore playing a major role in verifying the agreement between theory and observations. One way of determining  $H_0$  is to measure distance parallaxes of Cepheid stars in the Milky Way and in the Magellanic Clouds and then use them to calibrate brighter standard candles, such as type Ia supernovae (SNIa), thus reaching larger distances. Using this method, the most precise estimate so far is  $H_0 = 74.03 \pm 1.42 \text{ km s}^{-1} \text{ Mpc}^{-1}$  (Riess et al. 2019). This method is known as the distance ladder method.

Conversely, it is also possible to measure  $H_0$  by using the physical size of the baryon acoustic oscillation (BAO) at the time of recombination in maps of the cosmic microwave background (CMB) at  $z \sim 1100$  (Eisenstein et al. 2007) and then

extrapolate it with a model fitted on the same CMB maps, down to  $z = 0$ . This is known as the inverse distance ladder and it gives  $H_0 = 67.4 \pm 0.5 \text{ km s}^{-1} \text{ Mpc}^{-1}$  in a flat cosmology (Planck Collaboration VI 2020). The two values of  $H_0$  are currently in tension, indicating that there is either unknown sources of systematics in the measurements or that the  $\Lambda$ CDM model needs further extensions (e.g. see Suyu et al. 2018; de Grijs et al. 2017, for reviews). Other independent methods probing the late Universe, such as gravitational waves (Abbott et al. 2017; Feeney et al. 2019; Soares-Santos et al. 2019), water megamasers (Humphreys et al. 2013; Braatz et al. 2018; Pesce et al. 2020), galaxy clustering (Abbott et al. 2018; Philcox et al. 2020) or alternative calibrators of the SNIa such as Mira variables (Huang et al. 2020) and the tip of the red giant branch (TRGB) method (Freedman et al. 2020; Yuan et al. 2019) are extremely valuable to infer whether the apparent tension is real or not. In fact, the methods tend to support the existence of the tension between  $H_0$  measurements from early and late Universe probes (e.g. Verde et al. 2019).

A complementary and single-step technique to measure  $H_0$  in the late Universe is called time-delay cosmography. The

<sup>★</sup> All light curves presented in this paper are only available at the CDS via anonymous ftp to [cdsarc.u-strasbg.fr](https://cdsarc.u-strasbg.fr) (130.79.128.5) or via <http://cdsarc.u-strasbg.fr/viz-bin/cat/J/A+A/640/A105>

original idea was first proposed by Refsdal (1964). It uses the time delays between the images of strongly lensed quasars or supernovae to infer their so-called time delay distance  $D_{\Delta t}$  (see e.g. Refsdal 1964; Suyu 2012). When a background source is multiply imaged by a foreground galaxy, the travel time of the photons along each optical path is not exactly the same. This effect is due to the difference in length between the optical paths and to the gravitational delay caused by the potential well of the lensing galaxy as well as all mass contribution along the line of sight. As a consequence, if the unlensed source is photometrically variable, its variations are seen by the observer at different times in each lensed image. Quasars are ideal sources for time delay cosmography. Their high luminosity makes them visible over cosmological distances and their variability allows for the measurement of time delays. Since the discovery of the first multiply imaged quasar (Walsh et al. 1979, Q0957+561), the number of lensed quasars has drastically increased, especially in recent years with the discovery of dozens of new systems in large sky surveys such as the Dark Energy Survey (DES) (Agnello et al. 2015, 2018; Anguita et al. 2018) or the ESA *Gaia* mission (Lemon et al. 2018, 2019; Krone-Martins et al. 2018). The first time-delay measurement, for Q0957+561, was the subject of a ten-year controversy, with large uncertainties and even contradictory results from radio and optical observations (Vanderriest et al. 1989; Schild 1990; Roberts et al. 1991; Press et al. 1992). This controversy was finally solved by Kundic et al. (1997), but this reflects the difficulty of measuring time delays with poorly sampled light curves over short monitoring campaigns, mainly due to the microlensing by stars in the lens galaxy. As these pass in front of the quasar images, they introduce extrinsic variations atop the intrinsic variations of the quasar. Since these extrinsic variations are different in each quasar image, they distort the observed light curves and complicate the time-delay measurement.

The COSMOGRAIL programme (Courbin et al. 2005; Eigenbrod et al. 2005) is a long term lens monitoring programme whose goal is to provide the time delays for a large sample of strongly lensed quasars. The long-term follow-up of these objects was originally carried out by five 1 m class telescopes with, in particular, uninterrupted observations for 15 years at the *Leonhard Euler* 1.2 m Swiss Telescope (hereafter *Euler*) at ESO La Silla, Chile. Some of the previous COSMOGRAIL results include precise time delays for HE 0435–1223 (Courbin et al. 2011; Bonvin et al. 2017), RX J1131–1231 (Tewes et al. 2013a), SDSS J1206+4332 (Eulaers et al. 2013), PG 1115+080 (Bonvin et al. 2018) and WFI J2033–4723 (Bonvin et al. 2019). Along with B 1608+656, whose time delays have been measured in radio data by Fassnacht et al. (1999), these systems were used by the HOLICOW collaboration (H0 Lenses In COSMOGRAIL’s Well-spring; see Suyu et al. 2017, for an overview of the programme) to measure  $H_0 = 73.3^{+1.7}_{-1.8} \text{ km s}^{-1} \text{ Mpc}^{-1}$  at 2.4% precision (Wong et al. 2020). This result is in good agreement with the local distance ladder method but in  $3.1\sigma$  tension with the *Planck* observation. Improving the precision on  $H_0$  and devising tests to check possible systematic errors will require more lenses with measured time delays, which is the contribution of the present work.

The paper describes our observations in Sect. 2 as well as the reduction process followed by deconvolution-photometry to extract the light curves from the blended quasar images. Section 3 describes how we measure the time delays in an automated and robust way, accounting for microlensing variations and providing uncertainties using simulated light curves.

Section 4 presents the time-delay measurements for all our objects and Sect. 5 gives our conclusion and future plans for COSMOGRAIL.

## 2. Observation and data reduction

### 2.1. ECAM and C2 data reduction

Most of our data were acquired with the Swiss 1.2 m *Euler* telescope at the ESO La Silla observatory (Chile). The scheduled cadence of observation was originally of one observation every four days. The data presented here were acquired with two different instruments, namely C2 and EulerCAM (hereafter ECAM). The C2 camera was used from January 2004 to September 2010. It has a field of view of  $11.4' \times 11.4'$  and a pixel size of  $0.344''$ . ECAM collected data from November 2010 to April 2018. It has a pixel size of  $0.215''$  and a field of view of  $14' \times 14'$ . Table 1 summarises all data used in this paper. In regular operation mode, each epoch corresponds to five dithered exposures of 360 s each in *R* band. Among all lens systems presented here, RX J1131–1231, HE 0435–1223, SDSS J1226–0006 and HS 0818+1227 were monitored during the 15 years of the programme, from 2004 to spring 2018. We add respectively two and six new monitoring seasons to HE 0435–1223 and RX J1131–1231 compared to their last appearance in a COSMOGRAIL publication (Bonvin et al. 2017; Tewes et al. 2013a).

The images were reduced in a consistent fashion using an updated version of the COSMOULINE pipeline<sup>1</sup>, in a very similar approach as Tewes et al. (2013b). In this pipeline, one of the most crucial steps is the deblending of the light from the quasar images and the foreground lens galaxy; this has been achieved using the MCS deconvolution algorithm (Magain et al. 1998; Cantale et al. 2016) according to the following procedure.

Firstly, the science exposures are corrected for the bias and the flat-field exposures to remove the additional bias level and correct for the CCD pixel efficiency variations. To do so, we follow standard but careful CCD reduction procedures with a pipeline described in Tewes et al. (2013b). Secondly, the Point Spread Function (PSF) is measured on every individual exposure for a set of stars (e.g. labelled PSF1 to PSF6 on Fig. 1). The selected stars are chosen to be relatively close to the lens and with a magnitude comparable to the brightest quasar image. The PSF is composed of an analytical Moffat profile plus a pixel-grid correction. Thirdly, a deconvolution of reference stars (e.g. N1 to NX on Fig. 1) is performed using the PSF build in the previous step. The most photometrically stable stars are selected to compute a median photometric normalisation coefficient for each exposure. This process also allows us to correct for image-to-image systematics that are introduced by PSF variations across the field. Finally, all images of the lensed quasar are then normalised using the coefficients computed previously and deconvolved simultaneously. The MCS algorithm outputs a model composed of a list of Gaussian point sources with improved resolution, representing the multiple images of the source and a “pixel channel”, that includes all possible extended sources such as the lens galaxy, extended features of the source and companions of the lens galaxy. During the deconvolution process, the pixel channel is fixed for all exposures, as well as the relative astrometry of the quasar images, but the intensity of the latter is allowed to vary from exposure to exposure. As a result, the output of the process is the photometry of the quasar images for each exposure. The photometric data points are finally combined

<sup>1</sup> <https://github.com/COSMOGRAIL/COSMOULINE>

**Table 1.** Summary of the COSMOGRAIL monitoring data.

Object	$z_{\text{lens}}$	$z_{\text{source}}$	Telescope (Instrument)	#Epochs	Total exposure time [h]	Duration of monitoring
HE 0047–1756	0.407	1.678	<i>Euler</i> (C2)	237	124.1	Aug. 2005–Sep. 2010
			<i>Euler</i> (ECAM)	316	160.8	Sep. 2010–Oct. 2016
UM 673 (Q 0142–100)	0.491	2.73	<i>Euler</i> (C2)	175	92.2	Aug. 2005–Sep. 2010
			<i>Euler</i> (ECAM)	179	91.4	Sep. 2010–Oct. 2016
Q J0158–4325	0.317	1.29	<i>Euler</i> (C2)	222	113.9	Oct. 2004–Sep. 2010
			<i>Euler</i> (ECAM)	305	154.1	Sep. 2010–Feb. 2018
			SMARTS(Andicam)	270	83.4	Aug. 2003–Dec. 2010
HE 0230–2130	0.523	2.162	<i>Euler</i> (C2)	51	34.5	Jul. 2004–Oct. 2006
			<i>Euler</i> (ECAM)	122	63.2	Aug. 2013–Oct. 2016
SDSS J0246–0825	0.723	1.689	<i>Euler</i> (C2)	122	71.0	Nov. 2006–Sep. 2010
			<i>Euler</i> (ECAM)	249	130.0	Sep. 2010–Apr. 2018
HE 0435–1223	0.454	1.693	<i>Euler</i> (C2)	301	150.5	Jan. 2004–Apr. 2010
			<i>Euler</i> (ECAM)	419	221.2	Sep. 2010–Aug. 2018
			SMARTS(Andicam)	136	40.8	Aug. 2003–Apr. 2005
			<i>Mercator</i> (MEROPE)	104	52.0	Sep 2004.–Dec 2008
			Maidanak (SITE)	26	26.0	Oct. 2004 –Jul. 2006
			Maidanak (SI)	8	4.8	Aug. 2006 –Jan. 2007
HS 0818+1227	0.39	3.113	<i>Euler</i> (C2)	215	118.6	Jan. 2005–May 2010
			<i>Euler</i> (ECAM)	151	76.6	Nov. 2010–Apr. 2018
SDSS J0832+0404	0.659	1.116	<i>Euler</i> (ECAM)	237	121.0	Nov. 2010–May. 2018
SDSS J0924+0219	0.393	1.523	<i>Euler</i> (C2)	25	15.8	Jan. 2004–Oct. 2005
			<i>Euler</i> (ECAM)	106	52.4	Nov. 2010–Dec. 2015
			SMARTS(Andicam)	158	61.9	Nov. 2003–May 2011
RX J1131–1231	0.295	0.657	<i>Euler</i> (C2)	265	132.5	Mar. 2004–Jul. 2010
			<i>Euler</i> (ECAM)	311	162.0	Nov. 2010–Jul. 2018
			SMARTS(Andicam)	288	86.4	Dec. 2003–May 2011
			<i>Mercator</i> (MEROPE)	78	39.0	Jan. 2005–Jun. 2008
SDSS J1226–0006	0.517	1.123	<i>Euler</i> (C2)	257	135.2	Jan. 2005–Jul. 2010
			<i>Euler</i> (ECAM)	226	118.9	Dec. 2010–Jul. 2018
SDSS J1320+1644	0.899	1.502	<i>Euler</i> (ECAM)	41	21.3	Mar. 2013–Jul. 2016
SDSS J1322+1052	~0.55	1.717	<i>Euler</i> (ECAM)	115	61.5	Jan. 2011–Jul. 2016
SDSS J1335+0118	0.44	1.570	<i>Euler</i> (C2)	214	114.2	Jan 2005–Aug. 2010
			<i>Euler</i> (ECAM)	161	80.9	Jan. 2011–Aug. 2017
SDSS J1349+1227	~0.65	1.722	<i>Euler</i> (ECAM)	144	72.6	Jan. 2011–Aug. 2017
Q 1355–2257	0.702	1.370	<i>Euler</i> (C2)	311	167.2	Jul. 2003–Aug. 2010
			<i>Euler</i> (ECAM)	89	44.1	Jan. 2011–Jul. 2015
SDSS J1405+0959	~0.66	1.81	<i>Euler</i> (ECAM)	58	30.5	Feb. 2014–Aug. 2017
SDSS J1455+1447	~0.42	1.424	<i>Euler</i> (ECAM)	130	65.6	Feb. 2011–Aug. 2017
SDSS J1515+1511	0.742	2.054	<i>Euler</i> (ECAM)	63	31.5	Mar. 2014–Aug. 2017
			Liverpool(IO:O)	150	30.0	May. 2014–Sep. 2016
SDSS J1620+1203	0.398	1.158	<i>Euler</i> (C2)	12	7.1	Mar. 2010–Sep. 2010
			<i>Euler</i> (ECAM)	194	100.6	Feb. 2011–Sep. 2017
WFIJ2026–4536	~1.04	2.23	<i>Euler</i> (C2)	338	130.9	Avg. 2004–Sep. 2010
			<i>Euler</i> (ECAM)	210	112.8	Oct. 2010–Nov. 2016
HE 2149–2745	0.603	2.033	<i>Euler</i> (C2)	222	121.0	Aug. 2006–Sep. 2010
			<i>Euler</i> (ECAM)	263	135.0	Oct. 2010–Dec. 2017
Q 2237+0305	0.039	1.69	<i>Euler</i> (ECAM)	62	33.0	Nov. 2010–Jul. 2015
Total				8336	4094.0	

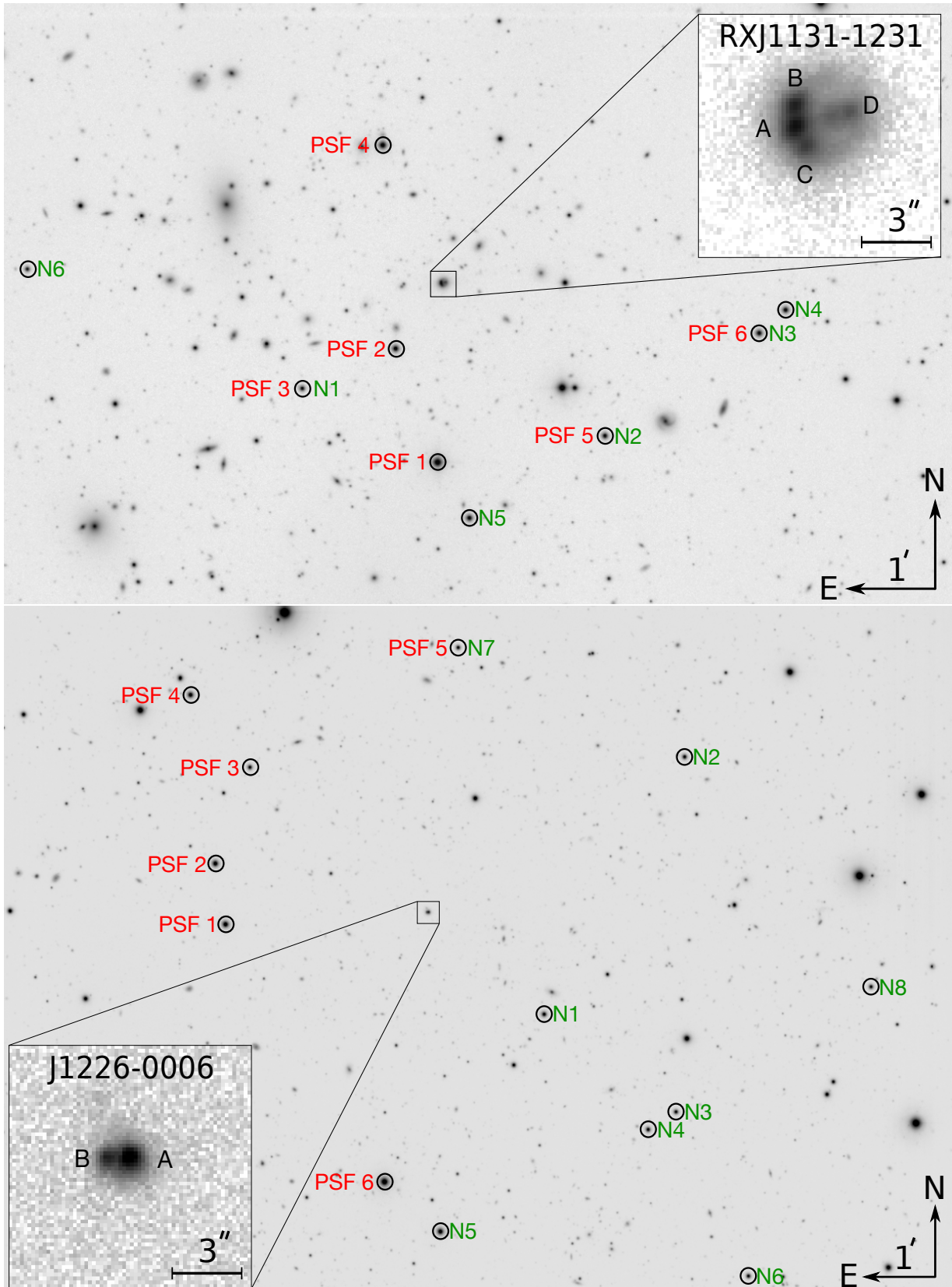
**Notes.** Measurements for each epoch consist in most cases of 5 dithered exposures in the *R* filter.

by observing nights to produce the light curves along with their photometric  $1\sigma$  uncertainties. Depending on telescopes and sites there are between three and six individual frames per epoch to compute the photometric uncertainties.

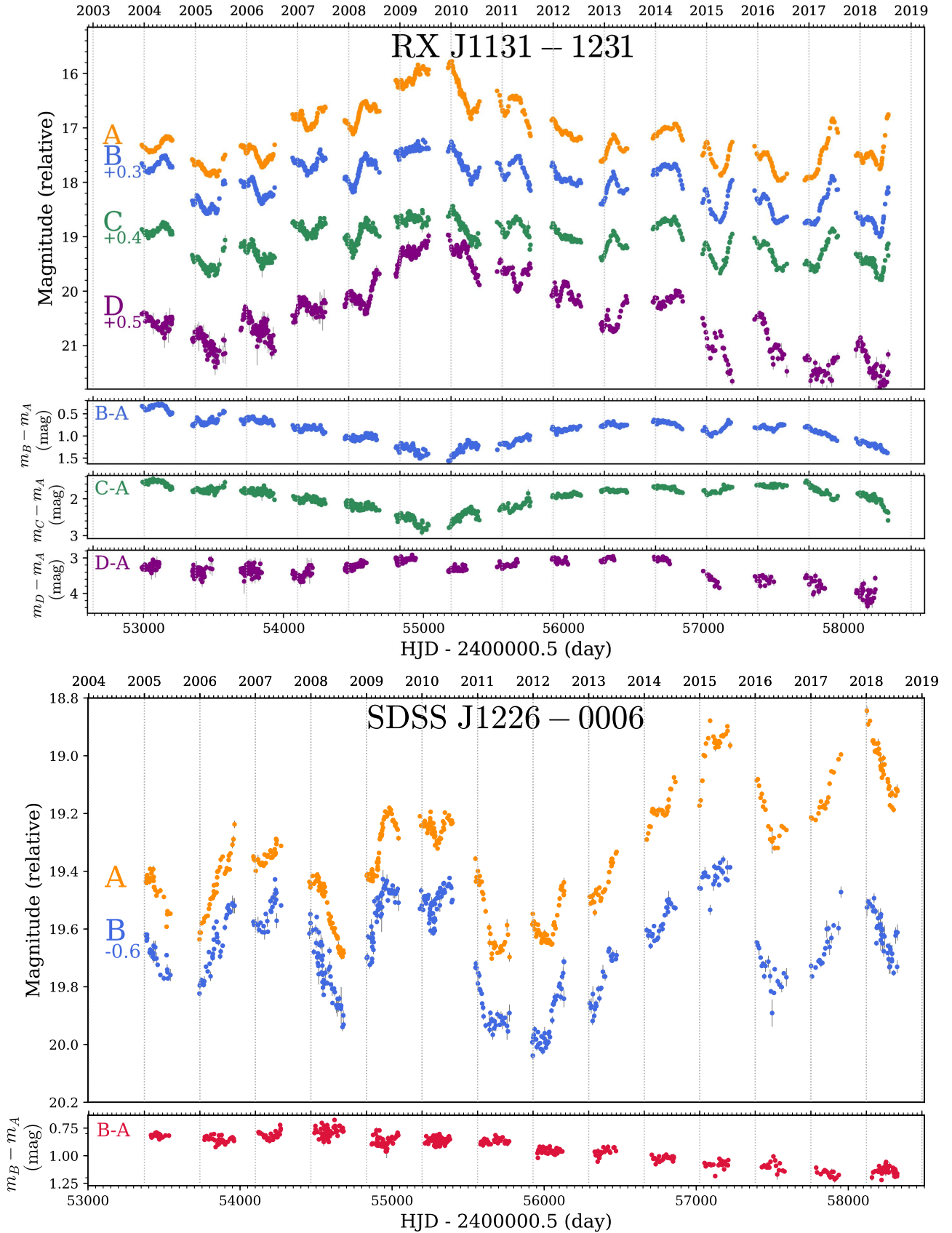
We illustrate the result of this process in Fig. 2, showing the COSMOGRAIL light curves<sup>2</sup> for two objects with prominent variability: RX J1131–1231 and SDSS J1226–0006. The light curves for 21 other lensed QSOs are shown in Appendix B (Fig. B.1). In some cases, the separation between two quasar images is too small and there can be flux leaking between images despite the deconvolution scheme. This typically

happens when the image separation is below  $0''75$ . In such cases, we sum the fluxes of the two affected images. This is the case for HE 0230–2130 where we show the total flux of *A* + *B*, for SDSS J0924+0219, where we show *A* + *D* (as in MacLeod et al. 2015), and for WFIJ2026–4536, where we show *A*1 + *A*2. These three objects are in a fold configuration each featuring a narrow pair of bright images. Since these images reside almost at the same place in the arrival-time surface, they are expected to be delayed by the same amount, thus having a roughly zero delay between them (Bonvin et al. 2019). Hence, our delays given for pairs rather than for resolved images are unlikely to be biased at a level larger than a one day. We note, however, that such pairs with short or zero delay may turn out useful to test the

<sup>2</sup> All light curves are publicly available at [www.cosmograil.org](http://www.cosmograil.org).



**Fig. 1.** Part of the fields of view of RXJ1131–1231 (*top*) and SDSS J1226–0006 (*bottom*) as seen by the *Leonhard Euler* 1.2 m Swiss telescope at La Silla Observatory. A total of 195 (388) frames with seeing  $<1.25$  (1.4) and PSF ellipticity  $<0.15$  (0.18) are stacked to produce the deep field image for RXJ1131–1231 (SDSS J1226–0006). The insert shows a single exposure of 360 s in *R* band. The stars used for the PSF construction are labelled PSF<sub>*i*</sub>, in red, and the reference stars used for flux normalisation are labelled in green, *N<sub>j</sub>*. The field of view for the other lensed quasars are presented in Appendix A (Fig. A.1).



**Fig. 2.** Full COSMOGRAIL  $R$ -band light curves for RX J1131-1231 and SDSS J1226-0006, as also summarised in Table 1. The bottom panels for each object show the difference curves between pairs of multiple images, shifted by the corresponding measured delay and interpolated with the intrinsic spline model fitted to the data (see Sect. 3). Light curves for all the other lensed quasars presented in this paper are shown in Appendix B (Fig. B.1).

microlensing time-delay hypothesis by Tie & Kochanek (2018): if a significant delay (days) is measured between narrow pairs, it may be entirely due to microlensing time delay. In at least one case where resolved photometry was possible (Bonvin et al. 2019), there is no measurable trace of such microlensing time delay, although its presence cannot be excluded.

## 2.2. Additional data

In addition to the *Euler* light curves, we complement our data set with photometric monitoring data publicly available in the literature. For SDSS J1515+1511, we added the data taken at the Liverpool Telescope published in Shalyapin & Goicoechea (2017). We also include data taken at the SMARTS 1.3 m telescope with the ANDICAM optical and infrared camera for the lensed quasars SDSS J0924+0219 and QJ0158–4325 (MacLeod et al. 2015; Morgan et al. 2012). In addition, we made use of the COSMOGRAIL data of HE 0435–1223 and RXJ1131–1231 taken at the 1.5m telescope at the Maidanak Observatory, Uzbekistan, at the *Mercator* Belgian telescope at Roque de Los Muchachos Observatory in La Palma, Canary Islands and at the SMARTS 1.3 m telescope at Cerro Tololo Inter-American Observatory, Chile, previously published in Courbin et al. (2011) and Tewes et al. (2013a). When a lens system was monitored by several instruments, we either analyse the data sets separately or we merge the light curves and perform the analysis on the merged data set (see Sect. 3.4 for details). In the latest case and when the monitoring campaigns do overlap, we fitted a flux and magnitude correction to the data to compensate for slight photometric offsets caused by differences in the filter and detector responses, coupled with differences in the spectral energy distribution of the quasar and reference stars. When the monitoring campaigns do not overlap, we simply adjust the magnitude zero-point in order to obtain a reasonable match between the light curves.

## 3. Time-delay measurements

A broad range of curve-shifting algorithms have been developed in the past to measure time delays between light curves (e.g. Press et al. 1992; Pelt et al. 1994; Kelly et al. 2009; Hirv et al. 2011; Hojjati et al. 2013; Hojjati & Linder 2014; Aghamousa & Shafieloo 2015). Efficient algorithms must be robust against photometric noise, coarse temporal sampling, season gaps and must also take into account the presence of microlensing caused by moving stars in the lensing galaxy. Microlensing variations affect the observed flux independently in each quasar image. For this reason they are often referred to as extrinsic variation, as opposed to the intrinsic quasar variations shared by all quasar images.

To test the robustness of curve-shifting algorithms, realistic light curves containing microlensing were simulated and proposed for a blind analysis to the community (Dobler et al. 2015, Time-Delay Challenge; hereafter TDC). The curve-shifting methods adopted in COSMOGRAIL make use of the “free-knot spline” estimator (see Tewes et al. 2013b, for an in-depth presentation) and the regression-difference estimator as well as the uncertainty estimation scheme from the PyCS toolbox<sup>3</sup>. Both methods performed very well in term of precision and accuracy on the TDC data (Liao et al. 2015; Bonvin et al. 2016), however, with a better performance of the former over the latter. These two

methods are the basis of most current time-delay cosmography work, for example, by the HOLiCOW team.

In this work, we used the two different time-delay estimators implemented in PyCS. As these estimators provide “point estimates” of the time delays, the uncertainties must be evaluated with realistic simulated light curves that mimic both the intrinsic and extrinsic variations in the lensed images, which we detail below.

### 3.1. The PyCS package

The PyCS package proposes a fully data driven approach for time-delay measurements in the presence of microlensing. The variations of the quasar are directly derived from the data either using Gaussian processes or free-knot spline. Although there is no physical model behind the algorithms in PyCS, a number of parameters are still required to model the quasar and microlensing variability. These cannot be explored in a fully Bayesian way due to the very large amount of computational time that such an approach would require. The same would hold true if we had chosen a physical model for microlensing, with the additional drawback that a wrong choice of a physical model may lead to biased measurements. We therefore propose a semi-Bayesian approach where we marginalise over a pre-selected grid of parameters to keep the computational time manageable on a small scale computing cluster. In previous COSMOGRAIL publications, external choices of parameter values were included as a robustness test. This procedure is now automatised to systematically explore broader parameter ranges. The full procedure is described in the following.

In this work, we adopt the same terminology as in Bonvin et al. (2018). For clarity, we recall here several definitions:

- A *curve-shifting technique* is a procedure that takes the monitoring data as inputs and results in a time-delay estimate along with associated uncertainties,
- An *estimator* is an algorithm that returns the optimal time-delay between two light curves,
- The *estimator parameters* control the behaviour of the estimator (e.g. its convergence, number of degrees of freedom, etc.),
- A *generative model* is used to create simulated light curves that mimic the data and to evaluate the uncertainties on the time delays provided by the estimator.

We also recall the following terms to describe how we define and handle the different data sets, consistently with Bonvin et al. (2018):

- A *data set*,  $\mathbf{D}$ , usually corresponds to a monitoring campaign conducted with one instrument. In the present work this is ECAM, C2, SMARTS or Liverpool in one single filter. We also sometimes concatenate the light curves coming from several instruments in one single data set. For example, the joint ECAM+C2 light curves are referred to as the *Euler* data set.
- A *time-delay estimate*,  $\mathbf{E} = \Delta t_{-\delta t_-}^{+\delta t_+}$ , is composed of a point estimate with an uncertainty estimate of the time delay between two light curves. It corresponds to one particular choice of estimator and associated set of parameters.
- A *group* of time-delay estimates,  $\mathbf{G} = [\mathbf{E}_{AB}, \mathbf{E}_{AC}, \mathbf{E}_{BC}]$ , is a set of time-delay estimates between all pairs of light curves for a particular lensed system, obtained using the same curve-shifting technique. A group corresponds to the

<sup>3</sup> PyCS can be downloaded from the COSMOGRAIL website [www.cosmograil.org](http://www.cosmograil.org)

**Table 2.** Set of parameters used for the free-knot spline estimator and the regression difference estimator, for different data sets.

		Free-knot splines		Regression difference				
		$\eta$	$\nu$	Set 1	Set 2	Set 3	Set 4	Set 5
ECAM		25, 35, 45, 55	A	1.7	2.2	1.5	1.3	1.7
			scale	0.5	0.4	0.4	0.2	0.3
	$\eta_{ml}$	150, 300, 450, 600	errscale	200	200	200	200	200
			kernel	20	25	20	5	5
				Matérn	Matérn	Matérn	Matérn	Pow. Exp.
		$\eta$	$\nu$	Set 1	Set 2	Set 3	Set 4	Set 5
C2 and SMARTS		25, 35, 45, 55	A	2.2	1.8	1.9	1.3	1.7
			scale	0.5	0.7	0.6	0.3	0.7
	$\eta_{ml}$	150, 300, 450, 600	errscale	200	200	200	150	300
			kernel	25	25	20	10	25
				Matérn	Matérn	Matérn	Matérn	Pow. Exp.

**Notes.** These parameters are described in Sect. 3.1.

output of the pipeline presented in Sect. 3.2 below for a given estimator, set of estimator parameters and generative model.

- A series of time-delay estimates,  $\mathbf{S} = [\mathbf{G}_1, \dots, \mathbf{G}_i, \dots, \mathbf{G}_N]$ , for  $i \in N$  is an ensemble of groups of time-delay estimates. They typically share the same data set and estimator but make use of different set of estimator parameters.

The two estimators used in this work are introduced in the next two sections.

### 3.1.1. Free-knot spline estimator

The free-knot spline estimator models light curves as analytical spline functions. More precisely, we consider one unique free-knot spline for the intrinsic variations of the quasar, which is fitted simultaneously on all light curves, plus independent splines fitted individually on each light curve to model the extrinsic (microlensing) variations. The position of the knots of both the intrinsic and extrinsic splines as well as the time delays between light curves are optimised simultaneously.

The parameters of the free-knot spline estimator are the initial spacing between the knots of the intrinsic spline,  $\eta$ , and of the extrinsic splines,  $\eta_{ml}$ . These parameters control the flexibility, that is, the number of degrees of freedom, of the intrinsic and extrinsic splines. If the initial spacing is too large, fast variations are missed and the precision and accuracy of the method is affected. A too small initial spacing between knots leads to an over-fitting of the data, also affecting the results. The choice of  $\eta$  and  $\eta_{ml}$  must therefore be adapted to the data quality, which mainly depends on the cadence and photometric noise. The range of parameters used in this work for the different data sets are described in Table 2. We choose  $\eta_{ml}$  being larger than  $\eta$  as the microlensing variation typically occurs on longer time-scales than the intrinsic quasar variation. This is supported by the data themselves: taking the flux ratio between pairs of images, after correction by the time delay, leads to fairly smooth and long-term variations over several years as seen, for example, in the lower panels of Fig. 2, while intrinsic quasar variations are of the order of a few weeks to months as seen in the upper panels of the same figures.

### 3.1.2. Regression difference estimator

In the regression difference method, a Gaussian process regression is performed on each quasar image light curve

independently. The regressions are then shifted in time and subtracted pair-wise, resulting in one difference curve for each pair of light curves and its associated uncertainties envelope. The algorithm minimises the variability of the difference curves by varying the time shift.

The estimator parameters are the covariance function of the Gaussian process, its smoothness degree,  $\nu$ , its amplitude, A, its characteristic time scale, scale, and an additional scaling factor for the photometric uncertainties, errscale (see Tewes et al. 2013b, for more details). We use several combinations of these parameters which are summarised in Table 2.

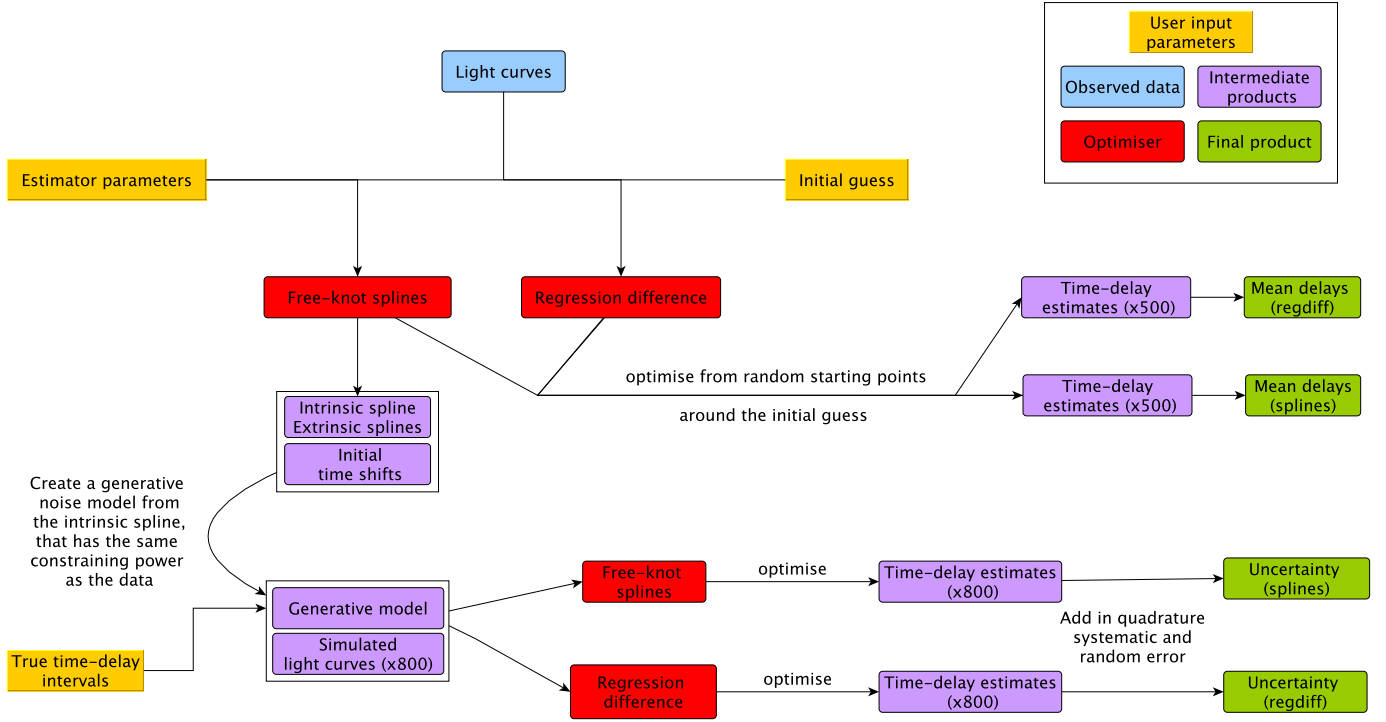
### 3.2. Measurement pipeline

In the present work, we develop an extension of PyCS to handle a large number of different data sets in a homogeneous and automated way. We extend the procedure described in Bonvin et al. (2018) to check the robustness of the two estimators against the choice of parameters. A schematic description of the procedure is presented in Fig. 3, leading to a time-delay measurement along with its associated  $1\sigma$  uncertainties. We perform the following steps:

- We visually inspect the light curves in order to estimate a first guess for the time delays. To do this, we use the publicly available web application D3CS<sup>4</sup> (Bonvin et al. 2016).
- We use this first guess as a starting point for the free-knot spline estimator. For a given set of parameters, we then obtain the optimised intrinsic and extrinsic splines. This also provides us point estimates of the time delays and with residuals of the fit.
- We build a generative model using the spline fit resulting from the previous step. We then generate simulated light curves from the optimised intrinsic splines by randomizing the “true” time delay applied to each individual curve, following the procedure described by Tewes et al. (2013b) and we add noise. In previous works, this step was achieved by adding correlated and Gaussian noise in order to account, at the same time, for the residual extrinsic variability that is not included in the “microlensing” spline and for the shot-noise respectively. This required manually fine-tuning the noise power spectrum. We now use an automated

<sup>4</sup> All COSMOGRAIL light curves can be inspected with this interactive tool at [https://obswww.unige.ch/~millon/d3cs/COSMOGRAIL\\_public/](https://obswww.unige.ch/~millon/d3cs/COSMOGRAIL_public/)





**Fig. 3.** Sketch for the PyCS time-delay measurement pipeline. This procedure is repeated for each set of estimator parameters. The combination of the final products for each set of estimator parameters is discussed in Sect. 3.3.

way of generating simulated light curves by estimating the power spectrum of the residuals. In this new approach, we directly generate the noise of the simulated light curves from the measured power spectrum with randomised phases in Fourier space. This procedure results in simulated light curves with the same statistical noise properties, as presented in (vi).

- (iv) We run the estimators from 500 different random starting points around the guess delay to estimate the intrinsic error of the estimator, which is an indication of its robustness (see [Tewes et al. 2013b](#)). The median time delays for each pair of light curves is our final point estimates for each estimator, that is, either the free-knot spline or the regression difference.
- (v) To estimate the uncertainties associated for the two estimators, we sample 800 simulated light curves from the generative model computed at step (iii) with different time delays and apply the estimator on them. These *true* time delays are chosen in the range of  $\pm 20$  days around the median delay obtained in (iv) and allows us to test whether our results depend on our choice of true time delays. For some noisy light curves, we extend this range not to be limited by this prior. We obtain the uncertainty of our estimator in an empirical way by combining in quadrature the random and systematic part of the uncertainties.
- (vi) Finally, we ensure that the statistics of the residuals on the simulated curves fit matches the one from the data. To do so, we compute two statistics on the residuals resulting from the free-knot spline fit, following the procedure described in [Tewes et al. \(2013b\)](#). We expect that the residuals exhibit the same standard deviation  $\sigma$  and the same normalised number of runs,  $z_r$  (as defined below). A *run* corresponds to a sequence of adjacent residuals that are all either positive or negative. For truly independent residuals, we expect that the distribution of the runs (either positive or

negative) is normally distributed with a mean and variance following:

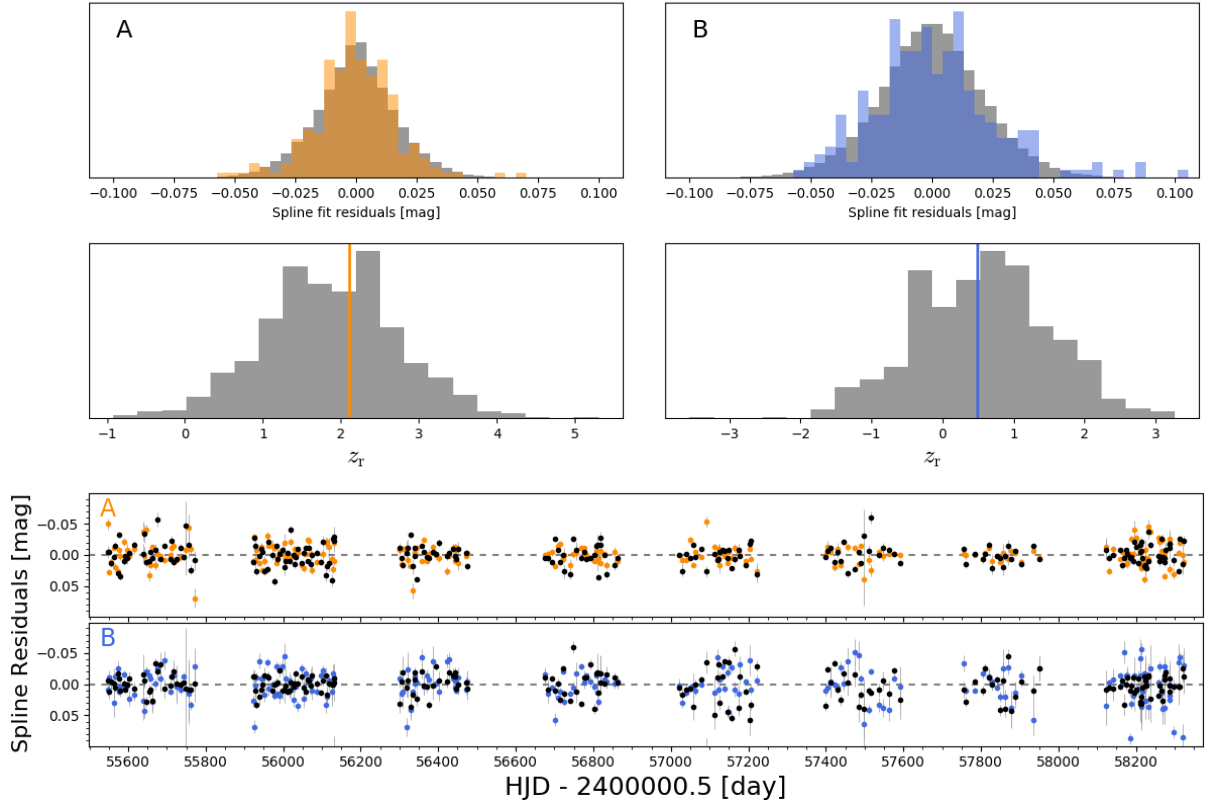
$$\mu_r = \frac{2N_+N_-}{N} + 1 \text{ and } \sigma_r^2 = \frac{(\mu_r - 1)(\mu_r - 2)}{N - 1}, \quad (1)$$

where  $N_+$  and  $N_-$  are the number of positive and negative residuals, and  $N$  is the total number of data points. The normalised number of runs  $z_r$  is given by:

$$z_r = \frac{r - \mu_r}{\sigma_r}, \quad (2)$$

where  $r$  is the measured number of runs. Deviations of  $z_r$  from 0 indicates that the residuals are correlated (negative  $z_r$ ) or anti-correlated (positive  $z_r$ ). We assess that this statistic computed for the simulated light curves distributes well around the value computed on the real data. This ensures that the simulated light curves and the real data have the same constraining power. In Fig. 4, the distribution of the two relevant statistics,  $\sigma$  and  $z_r$ , are shown for SDSS J1226–0006, with the same set of parameters as used for the fit in Fig. 5. If the two statistics computed on the real and simulated data do not agree within  $0.5\sigma$ , we iteratively adapt the spectral window used for the generative model at step (iii).

We systematically apply this procedure for the sets of estimator parameters described in Table 2. For the free-knot spline technique we adopt a mean spacing between the knots  $\eta$  of 25, 35, 45 and 55 days for the intrinsic spline and of  $\eta_{ml} = 150, 300, 450$  and 600 days for the extrinsic splines. Combining all possible combinations of  $\eta$  and  $\eta_{ml}$ , we obtain 16 different sets of parameters. We slightly adapt this grid of parameters for shorter light curves since the mean knot separation cannot exceed the duration of the monitoring campaign. For the regression difference technique, we explored five different sets of parameters to



**Fig. 4.** *Top:* distribution of the free-knot spline fit residuals for model parameter  $\eta = 45$  days,  $\eta_{ml} = 300$  days in the ECAM light curves of SDSS J1226–0006. The orange and blue histograms represent the distributions of data residuals whereas the grey histogram corresponds to the distribution of the residuals for the 800 synthetic light curves created using the generative model. *Middle panels:* normalised number of runs  $z_r$  for the synthetic curves (grey histogram) and for the data (orange and blue vertical lines). *Bottom panels:* residuals for the free-knot spline fit to the data, shown in blue and orange for images A and B, respectively. One example of the typical residuals obtained on applying the free-knot spline curve shifting technique on a simulated light curve is shown in black. Residuals are statistically similar to the observed data in terms of dispersion of the residuals,  $\sigma$ , and normalised number of runs,  $z_r$  (Eq. (2)).

test the robustness of the estimator against changes in the properties of the Gaussian process used to fit the data.

### 3.3. Combining the time-delay estimates

The pipeline presented here aims at systematically testing the robustness of the measurement against different assumptions for the variability of the quasar and of the extrinsic components, which are controlled by the estimator parameters. We decide not to optimise on the estimator parameters since we aim to marginalise over the various plausible microlensing models in our final time-delay uncertainties. On the other hand, marginalising over all estimator parameters is not optimal either because estimator parameters that are not necessarily well-suited to represent the data would be accounted for in the final estimate and this would degrade its precision.

Instead, we adopt an hybrid approach between marginalisation and optimisation, as described in Bonvin et al. (2018, 2019). Among all the groups of time-delay estimates computed for various estimator parameters, we first select the most precise one as our reference group. We then compute the “tension” between the reference group and all the other groups. The tension between two time-delay estimates  $\mathbf{E}_A = A_{-a_-}^{+a_+}$  and  $\mathbf{E}_B = B_{-b_-}^{+b_+}$  with  $A > B$ , in units of  $\sigma$  is defined as (Bonvin et al. 2018):

$$\tau(\mathbf{E}_A, \mathbf{E}_B) = (A - B) / \sqrt{a_-^2 + b_+^2}. \quad (3)$$

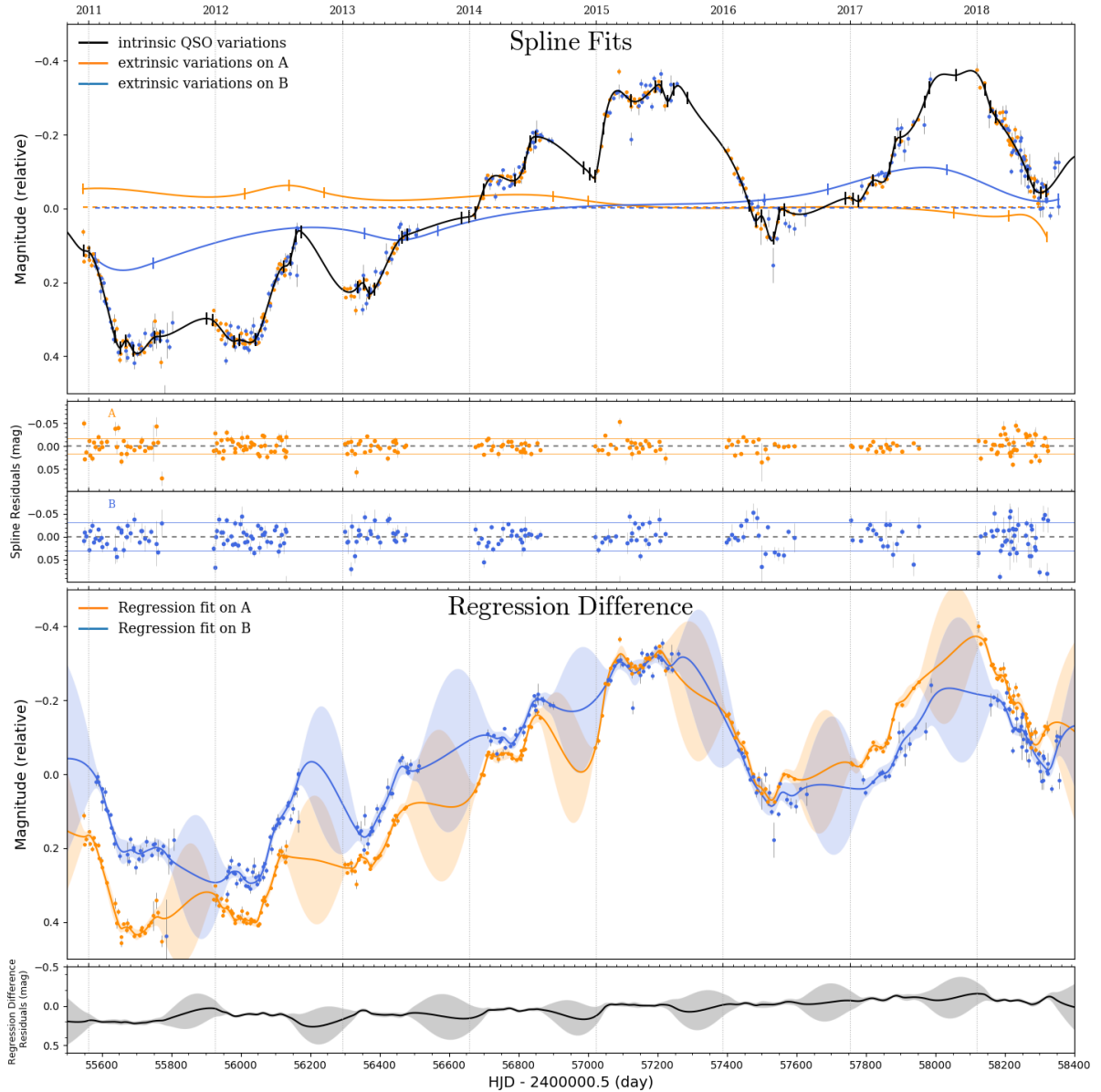
We also define the tension between two groups  $\mathbf{G}_1$  and  $\mathbf{G}_2$  as the maximum tension between the time-delay estimates from corresponding pairs of light curves :

$$\tau(\mathbf{G}_1, \mathbf{G}_2) = \max_j (\tau(\mathbf{E}_{1,j}, \mathbf{E}_{2,j})). \quad (4)$$

We marginalise only if the tension  $\tau$  between the reference group and the other groups,  $\sigma$ , exceeds a threshold of  $\tau_{\text{thresh}} = 0.5$ . If this is the case, we select the most precise group among those whose tension exceeds  $\tau_{\text{thresh}}$  and combine it with the reference. This combination becomes the new reference group and we repeat this process until no more groups are in a tension that exceeds  $\tau_{\text{thresh}}$  with the reference. We note that in this approach, choosing  $\tau_{\text{thresh}} = 0$  corresponds to a proper marginalisation over all the groups whereas choosing  $\tau_{\text{thresh}} \sim \infty$  is equivalent to selecting only the most precise group.

For each estimator, we obtain a series of time-delay estimates, which is composed of several groups that share the same data set but contain different combinations of the estimator parameters. We combine the groups within a series according to the procedure described above. Figure 6 illustrates each group’s result, and compares them with the combined estimate for the free-knot spline and regression difference estimator in the case of SDSS J1226–0006.

After combining the groups in both series, we typically obtain two groups of time-delay estimates, one for each estimators. As the two estimators are applied on the same data set, they cannot be considered as independent. We therefore



**Fig. 5.** *Top panel:* spline fit of the ECAM data of SDSS J1226–0006. The black line represents the intrinsic variation shared by both curves ( $\eta = 45$  days) whereas the blue and orange lines model the extrinsic variations of A and B, respectively ( $\eta_{ml} = 300$  days). The curves are shifted in time by the optimal time delay, and corrected from their modelled extrinsic variations. *Middle panel:* residuals of the spline fit. *Bottom panel:* regression fits using Gaussian processes and their  $1\sigma$  envelopes. The difference curve between the regression curves fitted on image A and image B is also shown in black. The algorithm is optimising the time shift in order to minimise the variability in the difference curve.

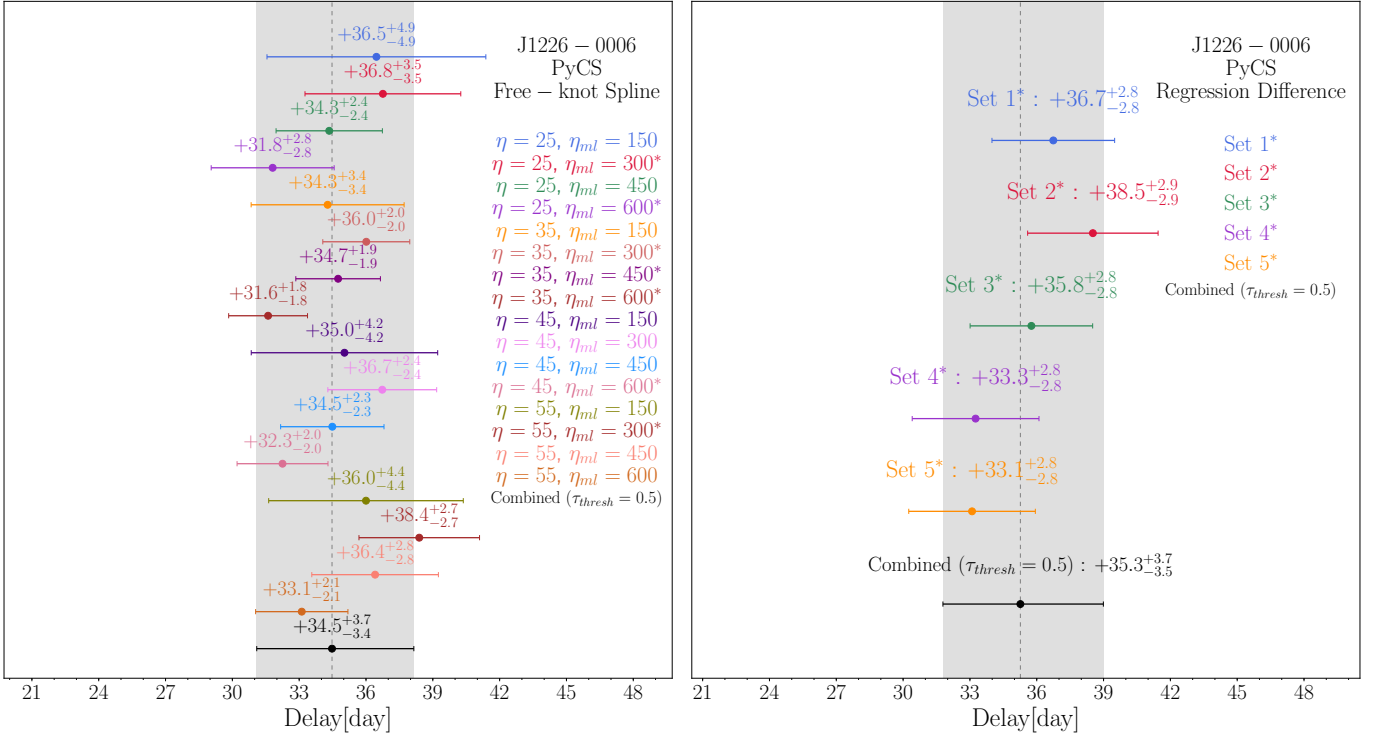
marginalise over the free-knot spline and regression difference techniques, resulting in our final time-delay estimates for a particular data set. Figure 7 illustrates this process in the case of SDSS J1226–0006.

### 3.4. Combining data sets

The last step consists in combining the data sets when several instruments were used to monitor the same target. When the data quality is not sufficient to obtain reliable time-delay estimates with one single data set, we prefer to merge the light curves taken from different instruments and run the full analysis on the joint data set. This typically occurs when one of the monitoring campaign does not contain enough well-defined sharp features in the light curves to constrain the time delay. Many factors can explain these failures, for example when the time delay is long

compared with the length of the observing season and limits the overlap between the useful parts of the light curves, or due to low variability of the quasar, photometric noise or limited sampling.

If the data quality is sufficient, that is, if there are enough well-defined inflection points that can be identified in all the light curves, we apply the measurement pipeline on each individual data set and then combine the resulting time-delay measurements. The most conservative way to combine different data sets consists in marginalizing over the different data sets, which is a valid approach in the case of overlapping monitoring campaigns. In this case, the measurements can be affected by the same systematic bias due to microlensing or to microlensing time delay and are therefore not independent. We call the final time-delay estimate obtained after marginalisation over the data sets PyCS-sum, as it effectively results from the sum of the individual groups. The second option consists in multiplying the groups



**Fig. 6.** Illustration of how we combine groups of time-delay estimates in a series on the ECAM data set for the lensed quasar SDSS J1226–0006. *Left panel:* series of time-delay estimates obtained for the free-knot spline technique. Each time-delay estimate presented on the plot corresponds to a particular choice of estimator parameters for the mean spacing between the knots of the intrinsic spline  $\eta$ , and of the extrinsic splines  $\eta_{ml}$ . The combined estimate is shown both in black at the bottom of the panel and in a grey shaded band, to visually ease the comparison with individual estimates and it corresponds to the combination described in Sect. 3.3 with  $\tau_{\text{thresh}} = 0.5$ . The estimates used to produce this combination are marked with \*. *Right panel:* series of time-delay estimates obtained with the regression difference technique. The sets of parameter are detailed in Table 2.

of the individual data set, making the assumption that they do not share unaccounted systematics and that they are therefore independent measurements of the same quantity, which is the case when considering non-overlapping monitoring campaigns like the C2 and ECAM data sets. We call this the PyCS-mult result. As an example, we show in Fig. 8 the combination of the ECAM and C2 time-delay estimates for SDSS J1226–0006, for which both the PyCS-mult and PyCS-sum results are shown.

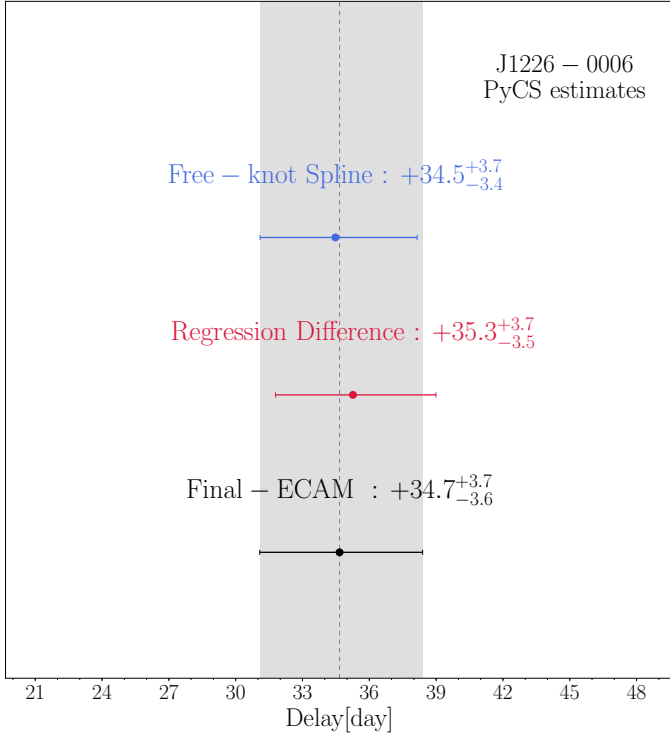
As the microlensing time delay (Tie & Kochanek 2018) could potentially affect our measurements, making the observed time delay variable over a time scale similar to the microlensing time scale (i.e. from several months to several years) one should explicitly account for this effect as it was done in Bonvin et al. (2018). This is beyond the scope of this paper as including microlensing time delay is usually done at the same time the measured time delay are incorporated in the mass model of the lens (e.g. Rusu et al. 2020; Chen et al. 2018, 2019). However, there is so far no evidence for our time-delay measurements being significantly time variable in the data. For example, the time-delay values we obtain when splitting our data in several chunks do not change more than the expected uncertainties (e.g. Tewes et al. 2013a; Bonvin et al. 2017) and we also do not measure any significant time delay between resolved narrow blends of images that have zero predicted cosmological (i.e. from macro model of the lens) time delay (e.g. Bonvin et al. 2019). Future work may show or not if the microlensing time delay becomes significant when the precision of the data improve, for example, with high cadence monitoring (Courbin et al. 2018).

## 4. Notes on individual objects

The new automated PyCS pipeline was applied to 18 lensed quasars, for which the data quality was sufficient to obtain robust time delays. As each object has its own specificities such as the duration of the monitoring campaigns, the mean sampling of the light curves, the instrument used, etc., we detail below the results for individual objects and give our best time-delay values along with the associated  $1\sigma$  uncertainties. In giving our results for a pair of images *A* and *B*, a negative value of  $\Delta t_{AB}$  means that the information is visible first in image *A*. Conversely, a positive time delay  $\Delta t_{AB}$  means that *B* is the leading image. All time delays measured in this paper, along with previously published time delays available in the literature are summarised in Table 3 and Fig. 9. We list here only the system where the background quasar is lensed by a single galaxy and not by a cluster or a group of galaxies. When comparing the uncertainties measured in this work with previous time delays estimates published in the literature, we recall that the modelling of the microlensing is extensively tested here, which was not always the case in previous works. For quadruply imaged systems and when several independent time delays are measured, the relative precision that we quote on Fig. 9 corresponds to the combination of the independent time-delay estimates. This corresponds to the minimum relative uncertainty that is achievable on  $H_0$ .

### 4.1. HE 0047–1756

HE 0047–1756 is a doubly imaged quasar at redshift  $z_{\text{source}} = 1.678$  with the lens galaxy at redshift  $z_{\text{lens}} = 0.407$



**Fig. 7.** Final time-delay estimate for the regression difference and free-knot spline estimator. The marginalisation over these two estimates yields our final time-delay estimate for the ECAM data set, shown in a shaded grey band.

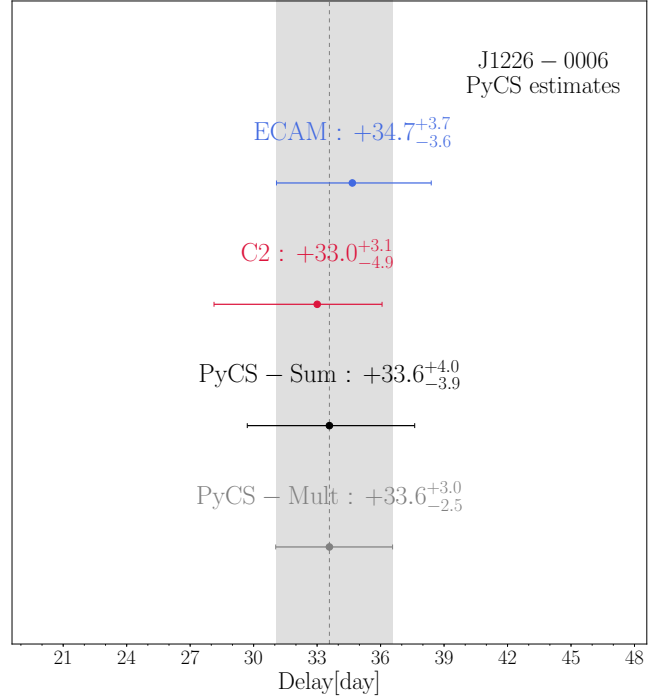
(Wisotzki et al. 2004; Eigenbrod et al. 2006; Sluse et al. 2012). Time delays were previously measured by Giannini et al. (2017) who found  $\Delta t_{AB} = -7.6 \pm 1.8$  days with five seasons of monitoring at the 1.54 m Danish telescope at the ESO La Silla observatory. With the ECAM and C2 data at *Euler*, we find  $\Delta t_{AB} = -9.5^{+3.9}_{-4.0}$  days and  $\Delta t_{AB} = -12.8^{+8.3}_{-8.3}$  days respectively. Combining our two *Euler* measurements, our final PyCS-mult estimate is  $\Delta t_{AB} = -10.4^{+3.5}_{-3.5}$  days.

#### 4.2. UM 673 (Q0142–100)

UM 673 (Q0142–100) is a doubly imaged quasar at redshift  $z_{\text{source}} = 2.73$  discovered by Surdej et al. (1987) with a lens galaxy at redshift  $z_{\text{lens}} = 0.491$  (Eigenbrod et al. 2007). The time delay was first measured by Koptelova et al. (2012) from ten seasons of monitoring at the 1.5 m telescope of Maidanak observatory. The authors obtained  $\Delta t_{AB} = -95^{+5+14}_{-16-29}$  days (68 and 95% confidence interval). Oscoz et al. (2013) also found  $\Delta t_{AB} = -72 \pm 22$  days from 12 years of observation at the Teide Observatory. Our measurement is compatible with previous estimate but yield larger  $1\sigma$  uncertainties than the value of Koptelova et al. (2012) as our analysis explicitly includes several microlensing models, which were not accounted for in previous studies. We find  $\Delta t_{AB} = -97.7^{+16.1}_{-15.5}$  days, but we note that there is weak evidence for another value around  $\Delta t_{AB} = -200$  days.

#### 4.3. QJ0158–4325

The doubly imaged QSO, QJ0158–4325, at redshift  $z_{\text{source}} = 1.29$ , also known as CTQ 414, was discovered by Morgan et al. (1999) during the Calán-Tololo Quasar survey. Faure et al. (2009) measured a tentative lens redshift of  $z_{\text{lens}} = 0.317$ . A



**Fig. 8.** Example of combination of ECAM and C2 data sets for SDSS J1226–0006. The PyCS-sum estimate corresponds to the marginalisation over the two data sets. The PyCS-mult assumes that the two data sets are independent and corresponds to the multiplication of the probability distributions for the two methods.

model of the lens was also proposed in this work and a truncated pseudo-isothermal elliptical mass distribution (TPIEMD) was favoured by the data. Under these assumptions, the predicted time delay between images *A* and *B* was around  $\Delta t_{AB} = -14$  days. In their microlensing analysis, Morgan et al. (2008) failed to measure the time delay but successfully estimated the accretion disc size. Morgan et al. (2012) added four new seasons to the previous analysis and predicted a delay  $\Delta t_{AB} = -12.4$  days using a singular isothermal sphere (SIS) as a lens model and flat- $\Lambda$ CDM cosmology with  $h = 0.7$ ,  $\Omega_M = 0.3$  and  $\Omega_\Lambda = 0.7$ . The simultaneous microlensing and time-delay analysis also favoured a negative *AB* delay (i.e. *A* leads *B*).

In this work we add seven seasons of monitoring to the data set published in Morgan et al. (2012). Significant variations of the quasar after 2011 allows us to constrain the time delay to  $\Delta t_{AB} = -22.5^{+3.5}_{-4.1}$  days from the joint ECAM and C2 data set (*Euler* set). We attempt to measure the time delay independently on the ECAM and C2 data set, but the C2 light curve quality is insufficient. We also re-analyse the SMARTS data from Morgan et al. (2012) and obtain  $\Delta t_{AB} = -22.3^{+9.5}_{-8.0}$  days, in excellent agreement with the *Euler* estimate. Combining these two estimates, we find  $\Delta t_{AB} = -22.7^{+3.6}_{-3.6}$  days.

This object is significantly affected by microlensing, with microlensing variations of about one magnitude over the 13 years of monitoring, as can be seen on the top panel of Fig. B.1. The difference light curve exhibits strong short-timescale microlensing variations in the five first seasons of monitoring in addition to the long term trend.

#### 4.4. HE 0230–2130

HE 0230–2130 is a quadruply imaged quasar at  $z_{\text{source}} = 2.162$  discovered by Wisotzki et al. (1999). The redshift of the lens

**Table 3.** Summary of the quasar lensed by a single galaxy with known time delays.

Lenses	Time-delays [Day]	Comments
HE 0047–1756	$\Delta t_{AB} = -10.4^{+3.5}_{-3.0}$	PyCS–mult C2-ECAM
UM 673 (Q 0142–100)	$\Delta t_{AB} = -97.7^{+16.1}_{-15.5}$	From joint C2+ECAM light curves (uncertain)
Q J0158–4325	$\Delta t_{AB} = -22.7^{+3.6}_{-3.6}$	PyCS–mult C2-SMARTS-ECAM
HE 0230–2130	$\Delta t_{A'C} = 15.7^{+4.2}_{-3.6}$	PyCS–mult C2-ECAM
SDSS J0246–0825	$\Delta t_{AB} = 0.8^{+5.0}_{-5.2}$	From joint C2-ECAM light curves
HE 0435–1223	$\Delta t_{AB} = -9.0^{+0.8}_{-0.8}$ $\Delta t_{AC} = -0.8^{+0.8}_{-0.7}$ $\Delta t_{AD} = -13.8^{+0.8}_{-0.8}$ $\Delta t_{BC} = 7.8^{+0.9}_{-0.9}$ $\Delta t_{BD} = -5.4^{+0.9}_{-0.8}$ $\Delta t_{CD} = -13.2^{+0.8}_{-0.8}$	PyCS–mult C11-ECAM
HS 0818+1227	$\Delta t_{AB} = -153.8^{+13.2}_{-14.6}$	From joint C2-ECAM light curves (uncertain)
SDSS J0832+0404	$\Delta t_{AB} = -125.3^{+12.8}_{-13.4}$	From ECAM light curves (uncertain)
SDSS J0924+0219	$\Delta t_{A'B} = 2.4^{+3.8}_{-3.8}$	PyCS–mult Euler-SMARTS
RX J1131–1231	$\Delta t_{AB} = 1.6^{+0.7}_{-0.7}$ $\Delta t_{AC} = -1.0^{+1.2}_{-1.2}$ $\Delta t_{AD} = -92.5^{+1.9}_{-1.8}$ $\Delta t_{BC} = -2.0^{+1.4}_{-1.3}$ $\Delta t_{BD} = -93.7^{+2.0}_{-2.0}$ $\Delta t_{CD} = -91.8^{+2.2}_{-2.3}$	PyCS–mult T13-ECAM
SDSS J1226–0006	$\Delta t_{AB} = 33.7^{+2.7}_{-2.7}$	PyCS–mult C2-ECAM
SDSS J1335+0118	$\Delta t_{AB} = -56.0^{+5.7}_{-6.1}$	PyCS–mult C2-ECAM
Q 1355–2257	$\Delta t_{AB} = -81.5^{+10.8}_{-12.0}$	From joint C2+ECAM light curves (uncertain)
SDSS J1455+1447	$\Delta t_{AB} = -47.2^{+7.5}_{-7.8}$	From ECAM light-curve
SDSS J1515+1511	$\Delta t_{AB} = -210.2^{+2.7}_{-2.7}$	From joint ECAM+Liverpool light curves
SDSS J1620+1203	$\Delta t_{AB} = -171.5^{+8.7}_{-8.7}$	From joint C2+ECAM light curves
WFI J2026–4536	$\Delta t_{AB} = 18.7^{+4.7}_{-4.9}$	From ECAM light curves
HE 2149–2745	$\Delta t_{AB} = -39.0^{+14.9}_{-14.9}$	PyCS–mult C2-ECAM (uncertain)
B 0218+357	$\Delta t_{AB} = -11.3^{+0.2}_{-0.2}$	From Biggs & Browne (2018)
DES 0408–5354	$\Delta t_{AB} = -112.1^{+2.1}_{-2.1}$ $\Delta t_{AD} = -155.5^{+12.8}_{-12.8}$ $\Delta t_{BD} = -42.4^{+17.6}_{-17.6}$	From Courbin et al. (2018)
SBS 0909+532	$\Delta t_{AB} = -50.0^{+2.0}_{-4.0}$	From Hainline et al. (2013)
FBQ 0951+2635	$\Delta t_{AB} = 16.0^{+2.0}_{-2.0}$	From Jakobsson et al. (2005)
J1001+5027	$\Delta t_{AB} = -119.3^{+3.3}_{-3.3}$	From Rathna Kumar et al. (2013)
HE 1104–1805	$\Delta t_{AB} = 152.2^{+2.8}_{-3.0}$	From Poindexter et al. (2007)
PG 1115+080	$\Delta t_{AB} = -8.3^{+1.5}_{-1.6}$ $\Delta t_{AC} = 9.9^{+1.1}_{-1.1}$ $\Delta t_{BC} = 18.8^{+1.6}_{-1.6}$	From Bonvin et al. (2018)
SDSS J1206+4332	$\Delta t_{AB} = -111.3^{+3.0}_{-3.0}$	From Eulaers et al. (2013)
SDSS J1339+1310	$\Delta t_{AB} = 47.0^{+5.0}_{-6.0}$	From Goicoechea & Shalyapin (2016)
HS 1413+117	$\Delta t_{AB} = -17.4^{+2.1}_{-2.1}$ $\Delta t_{AC} = -18.9^{+2.8}_{-2.8}$ $\Delta t_{AD} = 28.8^{+0.7}_{-0.7}$	From Akhunov et al. (2017)
B 1422+231	$\Delta t_{AB} = -1.5^{+1.4}_{-1.4}$ $\Delta t_{AC} = 7.6^{+2.5}_{-2.5}$ $\Delta t_{BC} = 8.2^{+2.0}_{-2.0}$	From Patnaik & Narasimha (2001)
SDSS J1442+4055	$\Delta t_{AB} = -25.0^{+1.5}_{-1.5}$	From Shalyapin & Goicoechea (2019)
SBS 1520+530	$\Delta t_{AB} = -130.0^{+3.0}_{-3.0}$	From Burud et al. (2002a)
B 1600+434	$\Delta t_{AB} = -51.0^{+4.0}_{-4.0}$	From Burud et al. (2000)
B 1608+656	$\Delta t_{AB} = 31.5^{+2.0}_{-1.0}$ $\Delta t_{CB} = 36.0^{+1.2}_{-1.2}$ $\Delta t_{DB} = 77.0^{+2.0}_{-1.0}$	From Fassnacht et al. (2002)
SDSS J1650+4251	$\Delta t_{AB} = -49.5^{+1.9}_{-1.9}$	From Vuissoz et al. (2007)
PKS 1830–211	$\Delta t_{AB} = -26.0^{+4.0}_{-5.0}$	From Lovell et al. (1998)
WFI 2033–4723	$\Delta t_{A1B} = 36.2^{+2.3}_{-1.6}$ $\Delta t_{A2B} = 37.3^{+3.0}_{-2.6}$ $\Delta t_{BC} = -59.4^{+1.3}_{-3.4}$	From Bonvin et al. (2019)
HS 2209+1914	$\Delta t_{AB} = 20.0^{+5.0}_{-5.0}$	From Eulaers et al. (2013)

**Notes.** The upper part of the table gives our new measurements while the lower part gives a summary of the published time delays in the literature.

$z_{\text{lens}}=0.523$ , was measured independently by Eigenbrod et al. (2006) and Ofek et al. (2006). Images *A* and *B* are in a close fold configuration and separated by only  $0''74$ . This two images are not resolved in the *Euler* exposures even after deconvolution. Their fluxes are therefore summed in one single virtual image  $A' = A + B$ . Both the C2 and ECAM data sets have relatively strong intrinsic features that allow us to measure the time delay between image  $A'$  and *C*. Image *D* is however too faint to obtain a robust measurement. We measure  $\Delta t_{A'C} = +13.2^{+5.8}_{-5.3}$  days from

the ECAM data set,  $\Delta t_{A'C} = +16.4^{+14.3}_{-16.6}$  days from the C2 data set and  $\Delta t_{A'C} = +15.7^{+4.2}_{-3.6}$  days from the joint C2-ECAM light curves. We adopt the later as our final time-delay estimate.

#### 4.5. SDSS J0246–0825

SDSS J0246–0825 is a doubly imaged quasar discovered by Inada et al. (2005) ( $z_{\text{source}} = 1.689$ ,  $z_{\text{lens}} = 0.723$ ). We present here the results of the monitoring campaign from November 2006 to April 2018. The time-delay estimate from the ECAM data set ( $\Delta t_{AB} = -1.9^{+6.0}_{-7.2}$  days) is compatible with the time delay measured from the C2 data set ( $\Delta t_{AB} = +2.1^{+10.5}_{-9.7}$  days). The PyCS–mult estimate yields  $\Delta t_{AB} = -1.3^{+5.8}_{-5.2}$  days, also in good agreement with the measurement performed on the joint ECAM-C2 light curve  $\Delta t_{AB} = +0.8^{+5.0}_{-5.2}$  days, which is our final value. Although this object displays prominent variations, its time delay is compatible with zero, making it of little use for cosmological purposes.

#### 4.6. HE 0435–1223

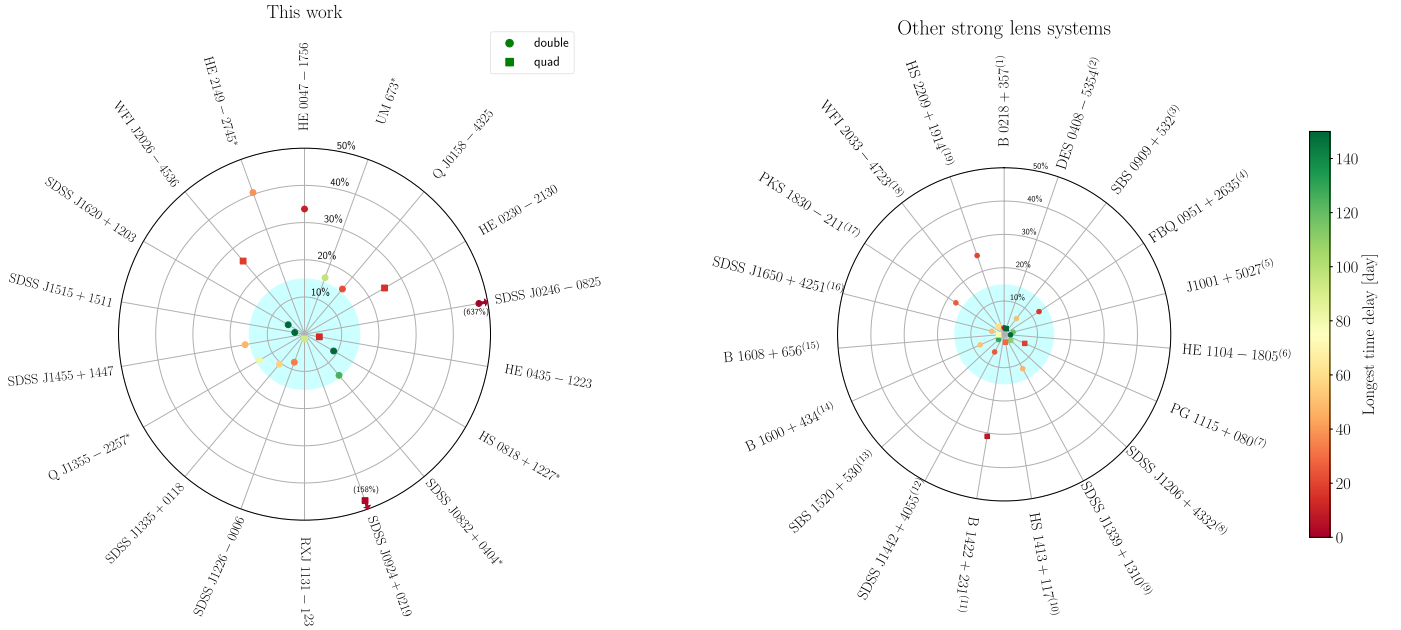
HE 0435–1223 is quadruply imaged quasar in a cross configuration ( $z_{\text{source}} = 1.693$ ,  $z_{\text{lens}} = 0.454$ , Wisotzki et al. 2002; Sluse et al. 2012). The time delays were first measured in Kochanek et al. (2006) with two seasons of optical monitoring, and later confirmed in Courbin et al. (2011) and Bonvin et al. (2017) with respectively seven and thirteen seasons of monitoring. We complement the data presented in Bonvin et al. (2017) with two additional seasons and measure the time delays with the automated pipeline presented in Sect. 3.2. We analyse separately the data presented in Courbin et al. (2011) corresponding to the C2, SMARTS, Maidanak and Mercator data (hereafter the C11 data set) and the ECAM data set. Our group of time-delay estimates on the C11 data set is  $\mathbf{G}_{\text{C11}} = [\Delta t_{AB} = -9.8^{+1.0}_{-1.0}, \Delta t_{AC} = -1.6^{+0.9}_{-1.0}, \Delta t_{AD} = -14.2^{+1.1}_{-1.1}]$  days compatible with less than  $1.4\sigma$  tension with our group of estimates on the ECAM data set  $\mathbf{G}_{\text{ECAM}} = [\Delta t_{AB} = -7.6^{+1.3}_{-1.3}, \Delta t_{AC} = +0.4^{+1.1}_{-1.1}, \Delta t_{AD} = -14.2^{+1.1}_{-1.1}]$  days. Our final PyCS–mult group of estimates combining the C11 and ECAM gives  $\mathbf{G}_{\text{PyCS-mult}} = [\Delta t_{AB} = -9.0^{+0.8}_{-0.8}, \Delta t_{AC} = -0.8^{+0.8}_{-0.7}, \Delta t_{AD} = -13.8^{+0.8}_{-0.8}]$  days in excellent agreement with the estimates that we obtain on the joint C11+ECAM light curves  $\mathbf{G}_{\text{all}} = [\Delta t_{AB} = -8.3^{+0.9}_{-0.8}, \Delta t_{AC} = -0.4^{+0.8}_{-0.8}, \Delta t_{AD} = -13.5^{+0.9}_{-0.8}]$  days.

#### 4.7. HS 0818+1227

HS 0818+1227 is a doubly imaged quasar discovered in the Hamburg Quasar Survey. Its redshift is  $z_{\text{source}} = 3.115$  (Hagen & Reimers 2000) and the redshift of the lensing galaxy is  $z_{\text{lens}} = 0.39$ . Using the joint ECAM-C2 light curves we propose a tentative delay of  $\Delta t_{AB} = -153.8^{+13.2}_{-14.6}$  days. We also find evidence for a multi-modal delay around  $-53$  days.

#### 4.8. SDSS J0832+0404

SDSS J0832+0404 is doubly imaged quasar discovered by Oguri et al. (2008) at  $z_{\text{source}} = 1.115$  and whose lens it at redshift  $z_{\text{lens}} = 0.659$ . It was monitored by the *Euler* Swiss telescope shortly after its discovery, from November 2010 to May 2018. The measurement is challenging as the time delay favoured by the data is close to that of the season length. Our best estimate is  $\Delta t_{AB} = -125.3^{+12.8}_{-23.4}$  days from the ECAM data set.



**Fig. 9.** Relative uncertainties on the measured time delays for objects presented in this work (*left*) and for other time delays available in the literature (*right*). In the case of quadruply imaged systems and when several independent time delays are measured, we multiply the independent time-delay estimates to obtain the relative uncertainty that is achievable on  $H_0$ . The light blue region corresponds to a precision of less than 15%. Systems marked with a \* have uncertain or multi-modal time delays. The time delays from the literature can be found in (1) Biggs & Browne (2018), (2) Courbin et al. (2018), (3) Hainline et al. (2013), (4) Jakobsson et al. (2005), (5) Rathna Kumar et al. (2013), (6) Poindexter et al. (2007), (7) Bonvin et al. (2018), (8) Eulaers et al. (2013), (9) Goicoechea & Shalyapin (2016), (10) Akhunov et al. (2017), (11) Patnaik & Narasimha (2001), (12) Shalyapin & Goicoechea (2019), (13) Burud et al. (2002a), (14) Burud et al. (2000), (15) Fassnacht et al. (2002), (16) Vuissoz et al. (2007), (17) Lovell et al. (1998), (18) Bonvin et al. (2019), (19) Eulaers et al. (2013). We note that these time delays from the literature were not measured in an homogeneous way, sometimes not taking into account the microlensing in the light curves. The uncertainties for some of these systems are therefore likely to be largely underestimated.

#### 4.9. SDSS J0924+0219

SDSS J0924+0219 is a quadruply imaged quasar at redshift  $z_{\text{source}} = 1.523$  ( $z_{\text{lens}} = 0.393$ ) discovered by Inada et al. (2003). As image  $D$  is faint and very close angularly to image  $A$  ( $0''.69$ ), we sum the flux of these two images into one single virtual image  $A'$ . We are able to measure the time delay in both the SMARTS and *Euler* data set but only between the two brighter images,  $A'$  and  $B$ . The light curve of image  $C$  is not of sufficient quality to distinguish features, essential for a reliable time-delay measurement. We find  $\Delta t_{A'B} = +2.5^{+4.3}_{-4.3}$  days using the *Euler* light curves and  $\Delta t_{A'B} = +3.0^{+8.2}_{-7.9}$  days with the SMARTS light curve. Combining these two measurements, we obtain the final PyCS-mult estimate:  $\Delta t_{A'B} = +2.4^{+3.8}_{-3.8}$  days.

#### 4.10. RXJ1131–1231

RXJ1131–1231 is a quadruply imaged quasar at redshift  $z_{\text{source}} = 0.657$  in a cusp configuration with a lens galaxy at redshift  $z_{\text{lens}} = 0.295$  (Sluse et al. 2003, 2007). The first attempt to measure the time delays is reported in Morgan et al. (2006) but appeared to be incorrect due to short light curves, insufficient data quality and possible microlensing variability that imitates the quasar variation (Tewes et al. 2013a). These time-delay estimates were corrected by Tewes et al. (2013a) with nine seasons of monitoring, demonstrating the need of long monitoring campaigns to obtain robust time-delay estimates unless high-cadence and high-signal-to-noise observations are available. We complement the data presented in Tewes et al. (2013a) with six new seasons of monitoring. In our analysis, we separate the data into two different sets; the data acquired between December 2003 and July 2010 at the SMARTS, *Mercator*, and *Euler* (C2) telescopes (hereafter the T13 data set) and the data acquired by the ECAM

camera at the *Euler* Telescope (ECAM data set). We obtain a group of time-delay estimates on the T13 data set  $\mathbf{G}_{\text{T13}} = [\Delta t_{AB} = 0.0^{+1.2}_{-1.0}, \Delta t_{AC} = -0.7^{+1.3}_{-1.4}, \Delta t_{AD} = -92.9^{+2.3}_{-2.5}]$  days. When applying our method on the ECAM data set we obtain  $\mathbf{G}_{\text{ECAM}} = [\Delta t_{AB} = +2.6^{+0.8}_{-0.9}, \Delta t_{AC} = -1.4^{+2.3}_{-2.5}, \Delta t_{AD} = -91.6^{+2.7}_{-3.0}]$  days. Our PyCS-mult final group of time-delay estimates is  $\mathbf{G}_{\text{PyCS-mult}} = [\Delta t_{AB} = +1.6^{+0.7}_{-0.7}, \Delta t_{AC} = -1.0^{+1.2}_{-1.2}, \Delta t_{AD} = -92.5^{+1.9}_{-1.8}]$ . We obtain very similar time delays and uncertainties when running our measurement pipeline on the joint T13+ECAM light curves  $\mathbf{G}_{\text{all}} = [\Delta t_{AB} = +1.3^{+1.0}_{-0.9}, \Delta t_{AC} = -1.0^{+1.6}_{-1.4}, \Delta t_{AD} = -92.7^{+2.3}_{-2.3}]$  days.

#### 4.11. SDSS J1226–0006

SDSS J1226–0006 is a doubly imaged quasar at redshift  $z_{\text{source}} = 1.123$  and a lensing galaxy at  $z_{\text{lens}} = 0.517$  (Inada et al. 2008). We use this object to illustrate the time-delay measurement pipeline developed for this paper. As shown on Fig. 6, we obtain  $\Delta t_{AB} = +34.7^{+3.7}_{-3.6}$  days using the ECAM data set and  $\Delta t_{AB} = +33.0^{+3.1}_{-4.9}$  days on the C2 data set. Combining the two measurements (PyCS-mult) gives  $\Delta t_{AB} = +33.7^{+2.7}_{-2.7}$  days, which is our final measurement, in good agreement with the joint ECAM-C2 estimate  $\Delta t_{AB} = +31.4^{+4.2}_{-5.8}$  days.

#### 4.12. SDSS J1335+0118

SDSS J1335+0118 is a doubly imaged quasar at  $z_{\text{source}} = 1.571$  and a lensing galaxy at  $z_{\text{lens}} = 0.440$ , (Oguri et al. 2004; Eigenbrod et al. 2006). A tentative predicted delay  $\Delta t_{AB,\text{pred}} = -43$  days was proposed in Oguri et al. (2004), assuming  $H_0 = 70 \text{ km s}^{-1} \text{ Mpc}^{-1}$ . We measure the time delay between images  $A$

an  $B$  on both the ECAM and C2 data sets. We obtain respectively  $\Delta t_{AB} = -61.3^{+9.9}_{-10.3}$  days using the C2 data and  $\Delta t_{AB} = -52.5^{+7.5}_{-7.2}$  days with ECAM data. As the data quality of both data sets allows a reliable time-delay estimate and since the two measurements are compatible within their  $1\sigma$  uncertainties we can combine them. We obtain a final PyCS-muIt estimate of  $\Delta t_{AB} = -56.0^{+5.7}_{-6.1}$  days, which is well compatible with the estimate from the joint ECAM-C2 light curves  $\Delta t_{AB} = -54.8^{+7.3}_{-7.3}$  days.

#### 4.13. Q 1355–2257

Q 1355–2257 is a doubly imaged quasar at redshift  $z_{\text{source}} = 1.370$  (Morgan et al. 2003). The redshift of the lens is  $z_{\text{lens}} = 0.701$  (Eigenbrod et al. 2006). A time delay of  $\Delta t_{AB} = -89^{+28}_{-39}$  days was predicted by Saha et al. (2006) assuming  $H_0 = 70 \text{ km s}^{-1} \text{ Mpc}^{-1}$  and ensembles of non-parametric models. Q 1355–2257 was monitored for seven seasons with the C2 camera and for additional three seasons with ECAM. We apply our measurement pipeline on the joint ECAM-C2 data set as the ECAM light curves alone does not contain enough structures to measure the time delay. We propose a tentative delay of  $\Delta t_{AB} = -81.5^{+10.8}_{-12.0}$  days. Note, however, that while the light curve of the brightest quasar image  $A$ , displays very well defined variations, the much fainter image  $B$  is very noisy and is the limiting factor in this time-delay measurement.

#### 4.14. SDSS J1455+1447

The doubly imaged quasar SDSS J1455+1447 was discovered by Kayo et al. (2010) at redshift  $z_{\text{source}} = 1.424$ . This object was monitored during seven seasons with the ECAM camera. We measured a time delay  $\Delta t_{AB} = -47.2^{+7.5}_{-7.8}$  days using only the ECAM data set.

#### 4.15. SDSS J1515+1511

SDSS J1515+1511 is a well separated and bright doubly imaged quasar at redshift  $z_{\text{source}} = 2.054$ ,  $z_{\text{lens}} = 0.742$  (Inada et al. 2014). Shalyapin & Goicoechea (2017) first measured the time delay between images  $A$  and  $B$  and found  $\Delta t_{AB} = -211 \pm 5$  days. In this work, we re-analyse the photometric data taken at the Liverpool Telescope between May 2014 and September 2016 with PyCS, testing the impact of several microlensing models on the time-delay measurement. We complement this data set with three seasons of monitoring taken with the ECAM instrument at the Euler Swiss Telescope between March 2014 and August 2017. The light curves of images  $A$  and  $B$  only have a very small overlap due to the time delay being of roughly the same duration as the season gap. We therefore obtain a poor precision using the ECAM data set alone  $\Delta t_{AB} = -199.6 \pm 16.0$  days. The only intrinsic variation that is clearly visible in both the  $A$  and  $B$  light curve at the end of season 2015 in  $A$  and at the beginning of season 2016 is insufficiently sampled in the ECAM data set to obtain a precise estimate. Using the Liverpool data set alone, the better monitoring cadence and the longer monitoring season allows us to measure  $\Delta t_{AB} = -214.6^{+4.6}_{-7.6}$  days. This is in good agreement with previous estimates of Shalyapin & Goicoechea (2017) on the same data set but using a different methodology. The slightly larger uncertainties of our analysis can be explained by the fact that we extensively test against a broad variety of different microlensing models and that we marginalise over two different curve shifting techniques.

By combining the two data sets into one single light curve, we significantly improve the sampling on the critical part of the curves that contain distinctive features in both  $A$  and  $B$  images.

Our final estimate on the joint Euler+Liverpool light curves is  $\Delta t_{AB} = -210.5^{+5.5}_{-5.7}$  days.

#### 4.16. SDSS J1620+1203

The doubly imaged quasar SDSS J1620+1203 ( $z_{\text{source}} = 1.158$ ,  $z_{\text{lens}} = 0.398$ ) was discovered in the Sloan Sky Digital Survey (SDSS) by Kayo et al. (2010). This object was mainly monitored with the ECAM instrument during seven seasons and with the C2 camera for one season. As the C2 data alone are largely insufficient to measure a time delay, we merge the two data sets in one single light curve. We apply our method on the joint ECAM-C2 light curves and obtain  $\Delta t_{AB} = -171.5^{+8.7}_{-8.7}$  days. Similarly to SDSS J1515+1511, this lensed quasar has a time delay of the same duration of the season gap which limits the achievable precision.

#### 4.17. WFI J2026–4536

WFI J2026–4536 is a quadruply imaged quasar in a fold configuration ( $z_{\text{source}} = 2.23$ , and uncertain lens redshift  $z_{\text{lens}} = 1.04$ ) discovered by Morgan et al. (2004). Saha et al. (2006) predicted an AB time delay of  $15^{+2}_{-6}$  days, from non-parametric modelling of point-like image positions. As images  $A1$  and  $A2$  are still not resolved after deconvolution because of their low image separation ( $0''33$ ), we add the flux of these two images into one virtual image  $A$ . Only the time delay between images  $A$  and  $B$  is measurable with our data. The light curve of image  $C$  is too noisy to identify intrinsic variation of the quasar and reliably estimate a time delay. In Cornachione et al. (2020) only the AB time delay is presented, whereas the AC delay is predicted by modelling the lens and assuming a fiducial cosmology. This paper is focusing on determining the accretion disc size of this object using the microlensing. We present here the details of the measurement of the AB time delay.

Most of the constraining features of the light curves are concentrated in the ECAM data, especially in the 2014 and 2015 seasons. We use separately the ECAM data and the joint C2-ECAM data and obtain respectively  $\Delta t_{AB} = +18.7^{+4.9}_{-4.7}$  days and  $\Delta t_{AB} = +18.4^{+6.7}_{-9.6}$  days. The C2 data are particularly noisy and do not contain clear variations of the quasar visible in either of images  $A$  and  $B$ . Adding them to the ECAM data results in a loss of precision of the measurement without changing the median value of the estimate. For any follow-up work, we therefore recommend to use only the ECAM estimate.

#### 4.18. HE 2149–2745

The doubly imaged Broad Absorption Line (BAL) quasar HE 2149–2745 was discovered in the Hamburg/ESO survey by Wisotzki et al. (1996). The redshift of the quasar is  $z_{\text{source}} = 2.033$  and the redshift of the lens is  $z_{\text{lens}} = 0.603$  (Eigenbrod et al. 2006). The time delay between images  $A$  and  $B$  was previously published by Burud et al. (2002b), who found  $\Delta t_{AB} = -103 \pm 12$  days but a reanalysis of the same data by Eulaers & Magain (2011) concluded that the previous measurement was not reliable.

We propose a tentative time-delay estimate of  $\Delta t_{AB} = -39.0^{+14.9}_{-16.7}$  days (PyCS-muIt C2-ECAM), significantly different from the previous measurement although our data do not allow us to completely exclude the previous time-delay estimate. Our measurement on the joint C2-ECAM light curves gives  $\Delta t_{AB} = -32.4^{+18.3}_{-9.3}$ , in agreement with the PyCS-muIt estimate. We note



that this is a BAL quasar with therefore a complex internal structure. This quasar may be a good candidate to detect the microlensing time delay as described in [Tie & Kochanek \(2018\)](#), although in this case the source size effect may be due to the BAL structure around the quasar rather than to the time propagation of light in the accretion disc.

#### 4.19. Inconclusive attempts

Some of our monitoring data do not provide robust time delays. We nevertheless release the data for possible combination with future data sets. For each we provide the discovery paper as well as the source and lens redshifts when available. These unfortunate cases are listed below.

**Q 2237+0305.** This system ( $z_{\text{source}} = 1.69$ ,  $z_{\text{lens}} = 0.039$ , [Huchra et al. 1985](#)) is a quadruply imaged quasar where the multiple images are formed in the bulge of the lensing spiral galaxy. The variability of this system is dominated by the microlensing variability due to the very high stellar density at the position of multiple images. For this reason, the peak that can be observed in image *C* at the end of 2012 in [Fig. B.1](#) cannot be matched in the other curves and is attributed to a microlensing caustic crossing event ([Goicoechea et al. 2020](#)). As a result of this large extrinsic variability, the measurement of time delays is not possible with this data set.

**SDSS J1320+1644.** This doubly imaged system ( $z_{\text{source}} = 1.502$ ,  $z_{\text{lens}} = 0.899$ , [Rusu et al. 2013](#)) do not yield any time-delay measurements because of the poor sampling of the light curves and the short monitoring season. With an average of  $\sim 10$  epochs per monitoring season, the observing cadence was not sufficient to measure a time delay despite the large amplitude variation ( $\sim 0.4$  mag) seen in image *B*. In addition, this target is located at  $\text{Dec} = +16$ , which is at the northern limit of what can be observed from La Silla Observatory with a sufficiently long visibility window. The time delay of this system is probably of the order of several years ([Rusu et al. 2013](#)), due to the very large image separation ( $8''57$ ).

**SDSS J1322+1052.** We could not measure a time delay for this system ( $z_{\text{source}} = 1.717$ ,  $z_{\text{lens}} = \sim 0.55$ , [Oguri et al. 2008](#)) because of the faint *B* image coupled with the absence of intrinsic variation with an amplitude larger than 0.1 mag. The relatively noisy *B* light curve do not allowed us to clearly identify intrinsic variations that are also visible in image *A*.

**SDSS J1349+1227.** Despite the seven years of monitoring, we could not determine the time delay of this lens system ( $z_{\text{source}} = 1.722$ ,  $z_{\text{lens}} = \sim 0.65$ , [Kayo et al. 2010](#)) because of the absence of intrinsic variation larger than 0.1 mag in image *B*. Image *A* shows a variation of the order of  $\sim 0.15$  mag at the end of 2016 and beginning of 2017 but this variation cannot be matched in image *B*. Since the time delay is predicted to be of the order of one year ([Kayo et al. 2010](#)), this variation might had appeared in the *B* light curve after the end of our monitoring campaign.

**SDSS J1405+0959.** This doubly imaged lens quasar ( $z_{\text{source}} = 1.81$ ,  $z_{\text{lens}} = \sim 0.66$ , [Jackson et al. 2012](#)) do not yield any time-delay measurements due to the absence of a clear intrinsic signal above the noise level. This is due to the combination of the poor sampling of the light curves, the relatively faint *B* component that is also contaminated by light of the lens

galaxy, the short monitoring seasons and the low variability of the quasar.

## 5. Conclusions

We present long-term lens monitoring data acquired at the *Euler* Swiss telescope since the very beginning of the COSMOGRAIL programme in September 2003 up to April 2018. We show for the first time the decade-long light curves for a sample of 23 lensed quasars.

A new automated procedure has been developed in order to process all light curves within a homogeneous framework. The curve-shifting package PyCS has been adapted to ensure that measurements are robust against the choice of parameters for the intrinsic variability of the quasar as well as for the microlensing variations.

We successfully measure 18 time delays, among which nine have uncertainties below 15%. These objects are therefore possible good candidates for time-delay cosmography. Turning these time delays into cosmological constraints will require the modelling of the lenses and the analysis of the line of sight as done by the H0LiCOW (e.g. [Suyu et al. 2017](#); [Bonvin et al. 2017](#); [Birrer et al. 2019](#); [Wong et al. 2020](#)), STRIDES (e.g. [Shajib et al. 2020](#)) and SHARP collaborations (e.g. [Chen et al. 2019](#)).

We show that long term monitoring campaigns can provide precise time-delay estimates and overcome the degeneracy between the intrinsic variations of the quasar and the microlensing by collecting over the years several inflection points that can be seen in the light curves of the multiple images. However, we report that several systems do not exhibit sharp variations with amplitude that can be detected at the photometric precision of our data. As a result, the monitoring strategy should now be adapted to higher cadence and higher photometric precision. Recent monitoring campaigns conducted with 2 m-class telescopes achieve a high level of precision on the time delay in only one monitoring season by successfully observing small variation of quasars, happening on shorter time-scales than typical microlensing variation ([Courbin et al. 2018](#); [Bonvin et al. 2018](#)).

Future high-cadence lens monitoring data, along with their cosmological interpretation will, from now on, be presented in the new series of TDCOSMO (Time-Delay COSMOgraphy) papers (e.g. [Millon et al. 2020](#)), which includes members of the present COSMOGRAIL collaboration in addition to the H0LiCOW, STRIDES and SHARP collaborations.

*Acknowledgements.* The authors would like to thank all the *Euler* observers as well as the technical staff of the *Euler* Swiss telescope who made the uninterrupted observation over 15 years possible. COSMOGRAIL is supported by the Swiss National Science Foundation (SNSF) and by the European Research Council (ERC) under the European Union's Horizon 2020 research and innovation programme (COSMICLENS: grant agreement No. 787886). This research made use of Astropy, a community-developed core Python package for Astronomy ([Astropy Collaboration 2013, 2018](#)) and the 2D graphics environment Matplotlib ([Hunter 2007](#)).

## References

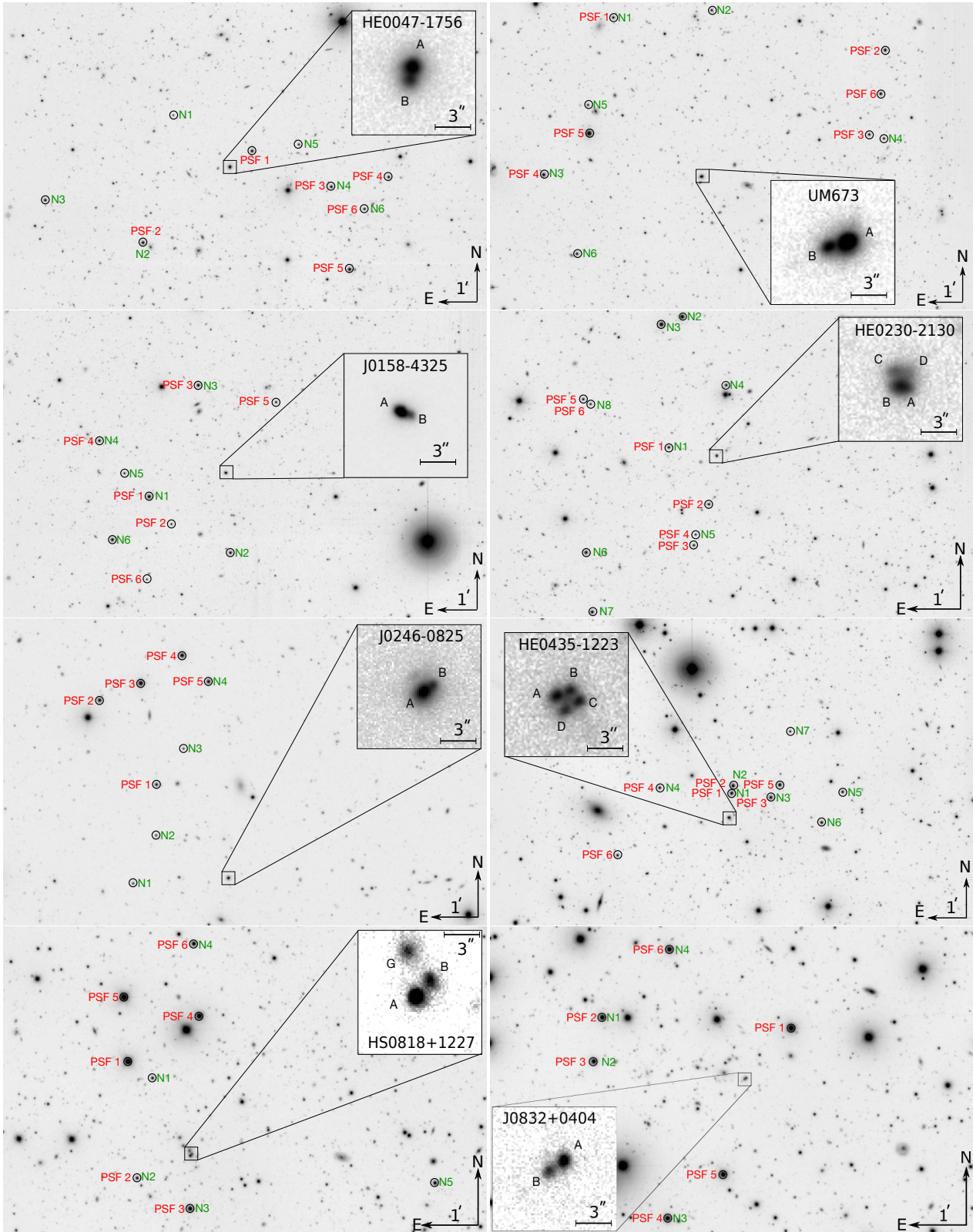
- Abbott, B. P., Abbott, R., Abbott, T. D., et al. 2017, *Nature*, 551, 85
- Abbott, T. M. C., Abdalla, F. B., Annis, J., et al. 2018, *MNRAS*, 480, 3879
- Aghamousa, A., & Shafieloo, A. 2015, *ApJ*, 804, 39
- Agnello, A., Treu, T., Ostrovski, F., et al. 2015, *MNRAS*, 454, 1260
- Agnello, A., Lin, H., Kuropatkin, N., et al. 2018, *MNRAS*, 479, 4345
- Akhunov, T. A., Wertz, O., Elyiv, A., et al. 2017, *MNRAS*, 465, 3607
- Anguita, T., Schechter, P. L., Kuropatkin, N., et al. 2018, *MNRAS*, 480, 5017
- Astropy Collaboration (Robitaille, T. P., et al.) 2013, *A&A*, 558, A33

- Astropy Collaboration (Price-Whelan, A. M., et al.) 2018, *AJ*, 156, 123
- Biggs, A. D., & Browne, I. W. A. 2018, *MNRAS*, 476, 5393
- Birrer, S., Treu, T., Rusu, C. E., et al. 2019, *MNRAS*, 484, 4726
- Bonvin, V., Tewes, M., Courbin, F., et al. 2016, *A&A*, 585, A88
- Bonvin, V., Courbin, F., Suyu, S. H., et al. 2017, *MNRAS*, 465, 4914
- Bonvin, V., Chan, J. H. H., Millon, M., et al. 2018, *A&A*, 616, A183
- Bonvin, V., Millon, M., Chan, J. H. H., et al. 2019, *A&A*, 629, A97
- Braatz, J., Condon, J., Henkel, C., et al. 2018, in *Astrophysical Masers: Unlocking the Mysteries of the Universe*, eds. A. Tarchi, M. J. Reid, & P. Castangia, *IAU Symp.*, 336, 86
- Burud, I., Hjorth, J., Jaunsen, A. O., et al. 2000, *ApJ*, 544, 117
- Burud, I., Hjorth, J., Courbin, F., et al. 2002a, *A&A*, 391, 481
- Burud, I., Courbin, F., Magain, P., et al. 2002b, *A&A*, 383, 71
- Cantale, N., Courbin, F., Tewes, M., Jablonka, P., & Meylan, G. 2016, *A&A*, 589, A81
- Chen, G. C. F., Chan, J. H. H., Bonvin, V., et al. 2018, *MNRAS*, 481, 1115
- Chen, G. C. F., Fassnacht, C. D., Suyu, S. H., et al. 2019, *MNRAS*, 490, 1743
- Cornachione, M. A., Morgan, C. W., Millon, M., et al. 2020, *ApJ*, 895, 125
- Courbin, F., Eigenbrod, A., Vuissoz, C., Meylan, G., & Magain, P. 2005, in *Gravitational Lensing Impact on Cosmology*, eds. Y. Mellier, & G. Meylan, *IAU Symp.*, 225, 297
- Courbin, F., Chantry, V., Revaz, Y., et al. 2011, *A&A*, 536, A53
- Courbin, F., Bonvin, V., Buckley-Geer, E., et al. 2018, *A&A*, 609, A71
- de Grijs, R., Courbin, F., Martínez-Vázquez, C. E., et al. 2017, *Space Sci. Rev.*, 212, 1743
- Dobler, G., Fassnacht, C. D., Treu, T., et al. 2015, *ApJ*, 799, 168
- Eigenbrod, A., Courbin, F., Vuissoz, C., et al. 2005, *A&A*, 436, 25
- Eigenbrod, A., Courbin, F., Meylan, G., Vuissoz, C., & Magain, P. 2006, *A&A*, 451, 759
- Eigenbrod, A., Courbin, F., & Meylan, G. 2007, *A&A*, 465, 51
- Eisenstein, D. J., Seo, H.-J., Sirko, E., & Spergel, D. N. 2007, *ApJ*, 664, 675
- Eulaers, E., & Magain, P. 2011, *A&A*, 536, A44
- Eulaers, E., Tewes, M., Magain, P., et al. 2013, *A&A*, 553, A121
- Fassnacht, C. D., Pearson, T. J., Readhead, A. C. S., et al. 1999, *ApJ*, 527, 498
- Fassnacht, C. D., Xanthopoulos, E., Koopmans, L. V. E., & Rusin, D. 2002, *ApJ*, 581, 823
- Faure, C., Anguita, T., Eigenbrod, A., et al. 2009, *A&A*, 496, 361
- Feeey, S. M., Peiris, H. V., Williamson, A. R., et al. 2019, *Phys. Rev. Lett.*, 122, 061105
- Freedman, W. L., Madore, B. F., Hoyt, T., et al. 2020, *ApJ*, 891, 57
- Giannini, E., Schmidt, R. W., Wambsganss, J., et al. 2017, *A&A*, 597, A49
- Goicoechea, L. J., & Shalyapin, V. N. 2016, *A&A*, 596, A77
- Goicoechea, L. J., Artamonov, B. P., Shalyapin, V. N., et al. 2020, *A&A*, 637, A89
- Hagen, H. J., & Reimers, D. 2000, *A&A*, 357, L29
- Hainline, L. J., Morgan, C. W., MacLeod, C. L., et al. 2013, *ApJ*, 774, 69
- Hirv, A., Olsper, N., & Pelt, J. 2011, *Baltic Astron.*, 20, 125
- Hojjati, A., & Linder, E. V. 2014, *Phys. Rev. D*, 90, 123501
- Hojjati, A., Kim, A. G., & Linder, E. V. 2013, *Phys. Rev. D*, 87, 123512
- Huang, C. D., Riess, A. G., Yuan, W., et al. 2020, *ApJ*, 889, 5
- Huchra, J., Gorenstein, M., Kent, S., et al. 1985, *AJ*, 90, 691
- Humphreys, E. M. L., Reid, M. J., Moran, J. M., Greenhill, L. J., & Argon, A. L. 2013, *ApJ*, 775, 13
- Hunter, J. D. 2007, *Comput. Sci. Eng.*, 9, 90
- Inada, N., Becker, R. H., Burles, S., et al. 2003, *AJ*, 126, 666
- Inada, N., Burles, S., Gregg, M. D., et al. 2005, *AJ*, 130, 1967
- Inada, N., Oguri, M., Becker, R. H., et al. 2008, *AJ*, 135, 496
- Inada, N., Oguri, M., Rusu, C. E., Kayo, I., & Morokuma, T. 2014, *AJ*, 147, 153
- Jackson, N., Rampadarath, H., Ofek, E. O., Oguri, M., & Shin, M.-S. 2012, *MNRAS*, 419, 2014
- Jakobsson, P., Hjorth, J., Burud, I., et al. 2005, *A&A*, 431, 103
- Kayo, I., Inada, N., Oguri, M., et al. 2010, *AJ*, 139, 1614
- Kelly, B. C., Bechtold, J., & Siemiginowska, A. 2009, *ApJ*, 698, 895
- Kochanek, C. S., Morgan, N. D., Falco, E. E., et al. 2006, *ApJ*, 640, 47
- Koptelova, E., Chen, W. P., Chiu, T., et al. 2012, *A&A*, 544, A51
- Krone-Martins, A., Delchambre, L., Wertz, O., et al. 2018, *A&A*, 616, L11
- Kundic, T., Hogg, D. W., Blandford, R. D., et al. 1997, *AJ*, 114, 2276
- Lemon, C. A., Auger, M. W., McMahon, R. G., & Ostrowski, F. 2018, *MNRAS*, 479, 5060
- Lemon, C. A., Auger, M. W., & McMahon, R. G. 2019, *MNRAS*, 483, 4242
- Liao, K., Treu, T., Marshall, P., et al. 2015, *ApJ*, 800, 11
- Lovell, J. E. J., Jauncey, D. L., Reynolds, J. E., et al. 1998, *ApJ*, 508, L51
- MacLeod, C. L., Morgan, C. W., Mosquera, A., et al. 2015, *ApJ*, 806, 258
- Magain, P., Courbin, F., & Sohy, S. 1998, *ApJ*, 494, 472
- Millon, M., Galan, A., Courbin, F., et al. 2020, *A&A*, 639, A101
- Morgan, N. D., Dressler, A., Maza, J., Schechter, P. L., & Winn, J. N. 1999, *AJ*, 118, 1444
- Morgan, N. D., Gregg, M. D., Wisotzki, L., et al. 2003, *AJ*, 126, 696
- Morgan, N. D., Caldwell, J. A. R., Schechter, P. L., et al. 2004, *AJ*, 127, 2617
- Morgan, N. D., Kochanek, C. S., Falco, E. E., & Dai, X. 2006, *ArXiv e-prints* [arXiv:astro-ph/0605321]
- Morgan, C. W., Eyler, M. E., Kochanek, C. S., et al. 2008, *ApJ*, 676, 80
- Morgan, C. W., Hainline, L. J., Chen, B., et al. 2012, *ApJ*, 756, 52
- Ofek, E. O., Maoz, D., Rix, H.-W., Kochanek, C. S., & Falco, E. E. 2006, *ApJ*, 641, 70
- Oguri, M., Inada, N., Castander, F. J., et al. 2004, *PASJ*, 56, 399
- Oguri, M., Inada, N., Clocchiatti, A., et al. 2008, *AJ*, 135, 520
- Oscosz, A., Serra-Ricart, M., Mediavilla, E., & Muñoz, J. A. 2013, *ApJ*, 779, 144
- Patnaik, A. R., & Narasimha, D. 2001, *MNRAS*, 326, 1403
- Pelt, J., Hoff, W., Kayser, R., Refsdal, S., & Schramm, T. 1994, *A&A*, 286, 775
- Pesce, D. W., Braatz, J. A., Reid, M. J., et al. 2020, *ApJ*, 891, L1
- Philcox, O. H. E., Ivanov, M. M., Simonović, M., & Zaldarriaga, M. 2020, *J. Cosmol. Astropart. Phys.*, 2020, 032
- Planck Collaboration VI. 2020, *A&A*, in press, <https://doi.org/10.1051/0004-6361/201833910>
- Poindexter, S., Morgan, N., Kochanek, C. S., & Falco, E. E. 2007, *ApJ*, 660, 146
- Press, W. H., Rybicki, G. B., & Hewitt, J. N. 1992, *ApJ*, 385, 416
- Rathna Kumar, S., Tewes, M., Stalin, C. S., et al. 2013, *A&A*, 557, A44
- Refsdal, S. 1964, *MNRAS*, 128, 307
- Riess, A. G., Casertano, S., Yuan, W., Macri, L. M., & Scolnic, D. 2019, *ApJ*, 876, 85
- Roberts, D. H., Lehar, J., Hewitt, J. N., & Burke, B. F. 1991, *Nature*, 352, 43
- Rusu, C. E., Oguri, M., Iye, M., et al. 2013, *ApJ*, 765, 139
- Rusu, C. E., Wong, K. C., Bonvin, V., et al. 2020, *MNRAS*, in press, [arXiv:1905.09338]
- Saha, P., Courbin, F., Sluse, D., Dye, S., & Meylan, G. 2006, *A&A*, 450, 461
- Schild, R. E. 1990, *AJ*, 100, 1771
- Shajib, A. J., Birrer, S., Treu, T., et al. 2020, *MNRAS*, 494, 6072
- Shalyapin, V. N., & Goicoechea, L. J. 2017, *ApJ*, 836, 14
- Shalyapin, V. N., & Goicoechea, L. J. 2019, *ApJ*, 873, 117
- Sluse, D., Surdej, J., Claeskens, J. F., et al. 2003, *A&A*, 406, L43
- Sluse, D., Claeskens, J. F., Hutsemekers, D., & Surdej, J. 2007, *A&A*, 468, 885
- Sluse, D., Hutsemekers, D., Courbin, F., Meylan, G., & Wambsganss, J. 2012, *A&A*, 544, A62
- Soares-Santos, M., Palmese, A., Hartley, W., et al. 2019, *ApJ*, 876, L7
- Surdej, J., Magain, P., Swings, J. P., et al. 1987, *Nature*, 329, 695
- Suyu, S. H. 2012, *MNRAS*, 426, 868
- Suyu, S. H., Bonvin, V., Courbin, F., et al. 2017, *MNRAS*, 468, 2590
- Suyu, S. H., Chang, T.-C., Courbin, F., & Okumura, T. 2018, *Space Sci. Rev.*, 214, 91
- Tewes, M., Courbin, F., Meylan, G., et al. 2013a, *A&A*, 556, A22
- Tewes, M., Courbin, F., & Meylan, G. 2013b, *A&A*, 553, A120
- Tie, S. S., & Kochanek, C. S. 2018, *MNRAS*, 473, 80
- Vanderriest, C., Schneider, J., Herpe, G., et al. 1989, *A&A*, 215, 1
- Verde, L., Treu, T., & Riess, A. G. 2019, *Nat. Astron.*, 3, 891
- Vuissoz, C., Courbin, F., Sluse, D., et al. 2007, *A&A*, 464, 845
- Walsh, D., Carswell, R. F., & Weymann, R. J. 1979, *Nature*, 279, 381
- Wisotzki, L., Koehler, T., Lopez, S., & Reimers, D. 1996, *A&A*, 315, 405
- Wisotzki, L., Christlieb, N., Liu, M. C., et al. 1999, *A&A*, 348, L41
- Wisotzki, L., Schechter, P. L., Bradt, H. V., Heinmüller, J., & Reimers, D. 2002, *A&A*, 395, 17
- Wisotzki, L., Schechter, P. L., Chen, H. W., et al. 2004, *A&A*, 419, L31
- Wong, K. C., Suyu, S. H., Chen, G. C. F., et al. 2020, *MNRAS*, in press, [arXiv:1907.04869]
- Yuan, W., Riess, A. G., Macri, L. M., Casertano, S., & Scolnic, D. M. 2019, *ApJ*, 886, 61

### Appendix A: Field of view of all lensed quasars

We present below the field of view for each of our lensed quasars, showing the reference stars used for the relative photometry and the PSF stars used for the deconvolution photometry.

All images are stacks of the best seeing frames taken in the *R*-band and often include dozens of hours of total integration.



**Fig. A.1.** Deep field images, similar to Fig. 1, for the rest of the COSMOGRAIL lensed quasar sample.

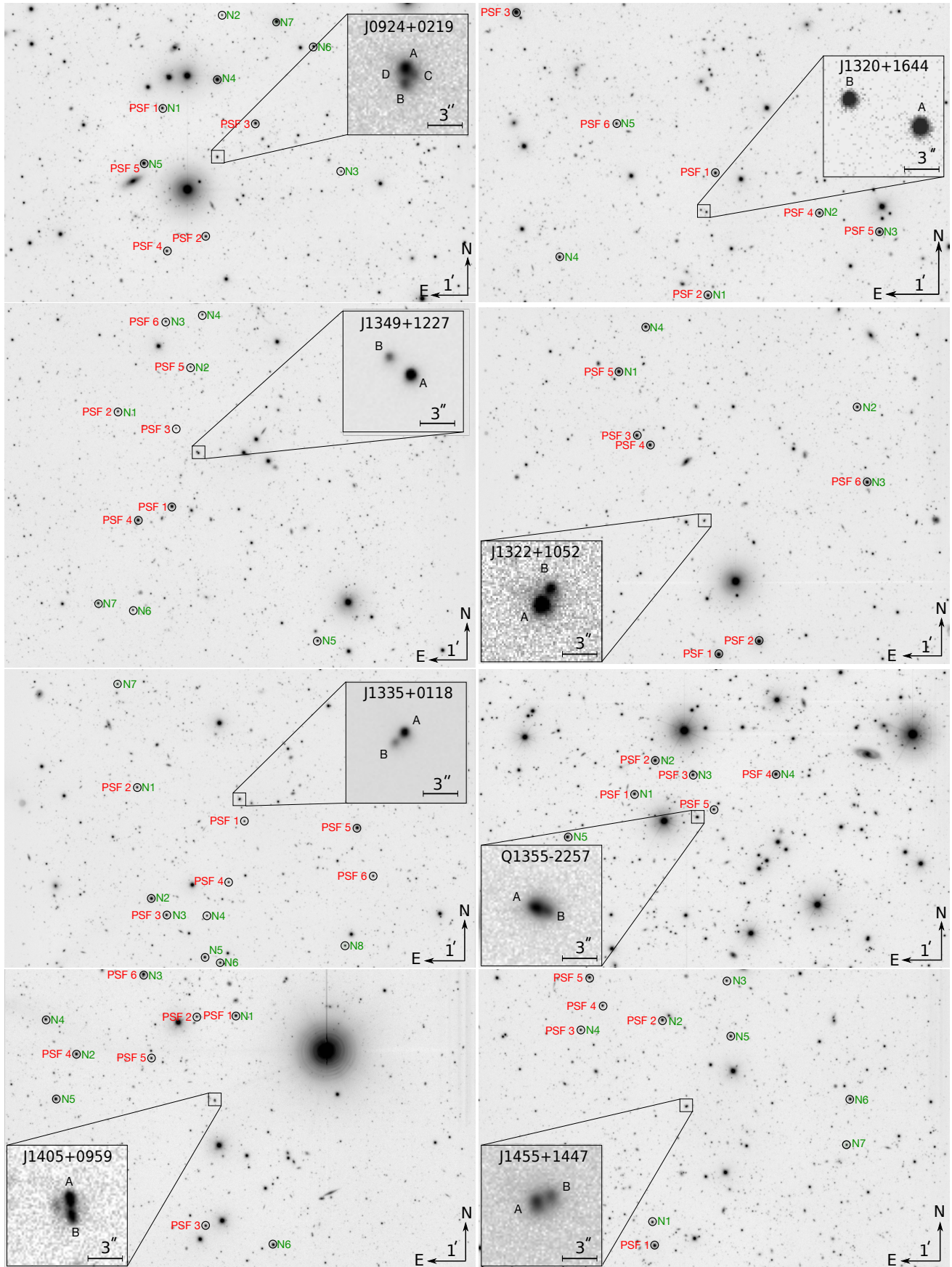


Fig. A.1. continued.

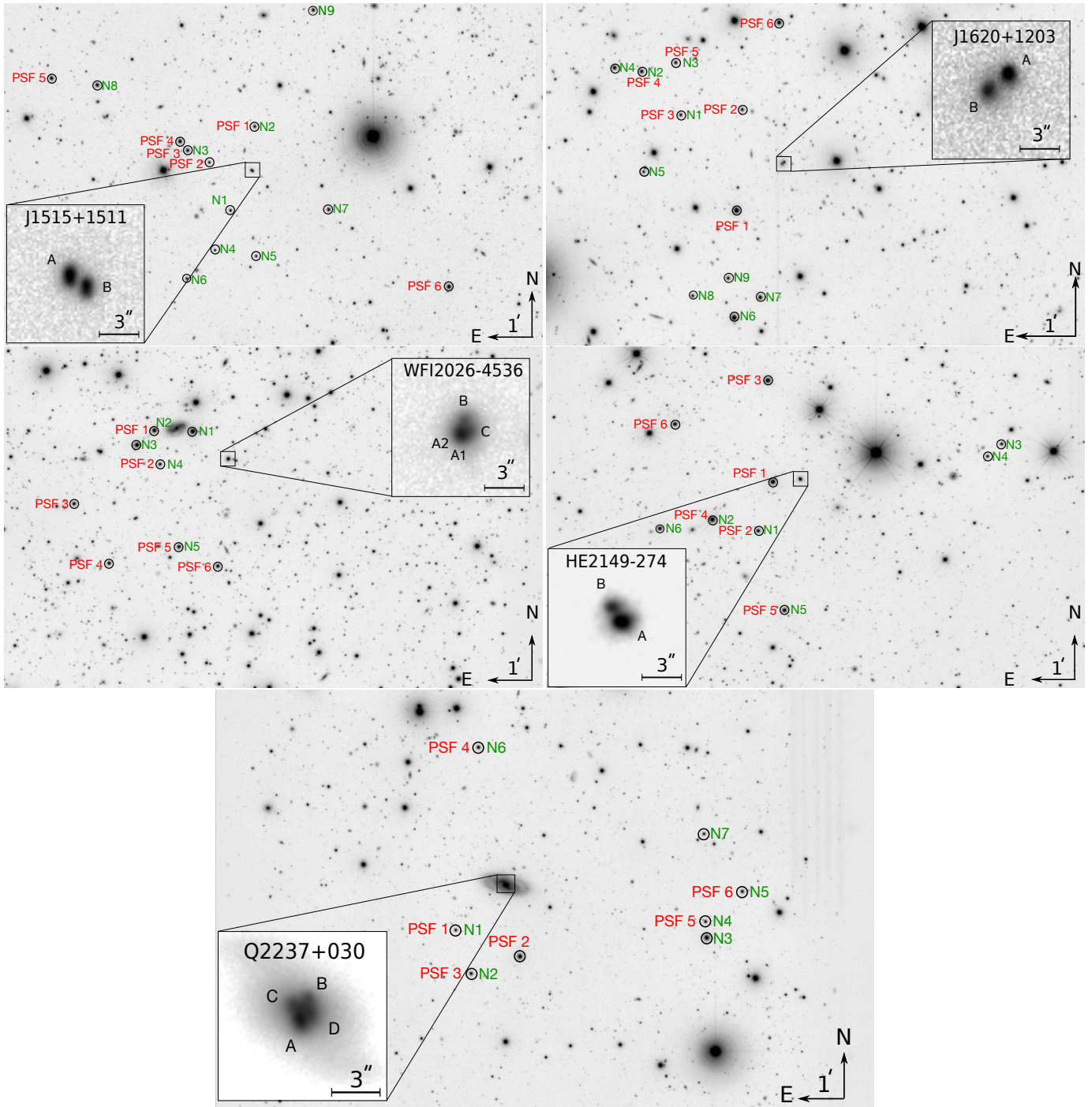
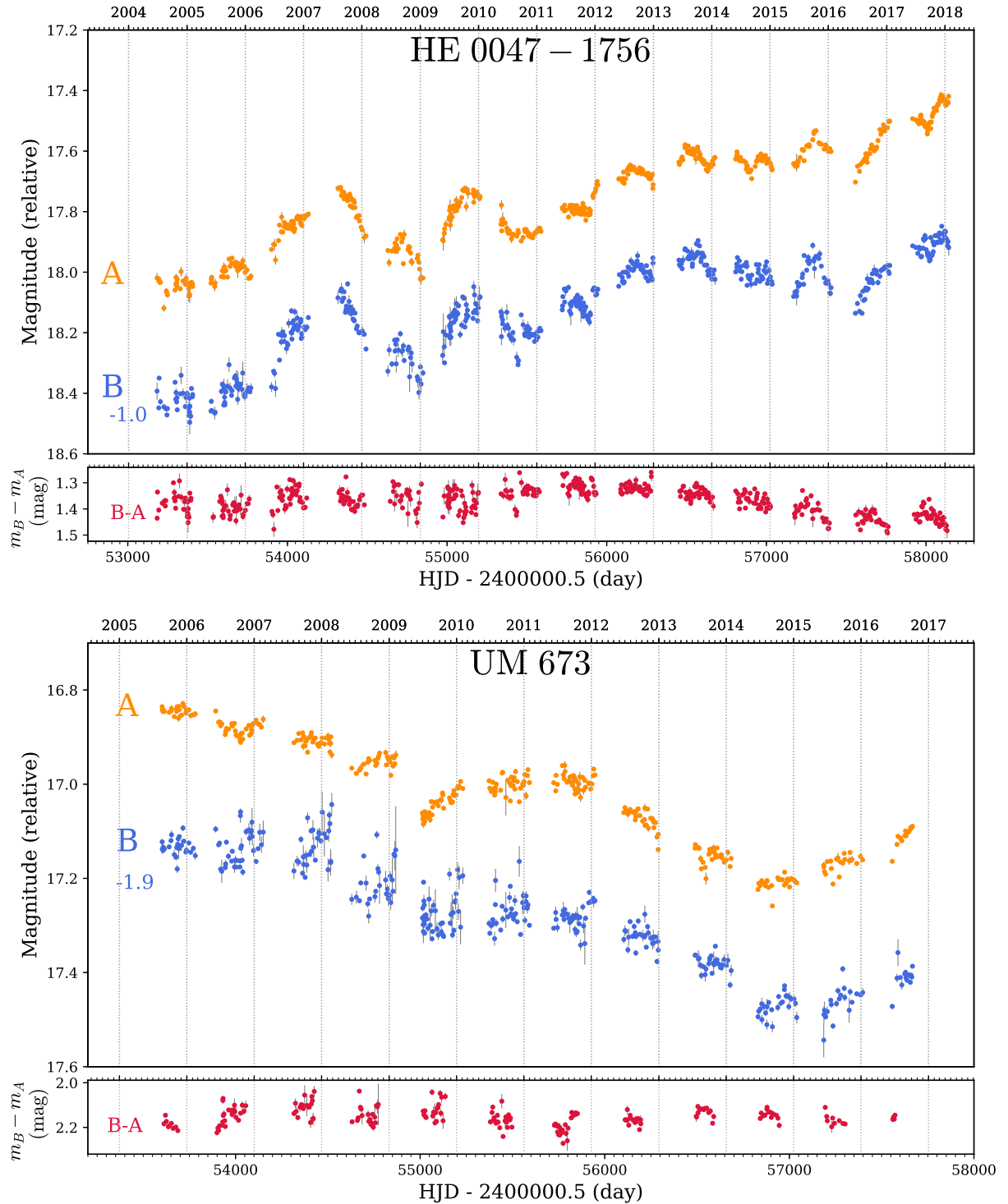


Fig. A.1. continued.

## Appendix B: Light curves for all lensed quasars

In this section, we show the *R*-band light curves for all our objects, obtained using deconvolution photometry. Many span almost 15 years in length with a typical temporal sampling of one point every 3–5 days. The light curves can be visualised and downloaded from the D3CS interactive tool and the CDS data base. When additional photometric data are available in the

literature, we add these data points onto our light curves (see Sect. 2.2). For each curve, we also show the flux ratio between the quasar images after correction for the time delay measured with PyCS and using a free-knot spline interpolation. This allows us to unveil the variations due purely to microlensing over a very long time scale. When we are not able to measure the time delay, we subtract the curves pair-wise without shifting them in time.



**Fig. B.1.** Light curves for lensed QSO HE 0047–1756 and UM 673. Legend is the same as for Fig. 2.

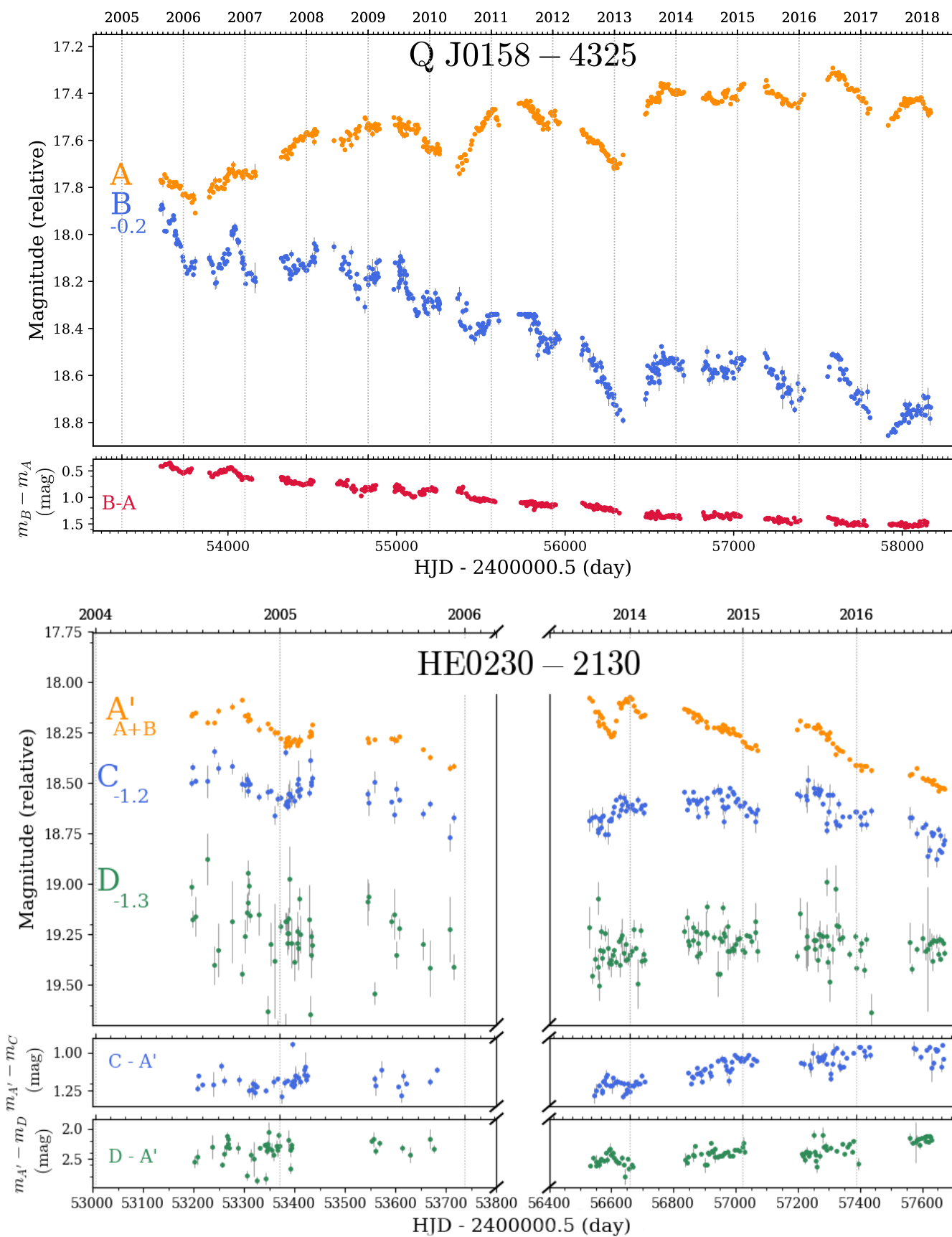


Fig. B.1. continued.

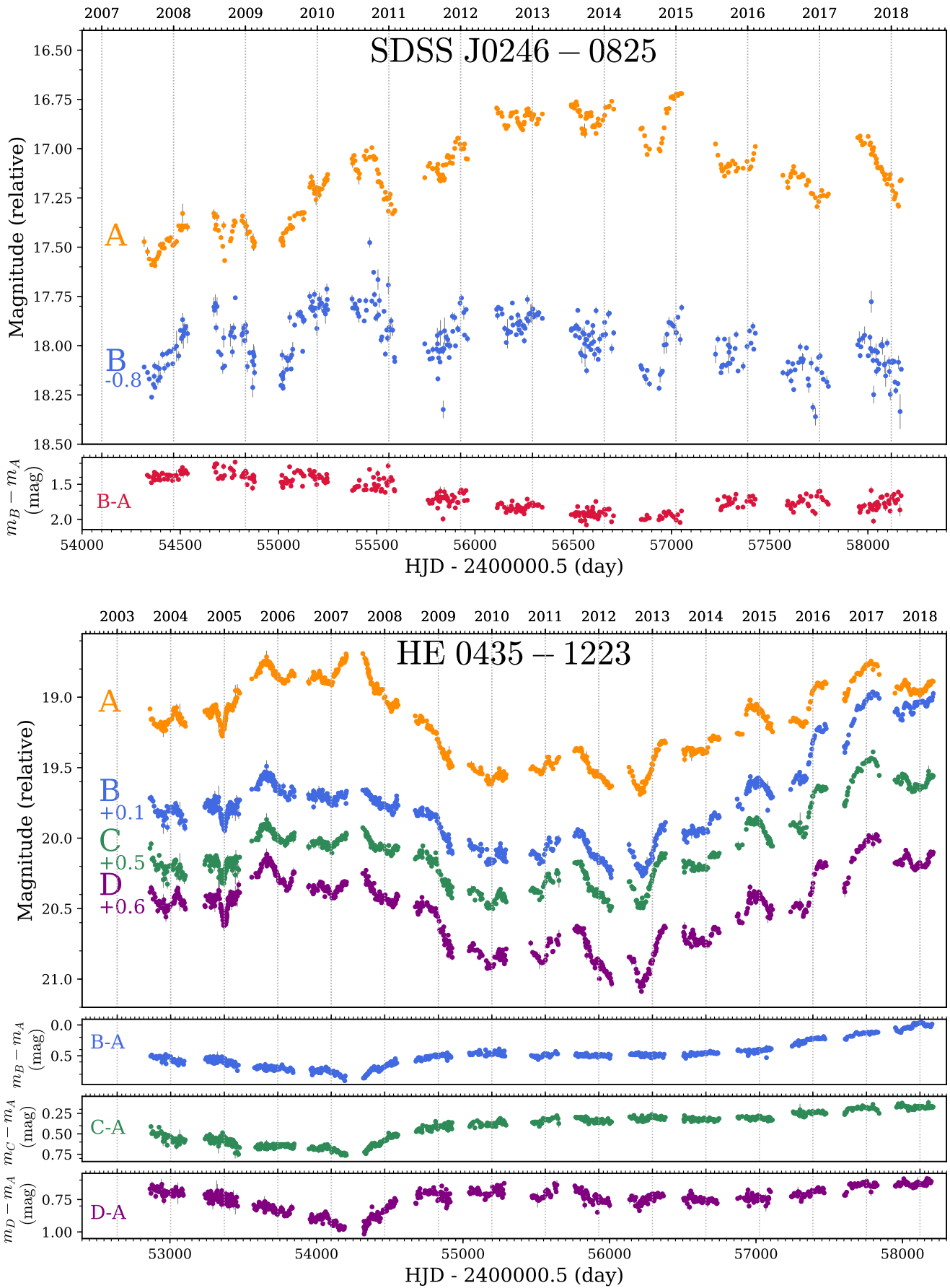


Fig. B.1. continued.



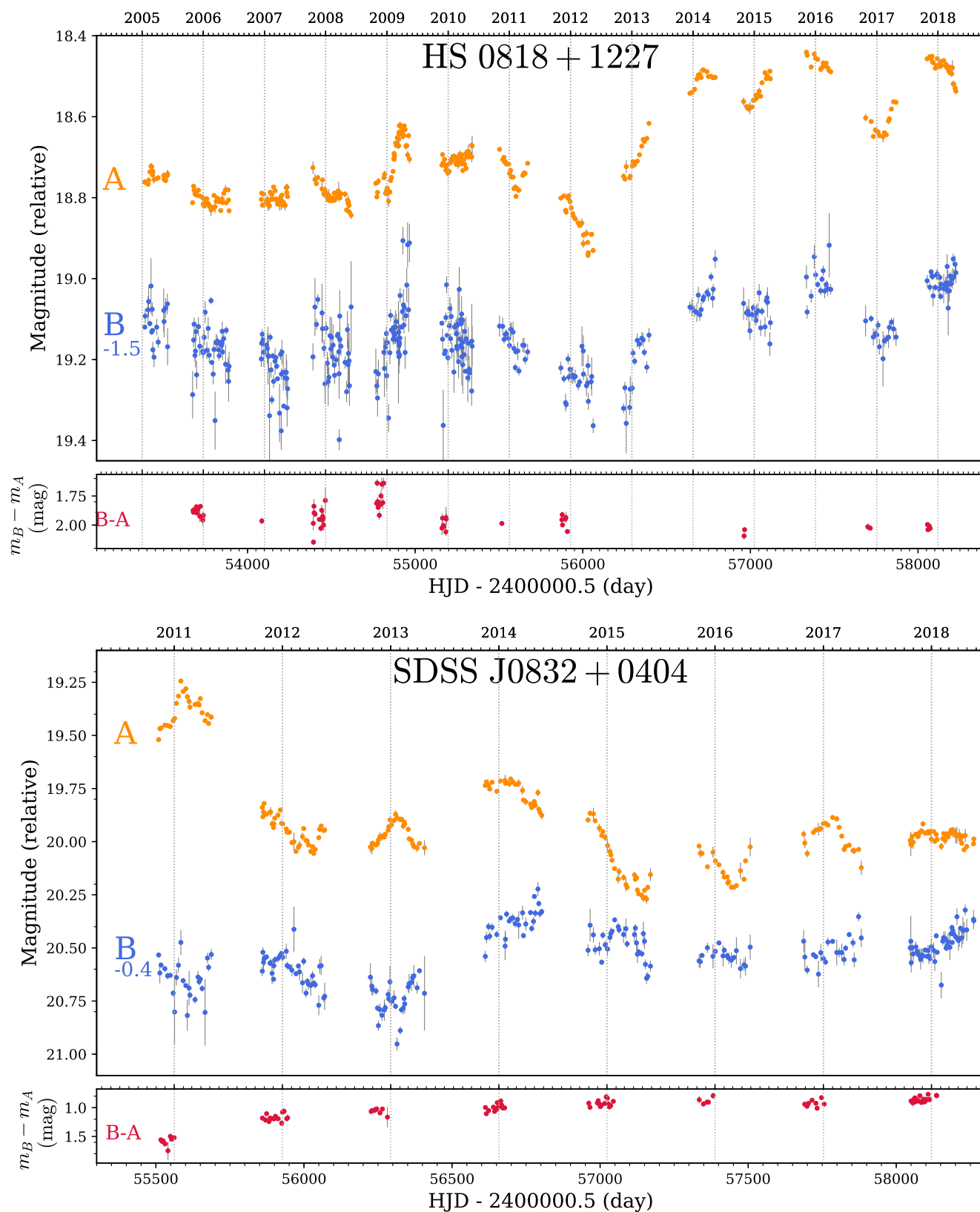


Fig. B.1. continued.

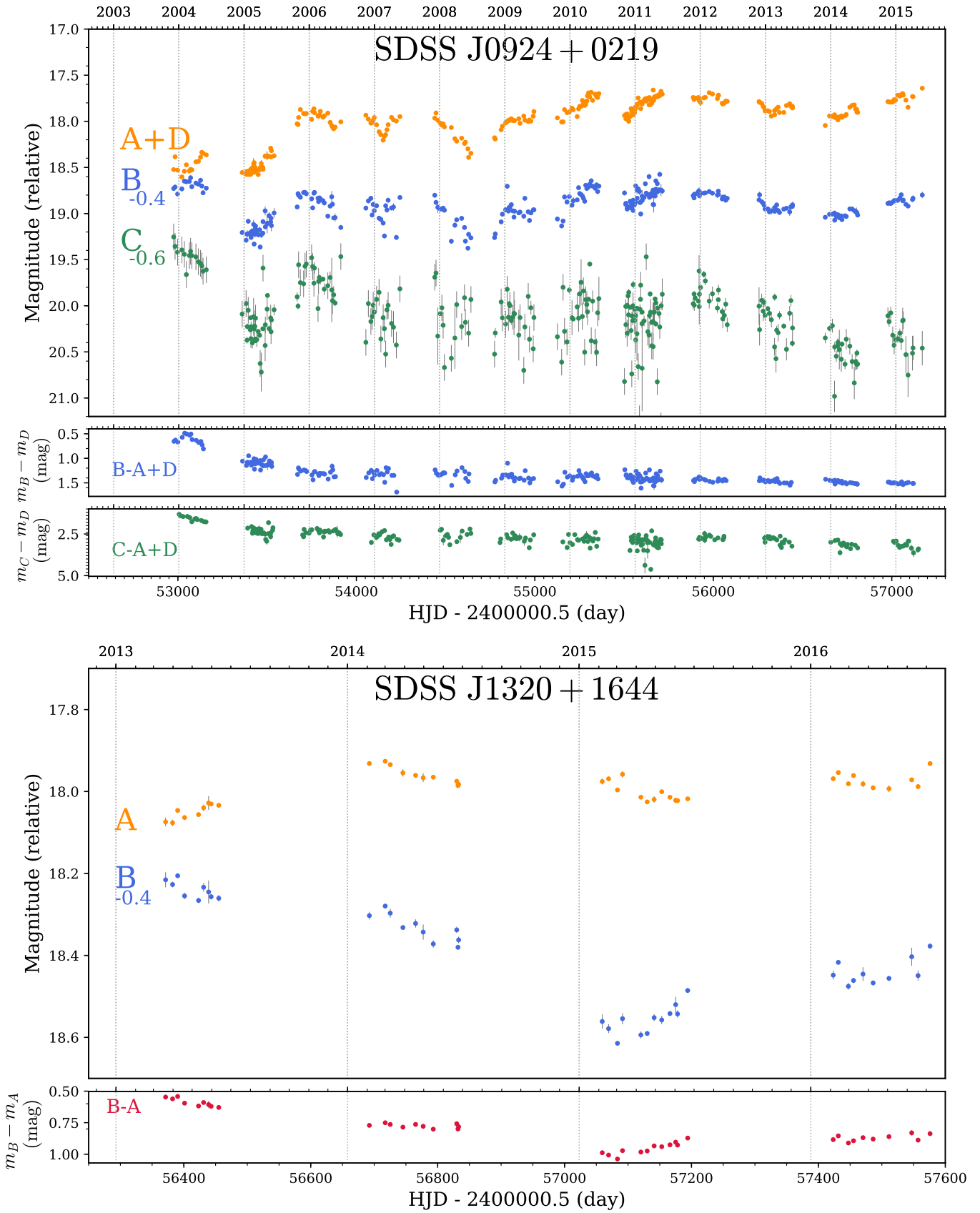


Fig. B.1. continued.

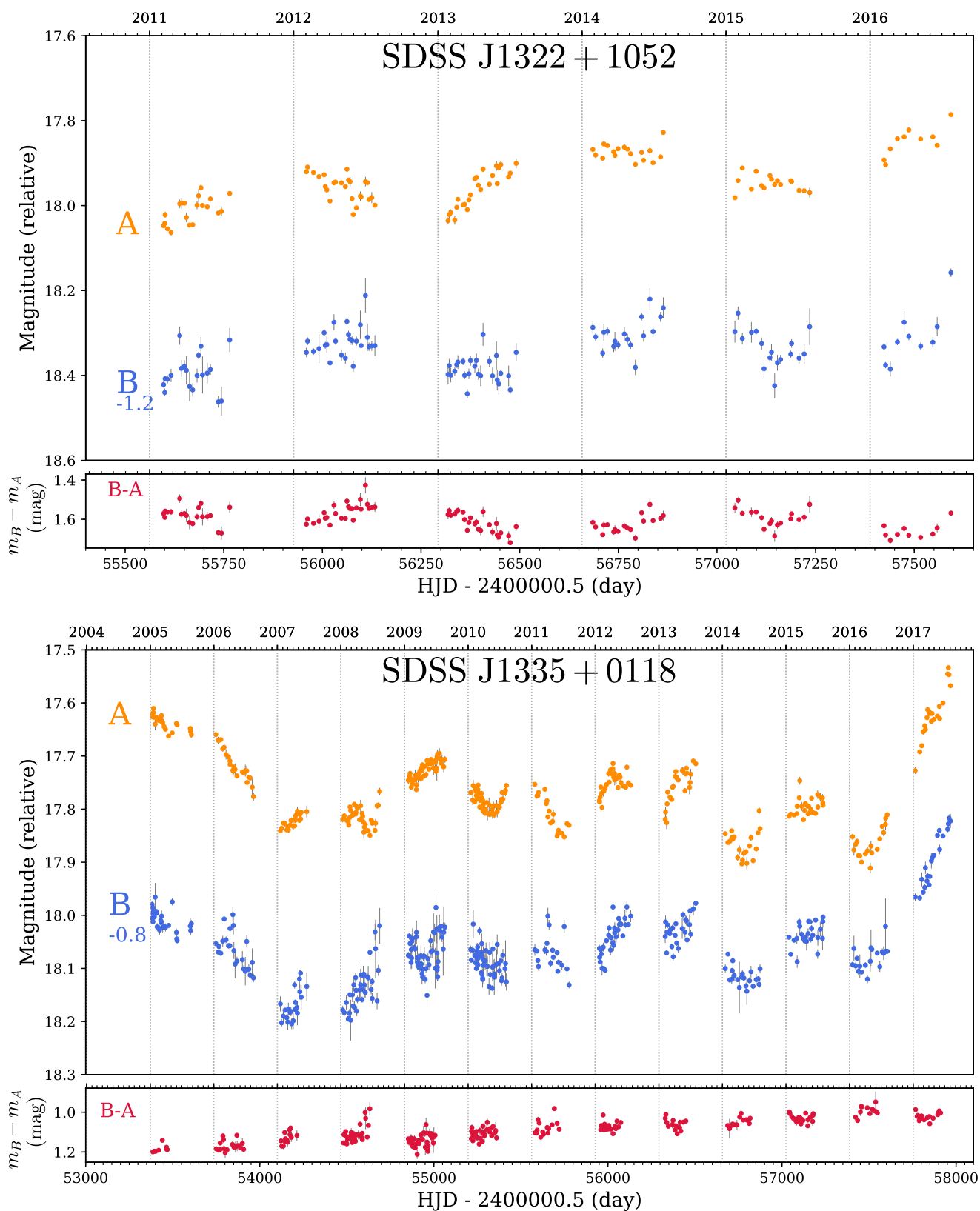


Fig. B.1. continued.

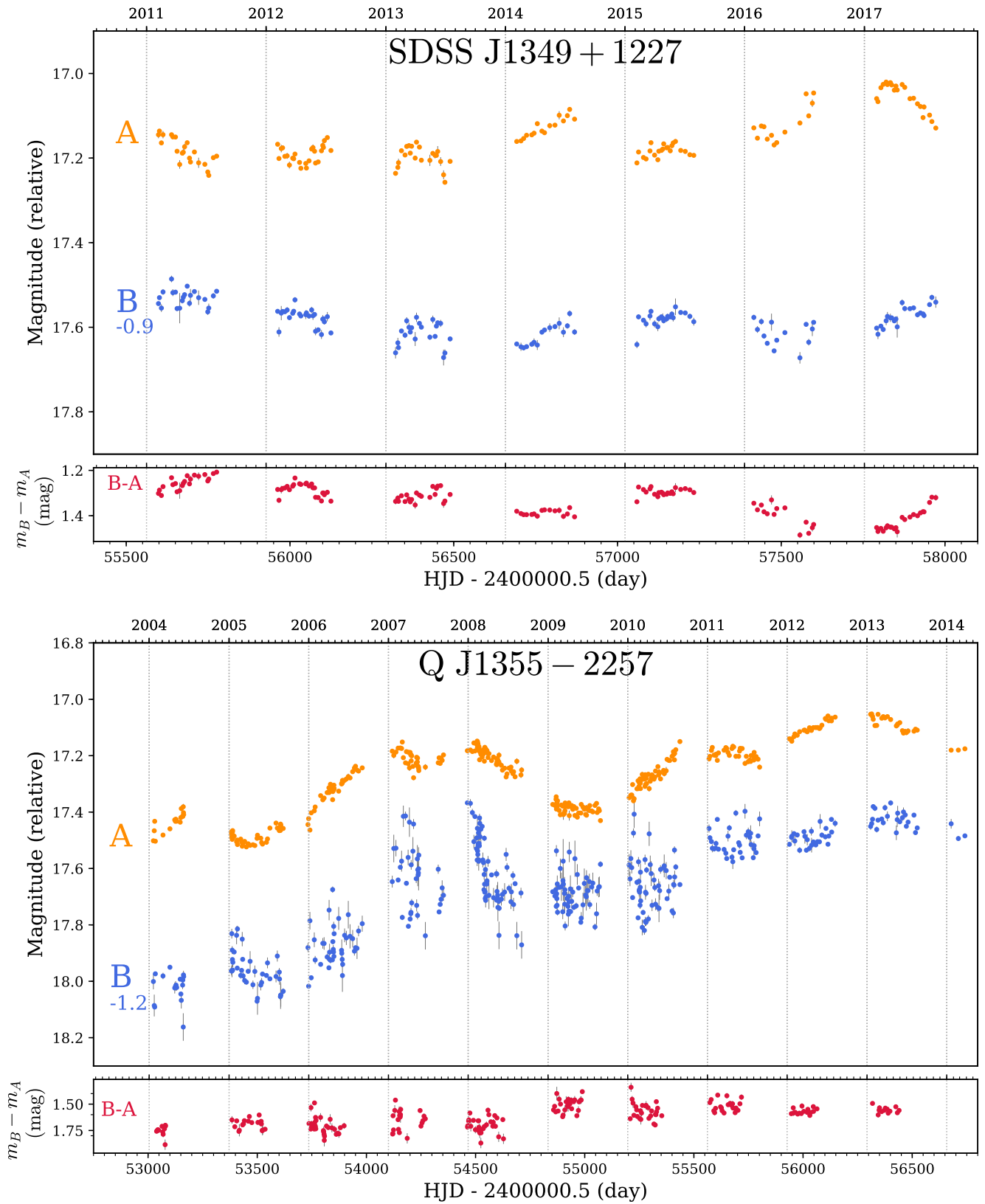


Fig. B.1. continued.

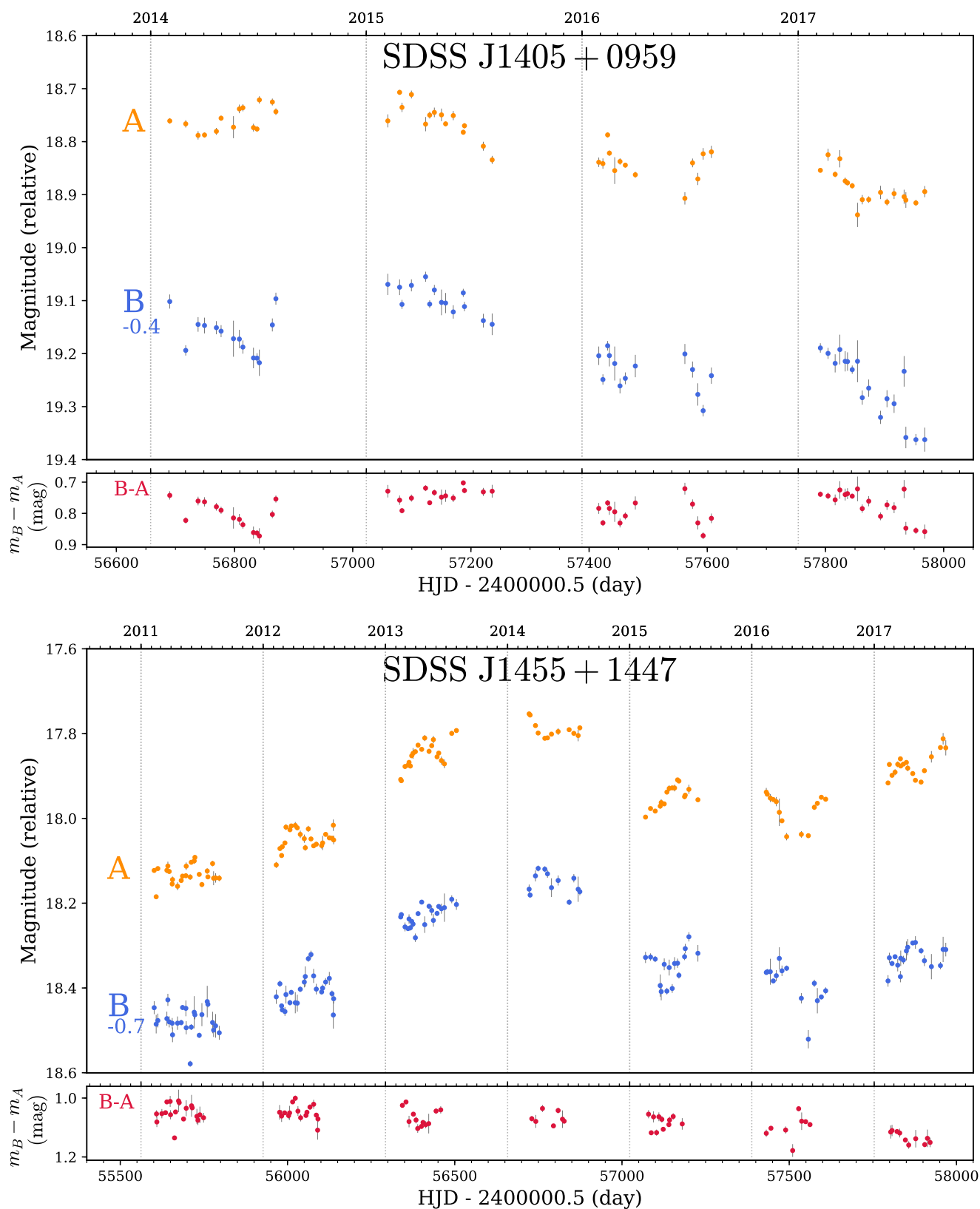


Fig. B.1. continued.

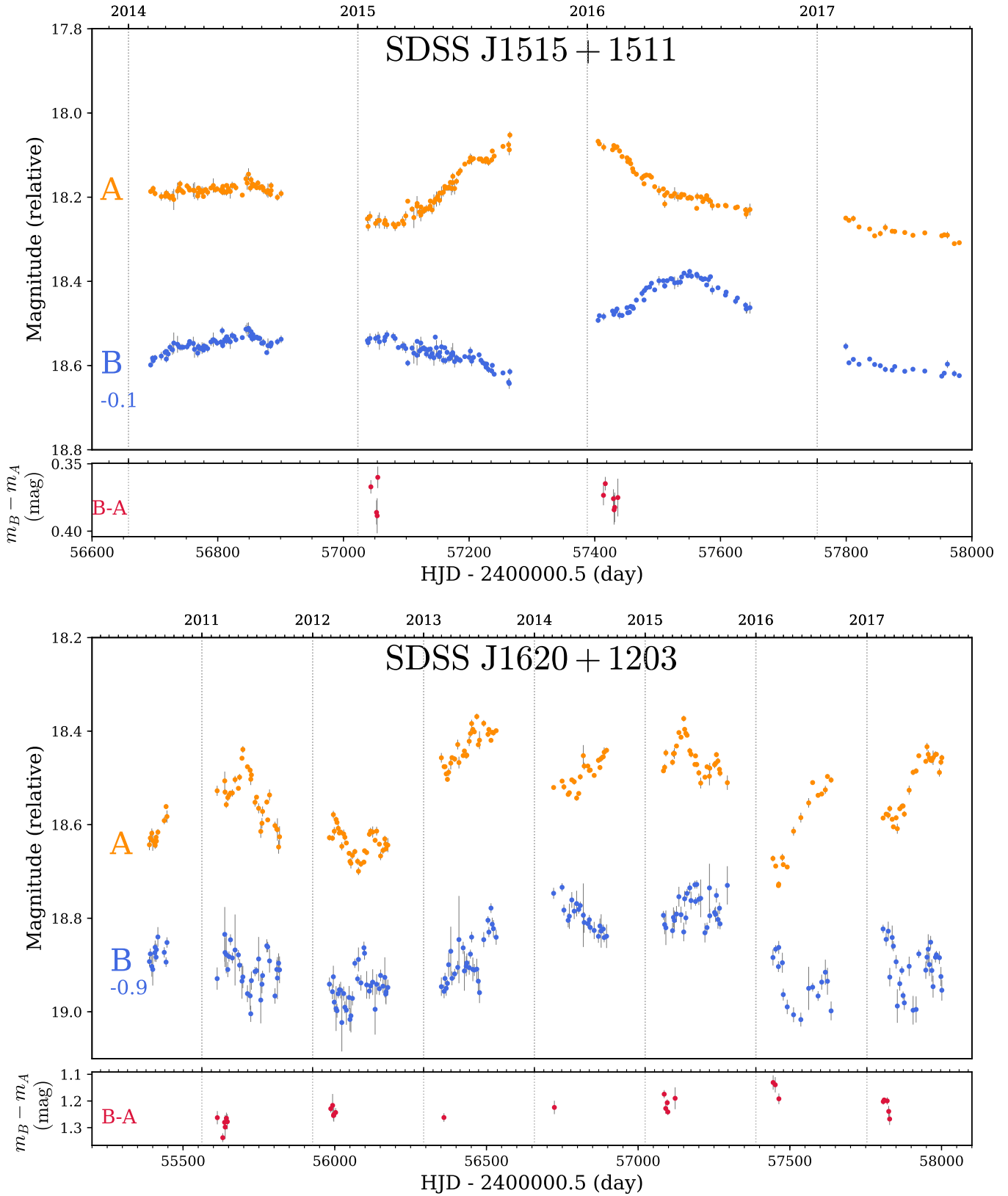


Fig. B.1. continued.

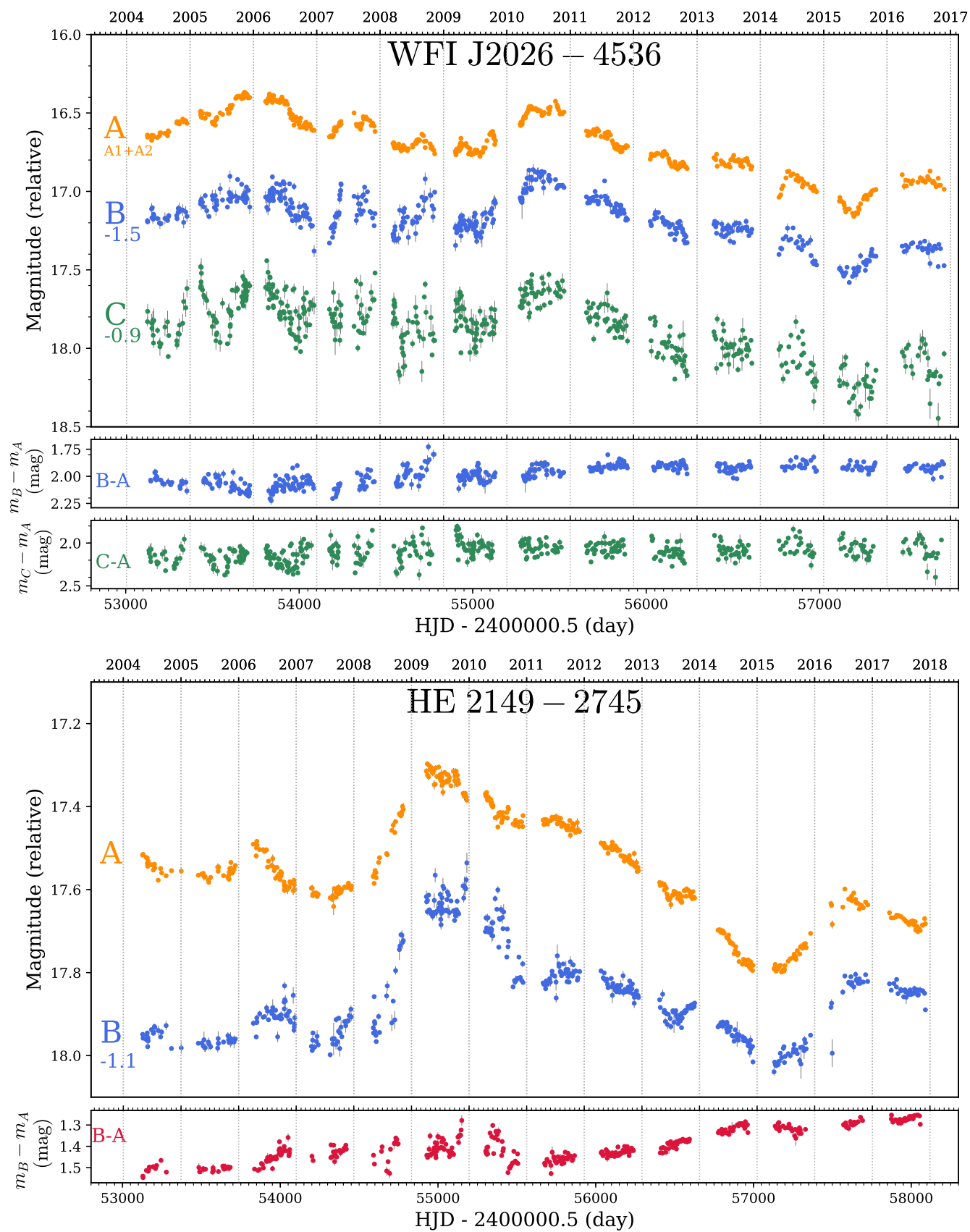


Fig. B.1. continued.

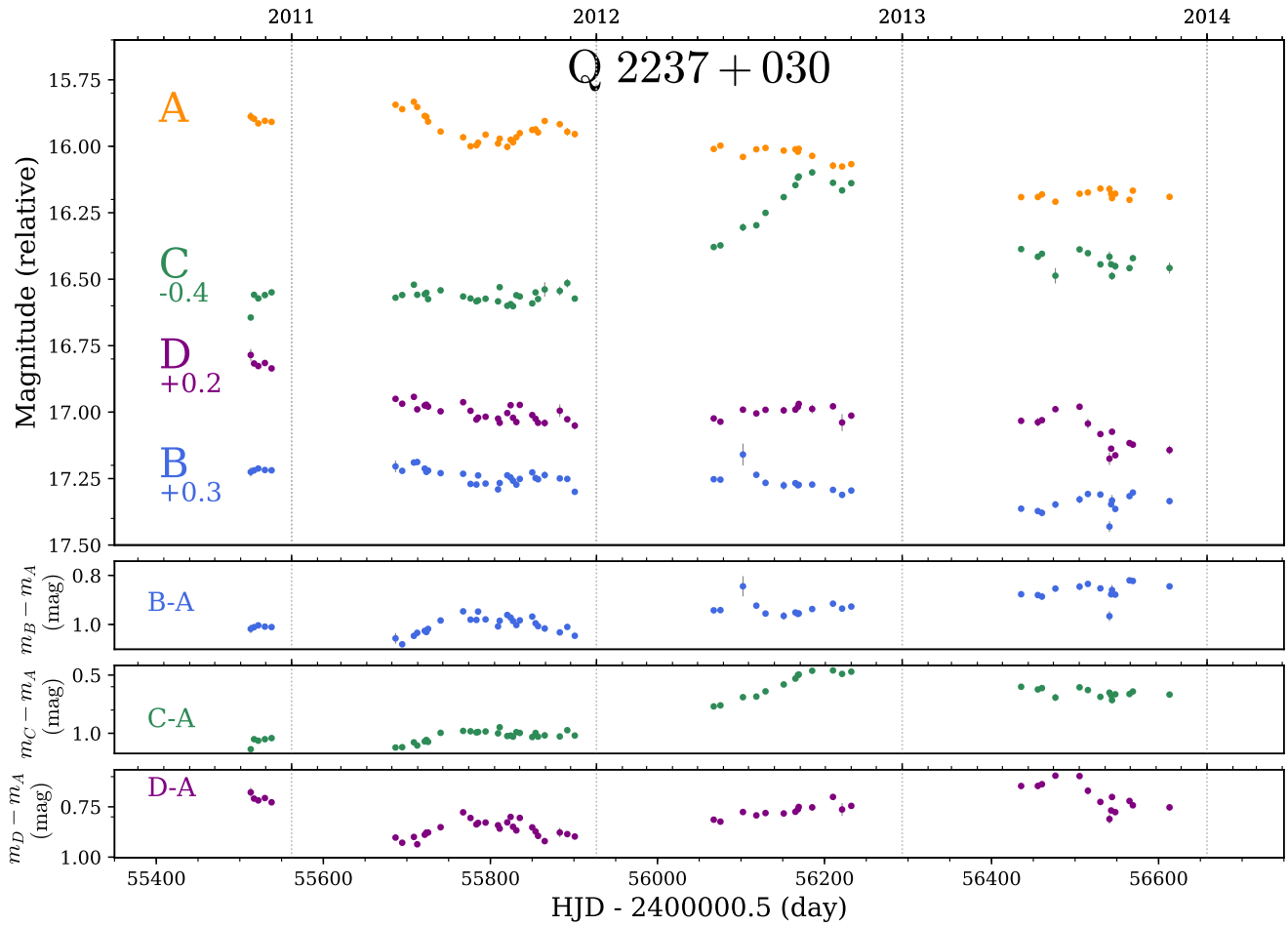


Fig. B.1. continued.