



HAL
open science

Demographic stochasticity drives epidemiological patterns in wildlife with implications for diseases and population management

Sébastien Lambert, Pauline Ezanno, Mathieu Garel, Emmanuelle Gilot-Fromont

► **To cite this version:**

Sébastien Lambert, Pauline Ezanno, Mathieu Garel, Emmanuelle Gilot-Fromont. Demographic stochasticity drives epidemiological patterns in wildlife with implications for diseases and population management. *Scientific Reports*, 2018, 8 (1), 10.1038/s41598-018-34623-0 . hal-02493521

HAL Id: hal-02493521

<https://hal.science/hal-02493521v1>

Submitted on 26 May 2020

HAL is a multi-disciplinary open access archive for the deposit and dissemination of scientific research documents, whether they are published or not. The documents may come from teaching and research institutions in France or abroad, or from public or private research centers.

L'archive ouverte pluridisciplinaire **HAL**, est destinée au dépôt et à la diffusion de documents scientifiques de niveau recherche, publiés ou non, émanant des établissements d'enseignement et de recherche français ou étrangers, des laboratoires publics ou privés.



Distributed under a Creative Commons Attribution 4.0 International License

SCIENTIFIC REPORTS



OPEN

Demographic stochasticity drives epidemiological patterns in wildlife with implications for diseases and population management

Sébastien Lambert^{1,2}, Pauline Ezanno³, Mathieu Garel² & Emmanuelle Gilot-Fromont^{1,4}

Infectious diseases raise many concerns for wildlife and new insights must be gained to manage infected populations. Wild ungulates provide opportunities to gain such insights as they host many pathogens. Using modelling and data collected from an intensively monitored population of Pyrenean chamois, we investigated the role of stochastic processes in governing epidemiological patterns of pestivirus spread in both protected and hunted populations. We showed that demographic stochasticity led to three epidemiological outcomes: early infection fade-out, epidemic outbreaks with population collapse, either followed by virus extinction or by endemic situations. Without re-introduction, the virus faded out in >50% of replications within 4 years and did not persist >20 years. Test-and-cull of infected animals and vaccination had limited effects relative to the efforts devoted, especially in hunted populations in which only quota reduction somewhat improve population recovery. Success of these strategies also relied on the maintenance of a high level of surveillance of hunter-harvested animals. Our findings suggested that, while surveillance and maintenance of population levels at intermediate densities to avoid large epidemics are useful at any time, a 'do nothing' approach during epidemics could be the 'least bad' management strategy in populations of ungulates species facing pestivirus infection.

The emergence and persistence of infectious diseases in wildlife are of increasing concern^{1,2}, as they represent a threat to public health (e.g., rabies, avian influenza), cause economic and food safety issues in veterinary health (e.g., bovine tuberculosis) and represent conservation issues (e.g., facial tumour disease in Tasmanian devils *Sarcophilus harrisi*)³. The key role of wildlife in disease emergence contrasts with the paucity of management options of known efficacy when epidemics emerge in wildlife⁴ and brings to light the need to better understand pathogen invasion and persistence in wildlife populations and to identify relevant options for disease management. When management options are carried out in the field, they should be monitored in an active adaptive management approach in order to improve scientific knowledge during the management process⁵. For example, the recent assessment concerning brucellosis in the Greater Yellowstone Area underlined that several management actions were not monitored for scientific assessment of effectiveness, which led to uncertainty on the efficacy of some measures and slower learning process⁵.

Unlike domestic populations, wildlife interacts with a varied and unpredictable environment⁶, and has complex processes of population dynamics that may affect disease emergence and propagation⁷. Identifying the factors that drive pathogen invasion and persistence in wildlife thus requires better accounting for the biological and ecological characteristics of the host populations⁷⁻⁹. To this end, mathematical modelling is often the only way to compare management strategies in such populations, as experimental approaches can rarely be implemented. Modelling has been used successfully in the past, in a non-epidemiological context, to predict optimal harvesting strategies of exploited populations¹⁰⁻¹². In particular, given the importance of environmental variability on population dynamics, recent modelling approaches have shown that the demography of structured populations

¹Université de Lyon, Université Lyon 1, UMR CNRS 5558 Laboratoire de Biométrie et Biologie Evolutive, Villeurbanne, France. ²Office National de la Chasse et de la Faune Sauvage, Unité Ongulés Sauvages, 5 allée de Bethléem – ZI Mayencin, 38610, Gières, France. ³BIOEPAR, INRA, Oniris, 44307, Nantes, France. ⁴Université de Lyon, VetAgro Sup, Marcy l'Etoile, France. Correspondence and requests for materials should be addressed to S.L. (email: sebastien.lambert@univ-lyon1.fr)

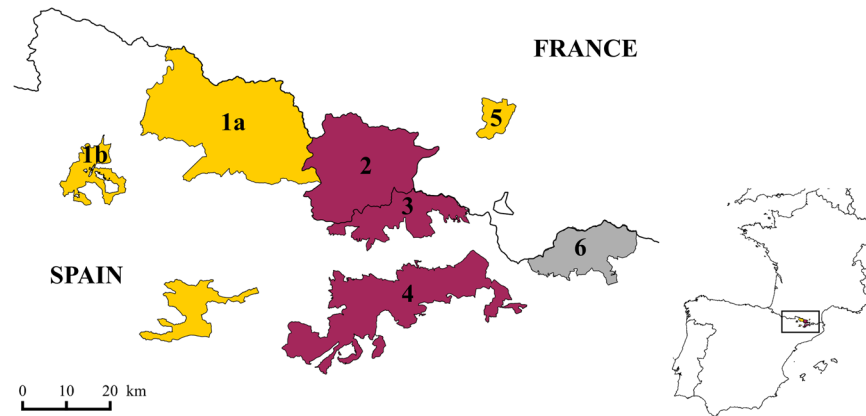


Figure 1. Map of Eastern Pyrenees showing for Pyrenean chamois the most studied hunting reserves in France and Spain (QGIS Development Team (2018). QGIS Geographic Information System. Open Source Geospatial Foundation Project. <http://qgis.osgeo.org>). 1a: Alt Pallars-Aran National Hunting Reserve (NHR), Northern Sector; 1b: Alt Pallars-Aran NHR, Southern Sector (Boi); 2: Principality of Andorra; 3: Cerdanya-Alt Urgell NHR; 4: Cadí NHR; 5: National Game and Wildlife Reserve of Orlu; 6: Freser-Setcases NHR. In purple (cluster 2): severe outbreaks followed by quick population recovery and decrease in virus circulation^{38,39}. In yellow (cluster 3): outbreaks followed by decreasing trends or absence of population recovery and an endemic situation of the infection^{30,40,41}. In grey: persistence of the virus without any negative impact on population size^{39,41}. See text and Figure 2 for the definition of clusters 2 and 3.

is better taken into account by stochastic than deterministic approaches¹³. Beyond environmental stochasticity, demographic stochasticity, defined as the variation in dynamics of small populations owing to the probabilistic nature of individual processes, such as birth, death or pathogen transmission¹⁴, can also be in play in small populations. In particular, stochastic processes generate a risk of population/virus extinction^{15,16} that also needs to be accounted for when predicting epidemiological outcomes and assessing related management issues. Predicting the emergence and persistence of pathogens in wildlife populations and the related efficacy of their management thus requires that the complex interplay between contact structure, pathogen virulence and the unpredictable inter-annual variation in population growth rates be taken into account^{9,17}.

Stochastic epidemiological modelling can help investigate such complex wildlife disease system and understand the underlying processes of pathogen transmission^{8,18}. It provides an integrated mechanistic representation of the system, proven to be useful in testing for biological assumptions¹⁹ and assessing disease management strategies^{20,21}. For instance, evaluation with stochastic models has been used to demonstrate that populations could be protected effectively at lower cost by targeting only large outbreaks²², or to reassess current strategies when they appear ineffective²³.

Among wild-living species, large herbivores are keystone species that shape the structure, diversity, and functioning of most terrestrial ecosystems²⁴ and provide substantial resources, supplying rural communities with goods and economic income²⁵. The management of large herbivore species relies on a sound knowledge of population biology, that should include the effects of management on diseases in natural populations²⁶, and particularly emerging diseases, which are a potential threat to these animals²⁷. Among emerging wildlife diseases threatening large herbivores, pestiviruses are relevant biological models of epizootics caused by domestic-wildlife transmission as documented in numerous species²⁸, in particular in wild boar (*Sus scrofa*)²⁹ and Pyrenean chamois (*Rupicapra pyrenaica pyrenaica*)³⁰. The latter species is an emblematic ungulate in the Pyrenean mountain, distributed widely from west to east of the chain. In 2010–2011, the estimated minimum population size was around 31,160 in France, 22,799 in Spain and 666 in Andorra³¹. While some populations are not hunted such as in the Pyrenean National Park in France³², most are under game use with hunting rates varying between 5–15%. Populations are managed mainly by hunting federations in France, and by National Game Reserves in Spain³³. In this species, the first outbreak of pestivirus, reported in 2001 in Spain³⁴, caused a 42% decrease in population size³⁰. The virus was typed as Border Disease Virus (BDV) of genotype BDV-4^{35–37}. New cases then occurred in Spain, the Principality of Andorra and France, leading to multiple outbreaks that caused major decreases in Pyrenean chamois populations^{38–40}, while the infection was expanding westward^{41,42}. However, later investigations traced back the entry of pestivirus in chamois populations between 1989 and 1991^{42–44}.

The transmission dynamics of Pestivirus is still not clearly explained by current knowledge of pestivirus infection, and uncertainties remain on possible management options. Three epidemiological patterns have been observed among monitored populations (Fig. 1)⁴⁵, with outbreaks followed either by quick population recovery and decrease in virus circulation or by decreasing trends and an endemic situation of the infection, suggesting negative long-term impacts of the virus on population dynamics^{45,46}. The virus has also been found to persist in some cases without any negative impact on population size⁴¹. Possible explanations for this variation include pathogen characteristics (e.g., variation in virulence), host populations (e.g., immunogenetic characteristics driving host susceptibility), as well as the environment (e.g., resource availability)⁴¹. In addition, whether this variation in transmission dynamics has consequences on the efficacy of management options remains unknown.

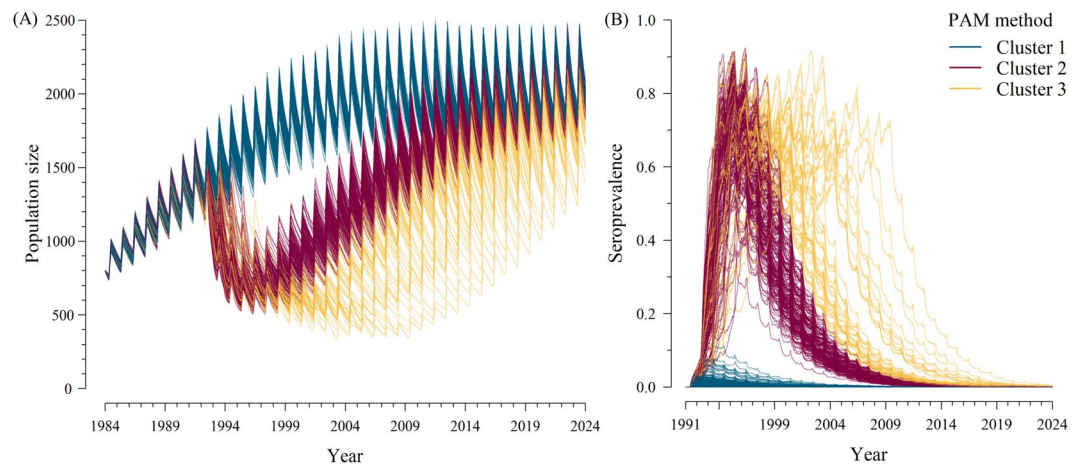


Figure 2. Evolution of population size (A) and seroprevalence (B) over simulation time for PAM clusters. Curves: model replications (400) of a scenario without management strategies and virus introduction in 1991, partitioned in three groups according to PAM algorithm (in blue: 220 replications in cluster 1, in purple: 140 replications in cluster 2, in yellow: 40 replications in cluster 3).

Our objective was to evaluate the role of demographic stochastic processes in governing epidemiological patterns of pestivirus spread in Pyrenean chamois populations, and to assess related implications for disease and population management. To address these issues, we developed a stochastic counterpart of a published deterministic model of pestivirus spread⁴³. The modelling process benefits from a long-term demographic and epidemiological survey performed on the population of Pyrenean chamois in the Orlu natural reserve in France^{40,47}. These empirical data offered the rare opportunity to combine capture-mark-recapture demographic estimates⁴⁸ with serological surveys and advanced statistical modelling to give a realistic representation of the biological system. The deterministic version of the model already takes into account host seasonal ecology and behaviour, and thus adequately represents observed seasonal prevalence variation⁴³ that may interact with management actions⁴⁹. The stochastic version of the model has been developed to represent rare events and to predict virus fade-out, which has been observed in some populations⁵⁰ and cannot be accounted for with a deterministic approach. First, we analysed predicted epidemiological patterns using cluster analysis of replications⁵¹. Second, using global sensitivity analysis⁵², we identified key parameters that influence virus persistence and epidemic size, in order to identify populational and environmental factors which, along with demographic stochasticity, contributed to explaining the variability of epidemiological dynamics. Third, we evaluated three management scenarios classically used in wildlife (e.g.^{53,54}): modulation of non-selective culling (hunting), selective culling (test-and-cull of infected animals), and vaccination. In large herbivores, some species are the target of policies to conserve declining populations, while others are under exploitative management by hunting. To provide realistic management conclusions, and because these two contrasted cases exist in Pyrenean chamois, we evaluated disease management strategies in both hunted and protected populations.

Results

Model predictions and cluster analysis. Figures 2A and 2B illustrate the results of 400 replications of the scenario without management strategies. Outcomes differed markedly after virus introduction in 1991. However, pestivirus infection faded out in all 400 replications less than 20 years after virus introduction. In half of the replications, extinction occurred ≤ 4 years after virus introduction.

The optimal number of clusters using the average silhouette width was 3 for all methods, except for the single linkage method (see Supplementary Table S1 and Supplementary Figs S1 and 2). The discrimination of cluster 1 was similar with all methods, while distinction between clusters 2 and 3 was sensitive to the method but qualitatively similar (Table S1). We chose in the following to use PAM as the reference method for clustering (Table 1 and Fig. 2A and B), which was quantitatively the same as using complete linkage and UPGMA.

All methods distinguished a first cluster of 220 replications with a limited level of population invasion (maximal seroprevalence: 12%), few births of persistently infected (PI) animals over the duration of simulation (maximal cumulative number of PI animals: 4), an early fade-out of the virus (average duration of persistence less than one year), and no long-term impact on population growth (Table 1). The other two clusters corresponded to virus propagation associated with population decline: cluster 2 was associated with relatively short epidemics (average time to extinction: 6.2 years), while replications belonging to cluster 3 were characterized by longer persistence (average time to extinction: 10.3 years) and higher virus-related losses (Table 1 and Fig. 2A and B).

Sensitivity analysis. Depending on the output considered, the parameters retained contributed between 84% and 98% to the output variance (Fig. 3). Aside from the interaction between the infection-related mortality of T (Transiently infected) animals μ^T and the infection-related mortality of P (Persistently infected) animals μ^P (see Table 2 for parameter definitions), no first order interactions accounted for more than 5% of the output variance.

	Cumulative epidemic size in P	Cumulative number of infection-related losses	Time between virus introduction and its extinction (years)	Seroprevalence 10 years after virus introduction
Cluster 1 (220 replications)	0 [0–1]	24 [3–65]	0.9 [0.6–1.4]	0 [0–0.004]
Cluster 2 (140 replications)	35 [26–40]	1185 [982–1307]	6.2 [4.9–7.9]	0.18 [0.13–0.28]
Cluster 3 (40 replications)	46 [34–58]	1408 [1327–1857]	10.3 [8.9–14.8]	0.55 [0.39–0.77]

Table 1. Output values for cluster medoids with PAM and 80% credibility interval within each cluster (in brackets).

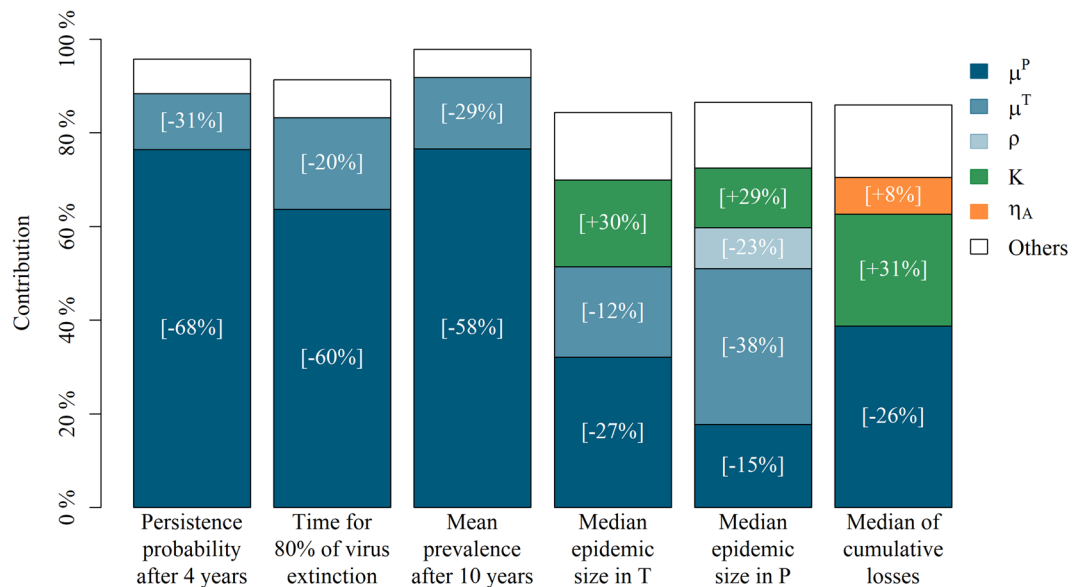


Figure 3. Contribution of model parameters to output variations and relative variation (in brackets) in each output induced by a 25% increase in each parameter. Parameters whose main effect or interaction with another parameter accounted for more than 5% of the output variance were retained. Parameters accounting for less than 5% of the output variance were grouped, and the sum of the contributions was equal to model R^2 . Six aggregated outputs were analysed: for all replications, including those in which the infection had faded-out, we considered the probability of virus persistence 4 years after virus introduction and the time after virus introduction needed to reach a probability of 80% of virus extinction in the population; for replications where the virus persisted more than 4 years after virus introduction, we considered the median cumulative epidemic size in T and P animals over the simulation time, the median cumulative number of infection-related losses over the simulation time, and the mean seroprevalence 10 years after virus introduction. Parameter definitions can be found in Table 2.

The main parameters contributing to output variation were μ^P (between 18% and 77% of output variance) and μ^T (between 12% and 33% of output variance). A 25% increase in these parameters induced marked relative decreases of the outputs (ranging from 12% to 68%).

The carrying capacity K was also found to partly contribute (between 13% and 24%) to the variance of three outputs: the median cumulative number of T and P animals, and the median cumulative number of infection-related losses (Fig. 3). A 25% increase of K induced an increase of about 30% of these outputs. Finally, the probability of abortion ρ and the fertility rate of adult females η_A had a less marked effect (<10%) on only 1 of the 6 outputs monitored.

Management strategies. *Efficacy of surveillance to detect epidemics.* Efficacy of surveillance was measured as the number of replications in which management strategies were implemented divided by the number of replications in which there was a pestivirus epidemic (i.e. in which the virus did not fade-out early). In the protected population, efficacy was greater than 85% (range: 88–95%) when surveillance and/or carcass collection was high, and decreased to 27% when sampling effort was low for both protocols. In this context, low carcass collection (2.5% of the total population size) and high surveillance (20% of carcasses analyzed) appeared as the best compromise between sampling effort and efficacy. Management strategies were implemented in fewer replications in the case where populations were hunted, with a marked gain where more than half of the animals harvested were analyzed (efficacy of 60%) as compared to scenarios where only 15% were analyzed (efficacy of 11%).

Description (dimension)		Value	References
Demographic parameters			
η_{Sa}^{max}	Fertility rate of subadult females, maximum (births per female, annual)	0.30	*
η_A	Fertility rate of adult females (births per female, annual)	0.90	72,*
η_O	Fertility rate of old adult females (births per female, annual)	0.90	72,*
η_{VO}	Fertility rate of very old adult females (births per female, annual)	0.50	*
μ_B^{min}	Probability of mortality of newborns, minimum (annual)	0.362	77
μ_B^{max}	Probability of mortality of newborns, maximum (annual)	0.85	†
μ_{Juv}^{min}	Probability of mortality of juveniles, minimum (annual)	0.218	*
μ_{Juv}^{max}	Probability of mortality of juveniles, maximum (annual)	0.90	†
$\mu_{Sa\varphi}$	Probability of mortality of subadult females (annual)	0.052	*
$\mu_{Sa\delta}$	Probability of mortality of subadult males (annual)	0.068	*
$\mu_{A\varphi}$	Probability of mortality of adult females (annual)	0.037	*
$\mu_{A\delta}$	Probability of mortality of adult males (annual)	0.048	*
$\mu_{O\varphi}$	Probability of mortality of old adult females (annual)	0.078	*
$\mu_{O\delta}$	Probability of mortality of old adult males (annual)	0.100	*
$\mu_{VO\varphi}$	Probability of mortality of very old adult females (annual)	0.146	*
$\mu_{VO\delta}$	Probability of mortality of very old adult males (annual)	0.185	*
δ	Sex ratio	0.50	†
K	Carrying capacity	2,000	†
d	Strength of density dependence	0.0014	*
Epidemiological parameters			
$1/\alpha$	Duration of maternal immunity (days)	60	†
$1/\gamma$	Duration of viraemia (days)	51	79
$1/\omega$	Duration of acquired immunity (years)	8	80
ρ	Probability of abortion	0.50	85
β_T	Horizontal transmission coefficient by a transiently infected animal (per day)	0.01	‡
β_P	Horizontal transmission coefficient by a PI animal (per day)	0.48	‡
μ^T	Probability of mortality related to a transient infection (over the duration of viraemia)	0.76	‡
μ^P	Probability of mortality of PI animals (annual)	0.75	90

Table 2. Description and value of demographic and epidemiological parameters. *Calibrated using field data. †Calibrated to reach K at the disease-free equilibrium. ‡Experts knowledge. †Approximate Bayesian Computation (see results in Supplementary Fig. S6).

Efficacy of management measures. In the reference scenario (no management), the hunted and protected populations differed in terms of virus extinction time and epidemic size (Fig. 4): both outputs were lower in hunted than in protected populations. This is due to the difference in population size at virus introduction (larger in protected populations than in the hunted ones), given that both populations had the same initial conditions and a similar carrying capacity K .

Here, we chose to present the results for the highest sampling effort, *i.e.*, a capture rate of 30% and high surveillance and carcass collection, so that effect sizes recorded for the different management scenarios are the strongest expected. In the protected population case, the duration of management measures (around 4 years) was similar for both strategies. Test-and-cull alone reduced the time needed to reach an 80% probability of virus extinction (−15.4%) and was only slightly more effective when combined with vaccination (−18.7%) (Fig. 4). Both methods enabled an increase in population growth (ΔN) over a 10-year period, helping speed-up population recovery (+15.4% and +23.5% respectively).

In the hunted population case, the duration of management measures was also around 4 years and was similar for all methods, except for a ban on hunting (3.7 years) and doubling the hunting rate (9.4 years), in relation with the criteria we used for stopping management measures.

Test-and-cull implemented alone or combined with vaccination contributed weakly and to the same extent to reducing the virus extinction time (−6.3% and −7.2% respectively, Fig. 4) and had virtually no effect (+1.8%) on the 10-year population size recovery.

The efficacy of modulation of hunting on virus extinction time was also low (<5%) and contrasted depending on the strategy: (−2.1% when targeting juveniles, +0.1% for subadults, +0.2% for adult males, +4.9% for adult females, +3.6% for ban on hunting and +0% for doubling the hunting rate). On the population size variation (ΔN) between 1991 and 2001, only a ban on hunting enabled an increase (+10.6%), whereas doubling the hunting rate induced a decrease (−16.7%), and targeted hunting had a much lower impact (−6.2% when targeting subadults, −3.6% for adult females, +2.1% for juveniles and +1% for adult males).

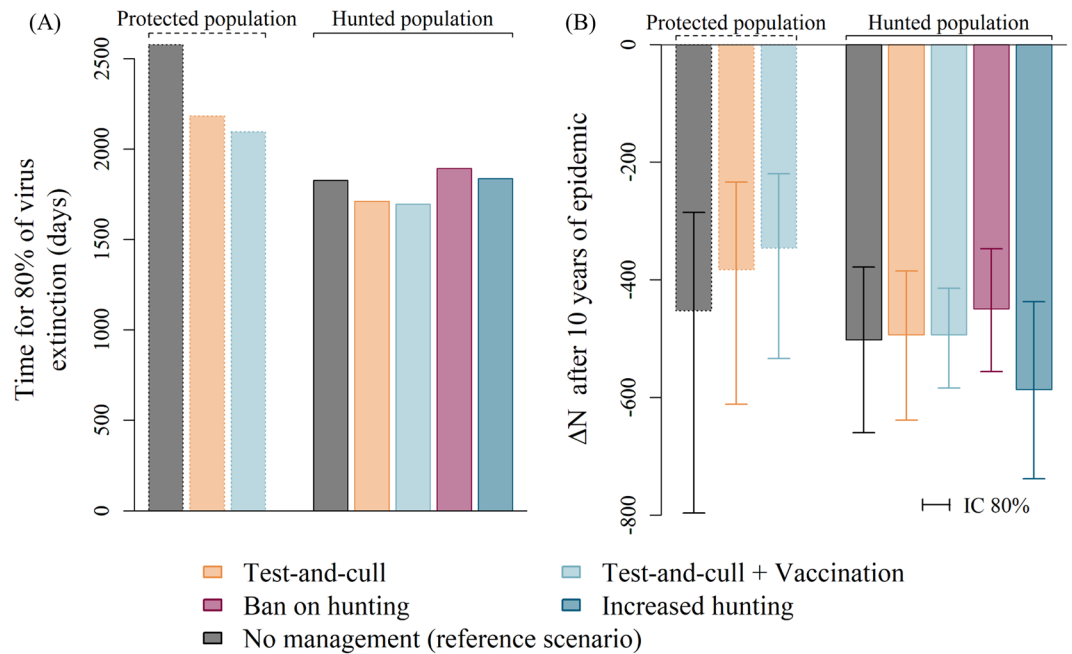


Figure 4. Outputs for management scenarios with test-and-cull and/or vaccination. Time after virus introduction needed to reach a probability of 80% of virus extinction in the population (A) and difference in population size (ΔN) after 10 years of epidemic for replications where the virus persisted more than 4 years after virus introduction (B), in two cases: protected population (dotted line) vs hunted population (solid line), for four scenarios: test-and-cull alone (orange), a combination of test-and-cull and vaccination (light blue), ban on hunting (purple) and increased hunting (darker blue). For each case (*i.e.*, protected vs hunted), the reference scenario (*i.e.*, no management method implemented) is represented in dark grey. Here, we used a capture rate of 30% and high surveillance and carcass collection (Table 3).

Discussion

Stochastic variation is a crucial driver of the epidemiological dynamics in complex wildlife disease systems^{14,55}. Here, the stochastic model distinguished three epidemiological dynamics: early fade-out where the virus did not invade the population and with no long-term population effect (cluster 1), epidemics with population decreases followed by virus extinction and population recovery (cluster 2), and epidemics with population decreases followed by endemic situations before the virus potentially faded out (cluster 3). These predictions were qualitatively distinct from the predictions issued from the deterministic model, that predicted an outbreak followed by an endemic situation⁴³ and for which virus extinction did not belong to the possible outcomes. This difference is mainly due to demographic stochasticity, which can be explicitly accommodated in the new model. In particular, differences among clusters of simulated outcomes are related to variation in the number of PI births (10 to 48 in 4 years in clusters 2 and 3, versus less than 5 in cluster 1). This result, along with the importance of PI mortality in the sensitivity analysis, stresses the pivotal role of PI animals in pestivirus dynamics⁴³. PI individuals are a specific feature of pestiviruses, and although they are uncommon, each of them may infect none to many conspecifics, so that their fate strongly influences epidemic dynamics. Interestingly, the situation predicted in cluster 1 (early fade-out) was predicted in more than half of the replications; thus short, unnoticed virus introductions may be frequent. However, we assumed here no further virus introduction. In real populations, repeated virus introductions may occur, which would decrease the probability of early fade-out, and thus the occurrence of cluster 1.

The dynamics predicted for clusters 2 and 3 closely matched those observed in the field in several Pyrenean chamois populations⁴⁵. An interesting insight of the stochastic model was that it predicted virus extinction in all replications without management within 20 years of virus introduction (55% probability of extinction in less than 4 years), suggesting that pestivirus cannot persist over the long-term in the absence of virus reintroduction. However, this could also be a consequence of the assumption of spatial homogeneity, although we considered social segregation in the model (see 5.3). Spatial structure may be present either within the population if social groups are separated, or by considering surrounding populations in a metapopulation structure. Under a metapopulation structure, a long-term persistence is generally expected⁵⁶. It would be interesting in the future to develop such a spatial model in order to explore the effect of population structure on virus persistence.

In contrast, it failed to represent the situation observed in one Spanish population (Freser-Setcases, Fig. 1), where seroprevalence is high (40% to 70%) but without any detrimental effects on population dynamics. This suggests that other drivers also contribute to virus persistence in Pyrenean chamois populations⁴¹. For example, population structure, low pathogen virulence⁵⁷, genetic differences between host populations⁵⁸, or high herd immunity before virus introduction (either due to cross-immunity with other pestivirus strains, such as border disease virus of ovine origin, or to residual immunity from a previous epidemic)⁴¹ could explain the situation observed in Freser-Setcases.

Description (dimension)		Value
Capture parameters		
μ^{HTP}	Capture rate	[0.02; 0.3]
μ_{Juv}^{HTP}	Probability of test & cull-related mortality of juveniles (over the duration of capture period)	$\mu^{HTP} * 0.07 * N/J$
μ_{Sa}^{HTP}	Probability of test & cull-related mortality of subadults (over the duration of capture period)	$\mu^{HTP} * 0.17 * N/Sa$
$\mu_{A\varphi}^{HTP}$	Probability of test & cull-related mortality of adult females (≥ 2 years) (over the duration of capture period)	$\mu^{HTP} * 0.59 * N/A\varphi$
$\mu_{A\delta}^{HTP}$	Probability of test & cull-related mortality of adult males (≥ 2 years) (over the duration of capture period)	$\mu^{HTP} * 0.16 * N/A\delta$
ν_{Juv}	Probability of vaccination of juveniles (over the duration of capture period)	$\mu^{HTP} * 0.07 * N/J$
ν_{Sa}	Probability of vaccination of subadults (over the duration of capture period)	$\mu^{HTP} * 0.17 * N/Sa$
$\nu_{A\varphi}$	Probability of vaccination of adult females (≥ 2 years) (over the duration of capture period)	$\mu^{HTP} * 0.59 * N/A\varphi$
$\nu_{A\delta}$	Probability of vaccination of adult males (≥ 2 years) (over the duration of capture period)	$\mu^{HTP} * 0.16 * N/A\delta$
$1/\lambda$	Duration of vaccine-induced immunity (years)	2
Hunting parameters		
μ^H	Harvest rate	0.1
μ_{Juv}^H	Probability of hunting-related mortality of juveniles (over the duration of hunting period)	$\mu^H * 2/6 * N/J$
μ_{Sa}^H	Probability of hunting-related mortality of subadults (over the duration of hunting period)	$\mu^H * 1/6 * N/Sa$
$\mu_{A\varphi}^H$	Probability of hunting-related mortality of adult females (≥ 2 years) (over the duration of hunting period)	$\mu_{A\varphi}^H$
$\mu_{A\delta}^H$	Probability of hunting-related mortality of adult males (≥ 2 years) (over the duration of hunting period)	$\mu_{A\delta}^H$
Boolean parameters		
τ	Indicator of rut	0/1
ε	Indicator of birth	0/1
ν	Indicator of gestation	0/1
θ	Indicator of capture	0/1
ϕ	indicator of hunt	0/1

Table 3. Description and value of management-related parameters (N : total population size, J : number of juveniles, Sa : number of subadults, $A\varphi$: number of adult females (≥ 2 years), $A\delta$: number of adult males (≥ 2 years)).

In addition to demographic stochasticity, populational and environmental factors that may further explain the variability of epidemiological dynamics were identified through the sensitivity analysis, by detecting key parameters affecting pestivirus persistence, epidemic size and population dynamics. Our analysis revealed that two demographic parameters, the mortality of transiently and persistently infected individuals and the carrying capacity have a major influence on epidemic sizes and their demographic consequences. Low mortality and high carrying capacity all predicted large epidemics with strong demographic impact especially when combined with high adult fertility. The rationale for this result is that these parameters contribute to the number of PI animals in the population, but also to the number of susceptible animals, which are mostly those between 0 and 2 years old⁴⁰, through the impact of the carrying capacity K on density-dependent processes, especially the mortality of newborns $\mu_B(t)$ and juveniles $\mu_{Juv}(t)$. As a result, a high carrying capacity and a large population size at virus introduction, predicted larger epidemics, while a high carrying capacity and high fertility were associated with strong demographic consequences of epidemics. These predictions match the observed variation in the dynamics of classical swine fever in wild boar populations: local incidence and virus persistence were higher in sites where population size was large and/or close to habitat carrying capacity⁵⁹. More generally, they illustrate the importance of host population dynamics as a key determinant in disease dynamics^{7,60}.

Finally, we used our model to compare management strategies of pestivirus infection in Pyrenean chamois populations. Test-and-cull of infected animals is a major tool in managing pestivirus infections in domestic animals^{61,62}. Here, its efficacy was low ($< 16\%$) with regard to virus extinction and for a trapping effort defined as the highest likely to be performed in natural populations. The combination of test-and-cull with vaccination was slightly better in protected populations, whereas the efficacy of both scenarios was similar in hunted populations. This contrast could be explained by (1) the fact that these scenarios were implemented for 0.6 years longer in protected than in hunted populations; (2) the fact that the reference level (virus extinction probability with no management action) was much lower in the hunted than in the protected population.

Models may be used to test scenarios that have not been implemented in the field, but that could be of more interest if they are predicted to be efficient. Here, vaccination was tested with this aim. Based on the demonstrated existence of cross-immunity between pestiviruses⁶³, vaccines used against Bovine Viral Diarrhoea Virus in cattle are used in sheep. These vaccines induce a neutralizing antibody response in sheep⁶⁴, but their efficacy against experimental infection has not yet been studied to our knowledge in small domestic ruminants, and *a fortiori* in wild-living small ruminants. We nevertheless assumed that an effective vaccine, providing long-lasting immunity, could be administered at high rates and during extended periods. Even considering these very optimistic assumptions in a context of wild populations, the efficacy of vaccination was low ($< 19\%$). This suggests that vaccination is not a relevant option to develop in the present epidemiological situation. A similar result has been found by Woodroffe⁶⁵, who stressed that vaccination is most valuable in small populations with a very high risk of

extinction, whereas in large populations, or over large areas, this treatment is often inappropriate or impractical, so that managing population size, structure or contact between host species could be a much better alternative. This conclusion could change if the epidemiological or population situation calls for strong efforts towards vaccination and if the proportion of effectively vaccinated animals can be elevated to high values⁶⁶.

During a pestivirus epidemic, hunting tended to aggravate the situation, as demonstrated by the results of the scenario with a doubling of the hunting rate. Targeting hunting towards juveniles, while not particularly effective in reducing long-term virus persistence (<2%), was still the most effective type of selective harvest. This can be explained by the fact that targeting juveniles reduces the number of PI and susceptible animals. Targeting the other categories did not reduce virus persistence or improve population recovery. A ban on hunting, which is the most frequently used management option for Pyrenean chamois pestivirus⁴¹, reduced virus persistence only slightly. However, the population size increased between virus introduction and ten years afterwards, as recovery of population due to density-dependent processes (increase in subadult fertility and newborn and juvenile survival following decrease in population size due to virus-related mortality) was quicker if no hunting occurred. A ban on hunting when epidemics are detected thus appears to be the best compromise to improve population recovery. Again, this prediction confirms previous observations on the frequently counter-productive effect of hunting on the management of pestiviruses in wild ungulates^{49,59} and other diseases, in particular tuberculosis^{67,68}. Multiple mechanisms have been involved in this effect of hunting⁶⁹. Here, only density-dependent demographic and epidemiological processes have been accounted for, in particular the loss of herd immunity and weakening of density-dependence due to hunting-related mortality. Other effects, such as social and spatial reorganization, may also occur and worsen the influence of hunting⁶⁷.

It is noteworthy that hunting had different effects when applied during periods of virus infection vs. when infection was not present. Generally speaking, non-hunted populations reach high densities and sustain large epidemics (e.g.²¹). Here, Pyrenean chamois populations that were hunted before virus entry, because of their relatively low population size compared to protected populations, were predicted to experience shorter epidemics. Thus, a generic management scenario for chamois populations would combine hunting in the absence of viruses, to limit population size, and a hunting ban during virus epidemics. When hunting is maintained, selectively targeting young animals appears as a potential solution to reduce virus persistence. Finally, hunting being the only way to gain information on virus transmission in hunted populations, it could be relevant to maintain surveillance by analysing hunter-harvested animals.

Conclusions

Management options for pestivirus infection in Pyrenean chamois populations, as in many wild populations, are limited due to practical constraints, and our evaluation did not identify one absolute option that is both effective and feasible in practice. A reduction or ban on hunting could be the best and easiest method to reduce virus persistence and limit the decrease in population size in hunted populations. In protected areas where hunting cannot be adjusted, a 'do nothing' strategy could be recommended during epidemics considering the limited effects of treatments despite a surveillance effort known to be achieved only in the best-monitored populations ever, and as such probably far from what can be done from a routine perspective over large areas.

Finally, an important and unexpected aspect for the success of management was the importance of the surveillance scheme: management measures can be implemented only when surveillance allows managers to detect an epidemic. Here, the capacity of surveillance systems to detect epidemics varied according to the population considered. In protected populations such as in the Pyrenean National Park, a surveillance based on carcass collection combined with PCR analyses on found-dead animals was effective through either a combination of high carcass collection and a low surveillance protocol, or low carcass collection and high surveillance. Both protocols were almost as efficient as a combination of both high carcass collection and high surveillance. As a high carcass collection (such as in Gonzales and Crampe³²) is difficult to achieve, maintaining a low level of carcass collection with a high number of analyses appears to be the most relevant option.

In hunted populations, which is the most frequent situation in the Pyrenees, the high surveillance protocol (60% of hunter-harvested animals analysed by PCR) was shown to be much more effective than the low one (15% of hunter-harvested animals analysed), and in any case less effective than the protocol based on found-dead animals used in protected populations. This suggests that surveillance based on hunter-harvested animals should maintain a high level of analyses and that hunting should not be stopped but only reduced as much as possible, in order to maintain the required level of surveillance. More generally, refining surveillance and monitoring schemes and analysing their cost and effectiveness may help to design relevant surveillance strategies that contribute both to management efficiency and knowledge improvement⁷⁰.

Material and methods

Population monitoring.

The data used in this study were collected from the population located in the National Game and Wildlife Reserve of Orlu in the eastern French Pyrenees (42.66°N, 1.97°E). The long-term Capture-Mark-Recapture (CMR) monitoring performed since 1984 made it possible to estimate age and sex-specific vital rates of the population⁴⁷, and to provide individual data on pestivirus infection since 1995, when the epidemiological survey started⁴⁰. Epidemiological data were also available on hunted animals during the same period (see⁴³ for details). In addition, the minimum population size was annually estimated from a unique census performed in late June between 1984 and 2008. Although this approach systematically underestimates the true population size to a variable extent⁷¹, it should provide a relatively fair overview of the long-term trend in abundance of our population due to the very contrasted demographic periods encountered⁴³. Monitoring of this population has been performed in accordance with ethical conditions of specific prefectural decree (n°2009-014) and in agreement with the French environmental code (Art. R421-15 to 31 and R422-92 to 94).

Model design concepts and characteristics of the host-pathogen system. The model was structured in age classes and sexes and included three host characteristics of particular interest for assessing population demography: the seasonality of the reproduction cycle and contact structure of the Pyrenean chamois^{72,73}; the density-dependence of newborn and juvenile survival and subadult fertility, which are known to be the first parameters to decrease at high density^{74,75}; and the senescence processes affecting both survival and reproduction^{47,76,77}. Introducing these characteristics in epidemiological models is essential as they can interact with management strategies, such as harvesting, and lead to compensatory mechanisms (e.g., increase in births) which may enhance transmission^{8,49}.

The epidemiological structure of the model included the possibility of transient as well as persistent infections. Pestiviruses are characterized by congenital infection with fetuses infected in early gestation becoming Persistently Infected (PI) individuals, which excrete the virus lifelong and play a major role in spreading the disease. The existence of PI in Pyrenean chamois is suspected rather than proven, as this state is difficult to detect in the field. This is most likely due to the expected rarity of PI animals, their short lifespan and, above all, to the difficulty to differentiate between persistent and transient infection with animals found dead or captured, which can hardly be repeatedly monitored over time. However, PI birth from one experimentally infected female⁷⁸ and virus detection in aborted fetuses⁷⁹ led to suspect the possibility of vertical transmission in Pyrenean chamois. The role of PI animals in the disease spread was also demonstrated in a previous model, as model fit was much better when accounting for their presence⁴³.

Transient infection induces severe clinical signs and long-lasting viraemia in Pyrenean chamois⁸⁰. Accordingly, the associated mortality rate has been estimated as high⁴³. Individuals that have recovered develop an immune response⁸⁰, assumed to be long-lasting, as suggested by the observed increase in seroprevalence with age⁴⁰. We assumed indirect transmission to be negligible because the virus has a limited survival time in the environment⁶¹.

A stochastic epidemiological model in a structured and managed population. Starting from the deterministic model described in Beaunée *et al.*⁴³, we performed three major model extensions. First, we accounted for demographic stochastic processes in order to model rare events and virus fade-out, which has been empirically reported in some populations⁵⁰ and which is very likely to interact with management actions⁴⁹. Second, we considered additional age classes and demographic estimates for old individuals in order to better account for senescence patterns and temporal variation in the age-structure of the population which determines the susceptibility of the population to demographic stochastic processes⁸¹. Third, we used this new model to provide the first insights on how different disease and population management strategies perform in both hunted and protected populations of Pyrenean chamois. The model was in discrete time with a time interval of 1 day. All simulations and further analyses were performed using R 3.2.2⁸².

The population was structured in six age classes: newborns *B* (May and June of the birth year), juveniles *J* (from 1st of July to 30th of June, *i.e.*, [0–1[year), subadults *Sa* ([1–2[years), adults *A* ([2–8[years), old adults *O* ([8–13[years), and very old adults *VO* (≥ 13 years). As sexual maturity is reached from 18 to 20 months, a small proportion of females started breeding in *Sa*, while most started breeding in stage *A*^{83,84}. Old and very old adults were modelled to account for senescence processes affecting both survival and reproduction^{47,76,77}.

The density-dependence of the mortality of newborns and juveniles and the fertility of subadults were represented using sigmoid functions based on explicit variables (*d*: strength of density-dependence, *K*: carrying capacity, *N*: total population size; see Supplementary Equations S(28)–(30)).

We considered six health states (Fig. 5): *S0*, newborns and juveniles protected by maternal immunity, *S*, susceptible to infection, *T*, transiently infected (after horizontal transmission), *R*, immune, *P*, persistently infected (after vertical transmission), and *V*, vaccinated. A sub-state *Rg* was considered in state *R* to identify immune pregnant females infected during pregnancy. Females in *Rg* state remained *Rg* until the end of the birth period, then became *R*.

Newborn health state was determined according to the mother's state at calving (Fig. 5 and Supplementary Fig. S3). *S* female gave birth to *S* calf, *T* female to *R* calf, and *R* female to *S0* calf. Vertical transmission was assumed to occur during the first half of pregnancy and to lead to PI newborns or abortions⁸⁵. Thus, an *Rg* female infected during the first half of pregnancy aborted with probability ρ (Table 2) or gave birth to a *P* calf. An *Rg* female infected during the second half of pregnancy gave birth to a *R* calf. A *P* female gave birth to a *P* calf, but this event was expected to be rare due to the low survival rate of PI individuals⁴³. Vaccinated (*V*) female gave birth to *S* calf. To determine the number of PI births, the proportion of females in age class *X* (*Sa*, *A*, *O*, or *VO*) which became *Rg* at recovery and were transiently infected during the first half (p_{XQ1}) or the second half (p_{XQ2}) of pregnancy, was calculated at each time step (see Supplementary Equations S(20) and S(21)).

The model accounted for the seasonality of the reproductive cycle⁷². During the mating season (from 5th of November to 7th of January), we assumed all individuals to be in contact (indicator of rut $\tau = 0$). Outside this period ($\tau = 1$), adult males formed a group separated from adult females, assuming no contact. Females stayed with juveniles and subadult females^{73,86,87}. Subadult males were assumed to be in contact with both groups (see Supplementary Figs S4 and S5). The birth season ($\varepsilon = 1$) occurred from 30th of April to 1st of July⁸⁸ ($\varepsilon = 0$ otherwise). Hence, the gestation period ($\nu = 1$) lasted from 5th of November (beginning of the mating season) to 1st of July (end of the birth season).

We modelled three management strategies: (1) modulation of non-selective culling (hunting), including ban of hunting, (2) selective culling (test-and-cull), and (3) vaccination. Test-and-cull and vaccination were assumed to be performed during monitoring by CMR. Hunting season lasted from 1st of September to 30th of November (indicator of hunt $\phi = 1$). Capture season lasted from 1st of April to 30th of November (indicator of capture $\theta = 1$). Parameter values associated with management strategies (probability of mortality related to hunting μ^H , probability of mortality related to test-and-cull for *T* and *P* animals μ^{HTP} , and vaccination of susceptible animals ν) are described thereafter (§5.8 Management strategies and Table 3).

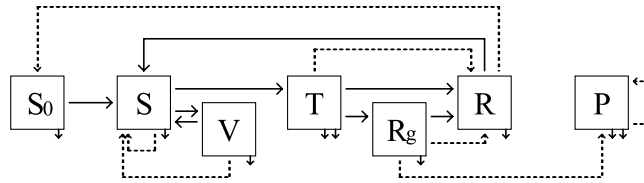


Figure 5. Simplified conceptual model of Pestivirus spread (adapted from Beaunée *et al.*⁴³). Squares represent health states: S_0 , newborns and juveniles protected by maternal immunity, S , susceptible to infection, T , transiently infected, R , immune, R_g , immune females infected during pregnancy, P , persistently infected, and V , vaccinated. Solid horizontal arrows represent flows between health states (loss of maternal antibodies, infection, recovery, loss of acquired immunity, vaccination, and loss of vaccine-induced immunity). Solid vertical arrows represent natural mortality and disease-induced mortality for T and P . Dashed arrows represent births. See Supplementary Fig. S3 for the representation of the complete conceptual model.

Calibration of uncertain parameters. Parameter values (Table 2) were calibrated in Beaunée *et al.*⁴³. However, some parameter values were modified to account for new analyses performed using data collected from the long-term CMR monitoring of the Orly population (Unpublished data). To obtain age-specific estimates of the probability of natural mortality, we fitted a global capture-mark-resighting model on all CMR data collected from 1984 to 2016⁴⁸. All males and females aged between 0 and 20 years at first capture ($n = 388$ and 208 respectively) were included in the model. Survival probabilities were modelled as an additive function of sex, age classes (J , Sa , A , O and VO) and period (before or after 1991, when virus introduction has been estimated by⁴³) and resighting probabilities as an additive function of sex and year. Model estimates were obtained using RMark 2.2.2⁸⁹. Age-specific survival estimates obtained during the period before virus introduction (< 1991 ; Table 2) were those used in our stochastic model.

The carrying capacity K was calibrated using experts' knowledge and set at 2,000 animals. Maximum probabilities of newborn and juvenile mortality and the strength of density dependence d were calibrated so that the disease-free equilibrium of the population was K and to match the time series of counts performed in Orly before virus introduction.

Epidemiological parameters with the least information for their calibration were the rate of horizontal transmission by transiently infected animals, horizontal transmission by PI animals, and probability of transient infection-related mortality. These three parameters were estimated using a deterministic counterpart of the updated model, applying Approximate Bayesian Computation (ABC) approach and data as described in Beaunée *et al.*⁴³ (see results in Supplementary Fig. S6). The probability of mortality of PI animals and the probability of abortion remain unknown in Pyrenean chamois and thus were based on available knowledge in domestic ruminants^{85,90}. Similarly, very few information is available regarding the duration of maternal immunity that we calibrated based on experts' knowledge (Table 2). Finally, the duration of viremia and the duration of acquired immunity were based on empirical and experimental knowledge on Pyrenean chamois^{79,80}.

Stochastic equations for model transitions. Transitions between compartments were modelled as stochastic flows assuming demographic stochasticity. Possible transitions were: mortality M , loss of maternal antibodies Δ , infection Y , recovery Γ , loss of acquired immunity Ω , vaccination Θ , loss of vaccine-induced immunity Λ , hunting Φ , and test-and-cull Φ^{TP} . Each was the outcome of a binomial trial. For multiple transitions from a given compartment, multinomial distributions were used.

Each flow $(1, \dots, j)$ from compartment i was associated with daily rate $\kappa_{ij}(t)$. The probability associated with each event j was⁹¹: $p_{ij} = \left[1 - \exp\left(-\sum_{j \neq i} \kappa_{ij}\right) \right] \cdot \kappa_{ij} / \sum_{j \neq i} \kappa_{ij}$, with $p_{ii} = 1 - \sum_{j \neq i} p_{ij}$ the probability of staying in compartment i .

Births H followed a binomial distribution with probability $1 - \exp(-\eta)$. As newborn orphans are expected to have a very low survival rate, only breeding females still alive at birth time were considered.

The complete system of mathematical equations is given in Supplementary Equations S(1)–(30). The transitions between age groups were not included in these equations because they were considered as deterministic discrete events happening each 1st of July, with every B , J , and Sa individual going into the next age class (J , Sa , and A respectively), 1/6 of A becoming O (the adult stage lasting $7 - 2 + 1 = 6$ years), and 1/5 of O becoming VO (the old adult stage lasting $12 - 8 + 1 = 5$ years).

Initial conditions and model outputs. The model ran for 40 years starting in 1984, when yearly censuses started. The initial population composition (age and sex classes) was based on the stable structure observed at disease-free equilibrium with the updated deterministic counterpart of the model without management strategies. The initial population size was 800 individuals (minimum population size in 1984 estimated from ground counts), and all animals were susceptible. The virus introduction corresponded to the birth of a PI individual in the middle of the birth period in 1991⁴³. The virus was assumed not to be further reintroduced.

We evaluated disease spread, pathogen persistence and its effect on population through the following model outputs: epidemic size (cumulative number of T or P animals over the simulation time), cumulative number of infection-related losses (infection-related deaths of T and P animals and abortions), difference in population size (ΔN) between virus introduction and 10 years afterwards, time (in days) between virus introduction and fade-out (assumed to occur when there was no longer a T or P animal, and no longer an R_g female), and seroprevalence 10 years after virus introduction. In addition, we evaluated management-related outputs (§5.8 Management

strategies): duration of management measures and importance of sampling effort (number of hunter-harvested animals or number of carcasses found, and number of analyses performed).

To facilitate analyses, we considered the following aggregate outputs:

- For all replications, including those with early infection fade-out, we considered the probability of virus persistence 4 years after virus introduction (*i.e.*, number of replications in which the virus persisted among the total number of replications) and the time needed after virus introduction to reach a probability of 80% of virus extinction in the population.
- For replications where the virus persisted over more than 4 years, we considered the median cumulative epidemic size in T and P animals and the median cumulative number of infection-related losses over the simulation time, as well as the mean seroprevalence 10 years after virus introduction.

Cluster and sensitivity analyses. To assess if demographic stochasticity drives epidemiological patterns, we performed a cluster analysis of model stochastic repetitions. We used 400 repetitions of a scenario without management strategies, and calculated the distance between each pair of repetitions using normalized Euclidean distance for the following outputs: cumulative number of P animals, cumulative number of infection-related losses, number of days between virus introduction and fade-out, and seroprevalence 10 years after virus introduction.

We compared five hierarchical methods commonly used and available in function *hclust* from STATS R package⁸²: single linkage, complete linkage, Unweighted Pair-Group Method using arithmetic Averages or UPGMA, Unweighted Pair-Group Method using Centroids or UPGMC, and Ward's method, as well as one non-hierarchical method available in CLUSTER R package⁹², Partitioning Around Medoids or PAM. The use of average silhouette width⁹³ allowed us to optimize the number of clusters and to compare results from the different methods⁹⁴. Silhouette width measures the degree of membership of an object to its cluster and varies from -1 to 1 . It can be averaged over all objects of a partition; a high average silhouette indicates strong support for the partition.

We were also interested in identifying parameters that most influenced epidemiological dynamics. To do so, we performed a global sensitivity analysis using a fractional factorial design⁹⁵. Input parameters were 15 demographic parameters (carrying capacity K , probability of mortality μ for the 10 age/sex classes, and fertility rate η for the 4 age classes) and 8 epidemiological parameters (duration of maternal immunity $1/\alpha$, duration of viraemia $1/\gamma$, duration of acquired immunity $1/\omega$, probability of abortion ρ , both horizontal transmission coefficients β_X , and probabilities of mortality related to transient infection μ^T and to permanent infection μ^P). We used 3 levels per parameter: 75%, 100%, and 125% of their nominal value (except for rates η_A and η_O which were bounded at 1 because chamois are uniparous). Using PLANOR R package⁹⁶, we generated a fractional factorial plan of resolution V, which allowed us to estimate all of the main effects and first order interactions assuming that higher order interactions are negligible^{97,98}. This design represents $3^8 = 6561$ scenarios. 400 replications were performed per scenario. All aggregate outputs were considered.

For each output, a linear regression model was run with all main effects and first order interactions. Parameters whose total contribution accounted for more than 5% of the output variance were retained. This total contribution of factor i to variation in output y was calculated as $C_i^y = (SS_i^y + \frac{1}{2} \sum_{j \neq i} SS_{i,j}^y) / SS_{tot}^y$ where SS_i^y is the sum of squares related to the main effect of factor i , $SS_{i,j}^y$ the sum of squares related to the first-order interaction between factors i and j , and SS_{tot}^y the total sum of squares⁹². The sum of the contributions equalled model R^2 .

Management strategies. We contrasted two cases when evaluating management strategies: a protected population in which hunting was forbidden, and a hunted population in which harvest rate was 10% of the population size. In doing so, we expected our results to be relevant for a wide range of ungulate species, including Pyrenean chamois, for which these two management situations are commonly encountered.

In both cases, management measures were implemented the year after population managers identified a population decline associated with virus detection. The criteria for identifying a pestivirus-related population decline was the detection of two infected (viraemic) animals during the same year associated with a 30% decrease in population size over the last two years. Hence, measures could not be implemented in replications where the virus faded out early with no long-term impact on population size. Measures were stopped when no infected animal was detected for 1 year and population size was stable for two consecutive years.

In the protected population case, surveillance was modelled assuming PCR virus detection on carcasses of found-dead animals and management strategies were based on capture-recapture protocol. Carcass collection was performed between November and April, with either high carcass collection rate as observed in the Pyrenean National Park (10% of the estimated population size³²), or low carcass collection rate (2.5%). PCR was realized on a proportion of these carcasses, with either a high surveillance rate (20% of the carcasses analysed) or a low surveillance rate (5%). We used these proportions because it is much more difficult to obtain good-quality samples (blood or spleen) for PCR analysis in found-dead carcasses than in hunter-harvested carcasses. Two distinct strategies were implemented during captures: either test-and-cull of infected animals, or a combination of test-and-cull of infected animals with vaccination of susceptible ones. From data collected in the Orlu population, we considered the proportion of the population captured each year to vary between 2% and 30% and to be distributed as follow: 7% juveniles, 17% subadults, 59% adult females, and 16% adult males.

In the hunted population case, the surveillance protocol was modelled as PCR virus detection on carcasses of harvested animals, and management strategies included modulation of the hunting effort. PCR was realized on a proportion of hunted animals, with either high (60% of carcasses analysed) or low (15%) surveillance rate. Five different strategies were implemented: (i) test-and-cull during captures, (ii) test-and-cull combined

with vaccination during captures, (iii) targeted hunting (specific age and sex class), (iv) ban on hunting and (v) increased hunting. The proportion of population captured (for test-and-cull and vaccination) followed the same distribution as in the protected population case. Harvest rate was 10% of the population size, and the distribution of harvested animals mimics the one commonly found in French Pyrenees: 33% juveniles, 17% subadults, 17% adult females, and 33% adult males. Adult females and adult males were pooled irrespective of their age, because it is not possible to easily differentiate among adults, old adults, and very old adults in the field. Targeted hunting strategy induced a modification of this distribution, with 50% of the harvested animals being of the target class (4 possible targets: juveniles, subadults, adult females, adult males), and 17% for each of the three other classes. We also tested a scenario of hunting intensification, considering a doubling of the hunting rate.

Data Availability

The datasets analysed during the current study are available in⁴³ and within its Supplementary Information files.

References

1. Daszak, P., Cunningham, A. & Hyatt, A. D. Emerging infectious diseases of wildlife - Threats to biodiversity and human health. *Science* **287**, 443–449 (2000).
2. Jones, K. E. *et al.* Global trends in emerging infectious diseases. *Nature* **451**, 990–993 (2008).
3. Cross, M. L., Buddle, B. M. & Aldwell, F. E. The potential of oral vaccines for disease control in wildlife species. *Vet. J.* **174**, 472–480 (2007).
4. Wobeser, G. *Disease in wild animals: investigation and management*. (Springer, 2007).
5. National Academies of Sciences, Engineering, and Medicine *Revisiting brucellosis in the Greater Yellowstone Area*, <https://doi.org/10.17226/24750> (National Academies Press, 2017).
6. Sæther, B.-E. Environmental stochasticity and population dynamics of large herbivores: a search for mechanisms. *Trends Ecol. Evol.* **12**, 143–149 (1997).
7. LaDeau, S. L., Glass, G. E., Hobbs, N. T., Latimer, A. & Ostfeld, R. S. Data–model fusion to better understand emerging pathogens and improve infectious disease forecasting. *Ecol. Appl.* **21**, 1443–1460 (2011).
8. Barlow, N. D. The ecology of wildlife disease control: simple models revisited. *J. Appl. Ecol.* **33**, 303–314 (1996).
9. Craft, M. E. Infectious disease transmission and contact networks in wildlife and livestock. *Philos. Trans. R. Soc. B Biol. Sci.* **370**, 20140107 (2015).
10. Milner-Gulland, E. J. A stochastic dynamic programming model for the management of the saiga antelope. *Ecol. Appl.* **7**, 130–142 (1997).
11. Jonzén, N., Ripa, J. & Lundberg, P. A theory of stochastic harvesting in stochastic environments. *Am. Nat.* **159**, 427–437 (2002).
12. De Leo, G. A. & Micheli, F. The good, the bad and the ugly of marine reserves for fishery yields. *Philos. Trans. R. Soc. B Biol. Sci.* **370** (2015).
13. Boyce, M. S., Haridas, C. V. & Lee, C. T. & the NCEAS Stochastic Demography Working Group. Demography in an increasingly variable world. *Trends Ecol. Evol.* **21**, 141–148 (2006).
14. Lloyd-Smith, J. O. *et al.* Should we expect population thresholds for wildlife disease? *Trends Ecol. Evol.* **20**, 511–519 (2005).
15. Lande, R., Engen, S. & Sæther, B.-E. *Stochastic population dynamics in ecology and conservation*. (Oxford University Press, 2003).
16. Williams, C. K. Accounting for wildlife life-history strategies when modeling stochastic density-dependent populations: a review. *J. Wildl. Manag.* **77**, 4–11 (2013).
17. Pepin, K. M. & VerCauteren, K. C. Disease-emergence dynamics and control in a socially-structured wildlife species. *Sci. Rep.* **6**, 1–13 (2016).
18. Smith, G. C. *et al.* Modelling disease dynamics and management scenarios. In *Management of disease in wild mammals* (eds Delahay, R. J., Smith, G. C. & Hutchings, M. R.) 53–77 (2009).
19. Ezanno, P., Vergu, E., Langlais, M. & Gilot-Fromont, E. Modelling the dynamics of host-parasite interactions: basic principles. In *New Frontiers of Molecular Epidemiology of Infectious Diseases* (eds Morand, S., Beaudreau, F. & Cabaret, J.), https://doi.org/10.1007/978-94-007-2114-2_5 79–101 (Springer Netherlands, 2012).
20. Cooch, E. G., Conn, P. B., Ellner, S. P., Dobson, A. P. & Pollock, K. H. Disease dynamics in wild populations: modelling and estimation: a review. *J. Ornithol.* **152**, 485–509 (2012).
21. Wasserberg, G., Osnas, E. E., Rolley, R. E. & Samuel, M. D. Host culling as an adaptive management tool for chronic wasting disease in white-tailed deer: a modelling study. *J. Appl. Ecol.* **46**, 457–466 (2009).
22. Haydon, D. T. *et al.* Low-coverage vaccination strategies for the conservation of endangered species. *Nature* **443**, 692–695 (2006).
23. Ramsey, D. S. L. *et al.* Forecasting eradication of bovine tuberculosis in Michigan white-tailed deer. *J. Wildl. Manag.* **78**, 240–254 (2014).
24. Jones, C. G., Lawton, J. H. & Shachak, M. Organisms as ecosystem engineers. *Oikos* **69**, 373 (1994).
25. Gordon, I. J., Hester, A. J. & Festa-Bianchet, M. The management of wild large herbivores to meet economic, conservation and environmental objectives. *J. Appl. Ecol.* **41**, 1021–1031 (2004).
26. Jolles, A. E. & Ezenwa, V. O. Ungulates as model systems for the study of disease processes in natural populations. *J. Mammal.* **96**, 4–15 (2015).
27. Serrano, E. *et al.* Border Disease Virus: an exceptional driver of chamois populations among other threats. *Virology* **6**, 1–9 (2015).
28. Nelson, D. D., Duprau, J. L., Wolff, P. L. & Evermann, J. F. Persistent bovine viral diarrhoea virus infection in domestic and wild small ruminants and camelids including the mountain goat (*Oreamnos americanus*). *Front. Microbiol.* **6**, 1–7 (2016).
29. Rossi, S. *et al.* Controlling of CSFV in European wild boar using oral vaccination: a review. *Front. Microbiol.* **6**, 1–11 (2015).
30. Marco, I. *et al.* Severe outbreak of disease in the southern chamois (*Rupicapra pyrenaica*) associated with border disease virus infection. *Vet. Microbiol.* **120**, 33–41 (2007).
31. Herrero, J., Escudero, E., Fernández de Luco, D. & García-González, R. El sarrio pirenaico *Rupicapra p. pyrenaica*: biología, patología y gestión. (in Spanish) (Consejo de Protección de la Naturaleza de Aragón FEDENCA, 2013).
32. Gonzalez, G. & Crampe, J.-P. Mortality patterns in a protected population of isards (*Rupicapra pyrenaica*). *Can. J. Zool.* **79**, 2072–2079 (2001).
33. Maillard, D. *et al.* Ungulates and their management in France. In *European ungulates and their management in the 21st century* (eds Apollonio, M., Andersen, R. & Putman, R.) 441–474 (Cambridge University Press, 2010).
34. Hurtado, A. *et al.* Molecular identification of a new pestivirus associated with increased mortality in the Pyrenean chamois (*Rupicapra pyrenaica pyrenaica*) in Spain. *J. Wildl. Dis.* **40**, 796–800 (2004).
35. Alzieu, J.-P. *et al.* First description of pestivirus disease in *Rupicapra pyrenaica pyrenaica*. *Bull. Acad. Vét. Fr.* **157**, 49–54 (2004).
36. Arnal, M. C. *et al.* A novel pestivirus associated with deaths in Pyrenean chamois (*Rupicapra pyrenaica pyrenaica*). *J. Gen. Virol.* **85**, 3653–3657 (2004).
37. Frölich, K. *et al.* Detection of a newly described pestivirus of Pyrenean chamois (*Rupicapra pyrenaica pyrenaica*) in France. *J. Wildl. Dis.* **41**, 606–610 (2005).

38. Fernández-Sirera, L. *et al.* Surveillance of border disease in wild ungulates and an outbreak in pyrenean chamois (*Rupicapra pyrenaica pyrenaica*) in Andorra. *J. Wildl. Dis.* **48**, 1021–1029 (2012).
39. Marco, I. *et al.* Border Disease Virus among chamois, Spain. *Emerg. Infect. Dis.* **15**, 448–451 (2009).
40. Pioz, M. *et al.* Transmission of a pestivirus infection in a population of Pyrenean chamois. *Vet. Microbiol.* **119**, 19–30 (2007).
41. Marco, I. *et al.* The two sides of border disease in Pyrenean chamois (*Rupicapra pyrenaica*): silent persistence and population collapse. *Anim. Health Res. Rev.* **16**, 70–77 (2015).
42. Luzzago, C. *et al.* Spatial and temporal phylogeny of Border Disease Virus in Pyrenean chamois (*Rupicapra p. pyrenaica*). *PLoS ONE* **11**, e0168232 (2016).
43. Beaunée, G., Gilot-Fromont, E., Garel, M. & Ezanno, P. A novel epidemiological model to better understand and predict the observed seasonal spread of Pestivirus in Pyrenean chamois populations. *Vet. Res.* **46**, 86 (2015).
44. Marco, I. *et al.* Retrospective study of pestivirus infection in Pyrenean chamois (*Rupicapra pyrenaica*) and other ungulates in the Pyrenees (NE Spain). *Vet. Microbiol.* **149**, 17–22 (2011).
45. Fernández-Sirera, L. *et al.* Two different epidemiological scenarios of Border Disease in the populations of Pyrenean chamois (*Rupicapra p. pyrenaica*) after the first disease outbreaks. *PLoS ONE* **7**, e51031 (2012).
46. Marco, I. *et al.* Epidemiological study of border disease virus infection in Southern chamois (*Rupicapra pyrenaica*) after an outbreak of disease in the Pyrenees (NE Spain). *Vet. Microbiol.* **127**, 29–38 (2008).
47. Loison, A., Festa-Bianchet, M., Gaillard, J.-M., Jorgenson, J. T. & Jullien, J.-M. Age-specific survival in five populations of ungulates: evidence of senescence. *Ecology* **80**, 2539–2554 (1999).
48. Lebreton, J.-D., Burnham, K. P., Clobert, J. & Anderson, D. R. Modeling survival and testing biological hypotheses using marked animals: a unified approach with case studies. *Ecol. Monogr.* **62**, 67–118 (1992).
49. Choisy, M. & Rohani, P. Harvesting can increase severity of wildlife disease epidemics. *Proc. R. Soc. B Biol. Sci.* **273**, 2025–2034 (2006).
50. Gilot-Fromont, E. *et al.* Self-clearance of pestivirus in a Pyrenean chamois (*Rupicapra pyrenaica*) population. *J. Wildl. Dis.* **54**, 335–341 (2018).
51. Legendre, P. & Legendre, L. F. J. *Numerical Ecology*. (Elsevier, 1998).
52. Saltelli, A., Chan, K. & Scott, E. M. *Sensitivity analysis*. (Wiley, 2000).
53. Smith, G. C. & Cheeseman, C. L. A mathematical model for the control of diseases in wildlife populations: culling, vaccination and fertility control. *Ecol. Model.* **150**, 45–53 (2002).
54. Harrison, A., Newey, S., Gilbert, L., Haydon, D. T. & Thirgood, S. Culling wildlife hosts to control disease: mountain hares, red grouse and louping ill virus. *J. Appl. Ecol.* **47**, 926–930 (2010).
55. Matthews, L. & Woolhouse, M. New approaches to quantifying the spread of infection. *Nat. Rev. Microbiol.* **3**, 529–536 (2005).
56. Wood, S. N. & Thomas, M. B. Space, time and persistence of virulent pathogens. *Proc R Soc Lond B* **263**, 673–680 (1996).
57. Colom-Cadena, A. *et al.* Experimental infection with highly and low pathogenic strains of border disease virus in Pyrenean chamois (*Rupicapra p. pyrenaica*) gives light to the epidemiological diversity of the disease. In *12th Conference of the European Wildlife Disease Association (EWDA)*, Leibniz Institute for Zoo and Wildlife Research (IZW), Berlin (2016).
58. Cavallero, S., Marco, I., Lavín, S., D'Amelio, S. & López-Olvera, J. R. Polymorphisms at MHC class II DRB1 exon 2 locus in Pyrenean chamois (*Rupicapra pyrenaica pyrenaica*). *Infect. Genet. Evol.* **12**, 1020–1026 (2012).
59. Rossi, S. *et al.* Incidence and persistence of classical swine fever in free-ranging wild boar (*Sus scrofa*). *Epidemiol. Infect.* **133**, 559–568 (2005).
60. Fromont, E., Pontier, D. & Langlais, M. Dynamics of a feline retrovirus (FeLV) in host populations with variable spatial structure. *Proc. R. Soc. B Biol. Sci.* **265**, 1097–1104 (1998).
61. Nettleton, P. E., Gilray, J. A., Russo, P. & Dliissi, E. Border disease of sheep and goats. *Vet. Res.* **29**, 327–340 (1998).
62. Newcomer, B. W. & Givens, M. D. Approved and experimental countermeasures against pestiviral diseases: bovine viral diarrhoea, classical swine fever and border disease. *Antiviral Res.* **100**, 133–150 (2013).
63. Vantsis, J. T., Barlow, R. M., Gardiner, A. C. & Linklater, K. A. The effects of challenge with homologous and heterologous strains of Border disease virus on ewes with previous experience of the disease. *J. Comp. Pathol.* **90**, 39–45 (1980).
64. Anne, S. Vaccination contre la maladie des frontières (Border disease) chez le mouton: premiers essais d'efficacité du vaccin inactivé Bovilis-BVD. (Toulouse, 2012).
65. Woodroffe, R. Managing disease threats to wild mammals. *Anim. Conserv.* **2**, 185–193 (1999).
66. Anderson, L. G., Gortázar, C., Vicente, J., Hutchings, M. R. & White, P. C. L. Modelling the effectiveness of vaccination in controlling bovine tuberculosis in wild boar. *Wildl. Res.* **40**, 367–376 (2013).
67. McDonald, R. A., Delahay, R. J., Carter, S. P., Smith, G. C. & Cheeseman, C. L. Perturbing implications of wildlife ecology for disease control. *Trends Ecol. Evol.* **23**, 53–56 (2008).
68. Wilson, G. J., Carter, S. P. & Delahay, R. J. Advances and prospects for management of TB transmission between badgers and cattle. *Vet. Microbiol.* **151**, 43–50 (2011).
69. Prentice, J. C., Marion, G., White, P. C. L., Davidson, R. S. & Hutchings, M. R. Demographic processes drive increases in wildlife disease following population reduction. *PLoS ONE* **9**, e86563 (2014).
70. Anderson, D. P. *et al.* A novel approach to assess the probability of disease eradication from a wild-animal reservoir host. *Epidemiol. Infect.* **141**, 1509–1521 (2013).
71. Morellet, N. *et al.* Indicators of ecological change: new tools for managing populations of large herbivores. *J. Appl. Ecol.* **44**, 634–643 (2007).
72. Loison, A. Approches intra- et interspécifiques de la dynamique des populations: l'exemple du chamois. (in French) (University Lyon 1, 1995).
73. Bonenfant, C. *et al.* Testing sexual segregation and aggregation: old ways are best. *Ecology* **88**, 3202–3208 (2007).
74. Bonenfant, C. *et al.* Empirical evidence of density-dependence in populations of large herbivores. In *Advances in Ecological Research* (ed. Caswell, H.) **41**, 313–357 (Elsevier Academic Press Inc, 2009).
75. Garel, M. *et al.* Population abundance and early spring conditions determine variation in body mass of juvenile chamois. *J. Mammal.* **92**, 1112–1117 (2011).
76. Bleu, J. *et al.* Age-specific survival and annual variation in survival of female chamois differ between populations. *Oecologia* **179**, 1091–1098 (2015).
77. Gaillard, J.-M., Festa-Bianchet, M., Yoccoz, N. G., Loison, A. & Toigo, C. Temporal variation in fitness components and population dynamics of large herbivores. *Annu. Rev. Ecol. Syst.* **31**, 367–393 (2000).
78. Vautrain, G. & Gibert, P. Le Pestivirus de l'isard contamine-t-il les ovins? *Rev. ONCFS Faune Sauvage*, 1–5 (in French) (2008).
79. Martin, C. *et al.* Experimental infection of pregnant pyrenean chamois (*Rupicapra pyrenaica*) with border disease virus subtype 4. *J. Wildl. Dis.* **49**, 55–68 (2013).
80. Cabezón, O. *et al.* Experimental infection with chamois border disease virus causes long-lasting viraemia and disease in Pyrenean chamois (*Rupicapra pyrenaica*). *J. Gen. Virol.* **92**, 2494–2501 (2011).
81. Coulson, T., Rohani, P. & Pascual, M. Skeletons, noise and population growth: the end of an old debate? *Trends Ecol. Evol.* **19**, 359–364 (2004).
82. R Core Team. *R: a language and environment for statistical computing*. (R Foundation for Statistical Computing, Vienna, Austria, 2015).

83. Loison, A., Toïgo, C., Appolinaire, J. & Michallet, J. Demographic processes in colonizing populations of isard (*Rupicapra pyrenaica*) and ibex (*Capra ibex*). *J. Zool.* **256**, 199–205 (2002).
84. Crampe, J.-P. *et al.* Patrons de reproduction des femelles d'isard (*Rupicapra pyrenaica pyrenaica*) dans une population non chassée et conséquences démographiques. *Can. J. Zool.* **84**, 1263–1268 (in French) (2006).
85. Thiry, E. Stratégies de prévention des avortements provoqués par les herpesvirus et les pestivirus des ruminants. *Ann. Médecine Vét.* **146**, 161–168 (2002).
86. Loison, A., Darmon, G., Cassar, S., Jullien, J.-M. & Maillard, D. Age- and sex-specific settlement patterns of chamois (*Rupicapra rupicapra*) offspring. *Can. J. Zool.* **86**, 588–593 (2008).
87. Pépin, D. & Gerard, J.-F. Group dynamics and local population density dependence of group size in the Pyrenean chamois. *Rupicapra pyrenaica. Anim. Behav.* **75**, 361–369 (2008).
88. Kourkgy, C., Garel, M., Appolinaire, J., Loison, A. & Toïgo, C. Onset of autumn shapes the timing of birth in Pyrenean chamois more than onset of spring. *J. Anim. Ecol.* **85**, 581–590 (2016).
89. Laake, J. L. *RMark: an R interface for analysis of capture-recapture data with MARK*. 25 (AFSC Processed Rep. 2013-01, 2013).
90. Ezanno, P., Fourichon, C. & Seegers, H. Influence of herd structure and type of virus introduction on the spread of bovine viral diarrhoea virus (BVDV) within a dairy herd. *Vet. Res.* **39**(1), 39 (2008).
91. Bretó, C., He, D., Ionides, E. L. & King, A. A. Time series analysis via mechanistic models. *Ann. Appl. Stat.* **3**, 319–348 (2009).
92. Maechler, M., Rousseeuw, P. J., Struyf, A., Hubert, M. & Hornik, K. *cluster: Cluster Analysis Basics and Extensions. R package version 2.0.3* (2015).
93. Rousseeuw, P. J. Silhouettes: a graphical aid to the interpretation and validation of cluster analysis. *J. Comput. Appl. Math.* **20**, 53–65 (1987).
94. Borcard, D., Gillet, F. & Legendre, P. *Numerical ecology with R*. (Springer, 2011).
95. Box, G. E. P., Hunter, W. G. & Hunter, J. S. *Statistics for experimenters: an introduction to design, data analysis, and model building*. (Wiley, 1978).
96. Kobilinsky, A., Bouvier, A. & Monod, H. *PLANOR: an R package for the automatic generation of regular fractional factorial designs. R package version 0.2–4*. (2015).
97. Bailey, R. *Design of comparative experiments*. (Cambridge University Press, 2008).
98. Kobilinsky, A. Les plans factoriels. In *Plans d'expériences: applications à l'entreprise* (eds Dreesbeke, J.-J., Fine, J. & Saporta, G.), 69–209 (in French) (Technip, 1997).
99. QGIS Development Team. *QGIS Geographic Information System*. (Open Source Geospatial Foundation Project, 2018).

Acknowledgements

This work was carried out using the computing facilities of the CC LBBE/PRABI. We thank Pierre Menaut and Philippe Gibert for their long-term implication in collecting field data and in epidemiological surveys, respectively. We also thank the DIR Occitanie, with special thanks to K. Foulché for his considerable involvement in the study site. Finally, we would like to thank H. Monod for his help with the design of the sensitivity analysis.

Author Contributions

S.L. conducted the analyses, prepared the figures and wrote the manuscript. P.E. and E.G.-F. advised model construction and model analyses, advised epidemiological details, discussed results and edited manuscript. M.G. performed capture-mark-resighting analyses, advised biological and management details, discussed results and edited manuscript.

Additional Information

Supplementary information accompanies this paper at <https://doi.org/10.1038/s41598-018-34623-0>.

Competing Interests: The authors declare no competing interests.

Publisher's note: Springer Nature remains neutral with regard to jurisdictional claims in published maps and institutional affiliations.



Open Access This article is licensed under a Creative Commons Attribution 4.0 International License, which permits use, sharing, adaptation, distribution and reproduction in any medium or format, as long as you give appropriate credit to the original author(s) and the source, provide a link to the Creative Commons license, and indicate if changes were made. The images or other third party material in this article are included in the article's Creative Commons license, unless indicated otherwise in a credit line to the material. If material is not included in the article's Creative Commons license and your intended use is not permitted by statutory regulation or exceeds the permitted use, you will need to obtain permission directly from the copyright holder. To view a copy of this license, visit <http://creativecommons.org/licenses/by/4.0/>.

© The Author(s) 2018