



HAL
open science

Sialic acid mediated mechanical activation of β 2 adrenergic receptors by bacterial pili

Zoé Virion, Stéphane Doly, Kusumika Saha, Mireille Lambert, Francois Guillonneau, Camille Bied, Rebecca M Duke, Pauline M Rudd, Catherine Robbe-Masselot, Xavier Nassif, et al.

► **To cite this version:**

Zoé Virion, Stéphane Doly, Kusumika Saha, Mireille Lambert, Francois Guillonneau, et al.. Sialic acid mediated mechanical activation of β 2 adrenergic receptors by bacterial pili. Nature Communications, 2019, 10, pp.4752. 10.1038/s41467-019-12685-6 . hal-02485670

HAL Id: hal-02485670

<https://hal.science/hal-02485670>

Submitted on 20 Feb 2020

HAL is a multi-disciplinary open access archive for the deposit and dissemination of scientific research documents, whether they are published or not. The documents may come from teaching and research institutions in France or abroad, or from public or private research centers.

L'archive ouverte pluridisciplinaire **HAL**, est destinée au dépôt et à la diffusion de documents scientifiques de niveau recherche, publiés ou non, émanant des établissements d'enseignement et de recherche français ou étrangers, des laboratoires publics ou privés.

ARTICLE

<https://doi.org/10.1038/s41467-019-12685-6>

OPEN

Sialic acid mediated mechanical activation of β_2 adrenergic receptors by bacterial pili

Zoe Virion^{1,7}, Stéphane Doly^{2,7}, Kusumika Saha², Mireille Lambert², François Guillonneau³, Camille Bied², Rebecca M. Duke⁴, Pauline M. Rudd⁴, Catherine Robbe-Masselot⁵, Xavier Nassif^{1,6}, Mathieu Coureuil^{1*} & Stefano Marullo^{2*}

Meningococcus utilizes β -arrestin selective activation of endothelial cell β_2 adrenergic receptor (β_2 AR) to cause meningitis in humans. Molecular mechanisms of receptor activation by the pathogen and of its species selectivity remained elusive. We report that β_2 AR activation requires two asparagine-branched glycan chains with terminally exposed N-acetylneuraminic acid (sialic acid, Neu5Ac) residues located at a specific distance in its N-terminus, while being independent of surrounding amino-acid residues. Meningococcus triggers receptor signaling by exerting direct and hemodynamic-promoted traction forces on β_2 AR glycans. Similar activation is recapitulated with beads coated with Neu5Ac-binding lectins, submitted to mechanical stimulation. This previously unknown glycan-dependent mode of allosteric mechanical activation of a G protein-coupled receptor contributes to meningococcal species selectivity, since Neu5Ac is only abundant in humans due to the loss of CMAH, the enzyme converting Neu5Ac into N-glycolylneuraminic acid in other mammals. It represents an additional mechanism of evolutionary adaptation of a pathogen to its host.

¹Inserm, U1151, CNRS UMR 8253, Institut-Necker-Enfants-Malades, Université de Paris, Paris, France. ²Inserm, U1016, CNRS UMR8104, Institut Cochin, Université de Paris, Paris, France. ³Plateforme de Protéomique, Université de Paris, Paris, France. ⁴NIBRT GlycoScience Group, NIBRT - The National Institute for Bioprocessing Research and Training, Blackrock, Co., Mount Merrion, Fosters Avenue, Dublin, Ireland. ⁵CNRS, UMR 8576, Unité de Glycobiologie Structurale et Fonctionnelle (UGSF), Université Lille, 59000 Lille, France. ⁶Assistance Publique - Hôpitaux de Paris, Hôpital Necker Enfants Malades, Paris, France. ⁷These authors contributed equally: Zoe Virion, Stéphane Doly. *email: mathieu.coureuil@inserm.fr; stefano.marullo@inserm.fr

Meningococcus (*Neisseria meningitidis*) is a human-restricted Gram-negative bacterium resident in the nasopharyngeal mucosa. If meningococci gain access to the bloodstream, they rapidly disseminate, cross the blood–brain barrier (BBB), and invade meninges, causing cerebrospinal meningitis¹. In case of high bacterial load, infection can rapidly progress leading to peripheral vascular involvement and septic shock, the most severe life-threatening form being *purpura fulminans*².

Interaction of *N. meningitidis* with endothelial cells is critical for the initiation of peripheral vascular lesions³ and for the opening of BBB⁴. This interaction involves long bacterial filamentous structures on the pathogen known as Type IV pili (Tfp), which mediate the attachment of virulent capsulated meningococci to endothelial cells in vitro and in vivo^{4,5}. Tfp are made of the assembly in helical fibers of a core pilin subunit, PilE, and of other less abundant (minor) pilins, such as PilV, PilX, or ComP, which are structurally similar to PilE^{6,7}. They trigger signaling cascades in host cells leading to the stabilization of bacterial colonies at the endothelial cell surface and the subsequent translocation of bacteria through endothelial barriers^{8–10}. Tfp successively interact via PilE and PilV with two host receptors that form a constitutive oligomeric complex in endothelial cells:¹¹ CD147, which functions as the initial adhesion receptor¹², and the signaling β_2 -adrenergic receptor (β_2 AR⁹), a member of the G protein-coupled receptor (GPCR) family.

A major unresolved question in this context is the molecular mechanism by which a GPCR can be activated by bacterial pilins to transduce a signaling cascade that is normally promoted by cognate receptor ligands. Catecholamines and adrenergic agonists bind to and fully activate β_2 AR by interacting with its orthosteric ligand-binding pocket¹³. This interaction causes receptor coupling to cognate G_s protein, which activates adenylyl cyclases, and also the GPCR kinase (GRK)-dependent recruitment of β -arrestins, which scaffold signaling cascades and regulate receptor response¹⁴. In contrast, meningococcal pili do not promote cAMP production in host cells⁹ and only induce a GRK-dependent activation of β -arrestins, which in turn activate a Src-cortactin pathway essential for the stabilization of bacterial colonies under blood flow, and recruit p120-catenin and VE-cadherin depleting them from endothelial junctions, causing the opening of the BBB⁹. The activation by pili is allosteric, as it cannot be inhibited by an orthosteric blocker such as propranolol, and was reported to somehow involve the N-terminal extracellular region of the β_2 AR. Indeed, substituting the N-terminal region of the infection-incompetent angiotensin II receptor AT1R with that of the human β_2 AR produced a chimeric receptor that could be activated by meningococci in vitro⁹, suggesting that some direct or indirect *N. meningitidis* interaction with the β_2 AR N-terminus might mediate β -arrestin-selective signaling.

Growing *N. meningitidis* colonies are submitted to forces exerted by blood flow. Consequently, to cope with hemodynamic forces that oppose attaching to endothelial cells at the initial stages of infection, bacterial adhesion only occurs at low levels of shear stress, which are mostly found in capillaries¹⁵. Moreover, Tfp-induced signaling triggers host cell plasma membrane reorganization to form filopodia-like structures that come in close contact with bacteria, expanding the interaction surface between the colonies and the endothelium and contributing to their resistance to shear stress^{10,11}. In addition to their passive “hooking” role, Tfp are actively involved in the generation of mechanical forces. Early studies in *Neisseria* species demonstrated that pilus retraction powered by the PilT ATPase generates nanonewton forces in vivo allowing bacteria to crawl over surfaces^{16,17}. These forces, when applied to the cell surface via pili-coated beads mobilized by optical tweezers, were sufficient to

induce ezrin recruitment under beads¹⁸. Also, intermittent Tfp-dependent traction forces inside bacterial aggregates were recently reported to play a role in the adaptation of *N. meningitidis* aggregates to the geometry of invaded capillaries¹⁹. Although Tfp need to bind to host endothelial cell to generate pulling forces, the plasma membrane tether involved in this process has not been identified yet. Previous studies in flow chambers, which recapitulate the hemodynamic conditions found in capillaries, have demonstrated that the β_2 AR is instrumental in the signaling process, leading to stabilizing small meningococcal colonies under flow⁹. A potential mechanistic explanation of these observations would be that the β_2 AR is at the same time a mechano-sensor and a transducing receptor for meningococcal Tfp.

A further central open question related to meningococcus-induced signaling is why this pathogen only infects humans and cannot activate signals in non-human endothelial cells. Several adaptive features have been proposed to participate in the species selectivity of meningococcus, particularly when the initial bacterial load is low in vivo. *Neisseria meningitidis* has established specific interactions with human transferrin, which carries the iron indispensable for bacterial growth²⁰. Similarly, the interaction of meningococcus with human complement factor H protects the pathogen from the lytic action of the complement components²¹. However, in reconstituted cell systems in which these proteins are absent, meningococcus signaling only requires the presence of the β_2 AR at the surface of host cells of human origin, provided that at least a surrogate adhesion system permits the initial adhesion of the pathogen⁹. These observations suggest that the restriction of meningococcal signaling for human cells is somehow linked to the mechanism of activation of the β_2 AR.

Here we show that the β_2 AR functions as a mechano-sensor for Tfp and that its allosteric activation by meningococcus is caused by mechanical traction forces. These forces are applied via two asparagine-branched glycan chains with terminally exposed *N*-acetyl-neuraminic acid (sialic acid (NANA), Neu5Ac) residues in the receptor extracellular extremity, independently of surrounding amino-acid residues. Because of the lack of the enzyme converting Neu5Ac into *N*-glycolyl-neuraminic acid (Neu5Gc), human NANA differs from that of other mammals. The requirement of Neu5Ac for β_2 AR mechanical activation thus appears to be essential in the pathogen selectivity for human cells and represent an additional example of evolutionary adaptation of a pathogen to its hosts.

Results

Tfp activate β_2 AR via interaction with receptor N-glycans.

Meningococcus can activate in vitro an infection-incompetent AT1R in which the N-terminus is substituted by that of the human β_2 AR, suggesting that this region of the β_2 AR is essential for triggering receptor signaling⁹. To further demonstrate that meningococcal pilins PilV and PilE specifically interact with the β_2 AR N-terminus, we used a homogeneous time-resolved fluorescence energy transfer (HTRF)-based assay in intact cells (Fig. 1a). Human HEK-293 (human embryonic kidney-293) or baby hamster kidney (BHK) cells were transfected with a construct coding for the HA epitope, followed by the first 27 amino-acid residues of the human β_2 AR, corresponding to the N-terminal extracellular region (EC1), the first transmembrane domain (TM1), and the first residues of the first intracellular loop, fused in phase upstream of green fluorescent protein (GFP) (identified as HA-EC1-TM1 β_2 AR-GFP). The signal of GFP fluorescence was used to control that the expression level of this construct was equivalent in the various assays (Supplementary Fig. 1). Cells were first incubated with excess recombinant pilins containing a 6×His N-terminal tag: PilV, PilE, or ComP, a minor

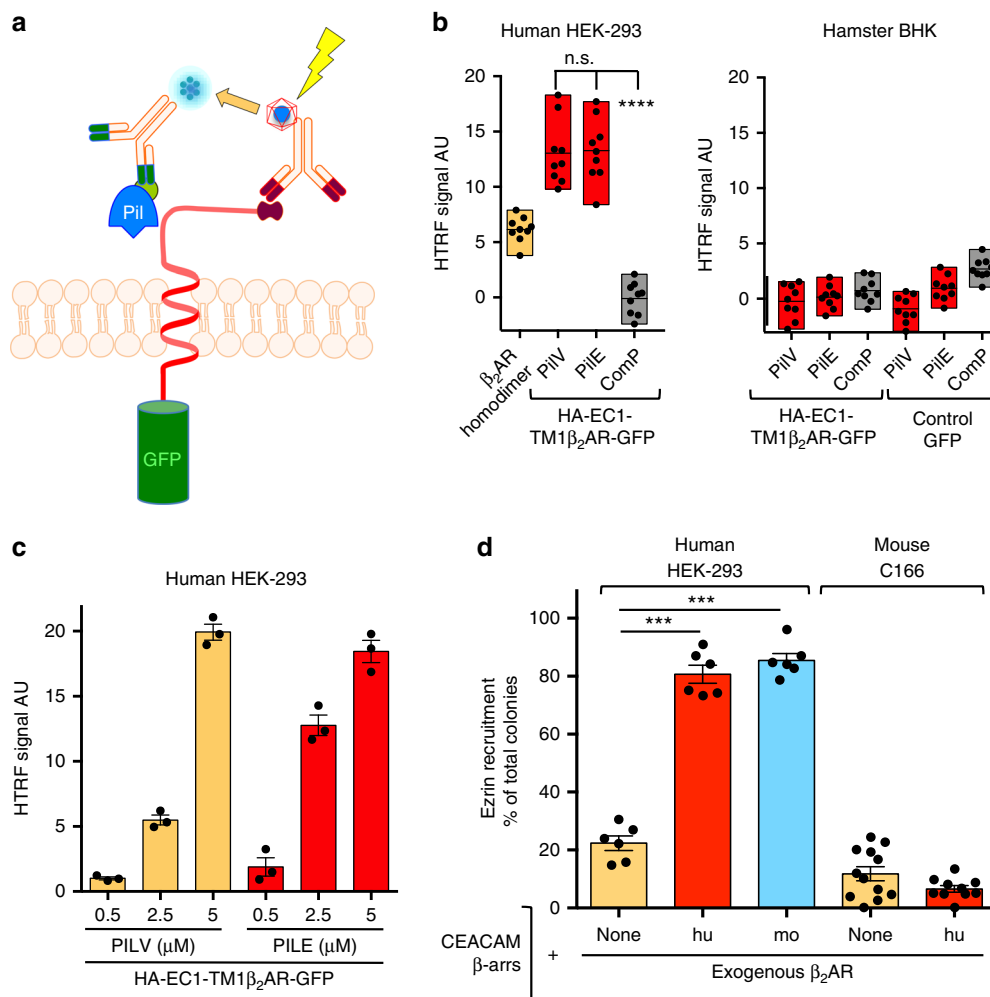


Fig. 1 β_2 AR activation involves the direct interaction of pilins with receptor N-terminus. **a** Diagram of the HTRF assay. Cells expressing comparable amounts (GFP signal) of the HA-EC1-TM1 β_2 AR-GFP construct were incubated with excess recombinant pilins (Pil) containing a 6 \times His N-terminal tag. Anti-HA-Tag antibodies coupled to the cryptate donor and anti 6 \times His-Tag antibodies coupled to the acceptor fluorophore were then added for 1 h before excitation at 320 nm and reading (FRET emission at 665 nm) in a Mithras2 Lysogeny Broth (LB) 943 HTRF reader. **b** HTRF signal obtained with PilV, PilE, and CompP (a non-signaling control pilin). The positive control (β_2 AR homodimer) was obtained in HEK-293 cells expressing wild-type HA-tagged β_2 -adrenoceptor incubated with a mixture of HTRF donor and acceptor antibodies both directed against the HA-tag, since previous studies reported that β_2 ARs expressed in HEK-293 cells form constitutive homodimers⁵⁹. Some experiments were conducted in hamster BHK cells expressing the same amount of surface HA-EC1-TM1 β_2 AR-GFP or control GFP. **c** The HTRF signal increased with the amount of incubated binding pilin. **d** *Neisseria meningitidis*-promoted signaling assays were conducted in the indicated human or mouse cells in vitro as reported⁹. The readout of the assay is the translocation under bacterial colonies of ezrin, a downstream event of the signaling cascade promoted by the pathogen⁶⁰. Forty eight hours after transfection, HEK-293 cells were infected with bacteria, washed, fixed, and stained with Alexa-conjugated anti-ezrin antibodies. DAPI was used to stain nuclei and bacterial DNA before analysis with a fluorescence microscope. In this experiment, the adhesion of pilated non-capsulated Opa⁺ (2C43 SiaD⁻ Opa⁺) meningococci onto HEK-293 cells was achieved by the expression of exogenous human CEACAM-1, a natural receptor for Opa molecules. Signaling in HEK-293 cells, leading to ezrin translocation beneath bacterial colonies, was obtained with exogenous human (hu) or mouse (mo) β_2 AR (expressed at the same concentration, controlled by the YFP signal, except for the control, "none") and β -arrestins 1 and 2 (β -arrests). The absence of meningococcus signaling observed in C166 cells was also found with mouse 3T3 fibroblasts (not shown). Data corresponding to at least two independent experiments in triplicate were analyzed by one-way ANOVA; **** p < 0.0001, *** p < 0.001, n.s.: nonsignificant

pilin not involved in meningococcal signaling and used as a negative control^{9,12}. Anti-HA-Tag antibodies coupled to the HTRF donor and anti 6 \times His-Tag antibodies coupled to the HTRF acceptor were then added for 1 h before excitation and reading. In this assay a FRET signal can only be recorded if the donor and the acceptor are located at a distance of 10 nm or below. A dose-dependent specific HTRF signal was measured with recombinant His-PilV and His-PilE in human cells expressing controlled levels of HA-EC1-TM1 β_2 AR-GFP (Fig. 1b, c), whereas no signal was observed with His-CompP. These data indicate a direct binding of PilE and PilV to the extracellular N-terminal region of the human

β_2 AR. Since meningococcus only signals in human cells¹, we compared human and mouse β_2 AR in a reconstituted assay in vitro⁹, in the attempt of delineating the possible role of specific amino-acid residues of β_2 AR N-terminus (Supplementary Fig. 2) in receptor activation by bacterial pili. While human HEK-293 cells reconstituted with mouse β_2 AR could be activated by *N. meningitidis* in vitro, the induced signaling being illustrated by ezrin recruitment under colonies as endpoint⁹, mouse endothelial cells expressing exogenous human β_2 AR were not activated by the pathogen even in the case of human CEACAM-1-promoted mock adhesion (Fig. 1d). Consistently, no specific binding signal could

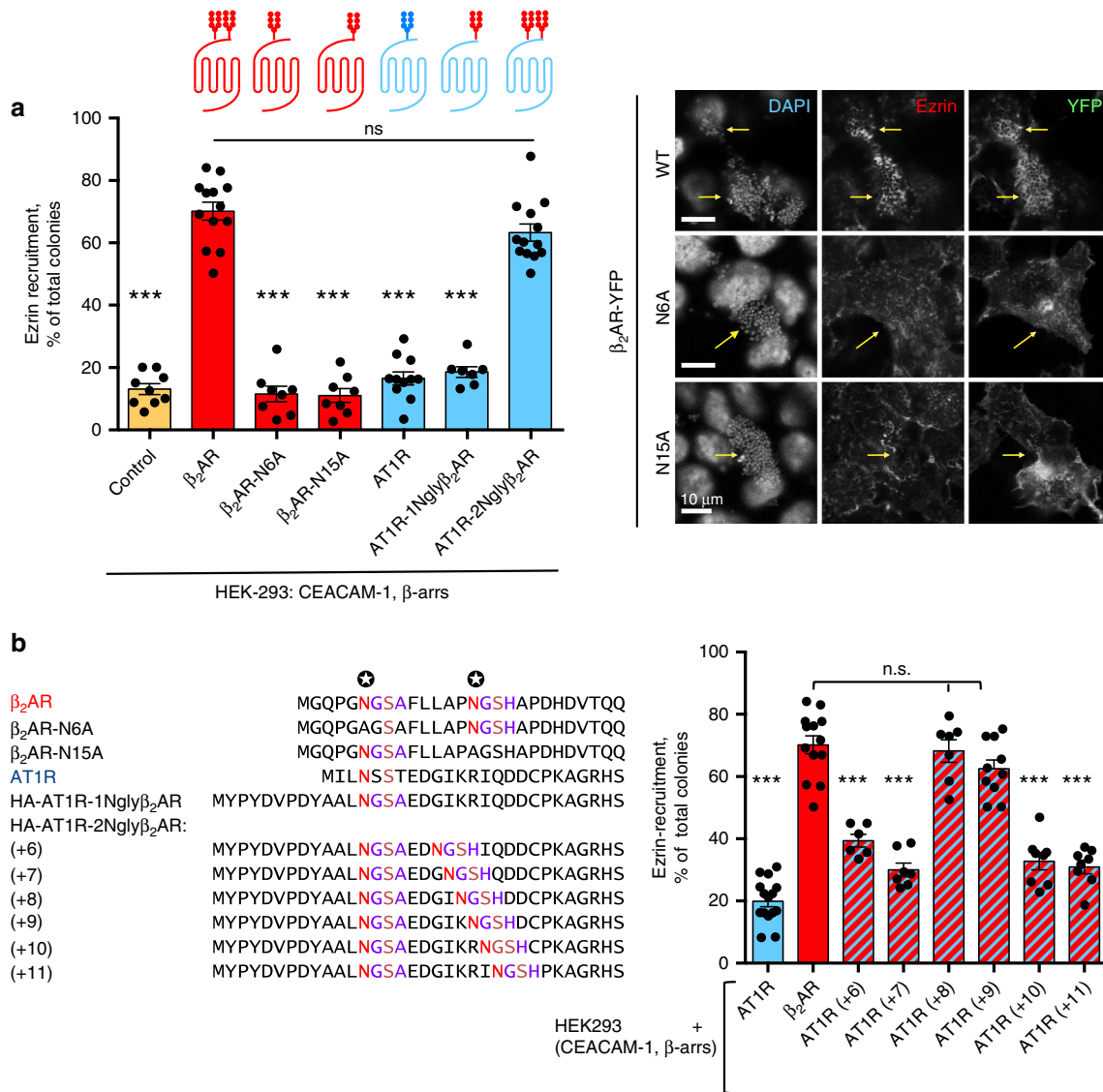


Fig. 2 Role of glycan chains in meningococcus-promoted β_2 AR signaling. **a**, Left panel: ezrin recruitment assays were as in Fig. 1d; the percentage of ezrin-recruiting colonies was quantified in controls and in cells expressing human CEACAM-1, β -arrestins (β -arrrs) and YFP-tagged forms of: wild-type β_2 AR, mutant β_2 AR lacking either N-glycosylation site (β_2 AR-N6A and β_2 AR-N15A), wild-type angiotensin AT1R, and mutant AT1R expressing either the first β_2 AR N-glycosylation signal (AT1R-1Ngly β_2 AR), or both signals (AT1R-2Ngly β_2 AR (+9)). Red drawings represent the β_2 AR polypeptide and its N-glycan chains. The blue diagram represents the AT1R polypeptide with its single N-glycan chain. In mutant AT1R receptors, the N-glycan chains branched on the N-glycosylation signals from the β_2 AR are represented in red. Histograms represent mean values \pm SEM ($n = 6$) (*** $p < 0.001$ control or mutants vs. wild-type β_2 AR, ANOVA with Bonferroni multiple comparison test; n.s.: not significant difference). Right panel: representative IF images of the experiment; arrows indicate the position of bacterial colonies; ezrin indicates the labeling with anti-ezrin antibodies and YFP corresponds to the signal of YFP-tagged receptors. **b** HEK-293 cells expressing CEACAM, β -arrestins, and the indicated receptors were prepared, infected, and processed as in **a**. Left panel: sequence alignment of receptor N-termini (constructs used in **a**, **b**). Asparagine residues used for glycan branching on wild-type β_2 AR are marked by stars. HA-AT1R-1Ngly β_2 AR and HA-AT1R-2Ngly β_2 AR correspond to AT1R mutants expressing one or both β_2 AR N-glycosylation signals, respectively; the numbers within parentheses correspond to the distance between N-glycosylation signals, (+9) being the distance found in wild-type β_2 AR N-terminus; β_2 AR-N6A and β_2 AR-N15A are mutant β_2 ARs lacking either N-glycosylation site. Right panel: role of the distance between N-glycosylation sites on meningococcus-promoted ezrin recruitment. Histograms represent mean values \pm SEM; ANOVA with Bonferroni's multiple comparison test: *** $P < 0.001$, n.s.: not significant, for the comparison with wild-type β_2 AR

be measured with the HTRF assay if the human β_2 AR N-terminus was expressed in hamster cells (Fig. 1b). Thus, the capacity of meningococci to bind to and activate the β_2 AR in human cells is independent of the amino-acid sequence and involves other factors. Since the β_2 AR N-terminus is glycosylated due to the presence of two asparagine-dependent glycosylation sites²², we examined whether these N-glycan chains might be important for receptor activation by *N. meningitidis*. Alanine substitution of

asparagine residues at position 6 or 15 of the β_2 AR, to suppress either glycan chain, dramatically reduced ezrin recruitment under meningococcal colonies to basal levels (Fig. 2a), although both receptor mutants were correctly targeted to the cell surface and responsive to agonist activation (Supplementary Fig. 3). The AT1R, which is not activated by meningococcus, only contains one glycosylation site in its terminus. Thus, in a complementary gain-of-function approach, two glycosylation consensus sequences

with asparagine residues separated by nine residues as in the β_2 AR were created by mutagenesis of the angiotensin AT1R complementary DNA (cDNA). Co-expression of this HA-AT1R-2Ngly β_2 AR (+9) mutant with β -arrestins reconstituted *N. meningitidis*-promoted signaling in vitro, contrasting with the lack of effect of the replacement of the AT1R N-glycosylation consensus sequence with the first of the β_2 AR (HA-AT1R-1Ngly β_2 AR) (Fig. 2a). These data suggest that both glycan chains of the β_2 AR are necessary and sufficient to support receptor activation by the pathogen, whereas the activation of a plasma membrane receptor via the engagement of its glycan chain(s) usually also involve the protein backbone²³. We next investigated the importance of the distance between glycan chains in receptor activation (Fig. 2b). While maintaining the first N-glycosylated site at a constant position, the second site (NGSH) was introduced in the AT1R N-terminus at a distance of 6 to 11 residues from the first site. In addition to HA-AT1R-2Ngly β_2 AR (+9), only the AT1R mutant where the glycosylation sites were separated by eight residues (HA-AT1R-2Ngly β_2 AR (+8)) promoted effective meningococcal activation in host cells. Altogether, these data demonstrate that Tfp-promoted signaling requires two glycan chains, at a definite distance in the N-terminus of the β_2 AR, independently of surrounding amino-acid residues.

NANA residues are essential for β_2 AR activation. The above data indicate that a particular distance of β_2 AR glycan chains is required for full interaction with meningococcal Tfp and subsequent receptor activation. Lectins were next used as inhibitors of receptor activation in an in vitro assay to identify the sugars that are specifically involved in this process (Fig. 3). This assay, performed with the same procedure as in reconstituted HEK-293 cells, was conducted instead on human hCMEC/D3 cells, which retain main features of primary brain micro-vessel endothelial cells, express endogenous CD147, β_2 AR, and β -arrestins, and represent a validated model of meningococcal infection⁸. Confirming the prominent role of β_2 AR in mediating meningococcus-promoted signaling, the deletion of the β_2 AR gene in this cell line markedly inhibited ezrin recruitment under bacterial colonies (Supplementary Fig. 4). Among 25 tested lectins, 4 displayed highly significant inhibition; 2 of them, *Maackia amurensis*-I (Mal-I) and wheat germ agglutinin (WGA), almost completely blocked meningococcus-induced signaling (Fig. 3a, b) in a dose-dependent manner (Fig. 3c). Control experiments were conducted to rule out the hypothesis that the lectin inhibitory effect could depend on the induction of some β_2 AR endocytosis (Supplementary Fig. 5). Mal-I was reported to bind to Neu5Ac α (2,3) galactose β (1,4)GlcNAc²⁴, whereas WGA binds to both the GlcNAc-GlcNAc (chitobiose) core and terminal NANA²⁵. Succinylated WGA, which does not bind to glycans containing sialic acid²⁵, did not inhibit meningococcus signaling (Fig. 3a, b). Moreover, in vitro meningococcal colonization of hCMEC/D3 cells under shear stress, which can be repressed by depleting the β_2 AR⁹, was also inhibited by Mal-I (Supplementary Fig. 6). This assay recapitulates one of the pathophysiological properties of meningococcus, namely the induction of a signaling pathway, which lead to the stabilization of growing colonies under shear stress. Together, the above findings indicate that NANAs participate in β_2 AR activation by the pathogen. Consistently, selective inhibition of sialyl transferases with 3Fax-Peracetyl-Neu5Ac (3FP-Neu5Ac) was sufficient to abolish meningococcus-induced recruitment of β -arrestin-GFP (Fig. 3d, e) and downstream signaling (i.e., ezrin recruitment, Fig. 3d, f, g) in human endothelial cells. The observation that both glycan chains of the β_2 AR are necessary to support receptor activation and that spacing of the glycans in this context is critical (see Fig. 2) suggests that both

glycan residues in question are sialylated. To address this issue, we took advantage of a trypsin cleavage site at the end of the β_2 AR N-terminus to measure Neu5Ac present in isolated glycosylated receptor N-terminal fragments (Fig. 4, procedure outlined in Supplementary Fig. 7). The N-termini of HA-tagged wild-type (wt)- β_2 AR (+11)- β_2 AR, N6A- β_2 AR, and N15A- β_2 AR released from tryptic digestions of transfected HEK-293 cells were immunoprecipitated with anti-HA antibody-coated beads (Fig. 4a, b). The identity of the fragments recognized by the anti-HA antibodies was confirmed by mass spectrometry (MS) (Fig. 4c). NANAs present in the glycan chains were then released by heating the samples in acidic conditions and quantified by a colorimetric assay (Fig. 4d). The amount of NANA contained in the N-termini of N6A- β_2 AR and N15A- β_2 AR was roughly half of that present in wt- β_2 AR or (+11)- β_2 AR. These data strongly support the conclusion that both glycan chains at positions 6 and 15 can individually undergo terminal sialylation and that both glycan chains from wt- β_2 AR and (+11)- β_2 AR are similarly sialylated.

NANAs participate in pathogen species selectivity. Neu5Ac and Neu5Gc, which differ by a single oxygen atom²⁶, are the predominant NANAs in mammals²⁷. Neu5Gc is synthesized from Neu5Ac by the cytidine monophosphate-*N*-acetylneuraminic acid hydroxylase (CMAH)²⁸. Only Neu5Ac is present in humans, because of CMAH genetic inactivity²⁶, while Neu5Gc is predominant in other mammals. To investigate whether the exposed Neu5Ac in the N-glycan chains might contribute to species specificity of meningococcal interaction with the β_2 AR, CMAH was deleted in C166 mouse endothelial cells (Supplementary Fig. 8) to produce a mouse cell clone that only expresses human-type Neu5Ac-containing glycans. To demonstrate the enrichment in Neu5Ac in the CMAH-knockout (KO) clone, we took advantage of WGA selectivity for Neu5Ac compared to Neu5Gc²⁹. Precipitation assays were performed with WGA-coated agarose beads from extracts of wt and CMAH-KO cells expressing exogenous β_2 AR-GFP. The glycosylated form of β_2 AR-GFP was substantially more abundant in precipitations from C166-CMAH-KO cells providing indirect evidence that these cells contain a higher proportion of the Neu5Ac form than parental C166 (Supplementary Fig. 8e). Experiments were then performed using a pilated non-capsulated Opa+ *N. meningitidis* strain, and CECAM-transfected mouse endothelial cells to allow meningococcal adhesion (see Fig. 2a). In parental C166 cells expressing exogenous human YFP-tagged β_2 AR, the receptor was not redistributed under bacterial colonies, contrasting with the significant accumulation that could be quantified in CMAH-KO cells (Fig. 5a). Consistently, full or partial ezrin recruitment was observed in C166 clones lacking CMAH, contrasting with the absence of recruitment in the parental control C166 cell line (Fig. 5b). Furthermore, pre-incubation with the selective agonist isoproterenol, to induce endocytosis of the endogenous β_2 AR, inhibited this signaling, as observed previously in human endothelial cells. These data indicate that the absence of CMAH indeed contributes to the species selectivity of meningococcus for humans.

Pulling forces applied on glycan chains activate the β_2 AR. We next aimed at determining how pili binding can induce allosteric β -arrestin-selective activation of the β_2 AR. Bacteria growing at the cell surface of endothelial cells are permanently submitted to forces exerted by blood flow. In addition, pilus retraction, powered by the PilT ATPase, generates nanonewton forces^{16,17} independently of the hemodynamic flow. We hypothesized that mechanical forces applied via Tfp to receptors might produce

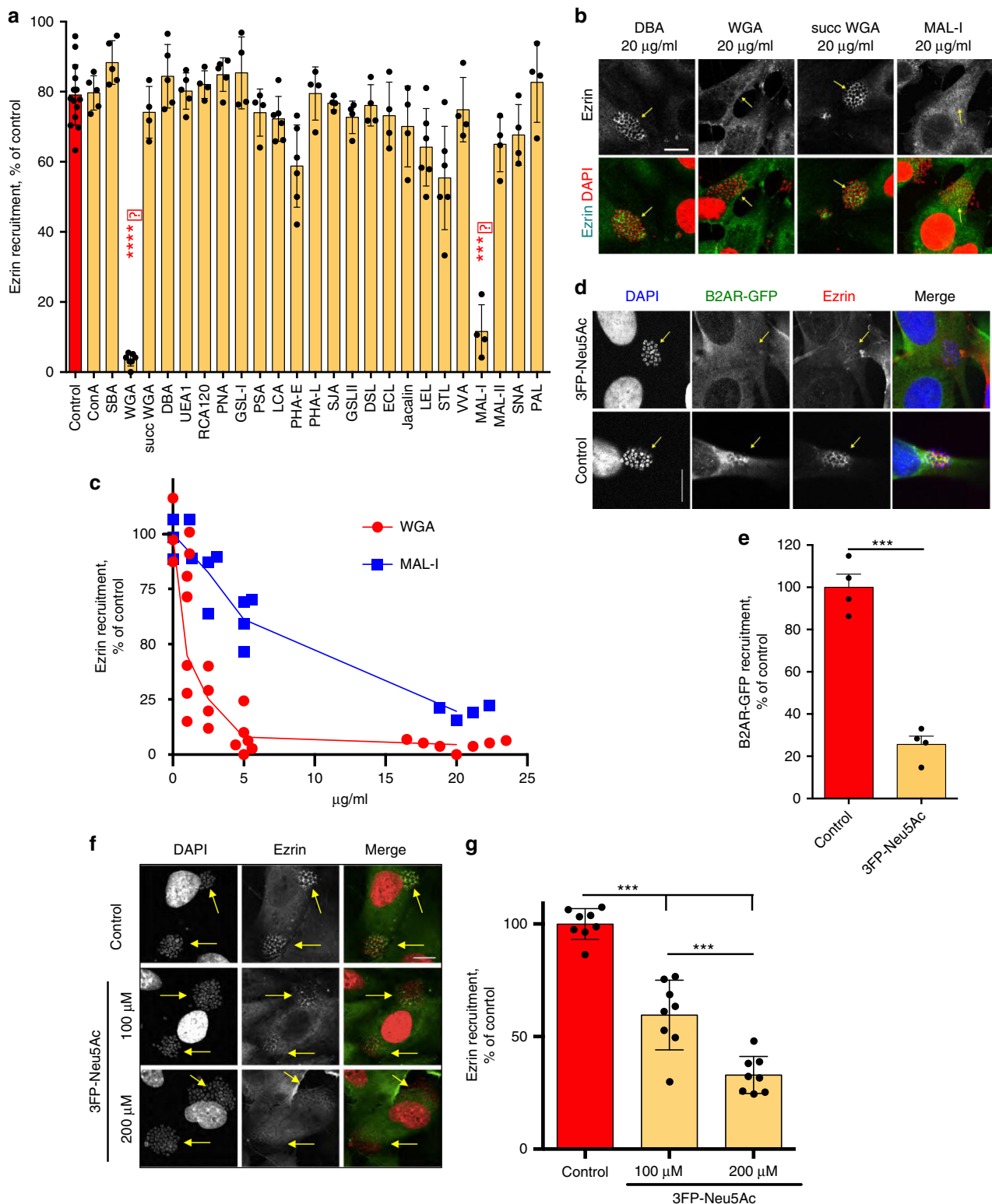


Fig. 3 Lectins and sialyl-transferases inhibitors prevent meningococcus signaling. hCMEC/D3 cells were incubated for 1 h with the indicated lectins (full names in Supplementary Table 1) at a concentration of 20 µg/ml. Cells were then washed, infected with wild-type *N. meningitidis*, and processed for the analysis of ezrin recruitment under bacterial colonies. **a** Histograms correspond to mean values ± SEM. Data were analyzed by ANOVA with Dunnett's multiple comparisons test. *** $P < 0.001$, **** $p < 0.0001$, control (no lectin) vs. incubation with the indicated lectin. **b** Representative immunofluorescence images. HCMEC/D3 cell nuclei and bacterial DNA (small, grouped dots) are labeled with DAPI; anti-ezrin antibodies stained ezrin. Bar: 10 µm. **c** Dose-dependent inhibition of signaling by WGA and Mal-I. **d, e** Inhibition of β -arr2-GFP recruitment under bacterial colonies by the selective inhibition of sialyl-transferases with 3Fax-Peracetyl Neu5Ac (3FP-Neu5Ac). **d** Representative pictures of the dose-response experiment in **e**, bar: 10 µm, *** $p < 0.001$, $n = 3$. **f, g** Inhibition of ezrin recruitment under colonies by 3FP-Neu5Ac. **f** Representative pictures of the dose-response experiment in **g**, bar: 10 µm, *** $p < 0.001$, $n = 3$ (ANOVA)

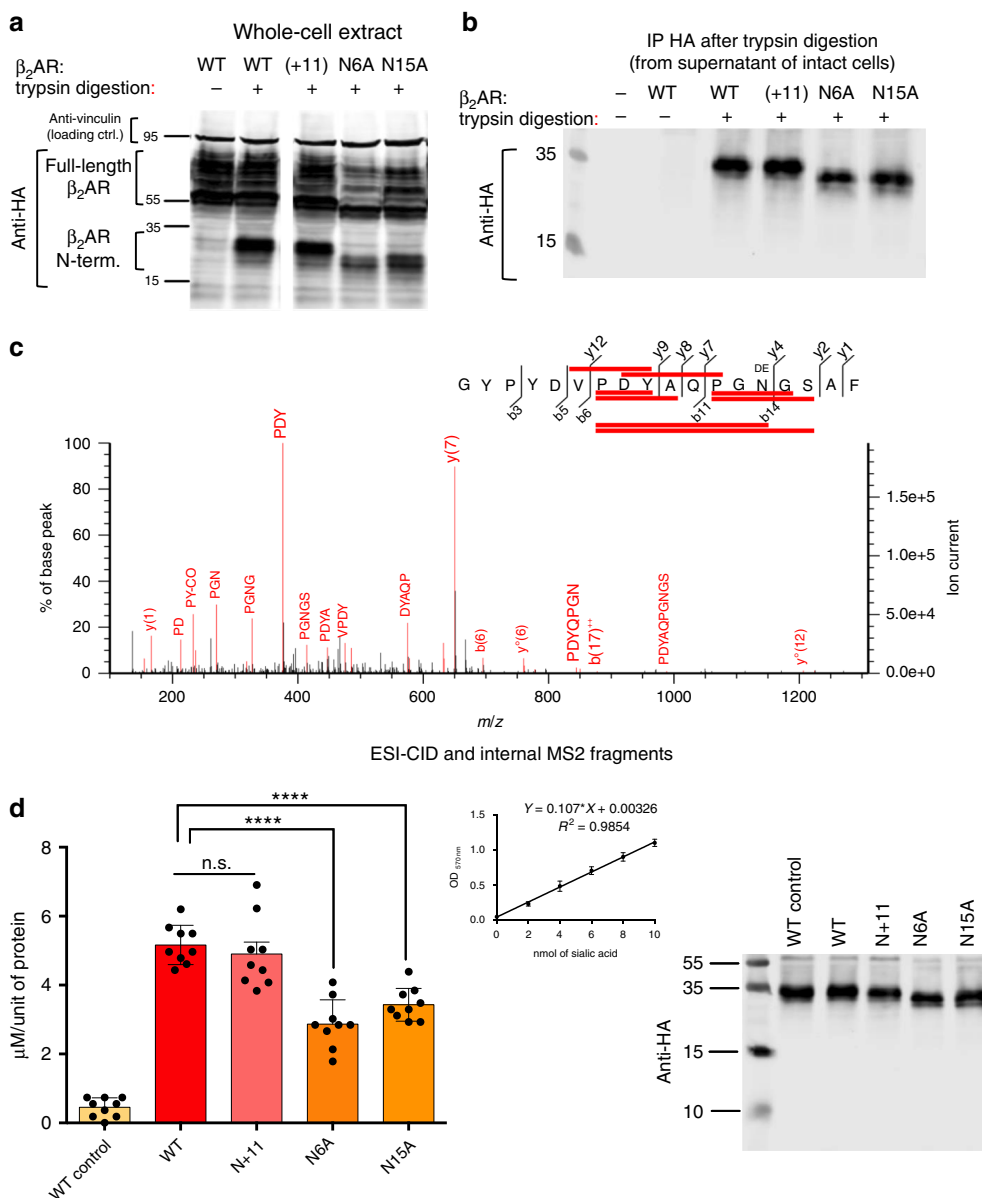


Fig. 4 Sialylation of N-glycan chains at positions 6 and 15 of the β_2 AR N-terminus. **a** Western blot analysis of whole-cell lysates from HEK-293 cells expressing wt or mutant HA-tagged β_2 AR (description in Supplementary Fig. 7a). Intact cells were submitted to trypsin digestion (see Methods) to cleave the N-terminus of surface receptors. After the addition of Laemmli buffer directly to the mixture and PAGE separation, WB membranes were probed with the indicated antibodies. The 36-residue glycosylated N-termini produced by the tryptic digestion migrate faster than the corresponding un-cleaved receptors. The N-termini from N6A and N15A β_2 AR, which contain only one Asn-branched glycan chain display a lower apparent MW than wt or (+11) β_2 AR. **b** Supernatants of the same cells submitted to trypsin digestion were incubated with anti-HA-tag-coated beads to immunoprecipitate the released N-termini. **c** Immunoprecipitated N-termini were additionally digested with PNGase and chymotrypsin to generate glycan-free peptides for MS analysis. The shown chromatogram corresponds to the analysis of the wt β_2 AR N-terminus. Spectrum annotation (b- and y-ion series) was done according to nomenclature of peptide fragmentation⁶¹. Indicated matched internal fragments (red bars) correspond to higher intensity peaks, mostly proline-starting fragments⁶² produced by higher energy collisional dissociation (HCD)-type high-resolution mass spectrometer. Indeed, the presence of proline residues causes increased peptide fragility at their N-terminal side during collisional-induced decay (CID)⁶³. The ^{DE}N residue corresponds to the change of an asparagine residue into an aspartic acid due to the enzymatic (PNGase) removal of N-linked glycans. **d** Receptor N-termini bound to HA-coated beads were heated in acidic conditions to release Neu5Ac from the glycan chains; liberated sialic acid was quantified by a colorimetric assay (see Methods). **d** Left panel: amount of sialic acid released from the indicated N-termini. “WT control” corresponds to a sample of wt β_2 AR bound to HA beads maintained in PBS buffer without acidic treatment. Values of Neu5Ac obtained with the assay were calibrated with the actual protein concentration of the N-terminal fragments determined by quantifying WB images (LI-COR software) (ANOVA: **** $p < 0.0001$, 9 samples for each condition, prepared from 3 independent batches of transfected cells). Middle panel: standard curve. Right panel: representative WB used to quantify the indicated N-terminal fragments. n.s., not significant

their activation. To address this hypothesis, in a dedicated experimental protocol designed to minimize the exogenous forces applied on bacteria (see Methods), wt and mutant meningococci deficient in PilT activity (ΔT^{30}) were compared for their capacity

to induce signaling in hCMEC/D3 cells. Supporting the contribution of pilus retraction in receptor activation, ezrin recruitment was significantly impaired under ΔT meningococci compared to wt under basal, static conditions (Fig. 6a, b). In

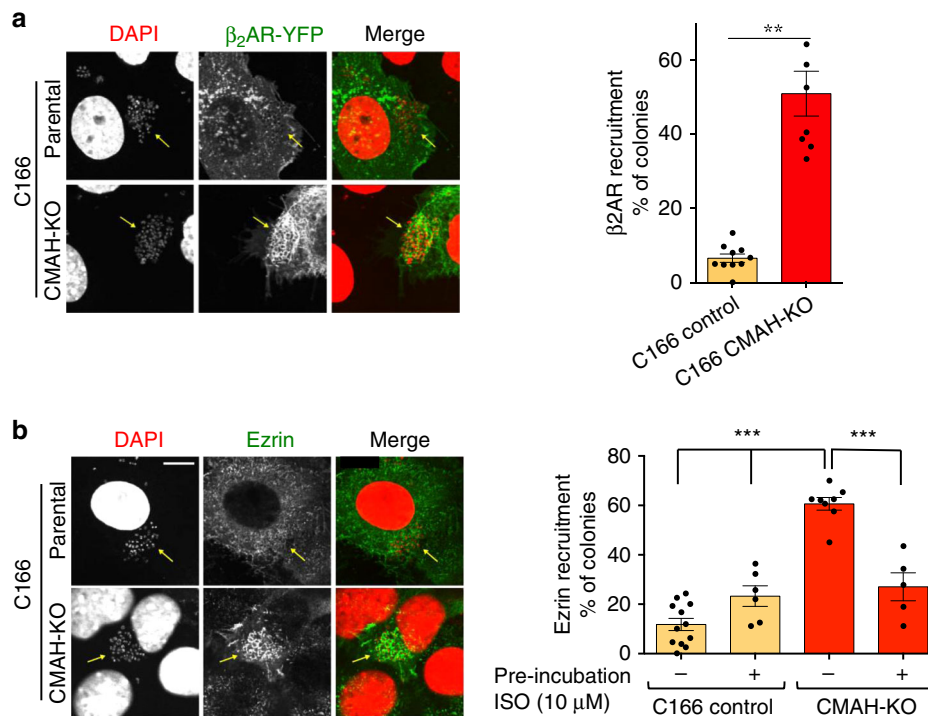


Fig. 5 Terminal Neu5Ac contributes to meningococcus species specificity. **a** A CMAH-KO clone, in which endogenous CMAH was mutated on both alleles (causing reading frame shift) using a CRISPR/Cas9 approach (Supplementary Fig. 8), was derived from C166 mouse endothelial cells. Wild-type or CMAH-KO C166 cells expressing exogenous YFP-tagged human β_2 AR and CEACAM-1 (to induce mock bacterial adhesion) were infected with piliated non-capsulated Opa+ (2C43 SiaD- Opa+) meningococci. Receptor distribution was examined by fluorescence microscopy. Receptor accumulated under bacterial colonies (arrows) in CMAH-KO but not in wild-type cells, reflecting the requirement of Neu5Ac (instead of Neu5Gc) for pili interaction with the β_2 AR. Left panel: representative images, bar: 10 μ m. Right panel: recruitment of β_2 AR was quantified and expressed as the % of bacterial colonies that recruited transfected β_2 AR-YFP. Mean values \pm SEM. Statistical significance was calculated by *t* test, ***p* < 0.01. **b** To examine the reconstitution of a typical β_2 AR-dependent signaling pathway induced by meningococcus in the CMAH-KO C166 clone, cells were transfected with a plasmid encoding human CEACAM-1, pre-incubated or not with isoproterenol for 1 h (to induce the endocytosis of endogenous β_2 AR), and then exposed to piliated non-capsulated Opa+ (2C43 SiaD- Opa+) meningococci. Ezrin recruitment under colonies was used as a marker of β_2 AR signaling. ****P* < 0.001 (ANOVA, *n* = 3 in duplicate). Representative images are shown in the left panel, bar: 10 μ m

subsequent experiments, adherent meningococci were submitted to orbital rotation aimed at applying a centrifugal force on bacteria. Rotation significantly enhanced ezrin accumulation under bacterial colonies both in wt and ΔT meningococci. However, the effect was significantly larger for wt colonies, indicating that maximal signaling depends on the additive effect of PilT-induced pilus retraction and exogenous forces applied to bacteria. Isoproterenol pre-treatment inhibited meningococcus signaling both under static conditions and after orbital agitation.

The potential mechano-transducing role of the β_2 AR revealed in context of meningococcal infection was further investigated using Neu5Ac-selective WGA-coated beads in a reconstituted cell system. Beads were added to HEK-293 cell monolayers for 1 h, to promote WGA binding to Neu5Ac, and then submitted to orbital rotation. In the absence of rotation, only basal translocation of ezrin and β_2 AR was observed under the beads lying on cells expressing exogenous β_2 AR and myc-tagged β -arrestins. Rotation appliance significantly enhanced ezrin accumulation, but no accumulation was obtained in cells expressing the AT1R-YFP as receptor, or in cells expressing β_2 AR alone (Fig. 7). Thus, traction forces specifically applied on the β_2 AR via its glycans, even in the absence of bacteria, can induce β -arrestin-selective activation and downstream ezrin recruitment. In contrast to bacterial-mediated activation, however, the requirement for tandem glycan chains at a specific distance was not observed for the activation via WGA-coated beads. Indeed, wt β_2 AR or β_2 AR mutants lacking either N-glycan chain (N6A or N15A) were activated to a similar extent.

Discussion

From our data it appears that the activation of the β_2 AR by meningococcal Tfp involves traction forces applied via the bacterial pili on glycan chains located in the N-terminal extracellular region of the receptor. Part of the forces is generated intrinsically by the bacterial PilT ATPase, which controls Tfp retraction, extrinsic shear stress forces created by blood flow, and applied on bacteria providing the additional mechanical signal. Although previous studies reported that host-pathogen interactions can involve host cell glycans³¹ and that signaling properties of some receptors can be modulated by glycosylation^{32,33}, the GPCR activation mechanism reported here is unique. It involves NANAs terminating two glycan chains located at a specific distance in the receptor N-terminus, independently of the protein backbone. Interestingly, the amino-acid residues mediating the activation of β_2 AR signaling have been identified for the major pilus component PilE³⁴. The PilE C-terminus domain, which contains a disulfide-bonded region (D-region), was found to be critical for inducing activation of the host cell response. In particular, a hyper-variable region confers specificity for signaling in endothelial cells via the β_2 AR. Among the four residues that are critical for signaling, two are positively charged lysine residues, an observation that fits well with the fact that this region would interact with the negatively charged NANAs terminating the β_2 AR glycan chains. The particular distance of the receptor glycan chains required for bacterial-induced signaling activation probably reflects structural constraints, such as pilin orientation or

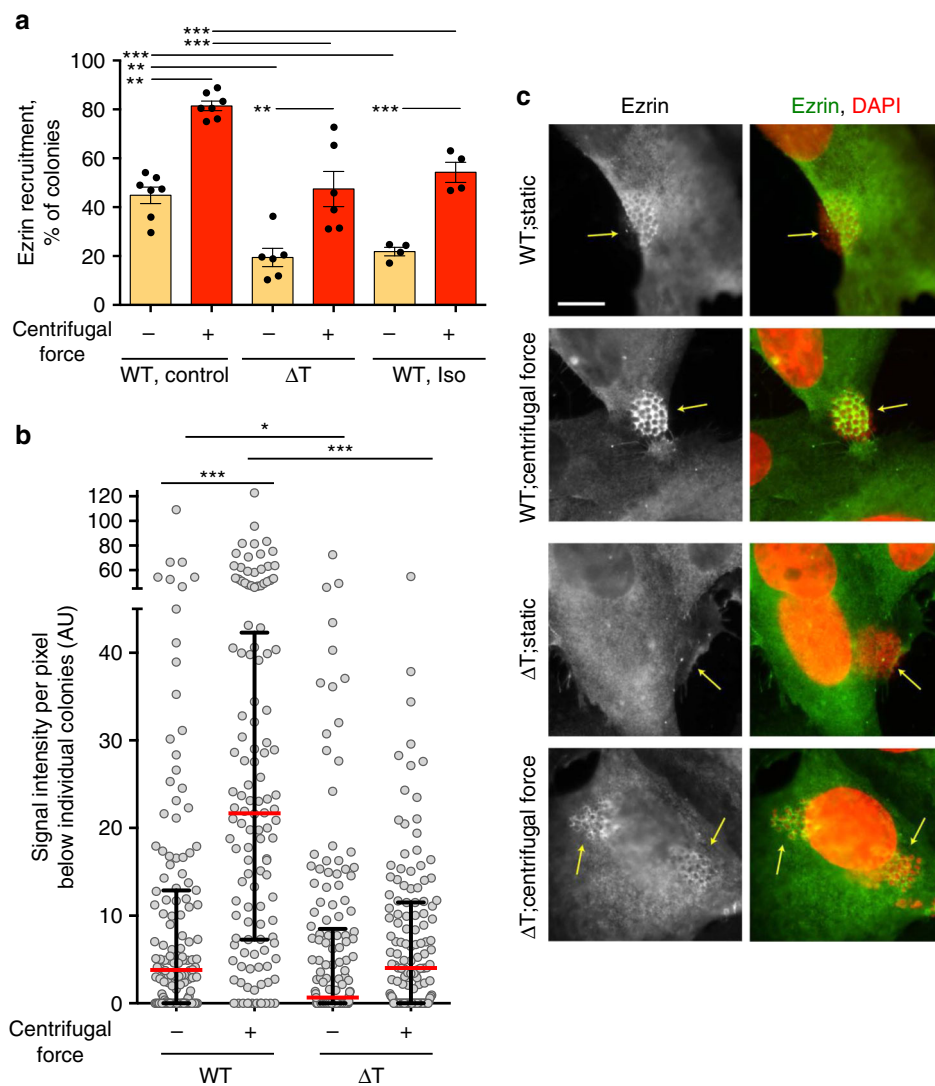


Fig. 6 Pili- and environment-generated forces concur to the β_2 AR activation. **a** Endothelial hCMEC/D3 cells were infected with wild-type or ΔT *N. meningitidis* and submitted or not to centrifugal forces with or without isoproterenol pre-incubation. A particular attention was paid to ensure that under “static condition” cells were submitted to minimal shear stress (see Methods). Cells were then processed for the analysis of ezrin recruitment under bacterial colonies as in Fig. 3. Histograms correspond to mean values \pm SEM. Data were analyzed by ANOVA with Dunnett’s multiple comparisons test. *** $P < 0.001$; ** $p < 0.01$. **b** The intensity of ezrin recruitment was also quantified for each colony individually (see Methods) and expressed as arbitrary intensity per pixel below colonies. Each dot represents one colony. Median values (in red) with interquartile ranges are shown. A Kruskal-Wallis test was used to determine significant differences between median values. *** $P < 0.001$; * $p < 0.05$. **c** Representative images, bar: 10 μ m

spacing within the bacterial pilus. Supporting this hypothesis is the cooperativity that exists between the pilin subunits for full receptor activation (Supplementary Fig. 9).

The β_2 AR is not the only GPCR displaying two glycan chains in its N-terminus at the “meningococcus infection-permissive” distance of 8–9 residues, since this feature is found in roughly 10% of GPCRs. However, only few of them are expressed in endothelial cells (i.e., bradykinin B2R, angiotensin AT2R, acetylcholine M3R) and they are not necessarily pre-associated with the adhesion receptor CD147 as the β_2 AR, which is a key parameter in terms of meningococcal pathophysiology¹¹. Possibly because of the limited number of receptors that are potentially activated by pili, the recruitment of ezrin in response to mechanically stimulated β_2 AR might be restricted to cell types expressing high concentrations of β -arrestins, such as endothelial cells. Indeed, a robust recruitment of ezrin under meningococcal colonies⁹, and to WGA-coated beads in the HEK-293-reconstituted cell system, required the expression of exogenous β -arrestin, while these cells

contain endogenous β -arrestins. Although β_2 AR is accountable for most of the meningococcus-induced signaling in endothelial cells, a residual 10–15% ezrin recruitment under bacterial colonies was still observed upon receptor KO in hCMEC/D3 cells, consistent with the existence of some minor β_2 AR-independent signaling.

Recent structural and molecular studies have markedly expanded our comprehension of the molecular mechanisms, which control GPCR function³⁵. For class A GPCRs (the class to which the β_2 AR belongs to) that are activated by non-peptide ligands, the orthosteric binding site, through which endogenous agonists activate the GPCR, is generally located in the middle of the seven-transmembrane helical bundle, between the extracellular loops and the middle plane of the plasma membrane. Allosteric ligands modulate receptor binding and activity by binding to sites, distinct from the orthosteric site, which can be located in variable positions. The binding site for a “small-molecule” allosteric modulator of the β_2 AR was localized, for

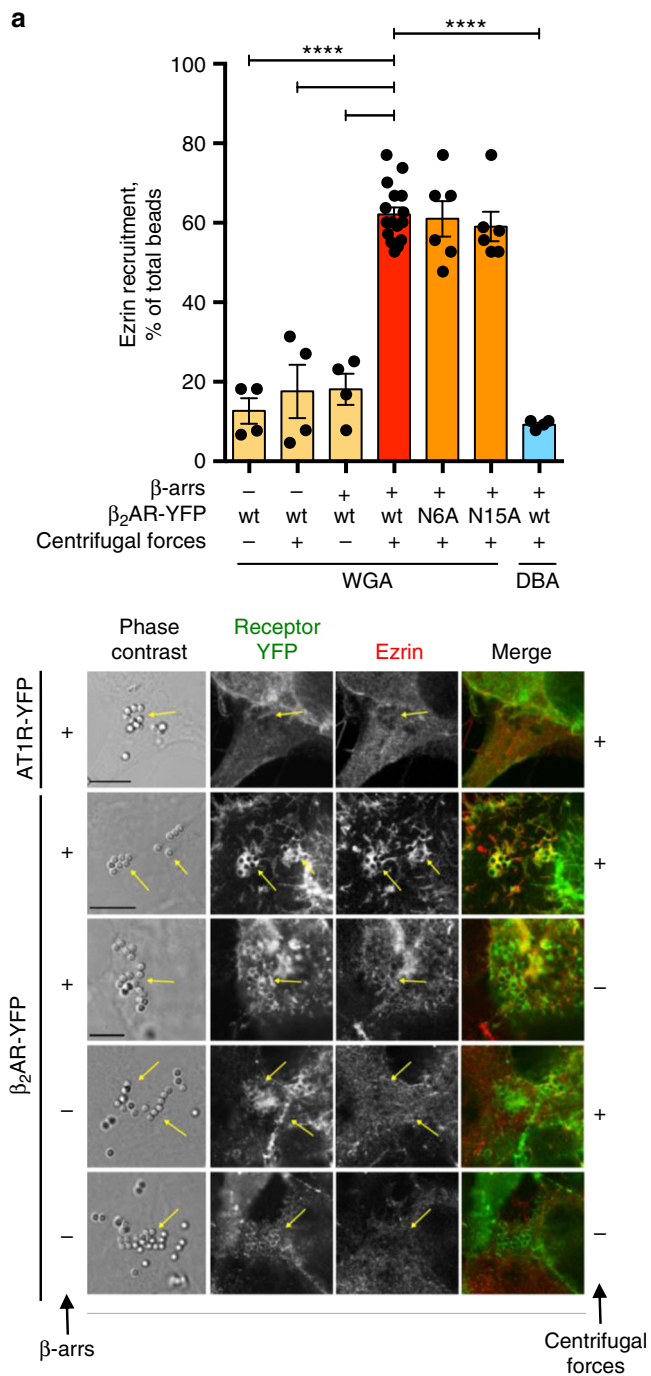


Fig. 7 Tractions forces applied via lectin-coated beads activate the β_2 AR. **a** Neutravidin-agarose beads (1 μ m) were coated with biotinylated WGA or control dolichos biflorus agglutinin (DBA) as described in Methods. The latter lectin has specificity for α -linked *N*-acetylgalactosamine. They were then let to sediment for 1 h on HEK-293 cells expressing the indicated YFP-tagged wt of mutant receptors, with or without exogenous β -arrestins (β -arrest), in 2 cm² well plates before 15 min of orbital rotation at 100 r.p.m. Cells were fixed and labeled with anti-ezrin antibodies. Ezrin recruitment under beads was used as a marker of receptor signaling. **** P < 0.0001, ANOVA. **b** Representative images of experiments in **a** are shown, bar: 10 μ m. The AT1R was used as a negative control

example, in a pocket formed by the cytoplasmic ends of transmembrane segments 1, 2, 6, and 7, the intracellular loop 1, and the helix⁸³⁶. In contrast, an allosteric modulator of the M2 muscarinic receptor was positioned directly above the orthosteric

binding site, engaged in extensive interactions with the extracellular vestibule, including the second extracellular loop³⁷. A recent article identified the exosite for the aryloxyalkyl tail of salmeterol, a selective β_2 AR agonist with long-lasting action. Interestingly, the aryloxyalkyl tail of salmeterol extends toward the extracellular surface of the receptor, occupying a cleft formed by residues from extracellular loops 2 and 3 and the extracellular ends of the transmembrane segments 6 and 7³⁸. These observations, together with the fact that the orthosteric site for peptide ligands can involve the N-terminal domain and is stabilized by extracellular loops³⁹, suggest a mechanism for the pilus-mediated activation of the β_2 AR, whereby the traction exerted via bacterial pili bound to glycan chains engages the helical bundle region, via the mobilization of the N-terminal region, which establishes interactions with the transmembrane core. This model is supported by the observation that applying pulling forces on the β_2 AR, via beads coated with lectins specific for the exposed NANA terminating the glycan chains of the receptor, reproduces a pili-like activation.

An interesting issue is whether the mechanical activation of the β_2 AR would be affected by the simultaneous presence of circulating catecholamines in vivo. Experiments were performed in which isoproterenol and bacteria were added simultaneously to cells in culture (Supplementary Fig. 10). This treatment markedly inhibited the recruitment of both receptor and ezrin under the colonies, while the isoproterenol-promoted receptor endocytosis was maintained in these cells, probably explained by the fact that not all receptors are engaged by bacterial pili in a given cell and by the use of saturating concentrations of the agonist that target all available receptors. The pathophysiological significance of these findings is however difficult to appreciate, since in vivo, catecholamine concentration is usually below the K_D for the β_2 AR, with only a small fraction of receptors bound and potentially internalized. Noteworthy, in case of meningococcus infection with sepsis, catecholamine infusion is part of the recommended supportive treatment; in addition to its action on cardiovascular parameters, it might limit the infection by enhancing receptor endocytosis.

The ligand-independent mechanical activation of other class A GPCRs in endothelial cells (and also cardiomyocytes and fibroblasts) was reported in response to fluid shear⁴⁰, osmotic stress^{40,41}, or to uniaxial traction⁴². GPCR coupling to $G_{q/11}$ was found to be involved in signal transduction of several mechanically activated receptors in the context of myogenic vasoconstriction⁴³. However, reminiscent of our findings, it was also reported that mechanical stretch can induce β -arrestin-selective signaling downstream of AT1Rs, the conformational change in β -arrestin induced by the stretch being similar to that induced by a β -arrestin-biased ligand⁴⁴. The mechano-transducing properties of the β_2 AR reported here indicate potential additional functions for this receptor in the vascular system. For example, macrophages, which adhere to and roll over endothelial cells before penetrating into tissues, express the NANA-specific sialoadhesin Siglec-1³¹, which share the same glycan specificity as Mal-I. Siglec-1 binding to endothelial cell β_2 AR might induce some signaling in the context of cell-to-cell interactions and/or diapedesis.

Neisseria meningitidis is a strict human pathogen. In addition to factors, which contribute to the survival of bacteria in the blood, such as transferrin binding or resistance to the complement, our data indicate that the mechanism of meningococcus-induced signaling itself contributes to species selectivity. Indeed, the presence of a single additional oxygen atom in Neu5Gc, the predominant mammalian form of NANA, compared to Neu5Ac, the predominant human form, is sufficient to impede pili binding to β_2 AR glycans and subsequent Tfp-mediated mechanical activation of the receptor. Our data suggest that additional factors

might also contribute to meningococcal selectivity for its host. Indeed, mouse endothelial cell expressing Neu5Ac following inactivation of CMAH showed impaired initial adhesion. This observation indicates that the adhesion receptor (CD147 in humans) might also contribute to pathogen selectivity.

The *Alu*-mediated loss of CMAH about 2–3 million years ago, which determines the absence of Neu5Gc in humans and its replacement by Neu5Ac in the glycocalyx was probably maintained in humans because of some selective advantage, such as the resistance to an ancestral Neu5Gc-binding pathogen related to *P. reichenowi*, which infects non-human primates⁴⁵. Nevertheless, this early adaptation caused several pathophysiological consequences in humans, in addition to the susceptibility to meningococcal infection reported here. For example, the major erythrocyte-binding antigen-175 of *Plasmodium falciparum*, the parasite causing the most severe forms of human malaria, apparently evolved to take selective advantage of the excess of the Neu5Ac on human erythrocytes⁴⁶. Also, *Salmonella typhi*, an exclusive human pathogen that causes typhoid fever, produces a pathogenic toxin. This toxin binds to and is toxic for cells expressing glycans terminated in Neu5Ac over glycans terminated in Neu5Gc⁴⁷.

In conclusion, the β_2 AR activation mechanism by meningococcus, the specificity of this pathogen for humans, and the tether for meningococcal Tfp anchoring to endothelial cells actually implicate a common molecular element, Neu5Ac, a NANA form that is only found in humans. Traction forces applied via Tfp on Neu5Ac-terminated glycans of the β_2 AR activate the receptor. In addition to unraveling a mechanism contributing to meningococcal species selectivity, these findings represent the first example of a glycan-dependent mode of allosteric mechanical activation of a GPCR.

Methods

Cell lines. The hCMEC/D3 human cell line, which retains main features of primary brain endothelial cells and express endogenous β -arrestins, β_2 AR, and CEACAM-1, was described previously⁴⁸ (a kind gift from Pierre-Olivier Couraud, Institut Cochin, Paris, France). hCMEC/D3 cells were grown at a density of 25×10^3 cells per cm^2 in flasks coated with $5 \mu\text{g}/\text{cm}^2$ rat tail collagen type I (BD Bioscience), in EBM-2 medium (Lonza) supplemented with 5% of fetal calf serum (FCS), 1% of penicillin–streptomycin, $1.4 \mu\text{M}$ hydrocortisone, $5 \mu\text{g}/\text{ml}$ ascorbic acid, 10 mM HEPES, and 1 ng/ml basic fibroblast growth factor at 37°C in a humidified incubator in 5% CO_2 .

HEK-293 (ATCC CRL-1573) cells were grown in flasks coated with 0.01% poly-L-lysine (Sigma) in Dulbecco's modified Eagle's medium (DMEM) supplemented with 10% FCS and 1% penicillin–streptomycin in 5% CO_2 -enriched humidified atmosphere.

The mouse endothelial cell line C166 (ATCC CRL-2581), which express endogenous β_2 AR, was grown in DMEM supplemented with 10% FCS and 1% penicillin–streptomycin in 5% CO_2 -enriched humidified atmosphere.

The BHK cell line (ATCC PTA-3544) was grown in DMEM supplemented with 10% FCS and 1% penicillin–streptomycin in 5% CO_2 -enriched humidified atmosphere.

Bacterial strains. Serogroup C meningococcal strain 8013, designated as 2C43⁴⁹, the non-encapsulated Opa expressing derivative, designated as SiaD-2C43⁸, and a mutant deficient in PilT activity derivative designated ΔT^{30} were used as specified in the Methods section (own collection). Bacteria were grown on Gonococcal Broth (GCB) agar plate with Kellogg's supplement and the appropriate antibiotics. Kanamycin was used at $100 \mu\text{g}/\text{ml}$ and chloramphenicol was used at $6 \mu\text{g}/\text{ml}$. Other strains have been used either variant of PilE pilin (namely, PilESA and PilESB) or deleted of *pilV* gene (ΔPilV) in the context of PilESA or PilESB variants, or deleted of *pilE* gene (ΔPilE)^{5,10,50}.

Treatment of cells and infections. On the day of infection, bacteria grown from an overnight culture on GCB agar plate were adjusted to $\text{OD}_{600} = 0.05$ and incubated for 2 h at 37°C in pre-warmed cell culture medium. Bacteria were added to cells at a multiplicity of infection of 100 and allowed to adhere for 30 min. Unbound bacteria were washed with fresh medium and infection was allowed to proceed for 2 h.

hCMEC/D3 cells were infected with wt 2C43 strain or its ΔT derivative (Figs. 3, 5, and 6). HEK-293 and C166 cells were infected with the non-encapsulated SiaD-2C43 strain and its derivatives: ΔPilV , ΔPilE and PilESA, or PilESB variants.

Lectins used in infection-inhibition experiments were purchased from Vector laboratories (the complete list is shown in Supplementary Table 1 and used at a final concentration of $20 \mu\text{g}/\text{ml}$, as recommended by the manufacturer). They were added 1 h before infection and again after 30 min of infection when fresh medium was added. Whereas MAL-I did not inhibit bacterial adhesion to host cells, WGA partially inhibited bacterial adhesion at the used concentration. Since we showed previously that signaling was independent of adhesion, ezrin recruitment was examined below adherent colonies.

To quantify the role of pilus retraction and/or that of external forces like shear stress on ezrin recruitment, we set up a particular protocol of infection. To achieve stringent static conditions, cells were not washed after the 2 h infection and 16% paraformaldehyde (PFA) was added gently, directly to the infection medium (final PFA concentration: 4%). To apply continuous centrifugal forces mimicking shear stress, cells were placed on an orbital shaker at 100 r.p.m. Fixation was performed by adding 16% PFA on top of the cells.

Potassium depletion experiments were performed as described⁸. Briefly, cells were rinsed with K^+ -free buffer (140 mM NaCl, 20 mM HEPES, 1 mM CaCl_2 , 1 mM MgCl_2 , 1 mg/ml D-glucose, pH 7.4) and then incubated in hypotonic buffer (K^+ -free buffer diluted 1:1 with distilled water) for 5 min. Cells were then washed three times in the K^+ -free buffer and incubated for 20 min at 37°C in the same buffer. In order to maintain proper bacterial growth during the potassium depletion assay, cell culture medium was added to K^+ -free buffer (1:5) during meningococcal infection.

For sialyl-transferase inhibition experiments, various concentrations of the sialyl-transferase inhibitor 3FP-Neu5Ac (Merck) were added to cell culture medium during 3 weeks prior to the experiments. At high concentrations ($\geq 300 \mu\text{M}$), 3FP-Neu5Ac drastically inhibited adhesion of meningococci to endothelial cells. Consequently, lower concentrations of the drug were used (100 and $200 \mu\text{M}$), which were compatible with adhesion, although markedly inhibiting ezrin recruitment.

Flow experiments. Cells were grown on disposable flow chambers (Slide VI, IBIDITM) coated with $5 \mu\text{g}/\text{cm}^2$ rat tail collagen type I. In total, 10^7 bacteria were added on top of the cells and allowed to adhere for 15 min without flow. Subsequently, a flow corresponding to a shear stress of $0.4 \text{ dyn}/\text{cm}^2$ was applied using a syringe pump (Harvard Apparatus). To quantify the surface of colonization, cells and bacteria were fixed using 4% PFA during 20 min; bacteria were then stained using anti-2C43 rabbit antibodies (1:1000, generously provided by Dr. P Mangeat CNRS, UMR5539, Montpellier, France) and cells were stained using phalloidin. Bacteria were analyzed using an Incucyte S3 analysis system (Sartorius). Four images were acquired per IBIDI channel ($\times 20$ magnification). Surface of colonizing bacteria was determined using the Incucyte S3 software and expressed as median of colonization index with interquartile range (total surface of bacteria in μm^2 over total surface occupied by cells in μm^2).

Immunofluorescence on Nm-infected cells. After infection, cells were washed three times and fixed for 20 min in PBS containing 4% PFA and permeabilized for 5 min in PBS containing 0.1% Triton X-100. Cells were incubated in PBS containing 0.1% bovin serum albumin (BSA) for 30 min and then with polyclonal anti-ezrin rabbit antibody (1:1000) in PBS containing 0.1% BSA for 1 h. After three washings in the same buffer, DAPI (4',6-diamidino-2-phenylindole; $0.5 \mu\text{g}/\text{ml}$) was added to Alexa-conjugated secondary antibodies for 1 h (A-11003 and A-11035, Thermo Fisher Scientific, 1:200). After additional washings, coverslips were mounted in Mowiol. Image acquisition was performed on a laser-scanning confocal microscope (Leica TCS SP5). Images were collected and processed using the Leica Application Suite AF lite (Leica) software.

Expression and purification of pilin recombinant proteins. Recombinant His-tag pilin fusion proteins were produced as periplasm-directed proteins as described before⁵¹. Fragments of *pilE*, *pilV*, and *comP* genes lacking the region coding for the amino-acid residues 1 to 28 of the full-length proteins were amplified by PCR from the existing plasmids pmal-PilE, pmal-PilV, and pmal-ComP⁹ and subcloned in pET22b (Novagen) between *Bam*HI and *Xho*I restriction sites. The primer sequences used are provided in Supplementary Table 2.

The pET22b plasmid carries a signal peptide to direct the recombinant protein into *Escherichia coli* periplasm, where disulfide bond formation can occur. These plasmids were transformed in the *E. coli* BL21 (DE3) (Thermo Fisher Scientific) strain and grown at 30°C for 3 h in lysogeny broth (LB), and 16 h at 16°C in LB + 1 mM isopropyl β -D-1-thiogalactopyranoside. The fusion proteins were extracted from the periplasm and loaded onto a Ni-NTA column (Thermo Scientific). Bound His-pilin were eluted using elution buffer (50 mM NaH_2PO_4 , pH 8, 300 mM NaCl, 250 mM imidazole) and then dialyzed using an Amicon 10k device and resuspended in PBS at a concentration of 1 mg/ml. Purity and quality of recombinant proteins were assessed by sodium dodecyl sulfate-polyacrylamide gel electrophoresis (SDS-PAGE) and Coomassie blue staining.

Plasmids and transfections. hCMEC/D3 and C166 cells were transfected using the Amaxa Nucleofactor Kit for HUVEC (Amaxa Biosystem), according to the manufacturer's instructions, with 2 µg of plasmids per 10⁶ cells. HEK-293 cells were transfected using 1 µl of Lipofectamine 2000 (Invitrogen) and 0.1 µg of each plasmid per 100 µl of final mix. BHK cells were transfected using GeneJuice Transfection Reagent (Novagen) according to the manufacturer's instructions. Cells (10 × 10⁶) were transfected with plasmid DNA containing HA-EC1-TM1β₂AR-YFP (5 µg) and processed with HTRF 44 h later. The plasmid encoding HA-EC1-TM1β₂AR-YFP was constructed using a two-step procedure. First, the YFP cDNA (pEYFP-N1 vector; Clontech) was amplified by PCR using primers containing *Bst*EII site. The PCR product was then subcloned in phase downstream of the codon for V67 in the HA-β₂AR-YFP plasmid⁵² using the *Bst*EII site. The plasmid was sequenced to verify the phase and the absence of undesired mutations (DNA sequence facility, Institut Cochin).

Construction of plasmids coding for myc-βarr1/2 and GFP-βarr2⁵³, the human β₂AR fused to YFP (β₂AR-YFP)⁵⁴, the AT1R⁵⁵ were described previously. The plasmid encoding CEACAM-156 was kindly provided by Dr. Mumtaz Virji (Department of Cellular and Molecular Medicine, School of Medical Sciences, University of Bristol, Bristol, UK). The plasmid encoding the mouse β₂AR fused to YFP (β₂AR-YFP) was obtained by PCR amplification from mouse β₂AR cDNA and subsequent sub-cloning of the PCR product into the pEYFP-N1 plasmid (Clontech) using *Xho*I and *Hind*III restriction sites. The primer sequences used (β₂AR_Fwd and β₂AR_Rv) are provided in Supplementary Table 2.

The plasmid coding for β₂AR-N6A-YFP, β₂AR-N15A-YFP, HA-AT1R-1Nglyβ₂AR, and HA-AT1R-2Nglyβ₂AR (+6 to +11 mutant) were obtained by site-directed mutagenesis of the β₂AR-YFP or the AT1R plasmids. The HA-β₂AR-(N + 11) construct, consisting of a HA-tagged β₂AR mutant in which two alanine residues were introduced between the leucine residue at position 12 and the alanine at position 13 (relative to the wt β₂AR sequence), and the HA-β₂AR-N6A and HA-β₂AR-N15A constructs were obtained by site-directed mutagenesis (QuickChange®, Stratgene).

Homogeneous time-resolved FRET. HTRF measures energy transfer of between cryptate donors (610HATAA, monoclonal antibody (Mab) anti HA-Tb cryptate, Cisbio) and acceptor fluorophores (61HISDLA, Mab anti-6HIS-d2, Cisbio) with low background in intact cells. After transfection with the appropriate HA-tagged or control constructs, HEK-293 cells or mouse BHK cells were seeded in white 96-well assay plate (Costar) at 1.5 × 10⁵ cells/well in 200 µl of DMEM supplemented with 10% fetal bovine serum. Twenty-four hours later, cells were rinsed with 100 µl of Tris/Krebs buffer (20 mM Tris-Cl (pH 7.4), 118 mM NaCl, 5.6 mM glucose, 1.2 mM KH₂PO₄, 1.2 mM MgSO₄, 4.7 mM KCl, and 1.8 mM CaCl₂) supplemented with 0.1% bovine serum albumin. Cells were then incubated in 100 µl of the same buffer with recombinant pilins (Pil: PilV, PilE, or Comp at 5 µM final concentration) containing a N-terminal 6×His-tag during 60 min at 4 °C. The anti-HA monoclonal antibody coupled with Lumi4-Terbium cryptate and the anti-6His monoclonal antibody labeled with a fluorescence acceptor molecule (d2, Cisbio, Inc.) were then added (both at 1:1000 dilution) for 60 min (room temperature (RT)) before excitation at 320 nm and reading (FRET emission at 620 and 665 nm) in a Mithras2 LB 943 HTRF reader. Owing to the high sensitivity and to the low concentration of antibodies required, the signal could be measured directly after incubation without washing out the unbound antibody. A 400 µs reading was used after a 100 µs delay to allow for decay of short-lived endogenous fluorescence signals. Fluorescence at 620 nm corresponds to the total europium cryptate signal, whereas fluorescence at 665 nm is the FRET signal. The ratio $R = (F_{665\text{ nm}}/F_{620\text{ nm}}) \times 10^4$ was computed. The FRET signal was expressed as arbitrary unit (AU), calculated using the following equation: HTRF signal AU = $(R - R_{\text{neg}})/R_{\text{neg}}$, where R_{neg} is the ratio for the negative energy transfer control (non-transfected cells incubated with the FRET-donor antibody)⁵⁷.

CRISPR/Cas9 genome editing. The ADRB2-KO cell line was obtained from human hCMEC/D3 cells using pSpCas9(BB)-2A-GFP (PX458) plasmid (a gift from Dr. Feng Zhang; Addgene plasmid #48138) and the specific guide sequence (5'-TGACGTGCTGGTCCGGCGCA-3'). hCMEC/D3 cells were transfected with the constructed plasmids (1 µg/100 µl) using AMAXA Transfection System (Lonza), HUVEC Transfection Kit (Lonza), and program HUVEC-OLD. The day after, cells were trypsinized and suspended in cold Hank's balanced salt solution/FCS (2%). GFP-positive cells were selected using an Aria 409 III Cell Sorter (BD Bioscience). Cells were seeded at decreasing densities in 6-well plates and grown to isolate proliferative clones. To select KO clones, genomic DNA was extracted using the PureLink Genomic DNA Purification Kit (Invitrogen), following the manufacturer's protocol, and the genomic region surrounding the CRISPR-targeted site was amplified by PCR. Products were purified using PCR Product Purification (Invitrogen), following the manufacturer's protocol, and then analyzed by Sanger sequencing. KO clones carrying frame-shift mutations and/or large deletion were selected and amplified.

The CMAH-KO cell line was obtained from mouse C166 cells, using lenti-CRISPRv2 (a gift from Dr. Feng Zhang; Addgene plasmid #52961⁵⁸) and the specific guide sequence (5'-TTGAGGTTGGCAACTTCAGC-3'). The plasmid was transduced in C166 cells using third-generation lentiviruses, and puromycin-resistant cells were selected by adding puromycin (4 µg/ml) to the cell culture

media 48 h after transfection. Cells were then seeded at decreasing densities in 6-well plates. Clones were selected after 2 weeks and amplified before selection.

KO clones were selected as described above.

Agarose-Neutravidin beads and incubation with cells. Before experiment, 20 µl Neutravidin beads (FluoSphere™ NeutrAvidin™, Invitrogen) of 1 µm diameter were incubated with 20 µg of appropriate biotinylated lectins (VectorLabs) in 50 µl OPTIMEM (Invitrogen) for 30 min at RT and washed twice in 500 µl OPTIMEM following centrifugation at 16,000 r.p.m. for 2 min. Beads were resuspended in 50 µl OPTIMEM. One hour before experiments, transfected HEK-293 cells were washed twice with warm OPTIMEM and incubated in serum-free OPTIMEM in 24-well plates containing 500 µl OPTIMEM per well. Ten microliters of coated beads were then added per well. Beads were incubated for 1 h without any agitation. Cells were then stirred on an orbital plate for 15 min at 100 r.p.m. and then supplemented with 8% PFA under continuous agitation. In control wells (without agitation), 8% PFA was added drop-wise to avoid fluid displacement. (In each case, the final concentration of PFA was 4%.) Fixed cells were washed and processed for ezrin immunolabeling.

Quantification and statistical analysis. Statistical analyses were performed with GraphPad Prism. Multiple comparison analyses were assessed with a non-parametric one-way Kruskal-Wallis test and Bonferroni's multiple comparison test and Dunnett's multiple comparisons test. Non-parametric two-tailed Mann-Whitney *U*-test was performed on data with only two groups. *P* values are reported in the figures and figure legends where significant. Error bars are shown as standard error of the mean (SEM) and are indicated in the figures.

To quantify the recruitment of ezrin or that of β-arrestin-GFP under bacterial colonies, cells were first treated for immunofluorescence as described above. Then, each coverslip was analyzed under a wide-field fluorescence microscope equipped with a ×100 objective, a ultraviolet filter, a 488-nm short-pass filter and a 546-nm long-pass filter. For each field, the number of colonies was counted and the presence or absence of the protein of interest below colonies was determined. The focal plane was adjusted just above the apical membrane. Recruitment of the protein of interest was counted as positive if: (i) the recruited protein was accumulated below colonies in a ring shape around the bacteria. This shape is also called honeycomb shape, and (ii) if the fluorescence intensity was greater than the general fluorescence at the plasma membrane. At least 50 colonies were observed per coverslip. Each experiment was repeated several times in triplicate. Data were examined for significance using the Prism GraphPad software.

Quantification of ezrin recruitment below colonies was also performed by measuring the intensity of fluorescence signals (as in Fig. 6b): 10 fields per slides were acquired with a Zeiss Apotome 2.0. Each colony was analyzed using the ImageJ software. Briefly, the DAPI layer and ezrin staining layer were extracted and a threshold mask was applied on the ezrin staining layer to suppress the background staining (normal ezrin staining at the plasma membrane) and to transform the layer into a black and white image. The mean value of pixel intensity below colonies reflects the total area covered by ezrin staining and is expressed as Arbitrary Intensity of ezrin recruitment.

Trypsin shaving and immunoprecipitation of β₂AR. HEK-239 cells were transfected with the indicated plasmids and cultivated for 36 h. The cells were harvested in PBS-EDTA (0.5 µM EDTA in PBS) and digested with trypsin (1 µg/ml) (Promega, catalog #V511A) according to the manufacturer's protocol at 37 °C for 1 h. Following the trypsin digestion, the cell pellets were lysed in lysis buffer (50 mM HEPES, pH 7.4, 250 mM NaCl, 2 mM EDTA, 0.5% NP-40, 10% glycerol, and complete protease inhibitor (Roche)) on ice for 30 min. Cell lysates were then centrifuged at 13,000 r.p.m. for 15 min at 4 °C. Supernatants were transferred to a fresh tube and the presence of cleaved receptor N-termini was verified by western blot. Proteins were separated on SDS-PAGE on a 10% (w/v) polyacrylamide resolving gel. The proteins were transferred to nitrocellulose membranes. Membranes were blocked with 5% skimmed milk in 0.1% TBST (Tris-buffered saline containing 0.1% Tween-20 (Sigma)) for 1 h and at RT. The membranes were incubated with primary antibodies anti-HA (Cell Signaling) (1:1000) and anti-α-tubulin (1:5000) (Sigma) overnight at 4 °C. The following day, the membranes are washed three times with 0.1% TBST and incubated with secondary antibodies IRDye® 800 CW Donkey anti-Rabbit and IRDye® 680 CW Donkey anti-Mouse (LI-COR) (1:10,000). The blots were washed two times with 0.1% TBST and one time with TBS and were developed using Odyssey® CLx (LI-COR).

The trypsin-digested supernatant was immunoprecipitated using anti-HA beads (EZview™ Red HA Agarose beads, Sigma) overnight at 4 °C. The beads were washed three times with PBS and further subjected to MS analysis or NANA detection.

MS analysis of HA-purified peptides. Trypsin-cleaved N-termini of wt and mutant β₂AR bound to HA beads were submitted to On-Bead PNGase digestion (0.5 µl, Fast PNGase F, New England Biolabs) in a final volume of 15 µl of PNGase F denaturing and reducing buffer for 10 min at 50 °C on a thermomixer (Eppendorf). Supernatants were then collected and diluted to a 50 µl final volume with 50 mM (NH₄)₂CO₃

Worthington's TLCK (tosyl-L-lysyl-chloromethane hydrochloride)-treated chymotrypsin (125 ng) was used to digest the eluted deglycosylated N-terminal peptides in solution at 37 °C for 45 min. Resulting products were analyzed by nano liquid chromatography hyphenated to a Q-Exactive Plus MS (Thermo) operating in data-dependent scheme with an inclusion list containing 12m/z for peptides of interest. Briefly, peptides loaded on the chromatography were trapped and washed with 0.1% trifluoroacetic acid and 2% acetonitrile (ACN) in milliQH₂O on a C₁₈ reverse-phase pre-column (Acclaim Pepmap 100 Å pores, 5 µm particles, 2 cm long, 75 µm inner diameter) for 3 min at 5 µl/min. Trapped peptides were then separated on a C₁₈ reverse-phase analytical column (2 µm particle size, 100 Å pore size, 75 µm inner diameter, 25 cm length) with a 1.5 h gradient starting from 99% of solvent A containing 0.1% formic acid in milliQH₂O and ending in 40% of solvent B containing 80% ACN and 0.085% formic acid in milliQH₂O. The MS acquired data throughout the elution process. The MS scans spanned from 400 to 2000 Th with AGC target 1×10^6 with 100 ms Maximum Ion Injection Time (MIIT) and resolution of 70,000. Higher energy collisional dissociation (HCD) fragmentations were performed on the 10 most abundant ions with a dynamic exclusion time of 30 s. Precursor selection window was set at 4 Th. HCD normalized collision energy was set at 30% and MS/MS scan resolution was set at 17,500 with AGC target 1×10^5 within 100 ms MIIT. Spectra were recorded in profile mode. MS data were analyzed using Mascot 2.5.1 (www.matrixscience.com). The database used was a concatenation of human sequences from the Uniprot-Swissprot database (release 2019-02, 20492 sequences) and a customized database of 70 modified sequences including the four ADRB2-mutated HA-tagged sequences (WT, N6A, +11, and N15A), and a list of in-house and common contaminant sequences (292 sequences). Cysteine carbamidomethylation was set as constant modification; asparagine deamidation was set as variable modification to allow detection of peptide modified by PNGase F enzymatic deglycosylation.

Sialic acid detection assay. NANA quantification on immunoprecipitated wt and mutant β_2 AR N-termini after trypsin digestion was performed using the NANA Colorimetric/Fluorometric Assay Kit (Bio Vision Incorporated, Catalog #K566-100). Free NANA was released from the HA-bead immunoprecipitated material by heating the sample with 2 M acetic acid at 80 °C for 3 h, followed by the addition of 2 M NaOH to neutralize the solution. The standard curve and the concentration of the NANA for the different samples were determined according to the manufacturer's protocol. To normalize the results according to the actual amount of fragments immunoprecipitated with HA beads, 10% of the beads were set aside and eluted with 2× loading dye, and analyzed by western blot. The specific anti-HA-labeled material was quantified using Image Studio Lite (LI-COR).

Reporting summary. Further information on research design is available in the Nature Research Reporting Summary linked to this article.

Data availability

Data supporting the findings of this manuscript are available from the corresponding authors upon reasonable request. A reporting summary for this article is available as a Supplementary Information file.

The source data underlying Figs. 1b–d, 2a, b, 3a, c, 3e, 5a, b, 6a, b, 7a and Supplementary Figs. 1a–d, 4c, 5b, 6b, 9 are provided as a Source Data file.

The MS proteomics data have been deposited to the ProteomeXchange Consortium via the PRIDE partner repository with the dataset identifier PXD015389.

Received: 25 October 2018; Accepted: 21 September 2019;

Published online: 18 October 2019

References

- Coureuil, M., Bourdoulous, S., Marullo, S. & Nassif, X. Invasive meningococcal disease: a disease of the endothelial cells. *Trends Mol. Med.* **20**, 571–578 (2014).
- Stephens, D. S., Greenwood, B. & Brandtzaeg, P. Epidemic meningitis, meningococcaemia, and *Neisseria meningitidis*. *Lancet* **369**, 2196–2210 (2007).
- Lemichez, E., Lecuit, M., Nassif, X. & Bourdoulous, S. Breaking the wall: targeting of the endothelium by pathogenic bacteria. *Nat. Rev. Microbiol.* **8**, 93–104 (2010).
- Virji, M. Pathogenic neisseriae: surface modulation, pathogenesis and infection control. *Nat. Rev. Microbiol.* **7**, 274–286 (2009).
- Join-Lambert, O. et al. Meningococcal interaction to microvasculature triggers the tissular lesions of purpura fulminans. *J. Infect. Dis.* **208**, 1590–1597 (2013).
- Craig, L. & Li, J. Type IV pili: paradoxes in form and function. *Curr. Opin. Struct. Biol.* **18**, 267–277 (2008).
- Kolappan, S. et al. Structure of the *Neisseria meningitidis* Type IV pilus. *Nat. Commun.* **7**, 13015 (2016).
- Coureuil, M. et al. Meningococcal type IV pili recruit the polarity complex to cross the brain endothelium. *Science* **325**, 83–87 (2009).
- Coureuil, M. et al. Meningococcus hijack a β_2 -adrenoceptor- β -arrestin pathway to cross brain microvasculature endothelium. *Cell* **143**, 1149–1160 (2010).
- Mikaty, G. et al. Extracellular bacterial pathogen induces host cell surface reorganization to resist shear stress. *PLoS Pathog.* **5**, e1000314 (2009).
- Maïssa, N. et al. Strength of *Neisseria meningitidis* binding to endothelial cells requires highly-ordered CD147/ β_2 -adrenoceptor clusters assembled by alpha-actinin-4. *Nat. Commun.* **8**, 15764 (2017).
- Bernard, S. C. et al. Pathogenic *Neisseria meningitidis* utilizes CD147 for vascular colonization. *Nat. Med.* **20**, 725–731 (2014).
- Ring, A. M. et al. Adrenaline-activated structure of beta2-adrenoceptor stabilized by an engineered nanobody. *Nature* **502**, 575–579 (2013).
- Peterson, Y. K. & Luttrell, L. M. The diverse roles of arrestin scaffolds in G protein-coupled receptor signaling. *Pharm. Rev.* **69**, 256–297 (2017).
- Mairey, E. et al. Cerebral microcirculation shear stress levels determine *Neisseria meningitidis* attachment sites along the blood–brain barrier. *J. Exp. Med.* **203**, 1939–1950 (2006).
- Merz, A. J., So, M. & Sheetz, M. P. Pilus retraction powers bacterial twitching motility. *Nature* **407**, 98–102 (2000).
- Biais, N., Ladoux, B., Higashi, D., So, M. & Sheetz, M. Cooperative retraction of bundled type IV pili enables nanonewton force generation. *PLoS Biol.* **6**, e87 (2008).
- Opitz, D. & Maier, B. Rapid cytoskeletal response of epithelial cells to force generation by type IV pili. *PLoS ONE* **6**, e17088 (2011).
- Bonazzi, D. et al. Intermittent pili-mediated forces fluidize *Neisseria meningitidis* aggregates promoting vascular colonization. *Cell* **174**, 143–155 e116 (2018).
- Perkins-Balding, D., Ratliff-Griffin, M. & Stojiljkovic, I. Iron transport systems in *Neisseria meningitidis*. *Microbiol. Mol. Biol. Rev.* **68**, 154–171 (2004).
- Granoff, D. M., Welsch, J. A. & Ram, S. Binding of complement factor H (fh) to *Neisseria meningitidis* is specific for human fh and inhibits complement activation by rat and rabbit sera. *Infect. Immun.* **77**, 764–769 (2009).
- Rands, E. et al. Mutational analysis of beta-adrenergic receptor glycosylation. *J. Biol. Chem.* **265**, 10759–10764 (1990).
- Mayer, D. C., Kaneko, O., Hudson-Taylor, D. E., Reid, M. E. & Miller, L. H. Characterization of a *Plasmodium falciparum* erythrocyte binding protein paralogous to EBA-175. *Proc. Natl. Acad. Sci. USA* **98**, 5222–5227 (2001).
- Geisler, C. & Jarvis, D. L. Effective glycoanalysis with *Maackia amurensis* lectins requires a clear understanding of their binding specificities. *Glycobiology* **21**, 988–993 (2011).
- Monsigny, M., Roche, A. C., Sene, C., Maget-Dana, R. & Delmotte, F. Sugar–lectin interactions: how does wheat-germ agglutinin bind sialoglycoconjugates? *Eur. J. Biochem.* **104**, 147–153 (1980).
- Varki, A. Loss of N-glycolylneuraminic acid in humans: mechanisms, consequences, and implications for hominid evolution. *Am. J. Phys. Anthropol.* **33**(Suppl.), 54–69 (2001).
- Varki, A. Glycan-based interactions involving vertebrate sialic-acid-recognizing proteins. *Nature* **446**, 1023–1029 (2007).
- Kawano, T. et al. Molecular cloning of cytidine monophospho-N-acetylneuraminic acid hydroxylase. Regulation of species- and tissue-specific expression of N-glycolylneuraminic acid. *J. Biol. Chem.* **270**, 16458–16463 (1995).
- Maget-Dana, R. et al. Specificities of limulin and wheat-germ agglutinin towards some derivatives of GM3 gangliosides. *Eur. J. Biochem.* **114**, 11–16 (1981).
- Pujol, C., Eugene, E., Marceau, M. & Nassif, X. The meningococcal PilT protein is required for induction of intimate attachment to epithelial cells following pilus-mediated adhesion. *Proc. Natl. Acad. Sci. USA* **96**, 4017–4022 (1999).
- Varki, A. Biological roles of glycans. *Glycobiology* **27**, 3–49 (2017).
- Yoon, S. J., Nakayama, K., Hikita, T., Handa, K. & Hakomori, S. I. Epidermal growth factor receptor tyrosine kinase is modulated by GM3 interaction with N-linked GlcNAc termini of the receptor. *Proc. Natl. Acad. Sci. USA* **103**, 18987–18991 (2006).
- Luca, V. C. et al. Structural basis for Notch1 engagement of Δ like 4. *Science* **347**, 847–853 (2015).
- Miller, F. et al. The hypervariable region of meningococcal major pilin PilE controls the host cell response via antigenic variation. *MBio* **5**, e01024–01013 (2014).
- Wacker, D., Stevens, R. C. & Roth, B. L. How ligands illuminate GPCR molecular pharmacology. *Cell* **170**, 414–427 (2017).
- Liu, X. et al. Mechanism of intracellular allosteric β_2 AR antagonist revealed by X-ray crystal structure. *Nature* **548**, 480–484 (2017).
- Kruse, A. C. et al. Activation and allosteric modulation of a muscarinic acetylcholine receptor. *Nature* **504**, 101–106 (2013).

38. Masureel, M. et al. Structural insights into binding specificity, efficacy and bias of a β_2 AR partial agonist. *Nat. Chem. Biol.* **14**, 1059–1066 (2018).
39. Zhang, Y. et al. Cryo-EM structure of the activated GLP-1 receptor in complex with a G protein. *Nature* **546**, 248–253 (2017).
40. Chachisvilis, M., Zhang, Y. L. & Frangos, J. A. G protein-coupled receptors sense fluid shear stress in endothelial cells. *Proc. Natl. Acad. Sci. USA* **103**, 15463–15468 (2006).
41. Tang, W., Strachan, R. T., Lefkowitz, R. J. & Rockman, H. A. Allosteric modulation of beta-arrestin-biased angiotensin II type 1 receptor signaling by membrane stretch. *J. Biol. Chem.* **289**, 28271–28283 (2014).
42. Zou, Y. et al. Mechanical stress activates angiotensin II type 1 receptor without the involvement of angiotensin II. *Nat. Cell Biol.* **6**, 499–506 (2004).
43. Mederos y Schnitzler, M. et al. Gq-coupled receptors as mechanosensors mediating myogenic vasoconstriction. *EMBO J.* **27**, 3092–3103 (2008).
44. Rakesh, K. et al. Beta-arrestin-biased agonism of the angiotensin receptor induced by mechanical stress. *Sci. Signal.* **3**, ra46 (2010).
45. Okerblom, J. & Varki, A. Biochemical, cellular, physiological, and pathological consequences of human loss of N-glycolylneuraminic acid. *Chembiochem* **18**, 1155–1171 (2017).
46. Martin, M. J., Rayner, J. C., Gagneux, P., Barnwell, J. W. & Varki, A. Evolution of human–chimpanzee differences in malaria susceptibility: relationship to human genetic loss of N-glycolylneuraminic acid. *Proc. Natl. Acad. Sci. USA* **102**, 12819–12824 (2005).
47. Deng, L. et al. Host adaptation of a bacterial toxin from the human pathogen *Salmonella typhi*. *Cell* **159**, 1290–1299 (2014).
48. Weksler, B. B. et al. Blood-brain barrier-specific properties of a human adult brain endothelial cell line. *FASEB J.* **19**, 1872–1874 (2005).
49. Nassif, X. et al. Antigenic variation of pilin regulates adhesion of *Neisseria meningitidis* to human epithelial cells. *Mol. Microbiol.* **8**, 719–725 (1993).
50. Marceau, M., Beretti, J. L. & Nassif, X. High adhesiveness of encapsulated *Neisseria meningitidis* to epithelial cells is associated with the formation of bundles of pili. *Mol. Microbiol.* **17**, 855–863 (1995).
51. Helaine, S., Dyer, D. H., Nassif, X., Pelicic, V. & Forest, K. T. 3D structure/function analysis of PilX reveals how minor pilins can modulate the virulence properties of type IV pili. *Proc. Natl. Acad. Sci. USA* **104**, 15888–15893 (2007).
52. Scott, M. G., Benmerah, A., Muntaner, O. & Marullo, S. Recruitment of activated G protein-coupled receptors to pre-existing clathrin-coated pits in living cells. *J. Biol. Chem.* **277**, 3552–3559 (2002).
53. Storez, H. et al. Homo- and hetero-oligomerization of beta-arrestins in living cells. *J. Biol. Chem.* **280**, 40210–40215 (2005).
54. Angers, S. et al. Detection of beta 2-adrenergic receptor dimerization in living cells using bioluminescence resonance energy transfer (BRET). *Proc. Natl. Acad. Sci. USA* **97**, 3684–3689 (2000).
55. Scott, M. G. H. et al. Cooperative regulation of ERK activation and cell shape change by filamin A and β -arrestins. *Mol. Cell. Biol.* **26**, 3432–3445 (2006).
56. Virji, M., Watt, S. M., Barker, S., Makepeace, K. & Doyonnas, R. The N-domain of the human CD66a adhesion molecule is a target for Opa proteins of *Neisseria meningitidis* and *Neisseria gonorrhoeae*. *Mol. Microbiol.* **22**, 929–939 (1996).
57. Maurel, D. et al. Cell surface detection of membrane protein interaction with homogeneous time-resolved fluorescence resonance energy transfer technology. *Anal. Biochem.* **329**, 253–262 (2004).
58. Sanjana, N. E., Shalem, O. & Zhang, F. Improved vectors and genome-wide libraries for CRISPR screening. *Nat. Methods* **11**, 783–784 (2014).
59. Hebert, T. E. et al. A peptide derived from a beta2-adrenergic receptor transmembrane domain inhibits both receptor dimerization and activation. *J. Biol. Chem.* **271**, 16384–16392 (1996).
60. Lambotin, M. et al. Invasion of endothelial cells by *Neisseria meningitidis* requires cortactin recruitment by a phosphoinositide-3-kinase/Rac1 signalling pathway triggered by the lipo-oligosaccharide. *J. Cell Sci.* **118**, 3805–3816 (2005).
61. Roepstorff, P. & Fohlman, J. Proposal for a common nomenclature for sequence ions in mass spectra of peptides. *Biomed. Mass Spectrom.* **11**, 601 (1984).
62. Michalski, A., Neuhauser, N., Cox, J. & Mann, M. A systematic investigation into the nature of tryptic HCD spectra. *J. Proteome Res.* **11**, 5479–5491 (2012).
63. Brei, L. A., Tabb, D. L., Yates, J. R. & Wysocki, V. H. Cleavage N-terminal to proline: analysis of a database of peptide tandem mass spectra. *Anal. Chem.* **75**, 1963–1971 (2003).

Acknowledgements

We thank N. Goudin of the Necker Institute Imaging Facility, S. Fabrega, L. Nay, and S. Hadj Hamou of the Viral Vectors and Genes Transfer facility (VVTG) for their technical support. This work was supported by ANR-14-IFEC-0006-01, ANR-15-CE15-0002, and ANR MECAD-R 2019 grants. S.M. and X.N. are supported by INSERM, CNRS, Université Paris Descartes, and the Fondation pour la Recherche Médicale.

Author contributions

M.C., S.D., and S.M. designed the experiments. S.M. and M.C. wrote the manuscript. S.D. performed HTRF, S.M. molecular biology experiments, M.C. and Z.V. cell biology experiments, M.L., C.B., and M.C. mechano-transduction assays, M.C. K.S., and R.M.D. performed glycan analysis, and K.S. and F.G. performed proteomic analysis. X.N., P.M.R., and C.R.-M. discussed data and hypotheses and reviewed the manuscript.

Competing interests

The authors declare no competing interests.

Additional information

Supplementary information is available for this paper at <https://doi.org/10.1038/s41467-019-12685-6>.

Correspondence and requests for materials should be addressed to M.C. or S.M.

Peer review information *Nature Communications* thanks Isabella Maiello and the other, anonymous, reviewer(s) for their contribution to the peer review of this work. Peer reviewer reports are available.

Reprints and permission information is available at <http://www.nature.com/reprints>

Publisher's note Springer Nature remains neutral with regard to jurisdictional claims in published maps and institutional affiliations.



Open Access This article is licensed under a Creative Commons Attribution 4.0 International License, which permits use, sharing, adaptation, distribution and reproduction in any medium or format, as long as you give appropriate credit to the original author(s) and the source, provide a link to the Creative Commons license, and indicate if changes were made. The images or other third party material in this article are included in the article's Creative Commons license, unless indicated otherwise in a credit line to the material. If material is not included in the article's Creative Commons license and your intended use is not permitted by statutory regulation or exceeds the permitted use, you will need to obtain permission directly from the copyright holder. To view a copy of this license, visit <http://creativecommons.org/licenses/by/4.0/>.

© The Author(s) 2019