



Melting and metallization of silica in the cores of gas giants, ice giants, and super Earths

S. Mazevet, T. Tsuchiya, T. Taniuchi, A. Benuzzi-Mounaix, F. Guyot

► To cite this version:

S. Mazevet, T. Tsuchiya, T. Taniuchi, A. Benuzzi-Mounaix, F. Guyot. Melting and metallization of silica in the cores of gas giants, ice giants, and super Earths. *Physical Review B: Condensed Matter and Materials Physics* (1998-2015), 2015, 92 (1), 10.1103/PhysRevB.92.014105 . hal-02483133

HAL Id: hal-02483133

<https://hal.science/hal-02483133>

Submitted on 12 May 2022

HAL is a multi-disciplinary open access archive for the deposit and dissemination of scientific research documents, whether they are published or not. The documents may come from teaching and research institutions in France or abroad, or from public or private research centers.

L'archive ouverte pluridisciplinaire **HAL**, est destinée au dépôt et à la diffusion de documents scientifiques de niveau recherche, publiés ou non, émanant des établissements d'enseignement et de recherche français ou étrangers, des laboratoires publics ou privés.

Melting and metallization of silica in the cores of gas giants, ice giants, and super Earths

S. Mazevet,^{1,2} T. Tsuchiya,³ T. Taniuchi,³ A. Benuzzi-Mounaix,^{4,5} and F. Guyot⁶

¹*LUTH, Observatoire de Paris, PSL Research University, CNRS, Université Paris Diderot,
5 place Jules Janssen, 92190 Meudon Cedex, France*

²*CEA, DAM, DIF, F91297 Arpajon, France*

³*Geodynamics Research Center, Ehime University, 2-5 Bunkyo-cho, Matsuyama, Ehime 790-8577, Japan*

⁴*LULI, Ecole Polytechnique, CNRS, CEA, UPMC, route de Saclay, 91128 Palaiseau, France*

⁵*LUTH, UMR8102, Observatoire de Paris, CNRS, Université Paris Diderot, 5 place Jules Janssen, 92190 Meudon Cedex, France*

⁶*IMPMC, Muséum National d'Histoire Naturelle, UMR CNRS 75-90, Sorbonne Université Paris, France*

(Received 15 March 2014; revised manuscript received 24 May 2015; published 8 July 2015)

The physical state and properties of silicates at conditions encountered in the cores of gas giants, ice giants, and of Earth-like exoplanets now discovered with masses up to several times the mass of the Earth remain mostly unknown. Here, we report on theoretical predictions of the properties of silica, SiO_2 , up to 4 TPa and about 20 000 K by using first principles molecular dynamics simulations based on density functional theory. For conditions found in the super Earths and in ice giants, we show that silica remains a poor electrical conductor up to 10 Mbar due to an increase in the Si-O coordination with pressure. For Jupiter and Saturn cores, we find that MgSiO_3 silicate has not only dissociated into MgO and SiO_2 , as shown in previous studies, but that these two phases have likely differentiated to lead to a core made of liquid SiO_2 and solid (Mg,Fe)O.

DOI: [10.1103/PhysRevB.92.014105](https://doi.org/10.1103/PhysRevB.92.014105)

PACS number(s): 91.45.Bg, 51.30.+i, 51.70.+f, 71.22.+i

I. INTRODUCTION

Little is known of the properties of silicates at pressures greater than those encountered in the Earth's mantle [1]. Beyond 100 GPa, and up to the conditions encountered in Jupiter's interior (4–7 TPa), our current understanding is limited to extrapolations of equations of state of the solid phases only valid at moderately low temperatures (several thousands of kelvins) [2]. On the experimental side, the high-pressure (up to 1 TPa) and high-temperature (up to 50 000 K) domain has been investigated along the principal Hugoniot by using dynamical experiments [3–5]. Dynamical compression techniques based on quasi-isentropic paths to reduce heating are in progress, but experimental data for super-Earth and Jupiter conditions will remain sparse in the near future. For years to come, the modeling of planetary interiors will mostly rely on calculations, such as first principles simulations and, in the optimum case, verified in the restricted-pressure domain that is experimentally accessible. In the meantime, the discovery of extrasolar planets several times the mass of the Earth, such as CoRo 7b (3 Earth mass) [6,7], or the modeling of the interior structure and evolution of Jupiter, Saturn, Uranus, and Neptune in our solar system all require the elucidation of the phase diagram of silicates well beyond a few Mbar [1].

According to accepted planetary-formation scenarios [8], silicates are, together with water and iron, the main ingredients of the protoplanet embryos. They can grow up to several times the size of the Earth and then accrete hydrogen and helium up to several times the mass of Jupiter or Saturn. The properties of silicates throughout this trajectory in pressure and temperature space need to be better constrained. If they turn liquid, it potentially impacts dissipation and tidal effects that are keys to understand the stability of planetary systems, the erosion of the core of giant planets, or even their luminosity if differentiation leads to a significant release of heat. If they turn metallic under pressure, silicates can significantly contribute to the generation

of magnetic fields or play a major role in dissipation effects in terrestrial exoplanets.

In contrast with the iron and water phase diagrams that are better constrained in this regime [9–12], the complex behavior of silicates in density and temperature is currently a challenge for first principles simulations based on density functional theory (DFT). Complex silicates constituting planetary interiors such as $(\text{Mg,Fe})\text{SiO}_3$ and $(\text{Mg,Fe})_2\text{SiO}_4$ cannot be directly simulated due to the large numbers of particles needed. A first approach to the stability and complex chemistry occurring at pressures and temperatures relevant to planetary interiors can be inferred by studying the properties of compounds such as MgSiO_3 , a major silicate endmember in the deep-Earth interior and its dissociation products MgO and SiO_2 [2].

By using lattice dynamics, Umemoto *et al.* [2] established the stability of MgSiO_3 (Fig. 1) up to pressures representative of Jupiter's interior. Within the quasiharmonic approximation, they showed that CaIrO₃-type MgSiO_3 , the silicate stable at the terrestrial core-mantle boundary, cannot exist beyond 1 TPa and probably melts at temperatures varying between 5000 and 10 000 K in this pressure range. As shown in Fig. 1, this implies that MgSiO_3 may remain stable at conditions encountered in Uranus and Neptune but that it would dissociate into MgO and SiO_2 in Saturn and Jupiter. Because the quasiharmonic approximation tends to overestimate the melting temperature, whether MgSiO_3 is in a liquid or a solid state at conditions found in the cores of Uranus and Neptune remains an open question. Its answer necessitates going beyond the quasiharmonic approximation by including anharmonic effects with molecular dynamics. As a first step toward a full *ab initio* phase diagram of silicates in the pressure-temperature range relevant to planetary modeling, we calculated the physical properties of silica, SiO_2 , by using DFT-based molecular dynamics simulations (DFT-MD) for the high-pressure melting curve and linear response theory for the electrical properties.

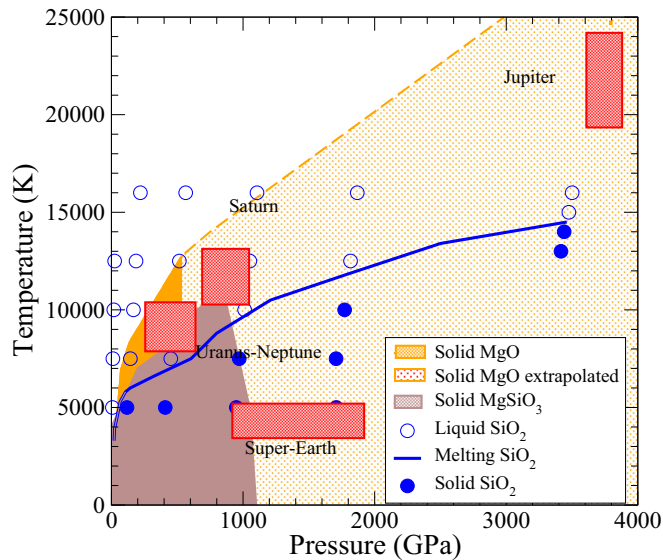


FIG. 1. (Color online) Phase diagram of MgSiO_3 , SiO_2 , and MgO . (Orange) Stability of MgSiO_3 in pressure and temperature. (Brown) Solid MgO . (Blue) SiO_2 high-pressure melting curve. Solid blue dots show calculated solid SiO_2 , and open blue dots show calculated liquid SiO_2 .

II. HIGH-PRESSURE MELTING TEMPERATURE

For the high-pressure melting curve, we performed two-phase molecular dynamics simulations up to 4 TPa because this pressure range is representative of Jupiter's interior. We used specifically designed pseudopotentials with $2s$ and $2p$ shells included as valence states to reach the highest pressures investigated here. This suite of pseudopotentials were verified against all-electron calculations for the relevant range of pressure [13]. Our two-phase MD simulations were performed by using the PWSCF code [14] for electronic structure with an original implementation of the temperature constant MD solver, where the temperature T was controlled to keep constant values by the kinetic-energy scaling method [15].

Two phases, both with the melt and crystalline structures, were placed in a computational box. Here, both phases contained 24 SiO_2 units (72 atoms), and the computational box contained 48 atoms (144 atoms) total. The simulation procedure was as follows: the crystalline structure at each pressure was first equilibrated at 2000 K for a period of 1 ps (10^{-12} s). The liquid phase at each pressure was obtained by equilibrating at 20 000 K for a period of 1 ps. The solid and liquid structures were put together with a small spacing in a simulation box, letting the lower part of the box be solid while keeping the upper part liquid. We thermalized the liquid cells for 50 time steps at target temperatures before starting two-phase simulations. In our simulations, the solid and liquid cells were connected at the (001) plane of the solid. Starting from these configurations, the MD simulations evolve into a single phase. For temperatures above the melting temperature T_m , the cell will turn liquid, whereas the cell will solidify in a vitreous state at temperatures below T_m . The simulations were typically performed for 10 000 time steps (10 ps). T_m at pressures below 160 GPa were obtained from Ref. [15].

In the SiO_2 compound, several phases have been identified as stable at ultrahigh-pressures including an hexagonal Fe_2P -type structure at 1 TPa, beyond a cotunnite-type phase [12]. These solid phases were used in two-phase simulations to calculate the melting temperature. This led to different slopes in the melting curve and to the discontinuities observable in Fig. 1. From 0.1 TPa and up to 1 TPa, Fig. 1 shows that the melting temperature increases up to 10 000 K. This region corresponds to conditions anticipated at the cores of Uranus, Neptune, and Saturn [1].

Figure 1 also shows that, for these three planets, a core constituted of pure silica would be molten in the core because the pressure and temperature conditions anticipated lay above the calculated high-pressure melting curve. The situation is somewhat tempered in the cases of Uranus and Neptune because the quasiharmonic approximation estimates that CaIrO_3 -type MgSiO_3 remains stable at these conditions [2]. Because anharmonic effects may lead to a lower melting temperature and a smaller MgSiO_3 stability domain of solid phases in pressure and temperature, the calculations shown here suggest that the cores of Uranus- and Neptune-type planets would also be constituted of a significant fraction of melted silica if MgSiO_3 is shown to be dissociated at these conditions.

The situation for Jupiter and Saturn's cores is clearer. Figure 1 shows that silica is molten at these conditions. In this pressure-temperature range, CaIrO_3 -type MgSiO_3 is not stable and is predicted to dissociate into MgO and SiO_2 within the quasiharmonic approximation. We also note that DFT-MD simulations [16] show that the MgO melting temperature increases with pressure much faster than either those of MgSiO_3 or SiO_2 up to 0.5 TPa. An extrapolation of the MgO high-pressure melting curve up to the conditions of Saturn's core (1 TPa) suggests that it remains solid and probably in the B2 phase. This indicates that, during its evolution, Saturn's silicates are probably dissociated into two components, solid MgO and liquid SiO_2 . Considering the rather close densities of these two constituents at a pressure of 0.5 TPa (7 g/cm^3 and 7.2 g/cm^3 , respectively) and without direct calculations of the MgO properties at 1 TPa, the calculations shown here indicate that Saturn's silicates could turn in either a MgO shell surrounding a silicate liquid core or conversely a MgO core surrounded by a layer of liquid silica. The presence of iron, likely preferentially dissolved in MgO , would increase the density of this latter phase and favor a core made of a central $(\text{Mg,Fe})\text{O}$ surrounded by molten SiO_2 . These considerations also apply to Jupiter's core. We note, however, that a wide disparity between models exists at the moment regarding the conditions at Jupiter's core, with predictions for temperatures at the envelope-core boundary ranging from 15 000 to 20 000 K [1].

III. ELECTRICAL PROPERTIES

Figure 1 also shows that silica remains in a solid state in Earth like exoplanets up to several times the Earth mass. Whether silica turns metallic at these conditions is a second important issue, which we investigated by using linear response theory. To obtain the transport properties, we performed a set of simulations starting from the quartz alpha phase with 108

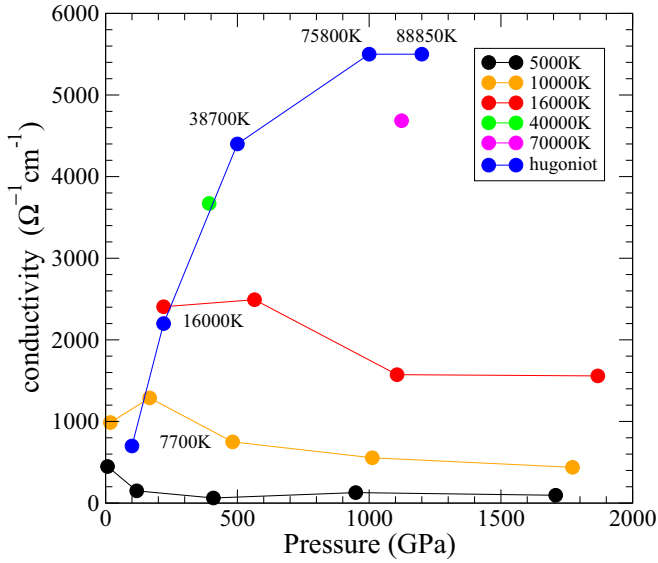


FIG. 2. (Color online) Electrical conductivity as a function of pressure along various isotherms and at conditions relevant to planetary modeling. Solid lines are to guide the eyes.

atoms in the simulation cell. We used the isokinetic ensemble and performed the calculations with the ABINIT electronic structure code [17]. We checked that the simulation relaxes into the proper phase at a given pressure-temperature condition by calculating the Si-O coordination number. From equilibrated trajectories, we performed Kubo–Greenwood calculations on several snapshots to obtain the transport properties. Within this formulation [18], the real part of the optical conductivity is obtained by using the eigenvalues and eigenfunctions obtained from the diagonalization of the Kohn–Sham Hamiltonian. We used five snapshots and a 43 k -point grid as given by the Monkhorst–Pack scheme [19] to ensure convergence of the optical conductivity in particle numbers, k points, and number of snapshots. We used 800 bands to ensure convergence of the optical conductivity in photon frequency well beyond 10 eV. The direct current (dc) conductivity plotted in Fig. 2 is obtained by taking the limit of the optical conductivity at zero frequency.

Figure 2 shows dc conductivity calculated by using supercells equilibrated along several isotherms, as indicated in Fig. 1. We find that the dc conductivity increases as temperature increases along the principal Hugoniot (i.e., the final states reached in a shock experiment starting from normal conditions) to reach a plateau at $5500 \text{ ohm}^{-1} \text{ cm}^{-1}$, concomitantly with the disappearance of Si-O bonding [20]. This is in very good agreement with shockwave experiments [3]. Surprisingly, Fig. 2 also shows that no non-metal-metal transition is observed in silica as pressures increase along an isotherm. The dc electrical conductivity actually does not increase with pressure along a given isotherm but rather decreases. This is unexpected because many insulators undergo a pressure-induced metallization at relatively low temperatures [21,22]. The origin of this effect can be traced back to the change in the Si-O coordination with pressure and the corresponding variation of the electronic structure.

It is well documented that the Si-O coordination increases from four in alpha-quartz to nine in the cotunnite and Fe₂P

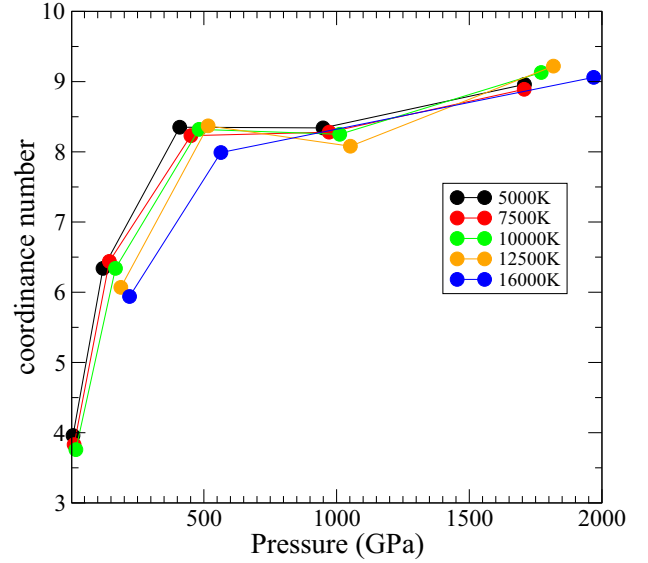


FIG. 3. (Color online) Variation of the coordination number (CON) in pressure along five isotherms.

phases [12]. Figure 3 shows the values of the coordination number (CON) obtained by integrating the Si-O correlation function up to $r_{\text{cut}} = 4.5a_B$ at the lowest densities and up to $r_{\text{cut}} = 4a_B$ at 9 g/cm^3 and 11 g/cm^3 . These cutoff values correspond to the minimum in the Si-O pair correlation function following the first peak. Figure 3 shows that the Si-O CON has a similar behavior in either the solid or the liquid at these temperatures with values corresponding to the ones obtained previously for the Fe₂P-type structure [12]. Figure 3 also shows that temperature has little effect on the Si-O CON at these conditions, although a decrease in the Si-O CON in temperature is still noticeable at each density. The increase in the Si-O CON with pressure corresponds to a drastic modification of the electronic structure.

Figure 4 shows the density of states (DOS) and occupied density of states (occupied DOS) obtained at the densities corresponding to the conductivities given in Fig. 2 and for three representative isotherms. Figure 4 shows that silica behaves as a semimetal at low density and moderate temperatures with a pseudogap clearly visible around the Fermi energy. Along an isotherm, the increase in CON corresponds to the opening of a pseudogap and a decrease in the density of states around the Fermi energy. The latter is clearly visible in the occupied DOS. Conversely, comparing the DOS and occupied DOS between isotherms at a given density shows that temperature has the opposite effect on the electronic structure. This suggests that pressure along an isotherm tends to increase the localization of the electron on each atom of the Si-O bond, i.e., implicitly increasing its ionic character. It also shows that the effect of temperature is more involved than a simple temperature-activated process across a gap fixed at a given density. As temperature decreases, the Si-O CON increases at a given density, the DOS and occupied DOS are modified accordingly and lead to smaller conductivities, as shown in Fig. 2.

This behavior of silica leads to a significant correction of previous estimates of the electrical conductivity by an order of magnitude [2]. We find that the dc electrical conductivity

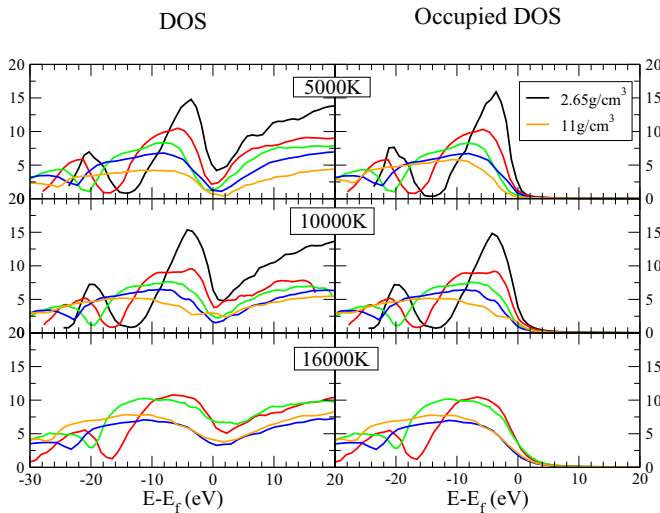


FIG. 4. (Color online) Variation of the density of states (DOS) and occupied density of states in temperature and pressure. Each row corresponds to an isotherm as indicated in the figure. The densities are (black) 2.65 g/cm³, (red) 5 g/cm³, (green) 7 g/cm³, (blue) 9 g/cm³, and (orange) 11 g/cm³.

at conditions relevant to the deepest mantles of super Earths is of the order of 200 to 300 ohm⁻¹ cm⁻¹. Contrary to previous speculations, this suggests that silica will not contribute

significantly to either magnetic-field generation in Earth-like exoplanets up to several times the Earth mass. The dc electrical conductivity of silica starts to be comparable to the one of a poor metal (greater than 1000 ohm⁻¹ cm⁻¹) above 7000 to 8000 K.

IV. CONCLUSION

We established here new equation of state data for silica needed to build self-consistent planetary models of ice giants, gas giants, and terrestrial exoplanets. Contrary to previous estimates, we find that silica remains a poor metal at extreme pressures with little contribution to transport properties and magnetic field in terrestrial exoplanets. The molten state of SiO₂ at conditions deep in Jupiter and Saturn, and possibly in Uranus and Neptune, suggests that structure and evolution models of such bodies may need to account for a liquid state in their cores. This is also the case for standard tidal models that consider dissipation as mostly occurring in a solid core made of silicates, water, and iron [23].

ACKNOWLEDGMENTS

This work is supported in part by the French Agence Nationale de la Recherche under contract PLANETLAB ANR-12-BS04-0015.

-
- [1] I. Baraffe, G. Chabrier, and T. Barman, *Rep. Prog. Phys.* **73**, 016901 (2010).
 - [2] K. Umemoto, R. M. Wentzcovitch, and P. Allen, *Science* **311**, 983 (2006).
 - [3] D. G. Hicks, T. R. Boehly, J. H. Eggert, J. E. Miller, P. M. Cellier, and G. W. Collins, *Phys. Rev. Lett.* **97**, 025502 (2006).
 - [4] M. D. Knudson and M. P. Desjarlais, *Phys. Rev. Lett.* **103**, 225501 (2009).
 - [5] D. K. Spaulding, R. S. McWilliams, R. Jeanloz, J. H. Eggert, P. M. Celliers, D. G. Hicks, G. W. Collins, and R. F. Smith, *Phys. Rev. Lett.* **108**, 065701 (2012).
 - [6] E. J. Rivera, J. J. Lissauer, R. P. Butler, G. W. Marcy, S. S. Vogt, D. A. Fischer, T. M. Brown, G. H. Laughlin, and G. W. Henry, *Astrophys. J.* **634**, 625 (2005).
 - [7] D. Queloz, F. Bouchy, C. Moutou, A. Hatzes, G. D. Hbrard *et al.*, *Astron. Astrophys.* **506**, 303 (2009).
 - [8] T. Guillot, *Science* **286**, 72 (1999).
 - [9] J. Bouchet, S. Mazevet, G. Morard, F. Guyot, and R. Musella, *Phys. Rev. B* **87**, 094102 (2013).
 - [10] R. Redmer *et al.*, *Icarus* **211**, 798 (2011).
 - [11] L. Stixrude, *Phys. Rev. Lett.* **108**, 055505 (2012).
 - [12] T. Tsuchiya and J. Tsuchiya, *Proc. Natl. Acad. Sci. USA* **108**, 1252 (2011).
 - [13] F. Jollet, M. Torrent, and N. Holzwarth, *Comput. Phys. Commun.* **185**, 1246 (2014).
 - [14] P. Giannozzi, S. Baroni, N. Bonini, M. Calandra, R. Car *et al.*, *J. Phys.: Condens. Matter* **21**, 395502 (2009).
 - [15] Y. Usui and T. Tsuchiya, *J. Earth Sci.* **21**, 801 (2010).
 - [16] A. B. Belonoshko, S. Arapan, R. Martonak, and A. Rosengren, *Phys. Rev. B* **81**, 054110 (2010).
 - [17] X. Gonze, B. Amadon, P. M. Anglade, J.-M. Beuken, F. Bottin *et al.*, *Comput. Phys. Commun.* **180**, 2582 (2009).
 - [18] S. Mazevet, M. Torrent, V. Recoules, and F. Jollet, *High Energy Density Phys.* **6**, 84 (2010).
 - [19] H. J. Monkhorst and J. D. Pack, *Phys. Rev. B* **13**, 5188 (1976).
 - [20] Y. Laudernet, J. Clerouin, and S. Mazevet, *Phys. Rev. B* **70**, 165108 (2004).
 - [21] N. F. Mott, *Philos. Mag.* (1798–1977) **6**, 287 (1961).
 - [22] M. I. Eremets and I. A. Troyan, *Nat. Mater.* **10**, 927 (2011).
 - [23] F. Remus, S. Mathis, J. P. Zahn, and V. Lainey, *Astron. Astrophys.* **541**, A165 (2012).