



**HAL**  
open science

# The Tsunami Triggered by the 21 May 2003 Boumerdès-Zemmouri (Algeria) Earthquake: Field Investigations on the French Mediterranean Coast and Tsunami Modelling

A. Sahal, J. Roger, Sébastien Allgeyer, B. Lemaire, H. Hébert, F. Schindelé,  
F. Lavigne

## ► To cite this version:

A. Sahal, J. Roger, Sébastien Allgeyer, B. Lemaire, H. Hébert, et al.. The Tsunami Triggered by the 21 May 2003 Boumerdès-Zemmouri (Algeria) Earthquake: Field Investigations on the French Mediterranean Coast and Tsunami Modelling. *Natural Hazards and Earth System Sciences*, 2009, 9 (6), pp.1823–1834. 10.5194/nhess-9-1823-2009 . hal-02478065

**HAL Id: hal-02478065**

**<https://hal.science/hal-02478065v1>**

Submitted on 4 Aug 2020

**HAL** is a multi-disciplinary open access archive for the deposit and dissemination of scientific research documents, whether they are published or not. The documents may come from teaching and research institutions in France or abroad, or from public or private research centers.

L'archive ouverte pluridisciplinaire **HAL**, est destinée au dépôt et à la diffusion de documents scientifiques de niveau recherche, publiés ou non, émanant des établissements d'enseignement et de recherche français ou étrangers, des laboratoires publics ou privés.



Distributed under a Creative Commons Attribution 4.0 International License

# The tsunami triggered by the 21 May 2003 Boumerdès-Zemmouri (Algeria) earthquake: field investigations on the French Mediterranean coast and tsunami modelling

A. Sahal<sup>1</sup>, J. Roger<sup>2,3</sup>, S. Allgeyer<sup>2</sup>, B. Lemaire<sup>2</sup>, H. Hébert<sup>2</sup>, F. Schindelé<sup>2</sup>, and F. Lavigne<sup>1</sup>

<sup>1</sup>Université Paris 1 Panthéon-Sorbonne, Laboratoire de Géographie Physique, UMR 8591, 1 place Aristide Briand, 92195 Meudon Cedex, France

<sup>2</sup>CEA, DAM, DIF, Bruyères le Châtel, 91297 Arpajon Cedex, France

<sup>3</sup>Centro de Geofísica da Universidade de Lisboa, Rua Ernesto de Vasconcelos, Faculdade de Ciências Ed. C8, 6<sup>o</sup>, 1700 Lisboa, Portugal

Received: 2 April 2009 – Revised: 27 August 2009 – Accepted: 2 October 2009 – Published: 10 November 2009

**Abstract.** A field survey was organized on the French Mediterranean coasts to investigate the effects of the tsunami induced by the 21 May 2003 Boumerdès-Zemmouri (Algeria) earthquake ( $M_w=6.9$ ). The results show that eight harbours were affected by important sea level disturbances that caused material loss. Unfortunately, the low sampling rate of the French tide gage records (10 min) does not allow for a proper evaluation of the tsunami wave amplitudes since these amplitudes were probably underestimated in the harbours where these sensors are installed. The survey brings to light regional and local contrasts among the harbours' hydrological responses to the tsunami.

To better understand these contrasts, a numerical simulation of the sea level elevations induced by the tsunami was conducted. The simulation showed a certain correlation between the field results and the wave amplification along the coast; however it underestimated the observed phenomena. Another simulation was then conducted using high resolution bathymetric grids (space step of 3 m) centred more specifically on 3 neighbouring harbours, however, again the simulation results did not match the amplitudes recorded through the observations. In order to better understand the wave amplification mechanisms inside each grid, a Gaussian signal was virtually broadcasted from the source to the harbours. Virtual sensors identified the periods which are stimulated – or not – by the arrival of the signal in each grid. Comparing these periods with those previously recorded emphasizes the proper period of each waterbody.

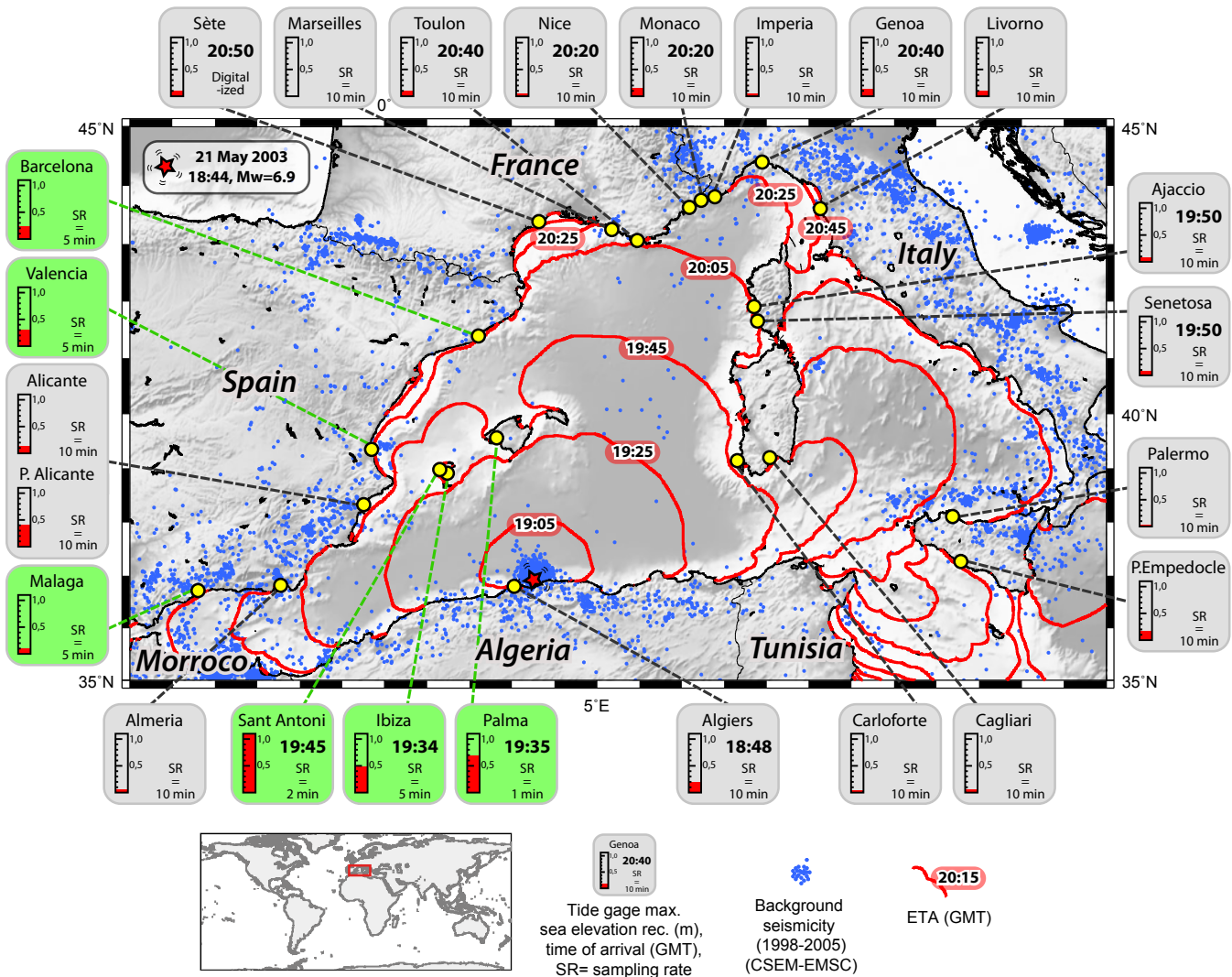
This paper evaluates the limitations of such a study, focusing specifically on (1) the importance of having accurate and precise data about the source (the lack of information about the signal amplitude leads to an underestimation of the tsunami, thus reproducing only a fourth to a third of the observed phenomenon), (2) the need for networked tide gages with high resolution records and short sampling rates, and (3) the importance of conducting field studies immediately after a tsunami occurs.

## 1 Introduction

The Western Mediterranean coasts have suffered from tsunamis in the past, and their present exposure to future tsunami hazard is undeniable. In this geographical location, three main regions are identifiable sources (seismic, as well as submarine landslide sources) for tsunamis: (1) the region of the Ligurian sea from Sanremo to Livorno (Italy) where seismic activities have triggered many devastating tsunamis, such as the earthquake-induced tsunami of 1887 (Eva and Rabinovich, 1997); (2) Sicily and the Aeolian Islands (Italy) which were the sources of numerous tsunamis triggered by eruption-induced submarine landslides (Tinti et al., 2004; Maramai et al., 2005; Gerardi et al., 2008), or triggered by earthquakes, as was the case of Catania in 1693 (Gutscher et al., 2006); and (3) the North-African margin which was a source that triggered several noticeable tsunamis, such as in 1365 and in 1856 (Roger and Hébert, 2008), as well as in 1980 when the El Asnam earthquake triggered a small tsunami that moderately impacted the Spanish shoreline (as shown by tide gauge observations) (Soloviev, 2000).



Correspondence to: A. Sahal  
(alexandre@sahal.fr)



**Fig. 1.** The 21 May 2003 tsunami in the Western Mediterranean Sea: estimated travel time and tide gage records. The background seismicity depicts the 2003 seismic crisis. The tsunami travel times (red lines) were computed using the TTT SDK v 3.2 (<http://www.geoware-online.com/>). The colour code for the tide gage stations indicates the various sampling rates for the data acquisition (see text for details).

The French Mediterranean coast was affected by some of these tsunamis, and additionally has suffered from the impact of local submarine landslides, such as in 1979, when the Nice airport embankment collapsed and triggered a tsunami affecting the Baie des Anges, and more specifically, Antibes (Assier-Rzadkiewicz et al., 2000).

More recently, on 21 May 2003 at 18:44 UTC, an earthquake of moment magnitude  $M_w=6.9$  occurred in the region of Boumerdès-Zemmouri, Algeria, generating a tsunami which reached the Western Mediterranean coasts in a time span of a few minutes to several hours (Alasset et al., 2006). Figure 1 shows the maximal sea level elevations recorded by the tide gages of the Western Mediterranean Sea.

The tide gages in operation in 2003 recorded sea level elevations ranging from a few centimetres in Sardinia (Italy)

to a meter in the Balearic Islands (Spain). The sampling rates from the tide gages vary from 1 to 10 min. Figure 1 shows that the tide gages with precise sampling rates (less than 5 min, coloured in green) were the only ones to record significant sea level variations (with the exception of Puerto Alicante). In fact, tide gages with sampling rates equal to or larger than 10 min (coloured in grey) are ineffective in recording all the amplitudes of tsunami-induced sea level oscillations because such oscillations happen to have too short main periods (between 15 and 20 min) compared to the sampling interval.

Therefore, the French and Italian tide gage records are not sufficient to evaluate the local impact of the 21 May 2003 Boumerdès-Zemmouri tsunami on the French Mediterranean coast. Consequently, a witness-based investigation along the

shoreline was required to assess the actual impact of this tsunami. In May 2007, a three month field investigation began on the French Riviera and in Corsica to assess if anyone had noticed sea level variations during the evening and the night of 21–22 May 2003, and to build an observation database.

The aim of this article is to: (1) expose the methodology and the results of this field investigation, (2) determine if the simulation can reproduce the same effects using different approaches, (3) improve the understanding of the resonance effects along a tsunami path through frequency analysis, and (4) identify what can be improved concerning data collection in the Western Mediterranean Sea, and more specifically on the French coast, to better understand and mitigate the tsunami hazard.

## 2 Building a database based on harbour observations

### 2.1 Field investigation methodology

Figure 1 shows that the tsunami triggered at 18:44 UTC in Algeria should have begun impacting the French coasts around 20:10 UTC (21:10 LT). Since the tsunami occurred at night and during the holiday off-season, the field investigation methodology had to be adapted to account for a potential lack of witnesses, as no one may have been present on the beaches. Therefore, potential witnesses would have been people living on their boats or working in the harbours at night. Consequently, the investigation concentrated mostly on harbours: a total of 135 harbours were contacted and almost all of the harbours accepted to consult their surveillance logs – if one existed – for the night of 21–22 May 2003. During three months, a widely diffused “call for witnesses” was posted in each harbour office next to the meteorological forecasts which are consulted daily by people who sail and fish offshore. The poster asked those who had noticed any hydrological phenomena during the night of 21–22 May 2003 to call a dedicated phone number.

Coast guards, semaphores, the Maritime Rescue Coordination (CROSS) and commercial harbour pilots were also contacted. They agreed to verify their logs for anomalies during the evening and night of 21–22 May 2003. Figure 2 shows the location of investigated harbours and semaphores.

It should be noted that harbours and semaphores cover most of the French seashore, and for the purpose of this study, they represent a comprehensive view of the studied terrain.

Eye-witnesses participated in a semi-directed interview. These interviews were adapted to the specific context of observation: direct observation from a wharf, from a boat alongside the quay, from a boat offshore, or from a specific location (observation tower, semaphore, for example). Details about hydrological phenomena were collected concerning unusual currents, siphons, sea-level variations and/or the

corresponding consequences (for example boats moving and making specific noises, boats touching the sea-bottom, etc.). Noticeable impacts were also noted: broken mooring lines, sunken boats, displaced two-ton moorings, etc. The chronological timeline and the physical measurements of these hydrological phenomena, as well as their impacts, were collected as precisely and as often as possible. Written information from the harbour offices’ logs was collected and studied when it described unusual phenomena.

Every local, regional and national newspaper archive was also reviewed. The review focused on the week following the earthquake.

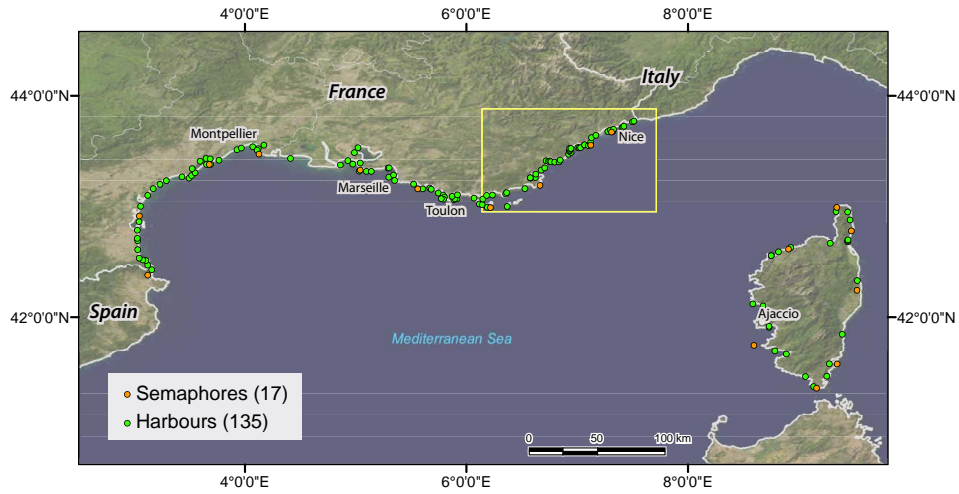
### 2.2 Results and discussion

Of the 135 harbours that were investigated, only 66 had the capacity to observe any unusual hydrological phenomenon through their nocturnal surveillance structure. Of the 66, only 8 harbours noticed hydrological anomalies which could be attributed to the 21 May 2003 earthquake-induced tsunami. The other 69 harbours did not have the nocturnal structures needed and were therefore unable to notice if anything had happened during the night. Also, the following day, they did not notice any consequences of any hydrological anomaly. This is not to say that nothing happened, rather it could mean the phenomenon did not leave any noticeable damage. Figure 3 focuses on the Eastern part of the French Riviera (yellow frame on Fig. 2), which appears to be the only affected area.

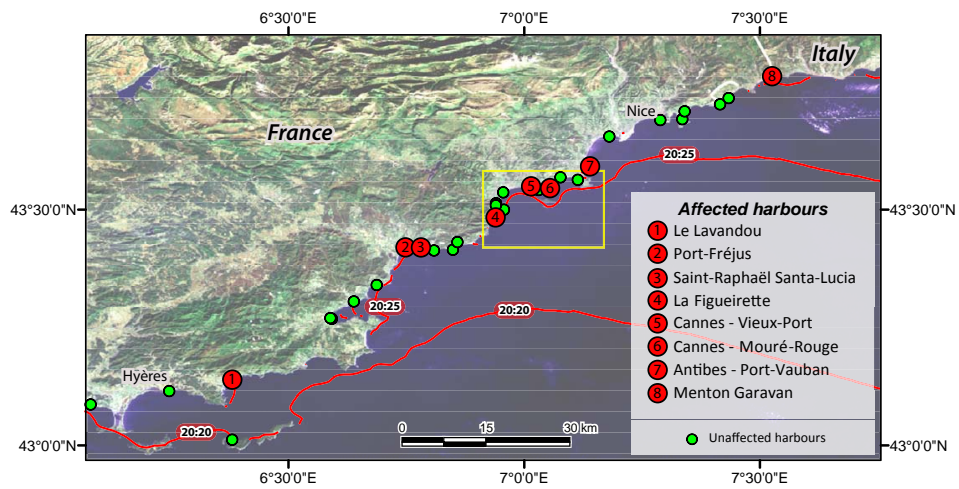
Table 1 illustrates the characteristics of each harbour, the number of direct witnesses and the corresponding phenomena. It also shows the chronological timeline of the sea level variation as reported by the witnesses.

Not all harbours were affected by the tsunami in this area. The affected harbours are quite different from each other: various sizes, azimuths of the entrance and of the coast, etc. Most of them were affected by sea elevation variations and boiling phenomena. Of the 8 affected harbours, 6 suffered material loss. La Figueirette and Mouré-Rouge harbours were the most affected: they both suffered from a high amplitude drop of the sea level (0.9 to 1.5 m and 1.5 m, respectively). At the same time, Cannes – Vieux-Port was less affected by sea-level variations. To better understand these differences at a local level, modelling was focused on this area (Fig. 4).

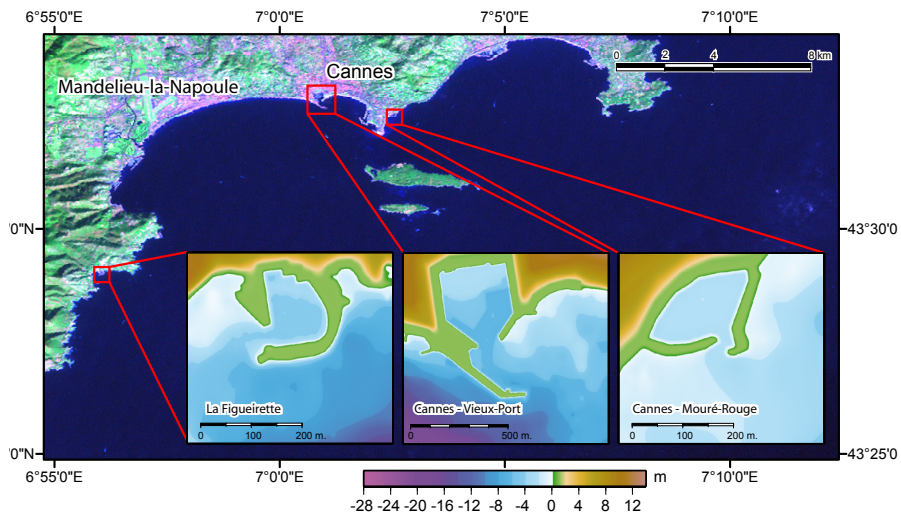
These results have practical limitations. On the one hand, it is quite difficult for witnesses to remember the precise time the event occurred, especially several years after the event. On the other hand, some witnesses are sailors who know their boat and the bathymetry of the harbours quite well. They can easily estimate the sea level variations since they need to adjust their moorings according to the sea level. Other witnesses were working as harbour guards during the night of 21–22 May 2003 and were able to take note of anomalies at precise hours.



**Fig. 2.** Location of the investigated harbours and semaphores on the French seashore (background ESRI).



**Fig. 3.** Location of the harbours affected or supposedly unaffected by the 21 May 2003 earthquake-induced tsunami (background ESRI).



**Fig. 4.** The three harbours selected for the modelling (background Landsat TM).

**Table 1.** French harbours affected by the 21 May 2003 tsunami: characteristics and observed hydrological phenomena according to witnesses.

	Basin/harbour characteristics							Observations											
	Major length (m)	Minor length (m)	Mean depth (m)	Entrance level (m)	Entrance azimuth	Global azimuth	Direct witnesses	Time interval				Minimal trough (m)		Maximal crest (m)		max. currents (nds)	Other hydrologic phenomena	Noticed impacts	
								min	max	min	max	min	max	min	max				
Le Lavandou	400	140	4.5	145	S	S	1	22:30										boats sank	
Port-Fréjus	650	210	3	68	E	S	1	20:00	21:00			-0.15	-0.2	0				none	
Saint-Rahael Santa-Lucia	380	125	4.5	47	N and S	S	1	21:30			04:00						keels touched the sea bed in the harbour		
La Figueirette	146	140	3.6	23	W	SE	4	20:00	20:30		02:00		-0.9	-1.5	0.7	0.9	15	strong current; eddies; boiling phenomena	keels touched the sea bed in the harbour; a 5 m long vessel sank; 2-ton mooring moved; mooring disrupted
Cannes – Vieux-Port	480	335	5.7	236	E	S	1	21:30			00:00				12	strong currents; boiling phenomena	numerous 2-ton moorings moved		
Cannes – Mouré Rouge	200	100	1.9	26	S	SE	3	20:30	21:00	00:30	00:45	-1.5		0.3			fishes jumping out of the water; eddies; siphon and "water step" at the antry of the harbour	a vessel was grounded on the dam; moorings disrupted; numerous 2-ton mooring moved	
Antibes – Port-Vauban	1000	520	5.5	180	N	E	3	21:00			-0.6		0.2				keels touched the sea bed in the harbour		
Menton Garavan	550	160	2.5	57	ENE	S	2	21:00		23:00		-4.0		0			big eddies at the the harbour entry of	none	

Nevertheless, in order to build observation databases a large number of testimonies are needed. Unfortunately, only a few could be recorded. The lack of witnesses can be explained by the phenomenon's arrival late at night on the French coasts (after 21:00 LT). Video surveillance tapes could have been more objective witnesses, but they are not kept longer than a month. Therefore it is essential that such field investigations be processed as soon as an event occurs since time is a crucial factor.

To better understand these observations, the tsunami was modelled in the Western Mediterranean Sea and the effects on the three selected harbours of the French Riviera were simulated.

### 3 Tsunami modelling

#### 3.1 Generalities

The method applied to model tsunami initiation, propagation and coastal impact has been in development for several years with the objective of studying tsunami hazards in regions such as French Polynesia (Sladen et al., 2007) and the Mediterranean Sea (Alasset et al., 2006; Roger and Hébert, 2008), and to better understand the source characteristics of

tsunamigenic earthquakes (Hébert et al., 2005; Sladen and Hébert, 2008). The initial sea surface elevation is obtained from the sea bottom co-seismic deformation (computed using the Okada formula, 1985), and considers a full and instantaneous deformation from the bottom to the surface of the sea. Then, to calculate the propagation, the hydrodynamical equations are solved, under the non-linear shallow water approximation, with a finite difference Crank Nicolson scheme applied to a series of nested bathymetric grids to account for the shoaling effect that occurs close to shores. It is worth noting that for this type of shallow water propagation, the tsunami propagation is non-dispersive, and the celerity equation depends only on water depth.

In the present case, different authors attempted to describe the seismic event, proposing different sources and deformation scenarios, based either on seismic or GPS data (Delouis et al., 2004; Mourad Bezzeghoud, University of Evora, Portugal, personal communication in 2006; Meghraoui et al., 2004; Semmane et al., 2005; Yelles et al., 2004; parameters are described in Table 2).

All of these scenarios have been tested and the results indicate that several sources match the tide gage records in the Balearic Islands fairly well, especially Delouis'. However, even though the phases were properly modelled, the

**Table 2.** Sources and characteristics of the 21 May 2003 earthquake according to various authors.

	Delouis	Bezzeghoud	Meghraoui	Semmane	Yelles
Longitude	36.83° N	36.83° N	36.83° N	36.83° N	36.91° N
Latitude	3.65° E	3.65° E	3.65° E	3.65° E	3.65° E
Depth of the fault centre (km)	~6	~8	~8	~16	~9
Strike (°)	70	64	54	54	60
Dip (°)	45	50	50	47	42
Rake (°)	95	111	90	90	84
Length (km)	60	50	54	64	32
Width (km)	24	16	15	32	14

computed amplitudes proved to be too low to fit the data (Alasset et al., 2006). Thus, given that all of the seismic sources yielded nearly similar results in terms of tsunamis, the source proposed by Delouis et al. (2004) was the one chosen in this study for the purpose of modelling.

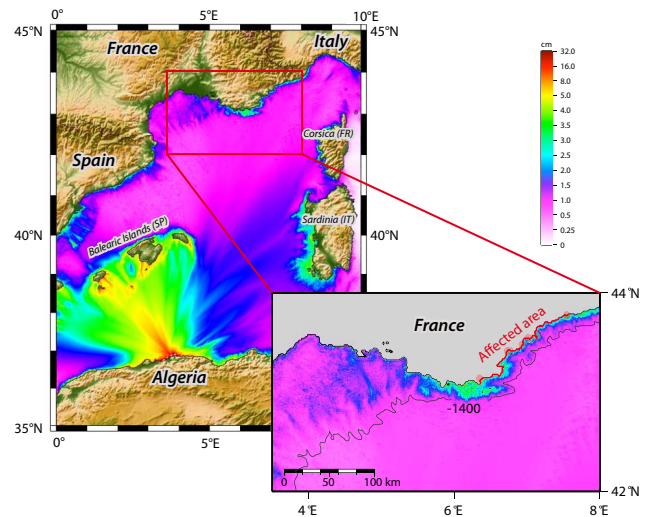
The main bathymetric grid used for tsunami modelling includes the entire Western Mediterranean Sea. It was built from GEBCO data (GEneral Bathymetric Chart of the Oceans, British Oceanographic Data Centre, 1997, resolution 1') and interpolated at a space step of 1000 m. The grid was used to model the co-seismic deformation derived from the model proposed by Delouis et al. (2004), and then to compute the maximal sea elevation reached in each cell of the grid in the Western Mediterranean Sea during the first 4 hours after the earthquake (Fig. 5).

## 3.2 Results

### 3.2.1 General results

Figure 5 clearly shows that the maximal energy wave is directed mostly towards the Balearic Islands, as aforementioned by Alasset et al. (2006). In fact, this pattern is very dependent on the fault azimuth used, but all models showed that the Balearic Islands were the most impacted. At the same time, various acceptable azimuths only changed which island was impacted the most, either Ibiza or Majorca (Alasset et al., 2006). This kind of pattern is also noticeable for the 1856 Jijel (Algeria) earthquake and associated tsunami, which is assumed to have struck mostly Menorca and the eastern part of Mallorca (Roger and Hébert, 2008). Whatever the case, the role that submarine canyons appear to play in wave amplification should be mentioned.

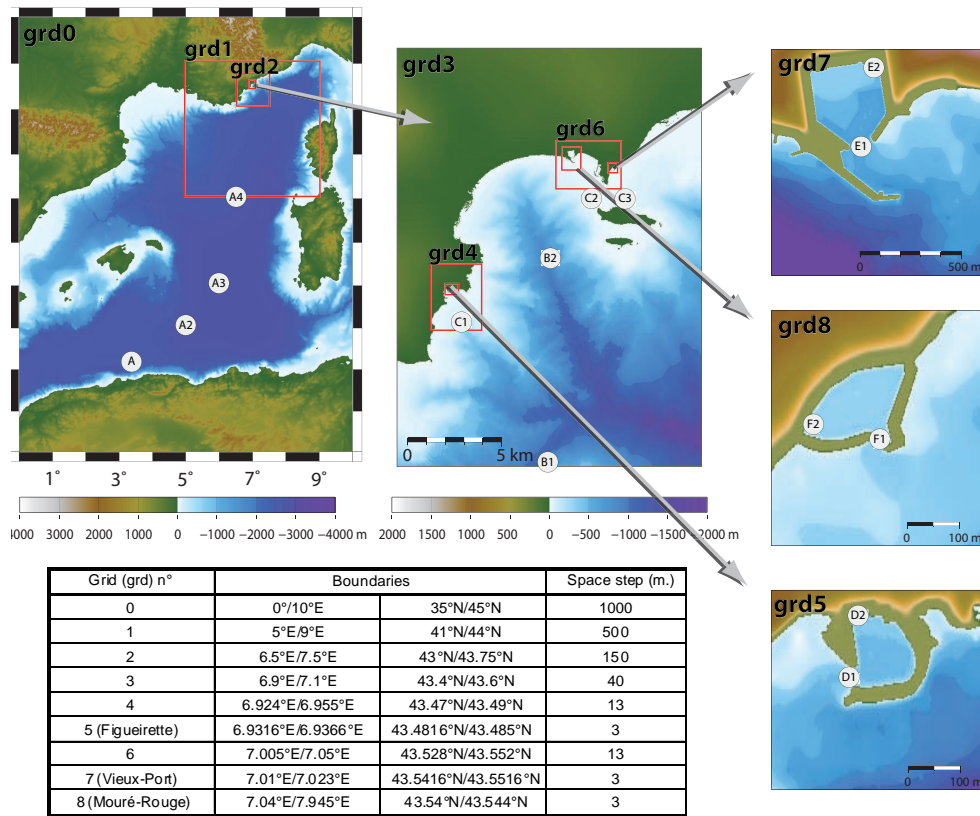
Figure 5 also reveals amplifications in several places along the Spanish, Sardinian, Corsican and South-eastern French shorelines. However, these amplifications are still less than 10 cm high on this large grid (grid 0). On the large scale, modelling clearly shows that for the French shoreline, amplified values coincide well with the areas that the field investigation determined to be affected, e.g. the Eastern French Riviera. In contrast, the Western Mediterranean French shoreline (Gulf of Lion) shows less important sea level elevations.

**Fig. 5.** Modelling of the maximal sea elevation reached during the first 4 h after the earthquake, based on Delouis' source (grid 0).

Such low elevations could be mostly explained by the shield effect of the Balearic Islands, by the loss of energy of the phenomenon when reaching the continental margin of the Gulf of Lion, and by the wide extent of the corresponding submarine shallow shelf. However, more generally, in South-eastern France, the simulated amplifications (a few centimetres of wave amplitude) are less than those witnessed during the event, but could be in agreement with the recorded signal from the tide gages in Nice (43.695° N, 7.285° E). However, the results obtained using a large scale grid of 1000 m of resolution are not expected to account for the shoaling effect which mostly contributes to the tsunami amplification when the water depth decreases in the last few tens of meters, especially along Mediterranean French coasts which are associated with steep slopes. Areas of major amplification may also match bathymetric features such as submarine canyons or particular shelf shapes that are not well mapped on the GEBCO grid.

Therefore, in order to more accurately estimate the amplification associated with the shoaling effect, the model was processed on a more precise scale on the coasts, using multi-scale grids. Coastal and harbour bathymetric grids were built to gradually enhance the precision of bathymetric data from the source to the studied harbours. As mentioned previously, the Figueirette and Mouré-Rouge harbours seem to be the locations where the most important amplifications were reported in 2003. However, nothing was reported by witnesses for the Vieux-Port of Cannes located between these 2 harbours. Thus, these 3 harbours represent good candidates to more accurately study wave amplification in Southern France during the 2003 event and to understand the observed differences.

The high resolution grids of the 3 studied harbours were built with data from GEBCO and from the French SHOM



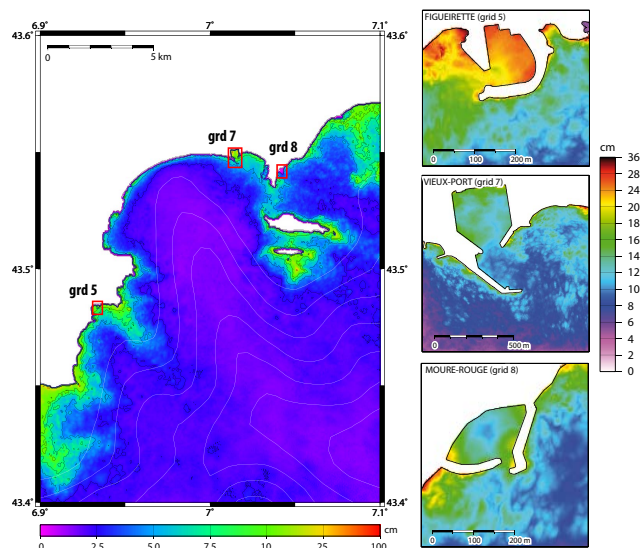
**Fig. 6.** Grids and sensors used to model the maximal sea elevation reached in the three studied harbours after the 21 May 2003 earthquake.

(Service Hydrographique et Océanographique de la Marine) with a 3 m space step and completed using navigation maps (Escales, 2007). Interpolation/extrapolation was used in parts of the harbours with no available data, by using pictures, satellite views, etc., in order to obtain a better representation of the harbours’ geometry. Finally, a total of 9 imbricated grids were built on 6 levels of resolution (Fig. 6).

### 3.2.2 Results in harbours

The modelling results (Fig. 7) show the greatest amplification inside the La Figueirette harbour, which is the smallest studied harbour (maximum wave height reaching over 22 cm).

This result is clearly less than the observations, as the observations reveal a maximum wave height reaching more than 70 cm in La Figueirette harbour. Even if the modelled propagation time was matched to the observed time of arrival (one hour after the earthquake, taking into account potential inaccuracies in witness accounts), the simulated elevation would still be less than the reported observation. As in previous studies on the impact of this event on the Balearic Islands (Alasset et al., 2006), the model reproduces only a fourth to a third of the recorded or observed maximal amplitudes.



**Fig. 7.** Maximal sea level elevation during the first 4 h after the earthquake in the three studied harbours and the bay of Cannes.



Concerning the Vieux-Port, the largest studied harbour (located between the 2 harbours where the maximum amplitudes were observed), a very small sea level variation is obtained, with a maximum of about 15 cm. The Mouré-Rouge harbour is hardly larger than La Figueirette, and seems to be much less affected. Perhaps the presence of the Lérins Islands to the south of the Mouré-Rouge harbour shielded it (Fig. 7), but this has to be demonstrated further.

Globally, the detailed modelling does not allow for a reproduction of the observations in terms of amplitude. It is important to mention here that the accounts given by witnesses four years after an event need to be considered with caution. However, these modelling results confirm that the La Figueirette harbour was the most affected site, at least in relation to the two other ones studied.

One idea proposed in this study is that additional amplifications, due to resonances outside or inside the considered harbours, may have also occurred. The modelling method already accounts for these phenomena, as in French Polynesia (e.g. Hébert et al., 2009) where long lasting resonance periods observed were efficiently accounted for by the tide gages in Taiohae Bay. Therefore, since the seismic source seems to produce amplitudes that are too low, a frequency analysis of the signal from the source (Algerian Margin) to the French coasts is conducted. Additionally, the responses are tested in the bay and in the harbours and then discussed using synthetic modelling.

### 3.2.3 Frequency analysis in harbours

Numerous studies have shown that submarine features or sudden bathymetric changes could have consequences on incident wave amplitudes, inducing, for example, the shelf resonance (Monserrat et al, 2006; Horillo et al., 2008; Munger and Cheung, 2008). Carrier et al. (1971) showed that seismic-generated tsunamis, like atmospheric pressure disturbances, are possible causes of harbour resonance. Changes in the geometry of a harbour modify its natural period of oscillation (Monso de Prat and Escartin Garcia, 1994; Bellotti, 2007). This is an important aspect to consider in order to protect a harbour against the arrival of long waves.

In the realm of this study, the objective is to understand why, in the same area, some harbours like the La Figueirette harbour were affected in 2003, while others such as the Vieux-Port and Mouré-Rouge harbours were not affected or were only affected a little. Therefore, the study focused on the evolution of periodic components of the tsunami during its propagation from its origin (the Algerian margin) to its arrival on the continental shelf and onwards to the coast.

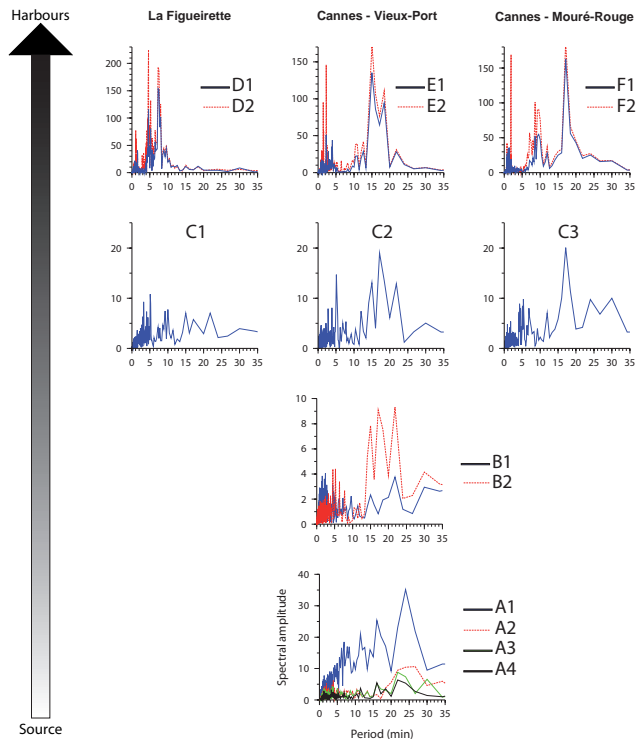
The aim is to use parallel synthetic tsunami modelling in order to avoid relying on the seismic source and in order to consider only the harbours. To define the periods which need to be studied, the results of the modelling are integrated with data about the seismic source and are analysed. The attention is then focused on the most precise grids (the harbours):

synthetic tide gages are placed over the different grids (a few are located on Fig. 6), particularly in harbours, in locations which do not correspond to nodes (minimal sea level amplitude for the standing wave), i.e. near the structures of the harbours in question (breakwaters, piers, etc.), where the anti-nodes occur. This is an important aspect to take into account for resonance investigations. Spectral analysis of each recorded synthetic signal is performed using FFT (Fig. 8).

On the scale of the Western Mediterranean sea, the frequency analysis of the signal recorded by the synthetic sensors from the Algerian shore to the French coasts reveals the appearance and disappearance of main periods. Except for a global diminution of the main amplitude during the propagation from A1 to A2 (loss of energy due to depth and geometrical spreading), the sensors recorded a decrease in the low frequency peak (20–25 min) as time passes from sensor A1 to sensor A4. A second peak (16–17 min) remains during the entire propagation process. These two peaks can be linked to the geometry of the rupture. Nothing particular about the high frequencies (less than 10 min) can be deduced.

Similarly, given that every water body (including man-made harbours or bays) has natural oscillation modes with eigenperiods that depend on its physical characteristics (Jansa et al., 2007), i.e. its geometry and depth (Monso de Prat and Escartin Garcia, 1994; Woo et al, 2004), a spectral analysis in the different grids was conducted, especially on the 3 harbours' grids, using a method inspired by Yalciner and Pelinovsky (2006) which these authors used in the Marmara Sea. This methodology consists in comparing the evolution of a signal modelled with the available information about its source all along its path to the evolution of a well known synthetic signal along the same path. Through modelling, the synthetic signal is altered by the environment of the basin. By comparing these two signals, this methodology enables one to highlight the main frequencies (peaks) of each grid: if a peak is invisible on the synthetic signal analysis but visible on the source based signal analysis, it can be deduced that this peak is attributable to the source. It is to be noted that unlike in the case of the Marmara Sea, the studied basin is open. Several tests on open basins which resonance periods were known have been conducted in the bay of Sainte-Anne (Guadeloupe, eastern Caribbean Sea) and validated this methodology for such basins (Roger et al., 2009). Following this methodology, a FFT algorithm is used to analyse the evolution of an arbitrary initial surface with virtual gage points (Fig. 9). In this case, the known synthetic signal is a Gaussian.

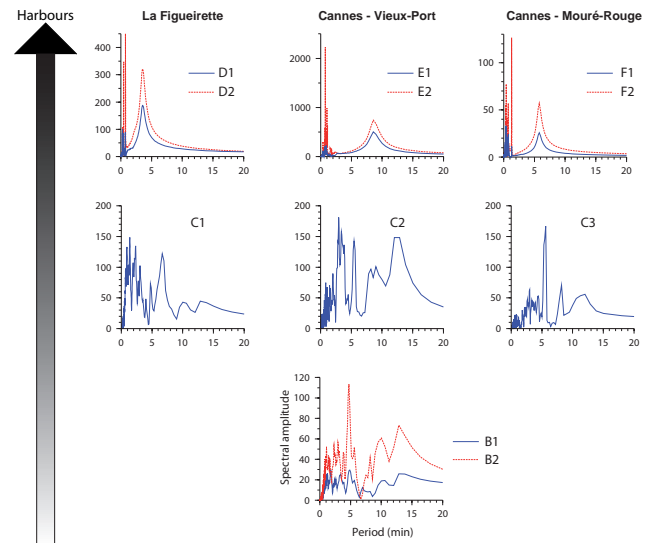
A manual correlation between the main frequency peaks of the different spectra is conducted. The main period peak (low frequencies), which corresponds to a very large and also dissipative period (the more the harbour is open, the more it is large; the resonance is not well auto-maintained), can be explained by the non-closed structure of the harbour (confirmed by additional calculations not presented here in this study).



**Fig. 8.** Signal evolution from the source (Delouis et al., 2004) to the harbours in the Gulf of La Napoule (A1 to F2 are the sensors located on Fig. 6).

The comparison of the signals recorded by five synthetic sensors located in the La Napoule Bay (B1, B2, C1, C2 and C3, Fig. 8) shows that the previously described 16–17 min peak is still present and even amplified offshore from the Vieux-Port and the Mouré-Rouge harbours (respectively C2 and C3). As this peak is not on the signal spectrum for the area where the Gaussian is applied (Fig. 9), the peak is consequently linked to the source, and not to a local resonance phenomenon. The amplification of this peak is limited offshore from the La Figueirette's harbour (C1), probably due to the presence of a submarine canyon (Fig. 6, *grd3*) which diminishes the spectral amplitudes (important dissipation). Similarly, a 7–8 min peak appears in front of the La Figueirette harbour (Fig. 8) which is not reproduced by the synthetic signal (Fig. 9). Can this peak be linked to the source? All the other peaks present in Fig. 8 are in phase with the calculated synthetic signals (Fig. 9).

Regarding the signal in the La Figueirette harbour, the D1 and D2 synthetic signal graphs (Fig. 9) show that the 16–17 min peak is still present on Fig. 8, but its amplitude is clearly diminished. The signals recorded from the application of the Gaussian (Fig. 9) indicate that the 5 min peak could be generated by a resonance effect caused by the entrance of the harbour since it disappears when the harbour is closed. The 1 min peak is also attributable to the harbour's



**Fig. 9.** Responses of the virtual sensors to a synthetic signal.

entrance, while the 7–8 min peak (which is the same on D1 and D2, Fig. 8) could correspond to a resonance outside the harbour.

In comparison to the signal in the Vieux-Port harbour, the 16–17 min peak is visible at the arrival of the signal in the harbour (Fig. 8) and could be attributed to the source as it is not reproduced by the synthetic signal (Fig. 9). No peak is attributable to the harbour's entrance. On the other hand, the 1 min peak is still visible, associated with the 2 and 4 min peaks (Fig. 8). These three peaks are amplified from the entrance (E1) to the far end of the harbour (E2). The 2 and 4 min peaks are not attributable to the Gaussian signal and are therefore probably due to a local interference (resonance before the harbour's entrance).

In the Mouré-Rouge harbour, the peaks which are due to the resonance of the harbour (less than 2 min) are well reproduced by the Gaussian and are amplified from F1 to F2. The peak associated with the entrance of the harbour (around 6 min) is still visible, but partially masked by a larger peak of a 10 min period which is not reproduced by the synthetic signal. This peak could be generated by the semi-enclosed water body between the Lérins Islands and the continental shore.

### 3.3 Discussion about the modelling

The amplifications observed by the witnesses are neither reproduced by a realistic earthquake source (Delouis et al., 2004), nor by any source available (Yelles et al., 2004; Meghraoui et al., 2004). Consequently, the study attempted to determine the characteristics which would have produced the actual observations. The detailed frequency analysis allows one to distinguish the imputable spectral component of

the source from the spectral characteristics due to harbour structures. The additional synthetic analysis using a Gaussian signal indicates which type of signal is able to stimulate the harbours or bays in question, leading to important wave amplifications. As in the Balearic Islands where the modelled amplitudes also fit poorly to the actual observations, this issue remains unexplained. Numerical dispersion exists in the modelling method, but results obtained in French Polynesia with much longer propagation paths never suffered from this poor fit when using realistic seismic sources.

When comparing the spectrums obtained with the signal coming from the seismic source to the spectrums obtained with the signal coming from the synthetic Gaussian signal, one can clearly see that some of the peaks present on the second spectrum (synthetic) do not appear on the first one (seismic source signal). This indicates that the modelled source does not stimulate all the proper modes (fundamental and/or harmonics) of the harbours. The eigenperiod of the source's signal is probably not correct, whether or not what was observed in the La Figueirette and Mouré-Rouge harbours is actually a resonance phenomenon.

The lack of physical dispersion in the propagation model could be a primary reason for the mismatch between the models and the observations, after taking into consideration the validity of eyewitness reports, as previously mentioned. Indeed, for such a moderate event, shorter tsunami wavelengths could have also been generated. A more rigorous model should take into account the dispersion of wavetrains (Boussinesq model). In addition, the very late observations reported in the harbours could be in agreement with late arrivals of dispersed wavetrains, characterized by shorter periods, which could have caused the La Figueirette's harbour to resonate. Another reason, not completely independent from the former, stands that some places along the coast could be receptive to some waves arriving from Algeria that exhibit resonance phenomena, as it was shown by Roger and Hébert (2008) in the Balearic Islands for the 1856 event. Once again, late and dispersed wavetrains could induce resonances at specific arrival times. A proper physical dispersion would allow shorter wavelengths to get amplified, stimulating short eigenperiods in some harbours. However, using a Boussinesq model would also diminish the final amplitudes, yet, it would not be required for this study as the earthquake source seems to be too low with respect to tsunami observed amplitudes.

Another weakness in the modelling could be the lack of data concerning the exact bathymetry of the harbours. Bathymetric data is not currently dense enough on the coasts (shallow water) and practically non-existent in harbours. However the data from SHOM are well resolved close to the shores, except in the harbours where the constructed grids may be not precise enough, as previously mentioned (see Sect. 3.2). However, an error of 15% on the mean water depth should not shift the main spectral values by more than 10%.

Nevertheless, the models presented in this study have helped determine the resonance periods in the studied sites, and these periods appear to be important parameters for sea level variation amplifications. By integrating data from witnessed observations into the model, the identification of the signal's periodic components in proximity to the harbours, and even at the tsunami's source, is possible. This approach displays the relationship between the resonance period (or the harmonics) of a basin – such as a harbour – and its exposure to wave amplification (Bellotti, 2007).

Harbour resonance is probably not the only parameter which has an influence on the harbours' response to the signal. A statistical study comparing the harbours' entrance orientation, geometry, etc. to the witnessed impacts could bring forward other explanations.

#### 4 Conclusions

Four years after the tsunami triggered by the 21 May 2003 Boumerdès-Zemmouri (Algeria) earthquake, a long and careful survey was conducted along the French Mediterranean coast. The maritime authorities and 135 harbours were contacted and interviewed about the observations they noticed in the hours following the earthquake.

Assessing the impacts of such a relatively small tsunami was quite challenging, as it had not been identified as a tsunami by the harbour authorities, and therefore no official national report was made concerning its impact. The conducted survey enlightened and summarized the effects of the 2003 Mediterranean Sea tsunami on the French coasts, which had not previously been studied. The results of this study showed that the effects of the tsunami was underestimated by the French tide gage records, as it had consequent effects in many French harbours.

Compared to the field observations, the various modelling approaches showed an underestimation of about a fourth to a third of the actual effects of the 21 May 2003 tsunami. Such a gap could be linked to an underestimation of the initial deformation amplitude at the source. The role of the resonance phenomenon has been underlined as an important factor of wave amplification in bays and harbours. This phenomenon needs to be refined in a detailed tsunami modelling, especially for small magnitude events. Knowing the period of resonance for each harbour allows one to deduce which wave frequency falls into resonance inside that particular water body, and thus helps one to more accurately predict and prevent the effects of the hazard for specific tsunami wavelengths. A more detailed analysis of a harbour's resonance would nevertheless be improved using continuous tide gage data whose spectral analysis provides the main eigenperiods of the basins (Monserrat et al., 1998).

Finally, the Western Mediterranean shores are not the most exposed to the tsunami hazard. The hazard level is quite low, with low recurrence and low intensities. However, the shores

are very vulnerable, as they are highly urbanized and populated, especially during summer. The 2003 phenomenon would have caused more damage due to the 15-knot currents (7 m/s) that were observed if it had occurred in the middle of the day when traffic is increased in harbours.

This study underlines the need for post-tsunami surveys to be organized as soon as a tsunami occurs, covering all the potentially affected shores. It would be interesting to organize such surveys for the 2003 event in all the Western Mediterranean basin, and more particularly in Spain, Algeria, Tunisia and Italy, where modelling shows an important amplification of the sea level elevation along these shores.

*Acknowledgements.* The authors would like to thank the CEA (French atomic energy commission) who financed the field investigation along the French shore. The work was funded within the FP6 European project TRANSFER under contract 037058 and within the RiskNat program under contract ANR-08-RISKMAT-005-01/MAREMOTI. The paper benefited from constructive reviews by Alexander B. Rabinovich and an anonymous referee.

The authors would also like to thank all the administrations who provided them with the records of the tide gages:

J. P. Alasset, from the “Institut de Physique du Globe de Strasbourg”, who collected several records of the Italian tide gages through the “Istituto Superiore per la Protezione e la Ricerca Ambientale” (ISPRA).

The Italian ISPRA, and more specifically the technical services provided by S. Corsini, for the tide gage in Genova.

The French “Service Hydrologique de la Marine Nationale” (SHOM), and more specifically R. Jehan who provided the records of the tide gage in Nice (France); R. Creach and P. Bonnefond from the SHOM’s RONIM project for the other French tide gages.

The French “Service de Navigation Maritime Languedoc Roussillon” (SNMLR), who provided the records of the tide gage in Sète.

The Spanish “Instituto Español de Oceanografía de Madrid” (IEO, Spanish Oceanographic Institute), and more specifically M. J. Garcia who provided the records of the tide gage in Palma de Mallorca.

The Spanish “IGN Madrid”, and the “Puertos del Estado Madrid” administrations, for the records of the other Spanish gages.

The CROSS, for searching their database for interventions during the evening of 21 and the night of 21–22 May.

All the harbours’ staff which participated in, or facilitated, the field investigation.

All of the witnesses who accepted to share their experience of the 2003 Boumerdès-Zemmouri tsunami with us.

Finally, Christa Teplicky who kindly corrected this article.

Edited by: S. Tinti

Reviewed by: A. Rabinovich and another anonymous referee

## References

- Alasset, P.-J., Hébert, H., Maouche, S., Calbini, V., and Meghraoui, M.: The tsunami induced by the 2003 Zemmouri earthquake (Mw=6.9, Algeria): modelling and results, *Geophys. J. Int.*, 166, 213–226, 2006.
- Assier-Rzadkiewicz, S., Heinrich, P., Sabatier, P. C., Savoye, B., and Bourillet, J. F.: Numerical Modelling of a Landslide-generated Tsunami: The 1979 Nice Event, *Pure Appl. Geophys.*, 157(10), 1707–1727, 2000.
- Bellotti, G.: Transient response of harbours to long waves under resonance conditions, *Coast. Eng.*, 54, 680–693, 2007.
- Carrier, G. F., Shaw, R. P., and Miyata, M.: The response of narrow mouthed harbours in a straight coastline to periodic incident waves, *J. Appl. Mech.*, 38E-2, 335–344, 1971.
- Delouis, B., Vallee, M., Meghraoui, M., Calais, E., Maouche, S., Lammali, K., Mahsas, A., Briole, P., Benhamouda, F., and Yelles, K.: Slip distribution of the 2003 Boumerdès-Zemmouri earthquake, Algeria, from teleseismic, GPS, and coastal uplift data, *Geophys. Res. Lett.*, 31, L18607, doi:10.1029/2004GL020687, 2004.
- Eva, C. and Rabinovich, A. B.: The February 23, 1887 tsunami recorded on the Ligurian coast, western Mediterranean, *Geophys. Res. Lett.*, 24(4), 2211–2214, 1997.
- Escales: Guide de Bord, edited by: “Editions de Chabassol”, Bussy-St-Georges, France, 592 pp., 2007.
- Gerardi, F., Barbano, M. S., De Martini, P. M., and Pantosti, D.: Discrimination of Tsunami Sources (Earthquake versus Landslide) on the Basis of Historical Data in Eastern Sicily and Southern Calabria, *B. Seismol. Soc. Am.*, 98(6), 2795–2805, 2008.
- Gutscher, M. A., Roger, J., Baptista, M.-A., Miranda, J. M., and Tinti, S.: Source of the 1693 Catania earthquake and tsunami (southern Italy): New evidence from tsunami modelling of a locked subduction fault plane, *Geophys. Res. Lett.*, 33, L08309, doi:10.1029/2005GL025442, 2006.
- Hébert, H., Schindelé, F., Altinok, Y., Alpar, B., and Gazioglu, C.: Tsunami hazard in the Marmara Sea (Turkey): a numerical approach to discuss active faulting and impact on the Istanbul coastal areas, *Mar. Geol.*, 215, 23–43, 2005.
- Hébert, H., Reymond, D., Krien, Y., Vergoz, J., Schindelé, F., Roger J., and Loevenbruck, A.: The 15 August 2007 Peru earthquake and tsunami: influence of the source characteristics on the tsunami heights, *Pure Appl. Geophys.*, 166, 1–22, 2009.
- Jansa, A., Monserrat, S., and Gomis, D.: The rissaga of June 2006 in Ciutadella (Menorca), a meteorological tsunami, *Adv. Geosci.*, 12, 1–4, 2007, <http://www.adv-geosci.net/12/1/2007/>.
- Maramai, A., Graziani, L., and Tinti, S.: Tsunamis in the Aeolian Islands (southern Italy): a review, *Mar. Geol.*, 215(1–2), 11–21, 2005.
- Meghraoui, M., Maouche, S., Chema, B., Cakir, Z., Aoudia, A., Harbi, A., Alasset, J.-P., Ayadi, A., Bouhadad, Y., and Benhamoud, F.: Coastal uplift and thrust faulting associated with the Mw=6.8 Zemmouri (Algeria) earthquake of 21 May, *Geophys. Res. Lett.*, 31, L19605, doi:10.1029/2004GL020466, 2003.
- Monserrat, S., Rabinovich, A. B., and Casas, B.: On the Reconstruction of the Transfer Function for Atmospherically Generated Seiches, *Geophys. Res. Lett.*, 25(12), 2197–2200, 1998.
- Monserrat, S., Vilibić, I., and Rabinovich, A. B.: Meteotsunamis: atmospherically induced destructive ocean waves in the tsunami frequency band, *Nat. Hazards Earth Syst. Sci.*, 6, 1035–1051,

- 2006, <http://www.nat-hazards-earth-syst-sci.net/6/1035/2006/>.
- Monso de Prat, J. L. and Escartin Garcia, F. J.: Long wave resonance effects produced by changes in the layout of the port of Ciutadella (Menorca, Spain), *Bulletin of the Permanent International Association of Navigation Congresses*, 83/84, 209–216, 1994.
- Munger, S. and Cheung, K. F.: Resonance in Hawaii waters from the 2006 Kuril Islands tsunami, *Geophys. Res. Lett.*, 35, L07605, doi:10.1029/2007GL032843, 2008.
- Roger, J. and Hébert, H.: The 1856 Djijelli (Algeria) earthquake and tsunami: source parameters and implications for tsunami hazard in the Balearic Islands, *Nat. Hazards Earth Syst. Sci.*, 8, 721–731, 2008, <http://www.nat-hazards-earth-syst-sci.net/8/721/2008/>.
- Roger, J., Allgeyer, S., Hébert, H., Baptista, M. A., Loevenbruck, A., and Schindelé, F.: The 1755 Lisbon tsunami in Guadeloupe Archipelago: contribution of numerical modelling, *The Open Oceanography Journal*, accepted, 2009.
- Semmane, F., Campillo, M., and Cotton, F.: Fault location and source process of the 2003 Boumerdès, Algeria, earthquake inferred from geodetic and strong motion data, *Geophys. Res. Lett.*, 32, L01305 1–4, 2005.
- Sladen, A., Hébert, H., Schindelé, F., and Reymond, D.: Evaluation of far-field tsunami hazard in French Polynesia based on historical data and numerical simulations, *Nat. Hazards Earth Syst. Sci.*, 7, 195–206, 2007, <http://www.nat-hazards-earth-syst-sci.net/7/195/2007/>.
- Sladen, A. and Hébert, H.: On the use of satellite altimetry to infer the earthquake rupture characteristics: application to the 2004 Sumatra event, *Geophys. J. Int.*, 172, 707–714, 2008.
- Soloviev, S., Solovieva, O. N., Go, C. N., Kim, K. S., and Shchetnikov, N. A.: Tsunamis in the Mediterranean Sea 2000 B.C. – 2000 A.D. *Advances in Natural and Technological Hazards Research*, Kluwer Academic Publishers, 237 pp., 2000.
- Tinti, S., Maramai, A., and Graziani, L.: The new catalogue of the Italian tsunamis, *Nat. Hazards*, 33, 439–465, 2004.
- Woo, S.-B., Hong, S.-Y., and Han, K.-N.: Numerical study of nonlinear resonance in narrow bay, *OCEANS '04, MTT/IEEE TECHNO-OCEAN '04*, 3, 1512–1518, ISBN: 0-7803-8669-8, 2004.
- Yalciner, A. C. and Pelinovsky, E. N.: A short cut numerical method for determination of periods of free oscillations for basins with irregular geometry and bathymetry, *Ocean. Eng.*, 34(5–6), 747–757, 2007.
- Yelles, K., Lammali, K., and Mahsas, A.: Coseismic deformation of the May 21st, 2003, Mw=6.8 Boumerdes earthquake, Algeria, from GPS measurements, *Geophys. Res. Lett.*, 31, L13610, doi:10.1029/2004GL019884, 2004.