



Towards biomarkers of feed efficiency Using –omics approaches for biomarkers discovery

Florence Gondret, Mette Skou Hedemann, Farouk Messad, Lisanne Vershuren, Sandrine Grasteau, Junjun Wang, Gabriel de La Fuente, H  l  ne Gilbert, Alfons Jansman

► To cite this version:

Florence Gondret, Mette Skou Hedemann, Farouk Messad, Lisanne Vershuren, Sandrine Grasteau, et al.. Towards biomarkers of feed efficiency Using –omics approaches for biomarkers discovery. R  union finale du projet europ  en Feed-a-Gene, Jan 2020, Rennes, France. 2020. hal-02467148

HAL Id: hal-02467148

<https://hal.science/hal-02467148>

Submitted on 5 Jun 2020

HAL is a multi-disciplinary open access archive for the deposit and dissemination of scientific research documents, whether they are published or not. The documents may come from teaching and research institutions in France or abroad, or from public or private research centers.

L'archive ouverte pluridisciplinaire **HAL**, est destin  e au d  p  t et    la diffusion de documents scientifiques de niveau recherche, publi  s ou non,   manant des   tablissements d'enseignement et de recherche fran  ais ou   trangers, des laboratoires publics ou priv  s.



Towards biomarkers of feed efficiency

Using –omics approaches for biomarkers discovery

Florence Gondret¹, Mette Skou Hedemann², Farouk Messad¹, Lisanne Vershuren^{3,7},
Sandrine Grasteau⁴, Junjun Wang⁵, Gabriel de la Fuente⁶, Hélène Gilbert⁷ & Alfons Jansman⁸

1. Institut National de Recherche en Agriculture, Alimentation et Environnement (INRAE) 35590 Saint-Gilles, France. 2. Aarhus University, 8830 Tjele, Denmark. 3. Topigs Norsvin, Netherlands, 4. INRAE, BOA, 37380 Nouzilly, France, 5. China Agricultural University (CAU), Beijing, Chine, 6. Universitat de Lleida, 25003 Lleida, Spain, 7. INRAE, 31326 Castanet-Tolosan, France, 8. Wageningen UR (WUR) Livestock Research, 6708 PB Wageningen, Netherlands.

Challenges and objectives

- Feed conversion ratio (FCR): the classical measure of feed efficiency, calculated as ratio of feed intake to body weight gain.
- Residual feed intake (RFI): a measure of net feed efficiency, defined as observed feed intake - feed intake predicted from growth and maintenance requirements
- Feed intake, body weight and even body adiposity, must be recorded during a test period on each animal, which is time-consuming, expensive, and even difficult.
- Feed efficiency is integrative of many functional pathways related to diverse biological functions, and is highly variable

Providing proxies for feed efficiency

Molecular proxies for feed efficiency, that are involved in key biological pathways, may be useful to improve breeding schemes and avoid side-effects of selection.

Finding indicators of feed efficiency at different periods during growth

Feed efficiency is calculated after a long period of test, so that predictive indicators are in huge demand to incorporate feed efficiency in breeding programs or in decision nutritional support tools.

Search for biomarkers

- Hypothesis-based** : a candidate in specific biological function is measured and related to feed efficiency traits
- Discovery-based** : thousands to millions of molecules are assessed by high-throughput put methodologies. The most discriminant molecules in the variability of feed efficiency traits are proposed.
- Relationships are modelled using regression, Partial Least Squares Discriminant Analysis (PLS) and Machine Learning Methods

To learn more ...

Poster - Serum color and chicken digestive efficiency
Sandrine Grasteau - Email: sandrine.grasteau@inrae.fr

Poster - Metabolomics on rabbit urine
Mette Skou Hedemann - Email: mette.hedemann@anis.au.dk

Running slides - Biomarkers on urine, plasma & blood for pig efficiency traits
Florence Gondret - Email: Florence.gondret@inrae.fr

Principles

What is a biomarker ?

A biological molecule that can be used to follow normal or pathological processes in animals, and is objectively measured and evaluated to diagnose, monitor, predict, or evaluate susceptibility/risk in research, practice or personalized medicine.

Biomarker can refer to one molecule or a combination of molecules.

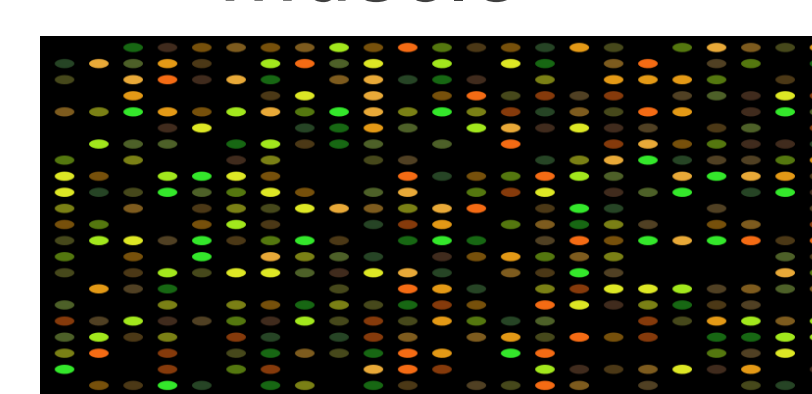
Discovery process

Genes, transcripts, proteins, metabolites or non-coding regulatory RNAs from all over the body can be used as biomarkers.

They can be detected by spectroscopic, chemical, molecular or biochemical studies.



Muscle

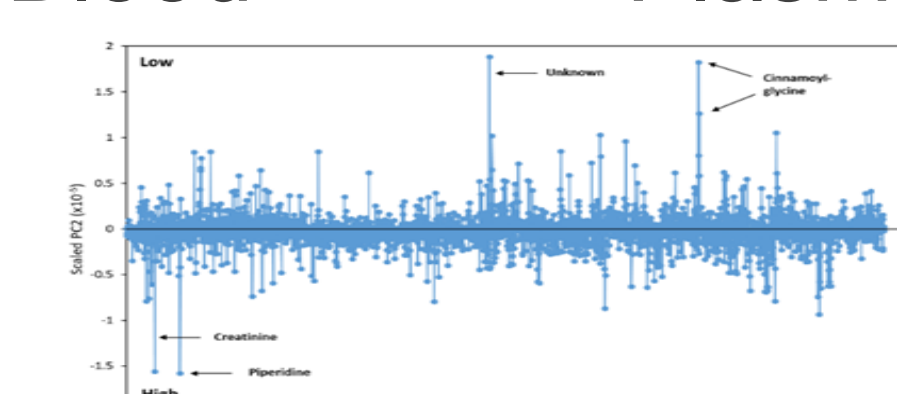


Transcriptomics

(gene expression)

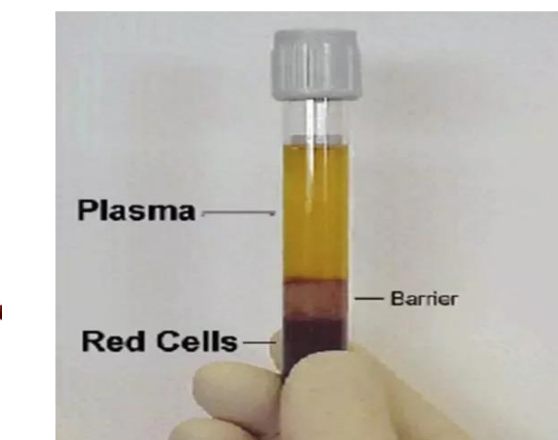


Blood



Metabolomics

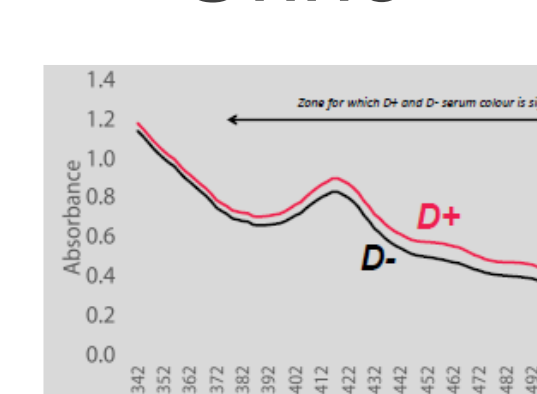
(metabolite concentration)



Plasma



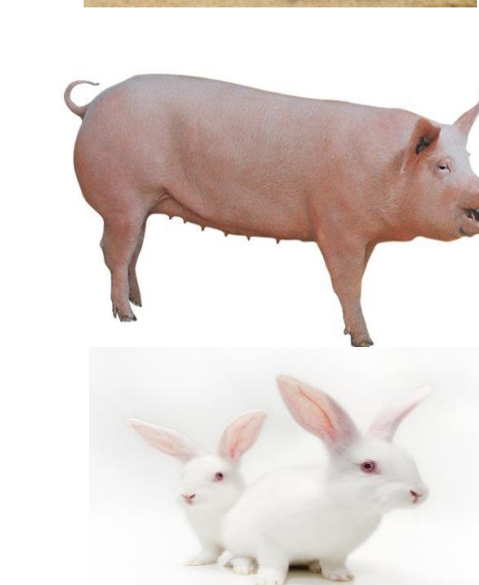
Urine



Absorbance

(target variation)

Experimental designs



- Extremes for nitrogen efficiency or for whole feed efficiency
- Lines selected for digestive efficiency or for RFI
- Genotypes x diets to generate huge variability in nitrogen or feed efficiencies

Candidates need to be further evaluated on larger sets of animals reared in production conditions

Expected outcomes

- New traits to select animals for feed efficiency.
- New indicators to evaluate and manage animals according to their own potential for feed efficiency (diets with high Lys content, tailored diets, etc.).



www.feed-a-gene.eu



The Feed-a-Gene Project has received funding from the European Union's H2020 Programme under grant agreement no 633531.