

Contents lists available at [ScienceDirect](#)

Data in Brief

journal homepage: www.elsevier.com/locate/dib

Corrigendum to “Dataset on powered two wheelers fall and critical events detection”



Abderrahmane Boubezoul^{a,*}, Fabien Dufour^b, Samir Bouaziz^c,
Stéphane Espié^b

^a University Paris-Est, IFSTTAR, TS2-SIMU&MOTO, 14-20 Boulevard Newton, F-77447 Marne-la-Vallée, France

^b TROPHY R&D, 1 Avenue Eiffel, 78420 Carrières-sur-Seine, France

^c University Paris-Sud, SATIE Laboratory, 91405 Orsay, France

The authors have discovered that the data associated with this article contained errors, specifically the value of the accelerometer that measures lateral accelerations, designated in the dataset by **Ay**. A bug in the software used to convert the collected data from binary to ASCII format during the experiments caused an inversion between **Ay** and another sensor. The figures below (Figs. 1–4) show the evolution of the accelerometers measurements (axe, Ay, Az) before and after the correction of the bug in the four fall datasets.

In the three scenarios above (Figs. 1–3) the recording has been stopped after the motorcycle was lifted after the fall.

In Fig. 4 the recording has been stopped at the end of the fall.

The authors regret any inconvenience caused and are happy to publish the corrected data, which are available as supplemental materials attached to this corrigendum.

DOI of original article: [10.1016/j.dib.2019.103828](https://doi.org/10.1016/j.dib.2019.103828)

* Corresponding author.

E-mail addresses: abderrahmane.boubezoul@ifsttar.fr (A. Boubezoul), fdufour@trophy-group.com (F. Dufour), samir.bouaziz@u-psud.fr (S. Bouaziz), espie.stephane@ifsttar.fr (S. Espié).

<https://doi.org/10.1016/j.dib.2020.105577>

2352-3409/© 2020 The Author(s). Published by Elsevier Inc. All rights reserved.

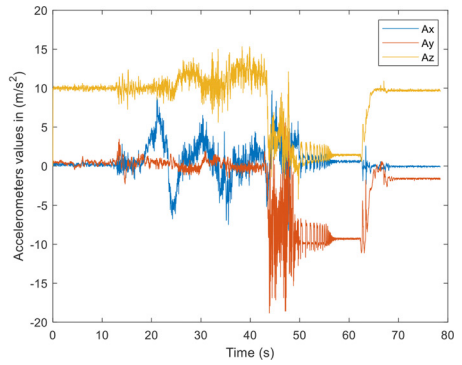
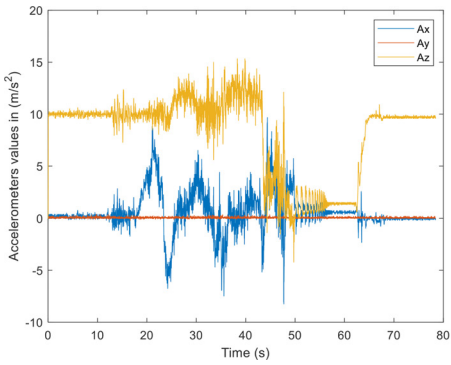


Fig. 1. The accelerations measurements (A_x , A_y , A_z) in the Fall in a curve scenario.

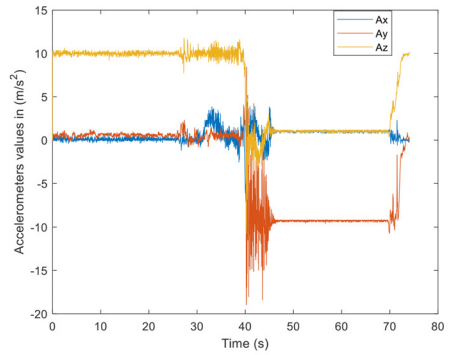
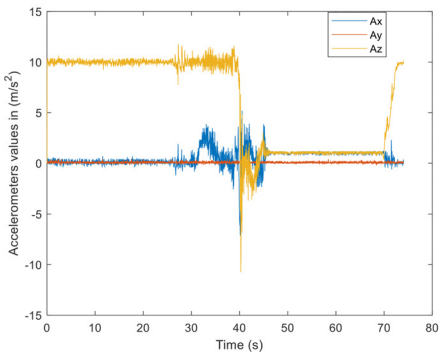


Fig. 2. The accelerations measurements (A_x , A_y , A_z) in the Fall on a slippery straight road section scenario.

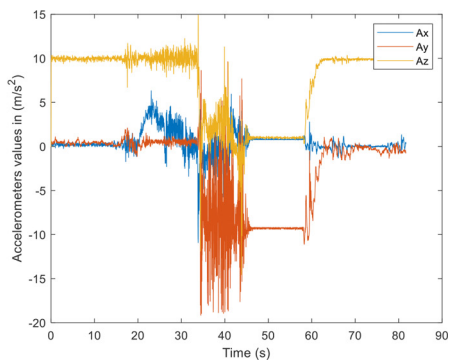
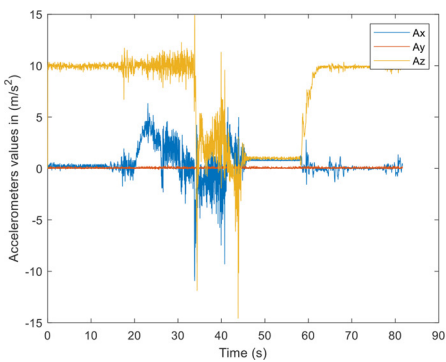


Fig. 3. The accelerations measurements (A_x , A_y , A_z) in the Fall with leaning of the motorcycle.

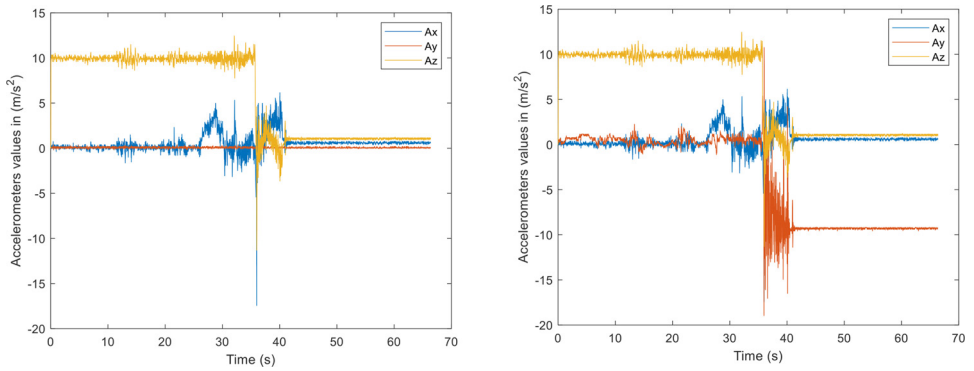


Fig. 4. The accelerations measurements (A_x , A_y , A_z) in the Fall in the roundabout scenario.

Supplementary material

Supplementary material associated with this article can be found, in the online version, at doi:[10.1016/j.dib.2020.105577](https://doi.org/10.1016/j.dib.2020.105577).