



HAL
open science

Influence of dyskalemia at admission and early dyskalemia correction on survival and cardiac events of critically ill patients

Lila Bouadma, Stefan Mankikian, Michael Darmon, Laurent Argaud, Camille Vinclair, Shidasp Siami, Maité Garrouste-Orgeas, Laurent Papazian, Yves Cohen, Guillaume Marcotte, et al.

► To cite this version:

Lila Bouadma, Stefan Mankikian, Michael Darmon, Laurent Argaud, Camille Vinclair, et al.. Influence of dyskalemia at admission and early dyskalemia correction on survival and cardiac events of critically ill patients. *Crit Care*, 2019, 23 (1), pp.415. 10.1186/s13054-019-2679-z . hal-02465736

HAL Id: hal-02465736

<https://hal.science/hal-02465736v1>

Submitted on 1 Feb 2024

HAL is a multi-disciplinary open access archive for the deposit and dissemination of scientific research documents, whether they are published or not. The documents may come from teaching and research institutions in France or abroad, or from public or private research centers.

L'archive ouverte pluridisciplinaire **HAL**, est destinée au dépôt et à la diffusion de documents scientifiques de niveau recherche, publiés ou non, émanant des établissements d'enseignement et de recherche français ou étrangers, des laboratoires publics ou privés.



Distributed under a Creative Commons Attribution 4.0 International License

RESEARCH

Open Access



Influence of dyskalemia at admission and early dyskalemia correction on survival and cardiac events of critically ill patients

Lila Bouadma^{1,2,3*}, Stefan Mankikian⁴, Michael Darmon^{5,6}, Laurent Argaud⁷, Camille Vincclair¹, Shidasp Siami⁸, Maité Garrouste-Orgeas⁹, Laurent Papazian¹⁰, Yves Cohen^{11,12}, Guillaume Marcotte¹³, Lenka Styfalova¹⁴, Jean Reignier¹⁵, Alexandre Lautrette¹⁶, Carole Schwebel¹⁷, Jean-Francois Timsit^{1,2} on behalf of the OUTCOMEREA STUDY GROUP¹⁸

Abstract

Objectives: Our objectives were (1) to characterize the distribution of serum potassium levels at ICU admission, (2) to examine the relationship between dyskalemia at ICU admission and occurrence of cardiac events, and (3) to study both the association between dyskalemia at ICU admission and dyskalemia correction by day 2 on 28-day mortality.

Design: Inception cohort study from the longitudinal prospective French multicenter OUTCOMEREA database (1999–2014)

Setting: 22 French OUTCOMEREA network ICUs

Patients: Patients were classified into six groups according to their serum potassium level at admission: three groups of hypokalemia and three groups of hyperkalemia defined as serious hypokalemia $[K+] < 2.5$ and serious hyperkalemia $[K+] > 7$ mmol/L, moderate hypokalemia $2.5 \leq [K+] < 3$ mmol/L and moderate hyperkalemia $6 < [K+] \leq 7$ mmol/L, and mild hypokalemia $3 \leq [K+] < 3.5$ mmol/L and mild hyperkalemia $5 < [K+] \leq 6$ mmol/L. We sorted evolution at day 2 of dyskalemia into three categories: balanced, not-balanced, and overbalanced.

Intervention: None

Measurements and main results: Of 12,090 patients, 2108 (17.4%) had hypokalemia and 1445 (12%) had hyperkalemia.

Prognostic impact of dyskalemia and its correction was assessed using multivariate Cox models. After adjustment, hypokalemia and hyperkalemia were independently associated with a greater risk of 28-day mortality. Mild hyperkalemic patients had the highest mortality (hazard ratio (HR) 1.29, 95% confidence interval (CI) [1.13–1.47], $p < 0.001$). Adjusted 28-day mortality was higher if serum potassium level was not-balanced at day 2 (aHR = 1.51, 95% CI [1.30–1.76], $p < 0.0001$) and numerically higher but not significantly different if serum potassium level was overbalanced at day 2 (aHR = 1.157, 95% CI [0.84–1.60], $p = 0.38$). Occurrence of cardiac events was evaluated by logistic regression. Except for patients with serious hypokalemia at admission, the depth of dyskalemia was associated with increased risk of cardiac events.

(Continued on next page)

* Correspondence: lila.bouadma@bch.aphp.fr

¹UMR 1137, IAME, Université Paris Diderot, F75018 Paris, France

²Medical and Infectious Diseases Care Unit, AP-HP, Bichat University Hospital, F75018 Paris, France

Full list of author information is available at the end of the article



(Continued from previous page)

Conclusions: Dyskalemia is common at ICU admission and associated with increased mortality. Occurrence of cardiac events increased with dyskalemia depth. A correction of serum potassium level by day 2 was associated with improved prognosis.

Keywords: Potassium, Correction of potassium, Critical care, Mortality, Cardiac events

Introduction

The relationship between imbalances in potassium homeostasis and cardiac events has been well established for many years [1]. Current guidelines recommend that in patients with acute myocardial infarction serum potassium levels be maintained from 4.0 to 5.0 mmol/L or even 4.5 to 5.5 mmol/L [2]. Moreover, dyskalemia defined as a serum potassium level $[K^+] < 3$ mmol/L or $[K^+] \geq 5$ mmol/L has been incorporated into the Simplified Acute Physiology Score (SAPS II) a risk prediction model in intensive care unit (ICU) [3]. In a recent and large two-center retrospective study [4], high serum potassium level at critical care initiation was associated with an increased risk of death even at moderate increase above normal. In the same study, a decrease in serum potassium concentration ≥ 1 mmol/L within 48 h in patients with hyperkalemia after ICU admission made hyperkalemia and adjusted risk of mortality no longer significant. However, this study was retrospective and bi-centric and it cannot be ruled out that the observed results on mortality may have been explained by other factors not recorded. Moreover, this study did not evaluate the full range of serum potassium level at admission. Therefore, considering the lack of data on outcomes of dyskalemia and persistent dyskalemia in ICU patients, it is critical to extend our knowledge on the subject.

Our objectives were (1) to characterize the distribution of serum potassium levels at ICU admission, (2) to examine the relationship between dyskalemia at ICU admission and occurrence of cardiac events, and (3) to study both the association between dyskalemia at ICU admission and dyskalemia correction by day 2 on 28-day mortality.

Methods

Study design and data source

We conducted an observational study on a prospective multicenter database (OutcomeRea; www.outcomerea.org) fed by 22 French ICUs between April 1999 and January 2014. Details about the database and its quality have already been described [5–8].

According to the French law, the OUTCOMEREA database was declared to the Commission Nationale de l'Informatique et des Libertés. This study did not require individual patient consent, because it involved research on a previously developed and approved database. The

institutional review board of the Rhône-Alpes-Auvergne Clinical Investigation Centers approved this study.

Study population, data collection, and definitions

We included consecutive patients who were older than 18 years at ICU admission and alive on day 2. We excluded patients without serum potassium level measure at admission, patients with less than 2 serum potassium level measures during ICU stay, and patients with at least 2 consecutive days without serum potassium measures.

Only the first ICU admission was considered. The following information was recorded: age, sex, admission category, origin, SAPS II [3], and Sequential Organ Failure Assessment (SOFA) score [9], and Knaus Scale definitions were used to record pre-existing chronic organ failures, including respiratory, cardiac, hepatic, renal, and immunological dysfunctions [10], and cardiac events.

In the absence of recommendations for ICU patients, normal kalemia was defined as a serum potassium level between 3 and 5 mmol/L in agreement with the SAPS II. However, we delineated two more groups as borderline dyskalemia. Overall, we studied six groups of dyskalemia, three groups of hypokalemia and three groups of hyperkalemia defined as serious hypokalemia $[K^+] < 2.5$ and serious hyperkalemia $[K^+] > 7$ mmol/L, moderate hypokalemia $2.5 \leq [K^+] < 3$ mmol/L and moderate hyperkalemia $6 < [K^+] \leq 7$ mmol/L, and mild hypokalemia $3 \leq [K^+] < 3.5$ mmol/L and mild hyperkalemia $5 < [K^+] \leq 6$ mmol/L.

We sorted evolution of serum potassium level on day 2 into three categories: “balanced kalemia” = serum potassium level normal on day 2, “not-balanced kalemia” = serum potassium level still not corrected, and “overbalanced kalemia” = serum potassium level reversed from hypo- to hyperkalemia or the opposite.

The missing values of serum potassium level at D2 ($N = 114$) were substituted by the mean of serum potassium levels measured on day 1 and day 3.

Statistical analysis

The primary outcome was the 28-day mortality following admission in ICU. Secondary outcomes were cardiac events within the first 48 h of ICU stay prospectively recorded into the OUTCOMEREA database: external electric shock, cardiac arrest, myocardial infarction, minimal

heart rate < 40 beats per minute, ventricular arrhythmia, supra-ventricular arrhythmia, unspecified arrhythmia, and atrioventricular block. To summarize the data, we create a variable named “cardiac events” rated 1 if at least one of the cardiac events cited above occurred within the first 48 h.

Categorical variables are described as number (%) and continuous variables as median (interquartile range, IQR). For comparisons, we used the chi-square test for categorical data and the Mann-Whitney *U* test for continuous data.

Univariate Cox models, stratified on ICU centers, were developed to assess the independent effects on 28-day mortality. Factors included in the initial models were sex, age older than 60 years, medical admission, maximum SOFA at day 1 or 2 without renal score, main symptom at admission, underlying cardiovascular and renal conditions and immunodeficiency, variables found to be significant to the $p < 0.10$ level in univariate analyses. Stepwise variable elimination was then performed on the multivariate model to develop the most parsimonious model. Two-by-two clinically sound interactions were tested. In order to mitigate the influence of less predictable prognosis associated with asymptomatic hyperkalemia related to chronic renal failure, we forced chronic renal disease and renal replacement therapy at day 1 (D1) or D2 in the multivariate model for prognosis assessment of admission serum potassium level.

Effect of serum potassium level at admission on the 28-day mortality was assessed with a multivariate Cox model, stratified on ICU centers and adjusted on the previously identified factors independently associated with 28-day mortality. The proportionality of hazard was assessed using graphical methods that allowed concluding that the proportionality was respected.

The occurrence of cardiac events was evaluated by logistic regression stratified on ICU centers and adjusted on factors independently associated with the 28-day mortality.

Last, sensitivity analyses on patients with each category of hypokalemia or hyperkalemia at admission were performed to assess the influence of the serum potassium evolution (not-balanced, balanced, or overbalanced) on the 28-day mortality. A multivariate Cox model, stratified on the ICU center, adjusted on the independent factors of 28-day mortality, and adjusted on serum potassium level at admission, was used.

Values of $p < 0.05$ were considered significant. Analyses were performed using SAS 9.4 software (SAS Institute, Cary, NC).

Results

Study population

Of the 16,920 patients entered into the database during the study period, 12,090 fulfilled our inclusion criteria.

Overall, the prevalence of dyskalemia at admission was 29.4%: 2108 patients (17.4%) had serious to mild hypokalemia, 8537 (70.6%) patients had no dyskalemia, and 1445 (12.0%) had mild to serious hyperkalemia. The flow chart is provided in Fig. 1. The distribution of admission serum potassium levels approximated that of a normal distribution (Additional file 1: Figure S1), with a median of serum potassium level at admission of 4.0[3.6; 4.6] mmol/L.

Characteristics of patients at admission

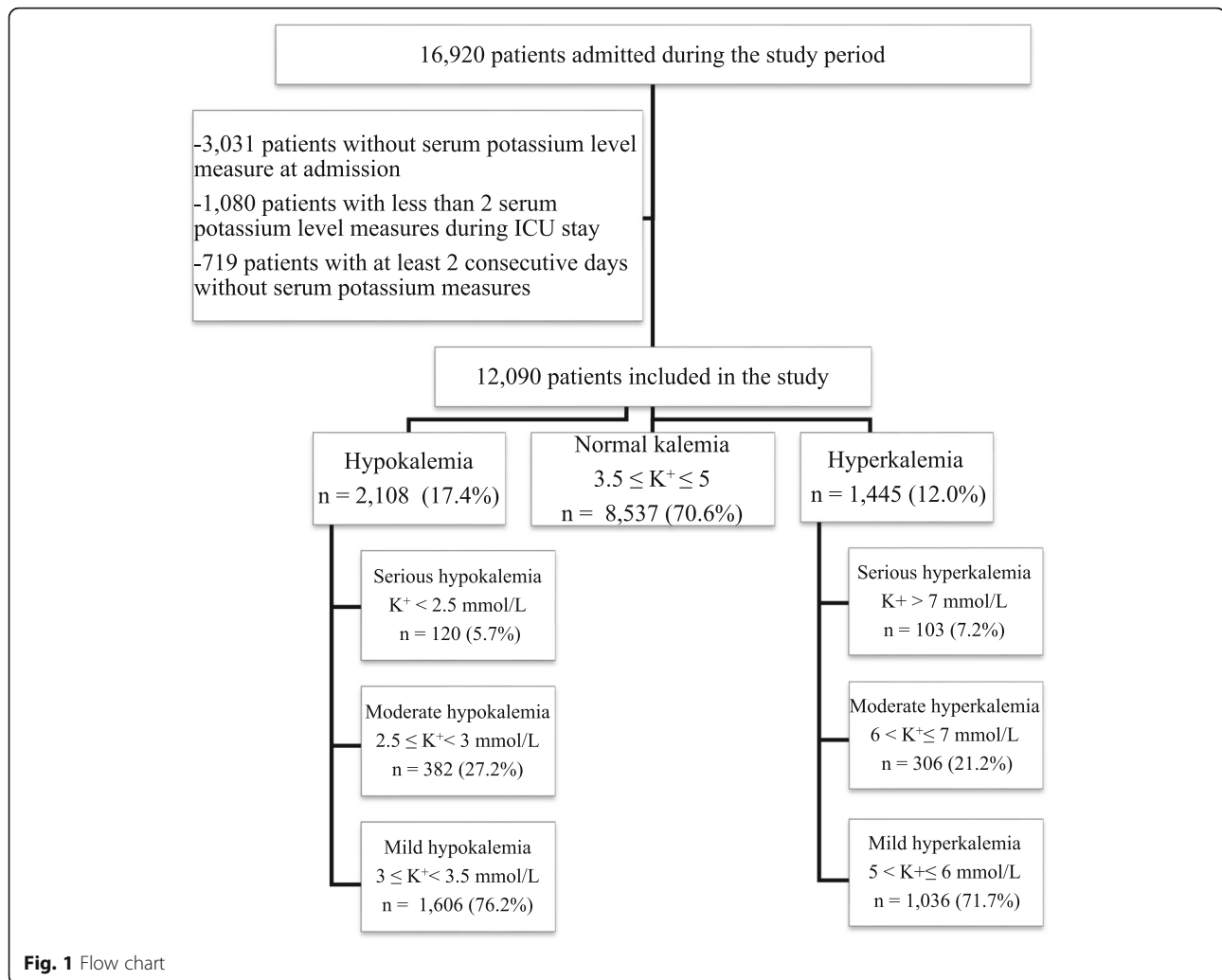
Baseline characteristics of the 12,090 study patients by groups of serum potassium level at admission are shown in Additional file 1: Table S1. The relationship between potassium levels and baseline variables was complex. The relationship was U-shaped for SAPS II, SOFA scores, and medical admission, while it was without any specific shape for other variables. Medical patients were more likely to have dyskalemia (31%, 2845/9091) than surgical patients (23%, 678/2999, $p < 0.01$) (Additional file 1: Figure S2). The prevalence of dyskalemia at ICU admission varied according to comorbidities (Additional file 1: Figure S3 and S4). The highest prevalence of hyperkalemia and hypokalemia was observed in patients with a chronic renal disease (27%) and in immunosuppressed patients (21%), respectively.

Impact of dyskalemia at admission on cardiac events and 28-day mortality

Of the 12,090 study patients, 2269 (18.8%, 95% confidence interval (CI) 18.1–19.5%) died before day 28. Details by group are provided in Fig. 1. After adjustment for confounders, hypokalemia and hyperkalemia were independently associated with a greater risk of 28-day adjusted mortality. There was a U-shaped relationship between the level of dyskalemia at admission and the adjusted mortality (Fig. 2). This U-shaped relationship was only slightly tempered because the highest risk of mortality was observed in mild hyperkalemic patients (hazard ratio (HR) 1.29, 95% CI [1.13–1.47], $p < 0.001$) (Fig. 2). All independent factors associated with increased 28-day mortality are listed in Table 1. Except for patients with serious hypokalemia at admission, the deeper the dyskalemia is at ICU admission, the more is their risk of cardiac events. Cardiac event types by each group of patients are provided in Table 2. The risk of cardiac events did not pair entirely with the mortality risk (Fig. 2). All independent factors associated with the occurrence of cardiac events within the first 48 h are listed in Table 3.

Impact on 28-day mortality of persistent (not-balanced or overbalanced) dyskalemia within the first 2 days in ICU

Correction of dyskalemia at admission was achieved within the two first days in ICU in 1067 (50.6%)



hypokalemic and 908 (62.8%) hyperkalemic patients at admission (Additional file 1: Table S2). Dyskalemia was not-balanced in 1005 (47.7%) and 427 (29.5%) and over-balanced in 36 (1.7%) and in 110 (7.6%) hypokalemic and hyperkalemic patients at admission, respectively (Additional file 1: Table S2).

After adjustment on risk factors of death at day 28, risk of dying was significantly higher if serum potassium level was not-balanced (aHR = 1.45, 95% CI [1.25; 1.67], $p < 0.001$) and numerically higher but not significantly different if serum potassium level was overbalanced (aHR = 1.24, 95% CI [0.91; 1.68], $p = 0.176$). Details for each group of patients with dyskalemia at admission are shown in Fig. 3.

Discussion

In this large multicenter cohort of unselected ICU patients, we found a high prevalence of dyskalemia at ICU admission. Dyskalemia was independently associated with a greater risk of 28-day mortality after careful

adjustment on confounders. The depth of dyskalemia was closely associated with increased risk of cardiac events. However, the risk of cardiac events did not pair entirely with the mortality risk. Moreover, in patients with abnormal serum potassium level on admission, the correction of dyskalemia at day 2 was independently associated with 28-day survival.

Hessels et al. [11] found an incidence of hypokalemia of 22% and an incidence of hyperkalemia of 20.1% while McMahon et al. [4] found an incidence of hyperkalemia of 22%. Compare to the two latter studies in ICU, incidences of dyskalemia were lower in our cohort. Discrepancies might be due to the fact that the authors retained the highest value of serum potassium level measured on the day of critical care initiation [4] or considered all the values within the first day in ICU and patients were both classified as hypokalemic or hyperkalemic patients' category [11]. The differences in patients' case-mix from the two studies may also have played a role to explain the discrepancies between studies.

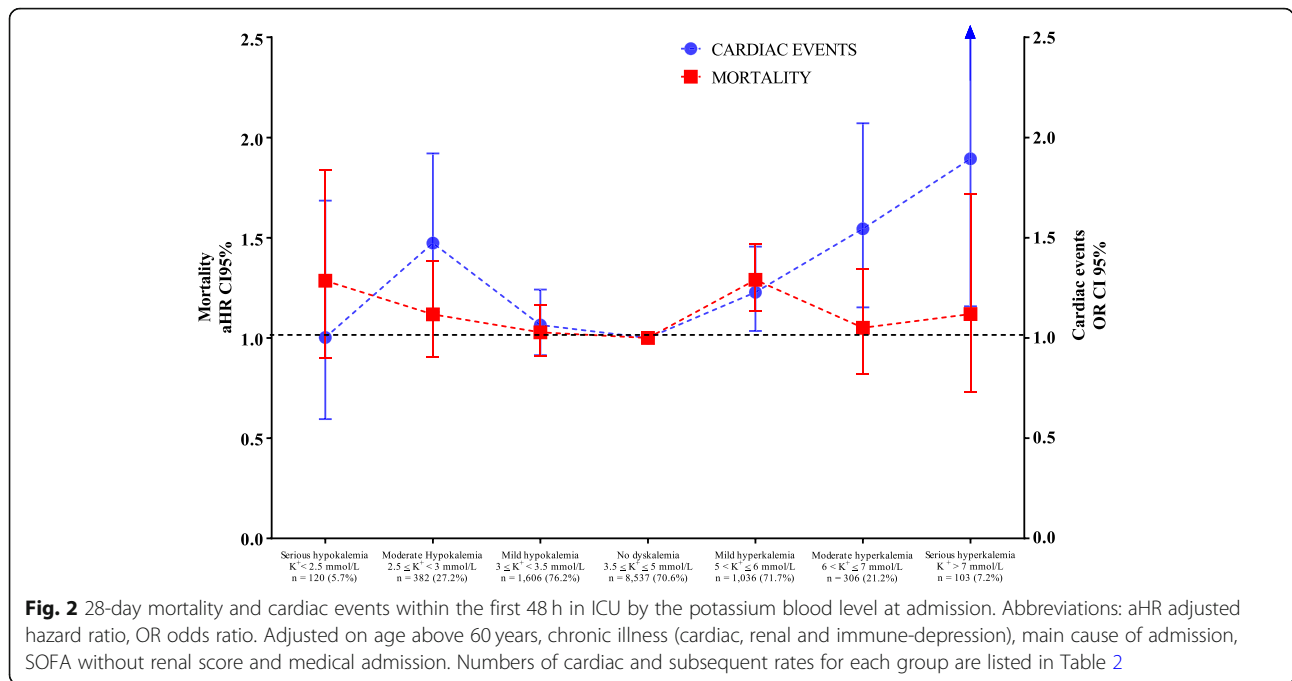


Table 1 Factors independently associated with 28-day mortality

	aHR	95% CI	p value
Potassium level at admission			
Serious hypokalemia ($K^+ < 2.5$ mmol/L)	1.286	0.899–1.840	0.17
Moderate hypokalemia ($2.5 \leq K^+ < 3$ mmol/L)	1.118	0.904–1.384	0.30
Mild hypokalemia ($3 \leq K^+ < 3.5$ mmol/L)	1.028	0.909–1.164	0.66
No dyskalemia ($3.5 \leq K^+ \leq 5$ mmol/L)	1	Ref	0.01
Mild hyperkalemia ($5 < K^+ \leq 6$ mmol/L)	1.290	1.133–1.469	0.01
Moderate hyperkalemia ($6 < K^+ \leq 7$ mmol/L)	1.051	0.822–1.343	0.69
Serious hyperkalemia ($K^+ > 7$ mmol/L)	1.119	0.729–1.719	0.61
Renal replacement therapy on day 1 or on day 2	1.337	1.184–1.510	< 0.01
Age > 60 years	1.867	1.695–2.057	< 0.01
Underlying disease			
Cardiac	1.355	1.211–1.516	< 0.01
Immunosuppression	1.366	1.221–1.528	< 0.01
Admission category, medical	1.304	1.156–1.471	< 0.01
Main symptom admission			
Shock and multiple organ failure	1.925	1.635–2.267	< 0.01
Acute respiratory failure and COPD exacerbation	1.646	1.392–1.945	< 0.01
Acute renal failure	1.238	0.947–1.618	0.12
Coma	2.337	1.960–2.787	< 0.01
Trauma, monitoring, scheduled surgery	1	Ref	< 0.01
SOFA score without points for renal failure	1.214	1.198–1.230	< 0.01

Abbreviations: COPD chronic obstructive pulmonary disease, SOFA Sequential Organ Failure Assessment Adjusted hazard ratio (aHR) on age above 60 years, chronic illness (cardiac, renal and immune-depression), main cause of admission, SOFA without renal score and medical critical disease and 95% confidence intervals (95% CI)

Table 2 Cardiac events within the first 48 h by potassium level at admission

Cardiac events	Serious hypokalemia K ⁺ < 2.5 mmol/L N = 120	Moderate hypokalemia 2.5 ≤ K ⁺ < 3 mmol/L N = 382	Mild hypokalemia 3 ≤ K ⁺ < 3.5 mmol/L N = 1606	No dyskalemia 3.5 ≤ K ⁺ ≤ 5 mmol/L N = 8537	Mild hyperkalemia 5 < K ⁺ ≤ 6 mmol/L N = 1036	Moderate hyperkalemia 6 < K ⁺ ≤ 7 mmol/L N = 306	Serious hyperkalemia K ⁺ > 7 mmol/L N = 103	p value*
External electric shock	0 (0)	6 (1.6)	8 (0.5)	71 (0.8)	13 (1.3)	0 (0)	3 (2.9)	0.01
Cardiac arrest	1 (0.8)	14 (3.7)	23 (1.4)	132 (1.5)	31 (3)	13 (4.2)	6 (5.8)	< 0.01
Myocardial infarction	1 (0.8)	1 (0.3)	4 (0.2)	21 (0.2)	5 (0.5)	2 (0.7)	0 (0)	0.54
Minimal heart rate < 40 bpm	10 (8.3)	27 (7.1)	79 (4.9)	333 (3.9)	79 (7.6)	40 (13.1)	17 (16.5)	< 0.01
Ventricular arrhythmia	10 (8.3)	43 (11.3)	103 (6.4)	420 (4.9)	73 (7)	31 (10.1)	14 (13.6)	< 0.01
Supra-ventricular arrhythmia	6 (5)	30 (7.9)	105 (6.5)	680 (8)	109 (10.5)	31 (10.1)	7 (6.8)	< 0.01
Unspecified arrhythmia	0 (0)	1 (0.3)	8 (0.5)	35 (0.4)	4 (0.4)	1 (0.3)	0 (0)	0.96
Atrioventricular block	0 (0)	0 (0)	2 (0.1)	1 (0)	0 (0)	0 (0)	0 (0)	0.28
Total	20 (16.7)	87 (22.8)	267 (16.6)	1327 (15.5)	239 (23.1)	83 (27.1)	30 (29.1)	< 0.01

Cardiac event was achieved if a patient experiment at least one cardiac event in the first 2 days. Results are expressed in number of patients (n) and percentage (%)

*Comparison across serum potassium concentration categories at ICU admission

Table 3 Factors independently associated with occurrence of cardiac events

	aOR	95% CI	p value
Potassium level at admission			
Serious hypokalemia ($K^+ < 2.5$ mmol/L)	1.002	0.595–1.585	1.00
Moderate hypokalemia ($2.5 \leq K^+ < 3$ mmol/L)	1.473	1.130–1.921	< 0.01
Mild hypokalemia ($3 \leq K^+ < 3.5$ mmol/L)	1.065	0.914–1.242	0.42
No dyskalemia ($3.5 \leq K^+ \leq 5$ mmol/L)	1	Reference	< 0.01*
Mild hyperkalemia ($5 < K^+ \leq 6$ mmol/L)	1.228	1.035–1.456	0.02
Moderate hyperkalemia ($6 < K^+ \leq 7$ mmol/L)	1.495	1.153–2.071	< 0.01
Serious hyperkalemia ($K^+ > 7$ mmol/L)	1.894	1.158–3.100	0.01
Renal replacement therapy day 1 or day 2	1.126	0.914–1.388	< 0.01
Age > 60 years	2.316	2.062–2.602	< 0.01
Underlying disease			
Cardiac	1.809	1.579–2.073	< 0.01
Immunosuppression	0.761	0.651–0.890	< 0.01
Admission category, medical	1.442	1.244–1.671	< 0.01
Main symptom admission			
Shock and multiple organ failure	1.428	1.210–1.685	< 0.01
Acute respiratory failure and COPD exacerbation	1.133	0.956–1.342	0.15
Acute renal failure	0.752	0.521–0.946	0.02
Coma	1.559	1.298–1.873	< 0.01
Trauma, monitoring, scheduled surgery	1	Ref	< 0.01
SOFA score without points for renal failure	1.185	1.166–1.205	< 0.01

Abbreviations: COPD chronic obstructive pulmonary disease, SOFA Sequential Organ Failure Assessment

Adjusted odds ratio (aOR) on age above 60 years, chronic illness (cardiac, renal and immune-depression), main cause of admission, SOFA without renal score and medical critical disease, and 95% confidence intervals (95% CI)

*The P value indicates that there are significant differences overall between level of kalemia

The prevalence of dyskalemia at ICU admission varied according to comorbidities: higher prevalence of hyperkalemia and hypokalemia were found in patients with a chronic renal disease (27%) and in immunosuppressed patients (21%) respectively. The burden of chronic kidney disease is rising [12], a well-known comorbidity associated with kalemia disturbance [13]. Henz et al. [14] quantified the impact of drugs and comorbidity on serum potassium level in 15,000 unselected patients admitted to the hospital. They identified the renal function as the strongest single predictor of serum potassium level at hospital admission. Frequent hypokalemia in immunocompromised patients could be due to corticosteroid intake, which is a common adjuvant therapy in those patients, or related to tubulopathy, a frequent adverse event of chemotherapy [15].

Increased mortality associated with potassium disturbances at admission in different settings has been described previously [4, 11]. In keeping with previous findings, we found that dyskalemia was independently associated with a higher risk of 28-day mortality after careful adjustment on confounding factors. McMahon

et al. [4] found that hyperkalemia was a strong predictor of all-cause mortality within 30 days following critical care initiation, with a significant risk gradient across potassium groups following multivariable adjustment. This U-shaped relationship between potassium levels and mortality was confirmed by Hessels et al. for both hypokalemia and hyperkalemia [11].

The mechanism for increased 28-day mortality following ICU admission in patients with dyskalemia may be related to life-threatening cardiac events. However, the degree of potassium disturbance alone is usually considered as insufficient to explain life-threatening cardiac events at least for non-severe disturbances. Indeed, in patients after acute myocardial infarction, Goyal et al. [2] showed that the relationship between potassium levels and the rate of ventricular fibrillation or cardiac arrest was relatively flat across a wide range of post-admission potassium mean levels, except for extreme values (3.0 and 5.0 mmol/L). In contrast to Goyal et al.'s study, we found that the depth of dyskalemia was closely associated with an increased risk of cardiac events. This discrepancy between our results and the data from Goyal

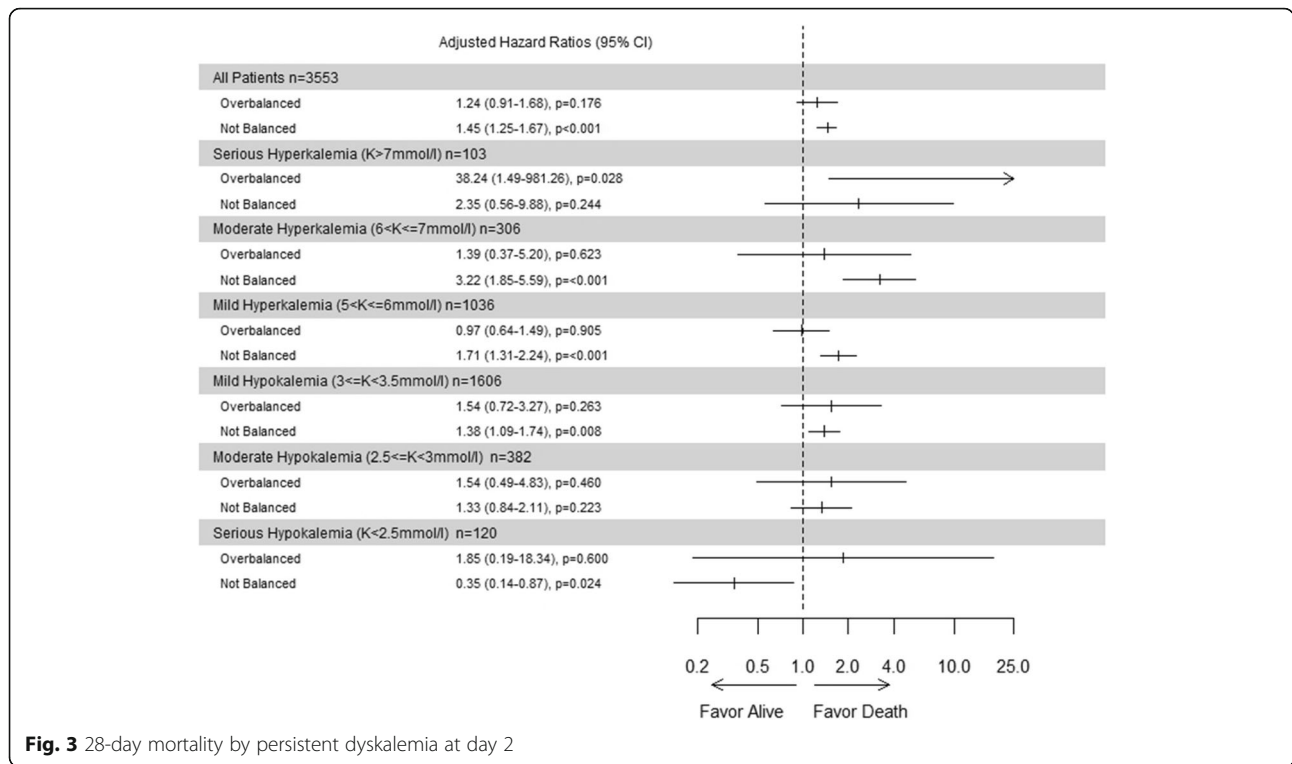


Fig. 3 28-day mortality by persistent dyskalemia at day 2

et al. may be related to our population of patients, more susceptible to the degree of potassium disturbance because of their underlying comorbidities or their severity of illness.

The risk of cardiac events did not pair with the mortality risk. Indeed, the mild hyperkalemic group had a higher risk of mortality but not a higher risk of cardiac event occurrence. We hypothesized that in this group many patients had a mild hyperkalemia related to respiratory acidosis, as this group of patients had more chronic respiratory disease, were more frequently admitted for an acute respiratory failure or a COPD exacerbation, had a greater respiratory SOFA score, and were more frequently under MV or NVI (Additional file 1: Figure S5). The cardiac events experienced by patients in this group could have been less easy to resuscitate and, although less numerous, more often fatal. Indeed, myocardial acidosis associated with hypercarbic acidosis reduces the rate of successful cardiac resuscitation [16, 17].

Although the first 48 h of cardiac events in ICU seems a relatively short time interval to explain the excess of mortality at day 28, the negative hemodynamic consequences of such cardiac events in critically ill unstable patients might not disappear immediately with the resolution of the event. In addition, cardiac events imply drug treatment such as antiarrhythmic or trigger the initiation of therapeutic anticoagulation and subsequently an increased risk of side

effects. Together, these effects could be catastrophic in severely ill patients. Recently, Klein Klouwenberg et al. showed that very short episodes of atrial fibrillation were independently associated with excess mortality in a large cohort of critically ill patients with sepsis [18].

For dyskalemic patients at admission, we observed that an unbalanced dyskalemia after 2 days in ICU was significantly associated with 28-day mortality. This finding is supported by the recent study from Hessels et al. which demonstrated that in ICU patients, potassium variability (defined as the standard deviation of all potassium levels both on day 1 (early phase) and from day 2 to day 7 (late phase)) was independently associated with increased mortality. Similarly, McMahon et al. [4] found that in hyperkalemic patients at ICU admission who had a decrease ≥ 1 mmol/L in 48 h post-critical care initiation, the association between high serum potassium levels at ICU admission and mortality is no longer significant. However, the methods of the two latter studies have significant weaknesses. Hessels et al. [11] focused their study on variability, a parameter not easy to apprehend in real time for a physician. McMahon et al. [4] studied only hyperkalemic patients and did not take into account any overbalanced correction of the initial hyperkalemia. Our results bring knowledge on the topic in comparison to the two previous studies. First, we found that after adjustment, both hypokalemia and hyperkalemia were independently associated with a greater risk of

28-day mortality. Second, we considered not-balanced and overbalanced corrections, much more relevant parameters at the bedside than variability. As this study was observational, we cannot exclude that dyskalemia correction was a marker of a change in the same way in many other parameters, for instance pH has an important effect on serum potassium levels, instead of reflecting a direct causal impact of serum potassium level.

The strengths of our study include the use of a national multicenter database, a large study size with 12,090 critically ill patients, the prospective data collection of cardiac events, and the use of a model to minimize the effects of confounding factors such as baseline imbalances.

Our study also has several limitations. First, there is a potential for biases due to self-selection of ICUs joining the OUTCOMEREA database. Second, although it is multicenter, our database is not multinational. Third, many important data are lacking in our database to interpret serum potassium levels, example being degrees of chronic disease or nutritional status of the patients. Moreover, the missing values of serum potassium level at day 2 were substituted by the mean potassium levels on day 1 and day 3. Fourth, we cannot rule out some misclassifications of not-balanced and overbalanced patients as potassium measurements were performed at the physician's discretion. Fifth, because of the observational type of the study, there is always a risk that observational data cannot elicit complex etiologic relations. For instance, many factors may have influenced cardiac events and were not assessed such as catecholamine therapy or on the contrary antiarrhythmic agents. Finally, all the care protocols and the management of dyskalemia likely varied between institutions. Thus, it remains unknown whether dyskalemia is a true cause of excess mortality and amenable to treatment or merely a marker of ICU patients complexity. In conclusion, relations between potassium management and outcome can only be investigated in a large randomized study [19–21].

Conclusion

Dyskalemia is common at ICU admission and associated with increased mortality. Occurrence of cardiac events increased with dyskalemia depth. A correction of serum potassium level by day 2 improved prognosis.

Supplementary information

Supplementary information accompanies this paper at <https://doi.org/10.1186/s13054-019-2679-z>.

Additional file 1: Table S1. Baseline characteristics by serum potassium level at admission. **Table S2.** Crude mortality according to the dyskalemia at ICU admission and its type of correction (balanced, not-balanced, or overbalanced). **Figure S1.** Distribution of serum potassium

levels at admission in the overall population. **Figure S2.** Prevalence of dyskalemia in medical and surgical patients. **Figure S3.** Prevalence of hypokalemia according to the presence of underlying disease. **Figure S4.** Prevalence of hyperkalemia according to the presence of underlying disease. **Figure S5.** Characteristics of mild hyperkalemic patients at admission.

Acknowledgements

The authors are indebted to members of the OUTCOMEREA STUDY GROUP listed below.

Scientific Committee: Jean-François Timsit (Medical and Infectious Diseases ICU, Bichat-Claude Bernard Hospital, Paris, France; UMR 1137 Inserm –Paris Diderot university IAME, F75018, Paris); Elie Azoulay (Medical ICU, Saint Louis Hospital, Paris, France); Maité Garrouste-Orgeas (ICU, Saint-Joseph Hospital, Paris, France); Jean-Ralph Zahar (Infection Control Unit, Angers Hospital, Angers, France); Christophe Adrie (Physiology, Cochin Hospital, Paris, France); Michael Darmon (Medical ICU, Saint Etienne University Hospital, St Etienne, France); and Christophe Clec'h (ICU, Avicenne Hospital, Bobigny, and UMR 1137 Inserm –Paris Diderot university IAME, F75018, Paris, France).

Biostatistical and Information System Expertise: Jean-François Timsit (Medical and Infectious Diseases ICU, Bichat-Claude Bernard Hospital, Paris, France; UMR 1137 Inserm –Paris Diderot university IAME, F75018, Paris); Corinne Alberti (Medical Computer Sciences and Biostatistics Department, Robert Debré Hospital, Paris, France); Adrien François (Integrated Research Center U823, Grenoble, France); Aurélien Vesin (OUTCOMEREA organization and Integrated Research Center U823, Grenoble, France); Stephane Ruckly (OUTCOMEREA organization and Inserm UMR 1137 IAME, F75018, Paris); Sébastien Bailly (Grenoble university hospital Inserm UMR 1137 IAME, F75018, Paris) and Christophe Clec'h (ICU, Avicenne Hospital, Bobigny, and Inserm UMR 1137 IAME, F75018, Paris, France); Frederik Lecorre (Supelec, France); Didier Nakache (Conservatoire National des Arts et Métiers, Paris, France); and Aurélien Vannieuwenhuyze (Tourcoing, France).

Investigators of the OUTCOMEREA Database: Christophe Adrie (ICU, CH Melun, and Physiology, Cochin Hospital, Paris, France); Carole Agasse (medical ICU, university hospital Nantes, France); Bernard Allaouchiche (ICU, Pierre benite Hospital, Lyon, France); Olivier Andreumont (ICU, Bichat Hospital, Paris, France); Pascal Andreu (CHU Dijon, Dijon, France); Laurent Argaud (Medical ICU, Hospices Civils de Lyon, Lyon, France); Claire Ara-Somohano (Medical ICU, University Hospital, Grenoble, France); Elie Azoulay (Medical ICU, Saint Louis Hospital, Paris, France); Francois Barbier (medical-surgical ICU, Orleans, France); Jean-Pierre Bedos (ICU, Versailles Hospital, Versailles, France); Jérôme Bedel (ICU, Versailles Hospital, Versailles, France); Julien Bohé (ICU, Hôpital Pierre Benite, Lyon France); Lila Bouadma (ICU, Bichat Hospital, Paris, France); Noel Brule (medical ICU, university hospital Nantes, France); Cédric Brétonnière (medical ICU, university hospital Nantes, France); Christine Cheval (ICU, Hyeres Hospital, Hyeres, France); Christophe Clec'h (ICU, Avicenne Hospital, Bobigny, France); Elisabeth Coupez (ICU, G Montpied Hospital, Clermont-Ferrand, France); Michael Darmon (ICU, Saint Etienne Hospital, Saint Etienne, France); Etienne de Montmollin (ICU, Delafontaine Hospital, Saint Denis), Loa Dopeux (ICU, G Montpied Hospital, Clermont-Ferrand, France); Anne-Sylvie Dumenil (Antoine Béclère Hospital, Clamart, France); Claire Dupuis (Bichat hospital and UMR 1137 Inserm –Paris Diderot university IAME, F75018, Paris, France); Jean-Marc Forel (AP HM, Medical ICU, Hôpital Nord Marseille), Marc Gannier (la Timone hospital, Marseille, France), Charlotte Garret (medical ICU, university hospital Nantes, France); Antoine Gros (ICU, Versailles Hospital, Versailles, France), Akim Haouache (Surgical ICU, H Mondor Hospital, Creteil, France); Romain Hernu (Medical ICU, Hospices Civils de Lyon, Lyon, France); Samir Jamali (ICU, Dourdan, Dourdan Hospital, Dourdan, France); Sébastien Jochmans (ICU, CH Melun); Jean-Baptiste Joffredo (ICU, G Montpied Hospital, Clermont-Ferrand, France); Hatem Khaled (ICU, Cayenne General Hospital, Cayenne, France); Guillaume Lacave (ICU, Versailles Hospital, Versailles, France), Alexandre Lautrette (ICU, G Montpied Hospital, Clermont-Ferrand, France); Virginie Lemiale (Medical ICU, Saint Louis Hospital, Paris, France); Mathilde Lermuzeaux (ICU, Bichat Hospital, Paris, France), Guillaume Marcotte (Surgical ICU, Hospices Civils de Lyon, Lyon, France); Eric Le Miere (ICU, Louis Mourier Hospital, Colombes, France); Jordane Lebut (ICU, Bichat Hospital, Paris, France); Maxime Lugosi (Medical ICU, University Hospital Grenoble, Grenoble, France); Eric Magalhaes (ICU, Bichat Hospital, Paris, France), Sibylle Merceron (ICU, Versailles Hospital, Versailles, France), Bruno Mourvillier (ICU, Bichat Hospital, Paris, France); Benoît Misset (ICU, Saint-Joseph Hospital, Paris,

France); Delphine Moreau (ICU, Saint-Louis Hospital, Paris, France); Bruno Mourvillier (ICU, Bichat Hospital, Paris, France); Mathild Neuville (ICU, Bichat Hospital, Paris, France); Laurent Nicolet (medical ICU, university hospital Nantes, France); Laurent Papazian (Hopital Nord, Marseille, France); Benjamin Planquette (pulmonology ICU, George Pompidou hospital Hospital, Paris, France); Jean-Pierre Quenot Pascal Andreu (CHU Dijon, Dijon, France); Aguila Radjou (ICU, Bichat Hospital, Paris, France); Romain Sonnevillier (ICU, Bichat Hospital, Paris, France); Jean Reignier (medical ICU, university hospital Nantes, France); Bertrand Souweine (ICU, G Montpiéd Hospital, Clermont-Ferrand, France); Carole Schwebel (ICU, A Michallon Hospital, Grenoble, France); Roland Smonig (ICU, Bichat Hospital, Paris, France); Gilles Troché (ICU, Antoine Béclère Hospital, Clamart, France); Marie Thuong (ICU, Delafontaine Hospital, Saint Denis, France); Guillaume Thierry (ICU, Saint-Louis Hospital, Paris, France); Dany Toledano (ICU, Gonesse Hospital, Gonesse, France); Guillaume Van Der Meersch (Medical Surgical ICU, university hospital Avicenne), Marion Venot (Medical ICU, Saint Louis Hospital, Paris, France); Olivier Zambon (medical ICU, university hospital Nantes, France);

Study Monitors: Julien Fournier, Caroline Tournegros, Stéphanie Bagur, Mireille Adda, Vanessa Vindrieux, Sylvie de la Salle, Loïc Ferrand, Stéphane Guessens, Helene Merle, Nadira Kaddour, Boris Berthe, Samir Bekkhouche, Kaouttar Mellouk, Mélaïne Lebrazi, Carole Ouisse, Diane Maugars, Sylvie Conrozier, Igor Theodose, Manal Nouacer, Veronique Deiler, Myriam Moussa, Atika Mouaci Nassima Viguier, and Sophie Letrou.

Authors' contributions

LB, SM, JFT, LS, and SR had full access to all the data in the study and take responsibility for the integrity of the data and the accuracy of the data analysis. LB, SM, and JFT participated in the study concept and design, the interpretation of the data, and the drafting of the manuscript. All authors made contribution to the acquisition of the data and to the revision of the manuscript. The final version of the manuscript was read and approved by all the authors.

Funding

None

Availability of data and materials

All the data and material are available from ¹Outcomerea research network; Aulnay Sous Bois, 93000 France, <http://outcomerea.fr/index.php/contact>.

Ethics approval and consent to participate

According to the French law, the OUTCOMEREA database was declared to the Commission Nationale de l'Informatique et des Libertés. This study did not require individual patient consent, because it involved research on a previously developed and approved database. The institutional review board of the Rhône-Alpes-Auvergne Clinical Investigation Centers approved this study.

Consent for publication

A consent for publication was obtained for all the authors by email.

Competing interests

The authors declare that they have no competing interests.

Author details

¹UMR 1137, IAME, Université Paris Diderot, F75018 Paris, France. ²Medical and Infectious Diseases Care Unit, AP-HP, Bichat University Hospital, F75018 Paris, France. ³Service de Réanimation Médicale et des Maladies Infectieuses, Hôpital Bichat-Claude-Bernard, 46 rue Henri-Huchard, 75877 Paris Cedex 18, France. ⁴AP-HP, Pitié-Salpêtrière University Hospital, Cardiology, Paris, France. ⁵APHP, Saint-Louis University Hospital, Medical Intensive Care Unit, Paris, France. ⁶Paris-7 Paris Diderot University, Paris, France. ⁷Medical ICU, Edouard Herriot University Hospital, Lyon, France. ⁸Critical Care Medicine Unit CH Etampes-Dourdan, Etampes, France. ⁹Medical Unit, French British Hospital Institute, Levallois-Perret, France. ¹⁰Respiratory and Infectious Diseases ICU, APHM Hôpital Nord, Aix Marseille University, Marseille, France. ¹¹AP-HP, Avicenne Hospital, Intensive Care Unit, Paris, France. ¹²Medicine University, Paris 13 University, Bobigny, France. ¹³Surgical Intensive Care Unit and Lyon University Hospital, Lyon, France. ¹⁴OUTCOMEREA organization, F75018 Paris, France. ¹⁵Medical Intensive Care Unit and University Hospital Centre, Nantes, France. ¹⁶Medical Intensive Care Unit, Gabriel Montpiéd University Hospital,

Clermont-Ferrand, France. ¹⁷Medical Intensive Care Unit, Grenoble University Hospital, Grenoble 1 University, U823 La Tronche, France. ¹⁸Outcomerea research network, 93000 Aulnay-sous-Bois, France.

Received: 23 July 2019 Accepted: 20 November 2019

Published online: 19 December 2019

References

- Macdonald JE, Struthers AD. What is the optimal serum potassium level in cardiovascular patients? *J Am Coll Cardiol*. 2004;43:155–61.
- Goyal A, Spertus JA, Gosch K, et al. Serum potassium levels and mortality in acute myocardial infarction. *JAMA*. 2012;307:157–64.
- Le Gall J, Lemeshow S, Saulnier F. A new simplified acute physiology score (SAPS II) based on a European/North American multicenter study. *JAMA*. 1993;270:2957–63.
- McMahon GM, Mendu ML, Gibbons FK, et al. Association between hyperkalemia at critical care initiation and mortality. *Intensive Care Med*. 2012;38:1834–42.
- Darmon M, Timsit JF, Francais A, Nguile-Makao M, Adrie C, Cohen Y, Garrouste-Orgeas M, Goldgran-Toledano D, Dumenil AS, Jamali S, Cheval C, Allaouchiche B, Souweine B, Azoulay E. Association between hypernatraemia acquired in the ICU and mortality: a cohort study. *Nephrol Dial Transplant*. 2010;25(8):2510–5.
- Darmon M, Pichon M, Schwebel C, et al. Influence of early dysnatremia correction on survival of critically ill patients. *Shock*. 2014;41:394–9.
- Darmon M, Diconne E, Souweine B, et al. Prognostic consequences of borderline dysnatremia: pay attention to minimal serum sodium change. *Crit Care*. 2013;17:R12.
- Francais A, Vesin A, Timsit J-F. How to conduct clinical research studies using high quality-clinical databases in the critical care. *Rev Bras Ter Intensiva*. 2008;20:296–304.
- Vincent JL, Moreno R, Takala J, et al. The SOFA (Sepsis-related Organ Failure Assessment) score to describe organ dysfunction/failure. On behalf of the Working Group on Sepsis-Related Problems of the European Society of Intensive Care Medicine. *Intensive Care Med*. 1996;22:707–10.
- Knaus WA, Zimmerman JE, Wagner DP, et al. APACHE-acute physiology and chronic health evaluation: a physiologically based classification system. *Crit Care Med*. 1981;9:591–7.
- Hessels L, Hoekstra M, Mijzen LJ, et al. The relationship between serum potassium, potassium variability and in-hospital mortality in critically ill patients and a before-after analysis on the impact of computer-assisted potassium control. *Crit Care Lond Engl*. 2015;19:4.
- Levey AS, Atkins R, Coresh J, et al. Chronic kidney disease as a global public health problem: approaches and initiatives - a position statement from Kidney Disease Improving Global Outcomes. *Kidney Int*. 2007;72:247–59.
- Gennari FJ. Disorders of potassium homeostasis. *Crit Care Clin*. 2002;18:273–88.
- Henz S, Maeder MT, Huber S, et al. Influence of drugs and comorbidity on serum potassium in 15 000 consecutive hospital admissions. *Nephrol Dial Transplant*. 2008;23:3939–45.
- Gennari FJ. Hypokalemia. *N Engl J Med*. 1998;339:451–8.
- Kette F, Weil MH, Gazmuri RJ, et al. Intramyocardial hypercarbic acidosis during cardiac arrest and resuscitation. *Crit Care Med*. 1993;21:901–6.
- von Planta I, Weil MH, von Planta M, et al. Hypercarbic acidosis reduces cardiac resuscitability. *Crit Care Med*. 1991;19:1177–82.
- Kuipers S, Klein Klouwenberg PMC, Cremer OL. Incidence, risk factors and outcomes of new-onset atrial fibrillation in patients with sepsis: a systematic review. *Crit Care Lond Engl*. 2014;18:688.
- van den Berghe G, Wouters P, Weekers F, et al. Intensive insulin therapy in critically ill patients. *N Engl J Med*. 2001;345:1359–67.
- Van den Berghe G, Wilmer A, Hermans G, et al. Intensive insulin therapy in the medical ICU. *N Engl J Med*. 2006;354:449–61.
- NICE-SUGAR Study Investigators, Finfer S, Chittock DR, et al. Intensive versus conventional glucose control in critically ill patients. *N Engl J Med*. 2009;360:1283–97.

Publisher's Note

Springer Nature remains neutral with regard to jurisdictional claims in published maps and institutional affiliations.