



HAL
open science

Geomorphological modelling and mapping of the Peru-Chile Trench by GMT

Polina Lemenkova

► **To cite this version:**

Polina Lemenkova. Geomorphological modelling and mapping of the Peru-Chile Trench by GMT. Polish Cartographical Review, 2019, 51 (4), pp.181-194. 10.2478/pcr-2019-0015 . hal-02464865

HAL Id: hal-02464865

<https://hal.science/hal-02464865>

Submitted on 6 Feb 2020

HAL is a multi-disciplinary open access archive for the deposit and dissemination of scientific research documents, whether they are published or not. The documents may come from teaching and research institutions in France or abroad, or from public or private research centers.

L'archive ouverte pluridisciplinaire **HAL**, est destinée au dépôt et à la diffusion de documents scientifiques de niveau recherche, publiés ou non, émanant des établissements d'enseignement et de recherche français ou étrangers, des laboratoires publics ou privés.



Distributed under a Creative Commons Attribution - NonCommercial 4.0 International License

Geomorphological modelling and mapping of the Peru-Chile Trench by GMT

Abstract. The author presents a geospatial analysis of the Peru-Chile Trench located in the South Pacific Ocean by the Generic Mapping Tool (GMT) scripting toolset used to process and model data sets. The study goal is to perform geomorphological modelling by the comparison of two segments of the trench located in northern (Peruvian) and southern (Chilean) parts. The aim of the study is to perform automatic digitizing profiles using GMT and several scripting modules. Orthogonal cross-section profiles transecting the trench in a perpendicular direction were automatically digitized, and the profiles visualized and compared. The profiles show variations in the geomorphology of the trench in the northern and southern segments. To visualize geological and geophysical settings, a set of the thematic maps was visualized by GMT modules: free-air gravity anomaly, geoid, geology and bathymetry. The results of the descriptive statistical analysis of the bathymetry in both segments show that the most frequent depths for the Peruvian segment of the Peru-Chile Trench range from -4,000 to -4,200 (827 recorded samples) versus the range of -4,500 to -4,700 m for the Peruvian segment (1,410 samples). The Peruvian segment of the trench is deeper and its geomorphology steeper with abrupt slopes compared to the Chilean segment. A comparison of the data distribution for both segments gives the following results. The Peruvian segment has the majority of data (23%) reaching 1,410 (-4,500 m to -4,700 m). This peak shows a steep pattern in data distribution, while other data in the neighbouring diapason are significantly lower: 559 (-4,700 m to -5,000 m) and 807 (-4,200 m to -4,400 m). The Chilean segment has more unified data distribution for depths of -6,000 m to -7,000 m. This paper presents GMT workflow for the cartographic automatic modelling and mapping deep-sea trench geomorphology.

Keywords: GMT, mapping, Peru-Chile Trench, submarine geomorphology

1. Introduction

The geographic study area is located in the Peru-Chile Trench, also known as the Atacama Trench (C. Gambi et al. 2003). It is the longest hadal trench of the Pacific Ocean, stretching 5,900 km from Ecuador to Chile: 6° 00' S, 81° 50' W to 39° 00' S, 75° 00' W (L.R. Fisher and R.W. Raitt 1962; fig. 1). Considering its total length, the trench covers an area of ca. 590,000 km² (M.V. Angel 1982). The Peru-Chile Trench is narrower than other trenches of the Pacific Ocean (64 km in width). It is the deepest trench of the South Pacific Ocean, reaching a maximal depth of 8,065 m.

The Peru-Chile Trench was formed by the subduction of the Nazca and Antarctic plates beneath the South American Plate. As can be

understood by its name and location, the trench can be logically divided into two parts: Peruvian and Chilean. The Chilean part is longer than the Peruvian, stretching in a north–south direction along 4,300 km, from -18° S to -56° S. Due to the specific geologic, geotectonic, geomorphic and climatic settings, the region of the Peru-Chile Trench is exposed to a wide variety of hazardous processes: earthquakes; local tsunamis, generated between the Peru-Chile Trench and the Chilean coast; volcanism, and continent-specific geological hazards: floods, landslides and mass movements, as briefly discussed below. The volcanism intensity can be illustrated by the recently documented tsunamigenic giant earthquakes: Valdivia, the largest ever recorded ($M_w = 9.5$), 1960; and Maule ($M_w = 8.8$), 2010 (E. Contreras-Reyes et al. 2010).

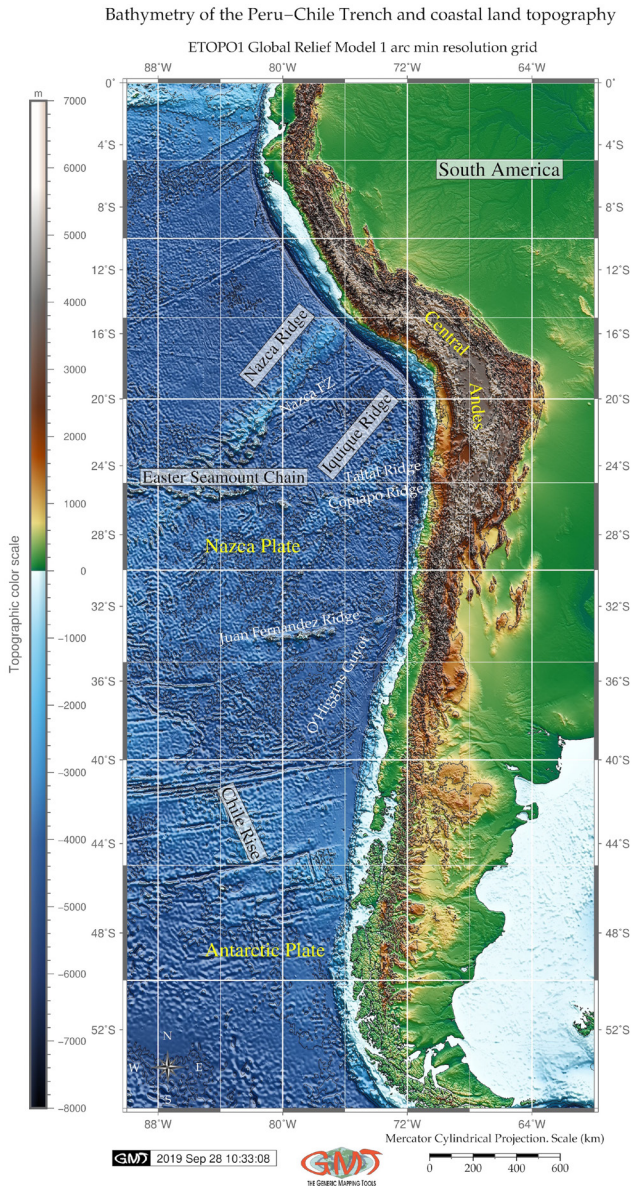


Fig. 1. Bathymetric map of the Peru–Chile Trench area.
Topographic base map: ETOPO1

The environmental setting of the Peru–Chile Trench is considered as eutrophic with high biological productivity and organic matter on the seafloor (N.C. Lacey et al. 2016). The uniqueness of the biodiversity of the Peru–Chile Trench is notable due to high concentrations

of nutritionally rich organic matter at a depth of 7,800 m, and high nematode densities (C. Gambi et al. 2003).

2. Geographic settings

2.1. Bathymetry

The continental margin of Southern Chile between 36° S and 39° S has an intermediate shelf of 20–30 km in width (D. Völker et al. 2008). The slope has an incline of 2.5–4.0 degrees with irregularities: plateaus, slope basins and escarpments as steep as 10 degrees. The South Chilean slope is dissected by meandering submarine canyons connected to the large rivers off the continent.

The Biobío Canyon ends in submarine fans where it enters the trench (T.M. Thornburg and L.D. Kulm 1990). A sinuous axial channel is observed in the Chilean Trench (D. Völker et al. 2008).

It originates from the Chacao Canyon at 41° S, connected to the largest submarine canyon systems of the continental margin (Calle-Calle, Tolten, Biobío and San Antonio Canyons). The Nazca Plate forms the oceanward boundary of the Peru–Chile Trench; it elevates to ca. 100–400 m above the trench and shows parallel geological lineaments. The Nazca Plate has chains of 2-km-high seamounts that are aligned quasi-parallel to the subduction of the Valdivia and Mocha Fracture Zones (E. Contreras-Reyes et al. 2013; fig. 2). Details of the complexity of the oceanic fracture zones is discussed by E. Contreras-Reyes et al. (2008).

2.2. Tectonics

The Peru–Chile Trench was formed by the subduction of the oceanic crust of the Nazca

Plate and the Antarctic tectonic plates beneath the South American Plate. The convergence rate of the Nazca Plate is 6.7–6.9 cm/year (J. Geersen 2019). The Mocha crustal block, configured by the Peru-Chile Trench, lies on the Nazca Plate (E. Contreras-Reyes et al. 2010). The complex processes of the tectonic plate subduction in the historical context of the evolution of the Nazca and Antarctic plates are described in relevant works (L.F. Sarmiento-Rojas et al. 2006; V.C. Manea et al. 2017; S.C. Cande and R.B. Leslie, 1986; W.P. Schellart et al. 2006). Central Andes is a typical example of the convergent continental margin where the forearc reflects the interaction between the subducting and overriding plates (A.E. Mather et al 2014). The interaction between the Chile Ridge and the continental margin determines the Taitao Triple Junction (46–47° S). The Nazca Plate is subducted beneath the South American Plate, while the Antarctic Plate subducts along an easterly direction (A. Cecioni and V. Pined 2010). The Nazca Plate, adjacent to the Peru-Chile Trench, is located at the boundary of the East Pacific Rise, the fastest-spreading ocean ridge on Earth. It is bordered by the Easter microplate and the Juan Fernandez microplate. These include three major seamount chains: Easter Seamount Chain, Nazca Ridge, and Carnegie Ridge (J.P. Bello-González et al. 2018). The earthquake of 1960 was due to the subduction of the Mocha fracture zone, which caused the rupture of the Nazca Plate (I.L. Cifuentes 1989).

2.3. Geomorphology

The main geomorphic structural units in Chile are Coastal Cordillera, Central Depression and Andean Cordillera. The distinguishing

Geological and tectonic setting of the Peru–Chile Trench region

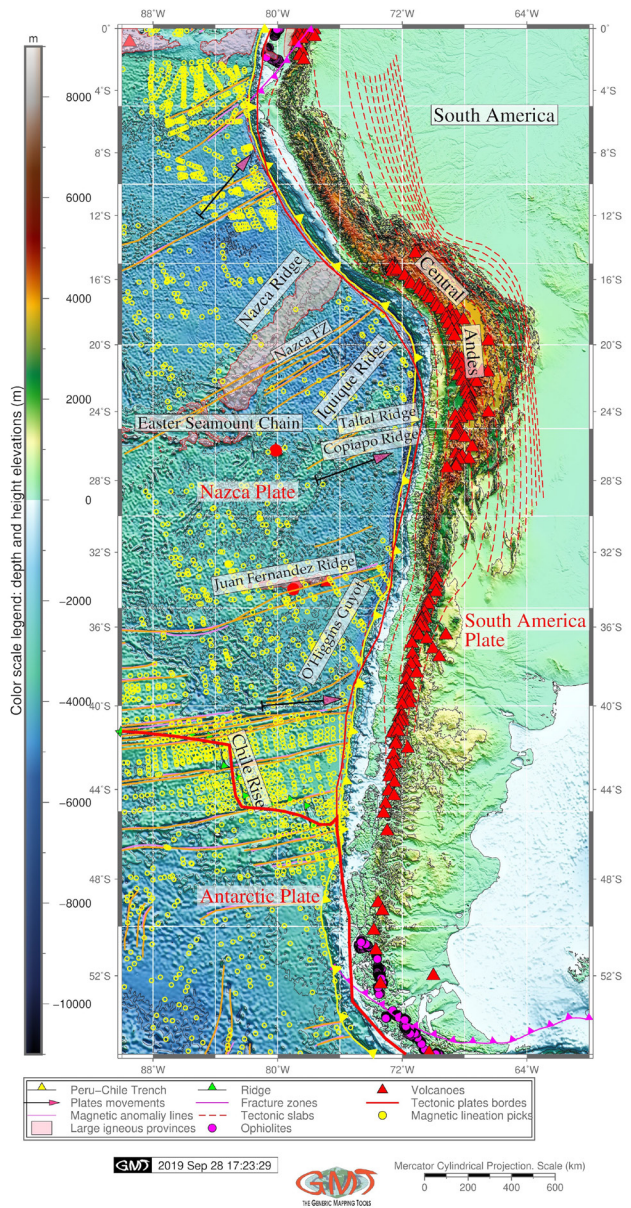


Fig. 2. Geologic settings map of the Peru-Chile Trench area

features of the Peru-Chile Trench include submarine ridges, such as Juan Fernández, Copiapó, Taltal, Nazca, Iquique, O’Higgins Guyot and Eastern Seamount Chain (fig. 2).

The Iquique Ridge is composed of several seamounts surrounded by a shallow seafloor,

swelling up to 250 km wide (E. Contreras-Reyes, D. Carrizo 2011; see fig. 1). The geomorphology of the subducted slab in the Peru-Chile Trench region changes from flat to steep along its path beneath the Andes. The region of the Juan Fernandez Ridge subduction beneath the continental margin (27–33° S) correlates with a flat-slab subduction zone (A. Cecioni, V. Pineda 2010). The flat-slab subduction zone is located northwards of the Taitao Triple Junction (J.S. Behrmann et al. 1994). The geomorphological features of the Chilean Andes are characterized by transverse river valleys separating Coastal from Andean Cordillera (27–33° S). Southwards of 33° S, geologic and geomorphic features in the Peru-Chile Trench change due to the dip of the subduction zone (A. Cecioni, V. Pineda 2010).

2.4. Sedimentation

The system of giant landslides, rock avalanches and multiple rotational failures is located along the coastline within a distance of ca. 650 km and contributes to the sedimentation of the Peru-Chile Trench. There are over 60 large landslides located on the Coastal Cordillera and Atacama Desert adjacent to the Peru-Chile Trench (A.E. Mather et al. 2014). Earthquakes increase sediment thickness as well; for example, in the region of the 1960 earthquake, sediment thickness ranged from ca. 300 to 700 m (R.A. Prince, L.D. Kulm 1975; D. Divins 2003).

Over 50% of the world's deep-sea trenches are classified as sediment-starved or partly sediment-filled (J. Geersen et al. 2018). The northern part of the Peru-Chile Trench (Peru), is 'sediment-starved', while the southern part (Chile) is partly 'sediment-filled' (J. Geersen 2019). In response to the sediment loading at the trench, downward deflection plays a crucial role in determining its inlet sediment capacity. Weak and hot oceanic plates show more downward deflection at the trench due to sediment loading compared to the old oceanic plates (E. Contreras-Reyes, A. Osses 2010). A weak oceanic plate allows more space for sediment subduction. For the Peru-Chile Trench, larger downward deflection is found along the Chiloé segment (E. Contreras-Reyes et al. 2013). According to the sedimentation conditions, the

Peru-Chile Trench can be divided into two main provinces: the main sediment-free province (8–32° S) and the sedimentary province (33–57° S; see D.E. Hayes 1966). The margin off Isla de Chiloé is characterized by a largely sedimented segment of the Peru-Chile Trench caused by the turbidite deposits (E. Contreras-Reyes et al. 2007). The region close to the Taitao Triple Junction is nearly devoid of sediment and displays rapid narrowing of the forearc region (S.C. Cande et al. 1987).

3. Materials and methods

The goal of the current study is to compare two segments of the trench located in northern (Peruvian) and southern (Chilean) parts through geomorphological modelling by cross-section profiles. The study aim is to perform automatic digitizing of the profiles using GMT and several scripting modules. The orthogonal cross-section profiles transecting the trench in a perpendicular direction were automatically digitized, and the profiles visualized and compared. There are documented attempts to study the Peru-Chile Trench by drawing vertical profiles to study the variability of the data along the transects (J.M. Zeigler et al. 1957). However, along with the rapid development of advanced technologies in IT and the improvement of data analysis algorithms and automatization, approaches to studying geomorphology have developed correspondingly. The application of advanced scripting towards data modelling (P. Lemenkova 2019b) enables complex analysis of the bathymetric data, advance mapping, automated digitizing and visualization to be performed. This study presents the methodological experience of using Generic Mapping Tools (GMT) for processing, modelling and mapping geodata, aimed at visualizing the geomorphology of the Peru-Chile Trench.

The methodology is based on GMT (P. Wessel and W.H.F. Smith 1998; P. Wessel et al. 2013). A principal strategy of GMT, and its fundamental difference from classical GIS software, lies in its scripting approach. Thus, to produce a map, to visualize geodata and perform modelling, a cartographer needs to write a code similar to programming lines in principle (as demonstrated below). A combined sequence of such codes creates a script which facilitates creating maps or graphs.

Since the precision of the geodata is an important issue in cartographic mapping, as discussed in previous works (e.g. for bathymetric data (W.H.F. Smith 1993) and for gravity (P. Wessel, A.B. Watts 1988)), high quality raster grids were selected as a background for mapping: ETOPO1 (1 min resolution global data set) and gravity raster grid public data sets from Scripps Institution of Oceanography (SIO).

ETOPO1 is based on the horizontal datum WGS 84 geographic, with bathymetry estimated from satellite altimetry. The vertical uncertainty of the ETOPO1 elevations exceeds the differences between the vertical datums near the sea level (< 1 m), which makes this data set reliable. Mapping and visualization of the raster grids was based on the existing algorithms of GMT modules used for current research. The most important codes are explained below in the relevant subsections.

3.1. Bathymetric and geologic mapping

The technical methodology for the thematic mapping is based on using a GMT scripting approach where each line of the code is responsible for adding certain cartographic elements on the map or for manipulations with the raster data. Thus, the bathymetric map (fig. 1) is made using the following sequence of the most essential GMT codes:

Step-1. Extracting a subset of ETOPO1m for the Peru-Chile area. Format: -R0/360/-90/90; here, 0°00 S to -55°00 S, 90° W to 60° W; through 'grdcut' GMT module: `grdcut earth_relief_01m.grd -R270/300/-55/0 -Gpct_relief.nc`

Step-2. Making the colour palette is done using the following code: `gmt makecpt -Cgeo.cpt -V -T-8000/7000 > pctocean.cpt`

Step-3. Visualizing the raster image is done by the GMT 'grdimage' module through this code: `gmt grdimage pct_relief.nc -Cpctocean.cpt -R270/300/-55/0 -JM4.5i -P -I+a15+ne0.75 -Xc -K > $ps`

Step-4. Adding shorelines was done using GMT 'grdcontour' module: `gmt grdcontour pct_relief.nc -R -J -C1000 -W0.2p -O -K >> $ps`

Likewise, adding cartographic elements on the map is done through the GMT module 'psbasemap': grid with major and minor lines, scale, directional rose, colour legend. Adding annotations is done through the GMT module

'pstext'. The geological lineaments are added using GMT module 'psxy' as in the following examples:

```
gmt psxy -R -J ophiolites.gmt -Sc0.2c -Gmagenta -Wthinnest -O -K >> $ps
gmt psxy -R -J volcanoes.gmt -St0.4c -Gred -Wthinnest -O -K >> $ps
gmt psxy -R -J ridge.gmt -Sf0.5c/0.2c+I+t -Wthinnest,black -Ggreen -O -K >> $ps
```

3.2. Geoid modelling

The modelling geoid map (fig. 3) is based on the fundamental principle of the geoid, which is the equipotential surface of the Earth's gravity field that best fits the undisturbed mean sea level (F.W. Gauss 1828).

In other words, the geoid model shows the level surface of the Earth's gravity field that can be taken as a reference for the standardized elevation height systems into a global system. The geoid was modelled using the following GMT key sequence of codes stepwise:

Step-1. A colour palette table from the grid raster is generated using the following code:

```
gmt grd2cpt geoid.egm96.grd -Crainbow > geoid.cpt
```

Step-2. A geoid image with shading is generated at the 2nd step:

```
gmt grdimage geoid.egm96.grd -I+a45+nt1 -R270/300/-55/0 -JM4.5i -Cgeoid.cpt -P -K > $ps
```

Here the 'geoid.egm96.grd' is an input file; '-I+a45' shows the illumination of the grid; '-R270/300/-55/' shows the coordinates squares of the taken area in W-E-S-N direction; '-JM4.5i' means a Mercator projection and the dimensions of the map of 4.5 inches; '-Cgeoid.cpt' means the colour palette taken; '-P' means a portrait orientation of the map; '-K' means a continuation of the codes.

Step-3. The base map elements (grid, title, coastlines) are added:

```
gmt pscoast -R -J -P -V -W0.25p -Df -B+!Geoid regional model: Peru-Chile Trench area" -Bxg-3f4a4 -Byg3f2a4 -O -K >> $ps
```

In this code, the meaning of '-Bxg3f4a4 -Byg3f2a4' is the grid density (major lines every 3, minor lines every 4, annotations every 4 for the latitude coordinates, with the same system for longitude). '-W0.25p' means the thickness of the plotted lines (here: very thin ones, 0.25 points).

Geoid regional model: Peru–Chile Trench area

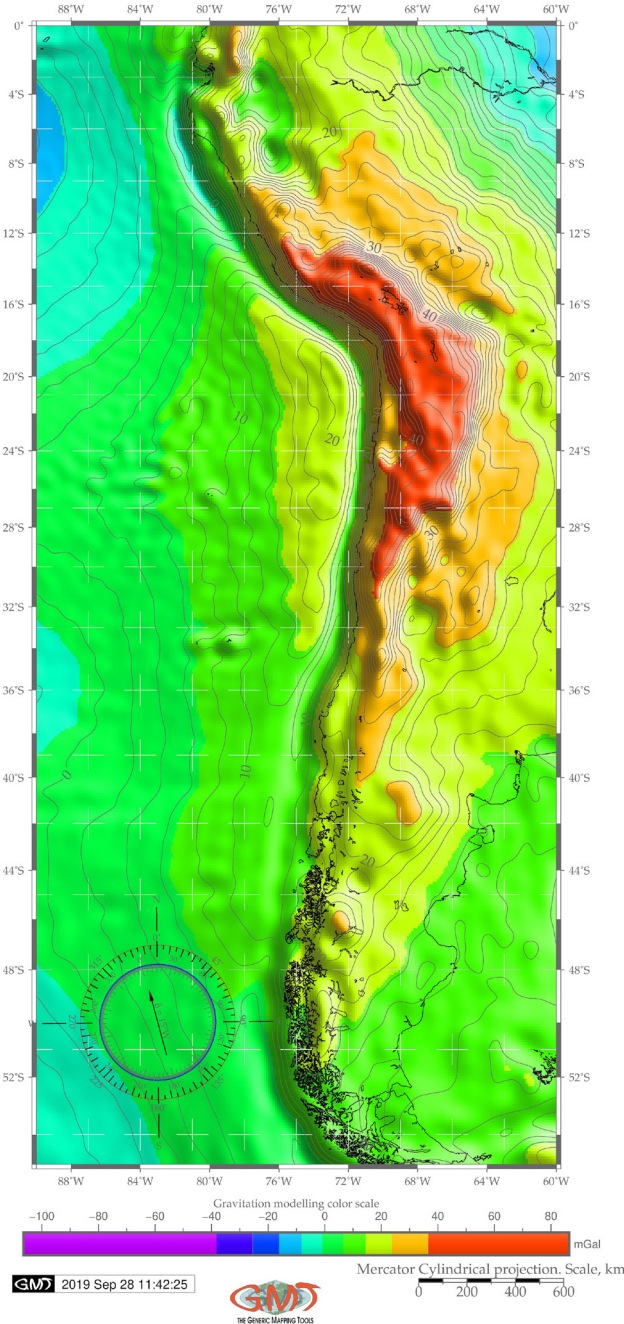


Fig. 3. Geoid model map of the Peru–Chile Trench area

Step-4. The geoid contour is added through the following code snippet:

```
gmt grdcontour geoid.egm96.
grd -R -J -C2 -A5 -Wthinnest,dimgray -O -K >> $ps
```

Here 'geoid.egm96.grd' is the input file from which the data were taken; '-Wthinnest, dimgray' is the aesthetics of the lines; '-A5' means that the lines are annotated every 5th one.

3.3. Free-air gravity modelling

A combination of several GMT modules is used for mapping geomorphological profiles based on the methodology of the GMT (P. Wessel et al. 2019). As noted (H. Amin et al. 2019), the Earth's gravity field is subject to temporal variations. Therefore, the geoid model is not a static surface. Temporal changes in the Earth's gravity field are attributed to the movement of the water masses within the Earth's thin fluid envelope that can be revealed using geodetic modelling (J.Wahr et al. 1998). Hence, the sea level change and mass redistribution affect the equipotential surfaces in the Earth's gravity field. Therefore, the marine free-air gravity modelling should be based on the most updated available grid data. Current research relies on such existing raster data sets (W.H.F. Smith, D.T. Sandwell 1995; D.T. Sandwell et al., 2014) visualized as gravity models (fig. 4). The technical methodology of the free-air modelling for the Peru–Chile Trench area and western South America is based on the following GMT codes (the most important codes have been selected and the minor code lines used mainly for cartographic aesthetics were skipped):

Step-1. The subset of the img file in Mercator projection is extracted using the following code: img2grd

grav_27.1.img -R270/300/-55/0 -GgravPCT.grd -T1 -I1 -E -S0.1 -V

Step-2. A colour palette table from the grid is generated for the gravity modelling: gmt grd2cpt gravPCT.grd -Crainbow > gravPCT.cpt

Step-3. The gravity image with shading is visualized through this code: gmt grdimage gravpCT.grd -I+a45+nt1 -R270/300/-55/0 -JM4.5i -CgravPCT.cpt -P -K > \$ps

Step-4. Some base map parameters and elements are added (grid, title, coastline): gmt pscoast -R -J -P -V -W0.25p -Df -B+t"Marine free-air gravity anomaly for the Peru-Chile Trench area" -Bxg3f2a4 -Byg3f2a4 -O -K >> \$ps

Step-5. A colour legend is added through this code: gmt psscale -R -J -CgravPCT.cpt -DjBC+o0.0c/-2.0c+w12c/0.5c+h -Baf+l"Marine free-air gravity anomaly colour scale" -l0.2 -By+lmGal -O -K >> \$ps

Here, the '-DjBC+o0.0c/-2.0c+w12c/0.5c+h' snippet shows the bottom centre alignment, '0.0c/-2.0c' offset on 'y' scale 2 cm to the left, 'w12c/0.5c+h' means a 12 cm height and 0.5 cm the width of the colour legend, and 'h' means horizontal stretching (that is, the legend is placed below the main map). The output free-air marine gravity map of the Peru-Chile Trench region is visualized in figure 4.

3.4. Automated digitizing of the profiles

Before the computer era, manual visualization of the profiles was the only possibility for geoscientists to model geomorphic features, as presented, for example, in J.M. Zeigler et al. (1957) who studied the Peru-Chile region by profiling, and using the methods available at that time.

The rapid development of the computerization in geosciences, together with machine learning tools, presented the possibility of semi-automatically digitizing bathymetric isolines in ocean topographic maps. Experience of auto-

Marine free-air gravity anomaly for the Peru-Chile Trench area

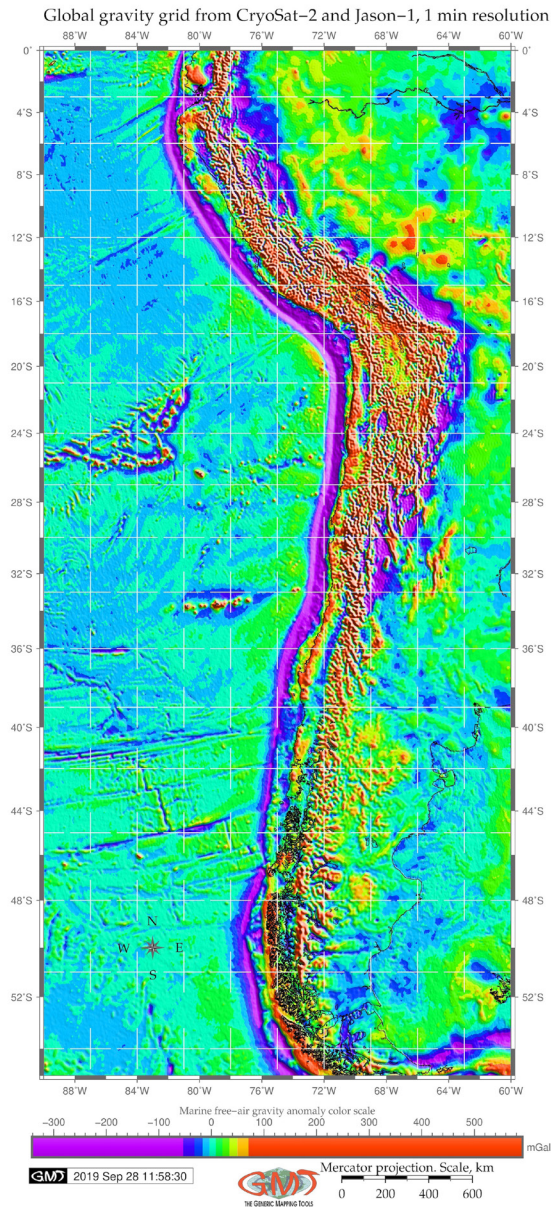


Fig. 4. Gravimetry model map of the Peru-Chile Trench area

matization is reported by H.W. Schenke, P. Le-menkova (2008) in their research on converting raster bitmap images to vector lines. The current study presents a more advanced step in cartographic automatization using the metho-

Cross-sectional profiles of the Peru–Chile Trench on two selected segments

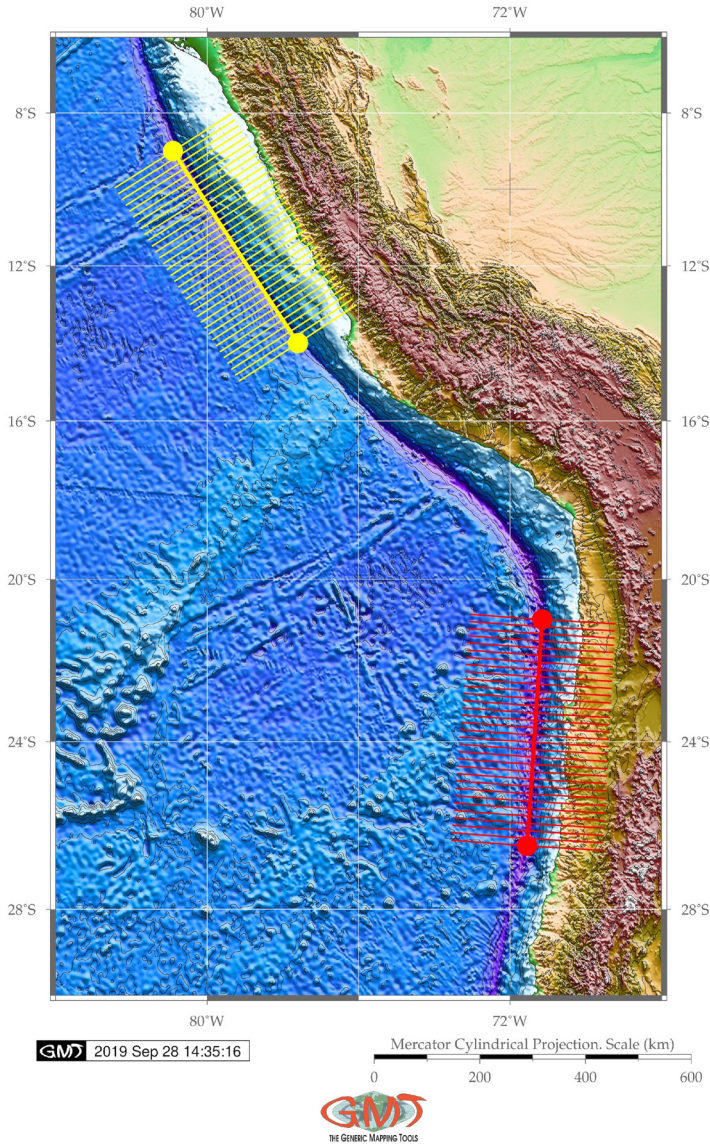


Fig. 5. Two segments with digitized profiles: Peruvian (north) and Chilean (south)

dology of GMT (P. Wessel, W.H.F. Smith 2018). The principle approach consists of automatic machine-based digitizing of the profiles, then deriving attribute tables for xy coordinates and z values (depths) for each sample point. Technically, the GMT code for automatic digitizing of the Peru-Chile Trench is as follows:

Step-1. Two points are selected by the coordinated (here: along the Peruvian segment) and saved to the table (here: trenchPCTn.txt) cat << EOF > trenchPCTn.txt 279.1 -9.0 282.4 -14.0 EOF
 Step-2. The line is plotted using this code: gmt psxy -Rpct_relief.nc -J -W2p,yellow trenchPCTn.txt -O -K >> \$ps

Step-3. The points (first and last ones) are visualized: `gmt psxy -R -J -Sc0.15i -Gyellow trenchPCTn.txt -O -K >> $ps`

Step-4. The cross-track profiles 400 km long, spaced 20 km apart, sampled every 2 km are generated: `gmt grdtrack trenchPCTn.txt -Gpct_relief.nc -C400k/2k/20k+v -Sm+sstackPCTn.txt > tablePCTn.txt gmt psxy -R -J -Wthin,yellow tablePCTn.txt -O -K >> $ps`

Step-5. Upper/lower values encountered as an envelope are shown: `gmt convert stackPCTn.txt -o0,5 > envPCTn.txt gmt convert stackPCTn.txt -o0,6 -l -T >> envPCTn.txt`

After that the profiles are automatically digitized as presented in figure 5. The red line shows the Chilean (southern) segment, the yellow line shows the Peruvian (northern) segment. The table for the statistical analysis of the frequency of depths is then analyzed in the following step.

3.5. Statistical analysis of the profiles through histograms

The statistical analysis applied specifically for the hadal trenches comprises a vast variety of methods and approaches. In this research, the histograms were selected to show the frequency of the data distribution and to visualize the repeatability of the maximal depths for the two segments of the Peru–Chile Trench. Technically, the methodology of the histogram plotting is summarized by the following code: `gmt pshistogram tablePCTn.txt -i4 -R-7000/6/0/25 -JX4.8i/2.4i Bpxg1000a1000f100+! "Bathymetry (m)" -Bpyg5a5f2.5+! "Frequency" +u % " -Bsyg2.5 -BWSne+! "Histogram of the bathymetry across Peruvian (A) segment" +gsnow1 -Glightsteel-blue1 -D+f7p,Times-Roman,black -L0.1p,dimgray -Z1 -W250 -N0+pred -N1+pgreen -N2+pblue -K > $ps`

Here, '-JX4.8i/2.4i' shows the dimension of the plotted graph, 'tablePCTn.txt' is the source data table from which the columns are taken. This table is generated automatically during the previous step by the GMT automatic digitizing profiles. Using data from this table, the histogram bins are then calculated and plotted. The 'echo' Unix program is used to add selected annotations: `echo "-6700 22.5 A" | gmt pstext -R -J -F+jBL+f15p,black -Gfloralwhite -W0.5p -O -K >> $ps`

4. Results

In this study, GMT-based automatic digitizing was used to visualize geomorphic variations of the Peru-Chile Trench in two different parts: Peruvian and Chilean. Furthermore, gravitational and geoid modelling, bathymetric and geologic mapping were performed using sequential coding of the GMT modules, as is briefly discussed in the 'Materials and methods- section'. A GMT-based statistical data assessment for the geomorphic variations of the Peru-Chile Trench is presented as visualized histograms. The workflow can be implemented into similar future works for data analysis aimed at the submarine geomorphic modelling of the hadal trenches.

Findings in the automatic digitizing of the transect profiles, visualized as two segments (fig. 6) are as follows: the Chilean trench's geomorphology has deeper bathymetry and steeper gradient slope on the Nazca Plate (fig. 6A); on the contrary, the Peruvian segment of the trench (fig. 6B, below) demonstrates a gentler landform on the oceanward side. The comparison of the histograms on bathymetry in both segments shows that the Peruvian segment has shallower depths with the maximal reaching -6,500 m, while the Chilean segment reaches -7,800 m in depth (fig. 7). The frequency of the depth records shows the following results: the Chilean segment has more unified data distribution for the depth range of -6,000 m to -7,000 m with the following number of sample points: 86, 88, 88, 72. For the same depth diapason, the Peruvian part has 56 and 84 samples, respectively. A comparison of the highest frequency of the data for both segments shows: the Peruvian segment has the majority of the data (23%) reaching 1,410 samples (-4,500 m to -4,700 m are the most frequent values for the Peruvian segment of the trench). It shows a peak of all data with a very steep pattern in data distribution. Other data in the neighbouring diapason are significantly lower: 559 samples (-4,700 to -5,000 m) and 807 (-4,200 to -4,400 m) for the Peruvian segment.

At the same time, the Chilean segment has more even data distribution. Taking a look at the same data range: only 205 samples for the range -4,700 m to -5,000 m (versus 559 for the Peruvian segment); 731 for the range of -4,200 m to -4,400 m (versus 807 for the Peru-

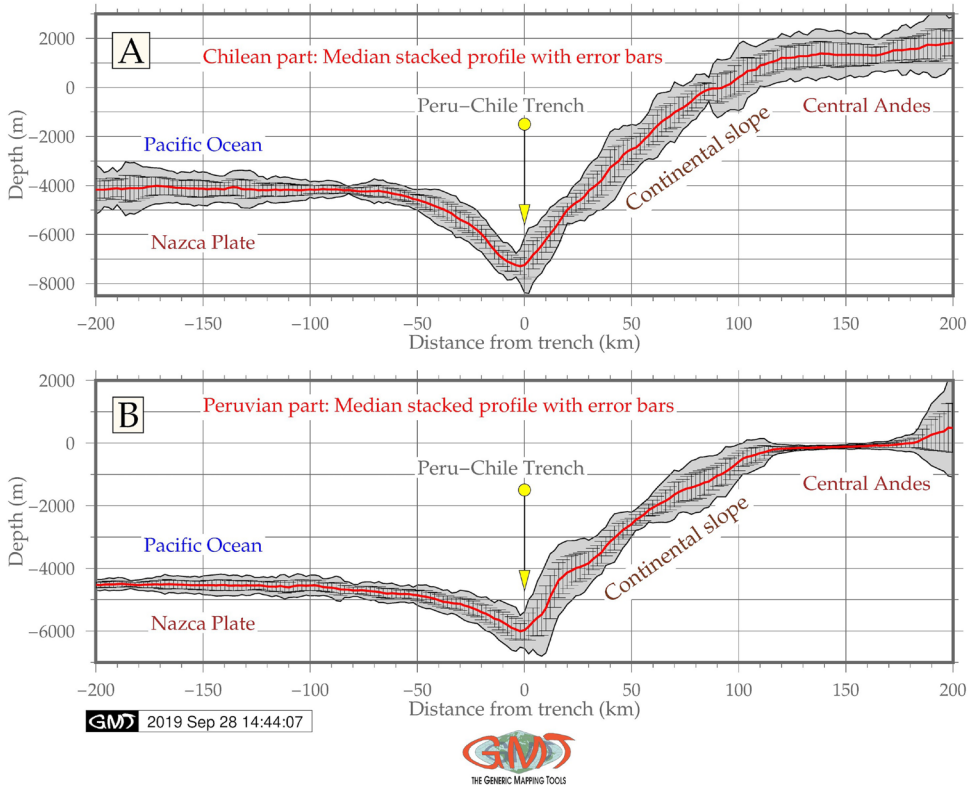


Fig. 6. Automatically digitized profiles: GMT-based model

vian segment); 317 for the range of -4,500 m to -4,700 m (versus 1,410 in the Peruvian segment, which is the most frequent, as already noted). On the contrary, the most frequent depth for the Peruvian segment of the Peru-Chile Trench is a range from -4,000 m to -4,200 m (827 recorded samples) versus a range of -4,500 m to -4,700 m for the Peruvian segment (1,410 recorded samples). This demonstrates that the Peruvian (northern) segment of the Peru-Chile Trench is generally deeper and the geomorphology is steeper with abrupt slopes (fig. 6) compared to the Chilean segment of the trench.

5. Conclusions

The submarine geomorphology of the hadal trenches, the unique structures of the ocean's seafloor, can be influenced by diverse factors affecting its formation, dynamics, migration,

location within the tectonic zones and environmental relationships (H.A. Stewart, A.J. Jamieson 2018; P. Lemenkova, 2018a; M. Yoshida 2017; A. Yang, Y. Fu 2018; P. Lemenkova, 2018b). Using advanced methods of data analysis, software and scripting instruments significantly increases the precision, reliability and quality of the Earth data modelling. Application of programming languages and statistical algorithms for marine geological data processing are published in relevant works: P. Lemenkova 2019a, P. Lemenkova 2019c, P. Lemenkova 2019d, P. Lemenkova 2019e. Similarly, using a GMT advanced scripting toolset for the cartographic modelling, as demonstrated in this paper, increases the speed of digitizing through the automatization of the mapping routine.

Increasing developments in ocean resource exploration caused concerns regarding deep-sea ocean areas. The geomorphology of the ocean trenches is formed as a result of complex

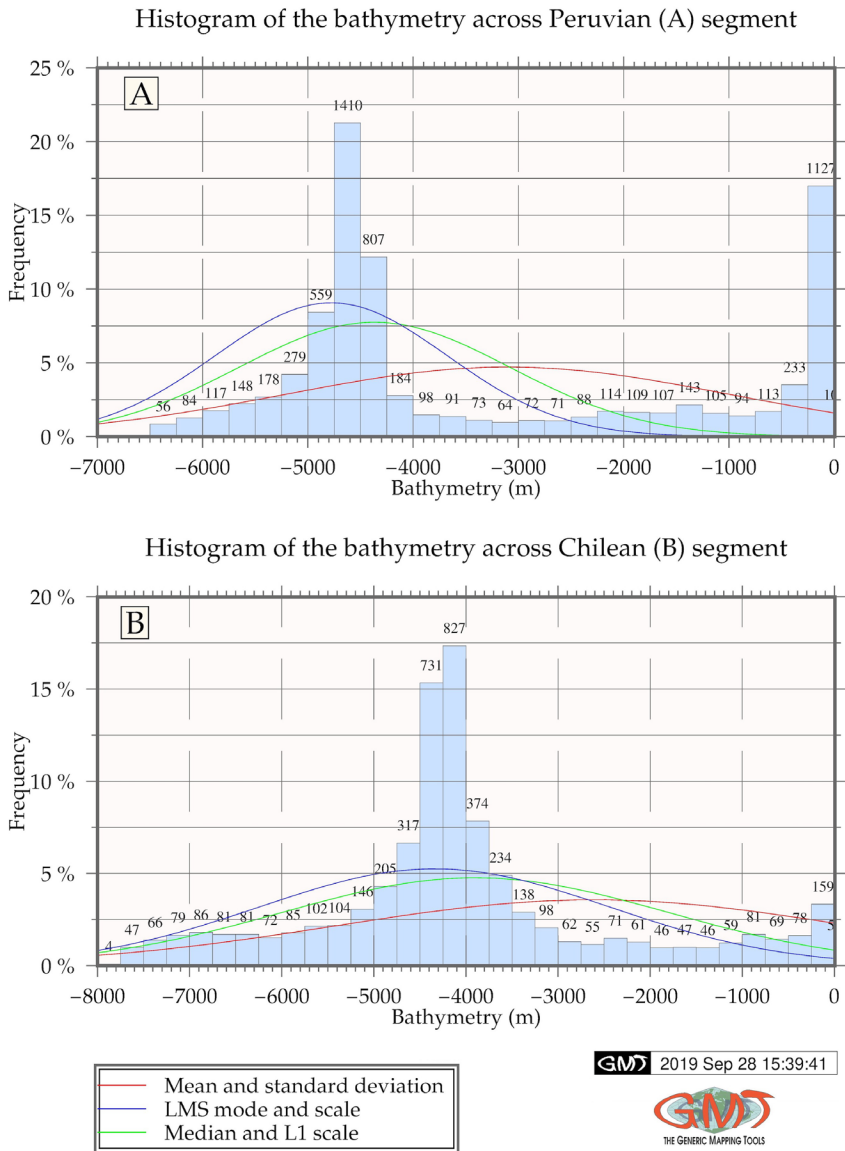


Fig 7. Histograms on the statistical analysis of the bathymetric data distribution

environmental processes in the ocean ecosystems. Several studies have revealed deep interconnections between the biodiversity of the ocean and the geospatial settings of the ecosystems: geology (sediments, tectonics, stratigraphy), bathymetry (depths), geomorphology (shape) and oceanology (deep currents). Various publications have reported deep ocean

slab dynamics and tectonics (e.g. A.J. Oakley et al. 2008; A. Heuret, S. Lallemand 2005), deep ecosystems functioning and development (B.H. Robison 2004, 2009; K.J. Osborn et al. 2009; M.J. Costello et al. 2006; M.R. Clark et al. 2009 2010), marine thematic mapping (I.A. Suetova et al. 2005). Several attempts have been made so far to study the correlation

between various factors involved in the functioning of the ocean. However, there are certain limitations in these studies mostly caused by the study object: submarine trenches are the least reachable landform on the Earth that require significant application of numerical modelling, machine learning, remote sensing and GIS cartographic tools.

Existing techniques for modelling deep-sea trenches mostly identify relations and processes among the tectonic slabs, depths and seismicity (C.R. Ranero et al. 2005), tectonic slab subduction and migration (C. Kincaid, P. Olson 1987), slab dynamics and rheology (B. Kaus, T.W. Becker 2008). These and other studies do not discuss geomorphic variations in the trench structure in great detail, but rather focus on geological issues. From the marine geo-

science perspective, insufficient research into deep-sea trenches is caused by limited access to hadal trenches, limitations in methodological techniques and constraints in the usage of GIS plugins for spatial modelling. Taking the aspect of machine learning and GMT algorithms into account, precision and accuracy in oceanological modelling, as well as visualization of oceanographic big data sets, increase significantly. They also broaden the perspective of marine research to multi-disciplinary level. Hence, this paper presents a contribution towards the development of advanced cartographic methods of data processing, visualization and modelling. This technical paper has a methodological character aimed at presenting GMT workflow and approaches for the cartographic audience.

Literature

- Amin H., Sjöberg L.E., Bagherbandi M., 2019, *A global vertical datum defined by the conventional geoid potential and the Earth ellipsoid parameters*. "Journal of Geodesy" Vol. 93, no. 10, pp. 1943–1961. <https://doi.org/10.1007/s00190-019-01293-3>
- Angel M.V., 1982, *Ocean trench conservation*. "Environmentalist" Vol. 2, pp.1–17.
- Behrmann J.S., Leslie S.D., Cande S.C., 1994, *ODP Leg 141 Scientific Party. Tectonics and geology of spreading ridge subduction at the Chile Triple Junction: A synthesis of results along from Leg 141 of the Ocean Drilling Program*. "Geologische Rundschau" Bd. 83, pp. 832–852.
- Bello-González J.P., Contreras-Reyes E., Arriagada C., 2018, *Predicted path for hotspot tracks off South America since Paleocene times: Tectonic implications of ridge-trench collision along the Andean margin*. "Gondwana Research" Vol. 64, pp. 216–234. DOI:10.1016/j.gr.2018.07.008+
- Cande S.C., Leslie R. B., 1986, *Late Cenozoic tectonics of the southern Chile Trench*. "Journal of Geophysical Research" Vol. 91, pp. 471–496.
- Cecioni A., Pineda V., 2010, *Geology and geomorphology of natural hazards and human-induced disasters in Chile*. "Developments in Earth Surface Processes" Vol. 13, pp. 379–413. DOI: 10.1016/S0928-2025(08)10018-9
- Cifuentes I.L., 1989, *The 1960 Chilean earthquakes*. "Journal of Geophysical Research" Vol. 94, pp. 665–680.
- Clark M.R., Rowden A.A., Schlacher R., Williams A., Consalvey M., 2010, *The ecology of seamounts: structure, function, and human impacts*. "Annual Review of Marine Science" Vol. 2, pp. 253–278. DOI: 110.1146/annurev-marine-120308-081109
- Contreras-Reyes E., Carrizo D., 2011, *Control of high oceanic features and subduction channel on earthquake ruptures along the Chile-Peru subduction zone*. "Physics of the Earth and Planetary Interiors" Vol. pp. 186, 49–58. DOI: 10.1016/j.pepi.2011.03.002
- Contreras-Reyes E., Jara J., Maksymowicz A., Weinreb W., 2013, *Sediment loading at the southern Chilean trench and its tectonic implications*. "Journal of Geodynamics" Vol. 66, pp. 134–145. DOI: 10.1016/j.jog.2013.02.009
- Contreras-Reyes E., Osses A., 2010, *Lithospheric flexure modeling seaward of the Chile trench: implications for oceanic plate weakening in the Trench Outer Rise region*. "Geophysical Journal International" Vol. 182, no.1, pp. 97–112. DOI: 10.1111/j.1365-246X.2010.04629.x
- Contreras-Reyes E., Flueh E.R., Grevemeyer I., 2010, *Tectonic control on sediment accretion and subduction off south-central Chile: implications for coseismic rupture processes of the 1960 and 2010 megathrust earthquakes*. "Tectonics" Vol. 29, no. 6. DOI: 10.1029/2010TC002734
- Contreras-Reyes E., Grevemeyer I., Flueh E.R.M., Scherwath M., Heesemann M., 2007, *Alteration of the subducting oceanic lithosphere at the southern central Chile trench-outer rise*. "Geochemistry Geophysics Geosystems" Vol. 8, Q07003. DOI: 10.1029/2007GC001632.
- Contreras-Reyes E., Grevemeyer I., Flueh E.R., Reichert C., 2008, *Upper lithospheric structure of the subduction zone offshore southern Arauco Peninsula, Chile at -38°S*. "Journal of Geophysical Research" Vol. 113, B07303, DOI: 10.1029/2007JB005569.

- Costello M.J., Berghe, van den E., 2006, *Ocean biodiversity informatics: a new era in marine biology research and management*. "Marine Ecology – Progress Series" No. 316, pp. 203–214. DOI: 10.3354/meps316203
- Divins D., 2003, *Total sediment thickness of the world's oceans and marginal seas*. Boulder, CO. NOAA National Geophysical Data Center. <http://www.ngdc.noaa.gov/mgg/sedthick/sedthick.html>
- Fisher R.L., Raitt R.W., 1962, *Topography and structure of the Peru-Chile trench*. "Deep-Sea Research" Vol. 9, pp. 424–443.
- Gambi C., Vanreusel A., Danovaro R., 2003, *Biodiversity of nematode assemblages from deep-sea sediments of the Atacama Slope and Trench (South Pacific Ocean)*. "Deep-Sea Research I" No. 50, pp. 103–117.
- Gauss F.W., 1828, *Bestimmung des Breitenunterschiedes zwischen den Sternwarten von Göttingen und Altona durch Beobachtungen am Ramsdenschen Zenithsector*. Göttingen: Vanderschoeck und Ruprecht, pp. 48–50.
- Geersen J., 2019, *Sediment-starved trenches and rough subducting plates are conducive to T tsunami earthquakes*. "Tectonophysics" No. 762, pp. 28–44. DOI: 10.1016/j.tecto.2019.04.024
- Geersen J., Voelker D., Behmann J.H., 2018, *Oceanic trenches*. In: *Submarine Geomorphology*. Cham: Springer, pp. 409–424.
- Hayes D.E., 1966, *A geophysical investigation of the Peru-Chile Trench*. "Marine Geology" Vol. 4, no. 5, pp. 309–351. DOI: 10.1016/0025-3227(66)90038-7
- Heuret A., Lallemand S., 2005, *Plate motions, slab dynamics and back-arc deformation*. "Physics of the Earth and Planetary Interiors" Vol. 149, pp. 31–51. DOI: 10.1016/j.pepi.2004.08.022
- Kaus B., Becker T.W., 2008, *A numerical study on the effects of surface boundary condition and rheology on slab dynamics*. "Bollettino di Geofisica Teorica ed Applicata" Vol. 49, no. 2, pp. 177–181.
- Kincaid C., Olson P., 1987, *An experimental study of subduction and slab migration*. "Journal of Geophysical Research" Vol. 92, pp. 13832–13840.
- Lacey N.C., Rowden A.A., Clark M.R., Kilgallen N.M., Linley T., Mayor D.J., Jamieson A.J., 2016, *Community structure and diversity of scavenging amphipods from bathyal to hadal depths in three South Pacific Trenches*. "Deep-Sea Research I" No. 111, pp. 121–137. DOI: 10.1016/j.dsr.2016.02.014
- Lemenkova P., 2018a, *R scripting libraries for comparative analysis of the correlation methods to identify factors affecting Mariana Trench formation*. "Journal of Marine Technology and Environment" Vol. 2, pp. 35–42. DOI: 10.6084/m9.figshare.7434167
- Lemenkova P., 2018b, *Factor analysis by R programming to assess variability among environmental determinants of the Mariana Trench*. "Turkish Journal of Maritime and Marine Sciences" Vol. 4, pp. 146–155. DOI: 10.6084/m9.figshare.7358207
- Lemenkova P. 2019a, *Statistical analysis of the Mariana Trench geomorphology using R programming language*. "Geodesy and Cartography" Vol. 45, no. 2, pp. 57–84. DOI: 10.3846/gac.2019.3785
- Lemenkova P., 2019b, *An empirical study of R applications for data analysis in marine geology*. "Marine Science and Technology Bulletin" Vol. 8, no. 1, pp. 1–9. DOI: 10.33714/masteb.486678
- Lemenkova P., 2019c., *Processing oceanographic data by Python libraries NumPy, SciPy and Pandas*. "Aquatic Research" Vol. 2, pp. 73–91. DOI: 10.3153/AR19009
- Lemenkova P., 2019d, *Testing linear regressions by StatsModel Library of Python for oceanological data interpretation*. "Aquatic Sciences and Engineering" Vol. 34, pp. 51–60. DOI: 10.26650/ASE2019547010
- Lemenkova P., 2019e, *Numerical data modelling and classification in marine geology by the SPSS statistics*. "International Journal of Engineering Technologies" Vol. 5, no. 2, pp. 90–99. DOI: 10.6084/m9.figshare.8796941
- Manea V.C., Manea M., Ferrari L., Orozco-Esquivel T., Valenzuela R.W., Husker A., Kostoglodov V., 2017, *A review of the geodynamic evolution of flat slab subduction in Mexico, Peru, and Chile*. "Tectonophysics" No. 695, pp. 27–52. DOI: 10.1016/j.tecto.2016.11.037
- Mather A.E., Hartley A.J., Griffiths J.S., 2014, *The giant coastal landslides of Northern Chile: Tectonic and climate interactions on a classic convergent plate margin*. "Earth and Planetary Science Letters" No. 388, pp. 249–256. DOI: 10.1016/j.epsl.2013.10.019
- Oakley A.J., Taylor B., Moore G.F., 2008, *Pacific plate subduction beneath the central Mariana and Izu-Bonin fore-arcs: new insights from an old margin*. "Geochemistry Geophysics Geosystems" Vol. 9. DOI: 10.1029/2007GC001820
- Osborn K.J., Haddock S.H.D., Pleijel F., Madin L.P., Rouse G.W., 2009, *Deep-sea, swimming worms with luminescent 'bombs'*. "Science" Vol. 325, 964. DOI: 10.1126/science.1172488
- Prince R.A., Kulm L.D., 1975, *Crustal rupture and the initiation of imbricate thrusting in the Peru-Chile Trench*. "GSA Bulletin" Vol. 86, no. 12, pp. 1639–1653.
- Ranero C.R., Villaseor A., Morgan Ph.J., Wdwinrebe W., 2005, *Relationship between bending-faulting at trenches and intermediate-depth seismicity*. "Geochemistry, Geophysics, Geosystems" Vol. 6. DOI: 10.1029/2005GC000997
- Robison B.H., 2004, *Deep pelagic biology*. "Journal of Experimental Marine Biology and Ecology" No. 300, pp. 253–272. DOI: 10.1016/j.jembe.2004.01.012
- Robison B.H., 2009, *Conservation of deep pelagic biodiversity*. "Conservation Biology" Vol. 23, pp. 847–858. DOI: 10.1111/j.1523-1739.2009.01219.x

- Sandwell D.T., Müller R.D., Smith W.H.F., Garcia E., Francis R., 2014, *New global marine gravity model from CryoSat-2 and Jason-1 reveals buried tectonic structure*. "Science" Vol. 346, no. 6205, pp. 65–67.
- Sarmiento-Rojas L.F., Van Wess J.D., Cloetingh S., 2006, *Mesozoic transtensional basin history of the Eastern Cordillera, Colombian Andes: inferences from tectonic models*. "Journal of South American Earth Sciences" Vol. 21, pp. 383–411.
- Schellart W.P., Lister G.S., Toy V.G., 2006, *A Late Cretaceous and Cenozoic reconstruction of the Southwest Pacific region: tectonics controlled by subduction and slab rollback processes*. "Earth Review" Vol. 76, pp. 191–233.
- Schenke H.W., Lemenkova P., 2008, *Zur Frage der Meeresboden-Kartographie: Die Nutzung von AutoTrace Digitizer für die Vektorisierung der bathymetrischen Petschora-See Daten in der Petschora-See*. "Hydrographische Nachrichten" Bd. 25, H. 81, pp. 16–21. DOI: 10.6084/m9.figshare.7435538
- Smith W.H.F., 1993, *On the accuracy of digital bathymetric data*. "Journal of Geophysical Research" Vol. 98, no. B6, pp. 9591–9603.
- Smith W.H.F., Sandwell D.T., 1995, *Marine gravity field from declassified Geosat and ERS-1 altimetry*, "EOS Transactions American Geophysical Union" Vol. 76, Fall Mitting Suppl, F156.
- Stewart H.A., Jamieson A.J., 2018, *Habitat heterogeneity of hadal trenches: Considerations and implications for future studies*. "Progress in Oceanography" Vol. 161, pp. 47–65. DOI: 10.1016/j.pocean.2018.01.007
- Suetova I.A., Ushakova L.A., Lemenkova P., 2005, *Geoinformation mapping of the Barents and Pechora Seas*. "Geography and Natural Resources" Vol. 4, pp. 138–142. DOI: 10.6084/m9.figshare.7435535
- Thornburg T.M., Kulm, L.D., 1990, *Submarine-fan development in the southern Chile Trench: a dynamic interplay of tectonics and sedimentation*. "Geological Society of America. Bulletin." Vol. 102, pp. 1658–1680.
- Völker D., Reichel T., Wiedicke M., Heubeck C., 2008, *Turbidites deposited on Southern Central Chilean seamounts: Evidence for energetic turbidity currents*. "Marine Geology" Vol. 251, no. 1-2, pp. 15–31. DOI: 10.1016/j.margeo.2008.01.008
- Wahr J., Molenaar M., Bryan F., 1998, *Time variability of the Earth's gravity field: hydrological and oceanic effects and their possible detection using GRACE*. "Journal of Geophysical Research" Vol. 103, pp. 30205–30229.
- Wessel P., Smith W.H.F., 1998, *New, improved version of the generic mapping tools released*. "EOS Transactions American Geophysical Union" Vol. 79, p. 579.
- Wessel P., Smith W.H.F., Scharroo R., Luis J.F., Wobbe F., 2013, *Generic mapping tools: improved version released*. "EOS Transactions American Geophysical Union" Vol. 94, no. 45, pp. 409–410. DOI: 10.1002/2013EO450001
- Wessel P., Smith W.H.F., 2018, *The generic mapping tools. Version 4.5.18 Technical reference and cookbook* (Computer software manual). U.S.A.
- Wessel P., Smith W.H.F., Scharroo R., Luis J., Wobbe F., 2019, *The generic mapping tools. GMT man pages. Release 5.4.5* (Computer software manual). U.S.A.
- Wessel P., Watts A.B., 1988, *On the accuracy of marine gravity measurements*. "Journal of Geophysical Research" Vol. 93, pp. 393–413.
- Yang A., Fu Y., 2018, *Estimates of effective elastic thickness at subduction zones*. "Journal of Geodynamics" No. 117, pp. 75–87. DOI: 10.1016/j.jog.2018.04.007
- Yoshida M., 2017, *Trench dynamics: Effects of dynamically migrating trench on subducting slab morphology and characteristics of subduction zones systems*. "Physics of the Earth and Planetary Interiors" No. 268, pp. 35–53. DOI: 10.1016/j.pepi.2017.05.004
- Zeigler J.M., Athearn W.D., Small H., 1957, *Profiles across the Peru-Chile Trench*. "Deep-Sea Research" Vol. 4, pp. 238–249. DOI: 10.1016/0146-6313(56)90056-9