



Risks of cryogenic landslide hazards and their impact on ecosystems in cold environments

Polina Lemenkova

► To cite this version:

Polina Lemenkova. Risks of cryogenic landslide hazards and their impact on ecosystems in cold environments. IRLA 2014 International Symposium. The Effects of Irrigation and Drainage on Rural and Urban Landscapes (IRLA2014)., Nov 2014, Patras, Greece. 10.13140/RG.2.2.21380.68486 . hal-02448396

HAL Id: hal-02448396

<https://hal.science/hal-02448396>

Submitted on 22 Jan 2020

HAL is a multi-disciplinary open access archive for the deposit and dissemination of scientific research documents, whether they are published or not. The documents may come from teaching and research institutions in France or abroad, or from public or private research centers.

L'archive ouverte pluridisciplinaire **HAL**, est destinée au dépôt et à la diffusion de documents scientifiques de niveau recherche, publiés ou non, émanant des établissements d'enseignement et de recherche français ou étrangers, des laboratoires publics ou privés.



Distributed under a Creative Commons Attribution - NonCommercial 4.0 International License

Abstract

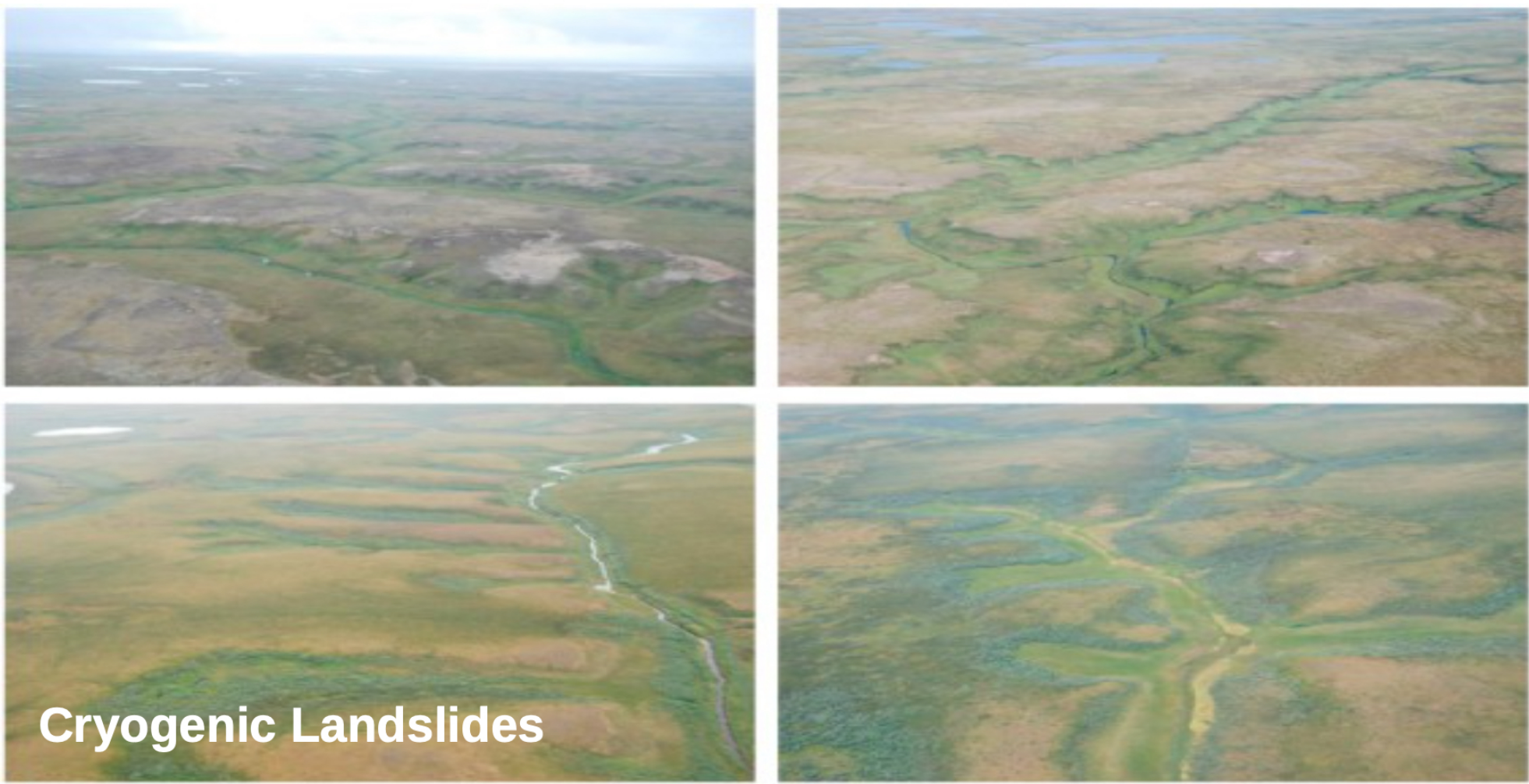
Research focuses on monitoring landscapes downgrading in specific conditions of Arctic ecosystems with cold climate conditions (marshes, permafrost, high humidity and moisture). Specific case study: cryogenic landslides typical for cold environments with permafrost. Area: Yamal Peninsula. Aim: analysis of the environmental changes caused by cryogenic landslides in northern landscapes affecting sensitive Arctic ecosystems. Thaw of the permafrost layer causes destruction of the ground soil layer and activates cryogenic landslide processes. After disaster, vegetation coverage needs a long time to recover, due to the sensitivity of the specific northern environment, and land cover types change. ILWIS GIS was used to process 2 satellite images Landsat TM taken at 1988 and 2011, to assess spatiotemporal changes in the land cover types. Research shown ILWIS GIS based spatial analysis for environmental mapping.

Research Area

Research area: Bovanenkovo region, Yamal Peninsula. Geomorphology: flat homogeneous lowland region with low-lying plains of heights <90m. Such geographic settings create specific local environmental conditions. Yamal has the largest high-latitude wetland system in the World: 900,000 *km*² of peatlands, wetlands, dense lakes and river network. Seasonal flooding, active erosion, permafrost and local landslides. Dominating tundra vegetation types: heath, grasses, moss, lichens, woody plants (shrubs and willows). Environmental problems: climate change and landslides, affecting landscapes and causing changes in land cover types.

Research Problem

Environmental problem of Yamal: cryogenic landslides. Processes of superficial cryogenic landslides are active in tundra. Permafrost serves as a shear surface for sliding, contributes to the landslide formation. Cryogenic landslides develop on fine-grained, saline marine sediments: common destructive disastrous geomorphological hazards on the Yamal Peninsula covering ca 70% of the area.



Land Cover Types

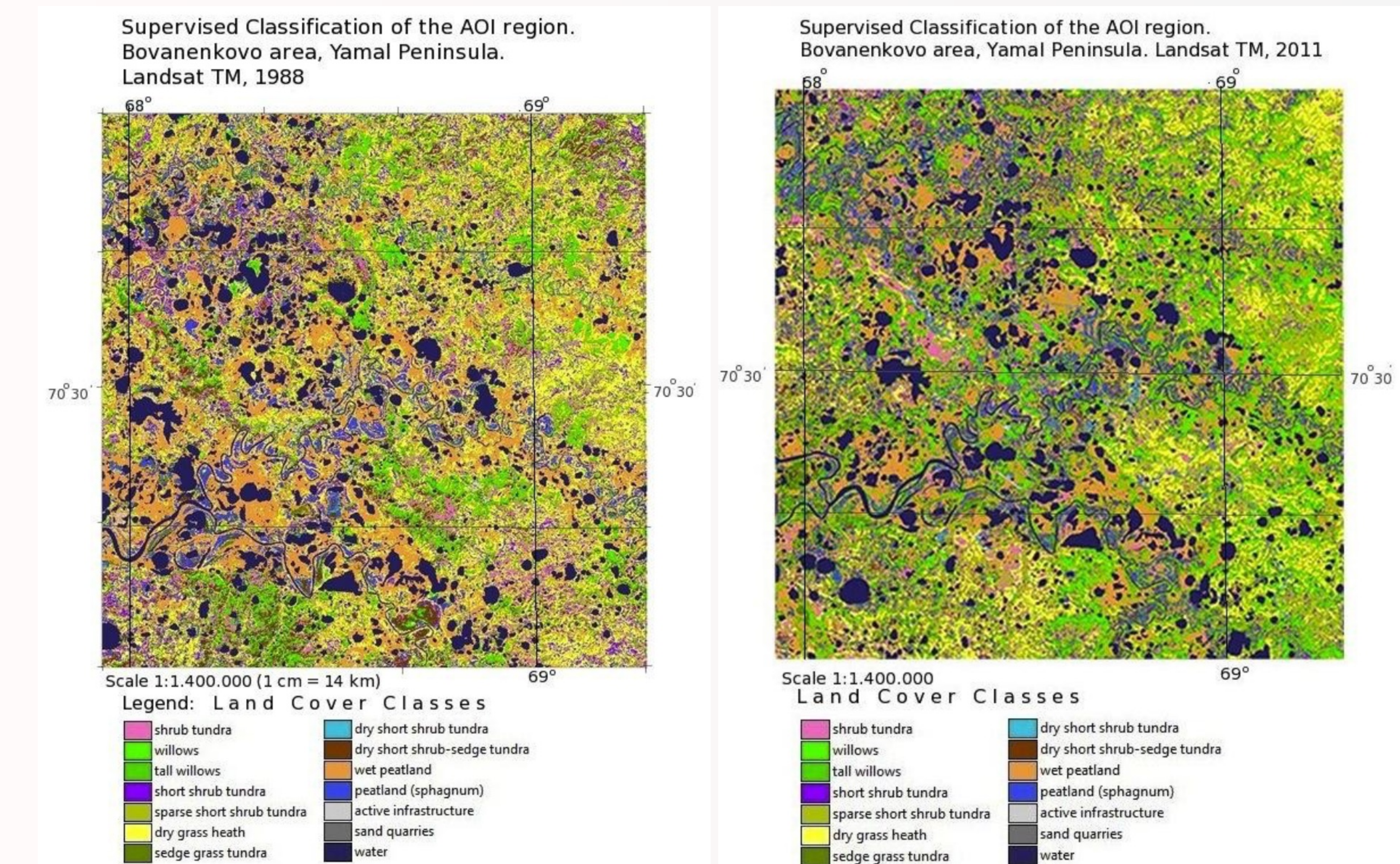
The defined classes include following landscapes types: shrub tundra, willows, tall willows, short shrub tundra, sparse short shrub tundra, dry grass heath, sedge grass tundra, dry short shrub tundra, dry short shrub sedge tundra, wet peatland, peatland (sphagnum). The pixels were associated with land cover classes using their digital numbers, similar to key samples.

Landslides

Development of permafrost => scarce vegetation. Several years after landslides, vegetation changes gradually: grass, moss, lichen, shrub => sedge => willows. Landslide-affected areas of bare slopes: willow shrubs => indicator for former landslides. Vegeta-

tion stages show landslides age: early-stage (primitive mosses or lichen) => recent landslide formation; meadow and willow shrubs with high canopy => final stage of landslides. Ground waters salinity and chemical content of sediments indicates age of landslides.

Mapping



GIS method consists in Landsat TM image classification, spatial analysis and thematic mapping, technically performed in ILIWIS GIS. Landsat scenes for land cover mapping: advantages of application in geosciences and cartography, ca 40 year history of the image record, and free availability. Landsat scenes are series of satellite imagery by NASA and the USGS with 30-m resolution.

Workflow

Workflow includes following steps:

- Data: orthorectified Landsat TM files in GeoTIFF acquired over the area of Bovanenkovo, Yamal Peninsula. Images: 1988 and 2011, taken in growing season with visible vegetation. Data capture, import, converting .img file into ASCII raster format (GDAL). After converting, each image contained collection of 7 Landsat raster bands.
- Data pre-processing: Enhancement of visual color and contrast. Geographic referencing of Landsat TM: setting UTM projection, E Zone 42, N Zone W, WGS 1984 datum (Georeference Corner Editor).
- Area Of Interest (AOI) was identified and cropped on raw images This area shows region in a large scale which represents tundra landscapes.
- Supervised Classification by Minimal Distance method. Method is based on spatial analysis of the spectral signatures of object variables.
- Sampling of classes: using Sample Set tool in ILWIS GIS. Training pixels for each land cover type with distinguishable contrast colors selected as representative samples and stored as classification key.

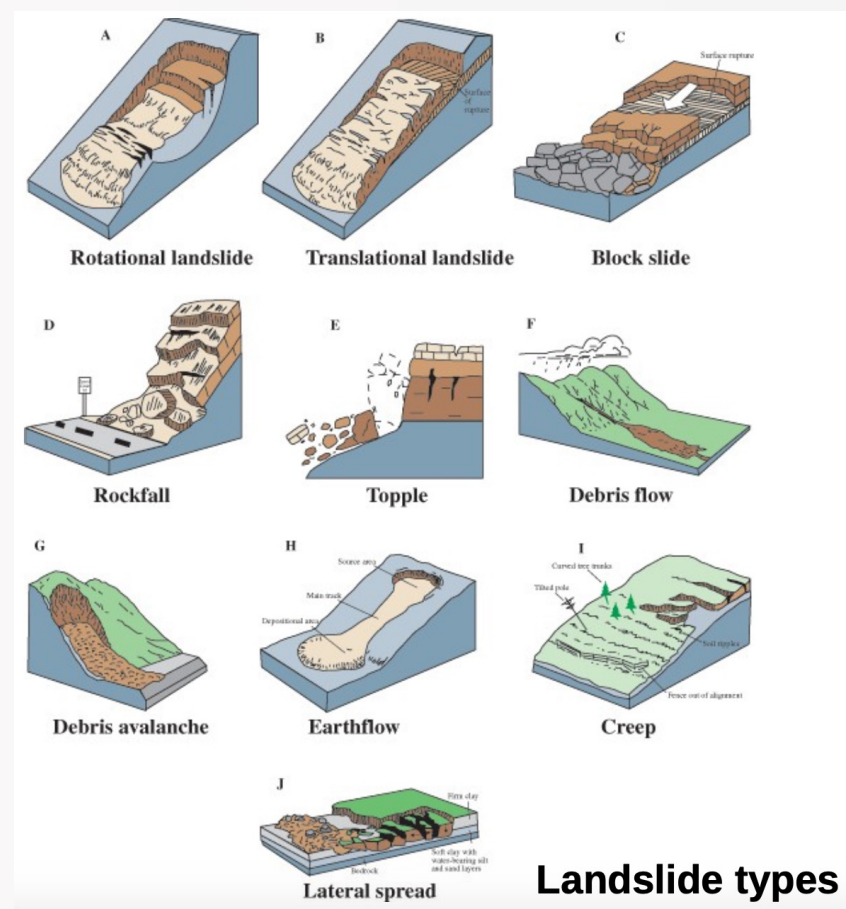
Results

Willows covers 2750,57 ha in 2011, which is more than in 1988, when it covered 1547,52 ha (both 'tall willows' and 'willows' classes). Increase in tundra vegetation: 'short shrub tundra', 'sparse short shrub tundra' and 'dry short shrub tundra' have more areas in 2011 comparing to 1988: ca 5442,00 ha vs 1823,00 ha. Increase of wooden vegetation class goes along

with shrunk of grass and heath areas: 'dry grass heath' had area of 3335.39 ha in 1988, now covers 1204.94 ha. Slight decrease can be noticed in the 'peatlands' and 'wet peatlands' classes 3958.40 ha against 2765.41 ha in 2011 by 'wet peatlands', and 625.71 ha in 1988 vs 488.69 ha by 'peatland (sphagnum)' class.

Geographic Settings

Cryogenic landslides have origin in thawing of underground permafrost layer, which has negative effects destructing upper soil layer and vegetation coverage. Area of the Kara Sea is shallow: almost 40% of the continental shelf is <50 m. The sea coasts are mostly flat, flooded during the high tide. Located in the area of permafrost distribution, soils are frozen for the most of the year, with the depth of the frozen soil up to 0.2 m in the north and 2 m in the south. The ecosystems of the region are adapted towards specific Arctic environment.



Conclusions

Results show overall increase of woody vegetation (willows and shrubs), not typical for local environment, and decrease of peatlands, grass and heath. Environmental factors: active cryogenic landsliding. Climatic factor: increase of annual average T => permafrost thawing and abnormal increase of woody plants. Gradual changes in plant species patterns and distribution affect landscapes in Yamal. Triggering factors: complex climatic-environmental changes in Arctic and local cryogenic processes, e.g. successive change in vegetation recovering after cryogenic landslides.

Land Cover Class	Nr. of pixels, 1988	Nr. of pixels, 2011	Area, ha, 1988	Area, ha, 2011
Shrub tundra	220447	168226	1146,3	874,7
Short shrub tundra	165079	270158	858,4	1404,8
Willows	192645	457004	1006,9	2376,4
Tall willows	103954	71952	540,5	374,1
Sparse short shrub tundra	176511	759380	917,8	3948,7
Dry grass heath	641420	231719	3335,3	1204,9
Sedge grass tundra	27545	57052	143,2	296,6
Dry short shrub tundra	8984	16993	46,7	88,3
Wet peatland	761231	531809	3958,4	2765,4
Peatland (sphagnum)	120328	93979	625,7	488,6
Dry short shrub-sedge tundra	173693	92242	903,2	479,6

Acknowledgements

Current work has been supported by the **Finnish Center for International Mobility (CIMO)** for author's research stay at the **University of Lapland, Arctic Center** (Grant No. TM-10-7124), during 01 July - 31 December 2011.

Bibliography

Author's publications on Geography, Remote Sensing and GIS:

- S. Gauger, G. Kuhn, K. Gohl, T. Feigl, P. Lemenkova, and C. Hillenbrand, "Swath-bathymetric mapping", The expedition ANTARKTIS-XXIII/4 of the Research Vessel 'Polarstern' in 2006. Reports on Polar and Marine Research **557**, 38–45 (2007).
- K. Gohl et al., *Crustal and Sedimentary Structures and Geodynamic Evolution of the West Antarctic Continental Margin and Pine Island Bay* (Bremerhaven, Germany, 2006).
- M. Klaučo, B. Gregorová, U. Stankov, V. Marković, and P. Lemenkova, "Land-scape metrics as indicator for ecological significance: assessment of Sitno Natura 2000 sites, Slovakia", in Ecology and environmental protection, Proceedings of International Conference (2014), pp. 85–90.
- M. Klaučo, B. Gregorová, U. Stankov, V. Marković, and P. Lemenkova, "Determination of ecological significance based on geostatistical assessment: a case study from the Slovak Natura 2000 protected area", Central European Journal of Geosciences **5**, 28–42 (2013).
- G. Kuhn et al., *The response of quaternary climatic cycles in the South-East Pacific: development of the opal belt and dynamics behavior of the West Antarctic ice sheet* (Bremerhaven, Germany, 2006).
- P. Lemenkova, "Cost-Effective Raster Image Processing for Geoecological Analysis using ISOCLUST Classifier: a Case Study of Estonian Landscapes", in Modern problems of geoecology and landscapes studies (2014), pp. 74–76.
- P. Lemenkova, "Rural Sustainability and Management of Natural Resources in Tian Shan Region, Central Asia", in Celebrating pastoral life. heritage and economic development (2014), pp. 81–89.
- P. Lemenkova, "Opportunities for Classes of Geography in the High School: the Use of 'CORINE' Project Data, Satellite Images and IDRISI GIS for Geovisualization", in Perspectives for the Development of Higher Education (2014), pp. 284–286.
- P. Lemenkova, "Monitoring changes in agricultural landscapes of Central Europe, Hungary: application of ILWIS GIS for image processing", in Geoinformatics: theoretical and applied aspects (2013).
- P. Lemenkova, "Geospatial Technology for Land Cover Analysis", MEA Geospatial Digest (2013).
- P. Lemenkova, "Impacts of Climate Change on Landscapes in Central Europe, Hungary", in Current Problems of Ecology, Ecological monitoring and management of natural protection, Vol. 2 (2012), pp. 134–136.
- P. Lemenkova, "Water Supply and Usage in Central Asia, Tian Shan Basin", in 4th International Symposium for Doctoral studies in the Fields of Civil Engineering, Architecture & Environmental Protection (PhiDAC-2012) (Sept. 2012), pp. 331–338.
- P. Lemenkova, "Seagrass Mapping and Monitoring Along the Coasts of Crete, Greece", M.Sc. Thesis (University of Twente, Faculty of Earth Observation and Geoinformation (ITC), Enschede, Netherlands, Mar. 8, 2011), 158 pp.
- P. Lemenkova, "Using ArcGIS in Teaching Geosciences", Russian, B.Sc. Thesis (Lomonosov Moscow State University, Moscow, Russia, June 5, 2007), 58 pp.
- P. Lemenkova, "Geoecological Mapping of the Barents and Pechora Seas", Russian, B.Sc. Thesis (Moscow, Russia, 2004), 78 pp.
- P. Lemenkova, *Ecological and Geographical Mapping of the Baltic Sea Region in the Gulf of Finland*, Russian, Moscow, Russia: Lomonosov Moscow State University, Mar. 30, 2002, Term Paper.
- P. Lemenkova and I. Elek, "Clustering Algorithm in ILWIS GIS for Classification of Landsat TM Scenes: a Case Study of Mecsek Hills Region, Hungary", in Geosciences and environment, Near-surface geophysics, Proceedings 3rd International Conference (2012).
- P. Lemenkova, B. Forbes, and T. Kumpula, "Mapping Land Cover Changes Using Landsat TM: A Case Study of Yamal Ecosystems, Arctic Russia", in Geoinformatics: theoretical and applied aspects (2012).
- H. W. Schenke and P. Lemenkova, "Zur Frage der Meeresboden-Kartographie: Die Nutzung von AutoTrace Digitizer für die Vektorisierung der Bathymetrischen Daten in der Petschora-See", German, Hydrographische Nachrichten **25**, 16–21 (2008).
- I. Suetova, L. Ushakova, and P. Lemenkova, "Geoecological Mapping of the Barents Sea Using GIS", in International Cartographic Conference (ICC) (2005).
- I. Suetova, L. Ushakova, and P. Lemenkova, "Geoinformation mapping of the Barents and Pechora Seas", Geography and Natural Resources **4**, 138–142 (2005).