



HAL
open science

Conservation Area Designation in the Andes

Polina Lemenkova

► **To cite this version:**

Polina Lemenkova. Conservation Area Designation in the Andes. Calibration and Validation of Earth Observation Data, Nov 2009, Southampton, United Kingdom. 10.13140/RG.2.2.25715.89126 . hal-02448318

HAL Id: hal-02448318

<https://hal.science/hal-02448318>

Submitted on 22 Jan 2020

HAL is a multi-disciplinary open access archive for the deposit and dissemination of scientific research documents, whether they are published or not. The documents may come from teaching and research institutions in France or abroad, or from public or private research centers.

L'archive ouverte pluridisciplinaire **HAL**, est destinée au dépôt et à la diffusion de documents scientifiques de niveau recherche, publiés ou non, émanant des établissements d'enseignement et de recherche français ou étrangers, des laboratoires publics ou privés.



Distributed under a Creative Commons Attribution - NonCommercial 4.0 International License

Conservation Area Designation in the Andes

Polina Lemenkova

pauline.lemenkova@gmail.com

Info

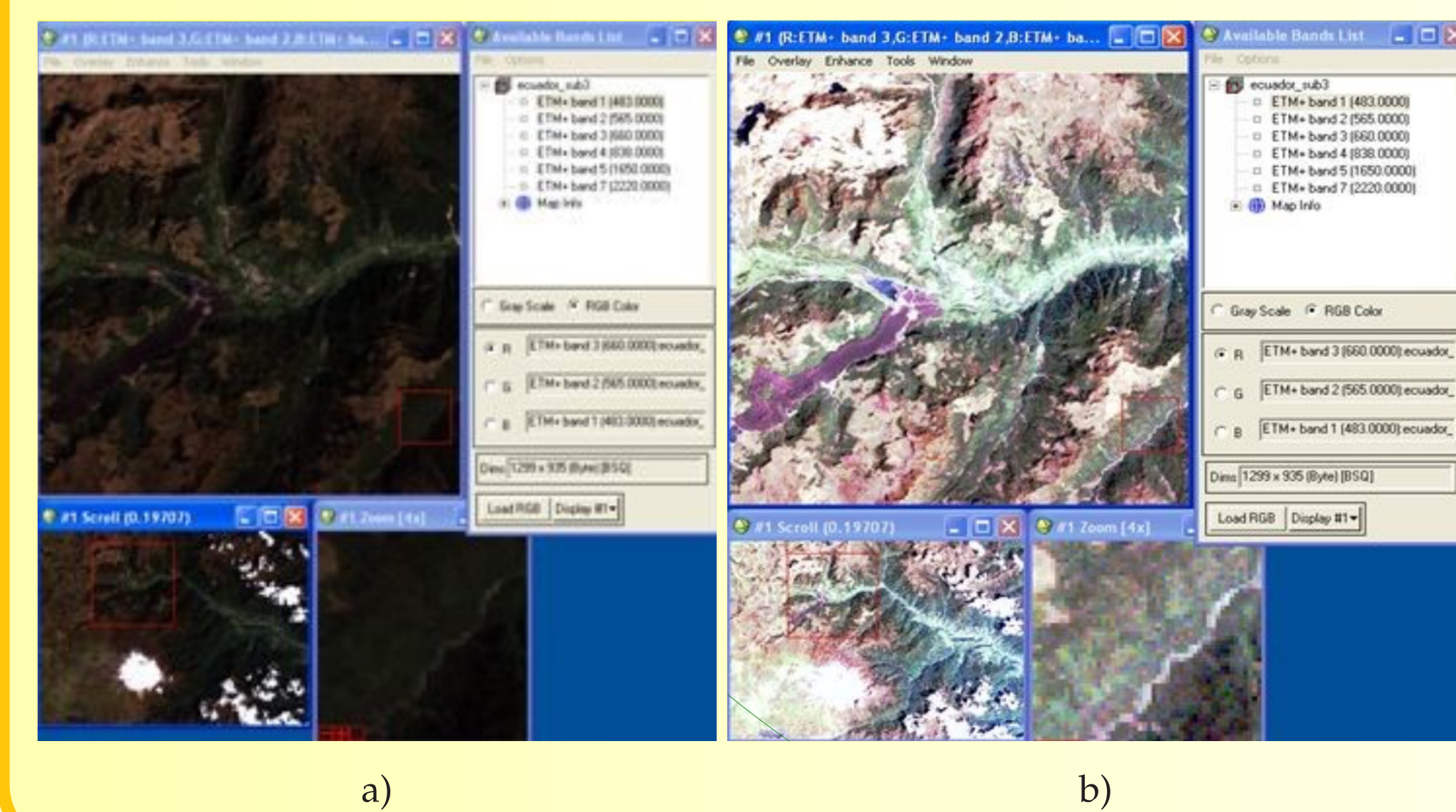
Student Poster. Student ID: 3 23369248. Course: 'GEOG6038 Calibration and Validation of Earth Observation Data' Practical 3: Conservation Area Designation in the Andes. Student: Lemenkova P. Supervisor: Prof. Dr. E.J. Milton. Funding: Erasmus Mundus MSc Scholarship GEM-L0022/2009/EW, University of Southampton, UK. 2009

Introduction

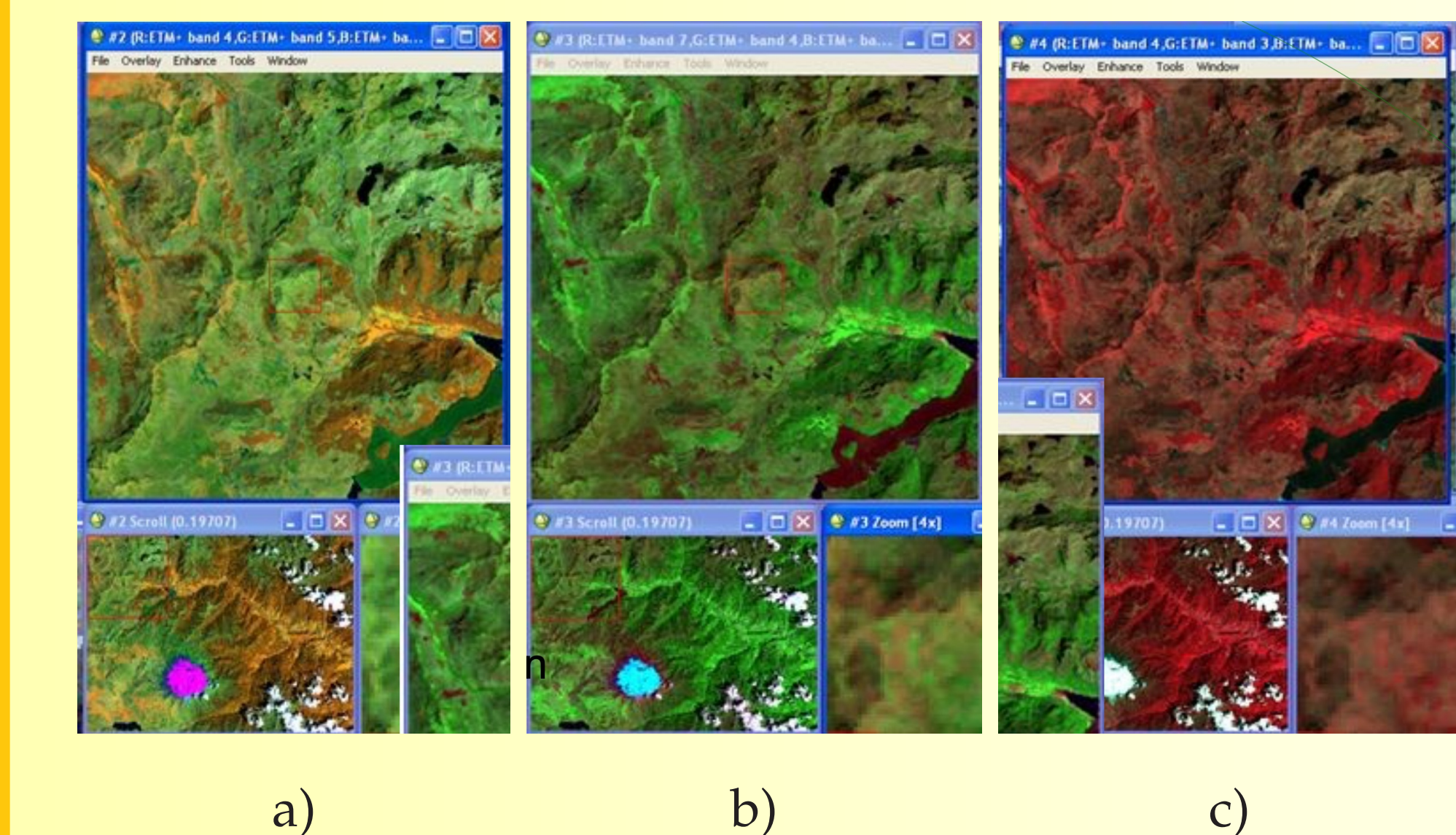
Páramo National Park in Ecuador is known for its unique natural resources in high altitude grasslands. The ecosystems of Páramo consist mostly of rare species and are the key protected area for exceptionally high endemism. ENVI software enables to make an analysis of the area and to produce a map based on 2 criteria: vegetation amount and altitude. We need to show vegetation growing on different heights and to create 3D-visualization of the analysis.

1. Image: Display

a): True-colour composite of the ETM+ image, bands 3,2,1 (RGB). b): Image enhancement was done, since the default contrast is bad.

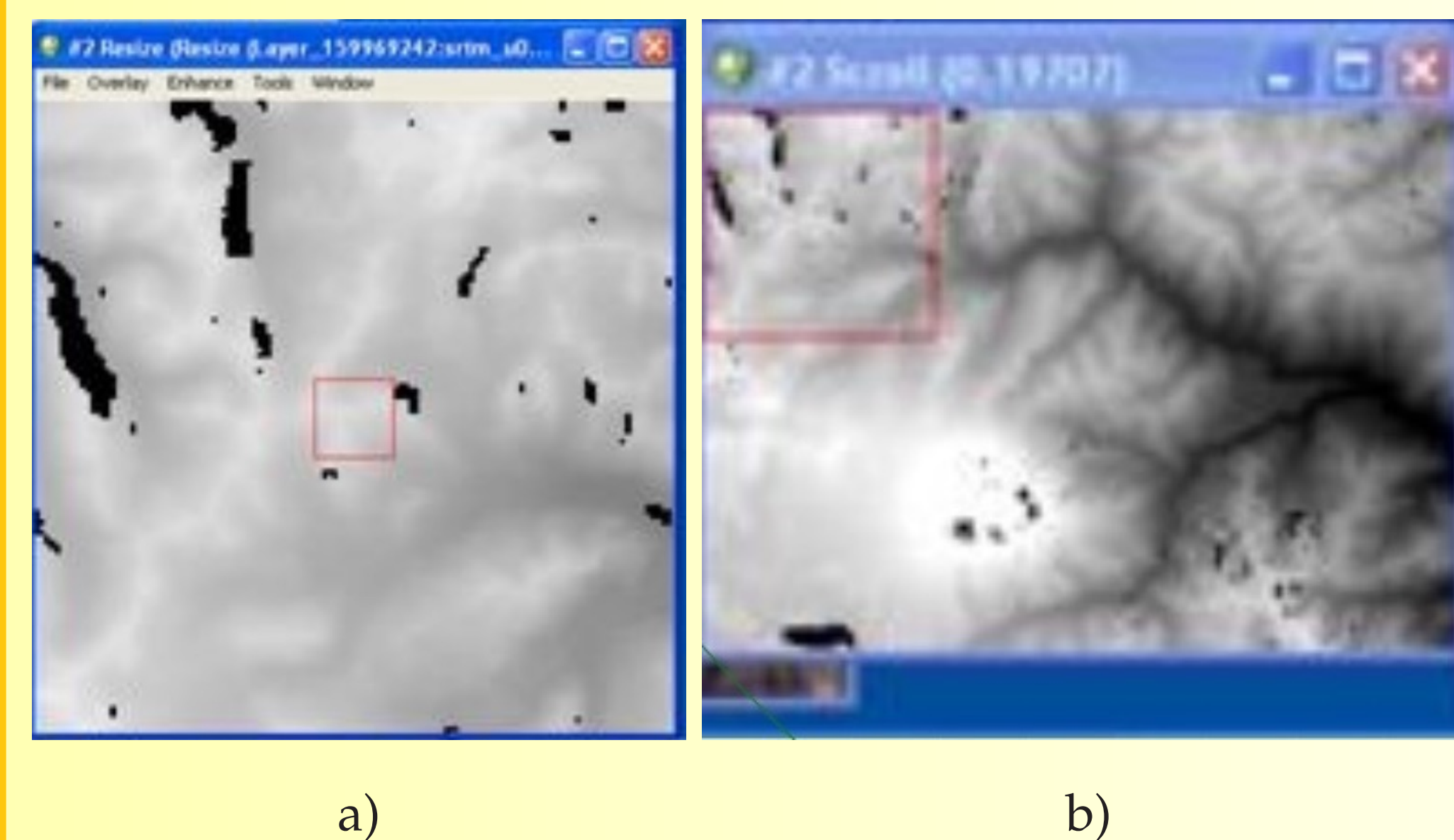


2. Image: Contrast Enhancement



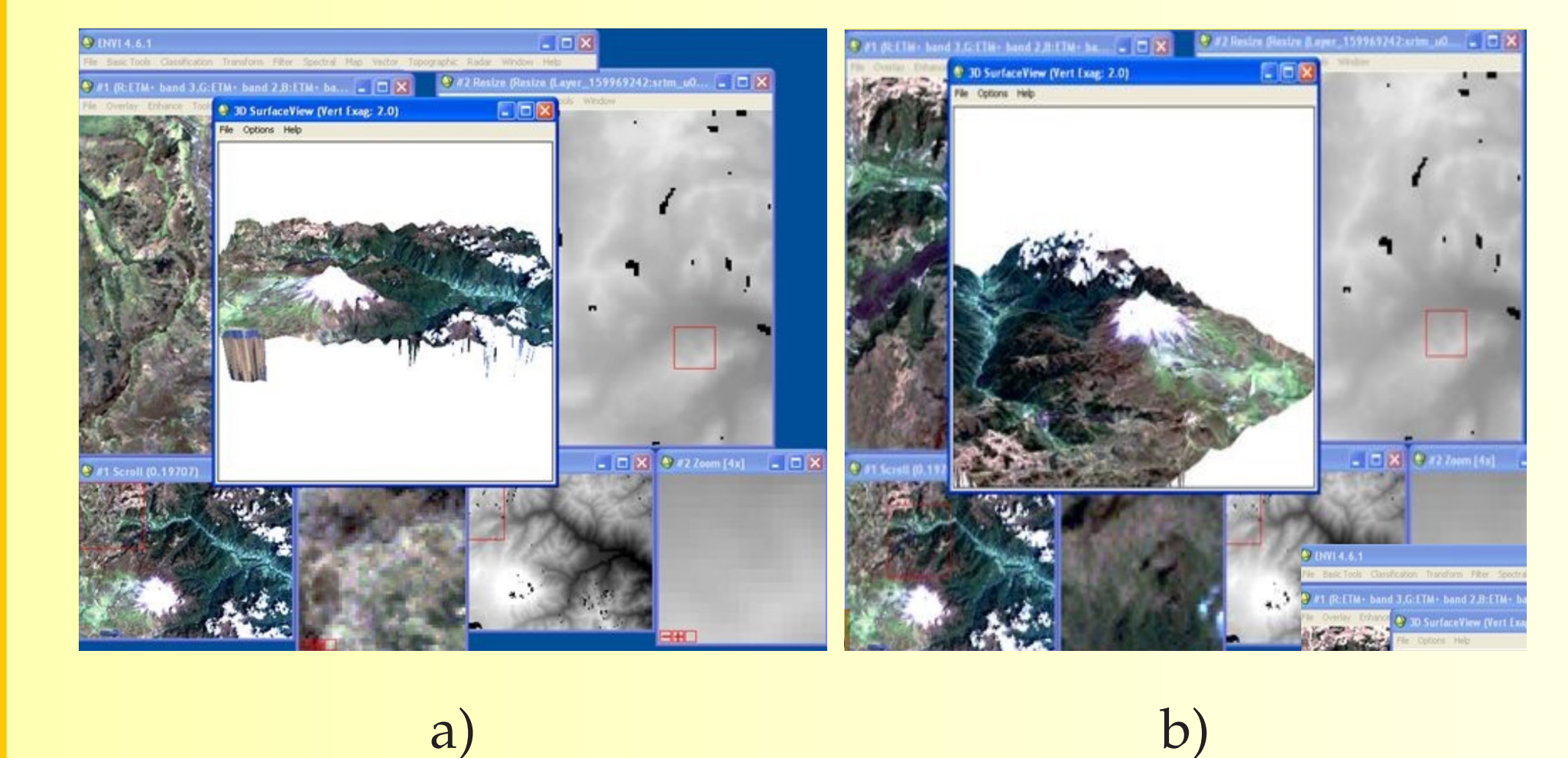
Contrast stretched ETM+ image in bands 3,2,1 (RGB). Method: Enhance-Gaussian. a): 'Forestry' composite of ETM+ Image in 4,5,3 bands. b): ETM+ Image in 7-4-2 bands (RGB) with bright vegetation usually used for general public. c): The most common false composite 4-3-2 (RGB).

3. SRTM-Data Upload

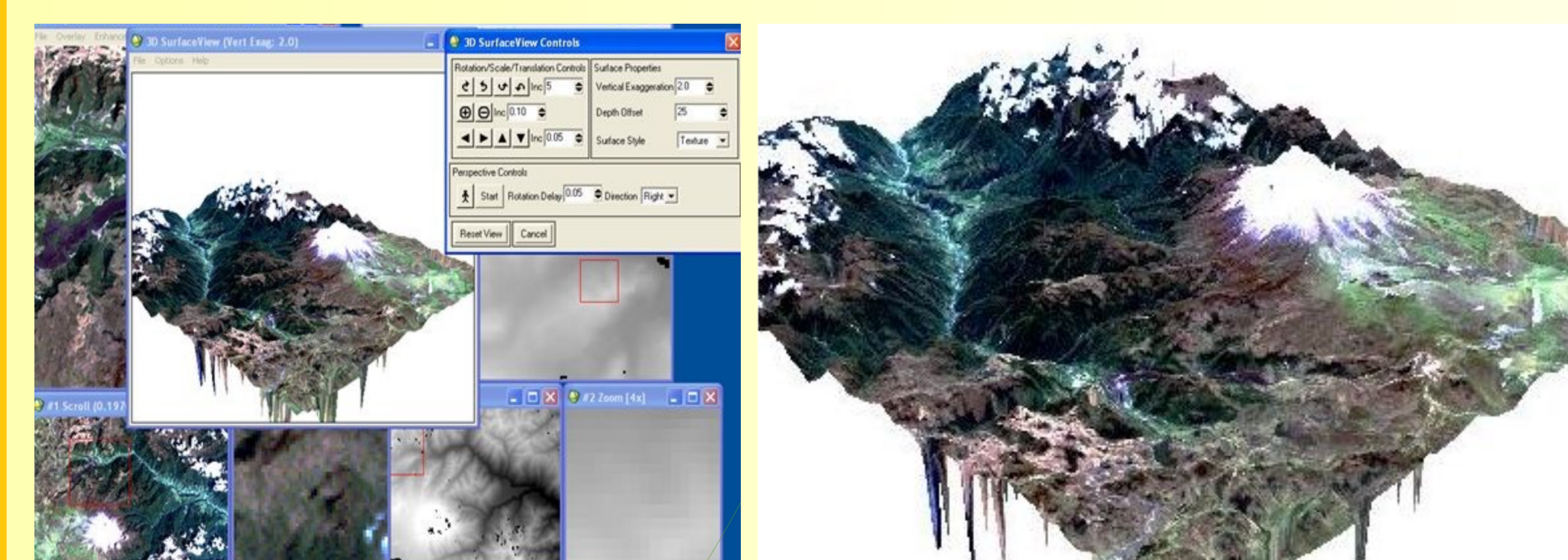


a): SRTM-image (Shuttle Radar Topography Mission) displayed in ENVI. b): (SRTM_resamp1285) It has only 1 Band, So that we display it In grey colour. SRTM is necessary to derive elevation model. It has .hgt format and Contains the height of terrain in meters.

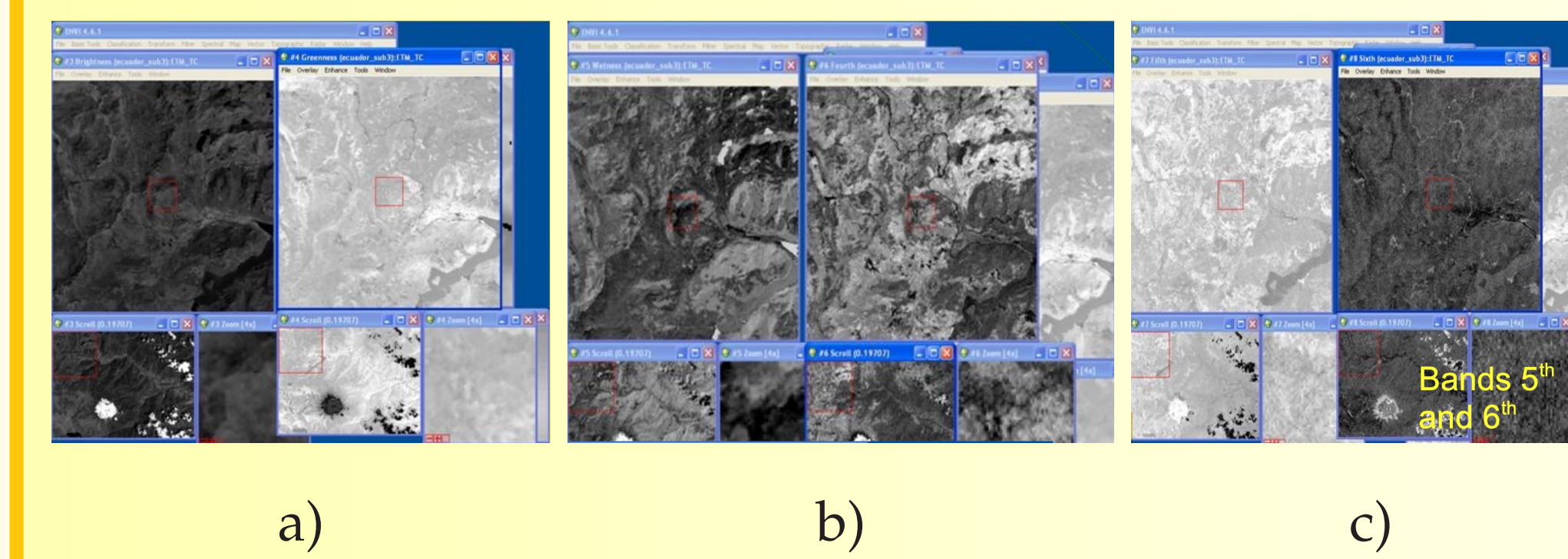
4. 3D Visualization



a): 3D Surface View (Colour-band Image and DEM made from SRTM). b): 3D Surface View (Colour-band Image upon DEM made from SRTM), other point of 3D – 7view, manipulated by the mouse and moving around the screen. 3D Surface View (Colour-band Image And DEM made from SRTM), control panel of ENVI. 3D representation (Colour-band Image upon DEM made from SRTM). DEM resolution is 256, Vertical Exaggeration = 2.0. File saved as raster .jpg-image

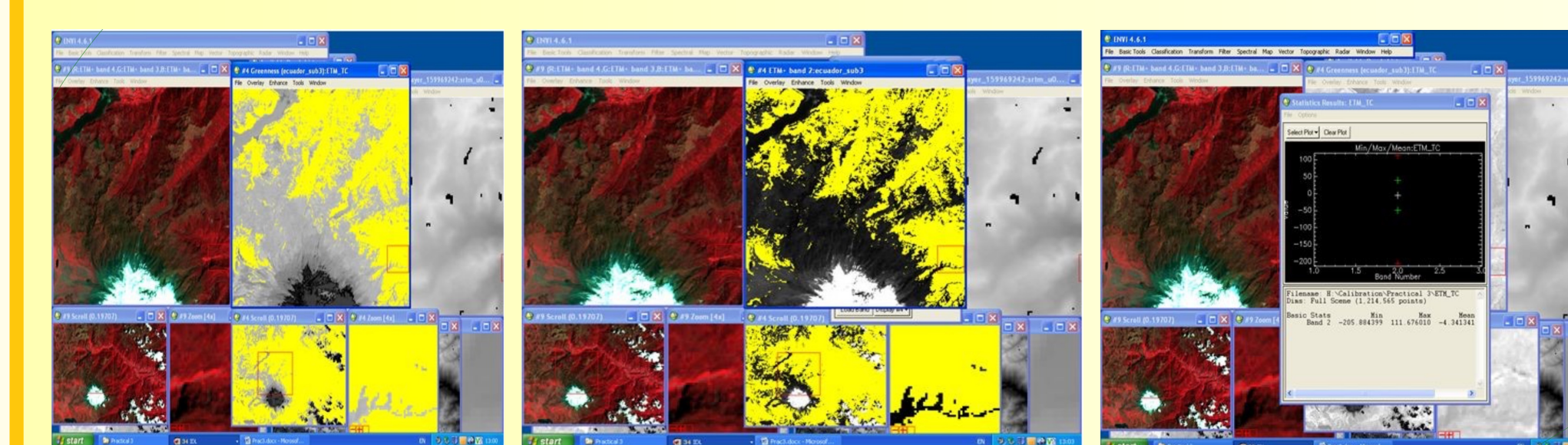


5. Calculating Greenness Index



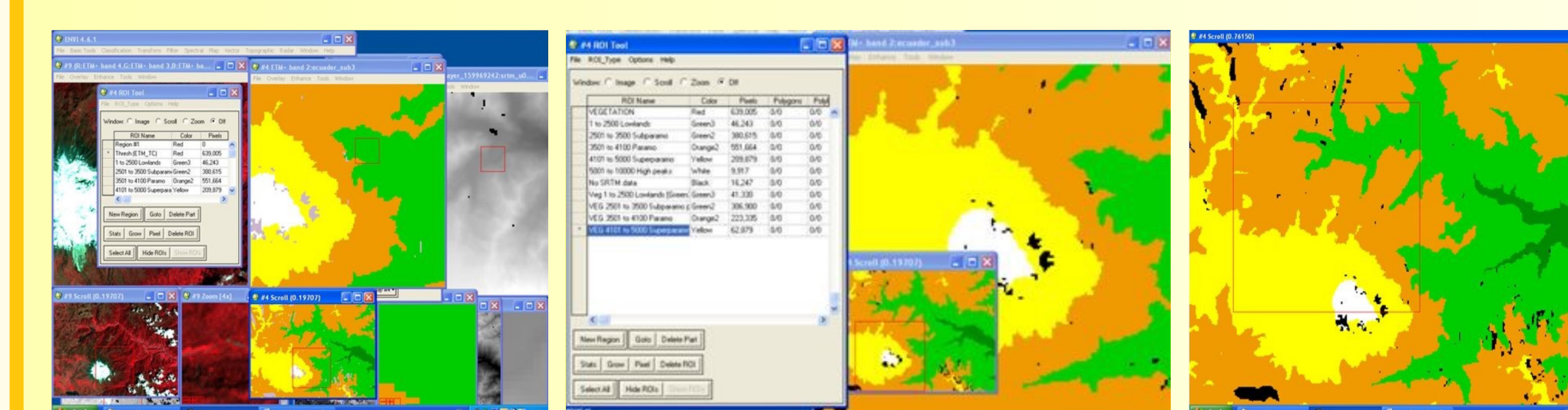
Creating Greenness Indexes is necessary for classification of different vegetation communities ("Transform – Tasseled Cap" ENVI) Each of the TC Bands is represented in grey scale. ETM_TC file. Right: Wetness and 4th Band. Brightness & Greenness. Bands of Vegetation Indexes. TC Greenness Index gives us a value of zero greenness: no vegetation. We use it for creating ROI.

6. Creation Vegetation Layer ROI



ROI (Region of Interest). Creation of ROI In vegetation using "Tools–Region of Interest-ROI". Input Band – Greenness. Lower limit = 1.0 Max Value = upper limit In TC Image. Result: all Vegetation is selected (coloured yellow). Creation of ROI layer (vegetation). SRTM as a background image. Computation of Statistics (vegetation).

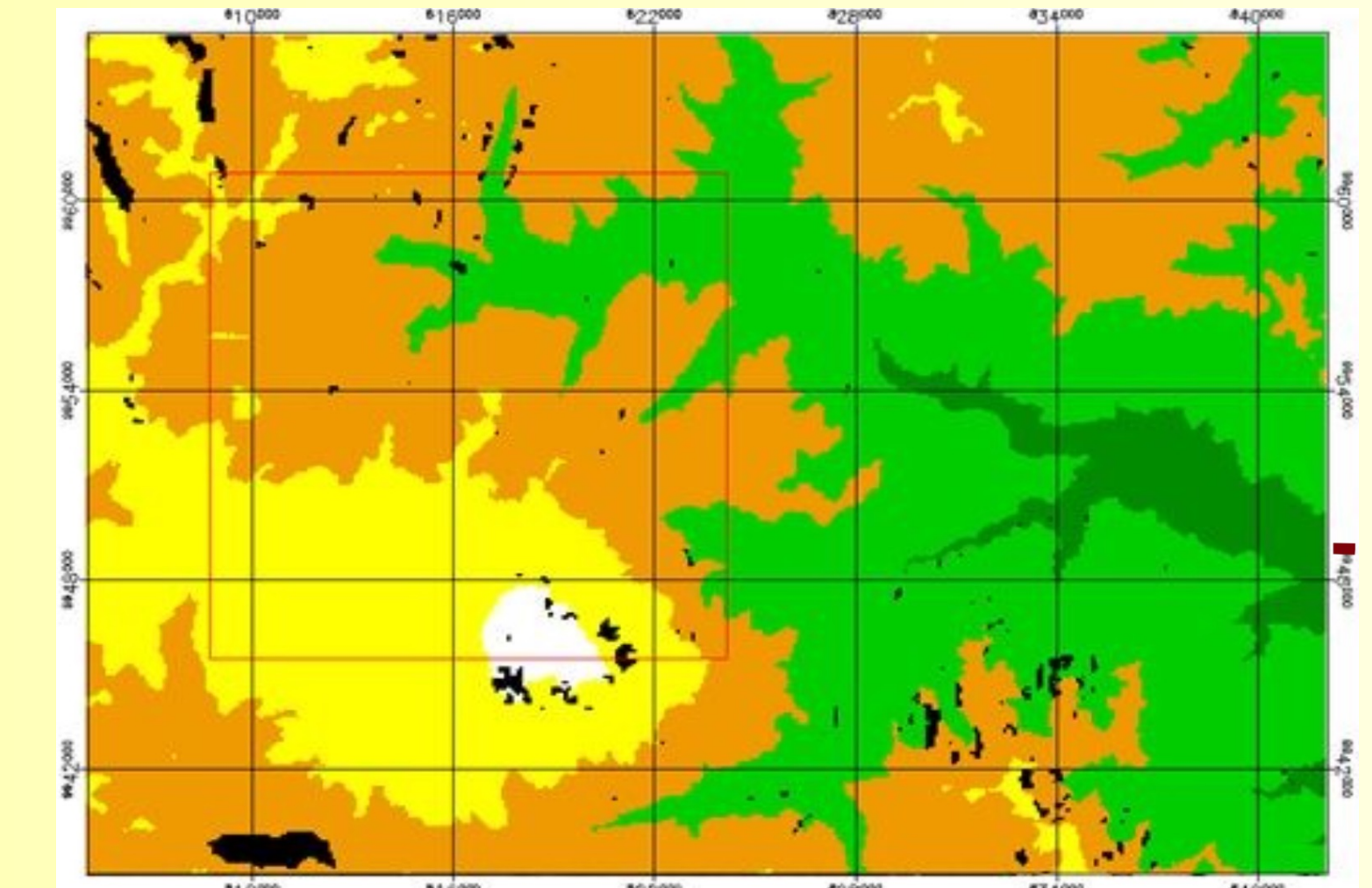
7. Creating Altitude Layer



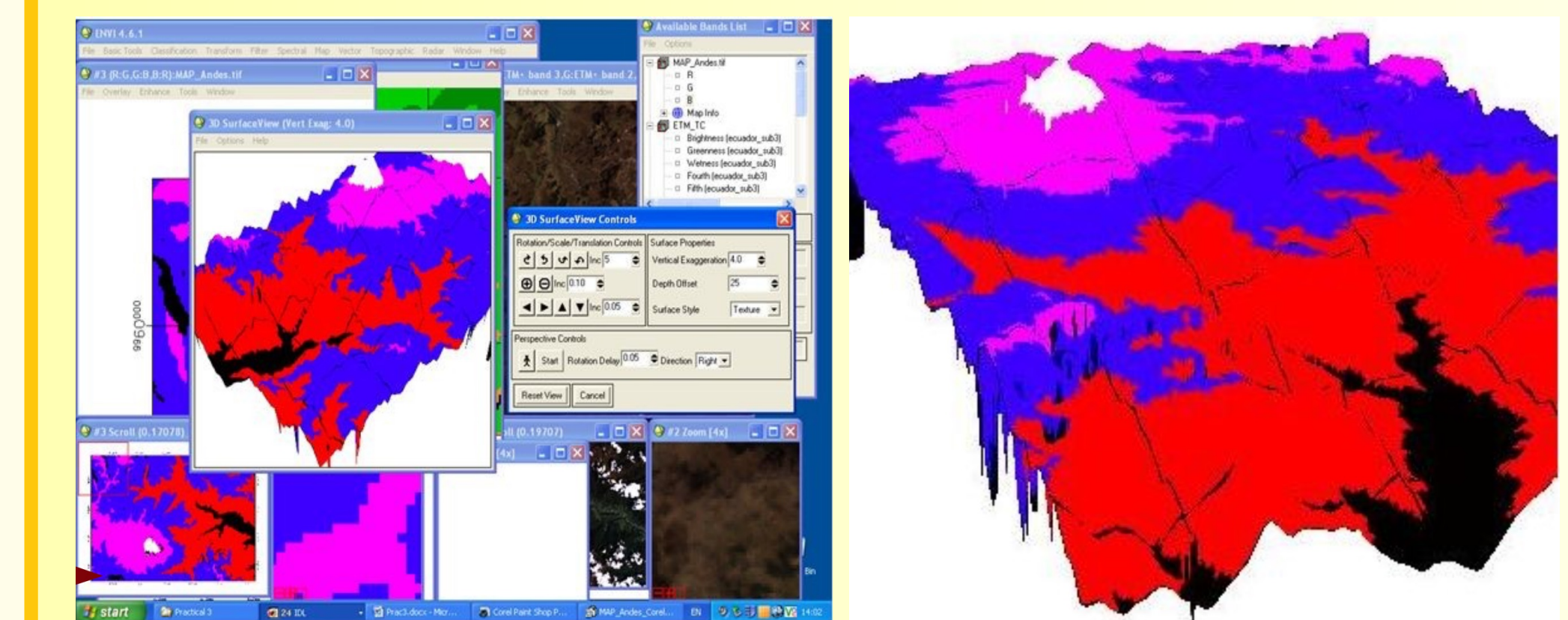
Creating Altitude Zones by "Intersect Regions" for each pair of ROIs. Final altitude zones are: Lowland Vegetation (1-2500m), Subparamo Vegetation (2501-3500), Paramo Vegetation (3501-4100) and Superparamo Vegetation (4101 – 5000). These zones are shown on the map in different colors (yellow, beige, two greens)

8. Mapping and Design

Vegetation Map with grid lines. We finally added Geographic coordinate system representing a Grid Line on the Map. Map saved as Geo-TIFF.



3D-Mapping (Final Map + DEM)



Displaying final map in 3D view by SRTM DEM image. 3D of the map was draped as classified final image of Paramo upon the SRTM file of elevation (heights). The colors were changed by ENVI (TIFF-conversion)

Bibliography

Author's publications on Geography, Remote Sensing and GIS:

- ¹S. Gauger, G. Kuhn, K. Gohl, T. Feigl, P. Lemenkova, and C. Hillenbrand, "Swath-bathymetric mapping", The expedition ANTARKTIS-XXIII/4 of the Research Vessel 'Polarstern' in 2006 557, 38–45 (2007).
- ²K. Gohl et al., *Crustal and Sedimentary Structures and Geodynamic Evolution of the West Antarctic Continental Margin and Pine Island Bay* (Bremerhaven, Germany, 2006).
- ³P. Lemenkova, "Using ArcGIS in Teaching Geosciences", Russian, B.Sc. Thesis (Lomonosov Moscow State University, Faculty of Educational Studies, Moscow, Russia, June 5, 2007), 58 pp.
- ⁴P. Lemenkova, "Geoecological Mapping of the Barents and Pechora Seas", Russian, B.Sc. Thesis (Lomonosov Moscow State University, Faculty of Geography, Department of Cartography and Geoinformatics, Moscow, Russia, May 18, 2004), 78 pp.
- ⁵P. Lemenkova, *Ecological and Geographical Mapping of the Baltic Sea Region in the Gulf of Finland*, Russian, Moscow, Russia: Lomonosov Moscow State University, Mar. 30, 2002, Term Paper.
- ⁶H. W. Schenke and P. Lemenkova, "Zur Frage der Meeresboden-Kartographie: Die Nutzung von AutoTrace Digitizer für die Vektorisierung der Bathymetrischen Daten in der Petschora-See", German, *Hydrographische Nachrichten* 25, 16–21 (2008).
- ⁷I. Suetova, L. Ushakova, and P. Lemenkova, "Geoinformation mapping of the Barents and Pechora Seas", *Geography and Natural Resources* 4, 138–142 (2005).