



HAL
open science

Perturbation of the Surface of Amorphous Solid Water by the Adsorption of Polycyclic Aromatic Hydrocarbons

Eric Michoulier, Céline Toubin, Aude Simon, Joëlle Mascetti, Christian Aupetit, Jennifer A Noble

► **To cite this version:**

Eric Michoulier, Céline Toubin, Aude Simon, Joëlle Mascetti, Christian Aupetit, et al.. Perturbation of the Surface of Amorphous Solid Water by the Adsorption of Polycyclic Aromatic Hydrocarbons. *Journal of Physical Chemistry C*, 2020, 124 (5), pp.2994-3001. 10.1021/acs.jpcc.9b09499 . hal-02447448

HAL Id: hal-02447448

<https://hal.science/hal-02447448v1>

Submitted on 5 Aug 2024

HAL is a multi-disciplinary open access archive for the deposit and dissemination of scientific research documents, whether they are published or not. The documents may come from teaching and research institutions in France or abroad, or from public or private research centers.

L'archive ouverte pluridisciplinaire **HAL**, est destinée au dépôt et à la diffusion de documents scientifiques de niveau recherche, publiés ou non, émanant des établissements d'enseignement et de recherche français ou étrangers, des laboratoires publics ou privés.

Perturbation of the Surface of Amorphous Solid Water by the Adsorption of Polycyclic Aromatic Hydrocarbons

Eric Michoulier,^{†,‡} Céline Toubin,[†] Aude Simon,[‡] Joëlle Mascetti,[¶] Christian
Aupetit,[¶] and Jennifer A. Noble^{*,§}

E-mail: jennifer.noble@univ-amu.fr

Abstract

This joint theoretical and experimental study establishes that the adsorption of polycyclic aromatic hydrocarbons (PAHs) onto the amorphous ice surface provokes a broadening and redshift of the “dangling” OH (dOH) ice spectral feature, the redshift increasing with PAH size up to $\sim 85 \text{ cm}^{-1}$. It also reveals that, in certain interaction configurations, adsorption induces substantial reorganisation of the hydrogen-bonding network at the ice surface. Comparison with experiments validates the novel theoretical methodology relying on the density functional based tight binding approach, which offers a compromise between system size and accuracy enabling a wide sampling of surface structures. Applied in an astrophysical context, this study suggests that widening of the dOH feature by adsorption of aromatic molecules could explain its absence heretofore in observational ice spectra, offering hope that future missions with higher sensitivity will verify its presence or absence in dense regions.

Introduction

One of the most characteristic features of the mid infrared (MIR) spectrum of amorphous solid water (ASW) is the presence of two weak absorption bands at $\sim 3700 \text{ cm}^{-1}$, attributed to free OH bonds at the ice surface and commonly referred to as “dangling” OH bands (dOH).¹⁻⁵ Although the spectral signatures of water ice in dense molecular clouds and cores point to an amorphous structure,⁶ these dOH bands have, to date, not been observed in interstellar ices. Only one potential observation of a band in the dOH region has been made; a weak feature at 3660 cm^{-1} was detected along the line of sight toward protostellar object S140:IRS1, and tentatively assigned to the CO_2 molecule adsorbed on dOH.⁷ However, the absence of a positive detection does not necessarily preclude the presence of these features, as the instruments used to date have not had the combination of sensitivity and spectral resolution necessary to reveal the weak dOH bands. The lack of definitive observational evidence has given rise to debate surrounding the porosity of the amorphous water formed on dust grains, with uncertainty remaining as to the exact role formation⁸ and processing^{5,9-13} mechanisms play in determining the ice structure, and in particular its porosity. Laboratory studies have revealed, amongst other things, that the dOH is redshifted by the adsorption of

molecules onto the ice surface.³ Small molecules present in icy interstellar environments (i.e. clouds, cores, and disks) have been shown to induce relatively small shifts on the order of a few tens of wavenumbers. The redshift induced by the adsorption of CH₄ on an ASW surface is on the order of 20 cm⁻¹, increasing to ~ 40 cm⁻¹ for CO₂, and 60 cm⁻¹ for CO.^{3,9,14,15}

In the interstellar medium, PAHs are predicted to represent a significant fraction of the C budget, and are generally believed to contribute to the widely observed set of MIR spectral emission features known as the “aromatic infrared bands” (AIBs).¹⁶ They have also been proposed as the carriers of some of the “diffuse interstellar bands” (DIBs), a series of absorption bands in the near-IR–visible domain observed on the extinction curve of our galaxy.^{17,18} If PAHs are present in the interstellar medium, they are expected to freeze out onto dust grains in molecular clouds and form part of their icy mantles, within which they may be implicated in reaction networks. Once removed from the gas phase, their IR emission would be attenuated and they would only be observable in absorption, typically contributing to the complex 5–8 μm region.¹⁹ Although no such IR absorption feature has yet been unambiguously attributed to PAHs, it is clear that the interaction of PAHs with ice is key in determining both their physical chemistry and their observational signatures in such cold, dense environments. Another signature which could be indicative of molecular

adsorption onto icy mantles is the dOH. Several experimental studies on individual PAH molecules have shown that the dOH redshift induced by PAH adsorption is significantly larger than that of small molecules, with reported values up to $\sim 100\text{-}110\text{ cm}^{-1}$.²⁰⁻²²

To our knowledge, there has been no prior systematic study (experimental or theoretical) of the interaction of PAHs of increasing sizes with water ice and, critically, their interaction under interstellar-relevant conditions has not been modelled in terms of the influence on the dOH feature. From the theoretical point of view, the complexity hinges upon modelling a realistic PAH-ice system with both an explicit description of the electronic structure – mandatory in accounting for the vibrational structure – and a statistical description of the possible adsorption geometries including an explicit water environment. So far, this has not been possible due to the large sizes of the systems to be considered and the associated computational cost. In this work, we present the first joint experimental and computational study describing the influence of four aromatic molecules of increasing size (one to six rings) on the dOH feature. We present the experimental data before introducing a robust, newly-developed theoretical methodology, building on our previous studies of PAH-ice interactions^{23,24} to accurately describe the influence of the adsorption of molecules at an ice surface on the dOH vibrational features.

Experimental and theoretical methods

Experimental methods

Porous amorphous solid water (pASW) samples were prepared by depositing molecules onto a CsBr window held at 15 K in a high vacuum chamber. The setup has been detailed previously.^{22,25} Molecules were introduced by vapour deposition after multiple freeze-pump-thaw cycles (in the case of water and benzene (Bz, C₆H₆)) or by heating an oven positioned in front of the cold surface (anthracene (Anth, C₁₄H₁₀), pyrene (Pyr, C₁₆H₁₀), and coronene (Cor, C₂₄H₁₂)). FTIR spectra of 200 scans were obtained in transmission mode using a Bruker 70 V spectrometer. Co-deposition of water and aromatic molecules maximises the interactions between aromatics and the pASW surface, providing optimal IR signal for studying the surface water modes. The relative concentrations of water and the aromatics were also chosen to optimise interactions, with the values, determined via analysis of the vibrational bands, being 0.5–2 % for the PAHs^{26–28} and ~ 50 % for Bz.²⁹ An additional Bz:H₂O sample of ~ 3 % is included for completeness.

Theoretical methods

The modelling of PAH-ice systems undertaken in this work is based on previous studies.^{23,24}

Theoretical descriptions of aromatic-ice systems (Bz, Anth, Pyr, Cor) were based on starting point geometries extracted from classical molecular dynamics (MD) trajectories for Low Density Amorphous (LDA) ices.²³ The electronic structure is explicitly described for all atoms at the Self Consistent Charge Density Functional based Tight Binding (SCC-DFTB) level³⁰ with a modified version of the Hamiltonian dedicated to the study of molecular clusters, for which the description of long range interactions is improved *i.e.* with CM3 charges³¹ replacing Mulliken charges and empirical dispersion corrections.^{32,33} This method, designated hereafter as “DFTB” for simplicity, has been extensively benchmarked and used to describe benzene and PAHs in interaction with water clusters.^{34–36} Additional benchmarking, presented below, was performed on benzene (Bz) interacting with (H₂O)₈ clusters.

In this work, the modelled aromatic-ice systems are four sets of 49 finite-sized local minima consisting of one aromatic molecule in interaction with an ice cluster of an average size of 50 central water molecules that are allowed to relax and 90 frozen peripheral molecules (to maintain ice structure).²⁴ The local minima previously obtained using “weighted Mul-

liken charges” (WMULL)²⁴ were re-optimized at the DFTB level, *i.e.* using CM3 charges, which our benchmarking on Bz(H₂O)₈ clusters revealed to give more satisfactory results than WMULL in terms of harmonic vibrations, although both approaches are quite similar.

The harmonic IR spectra of both pure ice and aromatic-ice systems were obtained by diagonalisation of the weighted Hessian matrix, in which the off-diagonal terms coupling the mobile and fixed molecules were set to zero. In the past, we have taken into consideration finite temperature anharmonic effects in the study of water clusters.³⁴ However, in this case, the time necessary for convergence of the dynamic IR spectra for aromatic-ice systems of \sim 140 molecules is prohibitively long. In fact, the inherent width of the IR bands in the solid phase, as well as the sample averaging over tens of configurations, precludes the need to take into consideration the minor broadening effect due to anharmonicity, while the application of a scaling factor accurately reproduces shifts.

DFTB benchmarking for dOH mode and weak interactions

Benchmarking was performed on Bz interacting with (H₂O)₈ clusters, *i.e.* Bz(H₂O)₈, focusing on the description of the dOH feature and of its interaction with an aromatic molecule. This model system was chosen due to the availability of gas phase experimental IR spec-

tra.^{37,38} The DFTB Hamiltonian used to describe these systems was modified as follows: empirical dispersion and CM3 charges (with dOH, dCH, and dOC values of 0.12873, 0.098, and 0.0, respectively, as determined by Simon et al.³⁴) were added to improve the description of intermolecular interactions.

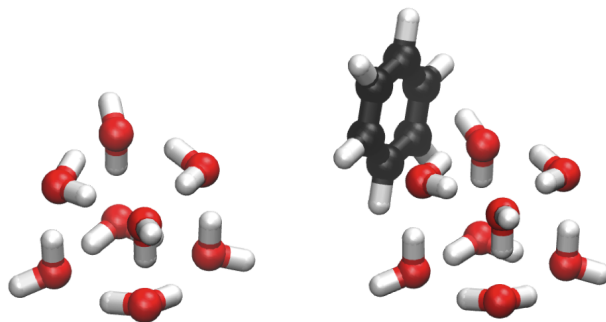


Figure 1: DFTB optimised geometries of $(\text{H}_2\text{O})_8$ (left) and $\text{Bz}(\text{H}_2\text{O})_8$ (right) used for benchmarking. $(\text{H}_2\text{O})_8$ belongs to the D_{2d} symmetry point group. Both clusters correspond to local minima at the SCC-DFTB level with CM3 charges. The starting point geometries, taken from Miliordos et al.³⁹ correspond to global minima at the MP2 level.

The most stable form of $(\text{H}_2\text{O})_8$ is known to be a cube, with the two most stable conformers belonging to the S_4 and D_{2d} symmetry point groups. The geometries of the D_{2d} isomer of $(\text{H}_2\text{O})_8$, both isolated and adsorbed on Bz, were optimised at the DFTB level. The D_{2d} geometry of $\text{Bz}(\text{H}_2\text{O})_8$ had previously been determined as the most stable form by Miliordos et al.³⁹ The geometry obtained here is very similar to that obtained at the MP2, CCSD(T), and wb97XD (DFT functional including dispersion) levels of theory:³⁹ the benzene molecule is almost parallel to one of the faces of the octamer cube, with one primary

π Bz–HO interaction and two secondary Bz–O interactions.

Table 1: Wavenumbers (in cm^{-1}) and intensities (in km mol^{-1}) of dO and dOH DFTB harmonic vibrational modes for the clusters presented in Figure 1.

	$(\text{H}_2\text{O})_8 D_{2d}$			$\text{Bz}-(\text{H}_2\text{O})_8 D_{2d}$		
	Mode	Wavenumber	Intensity	Mode	Wavenumber	Intensity
dO	61	3806.5	870.1	97	3803.3	754.6
dO	62	3806.5	870.2	98	3815.7	733.6
dOH	63	3925.0	27.1	99	3869.6	109.4
dOH	64	3925.0	26.9	100	3922.8	54.7
dOH	65	3925.7	4.0	101	3924.3	97.7
dOH	66	3925.5	289.6	102	3925.5	90.67

From our calculations, the $\text{Bz}-(\text{H}_2\text{O})_8$ complexation energy was determined to be $4.81 \text{ kcal mol}^{-1}$, in good agreement with the *ab initio* value of $4.91 \text{ kcal mol}^{-1}$ obtained at the MP2/aug-cc-pvtz level including basis set correction errors.³⁹ Regarding the vibrational spectra, the interaction with Bz leads to a symmetry decrease and thus to a splitting of the degenerate modes of $(\text{H}_2\text{O})_8$. Interesting data to compare with literature experimental results are, firstly, the occurrence of a redshift of 55 cm^{-1} between the free OH stretch and the OH in π interaction with Bz. The experimental redshift^{37,38} is 63 cm^{-1} , *i.e.* our calculations underestimate the redshift by about 15 %, and we note that a larger redshift (88 cm^{-1}) was obtained at the MP2 level,³⁹ as expected from prior theoretical studies.⁴⁰ Regarding the antisymmetric double donor oxygen OH modes, the interaction with Bz results in a split of the degenerate modes resulting in two bands, one slightly redshifted (3 cm^{-1}) and one

blueshifted by 9 cm^{-1} (see data in Table 1).

Regarding the raw values of the frequencies, the comparison of our calculated value (3925 cm^{-1}) with the experimental value of the free OH mode resonance in $(\text{H}_2\text{O})_8$ (3713.5 cm^{-1}) results in a scaling factor of 0.946. This is entirely unsurprising due to the approximations inherent to the method – harmonic vibrations, approximate Hamiltonian with pre-computed pair integrals, and the minimal valence basis sets, in particular.³⁴ We insist on the fact that, despite the overestimation of the energy of the OH stretching mode at the DFTB level with respect to experimental data, a good description of PAH-water cluster and water-water intermolecular interactions is expected as they were parameterised on wavefunction *ab initio* calculations and benchmarked in previous studies.^{34,35,41} Therefore, the computed values of the wavenumber shifts induced by intermolecular interactions are reliable, as verified in the present study.

Results and discussion

The experimental IR spectra of pure pASW and mixed aromatic:water ices (Bz, Pyr, Anth, Cor) are presented in Figure 2. The spectrum of pASW (black) presents a wide band at $\sim 3300 \text{ cm}^{-1}$, corresponding to the ν_1 and ν_3 stretching vibrations, as well as two weak

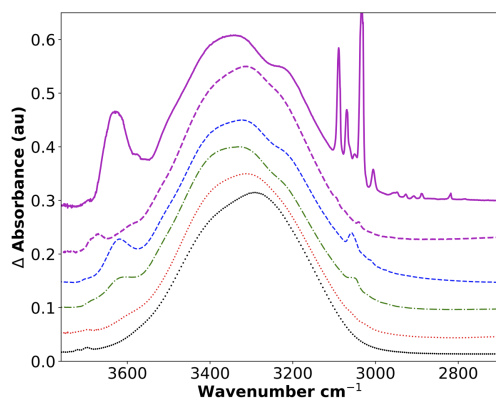


Figure 2: Experimental spectra of pASW (black dots), Cor:pASW (red dotted line), Pyr:pASW (green dash-dotted line), Anth:pASW (blue dashed line), and Bz:pASW ($\sim 3\%$ dotted and $\sim 50\%$ solid magenta lines) ices deposited at 15 K. All spectra are normalised to the maximum of the OH stretching mode, and offset for clarity.

dOH features in the blue wing.^{1,4} The addition of aromatic molecules to the ice gives rise to additional narrow features in the $3100\text{--}2800\text{ cm}^{-1}$ region (C-H stretches, coloured spectra) as well as modification of the dOH. In pure pASW, the dOH features are observed at 3720 and 3699 cm^{-1} . Upon introduction of aromatic molecules, the dOH bands are redshifted, with shift values of approximately 70 (Bz, 50%)/ 30 (Bz, 3%), 78 (Anth), 79 (Pyr), and 84 (Cor) cm^{-1} compared to the strongest dOH feature at 3699 cm^{-1} (Table 2). The influence of concentration upon the Bz-ice interaction is discussed in detail below.

As explained above, the theoretical descriptions of aromatic-ice systems (Bz, Anth, Pyr, Cor) include the electronic structure explicitly at the DFTB level. An example of an optimised PAH-ice structure is illustrated in Figure 3. A comprehensive list of calculated DFTB

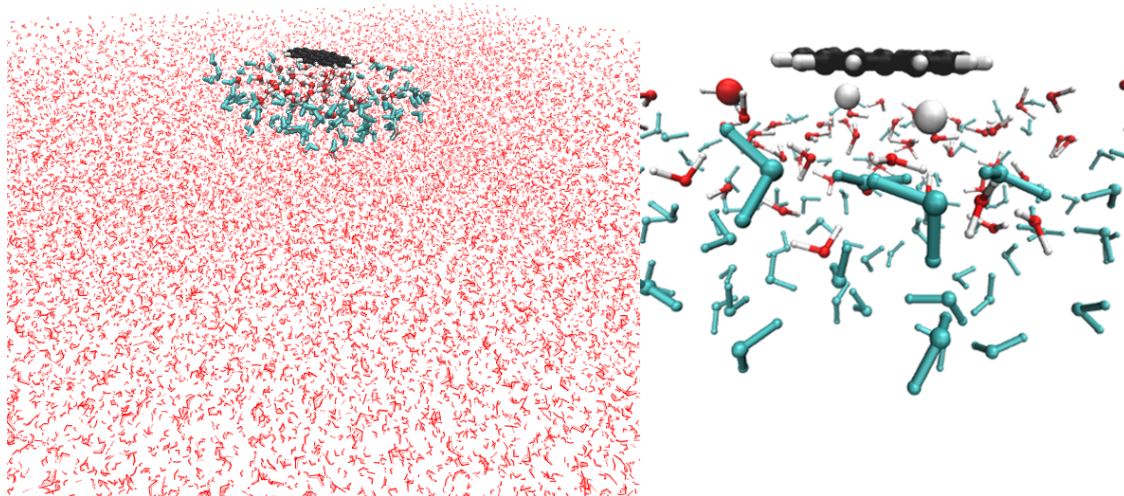


Figure 3: Molecular representations of the systems modelled with the multi-method approach,^{23,24} illustrated by the adsorption of coronene on amorphous ice. The left hand panel presents the full structure of coronene on LDA ice at 10K obtained from MD/FF calculations.²³ Molecules extracted for DFTB calculations are highlighted then magnified in the left and right panels, respectively. Water molecules in blue are fixed during DFTB optimisation and harmonic calculations, while the central 58 water molecules plus the coronene molecule remain mobile. The two white spheres are dOH in interaction with Cor.

values for dOH positions and redshifts for pure LDA and aromatic-LDA systems is reported in Table 2. The advantage of the theoretical approach presented here is its ability to compute vibrational modes for much larger systems than have been studied previously (i.e. C_2H_4 , CO, O_2 , and N_2 ^{14,42,43}), including molecules containing multiple aromatic rings, taking into consideration a sampling of geometries.

As can be observed by comparing the experimental and theoretical spectra (Figure 4), the theoretical methodology employed in this work is extremely successful in modelling the

Table 2: Shift of dOH position (in cm^{-1}) for aromatic-ASW systems compared to pure ASW, for theoretical LDA and experimental pASW. For the theoretical values, the shifts were computed from unscaled spectra, as detailed in the text. Two experimental values are given for benzene, corresponding to the two concentrations studied in this work. Experimental literature data for different deposition methods is given in italics for comparison.

Aromatic	δdOH theo.	δdOH our expt.	δdOH literature expt.
Bz	-74	-70 ($\sim 50\%$ Bz)	-79 (<i>mixed 50% Bz</i>), Dawes et al. ⁴⁴
		-30 ($\sim 3\%$ Bz)	-111 (<i>layered 3% Bz</i>), Silva & Devlin. ²⁰
Anth	-79	-78	–
Pyr	-77	-79	-112 (<i>layered</i>), Guennoun et al. ²²
Cor	-85	-84	-72 (<i>layered</i>), Guennoun et al. ²¹

Table 3: Computed positions of the dOH modes for the dangling OH in LDA alone, with an aromatic adsorbed on LDA (Aromatic-LDA), and the relative redshift values. Raw values are given in italics, with values scaled by 0.94 shown in normal type. All values are expressed in cm^{-1} . Positions are obtained from the mean position of the full width at half maximum. This approach yielded values very close to the average peak positions.

Aromatic	pure LDA	Aromatic-LDA	Redshift
Bz	<i>3934</i>	<i>3860</i>	74
	3701	3632	69
Anth	<i>3931</i>	<i>3852</i>	79
	3699	3624	75
Pyr	<i>3932</i>	<i>3855</i>	77
	3700	3627	73
Cor	<i>3930</i>	<i>3845</i>	85
	3698	3618	80

aromatic-ice interaction, reproducing to within a few cm^{-1} our experimental redshifts of dOH features for PAHs (see Table 2), with the redshift value increasing with the size of the adsorbed aromatic. It should be noted that the theoretical model also nicely replicates the adsorption-provoked broadening of the dOH band, providing confidence in the configuration sampling methodology. This effect is due to the variety of adsorption sites explored by the

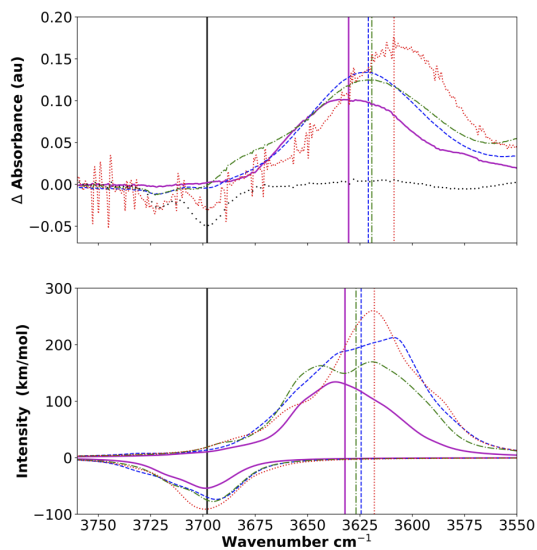


Figure 4: IR spectra in the dOH region. The upper panel presents experimental pASW spectra, while the theoretical LDA spectra are presented in the lower panel. In each case, pure ASW spectra (black dotted line) are plotted in negative values to ease comparison with the aromatic-ASW spectra (Bz-ASW, solid magenta line; Anth-ASW, dashed blue line; Pyr-ASW, green dash-dotted line; Cor-ASW, dotted red line). For the sake of clarity, experimental spectra are baseline-corrected with polynomials to remove the contribution of the bulk ice OH stretching band, then scaled for plotting (factors: 2.5 Bz-pASW, 1.0 Anth-pASW, 3.0 Pyr-pASW, 15 Cor-pASW, -6.0 pASW). Similarly, the theoretical spectra were derived by selecting only dOH stretching modes from the LDA and aromatic-LDA systems, scaled by a factor of 0.94 (obtained by matching the dOH mode position in pure LDA to the experimental one at $\sim 3699 \text{ cm}^{-1}$).

aromatic species at the ice surface. In fact, the interaction geometry is key in determining the IR signatures of binding between aromatics and water, as will be discussed below. These results confirm the capacity of our method to describe fine vibrational perturbation induced by weak intermolecular interactions. The approach has previously proven to be highly reliable in determining the adsorption energies and ionisation potentials of aromatic molecules (from Bz to ovalene) adsorbed on ice surfaces, with the values obtained reflecting surface

structural effects.²⁴ However, the successful description of perturbative effects on vibrations due to weak intermolecular interactions is even more challenging than the determination of energetic data.

Interestingly, when considering literature values for the redshifts observed in aromatic-ice systems, the simple mass-/size-dependent series that we determine in the current work is not necessarily evident. What is key to understanding these values is the differences in experimental methods used to produce the aromatic-ice systems. First, our result for Cor agrees relatively well with the previously published value obtained for layered ices using the same experimental setup, with the difference of $\sim 12 \text{ cm}^{-1}$ being attributed to the differing deposition methods (layered versus mixed ices).²¹ However, our Pyr result is 33 cm^{-1} blueshifted compared to a prior layered ice study.²² In this case, we attribute this difference to the low Pyr concentration in the previous study giving rise to uncertainty in the exact peak position of the dOH feature, and are confident that the experimental methodology applied in the present study ensures an accurate, reproducible measurement.

The case of Bz is more complex. If we consider the two experimental Bz:pASW spectra in Figure 2, we can observe that the presence of Bz is barely seen at the lower concentration of $\sim 3 \%$, with no Bz absorption features, and a redshift in the dOH of only $\sim 30 \text{ cm}^{-1}$. At

higher concentration ($\sim 50\%$), the presence of Bz is clearly observable via its bands in the 3100-2800 cm^{-1} region, and the induced shift in the dOH is increased to $\sim 70\text{ cm}^{-1}$.

Of the two experimental results that we identified in the literature for Bz-ASW interactions, our value of $\sim 70\text{ cm}^{-1}$ most closely resembles that of Dawes et al.⁴⁴ for mixed Bz:ASW in a 1:1 concentration ($\delta_{\text{dOH}} 79\text{ cm}^{-1}$). The redshift that we (and Dawes et al.) observe is, however, approximately two-thirds that obtained in the study of Silva & Devlin²⁰ (111 cm^{-1}). In that study, the derived bond energy between benzene and the water ice surface was estimated at 4.3 kcal mol^{-1} , *i.e.* twice the value between benzene and a single water molecule.²⁰ As for Pyr and Cor, we suspect that the source of this discrepancy is the varying deposition methods and relative concentrations applied in the different studies. In fact, if we also consider Bz-water cluster studies, the values of the dOH redshift can be determined to depend on both the size and geometry of the $(\text{H}_2\text{O})_n$ cluster interacting with Bz.^{37,38,40,45,46} With respect to the highest energy free OH mode, the dOH redshift was found to vary from 61 cm^{-1} ($n=3$) to 75 cm^{-1} ($n=7$),⁴⁵ with values of 69 and 64 cm^{-1} found for cubic-like structures ($n=8,9$).^{37,38,46}

It has been demonstrated⁴⁴ that varying the concentration of Bz in H_2O varies its interaction with the water ice surface and thus the redshifts observed. In our experiments, we

observe a small shift ($\sim 30 \text{ cm}^{-1}$) for a concentration of a few percent *i.e.* an equivalent concentration to the PAHs under consideration. This suggests that Bz is not fully interacting with the surface dOH at this low concentration, as this shift is of the same order as that observed for atoms or small (diatomic) molecules adsorbed on ASW.⁴ Perhaps at this low concentration all or most of the Bz molecules penetrate the ice and thus are not in interaction with the ice surface in pores. When we increase the concentration, we observe an increased shift in dOH to $\sim 70 \text{ cm}^{-1}$, suggesting that Bz is now interacting directly with the ice surface. It should be noted that at a ratio of 1:1, Bz must be interacting with water clusters, rather than being fully solvated, and thus this is more comparable to a single Bz adsorbing on an ASW surface, as in our calculations.

The variation in the dOH redshifts in Bz-(H₂O)_n and Bz-ice interactions highlights the primordial importance of local ice structure in the study of such phenomena, in agreement with a similar discussion in Dawes et al.⁴⁴ for Bz. This, in turn, influences the physical chemistry of the aromatics. For example, we have recently shown experimentally that the geometry of interaction governs the photoreactivity of Cor in water complexes.⁴⁷ Despite these factors, the size-dependent redshift augmentation observed in both our experimental and calculated spectra holds, whatever the Bz concentration.

An additional complication arises from the fact that the PAH may interact with other ice surface modes (dO, s4),^{1,4} rather than the dOH. In our calculations, this was observed most readily when comparing different geometries in the Bz-LDA and Cor-LDA systems and focusing on the dO feature. Firstly, the position of the dO in pure LDA was well reproduced by the theoretical approach, with the peak of the feature lying 150 cm^{-1} redward of the dOH at $\sim 3549\text{ cm}^{-1}$ (see Figures 5 and 6), in agreement with prior studies.^{4,5} From our modelling, as was observed for the dOH, the dO modes are typically redshifted upon PAH adsorption. This is illustrated for the cases of Bz and Cor in Figures 5 and 6, respectively. In most cases, interaction with the aromatic molecule induced a redshift of the dO band (by around $10\text{--}20\text{ cm}^{-1}$), as a result of the interaction of the oxygen lone pair with H atoms of the PAH.

In addition to the redshifts, which are the predominant result upon adsorption of an aromatic, blueshifts of the dO modes were also occasionally observed in our modelling. This is illustrated for examples of Bz and Cor adsorption, whose geometries are presented in Figures 7 and 8. Some data on the spectral features are reported in Table 4.

For Bz, a blueshift of the dO mode occurs only twice in our sample of 49 configurations, one example of which is illustrated in Figure 7. In these two particular configurations, the

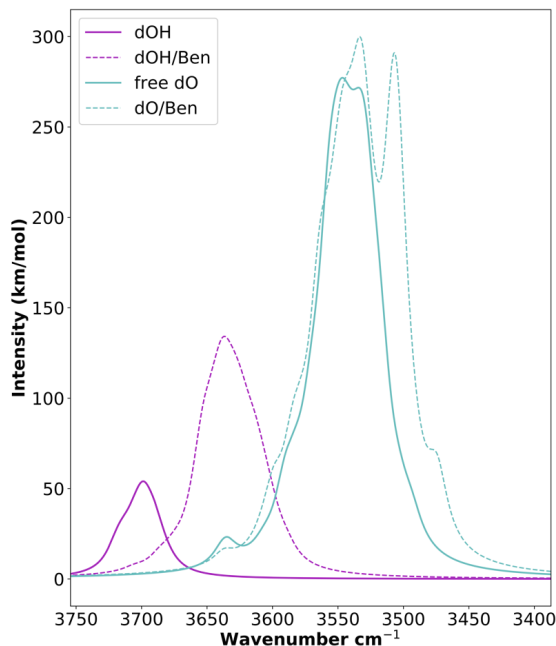


Figure 5: Computed IR bands of the dO (blue) and dOH (violet) modes of LDA ice before (continuous line) and after (dashed line) adsorption of one Bz molecule (averaged over all configurations). The raw DFTB wavenumbers are scaled by 0.94. Band positions are obtained from the mean position at full width half maximum. In pure LDA, the dOH and dO band positions are separated by 150 cm^{-1} (when scaling 0.94 is applied). Upon Bz adsorption, the dOH and dO bands are redshifted respectively by 74 (69 with 0.94 factor) cm^{-1} and 11 (10 with 0.94 factor) cm^{-1} .

blueshift is due to the breaking of one hydrogen bond between two water molecules due to the presence of benzene (*i.e.* a new O-H–benzene interaction).

Similarly to the case of Bz, we find that the adsorption of Cor on LDA can also lead to a blueshift of the dO mode. This again occurs only twice over our 49 configurations, and the two geometries are presented in Figure 8. In the first configuration, Cor₁, the blueshift is induced by the breaking of one hydrogen bond between two water molecules due to the presence of coronene (*i.e.* a new O-H–Cor interaction). In this geometry, a redshift is also

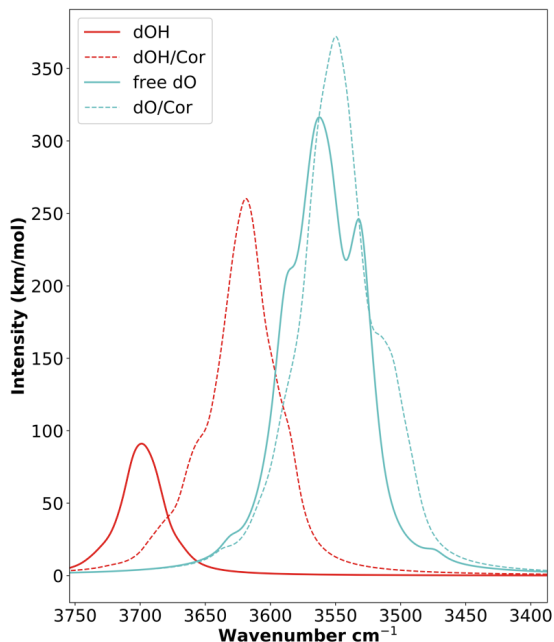


Figure 6: Computed IR bands of the dO (blue) and dOH (red) modes of LDA ice before (continuous line) and after (dashed line) adsorption of one Cor molecule (averaged over all configurations). The raw DFTB wavenumbers are scaled by 0.94. Band positions are obtained from the mean position at full width half maximum. In pure LDA, the dOH and dO band positions are separated by 149 cm^{-1} (when scaling 0.94 is applied). Upon Cor absorption, the dOH and dO bands are redshifted respectively by 85 (80 with 0.94 factor) cm^{-1} and 8 (8 with 0.94 factor) cm^{-1} .

induced in another dO (labelled in green in Figure 8). In the second configuration, Cor_2 , the blueshift is due to a repulsive interaction between the oxygen of the closest water molecule and one carbon belonging to the coronene.

The specific geometries highlighted above are observed to give rise to blueshifts on the order of $20\text{--}30\text{ cm}^{-1}$. In these rare cases, a carbon atom of the PAH molecule is in interaction with the O atom of the water molecule, suggesting that ices or clusters containing such geometries could exhibit blueshifted dO features. It should be reiterated here that, in

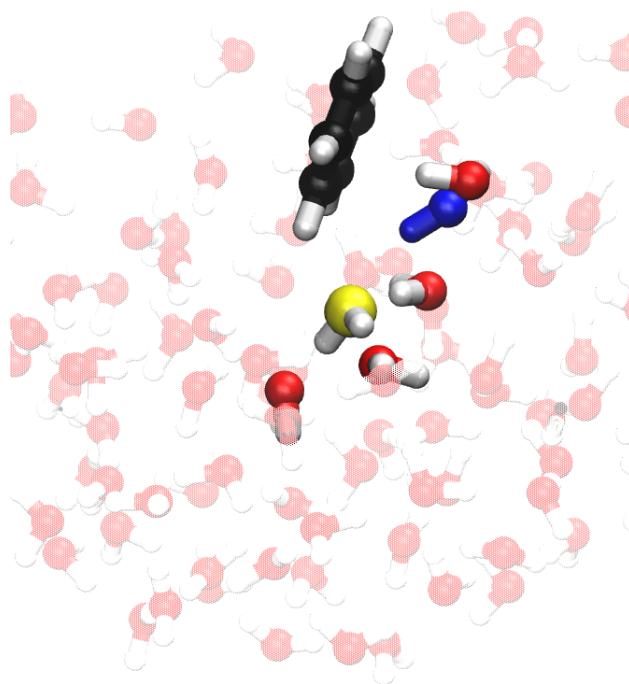


Figure 7: Superimposed configurations of LDA with and without a molecule of Bz adsorbed on the surface. Each configuration is in its local minimum, and the molecules which are perturbed by the adsorption are magnified and presented in bright colours. The water molecule which is perturbed the most due to the adsorption of the Bz is represented in blue. The oxygen atom with the highest contribution to the blueshifted dO mode is represented in yellow.

our calculations, the aromatic molecules almost always favour interaction with a dOH, and the aromatic-dO interactions were noted to occur significantly more rarely than the more favourable aromatic-dOH interactions (two configurations out of 49 each for Bz and Cor). It is interesting to note, however, that, in these dO interaction configurations, reduction of the bond order of the interacting H₂O molecule is also observed *i.e.* intermolecular water-water hydrogen bonds are broken, indicating that adsorption of PAHs, although weak, can perturb

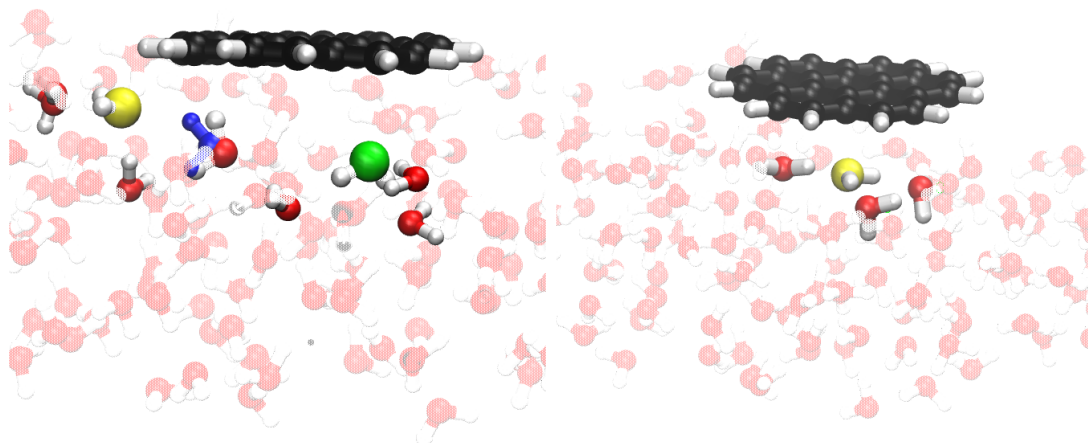


Figure 8: Superimposed configurations of LDA with and without the coronene molecule adsorbed for Configurations Cor₁ (left) and Cor₂ (right). Each configuration is in its local minimum. Molecules which are perturbed by the adsorption are magnified and presented in bright colours. The water molecule which is perturbed the most due to the adsorption of the coronene is represented in blue. The oxygen atom with the greatest contribution to the blueshifted dO mode is represented in yellow while that in green (Configuration Cor₁ only) contributes the most to the redshifted dO mode.

the ice surface to the point of disrupting the H-bonding network and thus interact directly with dO adsorption sites despite their large size. This will be discussed in more detail in a forthcoming article (Noble et al. *in prep.*).

Conclusion

Despite the complexity of varying aromatic-ice interactions arising from bonding preferences, the key conclusion of this work is that our novel theoretical methodology describing PAH-

Table 4: Wavenumbers (unscaled, in cm^{-1}) and intensities (in km mol^{-1}) of the dO modes of LDA, isolated and upon adsorption of benzene and coronene, with the most important contributions to the dO blueshift for the four representative configurations detailed in the text.

	Wavenumber	Intensity	Wavenumber	Intensity
Config.	Bz-LDA		LDA	
Bz ₁	3825	1252	3778	1345
Bz ₂	3811	650	3776	131
Config.	Cor-LDA		LDA	
Cor ₁	3710	1030	3691	281
	3773	744	3780	669
Cor ₂	3779	290	3759	386

ice interaction^{23,24} is further validated by its ability to accurately model the redshift and widening of the dOH feature of ASW due to the adsorption of PAHs. Our results highlight the relevance of the configuration sampling approach, wherein averaging the IR harmonic spectra over several tens of configurations reproduces IR band broadening. We clearly confirm that single geometry studies are not sufficient to capture the full range of interactions between an ice surface and a large molecule, and that interaction geometry is a critical issue which must be taken into consideration when studying adsorption and diffusion processes.

This study potentially offers new hope, both for detecting the dOH in icy grain mantles and providing an indicator for the presence of PAHs in space. Although it will not be possible to distinguish individual molecules via this method, we show that it is the dOH feature of the ice that is the most likely “probe” of the presence of PAHs, rather than IR bands of PAH

molecules themselves, which typically present only small shifts.²⁵ When we consider only low mass aromatics (up to about four rings), we are able to distinguish between PAHs of different masses (*i.e.* Anth induces a larger redshift than Bz), but as we increase in PAH size, the redshift values converge. It is likely that the dOH signature – if observed in interstellar ices – will be averaged across interaction with PAHs estimated to be in the C₅₀-C₁₀₀ range,¹⁶ and, as such, the dOH will appear at an average redshift value. The width of the band will be large, and thus it will have a low signal to noise, helping to explain why it has not yet been observed. With the launch of the James Webb Telescope (JWST) imminent, thanks to its high spectral and spatial resolution we will soon have the first opportunity to observe the dOH feature in low-mass star forming regions, affording the chance to answer many outstanding questions on the composition and structure of interstellar ASW.

Acknowledgement

This work has been funded by the French Agence Nationale de la Recherche (ANR) project “PARCS” ANR-13-BS08-0005, with support from the French research network EMIE (Edifices Moléculaires Isolés et Environnés, GDR 3533), and the French Programme National “Physique et Chimie du Milieu Interstellaire” (PCMI) of the CNRS/INSU with the INC/INP,

co-funded by the CEA and the CNES. E.M. and A.S. acknowledge the computing facility CALMIP at the Paul Sabatier University in Toulouse.

References

- (1) Buch, V.; Devlin, J. P. Spectra of Dangling OH Bonds in Amorphous Ice: Assignment to 2 and 3 Coordinated Surface Molecules. *J. Chem. Phys.* **1991**, *94*, 4091-4092.
- (2) Rowland, B.; Fisher, M.; Devlin, J. P. Probing Icy Surfaces with the Dangling OH Mode Absorption: Large Ice Clusters and Microporous Amorphous Ice. *J. Chem. Phys.* **1991**, *95*, 1378-1384.
- (3) Rowland, B.; Kadagahur, N. S.; Devlin, J. P.; Buch, V.; Feldman, T.; Wojcik, M. J. Infrared Spectra of Ice Surfaces and Assignment of Surface Localized Modes from Simulated Spectra of Cubic Ice. *J. Chem. Phys.* **1995**, *102*, 8328-8341.
- (4) Devlin, J. P.; Buch, V. Surface of Ice as Viewed from Combined Spectroscopic and Computer Modeling Studies. *J. Phys. Chem.* **1995**, *99*, 16534-16548.
- (5) Noble, J. A; Martin, C.; Fraser, H. J.; Roubin, P.; Coussan, S. Unveiling the Sur-

- face Structure of Amorphous Solid Water via Selective Infrared Irradiation of OH Stretching Modes. *J Phys. Chem. Lett.* **2014**, *5*, 826.
- (6) Boogert, A. C. A.; Gerakines, P. A.; Whittet, D. C. B. Observations of the Icy Universe. *Annu. Rev. Astron. Astrophys.* **2015**, *53*, 541.
- (7) Keane, J. V.; Boogert, A. C. A.; Tielens, A. G. G. M.; Ehrenfreund, P.; Schutte, W. A. Bands of solid CO₂ in the 2–3 μm spectrum of S 140:IRS1. *Astron. Astrophys.* **2001**, *375*, L43.
- (8) Dulieu, F.; Amiaud, L.; Congiu, E.; Fillion, J.-H.; Matar, E.; Momeni, A.; Pirronello, V.; Lemaire, J. L. Experimental Evidence for Water Formation on Interstellar Dust Grains by Hydrogen and Oxygen Atoms. *Astron. Astrophys.* **2010**, *512*, A30.
- (9) Palumbo, M. E. Formation of Compact Solid Water after Ion Irradiation at 15 K. *Astron. Astrophys.* **2006**, *453*, 903-909.
- (10) Accolla, M.; Congiu, E.; Dulieu, F.; Manicò, F.; Chaabouni, H.; Matar, E.; Mokrane, H.; Lemaire, J. L.; Pirronello, V. Changes in the Morphology of Interstellar Ice Analogues after Hydrogen Atom Exposure. *Phys. Chem. Chem. Phys.* **2011**, *13*, 8037-8045.

- (11) Noble, J. A.; Martin, C.; Fraser, H. J.; Roubin, P.; Coussan, S. IR Selective Irradiations of Amorphous Solid Water Dangling Modes: Irradiation vs Annealing Effects. *J Phys. Chem. C* **2014**, *118*, 20488.
- (12) Dartois, E.; Augé, B.; Boduch, P.; Brunetto, R.; Chabot, M.; Domaracka, A.; Ding, J. J.; Kamalou, O.; Lv, X. Y.; Rothard, H.; da Silveira, E. F.; Thomas, J. C. Heavy Ion Irradiation of Crystalline Water Ice. Cosmic Ray Amorphisation Cross-section and Sputtering Yield. *Astron. Astrophys.* **2015**, *576*, A125.
- (13) Mejía, C.; de Barros, A. L. F.; Seperuelo Duarte, E.; da Silveira, E. F.; Dartois, E.; Domaracka, A.; Rothard, H.; Boduch, P. Compaction of Porous Ices Rich in Water by Swift Heavy Ions. *Icarus* **2015**, *250*, 222.
- (14) Manca, C.; Allouche, A. Quantum Study of the Adsorption of Small Molecules on Ice: The Infrared Frequency of the Surface Hydroxyl Group and the Vibrational Stark Effect. *J. Chem. Phys.*, **2001**, *114*, 4226-4234.
- (15) Martin, C.; Manca, C.; Roubin, P. Adsorption of Small Molecules on Amorphous Ice: Volumetric and FT-IR Isotherm Co-measurements Part I. Different Probe Molecules. *Surf. Sci.* **2002**, *502*, 275-279.

- (16) Tielens, A. G. G. M. The Molecular Universe. *Rev. Mod. Phys.* **2013**, *85*, 1021.
- (17) Herbig, G. H. Diffuse Interstellar Bands. *Annu. Rev. Astron. Astrophys.* **1995**, *33*, 1973.
- (18) Salama, F.; Galazutdinov, G. A.; Krelowski, J. et al. Polycyclic Aromatic Hydrocarbons and the Diffuse Interstellar Bands: A Survey. *Astrophys. J.* **2011**, *728*, 154.
- (19) Boogert, A.C.A., Pontoppidan, K.M., Knez, C., et al. The c2d Spitzer Spectroscopic Survey of Ices around Low-Mass Young Stellar Objects. I. H₂O and the 5-8 μ m Bands. *Astrophys. J.* **2008**, *678*, 985.
- (20) Silva, S. C.; Devlin, J. P. Interaction of Acetylene, Ethylene, and Benzene with Ice Surfaces. *J. Phys. Chem.* **1994**, *98*, 10847.
- (21) Guennoun, Z.; Aupetit, C.; Mascetti, J. Photochemistry of Coronene with Water at 10 K: First Tentative Identification by Infrared Spectroscopy of Oxygen Containing Coronene Products. *Phys. Chem. Chem. Phys.* **2011**, *13*, 7340-7347.
- (22) Guennoun, Z.; Aupetit, C.; Mascetti, J. Photochemistry of Pyrene with Water at Low

- Temperature: Study of Atmospheric and Astrochemical Interest. *J. Phys. Chem. A* **2011**, *115*, 1844-1852.
- (23) Michoulier, E.; Noble, J. A.; Simon, A.; Mascetti, J.; Toubin, C. Adsorption of PAHs on Interstellar Ice Viewed by Classical Molecular Dynamics. *Phys. Chem. Chem. Phys.* **2018**, *20*, 8753.
- (24) Michoulier, E.; Ben Amor, N.; Rapacioli, M.; Noble, J. A.; Mascetti, J.; Toubin, C.; Simon, A. Theoretical Determination of Adsorption and Ionisation Energies of Polycyclic Aromatic Hydrocarbons on Water Ice. *Phys. Chem. Chem. Phys.* **2018**, *20*, 11941.
- (25) Simon, A.; Noble, J. A.; Rouaut, G.; Moudens, A.; Aupetit, C.; Iftner, C.; Mascetti, J. Formation of Coronene:water Complexes: FTIR Study in Argon Matrices and Theoretical Characterisation. *Phys. Chem. Chem. Phys.* **2017**, *19*, 8516.
- (26) Bouwman, J.; Mattioda, A. L.; Linnartz, H.; Allamandola, L. J. Photochemistry of Polycyclic Aromatic Hydrocarbons in Cosmic Water Ice I. Mid-IR Spectroscopy and Photoproducts. *Astronom. Astrophys.* **2011**, *525*, A93.
- (27) Cook, A. M.; Ricca, A.; Mattioda, A. L., et al. Photochemistry of Polycyclic Aro-

- matic Hydrocarbons in Cosmic Water Ice: The Role of PAH Ionization and Concentration. *Astrophys. J.* **2015**, *799*, 14.
- (28) de Barros, A. L. F.; Mattioda, A. L.; Ricca, A.; Cruz-Diaz, G. A.; Allamandola, L. J. Photochemistry of Coronene in Cosmic Water Ice Analogs at Different Concentrations. *Astrophys. J.* **2017**, *848*, 112.
- (29) Yamada, H.; Saheki, M. Infrared ATR Measurements at Low Temperatures. An Apparatus and the Absorption Intensities of Crystalline Benzene and Carbon Disulfide. *Bull. Chem. Soc. Jpn.* **1983**, *56*, 35.
- (30) Elstner, M.; Porezag, D.; Jungnickel G.; Elsner, J.; Haugk, M.; Frauenheim, Th.; Suhai, S.; G. Seifert, G. Self-Consistent-Charge Density- Functional Tight-Binding Method for Simulations of Complex Material Properties. *Phys. Rev. B* **1998**, *58*, 7260.
- (31) Li, J.; Zhu, T.; Cramer, C. J.; Truhlar, D. G. New Class IV Charge Model for Extracting Accurate Partial Charges from Wave Functions. *J. Phys. Chem. A* **1998**, *102*, 1820-1831.
- (32) Rapacioli, M.; Spiegelman, F.; Talbi, D.; Mineva, T.; Goursot, A.; Heine, T.; Seifert,

- G. Correction for Dispersion and Coulombic Interactions in Molecular Clusters with Density Functional Derived Methods: Application to Polycyclic Aromatic Hydrocarbon Clusters. *J. Chem. Phys.* **2009**, *130*, 244304–10.
- (33) Joalland, B.; Rapacioli, M.; Simon, A.; Joblin, C.; Marsden, C. J.; Spiegelman, F. Molecular Dynamics Simulations of Anharmonic Infrared Spectra of [SiPAH] pi-Complexes. *J. Phys. Chem. A* **2014**, *114*, 5846-5854.
- (34) Simon, A.; Rapacioli, M.; Mascetti, J.; Spiegelman, F. Vibrational Spectroscopy and Molecular Dynamics of Water Monomers and Dimers Adsorbed on Polycyclic Aromatic Hydrocarbons. *Phys. Chem. Chem. Phys.* **2012**, *14*, 6771-6786.
- (35) Simon, A.; Spiegelman, F. Water Clusters Adsorbed on Polycyclic Aromatic Hydrocarbons: Energetics and Conformational Dynamics. *J. Chem. Phys.* **2013**, *138*, 194309.
- (36) Simon, A.; Rapacioli, M.; Michoulier, E.; Zheng, L.; Korchagina, K.; Cuny, J. Contribution of the Density-Functional based Tight-Binding Scheme to the Description of Water Clusters: Methods, Applications and Extension to Bulk Systems *Mol. Sim.* **2019**, *45*, 249-268.
- (37) Gruenloh, C. J.; Carney, J. R.; Arrington, C. A.; Zwier, T. S.; Fredericks, S. Y.;

- Jordan, K. D. Infrared Spectrum of a Molecular Ice Cube: The S_4 and D_{2d} Water Octamers in Benzene-(Water) $_8$. *Science* **1997**, *276*, 1678.
- (38) Gruenloh, C. J.; Carney, J. R.; Hagemester, F. C.; Arrington, C. A.; Zwier, T. S.; Fredericks, S. Y.; Wood, J. T.; Jordan, K. D. Resonant Ion-dip Infrared Spectroscopy of the S_4 and D_{2d} water octamers in benzene-(water) $_8$ and benzene $_2$ -(water) $_8$. *J. Chem. Phys.* **1998**, *109*, 6601.
- (39) Miliordos, E.; Apra E.; Xantheas, S. S. A New, Dispersion-Driven Intermolecular Arrangement for the Benzene-Water Octamer Complex: Isomers and Analysis of their Vibrational Spectra. *J. Chem. Theory Comput.* **2016**, *12*, 4004.
- (40) Fredericks, S. Y.; Jordan, K. D.; Zwier, T. S. Theoretical Characterization of the Structures and Vibrational Spectra of Benzene-(H $_2$ O) $_n$ (n=1-3) Clusters. *J. Phys. Chem.* **1996**, *100*, 7810.
- (41) Oliveira, L.; Fernando L.; Cuny, J.; Moriniere, M.; Dontot, L.; Simon, A.; Spiegelman, F.; Rapacioli, M. Phase Changes of the Water Hexamer and Octamer in the Gas Phase and Adsorbed on Polycyclic Aromatic Hydrocarbons. *Phys. Chem. Chem. Phys.* **2015**, *17*, 17079-17089.

- (42) Hujo, W.; Gaus, M.; Schultze, M.; Kubar, T.; Grunenberg, J.; Elstner, M.; Bauerecker, S. Effect of Nitrogen Adsorption on the Mid-Infrared Spectrum of Water Clusters. *J. Phys. Chem. A* **2011**, *115*, 6218-6225.
- (43) Pezzella, M.; Unke, O.T.; Meuwly M. Molecular Oxygen Formation in Interstellar Ices Does Not Require Tunneling. *J Phys. Chem. Lett.* **2018**, *8*, 1822-1826.
- (44) Dawes, A.; Pascual, N.; Mason, N. J.; Gärtner, S.; Hoffmann, S. V.; Jones, N. C. Probing the Interaction between Solid Benzene and Water using Vacuum Ultraviolet and Infrared Spectroscopy. *Phys. Chem. Chem. Phys.* **2018**, *20*, 15273.
- (45) Pribble, R. N.; Zwier, T. S. Size-Specific Infrared Spectra of Benzene-(H₂O)_n Clusters (n = 1 through 7): Evidence for Noncyclic (H₂O)_n Structures. *Science* **1994**, *265*, 75-79.
- (46) Gruenloh, C. J.; Carney, J. R.; Hagemester, F. C.; Zwier, T. S.; Wood, J. T.; Jordan, K. D. Resonant Ion-dip Infrared Spectroscopy of bzw9: Expanding the Cube. *J. Chem. Phys.* **2000**, *113*, 2290.
- (47) Noble, J. A.; Jouvét, C.; Aupetit, C.; Moudens, A.; Mascetti, J. Efficient Photochemistry of Coronene:water Complexes. *Astron. Astrophys.* **2017**, *599*, A124.

Graphical TOC Entry

