



HAL
open science

Two-dimensional distribution of living benthic foraminifera in anoxic sediment layers of an estuarine mudflat (Loire estuary, France)

A. Thibault de Chanvalon, E. Metzger, Aurélia Mouret, F. Cesbron, J. Knoery, E. Rozuel, P. Launeau, Maria Pia Nardelli, F. Jorissen, E. Geslin

► To cite this version:

A. Thibault de Chanvalon, E. Metzger, Aurélia Mouret, F. Cesbron, J. Knoery, et al.. Two-dimensional distribution of living benthic foraminifera in anoxic sediment layers of an estuarine mudflat (Loire estuary, France). *Biogeosciences*, 2015, 12, pp.1 - 16. <10.5194/bg-12-6219-2015>. <hal-02442538>

HAL Id: hal-02442538

<https://hal.science/hal-02442538v1>

Submitted on 16 Jan 2020

HAL is a multi-disciplinary open access archive for the deposit and dissemination of scientific research documents, whether they are published or not. The documents may come from teaching and research institutions in France or abroad, or from public or private research centers.

L'archive ouverte pluridisciplinaire **HAL**, est destinée au dépôt et à la diffusion de documents scientifiques de niveau recherche, publiés ou non, émanant des établissements d'enseignement et de recherche français ou étrangers, des laboratoires publics ou privés.



HAL Authorization




Two-dimensional distribution of living benthic foraminifera in anoxic sediment layers of an estuarine mudflat (Loire estuary, France)

A. Thibault de Chanvalon^{1,2}, E. Metzger¹, A. Mouret¹, F. Cesbron¹, J. Knoery², E. Rozuel², P. Launeau¹, M. P. Nardelli¹, F. J. Jorissen¹, and E. Geslin¹

¹Université d'Angers, Université de Nantes, LPG-BIAF, UMR CNRS 6112, 49045 Angers Cedex, France

²Ifremer, LBCM, Rue de l'Île d'Yeu, 44300 Nantes, France

Correspondence to: A. T. de Chanvalon (athibaultdc@gmail.com, aubin.thibault-de-chanvalon@univ-nantes.fr)

Received: 5 June 2015 –  nished in Biogeosciences Discuss.: 8 July 2015

Accepted: 18 October 2015 – Published:

Abstract. We present a new rapid and accurate protocol to simultaneously sample benthic living foraminifera in two dimensions in a centimetre-scale vertical grid and dissolved iron and phosphorus in two dimensions at high resolution (200 μm). Such an approach appears crucial for the study of foraminiferal ecology in highly dynamic and heterogeneous sedimentary systems, where dissolved iron shows a strong variability at the centimetre scale. On the studied intertidal mudflat of the Loire estuary, foraminiferal faunas are dominated by *Ammonia tepida*, which accounts for 92 % of the living (CellTracker Green(CTG)-labelled) assemblage. The vertical distribution shows a maximum density in the oxygenated 0–0.4 cm surface layer. A sharp decrease is observed in the next 2 cm, followed by a second, well-defined maximum in the suboxic sediment layer (3–8 cm depth). The presented method yields new information concerning the 2-D distribution of living *A. tepida* in suboxic layers. First, the identification of recent burrows by visual observation of the sediment cross section and the burrowing activity as deduced from the dissolved iron spatial distribution show no direct relation to the distribution of *A. tepida* at the centimetre scale. This lack of relation appears contradictory to previous studies (Aller and Aller, 1986; Berkeley et al., 2007). Next, the heterogeneity of *A. tepida* in the 3–8 cm depth layer was quantified by means of Moran's index to identify the scale of parameters controlling the *A. tepida* distribution. The results reveal horizontal patches with a characteristic length of 1–2 cm. These patches correspond to areas enriched in dissolved iron likely generated by anaerobic degradation of la-

bile organic matter. These results suggest that the routine application of our new sampling strategy could yield important new insights about foraminiferal life strategies, improving our understanding of the role of these organisms in coastal marine ecosystems.

1 Introduction

Intertidal estuarine mudflats are transitional areas between land and sea. This intermediate position explains the important horizontal, vertical (in the sediment column) and temporal heterogeneities in physical and chemical sediment properties. It also causes heterogeneous ecological niches with scales ranging from micro- to hectometres. When studying such heterogeneous environments, the observational scale has to be chosen as a function of the scale of the studied ecological niche variability (Wu et al., 2000; Morse et al., 2003; Martiny et al., 2006; Wu and Li, 2006). This is a fundamental prerequisite to further identify potential parameters controlling the heterogeneity of the niches.

Ecological studies of benthic foraminifera attempt to describe the main factors controlling foraminiferal communities, as well as their variability on different spatial and temporal scales (Buzas et al., 2015). The best described pattern concerns the spatial variability of their vertical distribution in open marine environments, on a 100 km scale. The conceptual model proposed by Jorissen et al. (1995) considers a regional variability of the spatial organization of foraminiferal



taxa in the sediment column, where they occur in a succession of so-called microhabitats. The stratified succession of inhabited sediment layers is supposed to be a response to oxygen and organic matter availability, which changes not only vertically in the uppermost sediment but also geographically, when changing from oligotrophic (deep water, offshore) to eutrophic (shallow water, nearshore) conditions. In estuarine areas, on smaller scales, other major controls are invoked (e.g. emersion time, grain size, salinity), but they are less well documented. At the kilometre scale, the salinity, salinity variations and more generally the frequency of chemical exchanges with the ocean are often invoked as controls of foraminiferal assemblages (Debenay and Guillou, 2002; Debenay et al., 2006). Within the estuary, especially in cross-shore transects, emersion time seems to be a major controlling factor of species distribution at the decametre scale (Berkeley et al., 2007). But other parameters, such as grain size, pH or organic carbon lability, could also have a significant impact. Estuarine foraminiferal faunas seem to show substantial patchiness at the metre scale at the sediment surface (Buzas, 1970; Hohenegger et al., 1989; Buzas et al., 2002, 2015). At the decimetre scale, the rare studies performed on intertidal mudflats highlight that grain size and topography could be important controls (Lynts, 1966; Morvan et al., 2006).

Finally, according to our knowledge, only three publications have analysed the spatial surface organization at the centimetre scale, using an adequate sampling grid (Buzas, 1968, in Rehoboth Bay, Delaware; Olsson and Eriksson, 1974, on the Swedish coast; and de Nooijer, 2007, in the Wadden Sea). These three studies show that foraminiferal densities present a patchy distribution. Buzas (1968) hypothesized that this could be due to individual reproduction, leading to very localized and intermittent density maxima, so-called “pulsating patches” (Buzas et al., 2015). Another field approach, at the centimetre scale, is to sample around inhabited burrows, using a non-regular sampling scale, by defining position, size and shape of each sample according to the burrow geometry. In this way Aller and Aller (1986) and Thomsen and Altenbach (1993) studied the foraminiferal distribution around macrofaunal burrows at subtidal stations and observed a 3-fold enrichment of foraminiferal density in the burrow walls. With a similar sampling strategy, Koller et al. (2006) showed a 300-fold enrichment of foraminiferal densities in the burrow walls of an intertidal station. These studies highlight the importance of macrofaunal activity at the centimetre scale as a potential control of foraminiferal spatial organization. They suggest the presence of oxic microenvironments around the burrows generated by bioirrigation, attractive because of organic matter enrichment (Aller and Aller, 1986). Foraminifera could specifically colonize these environments favourable for aerobic respiration and therefore be found at depths below oxygen penetration.

However, another possible explanation for the presence of rich foraminiferal faunas in deeper anoxic layers could be the

ability of some species to switch to alternative (e.g. anaerobic) metabolisms (Leutenegger and Hansen, 1979; Bernhard and Alve, 1996; Risgaard-Petersen et al., 2006; Heinz and Geslin, 2012). These two possible mechanisms lead to contrasting conclusions concerning ecological strategies. For example, a high density of living foraminifera along burrow walls compared to anoxic surrounding sediments may be explained by a positive response of the foraminiferal community to the availability of oxygen and labile organic matter (Aller and Aller, 1986; Loubere et al., 2011) or as the involuntary consequence of passive downward transport due to macrofaunal bioturbation followed by the development of a short-term survival strategy based on a metabolism modification (Douglas, 1981; Alve and Bernhard, 1995; Moodley et al., 1998). In situ distribution can answer this question by determining whether subsurface high density is only concomitant with burrows or whether living *A. tepida* are able to modify their metabolism in order to survive in suboxic environments (without both oxygen and sulfide) independently of burrows. Unfortunately, the sampling strategies used in the above-mentioned references did not allow for establishing the importance of burrows compared to other environmental physico-chemical parameters because the increased density observed in burrow walls was not compared to a “background heterogeneity” at the same scale. This precaution is necessary, especially when the increase in foraminiferal density is not at least of 1 order of magnitude. Consequently, a large uncertainty remains about the ubiquity and the nature of macrofauna-independent mechanisms that could cause foraminiferal heterogeneity.

The recent development of pore water sampling techniques with high resolution in two dimensions offers the advantage of providing simultaneously geochemical information on vertical and horizontal submillimetre scales (Stockdale et al., 2009; Santner et al., 2015). Several studies have evidenced important spatial variability of dissolved iron release into pore water (Jézéquel et al., 2007; Robertson et al., 2008; Zhu and Aller, 2012; Cesbron et al., 2014). This can be due to iron oxide consumption caused by local labile organic matter patches that favour anaerobic respiration (by dissimilatory bacteria; Lovley, 1991) or by enhancement of sulfide transport from the deeper layers through burrows and subsequent abiotic dissolution (Berner, 1970). Conversely, macrofaunal water renewal is also likely to bring oxic water into the burrows, which consumes reduced dissolved iron and replenishes the stock of iron oxide. Direct burial of iron oxide by macrofauna may also contribute to the replenishment (Burdige, 2011). The overall role of macrofaunal activity on the sedimentary iron cycle is still unclear (Thibault de Chanvalon et al., 2015; Robertson et al., 2009). Phosphorus is also likely to have a heterogeneous geochemical pattern. Very marked centimetre-scale patches have been reported (Cesbron et al., 2014), apparently due to nutrient recycling from organic matter. However, iron oxide dissolution can also release adsorbed phosphorus according to a P / Fe ratio of up to

~ 0.2 (based on ascorbate extractions; Anschutz et al., 1998), which can be compared to the theoretical anaerobic respiration ratio of P/Fe ~ 0.002 (Froelich et al., 1979). Using geochemical fingerprints, the combination of submillimetre resolution analyses of dissolved iron and phosphorus is thus likely to (1) confirm the burrow activity (iron oxidation) and (2) identify potential hotspots of organic matter consumption (phosphorus production independent of iron).

In the present paper, we present a new two-dimensional sampling technique allowing (1) the investigation of the relation between benthic foraminifera and dissolved iron, (2) analysis of the heterogeneity of foraminiferal distribution and (3) identification of the scale of potential controls such as active burrows or labile organic matter patches.

2 Material and methods

2.1 Site description

The Loire estuary (NW coast of France) is hyper-synchronous: it shows an increasing tidal range upstream (Le Floch, 1961) reaching a maximum spring tidal range of about 7 m at 40 km from the mouth. At Donges (in the high tidal range area, right shore) the daily surface salinity range is about 20. Seasonally, surface salinity fluctuates from 0 during floods to 30 during low-water periods (SYVEL network, GIP Loire Estuaire). On the opposite shore, the largest mudflat of the estuary (“Les Brillantes”, ~ 1350 ha) extends downstream from the city of Paimbœuf. During high tide, hydrodynamics (tide, wind-induced waves, flow) constrain the sediment deposition/resuspension cycle, whereas during low tide, biological factors (bioturbation, biofilm stabilization, benthic primary production; Round, 1964; Vader, 1964; Paterson, 1989) become more important and generate sediment burial and chemical transformations. Microphyto-benthic biofilms vary annually between 20 in January and 60 mg m^{-2} in July (Benyoucef et al., 2014). Our sampling site ($47^{\circ}16'56.00''$ N, $2^{\circ}3'47.00''$ W) is located on Les Brillantes mudflat, below the mean high water neap tide (MH-WNT) level, about 20 m offshore from an active 1 m high eroded cliff. Sediment is mainly composed of silt (92%), with some clay (6%) and sand (2%) (Benyoucef, 2014).

We sampled in May 2013, 2 weeks after a major flood (discharge volume at Paimbœuf $> 2500 \text{ m}^3 \text{ s}^{-1}$, hydro.eaufrance.fr). During sampling, the river discharge was $835 \text{ m}^3 \text{ s}^{-1}$ on average. Air temperature was 12.7°C , the weather was cloudy, and salinity in the surface waters of the main channel ranged from 0.6 to 20 (data from SYVEL network). Sediment samples were collected at the beginning of low tide. Porosity decreased from 0.917 to 0.825 in the first 5 cm (Thibault de Chanvalon et al., in preparation). The calcite saturation state, calculated from alkalinity, sodium and calcium concentrations and pH (Millero, 1979, 1995; Mucci, 1983; Boudreau, 1996; Mucci et al., 2000; Hofmann et al.,

2010) was above 1.0 until 9 cm depth (data not shown). The macrofauna was mainly composed of *Hediste diversicolor* (Annelida: Polychaeta, $630 \text{ individuals m}^{-2}$) and *Scrobicularia plana* (Mollusca: Bivalvia, $70 \text{ individuals m}^{-2}$) (I. Métais, personal communication, 2015).

2.2 1-D sampling and processing

Four cylindrical cores (diameter 8.2 cm) were sampled using Plexiglas tubes. The first two cores were dedicated to foraminiferal analysis and were sliced immediately after sampling: every 2 mm from 0 to 2 cm and every half centimetre between 2 and 5 cm. Surface microtopography induces high uncertainty in the volume of the upper slice. Within 1 h after retrieval, in order to distinguish living foraminifera, sediments were incubated with the staining molecule CellTracker™ Green (CTG) in a final concentration of $1 \mu\text{mol L}^{-1}$ in 50 mL of estuarine water for 10–19 h (Bernhard et al., 2006). CTG is a non-fluorescent molecule which is hydrolysed by nonspecific esterases, producing a fluorescent compound. After incubation, samples were fixed in 3.8% borax-buffered formalin and stored until analysis. In the laboratory, samples were sieved over 315, 150, 125 and $63 \mu\text{m}$ meshes, and the 150–315 μm fraction was examined using an epifluorescence stereomicroscope (i.e. 485 nm excitation, 520 nm emission; Olympus ZX12 with a fluorescent light source (Olympus U-RFL-T) or Nikon SMZ 1500 with a PRIOR Lumen 200). All foraminifera that fluoresced continuously and brightly were wet-picked, air-dried, identified and counted.

The two other cores were used to constrain geochemistry. The first core was dedicated to microelectrode profiling and solid-phase geochemistry. The solid phase was characterized by total organic carbon and reactive iron, manganese and phosphorus, extracted by an ascorbate reagent (buffered at pH 8) over 24 h (Kostka and Luther III, 1995; Anschutz et al., 1998, 2005; Hyacinthe et al., 2001; Hyacinthe and Van Cappellen, 2004). For further details, see the Supplement (S1). Oxygen was analysed with Clark-type electrodes ($50 \mu\text{m}$ tip diameter, Unisense®, Denmark) within the first 5 mm at a $100 \mu\text{m}$ vertical resolution. In the second core, one-dimensional DET (diffusive equilibrium in thin film; adapted from Davison and Zhang, 1994; Krom et al., 1994) probes were incubated over one night to sample dissolved sodium, iron, manganese and phosphorus. Gel samples were eluted in 0.01 M HNO_3 and analysed by inductively coupled plasma atomic emission spectroscopy (ICP-AES). Salinity was estimated from sodium concentration. For further details, see Supplement S2.

2.3 2-D sampling and processing

For the two-dimensional sampling, we used a “jaw device”, composed of two main parts (jaws; Fig. 1). The first jaw is a DET gel probe which samples the dissolved chemical species from the pore water at high resolution, whereas the second jaw samples a 2 cm thick slice of the adjacent sediment, from which we subsampled 1 cm³ aliquots for foraminiferal analysis. The first jaw is a 250 mm × 200 mm × 2 mm polycarbonate plate with a central depression of 1 mm that holds a 2-D gel probe. The probe is made of two layers: (1) a 180 mm × 97 mm × 0.92 mm polyacrylamide thin film prepared and rinsed with Milli-Q water (Krom et al., 1994) which reaches equilibrium in a few hours once incubated (called “2-D DET gel”) and (2) a PVDF porous (0.2 μm) membrane to protect the gel and prevent it from falling out of the depression and control diffusion. The 2-D DET gel was prepared and mounted less than 1 week before sampling, conserved in a wet clean plastic bag, and then de-aerated by N₂ bubbling for about 6 h before deployment. The sampler was deployed into the sediment at low tide. On both lateral sides of the central depression (Fig. 1), plastic rails (2 cm high) were fixed in order to guide the second jaw to slide along the plate. The second jaw is a stainless steel plate (1.5 mm thick) bent on both sides. After equilibration (5 h) of the 2-D gel, the second jaw was inserted along the guides of the first jaw and the whole device was gently pulled out of the sediment. Once onshore, the 2-D gel was separated from the sediment, covered with a plastic-coated aluminium plate and stored in an icebox with dry ice pellets (Cesbron et al., 2014) until final storage in a freezer (−18 °C).

The sediment plate was manually cut (with stainless steel trowels) within 30 min in 1 cm³ cubes for a surface of 8 cm × 8 cm. The resulting sampling map is presented in Fig. 2 together with the 1-D sampling scheme of foraminifera. Next, these sediment cubes were labelled with CTG so that living foraminifera could be recognized (as for the core slices; see Sect. 2.2). Considering an error of 1 mm for each cut, the volume uncertainty was ~ 14 %, except for surface samples where the microtopography of the sediment surface considerably increases volume uncertainty.

The 2-D DET probe was analysed in order to obtain the concentrations of dissolved iron and dissolved reactive phosphate (DRP) (Cesbron et al., 2014). After thawing at ambient temperature, the sample gel was quickly recovered by a reactive gel equilibrated in specific colorimetric reagents. Twenty-five minutes after contact, a photograph (reflectance analysis) of superposed gels was taken with a hyperspectral camera (HySpex VNIR 1600) and analysed. The resolution (surface area of pixels) was 211 μm × 216 μm. The estimated incertitude is 10 % for iron and 11 % for DRP. For further details, see Supplement S3. To compare the geochemical species distribution (at submillimetre resolution) and foraminiferal density (at centimetre resolution), an R

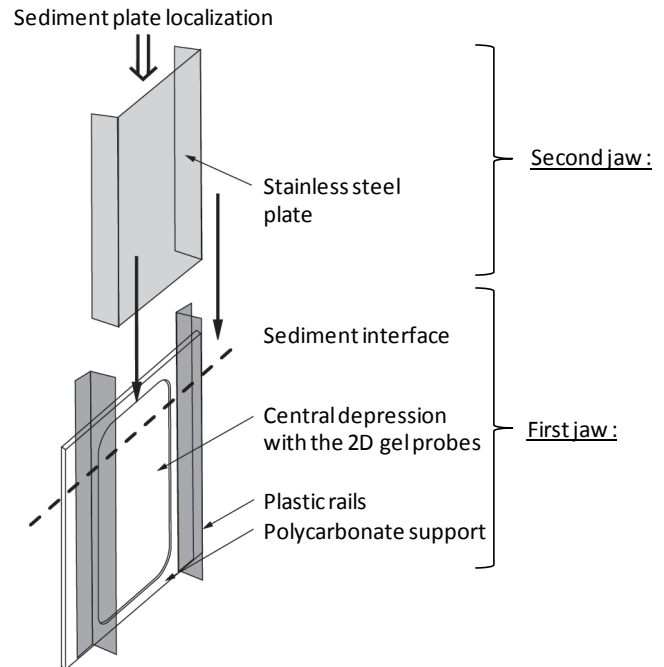


Figure 1. Schematic view of the “jaw device” for simultaneous sampling of sediment and porewater.

code was written that allowed for the downscaling of chemical resolution from 0.2 mm to 1 cm.

2.4 Statistical analyses

The patchiness effect or autocorrelation, interpreted as the fact that the density of one square depends on its neighbours, was explored using spatial correlograms built using Moran’s index (I), computed with R (package “spdep”, following Fortin and Dale, 2005; Bivand et al., 2008; Legendre and Fortin, 2010; Borcard et al., 2011; Eq. 1). This index was applied to benthic meiofauna by Blanchard (1990) and Eckman and Thistle (1988) and to foraminifera by Hohenegger et al. (1993). This index calculates the similarity of pair values for one neighbourhood – a neighbourhood being defined by a weight ($w_{i,j}$) function of the distance (d) between pairs.

$$I(d) = \frac{\sum_{i,j} w_{i,j}(d) (x_i - \bar{x})(x_j - \bar{x})}{\sqrt{\sum_i (x_i - \bar{x})^2}} \times \frac{n}{\sum_{i,j} w_{i,j}(d)} \quad (1)$$

Here, the $n = 40$ cubes used for Moran’s index have neighbourhoods defined as cubes in direct contact (four neighbours per sample with a weight of 1 and the others have 0, also known as “rook connectivity”; Fortin and Dale, 2005). With this configuration, Moran’s index is -1 for a contrasted organization (perfect negative correlation between neighbours) and $+1$ in the case of grouped organization (perfect posi-

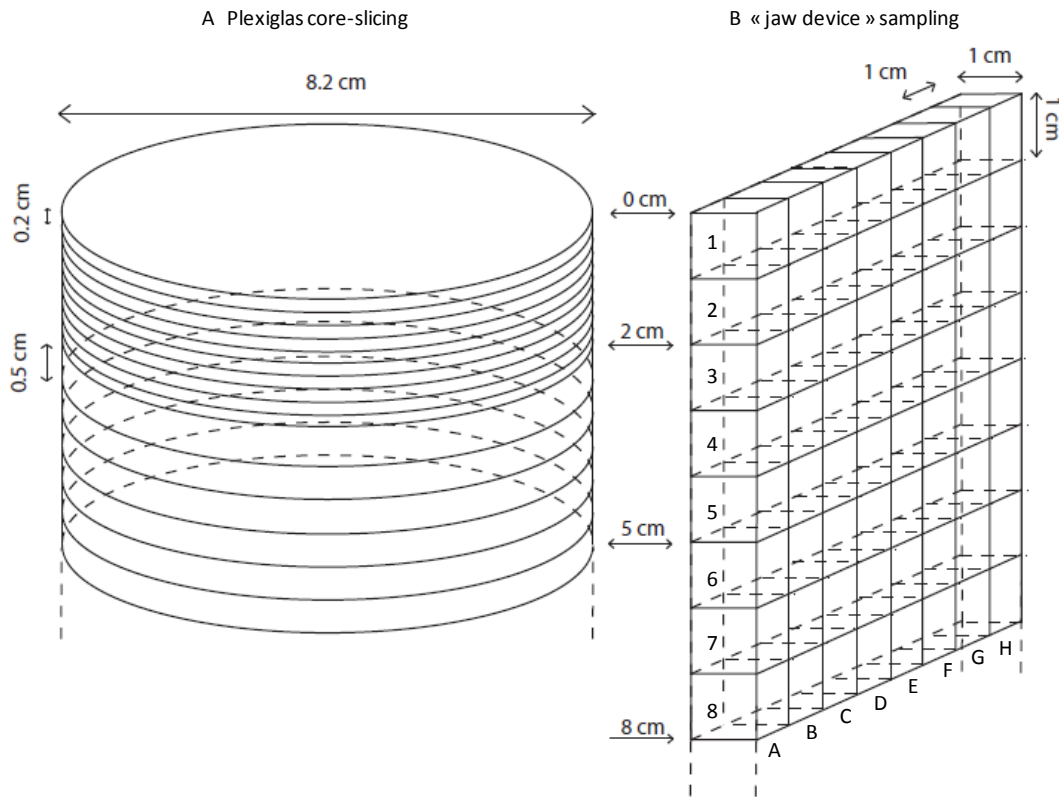


Figure 2. Sediment sampling methodology for living foraminiferal analyses. (a) Usual 1-D hand coring and layer slicing. (b) Sediment plate sampling with the second jaw of the “jaw device” (Fig. 1) and representation of the sediment cubic slicing.

tive correlation between neighbours). A value close to zero ($I_0 = (n - 1)^{-1}$) corresponds to no organization or random distribution. The correlogram plots Moran’s index versus the order of the neighbours (o.n.). A decrease in the Moran’s index from positive to negative values characterizes a patchy distribution. The characteristic length of the patchiness is defined as the order of neighbours when $I_{o.n.} = 0$ (Legendre and Fortin, 1989). Two-dimensional non-random organization was tested with the alternative hypothesis: $I_{o.n.} > I_0$. The second test examines if there is a preferential direction in the organization (isotropy). Again, the alternative hypothesis for Moran’s index, $I_{o.n.} > I_0$, is used, restricting the distance to the tested dimension (vertical or horizontal). Thus, in our case, each sample was compared only with its lateral or vertical neighbours (i.e. two neighbours per test).

3 Results

3.1 1-D geochemical features

Figure 3 shows both solid and dissolved chemical species obtained from the dedicated cores. Total organic carbon (C_{org} , black circles, Fig. 3a) decreased from 2700 to 1900 $\mu\text{mol g(dry sediment)}^{-1}$ in the first centimetre, then increased sharply until 1.5 cm depth, and finally decreased pro-

gressively from 2700 to 2400 $\mu\text{mol g(dry sediment)}^{-1}$ at 5 cm depth. Salinity (Fig. 3a) ranges from 7.5 to 1.7 with an offset of ~ 2 between replicates and a decrease of ~ 3 in the first 13 cm. Figure 3b shows the vertical distribution of dissolved oxygen. The 3 profiles shown (out of 18) are considered representative of the lateral variability in the sediment. Most of the oxygen concentration profiles show the exponential trend typical for undisturbed marine sediments (two profiles in Fig. 3b, with light-grey and white diamonds; Revsbech et al., 1980; Berg et al., 1998). However, one-third of the O_2 profiles diverged from the exponential model, showing an interruption of the decreasing trend, or even a local increase, at depth (e.g. the profile with dark-grey diamonds represented in Fig. 3b). The oxygen penetration depth (OPD) remained relatively constant around 2.0 mm (SD = 0.2 mm, $n = 18$) despite this heterogeneity.

Figure 3c, d and e show the distribution of manganese, iron and phosphorus, respectively, both in the dissolved phase (grey and open diamonds) and in the easily reducible solid phases (black circles, extracted by ascorbate leaching; Anschutz et al., 2005; Hyacinthe et al., 2006). Extracted manganese (mainly (hydr)oxide, black circles in Fig. 3c) showed a strong enrichment of the easily reducible solid phase (until 13 $\mu\text{mol g(dry sediment)}^{-1}$) in the first 2 mm, where an important upward diminution was visible in both replicates of

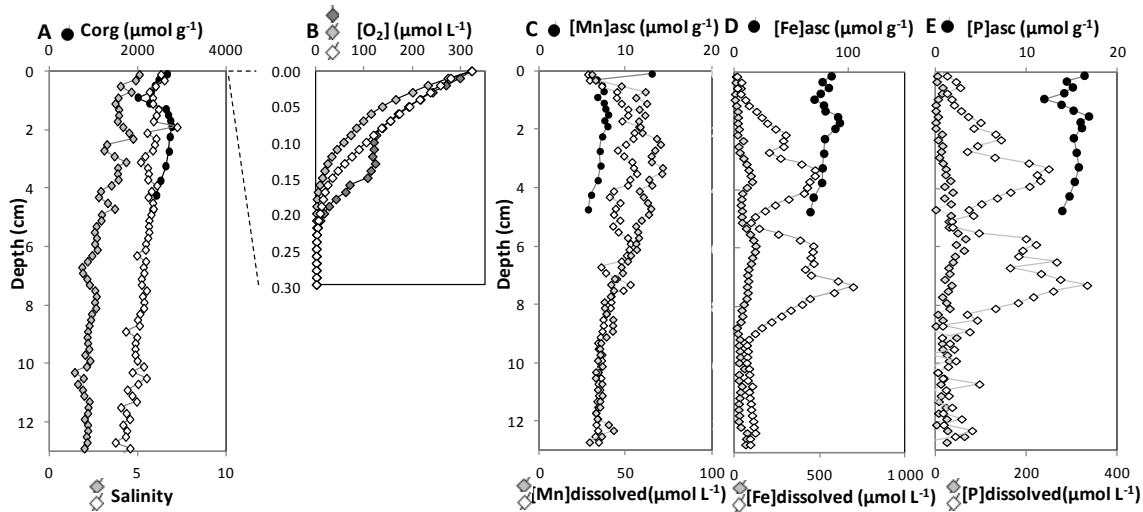


Figure 3. 1-D geochemical features. (a) Vertical profile of total solid organic carbon (filled circles, uncertainty smaller than symbol size) and profiles of salinity (white and grey diamonds). (b) Typical profiles of dissolved oxygen; the profile with dark-grey diamonds is considered bioturbated. (c, d, e) Vertical profiles of manganese (c), iron (d) and phosphorus (e) in dissolved (white and grey diamonds for DET replicates) and reactive solid phase (ascorbate-leached) from the core (black circles).

the dissolved phase (grey and open diamonds in Fig. 3c). Below, the solid phase showed a slightly decrease from 7.9 to 5.6 $\mu\text{mol g}(\text{dry sediment})^{-1}$ until 5 cm depth. The dissolved manganese concentration decreased between 4 and 9 cm depth in both replicates (from 70 to 30 $\mu\text{mol L}^{-1}$). In the solid phase, iron, phosphorus and manganese are strongly correlated when the surface sample is not considered ($r^2 = 0.70$ between iron and manganese and $r^2 = 0.55$ between iron and phosphorus). Profiles of dissolved iron and phosphorus are also strongly correlated ($r^2 = 0.90$, slope = 1.87 and $r^2 = 0.47$, slope = 1.31 for replicates A and B). Iron and phosphorus were remobilized, and therefore appeared in the dissolved phase, between 1 and 9 cm. Both replicates of dissolved iron showed the same four well-described maxima (at least six samples for each maximum) at 2.3, 3.3, 5.9 and 7.3 cm depth but with different concentrations. In replicate A (open diamonds) these maxima have 5 times higher iron concentrations (up to 700 $\mu\text{mol L}^{-1}$) than in replicate B.

3.2 Visual features on the sediment plate

Figure 4a shows the sediment slice obtained from the “jaw device” facing the 2-D DET gel. In order to facilitate the description, the figures were subdivided into centimetre squares labelled with letters for the horizontal position and numbers for the vertical position. The black rectangle corresponds to the 2-D DET gel position, the blue rectangle to the gel signal exploited and the red rectangle to the 2-D foraminiferal sampling. Burrows parallel to the cutting plan are visible over their entire length. When perpendicular to the cutting plan, they appear as a dark hole (B14 in Fig. 4a). Figure 4b summa-

rizes burrow distributions superimposed on a picture of the gel after equilibration with the colorimetric reagents (pink coloration corresponds to iron and blue to dissolved reactive phosphorus (DRP)). Five burrows were visibly connected to the sediment surface; their traces mostly extended vertically down to 10 cm depth, where their track is lost. Between 10 and 15 cm depth, visible burrow density decreased. Below 15 cm depth, burrows were rarely observed and the sediment was dark (Fig. 4a). During slicing of the sediment plate, living polychaetes (*Hediste diversicolor*) were observed in some burrows.

3.3 2-D DET gel

Figure 5 shows the two-dimensional data sets, with the distribution of dissolved phosphorus (Fig. 5a) and iron (Fig. 5b) obtained from the 2-D DET gel. For comparison, burrow distribution is shown in Fig. 5a. Dissolved iron and phosphorus both appeared a few millimetres below the sediment–water interface. They are positively correlated for the whole plate ($r^2 = 0.59$, slope = 2.7). Despite their patchy distribution, both species can be observed along the entire length of the gel probe (i.e. 17 cm depth). A main feature was the occurrence of two prominent vertical structures enriched in dissolved iron and phosphorus (A-B/6–9 and F-G/5–14; Fig. 5). The highest concentrations, of about 170 and 50 $\mu\text{mol L}^{-1}$ for iron and phosphorus, respectively, were found within the structure at the right (squares F/8–9). In the structure on the left (A/6–8), iron and phosphorus maxima were around 120 and 25 $\mu\text{mol L}^{-1}$, respectively.

Most burrows seem to impact the iron concentration. For example, burrows 1, 3 and 5 clearly correspond (in the

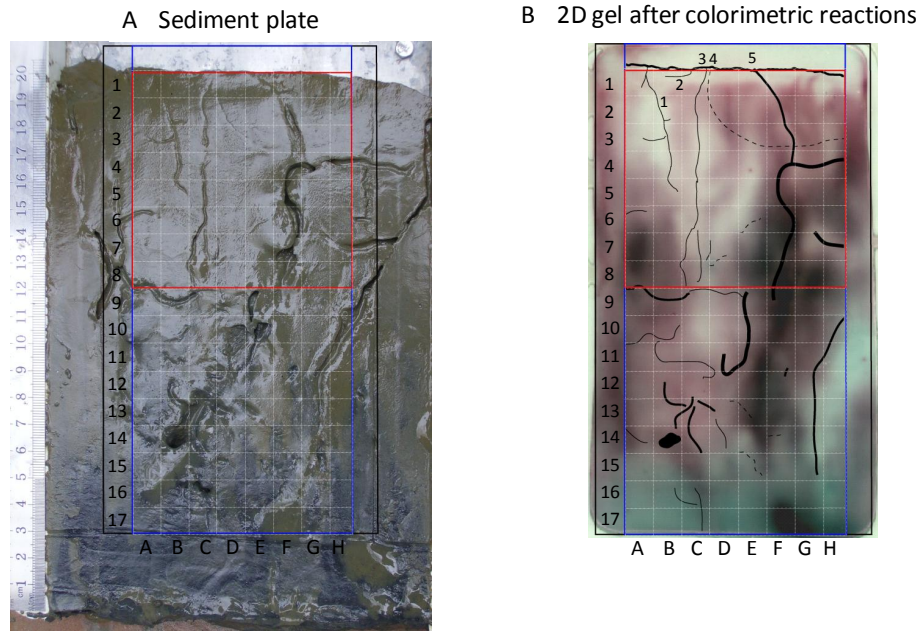


Figure 4. (a) Picture of the sediment plate before cube slicing for foraminiferal analysis (sediment–water interface at the top). (b) Picture of the analysed gel after colorimetric reactions: dissolved iron shown in dark pink and dissolved phosphorus in turquoise (burrows superimposed). The black rectangle corresponds to the gel limit, the blue rectangle to the limit of available data set of dissolved iron and phosphorus and the red rectangle to the limit of the available data set of foraminiferal distribution.

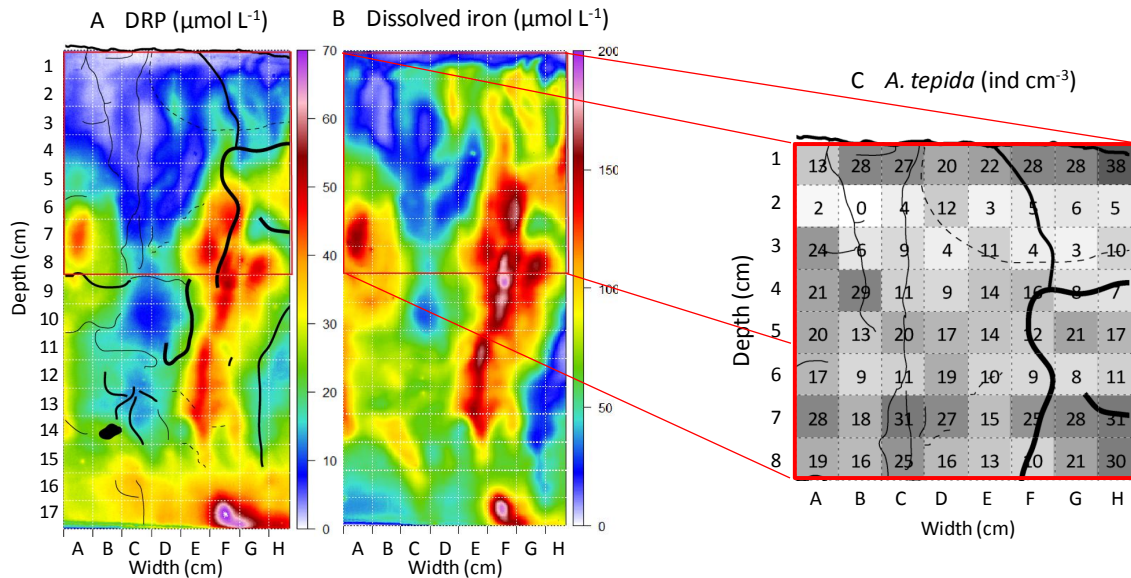


Figure 5. (a, b) Two-dimensional concentrations after numerical analysis of dissolved reactive phosphorus (DRP) and dissolved iron. The distribution of burrows is shown on the DRP plot. Red lines represent the boundary of foraminiferal analysis. (c) 2-D distribution of *A. tepida* densities from the sediment plate with burrow distribution.

first 4 cm) to a drastic decrease in or even disappearance of dissolved iron, whereas other burrows seem to correspond to a dissolved iron enrichment (F-G/5–9). However, some centimetre-sized patches (e.g. A-B/6–9, H-G/8–9 and F-G/17) seem to be unrelated to burrow structures. Below

15 cm depth, the sediment was dark and dissolved iron generally decreased, whereas DRP increased.

3.4 Living foraminiferal distribution

Figure 5c shows the distribution of CTG-labelled *Ammonia tepida* determined for 1 cm³ samples in the sediment facing the 2-D DET gel. The analysis of living foraminifera in the 64 cubes (8 cm width × 8 cm depth) takes roughly the same time as the analysis of one core of 8.2 cm diameter (until 5 cm depth). *Ammonia tepida* was by far the dominant species, accounting for 92 % of the total assemblage. The second most frequent species, *Haynesina germanica*, represented 5 %, but its low density (mostly 0, 1 or 2 individuals per cubic centimetre) was not sufficient to support a serious discussion. For this reason the data relative to this species are omitted from the present paper. *A. tepida* density ranged from 0 to 38 individuals cm⁻³ with important lateral and vertical variability. The relative standard deviation (RSD) calculated for each row is, on average, 45 %, whereas for each column the RSD is 60 %, suggesting a slightly more pronounced vertical organization. This is confirmed by the stratification of the richest samples (≥ 27 individuals cm⁻³), which were found in the topmost centimetre and below 6 cm depth, whereas the poorest samples (≤ 5 individuals cm⁻³) were found between 1 and 3 cm depth. Each row from the 2-D distribution can be represented by a box-and-whisker plot (Fig. 6). The results confirm a three-step pattern with high densities at the surface (13 to 38 individuals cm⁻³), lower density between 1 and 3 cm depth (0–12 individuals cm⁻³) and one outlier at 24 individuals cm⁻³ and increasing values below 3 cm (7 to 31 individuals cm⁻³).

This vertical pattern is also visible in the two studied sediment cores (Fig. 6): high densities of *A. tepida* (26 ± 0 individuals cm⁻³) are observed in the first 2 mm, with a rapid decrease to minimal densities in the 1.0–1.2 cm layer (3 ± 0 individuals cm⁻³), followed by a progressive, somewhat irregular increase until 9 ± 0 individuals cm⁻³ below 2 cm depth to 8 cm depth. Despite the different vertical sampling resolution, the densities observed in the cores are in agreement with the average densities observed in the sediment slice cubic samples.

4 Discussion

4.1 A methodological improvement to characterize heterogeneity

Here, we present for the first time a methodology allowing the simultaneous study of the vertical and horizontal heterogeneity of dissolved chemical species and living foraminifera (determined by CTG labelling) in the first 8 cm of the sediment. Figure 6 compares the vertical density distribution of *A. tepida* between the cores (triangles) and the jaw device (box-and-whisker plots), sampled a few decimetres apart. Despite the different vertical sampling resolution, the densities observed in the cores (sampling surface of 53 cm²) are

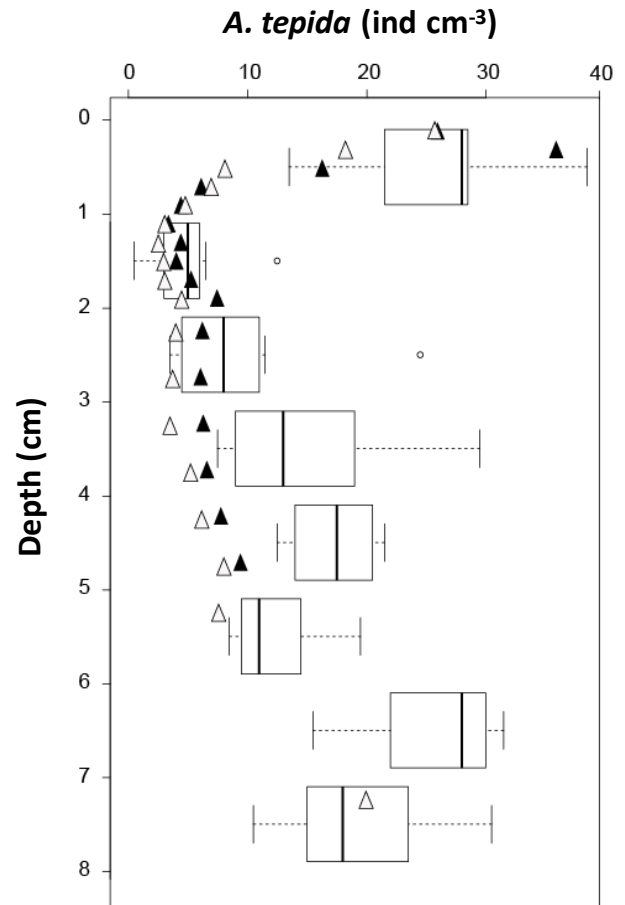


Figure 6. Vertical comparison of *A. tepida* densities from the two cores (filled and open triangles) and the “jaw device” sampling (each box plot represents the distribution of one layer; bars are first and third quartiles for the boxes length and whiskers are below 1.5 interquartiles; open circles are outliers).

in agreement with the average densities observed in the sediment slice samples (sampled with the “jaw device”, sampling surface of 8 cm²). This similarity suggests a limited horizontal heterogeneity of *A. tepida* at the decimetre scale, although it is impossible to draw firm conclusions on the basis of only three samples (the two cores and the jaw device).

The jaw device (box plot whiskers, Fig. 6) reveals a heterogeneous horizontal distribution at the centimetre scale. The centimetre-scale heterogeneity is quantified by calculating the Moran’s index that estimates the characteristic length of foraminiferal niches. Figure 7 shows Moran’s index correlograms applied between 3 and 8 cm depth (suboxic sediment), where high densities of living foraminifera were observed. Figure 7a shows that the spatial organization of *A. tepida* is patchy at the centimetre scale ($I_1 = 0.24$, p value = 0.013). For farther neighbours the Moran’s index values drop to zero, meaning random organization. Concerning vertical and horizontal heterogeneities, Moran’s index values for direct neigh-

bours are 0.02 and 0.47, with p values of 0.38 and 0.001, respectively. For second-order neighbours, values do not significantly differ from 0 in either direction (data not shown). This means that *A. tepida* specimens tend to be grouped in horizontal spots with a characteristic length of 1 to 2 cm.

Figure 7b shows the Moran's index correlogram for iron at 1 cm scale resolution (phosphorus is similar and not shown). It shows strong patchiness ($I_1 = 0.7$) for direct neighbours in either directions, with a characteristic length of 3–4 cm. The fact that the characteristic lengths of *A. tepida* (Fig. 7a) and dissolved iron (Fig. 7b) patches are longer than 1 cm suggests that the impact of different sampling thicknesses (roughly zero for dissolved iron compared to 1 cm for foraminifera) would not result in major bias. Moreover, this characteristic length is important as it likely corresponds to the characteristic length of the controlling mechanisms (Clark, 1985; Wu and Li, 2006). In fact, the difference in Moran's index between chemical species and the *A. tepida* density distribution suggests that not exactly the same mechanisms control these parameters. This is an unexpected result, since most conceptual models explain benthic foraminiferal distribution in the sediment as a direct response to geochemical gradients, especially oxygen and sulfide (Jorissen et al., 1998; Van der Zwaan et al., 1999; Fontanier et al., 2002; Langezaal et al., 2006; Langlet et al., 2013), which intimately control iron remobilization.

4.2 Factors generating chemical heterogeneity

The heterogeneity of geochemical patterns is mainly explained by the availability of oxidants mineralizing organic carbon. In the generally applied conceptual model of Froelich et al. (1979), organic matter remineralization is characterized by a succession of horizontal layers where specific oxidants are used. Figure 3 confirms this theoretical vertical stratification: oxygen is rapidly consumed by respiration (about 2 mm depth, Fig. 3b), and thereafter reduced dissolved manganese appears (Fig. 3c). Dissolved iron appears still deeper, with a first maximum at 2 cm depth. The slopes of the concentration profiles are steeper and the reactive solid phase (Fig. 3d and c) is more concentrated for iron than for manganese, suggesting a higher reactivity. However, the strictly vertical succession of redox layers is no longer respected in the deeper suboxic layers, as suggested by the presence of multiple maxima of iron (Fig. 3d) and by the high lateral heterogeneity observed in Fig. 5a and c. This high lateral heterogeneity cannot be explained by vertical diffusion of oxygen. It appears therefore that a strictly vertical stratification of redox zones, defining a similar foraminiferal microhabitat succession, is not a reasonable assumption for our study area.

4.2.1 Macrofaunal impact on heterogeneity

Macrofauna is assumed to be the most important cause of chemical heterogeneity at a scale of 0.01 cm (roughly the foraminiferal scale) to 100 cm (station scale), because of its ability to reorganize the sediment. In this way, macrofauna determines whether other factors can impact the heterogeneity of dissolved iron and/or *A. tepida*. Macrofauna modifies (i) the sediment texture/composition (burrow walls or faecal pellets); (ii) the redox conditions, by ventilation of their burrows with oxygenated water (bioirrigation); and (iii) particle arrangement, by crawling or burrowing (biomixing) (Meysman et al., 2006). The efficiency of biomixing to homogenize the sediment mainly depends on two aspects (see Wheatcroft et al., 1990, or Meysman et al., 2010a, for a more detailed discussion):

1. **TSI** The biomixing species assemblage. At the Les Brillantes mudflat, the main macrofaunal species are *Hediste diversicolor* (630 individuals m^{-2}) and *Scrobicularia plana* (70 individuals m^{-2} ; I. Métais, personal communication, 2015). *H. diversicolor* is a gallery diffusor (particle mixing due to burrowing activity), whereas *S. plana* is an epifaunal biodiffusor (particles are mixed in a random way over short distances along the surface; e.g. François et al., 2002; Kristensen et al., 2012). These two species generate homogeneity or heterogeneity according to the second criterion. See below.
2. The relation between the average time of existence of the studied objects (here foraminifera and dissolved iron) in the bioturbated area and the average time between two bioturbation events. Frequent bioturbation events generate efficient mixing (homogeneity), whereas rare bioturbation events generate heterogeneity. The average time between two bioturbation events is estimated to be days to months by tracer modelling (Wheatcroft et al., 1990; Meysman et al., 2003, 2008), while the longevity of foraminifera in suboxic environments is estimated to be roughly 1 year (Langlet et al., 2013; Nardelli et al., 2014). The mean residence time of iron in the dissolved phase is estimated between 2 and 3 days (Thibault de Chanvalon et al., in preparation). Therefore, biomixing should generate a homogeneous distribution of foraminiferal density distribution, contrasting with a heterogeneous distribution of dissolved iron (and DRP). The different time spans also suggest that most of the living foraminifera were already present in the suboxic sediment before the visible (most recent) burrows were created. Conversely, the heterogeneity of the dissolved chemical species should be directly related to biomixing and to others factors that have not been homogenized by biomixing, i.e. with a short time of existence in suboxic environments.

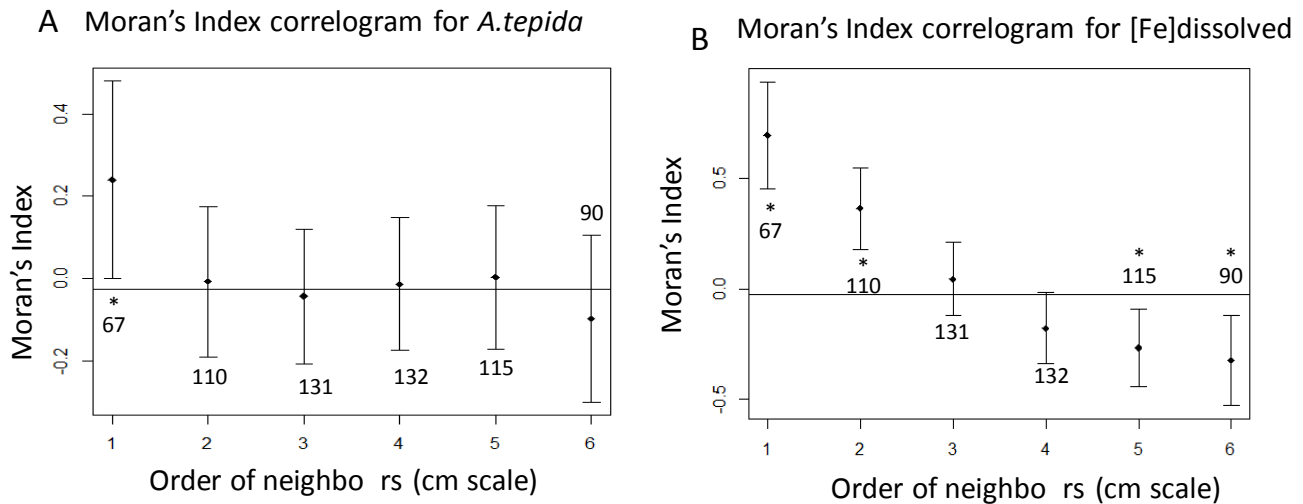


Figure 7. Moran's index correlograms for 3 to 8 cm depth. **(a)** Moran's index correlogram for *A. tepida* with a 1 cm resolution. **(b)** Moran's index correlogram for [Fe]dissolved with a 1 cm resolution. An asterisk indicates significant differences from zero; error bars are twice the standard deviation. The numbers are the number of pairs for each order of neighbours.

4.2.2 Geochemical impact of biogenic factors

The factors likely to generate chemical heterogeneity are (1) bioirrigation, which mainly causes an increase in oxidant availability (Aller and Aller, 1986; Aller, 2004; Arndt et al., 2013), and (2) biogenic particles (e.g. decaying macrofauna, faecal pellets), which cause an increase in labile carbon availability. Dissolved iron shows two opposite types of behaviour (Aller, 1982). (1) Iron precipitates as a hydroxide when the oxidative state of the pore water surrounding active burrows increases (Meyers et al., 1987; Zorn et al., 2006; Meysman et al., 2010b). This is confirmed by visible burrows in Fig. 5 in which both dissolved iron and DRP are depleted (Fig. 4, numbers 1, 3, 5 (above 6 cm depth) and burrows in B-D/13, E/9–11, G-H/10–15 and A-B/9). These structures are mainly vertical and have a length often exceeding 3 cm, in agreement with the Moran's index correlogram. Conversely, within the long burrow F-G/5–9, dissolved iron is enriched, indicating that this burrow is abandoned and no oxygen renewal occurs. This feature was also observed for some burrows by Zhu and Aller (2012) and Cesbron et al. (2014). (2) Dissolved iron is produced by anaerobic respiration where biogenic particles increase labile carbon availability, and thereby decrease the oxidative state of surrounding pore waters (Robertson et al., 2009; Stockdale et al., 2010). The geometry and isolation from visible burrows of patches A/7–8, G-H/8–9 and F-G/17 in Fig. 5a and b suggest that they could represent centimetre-wide labile organic matter patches. We hypothesize that these patches correspond to intense remineralization of biogenic particles that dissolves iron oxides.

4.3 Mechanisms controlling the *A. tepida* distribution

Figures. 5c and 6 clearly describe a three-step pattern in the distribution of *A. tepida*, with high densities at the surface, low densities between 1 and 3 cm depth, and a somewhat surprising increase below (in suboxic sediments). A similar pattern has been reported, but not discussed, for other intertidal environments (Alve and Murray, 2001; Bouchet et al., 2009). In our study, the consistency of the eight vertical columns from the plate sampling confirms the robustness of this pattern, and the two-dimensional approach reveals an organization of *A. tepida* in centimetre-wide patches in the suboxic sediment. The next subsections discuss possible mechanisms that could explain these features, especially in the suboxic environment, where active burrows (supporting biomixing and bioirrigation) and biogenic particles have been identified as factors likely to generate such heterogeneity.

4.3.1 Foraminiferal metabolism

Generally, aerobic metabolism is considered the dominant mechanism in oxic conditions since it is energetically most efficient. In fact, Figs. 5c and 6 clearly describe maximal densities of *A. tepida* at the sediment surface (0–2 mm depth) and low densities below (6–18 mm depth). This strong gradient of *A. tepida* density highlights the presence of a continuously oxygenated microhabitat enriched in organic matter (see TOC and O₂ profiles, Fig. 3a–b) close to the sediment–water interface, favourable for *A. tepida*. Energetic considerations and some observations that report a strong seasonal variability in the oxic zone (Moodley, 1990; Barmawidjaja et al., 1992) led to the assumption that foraminifera reproduce preferentially in the oxic layer (de Stigter et al., 1999; Berke-

ley et al., 2007). Together, these factors explain the maximum density in the surface layer.

Since the work of Richter (1961), numerous publications have reported living benthic foraminifera in suboxic sediment layers (Jorissen et al., 1992; Moodley and Hess, 1992; Bernhard and Sen Gupta, 2003). For intertidal environments, studies have reported living (rose bengal stain) foraminifera in subsurface environments since the 1960s (e.g. Buzas, 1965; Steineck and Bergstein, 1979). Several in situ (Goldstein et al., 1995; Bouchet et al., 2009) and laboratory (Moodley and Hess, 1992; Moodley et al., 1998; Pucci et al., 2009; Nardelli et al., 2014; Nomaki et al., 2014) studies with *A. tepida* have also reported survival, activity and even calcification in suboxic conditions. Anaerobic metabolism would be a logical mechanism to explain the presence of large amounts of living foraminifera in suboxic layers. Complete or partial (with endo- and/or ectobionts; Bernhard and Alve, 1996) denitrification co-occurring with nitrate storage has been demonstrated for some foraminiferal taxa (Risgaard-Petersen et al., 2006). Nomaki et al. (2014) suggested denitrification by endobionts for *A. tepida*. However, denitrification has not been measured in *A. tepida*, and only very low intracellular nitrate concentrations were found (Pina-Ochoa et al., 2010; Geslin et al., 2014). It appears therefore unlikely that the abundance of living *A. tepida* in deeper suboxic layers can be explained by active colonization.

4.3.2 Burying and burrow microenvironment

It is clear that biomixing is a likely mechanism to explain the introduction of foraminifera in deeper sediment layers by passive transport (Alve and Bernhard, 1995; Goldstein et al., 1995; Moodley et al., 1998; Saffert and Thomas, 1998; Alve and Murray, 2001; Jorissen, 2003). However, the spatial distribution resulting from this passive transport has never been well described, or modelled. According to the theory of biomixing, we suggest that the vertical distribution of *A. tepida* can be approached with a diffusion model, which should lead to an exponential downward decrease, with the slope as a function of the mortality rate. *A. tepida* is possibly able to survive in suboxic environments using an intermittent aerobic metabolism, using the oxygen that can be occasionally available due to bioirrigation (Fenchel, 1996; Wang et al., 2001; Wenzhofer and Glud, 2004; Pischedda et al., 2012). Their activity should progressively decrease once oxygen is depleted; Phipps (2012) suggested that they could finally be immobilized before dying as a result of a prolonged absence of oxygen supply. We think that repeated introduction by macrofaunal bioturbation, followed by reduced metabolic activity, leading to immobilization, is the most likely mechanism to explain the high abundances of living foraminifera in suboxic sediments.

Figures 4a and 5b show no relation between visible burrows and living *A. tepida*. This result is in agreement with the different timescales of the foraminiferal lifespan and the

burrows, and with the idea that biomixing homogenizes the *A. tepida* density. It also suggests that the oxygen obviously brought by formation of new burrows is consumed too fast to allow all infaunal *A. tepida* to migrate to these active burrows. Thus, recent burrow walls are apparently not colonized by specimens of *A. tepida* already present in the suboxic sediment. Our observations contrast with earlier studies, showing increased foraminiferal densities (up to 300 times higher than in the surrounding sediment, rose bengal staining) in burrow walls. For example, data from burrows of *Amphicteis* sp. at 4800 m depth (Aller and Aller, 1986), of *Echiurus echiurus* at 42 m depth (Thomsen and Altenbach, 1993), and of *Pestarella tyrrhena* in intertidal sand flats (Koller et al., 2006) all presented high foraminiferal densities. The observed differences could be due to the fact that burrows of various macrofaunal taxa may represent very different environmental conditions and possibly due to a difference in sampling scale, since Thomsen and Altenbach (1993) and Koller et al. (2006) applied an irregular millimetre sampling around burrows. To summarize, macrofaunal activity would explain transport to and survival in suboxic layers. However, it does not explain the density minimum at 1–3 cm depth.

4.3.3 Sensitivity to geochemical gradients

We think that the most probable explanation for the 1–3 cm density minimum of *A. tepida* is an active upward migration of the specimens, back to the sediment surface, before they are completely immobilized by a lack of oxygen and a strongly lowered metabolism. Numerous studies have already reported that vertical migration of foraminifera allows them to move to more hospitable environments (Jorissen, 1988; Van der Zwaan and Jorissen, 1991; Alve and Bernhard, 1995; Moodley et al., 1998; Gross, 2000; Langezaal et al., 2003; Geslin et al., 2004; Ernst et al., 2005). In an experiment in which populations of *Haynesina germanica* were uniformly mixed in a 6 cm sediment column, Ernst et al. (2006) saw a clear migration back to the surface for the foraminifera living between 1 and 3 cm depth, and suggested that foraminifera living at greater depth were unable to do so. Similarly, Hess et al. (2013) showed that benthic foraminifera are able to migrate through suboxic sediment to reach oxic sediments over a maximal distance of a few centimetres. Active migration towards directly detected oxygen or organic matter over distances beyond 1 cm seems improbable, since this distance is much higher than the typical pseudopodial length (about 1 cm; see Travis and Rabalais, 1991). However, as described above, the presence of oxygen could be indirectly detected by other geochemical gradient (e.g. NO_3^- , Mn^{2+} or Fe^{2+} , dissolved organic carbon, $p\text{CO}_2$). However, when gradients generated by the oxygen front are imperceptible for *A. tepida*, because they are living too deep in the sediment, or when such gradients are hidden by other sources of geochemical gradients (as organic-rich patches), this upward migration could no longer occur. This could ex-

plain why, below 3 cm depth, *A. tepida* remains in the deeper sediment layer after being transported there accidentally.

However, the organization of the foraminiferal in 1–2 cm wide horizontal patches identified by Moran's index suggests that *A. tepida* detects not only vertical geochemical gradients but probably also lateral gradients around degrading biogenic particles. The characteristic length of patches corresponding to biogenic particles identified by dissolved iron maxima (A/7–8, G-H/8–9 and F-G/17 in Fig. 7c and d; see Sect. 4.2.2) is in agreement with the characteristic length of foraminiferal density maxima. For instance, in the first 8 cm, the two identified biogenic particles patches (A/7–8, G-H/8–9 in Fig. 5b) both correspond to a higher density of *A. tepida* (28/19 and 21/30 individuals cm^{-3} on average for A/7–8 and G-H/8, respectively, Fig. 5c). In agreement with these results and despite a lowered metabolism, we hypothesize that foraminifera could move towards patches of labile organic matter even in deeper suboxic layers. Nevertheless, a better identification of labile carbon patches, replicate sampling with the here-developed strategy, and experimental studies with artificial geochemical gradients are necessary to confirm our hypotheses about the behaviour of *A. tepida* in suboxic environments.

To summarize, we suggest that the distribution of *A. tepida* can be interpreted as the result of not less than five interacting mechanisms (Fig. 8). (1) High foraminiferal densities at the surface are the result of the presence of abundant labile organic matter and reproduction in the oxygenated layer (Sect. 4.3.1); (2) downward transport by macrofaunal biomixing introduces living foraminifera into deeper sediment layers (Sect. 4.3.2); (3) in the first 3 cm foraminifera are capable to migrate back to the oxygenated, organic-rich surface layers once they detect redox gradients, whereas in deeper sediment layers, they are no longer capable to find their way back to the superficial oxygenated layer (Sect. 4.3.3); (4) after a prolonged presence in suboxic conditions, foraminifera lower their metabolism and become inactive; and (5) foraminifera can be temporarily remobilized during intermittent bioirrigation events, and can eventually migrate towards organic-rich microenvironments in their vicinity (Sect. 4.3.3). A better identification of labile carbon patches – for example based on alkalinity (Bennett et al., 2015), $p\text{CO}_2$ (Zhu et al., 2006; Zhu and Aller, 2010) or dissolved organic carbon – should allow the interpretation to be taken further.

5 Conclusions

We present a new, simple and robust sampling protocol for obtaining the 2-D distribution of benthic foraminifera combined with the 2-D distribution of geochemical species, in this case dissolved iron and phosphorus. This technique allows visual observation of burrow features. Geochemical features allowed us to recognize active burrows (with minimal

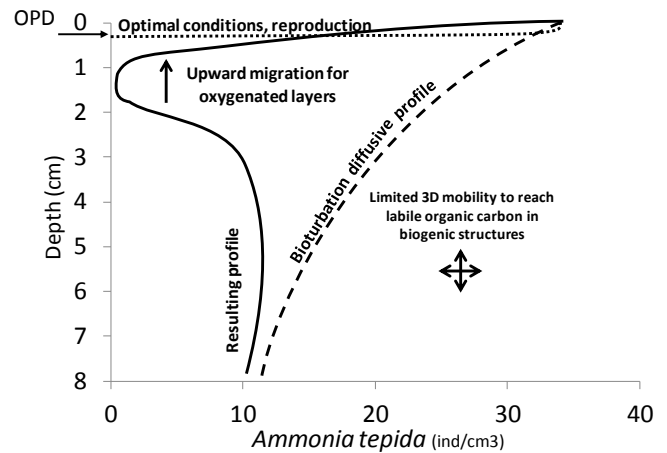


Figure 8. Putative mechanisms explaining the *A. tepida* density profile (OPD: oxygen penetration depth).

dissolved concentrations) and to determine that areas of dissolved iron and phosphorus enrichment do not always represent abandoned burrows. Our observations on an estuarine mudflat showed an important density of *A. tepida* in suboxic environments with a characteristic length of patches of 1 to 2 cm. Surprisingly, no direct relation was found between active burrows and the *A. tepida* distribution. However, an enrichment of *A. tepida* was observed in some areas where dissimilatory iron reduction was intense, suggesting that, even in suboxic environments, there is a relation between the spatial distribution of *A. tepida* and labile organic matter remineralization. Our results show that the new sampling strategy proposed here can yield important new insights into the functioning of suboxic environments in estuarine mudflats.

The Supplement related to this article is available online at doi:10.5194/bg-12-1-2015-supplement.

Acknowledgements. This study is part of the RS2E – OSUNA project funded by the Région Pays de la Loire. Special thanks are due to Didier Jézéquel from IGP who designed the “jaw device”. Thanks to Clement Chauvin, Cyrille Guindir, H el ene Koroshidi and Eve Chauveau for their support in the field and laboratory. We thank the three editorial reviewers, whose comments helped us in improving our manuscript.

Edited by: L. Levin

References

- Aller, J. Y. and Aller, R. C.: Evidence for localized enhancement of biological associated with tube and burrow structures in deep-sea sediments at the HEEBLE site, western North Atlantic, *Deep-Sea Res. Pt. A*, 33, 755–790, 1986.
- Aller, R. C.: The Effects of Macrobenthos on Chemical Properties of Marine Sediment and Overlying Water, in: *Animal-Sediment Relations*, edited by: McCall, P. L. and Tevesz, M. J. S., Springer US, 53–102, 1982.
- Aller, R. C.: Conceptual models of early diagenetic processes: The muddy seafloor as an unsteady, batch reactor, *J. Mar. Res.*, 62, 815–835, 2004.
- Alve, E. and Bernhard, J. M.: Vertical migratory response of benthic foraminifera to controlled oxygen concentrations in an experimental mesocosm, *Oceanogr. Lit. Rev.*, 42, 137–151, 1995.
- Alve, E. and Murray, J. W.: Temporal Variability in Vertical Distributions of Live (stained) Intertidal Foraminifera, Southern England, *J. Foraminifer. Res.*, 31, 12–24, 2001.
- Anschutz, P., Zhong, S., Sundby, B., Mucci, A., and Gobeil, C.: Burial efficiency of phosphorus and the geochemistry of iron in continental margin sediments, *Limnol. Oceanogr.*, 43, 53–64, 1998.
- Anschutz, P., Dedieu, K., Desmazes, F., and Chaillou, G.: Speciation, oxidation state, and reactivity of particulate manganese in marine sediments, *Chem. Geol.*, 218, 265–279, 2005.
- Arndt, S., Jørgensen, B. B., LaRowe, D. E., Middelburg, J. J., Pancost, R. D., and Regnier, P.: Quantifying the degradation of organic matter in marine sediments: A review and synthesis, *Earth-Sci. Rev.*, 123, 53–86, 2013.
- Barmawidjaja, D. M., Jorissen, F. J., Puskaric, S., and van der Zwaan, G. J.: Microhabitat selection by benthic Foraminifera in the northern Adriatic Sea, *J. Foraminifer. Res.*, 22, 297–317, 1992.
- Bennett, W. W., Welsh, D. T., Serriere, A., Panther, J. G., and Teasdale, P. R.: A colorimetric DET technique for the high-resolution measurement of two-dimensional alkalinity distributions in sediment porewaters, *Chemosphere*, 119, 547–552, 2015.
- Benyoucef, I.: Télédétection visible proche-infrarouge de la distribution spatio-temporelle du microphytobenthos estuarien, Ph.D. thesis, Université de Nantes, 4 August, 2014.
- Benyoucef, I., Blandin, E., Lerouxel, A., Jesus, B., Rosa, P., Méléder, V., Launeau, P., and Barillé, L.: Microphytobenthos interannual variations in a north-European estuary (Loire estuary, France) detected by visible-infrared multispectral remote sensing, *Estuar. Coast. Shelf Sci.*, 136, 43–52, 2014.
- Berg, P., Risgaard-Petersen, N., and Rysgaard, S.: Interpretation of measured concentration profiles in sediment pore water, *Limnol. Oceanogr.*, 43, 1500–1510, 1998.
- Berkeley, A., Perry, C. T., Smithers, S. G., Horton, B. P., and Taylor, K. G.: A review of the ecological and taphonomic controls on foraminiferal assemblage development in intertidal environments, *Earth-Sci. Rev.*, 83, 205–230, 2007.
- Berner, R. A.: Sedimentary pyrite formation, *Am. J. Sci.*, 268, 1–23, 1970.
- Bernhard, J. M. and Alve, E.: Survival, ATP pool, and ultrastructural characterization of benthic foraminifera from Drammensfjord (Norway): response to anoxia, *Mar. Micropaleontol.*, 28, 5–17, 1996.
- Bernhard, J. M. and Sen Gupta, B. K. S.: Foraminifera of oxygen-depleted environments, in *Modern Foraminifera*, Springer Netherlands, 201–216, 2003.
- Bernhard, J. M., Ostermann, D. R., Williams, D. S., and Blanks, J. K.: Comparison of two methods to identify live benthic foraminifera: A test between Rose Bengal and CellTracker Green with implications for stable isotope paleoreconstructions, *Paleoceanography*, 21, PA4210, doi:10.1029/2006PA001290, 2006.
- Bivand, R., Pebesma, E., and Gomez-Rubio, V.: *Applied Spatial Data Analysis with R*, Springer New York, New York, NY, 2008.
- Blanchard, G.: Overlapping microscale dispersion patterns of meiofauna and microphytobenthos, *Mar. Ecol. Prog. Ser.*, 68, 101–111, 1990.
- Borcard, D., Gillet, F., and Legendre, P.: *Numerical Ecology with R*, Springer New York, New York, NY, 2011.
- Bouchet, V. M. P., Sauriau, P.-G., Debenay, J.-P., Mermillod-Blondin, F., Schmidt, S., Amiard, J.-C., and Dupas, B.: Influence of the mode of macrofauna-mediated bioturbation on the vertical distribution of living benthic foraminifera: First insight from axial tomodensitometry, *J. Exp. Mar. Biol. Ecol.*, 371, 20–33, 2009.
- Boudreau, B. P.: A method-of-lines code for carbon and nutrient diagenesis in aquatic sediments, *Comput. Geosci.*, 22, 479–496, 1996.
- Burdige, D. J.: 5.09 – Estuarine and Coastal Sediments – Coupled Biogeochemical Cycling, in: *Treatise on Estuarine and Coastal Science*, edited by: Wolanski, E. and McLusky, D., Academic Press, Waltham, 279–316, 2011.
- Buzas, M. A.: On the spatial distribution of foraminifera:, *Contrib. Cushman Found. Foraminifer. Res.*, 19, 1–11, 1968.
- Buzas, M. A.: Spatial Homogeneity: Statistical Analyses of Unispecies and Multispecies Populations of Foraminifera, *Ecology*, 51, 874–879, doi:10.2307/1933980, 1970.
- Buzas, M. A., Hayek, L.-A. C., Reed, S. A., and Jett, J. A.: Foraminiferal Densities Over Five Years in the Indian River Lagoon, Florida: A Model of Pulsating Patches, *J. Foraminifer. Res.*, 32, 68–92, 2002.
- Buzas, M. A., Hayek, L.-A. C., Jett, J. A., and Reed, S. A.: Pulsating Patches: History and Analyses of Spatial, Seasonal, and Yearly Distribution of Living Benthic Foraminifera, *Smithson. Contrib. Paleobiology*, 97, 1–91, 2015.
- Cesbron, F., Metzger, E., Launeau, P., Deflandre, B., Delgard, M.-L., Thibault de Chanvalon, A., Geslin, E., Anschutz, P., and Jézéquel, D.: Simultaneous 2-D Imaging of Dissolved Iron and Reactive Phosphorus in Sediment Porewaters by Thin-Film and Hyperspectral Methods, *Environ. Sci. Technol.*, 48, 2816–2826, 2014.
- Clark, W. C.: Scales of climate impacts, *Clim. Change*, 7, 5–27, 1985.
- Davison, W. and Zhang, H.: In situspeciation measurements of trace components in natural waters using thin-film gels, *Nature*, 367, 546–548, 1994.
- Debenay, J.-P. and Guillou, J.-J.: Ecological transitions indicated by foraminiferal assemblages in paralic environments, *Estuaries*, 25, 1107–1120, 2002.
- Debenay, J.-P., Bicchi, E., Goubert, E., and Armynot du Châtelet, E.: Spatio-temporal distribution of benthic foraminifera in relation to estuarine dynamics (Vie estuary, Vendée, W France), *Estuar. Coast. Shelf Sci.*, 67, 181–197, 2006.

- de Stigter, H. C., van der Zwaan, G. J., and Langone, L.: Differential rates of benthic foraminiferal test production in surface and subsurface sediment habitats in the southern Adriatic Sea, *Palaeogeogr. Palaeoclimatol. Palaeoecol.*, 149, 67–88, 1999.
- Douglas, R. G.: Paleocology of continental margin basins: a modern case history from the borderland of southern California, 1981.
- Eckman, J. E. and Thistle, D.: Small-scale spatial pattern in meiobenthos in the San Diego Trough, *Deep Sea Res. Part Oceanogr. Res. Pap.*, 35, 1565–1578, 1988.
- Ernst, S., Bours, R., Duijnste, I., and van der Zwaan, B.: Experimental effects of an organic matter pulse and oxygen depletion on a benthic foraminiferal shelf community, *J. Foraminifer. Res.*, 35, 177–197, 2005.
- Ernst, S. R., Morvan, J., Geslin, E., Le Bihan, A., and Jorissen, F. J.: Benthic foraminiferal response to experimentally induced Erika oil pollution, *Mar. Micropaleontol.*, 61, 76–93, 2006.
- Fenchel, T.: Worm burrows and oxic microniches in marine sediments. 1. Spatial and temporal scales, *Mar. Biol.*, 127, 289–295, 1996.
- Fontanier, C., Jorissen, F. J., Licari, L., Alexandre, A., Anschutz, P., and Carbonel, P.: Live benthic foraminiferal faunas from the Bay of Biscay: faunal density, composition, and microhabitats, *Deep-Sea Res. Pt. A*, 49, 751–785, 2002.
- Fortin, M.-J. and Dale, M. R. T.: *Spatial analysis a guide for ecologists*, Cambridge University Press, Cambridge, NY, 2005.
- François, F., Gerino, M., Stora, G., Durbec, J., and Poggiale, J.: Functional approach to sediment reworking by gallery-forming macrobenthic organisms: modeling and application with the polychaete *Nereis diversicolor*, *Mar. Ecol. Prog. Ser.*, 229, 127–136, 2002.
- Froelich, P. N., Klinkhammer, G. P., Bender, M. L., Luedtke, N. A., Heath, G. R., Cullen, D., Dauphin, P., Hammond, D., Hartman, B., and Maynard, V.: Early oxidation of organic matter in pelagic sediments of the eastern equatorial Atlantic: suboxic diagenesis, *Geochim. Cosmochim. Acta*, 43, 1075–1090, 1979.
- Geslin, E., Heinz, P., Jorissen, F., and Hemleben, C.: Migratory responses of deep-sea benthic foraminifera to variable oxygen conditions: laboratory investigations, *Mar. Micropaleontol.*, 53, 227–243, 2004.
- Geslin, E., Barras, C., Langlet, D., Nardelli, M. P., Kim, J.-H., Bonnin, J., Metzger, E., and Jorissen, F. J.: Survival, Reproduction and Calcification of Three Benthic Foraminiferal Species in Response to Experimentally Induced Hypoxia, in: *Approaches to Study Living Foraminifera*, edited by: Kitazato, H. and Bernhard, J. M., Springer Japan, 163–193, 2014.
- Goldstein, S. T., Watkins, G. T., and Kuhn, R. M.: Microhabitats of salt marsh foraminifera: St. Catherines Island, Georgia, USA, *Mar. Micropaleontol.*, 26, 17–29, 1995.
- Gross, O.: Influence of temperature, oxygen and food availability on the migrational activity of bathyal benthic foraminifera: evidence by microcosm experiments, in: *Life at Interfaces and Under Extreme Conditions*, edited by: Liebezeit, G., Dittmann, S., and Kröncke, I., Springer, the Netherlands, 123–137, 2000.
- Heinz, P. and Geslin, E.: Ecological and Biological Response of Benthic Foraminifera Under Oxygen-Depleted Conditions: Evidence from Laboratory Approaches, in: *Anoxia*, edited by: Altenbach, A. V., Bernhard, J. M., and Seckbach, J., Springer, the Netherlands, 287–303, 2012.
- Hess, S., Alve, E., Trannum, H. C., and Norling, K.: Benthic foraminiferal responses to water-based drill cuttings and natural sediment burial: Results from a mesocosm experiment, *Mar. Micropaleontol.*, 101, 1–9, 2013.
- Hofmann, A. F., Soetaert, K., Middelburg, J. J., and Meysman, F. J. R.: AquaEnv?: An Aquatic Acid–Base Modelling Environment in R, *Aquat. Geochem.*, 16, 507–546, 2010.
- Hohenegger, J., Piller, W., and Baal, C.: Reasons for spatial microdistributions of foraminifers in an intertidal pool (northern Adriatic Sea), *Mar. Ecol.*, 10, 43–78, 1989.
- Hohenegger, J., Piller, W. E., and Baal, C.: Horizontal and vertical spatial microdistribution of foraminifers in the shallow subtidal Gulf of Trieste, northern Adriatic Sea, *J. Foraminifer. Res.*, 23, 79–101, 1993.
- Hyacinthe, C. and Van Cappellen, P.: An authigenic iron phosphate phase in estuarine sediments: composition, formation and chemical reactivity, *Mar. Chem.*, 91, 227–251, 2004.
- Hyacinthe, C., Anschutz, P., Carbonel, P., Jouanneau, J.-M., and Jorissen, F. J.: Early diagenetic processes in the muddy sediments of the Bay of Biscay, *Mar. Geol.*, 177, 111–128, 2001.
- Hyacinthe, C., Bonneville, S., and Van Cappellen, P.: Reactive iron(III) in sediments: Chemical versus microbial extractions, *Geochim. Cosmochim. Acta*, 70, 4166–4180, 2006.
- Jézéquel, D., Brayner, R., Metzger, E., Viollier, E., Prévot, F., and Fiévet, F.: Two-dimensional determination of dissolved iron and sulphur species in marine sediment pore-waters by thin-film based imaging, Thau lagoon (France), *Estuar. Coast. Shelf Sci.*, 72, 420–431, 2007.
- Jorissen, F. J.: Benthic foraminifera from the Adriatic Sea: principles of phenotypic variation, *Utrecht Micropaleontol. Bull.*, 37, 1–174, 1988.
- Jorissen, F. J.: Benthic foraminiferal microhabitats below the sediment-water interface, in *Modern Foraminifera*, Springer Netherlands, 161–179, 2003.
- Jorissen, F. J., Barmawidjaja, D. M., Puskaric, S., and van der Zwaan, G. J.: Vertical distribution of benthic foraminifera in the northern Adriatic Sea: The relation with the organic flux, *Mar. Micropaleontol.*, 19, 131–146, 1992.
- Jorissen, F. J., de Stigter, H. C. and Widmark, J. G. V.: A conceptual model explaining benthic foraminiferal microhabitats, *Mar. Micropaleontol.*, 26, 3–15, 1995.
- Jorissen, F. J., Wittling, I., Peypouquet, J. P., Rabouille, C., and Relexans, J. C.: Live benthic foraminiferal faunas off Cape Blanc, NW-Africa: Community structure and microhabitats, *Deep Sea Res. Pt. A*, 45, 2157–2188, 1998.
- Koller, H., Dworschak, P. C., and Abed-Navandi, D.: Burrows of *Pestarella tyrrhena* (Decapoda: Thalassinidea): hot spots for Nematoda, Foraminifera and bacterial densities, *J. Mar. Biol. Assoc. UK*, 86, 1113–1122, 2006.
- Kostka, J. E. and Luther III, G. W.: Seasonal cycling of Fe in salt-marsh sediments, *Biogeochemistry*, 29, 159–181, 1995.
- Kristensen, E., PenhaLopes, G., Delefosse, M., Valdemarsen, T., Quintana, C. O., and Banta, G. T.: REVIEW What is bioturbation? The need for a precise definition for fauna in aquatic sciences, *Mar. Ecol. Prog. Ser.*, 446, 285–302, 2012.
- Krom, M. D., Davison, P., Zhang, H., and Davison, W.: High-resolution pore-water sampling with a gel sampler, *Limnol. Oceanogr.*, 39, 1967–1972, 1994.

- Langezaal, A. M., Ernst, S. R., Haese, R. R., van Bergen, P. F., and van der Zwaan, G. J.: Disturbance of intertidal sediments: the response of bacteria and foraminifera, *Estuar. Coast. Shelf Sci.*, 58, 249–264, 2003.
- Langezaal, A. M., Jorissen, F. J., Braun, B., Chaillou, G., Fontanier, C., Anschutz, P., and van der Zwaan, G. J.: The influence of seasonal processes on geochemical profiles and foraminiferal assemblages on the outer shelf of the Bay of Biscay, *Cont. Shelf Res.*, 26, 1730–1755, 2006.
- Langlet, D., Geslin, E., Baal, C., Metzger, E., Lejzerowicz, F., Riedel, B., Zuschin, M., Pawlowski, J., Stachowitsch, M., and Jorissen, F. J.: Foraminiferal survival after long-term in situ experimentally induced anoxia, *Biogeosciences*, 10, 7463–7480, doi:10.5194/bg-10-7463-2013, 2013.
- Le Floch, J.-F.: Propagation de la marée dynamique dans l'estuaire de la Seine et en Seine maritime, Thèse d'Etat, Paris, 1961.
- Legendre, P. and Fortin, M.-J.: Spatial pattern and ecological analysis, *Vegetation*, 80, 107–138, 1989.
- Legendre, P. and Fortin, M.-J.: Comparison of the Mantel test and alternative approaches for detecting complex multivariate relationships in the spatial analysis of genetic data, *Mol. Ecol. Resour.*, 10, 831–844, 2010.
- Leutenegger, S. and Hansen, H. J.: Ultrastructural and radiotracer studies of pore function in foraminifera, *Mar. Biol.*, 54, 11–16, 1979.
- Loubere, P., Jacobsen, B., Klitgaard Kristensen, D., Husum, K., Jernas, P., and Richaud, M.: The structure of benthic environments and the paleochemical record of foraminifera, *Deep Sea Res. Part Oceanogr. Res. Pap.*, 58, 535–545, 2011.
- Lovley, D. R.: Dissimilatory Fe(III) and Mn(IV) reduction., *Microbiol. Rev.*, 55, 259–287, 1991.
- Lynts, G. W.: Relationship of Sediment-size Distribution to Ecologic Factors in Buttonwood Sound, Florida Bay, *J. Sediment. Res.*, 36, 66–74, 1966.
- Martiny, J. B. H., Bohannon, B. J. M., Brown, J. H., Colwell, R. K., Fuhrman, J. A., Green, J. L., Horner-Devine, M. C., Kane, M., Krumins, J. A., Kuske, C. R., Morin, P. J., Naeem, S., Øvreås, L., Reysenbach, A.-L., Smith, V. H., and Staley, J. T.: Microbial biogeography: putting microorganisms on the map, *Nat. Rev. Microbiol.*, 4, 102–112, 2006.
- Meyers, M. B., Fossing, H., and Powell, E. N.: Microdistribution of interstitial meiofauna, oxygen and sulphide gradients, and the tubes of macro-infauna, *Mar. Ecol.-Prog. Ser.*, 35, 223–241, 1987.
- Meysman, F. J. R., Boudreau, B. P., and Middelburg, J. J.: Relations between local, nonlocal, discrete and continuous models of bioturbation, *J. Mar. Res.*, 61, 391–410, 2003.
- Meysman, F. J. R., Boudreau, B. P., and Middelburg, J. J.: When and why does bioturbation lead to diffusive mixing?, *J. Mar. Res.*, 68, 881–920, 2010a.
- Meysman, F. J. R., Middelburg, J. J., and Heip, C. H. R.: Bioturbation: a fresh look at Darwin's last idea, *Trends Ecol. Evol.*, 21, 688–695, 2006.
- Meysman, F. J. R., Malyuga, V. S., Boudreau, B. P., and Middelburg, J. J.: A generalized stochastic approach to particle dispersal in soils and sediments, *Geochim. Cosmochim. Acta*, 72, 3460–3478, 2008.
- Meysman, F. J. R., Galaktionov, O. S., Glud, R. N., and Middelburg, J. J.: Oxygen penetration around burrows and roots in aquatic sediments, *J. Mar. Res.*, 68, 309–336, 2010b.
- Millero, F. J.: The thermodynamics of the carbonate system in seawater, *Geochim. Cosmochim. Acta*, 43, 1651–1661, 1979.
- Millero, F. J.: Thermodynamics of the carbon dioxide system in the oceans, *Geochim. Cosmochim. Acta*, 59, 661–677, 1995.
- Moodley, L.: Southern North Sea seafloor and subsurface distribution of living benthic foraminifera, *Neth. J. Sea Res.*, 27, 57–71, 1990.
- Moodley, L. and Hess, C.: Tolerance of Infaunal Benthic Foraminifera for Low and High Oxygen Concentrations, *Biol. Bull.*, 183, 94–98, 1992.
- Moodley, L., van der Zwaan, G. J., Rutten, G. M. W., Boom, R. C. E., and Kempers, A. J.: Subsurface activity of benthic foraminifera in relation to porewater oxygen content: laboratory experiments, *Mar. Micropaleontol.*, 34, 91–106, 1998.
- Morse, J. W., DiMarco, S. F., Hebert, A. B., and Sell, K. S.: A scaling approach to spatial variability in early diagenetic processes, in *The Interactions between Sediments and Water*, Springer, 25–29, 2003.
- Morvan, J., Debenay, J.-P., Jorissen, F., Redois, F., Bénéteau, E., Delplancke, M., and Amato, A.-S.: Patchiness and life cycle of intertidal foraminifera: Implication for environmental and paleoenvironmental interpretation, *Mar. Micropaleontol.*, 61, 131–154, 2006.
- Mucci, A.: The solubility of calcite and aragonite in seawater at various salinities, temperatures, and one atmosphere total pressure, *Am. J. Sci.*, 283, 780–799, 1983.
- Mucci, A., Sundby, B., Gehlen, M., Arakaki, T., Zhong, S., and Silverberg, N.: The fate of carbon in continental shelf sediments of eastern Canada: a case study, *Deep-Sea Res. Pt. II*, 47, 733–760, 2000.
- Nardelli, M. P., Barras, C., Metzger, E., Mouret, A., Filipsson, H. L., Jorissen, F., and Geslin, E.: Experimental evidence for foraminiferal calcification under anoxia, *Biogeosciences*, 11, 4029–4038, doi:10.5194/bg-11-4029-2014, 2014.
- Nomaki, H., Chikaraishi, Y., Tsuchiya, M., Toyofuku, T., Ohkouchi, N., Uematsu, K., Tame, A., and Kitazato, H.: Nitrate uptake by foraminifera and use in conjunction with endobionts under anoxic conditions, *Limnol. Oceanogr.*, 59, 1879–1888, 2014.
- Paterson, D. M.: Short-term changes in the erodibility of intertidal cohesive sediments related to the migratory behavior of epipellic diatoms, *Limnol. Oceanogr.*, 34, 223–234, 1989.
- Phipps, M. D.: Benthic foraminifera of the Portuguese margin: Impact of organic supplies on the density, biodiversity and composition of the faunas, Université d'Angers, 2012.
- Pina-Ochoa, E., Hogslund, S., Geslin, E., Cedhagen, T., Revsbech, N. P., Nielsen, L. P., Schweizer, M., Jorissen, F., Rysgaard, S., and Risgaard-Petersen, N.: Widespread occurrence of nitrate storage and denitrification among Foraminifera and Gromiida, *Proc. Natl. Acad. Sci.*, 107, 1148–1153, 2010.
- Pischedda, L., Cuny, P., Esteves, J. L., Poggiale, J.-C., and Gilbert, F.: Spatial oxygen heterogeneity in a *Hediste diversicolor* irrigated burrow, *Hydrobiologia*, 680, 109–124, 2012.
- Pucci, F., Geslin, E., Barras, C., Morigi, C., Sabbatini, A., Negri, A., and Jorissen, F. J.: Survival of benthic foraminifera under hypoxic conditions: Results of an experimental study using

- the CellTracker Green method, *Mar. Pollut. Bull.*, 59, 336–351, 2009.
- Revsbech, N. P., Sørensen, J., Blackburn, T. H., and Lomholt, J. P.: Distribution of oxygen in marine sediments measured with microelectrodes, *Limnol. Oceanogr.*, 25, 403–411, 1980.
- Richter, G.: Beobachtungen zur Ökologie einiger Foraminiferen des Jade Gebietes, *Nat. Volk*, 91, 163–170, 1961.
- Risgaard-Petersen, N., Langezaal, A. M., Ingvardsen, S., Schmid, M. C., Jetten, M. S. M., Op den Camp, H. J. M., Derksen, J. W. M., Piña-Ochoa, E., Eriksson, S. P., Peter Nielsen, L., Peter Revsbech, N., Cedhagen, T., and van der Zwaan, G. J.: Evidence for complete denitrification in a benthic foraminifer, *Nature*, 443, 93–96, 2006.
- Robertson, D., Teasdale, P. R., and Welsh, D. T.: A novel gel-based technique for the high resolution, two-dimensional determination of iron (II) and sulphide in sediment, *Limnol. Ocean. Meth.*, 6, 502–512, 2008.
- Robertson, D., Welsh, D. T., and Teasdale, P. R.: Investigating biogenic heterogeneity in coastal sediments with two-dimensional measurements of iron(II) and sulphide, *Environ. Chem.*, 6, 60–69, 2009.
- Round, F.: The ecology of benthic algae, in *Algae and man*, Springer, 138–184, 1964.
- Saffert, H. and Thomas, E.: Living foraminifera and total populations in salt marsh peat cores: Kelsey Marsh (Clinton, CT) and the Great Marshes (Barnstable, MA), *Mar. Micropaleontol.*, 33, 175–202, 1998.
- Santner, J., Larsen, M., Kreuzeder, A., and Glud, R. N.: Two decades of chemical imaging of solutes in sediments and soils – a review, *Anal. Chim. Acta*, 9, 9–42, doi:10.1016/j.aca.2015.02.006, 2015.
- Stockdale, A., Davison, W., and Zhang, H.: Micro-scale biogeochemical heterogeneity in sediments: A review of available technology and observed evidence, *Earth-Sci. Rev.*, 92, 81–97, 2009.
- Stockdale, A., Davison, W., and Zhang, H.: Formation of iron sulphide at faecal pellets and other microniches within suboxic surface sediment, *Geochim. Cosmochim. Acta*, 74, 2665–2676, 2010.
- Thibault de Chanvalon, A., Metzger, E., Mouret, A., Geslin, E., Knoery, J., and Meysman, F. J. R.: Iron release from intertidal mudflat: 2-D modelling at submillimetre scale, *Mar. Chem.*, in preparation, 2015.
- Thomsen, L. and Altenbach, A. V.: Vertical and areal distribution of foraminiferal abundance and biomass in microhabitats around inhabited tubes of marine echinurids, *Mar. Micropaleontol.*, 20, 303–309, 1993.
- Travis, J. L. and Rabalais, N. N.: The motility of Foraminifera, in *Biology of the Foraminifera*, in: *Biology of the Foraminifera*, edited by: Lee, J. J. and Anderson, O. R., London., 91–155, 1991.
- Vader, W. J. M.: A preliminary investigation into the reactions of the infauna of the tidal flats to tidal fluctuations in water level, *Neth. J. Sea Res.*, 2, 189–222, 1964.
- Van der Zwaan, G. J. V. D. and Jorissen, F. J.: Biofacial patterns in river-induced shelf anoxia, *Geol. Soc. Lond. Spec. Publ.*, 58, 65–82, 1991.
- Van der Zwaan, G. J., Duijnste, I. A. P., den Dulk, M., Ernst, S. R., Jannink, N. T., and Kouwenhoven, T. J.: Benthic foraminifera: proxies or problems?: A review of paleoecological concepts, *Earth-Sci. Rev.*, 46, 213–236, 1999.
- Wang, F., Tessier, A., and Hare, L.: Oxygen measurements in the burrows of freshwater insects, *Freshw. Biol.*, 46, 317–327, 2001.
- Wenzhofer, F. and Glud, R. N.: Small-scale spatial and temporal variability in coastal benthic O₂ dynamics: Effects of fauna activity, *Limnol. Oceanogr.*, 49, 1471–1481, 2004.
- Wheatcroft, R. A., Jumars, P. A., Smith, C. R., and Nowell, A. R. M.: A mechanistic view of the particulate biodiffusion coefficient: step lengths, rest periods and transport directions, *J. Mar. Res.*, 48, 177–207, 1990.
- Wu, J. and Li, H.: Concepts of scale and scaling, in *Scaling and uncertainty analysis in ecology*, Springer, 3–15, 2006.
- Wu, J., Jelinski, D. E., Luck, M., and Tueller, P. T.: Multiscale Analysis of Landscape Heterogeneity: Scale Variance and Pattern Metrics, *Geogr. Inf. Sci.*, 6, 6–19, 2000.
- Zhu, Q. and Aller, R. C.: A rapid response, planar fluorosensor for measuring two-dimensional pCO₂ distributions and dynamics in marine sediments, *Limnol. Oceanogr. Methods*, 8, 326–336, 2010.
- Zhu, Q. and Aller, R. C.: Two-dimensional dissolved ferrous iron distributions in marine sediments as revealed by a novel planar optical sensor, *Mar. Chem.*, 136/137, 14–23, 2012.
- Zhu, Q., Aller, R. C., and Fan, Y.: Two-dimensional pH distributions and dynamics in bioturbated marine sediments, *Geochim. Cosmochim. Acta*, 70, 4933–4949, 2006.
- Zorn, M. E., Lalonde, S. V., Gingras, M. K., Pemberton, S. G., and Konhauser, K. O.: Microscale oxygen distribution in various invertebrate burrow walls, *Geobiology*, 4, 137–145, 2006.

Remarks from the typesetter

TS1 Unfortunately it is not possible to change the layout because it is automatically set by the Latex system.

