



HAL
open science

Close to the bone object Microscopy and imaging Department - MAE

Alexandra Legrand-Pineau, Isabelle Sidéra, Christophe Petit

► **To cite this version:**

Alexandra Legrand-Pineau, Isabelle Sidéra, Christophe Petit. Close to the bone object Microscopy and imaging Department - MAE. *Frontiers in Heritage Science*, Feb 2019, Paris, France. hal-02436771

HAL Id: hal-02436771

<https://hal.science/hal-02436771v1>

Submitted on 13 Jan 2020

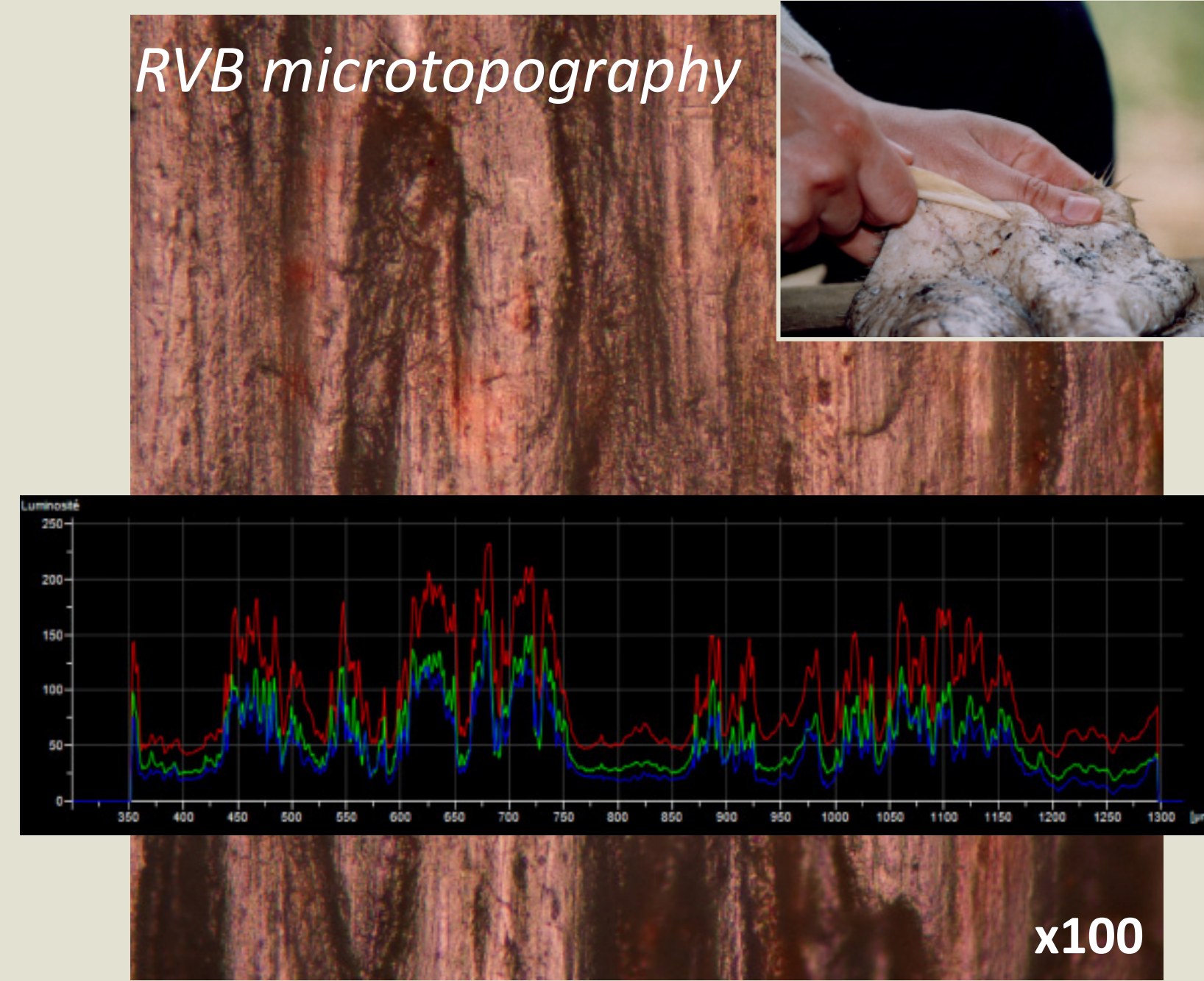
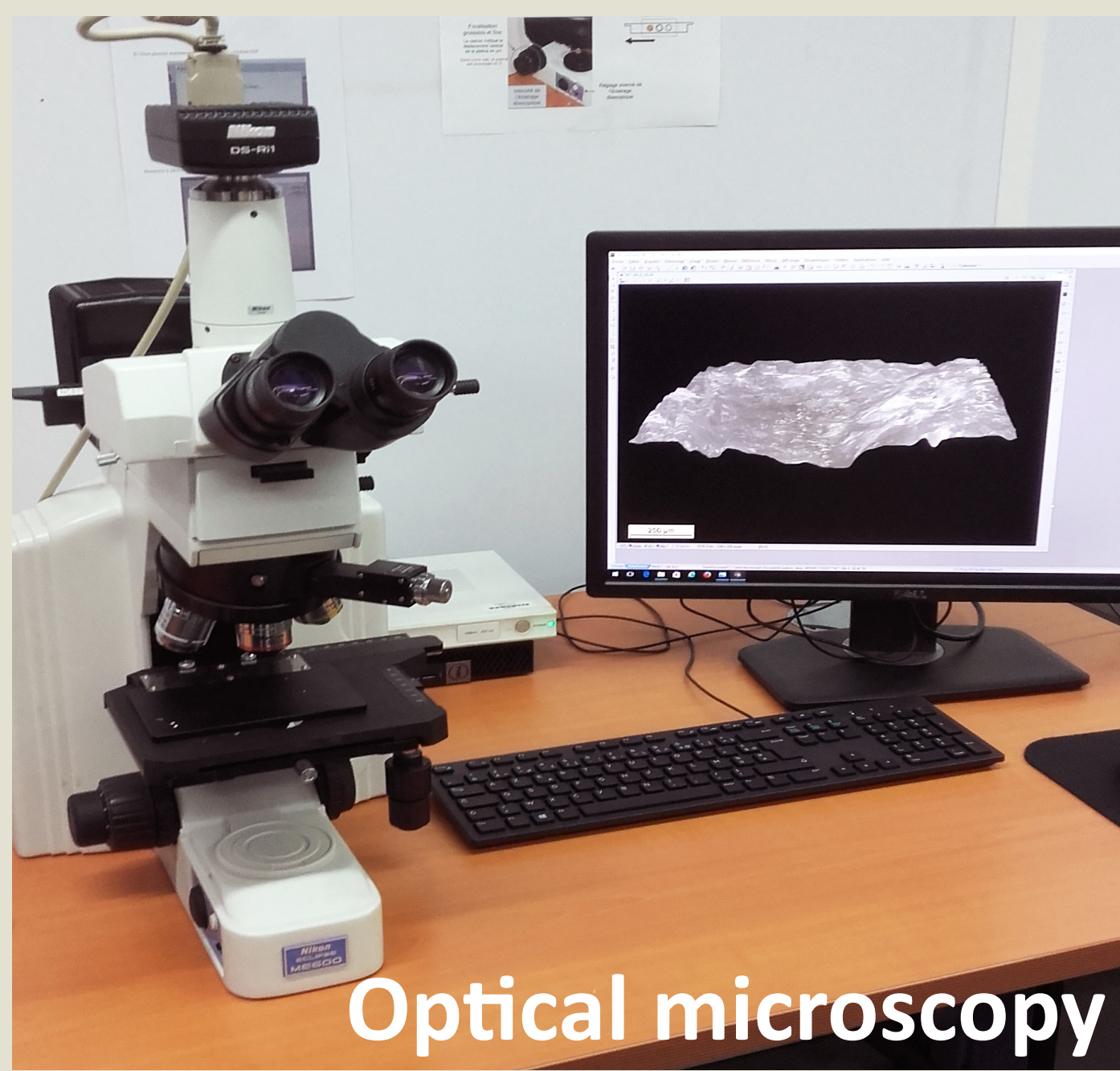
HAL is a multi-disciplinary open access archive for the deposit and dissemination of scientific research documents, whether they are published or not. The documents may come from teaching and research institutions in France or abroad, or from public or private research centers.

L'archive ouverte pluridisciplinaire **HAL**, est destinée au dépôt et à la diffusion de documents scientifiques de niveau recherche, publiés ou non, émanant des établissements d'enseignement et de recherche français ou étrangers, des laboratoires publics ou privés.

Close to the bone object

Microscopy and imaging Department - MAE

Imaging & quantitative methods for use-wear

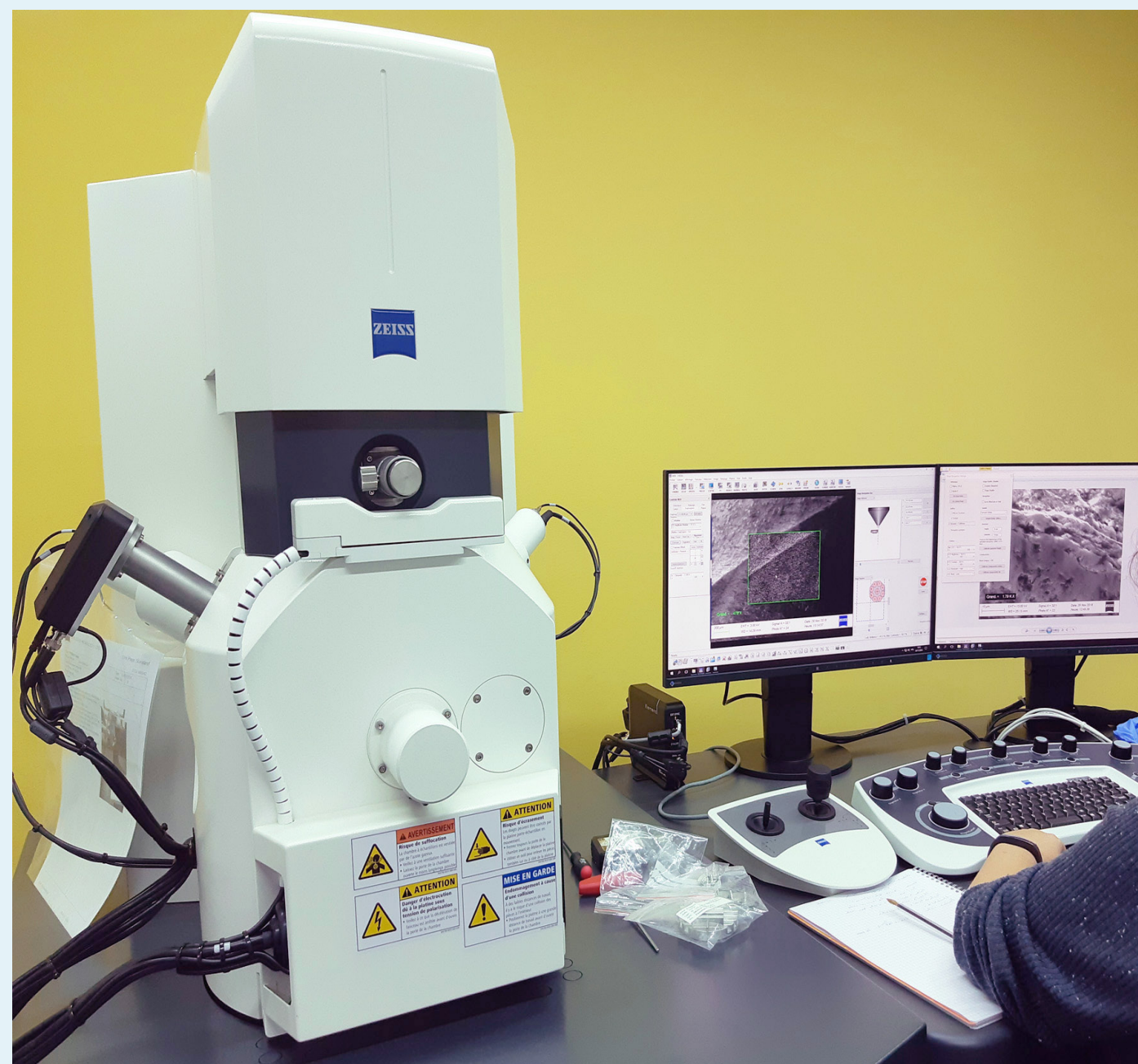


Bone tools volume and surface alterations characterized by optical and SEM microscopy, automation, measurement and imaging

Panoramic view: 4 pictures

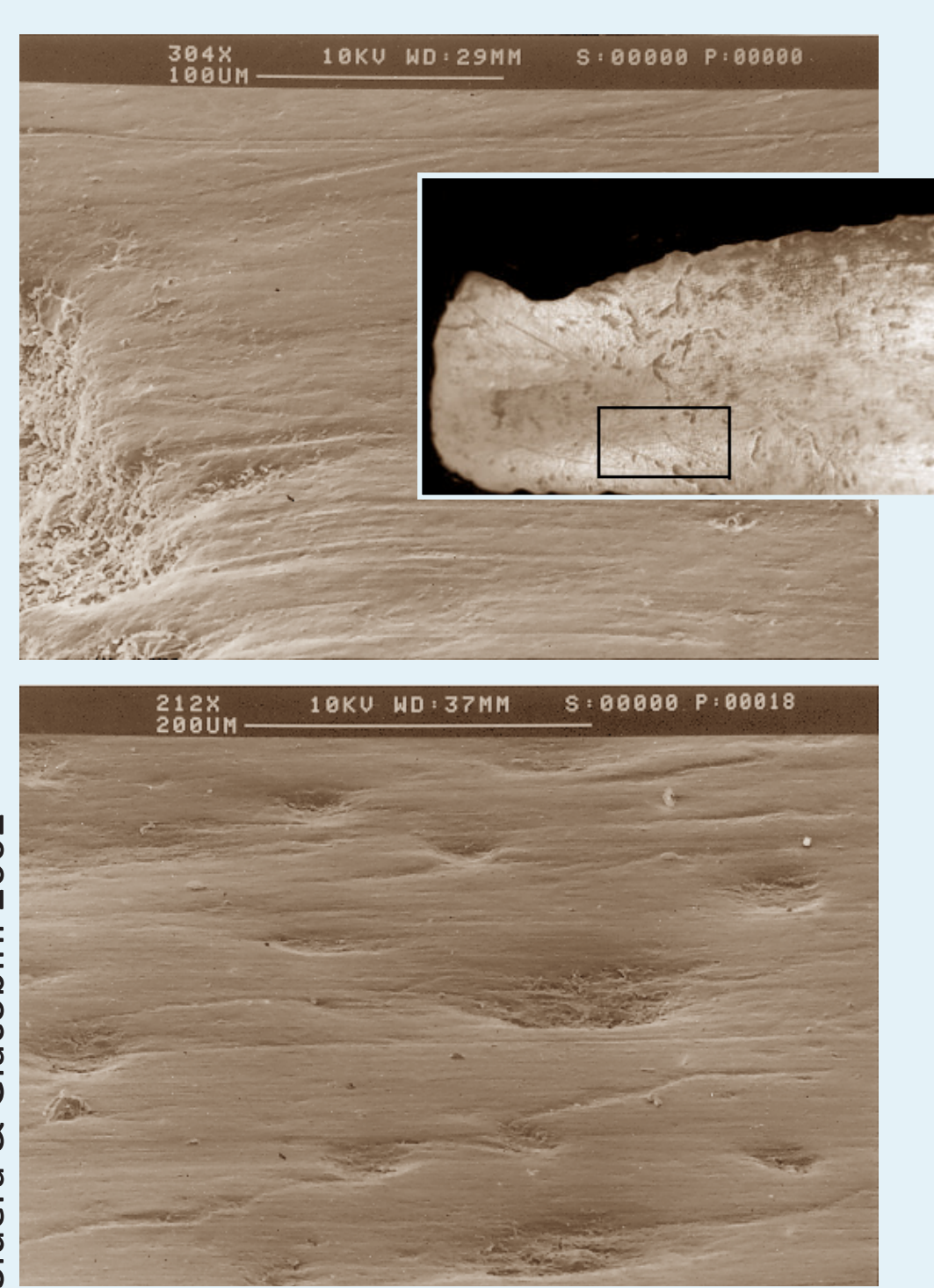


Scanning Electron Microscopy

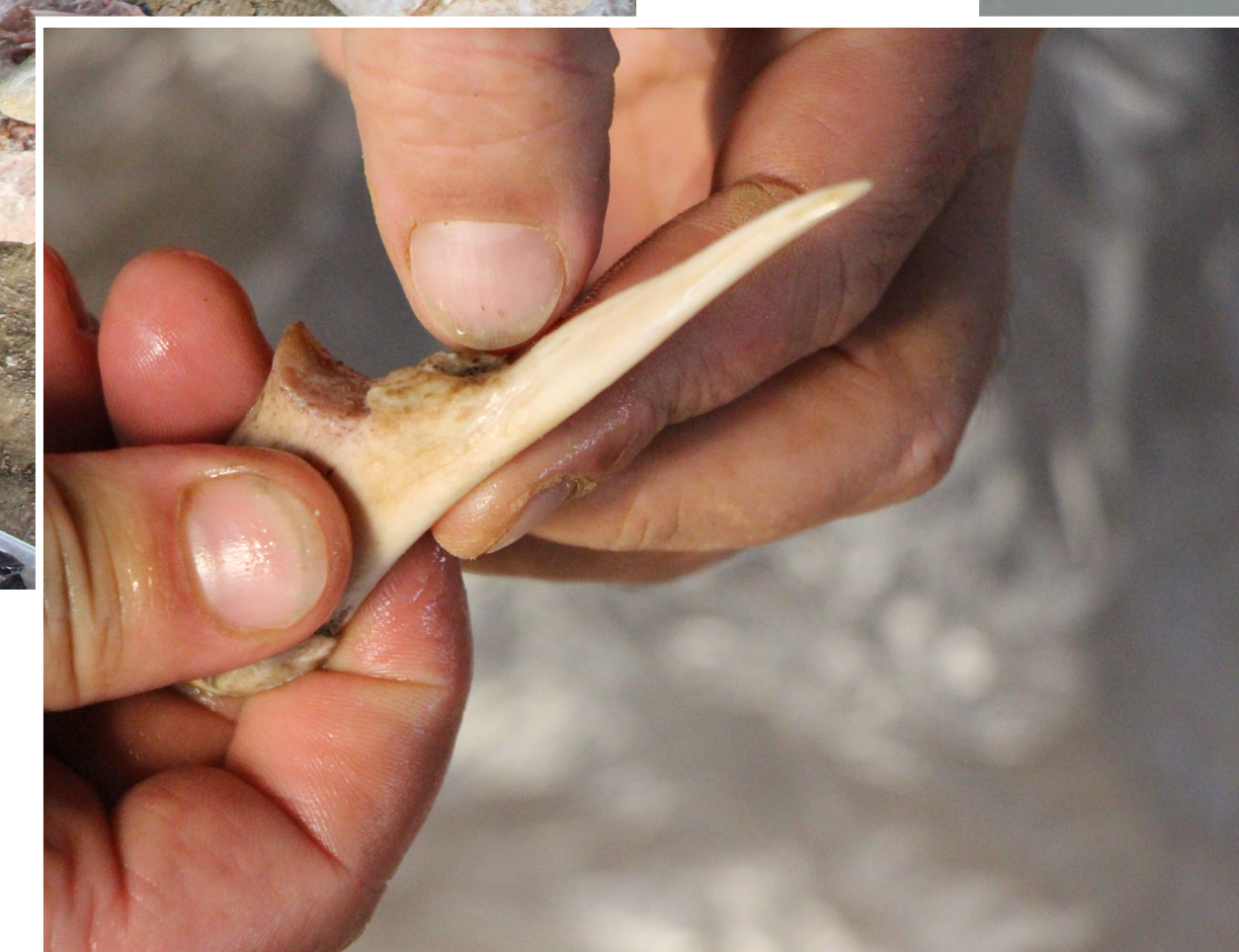
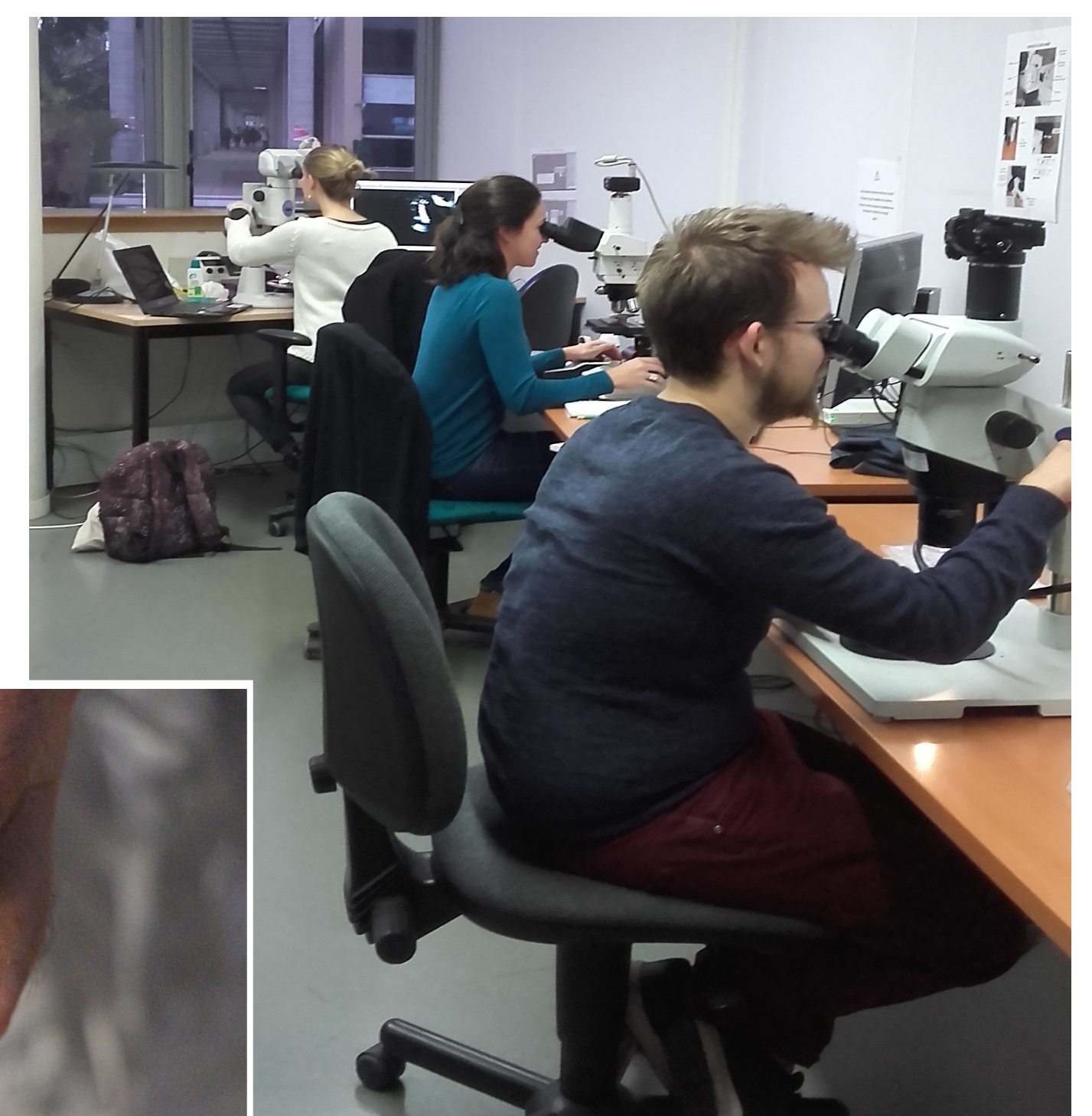


matériaux anciens et patrimoniaux

file de France



Training: teaching, seminars, experimentation, imaging



Database for bone technology and function

Alexandra Legrand-Pineau (CNRS)

alexandra.pineau@cnrs.fr

Isabelle Sidéra (CNRS)

isabelle.sidera@cnrs.fr

Christophe Petit (Univ. Paris 1)

christophe.petit@univ-paris1.fr

Maison Archéologie & Ethnologie
René Ginouvès - MAE
21, allée de l'Université
92023 Nanterre - France



Experimental tool

